

# Brain-derived neurotrophic factor derived from sensory neurons plays a critical role in chronic pain

Shafaq Sikandar, Michael S. Minett, Queensta Millet, Sonia Santana-Varela, Joanne Lau, John N. Wood and Jing Zhao

Many studies support the pro-nociceptive role of brain-derived neurotrophin factor (BDNF) in pain processes in the peripheral and central nervous system. We have previously shown that nociceptor-derived BDNF is involved in inflammatory pain. Microglial-derived BDNF has also been shown to be involved in neuropathic pain. However, the distinct contribution of primary afferent-derived BDNF to chronic pain processing remains undetermined. In this study, we used Avil-CreERT2 mice to delete *Bdnf* from all adult peripheral sensory neurons. Conditional BDNF knockouts were healthy with no sensory neuron loss. Behavioural assays and *in vivo* electrophysiology indicated that spinal excitability was normal. Following formalin inflammation or neuropathy with a modified Chung model, we observed normal development of acute pain behaviour, but a deficit in second phase formalin-induced nocifensive responses and a reversal of neuropathy-induced mechanical hypersensitivity during the later chronic pain phase in conditional BDNF knockout mice. In contrast, we observed normal development of acute and chronic neuropathic pain in the Seltzer model, indicating differences in the contribution of BDNF to distinct models of neuropathy. We further used a model of hyperalgesic priming to examine the contribution of primary afferent-derived BDNF in the transition from acute to chronic pain, and found that primed BDNF knockout mice do not develop prolonged mechanical hypersensitivity to an inflammatory insult. Our data suggest that BDNF derived from sensory neurons plays a critical role in mediating the transition from acute to chronic pain.

Molecular Nociception Group, Wolfson Institute for Biomedical Research, Division of Medicine, University College London, Gower Street London WC1E 6BT, UK

Correspondence to: Jing Zhao,  
Molecular Nociception Group, Wolfson Institute of Biomedical Research, Cruciform Building, Division of Medicine, University College London, Gower Street, London WC1E 6BT, UK  
E-mail: jing02.zhao@ucl.ac.uk

Correspondence may also be addressed to: John N. Wood  
E-mail: j.wood@ucl.ac.uk

**Keywords:** BDNF; peripheral sensory neurons; DRG; neuropathic pain; hyperalgesic priming

**Abbreviations:** DRG = dorsal root ganglia; PGE2 = prostaglandin E2; WDR = wide-dynamic range

## Introduction

Brain-derived neurotrophic factor (BDNF), a member of the neurotrophin family, acts as a modulator of neuronal excitability and synaptic plasticity (Pezet and McMahon, 2006).

We have previously shown that nociceptor-derived BDNF regulates the excitability of spinal neurons and plays a crucial role in inflammatory pain (Zhao *et al.*, 2006), supporting other studies that have demonstrated neurotrophin regulation of synaptic transmission and long term plasticity in pain

Received June 8, 2017. Revised November 29, 2017. Accepted December 2, 2017. Advance Access publication January 30, 2018

© The Author(s) (2018). Published by Oxford University Press on behalf of the Guarantors of Brain.

This is an Open Access article distributed under the terms of the Creative Commons Attribution License (<http://creativecommons.org/licenses/by/4.0/>), which permits unrestricted reuse, distribution, and reproduction in any medium, provided the original work is properly cited.

pathways (Kerr *et al.*, 1999; Slack *et al.*, 2004; Melemedjian *et al.*, 2013). Although multiple studies support the role of BDNF expressed throughout the nervous system in nociceptive processing in the peripheral and CNS (Merighi *et al.*, 2008; Ferrini and De Koninck, 2013; Nijs *et al.*, 2015), the distinct contribution of primary afferent-derived BDNF to chronic pain processing remains undetermined. Here we demonstrate the critical role of BDNF expressed in peripheral sensory neurons in the transition from acute to chronic pain.

BDNF expressed in dorsal root ganglia (DRG) is released in an activity-dependent fashion in the spinal dorsal horn to activate TrkB receptors on second order neurons or primary afferent endings (Thompson *et al.*, 1999; Lever *et al.*, 2001; Chen *et al.*, 2014b). It has long been known that exogenous BDNF can facilitate spinal reflexes and increase primary afferent evoked postsynaptic currents (Kerr *et al.*, 1999; Garraway *et al.*, 2003). BDNF derived from Na<sub>v</sub>1.8-expressing nociceptive neurons contributes to inflammatory pain induced by intraplantar carrageenan and intramuscular NGF, but does not affect the development of neuropathic pain in a modified Chung model (Zhao *et al.*, 2006). In contrast, BDNF derived from microglia drives pain behaviour in a model of sciatic nerve cuffing (Coull *et al.*, 2005), and BDNF derived from myelinated afferents is dramatically increased following spinal nerve transection (Obata and Noguchi, 2006; Obata *et al.*, 2006). However, a pro-nociceptive role of BDNF derived from sensory neurons alone is yet to be determined. Some studies using models of hyperalgesic priming have demonstrated a role for BDNF in mediating persistent pain in migraine and following acute inflammation (Melemedjian *et al.*, 2013; Burgos-Vega *et al.*, 2016), which suggests that BDNF expression overall can drive chronic pain. However, whether BDNF released from sensory neurons alone can mediate the transition of acute to chronic pain is still unknown.

Developmental effects or compensatory mechanisms with embryonic gene deletion can mask the normal role of genes and expression of phenotypes in an adult system. This may be relevant to genes, such as *Bdnf*, which are expressed in different cellular populations and have temporal changes in expression throughout development (Cohen-Cory *et al.*, 2010; Kasemeier-Kulesa *et al.*, 2015). We therefore used an inducible CreERT2 system to avoid developmental problems (Feil *et al.*, 2009) and delete *Bdnf* from all sensory neurons in adult animals by crossing an Avil-CreERT2 (Advillin-CreERT2) strain (Lau *et al.*, 2011) with floxed *Bdnf* mice. We determined the contribution of sensory neuron-derived BDNF to acute pain processing and pain chronification using inflammatory, neuropathic and hyperalgesic priming models of chronic pain.

## Materials and methods

### Transgenic mice

Homozygous floxed *Bdnf* mice (*Bdnf*<sup>fl/fl</sup>) carrying *loxP* sites flanking exon 5 in the *Bdnf* gene (Rios *et al.*, 2001) were

interbred with Avil-CreERT2 mice (Lau *et al.*, 2011) expressing a tamoxifen-inducible modified Cre recombinase under the control of the peripherally-restricted sensory neuron-specific advillin promoter to obtain *Bdnf*<sup>fl/fl</sup>; Avil-CreERT2 mice. Genotyping of mice for *Bdnf*<sup>fl/fl</sup> and Avil-CreERT2 was performed by standard PCR and the following primers were used (5'-3'): *Bdnf1* (forward) GCCTTCATGCAACCGAAGTATG and *Bdnf2* (reverse) TGTGATTGTGTTTCTGGTGAC; *Advillin1* (forward) CCCTGTTCACTGTGAGTAGG and *Advillin2* (reverse) AGTATCTGGTAGGTGCTTCCAG; and Avil-CreERT2 (reverse) GCGATCCCTGAACATGTCCATC. The expected sizes of amplicons are: floxed *Bdnf* – 487 bp; *Bdnf* wild-type (WT) – 437 bp; Avil-CreERT2 – 180 bp; *Advillin* wild-type – 480 bp. To delete the *Bdnf* gene, *Bdnf*<sup>fl/fl</sup>; Avil-CreERT2 mice were treated with tamoxifen at the age of 8–12 weeks as described (Lau *et al.*, 2011). At the same time, the littermate *Bdnf*<sup>fl/fl</sup> control mice received the same treatment in parallel. Ten days after the tamoxifen treatment (5-day intraperitoneal injection, 2 mg per day), *Bdnf*<sup>fl/fl</sup>; Avil-CreERT2 knockout mice and *Bdnf*<sup>fl/fl</sup> control mice were used for experiments.

All animal assays performed in this study were approved by the UK Home Office Animals (Scientific Procedures) Act 1986. Both female and male mice aged 8–14 weeks were kept on a 12-h light/dark cycle and maintained under standard conditions (21 ± 1°C, food and water *ad libitum*).

### Immunohistochemistry and cell counting

Three mice from each group (*Bdnf*<sup>fl/fl</sup>; Avil-CreERT2 and *Bdnf*<sup>fl/fl</sup>) were used for DRG cell counting. After CO<sub>2</sub> euthanasia, L4 DRGs were excised and rapidly frozen with O.C.T. compound on dry ice and cut in serial sections (11-µm thick). Every eighth section was collected onto Superfrost™ slides and dried at room temperature for 4 h. Immunohistochemistry and cell counting were performed as previously described (Zhao *et al.*, 2006). Briefly, after three washes in phosphate-buffered saline (137 mM NaCl, 10 mM Na<sub>2</sub>HPO<sub>4</sub>, 1.8 mM KH<sub>2</sub>PO<sub>4</sub>, 2.7 mM KCl, pH 7.4) containing 0.3% Triton™ X-100 (PBST), sections were incubated with 10% goat serum in PBST at room temperature for 1 h and then incubated with primary antibodies, mouse anti-peripherin (1:1000; Sigma, catalogue #P5117) and rabbit anti-N200 (1:200; Sigma, catalogue #N4142), overnight at 4°C. After three washes in PBST, sections were incubated with secondary antibodies, goat anti-rabbit Alexa Fluor® 488 antibody (1:1000, Invitrogen, catalogue #A-11017) and anti-mouse IgG Alexa Fluor® 594 (1:1000; Invitrogen, catalogue #A-11037) for 2 h in dark. After three washes in PBST, the sections were mounted with VECTASHIELD® HardSet Antifade Mounting Medium (Vector, catalogue #H-1400) and visualized using a Leica DMRB microscope, a Hamamatsu ORCA-R2 digital camera and HClange 2.0.1.16 software. The sample images were analysed using the cell counter plugin for ImageJ. The number of neurons was counted in every eighth section throughout the DRG. Thus, the DRG was sampled every 88 µm to avoid double counting of the large diameter cells. Every visible cell was counted whether the nucleolus was present or not. All counting was repeated by a blinded experimenter, and the results were pooled. The percentages of NF200-positive,

peripherin-positive and double-stained cells were calculated for each section. Mean and standard error of mean (SEM) of these percentages were evaluated for wild-type and mutant groups and significance was determined using a two-tailed unpaired heteroscedastic *t*-test.

## In vivo electrophysiology

Electrophysiological recordings were performed by an experimenter blind to genotype (*Bdnf*<sup>fl/fl</sup>; Avil-CreERT2, *n* = 86 neurons from two male and three female mice) and their littermate controls (*Bdnf*<sup>fl/fl</sup>, *n* = 105 neurons from five male and two female mice). Mice were anaesthetized with isoflurane (4%; 0.5 l/min N<sub>2</sub>O and 1.5 l/min O<sub>2</sub>) and secured in a stereotaxic frame. Anaesthesia was reduced and maintained at 1.5% isoflurane for the remaining duration of the experiment. A laminectomy was performed to expose L3–L5 segments of the spinal cord and extracellular recordings were made from wide-dynamic range (WDR) neurons in the deep dorsal horn (lamina III–V, 200–600 μm) using parylene-coated tungsten electrodes (A-M Systems) in *Bdnf*<sup>fl/fl</sup> controls and *Bdnf*<sup>fl/fl</sup>; Avil-CreERT2 knockout mice. Mechanical and thermal stimuli were applied to the peripheral receptive field of spinal neurons on the hindpaw glabrous skin and the evoked activity of neurons was visualized on an oscilloscope and discriminated on a spike amplitude and waveform basis using a CED 1401 interface coupled to Spike2 software (Cambridge Electronic Design). Natural stimuli (dynamic brush, von Frey hairs 0.16–26 g, noxious prod 100 and 150 g/cm<sup>2</sup> mechanical stimulation; thermal water jet 35–45°C) were applied in ascending order of intensity to receptive fields for 10 s and the total number of evoked spikes recorded. Statistical significance for differences between littermates and *Bdnf*<sup>fl/fl</sup>; Avil-CreERT2 mice was determined using a two-way repeated measures ANOVA with Bonferroni post-tests for all measures.

## Mouse behaviour

All behavioural experiments were performed by an experimenter blind to genotype [*Bdnf*<sup>fl/fl</sup> *n* = 8 (four males and six females), *Bdnf*<sup>fl/fl</sup>; Avil-CreERT2 *n* = 10 (three males and five females)]. Mechanical nociceptive thresholds were measured using Randall-Selitto apparatus (Ugo) that applies pressure to the tail with a 3-mm<sup>2</sup> blunt conical probe using a 500 g cut-off. Mechanical sensitivity of the inferior half of the abdomen was assessed using von Frey hair application as described previously (Minett *et al.*, 2014). Rotarod testing was performed over 5 min with the initial starting ramp increasing from 4 rpm to 40 rpm over 30 s using a mouse-adapted apparatus (IITC). Thermal nociceptive thresholds were determined by measuring hindpaw withdrawal latency using the Hargreaves apparatus (IITC) at a ramp of 1.5°C/s with a 30 s cut-off and latency for nociceptive behaviour on a hotplate (Ugo Basile) at 50°C and 55°C. Thermal place preference plates (Bioseb) were used to determine temperature preference of mice to 30°C (warm), 14°C (cool) and 5°C (cold) temperatures versus a room temperature 20°C plate. All place preference thermal tests were performed with reversed plate temperature settings and the average of the two responses used for statistical analyses. Nociceptive behaviour to cooling acetone was measured following application of one acetone drop to the hindpaw and

nociceptive behaviours measured for 1 min. Statistical significance for differences between littermates and BDNF knockouts was determined using a *t*-test.

## Formalin test

Six *Bdnf*<sup>fl/fl</sup>; Avil-CreERT2 knockout mice (three males and three females) and six *Bdnf*<sup>fl/fl</sup> control mice (three males and three females) were singly housed in Perspex<sup>®</sup> boxes and allowed to habituate to the testing environment for 30 min. Animals were then injected with formalin [intraplantar (i.pl.), 15 μl of 5% dilution of stock formalin (40% w/v) in saline] in the hindpaw. Nociceptive behaviour was measured as licking and biting of the injected paw only. Nociceptive behaviour was recorded at 5 min intervals for a duration of 60 min and divided into two phases, the first phase lasting 0–10 min and the second phase 10–60 min. Statistical significance for differences between littermates and *Bdnf*<sup>fl/fl</sup>; Avil-CreERT2 mice over the time course or for comparison of biphasic behaviour was determined using two-way repeated measures ANOVA with Bonferroni post-tests and *t*-test, respectively.

## Neuropathic pain models

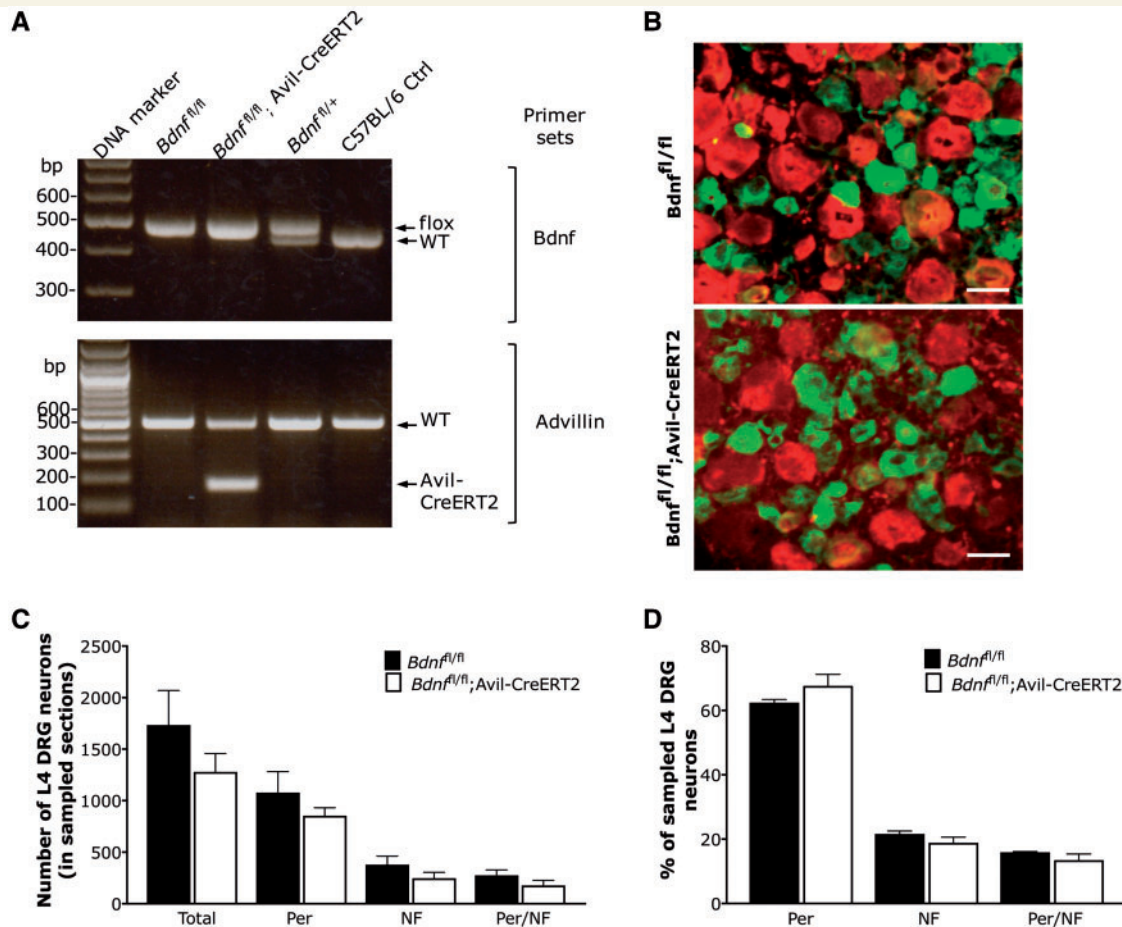
Neuropathic pain was assessed with two peripheral nerve injury models. For the partial sciatic nerve ligation model (Seltzer model), the surgical procedure was carried out on seven *Bdnf*<sup>fl/fl</sup> control mice (one male and six females) and eight *Bdnf*<sup>fl/fl</sup>; Avil-CreERT2 knockout mice (six males and two females) as previously described (Zhao *et al.*, 2010). Briefly, animals were anaesthetized using isoflurane. A 0.5 cm incision was made in the skin of the upper left leg and blunt scissors were used to dissect muscle layers apart to access the sciatic nerve. A tight ligation between one-half to one-third of the nerve was made using 6-0 mersilk suture (Ethicon). The skin was closed using 4-0 mersilk sutures (Ethicon). For spinal nerve ligation, a modified version of the Kim and Chung model (Kim and Chung, 1992; Minett *et al.*, 2012) of peripheral neuropathy was adapted for use on seven *Bdnf*<sup>fl/fl</sup> control mice (three males and four females) and seven *Bdnf*<sup>fl/fl</sup>; Avil-CreERT2 knockout mice (five males and two females). Briefly, under the same anaesthesia, a midline incision was made in the skin of the back at the L4–S2 levels and a further incision through the left paraspinal muscle was made to access the transverse processes at the L4–S1 levels. The L4 transverse process was removed using a blunt fine forceps and the left L5 and L4 spinal nerves identified. The L5 spinal nerve was separated and tightly ligated with 8-0 silk sutures and transected just distal to the ligature. The incision was closed in layers.

Statistical significance for differences between *Bdnf*<sup>fl/fl</sup> littermate controls and *Bdnf*<sup>fl/fl</sup>; Avil-CreERT2 knockout mice was determined using a two-way repeated measures ANOVA with Bonferroni post-tests. Statistical significance of changes in pain behaviour over time compared to baseline within each group was determined with a one-way repeated measures ANOVA with Dunnett's post-tests.

## Hyperalgesic priming model

A model of hyperalgesic priming was first established with wild-type male C57BL/6J mice. Mechanical sensitivity of the





**Figure 1 Characterization of BDNF knockout mice.** (A) Genotyping analysis with PCR. The representative gel analysis of PCR products using both the BDNF primer set and the Avil-CreERT2 primer set is shown in *top* and *bottom* panels, respectively. Mice homozygous for the floxed *Bdnf* band and heterozygous for the Avil-CreERT2 band were defined as *Bdnf<sup>fl/fl</sup>; Avil-CreERT2* mice. Mice only homozygous for the floxed *Bdnf* band were defined as *Bdnf<sup>fl/fl</sup>* littermate controls. The genomic DNA from C57BL/6J wild-type (WT) mice and heterozygous floxed *Bdnf* (*Bdnf<sup>fl/+</sup>*) mice were used as controls. (B) DRG sections were labelled with large diameter DRG neuron marker neurofilament (in red), and small-medium diameter DRG neuron marker peripherin (in green). Scale bar = 50  $\mu$ m. (C) The total number of DRG neurons either expressing neurofilament (NF), or peripherin (Per) in sampled L4 DRG sections, or both NF and Per were counted, respectively. (D) The proportions of neurofilament and peripherin positive neurons in sampled L4 DRG sections are presented. Both total number and proportion are normal in BDNF knockout mice ( $n = 3$ ) compared to littermate controls ( $n = 3$ ). Data were analysed with Student's *t*-test and  $P > 0.05$ . Additional images—for colourblind readers—are available in the Supplementary material.

hindpaw was measured using the up-down method to determine the 50% mechanical withdrawal threshold to von Frey application (Chaplan *et al.*, 1994). The primed group of mice was injected with carrageenan (i.p. 1% 20  $\mu$ l, Sigma Aldrich) on Day 0, followed by administration of prostaglandin E2 (PGE2) in the same paw (i.p. 100 ng in 25  $\mu$ l, Cayman Chemical) in both primed and unprimed mice on Day 6 ( $n = 6$  in both groups). We tested *Bdnf<sup>fl/fl</sup>; Avil-CreERT2* male mice ( $n = 6$ ) and their littermate male controls *Bdnf<sup>fl/fl</sup>* ( $n = 7$ ) in this model of hyperalgesic priming using the same time course of drug administration. Statistical significance for differences between primed/unprimed mice or *Bdnf<sup>fl/fl</sup>; Avil-CreERT2*/littermates was determined using a two-way repeated measures ANOVA with Bonferroni post-tests. Statistical significance of changes in pain behaviour over time compared to baseline within each group was determined using a one-way repeated measures ANOVA with Dunnett's post-tests.

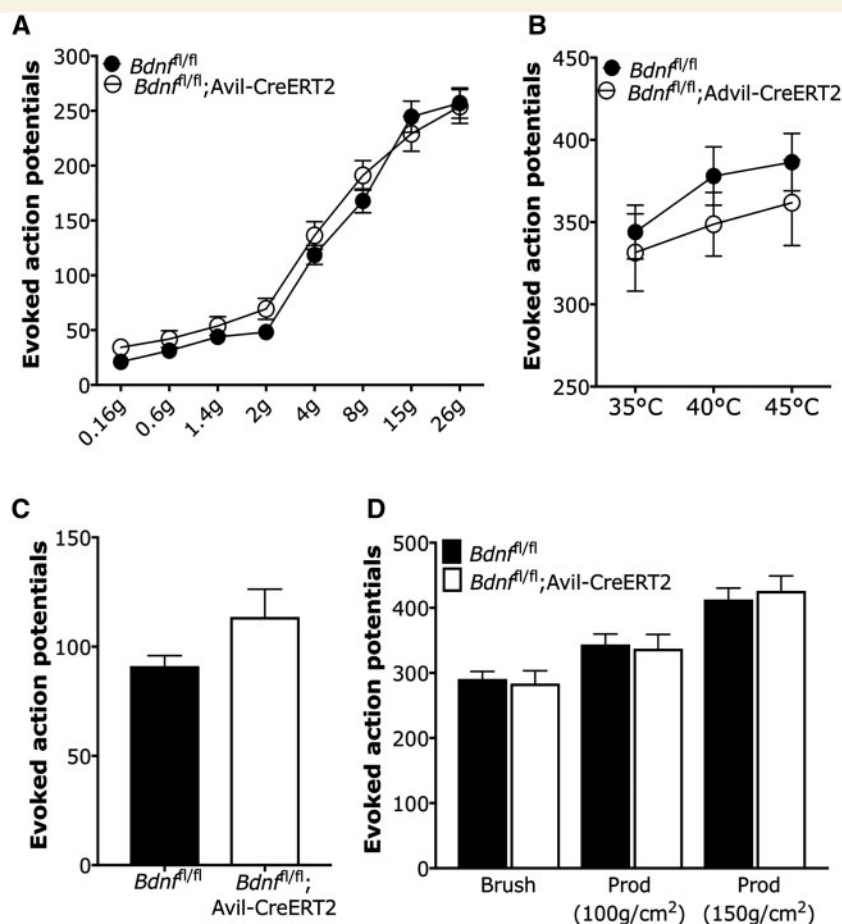
## Statistical analysis

All values are presented as means  $\pm$  SEM. Data were analysed using the GraphPad Prism 7. Student's *t*-test (two-tailed) was used for comparison of difference between two groups. Multiple groups were compared using one-way or two-way analysis of variance with Dunnett's or Bonferroni post-tests, respectively. Differences were considered significant at  $P < 0.05$ .

## Results

### Generation of sensory neuron-derived BDNF knockout mice

To generate *Bdnf<sup>fl/fl</sup>; Avil-CreERT2* mice, we crossed *Bdnf<sup>fl/fl</sup>* mice with Avil-CreERT2 mice on a *Bdnf<sup>fl/fl</sup>* background. The



**Figure 2** Evoked activity of wide-dynamic range neurons in deep dorsal horn was assessed by *in vivo* electrophysiology.

(A) Evoked activity to mechanical punctate stimulated with von Frey hair on hindpaw. (B) Thermal stimuli. (C) Noxious cold. (D) Dynamic brush and prod stimulation. Eighty-six WDR neurons from *Bdnf<sup>fl/fl</sup>; Avil-CreERT2* and 105 WDR neurons from *Bdnf<sup>fl/fl</sup>* mice were recorded. Data were analysed with two-way repeated measures ANOVA with Bonferroni post-tests and  $P > 0.05$  in all measures.

genotypes of offspring were analysed with standard PCR. A homozygous floxed *Bdnf* band and an Avil-CreERT2 band defined BDNF conditional knockouts (Fig. 1A). In contrast, the *Bdnf<sup>fl/fl</sup>* littermate control mice only exhibited a homozygous floxed *Bdnf* band (Fig. 1A). We have previously confirmed *Bdnf* deletion in DRG mRNA of BDNF knockout mice using real-time qRT-PCR, showing about 70% reduction of *Bdnf* mRNA in DRG 10 days after tamoxifen injection (Neumann *et al.*, 2016). The remaining ~30% of *Bdnf* mRNA may come from satellite glial cells (Wetmore and Olson, 1995), or may be attributed to degraded mRNA in DRG neurons.

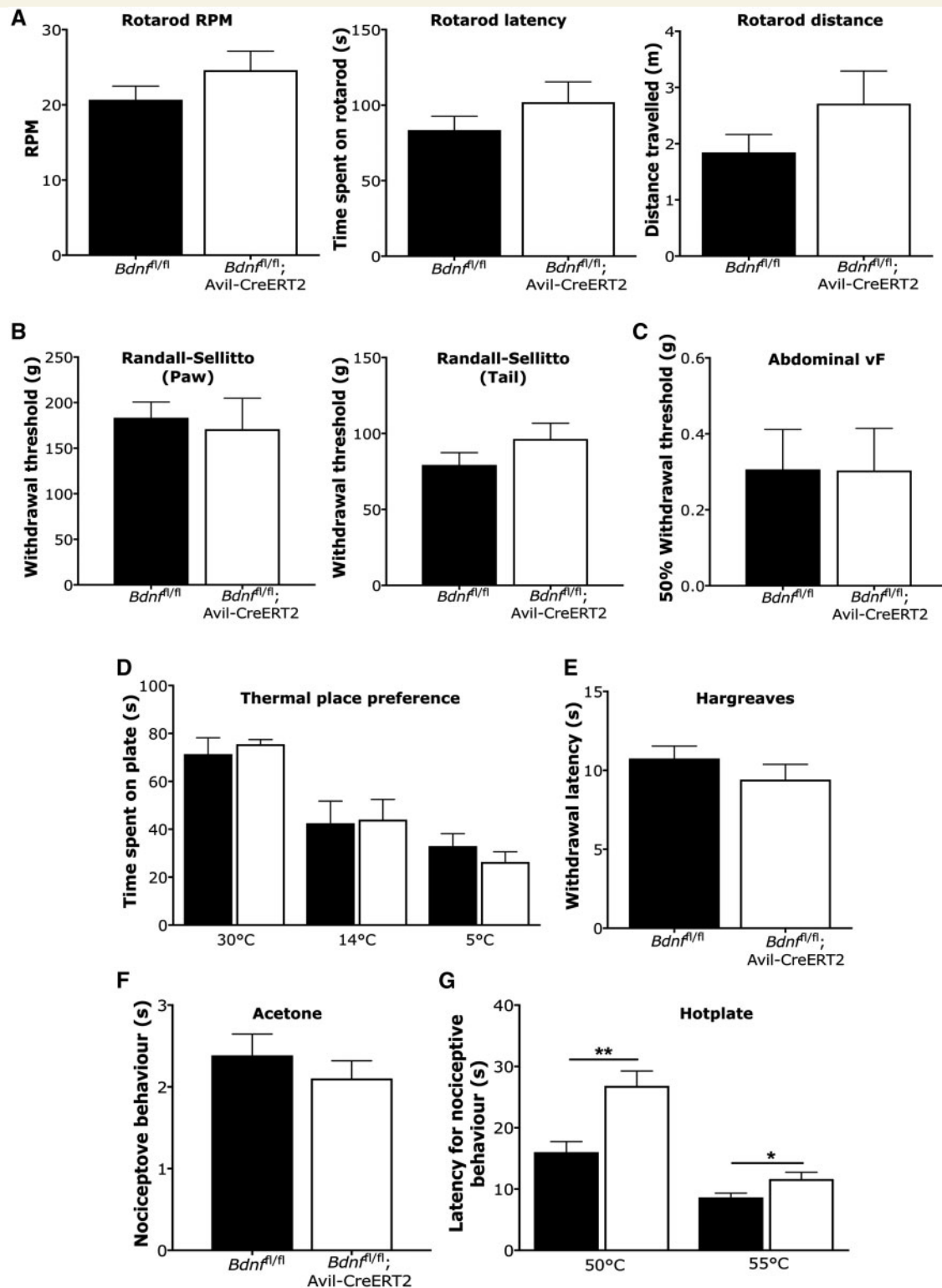
## Conditional BDNF deletion in adult mice does not affect the survival of DRG neurons

We then performed immunohistochemical staining of lumbar DRG sections to determine whether deletion of BDNF from sensory neurons affects survival of DRG neurons using the small to medium diameter neuron

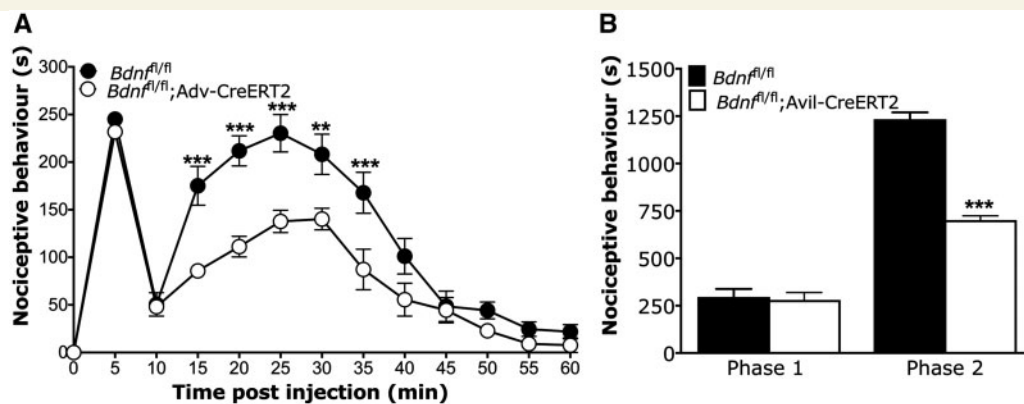
(nociceptor) marker peripherin, and large diameter neuron marker neurofilament heavy chain (NF200). Our data show that most nociceptors were labelled with anti-peripherin, and most large diameter DRG neurons were NF200-positive in both *Bdnf<sup>fl/fl</sup>; Avil-CreERT2* mice and *Bdnf<sup>fl/fl</sup>* mice (Fig. 1B). There was no apparent difference between tamoxifen-treated *Bdnf* conditional knockouts and littermate controls in the total number and proportion of neurofilament and peripherin-positive neurons (Fig. 1C and D). This is similar to our previous findings with BDNF deletion from  $\text{Na}_v1.8$ -expressing neurons (Zhao *et al.*, 2006).

## Acute pain processing

To assess sensory coding of spinal neurons, we used extracellular recordings of evoked activity of L4 deep dorsal horn WDR neurons in *Bdnf<sup>fl/fl</sup>* mice and *Bdnf<sup>fl/fl</sup>; Avil-CreERT2* mice. Mechanical and thermal stimuli were applied to the peripheral hindpaw receptive field of neurons and evoked action potentials were recorded as previously described (Sikandar *et al.*, 2013; Minett *et al.*, 2015). For mechanical sensory coding, we compared evoked activity of



**Figure 3 Motor function and acute pain behaviour tests.** (A) Motor function was assessed with rotarod activity with measures of speed (left), time spent on rotarod (middle) and distance travelled (right). (B) Mechanical pain thresholds were examined with Randall-Sellitto apparatus for the hindpaw (left) and tail (right). (C) Mechanical sensitivity of the abdominal wall was measured with application of von Frey (vF) hairs. (D) Thermal place preference was measured at 30, 14 and 4°C. (E) Hindpaw thermal pain thresholds to ramped heat were assessed with the Hargreaves test. (F) Hindpaw sensitivity to cooling was measured with acetone. (G) Latencies for nociceptive behaviour elicited by noxious heat were examined with a hotplate test. Data were analysed with Student's *t*-test (\**P* < 0.05, \*\**P* < 0.01).



**Figure 4 Formalin test.** (A) Time course of formalin-induced nociceptive responses. (B) Phase I and phase II summed nociceptive behaviour. A significant attenuation of pain behaviour in phase II was observed in BDNF knockout mice. *Bdnf<sup>fl/fl</sup>* ( $n = 6$ ) and *Bdnf<sup>fl/fl</sup>; Avil-CreERT2* ( $n = 6$ ) were used. Data were analysed with either two-way repeated measures ANOVA with Bonferroni post-tests (A,  $**P < 0.01$ ,  $***P < 0.001$ ) or Student's *t*-test (B,  $***P < 0.001$ ).

dorsal horn neurons to a range of intensities of punctate von Frey hairs (Fig. 2A), as well as two noxious prods and a low threshold brush stimulation applied to the whole receptive field of the hindpaw (Fig. 2D). For thermal sensory coding, we compared evoked activity to innocuous and noxious heat (Fig. 2B), as well as noxious cold with ethyl chloride (Fig. 2C). Dorsal horn neurons in both conditional BDNF knockouts and littermate controls showed graded coding to increasing intensities of both mechanical and thermal stimuli. However, we observed no significant difference between groups of evoked activity to any mechanical or thermal stimulation parameter ( $P > 0.05$  in all measures, two-way repeated measures ANOVA with Bonferroni post-tests). These findings indicate that deletion of *Bdnf* from DRG does not alter normal spinal sensory coding of mechanical and thermal stimuli.

Standardized behavioural assays were used to assess thermal and mechanical pain thresholds in BDNF knockout mice (Fig. 3). Deletion of *Bdnf* from sensory neurons had no impact on motor function, as shown by normal rotarod activities measured in speed (Fig. 3A, *t*-test,  $P = 0.21$ ), time spent on the rotarod (Fig. 3A, *t*-test,  $P = 0.26$ ) and distance travelled (Fig. 3A, *t*-test,  $P = 0.18$ ). We also observed no significant difference in mechanical pain thresholds using the Randall-Sellitto test with a noxious probe applied to the paw (Fig. 3B, *t*-test,  $P = 0.72$ ) and tail (Fig. 3B, *t*-test,  $P = 0.21$ ) (Randall and Sellitto, 1957). There was also no significant difference between these two groups on the 50% mechanical withdrawal thresholds for fine filament von Frey hairs applied to the abdomen (Fig. 3C, *t*-test,  $P = 0.99$ ).

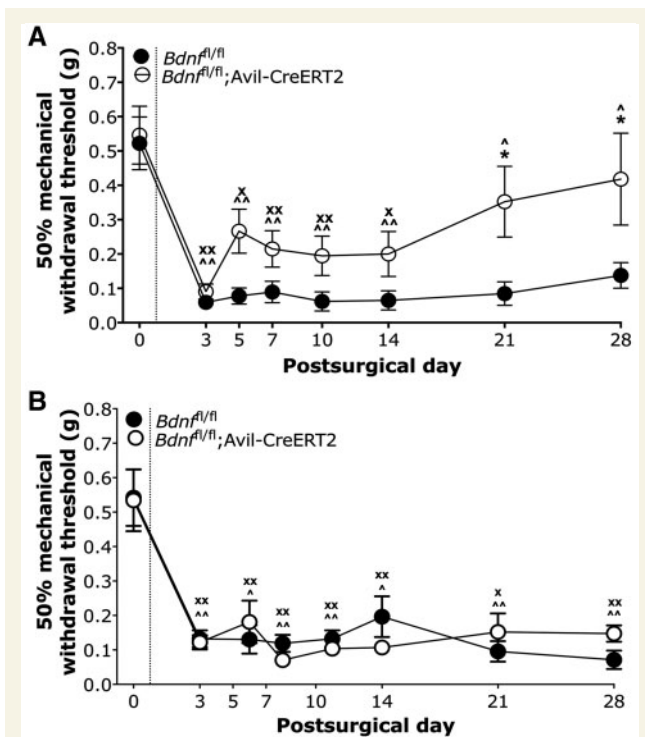
Thermal place preference for innocuous warm (30°C), cool (14°C) and noxious cold (5°C) revealed no changes in thermal sensory function in the BDNF knockouts (Fig. 3D, *t*-test,  $P = 0.61$ ,  $P = 0.91$  and  $P = 0.36$ , respectively), and thermal pain thresholds in the Hargreaves test was comparable to littermate controls (Fig. 3E, *t*-test,  $P = 0.30$ ) (Hargreaves et al., 1988). Acetone applied to

the hindpaw did not evoke significantly different pain behaviours from wild-type mice, also indicating no altered sensitivity to cold stimulation (Fig. 3F, *t*-test,  $P = 0.47$ ). However, we did observe a hyposensitivity to noxious heat at temperatures of 50°C and 55°C in the hotplate test, which assesses supraspinally mediated nociceptive behaviours (Fig. 3G, *t*-test,  $P = 0.02$  and  $P = 0.03$ , respectively) (Woolfe and Macdonald, 1944). This mild thermal phenotype is similar to what we have previously reported with BDNF deletion from *Na<sub>v</sub>1.8*-expressing DRG neurons (Zhao et al., 2006).

## Chronic pain models of inflammation, neuropathy and hyperalgesic priming

We used the intraplantar formalin test to assess effects of BDNF deletion from sensory neurons on inflammatory pain behaviour (Hunskaar et al., 1985) (Fig. 4). *Bdnf<sup>fl/fl</sup>; Avil-CreERT2* mice show comparable nociceptive behaviour to littermate *Bdnf<sup>fl/fl</sup>* control mice in the first phase but show deficits in the second phase ( $P < 0.001$ , *t*-test). To determine the effects on evoked pain behaviour following neuropathy, we used the modified Chung model and partial sciatic nerve ligation model (Seltzer model). Following the modified Chung model of neuropathy (Fig. 5A), we observed prolonged mechanical hypersensitivity for the duration of 28 days in *Bdnf<sup>fl/fl</sup>* control mice ( $P < 0.05$  on Days 14, 21 and 28, and  $P < 0.01$  on Days 3, 5, 7 and 10, one-way repeated measures ANOVA with Dunnett's post-tests). In *Bdnf<sup>fl/fl</sup>; Avil-CreERT2* mice, we observed an acute drop in mechanical withdrawal thresholds lasting up to 14 days ( $P < 0.05$  on Days 5 and 14,  $P < 0.01$  on Days 3, 7 and 10, one-way repeated measures ANOVA with Dunnett's post-tests), but began to see recovery from Day 5 followed by full recovery of withdrawal thresholds back to baseline in the chronic, later phases of the model at Days 21 and 28 ( $P > 0.05$  on Days 21 and 28, one-way repeated measures ANOVA with Dunnett's post-tests). Following partial





**Figure 5 Neuropathic pain models.** (A) A modified Chung surgical model was used to assess development of neuropathic pain. (B) The Seltzer surgical model of neuropathy. *Bdnf*<sup>fl/fl</sup> ( $n = 7$ ) and *Bdnf*<sup>fl/fl</sup>; Avil-CreERT2 mice ( $n = 7$ ) were tested in these two models. Data were analysed using two-way repeated measures ANOVA with Bonferroni post-tests ( $*P < 0.05$ ), one-way repeated measures ANOVA with Dunnett's post-tests for *Bdnf*<sup>fl/fl</sup> group ( $^{\wedge}P < 0.05$ ,  $^{\wedge\wedge}P < 0.01$ ), and one-way repeated measures ANOVA with Dunnett's post-tests for *Bdnf*<sup>fl/fl</sup>; Avil-CreERT2 group ( $^{\times}P < 0.05$ ,  $^{\times\times}P < 0.01$ ).

sciatic nerve ligation (Fig. 5B), we observed persistent mechanical hypersensitivity in both *Bdnf*<sup>fl/fl</sup> control mice and *Bdnf*<sup>fl/fl</sup>; Avil-CreERT2 knockout mice ( $P < 0.05$  and  $P < 0.01$  in both groups at all measured time points, one-way repeated measures ANOVA with Dunnett's post-tests). Our combined data from the inflammatory formalin test and modified Chung model suggest that BDNF expressed in sensory neurons drives chronic, but not acute, nociceptive processes in inflammatory and some transection-related neuropathic pain.

To explore the distinct contribution of primary afferent-derived BDNF in acute and chronic nociceptive processing further, we established a model of hyperalgesic priming to model the transition from acute to chronic pain in rodents, as described in other studies (Aley *et al.*, 2000; King *et al.*, 2012) (Fig. 6). Here, a prior injury can prime pain pathways to produce chronic pain following a subsequent insult. First, we validated this model of hyperalgesic priming in C57BL/6J wild-type mice using an intraplantar priming injection of 25  $\mu$ l 1% carrageenan. This induces a transient mechanical hypersensitivity with a recovery to baseline thresholds within 72 h (Fig. 6A). At Day 6, intraplantar injection of PGE2 leads to a short-lasting

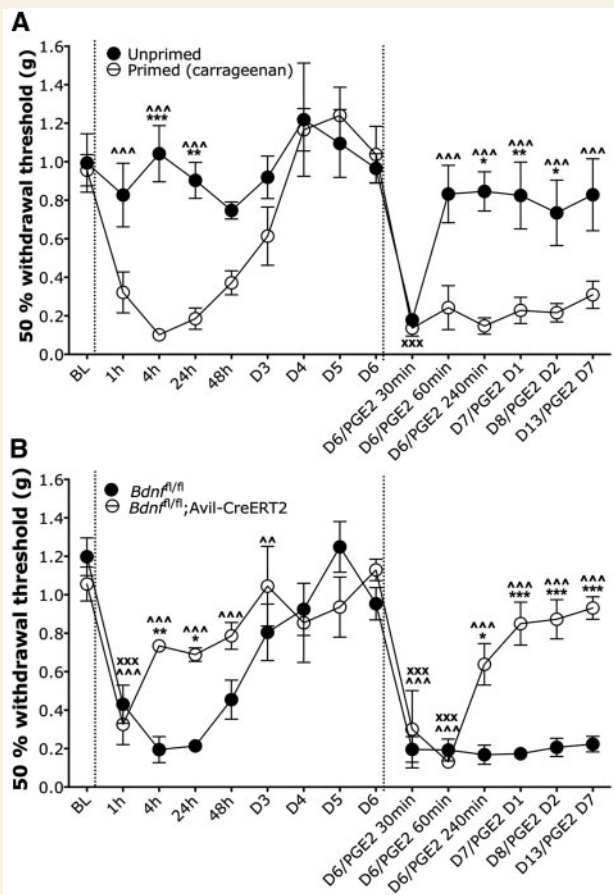
mechanical hypersensitivity in unprimed control mice, with recovery to baseline thresholds within 1 h (Fig. 6A: one-way repeated measures ANOVA with Dunnett's post-tests,  $P < 0.001$  at 30 min post-PGE2 in unprimed group). In contrast, primed mice develop long-lasting mechanical hypersensitivity lasting up to 7 days (Fig. 6A: one-way repeated measures ANOVA with Dunnett's post-tests,  $P < 0.001$  at all time points post-PGE2 in primed group). We used this model to determine the contribution of BDNF to the transition from acute to chronic pain (Fig. 6B). We found that priming with intraplantar injection of carrageenan induced a transient mechanical hypersensitivity in both *Bdnf* conditional knockouts and littermate controls. Intraplantar injection of carrageenan alone is an established model of acute inflammation, and like our findings in the first phase formalin behaviour (Fig. 4), we observed no difference in nociceptive behaviour between BDNF knockouts and littermate controls. Littermate control mice recovered to baseline thresholds within 72 h (Fig. 6B, one-way repeated measures ANOVA with Dunnett's post-tests,  $P < 0.001$  up to 48 h post-carrageenan in *Bdnf*<sup>fl/fl</sup> group). However, we observed a significantly faster recovery to baseline thresholds in *Bdnf*<sup>fl/fl</sup>; Avil-CreERT2 mice (Fig. 6B, one-way repeated measures ANOVA with Dunnett's post-tests,  $P < 0.001$  up to 1 h post-carrageenan in *Bdnf*<sup>fl/fl</sup>; Avil-CreERT2 group). At Day 6, mechanical withdrawal thresholds had returned to baseline values and effects of intraplantar injection of PGE2 were assessed. As demonstrated in our validation study in wild-type C57BL/6J mice (Fig. 6A), primed *Bdnf*<sup>fl/fl</sup> littermate controls developed prolonged mechanical hypersensitivity lasting up to 7 days post-PGE2 (Fig. 6B, one-way repeated measures ANOVA with Dunnett's post-tests,  $P < 0.001$  up to Day 7 post-PGE2 in *Bdnf*<sup>fl/fl</sup> group). In contrast, primed *Bdnf*<sup>fl/fl</sup>; Avil-CreERT2 mice developed a shorter lasting hypersensitivity lasting only up to 60 min post-PGE2 (Fig. 6B, one-way repeated measures ANOVA with Dunnett's post-test,  $P < 0.001$  up to 1 h post-PGE2 in *Bdnf*<sup>fl/fl</sup>; Avil-CreERT2 group).

## Discussion

We deleted the *Bdnf* gene from adult peripheral sensory neurons to determine its contribution to acute and chronic pain processing. Our combined behavioural, electrophysiological and immunohistochemistry data show that BDNF released from sensory neurons does not significantly contribute to acute pain, but is necessary for the transition from acute to chronic inflammatory pain and some neuropathic pain states.

Tissue-specific gene ablation can provide important information about the relevance of new drug targets, and time-specific gene deletion overcomes potential physiological compensatory mechanisms that can mask the true phenotypic contribution of a gene (Feil *et al.*, 1997; Metzger and Chambon, 2001). Advillin (encoded by *Avil*) is a pan-





**Figure 6 Hyperalgesic priming model.** (A) A model of hyperalgesic priming with wild-type C57BL/6 mice shows that priming mice with intraplantar carrageenan (first dotted line) confers prolonged mechanical hypersensitivity to PGE2 (second dotted line) compared to control unprimed mice ( $n = 6$  in both groups). (B)  $Bdnf^{fl/fl}$ ; Avil-CreERT2 mice ( $n = 6$ ) and their littermate controls  $Bdnf^{fl/fl}$  control mice ( $n = 7$ ) develop transient mechanical hypersensitivity following the priming injection of intraplantar carrageenan, but BDNF mutant mice do not develop prolonged mechanical hypersensitivity following intraplantar PGE2, unlike their littermate controls. Data were analysed with two-way repeated measures ANOVA with Bonferroni post-tests ( $*P < 0.05$ ,  $**P < 0.01$ ,  $***P < 0.001$ ), one-way repeated measures ANOVA with Dunnett's post-tests for primed/ $Bdnf^{fl/fl}$  groups ( $^{***}P < 0.001$ ), and one-way repeated measures ANOVA with Dunnett's post-tests for unprimed/ $Bdnf^{fl/fl}$ ; Avil-CreERT2 groups ( $^{xxx}P < 0.001$ ).

neuronal marker of spinal and cranial sensory ganglia (Marks *et al.*, 1998; Ravenall *et al.*, 2002; Zurborg *et al.*, 2011), and we have previously generated BAC transgenic mice using the *Avil* promoter to drive a tamoxifen-inducible CreERT2 recombinase construct that permits gene deletion in adult animals (Lau *et al.*, 2011). Here we used floxed *Bdnf* mice for Cre-mediated excision of *Bdnf* from sensory ganglia to determine the contribution of primary afferent-derived BDNF on the transition from acute to chronic pain. To assess the effects of *Bdnf* deletion from sensory neurons at the cell population level in DRG, we used immunostaining with the neuronal markers

neurofilament NF200 and peripherin. We found no difference in the total number of lumbar DRG neurons or proportions of large or small/medium diameter afferents following *Bdnf* deletion. This is in line with our previous findings that *Bdnf* deletion from  $Na_v1.8$ -expressing neurons, an estimated 75% of all DRG neurons in lumbar ganglia (Shields *et al.*, 2012), also results in a normal complement of DRG neurons (Zhao *et al.*, 2006).

To determine potential changes in spinal excitability we performed *in vivo* electrophysiological recordings from WDR neurons in the deep dorsal horn. WDR neurons in the deep dorsal horn receive converging primary afferent input, and their neural coding to peripheral stimulation conveys whether peripheral and central nociceptive processing has been significantly altered (Abrahamsen *et al.*, 2008; Bannister *et al.*, 2011; Sikandar *et al.*, 2013; O'Neill *et al.*, 2015). We measured evoked activity of spinal neurons to mechanical and thermal stimuli of low- and high-threshold intensities and found no significant impairment of graded coding to sensory stimulation in BDNF knockout mice (Fig. 2). We also found no difference in the overall amount of neuronal firing evoked by peripheral stimulation. These findings are in line with the normal neuronal complement of DRG neurons, indicating that peripheral input to the spinal cord is normal following *Bdnf* deletion from sensory neurons. Moreover, behavioural assays measuring acute reflexes to noxious stimuli showed no significant difference between BDNF knockout mice and littermate controls to mechanical, cold and most thermal assays (Fig. 3). However, the knockout mice were hyposensitive to the hotplate assay—this recruits bulbospinal reflexes, indicating that BDNF expression in sensory ganglia contributes to reflexes mediated from the brainstem. We have previously observed a similar hotplate phenotype following BDNF deletion from  $Na_v1.8$ -expressing neurons (Zhao *et al.*, 2006).

Several lines of evidence support the role of enhanced DRG and spinal BDNF expression in persistent pain that follows injury-induced sensitization of nociceptors (Cho *et al.*, 1997, 1998; Lever *et al.*, 2003; Coull *et al.*, 2005; Li *et al.*, 2006; Lin *et al.*, 2011; Melemedjian *et al.*, 2013). However, the relative importance of BDNF released either from microglia or sensory neurons in chronic pain states is still unclear (Coull *et al.*, 2005; Zhuo *et al.*, 2011), and the contribution of microglial activity to persistent pain is further confounded by well-established sex differences in immune-related nociceptive processing (Sorge *et al.*, 2011, 2015). In this study, we examine the role of primary afferent-derived BDNF on pain processing using both male and female mice.

To study the contribution of sensory BDNF to the development and maintenance of chronic pain, we used the formalin model of inflammation, a modified Chung and Seltzer models of neuropathy and a model of hyperalgesic priming. The formalin model entails biphasic pain behaviour—the first phase reflects acute, peripheral hypersensitivity and the second phase relates to chronic maintenance of

pain through central sensitization (Tjolsen *et al.*, 1992; Berge, 2011). We found comparable first phase nocifensive behaviour between BDNF knockouts and littermate controls, but significantly reduced second phase nocifensive behaviour in knockouts (Fig. 4). Similarly, we found that nerve-injury induced mechanical hypersensitivity was comparable to littermates in the acute phase following a modified Chung surgery, but BDNF knockout mice showed recovery of pain behaviour in a later chronic phase from 3 weeks after surgery (Fig. 5). Our data in the formalin and modified Chung surgery models suggest that BDNF signalling in sensory neurons is important for chronic, but not acute, pain processing.

Notably, we did not observe any difference in the development of mechanical hypersensitivity in the Seltzer model between BDNF knockout mice and littermate controls at any time point (Fig. 5B). Our observations support previous findings that the development of chronic pain in the modified Chung model is dependent on the expression of BDNF in sensory neurons, unlike partial sciatic nerve ligation (Obata *et al.*, 2006). Previous studies have also reported differences in behavioural phenotypes (Kim *et al.*, 1997; Dowdall *et al.*, 2005) and in the contribution of distinct neuronal subsets across different rodent models of neuropathy (Minett *et al.*, 2012). Moreover, differences in levels of BDNF expression in DRG following distinct rhizotomy and transection models of neuropathy have been reported previously (Obata and Noguchi, 2006; Obata *et al.*, 2006).

We also validated a model of hyperalgesic priming to determine the role of sensory BDNF in the transition from acute to chronic pain. Hyperalgesic priming of the nociceptive system reflects long-lasting, latent hyper-responsiveness of nociceptors to inflammatory mediators subsequent to an inflammatory or neuropathic insult (Reichling and Levine, 2009). In rodents, repeated injections of algogenic substances with short-lasting acute effects can produce long-lasting hypersensitivity (Aley *et al.*, 2000; Parada *et al.*, 2003; Sluka *et al.*, 2003; Melemedjian *et al.*, 2014). Here we used intraplantar carrageenan as a priming agent (Fig. 6) to produce prolonged mechanical hypersensitivity to intraplantar PGE2 compared to animals that had not been primed. In *Bdnf<sup>fl/fl</sup>* mice, we confirmed that priming with carrageenan precipitates long-lasting changes in PGE2-induction of pain behaviour. In contrast, we found that administration of intraplantar carrageenan in BDNF knockout mice produces an acute mechanical hypersensitivity, but does not prime mice to develop prolonged hypersensitivity to PGE2. Our data suggest that BDNF expression in sensory neurons mediates the transition from acute to chronic pain in a model of hyperalgesic priming. Some forms of hyperalgesic priming have been shown to be sexually dimorphic (Joseph *et al.*, 2003; Khomula *et al.*, 2017). Accordingly, we only used male mice for our hyperalgesic priming experiments; however, our other chronic pain models were carried out with mixed genders, and our findings overall suggest that

primary afferent-derived BDNF contributes to pain chronification in both males and females—despite the specificity of this particular hyperalgesic priming model to precipitate a behavioural phenotype in males only. Other studies support our findings of this pro-nociceptive role of BDNF in pain chronification, where spinal BDNF mediates prolonged PGE2 sensitivity in rodents primed with IL-6 (Melemedjian *et al.*, 2013) and sequestering BDNF in the cisterna magna can prevent IL-6-mediated hyperalgesic priming in a model of migraine (Burgos-Vega *et al.*, 2016).

An important implication of our findings is that BDNF expressed in sensory neurons is not essential for acute mechanical pain, but is critical for the transition from acute to chronic pain in models of inflammation, neuropathy and hyperalgesic priming. Studies of long term potentiation suggest that both pre- and postsynaptic release of BDNF regulates consolidation of late long term potentiation (Dean *et al.*, 2009; Jourdi *et al.*, 2009). Groth and colleagues have shown that BDNF-like immunoreactivity increased by 50% in laminae I/II from tissue obtained 8 h after intraplantar injections of carrageenan and this increase was blocked by intrathecal injection of BDNF antisense oligos (Groth and Aanonsen, 2002). Previous studies have also shown that spinal BDNF regulates synthesis of atypical PKCs via mTORC1 and enhances PKM $\zeta$  phosphorylation (Melemedjian *et al.*, 2013, 2014). These intracellular signalling events are required for the initiation and maintenance of chronic pain. Alongside postsynaptic effects of BDNF-TrkB signalling, BDNF also reduces presynaptic inhibition following nerve injury through a depolarizing shift in the reversal potential and reduction in conductance of GABA<sub>A</sub> receptors in primary afferents (Chen *et al.*, 2014a). These may be important mechanisms underlying the transition to and maintenance of chronic pain at the spinal level. Different sources of BDNF may also drive nociceptive mechanisms in different preclinical pain models, i.e. the gender-specific contribution of microglial BDNF to chronic pain in a model of sciatic nerve cuffing (Coull *et al.*, 2005). A mechanistic discrepancy of neurotrophin signalling between rodent models likely underlies our findings that BDNF released from sensory neurons is essential for the development of chronic pain in a model of full, but not partial, nerve ligation (Obata *et al.*, 2006).

In conclusion, our findings demonstrate the pro-nociceptive role of primary-afferent derived BDNF in mediating the transition from acute to chronic pain. These findings support the therapeutic potential of modulating BDNF for chronic pain syndromes (Nijs *et al.*, 2015). Because BDNF expression is ubiquitously expressed in the nervous system, the development of targeted gene therapies for subsets of sensory neurons holds promise for providing adequate pain relief and overcoming side-effects arising from central modulation (Glorioso and Fink, 2009; Fink *et al.*, 2011).

## Funding

This work was supported by the Wellcome Trust (200183/Z/15/Z to J.N.W. and J.Z., and 101054/Z/13/Z to J.N.W.), the RCUK Medical Research Council (G091905 to J.N.W.) and the Arthritis Research UK (507928 GNRK G95 to J.N.W.)

## Supplementary material

Supplementary material is available at *Brain* online.

## References

- Abrahamsen B, Zhao J, Asante CO, Cendan CM, Marsh S, Martinez-Barbera JP, et al. The cell and molecular basis of mechanical, cold, and inflammatory pain. *Science* 2008; 321: 702–5.
- Aley KO, Messing RO, Mochly-Rosen D, Levine JD. Chronic hypersensitivity for inflammatory nociceptor sensitization mediated by the epsilon isoform of protein kinase C. *J Neurosci* 2000; 20: 4680–5.
- Bannister K, Sikandar S, Bauer CS, Dolphin AC, Porreca F, Dickenson AH. Pregabalin suppresses spinal neuronal hyperexcitability and visceral hypersensitivity in the absence of peripheral pathophysiology. *Anesthesiology* 2011; 115: 144–52.
- Berge OG. Predictive validity of behavioural animal models for chronic pain. *Br J Pharmacol* 2011; 164: 1195–206.
- Burgos-Vega CC, Quigley LD, Avona A, Price T, Dussor G. Dural stimulation in rats causes brain-derived neurotrophic factor-dependent priming to subthreshold stimuli including a migraine trigger. *Pain* 2016; 157: 2722–30.
- Chaplan SR, Bach FW, Pogrel JW, Chung JM, Yaksh TL. Quantitative assessment of tactile allodynia in the rat paw. *J Neurosci Methods* 1994; 53: 55–63.
- Chen JT, Guo D, Campanelli D, Frattini F, Mayer F, Zhou L, et al. Presynaptic GABAergic inhibition regulated by BDNF contributes to neuropathic pain induction. *Nat Commun* 2014a; 5: 5331.
- Chen W, Walwyn W, Ennes HS, Kim H, McRoberts JA, Marvizon JC. BDNF released during neuropathic pain potentiates NMDA receptors in primary afferent terminals. *Eur J Neurosci* 2014b; 39: 1439–54.
- Cho HJ, Kim JK, Park HC, Kim JK, Kim DS, Ha SO, et al. Changes in brain-derived neurotrophic factor immunoreactivity in rat dorsal root ganglia, spinal cord, and gracile nuclei following cut or crush injuries. *Exp Neurol* 1998; 154: 224–30.
- Cho HJ, Kim JK, Zhou XF, Rush RA. Increased brain-derived neurotrophic factor immunoreactivity in rat dorsal root ganglia and spinal cord following peripheral inflammation. *Brain Res* 1997; 764: 269–72.
- Cohen-Cory S, Kidane AH, Shirkey NJ, Marshak S. Brain-derived neurotrophic factor and the development of structural neuronal connectivity. *Dev Neurobiol* 2010; 70: 271–88.
- Coull JA, Beggs S, Boudreau D, Boivin D, Tsuda M, Inoue K, et al. BDNF from microglia causes the shift in neuronal anion gradient underlying neuropathic pain. *Nature* 2005; 438: 1017–21.
- Dean C, Liu H, Dunning FM, Chang PY, Jackson MB, Chapman ER. Synaptotagmin-IV modulates synaptic function and long-term potentiation by regulating BDNF release. *Nat Neurosci* 2009; 12: 767–76.
- Dowdall T, Robinson I, Meert TF. Comparison of five different rat models of peripheral nerve injury. *Pharmacol Biochem Behav* 2005; 80: 93–108.
- Feil R, Wagner J, Metzger D, Chambon P. Regulation of Cre recombinase activity by mutated estrogen receptor ligand-binding domains. *Biochem Biophys Res Commun* 1997; 237: 752–7.
- Feil S, Valtcheva N, Feil R. Inducible Cre mice. *Methods Mol Biol* 2009; 530: 343–63.
- Ferrini F, De Koninck Y. Microglia control neuronal network excitability via BDNF signalling. *Neural Plast* 2013; 2013: 429815.
- Fink DJ, Wechuck J, Mata M, Glorioso JC, Goss J, Krisky D, et al. Gene therapy for pain: results of a phase I clinical trial. *Ann Neurol* 2011; 70: 207–12.
- Garraway SM, Petruska JC, Mendell LM. BDNF sensitizes the response of lamina II neurons to high threshold primary afferent inputs. *Eur J Neurosci* 2003; 18: 2467–76.
- Glorioso JC, Fink DJ. Gene therapy for pain: introduction to the special issue. *Gene Ther* 2009; 16: 453–4.
- Groth R, Aanonsen L. Spinal brain-derived neurotrophic factor (BDNF) produces hyperalgesia in normal mice while antisense directed against either BDNF or trkB, prevent inflammation-induced hyperalgesia. *Pain* 2002; 100: 171–81.
- Hargreaves K, Dubner R, Brown F, Flores C, Joris J. A new and sensitive method for measuring thermal nociception in cutaneous hyperalgesia. *Pain* 1988; 32: 77–88.
- Hunskar S, Fasmer OB, Hole K. Formalin test in mice, a useful technique for evaluating mild analgesics. *J Neurosci Methods* 1985; 14: 69–76.
- Joseph EK, Parada CA, Levine JD. Hyperalgesic priming in the rat demonstrates marked sexual dimorphism. *Pain* 2003; 105: 143–50.
- Jourdi H, Hsu YT, Zhou M, Qin Q, Bi X, Baudry M. Positive AMPA receptor modulation rapidly stimulates BDNF release and increases dendritic mRNA translation. *J Neurosci* 2009; 29: 8688–97.
- Kasemeier-Kulesa JC, Morrison JA, Lefcort F, Kulesa PM. TrkB/BDNF signalling patterns the sympathetic nervous system. *Nat Commun* 2015; 6: 8281.
- Kerr BJ, Bradbury EJ, Bennett DL, Trivedi PM, Dassan P, French J, et al. Brain-derived neurotrophic factor modulates nociceptive sensory inputs and NMDA-evoked responses in the rat spinal cord. *J Neurosci* 1999; 19: 5138–48.
- Khomula EV, Ferrari LF, Araldi D, Levine JD. Sexual dimorphism in a reciprocal interaction of ryanodine and IP3 receptors in the induction of hyperalgesic priming. *J Neurosci* 2017; 37: 2032–44.
- Kim KJ, Yoon YW, Chung JM. Comparison of three rodent neuropathic pain models. *Exp Brain Res* 1997; 113: 200–6.
- Kim SH, Chung JM. An experimental model for peripheral neuropathy produced by segmental spinal nerve ligation in the rat. *Pain* 1992; 50: 355–63.
- King T, Qu C, Okun A, Melemedjian OK, Mandell EK, Maskaykina IY, et al. Contribution of PKMzeta-dependent and independent amplification to components of experimental neuropathic pain. *Pain* 2012; 153: 1263–73.
- Lau J, Minett MS, Zhao J, Dennehy U, Wang F, Wood JN, et al. Temporal control of gene deletion in sensory ganglia using a tamoxifen-inducible Advillin-Cre-ERT2 recombinase mouse. *Mol Pain* 2011; 7: 100.
- Lever I, Cunningham J, Grist J, Yip PK, Malcangio M. Release of BDNF and GABA in the dorsal horn of neuropathic rats. *Eur J Neurosci* 2003; 18: 1169–74.
- Lever IJ, Bradbury EJ, Cunningham JR, Adelson DW, Jones MG, McMahon SB, et al. Brain-derived neurotrophic factor is released in the dorsal horn by distinctive patterns of afferent fiber stimulation. *J Neurosci* 2001; 21: 4469–77.
- Li L, Xian CJ, Zhong JH, Zhou XF. Upregulation of brain-derived neurotrophic factor in the sensory pathway by selective motor nerve injury in adult rats. *Neurotox Res* 2006; 9: 269–83.
- Lin Y-T, Ro L-S, Wang H-L, Chen J-C. Up-regulation of dorsal root ganglia BDNF and trkB receptor in inflammatory pain: an in vivo and in vitro study. *J Neuroinflammation* 2011; 8: 126.
- Marks PW, Arai M, Bandura JL, Kwiatkowski DJ. Advillin (p92): a new member of the gelsolin/villin family of actin regulatory proteins. *J Cell Sci* 1998; 111 (Pt 15): 2129–36.



- Melemedjian OK, Tillu DV, Asiedu MN, Mandell EK, Moy JK, Blute VM, et al. BDNF regulates atypical PKC at spinal synapses to initiate and maintain a centralized chronic pain state. *Mol Pain* 2013; 9: 12.
- Melemedjian OK, Tillu DV, Moy JK, Asiedu MN, Mandell EK, Ghosh S, et al. Local translation and retrograde axonal transport of CREB regulates IL-6-induced nociceptive plasticity. *Mol Pain* 2014; 10: 45.
- Merighi A, Salio C, Ghirri A, Lossi L, Ferrini F, Betelli C, et al. BDNF as a pain modulator. *Prog Neurobiol* 2008; 85: 297–317.
- Metzger D, Chambon P. Site- and time-specific gene targeting in the mouse. *Methods* 2001; 24: 71–80.
- Minett MS, Eijkelkamp N, Wood JN. Significant determinants of mouse pain behaviour. *PLoS One* 2014; 9: e104458.
- Minett MS, Nassar MA, Clark AK, Passmore G, Dickenson AH, Wang F, et al. Distinct Nav1.7-dependent pain sensations require different sets of sensory and sympathetic neurons. *Nat Commun* 2012; 3: 791.
- Minett MS, Pereira V, Sikandar S, Matsuyama A, Lolognier S, Konstantinos A, et al. Endogenous opioids contribute to insensitivity to pain in humans and mice lacking sodium channel Nav1.7. *Nat Commun* 2015; 6: 8967.
- Neumann E, Brandenburger T, Santana-Varela S, Deenen R, Kohrer K, Bauer I, et al. MicroRNA-1-associated effects of neuron-specific brain-derived neurotrophic factor gene deletion in dorsal root ganglia. *Mol Cell Neurosci* 2016; 75: 36–43.
- Nijs J, Meeus M, Versijpt J, Moens M, Bos I, Knaepen K, et al. Brain-derived neurotrophic factor as a driving force behind neuroplasticity in neuropathic and central sensitization pain: a new therapeutic target? *Expert Opin Ther Targets* 2015; 19: 565–76.
- Obata K, Noguchi K. BDNF in sensory neurons and chronic pain. *Neurosci Res* 2006; 55: 1–10.
- Obata K, Yamanaka H, Kobayashi K, Dai Y, Mizushima T, Katsura H, et al. The effect of site and type of nerve injury on the expression of brain-derived neurotrophic factor in the dorsal root ganglion and on neuropathic pain behavior. *Neuroscience* 2006; 137: 961–70.
- O'Neill J, Sikandar S, McMahon SB, Dickenson AH. Human psychophysics and rodent spinal neurones exhibit peripheral and central mechanisms of inflammatory pain in the UVB and UVB heat rekindling models. *J Physiol* 2015; 593: 4029–42.
- Parada CA, Yeh JJ, Reichling DB, Levine JD. Transient attenuation of protein kinase Cepsilon can terminate a chronic hyperalgesic state in the rat. *Neuroscience* 2003; 120: 219–26.
- Pezet S, McMahon SB. Neurotrophins: mediators and modulators of pain. *Annu Rev Neurosci* 2006; 29: 507–38.
- Randall LO, Selitto JJ. A method for measurement of analgesic activity on inflamed tissue. *Arch Int Pharmacodyn Ther* 1957; 111: 409–19.
- Ravenall SJ, Gavazzi I, Wood JN, Akopian AN. A peripheral nervous system actin-binding protein regulates neurite outgrowth. *Eur J Neurosci* 2002; 15: 281–90.
- Reichling DB, Levine JD. Critical role of nociceptor plasticity in chronic pain. *Trends Neurosci* 2009; 32: 611–18.
- Rios M, Fan G, Fekete C, Kelly J, Bates B, Kuehn R, et al. Conditional deletion of brain-derived neurotrophic factor in the postnatal brain leads to obesity and hyperactivity. *Mol Endocrinol* 2001; 15: 1748–57.
- Shields SD, Ahn HS, Yang Y, Han C, Seal RP, Wood JN, et al. Nav1.8 expression is not restricted to nociceptors in mouse peripheral nervous system. *Pain* 2012; 153: 2017–30.
- Sikandar S, Ronga I, Iannetti GD, Dickenson AH. Neural coding of nociceptive stimuli from rat spinal neurones to human perception. *Pain* 2013; 154: 1263–73.
- Slack SE, Pezet S, McMahon SB, Thompson SW, Malcangio M. Brain-derived neurotrophic factor induces NMDA receptor subunit one phosphorylation via ERK and PKC in the rat spinal cord. *Eur J Neurosci* 2004; 20: 1769–78.
- Sluka KA, Price MP, Breese NM, Stucky CL, Wemmie JA, Welsh MJ. Chronic hyperalgesia induced by repeated acid injections in muscle is abolished by the loss of ASIC3, but not ASIC1. *Pain* 2003; 106: 229–39.
- Sorge RE, LaCroix-Fralish ML, Tuttle AH, Sotocinal SG, Austin JS, Ritchie J, et al. Spinal cord Toll-like receptor 4 mediates inflammatory and neuropathic hypersensitivity in male but not female mice. *J Neurosci* 2011; 31: 15450–4.
- Sorge RE, Mapplebeck JC, Rosen S, Beggs S, Taves S, Alexander JK, et al. Different immune cells mediate mechanical pain hypersensitivity in male and female mice. *Nat Neurosci* 2015; 18: 1081–3.
- Thompson SW, Bennett DL, Kerr BJ, Bradbury EJ, McMahon SB. Brain-derived neurotrophic factor is an endogenous modulator of nociceptive responses in the spinal cord. *Proc Natl Acad Sci USA* 1999; 96: 7714–18.
- Tjolsen A, Berge OG, Hunskaar S, Rosland JH, Hole K. The formalin test: an evaluation of the method. *Pain* 1992; 51: 5–17.
- Wetmore C, Olson L. Neuronal and nonneuronal expression of neurotrophins and their receptors in sensory and sympathetic ganglia suggest new intercellular trophic interactions. *J Comp Neurol* 1995; 353: 143–59.
- Woolfe G, Macdonald AD. The evaluation of the analgesic action of pethidine hydrochloride (Demerol). *J Pharmacol Exp Ther* 1944; 80: 300–7.
- Zhao J, Seereeram A, Nassar MA, Levato A, Pezet S, Hathaway G, et al. Nociceptor-derived brain-derived neurotrophic factor regulates acute and inflammatory but not neuropathic pain. *Mol Cell Neurosci* 2006; 31: 539–48.
- Zhao J, Yuan G, Cendan CM, Nassar MA, Lagerstrom MC, Kullander K, et al. Nociceptor-expressed ephrin-B2 regulates inflammatory and neuropathic pain. *Mol Pain* 2010; 6: 77.
- Zhuo M, Wu G, Wu LJ. Neuronal and microglial mechanisms of neuropathic pain. *Mol Brain* 2011; 4: 31.
- Zurborg S, Piszczek A, Martínez C, Hublitz P, Al Banchaabouchi M, Moreira P et al. Generation and characterization of an Advillin-Cre driver mouse line. *Mol Pain* 2011; 7: 66.