

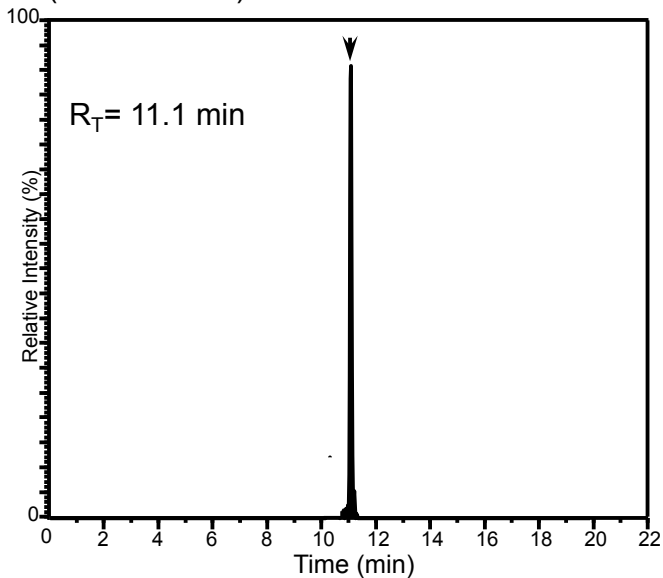
Supplementary data, Figure 1: Integrity of the lipid mediators was assessed using characteristic UV chromophore by spectrophotometry and retention along characteristic MS-MS fragmentation in LC-MS-MS.

AT-RvD1

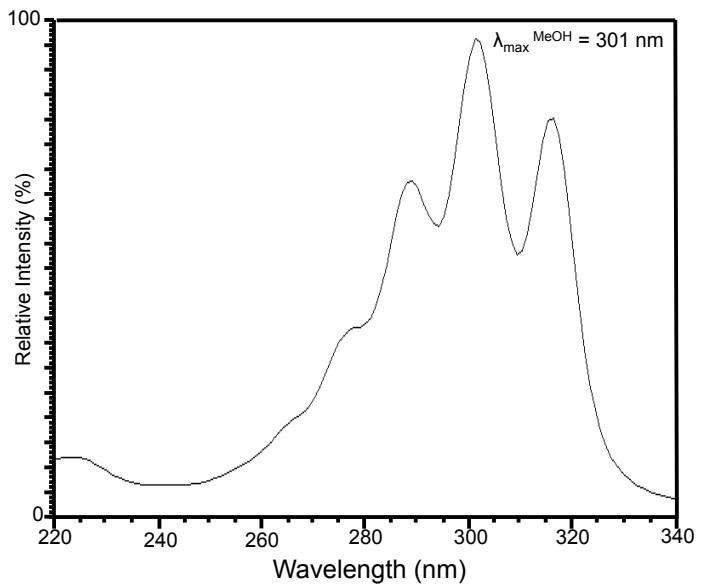
>99% purity, <1% double bond isomers

180 pg/aliquot

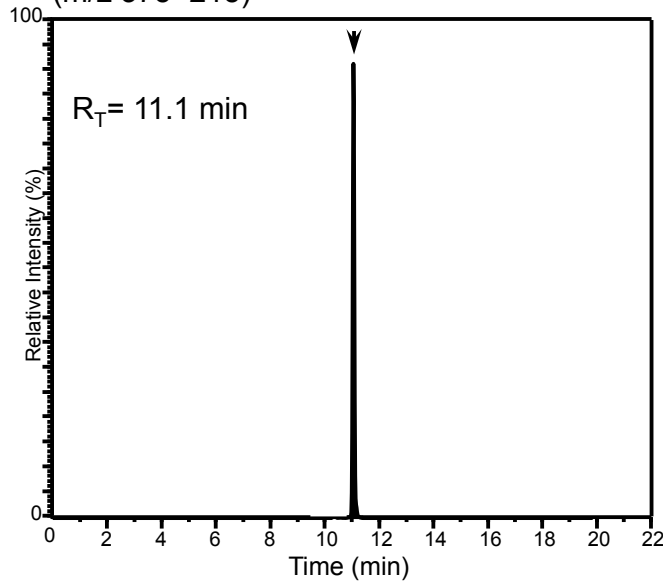
MRM chromatogram of AT-RvD1 standard (m/z 375>215)



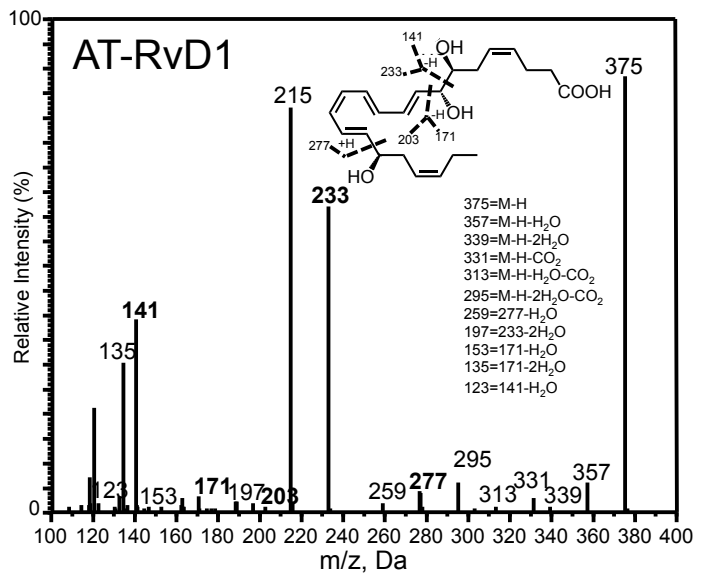
UV Chromophore of AT-RvD1 in methanol



MRM chromatogram of AT-RvD1 (m/z 375>215)



MS-MS Fragmentation spectrum of AT-RvD1



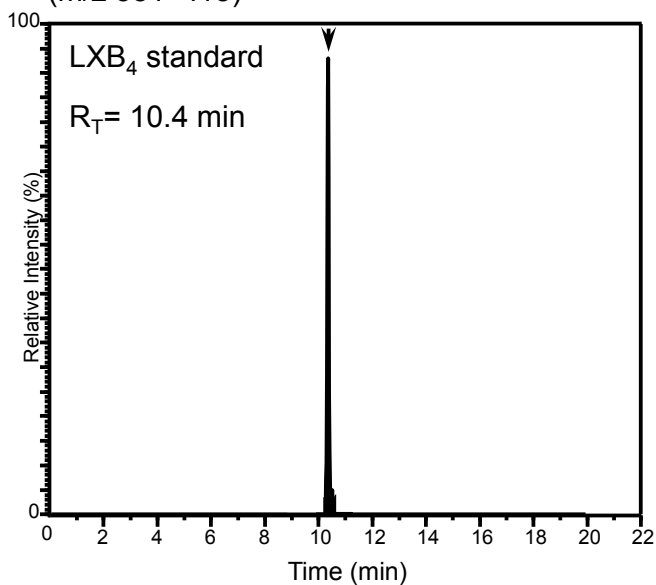
Supplementary data, Figure 1

LXB₄

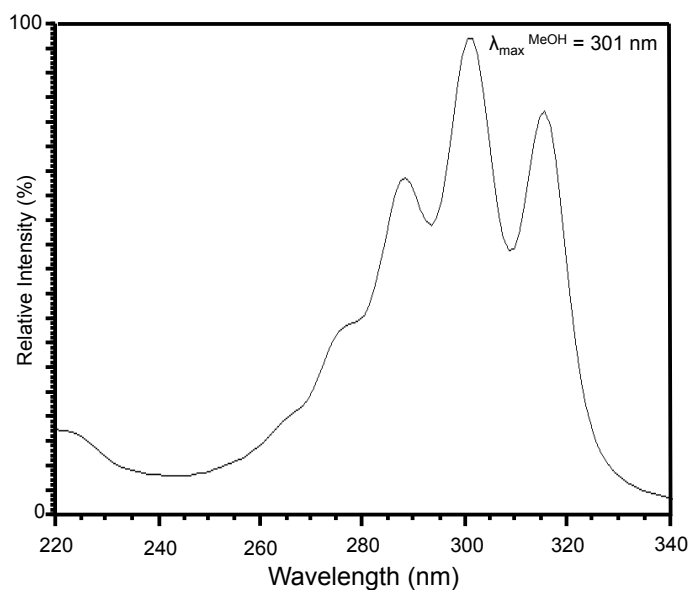
>99% purity, <1% double bond isomers

30 pg/aliquot

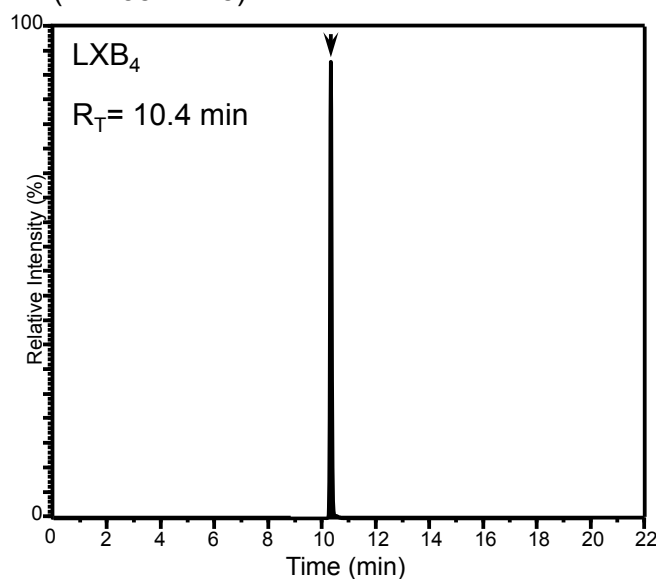
MRM chromatogram of LXB₄ standard
(m/z 351>115)



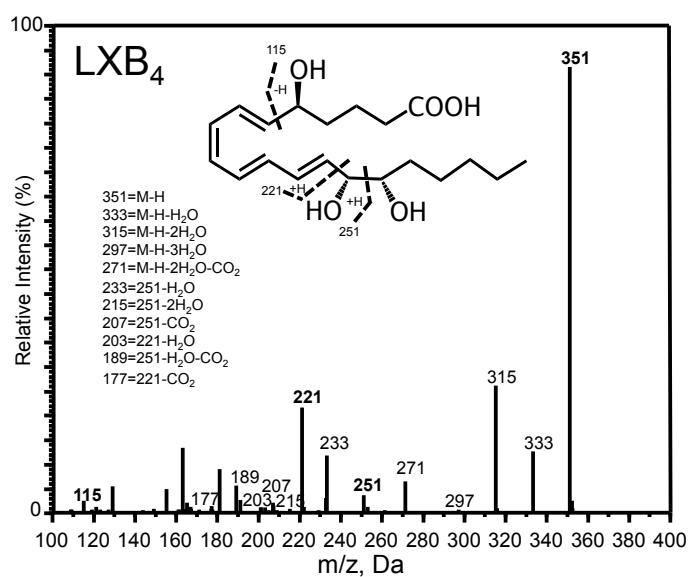
UV Chromophore of LXB₄ in methanol



MRM chromatogram of LXB₄
(m/z 351>115)



MS-MS Fragmentation spectrum of LXB₄



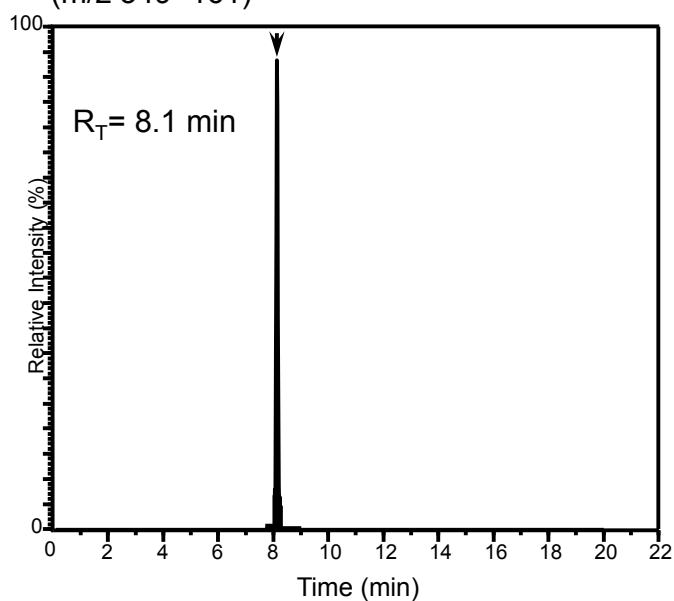
Supplementary data, Figure 1

RvE1

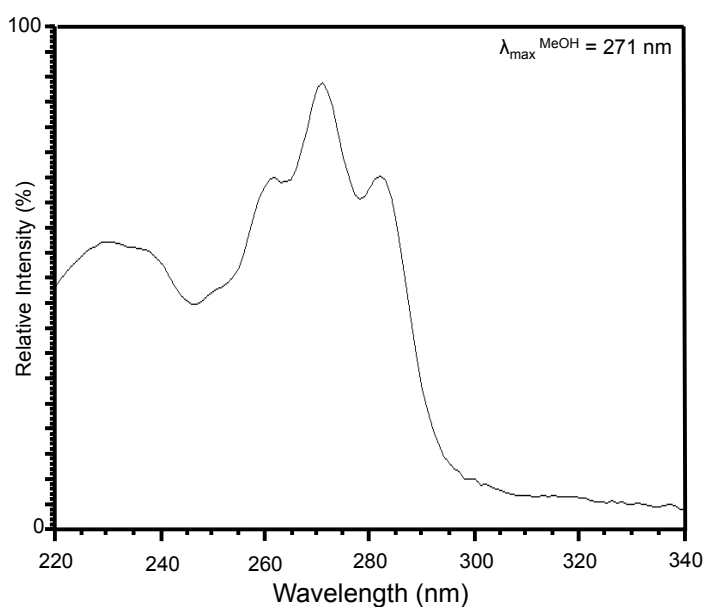
>98% purity, <2% double bond isomers

6 pg/aliquot

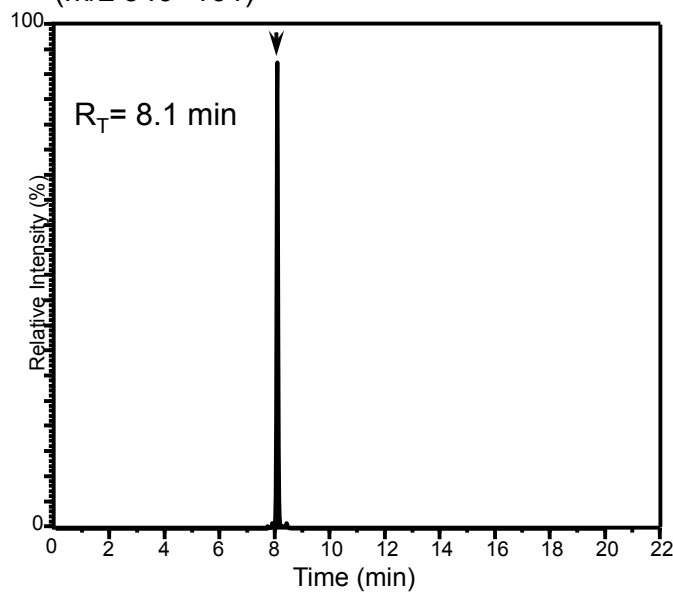
MRM chromatogram of RvE1 standard
(m/z 349>161)



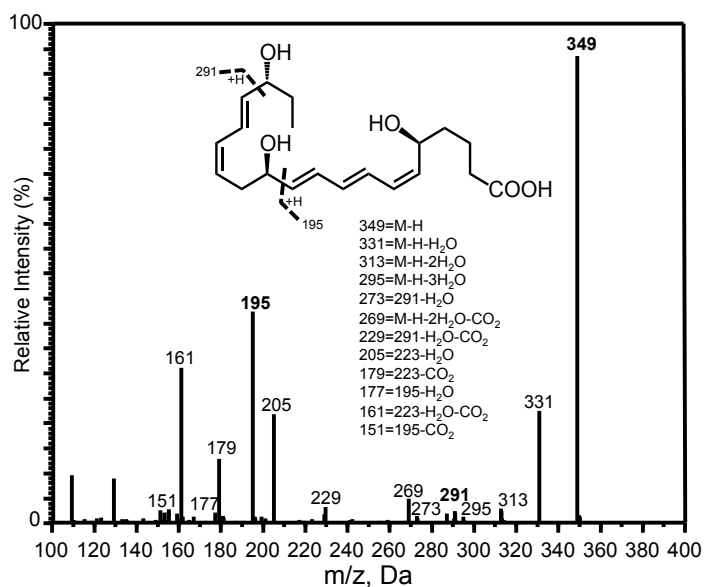
UV Chromophore of RvE1 in methanol



MRM chromatogram of RvE1
(m/z 349>161)



MS-MS Fragmentation spectrum of RvE1



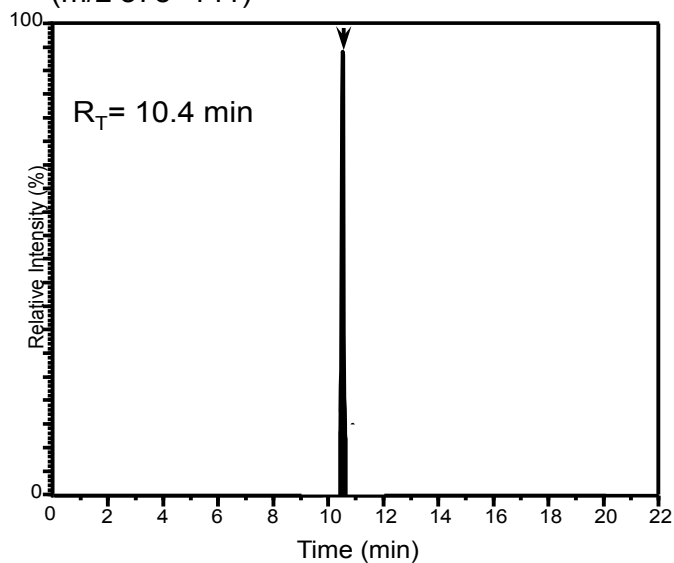
Supplementary data, Figure 1

RvD2

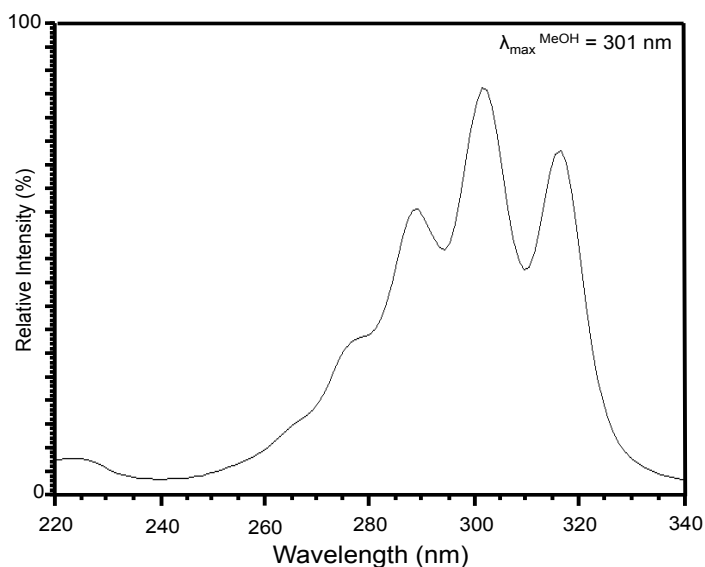
>98% purity, <2% double bond isomers

25.5 pg/aliquot

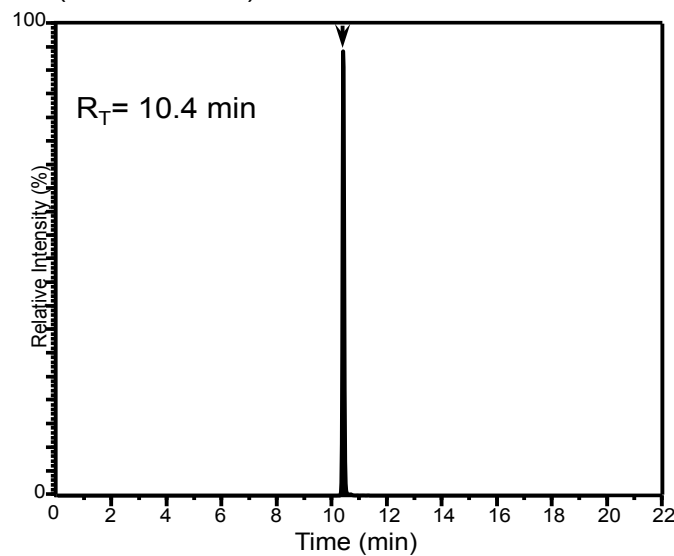
MRM chromatogram of RvD2 standard
(m/z 375>141)



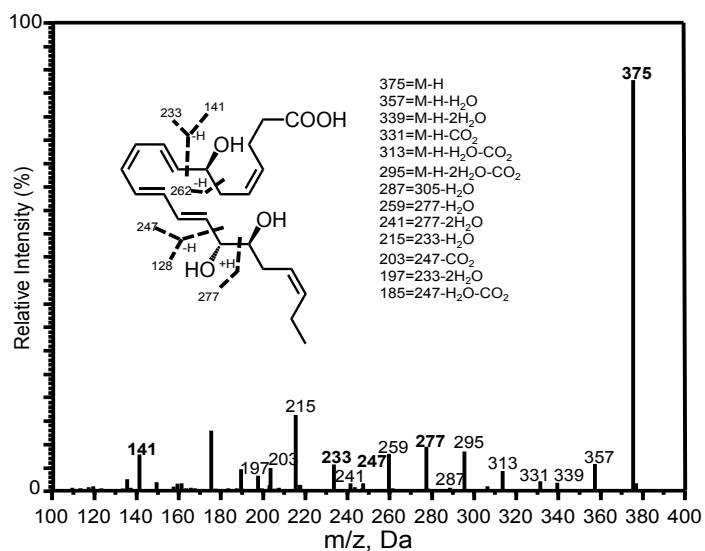
UV Chromophore of RvD2 in methanol



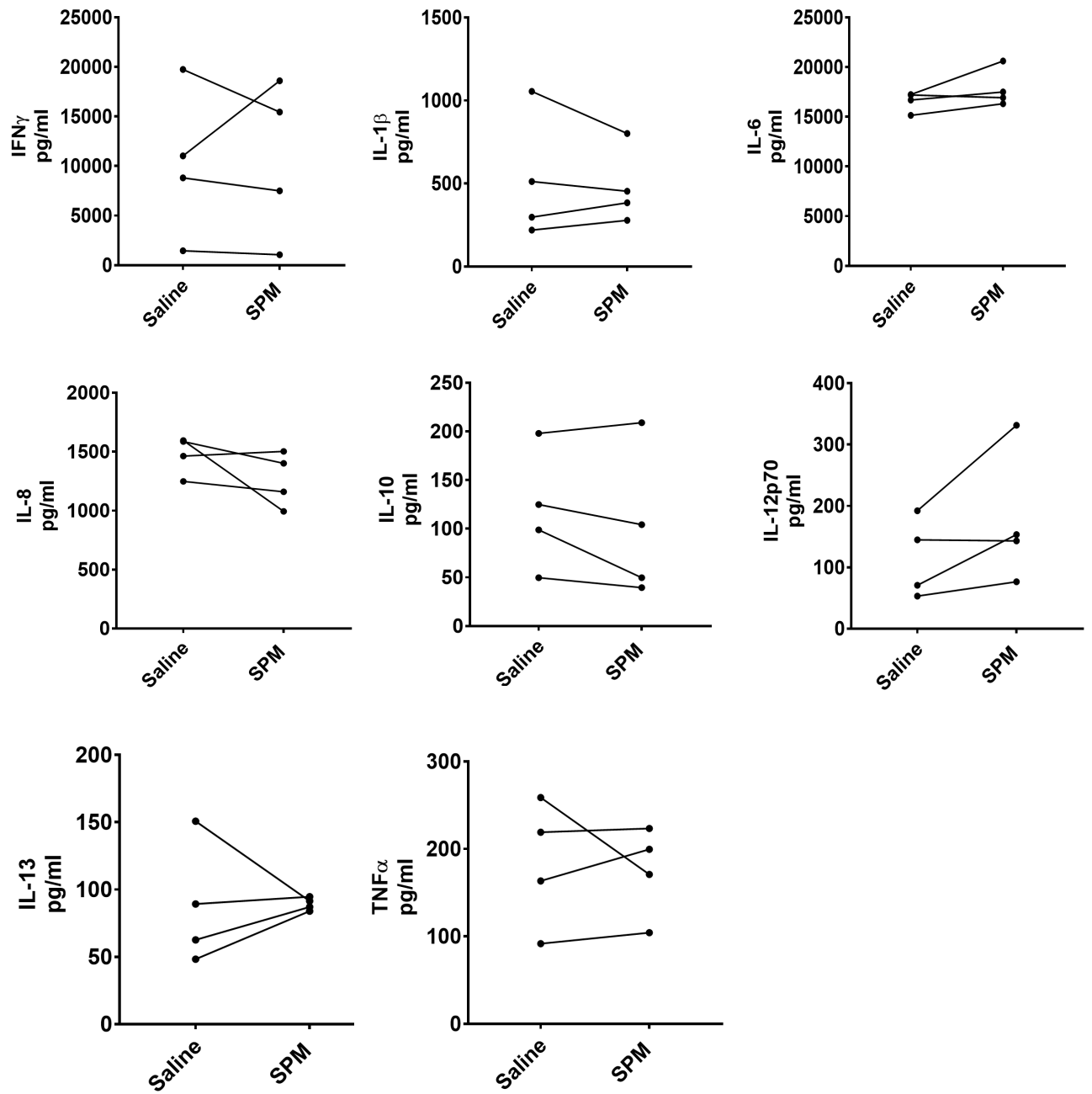
MRM chromatogram of RvD2
(m/z 375>141)



MS-MS Fragmentation spectrum of RvD2

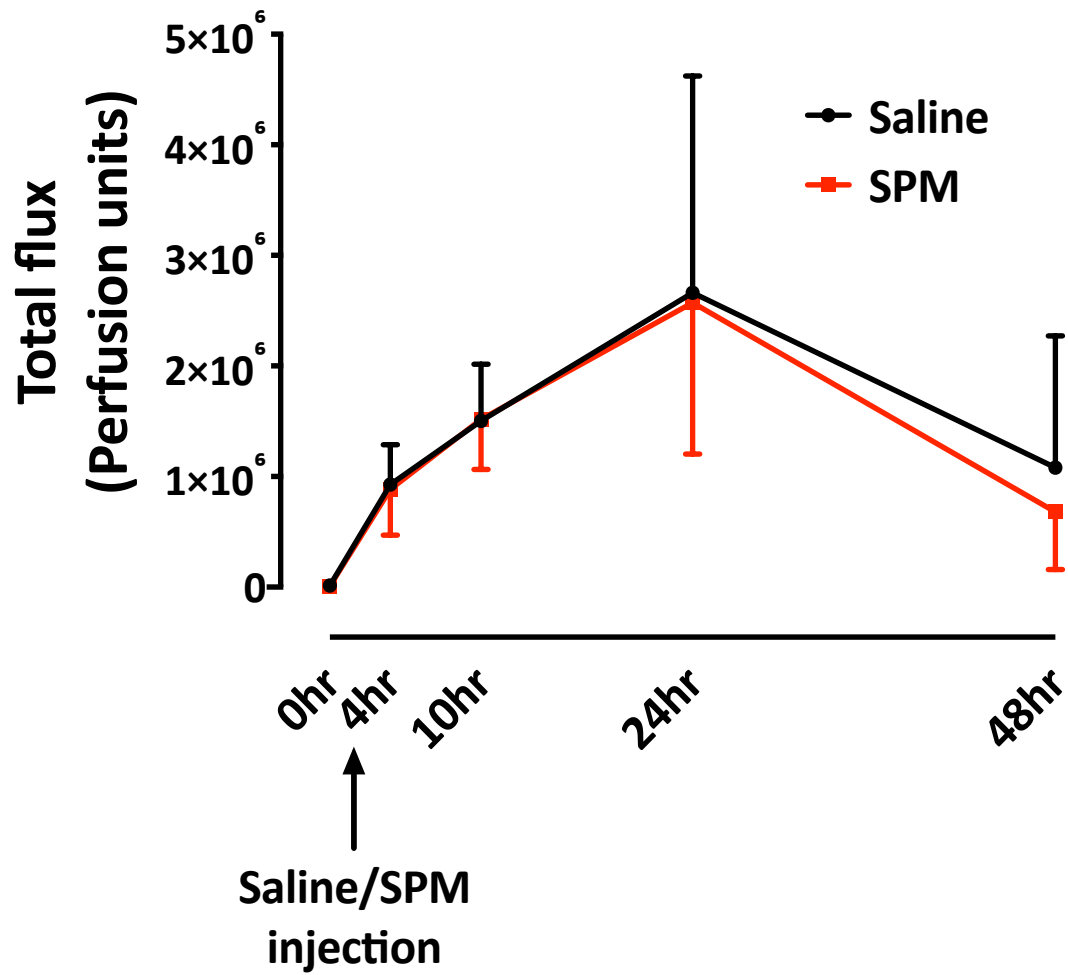


Supplementary data, Figure 2



Supplementary data, Figure 2. Actions of SPMs on inflammatory cytokine/chemokine levels in a model of dermal UVKEc-triggered acute inflammation.

Supplementary data, Figure 3



Supplementary data, Figure 3. Effects of SPMs on microvascular hyper reactivity as determined by laser Doppler.