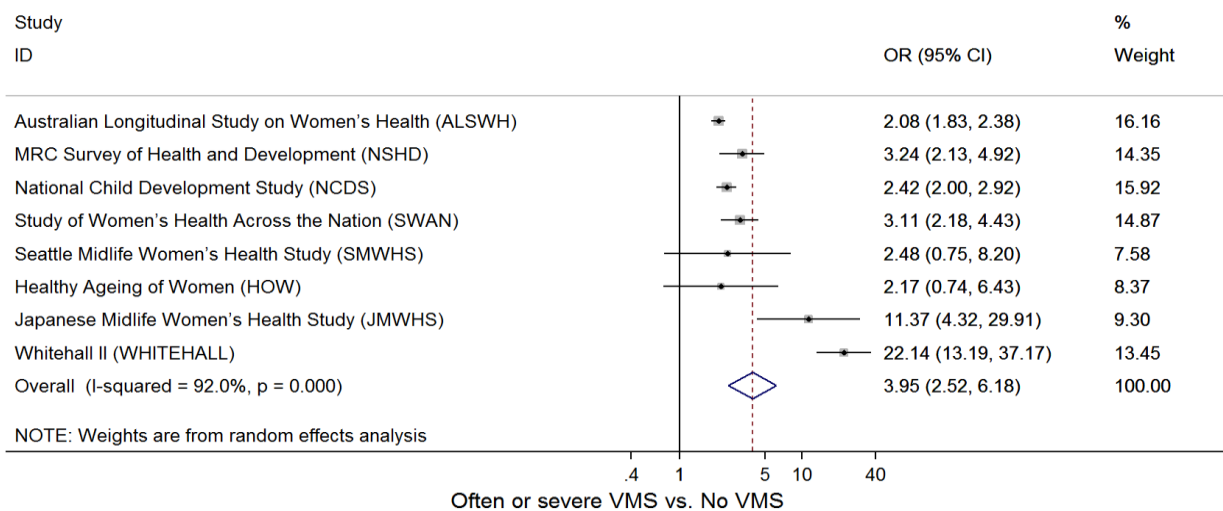
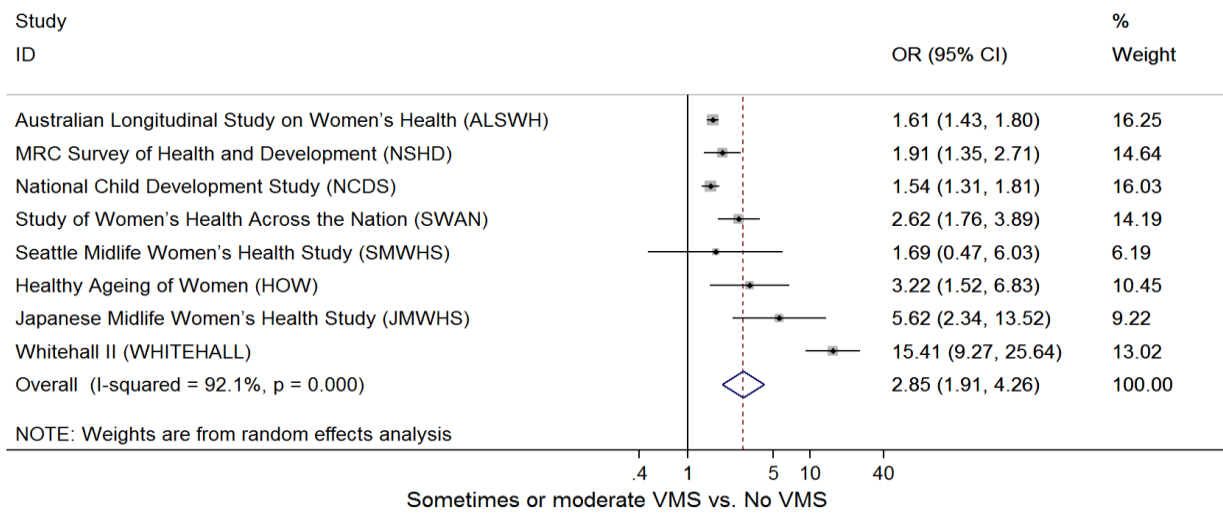
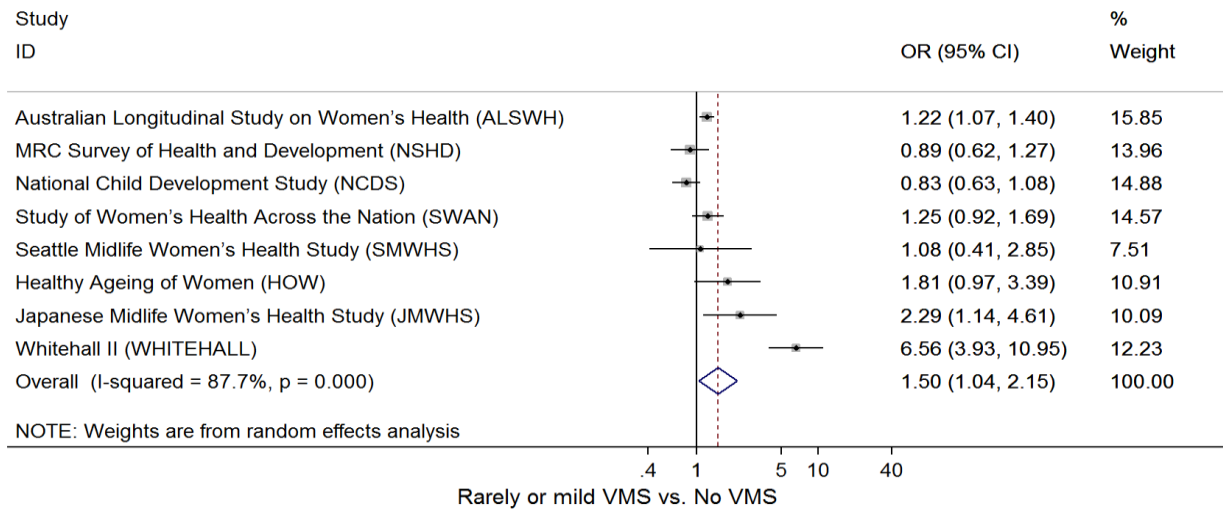


Supplementary materials

Supplemental Table 1 Baseline characteristics of study sample included and excluded for the prospective analysis

	Included (n=10,692)	Excluded (n=4,953)	P-value
Birth year			
<1940	6.5	2.1	<0.0001
1940-1949	66.2	71.2	
1950-1959	27.4	26.7	
Race/ethnicity			
Caucasian- Australian/New Zealander	45.5	65.9	<0.0001
Caucasian- European	32.3	22.3	
Caucasian- American	9.6	3.3	
Japanese	2.3	0.1	
African American/Black	5.1	1.3	
Other	5.3	7.1	
Education level			
≤10 years	42.1	47.4	<0.0001
11-12 years	17.6	17.0	
>12 years	40.3	35.7	
Body mass index			
Normal weight (<25 kg/m ²)	49.1	45.9	0.0003
Overweight (25-29.9 kg/m ²)	30.3	31.1	
Obese (≥30 kg/m ²)	20.6	22.9	
Smoking status			
Never	55.2	53.8	0.0012
Past smoker	28.5	27.5	
Current smoker	16.3	18.7	
Menopausal status			
Hysterectomy/oophorectomy	18.6	25.1	<0.0001
Unknown due to hormone use	14.6	16.6	
Premenopause	20.3	20.2	
Perimenopause	30.1	24.2	
Natural postmenopause	16.3	13.9	
Current use of menopausal hormone therapy			
No	79.7	75.9	<0.0001
Yes	20.3	24.1	
Frequency/severity of sleep difficulties			
Never	40.1	34.9	<0.0001
Rarely/mild	23.1	19.1	
Sometimes/moderate	24.0	29.8	
Often/severe	12.8	16.2	
Frequency/severity of vasomotor symptoms			
Never	44.9	42.2	<0.0001
Rarely/mild	20.4	17.1	
Sometimes/moderate	20.7	24.7	
Often/severe	14.0	16.1	
Frequency/severity of depressed mood			
Never	51.8	51.7	0.0009
Rarely/mild	25.2	23.1	
Sometimes/moderate	16.6	18.8	
Often/severe	6.4	6.4	



Supplemental Figure 1 Forest plot of study-specific effect estimates of the cross-sectional association between vasomotor symptoms and depressed mood at baseline. Odds ratios (ORs) were presented on a log scale. Effect estimates were fully adjusted for menopausal status, concurrent use of menopausal hormone therapy, race/ethnicity, education, smoking status, and BMI. Data for SWAN were additionally adjusted for study site.