

ORIGINAL RESEARCH

Dietary choices are influenced by genotype, mating status, and sex in *Drosophila melanogaster*

M. Florencia Camus  | Chun-Cheng Huang | Max Reuter  | Kevin Fowler 

Research Department of Genetics, Evolution and Environment, University College London, London, UK

Correspondence

M. Florencia Camus, Research Department of Genetics, Evolution and Environment, University College London, London, UK.
Email: f.camus@ucl.ac.uk

Funding information

This study was funded by a Marie Skłodowska-Curie Research Fellowship (#708362) to MFC.

Abstract

Mating causes many changes in physiology, behavior, and gene expression in a wide range of organisms. These changes are predicted to be sex specific, influenced by the divergent reproductive roles of the sexes. In female insects, mating is associated with an increase in egg production which requires high levels of nutritional input with direct consequences for the physiological needs of individual females. Consequently, females alter their nutritional acquisition in line with the physiological demands imposed by mating. Although much is known about the female mating-induced nutritional response, far less is known about changes in males. In addition, it is unknown whether variation between genotypes translates into variation in dietary behavioral responses. Here we examine mating-induced shifts in male and female dietary preferences across genotypes of *Drosophila melanogaster*. We find sex- and genotype-specific effects on both the quantity and quality of the chosen diet. These results contribute to our understanding of sex-specific metabolism and reveal genotypic variation that influences responses to physiological demands.

KEYWORDS

dietary choices, *Drosophila melanogaster*, nutrition, sex differences

1 | INTRODUCTION

Many species exhibit multiple changes in physiology, behavior, and gene expression following mating. Responses to mating are predicted to be sex specific, and these differences can be attributed to the divergent reproductive roles of the sexes. For example, mating induces significant changes in female insects including: elevated egg-laying rate, increased food consumption, reduced immunity, and reduced receptivity to courting males (Chapman, Liddle, Kalb, Wolfner, & Partridge, 1995; Liu & Kubli, 2003; Rolff & Siva-Jothy, 2002; Sgrò, Chapman, & Partridge, 1998). Less is known about the responses to mating in males, although they are predicted to primarily involve the replenishment of sperm and seminal fluid storage (Siro, Buehner, Fiumera, & Wolfner, 2009). Several studies using *Drosophila melanogaster* have aimed to uncover the gene products

that respond to mating, although these studies have examined males and females separately (Dalton et al., 2010; Ellis & Carney, 2010; Innocenti & Morrow, 2009; Lawniczak & Begun, 2004).

More recently, sex-specific transcriptomic analysis in the seed beetle *Callosobruchus maculatus* has shed some light on gene expression affected by mating; with females showing more genes responding to mating than males (~2000 vs. ~300) (Immonen, Sayadi, Bayram, & Arnqvist, 2017). Many of the genes that responded to mating were found to be involved in metabolic pathways, suggesting sex-specific shifts in metabolic requirements as a consequence of mating (Immonen et al., 2017). A metabolic shift can phenotypically manifest as a switch in requirement of certain macronutrients to meet the new nutritional demands of the organism. For example, several studies have examined dietary choices in flies, concluding that flies can actively make food choices according to their internal state

This is an open access article under the terms of the Creative Commons Attribution License, which permits use, distribution and reproduction in any medium, provided the original work is properly cited.

© 2018 The Authors. *Ecology and Evolution* published by John Wiley & Sons Ltd.

in a sex-specific manner (Corrales-Carvajal, Faisal, & Ribeiro, 2016; Ribeiro & Dickson, 2010; Vargas, Luo, Yamaguchi, & Kapahi, 2010). Moreover, nutritional choices have been found to differ depending on the mating status of females. While virgin females mostly fed on carbohydrate-based diets, mated females not only elevated their overall amount of food consumed (food quantity), but increased the concentration of protein ingested (food quality; Corrales-Carvajal et al., 2016). In *Drosophila* females, egg production (reproductive output) has been directly linked to the nutritional state of female flies, with flies having a greater reproductive output on diets containing higher protein concentrations (Piper et al., 2014; Simmons & Bradley, 1997; Terashima & Bownes, 2004). These results allude to both a metabolic and behavioral shift for diet preference in response to a change in reproductive requirements (Kubli, 2010). However, most studies that have examined dietary responses to mating have only used one sex (females), and thus, we do not know whether males go through a similar physiological change (Corrales-Carvajal et al., 2016; Ribeiro & Dickson, 2010; Vargas et al., 2010).

While there is evidence that the sexes differ in their dietary requirements to maximize their fitness (Jensen, McClure, Priest, & Hunt, 2015; Maklakov et al., 2008), it is currently unknown whether genetic effects on the metabolome translates into variation in behavioral responses in general, and whether the genotype of an individual will have an effect on nutritional changes induced by mating, in particular. Recently, significant genetic variation has been found in dietary requirements and dietary choices for males and female *Drosophila* (Camus, Fowler, Piper, & Reuter, 2017; Reddiex, Gosden, Bonduriansky, & Chenoweth, 2013). Together, these results suggest that genotypes vary in the rate and efficiency with which they acquire and process nutrients, and ultimately in the conversion of these nutrients into reproductive output.

Here, we ask whether males and females change dietary behavior in response to mating and if mating-induced dietary shifts are genotype dependent. We use cytogenetic cloning techniques, and measure responses in dietary preference to mating across six genotypes in both sexes. Our results show sex- and genotype-specific responses to mating. Females show a significant response in both the quantity and quality of food consumed; preferring to consume a diet with higher protein concentration following mating. In addition, we find genotype-specific responses and link these to previously obtained fitness measurements. Males on the other hand do not show a general dietary trend following mating, although we do find complex interactions between the mating response and the genotype of the individual fly. Overall these results contribute to our understanding of sex-specific metabolism and flexible responses to physiological requirements.

2 | MATERIALS AND METHODS

2.1 | Fly stock and maintenance

We used the *D. melanogaster* laboratory population LH_M for our experiments. This has been sustained as a large outbred population for

over 400 nonoverlapping generations (Chippindale, Gibson, & Rice, 2001; Rice, 1996), maintained on a strict 14-day regime, with constant densities at larval (~175 larvae per vial) and adult (56 vials of 16 male and 16 females) stages. All LH_M flies were reared at 25°C, under a 12-hr:12-hr light:dark regime, on cornmeal–molasses–yeast–agar food medium.

We used hemiclinal analysis to sample six haploid genomes, consisting of chromosomes X, II and III (the fourth dot chromosome is ignored), from the population. Haploid genomes are maintained without recombination and expressed in males and females. Experimental flies share a genomic haplotype (herein hemiclone), complemented by chromosomes randomly sourced from the base population (Chippindale et al., 2001). Given both target haploid genomes and complementing genomes are both sourced from the LH_M population, each hemiclinal fly is considered outbred. The experimental lines were not picked at random. The chosen hemiclone lines were found to have diverging levels of female productivity in a previous study, indicative of high levels of variance in female fitness in the LH_M population (Camus et al., 2017). We picked two lines that had overall the highest and lowest productivity (M40 and M55 respectively), whereas the other four lines were picked to represent an even spread between the two extremes (M39, M8, M91, M52).

2.2 | Synthetic diet

We used a modified liquid version of a synthetic diet (Piper et al., 2014), prepared entirely from synthetic components (recipes are in Tables A1–A3 in Appendix S1). Previous studies have used diets based on natural components, typically live or killed yeast as the protein source and sugar as the carbon source, which do not allow precise manipulation of nutrients and are confounded by responses to other dietary components (Piper & Partridge, 2007). We synthesized two diets, protein and carbohydrate, both of which were presented to the flies during the experiment in separate capillary tubes. Each diet contained all nutritional components (vitamins, minerals, lipids) at equal concentration, with the protein diet containing amino acids and the carbohydrate diet containing sucrose. Preliminary experiments established that flies would not eat purified amino acids with the vitamin/mineral/lipid buffer, so we diluted our protein solution with 20% of a suspension of dried yeast extract, made at the same protein concentration as the synthetic solution. Given that yeast extract also contains sugars, the final protein diet then included 4% carbohydrate. We do not take into account the fractional amount of carbohydrate in our protein diet. This is mainly because yeast extract is composed of many types of carbohydrates, all of which are metabolized differently using different pathways. For this reason, we would rather have a more conservative approach and exclude carbohydrate measures. We also note that most dietary preference work in insects does not use a holidic diet, but rather yeast extract as the protein source (42% protein; Corrales-Carvajal et al., 2016; Reddiex et al., 2013). Our diet thus provides an important step in the right direction and future work regarding the holidic medium should aim to identify the sensory cue that is missing from the protein source.

2.3 | Dietary preference assay

Males and females were assayed separately. For each sex, the experiment was run over two identical blocks, with each block containing all experimental genotypes. Hemiclone flies from each sex and genotype were collected as virgins using CO₂ anesthesia. Triplets of virgins were placed in individual vials containing culture medium (molasses–yeast–agar) with no added live yeast. We use triplets of flies to minimize between-vial variance (Camus et al., 2017). Twenty vials of triplets were collected for each sex and genotype, with 10 vials allocated to the “virgin” treatment and 10 vials to the “mated” treatment. Flies in the “mated” treatment required flies of the opposite sex to mate with. For this we used, LH_M males and females which were reared in identical conditions to the hemiclone flies and collected as virgins in triplets. All flies were aged for 4 days in order for them to become sexually mature. Then three virgin LH_M flies of the opposite sex to the hemiclone were introduced to the vial with the three hemiclones of the “mated” treatment. This hexet of flies were left for 5 hours to mate, with all hemiclones subsequently being transferred to new vials containing an 0.8% agar–water mixture. Virgin flies were not perturbed during this period. We are confident that all of the focal individuals mated at least once. First, before this study we performed a trial to find the time required for mating to occur. It showed that all test flies mated within 5 hr. Second, we presented flies of the mated treatment with equal numbers of the opposite sex flies to ensure that there was no competition for mating. Finally, experimental flies were kept as virgin for a period of 4 days, which maximizes the chance of flies mating in a short period of time. Agar–water vials provide water for the flies, but have no nutritional value. Flies were kept in a controlled temperature room (25°C), 12L:12D light cycle and high relative humidity >80%.

In accordance with previous literature using this methodology (Camus et al., 2017; Reddix et al., 2013), flies were kept in agar–water vials overnight and then supplied with two 5- μ l microcapillary tubes (ringcaps®, Hirschmann); one containing the protein solution

and the other the carbohydrate solution. Capillary tubes were replaced daily, and food consumption for each fly trio was recorded for a period of 3 days. As a control, the rate of evaporation for all diet treatments was measured in six vials that contained the two solution-bearing capillary tubes but no flies and placed randomly in the controlled temperature room. Their average evaporation per day was used to correct diet consumption for evaporation.

2.4 | Statistical analyses

Given that experiments were performed separately for males and females, we analyzed separately for each sex. We used trigonometry to distinguish the quantity and quality of food consumed by flies and their changes with mating status (Figure 1). To quantify food consumed, we calculated the length of a vector starting from the origin (0,0) to the point on the carbohydrate–protein plane describing the consumption measured for a replicate trio of individuals. To quantify the quality of the food consumed, we calculated the angle (α) created between each consumption vector and the x-axis. The value of the angle gives an indication of protein or carbohydrate preference. For instance, if $\alpha < 45^\circ$, then flies prefer more protein in their diets, whereas $\alpha > 45^\circ$ would indicate a carbohydrate dietary preference (Figure 1).

To determine whether male and female dietary choices depend on their mating status and genotype, we subjected vector lengths and angles to a multivariate analysis of variance (MANOVA). We first removed the effect of “experimental block” by running a preliminary model, with length and angle of vector as response variables and block as a fixed effect. We then extracted the residuals of this model and used them as response variables for the main analysis. The main model had (residual) length and angle of the vectors as response variables, with mating status and genotype as fixed effects. Our two-step model approach circumvents the fact that it is not possible to model a multivariate analysis of variance with random effects without using Bayesian statistics. Using a two-step model approach,

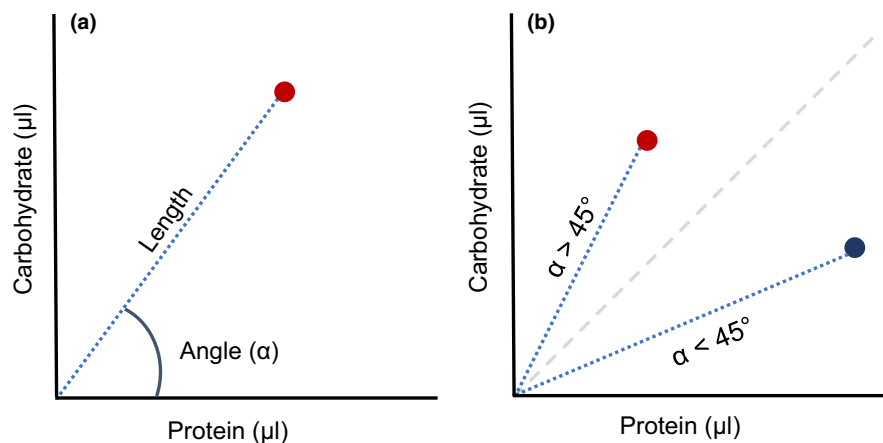


FIGURE 1 (a) Illustrative representation of food consumed in terms of quantity (length of a vector to a given data point—red dot) and quality (angle of the vector). (b) Dietary shifts represented by the angle (α) of the vector. Values of $\alpha < 45^\circ$ indicate a preference for a higher concentration of protein (blue dot), $\alpha > 45^\circ$ a preference for higher concentration of carbohydrate (red dot) in the diet

we were able to first remove the random effect of “block” from our data in a preliminary model and then measure the effects of “genotype” and “mating status” on the residuals of that preliminary model.

Given that we picked genotypes based on female fitness rather than sampling them randomly from the population, we included genotype as a fixed effect. We followed the MANOVA with separate univariate analyses of variance (ANOVA) for each response variable. After the univariate analyses, we performed Tukey’s post hoc tests to identify genotypes that were significantly different from each other in their diet quantity and quality. All analyses were performed in R version 3.3.2 (Team, 2016).

3 | RESULTS

For females, we found a significant effect of mating status on dietary choices in the overall multivariate model (Pillai’s trace = 0.73657, approx. $F = 313.160$, $p < .001$, Table 1). Our data also revealed significant genetic differences on dietary choices in the overall multivariate model (Pillai’s trace = 0.41642, approx. $F = 11.833$, $p < .001$, Table 1) and genetic variation for dietary shifts induced by mating (genotype \times status: Pillai’s trace = 0.21154, approx. $F = 5.323$, $p < .001$, Table 1). Univariate analyses revealed that across genotypes, mating increased the quantity of food consumed, and all genotypes changed their dietary quality to consume higher concentrations of protein (length: $F = 618.8995$, $p < .001$, angle: $F = 29.4489$, $p < .001$, Figures 2 and 3, Table 1; Figure A1 in Appendix S1). Furthermore, via post hoc analyses, we were able to dissect this genotypic response. For instance, genotype M40 showed the greatest response to mating by consuming more food than all the other lines and having a significantly greater protein switch than the other genotypes (Figures 2 and 3; Tables A4 and A5 in Appendix S1).

For males, we did not observe a significant mating response (Pillai’s trace = 0.012007, approx. $F = 1.1788$, $p = .31$, Table 1) in the overall multivariate model. We did find significant differences in consumption between genotypes (Pillai’s trace = 0.231438, approx. $F = 5.1036$, $p < .001$, Table 1) and mating status-by-genotype interaction (Pillai’s trace = 0.117975, approx. $F = 2.4447$, $p = .008$, Figure 2, Table 1). Univariate analyses revealed that the significance is driven by diet consumption (length of vector) rather than dietary choices (angle of vector). While we did not find any significant effects in the univariate model where angle was a response variable, we did find genotype ($F = 29.9769$, $p < .001$) and genotype \times status ($F = 3.0216$, $p = .012$) effects on vector length.

4 | DISCUSSION

We examined the change in dietary preference between virgin and mated flies across both sexes and six genotypes. For females, our findings echo previously obtained results (Corrales-Carvajal et al., 2016; Ribeiro & Dickson, 2010; Vargas et al., 2010). We found a significant mating response, with mated females consuming more

protein and carbohydrate than virgin females. Furthermore, there was a significant shift in the quality of the preferred diet in mated females toward increased protein concentration. We can conclude that the observed dietary switches are associated with the increased reproductive output of female flies. This is because egg production in *Drosophila* has been closely associated with increased consumption of nutrients (specifically, an increase in protein preference) in females, and our results validate these previous findings (Simmons & Bradley, 1997; Terashima & Bownes, 2004). There are many proteins involved in the process of egg production, with yolk proteins having a protagonist role in egg synthesis (Bownes, Lineruth, & Mauchline, 1991; Terashima & Bownes, 2004). For instance, disruption of yolk protein gene synthesis via gene knockouts causes severe consequences to female reproduction leading to sterility in some extreme cases (Minoo & Postlethwait, 1985). We also found significant genotype and genotype-by-mating effects, with both the magnitude and direction of the mating-induced nutritional shift depending on the genotype of the fly (Table 1). For females, we know from previous data collected on these fly lines (Camus et al., 2017) that hemiclinal line M40 shows the highest levels of overall egg production, whereas M55 has the lowest fecundity of all hemiclinal lines. Our current data show that both the quantity and quality of diet are highly divergent between them (Figure 2), with line M40 consuming significantly more food than M55 (Tables A4 and A5 in Appendix S1). Line M40 also shows a larger shift in diet quality compared to M55, choosing to consume a more protein-rich diet following mating. Although we were unable to detect any significant correlations between our current behavioral traits and previously obtained fitness data (Table A6 in Appendix S1) to support our qualitative argument, we note that our genotype sample size is low ($N = 6$). It would be interesting to further examine this relationship between nutrition and fitness by exploring whether the differences in fitness between the lines are due to nutrient sensing pathways or more efficient metabolism (or both) on a larger panel of genotypes. Nevertheless, our results suggest that metabolic pathways of the fly are tightly coupled to the nutrient sensing genes as flies actively make dietary food choices based on their genotype, mating status, and sex. Consequently, this process generates a feedback loop between reproductive needs (reproductive status) and nutrient acquisition (diet preference) in a genotype-dependant manner.

In contrast to females, we did not observe an overall trend in the dietary response to mating for males in either quantity or quality of diet consumed (Figures 1 and 2, Table 1). One potential explanation for the lack of overall mating response is that sperm are “cheap” to make (Trivers, 1972), and so males may not need to consume much food to quickly replenish their sperm/seminal fluid storage. *Drosophila* males are capable of mating multiply and require several consecutive mating opportunities to become sperm deprived (Gromko, Gilbert & Richmond, 1984). Work on cockroaches, however, has shown that there is a nutritional cost to producing sperm, with optimal sperm production found at a protein-to-carbohydrate ratio of 1:2 (Bunning et al., 2015). An alternative explanation of the absence of dietary shifts in males is that as we kept experimental

TABLE 1 Results from multivariate (MANOVA) and univariate (ANOVA) outputs for each sex

	Female					Male						
MANOVA												
	df	Pillai	F	numDF	denDF	Pr(>F)	df	Pillai	F	numDF	denDF	Pr(>F)
Status	1	0.73657	313.160	2	224	<0.001	1	0.012007	1.1788	2	194	0.30984
Genotype	5	0.41642	11.833	10	450	<0.001	5	0.231438	5.1036	10	390	< 0.001
Genotype × status	5	0.21154	5.323	10	450	<0.001	5	0.117975	2.4447	10	390	0.007
Residuals	225						195					
Univariate												
Angle	df	Sum Sq	Mean Sq	F	Pr(>F)	df	Sum Sq	Mean Sq	F	Pr(>F)		
Status	1	3,739.7	3,739.7	294.489	<0.001	1	31.7	31.740	0.8472	0.35848		
Genotype	5	3,907.7	781.5	6.1544	<0.001	5	423.3	84.665	2.2599	0.051		
Genotype × status	5	1,283.6	256.7	2.0216	<0.001	5	342.7	68.548	1.8297	0.10872		
Residuals	225	28,572.4	127.0			195	7,305.5	37.464				
Length	df	Sum Sq	Mean Sq	F	Pr(>F)	df	Sum Sq	Mean Sq	F	Pr(>F)		
Status	1	790.02	790.02	618.8995	<0.001	1	1.563	1.5628	1.7074	0.19286		
Genotype	5	184.98	37.00	28.9830	<0.001	5	44.709	8.9419	9.7690	<0.001		
Genotype × status	5	60.92	12.18	9.5448	<0.001	5	13.829	2.7658	3.0216	0.01191		
Residuals	225	287.21	1.28			195	178.490	0.9153				

Response variables are genotype (hemiclone line) and mating status (virgin/mated).

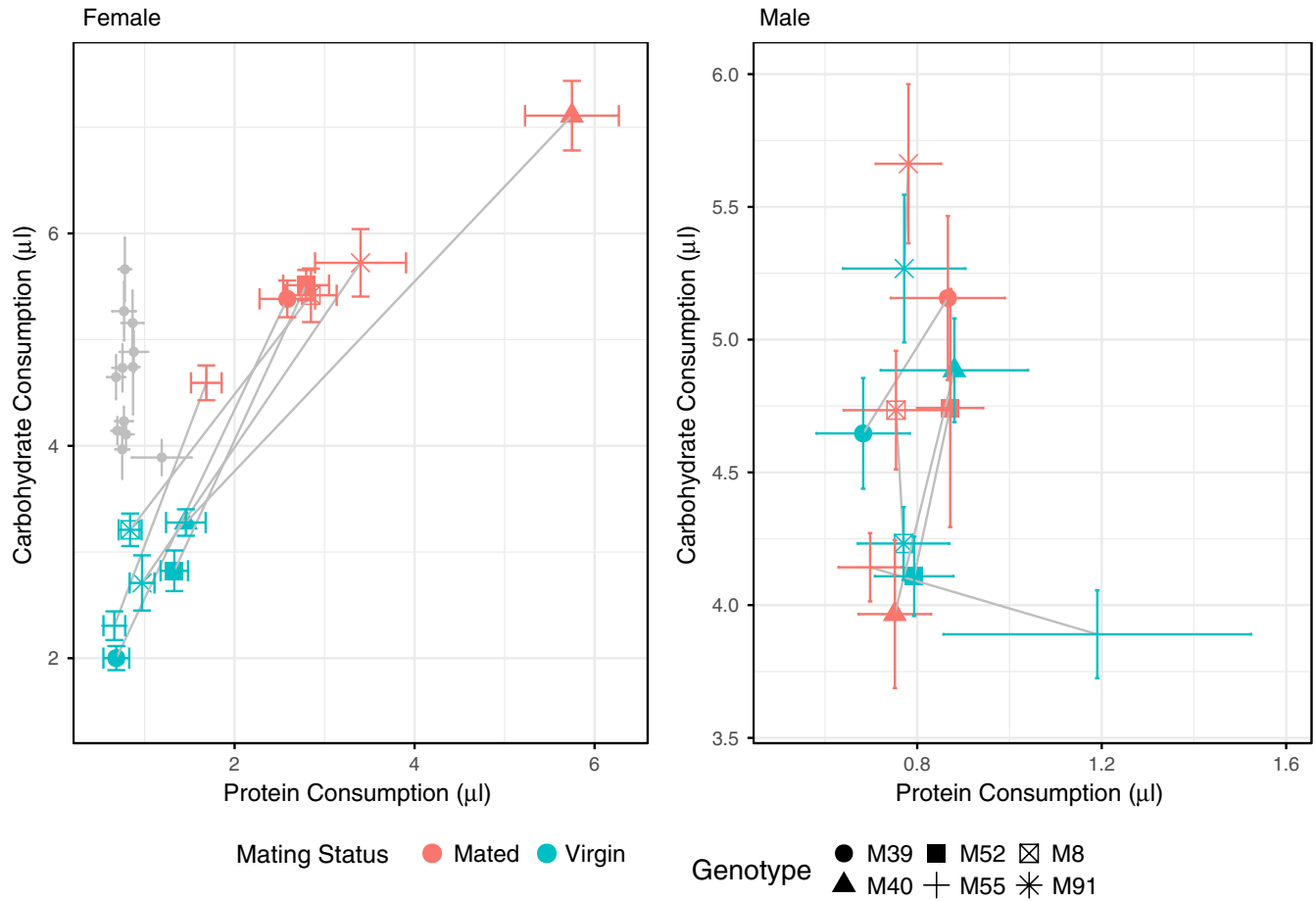


FIGURE 2 Genotype-specific dietary response to mating for females (left) and males (right), measured as the intake (mean \pm SE) of protein (x-axis) and carbohydrate (y-axis). Given the difference in scale of dietary preference between the sexes, we have also plotted the male values (gray data points) within the female plot to make the sex differences obvious

conditions similar for both sexes and males mated only once with a given female, then their sperm stores may have been insufficiently depleted to trigger dietary change. It would be interesting to go on to explicitly test whether sperm depleted males undergo a dietary switch similar to that in females. Although there is no general mating trend in males, we did find significant genotype and interaction between mating status and genotype effects. Closer inspection of the univariate models shows that these significant effects were driven by overall food consumption, rather than quality of the food (Table 1). These results suggest that different male genotypes chose to consume different quantities of macronutrients, and in addition respond differently to mating. The genotype-specific mating response does not follow a general trend (unlike females), with some genotypes eating more and others eating less postmating (Figures 2 and 3). It is noteworthy that when examining the quantities of macronutrient consumption (Figure 2), much of the overall genetic variation between genotypes was in the carbohydrate axis, while protein consumption was relatively invariant between genotypes. Focal males were housed in trios, and this may have placed a premium on behavioral traits involved in coping tactics such as male–male aggression (to fend off potential rivals), or locomotory activity to decamp from rivals. Carbohydrates provide high levels of energy in a short period

of time so it is plausible that carbohydrate intake could be a sensitive indicator of variation between genotypes in such coping behavior.

Our results raise questions about which evolutionary mechanisms could maintain these levels of standing genetic variance in metabolic requirement. Previous work has found genetic variance for diet preference, with significant positive between-sex genetic correlation (Reddix et al., 2013). Genetic variance for diet preference could be maintained due to antagonistic selection on metabolism/physiology. This is because both sexes share many metabolic traits which are under selection to optimize contrasting reproductive demands between the sexes. Alternatively, both epistatic (He, Qian, Wang, Li, & Zhang, 2010; Jakubowska & Korona, 2012; Jasnos & Korona, 2007) and/or balancing selection via temporal variation in environmental conditions (Bergland, Behrman, O'Brien, Schmidt, & Petrov, 2014) could also be mechanisms to maintain genetic variance. One study has found season-dependent oscillating patterns of allele frequency change of central metabolic and nutrient sensing genes (Cogni et al., 2015). Those results suggest that climate factors driving latitudinal molecular variation in a metabolic pathway are related to those operating on a seasonal level within populations. Our results are in line with transcriptomic analyses performed by Immonen et al., 2017 by highlighting a mating response that is principally

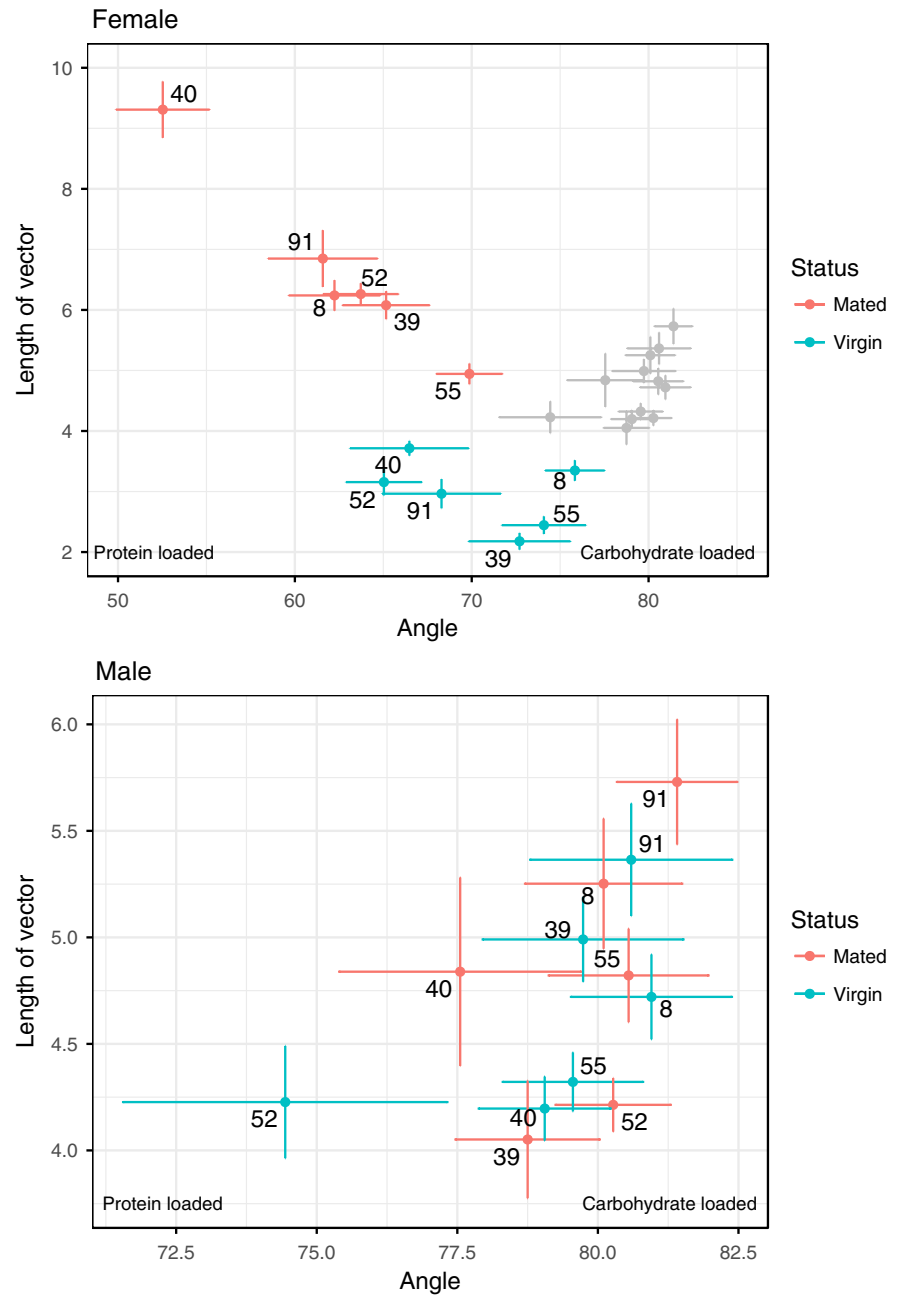


FIGURE 3 Genotype-specific dietary responses to mating for females (top) and males (bottom) measured as the mean \pm SE of angle (food quality, x-axis) and length (food quantity, y-axis) of the genotype-specific vector. Given the difference in scale of dietary preference between the sexes, we have also plotted the male values (gray data points) within the female plot to make the sex differences obvious

female specific. Immonen et al., 2017 compared the transcriptional profile of virgin and recently mated seed beetles (*C. maculatus*) in both sexes. Although both sexes showed differential expression of metabolic genes after mating, the females had 6 times more genes responding to mating than males. In the future, it would be valuable to verify whether genotype-specific dietary preference differences in our genotypes are also linked to transcriptional responses.

Although our protein diet was composed mostly of purified amino acids plus the vitamins/minerals/lipid buffer, it contained 4% carbohydrate from yeast extract. This was necessary because our preliminary data established that flies would not eat a purely synthetic protein diet made of purified amino acids, implying that the holidic medium might lack a key sensory cue for the fly. While we cannot fully disentangle the possible effects of carbohydrate in

our protein diet, that diet has a much greater protein concentration (>90%: amino acids, vitamins/minerals/lipid buffer, yeast extract) than all previous studies (~42%: yeast extract) and thus our study is more informative about the effects of protein on dietary preference.

In conclusion, we observe a dietary switch in response to mating, whereby flies changed both the quantity and quality of their preferred diet as a result of mating. Although we observed a greater response in females, both sexes showed significant levels of genotypic variance for dietary choice. These results align with published data, whereby females increase the amount of diet consumed following mating, with a general shift in the balance of macronutrients to a higher concentration of protein (Corrales-Carvajal et al., 2016; Ribeiro & Dickson, 2010; Vargas et al., 2010). Our data suggest that there is genotypic variation in metabolic processing and/or nutrient signaling in *D.*

melanogaster, ultimately causing variation in fitness. Future research ought to focus on identifying the genetic architecture of variation in the metabolic pathways that selection can act upon and examining how selection acts on dietary choices made by each sex.

ACKNOWLEDGMENTS

We thank the Reuter Group members for useful discussions and help with experiments. We also thank two anonymous reviewers for helpful comments on the manuscript.

COMPETING INTERESTS

We declare no competing interests.

AUTHORS CONTRIBUTIONS

MFC, MR, and KF conceived the study, analyzed the data, and wrote the manuscript. MFC and CCH conducted the experiment.

DATA ACCESSIBILITY

All data can be accessed on Dryad repository (<https://doi.org/10.5061/dryad.mn3gq21>)

ORCID

M. Florencia Camus  <http://orcid.org/0000-0003-0626-6865>

Max Reuter  <http://orcid.org/0000-0001-9554-0795>

Kevin Fowler  <http://orcid.org/0000-0001-9737-7549>

REFERENCES

- Bergland, A. O., Behrman, E. L., O'Brien, K. R., Schmidt, P. S., & Petrov, D. A. (2014). Genomic evidence of rapid and stable adaptive oscillations over seasonal time scales in *Drosophila*. *PLoS Genetics*, *10*, e1004775. <https://doi.org/10.1371/journal.pgen.1004775>
- Bownes, M., Lineruth, K., & Mauchline, D. (1991). Egg production and fertility in *Drosophila* depend upon the number of yolk-protein gene copies. *Molecular and General Genetics*, *228*, 324–327.
- Bunning, H., Rapkin, J., Belcher, L., Archer, C. R., Jensen, K., & Hunt, J. (2015). Protein and carbohydrate intake influence sperm number and fertility in male cockroaches, but not sperm viability. *Proceedings of the Royal Society of London B: Biological Sciences*, *282*, 20142144. <https://doi.org/10.1098/rspb.2014.2144>
- Camus, M. F., Fowler, K., Piper, M. W. D., & Reuter, M. (2017). Sex- and genotype-effects on nutrient-dependent fitness landscapes in *Drosophila melanogaster*. *Proceedings of the Royal Society of London B: Biological Sciences*, *284*, 20172237. <https://doi.org/10.1098/rspb.2017.2237>
- Chapman, T., Liddle, L. F., Kalb, J. M., Wolfner, M. F., & Partridge, L. (1995). Cost of mating in *Drosophila melanogaster* females is mediated by male accessory gland products. *Nature*, *373*, 241–244. <https://doi.org/10.1038/373241a0>
- Chippindale, A. K., Gibson, J. R., & Rice, W. R. (2001). Negative genetic correlation for adult fitness between sexes reveals ontogenetic conflict in *Drosophila*. *Proceedings of the National Academy of Sciences of the United States of America*, *98*, 1671–1675. <https://doi.org/10.1073/pnas.98.4.1671>
- Cogni, R., Kuczynski, K., Lavington, E., Koury, S., Behrman, E. L., O'Brien, K. R., ... Eanes, W. F. (2015). Variation in *Drosophila melanogaster* central metabolic genes appears driven by natural selection both within and between populations. *Proceedings of the Royal Society of London B: Biological Sciences*, *282*, 20142688.
- Corrales-Carvajal, V. M., Faisal, A. A., & Ribeiro, C. (2016). Internal states drive nutrient homeostasis by modulating exploration-exploitation trade-off. *eLife*, *5*, e19920.
- Dalton, J. E., Kacheria, T. S., Knott, S. R., Lebo, M. S., Nishitani, A., Sanders, L. E., ... Arbeitman, M. N. (2010). Dynamic, mating-induced gene expression changes in female head and brain tissues of *Drosophila melanogaster*. *BMC Genomics*, *11*, 541. <https://doi.org/10.1186/1471-2164-11-541>
- Ellis, L. L., & Carney, G. E. (2010). Mating alters gene expression patterns in *Drosophila melanogaster* male heads. *BMC Genomics*, *11*, 558. <https://doi.org/10.1186/1471-2164-11-558>
- Gromko, M. H., Gilbert, D. G., & Richmond, R. C. (1984). Sperm transfer and use in the multiple mating system of *Drosophila*. In R. L. Smith (Ed.), *Sperm competition and the evolution of animal mating systems* (pp. 371–426). New York, NY: Academic Press. <https://doi.org/10.1016/B978-0-12-652570-0.50017-8>
- He, X., Qian, W., Wang, Z., Li, Y., & Zhang, J. (2010). Prevalent positive epistasis in *Escherichia coli* and *Saccharomyces cerevisiae* metabolic networks. *Nature Genetics*, *42*, 272–276. <https://doi.org/10.1038/ng.524>
- Immonen, E., Sayadi, A., Bayram, H., & Arnqvist, G. (2017). Mating changes sexually dimorphic gene expression in the seed beetle *Callosobruchus maculatus*. *Genome Biology and Evolution*, *9*, 677–699. <https://doi.org/10.1093/gbe/evx029>
- Innocenti, P., & Morrow, E. H. (2009). Immunogenic males: A genome-wide analysis of reproduction and the cost of mating in *Drosophila melanogaster* females. *Journal of Evolutionary Biology*, *22*, 964–973. <https://doi.org/10.1111/j.1420-9101.2009.01708.x>
- Jakubowska, A., & Korona, R. (2012). Epistasis for growth rate and total metabolic flux in yeast. *PLoS ONE*, *7*, e33132. <https://doi.org/10.1371/journal.pone.0033132>
- Jasnos, L., & Korona, R. (2007). Epistatic buffering of fitness loss in yeast double deletion strains. *Nature Genetics*, *39*, 550–554. <https://doi.org/10.1038/ng1986>
- Jensen, K., McClure, C., Priest, N. K., & Hunt, J. (2015). Sex-specific effects of protein and carbohydrate intake on reproduction but not lifespan in *Drosophila melanogaster*. *Aging Cell*, *14*, 605–615. <https://doi.org/10.1111/acel.12333>
- Kubli, E. (2010). Sexual behavior: Dietary food switch induced by sex. *Current Biology*, *20*, R474–R476. <https://doi.org/10.1016/j.cub.2010.04.038>
- Lawniczak, M. K., & Begun, D. J. (2004). A genome-wide analysis of courting and mating responses in *Drosophila melanogaster* females. *Genome*, *47*, 900–910. <https://doi.org/10.1139/g04-050>
- Liu, H. F., & Kubli, E. (2003). Sex-peptide is the molecular basis of the sperm effect in *Drosophila melanogaster*. *Proceedings of the National Academy of Sciences of the United States of America*, *100*, 9929–9933. <https://doi.org/10.1073/pnas.1631700100>
- Maklakov, A. A., Simpson, S. J., Zajitschek, F., Hall, M. D., Dessmann, J., Clissold, F., ... Brooks, R. C. (2008). Sex-specific fitness effects of nutrient intake on reproduction and lifespan. *Current Biology*, *18*, 1062–1066. <https://doi.org/10.1016/j.cub.2008.06.059>
- Minoo, P., & Postlethwait, J. H. (1985). Processing and secretion of a mutant yolk polypeptide in *Drosophila*. *Biochemical Genetics*, *23*, 913–932. <https://doi.org/10.1007/BF00499937>
- Piper, M. D. W., Blanc, E., Leitao-Goncalves, R., Yang, M. Y., He, X. L., Linford, N. J., ... Partridge, L. (2014). A holidic medium for *Drosophila melanogaster*. *Nature Methods*, *11*, 100–105. <https://doi.org/10.1038/nmeth.2731>

- Piper, M. D. W., & Partridge, L. (2007). Dietary restriction in *Drosophila*: Delayed aging or experimental artefact? *PLoS Genetics*, 3, e57. <https://doi.org/10.1371/journal.pgen.0030057>
- Reddiex, A. J., Gosden, T. P., Bonduriansky, R., & Chenoweth, S. F. (2013). Sex-specific fitness consequences of nutrient intake and the evolvability of diet preferences. *American Naturalist*, 182, 91–102. <https://doi.org/10.1086/670649>
- Ribeiro, C., & Dickson, B. J. (2010). Sex peptide receptor and neuronal TOR/S6K signaling modulate nutrient balancing in *Drosophila*. *Current Biology*, 20, 1000–1005.
- Rice, W. R. (1996). Sexually antagonistic male adaptation triggered by experimental arrest of female evolution. *Nature*, 381, 232–234. <https://doi.org/10.1038/381232a0>
- Rolff, J., & Siva-Jothy, M. T. (2002). Copulation corrupts immunity: A mechanism for a cost of mating in insects. *Proceedings of the National Academy of Sciences of the United States of America*, 99, 9916–9918. <https://doi.org/10.1073/pnas.152271999>
- Sgrò, C. M., Chapman, T., & Partridge, L. (1998). Sex-specific selection on time to remate in *Drosophila melanogaster*. *Animal Behavior*, 56, 1267–1278. <https://doi.org/10.1006/anbe.1998.0900>
- Simmons, F. H., & Bradley, T. J. (1997). An analysis of resource allocation in response to dietary yeast in *Drosophila melanogaster*. *Journal of Insect Physiology*, 43, 779–788. [https://doi.org/10.1016/S0022-1910\(97\)00037-1](https://doi.org/10.1016/S0022-1910(97)00037-1)
- Sirof, L. K., Buehner, N. A., Fiumera, A. C., & Wolfner, M. F. (2009). Seminal fluid protein depletion and replenishment in the fruit fly, *Drosophila melanogaster*: An ELISA-based method for tracking individual ejaculates. *Behavioral Ecology and Sociobiology*, 63, 1505–1513. <https://doi.org/10.1007/s00265-009-0806-6>
- Team, R. C. (2016). *R: A language and environment for statistical computing*. Vienna, Austria: R Foundation for Statistical Computing.
- Terashima, J., & Bownes, M. (2004). Translating available food into the number of eggs laid by *Drosophila melanogaster*. *Genetics*, 167, 1711–1719. <https://doi.org/10.1534/genetics.103.024323>
- Trivers, R. L. (1972). Parental investment and sexual selection. In B. G. Campbell (Ed.), *Sexual selection and the descent of man* (pp. 136–179). Chicago, IL: Aldine-Atherton.
- Vargas, M. A., Luo, N., Yamaguchi, A., & Kapahi, P. (2010). A role for S6 kinase and serotonin in postmating dietary switch and balance of nutrients in *D. melanogaster*. *Current Biology*, 20, 1006–1011. <https://doi.org/10.1016/j.cub.2010.04.009>

SUPPORTING INFORMATION

Additional Supporting Information may be found online in the supporting information tab for this article.

How to cite this article: Camus MF, Huang C-C, Reuter M, Fowler K. Dietary choices are influenced by genotype, mating status, and sex in *Drosophila melanogaster*. *Ecol Evol*. 2018;8:5385–5393. <https://doi.org/10.1002/ece3.4055>