

SCIENTIFIC REPORTS



OPEN

Plasma androgen receptor and serum chromogranin A in advanced prostate cancer

Vincenza Conteduca^{1,2}, Emanuela Scarpì³, Samanta Salvi⁴, Valentina Casadio⁴, Cristian Lolli¹, Giorgia Gurioli⁴, Giuseppe Schepisi¹, Daniel Wetterskog², Alberto Farolfi¹, Cecilia Menna¹, Delia De Lisi⁵, Salvatore Luca Burgio¹, Himisha Beltran⁶, Gerhardt Attard^{2,7} & Ugo De Giorgi¹

Recently, mixed forms between adenocarcinoma and neuroendocrine prostate cancer (NEPC) have emerged that are characterized by persistent androgen receptor (AR)-signalling and elevated chromogranin A (CgA) levels. The main aim of this study was to analyze castration-resistant prostate cancer (CRPC) patients treated with abiraterone or enzalutamide, assessing progression-free/overall survival (PFS/OS) in association with circulating AR and CgA. AR aberrations were analyzed by droplet digital PCR in pre-treatment plasma samples collected from two biomarker protocols [197 patients from a retrospective study (REC 2192/2013) and 59 from a prospective trial (REC 6798/2015)]. We subdivided patients into three groups according to CgA by receiver-operating characteristic (ROC) curves. In the primary cohort, plasma AR gain and mutations (p.L702H/p.T878A) were detected in 78 (39.6%) and 16 (8.1%) patients, respectively. We observed a significantly worse PFS/OS in patients with higher-CgA than in patients with normal-CgA, especially those with no AR-aberrations. Multivariable analysis showed AR gain, higher-CgA and LDH levels as independent predictors of PFS [hazard ratio (HR) = 2.16, 95% confidence interval (95% CI) 1.50–3.12, $p < 0.0001$, HR = 1.73, 95% CI 1.06–2.84, $p = 0.026$, and HR = 2.13, 95% CI 1.45–3.13, $p = 0.0001$, respectively] and OS (HR = 1.72, 95% CI 1.15–2.57, $p = 0.008$, HR = 3.63, 95% CI 2.13–6.20, $p < 0.0001$, and HR = 2.31, 95% CI 1.54–3.48, $p < 0.0001$, respectively). These data were confirmed in the secondary cohort. Pre-treatment CgA detection could be useful to identify these mixed tumors and would seem to have a prognostic role, especially in AR-normal patients. This association needs further evaluation in larger prospective cohorts.

Prostate cancer is the most commonly diagnosed cancer in men worldwide and a major cause of cancer death¹. After an initial response to medical or surgical castration, the disease will progress to castration-resistant prostate cancer (CRPC)². Many drugs with different mechanisms of action are currently available for CRPC patients and have led to a significant benefit in survival^{3–8}. However, the identification of predictive factors could help clinicians to better select the next-line systemic therapy on the basis of molecular risk stratification. The implementation of these biomarkers in routine clinical practice would substantially facilitate patient-tailored treatment.

The molecular landscape of CRPC provides insights into the mechanisms of tumor heterogeneity and treatment resistance^{9–11}. Resistance in CRPC is typically driven by the reactivation of androgen receptor (AR) signalling, occurring through AR splice variants (such as AR-V7), and AR point mutations or amplification, which can be detected in blood^{12–20}. In recent years, cell-free DNA has emerged as a promising and non-invasive biomarker for the characterization of the tumor genome²¹. Approximately 3% of tumor DNA is released into the blood daily, most likely deriving from apoptosis/necrosis of malignant cells²². High levels of cell-free DNA (4- to 6-fold that

¹Department of Medical Oncology, Istituto Scientifico Romagnolo per lo Studio e la Cura dei Tumori (IRST) IRCCS, via Maroncelli 40, 47014, Meldola, Italy. ²The Institute of Cancer Research and the Royal Marsden, 15 Cotswold Road, Sutton, Surrey, SM2 5NG, UK. ³Unit of Biostatistics and Clinical Trials, Istituto Scientifico Romagnolo per lo Studio e la Cura dei Tumori (IRST) IRCCS, via Maroncelli 40, 47014, Meldola, Italy. ⁴Biosciences Laboratory, Istituto Scientifico Romagnolo per lo Studio e la Cura dei Tumori (IRST) IRCCS, via Maroncelli 40, 47014, Meldola, Italy. ⁵Medical Oncology Department, Campus Bio-Medico University, Via Alvaro del Portillo 200, 00128, Rome, Italy. ⁶Division of Medical Oncology, Weill Cornell Medicine, New York, NY, 10021, USA. ⁷Academic Urology Unit, The Royal Marsden NHS Foundation Trust, London, UK. Correspondence and requests for materials should be addressed to Vincenza Conteduca (email: vincenza.conteduca@irst.emr.it)

of healthy controls) have been detected in patients with tumors, including prostate cancer²². Recently, AR gene aberrations detected in cell-free DNA of CRPC patients using PCR-based methods or next generation sequencing have been associated with worse outcome and resistance to abiraterone and enzalutamide, suggesting a potential predictive/prognostic role for plasma AR status^{12–17}.

In CRPC, neuroendocrine differentiation (NED) represents an alternative AR-independent mechanism of resistance to cancer therapeutics, especially androgen deprivation agents. Neuroendocrine prostate cancer (NEPC) is uncommon and characterized by decreased prostate specific antigen (PSA) secretion, and usually by the expression of neuroendocrine markers, such as chromogranin A (CgA), synaptophysin, and neuron specific enolase (NSE)^{23,24}. In addition, NEPC usually shows loss of AR expression and suppressed AR signalling, while AR aberrations (point mutation and gain) are present at low levels, probably because of clonal selection of non-amplified prostate adenocarcinoma subpopulations through selective pressure, especially during anti-AR therapies²⁴. *De novo* small-cell prostate cancer, a highly aggressive histologic variant, is present in <1% of untreated prostate cancers, whereas the frequency of treatment-related NEPC has been reported as occurring in up to 20% of patients during the course of CRPC progression^{23–25}. A recent classification of neuroendocrine prostatic tumors²⁶ showed variants of neuroendocrine prostate cancer, including a mixed form between NEPC and conventional adenocarcinoma, usually characterized by AR independence. However, mixed tumors have been also observed with both AR positive and AR negative cells and, on occasion, with dual expression of both neuroendocrine markers and AR in the same tumor cells due to inter- and intra-patient clinical and pathologic heterogeneity. Consequently, a more accurate clinical and molecular classification is needed for these overlapping clinical entities, and further research is warranted to identify their prognostic impact²⁷.

In addition, elevated levels of serum CgA, commonly observed in NEPC, may increase in CRPC patients with adenocarcinoma histology²⁸ who show a shorter survival than those with normal CgA values^{29,30}.

Our main objective was to identify the correlation between AR status and CgA level before the administration of anti-AR therapies and in different settings (chemotherapy-naïve and chemotherapy-treated patients) in prostate adenocarcinoma. We also evaluated the impact on treatment outcome of CgA levels in association with cell-free AR status.

Results

Overall patient characteristics. The primary cohort included 197 patients from a retrospective biomarker study (REC 2192/2013) and the secondary cohort consisted of 59 from a prospective biomarker trial (REC 6798/2015). Patients with available pre-treatment serum CgA and plasma DNA for detection of AR gene aberration were considered evaluable. All patients in both cohorts underwent prostate biopsy and/or prostatectomy at diagnosis with a confirmed histology of prostate adenocarcinoma without NED. Median age was 73 years (range, 42–91) and 75 (range, 48–89) in the primary and secondary cohorts, respectively. The prospective biomarker trial was more recent than retrospective study and, consequently, included many more chemotherapy-naïve cases treated with abiraterone or enzalutamide (N = 38, 64.4%) than the retrospective study (N = 40, 20.3%). This substantial difference may justify the different baseline characteristics between the two cohorts (e.g., presence of visceral metastases and number of previous treatments).

The median serum CgA level was 122 ng/mL (range, 10–1000) (normal CgA value < 120 ng/mL). However, the receiver-operating characteristic (ROC) analysis, one of the most commonly used methods to analyze the effectiveness of a diagnostic, was used to evaluate the role of pre-treatment serum CgA for assessing the response to no response to treatment with abiraterone or enzalutamide. The cutoffs for CgA in response to AR-directed therapies were calculated through the area under the ROC curve (AUC), as previously reported^{29,30}. In the primary cohort, serum CgA level was considered normal in 92 (46.7%) patients, elevated but ≤ 3-fold the upper normal value (UNV) in 66 (33.5%) and ≥ 3-fold the UNV in 39 (20.3%) patients. A similar distribution of CgA levels was observed in the secondary cohort. We assessed AR status in cell-free DNA showing AR copy number (CN) gain in 78 (39.6%) and AR mutations (p.L702H or p.T878A) in 16 (8.1%) patients of the primary cohort. In the secondary cohort, plasma AR gain and mutations were reported in 11 (18.6%) and 2 (3.4%) patients, respectively. All patient characteristics are summarized in Table 1.

Association between baseline cell-free AR aberrations and serum CgA. No significant differences were observed in either cohort between cell-free AR status and CgA measurements, with the exception of a trend (p = 0.057) of higher CgA level in AR-gained chemotherapy-naïve patients of the secondary cohort (Table 2). Using a different cut-off for CgA levels, we observed concordant results showing no correlation between AR status and serum CgA concentration (Supplementary Table S1).

Combination of AR status with CgA levels and PSA response. Median baseline PSA was 44.5 ng/mL (range, 1.48–4351), and our results did not reveal a significant difference between PSA and CgA levels (Supplementary Table S2) (as commonly shown in NEPC)^{24,30}.

No association was seen between PSA response and CgA levels according to cell-free AR copy number (CN) in the primary and secondary cohort (Supplementary Table S3).

Combination of AR status with CgA levels and survival. The median follow-up of patients from the primary and secondary cohort was 32.4 months (range, 1–73) and 17.6 months (range, 1–49), respectively.

We did not evaluate the impact of AR mutations on treatment outcome because cell-free AR mutations were uncommon, especially in chemotherapy-naïve patients, as shown in previous studies^{10,12,13}, and the clinical relevance of rarer mutations is uncertain. Our droplet digital PCR (ddPCR) assay detected point mutations present in at least 2% of plasma DNA.

	Primary Cohort			Secondary Cohort		
	Total (n = 197)	Abi/Enza pre-docetaxel (n = 40)	Abi/Enza post-docetaxel (n = 157)	Total (n = 59)	Abi/Enza pre- docetaxel (n = 38)	Abi/Enza post- docetaxel (n = 21)
	n (%)	n (%)	n (%)	n (%)	n (%)	n (%)
Age, years median value (range)	73 (42–91)	72 (59–89)	73 (42–91)	75 (48–89)	75 (48–89)	76 (64–86)
Gleason score						
6–7	73 (41.5)	18 (51.4)	55 (39.0)	19 (39.6)	13 (41.9)	6 (35.3)
8–10	103 (58.5)	17 (48.6)	86 (61.0)	29 (60.4)	18 (58.1)	11 (64.7)
Unknown/missing	21	5	16	11	7	4
Metastatic sites						
No visceral	162 (82.6)	39 (97.5)	123 (78.8)	58 (98.3)	37 (97.4)	21 (100)
Visceral	34 (17.4)	1 (2.5)	33 (21.1)	1 (1.7)	1 (2.6)	0
Unknown	1	0	1	0	0	0
Lines of previous treatments						
≤2	122 (61.9)	40 (100)	82 (52.2)	51 (86.4)	37 (97.4)	14 (66.7)
>2	75 (38.1)	0	75 (47.8)	8 (13.6)	1 (2.6)	7 (33.3)
Previous abi or enza treatment						
No	147 (74.6)	36 (90.0)	111 (70.7)	54 (91.5)	36 (94.7)	18 (85.7)
Yes	50 (25.4)	4 (10.0)	46 (29.3)	5 (8.5)	2 (5.3)	3 (14.3)
ECOG						
0–1	180 (91.4)	39 (97.5)	141 (89.8)	56 (94.9)	35 (92.1)	21 (100)
≥2	17 (8.6)	1 (2.5)	16 (10.2)	3 (5.1)	3 (7.9)	0
AR copy number						
Normal	119 (60.4)	29 (72.5)	90 (57.3)	48 (81.4)	32 (84.2)	16 (76.2)
Gain	78 (39.6)	11 (27.5)	67 (42.7)	11 (18.6)	6 (15.8)	5 (23.8)
AR mutations						
No	181 (91.9)	38 (95.0)	143 (91.1)	57 (96.6)	37 (97.4)	20 (95.2)
Yes	16 (8.1)	2 (5.0)	14 (8.9)	2 (3.4)	1 (2.6)	1 (4.8)
CgA, ng/mL						
<120	92 (46.7)	33 (82.5)	59 (37.6)	30 (50.9)	20 (52.6)	10 (47.6)
120–360	66 (33.5)	6 (15.0)	60 (38.2)	18 (30.5)	12 (31.6)	6 (28.6)
>360	39 (19.8)	1 (2.5)	38 (24.2)	11 (18.6)	6 (15.8)	5 (23.8)
Baseline ALP, U/L median value (range)	112 (35–1345)	97 (44–310)	120 (35–1345)	110 (12–321)	110 (12–321)	116 (40–259)
<129	83 (56.5)	20 (66.7)	63 (53.8)	22 (66.7)	16 (69.6)	6 (60.0)
≥129	64 (43.5)	10 (33.3)	54 (46.2)	11 (33.3)	7 (30.4)	4 (40.0)
Unknown	50	10	40	26	15	11
Baseline LDH, U/L median value (range)	186 (67–1808)	156 (67–711)	194 (97–1808)	179 (88–695)	176 (88–675)	199 (98–695)
<225	116 (72.0)	33 (86.8)	83 (67.5)	41 (85.4)	431 (91.2)	10 (71.4)
≥225	45 (28.0)	5 (13.2)	40 (32.5)	7 (14.6)	3 (8.8)	4 (28.6)
Unknown	36	2	34	11	4	7
Baseline NLR						
<3	104 (58.1)	20 (55.6)	84 (58.7)	19 (48.7)	14 (50.0)	5 (45.5)
≥3	75 (41.9)	16 (44.4)	59 (41.3)	20 (51.3)	14 (50.0)	6 (54.5)
Unknown/missing	18	4	14	20	10	10
Baseline Hb, g/dL median value (range)	12 (7–15.5)	13.1 (10.2–15.5)	11.8 (7.0–15.1)	12.2 (10.8–101)	12.3 (10.8–101)	12 (11–13)
Baseline PSA, ng/mL median value (range)	41.6 (1.48–4351)	27.45 (1.48–183.3)	51.98 (1.48–4351)	20.5 (1.48–4294)	27.02 (1.48–429)	17.39 (3.80–1899)

Table 1. Patient characteristics in the Primary and Secondary Cohort. *Abbreviations.* Abi, abiraterone; ALP, alkaline phosphatase; AR, androgen receptor; CgA, chromogranin A; ECOG, Eastern Cooperative Oncology Group; enza, enzalutamide; Hb, haemoglobin; LDH, lactate dehydrogenase; n, number; NLR, neutrophil to lymphocyte ratio; PLR, platelets to lymphocyte ratio; PSA, prostate-specific antigen.

In both cohorts, we observed a significant association between worse progression-free/overall survival (PFS/OS) and elevated CgA levels in AR-normal patients treated with abiraterone or enzalutamide, more evident in post-docetaxel setting for the primary cohort or in pre-docetaxel for the secondary cohort (Figs 1 and 2; Supplementary Tables S4 and S5).

	Primary cohort						Secondary cohort					
	AR copy number			AR mutations			AR copy number			AR mutations		
	Normal (n = 119)	Gain (n = 78)	p	No (n = 181)	Yes (n = 16)	p	Normal (n = 48)	Gain (n = 11)	p	No (n = 57)	Yes (n = 2)	p
Abi/Enza pre-docetaxel, n (%)												
CgA <120	25 (86.2)	8 (72.7)		31 (81.6)	2 (100.0)		19 (59.4)	1 (16.7)		20 (54.1)	0 (0)	
120–360	3 (10.3)	3 (27.3)		6 (15.8)	0 (0)		9 (28.1)	3 (50.0)		12 (32.4)	0 (0)	
>360	1 (3.5)	0 (0)	0.542	1 (2.6)	0 (0)	0.532	4 (12.5)	2 (33.3)	0.057	5 (13.5)	1 (100)	0.065
Abi/Enza post-docetaxel, n (%)												
CgA <120	35 (38.9)	24 (35.8)		55 (38.5)	4 (28.6)		7 (43.7)	3 (60.0)		10 (50.0)	0 (0)	
120–360	39 (43.3)	21 (31.3)		55 (38.5)	5 (35.7)		4 (25.0)	2 (40.0)		5 (25.0)	1 (100)	
>360	16 (17.8)	22 (32.9)	0.148	33 (23.1)	5 (35.7)	0.300	5 (31.3)	0 (0)	0.264	5 (25.0)	0 (0)	0.769

Table 2. Association between baseline cell-free AR aberrations and serum CgA in the Primary and Secondary cohort. *Abbreviations.* Abi, abiraterone; AR, androgen receptor; CgA, chromogranin A; enza, enzalutamide; n, number; UNV, upper normal value.

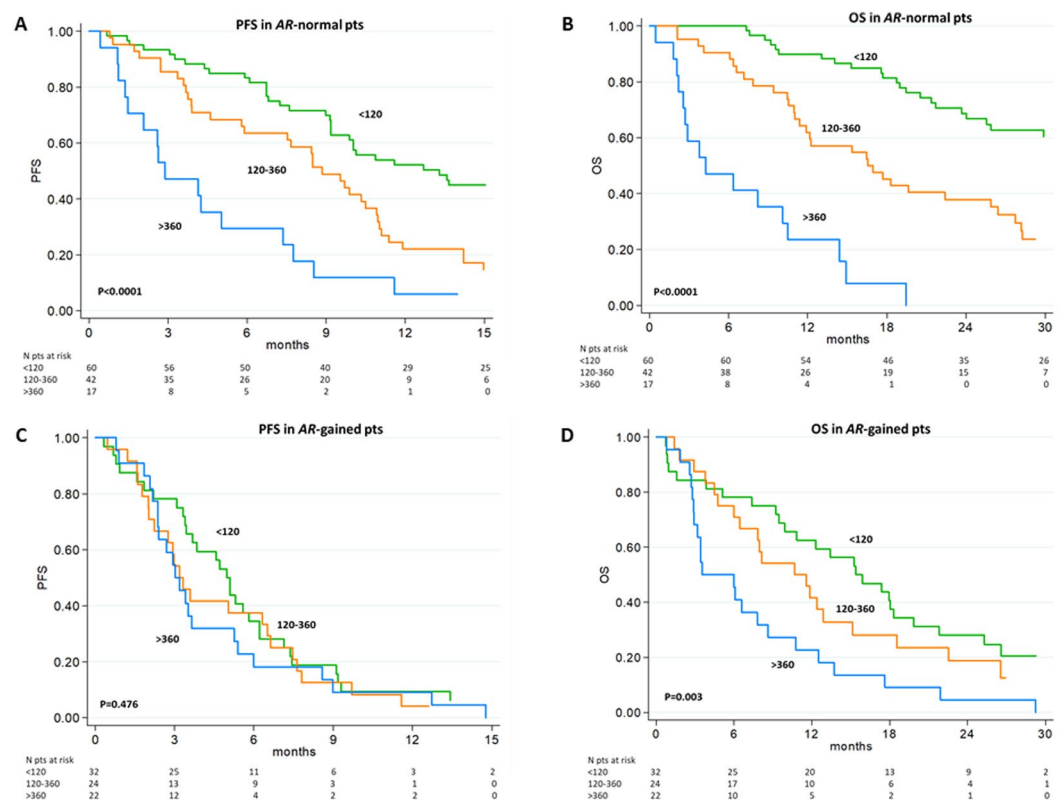


Figure 1. Survival in patients treated with abiraterone or enzalutamide by AR status and CgA levels in the Primary cohort. PFS (A) and OS (B) in AR-normal and PFS (C) and OS (D) in AR-gained patients according to three different CgA level groups. The blue line is for patients with serum CgA <120 ng/mL, the orange line for CgA between 120 and 360 ng/mL, and the green line for CgA level >360 ng/mL.

Multivariable analysis revealed AR gain and higher CgA and lactate dehydrogenase (LDH) levels as an independent predictors of PFS [hazard ratio (HR) 2.16, 95% confidence interval (CI) 1.50–3.12, $p < 0.0001$, HR 1.73, 95% CI 1.06–2.84, $p = 0.026$, and HR 2.13, 95% CI 1.45–3.13, $p = 0.0001$, respectively] and OS (HR 1.72, 95% CI 1.15–2.57, $p = 0.008$, HR 3.63, 95% CI 2.13–6.20, $p < 0.0001$, and HR 2.31, 95% CI 1.54–3.48, $p < 0.0001$, respectively) (Supplementary Table S6). In the secondary cohort, higher CgA concentration was confirmed as independent predictors of PFS and OS (HR 4.16, 95% CI 1.51–11.49, $p = 0.006$ and HR 62.97, 95% CI 5.08–781.12, $p = 0.001$, respectively), together with AR gain and elevated LDH level.

In overall patient population, interactions between treatment (abiraterone versus enzalutamide) and AR status examined in the Cox models were not significant ($p = 0.131$ for PFS and $p = 0.598$ for OS).

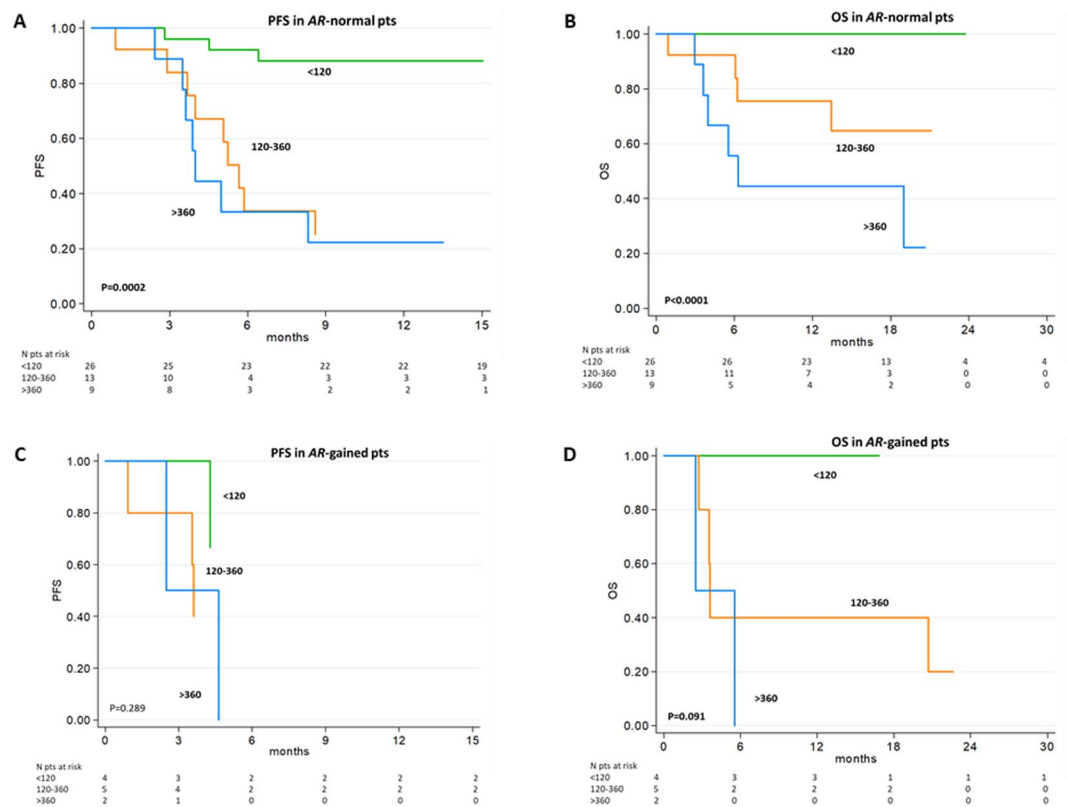


Figure 2. Survival in patients treated with abiraterone or enzalutamide by AR status and CgA levels in the Secondary cohort. PFS (A) and OS (B) in AR-normal and PFS (C) and OS (D) in AR-gained patients according to three different CgA level groups. The blue line is for patients with serum CGA <120 ng/mL, the orange line for CGA between 120 and 360 ng/mL, and the green line for CGA level >360 ng/mL.

Discussion

The growing use of AR-directed agents and a higher number of biopsies performed not only at diagnosis, but also at different time points during the course of prostate cancer are leading to an increased detection of NEPCs, especially treatment-related forms. However, the challenge to repeat biopsies before starting new treatment for CRPC is not always feasible and in such cases only elevated serum neuroendocrine markers can facilitate the diagnosis of these particular forms of prostate cancer. Our study, which excluded patients with NEPC or small cell carcinoma histology and aimed to evaluate the clinical impact of determining circulating NED biomarkers in metastatic CRPC patients before a systemic treatment.

Assuming that CgA is a reliable prognostic marker^{29,30}, we divided the patients into different subgroups based on pre-therapy CgA levels. Patients treated with abiraterone/enzalutamide post-docetaxel underwent at least 2 different treatments and showed more elevated serum CgA level than chemotherapy-naïve cases indicating that NED is often secondary to androgen deprivation therapy. In addition, higher levels of CgA were observed in patients with visceral metastases, especially in the liver, and those with increased LDH values and NLR ≥ 3 . This would seem to indicate that association of NED is associated with extent of disease and inflammation in these mixed tumor forms, as in NEPC^{24,31–33}.

The primary histology of cases included in this work excluded a neuroendocrine component. However, our adenocarcinoma cases had hybrid features with both AR and neuroendocrine markers present and high PSA levels. It is possible that these “mixed forms” represent an earlier step of NEPC development nearing the end of an AR-dependent state with a paucity of somatic alterations involving the AR gene²⁴. Although a pathological review of all included cases would have been useful, especially during treatment, at progression and/or during follow-up; the majority of patients did not undergo further biopsy.

The present study confirmed the prognostic impact of higher CgA levels on PFS and OS and the lack of an association between CgA concentration and PSA response, as reported in other works^{28–30,34}. We used CgA levels > 3-fold the UNV as the best cut-off to identify a poorer prognostic group, whereas CgA levels > 5-fold the UNV^{35,36} did not provide robust evidence, probably because of the number of patients in the different groups was not well-balanced in terms of AR status.

Interestingly, we correlated, for the first time, survival data with the presence of cell-free AR aberrations and serum CgA levels, suggesting that the presence of elevated CgA concentration could identify CRPC patients at high-risk of developing NEPC and resistance to AR-signalling inhibitors.

Our multivariable analysis confirmed baseline CgA as an independent predictor of survival and further highlighted the usefulness of AR CN^{12–17} and LDH³⁷ as prognostic markers.

The limitations of this study were its retrospective design, small number of patients included in the different CgA prognostic groups and high number of previous treatments that influenced the homogeneity of results. Moreover, the characteristics of the 2 patient cohorts³⁸ differed slightly but with an uncertain clinical impact (the secondary cohort had a higher number of chemotherapy-naïve patients and a shorter median follow-up period than the primary cohort). A major limitation of this study was the lack of data on AR splice variants¹⁹, as a potential alternative mechanism of therapeutic resistance.

Genome wide DNA sequencing could also be used to study other molecular mechanisms that may lead to the progression of CRPC to NEPC, an effort to define a molecular phenotype of mixed forms between prostate adenocarcinoma and NEPC in association with CgA levels. These include loss of tumor suppressors, such as RB1 and p53^{24,39,40}, and amplification of MYCN²⁴. In addition, the study of non-genomic factors such as PEG10⁴¹, splicing factors like SSRM4^{42,43}, and AKT activation overexpression of the master neural transcription factor BRN2⁴⁴ could contribute to better determining these tumors from a genomic point of view.

Given that germline mutations of DNA repair-deficient prostate cancer have been associated with resistance to abiraterone and enzalutamide³⁸ and that these alterations were recently linked with NED molecular pathways sharing common platinum-sensitivity⁴⁵, mixed forms between prostate adenocarcinoma and NEPC could be also characterized on the basis of a deficit in DNA damage repair, especially in aggressive CRPC variants with AR CN normal.

In conclusion, the evaluation of serum CgA could be key in improving the management of CRPC patients displaying a mixed tumor form between adenocarcinoma and NEPC and treated with standard therapies. Given that these hubris tumors may retain active AR expression and/or signalling, 2 therapeutic options for this patient subgroup could be platinum-based chemotherapy. A combined therapeutic strategy including hormonal drugs and other chemotherapeutic agents or targeted therapies (such as aurora kinase inhibitors²⁴ or BRN2⁴⁴) is probably needed to overcome resistance related to the onset of CgA-expressing clones.

There is now sufficient evidence to warrant carrying out clinical trials that prospectively select treatment on the basis of baseline NED markers such as CgA and molecular alterations that drive progression towards NED phenotype. Further studies may provide a robust evidence for a change of clinical care for this distinct tumor subclass.

Methods

Patients. We collected pre-treatment plasma samples of 256 patients enrolled in 2 biomarkers studies approved by the Institutional Review Board of Istituto Scientifico Romagnolo per lo Studio e la Cura dei Tumori (IRST) IRCCS, Meldola, Italy. We selected 197 CRPC patients of the primary cohort between March 2013 and July 2015, and 59 patients of the secondary cohort between March 2015 and March 2017. All patients had histology of prostate adenocarcinoma without NED and a progressive disease despite “castration levels” of serum testosterone (<50 ng/dL), ongoing LHRH analogue treatment or prior surgical castration. Additional eligibility criteria included an Eastern Cooperative Oncology Group (ECOG) performance status 0–2, adequate cardiac, renal, hepatic and bone marrow function. Exclusion criteria were renal insufficiency and/or concomitant therapy with proton pump inhibitors, which could influence the CgA levels⁴⁶.

Treatment consisted of anti-AR therapies including abiraterone 1 g once a day and prednisone 5 mg twice daily, or enzalutamide 160 mg once a day, in either as pre- or post-chemotherapy setting. The choice of therapy was at the discretion of the treating physician. Therapies were administered continuously until there was evidence of disease progression or unacceptable toxicity. The studies were conducted in accordance with the Declaration of Helsinki and the Good Clinical Practice guidelines of the International Conference of Harmonization. Written informed consent was obtained from all patients.

Procedures. Serum CgA levels were measured in duplicate using a two-sided “sandwich” technique with two selected antibodies that bind to different epitopes of human CgA (Epitope Diagnostics, Inc - EDI Human Chromogranin A ELISA Kit, San Diego, CA), in accordance with the manufacturer’s instructions. The sensitivity was 2 mg/L. The inter-assay coefficients of variation of CgA assay were 7.3% and 3.1%. The normal range reported by the kit for CgA was 0–120 ng/mL.

All patients underwent a history evaluation and physical examination, and blood tests including complete blood cell count, serum PSA, alkaline phosphatase (ALP), and LDH the week before each treatment cycle. PSA and blood tests were performed on a monthly basis. Serum CgA levels were determined at baseline and upon disease progression. Radiographic evaluation was performed by computed tomography and bone scan at the time of screening and every 12 weeks thereafter. Response was evaluated according to Prostate Cancer Working Group (PCWG2) guidelines⁴⁷ and soft tissue disease was assessed using Response Evaluation Criteria in Solid Tumors (RECIST) version 1.1. Peripheral blood samples were collected within 30 days of the start of treatment and plasma aliquots were stored at –80 °C. Circulating DNA was extracted from one to two mL of plasma with the QIAamp Circulating Nucleic Acid Kit (Qiagen). Total extracted plasma DNA was quantified by 2 methods for a major accuracy: spectrophotometric evaluation (NanoDrop® ND-1000, Celbio, Milan, Italy) and Quant-iT high sensitivity PicoGreen double-stranded DNA Assay Kit (Invitrogen) for maximum accuracy. AR aberrations [CN and somatic point mutations: 2105 T > A (p.L702H) and 2632 A > G (p.T878A) with a limit of detection of 1–2% using an input of 2 to 4 ng of DNA] were detected by multiplex ddPCR on a QX200 ddPCR system (Bio-Rad)^{12–14}.

For AR CN analyses, we used the AR gene and at least two different reference genes: *RNaseP*, *NSUN3*, *EIF2C1*, and *AP3B1* and *ZXDB* at Xp11.21 as a control gene.

Statistical analysis. The primary endpoint of this study was the association between circulating AR aberrations and CgA levels. The secondary endpoints were PFS/OS and PSA response rate (RR) (>50% PSA decline after 12 weeks of treatment) stratified by circulating AR status and CgA level.

Data were summarized by frequency for categorical variables and by median and range for continuous variables. The Wilcoxon rank sum test was performed to compare continuous variables and Chi-Square or Fisher's exact test were performed to compare categorical variables, as appropriate. The cut-offs for CgA in response to therapies were determined through ROC curve analysis, as previously reported^{28,29}. Consequently, all patients were subdivided into three groups: (1) normal serum CgA level < 120 ng/mL, (2) < 3-fold the UNV 120–360 ng/mL, and (3) > 3-fold the UNV > 360 ng/mL). In the exploratory sub-analysis, we also used 5-fold the UNV to evaluate a potentially more stringent cut-off.

PSA response was considered as a $\geq 50\%$ decline after a minimum of 12 weeks treatment confirmed by a second PSA test after a minimum of four weeks. PFS was calculated from the start of each therapy until the first date of progression, death from any cause, or last tumor evaluation. OS was calculated from the start of each therapy until death or last follow-up. Survival curves were estimated by the Kaplan-Meier method and were compared using the log-rank test. Univariate and multivariate Cox regression models were used to investigate potential predictors of PFS and OS and to estimate HR and their 95% CI. For these analyses, we included different clinically relevant factors as covariates for both cohorts (age, cell-free AR CN, CgA level, chemotherapy status, number of previous treatment lines, Gleason score, site of metastasis, and baseline serum LDH and PSA levels). We also conducted landmark analysis to reduce the potential for time-dependent confounding in treatment by assessing the impact of changes in serum CgA level from baseline to progression on survival outcome.

All P-values were two-sided and a $p < 0.05$ was considered as statistically significant. Statistical analyses were performed with SAS software version 9.4 (SAS Institute, Cary, NC, USA).

References

- Siegel, R. L., Miller, K. D. & Jemal, A. Cancer Statistics, 2017. *CA Cancer J Clin.* **67**, 7–30 (2017).
- Feldman, B. J. & Feldman, D. The development of androgen-independent prostate cancer. *Nat Rev Cancer* **1**, 34–45 (2001).
- Tannock, I. F. *et al.* Docetaxel plus prednisone or mitoxantrone plus prednisone for advanced prostate cancer. *N Engl J Med.* **351**, 1502–1512 (2004).
- de Bono, J. S. *et al.* Prednisone plus cabazitaxel or mitoxantrone for metastatic castration-resistant prostate cancer progressing after docetaxel treatment: a randomised open-label trial. *Lancet* **376**, 1147–1154 (2010).
- de Bono, J. S. *et al.* Abiraterone and increased survival in metastatic prostate cancer. *N Engl J Med.* **364**, 1995–2005 (2011).
- Ryan, C. J. *et al.* Abiraterone in metastatic prostate cancer without previous chemotherapy. *N Engl J Med.* **368**, 138–148 (2013).
- Scher, H. I. *et al.* Increased survival with enzalutamide in prostate cancer after chemotherapy. *N Engl J Med.* **367**, 1187–1197 (2012).
- Beer, T. M. *et al.* Enzalutamide in metastatic prostate cancer before chemotherapy. *N Engl J Med.* **371**, 424–433 (2014).
- Robinson, D. *et al.* Integrative clinical genomics of advanced prostate cancer. *Cell* **161**, 1215–1228 (2015).
- Carreira, S. *et al.* Tumor clone dynamics in lethal prostate cancer. *Sci Transl Med.* **6**, 254ra125 (2014).
- Kumar, A. *et al.* Substantial interindividual and limited intraindividual genomic diversity among tumors from men with metastatic prostate cancer. *Nat Med* **22**, 369–378 (2016).
- Romanel, A. *et al.* Plasma AR and abiraterone-resistant prostate cancer. *Sci Transl Med.* **7**, 312re10 (2015).
- Conteduca, V. *et al.* Androgen receptor gene status in plasma DNA associates with worse outcome on enzalutamide or abiraterone for castration-resistant prostate cancer: a multi-institution correlative biomarker study. *Ann Oncol.* **28**, 1508–1516 (2017).
- Salvi, S. *et al.* Circulating cell-free AR and CYP17A1 copy number variations may associate with outcome of metastatic castration-resistant prostate cancer patients treated with abiraterone. *Br J Cancer* **112**, 1717–1724 (2015).
- Salvi, S. *et al.* Circulating AR copy number and outcome to enzalutamide in docetaxel-treated metastatic castration-resistant prostate cancer. *Oncotarget* **7**, 37839–37845 (2016).
- Azad, A. A. *et al.* Androgen Receptor Gene Aberrations in Circulating Cell-Free DNA: Biomarkers of Therapeutic Resistance in Castration-Resistant Prostate Cancer. *Clin Cancer Res.* **22**, 2315–2324 (2015).
- Wyatt, A. W. *et al.* Genomic Alterations in Cell-Free DNA and Enzalutamide Resistance in Castration-Resistant Prostate Cancer. *JAMA Oncol.* **2**, 1598–1606 (2016).
- Balbas, M. D. *et al.* Overcoming mutation-based resistance to antiandrogens with rational drug design. *Elife* **2**, e00499 (2013).
- Antonarakis, E. S. *et al.* AR-V7 and resistance to enzalutamide and abiraterone in prostate cancer. *N Engl J Med.* **371**, 1028–1038 (2014).
- Scher, H. *et al.* Association of AR-V7 on Circulating Tumor Cells as a Treatment-Specific Biomarker With Outcomes and Survival in Castration-Resistant Prostate Cancer. *JAMA Oncol.* **2**, 1441–1449 (2016).
- Schwarzenbach, H. *et al.* Cell-free tumor DNA in blood plasma as a marker for circulating tumor cells in prostate cancer. *Clin Cancer Res* **15**, 1032–1038 (2009).
- Schwarzenbach, H., Hoon, D. S. & Pantel, K. Cell-free nucleic acids as biomarkers in cancer patients. *Nat Rev Cancer* **11**, 426–437 (2011).
- Conteduca, V., Aieta, M., Amadori, D. & De Giorgi, U. Neuroendocrine differentiation in prostate cancer: current and emerging therapy strategies. *Crit Rev Oncol Hematol.* **92**, 11–24 (2014).
- Beltran, H. *et al.* Molecular characterization of neuroendocrine prostate cancer and identification of new drug targets. *Cancer Discov.* **1**, 487–495 (2011).
- Aggarwal, R. *et al.* Neuroendocrine prostate cancer: subtypes, biology, and clinical outcomes. *J Natl Compr Canc Netw.* **12**, 719–726 (2014).
- Epstein, J. I. *et al.* Proposed morphologic classification of prostate cancer with neuroendocrine differentiation. *Am J Surg Pathol.* **38**, 756–767 (2014).
- Beltran, H. *et al.* Aggressive Variants of Castration Resistant Prostate Cancer. *Clin Cancer Res.* **20**, 2846–2850 (2014).
- Berruti, A. *et al.* Independent prognostic role of circulating chromogranin A in prostate cancer patients with hormone-refractory disease. *Endocr Relat Cancer* **12**, 109–117 (2005).
- Conteduca, V. *et al.* Chromogranin A is a potential prognostic marker in prostate cancer patients treated with enzalutamide. *Prostate* **74**, 1691–1696 (2014).
- Burgio, S. L. *et al.* Chromogranin A predicts outcome in prostate cancer patients treated with abiraterone. *Endocr Relat Cancer* **21**, 487–493 (2014).
- Beltran, H. *et al.* Divergent clonal evolution of castration-resistant neuroendocrine prostate cancer. *Nat Med.* **22**, 298–305 (2016).
- Savoy, R. M. & Ghosh, P. M. Linking inflammation and neuroendocrine differentiation: the role of macrophage migration inhibitory factor-mediated signaling in prostate cancer. *Endocr Relat Cancer* **20**, C1–4 (2013).
- Tawadros, T. *et al.* Release of macrophage migration inhibitory factor by neuroendocrine-differentiated LNCaP cells sustains the proliferation and survival of prostate cancer cells. *Endocr Relat Cancer* **20**, 137–149 (2013).
- Heck, M. M. *et al.* Chromogranin A and neurone-specific enolase serum levels as predictors of treatment outcome in patients with metastatic castration-resistant prostate cancer undergoing abiraterone therapy. *BJU Int.* **119**, 30–37 (2017).

35. Beltran, H. *et al.* Challenges in recognizing treatment-related neuroendocrine prostate cancer. *J Clin Oncol.* **30**, e386–389 (2012).
36. Aparicio, A. M. *et al.* Platinum-based chemotherapy for variant castrate-resistant prostate cancer. *Clin Cancer Res.* **19**, 3621–3630 (2013).
37. Scher, H. I. *et al.* Circulating tumor cell biomarker panel as an individual-level surrogate for survival in metastatic castration-resistant prostate cancer. *J Clin Oncol.* **33**, 1348–1355 (2015).
38. Annala, M. *et al.* Treatment Outcomes and Tumor Loss of Heterozygosity in Germline DNA Repair-deficient Prostate Cancer. *Eur Urol.* **72**, 34–42 (2017).
39. Ku, S. Y. *et al.* Rb1 and Trp53 cooperate to suppress prostate cancer lineage plasticity, metastasis, and antiandrogen resistance. *Science* **355**, 78–83 (2017).
40. Mu, P. *et al.* SOX2 promotes lineage plasticity and antiandrogen resistance in TP53- and RB1-deficient prostate cancer. *Science* **355**, 84–88 (2017).
41. Akamatsu, S. *et al.* The Placental Gene PEG10 Promotes Progression of Neuroendocrine Prostate Cancer. *Cell Rep.* **12**, 922–936 (2015).
42. Zhang, X. *et al.* SRRM4 Expression and the Loss of REST Activity May Promote the Emergence of the Neuroendocrine Phenotype in Castration-Resistant Prostate Cancer. *Clin Cancer Res.* **21**, 4698–4708 (2015).
43. Li, Y. *et al.* SRRM4 Drives Neuroendocrine Transdifferentiation of Prostate Adenocarcinoma Under Androgen Receptor Pathway Inhibition. *Eur Urol.* **71**, 68–78 (2017).
44. Bishop, J. L. *et al.* The Master Neural Transcription Factor BRN2 Is an Androgen Receptor-Suppressed Driver of Neuroendocrine Differentiation in Prostate Cancer. *Cancer Discov.* **7**, 54–71 (2017).
45. Aparicio, A. M. *et al.* Combined Tumor Suppressor Defects Characterize Clinically Defined Aggressive Variant Prostate Cancers. *Clin Cancer Res.* **22**, 1520–1530 (2016).
46. Taplin, M. E. *et al.* Prognostic significance of plasma chromogranin A levels in patients with hormone-refractory prostate cancer treated in Cancer and Leukemia Group B 9480 study. *Urology* **66**, 386–391 (2005).
47. Scher, H. I. *et al.* Design and end points of clinical trials for patients with progressive prostate cancer and castrate levels of testosterone: recommendations of the Prostate Cancer Clinical Trials Working Group. *J Clin Oncol.* **26**, 1148–1159 (2008).

Acknowledgements

The authors wish to thank Gráinne Tierney for editorial assistance.

Author Contributions

V.C. and U.D. designed the study. V.C., C.L., G.S., A.F., C.M., D.D., and S.L.B. were responsible for data collection. V.C., S.S., V.Ca., G.G. and D.W. performed the molecular experiments. V.C., H.B., G.A. and U.D. were responsible for the analysis and interpretation of data. E.S. performed the statistical analyses. H.B. and G.A. reviewed the manuscript for important intellectual content. V.C. and U.D. drafted the manuscript. All the authors approved the final version of the manuscript.

Additional Information

Supplementary information accompanies this paper at <https://doi.org/10.1038/s41598-018-33774-4>.

Competing Interests: V.C. and U.D.G. have received speaker honoraria or travel support from Astellas, Janssen-Cilag and Sanofi- Aventis. V.C. has received consulting fees from Bayer. G.A. has received commercial research grants from Janssen, Arno Therapeutics, and Innocrin Pharma, has received honoraria from the Speakers Bureaus of Janssen, Astellas, Sanofi-Aventis, and Roche/Ventana, has ownership interest (including patents) in The Institute of Cancer Research Rewards to Inventors, and is a consultant/advisory board member for Janssen-Cilag, Veridex, Bayer Healthcare, Roche/Ventana, Astellas, Medivation, Pfizer, Novartis, Millennium Pharma, Abbott Laboratories, and Essa Pharma. No potential conflicts of interest were disclosed by the other authors.

Publisher's note: Springer Nature remains neutral with regard to jurisdictional claims in published maps and institutional affiliations.



Open Access This article is licensed under a Creative Commons Attribution 4.0 International License, which permits use, sharing, adaptation, distribution and reproduction in any medium or format, as long as you give appropriate credit to the original author(s) and the source, provide a link to the Creative Commons license, and indicate if changes were made. The images or other third party material in this article are included in the article's Creative Commons license, unless indicated otherwise in a credit line to the material. If material is not included in the article's Creative Commons license and your intended use is not permitted by statutory regulation or exceeds the permitted use, you will need to obtain permission directly from the copyright holder. To view a copy of this license, visit <http://creativecommons.org/licenses/by/4.0/>.

© The Author(s) 2018