

## TITLE PAGE

### ***Manuscript Title***

Levofloxacin versus placebo for the prevention of tuberculosis disease in child contacts of multidrug-resistant tuberculosis: study protocol for a phase III cluster randomised controlled trial (TB-CHAMP)

### ***Authors***

James A Seddon <sup>1,2</sup>	james.seddon@imperial.ac.uk
Anthony J Garcia-Prats <sup>2</sup>	garciaprats@sun.ac.za
Susan E Purchase <sup>2</sup>	purchase@sun.ac.za
Muhammad Osman <sup>2</sup>	mosman@sun.ac.za
Anne-Marie Demers <sup>2</sup>	amd@sun.ac.za
Graema Hoddinott <sup>2</sup>	graemeh@sun.ac.za
Angela M Crook <sup>3</sup>	angela.crook@ucl.ac.uk
Ellen Owen-Powell <sup>3</sup>	ellen.owen-powell@ucl.ac.uk
Margaret J Thomason <sup>3</sup>	m.thomason@ucl.ac.uk
Anna Turkova <sup>3</sup>	a.turkova@ucl.ac.uk
Diana M Gibb <sup>3</sup>	diana.gibb@ucl.ac.uk
Lee Fairlie <sup>4</sup>	lfairlie@wrhi.ac.za
Neil Martinson <sup>5</sup>	martinson@phru.co.za
H Simon Schaaf <sup>2</sup>	hss@sun.ac.za
Anneke C Hesselning <sup>2</sup>	annekeh@sun.ac.za

### ***Affiliations***

<sup>1</sup>Centre for International Child Health, Imperial College London, London, United Kingdom

<sup>2</sup>Desmond Tutu TB Centre, Department of Paediatrics and Child Health, Faculty of Medicine and Health Sciences, Stellenbosch University, South Africa

<sup>3</sup>MRC Clinical Trials Unit at University College London, Institute of Clinical Trials and Methodology, London, United Kingdom

<sup>4</sup>Wits Reproductive Health & HIV Institute, University of the Witwatersrand, Johannesburg, South Africa

<sup>5</sup>Perinatal HIV Research Unit, University of Witwatersrand, Johannesburg, South Africa

## **Corresponding authors**

Corresponding author: James Seddon  
Email: james.seddon@imperial.ac.uk  
Telephone: +44 20 7594 3179  
Fax: +44 20 7594 3894  
Address: Centre for International Child Health, Department of  
Paediatrics, Imperial College London, Norfolk Place, London  
W2 1PG, United Kingdom

Alternate corresponding author: Anneke Hesselning  
Email: annekeh@sun.ac.za  
Telephone: +27 21 378 9177  
Fax: +27 21 938 9792  
Address: Desmond Tutu TB Centre, Department of Paediatrics and  
Child Health, Clinical Building, Room 0085, Faculty of Health  
Sciences, Stellenbosch University, PO Box 19063, Tygerberg,  
South Africa

## **ABSTRACT**

### **Background**

Multidrug-resistant (MDR) tuberculosis (TB) presents a challenge for global TB control. Treating individuals with MDR-TB infection to prevent progression to disease could be an effective public health strategy. Young children are at high risk of developing TB disease following infection and are commonly infected by an adult in their household. Identifying young children with household exposure to MDR-TB, and providing them with MDR-TB preventive therapy, could reduce the risk of disease progression. To date, no trials of MDR-TB preventive therapy have been completed and World Health Organization guidelines suggest close observation with no active treatment.

### **Methods**

The tuberculosis child multidrug-resistant preventive therapy (TB-CHAMP) trial is a phase III cluster randomised placebo-controlled trial to assess the efficacy of levofloxacin in young child contacts of MDR-TB cases. The trial is taking place at three sites in South Africa where adults with MDR-TB are identified. If a child under 5 years lives in their household, we assess the adult index case, screen all household members for TB disease, and evaluate any child under 5 years for trial eligibility. Eligible children are randomised by household to receive daily levofloxacin (15-20mg/kg) or matching placebo for six months. Children are closely monitored for disease development, drug tolerability and adverse events. The primary endpoint is incident TB disease or TB death by one year post recruitment. We will enrol 1556 children from approximately 778 households with an average of two eligible children per household. Recruitment will run for 18-24 months with all children followed for 18 months post treatment. Qualitative and health economic evaluations are embedded in the trial.

### **Discussion**

If the TB-CHAMP trial demonstrates that levofloxacin is effective in preventing TB disease in young children who have been exposed to MDR-TB, and that it is safe, well tolerated, acceptable and cost-effective, we would expect that that this intervention would rapidly transfer into policy.

### **Trial registration**

The trial was registered on 31 March 2016 (ISRCTN92634082; <http://www.isrctn.com/ISRCTN92634082>). The first household was randomised on 28 September 2017. The current protocol is Version 1.0.

**Keywords**

Tuberculosis

TB

Resistant

Trial

Prevention

Randomised

MDR

Placebo

Child

## BACKGROUND

Tuberculosis (TB) infection signifies that *Mycobacterium tuberculosis* (*M. tuberculosis*) is present in the body without causing symptoms, signs or radiological changes. TB disease, alternatively, is associated with symptoms, signs or radiological changes. Exposure to a person with TB disease can lead to infection with *M. tuberculosis*. Providing preventive therapy to exposed contacts is a viable strategy for reducing their risk of developing TB disease. This is especially so for young children and people living with HIV who, in the absence of appropriate preventive therapy, have a higher risk of disease progression following exposure to and infection with *M. tuberculosis*.<sup>1,2</sup>

The World Health Organization (WHO) estimated that 480,000 individuals developed multidrug-resistant (MDR)-TB disease globally in 2015.<sup>3</sup> MDR-TB is defined as TB disease caused by *M. tuberculosis* resistant to rifampicin and isoniazid. With the rollout of rapid molecular diagnostic tools including Xpert MTB/RIF, the number of diagnosed adult MDR-TB cases is increasing, with associated increasing numbers of child contacts identified. Modelling suggests that two million children are currently living with MDR-TB infection,<sup>4</sup> and of the children infected with *M. tuberculosis* who progress to disease, 90% will do so within 12 months.<sup>5</sup> While treatment outcomes for MDR-TB disease in children are considerably better than in adults<sup>6,7</sup> the treatment is complex, long, poorly tolerated and associated with frequent and significant adverse events, including ototoxicity, thyroid dysfunction, nausea and vomiting.<sup>6,8-10</sup> Child-friendly formulations of second-line TB drugs are limited and MDR-TB disease is expensive to treat<sup>11,12</sup> with prolonged hospitalisation being common for children. Prevention of MDR-TB disease in children is therefore of paramount importance. The United States Centers for Disease Control identified the need for a trial of MDR-TB preventive therapy in 1992.<sup>13</sup> Since then numerous international agencies have also recommended that such a trial should be a global health priority<sup>14-20</sup> but none have been completed to date, despite the global increase in MDR-TB.

There is strong evidence for the efficacy of isoniazid to reduce the risk of progression to TB disease in child and adult contacts of people with drug-susceptible TB.<sup>21,22</sup> Isoniazid monotherapy, given daily for six months, is therefore recommended by WHO in children aged <5 years and HIV-infected individuals, regardless of age, following exposure to infectious drug-susceptible TB.<sup>5,21-24</sup> However, WHO does not currently recommend any specific drug regimen for the contacts of people who are living with infectious MDR-TB. No randomised controlled trials have been completed to assess the efficacy of any regimen to prevent MDR-TB,<sup>25</sup> but a recent systematic review and meta-analysis of

multiple observational studies of MDR-TB preventive therapy concluded that although the results should be interpreted cautiously, a number of different regimens were associated with a reduction in the risk of subsequent TB disease and were cost-effective.<sup>26</sup> Our primary hypothesis is that levofloxacin, given daily for six months, will protect children exposed to MDR-TB from developing TB disease. We also hypothesise that this treatment will be well tolerated, safe and cost-effective.

## **METHODS**

### **Trial Design**

The tuberculosis child multidrug-resistant preventive therapy (TB-CHAMP) trial is a phase III cluster randomised placebo-controlled trial to assess the efficacy of levofloxacin to prevent TB disease in young (<5 years old) child contacts of people with MDR-TB disease.

### **Rationale for Trial Design**

*Target population:* This trial specifically targets child household contacts of MDR-TB cases less than five years for two reasons. First, children less than five years are at the highest risk of progressing to TB disease following infection.<sup>2</sup> Second, concordance of drug susceptibility test (DST) results is high between adults with MDR-TB and young child household contacts.<sup>27-29</sup> Young child household contacts are therefore most likely to benefit from MDR-TB preventive therapy. In addition, global policy and most national guidelines in high-burden settings recommend TB preventive therapy only for child contacts less than five years or for children living with HIV, following exposure to a person with drug-susceptible TB.<sup>30</sup> Although children over five years, living with HIV, would likely benefit from preventive therapy, the potential for reduced concordance with the identified source case, meant that the decision was made to restrict the trial to children under five years. Children under five years of age will be enrolled, regardless of tuberculin skin test (TST) or interferon-gamma release assay (IGRA) status. This is a deliberate decision to ensure programmatic relevance, since WHO and most National TB Programmes in high-burden TB settings do not require a positive test of TB infection prior to initiating preventive therapy in children who have been exposed to a person living with infectious drug-susceptible TB.<sup>31</sup>

*Choice of intervention regimen:* We considered a wide range of anti-TB drugs and drug combinations for the intervention arm of the trial, including first-line TB drugs, third generation fluoroquinolones, ethionamide, *para*-aminosalicylic acid (PAS), cycloserine, linezolid, clofazimine, and the novel drugs, bedaquiline and delamanid. We discounted drugs if: a) resistance was likely to be present to that

drug in MDR strains (the first-line drugs)<sup>32,33</sup>; b) the drug is likely to be poorly tolerated (ethionamide and PAS); c) the drug is associated with frequent or serious adverse events (cycloserine, linezolid, clofazimine); d) the drug is only weakly effective in killing *M. tuberculosis* (cycloserine, clofazimine, PAS); or e) appropriate formulations are unavailable or pharmacokinetic parameters are not well understood (delamanid and bedaquiline).

We therefore decided to use a third generation fluoroquinolone. These drugs have good efficacy against *M. tuberculosis in vitro* and are a core component of MDR-TB disease treatment regimens in both adults and children. Historically, clinicians had been hesitant to use fluoroquinolones in children following early animal research demonstrating cartilage damage in juvenile beagles.<sup>34</sup> However, a significant body of evidence has now demonstrated that drugs of this class are safe in children, even for long-term use.<sup>9,35-38</sup> Although moxifloxacin has good efficacy against metabolically active mycobacteria, levofloxacin may have better activity against metabolically inactive mycobacteria.<sup>39</sup> A mouse model which evaluated a number of novel TB infection treatment regimens in a latent infection model found that levofloxacin, moxifloxacin and isoniazid had similar efficacy against drug-susceptible strains of *M. tuberculosis*. Moxifloxacin is poorly tolerated in its current formulation due to its bitter taste and there are challenges in taste masking the active ingredient.<sup>40</sup> In addition, the large milligram size of the tablet (400mg) makes dosing challenging in children. Levofloxacin, in contrast, has a low tablet milligram dose, is licensed for children, has been widely used to treat paediatric MDR-TB disease and other bacterial infections, has known pharmacokinetic parameters when used at once-daily dosing,<sup>41</sup> does not interact with antiretroviral therapy drugs and appears to have low toxicity at currently used dosages.<sup>42</sup>

Some limited rationale exists for the additional use of isoniazid in a preventive therapy regimen, as it would be efficacious in preventing disease if the child had been exposed to a person with drug-susceptible TB in addition to the identified MDR-TB case. As young children are likely to be highly concordant with the identified source case, we anticipate few children acquiring drug-susceptible organisms. Isoniazid may also provide some efficacy against MDR strains with *inhA* promoter region mutations (typically conferring low-level resistance).<sup>43</sup> Globally, however, isoniazid resistance is more commonly caused by *katG* gene mutations,<sup>44</sup> in which isoniazid is less likely to be effective. For these reasons we elected not to include isoniazid in the intervention regimen. Paediatric pharmacokinetic and safety data for delamanid are becoming increasingly available and WHO now recommends delamanid for the treatment of MDR-TB disease in children as young as 6 years of age, but not yet to the youngest children, where treatment of infection is most needed.<sup>45</sup> We plan to

adapt the trial design to include delamanid to treat child contacts of fluoroquinolone-resistant MDR-TB, in an observational cohort, once pharmacokinetic data and formulations become available for the youngest children, dependent on additional funding.

In designing our intervention, we also considered that a simple regimen with one drug would likely be safer and would facilitate easier adherence for children. Although concerns have been raised that the use of a single drug could lead to the acquisition of secondary resistance in individuals who develop TB disease, this has not been shown to occur with the use of isoniazid as a single agent for TB preventive therapy in adult and child contacts of drug-susceptible TB.<sup>21,46</sup> We therefore decided to use levofloxacin alone.

*Choice of control regimen:* As outlined above, isoniazid may be active against *M. tuberculosis* with *inhA* promoter region mutations, as well as susceptible strains from exposures other than the identified index case. For these reasons, the PHOENix randomised controlled trial (A5300/IMPAACT2003), evaluating MDR-TB infection treatment with delamanid, chose isoniazid for their control arm. However, as also stated above, we anticipate high concordance between index case and child contact (with few children infected with drug-susceptible strains), as well as globally limited utility of isoniazid to treat MDR strains (due to the preponderance of *katG* gene mutations worldwide). In addition, the inclusion of isoniazid would increase the (albeit low) risk of harm that could arise through the use of a potentially hepatotoxic drug. Given the lack of evidence for the efficacy for isoniazid to treat MDR-TB infection and the lack of guidance on this topic, the protocol team, after broad scientific and ethical consideration, determined that it would be most appropriate to use no active drug in the control arm. This represents current WHO guidance.<sup>31</sup>

*Blinding:* We considered using an open-label design. However, the primary trial endpoint, incident TB, although standardised to as great a degree as possible, remains, to some extent, subjective. Many children who develop incident TB during the trial will be diagnosed clinically (i.e. not bacteriologically confirmed). The study team felt that with an open-label design there may be bias in the ascertainment of the endpoint. Children known not to be receiving any medication may be followed more closely and investigated more intensively than children known to be on treatment. In addition, there would be potential for bias in the ascertainment and reporting of adverse events, with families/caregivers potentially more likely to report adverse events if they knew their child was taking an active treatment. We therefore decided blinding and use of placebo would support unbiased assessment of endpoints and toxicity.



*Clustering:* As we planned to identify and treat children in their households, we felt that all children in the same household should be randomised to the same trial arm. Randomisation by household allows for ease of drug administration and protection from bias through accidental or deliberate switching of tablets (levofloxacin/placebo) between child household contacts. The statistical implications of the clustering are accounted for in the sample size estimation and analysis plan.

### **Context**

South Africa had an estimated TB incidence of 834 cases per 100,000 in 2015 with 3.5% of new cases and 7.1% of previously treated TB cases having either MDR-TB or rifampicin-resistant-TB.<sup>3</sup> The national HIV antenatal prevalence was 29.7% in 2013<sup>47</sup> and in 2015, of all TB patients with known HIV status, 57% were estimated to be HIV-infected.<sup>3</sup> The trial is being conducted at three sites in South Africa, all of which have extensive research experience in TB trials: a) Desmond Tutu TB Centre, Stellenbosch University, Cape Town; b) Perinatal HIV Research Unit, Wits Health Consortium, Klerksdorp, and c) Wits Reproductive Health and HIV Institute, Wits RHI Shandukani Research Centre, Johannesburg. Trial management, statistical design and analysis, and clinical event management is provided by the Medical Research Council Clinical Trials Unit (MRC CTU) at University College London. The trial began recruitment in September 2017 and recruitment is planned over 18-24 months. All children receive 24 weeks of therapy and are followed for 72 weeks post-treatment.

### **Trial Endpoints**

The primary endpoint is incident TB disease (bacteriologically confirmed or clinically diagnosed) or TB death by 48 weeks following randomisation. Incident TB and cause of death are adjudicated by an independent Endpoint Review Committee blinded to treatment allocation, based on available clinical, radiological, microbiological and molecular data using standard case definitions (see Table 1). Secondary endpoints are: a) All-cause mortality; b) Adverse events  $\geq$  grade 3 (possibly or likely associated with drug treatment) during 24 weeks of treatment; c) Percentage of levofloxacin or levofloxacin-placebo doses ingested and retained over 24 weeks of treatment; d) TB disease over 96 weeks; and e) Incidence of levofloxacin-resistant TB disease.

### **Trial Conduct**

*Index Case Identification:* Adult MDR-TB index cases are identified via routine National TB Programme TB clinics/hospitals or via other (e.g. laboratory-based) surveillance methods and assessed for eligibility as index cases (Table 2). Adults are approached at their local clinic/hospital or

at home to provide consent for collection of their TB episode data and a sputum sample, and for permission to conduct a home visit to enumerate all household members and eligible child contacts (Figure 1).

*Household assessment:* Following the evaluation of an adult MDR-TB index case, home visits are undertaken and the household contacts enumerated. Comprehensive infection control procedures are followed to protect staff. Screening is conducted in all household contacts to identify those with prevalent TB disease, to rule out additional individuals who may have drug-susceptible-TB, and to identify child household contacts who do not have prevalent TB disease and who are eligible for enrolment. Household characteristics and children's TB exposure are captured using a standard approach.<sup>48</sup> All household members  $\geq 5$  years with suggestive symptoms are referred for TB investigation and TB/HIV care as appropriate.

*Definition of household:* Households are defined using a standard inclusive definition.<sup>49</sup> A household contact is defined as a person who currently lives or lived in the same dwelling unit or plot of land and shares or shared the same housekeeping arrangements as the adult MDR-TB index case, and where there is reported exposure within 6 months prior to the index case starting MDR-TB treatment.

*Screening children for eligibility:* Written informed consent from caregivers is obtained to screen for study entry and eligibility (Table 2). Children  $< 5$  years who are identified as having been living in the same household as an enrolled adult MDR-TB index case at any point during the preceding 6 months are eligible, if the exposure has lasted more than two weeks. Anthropometric measurements are completed, TB symptoms and signs captured, and chest radiographs (CXR), HIV testing and IGRA (QuantiFERON-TB Gold Plus; Qiagen) done. Any children with suggestive symptoms or signs of intrathoracic or extrathoracic TB disease, or with concerning CXR features, are investigated for TB disease (including sampling for bacteriological testing) and are referred for TB care if TB is diagnosed. If any adult is identified with isoniazid- or rifampicin-susceptible TB in the household, then all children in the household become ineligible. Any child found to have been in contact with an index case who has isoniazid- or rifampicin-susceptible TB will be referred to the local clinic to access preventive therapy, as per WHO guidelines. Prevalent TB in child contacts is defined using standard international case definitions for paediatric TB in contact investigation studies (Table 1) which have been harmonised between three international MDR-TB preventive therapy protocols (TB-CHAMP, V-

QUIN and the ACTG/IMPAACT PHOENix trials). CXR findings suggestive of intrathoracic (pulmonary) TB are defined in Table 3.

*Child Enrolment:* Carers/legal guardians of child household contacts are approached and consent obtained for screening and, if eligibility is confirmed, subsequent enrolment.

*Randomisation:* All eligible contacts in a household consenting to participate are allocated to the same study arm, but participation of all eligible child household contacts is not required for the household to participate. Enrolment of children and randomisation of households into the study is via a centralised web-based system to maintain allocation concealment. Randomisation is stratified by site, and households are randomised 1:1 to either levofloxacin or placebo. The randomisation lists are prepared by an individual that is not involved in the day-to-day running of the trial.

*Interventions:* Medications are dosed by pragmatic weight-bands (Table 4). Children randomised to the intervention arm receive levofloxacin at a target dose of 15-20mg/kg per day once-daily for 24 weeks. Although this is the recommended target dose,<sup>50</sup> we acknowledge that higher dosages may be needed to achieve the serum concentrations seen in adults when dosed with 750mg once daily.<sup>51</sup> In addition, as can be seen in Table 4, the use of weight-bands leads to some over-dosing and some under-dosing for children at the boundaries of each weight-band. Children randomised to the control arm receive placebo formulated to look and taste identical to the 250mg (or 100mg) levofloxacin dispersible tablet. Drug (and placebo) is being supplied initially as 250mg tablets. During the course of the trial a 100mg dispersible tablet (and placebo) is expected to become available for use in the lower weight-bands.

*Follow-up:* Children are seen at 4, 8, 12, 16, 24, 36, 48, 72 and 96 weeks for study visits, and at any time that caregivers feel that the child may have developed TB disease or they, or the study team, have other concerns.

### **Data collection**

The data collected, investigations undertaken and time points at which these are carried out, from the index case, household and child, are indicated in Figure 2. The TB treatment register at the treating clinic and National Health Laboratory Service database are reviewed by the study team to collect data on the index case. A sputum sample is also collected from the index case for culture, DST and genotyping. At follow-up study visits of the child contacts, anthropometric measurements are

recorded and caregivers are asked questions regarding the child. Stool is collected at selected sites for non-mycobacterial microbiology and microbiome analysis. Any child with symptoms or signs suggestive of TB disease, a CXR with features consistent with TB disease, or a CXR with persistent abnormalities despite a course of antibiotics, will be evaluated for TB disease by a clinician and have two respiratory samples (expectorated/induced sputum or gastric aspirate) collected for smear microscopy, GeneXpert MTB/RIF and culture. If the culture is positive, the sample undergoes DST and genotyping.

### **Adverse events**

Safety assessments are conducted at each visit during the 24 weeks on treatment and include evaluation of symptoms, signs and laboratory investigations. At every study visit (and at unscheduled visits) a symptom checklist prompts for symptoms relating to possible drug toxicities. All symptomatic patients are evaluated by the study doctor and discussed with the site Principal Investigator. Safety laboratory investigations are performed at baseline and at 8, 16 and 24 weeks and are also performed at unscheduled visits if clinically indicated. Adverse events (clinical and laboratory) are graded using the 2017 Division of AIDS toxicity grading scale.<sup>52</sup> All adverse events are recorded in the child's notes and reported to the MRC CTU and ethics committees as required within agreed timescales. There are no known drug-drug interactions between levofloxacin and antiretroviral drugs used to treat children living with HIV,<sup>42</sup> and a recent evaluation of long-term levofloxacin use in children with MDR-TB found no evidence of cardiotoxicity or QTc prolongation.<sup>53</sup>

### **Statistical considerations**

For sample size determination, we have assumed a two-sided superiority test (alpha of 0.05), assuming that TB incidence in the control arm is 7%.<sup>2</sup> We have powered the trial to detect a 50% reduction of the TB incidence in the levofloxacin arm. We have conservatively assumed 10% loss to follow-up,<sup>21,35,54</sup> two children per household<sup>54</sup> and an intra-class correlation within households (a measure of how similar the households are to each other) of 0.1. Other intra-class correlation values and the impact on sample size are shown in Table 5. Considering these assumptions, we will need to enrol 1556 children (778 per arm) to achieve 80% power to detect differences between the two arms (Figure 3). There will be one formal interim analysis using Haybittle-Peto-type boundaries,<sup>55,56</sup> which will occur after accrual of at least half the targeted number of households or when half the target number of household contacts (whichever is sooner) have been recruited and when these recruited child participants have been followed for at least 6 months. Primary analysis is intention to treat.

## **Ethical considerations**

*Consent:* Written informed consent is obtained from the adult MDR-TB index case to approach the household and the parent/legal guardian of the eligible child for their screening and possible subsequent enrolment into the trial. The consent process is conducted in the home language of the person from whom consent is requested and that individual is given a written information sheet, also in their home language, explaining the study. Consent is obtained before any trial-related procedures are performed.

*Registration and ethical approval:* The trial has been registered, and details can be viewed at: <http://www.isrctn.com/ISRCTN92634082>. The trial has been approved by the Stellenbosch University Human Research Ethics Committee (M16/02/009), the University of the Witwatersrand Ethics Committee (160409) and the Medicines Control Council, South Africa.

*Oversight:* The trial is run primarily by the Trial Management Group and is overseen by the Trial Steering Committee. An Independent Data Monitoring Committee sees confidential, unblinded data for the trial and advises the Trial Steering Committee on whether the trial needs to be prematurely closed. An Endpoint Review Committee, blinded to treatment arm, evaluates clinical trial endpoints and causes of death.

## **Sub-studies**

*Social science:* To describe a) the perceptions that patients, families and health workers have about TB care and prevention, as well as the TB-CHAMP trial; b) how the study intervention is implemented in the context of local health systems; and c) the families' experiences of the trial. This involves key informant interviews with health service personnel, mixed-methods research around implementation and a nested qualitative cohort.

*Health Economic Research:* Costing and cost-effectiveness of the trial interventions for both families and health systems at the three collaborating sites will be evaluated. This involves collecting data on costs associated with the interventions as well as costs associated with children developing MDR-TB disease. The primary outcome is the incremental cost-effectiveness ratio of levofloxacin against placebo.

*Drug studies:* Palatability and acceptability of the new child-friendly dispersible 100mg levofloxacin formulation has been evaluated in 24 children prior to trial start-up as part of a lead-in pharmacokinetic sub-study. Bioavailability is also being evaluated in healthy adult volunteers. Ongoing evaluation of the 250mg formulation (and 100mg formulation when it becomes available) will take place throughout the trial using questionnaires and qualitative research.

*Other sub-studies:* The trial provides a unique platform to conduct a number of basic science studies. Given that children in the placebo arm are monitored closely without treatment (a situation that would not be possible following exposure to drug-susceptible TB, given the proven efficacy of isoniazid preventive therapy), this trial permits evaluation of correlates of risk in MDR-TB-exposed children, using RNA transcriptomic approaches. Blood samples are taken at the time of routine, trial-related blood draws and stored for subsequent analysis. Baseline and serial stool samples are taken from children at selected sites to evaluate the impact of levofloxacin on the microbiome of children, and its effect on the development of levofloxacin resistance in non-mycobacterial bacteria. The trial provides an opportunity to use whole genome sequencing to study the molecular epidemiology of *M. tuberculosis*, the impact of drug resistance on transmission and evaluate concordance between index cases and household contacts.

## **DISCUSSION**

Should TB-CHAMP determine that levofloxacin is effective in preventing the development of TB disease in young children who have been exposed to MDR-TB, and that it is safe and well tolerated, we would expect that this intervention would rapidly translate into policy. We will continue to inform WHO and other policy groups about the trial status and findings. Although the study is being conducted in only one country, the diverse nature of the trial sites, with varied host genetics, mycobacterial strain types and varying prevalence of drug resistance, epidemiological characteristics, health systems and cultural practices, would mean that the results are likely to be generalisable to children more broadly.

## **TRIAL STATUS**

Recruitment to the trial started in September 2017. Recruitment will continue until the target number of children has been recruited. This is anticipated to take 18-24 months. The current protocol is Version 1.0.

## LIST OF ABBREVIATIONS

CXR	Chest radiographs
DST	Drug susceptibility test
IGRA	Interferon-gamma release assay
MRC CTU	Medical Research Council Clinical Trials Unit
MDR	Multidrug-resistant
<i>M. tuberculosis</i>	<i>Mycobacterium tuberculosis</i>
PAS	<i>Para</i> -aminosalicylic acid
TB	Tuberculosis
TB-CHAMP	Tuberculosis child multidrug-resistant preventive therapy trial
TST	Tuberculin skin test
WHO	World Health Organization

## DECLARATIONS

*Ethics approval and consent to participate:* The trial has been approved by the Stellenbosch University Human Research Ethics Committee (M16/02/009), and the University of the Witwatersrand Ethics Committee (160409).

*Availability of data and material:* The datasets generated and/or analysed during the current study will be available from the corresponding author on reasonable request.

*Competing interests:* None declared

*Funding and Sponsorship:* TB-CHAMP is funded by Joint Global Health Trials Scheme of the Department for International Development, UK (DFID), the Wellcome Trust and the Medical Research Council (MRC UK), Grant number MR/M007340/1 and the South African Medical Research Council (SA MRC) Strategic Health Innovation Partnership Award (SHIP). The trial is sponsored by Stellenbosch University, PO Box 241, Cape Town 8000, South Africa. The funders and sponsor will not play any role in: study design; data collection, data management, data analysis, data interpretation; writing reports; the decision to submit reports for publication, and will not have any authority over any of these activities.

*Drug supply:* Levofloxacin and matching placebo are manufactured by Macleods, India.

*Authors' contributions:* JAS contributed to the development of the Trial Protocol. He wrote the first draft of the article and approved the final version. AJG-P contributed to the development of the Trial Protocol. He gave critical input to the article and approved the final version. SEP contributed to the development of the Trial Protocol. She gave critical input to the article and approved the final version. MO contributed to the development of the Trial Protocol. He gave critical input to the article and approved the final version. A-MD contributed to the development of the Trial Protocol. She gave critical input to the article and approved the final version. GH contributed to the development of the Trial Protocol. He gave critical input to the article and approved the final version. AMC contributed to the development of the Trial Protocol. She gave critical input to the article and approved the final version. EO-P contributed to the development of the Trial Protocol. She gave critical input to the article and approved the final version. MJT contributed to the development of the Trial Protocol. She gave critical input to the article and approved the final



version. AT contributed to the development of the Trial Protocol. She gave critical input to the article and approved the final version. DMG contributed to the development of the Trial Protocol. She gave critical input to the article and approved the final version. LF contributed to the development of the Trial Protocol. She gave critical input to the article and approved the final version. NM contributed to the development of the Trial Protocol. He gave critical input to the article and approved the final version. HSS contributed to the development of the Trial Protocol. He gave critical input to the article and approved the final version. ACH contributed to the development of the Trial Protocol. She gave critical input to the article and approved the final version.

*Acknowledgements:* The authors would like to acknowledge all trial staff, as well as all families included in the trial and their communities.

**Table 1: Clinical and radiological/laboratory criteria required to make a diagnosis of confirmed, probable or possible TB in child TB contacts < 5 years of age. Developed in collaboration with the trial teams from V-QUIN and PHOENIX**

Clinical (A)	Radiological/laboratory (B)
<ul style="list-style-type: none"> <li>• Cough or cervical neck mass (<math>\geq 2 \times 2 \text{cm}</math>) for &gt;2 weeks despite a course of antibiotics</li> <li>• Fever or lethargy for &gt;1 week despite a course of antibiotics</li> <li>• Documented failure to thrive i.e. flattening of weight curve crossing centiles, documented weight loss e.g. &gt;5%, moderate or severe malnutrition [Weight-for-height Z score &lt;-2] in relation to previous measures</li> <li>• Classic gibbus suggestive of spinal TB</li> <li>• Depressed level of consciousness, new onset seizures or focal neurological signs suggestive of TB meningitis</li> </ul>	<ul style="list-style-type: none"> <li>• AFBs or caseating granulomas on microscopy (not confirmed by culture or Xpert to be TB)</li> <li>• CXR suggestive of TB (concurrence between two blinded CXR reviewers, with conflicts resolved by third reviewer) despite a course of antibiotics.</li> <li>• CSF suggestive of TB (white cell count &lt;1000 cells, protein &gt;1g/dl, glucose &lt;2.2mmol/l)</li> <li>• Pleural aspirate or ascitic tap with WBC counts, protein, and glucose levels suggestive of TB, consider ADA</li> <li>• CT brain suggestive of CNS TB</li> </ul>

- Confirmed TB: Positive *M. tuberculosis* + at least one of either A or B
- Positive *M. tuberculosis*: (adapted from Graham et al.<sup>57</sup>): At least 1 positive culture (with confirmed *M. tuberculosis* speciation) or 1 positive WHO-endorsed NAAT (eg, XpertMTB/RIF assay) from respiratory samples (expectorated/induced sputum or gastric aspirate) or other samples such as fine needle aspiration biopsy or other fluid or tissue samples
- Probable TB: At least one of A and at least one of B
- Possible TB: At least one of A or B (but not both) and a decision to treat
- Not TB: The absence of clinical, radiological, or laboratory evidence that meets any of the above criteria
- TB infection: Immunological evidence of infection with *M. tuberculosis* (TST/IGRA) plus classification as “Not TB.”
- Indeterminate/unclassifiable TB status: Documented results of the diagnostic evaluation (suspicious symptoms, chest radiograph, laboratory tests) are insufficient for the End point Review Panel to reach determination
- Death: Mortality will be classified as death from any cause. TB deaths will be verified using available data (including death certificate, post mortem, hospital and other clinical information or other as available). The End-point Review Committee will review and determine the cause of death, if there are any deaths, in all children participating in the trial. Death occurring during a TB episode will be classified as TB death, unless there is clear evidence that the death is unrelated (e.g. motor vehicle accident)

TB: tuberculosis; AFBs: acid-fast bacilli; CXR: chest radiograph; ADA: adenosine deaminase; CNS: central nervous system; CSF: cerebrospinal fluid; CT: computerised tomography; IGRA: interferon-gamma release assay; TST: tuberculin skin test; WBC: white blood count; WHO: World Health Organization; NAAT: nucleic acid amplification test

**Table 2: Inclusions and exclusion criteria for adult index cases and child trial participants**

Adult Index Case Inclusion Criteria	Child Participant Inclusion Criteria	Child Participant Exclusion Criteria
<ol style="list-style-type: none"> <li>1. Age ≥18 years</li> <li>2. Bacteriologically confirmed pulmonary TB diagnosed from a sputum sample within the preceding 6 months</li> <li>3. Genotypic and/or phenotypic resistance to isoniazid and rifampicin*</li> <li>4. Written informed consent to provide routine TB episode data</li> <li>5. At least 1 child household contact below 5 years of age reported to have been residing in the same household as the adult index case in the previous 6 months</li> </ol>	<ol style="list-style-type: none"> <li>1. Child &lt;5 years who is a household contact of an enrolled adult MDR-TB index case diagnosed during the previous 6 months**</li> <li>2. Primary residence in the household of the adult MDR-TB index case</li> <li>3. Consent from the parent or legal guardian for the child for HIV testing***</li> <li>4. Consent obtained from the parent or legal guardian for the child to be enrolled in the study</li> </ol>	<ol style="list-style-type: none"> <li>1. TB disease at enrolment</li> <li>2. Currently on isoniazid or a fluoroquinolone**** for ≥14 days</li> <li>3. Treated for TB in the previous 12 months</li> <li>4. Known concurrent exposure to an isoniazid-susceptible (including rifampicin-mono-resistant) index case*****</li> <li>5. Children with myasthenia gravis or Guillain-Barré syndrome</li> </ol>

\*If only tested by Xpert MTB/RIF or other approved molecular tests, the index case can be included if rifampicin-resistant, without other confirmed DST. Rates of rifampicin-resistant, isoniazid-susceptible TB are very low in this context.<sup>58</sup> Samples found to be rifampicin-resistant will subsequently be confirmed by other molecular testing and/or by phenotypic DST.

\*\* Children <5 years who are identified as having been living in the same household as an enrolled adult MDR-TB index case at any point during the preceding 6 months are eligible, if the exposure has lasted more than two weeks.

\*\*\*HIV-infected and uninfected children will be included

\*\*\*\*Levofloxacin, moxifloxacin, ofloxacin or ciprofloxacin

\*\*\*\*\*Any child found to have been in contact with an index case who has isoniazid- or rifampicin-susceptible TB will be referred to the local clinic to access preventive therapy, as per WHO guidelines

**Table 3: Chest radiograph features characteristic (“typical or highly suggestive chest radiograph findings” of TB in children <5 years of age, by disease severity status)**

Non-severe disease	Severe disease
<ul style="list-style-type: none"> <li>• Uncomplicated LN disease - hilar or mediastinal nodes, nodes with unilateral airway narrowing, nodes with single lobe bronchopneumonia, nodes with segmental opacification (&lt;1 lobe)</li> <li>• Isolated Ghon focus</li> <li>• Simple pleural effusion</li> </ul>	<ul style="list-style-type: none"> <li>• Complicated LN disease (Airway compression with hyperinflation or collapse or bilateral airway compression)</li> <li>• Expansile pneumonia (involving ≥1 lobe)</li> <li>• Ghon focus with cavitation</li> <li>• Miliary TB</li> <li>• Complicated Pleural effusion (alveolar disease with effusion, pneumothorax, loculated pyopneumothorax with air-fluid level), loculated pleural effusion</li> <li>• Adult-type cavitary disease</li> <li>• Bronchopneumonic consolidation with or without cavities or visible lymph nodes</li> <li>• Suspected pericardial effusion (cardiac enlargement)</li> </ul>

LN: lymph node; TB: tuberculosis

**Table 4: Weight bands for levofloxacin (100 mg and 250 mg tablets) and resulting drug exposures**

Weight bands (kg)		Number of Tablets of Levofloxacin 100	Number of Tablets of Levofloxacin 250	Range of resulting dosages (mg/kg)			
				Levofloxacin 100		Levofloxacin 250	
				min	max	min	max
3	4.9	0.5	0.25	10	17	13	21
5	6.9	1	0.5	14	20	18	25
7	9.9	1.5	0.75	15	21	19	27
10	11.9	2	1	17	20	21	25
12	15.9	2.5	1	16	21	16	21
16	19.9	3	1.5	15	19	19	23
20	24.9		1.5			15	19
25	29.9		2			17	20

Target dosage for levofloxacin is between 15mg/kg and 20mg/kg

Children in the placebo arm will receive the same number of tablets based on their weight band

**Table 5: Total number of households (children)\* required for 80% and 90% power for varying control arm event rates and Intracluster correlation coefficients**

Power	Percentage of contacts who develop TB disease by 48 weeks (control arm)	Intracluster correlation coefficients		
		0.05	0.1	0.15
80%	5%	1056 (2122)	1108 (2216)	1158 (2316)
	7%	742 (1484)	<b>778 (1556)</b>	814 (1628)
	10%	508 (1016)	532 (1064)	556 (1112)
90%	5%	1414 (2828)	1480 (2960)	1548 (3096)
	7%	994 (1988)	1040 (2080)	1088 (2174)
	10%	678 (1356)	710 (1420)	742 (1484)

\*Assumes 2 contacts per household, 10% loss to follow-up, 2-sided 5% significance level test and a 50% risk reduction in the intervention arm

## FIGURES

**Figure 1: The series of activities conducted by the study team to identify eligible child contacts of multidrug-resistant tuberculosis index cases**

**Figure 2: Schedule of Evaluations**

### Footnotes:

SCR: Screening; BL: baseline – at randomisation; U/S: unscheduled; TB: tuberculosis; ALT: alanine aminotransferase; BR: bilirubin; DST: drug susceptibility test; FBC: full blood count; IGRA: interferon-gamma release assay; WHO: World Health Organization

\*If intercurrent exposure to a isoniazid- or rifampicin susceptible-TB case, preventive therapy will be offered

\*\*At selected sites only

#based on clinical indication only – TB symptoms at baseline, or at follow-up: new or persistent symptoms, or CXR changes at any time including end point evaluation. HIV testing at 48 weeks will be repeated in HIV-negative participants. If the HIV status is already known to be positive at screening, the CD4 count and HIV viral load should be completed at baseline in HIV-infected children. HIV viral load is standard of care in HIV-infected children

**Figure 3: Schema of the trial documenting numbers of households and individuals to be recruited and numbers in each trial arm**

Figure 1

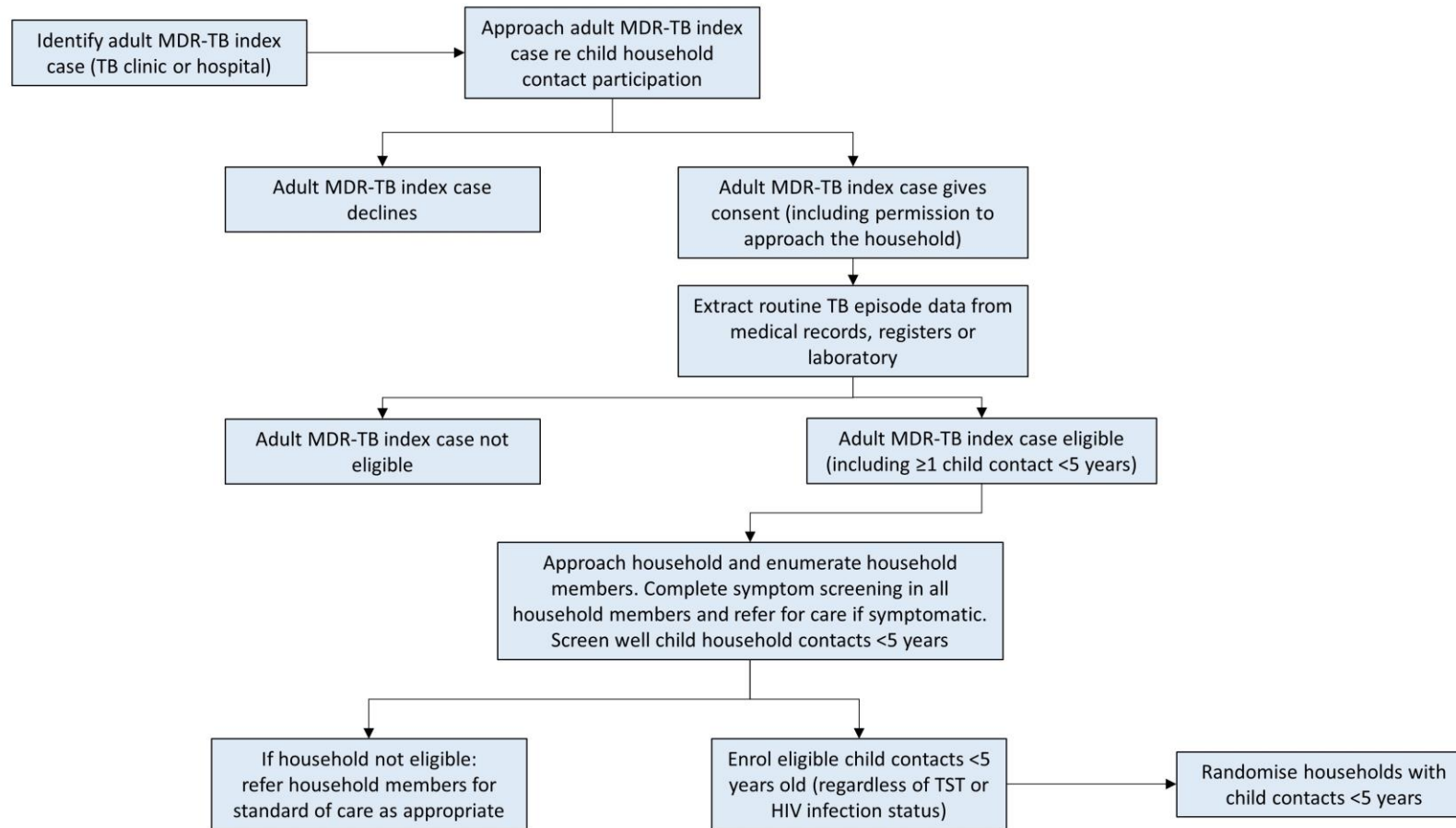
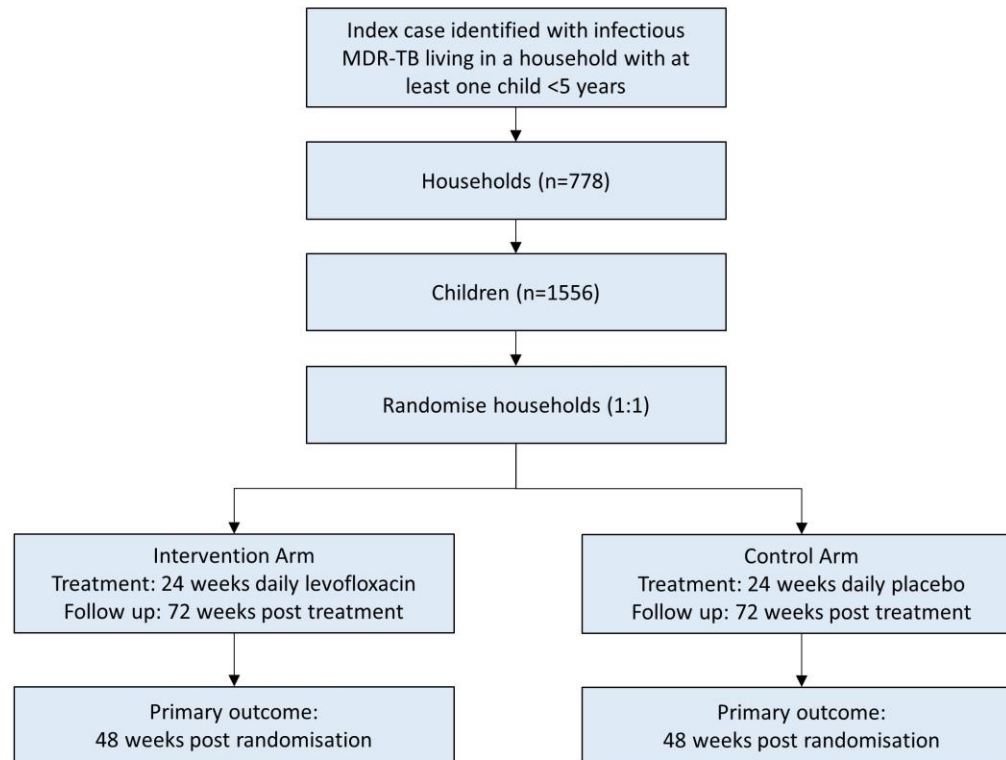




Figure 2

	SCR	BL 0	4	8	12	16	24	36	48	72	96	U/S; Early exit
<b>All children</b>												
Symptom screening	•	•	•	•	•	•	•	•	•	•	•	•
Medical history	•	•	•	•	•	•	•	•	•	•	•	•
Clinical examination	•	•	•	•	•	•	•	•	•	•	•	•
Chest radiograph	•	#	#	#	•	#	#	#	•	#	#	#
Intercurrent TB exposure*			•	•	•	•	•	•	•	•	•	•
Bacteriological investigation, DST, genotyping (child participants)	#	#	#	#	#	#	#	#	#	#	#	#
Bacteriological investigation, DST, genotyping (adult index case)	•											#
Historical TB microbiology data (adult index case)	•											
Anthropometrics (height/length & weight, mid-upper arm circumference)	•	•	•	•	•	•	•	•	•	•	•	#
IGRA	•						•					
HIV status		•							•			
EQ-5D-Y		•			•		•				•	
Solicited adverse events			•	•	•	•	•					•
Adherence and acceptability			•	•	•	•	•					#
Outcome (incident TB, mortality)			•	•	•	•	•	•	•	•	•	•
TB register surveillance									•		•	
Haematology (FBC, differential,)		•		•		•	•					#
Liver function tests (ALT, BR)		•		•		•	•					#
<b>HIV-infected children</b>												
WHO staging		•							•			
CD4 count		•					•		•		•	
HIV viral load		•					•		•		•	#
<b>Sub studies (selected sites only)</b>												
Serum and whole blood (biomarker substudy)		•		•		•	•		•			•
Stool (microbiome and resistant pathogen substudy)**		•		•		•	•		•			•

Figure 3



## REFERENCES

1. Hesselning AC, Cotton MF, Jennings T, et al. High incidence of tuberculosis among HIV-infected infants: evidence from a South African population-based study highlights the need for improved tuberculosis control strategies. *Clin Infect Dis*. 2009;48(1):108-114.
2. Marais BJ, Gie RP, Schaaf HS, et al. The natural history of childhood intra-thoracic tuberculosis: a critical review of literature from the pre-chemotherapy era. *Int J Tuberc Lung Dis*. 2004;8(4):392-402.
3. World Health Organization, Geneva, Switzerland. Global Tuberculosis Report. WHO/HTM/TB/2016.13. Available at: <http://apps.who.int/iris/bitstream/10665/250441/1/9789241565394-eng.pdf?ua=1> (accessed 14 November 2016). 2016.
4. Dodd PJ, Sismanidis C, Seddon JA. Global burden of drug-resistant tuberculosis in children: a mathematical modelling study. *Lancet Infect Dis*. 2016;16(10):1193-1201.
5. Ferebee SH. Controlled chemoprophylaxis trials in tuberculosis. A general review. *Bibl Tuberc*. 1970;26:28-106.
6. Ettehad D, Schaaf HS, Seddon JA, Cooke GS, Ford N. Treatment outcomes for children with multidrug-resistant tuberculosis: a systematic review and meta-analysis. *Lancet Infect Dis*. 2012;12(6):449-456.
7. Ahuja SD, Ashkin D, Avendano M, et al. Multidrug resistant pulmonary tuberculosis treatment regimens and patient outcomes: an individual patient data meta-analysis of 9,153 patients. *PLoS Med*. 2012;9(8):e1001300.
8. Thee S, Zollner EW, Willemse M, Hesselning AC, Magdorf K, Schaaf HS. Abnormal thyroid function tests in children on ethionamide treatment (short communication). *Int J Tuberc Lung Dis*. 2011;15(9):1191-1193.
9. Seddon JA, Hesselning AC, Godfrey-Faussett P, Schaaf HS. High treatment success in children treated for multidrug-resistant tuberculosis: an observational cohort study. *Thorax*. 2013.
10. Seddon JA, Thee S, Jacobs K, Ebrahim A, Hesselning AC, Schaaf HS. Hearing loss in children treated for multidrug-resistant tuberculosis. *J Infect*. 2013;66(4):320-329.
11. Resch SC, Salomon JA, Murray M, Weinstein MC. Cost-effectiveness of treating multidrug-resistant tuberculosis. *PLoS Med*. 2006;3(7):e241.
12. Tupasi TE, Gupta R, Quelapio MI, et al. Feasibility and cost-effectiveness of treating multidrug-resistant tuberculosis: a cohort study in the Philippines. *PLoS Med*. 2006;3(9):e352.
13. Centres for Disease Control, Atlanta, Georgia, USA. Management of persons exposed to multidrug-resistant tuberculosis. *MMWR Recomm Rep*. 1992;41(RR-11):61-71.
14. European Centre for Disease Prevention and Control. Management of contacts of MDR TB and XDR TB patients. Available at: <http://ecdc.europa.eu/en/publications/Publications/201203-Guidance-MDR-TB-contacts.pdf> (accessed July 2013). 2012.
15. Graham SM, Gie RP, Schaaf HS, Coulter JB, Espinal MA, Beyers N. Childhood tuberculosis: clinical research needs. *Int J Tuberc Lung Dis*. 2004;8(5):648-657.
16. Cobelens FG, Haldal E, Kimerling ME, et al. Scaling up programmatic management of drug-resistant tuberculosis: a prioritized research agenda. *PLoS medicine*. 2008;5(7):e150.
17. Marais BJ, Gie RP, Schaaf HS, Beyers N, Donald PR, Starke JR. Childhood pulmonary tuberculosis: old wisdom and new challenges. *American journal of respiratory and critical care medicine*. 2006;173(10):1078-1090.
18. Scano F, Vitoria M, Burman W, Harries AD, Gilks CF, Havlir D. Management of HIV-infected patients with MDR- and XDR-TB in resource-limited settings. *Int J Tuberc Lung Dis*. 2008;12(12):1370-1375.
19. RESIST-TB. Report on the RESIST-TB Protocol Workshop, 5-6 October. Available at: [http://www.resisttb.org/uploads/RESIST-TB\\_Protocol\\_Workshop\\_summary.pdf](http://www.resisttb.org/uploads/RESIST-TB_Protocol_Workshop_summary.pdf) (accessed 29-5-11). 2009.
20. World Health Organization, Geneva, Switzerland. Report of the Technical Consultation on the Programmatic Management of Latent Tuberculosis Infection. Available at: <http://apps.who.int/iris/bitstream/10665/259380/1/WHO-HTM-TB-2017.27-eng.pdf> (accessed 15 Dec 2017). 2017.
21. Zar HJ, Cotton MF, Strauss S, et al. Effect of isoniazid prophylaxis on mortality and incidence of tuberculosis in children with HIV: randomised controlled trial. *BMJ*. 2007;334(7585):136.
22. Smieja MJ, Marchetti CA, Cook DJ, Smaill FM. Isoniazid for preventing tuberculosis in non-HIV infected persons. *Cochrane Database Syst Rev*. 2000(2):CD001363.
23. CDC/ATA/IDSA. Targeted tuberculin testing and treatment of latent tuberculosis infection. This official statement of the American Thoracic Society was adopted by the ATS Board of Directors, July

1999. This is a Joint Statement of the American Thoracic Society (ATS) and the Centers for Disease Control and Prevention (CDC). This statement was endorsed by the Council of the Infectious Diseases Society of America. (IDSA), September 1999, and the sections of this statement. *Am J Respir Crit Care Med.* 2000;161(4 Pt 2):S221-247.
24. Gray DM, Zar H, Cotton M. Impact of tuberculosis preventive therapy on tuberculosis and mortality in HIV-infected children. *Cochrane Database Syst Rev.* 2009(1):CD006418.
  25. Fraser A, Paul M, Attamna A, Leibovici L. Drugs for preventing tuberculosis in people at risk of multiple-drug-resistant pulmonary tuberculosis. *Cochrane Database Syst Rev.* 2006(2):CD005435.
  26. Marks SM, Mase SR, Morris SB. Systematic Review, Meta-analysis, and Cost-effectiveness of Treatment of Latent Tuberculosis to Reduce Progression to Multidrug-Resistant Tuberculosis. *Clin Infect Dis.* 2017;64(12):1670-1677.
  27. Schaaf HS, Van Rie A, Gie RP, et al. Transmission of multidrug-resistant tuberculosis. *Pediatr Infect Dis J.* 2000;19(8):695-699.
  28. Parr JB, Mitnick CD, Atwood SS, Chalco K, Bayona J, Becerra MC. Concordance of resistance profiles in households of patients with multidrug-resistant tuberculosis. *Clin Infect Dis.* 2014;58(3):392-395.
  29. Shah NS, Yuen CM, Heo M, Tolman AW, Becerra MC. Yield of contact investigations in households of patients with drug-resistant tuberculosis: systematic review and meta-analysis. *Clin Infect Dis.* 2014;58(3):381-391.
  30. World Health Organization, Geneva, Switzerland. Guidance for national tuberculosis programme on the management of tuberculosis in children (Second edition). Available at: [http://apps.who.int/iris/bitstream/10665/112360/1/9789241548748\\_eng.pdf?ua=1](http://apps.who.int/iris/bitstream/10665/112360/1/9789241548748_eng.pdf?ua=1) (accessed 11 June 2018). 2014.
  31. World Health Organization, Geneva, Switzerland. Guidelines on the management of latent tuberculosis infection (WHO/HTM/TB/2015.01). Available at: [http://www.who.int/tb/publications/tbi\\_document\\_page/en/](http://www.who.int/tb/publications/tbi_document_page/en/) (accessed 11 June 2018). 2015.
  32. Mphahlele M, Syre H, Valvatne H, et al. Pyrazinamide resistance among South African multidrug-resistant Mycobacterium tuberculosis isolates. *Journal of clinical microbiology.* 2008;46(10):3459-3464.
  33. Hoek KG, Schaaf HS, Gey van Pittius NC, van Helden PD, Warren RM. Resistance to pyrazinamide and ethambutol compromises MDR/XDR-TB treatment. *S Afr Med J.* 2009;99(11):785-787.
  34. Ingham B, Brentnall D, Dale E, McFadzean J. Arthropathy induced by antibacterial fused N-Alkyl-4-pyridone-3-carboxylic acids. *Toxicology Letters.* 1977;1:21-26.
  35. Seddon JA, Hesselning AC, Finlayson H, et al. Preventive therapy for child contacts of multidrug-resistant tuberculosis: a prospective cohort study. *Clin Infect Dis.* 2013;57(12):1676-1684.
  36. Forsythe CT, Ernst ME. Do fluoroquinolones commonly cause arthropathy in children? *CJEM.* 2007;9(6):459-462.
  37. Burkhardt JE, Walterspiel JN, Schaad UB. Quinolone arthropathy in animals versus children. *Clin Infect Dis.* 1997;25(5):1196-1204.
  38. Yee CL, Duffy C, Gerbino PG, Stryker S, Noel GJ. Tendon or joint disorders in children after treatment with fluoroquinolones or azithromycin. *Pediatr Infect Dis J.* 2002;21(6):525-529.
  39. Cremades R, Rodriguez JC, Garcia-Pachon E, et al. Comparison of the bactericidal activity of various fluoroquinolones against Mycobacterium tuberculosis in an in vitro experimental model. *J Antimicrob Chemother.* 2011;66(10):2281-2283.
  40. World Health Organization, Geneva, Switzerland. World Health Organization Public Assessment Report on Moxifloxacin. Part 3: Patient Information Leaflet. Available at: <https://extranet.who.int/prequal/sites/default/files/TB286part3v1.pdf> (accessed 31 July 2018). 2017.
  41. Thee S, Garcia-Prats AJ, McIlleron HM, et al. Pharmacokinetics of ofloxacin and levofloxacin for prevention and treatment of multidrug-resistant tuberculosis in children. *Antimicrob Agents Chemother.* 2014;58(5):2948-2951.
  42. Seddon JA, Hesselning AC, Marais BJ, et al. Paediatric use of second-line anti-tuberculosis agents: A review. *Tuberculosis (Edinb).* 2012;92(1):9-17.
  43. Schaaf HS, Victor TC, Venter A, et al. Ethionamide cross- and co-resistance in children with isoniazid-resistant tuberculosis. *Int J Tuberc Lung Dis.* 2009;13(11):1355-1359.
  44. Seifert M, Catanzaro D, Catanzaro A, Rodwell TC. Genetic mutations associated with isoniazid resistance in Mycobacterium tuberculosis: a systematic review. *PLoS One.* 2015;10(3):e0119628.
  45. World Health Organization, Geneva, Switzerland. The use of delamanid in the treatment of multidrug-resistant tuberculosis in children and adolescents: Interim policy guidance. Available at: <http://apps.who.int/iris/bitstream/10665/250614/1/9789241549899-eng.pdf?ua=1> (accessed 21 February 2017). 2016.

46. Balcells ME, Thomas SL, Godfrey-Faussett P, Grant AD. Isoniazid preventive therapy and risk for resistant tuberculosis. *Emerg Infect Dis.* 2006;12(5):744-751.
47. Department of Health, South Africa. The 2013 National Antenatal Sentinel HIV Prevalence Survey South Africa. Available at: <https://www.health-e.org.za/wp-content/uploads/2016/03/Dept-Health-HIV-High-Res-7102015.pdf> (accessed August 2017). 2013.
48. Mandalakas AM, Kirchner HL, Lombard C, et al. Well-quantified tuberculosis exposure is a reliable surrogate measure of tuberculosis infection. *Int J Tuberc Lung Dis.* 2012;16(8):1033-1039.
49. Van Wyk SS, Mandalakas AM, Enarson DA, Gie RP, Beyers N, Hesselning AC. Tuberculosis contact investigation in a high-burden setting: house or household? *Int J Tuberc Lung Dis.* 2012;16(2):157-162.
50. World Health Organization, Geneva, Switzerland. Companion handbook to the WHO guidelines for the programmatic management of drug-resistant tuberculosis. Available from: [http://www.who.int/tb/publications/pmdt\\_companionhandbook/en/](http://www.who.int/tb/publications/pmdt_companionhandbook/en/). (Accessed 20 October 2017). 2014.
51. Denti P, Garcia-Prats AJ, Draper HR, et al. Levofloxacin Population Pharmacokinetics in South African Children Treated for Multidrug-Resistant Tuberculosis. *Antimicrob Agents Chemother.* 2018;62(2).
52. Division of AIDS, National Institute of Allergy and Infectious Diseases, National Institutes of Health, US Department of Health and Human Services. Division of AIDS (DAIDS) Table for Grading the Severity of Adult and Pediatric Adverse Events. Version 2.1. Available at: <https://rsc.tech-res.com/docs/default-source/safety/daids-ae-grading-table-mar2017.pdf> (accessed 11 June 2018) 2017.
53. Garcia-Prats AJ, Draper HR, Finlayson H, et al. Clinical and cardiac safety of long-term levofloxacin in children treated for multidrug-resistant tuberculosis. *Clin Infect Dis.* 2018.
54. Schaaf HS, Gie RP, Kennedy M, Beyers N, Hesselning PB, Donald PR. Evaluation of young children in contact with adult multidrug-resistant pulmonary tuberculosis: a 30-month follow-up. *Pediatrics.* 2002;109(5):765-771.
55. Peto R, Pike MC, Armitage P, et al. Design and analysis of randomized clinical trials requiring prolonged observation of each patient. I. Introduction and design. *Br J Cancer.* 1976;34(6):585-612.
56. Haybittle JL. Repeated assessment of results in clinical trials of cancer treatment. *The British journal of radiology.* 1971;44(526):793-797.
57. Graham SM, Cuevas LE, Jean-Philippe P, et al. Clinical Case Definitions for Classification of Intrathoracic Tuberculosis in Children: An Update. *Clin Infect Dis.* 2015;61Suppl 3:S179-187.
58. Schaaf HS, Garcia-Prats AJ, du Preez K, Rautenbach C, Hesselning AC. Surveillance provides insight into epidemiology and spectrum of culture-confirmed mycobacterial disease in children. *Int J Tuberc Lung Dis.* 2016;20(9):1249-1256.