



# Relative Frequencies of Alloantigen-Specific Helper CD4 T Cells and B Cells Determine Mode of Antibody-Mediated Allograft Rejection

Jawaher Alsughayyir<sup>1†</sup>, Manu Chhabra<sup>1†</sup>, M. Saeed Qureshi<sup>1</sup>, Mekhola Mallik<sup>1</sup>, Jason M. Ali<sup>1</sup>, Ivonne Gamper<sup>1</sup>, Ellen L. Moseley<sup>2</sup>, Sarah Peacock<sup>3</sup>, Vasilis Kosmoliaptsis<sup>1</sup>, Martin J. Goddard<sup>2</sup>, Michelle A. Linterman<sup>4</sup>, Reza Motallebzadeh<sup>5,6,7\*</sup> and Gavin J. Pettigrew<sup>1\*</sup>

## OPEN ACCESS

### Edited by:

Antoine Toubert,  
Paris Diderot University, France

### Reviewed by:

Luiza Guilherme,  
University of São Paulo, Brazil  
Frans Claas,  
Leiden University, Netherlands

### \*Correspondence:

Reza Motallebzadeh  
r.motallebzadeh@ucl.ac.uk  
Gavin J. Pettigrew  
gjp25@cam.ac.uk

<sup>†</sup>These authors have contributed  
equally to this work

### Specialty section:

This article was submitted to  
Alloimmunity and Transplantation,  
a section of the journal  
Frontiers in Immunology

**Received:** 16 October 2018

**Accepted:** 07 December 2018

**Published:** 22 January 2019

### Citation:

Alsughayyir J, Chhabra M,  
Qureshi MS, Mallik M, Ali JM,  
Gamper I, Moseley EL, Peacock S,  
Kosmoliaptsis V, Goddard MJ,  
Linterman MA, Motallebzadeh R and  
Pettigrew GJ (2019) Relative  
Frequencies of Alloantigen-Specific  
Helper CD4 T Cells and B Cells  
Determine Mode of  
Antibody-Mediated Allograft Rejection.  
Front. Immunol. 9:3039.  
doi: 10.3389/fimmu.2018.03039

<sup>1</sup> School of Clinical Medicine, University of Cambridge, Cambridge, United Kingdom, <sup>2</sup> Department of Pathology, Papworth Hospital, Papworth Everard, United Kingdom, <sup>3</sup> Histocompatibility and Immunogenetics Laboratory, Cambridge University Hospitals NHS Foundation Trust, Cambridge, United Kingdom, <sup>4</sup> Laboratory of Lymphocyte Signalling and Development, Babraham Institute, Cambridge, United Kingdom, <sup>5</sup> Division of Surgery and Interventional Sciences, University College London, London, United Kingdom, <sup>6</sup> Centre for Transplantation, Department of Renal Medicine, University College London, London, United Kingdom, <sup>7</sup> Institute of Immunity and Transplantation, University College London, London, United Kingdom

Humoral alloimmunity is now recognized as a major determinant of transplant outcome. MHC glycoprotein is considered a typical T-dependent antigen, but the nature of the T cell alloresponse that underpins alloantibody generation remains poorly understood. Here, we examine how the relative frequencies of alloantigen-specific B cells and helper CD4 T cells influence the humoral alloimmune response and how this relates to antibody-mediated rejection (AMR). An MHC-mismatched murine model of cardiac AMR was developed, in which T cell help for alloantibody responses in T cell deficient (*Tcrbd*<sup>-/-</sup>) C57BL/6 recipients against donor H-2K<sup>d</sup> MHC class I alloantigen was provided by adoptively transferred “TCR75” CD4 T cells that recognize processed H-2K<sup>d</sup> allopeptide via the indirect-pathway. Transfer of large numbers (5 × 10<sup>5</sup>) of TCR75 CD4 T cells was associated with rapid development of robust class-switched anti-H-2K<sup>d</sup> humoral alloimmunity and BALB/c heart grafts were rejected promptly (MST 9 days). Grafts were not rejected in T and B cell deficient *Rag2*<sup>-/-</sup> recipients that were reconstituted with TCR75 CD4 T cells or in control (non-reconstituted) *Tcrbd*<sup>-/-</sup> recipients, suggesting that the transferred TCR75 CD4 T cells were mediating graft rejection principally by providing help for effector alloantibody responses. In support, acutely rejecting BALB/c heart grafts exhibited hallmark features of acute AMR, with widespread complement C4d deposition, whereas cellular rejection was not evident. In addition, passive transfer of immune serum from rejecting mice to *Rag2*<sup>-/-</sup> recipients resulted in eventual BALB/c heart allograft rejection (MST 20 days). Despite being long-lived, the alloantibody responses observed at rejection of the BALB/c heart grafts were predominantly generated by extrafollicular foci: splenic germinal center (GC) activity had not yet developed; IgG secreting cells were confined to the splenic red pulp and bridging channels; and,

most convincingly, rapid graft rejection still occurred when recipients were reconstituted with similar numbers of *Sh2d1a*<sup>-/-</sup> TCR75 CD4 T cells that are genetically incapable of providing T follicular helper cell function for generating GC alloimmunity. Similarly, alloantibody responses generated in *Tcrbd*<sup>-/-</sup> recipients reconstituted with smaller number of wild-type TCR75 CD4 T cells (10<sup>3</sup>), although long-lasting, did not have a discernible extrafollicular component, and grafts were rejected much more slowly (MST 50 days). By modeling antibody responses to Hen Egg Lysozyme protein, we confirm that a high ratio of antigen-specific helper T cells to B cells favors development of the extrafollicular response, whereas GC activity is favored by a relatively high ratio of B cells. In summary, a relative abundance of helper CD4 T cells favors development of strong extrafollicular alloantibody responses that mediate acute humoral rejection, without requirement for GC activity.

This work is composed of two parts, of which this is Part I. Please read also Part II: Chhabra et al., 2019.

**Keywords:** allograft, humoral alloimmunity, germinal center (GC), extrafollicular B cell response, transplantation, vasculopathy

## INTRODUCTION

The *de novo* development of alloantibody against donor MHC antigen following solid organ transplantation is now recognized as a major determinant of transplant outcome (1–5). For example, alloantibody formed within the first year of transplantation is associated with significantly poorer heart graft survival (6). In general, damaging alloantibody responses are associated with two distinct clinico-pathological processes: acute and chronic antibody mediated rejection (AMR). Acute AMR is now characterized for all solid organ transplants [reviewed in (7, 8)], whereas chronic AMR has been recognized only relatively recently (9), and remains ill-defined for some organs (10). Acute AMR affects 5–7% of non-sensitized kidney transplant recipients, is generally associated with high levels of Ig-switched alloantibody directed against mismatched MHC class I and/or class II antigens, and usually occurs within the first 6 months after transplantation. Treatment, typically with plasmapheresis and intravenous immunoglobulin, is less successful than following treatment for acute cellular rejection, and acute AMR is associated with an ~5-fold greater risk of graft loss at 5 years (11).

The link between different clinical manifestations of AMR and the causative cellular events in the allospecific B cell population is not clear. Alloantibody production is a typical T-dependent response, with help for allospecific B cells provided by “indirect-pathway” CD4 T cells that recognize target MHC alloantigen as self-restricted processed allopeptide (12, 13). Following B cell receptor (BCR) ligation, allospecific B cells would be expected to migrate in lymphoid tissue to the edges of the B cell follicle, and, upon productive “cognate” interaction with the indirect-pathway helper CD4 T cell, further differentiate along one of two, mutually exclusive pathways. In the extrafollicular response, help provided by CD44<sup>hi</sup>ICOS<sup>hi</sup>PSGL-1<sup>lo</sup>Bcl-6<sup>+ve</sup> CD4 T cells (14–16), enables the B cell to migrate to short-lived foci

within the red pulp in the spleen and medullary cords of lymph nodes for rapid production of low-affinity antibody (17). In contrast, B cell migration back to the follicle triggers a germinal center (GC) response, with development of the classical secondary follicle composed of a light and dark zone. The GC response is now known to be dependent upon a specialized subset of CXCR5<sup>hi</sup> PD-1<sup>hi</sup> T follicular helper (T<sub>FH</sub>) cells (18, 19).

While the extrafollicular and GC components of the response to model antigens have been extensively studied (20–22), they have not been detailed for transplant antigen. This is an important area for further study, because of the importance of humoral immunity to transplant rejection, and because transplantation provides a functional readout (graft rejection), that by enabling assessment of the “effectiveness” of the various components of the humoral response, may reveal aspects of humoral immunity that are not otherwise evident from study of model antigen systems. Equally, transplantation represents a unique immune challenge, in that vascularized allografts may continually shed alloantigen directly into the recipient’s circulation and T cell recognition of this alloantigen can occur by different pathways (23–25). The relationships between the precursor populations of allospecific helper T cells to B cells may therefore differ for different donor-recipient combinations, and these differences may independently influence the subsequent extrafollicular and GC alloantibody responses. This may be particularly relevant for transplant recipients with acute AMR related to *de novo* production of donor-specific alloantibody. It seems likely that graft injury is mediated predominantly by an extrafollicular response, particularly during the initial stages. Certain patients may therefore be especially susceptible to early humoral rejection. However, the factors that determine the relative “strength” of the extrafollicular and GC alloantibody responses remain unclear, as does the respective contribution of the two phases to acute AMR.

Here we use murine models of AMR to demonstrate that a high ratio of antigen-specific helper CD4 T cells favors development of robust extrafollicular responses, and that these responses can mediate acute AMR without requirement for a GC component.

## MATERIALS AND METHODS

### Animals

C57BL/6 (BL/6; H-2<sup>b</sup>) and BALB/c mice (H-2<sup>d</sup>) were purchased from Charles River Laboratories (Margate, UK) and maintained according to the institutional guidelines of The University of Cambridge. T cell receptor-deficient mice (H-2<sup>b</sup>, *Tcrbd*<sup>-/-</sup>) BL/6.129P2-*Tcrbtm1MomTcrdtm1Mom/J* were purchased from the Jackson Laboratory (Bar Harbor, ME). C57BL/6 *Rag2*<sup>-/-</sup> mice (H-2b) were gifted by Prof T. Rabbitts (Laboratory of Molecular Biology, Cambridge, UK). TCR-transgenic *Rag1*<sup>-/-</sup> TCR75 mice (H-2<sup>b</sup>), specific for I-A<sup>b</sup>-restricted H-2K<sub>54-68</sub><sup>d</sup> peptide (26) were gifted by Prof. P. Bucy (University of Alabama, Birmingham, AL). BL/6 HEL-specific TCR7 transgenic mice (27), specific for I-A<sup>b</sup>-restricted HEL<sub>74-88</sub> peptide, were gifted by Dr M Linterman (Laboratory of Lymphocyte Signaling and Development, Babraham Institute, Cambridge, UK). *Sh2d1a*<sup>-/-</sup> mice (28) were gifted by Dr S. Crotty (University of California, La Jolla, California). Mice were bred and maintained in specific pathogen-free animal facilities and were maintained in individual ventilated cages in specific-pathogen free facilities and fed standard rodent feeds. Mice weighed between 18–22g at the time of their use for *in vitro* experiments and transplants. See also **Table S1**.

### Heterotopic Cardiac Transplantation

Vascularized cardiac allografts were transplanted intra-abdominally as previously described (24, 29). Recipient BL/6 *Tcrbd*<sup>-/-</sup> or *Rag2*<sup>-/-</sup> animals were reconstituted with TCR75 CD4 T cells, by intravenous injection of splenocytes from *Rag1*<sup>-/-</sup> TCR75 mice in which numbers of CD4 T cells were first determined by flow cytometry. Hearts or cells from male donors were not transplanted or transferred into female animals in order to control for mismatch of the male H-Y antigen. Heart graft survival was monitored by daily abdominal palpation with rejection defined as cessation of a detectable beat, and rejection was defined as cessation of palpable myocardial contraction, confirmed at the time of explant. Grafts were excised at predetermined time points after transplantation and stored at -80°C or fixed in 10% buffered formalin.

### Immunizations and Adoptive Cell Transfers

BL/6 *Tcrbd*<sup>-/-</sup> were immunized subcutaneously with 50 µg purified HEL protein (Sigma-Aldrich Inc., St. Louis, MO, USA) emulsified in complete Freund's adjuvant (Sigma-Aldrich). Immunized mice were subsequently adoptively transferred with prerequisite numbers of HEL-specific B cells and CD4 T cells that were first isolated from spleens of donor SW<sub>HEL</sub> and TCR7 mice, respectively, and then enumerated by flow cytometry and Trucount<sup>TM</sup> (BD Biosciences, San Jose, CA) analysis by staining with the following antibodies: CD3-FITC, CD19-PE (both BD

Biosciences), and HEL protein conjugated with biotin (developed in-house) followed by Streptavidin-Alexa Fluor 555 (Thermo Fisher Scientific, Waltham, MA, USA) for HEL<sup>+</sup> B cells, and CD4-APC with Vβ3-PE (both BD Biosciences) for HEL-specific CD4 T cells.

### Passive Immune Serum Transfer

In certain experiments, *Rag2*<sup>-/-</sup> recipients of BALB/c heart allografts were intra-peritoneally injected with heat-inactivated pooled immune serum (500 µl 3 times weekly for 3 weeks or for shorter duration if the heart allografts had rejected), obtained at 50 days after transplantation from BL/6 *Tcrbd*<sup>-/-</sup> recipients of a BALB/c heart allograft reconstituted with 5 × 10<sup>5</sup> *Rag1*<sup>-/-</sup> TCR75 CD4 T cells.

### Assays of Anti-H-2K<sup>d</sup> and Anti-HEL Humoral Immunity

Serum samples were collected from experimental mice at intervals and analyzed for the presence of anti-H-2K<sup>d</sup> and anti-HEL IgG antibody by ELISA as previously described (12, 13, 30) (**Figure S1**). For each sample, an absorbance vs. dilution curve was plotted, and the area under the curve calculated (31) and expressed as the percentage of positive control (pooled hyperimmune anti-H-2K<sup>d</sup> IgG) serum recovered from BL/6 recipients of BALB/c skin grafts (**Figure S1**) or HyHEL10 anti-HEL IgG monoclonal antibody (Absolute Antibody, Oxford, UK). Single anti-H-2K<sup>d</sup> or anti-HEL IgG antibody-secreting cells in the spleen and bone marrow of recipient mice were detected by B cell ELISPOT assay as previously described (13, 32).

### Recipient Anti-HLA-specific Antibody Screening

Non-sensitized recipients who received a primary deceased donor kidney transplant at Cambridge University Hospital were monitored for the development of HLA antibodies using the Lumindex-based LABScreen Single Antigen beads (One Lambda, Canoga Park, CA) as described previously (33). As in our previous studies, IgG MFI values more than or equal to 1,500 were considered positive (34).

### CFSE Cell Proliferation and Flow Cytometry

Suspensions of CD4 T cells obtained from TCR75 mice were stained with 5 mM CFSE (Thermo Fisher Scientific) in the dark for 5 min and then quenched with PBS plus 5% FCS. CFSE-stained CD4 T cells were injected intravenously into recipient mice, spleens harvested 3 days later, and flow cytometry performed using allophycocyanin-conjugated anti-CD4 plus PE-conjugated anti-CD90.1/Thy1.1 (clone OX-7, BioLegend, San Diego, CA, USA) to identify live (7-AAD<sup>-</sup>, BD Biosciences) TCR75 T cells. PE-conjugated anti-mouse CD279/PD1 (BioLegend) and allophycocyanin-conjugated anti-mouse CXCR5 (BD Biosciences) antibodies were used to identify T<sub>FH</sub> cells on a FACSCanto II flow cytometer (BD Biosciences).

## Immunohistology and Confocal Imaging

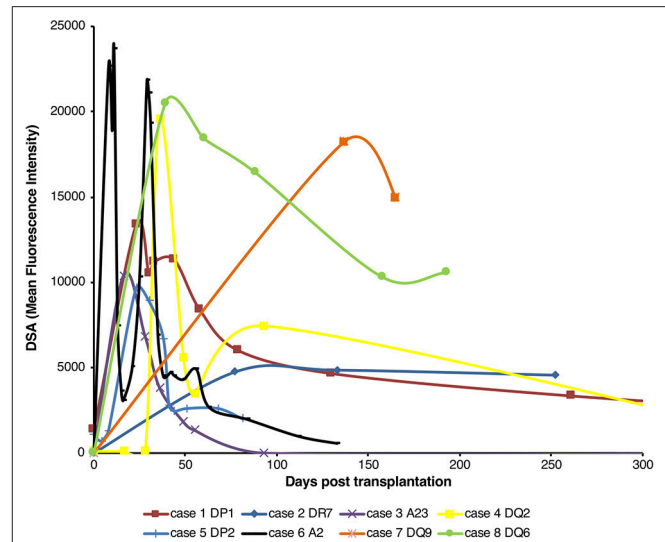
Seven  $\mu\text{m}$  spleen and heart cryostat sections were air-dried and fixed in acetone. Primary mAbs specific for the following mouse epitopes were used for immunohistochemical/fluorescent staining: C4d (clone 16-D2 Abcam, Cambridge, UK) and IgG-FITC (BD Biosciences, San Diego, CA, USA). Splenic GCs were identified by double-labeling sections with rat anti-mouse B220-APC (clone RA3-6B2) and rat anti mouse GL7-FITC (both BD Biosciences). Numbers of GL7<sup>+</sup> GCs were expressed as a percentage of total B220<sup>+</sup> lymphoid follicles (13). HEL-specific GCs were detected using rat anti-mouse GL7-FITC and biotinylated-HEL protein (developed in-house) combined with Streptavidin-Alexa Fluor 555 (Thermo Fisher Scientific) after initially blocking endogenous avidin/biotin activity using an avidin/biotin blocking kit (Vector Laboratories, Burlingame, CA, USA). CD4 T cells within GCs were located with rat anti-mouse CD4-biotin (BD Biosciences) & Streptavidin-Alexa Fluor 555 (Thermo Fisher Scientific). Confocal images were captured with a Leica SP5 confocal microscope using LAS AF software, version 2.7.2.9586 (Leica Microsystems, Wetzlar, Germany). See also **Table S1**.

## Flow Cytometric Detection of Alloantigen and HEL-Specific B Cells

Alloantigen-specific B cells were identified by labeling with synthetic MHC class I tetramer as described previously (35–37). Single cell suspensions were obtained from recipient spleens and incubated with APC- and FITC-conjugated MHC class I K<sup>d</sup> tetramers, kindly gifted by the NIH Core Tetramer facility, Atlanta, GA, USA. B cells binding to fluorescently labeled tetramers can comprise of two distinct populations of B cells—those recognizing the MHC class I molecule directly or those recognizing the fluorochrome; dual labeling allows for reliable identification of very low frequency antigen-specific B cells. After 1 h incubation at 4°C, cells were washed and tetramer-bound cells were enriched using anti-APC and anti-FITC microbeads (Miltenyi Biotec) on an Automacs<sup>TM</sup> separator. The enriched fraction was collected and cells were incubated with anti-mouse CD16/CD32 (clone 2.4G2) before labeling for the following antigens: CD19-PerCp (Miltenyi Biotec), GL7-PE (BioLegend), FAS-PE-CY7 (Jo2, BD Biosciences), and fixable viability dye (eFluor<sup>®</sup> 780, eBiosciences). Labeled cells were identified on a FACSCanto II flow cytometer and data analyzed using FLOWJo software (Tree Star Inc., Ashland, OR). B cell populations of interest were enumerated by Trucount<sup>TM</sup> analysis according to manufacturer's instructions (BD Biosciences). HEL-specific GC B cells were identified in similar fashion, by labeling splenic single cell suspensions with B220-FITC (BD Biosciences), biotinylated-HEL protein and Streptavidin-APC (Thermo Fisher Scientific).

## Statistical Analysis

Data were presented as mean  $\pm$  S.E.M where appropriate, with each animal constituting one biological replicate where indicated. Unpaired *t*-tests and Mann-Whitney *U*-tests were used for analysis of parametric data and non-parametric data, respectively. Two-way ANOVA was employed for comparison of anti-H-2K<sup>d</sup> IgG alloantibody responses. Graft survival was



**FIGURE 1** | Pattern of *de novo* alloantibody development after kidney transplantation. The development of donor specific alloantibodies (DSA) against donor HLA antigen in eight human kidney transplant recipients (representative of a general cohort that were known to have DSA and whose alloantibody profile was serially assessed) was characterized by single-antigen HLA bead analysis of recipient sera. Recipient sera were analyzed for DSA until day 500 post-transplant; data is presented for the first 300 days, with cases 1 and 4 showing a mean fluorescence intensity of 733 at day 503 and 640 at day 386, respectively. Two general patterns of DSA formation were identified: very high levels of DSA which were relatively short-lived; and DSA levels which plateaued and remained at appreciable levels for a much longer period.

depicted using Kaplan-Meier analysis and groups compared by log-rank (Mantel-Cox) testing. Analysis was conducted using GraphPad 4 (Graph-Pad Software, San Diego, CA, USA). Values of  $P < 0.05$  were considered significant.

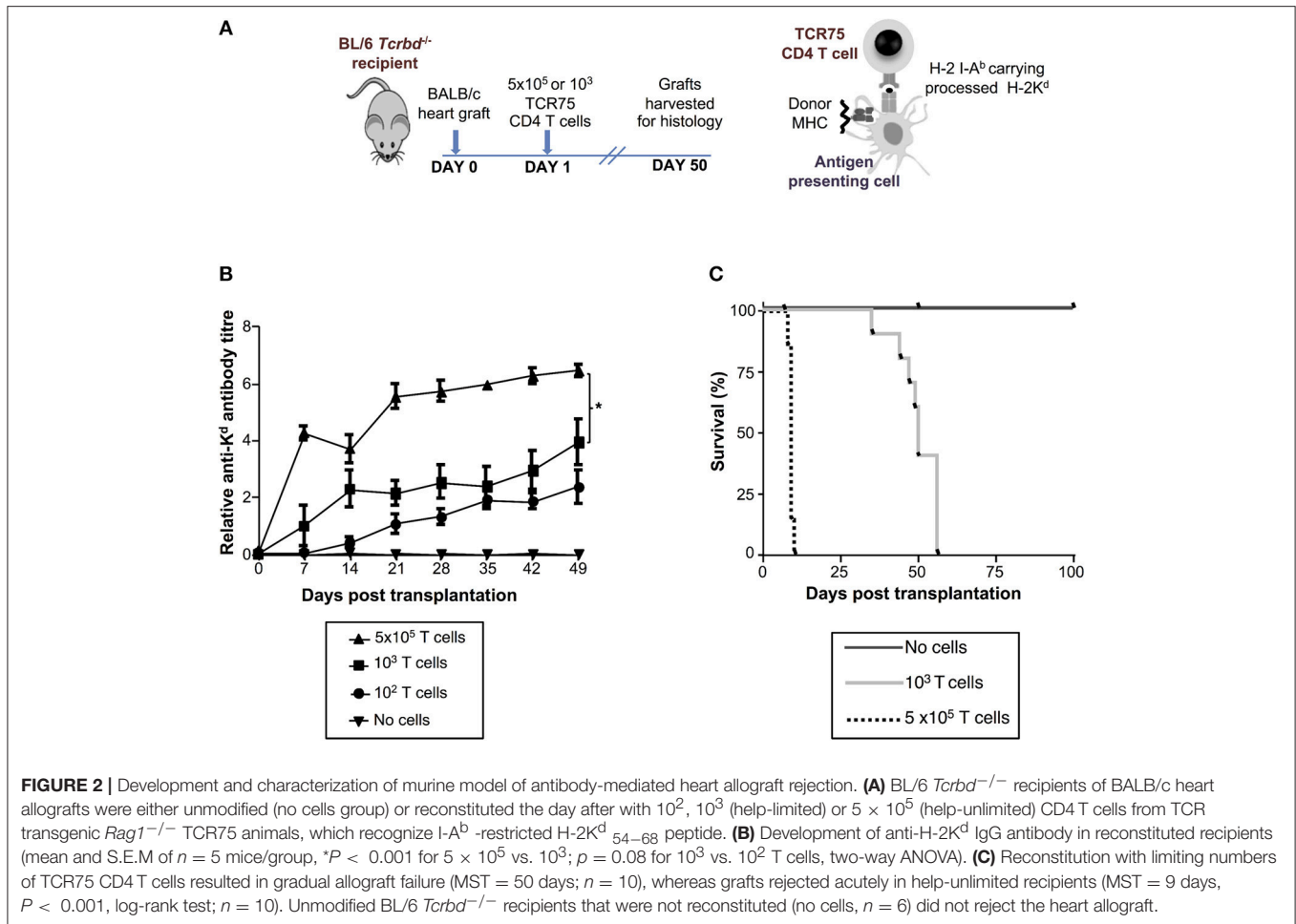
## Study Approval

This research has been regulated under the Animals (Scientific Procedures) Act 1986 Amendment Regulations 2012 following ethical review by the University of Cambridge Animal Welfare and Ethical Review Body (AWERB). All surgery was performed under inhalational anesthesia and every effort was made to minimize suffering.

## RESULTS

### Post-transplant HLA Antibodies in Human Renal Transplant Recipients

Analysis of the development of *de novo* donor specific alloantibody (DSA) post-transplantation in non-sensitized recipients of first time kidney allografts revealed two different patterns (**Figure 1**). Some recipients generated high levels of DSA, but that waned within the first thirty days, whereas in others, levels of DSA were sustained over many months. Because these patterns are compatible with short-lived extrafollicular foci vs. LLPC output from a GC reaction, we sought to establish an animal model to study how cellular events occurring within



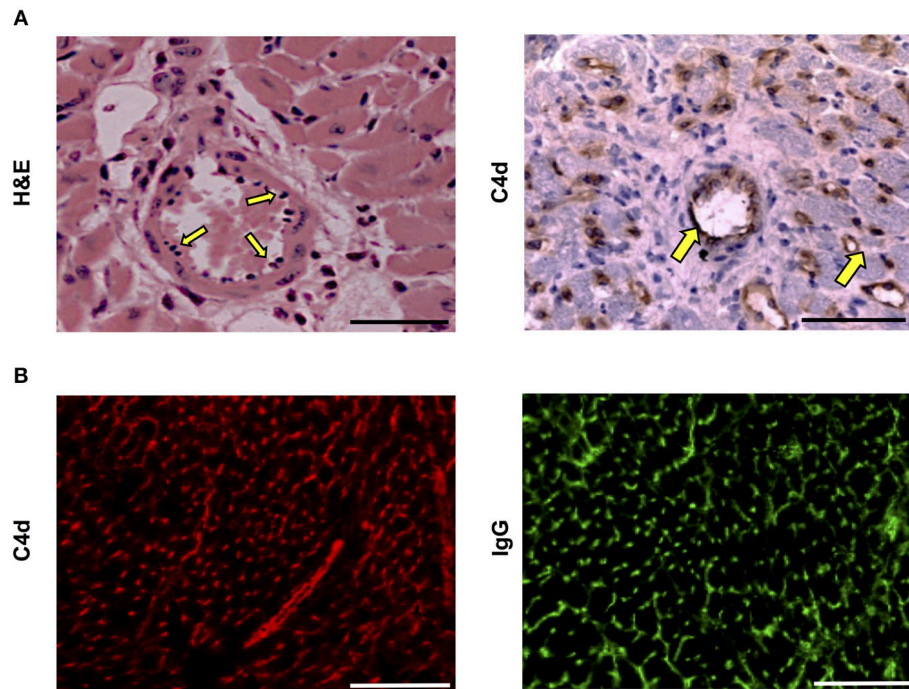
the allospecific B cell population relate to the pattern of DSA detected in human recipients.

### Precursor Frequency of the Helper T Cell Subset Is Rate Limiting for Early Alloantibody Production

We have previously reported that T cell receptor (TCR)-transgenic *Rag1*<sup>-/-</sup> TCR75 CD4T cells [that recognize I-A<sup>b</sup>-restricted H-2K<sup>d</sup><sub>54–68</sub> allopeptide via the indirect pathway (26, 38)] can provide T helper cell function for humoral responses against the H-2K<sup>d</sup> alloantigen of a BALB/c heart allograft (12, 13). We anticipated that because T cell help is a limiting determinant for early alloantibody production (39), the magnitude of the alloantibody response would be influenced by T helper cell availability. Thus, T cell-deficient *Tcrbd*<sup>-/-</sup> mice were reconstituted with varying numbers of TCR75 CD4 T cells (10<sup>2</sup>, 10<sup>3</sup>, or 5 × 10<sup>5</sup>) the day after challenge with a BALB/c heart allograft (Figure 2A). As shown previously for other TCR transgenic CD4 T cell lines (12, 40), TCR75 CD4 T cells do not undergo discernible homeostatic proliferation when transferred into unchallenged *Tcrbd*<sup>-/-</sup> mice (Figure S2). We therefore reasoned that expansion of the transferred TCR75 CD4 T cells

would occur only in response to recognition of target antigen, and that the differences in numbers of transferred cells would be preserved, at least initially, in the recipients. We further reasoned that the different profiles of alloantibody generated according to the number of transferred TCR75 CD4 T cells would manifest as differences in the kinetics of allograft rejection, because there would be no opportunity for classical CD8 T cell-mediated cytotoxicity (41, 42). Similarly, whereas “direct-pathway” CD4 T cells can provoke rapid allograft rejection through cytotoxic destruction of allograft cells expressing MHC class II alloantigen (43), the relatively small numbers of indirect-pathway CD4 T cells that were transferred would be incapable of independently effecting acute heart graft rejection, because the allograft does not express target I-A<sup>b</sup>-restricted allopeptide epitope immediately after transplantation (44, 45). We have recently briefly described this model in relation to NK cell allrecognition of passenger lymphocytes (46).

Reconstitution of BL/6 *Tcrbd*<sup>-/-</sup> mice with as few as 10<sup>2</sup> TCR75 CD4T cells provoked long-lasting, IgG humoral alloimmunity against H-2K<sup>d</sup> alloantigen of the BALB/c heart graft (Figure 2B). A broadly similar response was observed following transfer of 10<sup>3</sup> TCR75 CD4T cells (henceforth termed the “help-limited” group). In comparison, the anti-K<sup>d</sup>



**FIGURE 3** | Histopathological confirmation of humoral rejection in help-unlimited recipients. **(A)** Day 6 BALB/c hearts explanted from BL/6 *Tcrbd*<sup>-/-</sup> recipients reconstituted with  $5 \times 10^5$  TCR75 CD4 T cells demonstrated (*left*) widespread myocyte death (loss of striation), endothelial plumping and peri-vascular edema, and (*right, arrows*) strong endothelial complement C4d deposition. **(B)** Representative photomicrographs of immunofluorescence staining showing interstitial capillary staining for C4d (red, *left*); scale bar—50  $\mu$ m and IgG deposition (green, *right*); scale bar—50  $\mu$ m.

alloantibody response in recipient mice reconstituted with  $5 \times 10^5$  TCR75 CD4 T cells (henceforth the “help-unlimited” group) was markedly stronger at all time-points and developed more rapidly, such that appreciable levels of alloantibody were detectable 1 week after transplant (Figure 2B). The transferred TCR75 CD4 T cells mediated heart allograft rejection, because whereas BALB/c heart allografts survived indefinitely in unmodified BL/6 *Tcrbd*<sup>-/-</sup> recipients, transfer of even small numbers ( $10^3$ ) of TCR75 CD4 T cells resulted in gradual graft failure (Figure 2C, median survival time (MST) = 50 days). Kinetics of heart graft rejection were, however, markedly different in the help-unlimited group, in that all grafts were rejected acutely with a MST of 9 days (Figure 2C).

### Histopathological Confirmation of Acute Humoral Rejection

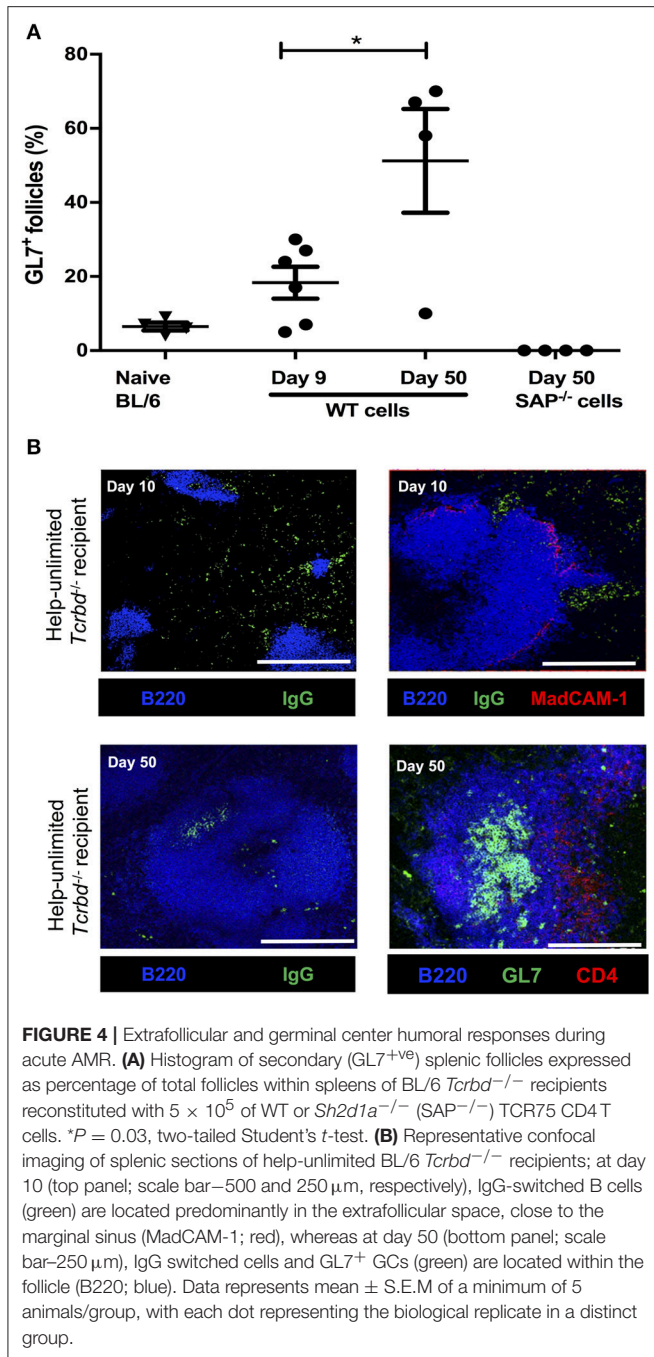
Histopathological examination of acutely rejecting BALB/c heart allografts explanted at day six from help-unlimited recipients revealed a striking absence of cellular rejection (Figure 3A). Instead there was widespread myocyte death, hemorrhage, edema, associated with “plumping” of the endothelium (Figure 3A, *left*). Immuno-histochemical labeling with anti-C4d antibody showed diffuse parenchymal staining (Figure 3A, *right*), possibly reflecting acute myocyte death, but in addition, there was strong and distinct endothelial complement deposition, associated with intragraft IgG deposition (Figure 3B). These features are thus consistent with severe (Grade 3) acute

antibody-mediated rejection (47) as the principal cause of graft failure.

### Acute AMR Is Mediated by Extrafollicular Alloantibody Responses

Although we have previously shown that transferred TCR75 CD4 T cells can provide T<sub>FH</sub> cell function for generating GC responses against H-2K<sup>d</sup> alloantigen (13), we thought it likely that the rapid rejection observed in the help unlimited group preceded development of the GC reaction. In support, splenic GC activity was barely above background by day 9 (the median time to graft rejection), but by day 50, approximately half the B cell follicles exhibited a GL7<sup>+ve</sup> activated phenotype (Figure 4A). In addition, splenic confocal imaging confirmed that at day 10 in the help unlimited group, class-switched, IgG<sup>pos</sup> (antibody-producing) cells were confined outside of the B220<sup>pos</sup> B cell follicles, in extrafollicular foci close to the marginal sinus (Figure 4B). However, seven weeks after transplant, IgG<sup>pos</sup> cells in the help-unlimited group were confined within B cell follicles (Figure 4B). Thus, these results suggest that the early alloantibody response observed in the help-unlimited group is predominantly a consequence of an extrafollicular response.

To confirm that acute humoral rejection could be mediated exclusively by an extrafollicular response, *Tcrbd*<sup>-/-</sup> recipients of a BALB/c heart allograft were instead reconstituted with *Sh2d1a*<sup>-/-</sup> TCR75 CD4 T cells. *Sh2d1a*<sup>-/-</sup> T cells lack expression of SLAM-associated protein (SAP), which is essential



for the prolonged physical interactions between B and T cells that leads to generation of the T<sub>FH</sub> cell subset (19, 48–51). GC activity does not therefore occur, but *Sh2d1a*<sup>-/-</sup> T cells can still provide help for extrafollicular responses. Recipients reconstituted with  $5 \times 10^5$  *Sh2d1a*<sup>-/-</sup> TCR75 CD4 T cells (help-unlimited *SAP*<sup>-/-</sup>) generated robust early anti-K<sup>d</sup> alloantibody responses, of a magnitude similar to that initially observed in the help-unlimited wild-type group (Figure 5A), but which waned thereafter, in keeping with the inability to form GCs responses (Figure 5B). The lack of the GC response was also

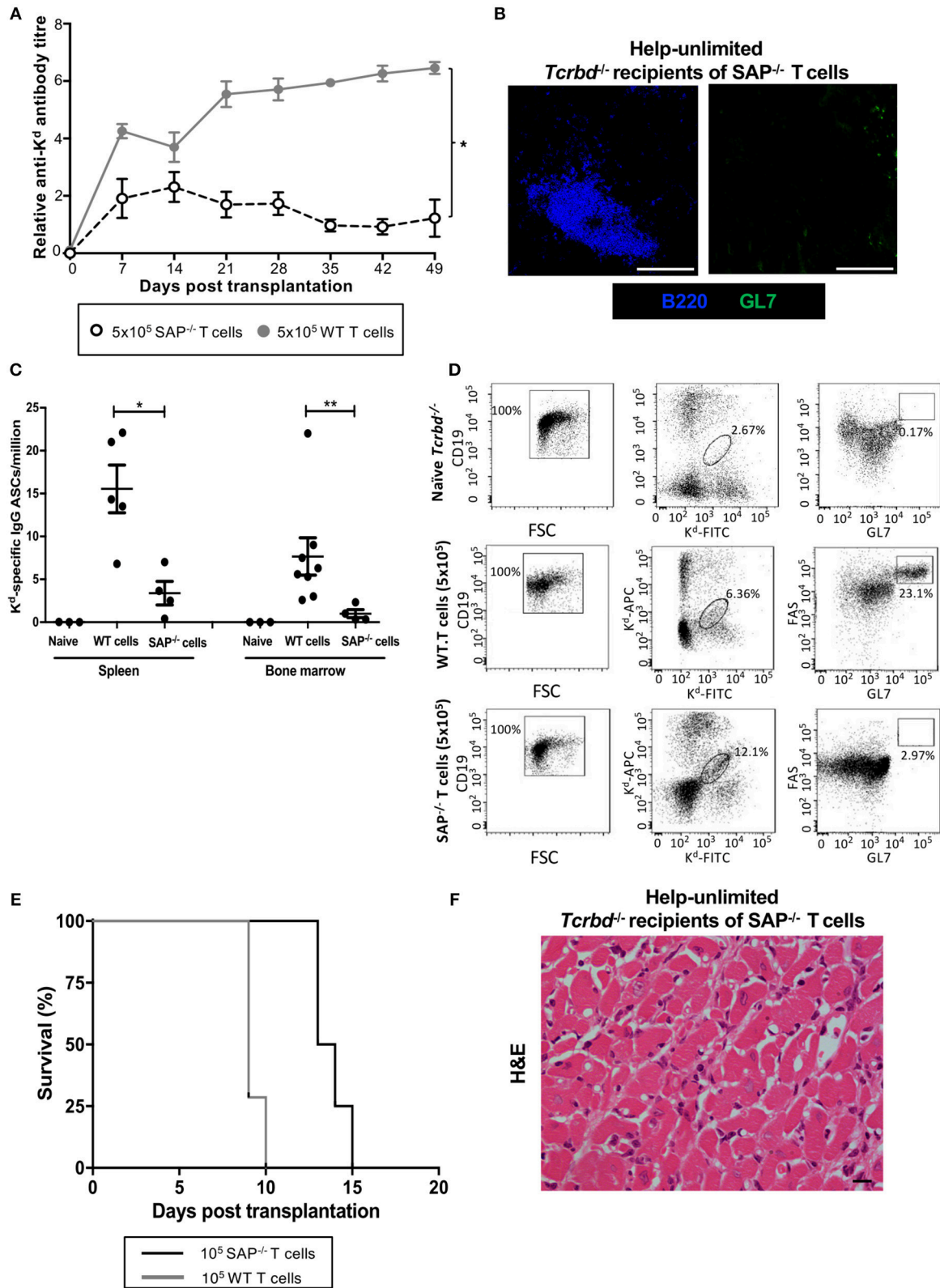
evident in the absence of deposition of H-2K<sup>d</sup> specific long-lived plasma cells (LLPCs) in the bone marrow (Figure 5C). Similarly, identification of H-2K<sup>d</sup> allospecific B cells by labeling with synthetic H-2K<sup>d</sup> tetramer revealed that, although the population expanded following challenge with a BALB/c heart allograft in the help-unlimited *SAP*<sup>-/-</sup> recipients, acquisition of GL7<sup>hi</sup>FAS<sup>hi</sup> GC surface phenotype did not occur (Figure 5D). Despite the absence of a GC response, the strong extrafollicular alloantibody response generated in the help-unlimited *SAP*<sup>-/-</sup> recipients resulted in rapid rejection of BALB/c heart allografts (Figure 5E, MST 13.5 days), similar in tempo to that observed in the help-unlimited WT recipients (MST 9 days). The explanted heart allografts similarly exhibited characteristic features of acute humoral rejection, and an absence of lymphocytic infiltrates (Figure 5F).

### Alloantibody as an Effector Mechanism for Acute AMR

Although the histological features of heart allografts in the acutely-rejecting, help-unlimited WT group are strongly suggestive of humoral rejection, we sought to confirm that alloantibody could independently effect graft damage. In this regard, BALB/c heart grafts survived indefinitely, without evidence of IgG or endothelial complement C4d deposition (Figure 6A), when transplanted into T and B cell deficient *Rag2*<sup>-/-</sup> recipients, even when their T cell compartment was restored by adoptive transfer of  $5 \times 10^5$  WT TCR75 CD4 T cells. A direct effector role for alloantibody was then examined by passive transfer of immune serum (pooled from BL/6 *Tcrbd*<sup>-/-</sup> recipients reconstituted with  $5 \times 10^5$  TCR75 CD4 T cells) into *Rag2*<sup>-/-</sup> recipients of a BALB/c heart allograft. Passive transfer of immune serum achieved antibody titres in the *Rag2*<sup>-/-</sup> recipients similar to those observed in the help-unlimited BL/6 *Tcrbd*<sup>-/-</sup> recipients for the first 3 weeks (Figure 6B) and resulted in early graft rejection (Figure 6C). Rejecting grafts showed acute myocyte loss, oedema, endothelial swelling and invading neutrophils, along with extensive endothelial C4d deposition (Figure 6D, left panel). Injection of equivalent amounts of control serum from unmodified *Rag2*<sup>-/-</sup> recipients of a BALB/c heart allograft did not prompt graft rejection (Figure 6C), and no graft damage was evident on histological examination (Figure 6D, right panel).

### The Relative Strength of the Extra-Follicular and GC Response Is Influenced by Precursor Proportions of Helper T Cells and Antigen Specific B Cells

Despite the initially stronger alloantibody response observed in the help-unlimited recipient group, it was notable that germinal center activity at late time points in the help unlimited and help-limited groups was similar [see Figure 4A and companion paper (52) -Figure 3B], suggesting that whereas the availability of T cell help influences the ‘strength’ of the extrafollicular response, other factors determine GC development. Given that competition for limiting availability of T<sub>FH</sub> cells is critical for selection of high-affinity variants generated by SHM within the



**FIGURE 5 |** AMR is mediated by extrafollicular alloantibody responses in help-unlimited recipients. BL/6 *Tcrbd*<sup>-/-</sup> recipients were reconstituted with  $5 \times 10^5$  wild-type (help-unlimited WT) TCR75 CD4 T cells ( $n = 7$ ) or  $5 \times 10^5$  *Sh2d1a*<sup>-/-</sup> (help unlimited SAP<sup>-/-</sup>) TCR75 CD4 T cells ( $n = 4$ ) at challenge with a BALB/c heart allograft. **(A)** Compared with the WT group (copied from **Figure 2B** for ease of comparison), anti-H-2K<sup>d</sup> IgG alloantibody responses in the help-unlimited SAP<sup>-/-</sup> (Continued)



**FIGURE 5** | group were not sustained. \* $P < 0.0001$  two-way ANOVA. **(B)** Representative immunofluorescent staining of day 50 splenic sections from help-unlimited SAP<sup>-/-</sup> and WT recipients, confirming an absence of GL7<sup>+ve</sup> (green) GC activity in the SAP<sup>-/-</sup> group: scale bar—250  $\mu$ m. **(C)** ELISPOT assay of splenic and bone-marrow (BM) anti-K<sup>d</sup> IgG antibody secreting cells (ASCs) 50 days after transplantation. Numbers of BM ASCs in recipients reconstituted with SAP<sup>-/-</sup> TCR75 CD4 T cells were not above background; \* $P = 0.03$ , \*\* $P = 0.004$ , Mann-Whitney test. **(D)** Splenic H-2K<sup>d</sup>-specific B cells were identified by flow cytometric detection of binding of CD19<sup>+ve</sup> B cells to FITC-conjugated and APC-conjugated synthetic H-2K<sup>d</sup> tetramers in naïve unchallenged BL/6 *Tcrbd*<sup>-/-</sup>, help-unlimited WT and help-unlimited SAP<sup>-/-</sup> recipients, 6–7 weeks after challenge with a BALB/c graft. Gated cells in middle and right column of representative dot plots show percentage of enriched CD19<sup>+ve</sup> B cells binding H-2K<sup>d</sup> tetramer, and percentage of GC-specific (FAS<sup>hi</sup>GL7<sup>pos</sup>) tetramer bound CD19<sup>+ve</sup> B cells, respectively. Whereas, transplantation provoked expansion of the H-2K<sup>d</sup> specific B cell population in the help unlimited SAP<sup>-/-</sup> recipients, GC B cells were not detectable. **(E)** BALB/c heart allografts were rejected acutely in the help-unlimited WT ( $n = 7$ , MST-9 days) and help unlimited SAP<sup>-/-</sup> ( $n = 4$ , MST-13.5 days) recipient groups. **(F)** Day 10 BALB/c hearts explanted from help unlimited SAP<sup>-/-</sup> recipients showing widespread myocyte death (loss of striation pattern), but an absence of cellular lymphocytic infiltration.

GC (21), we hypothesized that GC activity would instead be governed by precursor frequency of the responding, antigen-specific B cell population. To test this, varying numbers ( $10^3$  or  $10^5$ ) of CD4 T cells purified from TCR7 mice (that recognize I-A<sup>b</sup>-restricted HEL peptide) plus B cells purified from SW<sub>HEL</sub> mice ( $10^4$  or  $10^6$ ) were adoptively transferred into BL/6 *Tcrbd*<sup>-/-</sup> mice that were immunized with HEL protein. The HEL-specific extrafollicular and GC responses were analyzed at 1 and 3 weeks after immunization, as described previously (53). At week 1, strong anti-HEL IgG responses were only observed in mice adoptively transferred with large ( $10^5$ ) numbers of TCR7 CD4 T cells, despite transfer of relatively few ( $10^4$ ) HEL-specific SW<sub>HEL</sub> B cells in this group (Figure 7A). Simultaneous ELISPOT analysis revealed that appreciable numbers of splenic HEL-specific antibody-secreting-cells were recovered only from this group and not, notably, in the group that had received greater numbers ( $10^6$ ) of SW<sub>HEL</sub> B cells but fewer T cells (Figure 7B). Immunofluorescent analysis confirmed that at this time, IgG<sup>pos</sup> secreting cells were located exclusively within extrafollicular foci, but in keeping with the anti-HEL titres, only in the group that had been reconstituted with greater numbers of TCR7 CD4 T cells (Figure 7C, left). In contrast, by week three, similar anti-HEL antibody responses were observed in all groups, irrespective of the number of TCR7 helper CD4 T cells transferred (Figure 7A, right histogram). By this stage, the extrafollicular foci had dissipated (Figure 7C, middle) and instead HEL-specific GC activity was detectable (Figure 7D), but most obviously in the group that received greater numbers of HEL-specific B cells [and relatively low numbers of HEL-specific T cells (Figures 7D,E)]. Flow cytometric analysis confirmed the presence of splenic HEL specific B cells that expressed a GC phenotype (Figures 7E, S3), and although this proportion appeared higher in the group that had received the larger number of HEL-specific B cells and relatively few HEL-specific CD4 T cells, numbers were too small to permit statistical comparison. In comparison, HEL-specific GC activity was lower in those mice that received greater numbers of HEL-specific CD4 T cells (Figure 7E), despite the robust early anti-HEL response observed in this group (Figure 7A). In the expectation that T<sub>FH</sub> differentiation would be governed by the number of HEL-specific B cells, rather than precursor frequency of HEL-specific CD4 T cells, transferred TCR7 CD4 T cells that expressed CXCR5<sup>hi</sup>PD-1<sup>hi</sup> T<sub>FH</sub> phenotype were enumerated 3 weeks after challenge, but numbers recovered were too small to permit comparison. Nevertheless, these results support the hypothesis that the precursor frequency of the

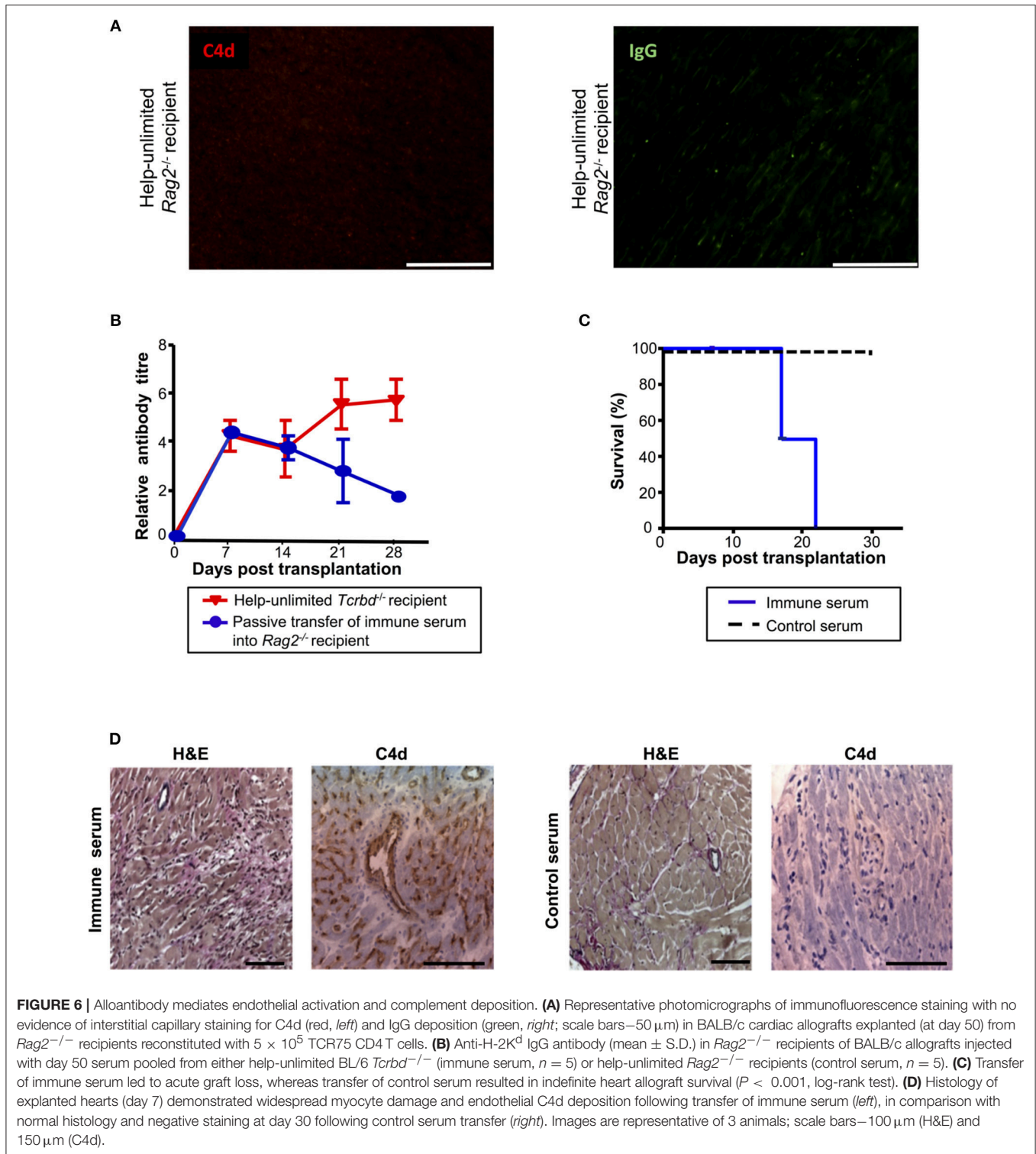
antigen-specific helper CD4 T cell population is a major factor in determining extrafollicular output, whereas GC activity is more strongly influenced by the starting population of antigen-specific B cells.

## DISCUSSION

It has long been recognized that humoral immunity comprises several discrete phases, each providing distinctly different function. How these phases relate to the different clinicopathological manifestations of AMR is not known, and the increasing emphasis of the contribution of alloantibody to clinical transplantation suggests it is an important area for further study. Our findings that strong extrafollicular responses may mediate acute AMR, and that, conversely, GC responses are required for chronic AMR [see companion paper (52) and (54, 55)], therefore begin to provide some correlation between clinical events and the evolving dynamics of the allospecific B cell response.

Our conclusion that strong extrafollicular alloantibody responses can mediate rapid, acute rejection was confirmed experimentally by limiting T cell help to a population of allospecific helper CD4 T cells that lacked SAP expression. The histological features observed in acutely-rejecting allografts (endothelial plumping, neutrophil infiltration, complement deposition, and widespread myocyte death) resembled those that define acute AMR in human cardiac transplantation. Given the absence of direct-pathway cytotoxic T cell responses in our model (heart graft rejection was not observed in *Rag2*<sup>-/-</sup> recipients reconstituted with large numbers of WT CD4 T cells), our experiments therefore provide confirmation that such histological features are a direct consequence of alloantibody binding. Presumably, high titres of alloantibody produced by strong extrafollicular responses, despite being of relatively low affinity, can bind in sufficient concentration to allograft endothelium to trigger widespread complement activation and generation of the membrane attack complex. It should be noted, however, that in the recipient group reconstituted with wild-type TCR75 CD4 T cells (help-unlimited group), GC responses also developed, and it is possible that these also normally contribute to acute AMR.

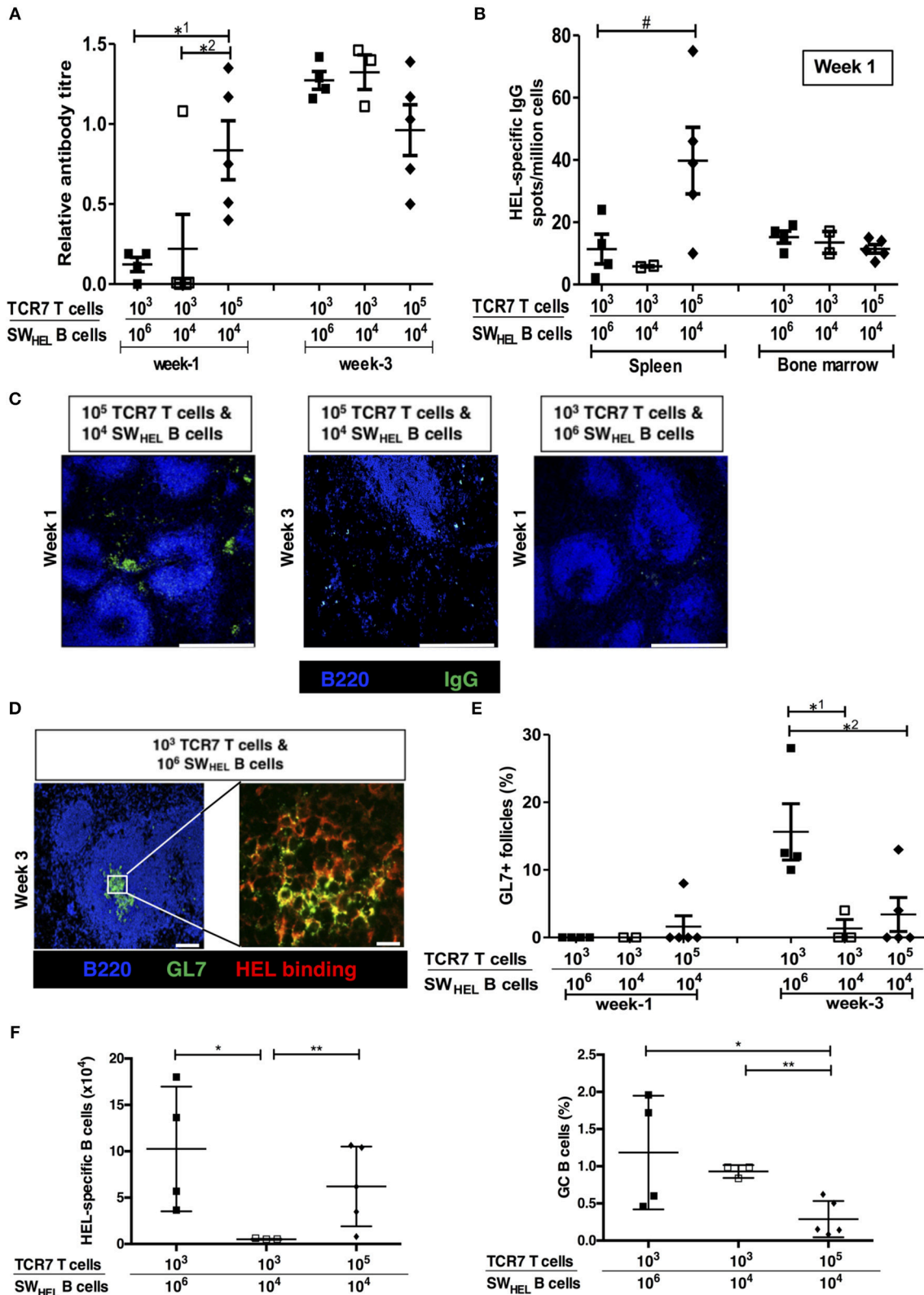
Interestingly, transfer of large numbers of allospecific CD4 T cells was not associated, at least at late time points, with a more robust GC response than observed following transfer of lower



**FIGURE 6 |** Alloantibody mediates endothelial activation and complement deposition. **(A)** Representative photomicrographs of immunofluorescence staining with no evidence of interstitial capillary staining for C4d (red, left) and IgG deposition (green, right; scale bars—50 μm) in BALB/c cardiac allografts explanted (at day 50) from *Rag2*<sup>-/-</sup> recipients reconstituted with  $5 \times 10^5$  TCR75 CD4 T cells. **(B)** Anti-H-2K<sup>d</sup> IgG antibody (mean ± S.D.) in *Rag2*<sup>-/-</sup> recipients of BALB/c allografts injected with day 50 serum pooled from either help-unlimited BL/6 *Tcrbd*<sup>-/-</sup> (immune serum, *n* = 5) or help-unlimited *Rag2*<sup>-/-</sup> recipients (control serum, *n* = 5). **(C)** Transfer of immune serum led to acute graft loss, whereas transfer of control serum resulted in indefinite heart allograft survival (*P* < 0.001, log-rank test). **(D)** Histology of explanted hearts (day 7) demonstrated widespread myocyte damage and endothelial C4d deposition following transfer of immune serum (left), in comparison with normal histology and negative staining at day 30 following control serum transfer (right). Images are representative of 3 animals; scale bars—100 μm (H&E) and 150 μm (C4d).

numbers of CD4 T cells. Our experiments with the HEL system, in which it was possible to titer numbers of responding B cells and helper T cells, confirmed that the extrafollicular response was influenced profoundly by the availability of T cell help. At 1 week, the number of splenic IgG-secreting cells was determined

by numbers of helper T cells (rather than antigen-specific B cells) that had been transferred, suggesting that increased availability of T cell help results in greater division of those B cells that are directed to the extrafollicular foci. This emphasis on an extrafollicular response is not due to lack of an established B



**FIGURE 7 |** Numbers of antigen-specific B cells and helper T cells determine the size of the germinal center vs. extrafollicular response. Humoral responses in BL/6 *Tcrbd*<sup>-/-</sup> mice immunized with Hen Egg Lysosome (HEL) protein and adoptively transferred with different numbers of HEL-specific SW<sub>HEL</sub> B cells and TCR7 CD4 T cells. **(A)** Anti-HEL IgG (mean ± S.E.M, with each dot representing the biological replicate in a distinct animal) measured 1 and 3 weeks after immunization;

(Continued)

**FIGURE 7** | <sup>\*1</sup>*P* = 0.01, <sup>\*2</sup>*P* = 0.04 Mann-Whitney test. **(B)** ELISPOT assay of splenic and bone marrow anti-HEL IgG antibody-secreting cells revealed abundant numbers after 1 week in mice adoptively transferred with large ( $10^5$ ) numbers of TCR7 CD4 T cells; #*P* = 0.06, Mann-Whitney test. **(C)** Representative confocal photomicrographs (scale bars—500 μm) of immunofluorescence staining of splenic sections at 1 and 3 weeks after immunization, depicting B220 B cells (blue) and IgG positive (green) antibody secreting cells: numbers of adoptively transferred TCR7 T cells and SW<sub>HEL</sub> B cells as indicated. IgG secreting cells are readily identified within extrafollicular foci at week 1 in mice transferred with large numbers ( $10^5$ ) of TCR7 CD4 T cells. **(D)** Representative confocal photomicrographs depicting HEL-specific germinal center activity (B220 B cell—Blue; GL7—green; HEL binding—red) at 3 weeks following HEL challenge in mice adoptively transferred with HEL-specific CD4 T and B cells, as indicated (*left*; scale bar—100 μm; *right*; scale bar—20 μm). **(E)** Frequency of HEL-specific GL7<sup>+</sup> GCs detected by immunofluorescence (expressed as percentage of total follicles within spleens of recipient BL/6 *Tcrbd*<sup>-/-</sup> mice). Very few HEL-specific GCs were present at 1 week, but were clearly present by 3 weeks in the group that received proportionally greater numbers of HEL-specific B cells (and low numbers of HEL-specific CD4 T cells); <sup>\*1</sup>*P* = 0.04, <sup>\*2</sup>*P* = 0.03 Mann-Whitney test. **(F)** Flow cytometric enumeration (see **Figure S3**) of splenic HEL-specific B cells (*left histogram*) and percentage with GC (FAS<sup>hi</sup> GL7<sup>+</sup>) phenotype (*right histogram*), 3 weeks after HEL-challenge in mice reconstituted with HEL-specific SW<sub>HEL</sub> B cells and TCR7 CD4 T cells, as indicated. *Left histogram*, \**P* = 0.05 and \*\**P* = 0.41; *right histogram*, \**P* = 0.09 and \*\**P* = 0.003; two-tailed Student's *t*-test.

cell follicular architecture in the T cell-deficient recipients at the time of challenge, because reconstitution with small numbers of antigen-specific T helper cells nevertheless polarized the subsequent B cell response strongly toward a germinal center reaction. A similar finding, but in relation to B cell receptor affinity, has been previously described (56). In contrast, GC activity was only minimally influenced by precursor frequency of the antigen-specific CD4 T cell population. Competition for limiting help from T<sub>FH</sub> cells is critical for GC selection, and given that T<sub>FH</sub> cell differentiation requires cognate B-T cell interaction (50), our experiments suggest that GC activity is mainly determined by the numbers, and response, of the antigen-specific B cell population; the antigen-specific helper T cell population simply plays a facultative role.

One potential concern is that our experimental findings are confounded by the homeostatic proliferation that potentially occurs upon transfer of the allospecific helper T cell population into T cell deficient mice. Against this, and in keeping with our previous studies (12, 13), transfer of a monoclonal population of TCR-transgenic TCR75 CD4 T cells into T cell deficient recipients did not result in substantial homeostatic proliferation. This has also been reported for non-transplant models (40). Nevertheless, we have previously shown that profound antigen-specific proliferation occurs in response to challenge with a K<sup>d</sup>-expressing heart allograft (13), and furthermore, that, in comparison to acute rejection, chronic rejection of BALB/c heart allografts is associated with a markedly expanded population (~5-fold) of chronically-dividing K<sup>d</sup>-peptide specific CD4 T cells (25). Thus, we anticipate that the chronic rejection observed in the help-limited group is associated with ongoing proliferation of the responding TCR75 CD4 T cell population, such that the relatively small number of T cells originally transferred has, by late time points, massively expanded and far exceeds the numbers administered in the help-unlimited group (that provoked acute allograft rejection). The critical difference in the humoral alloimmune response between the help-limited and unlimited groups is that in the first days after transplant, when initial T and B cell activation occurs, the much greater number of CD4 T cells in the help-unlimited group drives a strong extrafollicular response. In the help-limited group, by the time the transferred T cells have undergone an equivalent antigen-driven expansion, the B cell response is already geared toward a germinal center reaction.

Our finding that strong extrafollicular alloantibody responses are capable of independently mediating acute humoral rejection is likely to be clinically relevant. The transfer of large numbers of SAP-defective CD4 T cells resulted in an initially strong alloantibody response that effected acute heart graft rejection, but that thereafter waned, in the absence of a secondary GC response, according to the natural half-life of immunoglobulin. This may parallel the decay in alloantibody described in a cohort of patients whose acute AMR is successfully treated (57). Longer-term transplant outcomes for this cohort are acceptable, suggesting that modulation of the humoral alloimmune response to prevent progression from the extrafollicular to the GC stage may be critical in preventing development of chronic AMR. Finally, our description that extrafollicular and GC output is strongly influenced by the relative proportions of antigen-specific B and T lymphocytes suggests that particularly strong extrafollicular responses that mediate acute AMR may develop even when very few allospecific B cells are initially present, because an abundance of allospecific helper CD4 T cells would drive marked expansion and plasmablast transformation within the extrafollicular foci. This could conceivably occur when allospecific CD4 T cell memory responses have been established prior to the transplant (58, 59), possibly against additional alloantigens expressed on the graft other than those that are targeted by the allospecific B cell response (12). In adult human transplant recipients, the alloresponse is thought to consist principally of recall memory responses, often because of cross-reactive heterologous immunity (60, 61). Our ongoing murine experiments are examining whether stronger extrafollicular alloantibody responses against one alloantigen develop when help from recall memory CD4 T cells against additional “accessory” alloantigens is also available.

## AUTHOR CONTRIBUTIONS

All authors contributed extensively to the work presented in this paper. MC and JA jointly conceived the study with RM and GP, designed and implemented the cardiac allograft rejection model with contributions from MQ, MM, JMA, and IG. ML contributed to characterization of germinal center responses. SP carried out analysis of DSA levels after kidney transplants. EM and MG performed cardiac allograft histopathological characterization. GP and RM prepared

the manuscript, with contributions from MC, JA, VK, and ML.

## FUNDING

This work was supported by a British Heart Foundation project grant, the National Institute for Health Research Cambridge Biomedical Research Centre and the National Institute for Health Research Blood and Transplant Research Unit. MC was supported by the Agency for Science Technology and Research (A\*STAR), Singapore. MQ was supported by a British Heart Foundation Clinical Research Training Fellowship (reference FS/12/87/29899). JA was supported by a grant from King Saud University, Kingdom of Saudi Arabia. VK was supported by an Evelyn Trust grant (reference 14/25) and an Academy of Medical Sciences starter grant (reference RG77106). JMA was supported by a Wellcome Trust Clinical Research Training Fellowship (reference 096207/Z/11/Z) and Raymond and Beverly Sackler Scholarship. RM was supported by a European Society of Organ Transplantation Junior Basic Science Grant. ML is supported by the Bioscience and Biotechnology Research Council.

## REFERENCES

- Tambur AR, Pamboukian SV, Costanzo MR, Herrera ND, Dunlap S, Montpetit M, et al. The presence of HLA-directed antibodies after heart transplantation is associated with poor allograft outcome. *Transplantation* (2005) 80:1019–25. doi: 10.1097/01.tp.0000180564.14050.49
- Hidalgo LG, Campbell PM, Sis B, Einecke G, Mengel M, Chang J, et al. *De novo* donor-specific antibody at the time of kidney transplant biopsies associates with microvascular pathology and late graft failure. *Am J Transplant.* (2009) 9:2532–41. doi: 10.1111/j.1600-6143.2009.02800.x
- Tan CD, Sokos GG, Pidwell DJ, Smedira NG, Gonzalez-Stawinski GV, Taylor DO, et al. Correlation of donor-specific antibodies, complement and its regulators with graft dysfunction in cardiac antibody-mediated rejection. *Am J Transplant.* (2009) 9:2075–84. doi: 10.1111/j.1600-6143.2009.02748.x
- Loupy A, Lefaucheur C, Vernerey D, Prugger C, Duong Van Huyen JP, Mooney N, et al. Complement-binding anti-HLA antibodies and kidney-allograft survival. *N Engl J Med.* (2013) 369:1215–26. doi: 10.1056/NEJMoa1302506
- Loupy A, Lefaucheur C. Antibody-mediated rejection of solid-organ allografts. *N Engl J Med.* (2018) 379:1150–60. doi: 10.1056/NEJMra1802677
- Smith JD, Banner NR, Hamour IM, Ozawa M, Goh A, Robinson D, et al. *De novo* donor HLA-specific antibodies after heart transplantation are an independent predictor of poor patient survival. *Am J Transplant.* (2011) 11:312–9. doi: 10.1111/j.1600-6143.2010.03383.x
- Colvin MM, Cook JL, Chang P, Francis G, Hsu DT, Kiernan MS, et al. Antibody-mediated rejection in cardiac transplantation: emerging knowledge in diagnosis and management: a scientific statement from the American Heart Association. *Circulation* (2015) 131:1608–39. doi: 10.1161/CIR.0000000000000093
- Valenzuela NM, Reed EF. Antibody-mediated rejection across solid organ transplants: manifestations, mechanisms, and therapies. *J Clin Invest.* (2017) 127:2492–504. doi: 10.1172/JCI90597
- Haas M, Sis B, Racusen LC, Solez K, Glotz D, Colvin RB, et al. Banff 2013 meeting report: inclusion of c4d-negative antibody-mediated rejection and antibody-associated arterial lesions. *Am J Transplant.* (2014) 14:272–83. doi: 10.1111/ajt.12590
- Nair N, Ball T, Uber PA, Mehra MR. Current and future challenges in therapy for antibody-mediated rejection. *J Heart Lung Transplant.* (2011) 30:612–7. doi: 10.1016/j.healun.2011.02.002

## SUPPLEMENTARY MATERIAL

The Supplementary Material for this article can be found online at: <https://www.frontiersin.org/articles/10.3389/fimmu.2018.03039/full#supplementary-material>

**Figure S1** | Calculation of relative antibody serum titres. Typical absorbance versus dilution curves obtained from anti-H-2K<sup>d</sup> IgG ELISA assay of serum samples (left) were subjected to area under the curve analysis and antibody levels compared to value obtained for control hyperimmune serum (positive control) (right histogram).

**Figure S2** | Absence of homeostatic proliferation of adoptively transferred TCR75 T cells in T cell deficient mice. Representative flow cytometry histogram (of three independent experiments), gating on CD4<sup>+</sup>, Thy1.1<sup>+</sup>, live (7-AAD<sup>-</sup>), CFSE-labeled  $5 \times 10^5$  TCR75 CD4 T cells, three days after adoptive transfer into BL/6 *Tcrbd*<sup>-/-</sup> mice.

**Figure S3** | Flow cytometric analysis of HEL-specific B and CD4 T cells. Flow cytometric analysis of week 3 spleens for phenotypic characterization of B and T cells in BL/6 *Tcrbd*<sup>-/-</sup> mice immunized with HEL protein and adoptively transferred with different numbers of HEL-specific SW<sub>HEL</sub> B cells and TCR7 CD4 T cells. Lymphocytes were plotted against B cell (B220) and T cell (CD4) markers. A HEL-binding gate was applied on the B cell population prior to quantifying GC B cells (based on GL7 and FAS expression).

**Table S1** | Key resources table.

- Orandi BJ, Chow EH, Hsu A, Gupta N, Van Arendonk KJ, Garonzik-Wang JM, et al. Quantifying renal allograft loss following early antibody-mediated rejection. *Am J Transplant.* (2015) 15:489–98. doi: 10.1111/ajt.12982
- Conlon TM, Cole JL, Motallebzadeh R, Harper I, Callaghan CJ, Bolton EM, et al. Unlinked memory helper responses promote long-lasting humoral alloimmunity. *J Immunol.* (2012) 189:5703–12. doi: 10.4049/jimmunol.1202257
- Conlon TM, Saeb-Parsy K, Cole JL, Motallebzadeh R, Qureshi MS, Rehakova S, et al. Germinal center alloantibody responses are mediated exclusively by indirect-pathway CD4 T follicular helper cells. *J Immunol.* (2012) 188:2643–52. doi: 10.4049/jimmunol.1102830
- Odegard JM, Marks BR, Diplacido LD, Poholek AC, Kono DH, Dong C, et al. ICOS-dependent extrafollicular helper T cells elicit IgG production via IL-21 in systemic autoimmunity. *J Exp Med.* (2008) 205:2873–86. doi: 10.1084/jem.20080840
- Lee SK, Rigby RJ, Zotos D, Tsai LM, Kawamoto S, Marshall JL, et al. B cell priming for extrafollicular antibody responses requires Bcl-6 expression by T cells. *J Exp Med.* (2011) 208:1377–88. doi: 10.1084/jem.20102065
- Deng R, Hurtz C, Song Q, Yue C, Xiao G, Yu H, et al. Extrafollicular CD4<sup>+</sup> T-B interactions are sufficient for inducing autoimmune-like chronic graft-versus-host disease. *Nat Commun.* (2017) 8:978. doi: 10.1038/s41467-017-00880-2
- MacLennan IC, Toellner KM, Cunningham AF, Serre K, Sze DM, Zuniga E, et al. Extrafollicular antibody responses. *Immunol Rev.* (2003) 194:8–18. doi: 10.1034/j.1600-065X.2003.00058.x
- Shulman Z, Gitlin AD, Targ S, Jankovic M, Pasqual G, Nussenzweig MC, et al. T follicular helper cell dynamics in germinal centers. *Science* (2013) 341:673–7. doi: 10.1126/science.1241680
- Vinuesa CG, Linterman MA, Yu D, MacLennan IC. Follicular helper T cells. *Annu Rev Immunol.* (2016) 34:335–68. doi: 10.1146/annurev-immunol-041015-055605
- Chan TD, Brink R. Affinity-based selection and the germinal center response. *Immunol Rev.* (2012) 247:11–23. doi: 10.1111/j.1600-065X.2012.01118.x
- Victoria GD, Nussenzweig MC. Germinal centers. *Annu Rev Immunol.* (2012) 30:429–57. doi: 10.1146/annurev-immunol-020711-075032
- Liu D, Xu H, Shih C, Wan Z, Ma X, Ma W, et al. T-B-cell entanglement and ICOSL-driven feed-forward regulation of germinal centre reaction. *Nature* (2015) 517:214–8. doi: 10.1038/nature13803
- Sivaganesh S, Harper SJ, Conlon TM, Callaghan CJ, Saeb-Parsy K, Negus MC, et al. Copresentation of intact and processed MHC alloantigen by recipient dendritic cells enables delivery of linked help to alloreactive CD8 T

- cells by indirect-pathway CD4 T cells. *J Immunol.* (2013) 190:5829–38. doi: 10.4049/jimmunol.1300458
24. Harper SJ, Ali JM, Wlodek E, Negus MC, Harper IG, Chhabra M, et al. CD8 T-cell recognition of acquired alloantigen promotes acute allograft rejection. *Proc Natl Acad Sci USA.* (2015) 112:12788–93. doi: 10.1073/pnas.1513533112
  25. Ali JM, Negus MC, Conlon TM, Harper IG, Qureshi MS, Motallebzadeh R, et al. Diversity of the CD4 T cell alloresponse: the short and the long of it. *Cell Rep.* (2016) 14:1232–45. doi: 10.1016/j.celrep.2015.12.099
  26. Honjo K, Xu X, Bucy RP. CD4+ T-cell receptor transgenic T cells alone can reject vascularized heart transplants through the indirect pathway of alloantigen recognition. *Transplantation* (2004) 77:452–5. doi: 10.1097/01.TP.0000112937.12491.42
  27. Neighbors M, Hartley SB, Xu X, Castro AG, Bouley DM, O'garra A. Breakpoints in immunoregulation required for Th1 cells to induce diabetes. *Eur J Immunol.* (2006) 36:2315–23. doi: 10.1002/eji.200636432
  28. Czar MJ, Kersh EN, Mijares LA, Lanier G, Lewis J, Yap G, et al. Altered lymphocyte responses and cytokine production in mice deficient in the X-linked lymphoproliferative disease gene SH2D1A/DSHP/SAP. *Proc Natl Acad Sci USA.* (2001) 98:7449–54. doi: 10.1073/pnas.131193098
  29. Corry RJ, Winn HJ, Russell PS. Heart transplantation in congenic strains of mice. *Transplant Proc.* (1973) 5:733–5.
  30. Phan TG, Amesbury M, Gardam S, Crosbie J, Hasbold J, Hodgkin PD, et al. B cell receptor-independent stimuli trigger immunoglobulin (Ig) class switch recombination and production of IgG autoantibodies by anergic self-reactive B cells. *J Exp Med.* (2003) 197:845–60. doi: 10.1084/jem.20022144
  31. Callaghan CJ, Win TS, Motallebzadeh R, Conlon TM, Chhabra M, Harper I, et al. Regulation of allograft survival by inhibitory FcγRIIb signaling. *J Immunol.* (2012) 189:5694–702. doi: 10.4049/jimmunol.1202084
  32. Phan TG, Gardam S, Basten A, Brink R. Altered migration, recruitment, and somatic hypermutation in the early response of marginal zone B cells to T cell-dependent antigen. *J Immunol.* (2005) 174:4567–78. doi: 10.4049/jimmunol.174.8.4567
  33. Kosmoliaptis V, Mallon DH, Chen Y, Bolton EM, Bradley JA, Taylor CJ. Alloantibody responses after renal transplant failure can be better predicted by donor-recipient HLA amino acid sequence and physicochemical disparities than conventional HLA matching. *Am J Transplant.* (2016) 16:2139–47. doi: 10.1111/ajt.13707
  34. Kosmoliaptis V, Bradley JA, Sharples LD, Chaudhry A, Key T, Goodman RS, et al. Predicting the immunogenicity of human leukocyte antigen class I alloantigens using structural epitope analysis determined by HLA Matchmaker. *Transplantation* (2008) 85:1817–25. doi: 10.1097/TP.0b013e31817441d6
  35. Pape KA, Taylor JJ, Maul RW, Gearhart PJ, Jenkins MK. Different B cell populations mediate early and late memory during an endogenous immune response. *Science* (2011) 331:1203–7. doi: 10.1126/science.1201730
  36. Chen J, Yin H, Xu J, Wang Q, Edelblum KL, Sciammas R, et al. Reversing endogenous alloreactive B cell GC responses with anti-CD154 or CTLA-4Ig. *Am J Transplant.* (2013) 13:2280–92. doi: 10.1111/ajt.12350
  37. Chen J, Wang Q, Yin D, Vu V, Sciammas R, Chong AS. Cutting edge: CTLA-4Ig inhibits memory B cell responses and promotes allograft survival in sensitized recipients. *J Immunol.* (2015) 195:4069–73. doi: 10.4049/jimmunol.1500940
  38. Honjo K, Yan Xu X, Kapp JA, Bucy RP. Evidence for cooperativity in the rejection of cardiac grafts mediated by CD4 TCR Tg T cells specific for a defined alloepitope. *Am J Transplant.* (2004) 4:1762–8. doi: 10.1046/j.1600-6143.2004.00596.x
  39. Lovegrove E, Pettigrew GJ, Bolton EM, Bradley JA. Epitope mapping of the indirect T cell response to allogeneic class I mhc: sequences shared by donor and recipient MHC may prime T cells that provide help for alloantibody production. *J Immunol.* (2001) 167:4338–44. doi: 10.4049/jimmunol.167.8.4338
  40. Bender J, Mitchell T, Kappler J, Marrack P. CD4+ T cell division in irradiated mice requires peptides distinct from those responsible for thymic selection. *J Exp Med.* (1999) 190:367–74. doi: 10.1084/jem.190.3.367
  41. Brandle D, Joergensen J, Zenke G, Burki K, Hof RP. Contribution of donor-specific antibodies to acute allograft rejection: evidence from B cell-deficient mice. *Transplantation* (1998) 65:1489–93. doi: 10.1097/00007890-199806150-00014
  42. Taylor AL, Negus SL, Negus M, Bolton EM, Bradley JA, Pettigrew GJ. Pathways of helper CD4 T cell allorecognition in generating alloantibody and CD8 T cell alloimmunity. *Transplantation* (2007) 83:931–7. doi: 10.1097/01.tp.0000257960.07783.e3
  43. Pietra BA, Wiseman A, Bolwerk A, Rizeq M, Gill RG. CD4 T cell-mediated cardiac allograft rejection requires donor but not host MHC class II. *J Clin Invest.* (2000) 106:1003–10. doi: 10.1172/JCI10467
  44. Kapessidou Y, Habran C, Buonocore S, Flamand V, Barvais L, Goldman M, et al. The replacement of graft endothelium by recipient-type cells conditions allograft rejection mediated by indirect pathway CD4+ T cells. *Transplantation* (2006) 82:582–91. doi: 10.1097/01.tp.0000184444.93108.d1
  45. Ali JM, Bolton EM, Bradley JA, Pettigrew GJ. Allorecognition pathways in transplant rejection and tolerance. *Transplantation* (2013) 96:681–8. doi: 10.1097/TP.0b013e31829853ce
  46. Harper IG, Ali JM, Harper SJ, Wlodek E, Alsughayyir J, Negus MC, et al. Augmentation of recipient adaptive alloimmunity by donor passenger lymphocytes within the transplant. *Cell Rep.* (2016) 15:1214–27. doi: 10.1016/j.celrep.2016.04.009
  47. Berry GJ, Burke MM, Andersen C, Bruneval P, Fedrigo M, Fishbein MC, et al. The 2013 international society for heart and lung transplantation working formulation for the standardization of nomenclature in the pathologic diagnosis of antibody-mediated rejection in heart transplantation. *J Heart Lung Transplant.* (2013) 32:1147–62. doi: 10.1016/j.healun.2013.08.011
  48. Crotty S, Kersh EN, Cannons J, Schwartzberg PL, Ahmed R. SAP is required for generating long-term humoral immunity. *Nature* (2003) 421:282–7. doi: 10.1038/nature01318
  49. Qi H, Cannons JL, Klauschen E, Schwartzberg PL, Germain RN. SAP-controlled T-B cell interactions underlie germinal centre formation. *Nature* (2008) 455:764–9. doi: 10.1038/nature07345
  50. Cannons JL, Qi H, Lu KT, Dutta M, Gomez-Rodriguez J, Cheng J, et al. Optimal germinal center responses require a multistage T cell:B cell adhesion process involving integrins, SLAM-associated protein, and CD84. *Immunity* (2010) 32:253–65. doi: 10.1016/j.immuni.2010.01.010
  51. Crotty S. T follicular helper cell differentiation, function, and roles in disease. *Immunity* (2014) 41:529–42. doi: 10.1016/j.immuni.2014.10.004
  52. Chhabra M, Alsughayyir J, Qureshi MS, Mallik M, Ali JM, Gamper I, et al. Germinal centre alloantibody responses mediate progression of chronic allograft injury. *Front Immunol.* (2019) 9:3038. doi: 10.3389/fimmu.2018.03038
  53. Paus D, Phan TG, Chan TD, Gardam S, Basten A, Brink R. Antigen recognition strength regulates the choice between extrafollicular plasma cell and germinal center B cell differentiation. *J Exp Med.* (2006) 203:1081–91. doi: 10.1084/jem.20060087
  54. Qureshi MS, Alsughayyir J, Chhabra MC, Ali JM, Goddard M, Devine C, et al. Data regarding transplant induced germinal center humoral autoimmunity. *J Autoimmun.* (2018). doi: 10.1016/j.jib.2018.12.078
  55. Qureshi MS, Alsughayyir J, Chhabra MC, Ali JM, Goddard M, Devine C, et al. Germinal center humoral autoimmunity independently mediates progression of allograft vasculopathy. *J Autoimmun.* (2018). doi: 10.1016/j.jaut.2018.11.006
  56. Chan TD, Gatto D, Wood K, Camidge T, Basten A, Brink R. Antigen affinity controls rapid T-dependent antibody production by driving the expansion rather than the differentiation or extrafollicular migration of early plasmablasts. *J Immunol.* (2009) 183:3139–49. doi: 10.4049/jimmunol.0901690
  57. Everly MJ, Eversly JJ, Arend LJ, Brailey P, Susskind B, Govil A, et al. Reducing *de novo* donor-specific antibody levels during acute rejection diminishes renal allograft loss. *Am J Transplant.* (2009) 9:1063–71. doi: 10.1111/j.1600-6143.2009.02577.x
  58. Gerlach UA, Vogt K, Schlickeiser S, Meisel C, Streitz M, Kunkel D, et al. Elevation of CD4+ differentiated memory T cells is associated with acute cellular and antibody-mediated rejection after liver transplantation.

- Transplantation* (2013) 95:1512–20. doi: 10.1097/TP.0b013e318290de18
59. Gorbacheva V, Fan R, Fairchild RL, Baldwin WM III, Valujskikh A. Memory CD4 T cells induce antibody-mediated rejection of renal allografts. *J Am Soc Nephrol.* (2016) 27:3299–307. doi: 10.1681/ASN.2015080848
60. Adams AB, Pearson TC, Larsen CP. Heterologous immunity: an overlooked barrier to tolerance. *Immunol Rev.* (2003) 196:147–60. doi: 10.1046/j.1600-065X.2003.00082.x
61. Adams AB, Williams MA, Jones TR, Shirasugi N, Durham MM, Kaech SM, et al. Heterologous immunity provides a potent barrier to transplantation tolerance. *J Clin Invest.* (2003) 111:1887–95. doi: 10.1172/JCI200317477

**Conflict of Interest Statement:** The authors declare that the research was conducted in the absence of any commercial or financial relationships that could be construed as a potential conflict of interest.

Copyright © 2019 Alsughayyir, Chhabra, Qureshi, Mallik, Ali, Gamper, Moseley, Peacock, Kosmoliaptsis, Goddard, Linterman, Motallebzadeh and Pettigrew. This is an open-access article distributed under the terms of the Creative Commons Attribution License (CC BY). The use, distribution or reproduction in other forums is permitted, provided the original author(s) and the copyright owner(s) are credited and that the original publication in this journal is cited, in accordance with accepted academic practice. No use, distribution or reproduction is permitted which does not comply with these terms.