

A biomarker-based biological age in UK Biobank: composition and prediction of mortality and hospital admissions

Mei Sum Chan MMORSE¹, Matthew Arnold PhD^{1,2}, Alison Offer PhD¹, Imen Hammami PhD¹, Marion Mafham MD¹, Jane Armitage FRCP^{1,3}, Rafael Perera DPhil⁴, Sarah Parish DPhil*^{1,3}

¹Nuffield Department of Population Health, University of Oxford, Oxford, United Kingdom

²British Heart Foundation Cardiovascular Epidemiology Unit, Department of Public Health and Primary Care, University of Cambridge, Cambridge, United Kingdom

³MRC Population Health Research Unit, University of Oxford, Oxford, United Kingdom

⁴Nuffield Department of Primary Health Care Sciences, University of Oxford, Oxford, United Kingdom

*** Corresponding author details:**

Professor Sarah Parish DPhil

MRC Population Health Research Unit, Nuffield Department of Population Health, Old Road Campus, Roosevelt Dr, Oxford OX3 7LF

E-mail sarah.parish@ndph.ox.ac.uk

Abstract

BACKGROUND: Chronological age is the strongest risk factor for most chronic diseases. Developing a biomarker-based age and understanding its most important contributing biomarkers may shed light on the effects of age on later life health and inform opportunities for disease prevention.

METHODS: A subpopulation of 141,254 individuals healthy at baseline were studied, from among 480,019 UK Biobank participants aged 40-70 recruited in 2006-2010, and followed up for 6-12 years via linked death and secondary care records. Principal components of 72 biomarkers measured at baseline were characterised and used to construct sex-specific composite biomarker ages using the Klemera Doubal method, which derived a weighted sum of biomarker principal components based on their linear associations with chronological age. Biomarker importance in the biomarker ages was assessed by the proportion of the variation in the biomarker ages that each explained. The proportions of the overall biomarker and chronological age effects on mortality and age-related hospital admissions explained by the biomarker ages were compared using likelihoods in Cox proportional hazard models.

RESULTS: Reduced lung function, kidney function, reaction time, insulin-like growth factor 1, hand grip strength and higher blood pressure were key contributors to the derived biomarker age in both men and women. The biomarker ages accounted for >65% and >84% of the apparent effect of age on mortality and hospital admissions for the healthy and whole populations, respectively, and significantly improved prediction of mortality ($p < 0.001$) and hospital admissions ($p < 1 \times 10^{-10}$) over chronological age alone.

CONCLUSIONS: This study suggests that a broader, multi-system approach to research and prevention of diseases of ageing warrants consideration.

Key words: Epidemiology, outcomes, preventative health care, risk factors

Introduction

Chronological age is the strongest risk factor for most chronic diseases that limit healthy lifespan, but individuals may age biologically at different rates (1), characterised by differential rates of disease accumulation and frailty onset. Understanding the contributors to biological ageing could lead to opportunities for early prevention of later life disease (2) and limiting the disease burden associated with ageing populations.

A commonly used approach to identifying risk of accelerated ageing and reduced lifespan is to form a risk score by regressing mortality on risk factors (2, 3). However, this tends to identify people who have known health conditions (2). It would be particularly advantageous to be able to identify accelerated ageing in apparently healthy people for primary prevention of diseases of ageing (4). Another approach involves estimating a person's biological age from the age that their biomarker profile typically reflects. In a review of estimation methods for biological ages (5), studies that compared different estimation methods (6-8) favoured the Klemera Doubal method (KDM), which derives a weighted sum of biomarkers based on the strengths of their associations with chronological age (9). Additionally, in a more recent study in an older Singaporean population, biological age estimated using KDM was found to be more predictive of mortality and frailty than biological ages estimated using machine learning methods (8). When estimating a KDM biological age, chronological age may or may not be treated as a constituent 'biomarker'; if it is not a constituent 'biomarker', the predictive value of the derived biological age for health outcomes can be compared with that of chronological age. KDM can be implemented using principal components of biomarkers instead of individual biomarkers (6), avoiding the problem of over-weighting towards multiple correlated biomarkers.

The UK Biobank is a richly phenotyped resource with 0.5 million participants (10) that provides an unrivalled opportunity to investigate earlier stages of ageing through biological, lifestyle and environmental factors easily measured at scale, compared to previous clinical biomarker-based studies of biological ageing typically based on 100-10,000 participants with panels of fewer than 30 biomarkers (5). A substantial middle-aged and apparently healthy subpopulation of the UK Biobank can be identified, to assess the prognostic capability of a biomarker age for subsequent health and to reduce reverse causality from prior health or medication use affecting biomarker levels.

This study aims to focus on healthy individuals and: 1. estimate sex-specific biomarker ages in the UK Biobank using the KDM, 2. identify the main biomarker determinants of the biomarker ages, and 3. investigate the relationship between the biomarker age and chronological age in the prediction of mortality from chronic diseases and age-related hospital admissions.

Methods

Study population

The UK Biobank recruited 0.5 million participants across the UK aged 40-70 for baseline assessment in 2006-2010. Information on sociodemographic characteristics, self-reported health behaviours and medication was recorded. Linkage to Hospital Episode Statistics (HES) and national death registries provided prior and prospective information on secondary care outcomes and date and cause of death (Appendix 1 and 2) (10). This study was covered by the general ethical approval for UK Biobank studies from the NHS National Research Ethics Service on 17th June 2011 (Ref 11/NW/0382).

After data cleaning (Appendix 1 and eFigure 1), 480,019 participants followed up for 6-12 years via death registry and HES records were included (eFigure 1). In order to reduce reverse causality, this study focused on the 141,254 people healthy at baseline, who had no chronic disease medications, good health, steady/brisk walk speed, never/ex smoker (as self-reported); and 0-2 secondary care episodes prior to recruitment, and no prior chronic age-related disease or hip/wrist fracture (in secondary care records) (Appendix 1).

Statistical Analyses

Among 110 physical and biochemical biomarkers commonly measured in clinical settings, 72 biomarkers met quality control standards (Appendix 2). Trends of each biomarker with chronological age were visually assessed for linearity (Appendix 3A). Principal component analysis with varimax rotation (6) was used to represent the 72 biomarkers as linearly uncorrelated principal components, from which the 51 with eigenvalues >0.33 (more than 1/3 of the average variation described by each biomarker) were taken forward and characterised based on their constituent biomarkers with the largest factor loadings (Appendix 3B). The varimax rotation attempts to rotate these components into a simple, easily interpretable structure where only one or a few biomarkers have high loadings in each component, and resulted in many biomarker principal components having only a single biomarker strongly loaded onto them. As would be expected, the principal components for adiposity, lung function, blood pressure and blood lipids had multiple biomarkers strongly loaded on to them (eFigure 3).

Biomarker ages were estimated in the healthy population separately for each sex, using the KDM (9) on the 51 principal components, without including chronological age as a biomarker (Appendix 3B). The proportion of variation in chronological age attributed to the biomarker age (R^2) was estimated and biomarker principal components were ranked by their importance, measured by the proportion of variance in the biomarker ages that they each explained (Appendix 3C).

Two general health outcomes were constructed from HES and death records: death from chronic disease (excluding infectious diseases, pregnancy, congenital malformations and external causes) (11) and age-related non-fatal hospital admissions (the subset of those types of admission diagnoses in a published hospital frailty risk score (12) that were age-related in

the UK Biobank; Appendix 2 and eTable 2). The proportion of the overall biomarker and chronological age effect on hospital admission risk and mortality that was explained by each biomarker age was also estimated, by comparing the log-likelihoods from these Cox models (Appendix 3D), and estimating p-values for the addition of the biomarker age by likelihood ratio tests.

Calibration of the biomarker ages to chronological age was undertaken by plotting the mean biomarker ages for each 2.5-year chronological age group. Risk calibration of biomarker ages with each health outcome was assessed by comparing the Kaplan-Meier survival curves of participants with a biomarker age at least 5 years younger, similar to, and at least 5 years older than their chronological age.

The predictive powers of chronological age and the biomarker age for each health outcome were further characterised by computing Harrell's C-indices (measures of statistical discrimination similar to the area under the receiver operating curve; Appendix 3D) which were calculated both unadjusted and with adjustment for Index of Multiple Deprivation (IMD) 2010 quintile, smoking status, alcohol consumption and assessment centre. As a sensitivity test, prediction of hospital admissions by biomarker age was compared with a benchmark of prediction by a mortality score similar to those proposed by previous studies (2, 3), derived using stepwise Cox regression on the 51 biomarker principal components (Appendix 3B).

As a sensitivity analysis to investigate whether a smaller (more practical) biomarker panel would suffice, analyses among healthy participants were repeated using the main constituent biomarkers in the 10 most important biomarker principal components in the biomarker ages for each sex. In addition, to aid comparison with previous studies, analyses using the full panel were also undertaken in the whole population.

Guidelines for Transparent Reporting of a multivariable prediction model for Individual Prognosis Or Diagnosis (TRIPOD) (13) were followed.

Results

Study characteristics

Of the 480,019 participants, 141,254 (29.4%) were in the healthy subpopulation (Table 1). During a median follow up period of 8.7 years for mortality and 8.0 years for hospital admissions, among healthy participants, 1.7% died from chronic diseases and 16.0% who had not been admitted to hospital with an age-related diagnosis prior to baseline were admitted with such a diagnosis during follow up (Table 1); the corresponding percentages among the whole population were 3.9% and 23.1%, respectively. Sociodemographic patterns and the proportions of participants healthy at baseline were similar between sexes.

Biomarker characteristics

In the healthy subset, the relationships of most candidate biomarkers with chronological age were broadly linear or flat (eFigure 2). Lung function biomarkers, systolic blood pressure, cystatin C and reaction time had the strongest linear relationships with age (eFigure 2). In the whole population body mass index (BMI), low density lipoprotein cholesterol (LDL-C) and diastolic blood pressure had clear inverse U-shaped relationships with age but these were attenuated in the healthy subpopulation. A few biomarkers (LDL-C, heel bone density, calcium, alkaline phosphatase and phosphate) displayed substantially different trends between sexes, supporting the need to model within sex-specific strata (eFigure 2).

Biomarker importance in biomarker ages

The coefficients for the biomarker principal components in the estimated biomarker ages are listed in eTable 3. The biomarker ages described 44.0% and 51.3% of the variation in chronological age for healthy men and women respectively. Reduced lung function featured most strongly (Figure 1), describing 12.4% (men) and 10.3% (women) of the variation in the biomarker ages (eTable 4). Higher cystatin C, slower reaction time, lower insulin-like growth factor-1 (IGF-1), lower hand grip strength, and higher blood pressure also featured strongly for both sexes; while lower albumin, higher sex hormone-binding globulin and lower muscle mass biomarkers featured strongly for men; and higher levels of alkaline phosphatase, LDL-C and apolipoprotein B and HbA1c for women. Multiple body systems were represented by these biomarkers (eTable 1).

Relationship between biological and chronological age

The biomarker ages were well calibrated as they matched healthy participants' chronological ages on average (eFigure 4). Adding biomarker ages to the prediction models with chronological age statistically significantly improved model fit (for mortality/hospital admissions: $p < 1 \times 10^{-10}$ / $p < 1 \times 10^{-10}$ in men; $p < 0.001$ / $p < 1 \times 10^{-10}$ in women) in unadjusted analyses.

More importantly, averaged across sexes, the biomarker ages described 67% and 65% of the overall biomarker age and chronological age effect on mortality and hospital admissions respectively (Figure 2A) in unadjusted analyses. Constructing the biomarker ages from the reduced panels of biomarkers most strongly loaded onto the most important 10 biomarker components noted above (in Figure 1) decreased the proportion explained by biomarkers to 54% and 51% for each respective outcome in men, but made little difference for women (Figure 2B and eTable 5). These proportions were similar when adjusted for sociodemographic factors and health behaviours (eTable 5).

The biomarker ages identified 17.1% of healthy participants with a biomarker age ≥ 5 years younger and 16.9% with a biomarker age ≥ 5 years older than their chronological age ('biologically younger' vs 'biologically older' participants). On aggregate, the mortality and hospital admission rates were highest in individuals who were biologically older and lowest in those who were biologically younger than their chronological age (Figure 3). At 8 years

after the baseline date (approximate median follow up), 1%/15% of biologically younger participants had died from chronic disease/had an age-related hospital admission, respectively compared to 2%/18% of biologically older participants (based on the survival estimates in Figure 3). Log-rank tests of these survival differences had p-values $<1 \times 10^{-15}$.

Predictive power of biomarker ages

In the healthy population, adding the biomarker age to a prediction model with chronological age increased the C-indices for mortality/hospital admission only slightly (0.008/0.003 in men, 0.002/0.001 in women; Table 2A). C-indices for the prediction of hospital admissions were greater for the biomarker ages than for the benchmark mortality score (difference in C-indices: 0.111/0.068 in men/women; Table 2A). Sociodemographic factors and health behaviours, which are adversely associated with health outcomes, were also associated with higher biomarker ages (living in an area classified within the most vs least deprived IMD quintile was associated with an extra 3.6/2.3 years of biomarker age for men/women after adjusting for chronological age alone), but adjustment for these factors did not substantially attenuate the differences in C-indices associated with adding the biomarker age into the prediction models with chronological age for men and women (Table 2B).

Results for the whole UK Biobank population

In analyses run on the whole population, the importance of biomarker principal components in the biomarker ages was similar to that in healthy participants (eFigure 5 and Figure 1). The standard deviations of the differences between biomarker ages and chronological ages (9.7 years in men, 8.8 years in women) were slightly higher than those for the healthy subpopulation (8.7 years in men, 7.7 years in women). The biomarker ages explained greater proportions of the chronological age effects on mortality and hospital admissions in the whole population (91%/84% for mortality/hospital admission respectively, averaged across sexes; eFigure 6 vs Figure 2). Adding biomarker ages to the prediction models with chronological age statistically significantly improved model fit ($p < 1 \times 10^{-10}$ for both health outcomes and both sexes) in unadjusted analyses. Correspondingly, adding the biomarker ages to a prediction model with chronological age increased the C-indices for mortality/hospital admission (0.056/0.014 in men, 0.026/0.011 in women) more substantially than in the healthy population (eTable 6 vs Table 2).

Discussion

This study found that the biomarker ages consisting of markers of impaired function in a range of organs accounted for >65% and >84% of the apparent effect of age on mortality and hospital admissions in the healthy and whole populations, respectively.

Key biomarker determinants of biomarker ages and their relationships with chronological age

Lung, kidney, cognitive and liver function, IGF-1, hand grip strength and blood pressure were key contributors to the biomarker ages for both sexes, while sex hormone-binding

globulin and muscle mass in men, and cardiovascular function and HbA1c in women were also important.

These top-ranking biomarkers in this UK population generally matched those in a Singaporean study (8) and slight differences by sex were seen in both populations. However, these lung and renal function biomarkers were not investigated in the study comparing Canadian, South Korean and Eastern European biological ages, which instead found that the top-ranking blood-based biomarkers varied by population and sex (14). Studies of ageing biomarkers also found that lung and renal biomarkers were top-ranking determinants of functional decline (15) and variation in age-related traits (16). The present study provides additional detail on the relative importance on ageing of biomarkers within body system groups, such as finding cystatin C to be more important than other renal biomarkers (creatinine and creatinine-based estimated glomerular filtration rate [eGFR]) (17), as previous studies each assessed only one of these biomarkers (8, 14-16).

Several key biomarkers in this study (blood pressure, blood lipids, height and lung function) have each been shown to be associated with a range of age-related diseases observationally, and in some cases causally in randomised trials and Mendelian randomisation studies (eTable 7). Associations of other key biomarkers such as cystatin C and hand grip strength have been less extensively researched, but found to be associated with mortality or cardiovascular outcomes (17-21). Blood pressure (10th most important for healthy men and 8th for healthy women; Figure 1) is well-established as a modifiable and causal risk factor of cardiovascular disease (22).

Prediction in healthy versus unhealthier individuals

In unhealthy individuals, their disease status and hospital admissions will already provide information of their risk (23), whereas in apparently healthier individuals knowledge of a biomarker age is potentially more useful for identifying unrecognised health risks; furthermore knowledge of risk of non-fatal outcomes should provide a longer window for intervention and prevention than knowledge of mortality risk. The biomarker ages were substantially better than the benchmark mortality score in predicting age-related hospital admissions (Table 2), and in the whole UK Biobank, the improvement in predictive power for mortality of the biomarker ages over chronological age (Table 2) and the effect sizes of the biomarker ages were comparable to the improvements reported by previous studies of biological ages in US, Canadian and Singaporean populations (2, 7, 8, 25). The biomarker ages had only slightly greater variation in the whole vs the healthy population, but the predictive value of the biomarker ages was considerably greater when including unhealthier individuals (eTable 6, Table 2). Hence, this could reflect a diagnostic element of these biomarkers that is stronger in the less healthy individuals. Therefore, when comparing biological ages across different studies it is important to take into account the health and age profile of populations.

Comparison of an individual's biomarker age with their (unmodifiable) chronological age could provide a valuable means of communicating modifiable health risks, alongside their

detailed biomarker profile (26). A biomarker age could also augment a national prevention programme promoting clinical biomarker screening in a middle-aged population (27), after causal factors underlying its constituents have been established. The most important biomarkers in the biomarker ages were measured via blood biochemistry measurements, spirometry and body size measurements, which can be administered routinely in clinical settings. For women, it may be suitable to measure just 12 key biomarkers (7 blood-based and 5 physical measurements; Figure 2B) across 7 body systems to assess biomarker ageing, as relatively little explanatory and predictive value was compromised. A Healthy Aging Index constructed from a similar but smaller panel of biomarkers (blood pressure, lung function, creatinine, fasting glucose and cognitive test biomarkers) was moderately predictive of mortality in a US population (28). Despite the successful use of clinical risk prediction tools such as ‘heart age’ and ‘lung age’ in clinical care (29), there is little evidence as yet of implementation of an overall biological age, and proposals to use it in drug development (11, 14, 30) and clinical care (2, 5, 30) may be longer-term uses.

Strengths and limitations of this study

The estimation methods used assumed that biomarkers with the strongest linear relation to chronological age contribute most to a biomarker age. Lung function biomarkers, systolic blood pressure, cystatin C and reaction time had the strongest linear relationships with age (eFigure 2), and therefore contributed substantially to variation in the biomarker ages. However, a limitation of this approach is that not all biomarkers strongly associated with age may be reflective of clinical disease risk and, conversely, any risk factors for ageing diseases that do not themselves have a strong relationship with age may have been under-represented by the KDM. For example, BMI has been causally linked to 30 diseases (including many age-related diseases) (31) but the general adiposity component was only 28th most important for men and 26th for women (eTable 4). Likewise, lipid-related cardiovascular biomarkers, LDL-C and apolipoprotein B are causally linked to atherosclerotic cardiovascular disease in men and women (32), but were only important in the biomarker age for women (Figure 1).

This approach was based on the cross-sectional associations of biomarkers with age, available for a large cohort, because repeat biomarker measurements (at one other time) were only available for a small subset of participants (10). However, in a study with multiple longitudinal measurements, the Pace of Aging, estimated from longitudinal changes in biomarkers over time, was shown to correlate with biological age estimated later (24).

The compositions of the derived biomarker ages were limited by the range of biomarkers available, and unlike the cohorts examined by studies of promising ageing biomarkers (1, 33, 34), the UK Biobank is not specifically a gerontological resource. Cohort effects in this population are difficult to disentangle, and may influence trends in body size. Hence, height (one of the top 15 most important biomarkers; Figure 1) may be acting as a proxy for cohort effects. Biomarker trends with age in the UK Biobank were not all completely linear (eFigure 2), but a previous study has shown that incorporating non-linearity and non-monotonicity (in limited functional forms) only slightly improved the accuracy of estimated biological age components, and was computationally complex (35). Moreover, biological ages estimated

using KDM were found to be more predictive of mortality and frailty than biological ages estimated using machine learning methods in an older Singaporean population (8), and the only clinical biomarker-based age (14) identified by a review of deep learning biological ageing scores (36) did not explore the improvement in predictive power from using a non-linear estimation method. The epidemiological reliability of the present analyses was increased by focusing on a healthy subpopulation, using biomarker principal components and adherence to clinical risk prediction reporting guidelines (13) (eTable 8).

Conclusions

Biomarker ages in men and women consisting of clinical biomarkers reflecting functionality of a range of organs accounted for a substantial proportion of the effects of age on disease and hospital admissions in the UK Biobank. They have the potential to be used and evaluated as a broader-based approach to risk identification and prevention than individual biomarkers. Of the most important biomarkers contributing to the derived biomarker ages, cardiometabolic biomarkers have well-studied causal associations with mortality and cardiovascular disease, but further research is needed to identify modifiable causal factors underlying all constituents of biological ages, for a range of age-related diseases.

Accepted Manuscript

Funding

This work was supported by grants to University of Oxford from the UK Medical Research Council through its funding of the MRC Population Health Research Unit (MC_U137686853, MC_UU_00017/3 and MC_UU_00017/5); and the British Heart Foundation. MSC was funded by the Nuffield Department of Population Health. MA was funded by a British Heart Foundation Programme Grant (RG/18/13/33946). RP was funded by the NIHR Oxford Biomedical Research Centre Program, the NIHR Collaboration for Leadership in Health Research and Care (CLARHC) Oxford, the NIHR Program for Applied Research, the NIHR Health Protection Research Unit Gastrointestinal Infections Group and the NIHR Diagnostic Evidence Co-operative. The funders had no role in study design, data collection and analysis, decision to publish, or preparation of the manuscript.

Acknowledgements

MSC designed the analysis, analysed the data and drafted the manuscript. MA, RP and SP critically revised the analysis plan and manuscript. All authors interpreted the results and contributed to the final manuscript.

This research used the UK Biobank resource (application number 8835). We thank the participants of UK Biobank for their contribution to the resource. The work of MA was supported by core funding from: the UK Medical Research Council (MR/L003120/1), the British Heart Foundation (RG/13/13/30194; RG/18/13/33946) and the National Institute for Health Research [Cambridge Biomedical Research Centre at the Cambridge University Hospitals NHS Foundation Trust]. The views expressed are those of the authors and not necessarily those of the NHS, the NIHR or the Department of Health and Social Care.

Conflict of interest

None.

Data Availability Statement

The underlying data is open access through application to the UK Biobank, and materials and methods will be made freely available through the UK Biobank as part of this project.

References

1. Jylhava J, Pedersen NL, Hagg S. Biological Age Predictors. *EBioMedicine*. 2017;**21**:29-36. doi: 10.1016/j.ebiom.2017.03.046
2. Liu Z, Kuo P-L, Horvath S, Crimmins E, Ferrucci L, Levine M. A new aging measure captures morbidity and mortality risk across diverse subpopulations from NHANES IV: A cohort study. *PLoS Med*. 2018;**15**:e1002718. doi: 10.1371/journal.pmed.1002718
3. Ganna A, Ingelsson E. 5 year mortality predictors in 498,103 UK Biobank participants: a prospective population-based study. *Lancet*. 2015;**386**:533-540. doi: 10.1016/s0140-6736(15)60175-1
4. Hamczyk MR, Nevado RM, Baretino A, Fuster V, Andrés V. Biological Versus Chronological Aging. *J Am Coll Cardiol*. 2020;**75**:919. doi: 10.1016/j.jacc.2019.11.062
5. Jia L, Zhang W, Chen X. Common methods of biological age estimation. *Clin Interv Aging*. 2017;**12**:759-772. doi: 10.2147/CIA.S134921
6. Cho IH, Park KS, Lim CJ. An empirical comparative study on biological age estimation algorithms with an application of Work Ability Index (WAI). *Mech Ageing Dev*. 2010;**131**:69-78. doi: 10.1016/j.mad.2009.12.001
7. Levine ME. Modeling the rate of senescence: can estimated biological age predict mortality more accurately than chronological age? *J Gerontol A Biol Sci Med Sci*. 2013;**68**:667-674. doi: 10.1093/gerona/gls233
8. Zhong X, Lu Y, Gao Q, Nyunt MSZ, Fulop T, Monterola CP, *et al*. Estimating Biological Age in the Singapore Longitudinal Aging Study. *J Gerontol A Biol Sci Med Sci*. 2019. doi: 10.1093/gerona/glz146
9. Klemra P, Doubal S. A new approach to the concept and computation of biological age. *Mech Ageing Dev*. 2006;**127**:240-248. doi: 10.1016/j.mad.2005.10.004
10. Sudlow C, Gallacher J, Allen N, Beral V, Burton P, Danesh J, *et al*. UK Biobank: An Open Access Resource for Identifying the Causes of a Wide Range of Complex Diseases of Middle and Old Age. *PLoS Med*. 2015;**12**:e1001779. doi: 10.1371/journal.pmed.1001779
11. Yoo J, Kim Y, Cho ER, Jee SH. Biological age as a useful index to predict seventeen-year survival and mortality in Koreans. *BMC Geriatr*. 2017;**17**:7. doi: 10.1186/s12877-016-0407-y
12. Gilbert T, Neuburger J, Kraindler J, Keeble E, Smith P, Ariti C, *et al*. Development and validation of a Hospital Frailty Risk Score focusing on older people in acute care settings using electronic hospital records: an observational study. *The Lancet*. 2018;**391**:1775-1782. doi: 10.1016/S0140-6736(18)30668-8
13. Collins GS, Reitsma JB, Altman DG, Moons KGM. Transparent Reporting of a multivariable prediction model for Individual Prognosis Or Diagnosis (TRIPOD): The TRIPOD Statement. *Ann Intern Med*. 2015;**162**:55-63. doi: 10.7326/M14-0697
14. Mamoshina P, Kochetov K, Putin E, Cortese F, Aliper A, Lee WS, *et al*. Population specific biomarkers of human aging: a big data study using South Korean, Canadian and Eastern European patient populations. *J Gerontol A Biol Sci Med Sci*. 2018. doi: 10.1093/gerona/gly005
15. Newman AB, Sanders JL, Kizer JR, Boudreau RM, Odden MC, Zeki Al Hazzouri A, *et al*. Trajectories of function and biomarkers with age: the CHS All Stars Study. *Int J Epidemiol*. 2016;**45**:1135-1145. doi: 10.1093/ije/dyw092
16. Menni C, Kastenmüller G, Petersen AK, Bell JT, Psatha M, Tsai P-C, *et al*. Metabolomic markers reveal novel pathways of ageing and early development in human populations. *Int J Epidemiol*. 2013;**42**:1111-1119. doi: 10.1093/ije/dyt094

17. Shlipak MG, Sarnak MJ, Katz R, Fried LF, Seliger SL, Newman AB, *et al.* Cystatin C and the Risk of Death and Cardiovascular Events among Elderly Persons. *N Engl J Med.* 2005;**352**:2049-2060. doi: 10.1056/NEJMoa043161
18. Shlipak MG, Matsushita K, Arnlov J, Inker LA, Katz R, Polkinghorne KR, *et al.* Cystatin C versus creatinine in determining risk based on kidney function. *N Engl J Med.* 2013;**369**:932-943. doi: 10.1056/NEJMoa1214234
19. van der Laan SW, Fall T, Soumare A, Teumer A, Sedaghat S, Baumert J, *et al.* Cystatin C and Cardiovascular Disease: A Mendelian Randomization Study. *J Am Coll Cardiol.* 2016;**68**:934-945. doi: 10.1016/j.jacc.2016.05.092
20. Farmer RE, Mathur R, Schmidt AF, Bhaskaran K, Fatemifar G, Eastwood SV, *et al.* Associations Between Measures of Sarcopenic Obesity and Risk of Cardiovascular Disease and Mortality: A Cohort Study and Mendelian Randomization Analysis Using the UK Biobank. *J Am Heart Assoc.* 2019;**8**:e011638. doi: 10.1161/jaha.118.011638
21. Ho FKW, Celis-Morales CA, Petermann-Rocha F, Sillars A, Welsh P, Welsh C, *et al.* The association of grip strength with health outcomes does not differ if grip strength is used in absolute or relative terms: a prospective cohort study. *Age Ageing.* 2019. doi: 10.1093/ageing/afz068
22. Ettehad D, Emdin CA, Kiran A, Anderson SG, Callender T, Emberson J, *et al.* Blood pressure lowering for prevention of cardiovascular disease and death: a systematic review and meta-analysis. *The Lancet.* 2016;**387**:957-967. doi: 10.1016/S0140-6736(15)01225-8
23. Partridge L, Deelen J, Slagboom PE. Facing up to the global challenges of ageing. *Nature.* 2018;**561**:45-56. doi: 10.1038/s41586-018-0457-8
24. Belsky DW, Caspi A, Houts R, Cohen HJ, Corcoran DL, Danese A, *et al.* Quantification of biological aging in young adults. *Proc Natl Acad Sci U S A.* 2015;**112**:E4104-4110. doi: 10.1073/pnas.1506264112
25. Mitnitski A, Howlett SE, Rockwood K. Heterogeneity of Human Aging and Its Assessment. *J Gerontol A Biol Sci Med Sci.* 2017;**72**:877-884. doi: 10.1093/gerona/glw089
26. Bio-Age. Bio-Age. <http://bio-age.co.kr/>. Accessed 1 August 2019.
27. Department of Health and Social Care. Advancing our health: prevention in the 2020s. London; 2019.
28. Sanders JL, Minster RL, Barnada MM, Matteini AM, Boudreau RM, Christensen K, *et al.* Heritability of and Mortality Prediction With a Longevity Phenotype: The Healthy Aging Index. *The Journals of Gerontology: Series A.* 2014;**69**:479-485. doi: 10.1093/gerona/glt117
29. Spiegelhalter D. How old are you, really? Communicating chronic risk through 'effective age' of your body and organs. *BMC Med Inform Decis Mak.* 2016;**16**:104. doi: 10.1186/s12911-016-0342-z
30. Cohen AA, Milot E, Li Q, Bergeron P, Poirier R, Dusseault-Belanger F, *et al.* Detection of a novel, integrative aging process suggests complex physiological integration. *PLoS One.* 2015;**10**:e0116489. doi: 10.1371/journal.pone.0116489
31. Hyppönen E, Mulugeta A, Zhou A, Santhanakrishnan VK. A data-driven approach for studying the role of body mass in multiple diseases: a phenome-wide registry-based case-control study in the UK Biobank. *The Lancet Digital Health.* 2019;**1**:e116-e126. doi: 10.1016/S2589-7500(19)30028-7
32. Ference BA, Ginsberg HN, Graham I, Ray KK, Packard CJ, Bruckert E, *et al.* Low-density lipoproteins cause atherosclerotic cardiovascular disease. 1. Evidence from genetic, epidemiologic, and clinical studies. A consensus statement from the European Atherosclerosis Society Consensus Panel. *Eur Heart J.* 2017;**38**:2459-2472. doi: 10.1093/eurheartj/ehx144

33. Justice JN, Ferrucci L, Newman AB, Aroda VR, Bahnson JL, Divers J, *et al.* A framework for selection of blood-based biomarkers for geroscience-guided clinical trials: report from the TAME Biomarkers Workgroup. *Geroscience*. 2018;**40**:419-436. doi: 10.1007/s11357-018-0042-y
34. Lara J, Cooper R, Nissan J, Ginty AT, Khaw KT, Deary IJ, *et al.* A proposed panel of biomarkers of healthy ageing. *BMC Med*. 2015;**13**:222. doi: 10.1186/s12916-015-0470-9
35. Pierson E, Koh PW, Hashimoto T, Koller D, Leskovec J, Eriksson N, *et al.* Inferring Multidimensional Rates of Aging from Cross-Sectional Data. *Proc Mach Learn Res*. 2019;**89**:97-107.
36. Zhavoronkov A, Li R, Ma C, Mamoshina P. Deep biomarkers of aging and longevity: from research to applications. *Aging*. 2019;**11**:10771-10780. doi: 10.18632/aging.102475

Accepted Manuscript

Table 1: Participant characteristics for the healthy subpopulation and the whole UK Biobank population

	Healthy subpopulation			Whole population		
	Persons	Men	Women	Persons	Men	Women
Participants (n)	141,254	65,869	75,385	480,019	219,248	260,771
Person-years at risk (millions)	1.2	0.56	0.64	4.12	1.87	2.25
Median age at baseline (years)	56.0	55.7	56.4	58.3	58.8	58.0
Age band at baseline in years (%)						
40-44	12.1	13.9	10.5	10.2	10.4	10.1
45-49	15.9	16.5	15.4	13.1	12.7	13.4
50-54	17.8	17.1	18.4	15.1	14.4	15.8
55-59	19.4	18.6	20.1	18.1	17.5	18.6
60-64	21.9	21.0	22.6	24.3	24.3	24.3
65-70	12.9	12.9	13.0	19.2	20.8	17.9
IMD 2010 quintile (%)						
Q1 (least deprived)	23.9	23.8	24.1	20.0	19.7	20.1
Q2	22.2	22.1	22.3	20.0	19.7	20.3
Q3	20.9	20.7	21.1	20.0	19.8	20.2
Q4	18.7	18.7	18.7	20.0	19.9	20.1
Q5 (most deprived)	14.3	14.7	13.9	20.0	20.9	19.3
Smoker status (%)						
Current	0.0	0.0	0.0	10.5	12.4	8.8
Previous	33.4	35.9	31.2	34.5	38.3	31.3
Never	66.6	64.1	68.8	54.5	48.8	59.4
No answer/missing	0.0	0.0	0.0	0.5	0.5	0.5
Alcohol consumption frequency (%)						
Never	5.5	4.5	6.5	8.0	6.3	9.5
Special occasions only	8.8	5.6	11.6	11.5	7.3	15.0
One to three times a month	10.5	8.6	12.3	11.1	8.9	13.0
Once or twice a week	27.3	27.2	27.4	25.8	25.9	25.7
Three or four times a week	26.8	29.5	24.5	23.1	26.1	20.5
Daily or almost daily	21.0	24.7	17.7	20.3	25.3	16.1
No answer/missing	0.0	0.0	0.0	0.2	0.2	0.2
Health events during follow up (n)						
Deaths from chronic disease	2,394	1,357	1,037	18,799	11,362	7,437
Prior age-related hospital admissions	6,206	2,953	3,253	74,811	35,401	39,410
Incident age-related hospital admissions	21,627	10,317	11,310	93,716	43,700	50,016

Note: IMD: Index of Multiple Deprivation.

Table 2: Harrell's C-indices (with standard errors) for each health outcome in the healthy UK Biobank subpopulation, biomarker age vs chronological age and biomarker age vs mortality score

(A) Unadjusted analysis

Outcome and age predictor	Healthy men	Healthy women
Mortality from chronic disease		
CA alone	0.712 (0.008)	0.667 (0.009)
BA alone	0.689 (0.008)	0.635 (0.009)
BA and CA	0.720 (0.008)	0.669 (0.009)
<i>Improvement of BA and CA over CA</i>	<i>0.008</i>	<i>0.002</i>
Age-related hospital admissions		
CA alone	0.636 (0.003)	0.606 (0.003)
BA alone	0.615 (0.003)	0.586 (0.003)
BA and CA	0.639 (0.003)	0.608 (0.003)
<i>Improvement of BA and CA over CA</i>	<i>0.003</i>	<i>0.001</i>
Mortality score	0.504 (0.003)	0.518 (0.003)
<i>Improvement of BA over mortality score</i>	<i>0.111</i>	<i>0.068</i>

(B) Adjusted for sociodemographic factors and health behaviours

Outcome and age predictor	Healthy men	Healthy women
Mortality from chronic disease		
CA alone	0.724 (0.008)	0.688 (0.009)
BA alone	0.702 (0.008)	0.660 (0.009)
BA and CA	0.731 (0.008)	0.690 (0.009)
<i>Improvement of BA and CA over CA</i>	<i>0.007</i>	<i>0.002</i>
Age-related hospital admissions		
CA alone	0.660 (0.003)	0.633 (0.003)
BA alone	0.640 (0.003)	0.614 (0.003)
BA and CA	0.662 (0.003)	0.634 (0.003)
<i>Improvement of BA and CA over CA</i>	<i>0.002</i>	<i>0.001</i>
Mortality score	0.574 (0.003)	0.571 (0.003)
<i>Improvement of BA over mortality score</i>	<i>0.066</i>	<i>0.043</i>

Note: CA: chronological age; BA: biomarker age. Analyses in (B) were adjusted for Index of Multiple Deprivation 2010 quintile, smoking status, alcohol consumption and assessment centre.

Table titles and figure captions

Table 1: Participant characteristics for the healthy subpopulation and the whole UK Biobank population

Table 2: Harrell's C-indices (with standard errors) for each health outcome in the healthy UK Biobank subpopulation, biomarker age vs chronological age and biomarker age vs mortality score

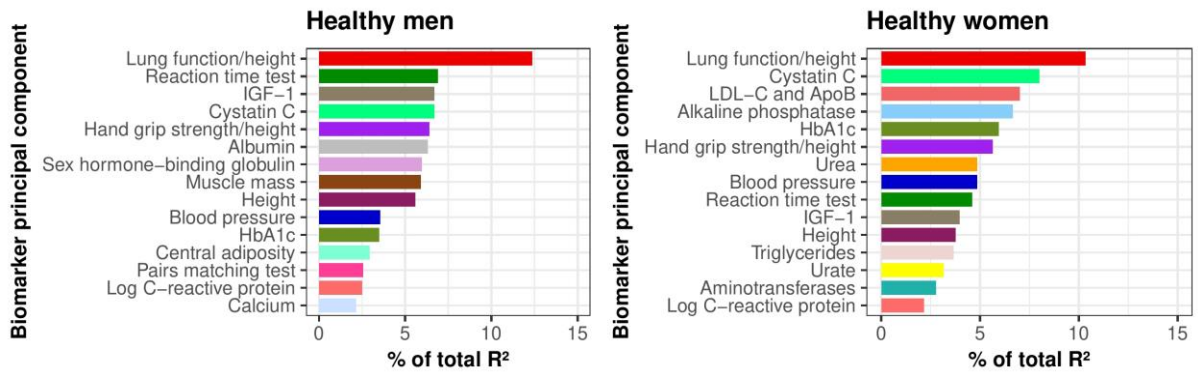
Figure 1: Importance of the top 15 biomarker principal components in the biomarker ages for healthy men and women. The percentage of R^2 denotes the percentage of variation in the biomarker age explained by each biomarker.

Figure 2: Relative contribution of biomarker ages and chronological age in explaining each health outcome, in the (A) main analysis and when (B) using the reduced biomarker panel, for healthy men and women. The reduced biomarker panel consists of: forced expiratory volume in 1s/height, forced vital capacity/height, reaction time, insulin growth factor 1, cystatin C, hand grip strength/height, systolic and diastolic blood pressure in both sexes; albumin, sex hormone-binding globulin, fat-free mass, standing height and sitting height in men; and low density lipoprotein cholesterol, alkaline phosphatase, HbA1c and urea in women. These were the primary biomarkers that loaded most strongly onto the 10 principal component biomarkers that were most important contributors to biomarker ages for each sex, plus diastolic blood pressure, forced vital capacity and sitting height because they were strongly loaded onto the same components (rotated factor loading >0.5) and could be measured at the same instance as the primary biomarkers.

Figure 3: Outcome-free survival of healthy men and healthy women for (A) mortality from chronic disease and (B) age-related hospital admissions, according to whether their biomarker age is younger, similar to or older than their chronological age. Note: BA: biomarker age; CA: chronological age.

Accepted Article

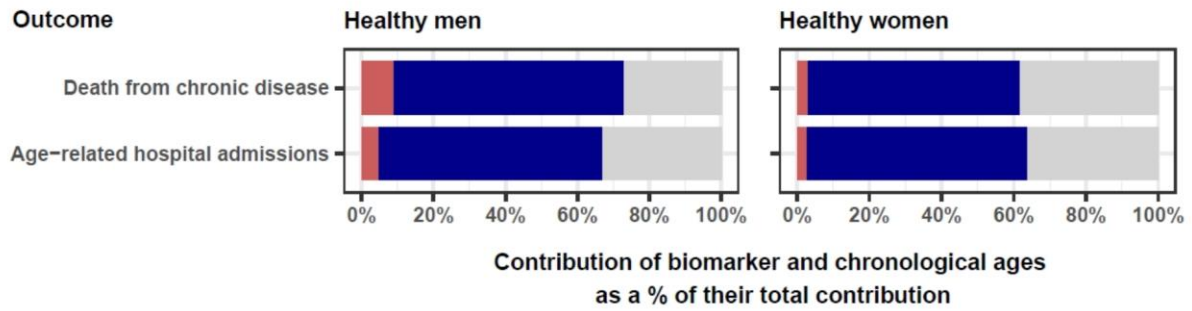
Figure 1



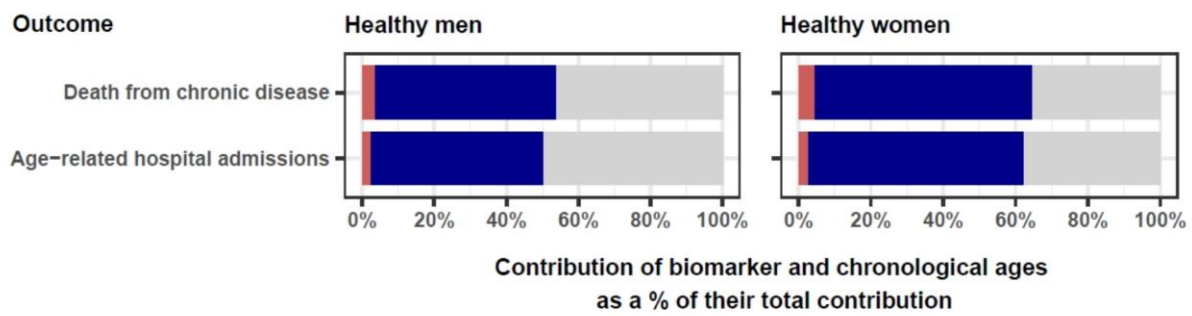
Accepted Manuscript

Figure 2

(A) Main analysis



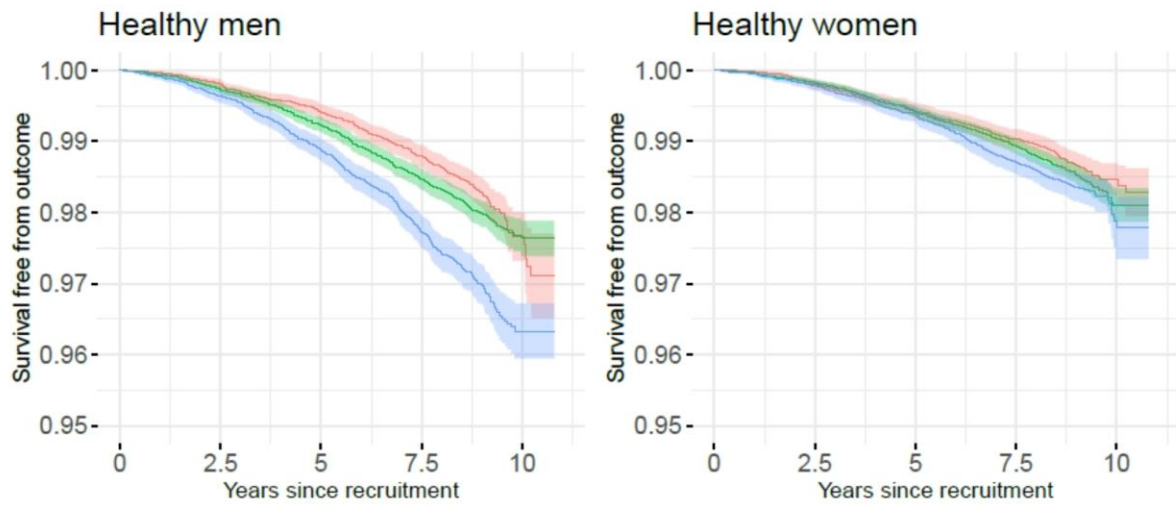
(B) Reduced biomarker panel



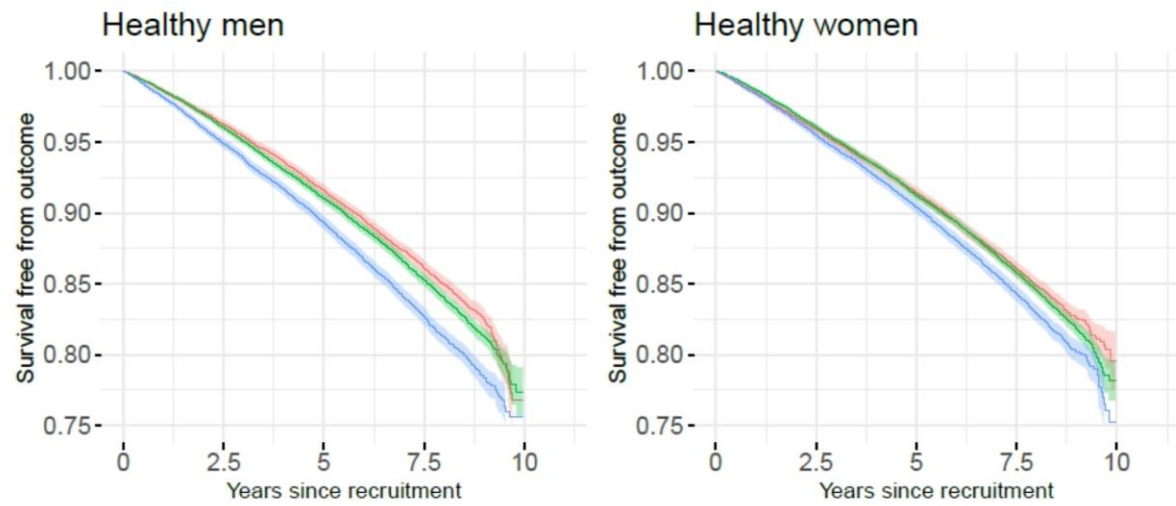
Accepted

Figure 3

(A) Mortality from chronic disease



(B) Age-related hospital admissions



Predicted risk group Kaplan-Meier curve and 95% confidence interval (shaded area):

- BA - CA < -5 years (Biologically younger)
- |BA - CA| < 5 years
- BA - CA > 5 years (Biologically older)

A