

Figure 3. Pooled effect estimates for regression coefficients with BMI z-scores, by CEBQ subscales (Parts A-H). **Part A.** Food responsiveness

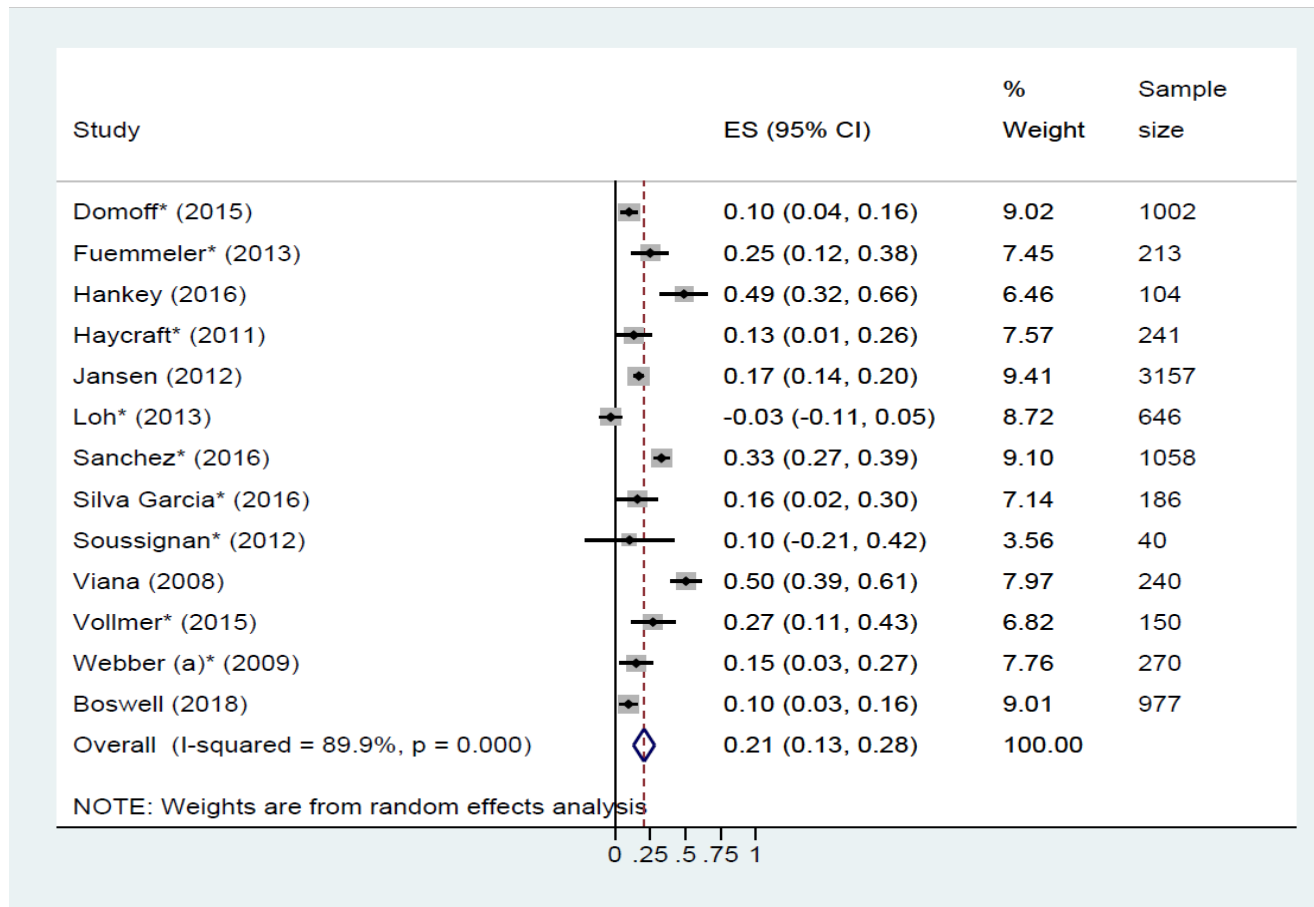


Figure 3. Pooled effect estimates for regression coefficients with BMI z-scores, by CEBQ subscales (continued). **Part B.** Enjoyment of Food

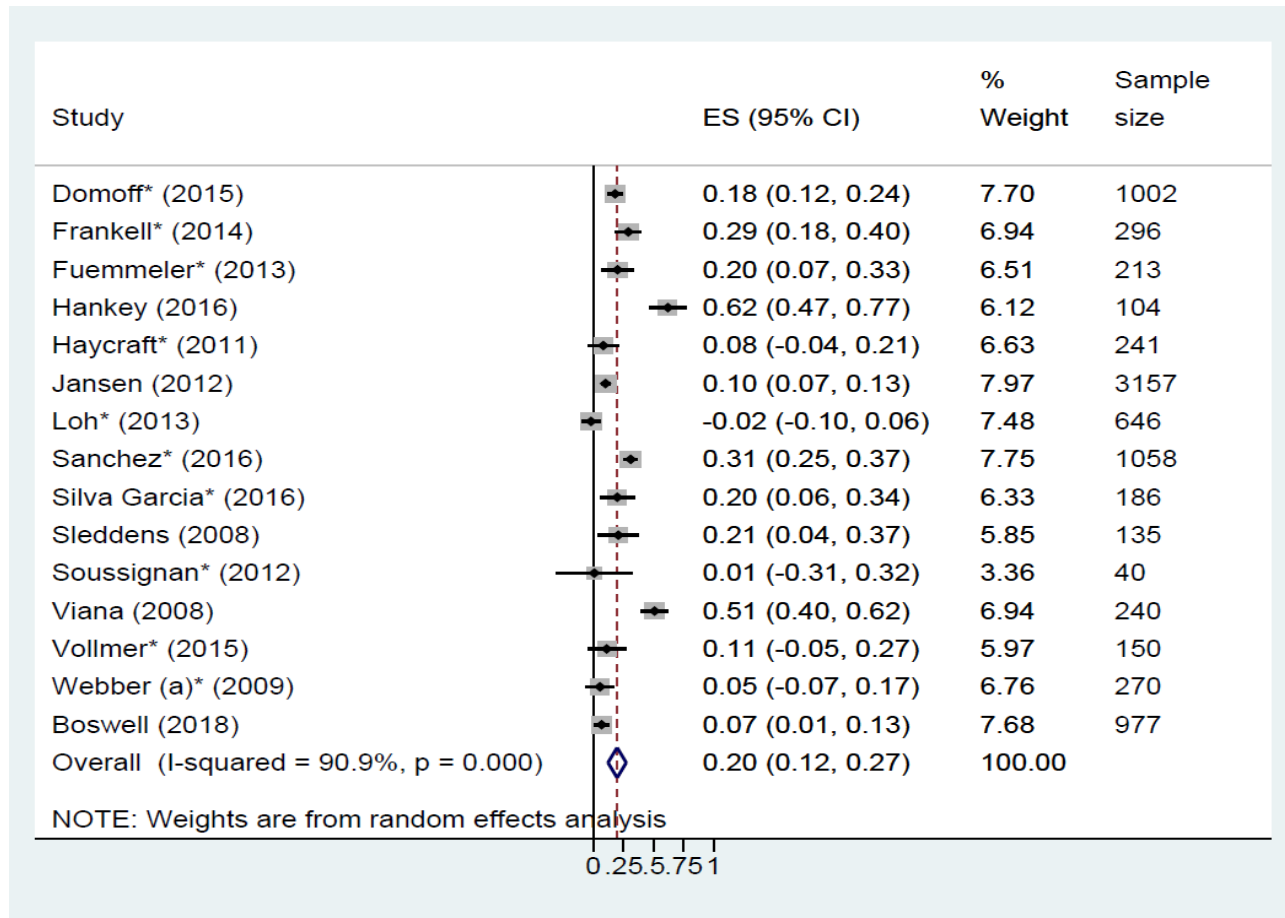


Figure 3. Pooled effect estimates for regression coefficients with BMI z-scores, by CEBQ subscales (continued). **Part C.** Emotional Overeating

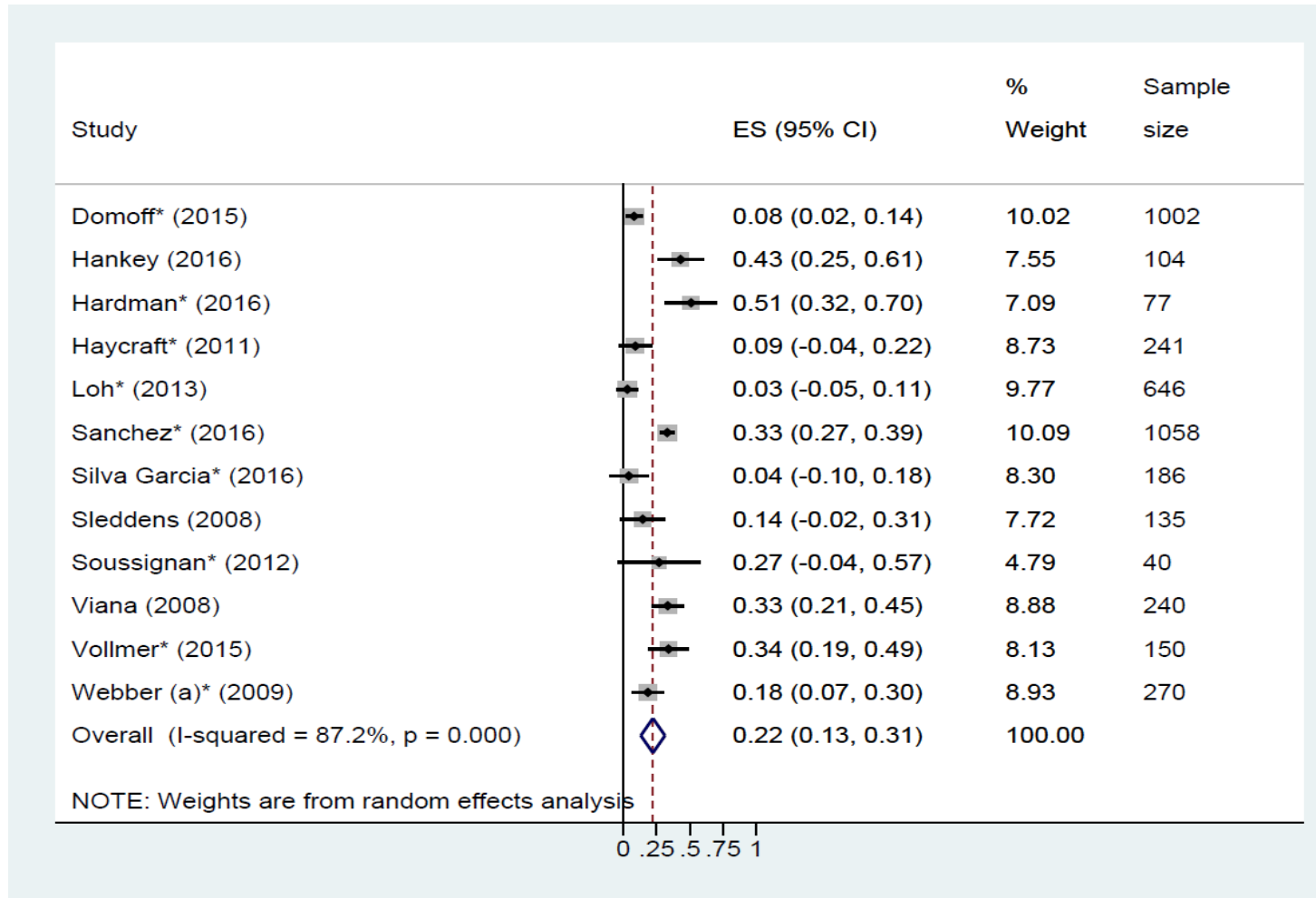


Figure 3. Pooled effect estimates for regression coefficients with BMI z-scores, by CEBQ subscales (continued). **Part D.** Desire to Drink

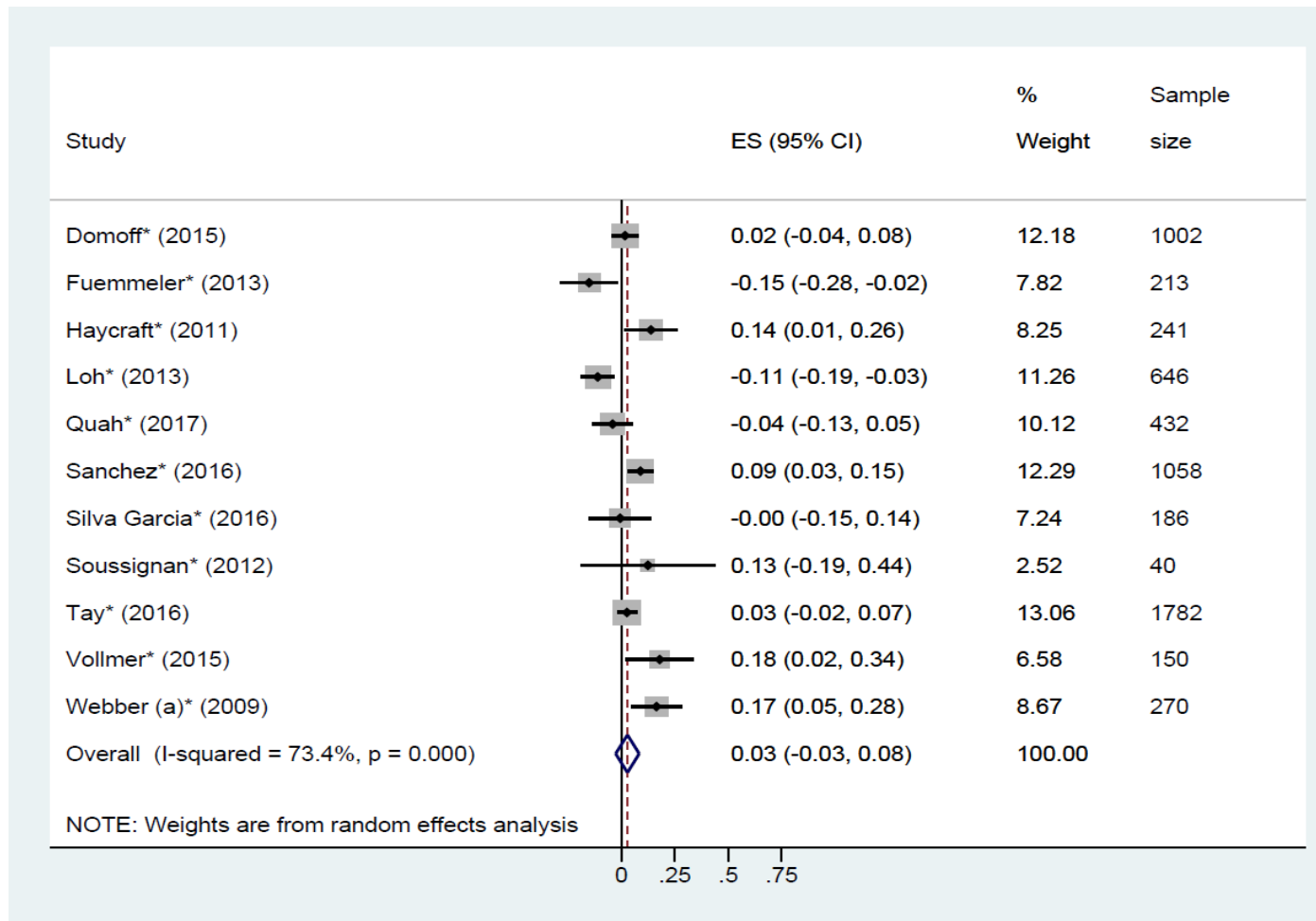


Figure 3. Pooled effect estimates for regression coefficients with BMI z-scores, by CEBQ subscales (continued). **Part E.** Satiety Responsiveness

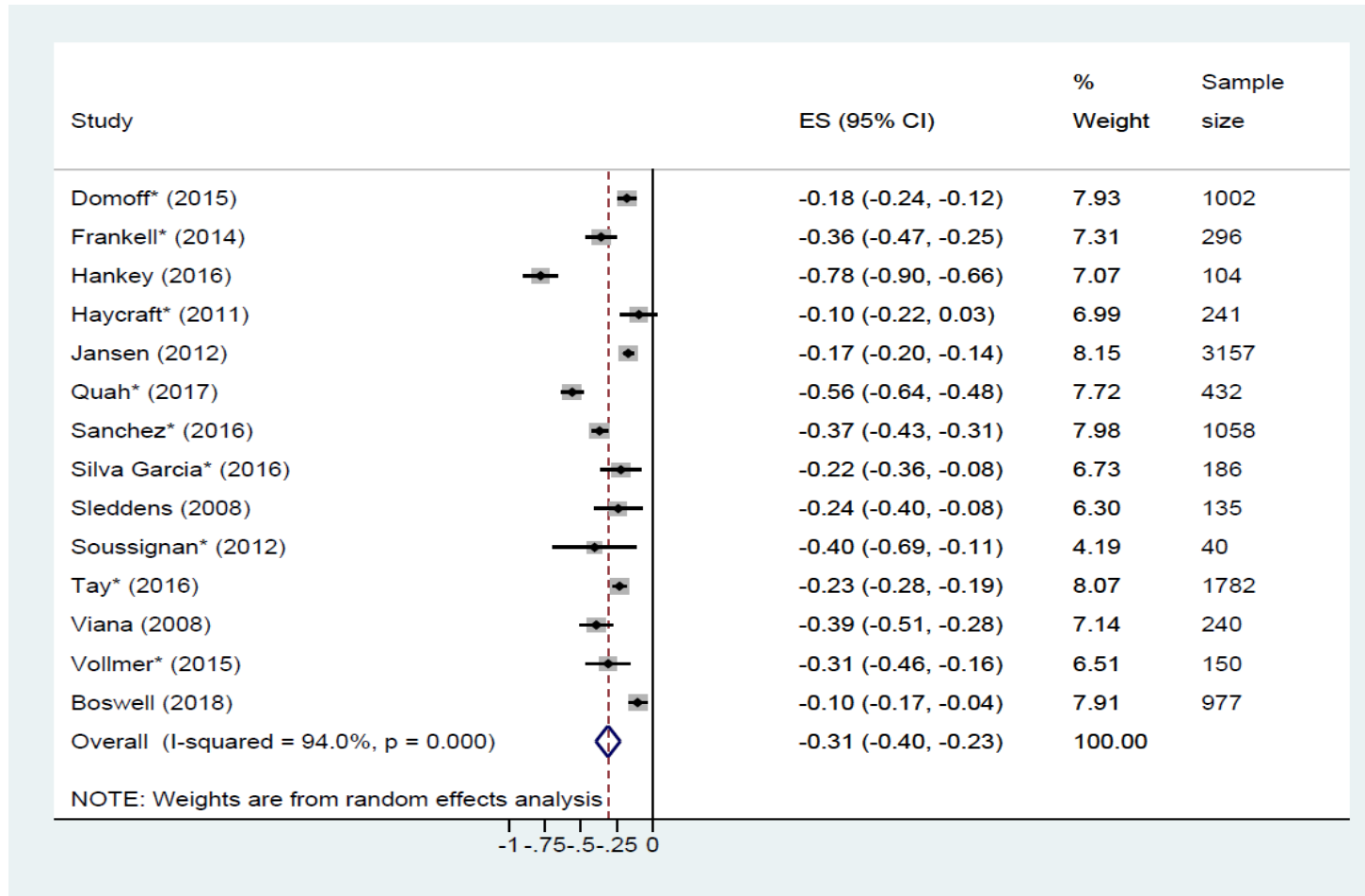


Figure 3. Pooled effect estimates for regression coefficients with BMI z-scores, by CEBQ subscales (continued). **Part F. Slowness in Eating**

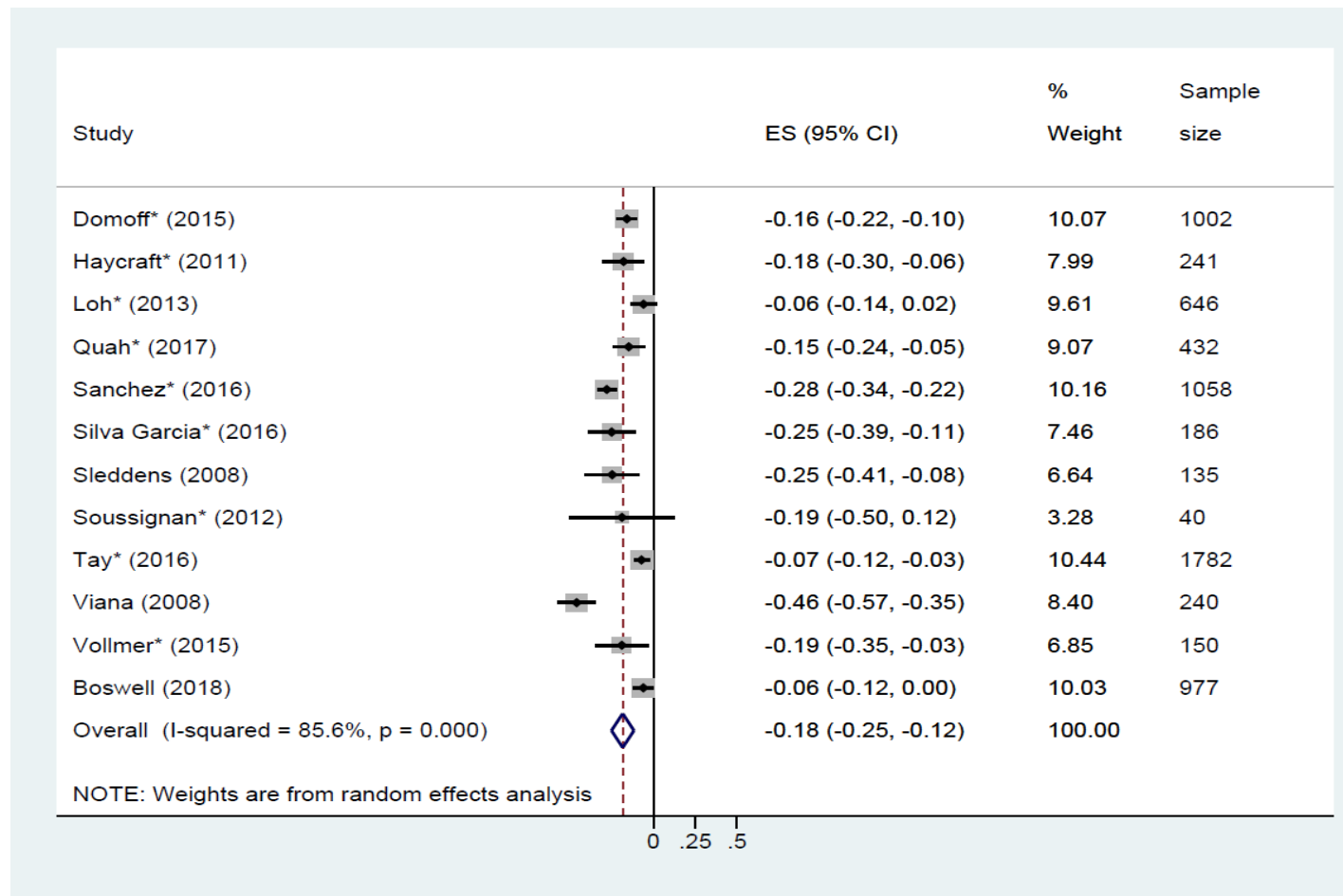


Figure 3 Pooled effect estimates for regression coefficients with BMI z-scores, by CEBQ subscales (continued). **Part G. Food Fussiness**

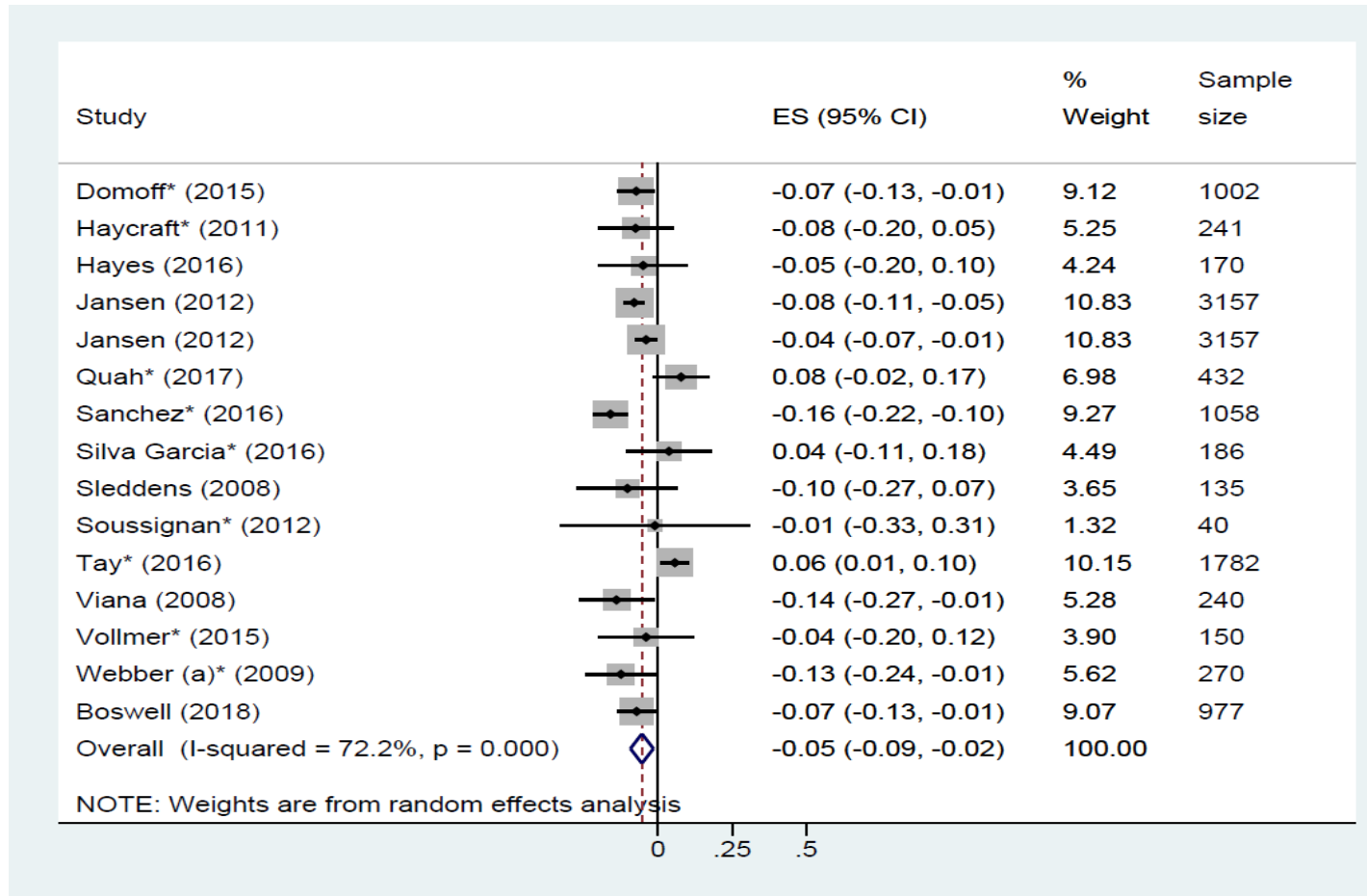


Figure 3. Pooled effect estimates for regression coefficients with BMI z-scores, by CEBQ subscales (continued). **Part H.** Emotional Undereating

