

FEATURED ARTICLE

Characterization of pre-analytical sample handling effects on a panel of Alzheimer's disease-related blood-based biomarkers: Results from the Standardization of Alzheimer's Blood Biomarkers (SABB) working group

Inge M. W. Verberk¹  | Els O. Misdorp¹ | Jannet Koelwijn¹ | Andrew J. Ball² | Kaj Blennow^{3,4} | Jeffrey L. Dage⁵ | Noelia Fandos⁶ | Oskar Hansson⁷ | Christophe Hirtz⁸ | Shorena Janelidze⁷ | Sungmin Kang⁹ | Kristopher Kirmess¹⁰ | Jana Kindermans⁸ | Ryan Lee⁹ | Matthew R. Meyer¹⁰ | Dandan Shan² | Leslie M. Shaw¹¹ | Teresa Waligorska¹¹ | Tim West¹⁰ | Henrik Zetterberg^{3,4,12,13} | Rebecca M. Edelmayer¹⁴ | Charlotte E. Teunissen¹

¹ Neurochemistry Laboratory, Department of Clinical Chemistry, Amsterdam Neuroscience, Vrije Universiteit Amsterdam/Amsterdam UMC, Amsterdam, the Netherlands

² Quanterix Corporation, Billerica, Massachusetts, USA

³ Institute of Neuroscience and Physiology, The Sahlgrenska Academy at the University of Gothenburg, Mölndal, Sweden

⁴ Clinical Neurochemistry Laboratory, Sahlgrenska University Hospital, Mölndal, Sweden

⁵ Eli Lilly and Company, Indianapolis, Indiana, USA

⁶ Araclon Biotech, Zaragoza, Spain

⁷ Clinical Memory Research Unit, Lund University, Lund, Sweden

⁸ IRMB-LBPC/PPC, INM, Univ Montpellier, CHU Montpellier, INSERM CNRS, Montpellier, France

⁹ PeopleBio, Seongnam, South Korea

¹⁰ C2N Diagnostics, St. Louis, Missouri, USA

¹¹ Department of Pathology & Laboratory Medicine, Perelman School of Medicine, University of Pennsylvania, Philadelphia, Pennsylvania, USA

¹² UK Dementia Research Institute at UCL, London, UK

¹³ Department of Neurodegenerative Disease, UCL Institute of Neurology, London, UK

¹⁴ Alzheimer's Association, Chicago, Illinois, USA

Correspondence

Inge M. W. Verberk, Neurochemistry Laboratory, Vrije Universiteit Amsterdam, Amsterdam UMC, Boelelaan 1117, 1081 HV Amsterdam, The Netherlands.
Email: i.verberk@amsterdamumc.nl

Funding information

Alzheimer's Association; Gieskes-Strijbis Fonds; Alzheimer Nederland, Grant/Award Number: NL-17004; Alzheimer Drug Discovery Foundation (ADDF), USA, Grant/Award Number: #RDAPB-201809-2016615; Swedish Alzheimer Foundation, Grant/Award Number: #AF-742881; Hjärfonden, Sweden,

Abstract

Introduction: Pre-analytical sample handling might affect the results of Alzheimer's disease blood-based biomarkers. We empirically tested variations of common blood collection and handling procedures.

Methods: We created sample sets that address the effect of blood collection tube type, and of ethylene diamine tetraacetic acid plasma delayed centrifugation, centrifugation temperature, aliquot volume, delayed storage, and freeze-thawing. We measured amyloid beta (A β)₄₂ and 40 peptides with six assays, and A β oligomerization-tendency (OA β), amyloid precursor protein (APP)₆₉₉₋₇₁₁, glial fibrillary acidic protein (GFAP), neurofilament light (NfL), total tau (t-tau), and phosphorylated tau181.

Grant/Award Number: #FO2017-0243; Swedish government and the County Councils, the ALF-agreement, Grant/Award Number: #ALFGBG-715986; European Union Joint Program for Neurodegenerative Disorders, Grant/Award Number: JPND2019-466-236; National Institute of Health (NIH), USA, Grant/Award Number: #1R01AG068398-01; Swedish Research Council, Grant/Award Number: 2016-00906; Knut and Alice Wallenberg foundation, Grant/Award Number: 2017-0383; Marianne and Marcus Wallenberg foundation, Grant/Award Number: 2015.0125; Strategic Research Area MultiPark, Lund University; Swedish Alzheimer Foundation, Grant/Award Number: AF-939932; Swedish Brain Foundation, Grant/Award Number: FO2019-0326; Parkinson foundation of Sweden, Grant/Award Number: 1280/20; Skåne University Hospital Foundation, Grant/Award Number: 2020-O000028; Regionalt Forskningsstöd, Grant/Award Number: 2020-0314; Swedish federal government under the ALF agreement, Grant/Award Number: 2018-Projekt0279; NIH: NIA ADNI, Grant/Award Number: U19 AG024904; ADRC UPenn, Grant/Award Number: P30 AG010124; MJFox Foundation for Parkinson's Research Grant Support; Roche ISS grant support; Swedish Research Council, Grant/Award Number: #2018-02532; European Research Council, Grant/Award Number: #681712; Swedish State Support for Clinical Research, Grant/Award Number: #ALFGBG-720931; Alzheimer Drug Discovery Foundation (ADDF), USA, Grant/Award Number: #201809-2016862; AD Strategic Fund and the Alzheimer's Association, Grant/Award Numbers: #ADSF-21-831376-C, #ADSF-21-831381-C, #ADSF-21-831377-C; Olav Thon Foundation; Erling-Persson Family Foundation; Stiftelsen för Gamla Tjänarinnor, Hjärnfonden, Sweden, Grant/Award Number: #FO2019-0228; European Union's Horizon 2020 research and innovation program under the Marie Skłodowska-Curie grant agreement, Grant/Award Number: 860197; UK Dementia Research Institute at UCL; Dutch Research Council (ZonMW); Weston Brain Institute

Results: Collection tube type resulted in different values of all assessed markers. Delayed plasma centrifugation and storage affected A β and t-tau; t-tau was additionally affected by centrifugation temperature. The other markers were resistant to handling variations.

Discussion: We constructed a standardized operating procedure for plasma handling, to facilitate introduction of blood-based biomarkers into the research and clinical settings.

KEYWORDS

Alzheimer's disease, amyloid beta, plasma biomarkers, pre-analytics, stability, tau

1 | BACKGROUND

Blood-based biomarkers for Alzheimer's disease (AD) have the potential to be implemented as non-invasive screening tools. Promising markers that reflect AD neuropathophysiological processes are amyloid beta (A β),¹⁻⁹ (phosphorylated) tau (p-tau),¹⁰⁻¹³ glial fibrillary acidic protein (GFAP),^{6,8,14-16} and neurofilament light (NFL).^{8,15-17} Particularly GFAP and NFL are also implicated in other neurodegenerative diseases, such as non-AD dementias, multiple sclerosis, or traumatic brain injury.^{14,18,19} Standardization of measurement across clinical trials and care settings will facilitate widespread adoption and implementation of blood-based biomarkers.

It took decades for cerebrospinal fluid (CSF) A β 42 and p-tau to be widely accepted as fluid biomarkers for AD,^{20,21} among other reasons due to large variability in levels between and within laboratories.^{22,23} Variation has been partially mitigated by fully automated analytical instruments,^{24,25} and development of Certified Reference Materials to which commercial assays were recalibrated.²⁶ Different procedures of sample handling in the pre-analytical phase, from body fluid collection until analysis, also caused variation.²⁷ This was standardized by development of standardized operating procedure (SOP)s.²⁸⁻³¹ It is conceivable that pre-analytical variations might also impact levels of the novel AD blood-based biomarkers.

A plasma sample handling SOP has been proposed,³² but this was not based on empirical evidence. Initial pre-analytical experiments showed that use of different anticoagulants resulted in different A β ₄₂, A β ₄₀, GFAP, NfL, total tau (t-tau), and p-tau181 levels,^{33–35} and that A β levels might be unstable in ethylene diamine tetraacetic acid (EDTA) blood pending centrifugation and after,^{33,35–37} while t-tau and NfL appeared to be more stable but with some conflicting results.^{33,37–40} A comprehensive study of a broad range of pre-analytical factors on the wide portfolio of novel AD blood-based biomarkers is lacking. We aimed to establish an analyte-independent *and* technology-independent blood sample handling SOP based on empirical evidence.

2 | METHODS

This study was a joint effort of the Standardization of Alzheimer's Blood Biomarkers (SABB) workgroup of the Global Biomarker Standardization Consortium (GBSC) of the Alzheimer's Association, which was launched in 2018 to bring together expertise from academia, government, and industry. In a stepwise approach, we (1) identified the breadth of variation in sample handling protocols applied by cohort studies and diagnostic and pharmaceutical companies, (2) investigated the effect of the most common and most relevant pre-analytical sample handling differences on the different blood-based biomarkers in systematic experiments, and (3) generated a unified SOP.

2.1 | Identification of pre-analytical sample handling variation between studies using inventories

We invited 42 GBSC members representing 30 organizations to fill out a survey detailing all steps of their pre-analytical sample handling protocols (19 variables; survey template in [File S1](#) in supporting information). After reviewing, a next survey was sent to 48 GBSC members representing 32 organizations (template in [File S2](#) in supporting information), inviting them to give priority rankings (scale 1 [= highest] to 5 [= lowest]) to short-list the most relevant pre-analytical factors.

2.2 | Generation of pre-analytical sample sets

At Amsterdam University Medical Center (UMC), sample sets were prepared to mimic the extremes of the reported variations of the short-listed pre-analytical factors. Fresh blood was obtained from adults who presented at the Clinical Chemistry Department for a diagnostic blood draw for any disease. As reference condition, whole blood was centrifuged for 10 min at 1800 × g at room temperature (RT), after standing 30 minutes at RT. Subsequently, separated plasma (or serum) was aliquoted in 250 μ L portions in 0.5-mL polypropylene tubes, and stored at –80°C. For the experimental conditions, these handling steps were systematically varied (detailed experimental protocols in [File S3](#) in sup-

RESEARCH IN CONTEXT

- 1. Systematic review:** Blood-based biomarkers for Alzheimer's disease (AD) have the potential to be implemented into diagnostic and clinical trial settings. We searched PubMed for articles related to pre-analytical effects on blood-based biomarker levels. A non-evidence-based standardized operating procedure (SOP) for blood sample handling was proposed in 2015, and a few recent studies showed effects of some pre-analytical variations on amyloid, tau, and neurofilament light levels. A comprehensive study on a broad range of pre-analytical factors on the wide portfolio of novel AD blood-based biomarkers is lacking.
- 2. Interpretation:** In this collaborative project of the Standardization of Alzheimer's Blood Biomarkers (SABB) working group of the Global Biomarker Standardization Consortium (GBSC), we proposed an evidence-based, easy-to-follow SOP that will facilitate the optimal measurement of most of the now available blood-based biomarkers for AD.
- 3. Future directions:** This SOP should be considered for implementation in ongoing and future clinical studies, to standardize blood-based biomarker measurement.

porting information). Ninety-two volunteers participated, contributing to n = 10 to 12 inclusions per protocol, with ≤ 15 aliquots per condition.

The study was in accordance with the Declaration of Helsinki, and approved by the medical ethical committee of the Vrije Universiteit (VU) UMC (approval number: 2019.257–NL69123.029.19). All volunteers gave written informed consent to use their blood for research purposes. No demographic or clinical information was collected.

2.3 | Sample measurements

Samples were shipped to eight laboratories for quantitative analysis using different platforms (detailed below). All measurements were performed according to lab protocols and/or manufacturers' instructions. Sample handling from thawing until measurement is described in [File S4](#) in supporting information.

A β ₄₂ and A β ₄₀ were measured at C₂N Diagnostics' Clinical Laboratory Improvement Amendments (CLIA)-certified lab (Precivity-AD) using immunoprecipitation liquid chromatography mass spectrometry (MS),⁴¹ at the Shaw lab of University of Pennsylvania using Euroimmun enzyme-linked immunosorbent assays (ELISAs) and at Araclon Biotech using their ELISAs.^{42,43} A β ₄₂, A β ₄₀, and amyloid precursor protein (APP)_{669–711} were measured at the Hirtz lab with immunoprecipitation matrix-assisted laser desorption/ionization time-of-flight (MALDI-TOF)-MS, using a protocol slightly modified from Nakamura

TABLE 1 Pre-analytical variation in sample handling protocols between studies

	Pre-analytical sample handling step	Summary of observed variation	Mean priority rating (range: 1-5; 1 = highest; 5 = lowest)	Included in empirical protocols?
Sampling factors	Time of day for collection	50% reported collection in the morning; 50% reported collection throughout the day.	2	No*
	Fasting status	57% reported non-fasted collection; 43% reported fasted collection.	2	No*
	Needle size and location of draw	Details reported by only a few. Only venous blood draws reported; needle size varied between 21- to 24-gauge needles.	4	No
	Vacutainer needle vs. butterfly needle vs. syringe	Details reported by only a few. Mostly, vacutainer needles were used. Sometimes butterfly needles for difficult blood draws. One study specifically reported syringe should be avoided due to risk of hemolysis.	3	No
	Plastic tubing or other tools used during the blood draw	None reported the use of tubings or other tools.	3	No
	EDTA type and concentration	Both 10 mL 18 mg K ₂ EDTA tubes and 6 mL 10.8 mg K ₂ EDTA tubes were used. One study reported Prostaglandin E1 addition. One study specifically reported spray-coated K ₂ EDTA is preferred, to not artificially dilute the plasma (i.e., with liquid EDTA).	2	No
	Tube types and additives, e.g., EDTA, citrate, heparin	Most studies collect K ₂ EDTA plasma. One study reported use of the additive-free S-Monovette Sarstedt tube. Some studies additionally collect serum, sodium-citrate plasma, or lithium-heparin plasma.	2	Yes
	Tube collection order	According to best practice: (1) sodium-citrate, (2) serum, (3) lithium-heparin, (4) EDTA.	3	No
	Tube filling volume	All reported complete tube filling.	3	No
Preparation factors	Tube inversion or manipulation before centrifugation	No variation. All studies invert the tube a few times immediately after collection; up to 10 times.	3	No
	Time from collection to centrifugation	A lot of variation observed: 30%: within 30 min; 30%: within 1 h; 20%: within 2 h; 10%: within 5 h; 10%: within 30 h.	2	Yes
	Temperature during period from collection to centrifugation	50% reported room temperature; 50% reported in the refrigerator or on wet ice	2	Yes
	Centrifugation parameters (specify speed, time, temp)	Most report centrifuging for 5–15 min at 1500-3000 x g. One study reports 4000 x g for 30 min. One study reports a stepwise approach to additionally collect platelets and buffy coat. 50% centrifuge at room temperature; 50% centrifuge at 4° C.	2	Yes: Centrifugation temperature. No: Centrifugation time and speed.
	Time from centrifugation to freezing	Details only reported by a few. 33% aliquot and store immediately; 33% within 30 min; 17% within 1.5 h; 17% within 4 h.	2	Yes
	Temperature during period from centrifugation to freezer	Details only reported by a few; 57% keep tubes at room temperature, 29% on ice/in the refrigerator, and 14% on dry ice.	2	Yes

(Continues)

TABLE 1 (Continued)

	Pre-analytical sample handling step	Summary of observed variation	Mean priority rating (range: 1-5; 1 = highest; 5 = lowest)	Included in empirical protocols?
Storage factors	Temperature of freezing	80% reported storage at -80°C ; 6% reported liquid nitrogen freezing, 6% on dry ice, 6% at -20°C	2	Yes: intermittent storage at -20°C No: liquid nitrogen storage
	Freeze-thaw cycles	Most reported to use samples with no additional freeze-thaw cycles. One study reported that less than three cycles is possible.	2	Yes
	Aliquot size	Most report storage in 250-500 μL aliquots: 54%; 27%: $> 500 < 1000 \mu\text{L}$; 18%: $> 1000 < 1500 \mu\text{L}$. Storage tube sizes was not asked, thus no details on tube filling.	2	Yes
	Length of storage at low temperature	Length of storage depends on starting date of the cohort. Not formally investigated. One study reported intermediate storage at -20°C when immediate storage at -80°C is not possible.	2	Yes: intermediate storage in the refrigerator or at -20°C . No: long-term storage at -80°C .*

Notes: The reported percentages were calculated from valid answers only (i.e., if detail was not specified or answered with N/A it was not included in the counts). We were not able to investigate the variables indicated with an asterisk (*) within the current empirical protocols, although we do recognize these are relevant pre-analytical variables with high priority ranking.

Abbreviation: EDTA, ethylene diamine tetraacetic acid.

et al.¹ $A\beta_{42}$, $A\beta_{40}$, NFL, and GFAP were measured at the Quanterix lab, with the pre-commercial Simoa Neurology 4-Plex E kit, and $A\beta_{42}$, $A\beta_{40}$, and t-tau were measured at the Clinical Neurochemistry Laboratory of Gothenburg University with the Simoa Human Neurology 3-Plex A kit (Quanterix). $A\beta$ oligomerization tendency ($OA\beta$) was measured at PeopleBio (Republic of Korea), using multimer detection system- $OA\beta$ test.⁷ Last, p-tau181 was measured at Amsterdam UMC in duplicate with 4-fold automated sample dilution on the Simoa HDx analyzer using a Simoa prototype two-step assay with AT270 (Thermo Fisher Scientific) as the capture and LRL (Eli Lilly and Company) as the detector antibody, which is according to the Meso Scale Discovery (MSD) set-up as published previously.⁴⁴ We analytically validated this novel assay prior to use and accepted it to be fit for purpose, according to validation consensus guidelines.⁴⁵

2.4 | Data analysis

We applied Spearman correlation analysis to compare the raw blood biomarker values obtained in the reference conditions. Biomarker values obtained under experimental conditions were normalized against their reference condition (%recovery). We calculated group median %recovery per experimental condition. When the median changed $> 10\%$, we considered this a relevant (clinically significant)

change. This arbitrary value was chosen to balance intra-assay variability inherent to fluid biomarker measurements (generally $< 10\%$), with the observation that plasma $A\beta_{42}/40$ is decreased by only $\approx 20\%$ in patients with AD compared to controls.⁹ Data were visualized using R version 1.1.463.

3 | RESULTS

3.1 | Pre-analytical variations across studies identified with inventories

Fifteen investigators representing nine cohorts, five companies, and one experimental study filled out our pre-analytical sample handling survey. Results are summarized in Table 1. No relevant variation was reported in sampling factors needle size, location of blood draw, plastic tubing or other tools used, tube collection order, and tube filling volume. No variation was reported in preparation factor tube inversion or manipulation before centrifugation, and only little variation in storage factor freeze-thaw cycles. Much variation was reported in standing time from blood draw until centrifugation (longest: 30 hours), and from centrifugation to freezing (longest: 4 hours), during which 50% of the studies hold the tubes at RT and 50% hold the tubes cold.

The pre-analytical variables were ranked for priority for testing (average ratings in Table 1). In general, variables with little variation were ranked lowest, and variables with much variation were ranked highest. Exceptions were collection tube type and freeze-thawing.

3.2 | Effect of pre-analytical variation on the A β 42 and A β 40 peptides

A β 42 and A β 40 were measured with two MS assays, two Simoa assays, and two ELISAs. The absolute A β 42, A β 40, and A β 42/40 values for each of the assays as measured in the non-mistreated reference conditions of the experimental sample sets ($n = 80$ for each assay) are presented in File S4 in supporting information. All values were measured well above the assay's lower limits of quantifications. In these reference samples, we observed moderate between-assay correlations of most of the A β 42 values (range Spearman ρ : 0.3–0.6, all: $P < .04$), only the Araclon ELISA results did not correlate with the MALDI MS, the Euroimmun ELISA, and the N4PE Simoa results (File S5 in supporting information). We also observed moderate between-assay correlations of most of the A β 40 values (range Spearman ρ : 0.3–0.6, all: $P < .02$), only between the MALDI MS assay and the N4PE Simoa assay there was no correlation (File S5).

A detailed summary of the median recovery with interquartile range (IQR) per pre-analytical sample handling variation, for each of the markers with each of the assays, is presented in File S6 in supporting information. For most assays, A β 42 and A β 40 values were somewhat lower in sodium–citrate samples (range of median recovery A β 42: 85–100%; A β 40: 82–99%) and somewhat higher in lithium–heparin samples (A β 42: 104–131%; A β 40: 97–128%; Figures 1 and 2) compared to plasma EDTA samples. A β 42 and A β 40 values in serum samples were either lower, the same, or higher depending on the assay used (A β 42: 36–108%; A β 40: 69–115%; Figures 1 and 2). Sample type-mediated higher or lower A β values seemed largely independent of the technology and/or assay used. An exception might be lithium–heparin, as qualitatively, recoveries of both MS assays as well as both Simoa assays were similar for A β 42, and of both MS assays and both ELISAs for A β 40.

Independent of the assay used, if centrifugation was delayed for 24 hours, plasma A β 42 and A β 40 values declined when tubes were held at RT (range A β 42: 59–81%; range A β 40: 62–93%), whereas this decline was not yet visible at earlier time points (1 and 3 hours) nor when tubes were held in the refrigerator up to 24 hours (Figures 1 and 2; except outliers in MALDI MS A β 40 and N3PA A β 40 data: see File S6). We observed this same assay-independent effect upon delayed storage of separated plasma (i.e., post-centrifugation and aliquoting; Figures 1 and 2). Plasma A β 42 and A β 40 values were decreased in samples that were held at RT for 24 hours prior to -80°C storage (A β 42: 70–85%; A β 40: 68–90%), whereas this decrease was not yet visible at time point 4 hours nor when the samples were held in the refrigerator for up to 24 hours (except outliers in MALDI MS A β 40 data: see File S6). Two-week intermittent storage in the refrigerator prior to storage at -80°C

also resulted in decreased A β 42 (41–79%) and A β 40 values (27–80%), independent of the assay used, while two-week intermittent storage at -20°C did not (Figures 1 and 2). Centrifugation temperature (RT or 4°C), aliquot volume (250, 500, or 1000 μL in 1.5 mL-tubes) and sample freeze–thawing (up to four cycles) did not impact A β 42 and A β 40 values (Figures 1 and 2).

The A β 42/40 ratio mitigated the pre-analytical variation observed on A β 42 and A β 40 values for only some of the assays and conditions (Files S6 and S7 in supporting information). The observed pre-analytical effect at 24-hour delayed centrifugation (RT condition) could be mitigated by the A β 42/40 ratio for only the Euroimmun ELISA assay, and not the other five assays. The observed effect of 24-hour delayed storage (RT condition) was mitigated by the A β 42/40 ratio for four of six assays (C₂N MS, Simoa N3PA, Euroimmun ELISA, Araclon ELISA), and the observed effect of 2-week storage in the refrigerator was mitigated by this ratio for three of six assays (C₂N MS, Simoa N3PA, Araclon ELISA).

3.3 | Effect of pre-analytical variation on other blood-based biomarkers

We also measured levels of two other amyloid forms OA β and APP₆₉₉₋₇₁₁ and the non-amyloid biomarkers GFAP, NfL, t-tau, and p-tau181 (absolute values in non-mistreated reference samples in File S4; median (IQR) recovery per pre-analytical condition per analyte in File S6).

Sample type influenced OA β , GFAP, NfL, t-tau, and p-tau181, but not APP₆₉₉₋₇₁₁ (Figure 3), in a similar way as for the A β 42 and A β 40 analytes. Compared to EDTA plasma samples, values were lower in sodium–citrate samples (range of median recovery: 74–103%), higher in lithium–heparin samples (except OA β : recovery 52%; other: 103–206%) and either comparable (APP₆₉₉₋₇₁₁, GFAP, NfL) or lower (OA β , t-tau, p-tau181) in serum samples.

OA β , APP₆₉₉₋₇₁₁, GFAP, NfL, and p-tau181 were stable over 24 hours delayed centrifugation conditions both when tubes were held at RT or in the refrigerator pending centrifugation (Figure 3; except one outlier for OA β : see File S6). t-tau, however, was not stable in whole blood, with lower values when tubes were held at RT for 3 hours (83%) and for 24 hours (49%), and higher values when tubes were held in the refrigerator for 3 hours (115%) and for 24 hours (129%) pending centrifugation. Also, centrifugation temperature affected t-tau levels (4°C compared to RT condition: recovery 81%), while it did not affect the other markers. Aliquot tube filling did not affect any of the markers. Short-term delayed storage (i.e., max 24 hours) did not affect any of the markers (except outliers in p-tau181: see File S6), but APP₆₉₉₋₇₁₁ and t-tau levels were lower after 2-week storage in the refrigerator (APP₆₉₉₋₇₁₁: 72%; t-tau: 85%). The marker levels remained stable upon 2-week -20°C storage. Last, only GFAP levels were increased in the samples that underwent four additional freeze–thaw cycles (113%), while no change was observed at the second cycle. Levels of the other markers were not changed after up to four times repeated freeze–thawing.

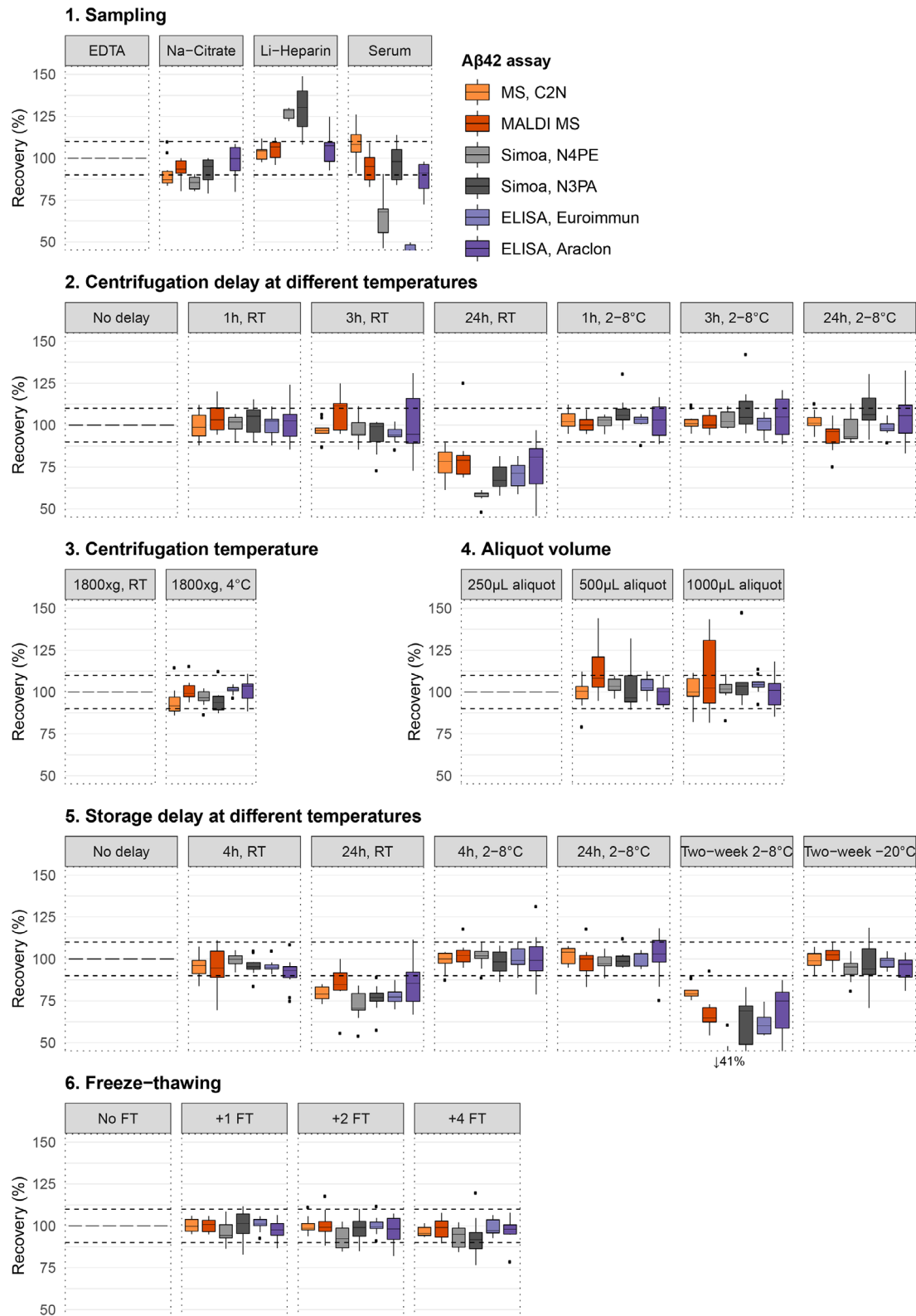


FIGURE 1 Effect of pre-analytical sample handling variations on A β 42 levels, measured by different technologies. Values measured in the experimental conditions were normalized against the values measured in the reference conditions, which is EDTA plasma, centrifuged at 1800 \times g at room temperature, after a standing time of 30 minutes at room temperature, immediately followed by aliquoting and -80°C storage. In 1. Sampling, levels in Na-citrate and Li-heparin were undetectable with the Euroimmun ELISA assay. In 5. Storage, 2-week $2-8^{\circ}\text{C}$ condition, the recovery was 41% for Simoa N4PE, which is below the y-axis limit. Horizontal, dashed reference lines were set at 90% and 110%, to visualize a $> 10\%$ change of the median under an experimental condition compared to the reference condition. A β , amyloid beta; EDTA, ethylene diamine tetraacetic acid; ELISA, enzyme-linked immunosorbent assay; FT, freeze-thaw cycle; Li-heparin, lithium-heparin; MS, mass spectrometry; Na-citrate, sodium-citrate; RT, room temperature

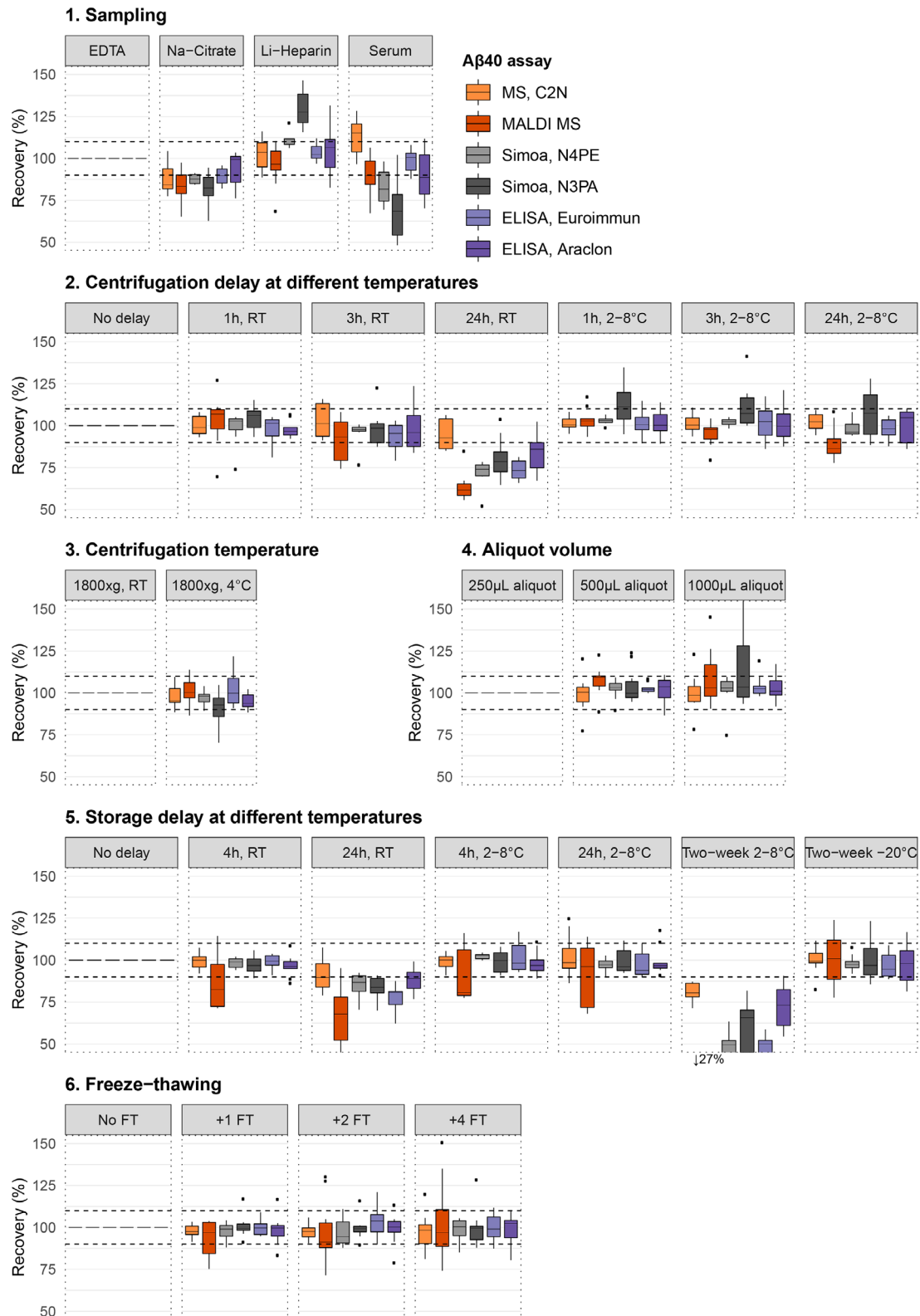


FIGURE 2 Effect of pre-analytical sample handling variations on A β 40 values, measured by different technologies. Values measured in the experimental conditions were normalized against the values measured in the reference conditions, which is EDTA plasma, centrifuged at 1800 \times g at room temperature, after a standing time of 30 minutes at room temperature, immediately followed by aliquoting and -80°C storage. In 5. Storage, 2-week 2-8 $^{\circ}\text{C}$ condition, the recovery was 27% for the MALDI MS assay, which is below the y-axis limit. Horizontal, dashed reference lines were set at 90% and 110%, to visualize a > 10% change of the median under an experimental condition compared to the reference condition. A β , amyloid beta; EDTA, ethylene diamine tetraacetic acid; ELISA, enzyme-linked immunosorbent assay; FT, freeze-thaw cycle; Li-heparin, lithium-heparin; MALDI, matrix-assisted laser desorption/ionization; MS, mass spectrometry; Na-citrate, sodium-citrate; RT, room temperature

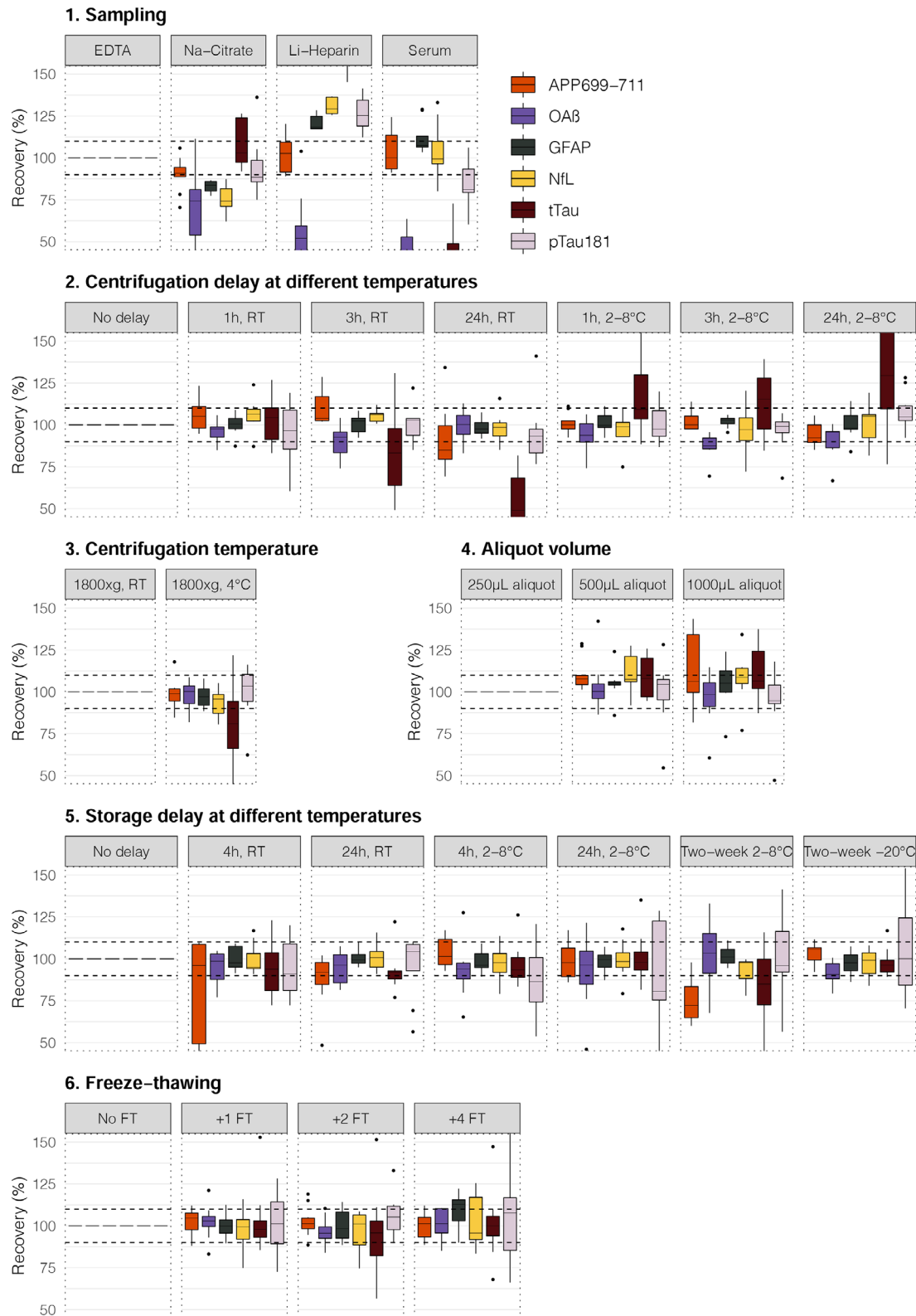


FIGURE 3 Effect of pre-analytical sample handling variations on biomarkers APP₆₉₉₋₇₁₁, OAB, GFAP, NfL, t-tau, and p-tau181. Values measured in the experimental conditions were normalized against the values measured in the reference conditions, which is EDTA plasma, centrifuged at 1800 × g at room temperature, after a standing time of 30 minutes at room temperature, immediately followed by aliquoting and –80°C storage. Horizontal, dashed reference lines were set at 90% and 110%, to visualize a > 10% change of the median under an experimental condition compared to the reference condition. APP, amyloid precursor protein; FT, freeze-thaw cycle; GFAP, glial fibrillary acidic protein; Li-heparin, lithium-heparin; Na-citrate, sodium-citrate; NfL, neurofilament light; OAB, amyloid beta oligomerization tendency; p-tau181, tau phosphorylated at threonine 18; RT, room temperature; t-tau, total tau

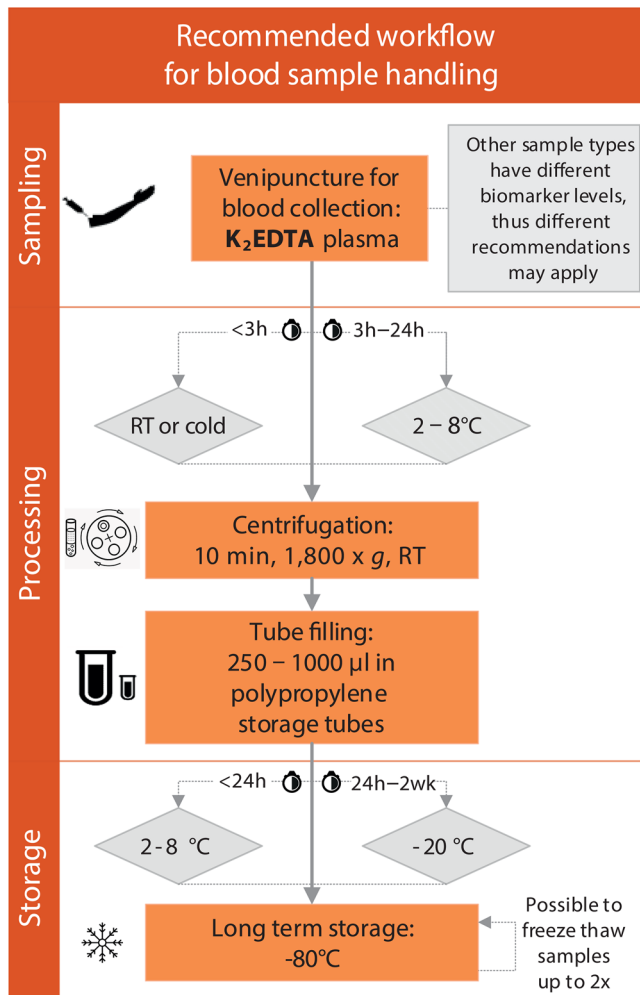


FIGURE 4 Recommended plasma handling standardized operating procedure (SOP). The SOP was constructed according to results obtained in systematic pre-analytical experiments. Deviating from this SOP might result in less reliable A β 42 and A β 40 measurements. For reliable total tau measurement, a maximum processing time of 1 hour might be necessary. Longer delays than 24 hours for centrifugation or 2 weeks for storage might be possible, but this was not investigated in this study. A β , amyloid beta; RT, room temperature; wk, week

4 | DISCUSSION

We showed that between studies, largest pre-analytical variation is in time to centrifugation and time from centrifugation to storage, during which tubes are kept at RT or cold. Our experiments showed that time and temperature to centrifugation and storage are critical pre-analytical variables, as was blood collection tube type. Levels for all investigated markers were unaffected by differences in aliquot tube filling, short-term -20°C storage, and up to three cycles of sample freeze-thawing. Based on our empirical observations, we recommend an SOP for the handling of EDTA plasma from collection to measurement (Figure 4). Understanding pre-analytical sample handling effects on blood-based biomarkers and implementing SOPs to limit variation is key to reach consistency across studies, technologies, and labora-

tories. This will contribute to validating and interpreting blood-based biomarker results across studies, and facilitates implementation of blood-based biomarkers into diagnostic and trial settings.

A β values were decreased in whole blood and in separated plasma at 24 hours when held at RT but not when stored in the refrigerator, and after 2 weeks in the refrigerator but not at -20°C . Therefore, we recommend in our SOP to store whole blood or separated plasma in the refrigerator when centrifugation and aliquot freezing is not possible within a short time window. Biomarkers OA β , APP₆₉₉₋₇₁₁, GFAP, NfL, and p-tau181 were stable under delayed centrifugation and storage conditions. It is noted that t-tau was not resistant to delayed centrifugation, with lower t-tau levels observed when whole blood was held at RT for ≥ 3 hours, and higher levels when whole blood was held in the refrigerator for ≥ 3 hours. t-tau findings in our study were the exception among the biomarkers investigated, and are not in line with earlier publications using other t-tau assays, that showed that t-tau was stable for up to 6³³ or 8 hours³⁷ prior to centrifugation. Additionally, clinical studies on plasma t-tau suggest that when measured in its current format, this is not an accurate biomarker for AD.¹³ Therefore, we decided not to adapt the SOP to the t-tau findings. Instead, we recommend t-tau biomarker studies to be conducted in biobanks with minimal centrifugation delays. Further, only t-tau levels were influenced by centrifugation temperature, with lower levels in samples that were centrifuged at 4°C . We recommend adhering to RT centrifugation.

At this time, few studies have been published on pre-analytical stability of blood-based A β 42, A β 40, t-tau, GFAP, NfL, and p-tau181.^{33,34,36,37,40,46,47} None studied the variables included in our study comprehensively and only one analytical platform was used within each study. Results of previous studies corroborated our observed resistance of A β 42 and A β 40 to sample freeze-thawing (up to 3x)^{33,34,40,46} and to delayed centrifugation or storage when kept cold.³⁶ Results on the effect of delayed centrifugation and storage at RT on A β 42 and A β 40 levels were conflicting.^{33,36,37} With different assays than used in our study, A β 42 and A β 40 levels in whole blood were found stable at RT over 8 hours,³⁷ started declining from 1 hour onward,³³ or from 6 hours (A β 42) and 48 hours (A β 40) onward.³⁶ In separated plasma, levels were shown to decline at RT from 6 hours (A β 42) and 8 hours (A β 40) onward.³⁶ We did not include intermediate standing times between 3 or 4 and 24 hours, but in our hands, A β 42 and A β 40 values started declining somewhere within this time window. Using the A β 42/40 ratio instead of the single peptides was not a solution to mitigate all pre-analytical effects in the current study. The observed declines were somewhat more pronounced for A β 42 compared to A β 40, suggesting that plasma A β 42 is more unstable. Because we did not see an effect of tube filling on A β levels, adsorption of A β to plastics likely does not explain the observed decreases in A β levels, in contrast to earlier observations for the CSF for which adsorption to plastics was an important pre-analytical variable.⁴⁸ Ex vivo aggregation or proteolytic cleavage could be mechanisms at play.

Prior NfL studies showed, in agreement with our findings, that levels are stable in the refrigerator for up to 24 hours prior to processing and storage,³⁸ and for 48 hours prior to processing at RT.⁴⁷ It was also shown that NfL levels increase when samples are stored either at RT

or in the refrigerator for 5 days,³⁹ but we did not see such an increase after 2 weeks in the refrigerator. There is some conflicting literature on the effect of freeze–thawing on NfL levels, with some studies reporting no effect of sample freeze–thawing,^{34,38} while another study did report an effect.⁴⁰ Furthermore, it was reported that plasma p-tau181 levels were decreased at freeze–thaw cycle 4, while GFAP remained stable up to freeze–thaw cycle 4.³⁴ Thus, if possible, using fresh aliquots might be preferred, although our findings show it is possible to freeze–thaw several times after initial freezing. So far, none studied the effects of delayed storage and processing on p-tau and GFAP.

A strength of the current study is that we had a standardized, systematic study design to investigate variations in the pre-analytical phase on a broad panel of blood-based biomarkers. With all biomarkers measured in the same samples, we could make well-founded conclusions on the relevance of pre-analytical variables and establish a biomarker-independent SOP, even though there was some measurement variation for some assays. Further, we included six different assays with different technologies for A β , resulting in a technology-independent SOP. Interestingly, the observed pre-analytical effects on A β 42 and A β 40 values were largely technology-independent, although Spearman correlations between the assay results were only moderate. Possible causes for these moderate correlations are that different assays target different epitopes of the A β peptides and there are differences in assay sensitivity and selectivity,⁴⁹ and inherent to the assay used, there are differences in how samples are handled from thawing until measurements.

Our study has some limitations as well. We empirically tested effects of pre-analytical variations on plasma EDTA samples only, because this is the matrix most commonly stored in dementia biobanks and used for AD blood-based biomarker testing. Different collection tubes resulted in different absolute biomarker values, which was also confirmed in an independent study,³⁴ but we do not know yet if pre-analytical effects are similar for different blood sample types, which is the subject of follow-up studies. Further, we did not investigate differences between K₂EDTA and K₃EDTA, which are both used commonly in dementia biobanks. Also, it might be that pre-analytical variations are dependent on the presence of a disease (e.g., healthy controls vs. patients with AD) or on the biomarker starting concentration, which we did not investigate here. Also, we must note that RT is not a standardized term. In this study, RT was by estimation in the range of 17–22°C, and we did not test higher ambient RTs. Further, we only investigated single pre-analytical parameters per experiment, while there might be interactions between parameters, which should be addressed in follow-up studies. Also, it is noted that pre-analytics might affect both measurement precision and analyte stability, which both affect the measured biomarker concentrations, and which affects clinical applicability of the biomarkers. Last, it is important to note that only one p-tau181 assay was included in this study, which is a prototype Simoa assay applying the antibodies used in the Eli Lilly MSD set-up. This assay is not yet published elsewhere. How the findings obtained with this assay relate to other assays, such as the commercially available p-tau181 Quanterix assay, remains to be established.

We recommend follow-up studies to confirm, and expand, our current findings, for example, including the multiple plasma p-tau assays that are currently becoming available. For a comparative p-tau pre-analytics study, we recommend the inclusion of AD patients, to include samples with higher starting concentrations. Especially for p-tau217, many control samples were reported to be measured below the detection limit in previous research,⁵⁰ which impacts measurement precision, therewith hinders interpretation of possible variation in levels due to pre-analytical conditions. Also, we recommend to extend our findings. Time of day of collection and fasting status, as well as long-term stability at –80°C, were not investigated in the current study but were deemed relevant by expert opinion. It is noted that the SOP we designed might be tailored most to observational studies that store samples to measure multiple biomarkers now and in the future. If one has a specific marker defined in the protocol or a specific context of use in mind, different sample handling protocols may be preferred. Also, with novel blood-based biomarkers and assays entering the field and follow-up experiments to come, we realize the SOP presented here may need fine-tuning, which will only increase adoption of the SOP in a wide range of settings.

To conclude, we established a technology-independent and biomarker-independent SOP for plasma EDTA sample handling, from collection to storage to measurement. We recommend biobanks and clinical trials adopt this SOP, to limit pre-analytical variability on blood biomarker results. Also, once the AD blood-based biomarkers reach clinical implementation, this SOP can be applied to reach optimal results in routine AD diagnostic blood biomarker measurements.

ACKNOWLEDGMENTS

We thank all GBSC members that participated in the inventory study, and all volunteers that donated blood for our research purposes. Further, we acknowledge all beyond the authors on this paper who provided support and guidance in conducting this study, in random order and not limited to Zulaiga Hussainali (Amsterdam UMC), Lynn Boonkamp (Amsterdam UMC), Heather Snyder (Alzheimer's Association), Christopher Weber (Alzheimer's Association), Emily A. Meyers (Alzheimer's Association), Kevin Yarasheski (C2N Diagnostics), Erik Stoops (ADx Neurosciences), Andreas Jeromin (Quanterix), Takaaki Hiraoka (Shimadzu European Innovation Center), and Robert Rissman (University of California). Part of this project is funded through the Alzheimer's Association and by Marie Curie International Training Network. Inge Verberk is supported by research grants from Gieskes-Strijbis Fonds and Alzheimer Nederland (NL-17004). Kaj Blennow is supported by the Swedish Research Council (#2017-00915), the Alzheimer Drug Discovery Foundation (ADDF), USA (#RDAPB-201809-2016615), the Swedish Alzheimer Foundation (#AF-742881), Hjärnfonden, Sweden (#FO2017-0243), the Swedish state under the agreement between the Swedish government and the County Councils, the ALF-agreement (#ALFGBG-715986), the European Union Joint Program for Neurodegenerative Disorders (JPND2019-466-236), and the National Institute of Health (NIH), USA (grant #1R01AG068398-01). Oskar Hansson is supported by the Swedish Research Council (2016-00906), the Knut and Alice Wallenberg foundation

(2017-0383), the Marianne and Marcus Wallenberg foundation (2015.0125), the Strategic Research Area MultiPark (Multidisciplinary Research in Parkinson's disease) at Lund University, the Swedish Alzheimer Foundation (AF-939932), the Swedish Brain Foundation (FO2019-0326), The Parkinson foundation of Sweden (1280/20), the Skåne University Hospital Foundation (2020-000028), Regionalt Forskningsstöd (2020-0314), and the Swedish federal government under the ALF agreement (2018-Projekt0279). Leslie Shaw has grant support from the NIH: NIA ADNI U19 AG024904; ADRC UPenn P30 AG010124; MJFox Foundation for Parkinson's Research grant support; Roche IIS grant support. Henrik Zetterberg is a Wallenberg Scholar supported by grants from the Swedish Research Council (#2018-02532), the European Research Council (#681712), Swedish State Support for Clinical Research (#ALFGBG-720931), the Alzheimer Drug Discovery Foundation (ADDF), USA (#201809-2016862), the AD Strategic Fund and the Alzheimer's Association (#ADSF-21-831376-C, #ADSF-21-831381-C and #ADSF-21-831377-C), the Olav Thon Foundation, the Erling-Persson Family Foundation, Stiftelsen för Gamla Tjänarinnor, Hjärnfonden, Sweden (#FO2019-0228), the European Union's Horizon 2020 research and innovation program under the Marie Skłodowska-Curie grant agreement No. 860197 (MIRIADE), and the UK Dementia Research Institute at UCL. Charlotte Teunissen is supported by the European Commission (Marie Curie International Training Network, JPND), the Dutch Research Council (ZonMW), The Weston Brain Institute, Alzheimer Netherland.

CONFLICTS OF INTEREST

Inge Verberk, Els Misdorp, Jannet Koelewijn, Jana Kindermans, and Teresa Waligorska report no financial disclosures nor conflicts of interest related to the present work or outside the submitted work. Andrew Ball and Dandan Shan are employees of Quanterix Corporation, and hold Quanterix Corporation stock and stock options. Simoa assay development work associated with this study was performed at and funded by Quanterix Corporation. Andrew Ball received a National Institutes of Health (NIH) Rapid Acceleration of Diagnostics grant (RADx 5534) for development/scaling of a SARS-CoV-2 assay, which was paid to the institution and was not associated with this study, and resulted in two provisional patent applications. Outside the submitted work, Kaj Blennow has served as a consultant or at advisory boards for Abcam, Axon, Biogen, JOMDD/Shimadzu, Lilly, MagQu, Prothena, Roche Diagnostics, and Siemens Healthineers, and as data monitoring committee for Julius Clinical and Novartis. All payments were made to him personally. Kaj Blennow is a co-founder of Brain Biomarker Solutions in Gothenburg AB (BBS), which is a part of the GU Ventures Incubator Program. Jeffrey L. Dage is an employee and stockholder of Eli Lilly and Company, which also supports his costs for travel and attending of meetings. Subject matter relating to the p-tau181 assay, methods, reagents, and/or compositions of matter set forth herein are subject to patents and/or patent applications of Eli Lilly and Company. Noelia Fandos is an employee of Araclon Biotech. Oskar Hansson has acquired research support (for the institution) from AVID Radiopharmaceuticals, Biogen, Eli Lilly, Eisai, GE Healthcare, Pfizer, and Roche. In the past 2 years, he has received con-

sultancy/speaker fees from AC Immune, Alzpath, Biogen, Cerveau, and Roche. Christophe Hirtz has a collaboration contract with Shimadzu European Innovation Center including a PhD thesis. Shorena Janelidze is supported by research grants from Alzheimerfonden Kockska stiftelsen Stiftelsen för Gamla Tjänarinnor, and travel grants from the Strategic Research Area MultiPark (Multidisciplinary Research in Parkinson's disease) at Lund University. All payments were made to Lund University. Sungmin Kang and Ryan Lee are employees and stockholders of PeopleBio. Kristopher Kirmess, Matthew Meyer, and Tim West are employees of C2N Diagnostics. C2N has received funding in support of their assay from the following grant sources: NIH, Bright-Focus Foundation, GHR Foundation. Leslie M. Shaw has grant support from NIH: NIA ADNI U19 AG024904; UPenn ADRC P30 AG010124; IIS grant support from Roche; serves on Advisory Boards for Biogen, Roche, FujiRebio, Siemens Healthineers. Henrik Zetterberg is a Wallenberg Scholar supported by grants from the Swedish Research Council (#2018-02532), the European Research Council (#681712), Swedish State Support for Clinical Research (#ALFGBG-720931), the Alzheimer Drug Discovery Foundation (ADDF), USA (#201809-2016862), the AD Strategic Fund and the Alzheimer's Association (#ADSF-21-831376-C, #ADSF-21-831381-C and #ADSF-21-831377-C), the Olav Thon Foundation, the Erling-Persson Family Foundation, Stiftelsen för Gamla Tjänarinnor, Hjärnfonden, Sweden (#FO2019-0228), the European Union's Horizon 2020 research and innovation programme under the Marie Skłodowska-Curie grant agreement No 860197 (MIRIADE), and the UK Dementia Research Institute at UCL. Payments are made to the institution. He has served on scientific advisory boards and/or as consultant for Alector, Eisai, Denali, Roche Diagnostics, Wave, Samumed, Siemens Healthineers, Pinteon Therapeutics, Nervgen, AZTherapies, CogRx, and Red Abbey Labs. These payments were made to him personally. He has given lectures in symposia sponsored by Cellectricon, Fujirebio, Alzecure, and Biogen. Further, he is a chair of the Alzheimer's Association Global Biomarker Standardization Consortium and a chair of the Alzheimer's Association Biofluid-Based Biomarker PIA (no payments), and is a co-founder of Brain Biomarker Solutions in Gothenburg AB (BBS), which is a part of the GU Ventures Incubator Program (payments made to him personally). Rebecca M. Edelmayer is a full-time employee of the Alzheimer's Association. She serves on the external advisory board of the TREAT-AD Consortium, NIH (2020-Present; no payments made), and the MODEL-AD Consortium, NIH (2019-Present; no payments made). Charlotte Teunissen has a collaboration contract with ADx Neurosciences and Quanterix, and performed contract research for or received grants from the Alzheimer's Association for the present work, and from AxonNeurosciences, Biogen, Boehringer, Brainstorm Therapeutics, EIP Pharma, Esai, Janssen Prevention Center, Roche, Toyama and Vivoryon outside the submitted work. Research of Charlotte Teunissen is supported by the European Commission (Marie Curie International Training Network, grant agreement No 860197 (MIRIADE), and JPND), Health Holland, the Dutch Research Council (ZonMW), Alzheimer Drug Discovery Foundation, The Selfridges Group Foundation, Alzheimer Netherlands, Alzheimer Association. Further, she is a recipient of ABOARD, which is a public-private partnership receiving

funding from ZonMW (#73305095007) and Health~Holland, Topsector Life Sciences & Health (PPP-allowance; #LSHM20106). More than 30 partners participate in ABOARD. ABOARD also receives funding from Edwin Bouw Fonds and Gieskes-Strijbisfonds. Also, Charlotte Teunissen serves on the editorial board of *Medidact Neurologie/Springer* of the *Neuromethods book series*, on the editorial board of *Alzheimer's Research and Therapy* and of *Neurology: Neuroimmunology & Neuroinflammation*. All funding is paid to her institution.

ORCID

Inge M. W. Verberk  <https://orcid.org/0000-0003-0341-7445>

REFERENCES

- Nakamura A, Kaneko N, Villemagne VL, et al. High performance plasma amyloid-beta biomarkers for Alzheimer's disease. *Nature*. 2018;554:249-254.
- Lim YY, Maruff P, Kaneko N, et al. Plasma amyloid-beta biomarker associated with cognitive decline in preclinical Alzheimer's disease. *J Alzheimers Dis*. 2020;77:1057-1065.
- Verberk IMW, Slot RE, Verfaillie SCJ, et al. Plasma amyloid as prescreener for the earliest Alzheimer pathological changes. *Ann Neurol*. 2018;84:648-658.
- Fandos N, Pérez-Grijalba V, Pesini P, et al. Plasma amyloid beta 42/40 ratios as biomarkers for amyloid beta cerebral deposition in cognitively normal individuals. *Alzheimers Dement (Amst)*. 2017;8:179-187.
- De Meyer S, Schaefferbeke JM, Verberk IMW, et al. Comparison of ELISA- and SIMOA-based quantification of plasma Aβ ratios for early detection of cerebral amyloidosis. *Alzheimers Res Ther*. 2020;12:162.
- Chatterjee P, Pedrini S, Stoops E, et al. Plasma glial fibrillary acidic protein is elevated in cognitively normal older adults at risk of Alzheimer's disease. *Transl Psychiatry*. 2021;11:27.
- An SSA, Lee BS, Yu JS, et al. Dynamic changes of oligomeric amyloid β levels in plasma induced by spiked synthetic Aβ(42). *Alzheimers Res Ther*. 2017;9:86-86.
- Verberk IMW, Thijssen E, Koelewijn J, et al. Combination of plasma amyloid beta(1-42/1-40) and glial fibrillary acidic protein strongly associates with cerebral amyloid pathology. *Alzheimers Res Ther*. 2020;12:118.
- Ovod V, Ramsey KN, Mawuenyega KG, et al. Amyloid beta concentrations and stable isotope labeling kinetics of human plasma specific to central nervous system amyloidosis. *Alzheimers Dement*. 2017;13:841-849.
- Janelidze S, Mattsson N, Palmqvist S, et al. Plasma P-tau181 in Alzheimer's disease: relationship to other biomarkers, differential diagnosis, neuropathology and longitudinal progression to Alzheimer's dementia. *Nat Med*. 2020;26:379-386.
- Thijssen EH, La Joie R, Wolf A, et al. Diagnostic value of plasma phosphorylated tau181 in Alzheimer's disease and frontotemporal lobar degeneration. *Nat Med*. 2020;26:387-397.
- Karikari TK, Pascoal TA, Ashton NJ, et al. Blood phosphorylated tau 181 as a biomarker for Alzheimer's disease: a diagnostic performance and prediction modelling study using data from four prospective cohorts. *Lancet Neurol*. 2020;19:422-433.
- Mattsson N, Zetterberg H, Janelidze S, et al. Plasma tau in Alzheimer disease. *Neurology*. 2016;87:1827-1835.
- Oeckl P, Halbgebauer S, Anderl-Straub S, et al. Glial fibrillary acidic protein in serum is increased in Alzheimer's disease and correlates with cognitive impairment. *J Alzheimers Dis*. 2019;67:481-488.
- Verberk IMW, Laarhuis MB, Van Den Bosch KA, et al. Serum markers glial fibrillary acidic protein and neurofilament light for prognosis and monitoring in cognitively normal older people: a prospective memory clinic-based cohort study. *Lancet Healthy Longev*. 2021;2:e87-e95.
- Rajan KB, Aggarwal NT, McAninch EA, et al. Remote blood biomarkers of longitudinal cognitive outcomes in a population study. *Ann Neurol*. 2020;88:1065-1076.
- Mattsson N, Andreasson U, Zetterberg H, Blennow K, Alzheimer's Disease Neuroimaging I. Association of plasma neurofilament light with neurodegeneration in patients with Alzheimer disease. *JAMA Neurol*. 2017;74:557-566.
- Khalil M, Teunissen CE, Otto M, et al. Neurofilaments as biomarkers in neurological disorders. *Nat Rev Neurol*. 2018;14:577-589.
- Abdelhak A, Huss A, Kassubek J, Tuman H, Otto M. Serum GFAP as a biomarker for disease severity in multiple sclerosis. *Sci Rep*. 2018;8:14798.
- Jack CR, Bennett DA, Blennow K, et al. NIA-AA Research Framework: toward a biological definition of Alzheimer's disease. *Alzheimers Dement*. 2018;14:535-562.
- Shaw LM, Arias J, Blennow K, et al. Appropriate use criteria for lumbar puncture and cerebrospinal fluid testing in the diagnosis of Alzheimer's disease. *Alzheimers Dement*. 2018;14:1505-1521.
- Mattsson N, Andreasson U, Persson S, et al. CSF biomarker variability in the Alzheimer's Association quality control program. *Alzheimers Dement*. 2013;9:251-261.
- Vos SJB, Visser PJ, Verhey F, et al. Variability of CSF Alzheimer's disease biomarkers: implications for clinical practice. *PLoS One*. 2014;9:e100784.
- Willems EAJ, Maurik IS, Tijms BM, et al. Diagnostic performance of Elecsys immunoassays for cerebrospinal fluid Alzheimer's disease biomarkers in a nonacademic, multicenter memory clinic cohort: the ABIDE project. *Alzheimers Dement (Amst)*. 2018;10:563-572.
- Blennow K, Shaw LM, Stomrud E, et al. Predicting clinical decline and conversion to Alzheimer's disease or dementia using novel Elecsys Aβ(1-42), pTau and tTau CSF immunoassays. *Sci Rep*. 2019;9:19024.
- Boulo S, Kuhlmann J, Andreasson U, et al. First amyloid beta1-42 certified reference material for re-calibrating commercial immunoassays. *Alzheimers Dement*. 2020;16:1493-1503.
- Hansson O, Mikulskis A, Fagan AM, et al. The impact of preanalytical variables on measuring cerebrospinal fluid biomarkers for Alzheimer's disease diagnosis: a review. *Alzheimers Dement*. 2018;14:1313-1333.
- Del Campo M, Mollenhauer B, Bertolotto A, et al. Recommendations to standardize preanalytical confounding factors in Alzheimer's and Parkinson's disease cerebrospinal fluid biomarkers: an update. *Biomark Med*. 2012;6:419-430.
- Janelidze S, Stomrud E, Brix B, Hansson O. Towards a unified protocol for handling of CSF before beta-amyloid measurements. *Alzheimers Res Ther*. 2019;11:63.
- Hansson O, Rutz S, Zetterberg H, et al. Pre-analytical protocol for measuring Alzheimer's disease biomarkers in fresh CSF. *Alzheimers Dement (Amst)*. 2020;12:e12137.
- Hansson O, Batrla R, Brix B, et al. The Alzheimer's Association international guidelines for handling of cerebrospinal fluid for routine clinical measurements of amyloid beta and tau. *Alzheimers Dement*. 2021:1575-1582.
- O'bryant SE, Gupta V, Henriksen K, et al. Guidelines for the standardization of preanalytical variables for blood-based biomarker studies in Alzheimer's disease research. *Alzheimers Dement*. 2015;11:549-560.
- Rózga M, Bittner T, Batrla R, Karl J. Preanalytical sample handling recommendations for Alzheimer's disease plasma biomarkers. *Alzheimers Dement (Amst)*. 2019;11:291-300.
- Ashton NJ, Suárez-Calvet M, Karikari TK, et al. Effects of pre-analytical procedures on blood biomarkers for Alzheimer's pathophysiology, glial activation, and neurodegeneration. *Alzheimer Dement*. 2021;13(1):e12168.

35. Lachno DR, Vanderstichele H, Groote G, et al. The influence of matrix type, diurnal rhythm and sample collection and processing on the measurement of plasma β -amyloid isoforms using the INNO-BIA plasma A β forms multiplex assay. *JNHA*. 2009;13:220-225.
36. Walter M, Wiltfang J, Vogelgsang J. Pre-analytical sampling and storage conditions of amyloid-beta peptides in venous and capillary blood. *J Alzheimers Dis*. 2020;78:529-535.
37. Chang J-F, Liu H-C, Chen HH, et al. Effect of times to blood processing on the stability of blood proteins associated with dementia. *Dement Geriatr Cogn Disord*. 2020;49:303-311.
38. Altmann P, Leutmezer F, Zach H, et al. Serum neurofilament light chain withstands delayed freezing and repeated thawing. *Sci Rep*. 2020;10:19982.
39. Lewczuk P, Ermann N, Andreasson U, et al. Plasma neurofilament light as a potential biomarker of neurodegeneration in Alzheimer's disease. *Alzheimers Res Ther*. 2018;10:71.
40. Keshavan A, Heslegrave A, Zetterberg H, Schott JM. Stability of blood-based biomarkers of Alzheimer's disease over multiple freeze-thaw cycles. *Alzheimers Dement (Amst)*. 2018;10:448-451.
41. West T, Kirmess KM, Meyer MR, et al. A blood-based diagnostic test incorporating plasma A β 42/40 ratio, ApoE proteotype, and age accurately identifies brain amyloid status: findings from a multi cohort validity analysis. *Mol Neurodegener*. 2021;16:30.
42. Pesini P, Pérez-Grijalba V, Monleón I, et al. Reliable measurements of the beta-amyloid pool in blood could help in the early diagnosis of AD. *Int J Alzheimers Dis*. 2012;2012:604141.
43. Pérez-Grijalba V, Fandos N, Canudas J, et al. Validation of immunoassay-based tools for the comprehensive quantification of Abeta40 and Abeta42 peptides in plasma. *J Alzheimers Dis*. 2016;54:751-762.
44. Brickman AM, Manly JJ, Honig LS, et al. Plasma p-tau181, p-tau217, and other blood-based Alzheimer's disease biomarkers in a multi-ethnic, community study. *Alzheimers Dement*. 2021: 1353-1364.
45. Andreasson U, Perret-Liaudet A, Van Waalwijk Van Doorn LJC, et al. A practical guide to immunoassay method validation. *Front Neurol*. 2015;6:179.
46. Liu H-C, Chiu M-J, Lin C-H, Yang S-Y. Stability of plasma amyloid-beta 1-40, amyloid-beta 1-42, and total tau protein over repeated freeze/thaw cycles. *Dement Geriatr Cogn Dis Extra*. 2020;10:46-55.
47. Simren J, Ashton NJ, Blennow K, Zetterberg H. Blood neurofilament light in remote settings: alternative protocols to support sample collection in challenging pre-analytical conditions. *Alzheimers Dement (Amst)*. 2021;13:e12145.
48. Willemse E, Uffelen K, Brix B, Engelborghs S, Vanderstichele H, Teunissen C. How to handle adsorption of cerebrospinal fluid amyloid beta (1-42) in laboratory practice? Identifying problematic handlings and resolving the issue by use of the Abeta42/Abeta40 ratio. *Alzheimers Dement*. 2017;13:885-892.
49. Thijssen EH, Verberk IMW, Vanbrabant J, et al. Highly specific and ultrasensitive plasma test detects Abeta(1-42) and Abeta(1-40) in Alzheimer's disease. *Sci Rep*. 2021;11:9736.
50. Palmqvist S, Janelidze S, Quiroz YT, et al. Discriminative accuracy of plasma phospho-tau217 for Alzheimer disease vs other neurodegenerative disorders. *JAMA*. 2020;324:772-781.

SUPPORTING INFORMATION

Additional supporting information may be found in the online version of the article at the publisher's website.

How to cite this article: Verberk IMW, Misdorp EO, Koelewijn J, et al. Characterization of pre-analytical sample handling effects on a panel of Alzheimer's disease-related blood-based biomarkers: Results from the Standardization of Alzheimer's Blood Biomarkers (SABB) working group. *Alzheimer's Dement*. 2021;:1-14. <https://doi.org/10.1002/alz.12510>