

EFFECT OF SIMULATED MICROGRAVITY ON THE VIRULENCE PROPERTIES OF THE OPPORTUNISTIC BACTERIAL PATHOGEN *STAPHYLOCOCCUS AUREUS*

Helena Rosado

School of Pharmacy, University of London, United Kingdom
helena.rosado@pharmacy.ac.uk

Paul D. Stapleton

School of Pharmacy, University of London, United Kingdom
paul.stapleton@pharmacy.ac.uk

Peter W. Taylor

School of Pharmacy, University of London, United Kingdom
peter.taylor@pharmacy.ac.uk

ABSTRACT

Extended manned space flight will result in a diminution of immune status and cause profound changes in the human bacterial microbiota, leading to increased risk of infection. Experiments conducted during short-term flight suggest that growth in microgravity leads to increases in bacterial antibiotic resistance and to cell wall changes. Growth under low-shear modelled microgravity (LSMMG) indicated that a reduced gravitational field acts as an environmental signal for expression of enhanced bacterial virulence in Gram-negative pathogens. We examined the effect of simulated microgravity on parameters of virulence in clinical isolates of *Staphylococcus aureus*. Three strains were grown under LSMMG in a High Aspect Ratio Vessel and compared with cells grown under normal gravity (NG) in the same vessel. There were no significant differences in the antibiotic susceptibility, growth rate or morphology of staphylococci grown under LSMMG compared to NG. LSMMG-induced reductions in synthesis of the pigment staphyloxanthin were noted. Strains secreted less protein under LSMMG and reductions in haemolysin secretion were found. Reduced expression of the major virulence determinant α -toxin in the microgravity environment was found by gene amplification. Thus, in contrast to published data on Gram-negative pathogens, simulated microgravity reduces the expression of key virulence determinants of *S. aureus*.

INTRODUCTION

Plans to resume manned missions to the Moon and to launch manned flights from the lunar surface for the purpose of Martian exploration will provide enormous challenges to those responsible for the provision of biomedical support. In addition to the well-documented extended flight risks associated with microgravity-induced decreases in bone mineral density, psychological problems due to isolation, noise, confinement and a restricted working environment, muscular atrophy, decreased cardiovascular performance, and prolonged exposure to ionising and non-ionising forms of radiation [1], microbial infections will almost certainly arise due to decreases in immune function. Analysis of medical events among astronauts aboard the Russian space station Mir from March

1995 to June 1998 indicated that a significant number of episodes of infection occurred, including conjunctivitis and acute respiratory and dental infections [2]. In addition, injury and trauma, such as lacerations and open fractures, are likely to occur on long missions and will require prophylactic administration of antibiotics to prevent serious wound infection.

On-board infections will most likely originate from the endogenous human flora of the crew, although microbial contamination of the fabric of the spacecraft and its air and water supply has been noted [3]. Even brief space flight induces changes in the composition of the intestinal [4], oral [5,6] and nasal [6] bacterial microflora and crew members are susceptible to in-flight cross-contamination with opportunistic pathogens such as *Staphylococcus aureus* via the upper respiratory

tract [6]. The negative impact of space travel on the function of cells of the immune system [7,8] are exacerbated by reductions in the diversity of the normal bacterial flora and a relative increase in the numbers of opportunistic pathogens at sites such as the nasal passage [9].

Treatment of on-board infections could be compromised by reversible increases in antibiotic resistance. Experiments aboard Soviet [10,11] and American [12,13] vessels have indicated that the antibiotic susceptibility of both Gram-positive and Gram-negative bacteria may be significantly reduced during flight. For example, the minimum inhibitory concentration (MIC) of colistin and kanamycin required to kill *Escherichia coli* increased fourfold in comparison to ground experiments when determined aboard Salyut 7; the reduction in oxacillin, erythromycin and chloramphenicol susceptibility of a *S. aureus* isolate was accompanied by large increases in the thickness of the cell wall, an effect often intimately associated with changes in sensitivity to antibiotics. These on-board experiments strongly suggest that growth of these medically important bacteria in a microgravity environment changes the bacterial phenotype in a way that may render them antibiotic resistant. Also of concern for the well being of flight crew is the gathering evidence that microgravity may act as an environmental signal for expression of enhanced bacterial virulence [14]. Nickerson and coworkers [15] determined that *Salmonella enterica* serovar Typhimurium grown under low-shear modelled microgravity (LSMMG) using a high aspect ratio vessel (HARV) displayed enhanced virulence for mice compared to bacteria grown under normal gravity: LSMMG-grown cells had a decreased LD₅₀, produced shortened time to death of infected test animals, and more readily colonized the liver and spleen. The processes involved in LSMMG-induced gene regulation appear to be novel and may be microgravity-specific [16]. We believe that there is an urgent need for these pioneering studies to be extended to include other groups of pathogens, particularly opportunistic Gram-positive bacteria frequently associated with the human microflora and likely to pose a risk of infection on extended missions. We have therefore investigated the effect of simulated microgravity on the parameters of antibiotic susceptibility and virulence in clinical isolates of the Gram-positive pathogen *S. aureus*.

MATERIALS AND METHODS

Bacterial strains and reagents. The methicillin susceptible *S. aureus* (MSSA) isolates RF1, RF6 and RF11 were from clinical samples processed at the Royal Free Hospital, London and were a gift from J.M.T. Hamilton-Miller. The following companies kindly provided the antibiotics used in this study: GlaxoSmithKline (flucloxacillin), Eli Lilly (vancomycin hydrochloride) and Sanofi Aventis (erythromycin).

Bacterial culture. Bacterial cells were grown in Müller-Hinton (MH) broth (Oxoid, Basingstoke, UK) using Synthecon RCCS-1 HARVs (obtained from Cellon S.A., Bereldange, Luxembourg) housed in a 37°C incubator. Shake flask MH broth cultures were incubated for 16 h at 37°C, diluted 1:50 in fresh MH broth and transferred into the bioreactor compartment. Care was taken to ensure that the reactor was completely filled with medium and that there was a complete absence of air bubbles. The bioreactors were then orientated to grow cells under conditions of LSMMG (rotation about the horizontal axis) or normal gravity (NG; rotation about the vertical axis). In all experiments, LSMMG and NG cultures were grown simultaneously with a rotation rate of 25 rpm for up to 24 h. To determine growth rates, samples were removed *via* the sampling port and the OD₆₀₀ measured. In all other experiments, cells were harvested after 24 h incubation. The culture supernatants were concentrated 30-fold using Vivaspin 20 ultrafiltration spin columns (Generon Ltd., Berkshire, UK).

MIC. The MICs for flucloxacillin, vancomycin and erythromycin against the three MSSA isolates were determined by the broth dilution method using serial twofold dilutions of the antibiotics. Assays were performed in 96-well microtitre trays with an inoculum of 10⁴ CFU in 100 µl of MH broth. *S. aureus* ATCC29213 was used as a reference strain to ensure comparability with published data. MIC values were obtained after incubation at 37°C for 24 h. The MIC was determined to be the lowest antibiotic concentration at which no visible bacterial growth occurred.

Electron microscopy. For scanning electron microscopy (SEM), bacteria were recovered by centrifugation and washed twice with phosphate buffered saline (PBS). Cells were fixed in 1.5% w/v glutaraldehyde for at least 2 h at room temperature,

washed once with 70% ethanol and twice in 100% ethanol. Air-dried, gold-coated preparations were examined using a FEI XL30 scanning electron microscope. For transmission electron microscopy (TEM), the cells were recovered by centrifugation and washed twice in PBS. Bacteria were fixed in 1.5% w/v glutaraldehyde for at least 2 h at room temperature, treated with osmium tetroxide and embedded in epoxy resin. Sectioning and staining with uranyl acetate was followed by Reynolds' lead citrate. Ultra-thin sections were viewed and photographed using a Philips 201 transmission electron microscope.

Assays for staphylococcal haemolytic activity. Defibrinated sheep or rabbit blood (10 ml; E&O Laboratories, Bonnybridge, UK) was centrifuged (1,000 g, 15 min), the erythrocytes washed three times with PBS and then suspended in cold sterile PBS to a concentration of 1% v/v. A normalized volume of culture supernatant was added to aliquots of this suspension to give a combined final volume of 1.5 ml and the mixtures incubated at 37°C for 30 min, followed by 25 min at 4°C. After centrifugation to remove intact cells, the degree of erythrocyte lysis was determined spectrophotometrically ($A_{540\text{ nm}}$).

Extraction and quantification of carotenoids. Staphyloxanthin and intermediate carotenoids were extracted and quantified according to Wieland and coworkers [17]. Bacteria were harvested by centrifugation (3,000 g, 10 min) and washed twice with PBS. The packed cells were either extracted immediately or could be maintained at -20°C for up to 3 months without their carotenoid content being affected. The cells (10 mg dry weight) were suspended in 500 μ l of methanol, held at 55°C in water bath for 5 minutes, cooled and extracts obtained by centrifugation. The extraction was repeated twice, until no further pigment could be extracted. Carotenoids were estimated quantitatively by measuring absorbance of solutions at 462nm, the absorbance maximum of the primary carotenoid pigment staphyloxanthin.

Expression of virulence determinants. Proteins were separated by SDS-polyacrylamide gel electrophoresis (SDS-PAGE); the concentration of acrylamide used was 10% w/v. Proteins were visualised by staining with Coomassie blue.

RESULTS AND DISCUSSION

There are a number of studies demonstrating that a range of bacteria grown under batch culture conditions during space flight yield higher final cell concentrations and total biomass, have increased growth rate and a shorter lag phase in comparison to terrestrial laboratory cultures [18-20]. These effects are attributed in the main to the influence of reduced gravity and this contention is supported by observations of bacterial growth under LSMMG. Thus, the Gram-negative bacteria *Salmonella enterica* [21] and *E. coli* [22] have been shown to display increased rates of division and reach a higher cell density under LSMMG, although these effects could not be demonstrated with *Pseudomonas aeruginosa* [23]. These studies were undertaken using minimal salts medium: when *S. enterica* was examined following growth in complex Luria-Bertani broth, the growth kinetics of LSMMG-grown cells were identical to those obtained under NG conditions [21]. As changes in growth kinetics induced by LSMMG may impact on other parameters of interest, we compared the growth rates of *S. aureus* grown under NG and LSMMG (Fig. 1). No differences in growth kinetics over the 24h culture period were seen with any of the three clinical isolates examined. As staphylococci have complex nutritional requirements, these experiments could not be undertaken using chemically defined minimal salts media. Thus, our data obtained with nutritionally complex MH broth lend some support to the view that the combination of minimal medium and LSMMG induce increased metabolic activity that drives growth [24].

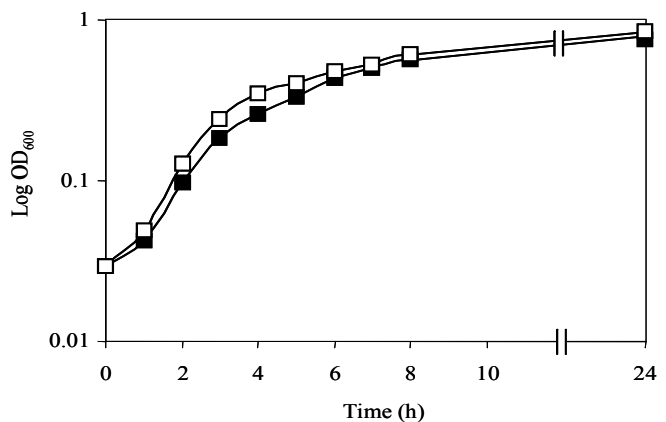


Fig. 1: Growth kinetics of *S. aureus* RF1 under normal gravity (■) and simulated microgravity (□). Similar growth curves were obtained for isolates RF6 and RF11.

There were also no discernable differences in staphylococcal cell morphology as revealed by SEM (Fig. 2) or TEM (Fig. 3). This is in marked contrast to results obtained with a *S. aureus* strain isolated from the automicroflora of the astronaut J. L. Crétien; when cultured in nutritionally complex medium aboard Salyut 7 in July 1982, electron microscopy revealed large increases in the thickness of the cell wall in comparison to the earth control [10,12]. The reasons for this disparity are unclear but factors other than microgravity may have been brought to bear during the space flight experiments.

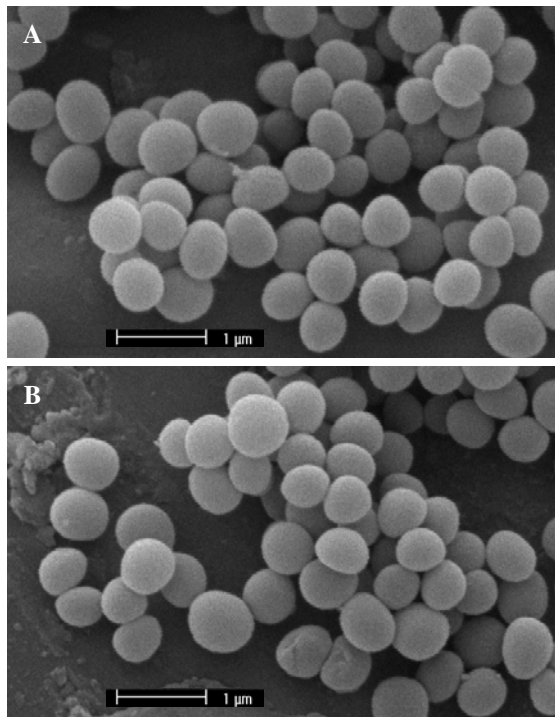


Fig. 2: Scanning electron microscopy images of *S. aureus* RF6 grown under normal gravity (A) and simulated microgravity (B).

In marked contrast to in-flight investigations conducted in nutritionally complex medium with

the Crétien *S. aureus* isolate [10,12], we found no changes in the susceptibility of RF1, RF6 and RF11 to the macrolide antibiotic erythromycin, the β -lactam flucloxacillin and the glycopeptide vancomycin (Table 1). These agents were selected for investigation because they interact with different targets in the bacterial cell: erythromycin interrupts the early stages of protein synthesis by binding to the 50S ribosomal subunit whereas flucloxacillin and vancomycin interfere with different steps in cell wall peptidoglycan synthesis.

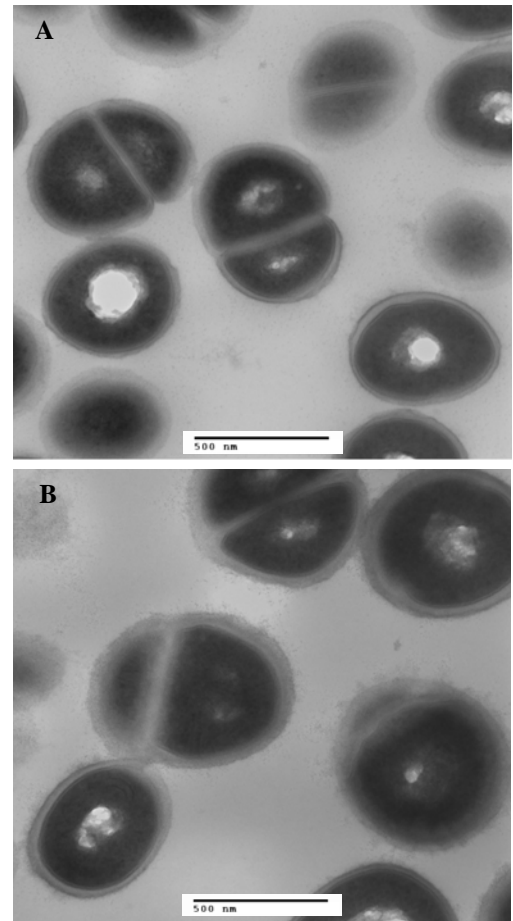


Fig. 3: Transmission electron microscopy images of sections of *S. aureus* RF6 grown under normal gravity (A) and simulated microgravity (B).

Antimicrobial Agent	Minimum inhibitory concentration (mg/L)					
	RF1		RF6		RF11	
	NG	LSMMG	NG	LSMMG	NG	LSMMG
Erythromycin	1	1	0.25	0.12	>128	>128
Flucloxacillin	0.25	0.12	0.25	0.25	0.12	0.12
Vancomycin	1	1	0.5	0.5	1	1

Table 1: Influence of simulated microgravity on the susceptibility of *S. aureus* isolates RF1, RF6 and RF11 to antibiotics (NG, normal gravity; LSMMG, low-shear modelled microgravity).

Growth in a microgravity environment had an impact on a number of factors associated with the virulence of *S. aureus*. The majority of *S. aureus* strains produce carotenoid pigments that impart the golden hue to colonies of this pathogen; the main pigment is staphyloxanthin, a triterpenoid esterified with a C15 fatty acid [25]. A recent study has linked carotenoid pigment synthesis to staphylococcal virulence; mutants unable to synthesise these molecules have impaired survival within neutrophils and are less pathogenic in a mouse subcutaneous abscess model [26]. All three strains that we examined produced less staphyloxanthin when grown under simulated microgravity compared to NG-grown cells (Fig. 4).

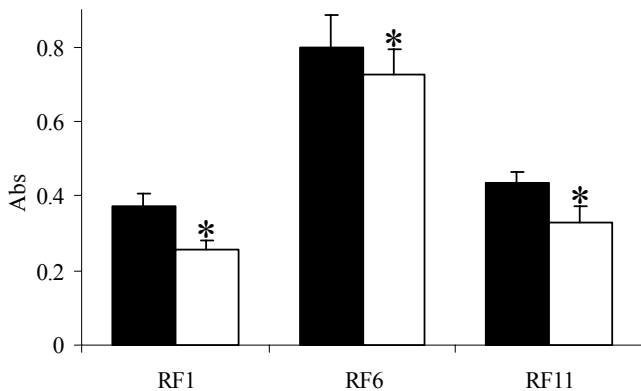


Fig. 4: Production of staphyloxanthin by *S. aureus* isolates grown under normal gravity (■) and simulated microgravity (□). Error bars represent 1SD; n=6. *Paired Student's *t* test, $p < 0.01$.

Staphylococcal pathogenesis is multifactorial and involves secreted proteins that include cytotoxins, tissue-degrading enzymes and superantigens. In addition, cell surface-bound proteins that recognize adhesive matrix molecules such as fibronectin- and collagen-binding protein, along with cell surface components such as the capsule and peptidoglycan, play a key role in determining the capacity of staphylococci to cause disease in humans. Secreted proteins enable the organism to attack the cellular and structural elements of diverse tissues and organs of the infected host and contribute to the spread of the pathogen and its ability to produce symptoms of disease. We have therefore focused our attention on some of these key secreted virulence determinants. The three isolates secrete a wide array of proteins into the surrounding medium and there are clear differences in protein secretion patterns between these strains (Fig. 5). Microgravity cultures secreted

less protein than NG-cultured bacteria and the quantity of some individual proteins recovered from the growth medium was markedly reduced. The largest reduction in protein secretion occurred with RF6 (Fig. 5). Interestingly, the secretion of a few proteins was increased under LSSMG: for example, RF6 and RF11 appeared to increase the secretion of a protein with a molecular mass of ca 24kDa. We are in the process of identifying the nature of this protein.

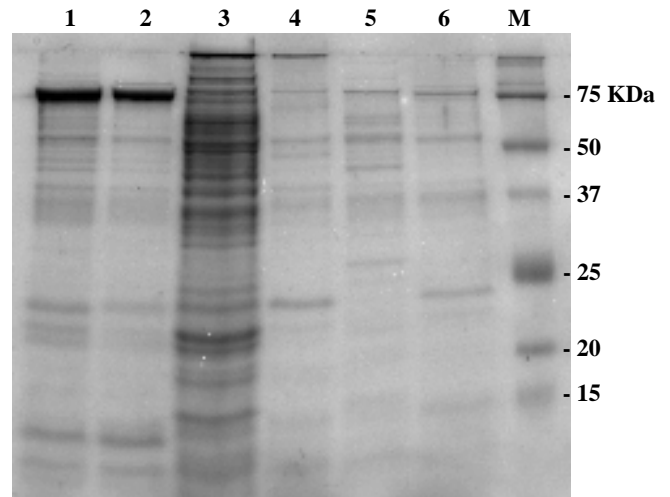


Fig. 5: SDS-PAGE of proteins secreted by *S. aureus* isolates visualised with Coomassie blue. Cells were grown under normal gravity (NG) and simulated microgravity (LSSMG). Lanes: (1) RF1 NG; (2) RF1 LSSMG; (3) RF6 NG; (4) RF6 LSSMG; (5) RF11 NG; (6) RF11 LSSMG; (7) Molecular weight marker.

Most *S. aureus* isolates secrete one or more cytotoxic proteins that have the capacity to lyse red blood cells. α -toxin, the *hla* gene product, is one of the most potent bacterial toxins known and contributes significantly to morbidity and mortality in human infections [27]. A significant number of *S. aureus* strains produce additional haemolysins such as β -toxin, δ -toxin, γ -toxin and other less well-characterised biocomponent toxins [27]. The three isolates that we have examined secreted toxins that lysed erythrocytes from sheep blood (Fig. 6a); all the major membrane-active staphylococcal exotoxins possess lytic activity against erythrocytes of this animal species [27,28]. Growth under LSSMG reduced the expression of sheep erythrocyte haemolysins in all isolates; with RF6 the effect was marked with toxin secretion almost completely absent. As the β -haemolysin, in contrast to the α -

and δ - forms, is unable to lyse rabbit erythrocytes [28], we examined the capacity of culture supernatants to lyse red cells from this animal species (Fig. 6b). LSMMG-grown bacteria possessed less haemolytic activity and the largest difference was again found with strain RF6; comparison of Fig. 6a and 6b indicates that β -toxin activity made a significant contribution to the overall lytic profile of RF6 against sheep erythrocytes.

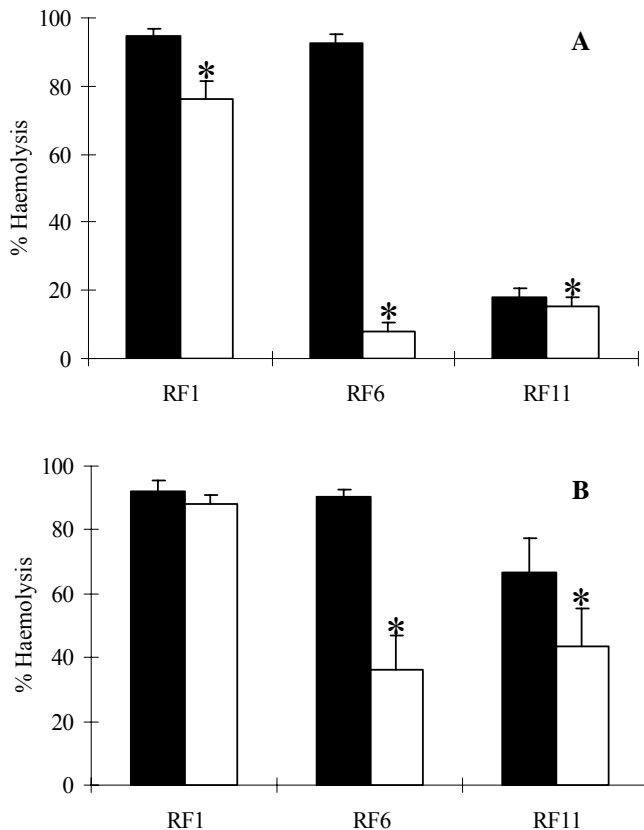


Fig. 6: Secretion of sheep (A) and rabbit (B) erythrocyte haemolysins by *S. aureus* strains grown under normal gravity (■) and simulated microgravity (□). Error bars represent 1SD; n=5-6. *Paired Student's *t* test, $p < 0.01$.

Few studies have been undertaken to determine the effect of reduced gravitational vectors on the capacity of pathogenic bacteria to cause infection, a factor that may impact on the well being of flight crew with poor immune status. Nickerson and colleagues [15,24] have provided strong evidence that growth in LSMMG substantially increases the lethality of *S. enterica* for mice and increased their capacity to survive in stressed environments, including survival within macrophages. DNA microarray analysis determined that LSMMG

differentially regulated the expression of a large number of genes of functional diversity; although the regulatory elements of the LSMMG-mediated phenotype have yet to be identified, there is evidence that the ferric uptake regulator *fur* is involved in the LSMMG response [16]. As the virulence of Gram-negative pathogens such as *S. enterica* is less reliant on the elaboration of extracellular proteins that damage the infected host than specialised Gram-positive pathogens such as members of the streptococci and staphylococci, we examined the effect of LSMMG on the expression of factors known to mediate the pathogenesis of *S. aureus*. As these organisms constitute a ubiquitous threat to human health in a variety of scenarios, modulation of virulence by mechanical stimuli such as microgravity should throw light on those factors that mediate their capacity to cause disease. Although we have not directly measured LSMMG-induced changes in the infectivity of staphylococci, we have shown that, in sharp contrast to the data produced with Gram-negative bacteria, factors that correlate with virulence are down regulated to a greater or a lesser extent by LSMMG cultivation. Moreover, we found no evidence that microgravity decreased the susceptibility of *S. aureus* to antibiotics and it is difficult to reconcile this outcome with the experiments conducted aboard Salyut 7, Challenger and Discovery in the period 1982-1992, save that influences other than gravity may play a role in determining outcome in the space environment [29]. We are currently attempting to determine the underlying regulatory processes that are responsible for the expression of this interesting bacterial phenotype.

REFERENCES

1. Grigoriev AI, Kozlovskaya IB, Potapov AN. Goals of biomedical support of a mission to Mars and possible approaches to achieving them. *Aviat Space Environ Med* 2002;73:379-384.
2. Ball JR, Evans CH. Safe passage: astronaut care for exploration missions. Washington DC: National Academy Press; 2001.
3. Castro VA, Thrasher AN, Healy M, Ott CM, Pierson DL. Microbial characterization during early habitation of the International Space Station. *Microb Ecol* 2004;47:119-126.

4. Lencner AA, Lencner CP, Mikelsaar ME, Tjuri ME, Toom MA, Valjaots ME, Silov VM, Liz'ko NN, Legenkov VI, Reznikov IM. Die quantitative Zusammensetzung der Lactoflora des Verdauungstrakt vor und nach kosmischen Flügen unterschiedlicher Dauer. *Nahrung* 1984;28:607-613.
5. Brown LR, Fromme WJ, Handler SF, Wheatcroft MG, Johnston DA. Effect of Skylab missions on clinical and microbiologic aspects of oral health. *J Amer Dent Assoc* 1976;93:357-363.
6. Decelle JG, Taylor GR. Autoflora in the upper respiratory tract of Apollo astronauts. *Appl Environ Microbiol* 1976;32:659-665.
7. Hales NW, Yamauchi K, Alicea A, Sundaresan A, Pellis NR, Kulkarni AD. A countermeasure to ameliorate immune dysfunction in *in vitro* simulated microgravity environment: role of cellular nucleotide nutrition. *In Vitro Cell Dev Biol Anim* 2002;38:213-217.
8. Kaur I, Simons ER, Castro VA, Ott, CM, Pierson DL. Changes in monocyte functions of astronauts. *Brain Behav Immun* 2005;19:547-54.
9. Nefedov YG, Shilov VM, Koustantinova IV, Zaloguev SN. Microbiological and immunological aspects of extended manned space flights. *Life Sci Space Res* 1971;9:11-16.
10. Tixador R, Richoilley G, Gasset G, Planel H, Moatti N, Lapchine L, Enjalbert L, Raffin J, Bost R, Zaloguev SN, Bragina MP, Moroz AF, Antsiferova NG, Kirilova FM. Preliminary results of Cytos 2 experiment. *Acta Astronaut* 1985;12:131-134.
11. Tixador R, Richoilley G, Gasset G, Templier J, Bes JC, Moatti N, Lapchine L. Study of minimal inhibitory concentration of antibiotics on bacteria cultured *in vitro* in space (Cytos 2 experiment). *Aviat Space Environ Med* 1985;56:748-751.
12. Lapchine L, Moatti N, Gasset G, Richoilley G, Templier J, Tixador R. Antibiotic activity in space. *Drugs Exptl Clin Res* 1985;12:933-938.
13. Tixador R, Gasset G, Eche B, Moatti N, Lapchine L, Woldringh C, Toorop P, Moatti JP, Delmotte F, Tap G. Behavior of bacteria and antibiotics under space conditions. *Aviat Space Environ Med* 1994;65:551-556.
14. Nickerson CA, Ott, CM, Wilson JW, Ramamurthy R, LeBlanc L, Höner zu Bentrup K, Hammond T, Pierson DL. Low-shear modeled microgravity: a global environmental regulatory signal affecting bacterial gene expression, physiology, and pathogenesis. *J Microbiol Methods* 2003;54:1-11.
15. Nickerson CA, Ott CM, Mister SJ, Morrow BJ, Burns-Keliher L, Pierson DL. Microgravity as a novel environmental signal affecting *Salmonella enterica* serovar Typhimurium virulence. *Infect Immun* 2000;68:3147-3152.
16. Wilson JW, Ramamurthy R, Porwollick S, McClelland M, Hammond T, Allen P, Ott CM, Pierson DL, Nickerson DL. Microarray analysis identifies *Salmonella* genes belonging to the low-shear modeled microgravity regulon. *Proc Natl Acad Sci USA* 2002;99:13807-13812.
17. Wieland B, Feil C, Gloria-Maercker E, Thumm G, Lechner M, Bravo J-M, Poralla K, Götz F. Genetic and biochemical analyses of the biosynthesis of the yellow carotenoid 4,4'-diaponeurosporene of *Staphylococcus aureus*. *J Bacteriol* 1994;176:7719-7726.
18. Mennigmann HD, Lange M. Growth and differentiation of *Bacillus subtilis* under microgravity conditions. In: Longdon N, David V (Eds.), *Biorack on Spacelab D1: an overview of the first flight of Biorack, an ESA facility for Life Sciences Research in Microgravity*, ESA SP-1091. Kluwer, Noordwijk, Netherlands, 1988, pp37-44.
19. Klaus D, Simske S, Todd P, Stodieck L. Investigation of space flight effects on *Escherichia coli* and a proposed model of underlying physical mechanisms. *Microbiology* 1997;143:449-455.
20. Kacena MA, Merrell GA, Manfredi B, Smith EE, Klaus DM, Todd P. Bacterial growth in space flight: logistic growth curve parameters for *Escherichia coli* and *Bacillus subtilis*. *Appl Microbiol Biotechnol* 1999;51:229-234.
21. Wilson JW, Ott CM, Ramamurthy R, Porwollick S, McClelland M, Pierson DL, Nickerson CA. Low-shear modeled microgravity alters the *Salmonella enterica* serovar Typhimurium stress response in a RpoS-independent manner. *Appl Environ Microbiol* 2002;68:5408-5416.
22. Fang A, Pierson D, Mishra S, Koenig D, Demain A. Effect of simulated microgravity and shear stress on microcin B7 production by *Escherichia coli* and on its excretion into the medium. *Appl Environ Microbiol* 1997;63:4090-4092.

23. Guadarrama S, Pulcini ED, Broadaway SC, Pyle BH. *Pseudomonas aeruginosa* growth and production of exotoxin A in static and modified microgravity environments. *Gravit Space Biol* 2005;18:85-86.
24. Nickerson CA, Ott CM, Wilson JW, Ramamurthy R, Pierson DL. Microbial responses to microgravity and other low-shear environments. *Microbiol Molec Biol Rev* 2004;68:345-361.
25. Pelz A, Wieland K-P, Putzbach K, Hentschel P, Albert K, Götz F. Structure and biosynthesis of staphyloxanthin from *Staphylococcus aureus*. *J Biol Chem* 2005;280:32493-32498.
26. Lui GY, Essex A, Buchanan JT, Datta V, Hoffman HM, Bastian JF, Fierer J, Nizet V. *Staphylococcus aureus* golden pigment impairs neutrophil killing and promotes virulence through its antioxidant activity. *J Exp Med* 2005;202:209-215.
27. Bohach GA. *Staphylococcus aureus* exotoxins. In: Fischetti VA, Novick RP, Ferretti JJ, Portnoy DA, Rood JI (Eds.), *Gram-positive pathogens*. ASM Press, Washington D C, 2006, pp464-477.
28. Marks J, Vaughan ACT. Staphylococcal δ -haemolysin. *J Path Bact* 1950;62:597-615.
29. Taylor PW, Sommer AP. Towards rational treatment of bacterial infections during extended space travel. *Int J Antimicrob Agents* 2005;26:183-187.