

Settlement Patterns in Roman Galicia: Late Iron Age – Second Century AD

Jonathan Wynne Rees

Volume II Appendices

Thesis submitted in requirement of fulfilments for the degree of Ph.D. in
Archaeology, at the Institute of Archaeology, University College London
University of London
2012

Introduction

Volume II presents the Maps and datasets which are used in the body of work (Volume I). In total there are 40 maps which can be broken down as follows:

- Maps 1-5 present the Iron Age settlements of each study area.
- Maps 6-10 illustrate the Land Use Capacity for the five study areas.
- Maps 11-20 demonstrate Thiessen polygons and multiscalar Thiessen polygons applied to Iron Age settlements from each of the five study areas.
- Maps 21-25 present the Roman settlements of the five study areas.
- Maps 26-30 show multiscalar Thiessen polygons applied to Roman settlements of the five study areas.
- Maps 31-35 illustrate the Land Use Capacity during the Roman period for all five study areas.
- Maps 36-40 show the least-cost paths during the Roman period for the five study areas.

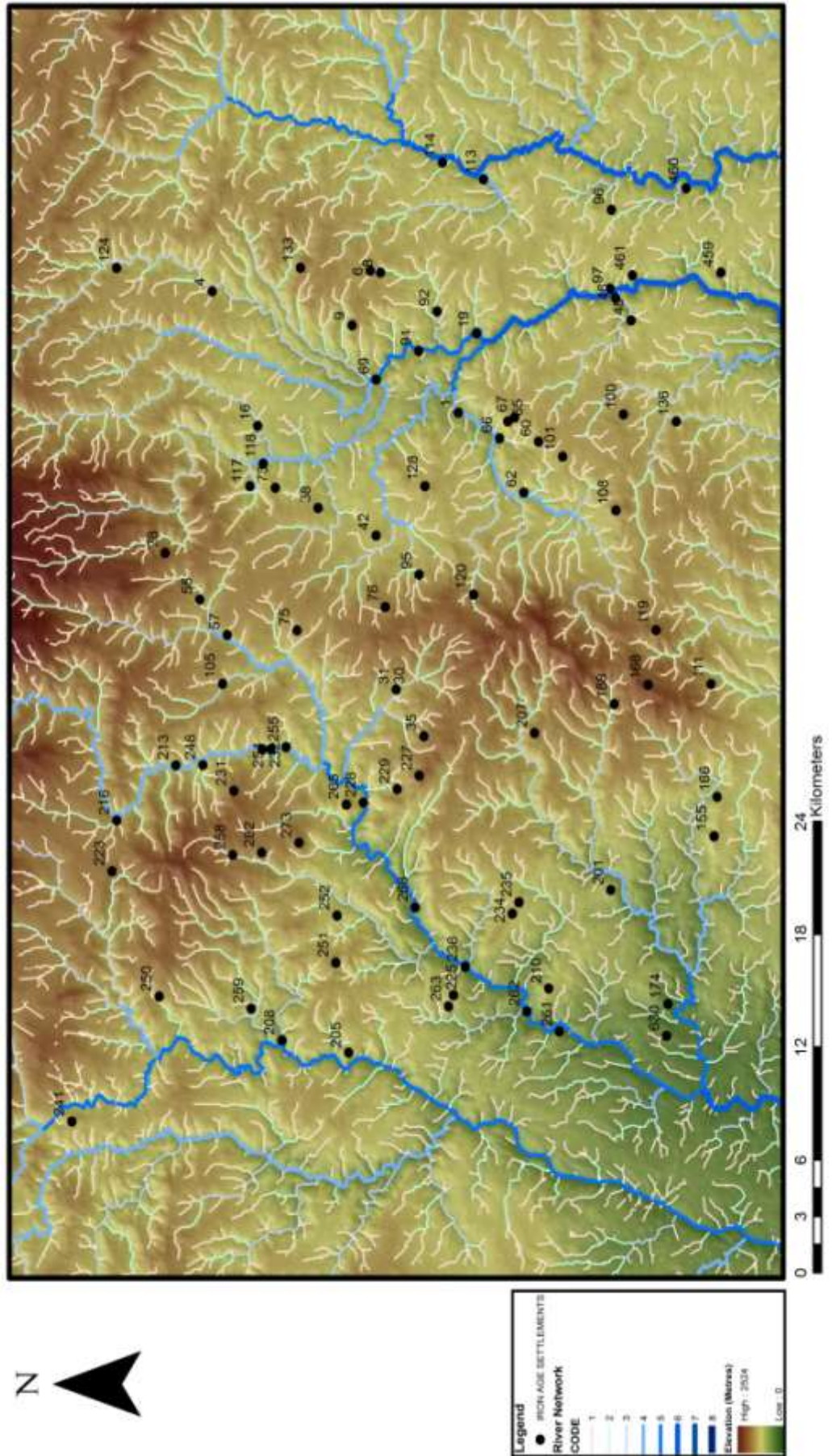
Appendices A and B are contained in a CD-ROM located at the back of Volume II. Appendix A lists the coordinates, settlement type, settlement height and gradient, settlement name and references for each site, for the five study areas. Appendix B, presents the nearest river type to settlement, the distance from each settlement to the rivers, and the distance from each settlement to the main Roman road for each of the five study areas. Additionally, the maps included in Volume II can also be viewed in greater detail on the CD-ROM.

List of Maps

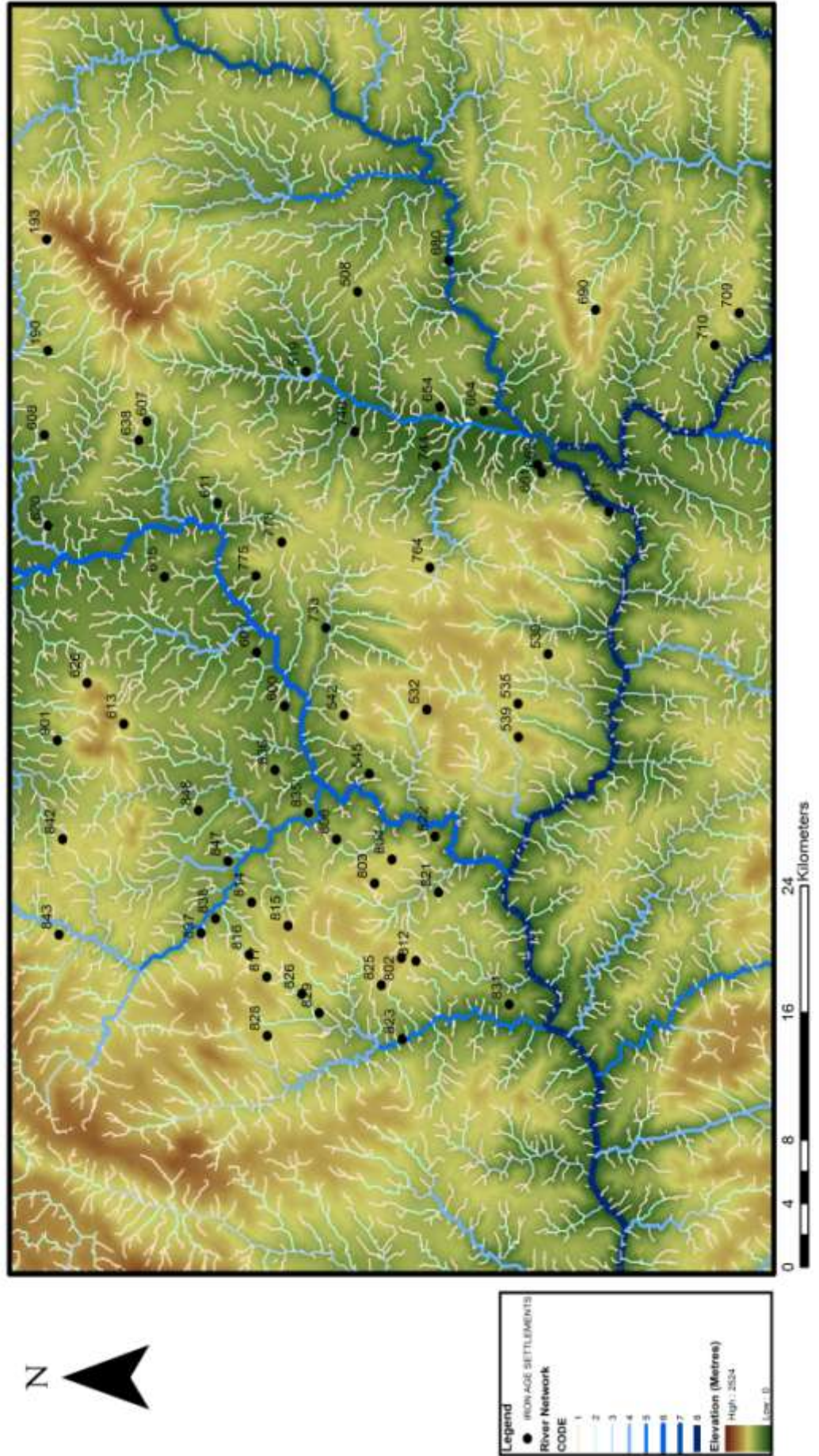
Map 1. Trás-os-Montes North. Iron Age Settlements.....	325
Map 2. Trás-os-Montes South. Iron Age Settlements.....	326
Map 3. Trás-os-Montes East. Iron Age Settlements.....	327
Map 4. Chaves. Iron Age Settlements.	328
Map 5. Viana. Iron Age Settlements.....	329
Map 6. Trás-os-Montes North. Land Use Capacity.....	330
Map 7. Trás-os-Montes South. Land Use Capacity.....	331
Map 8. Trás-os-Montes East. Land Use Capacity.	332
Map 9. Chaves. Land Use Capacity.....	333
Map 10. Viana. Land Use Capacity.	334
Map 11. Trás-os-Montes North. Thiessen Polygons and Iron Age Settlements.	335
Map 12. Trás-os-Montes North. Multiscalar Thiessen Polygons.	336
Map 13. Trás-os-Montes South. Thiessen Polygons and Iron Age Settlements.	337
Map 14. Trás-os-Montes South. Multiscalar Thiessen Polygons.....	338
Map 15. Trás-os-Montes East. Thiessen Polygons and Iron Age Settlements.	339
Map 16. Trás-os-Montes East. Multiscalar Thiessen Polygons.	340
Map 17. Chaves. Thiessen Polygons and Iron Age Settlements.....	341
Map 18. Chaves. Multiscalar Thiessen Polygons.....	342
Map 19. Viana. Thiessen Polygons and Iron Age Settlements.	343
Map 20. Viana. Multiscalar Thiessen Polygons.	344
Map 21. Trás-os-Montes North. Roman Settlements.....	345
Map 22. Trás-os-Montes South. Roman Settlements.....	346
Map 23. Trás-os-Montes East. Roman Settlements.....	347
Map 24. Chaves. Roman Settlements.	348
Map 25. Viana. Roman Settlements.....	349
Map 26. Trás-os-Montes North. Multiscalar Thiessen Polygons and Roman Settlements.	350
Map 27. Trás-os-Montes South. Multiscalar Thiessen Polygons and Roman Settlements..	351
Map 28. Trás-os-Montes East. Multiscalar Thiessen Polygons and Roman Settlements. ...	352
Map 29. Chaves. Multiscalar Thiessen Polygons and Roman Settlements.	353
Map 30. Viana. Multiscalar Thiessen Polygons and Roman Settlements.	354
Map 31. Roman Trás-os-Montes North. Land Use Capacity.	355

Map 32. Roman Trás-os-Montes South. Land Use Capacity.	356
Map 33. Roman Trás-os-Montes East. Land Use Capacity.	357
Map 34. Roman Chaves. Land Use Capacity.	358
Map 35. Roman Viana. Land Use Capacity.	359
Map 36. Trás-os-Montes North. Roman Roads and Least-Cost Paths.	360
Map 37. Trás-os-Montes South. Roman Roads and Least-Cost Paths.	361
Map 38. Trás-os-Montes East. Roman Roads and Least-Cost Paths.	362
Map 39. Chaves. Roman Roads and Least-Cost Paths.	363
Map 40. Viana. Roman Roads and Least-Cost Paths.	364

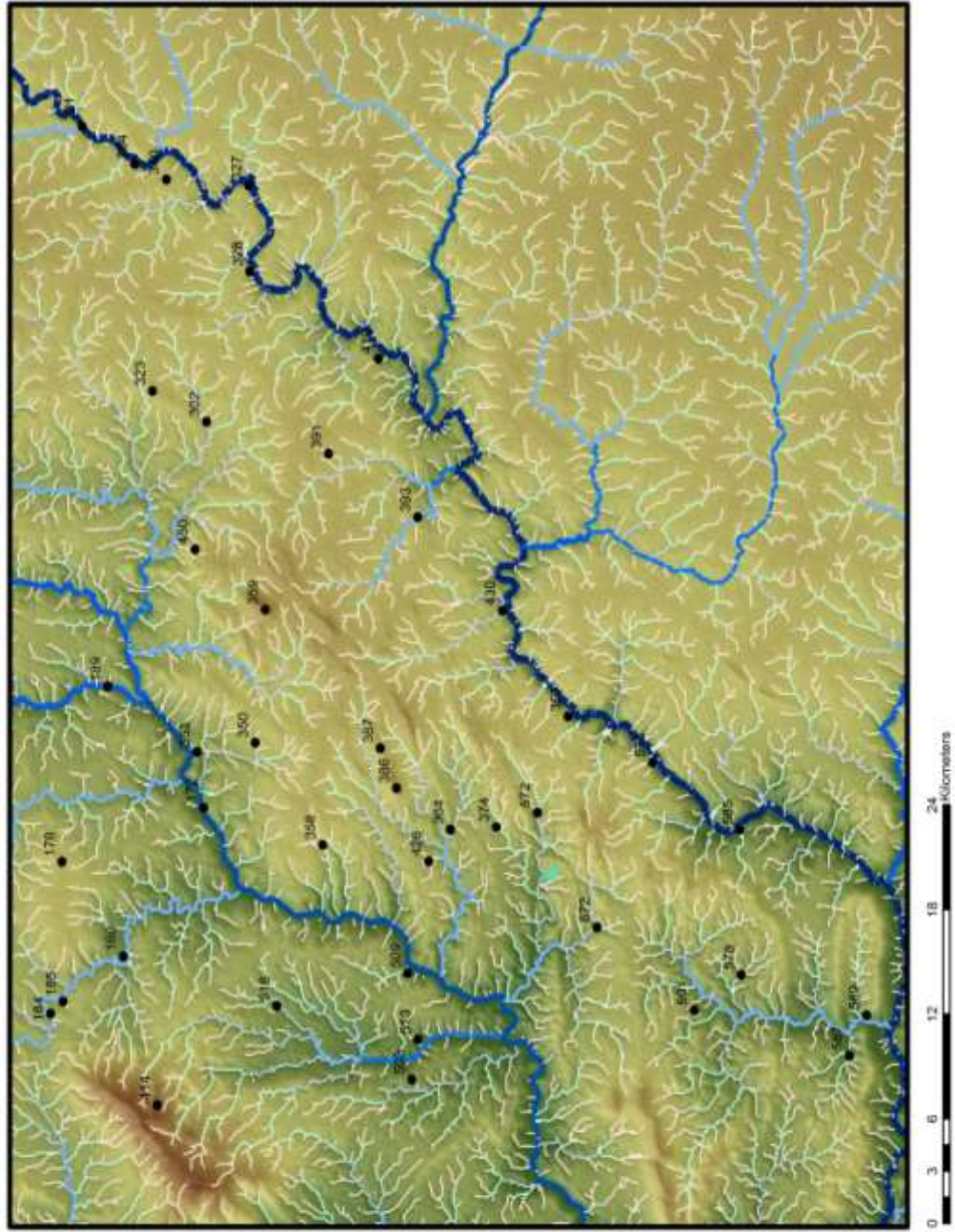
MAP 1. TRAS-OS-MONTES NORTH. IRON AGE SETTLEMENTS



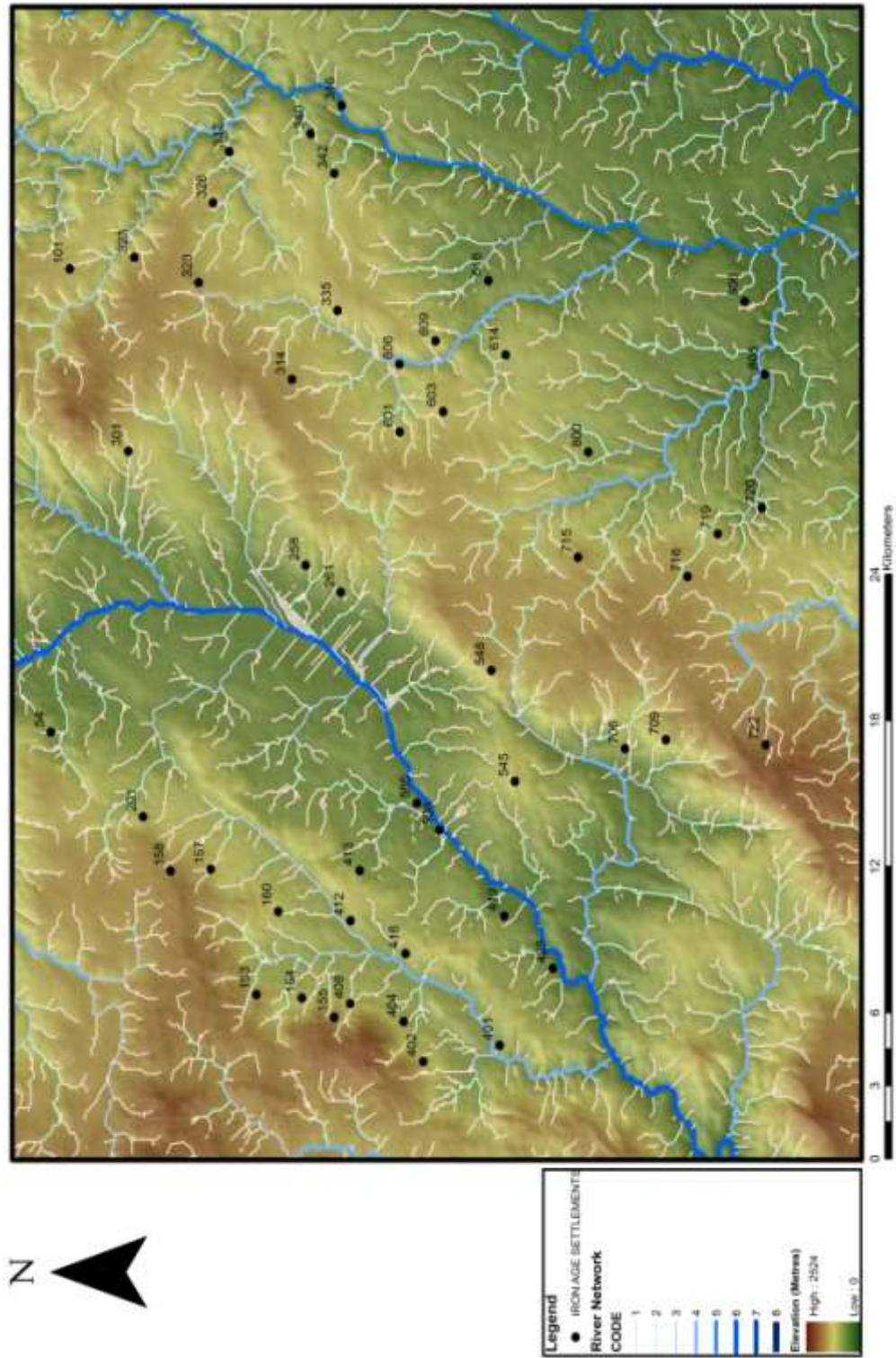
MAP 2. TRAS-OS-MONTES SOUTH. IRON AGE SETTLEMENTS



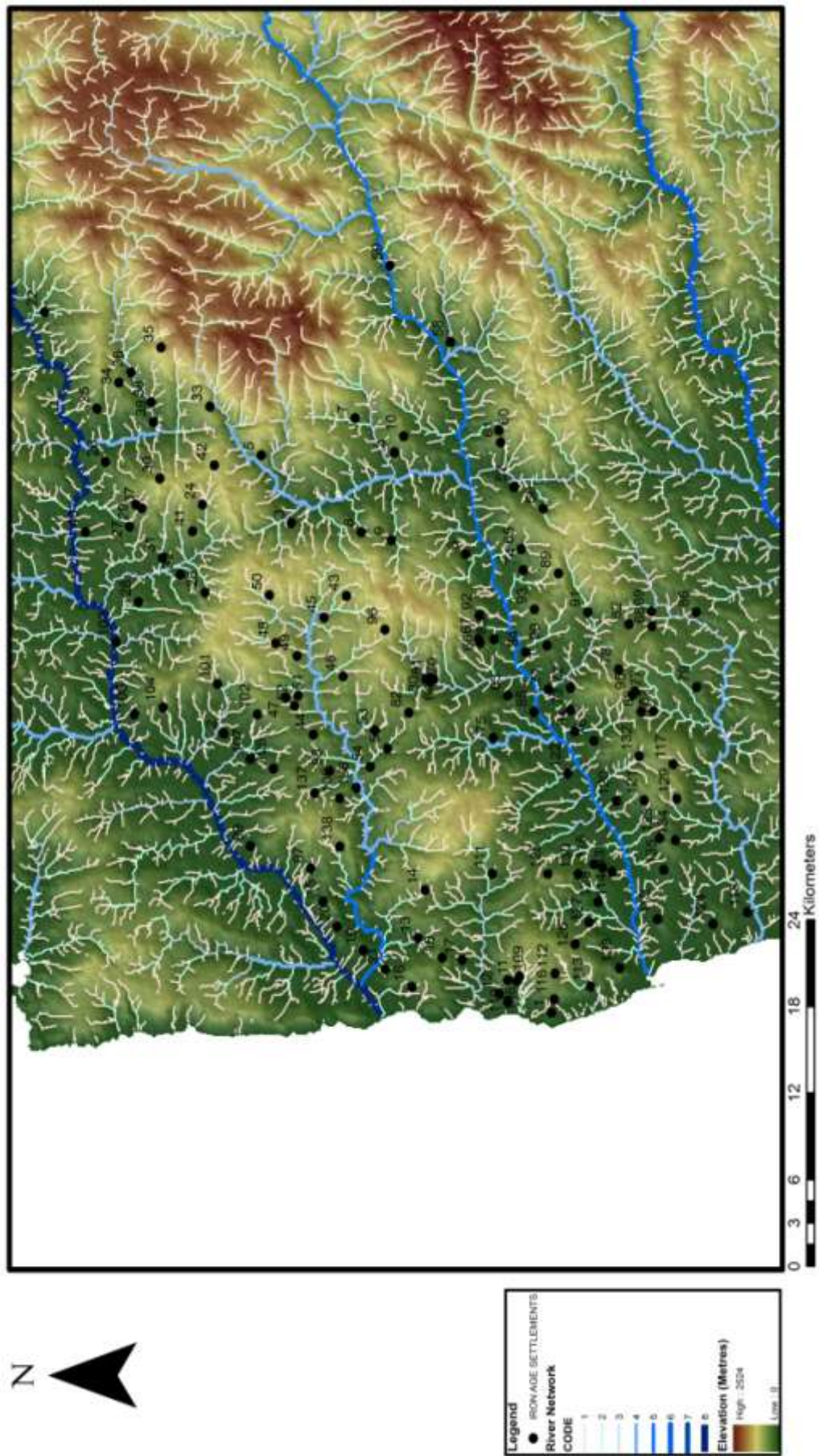
MAP 3. TRAS-OS-MONTES EAST. IRON AGE SETTLEMENTS



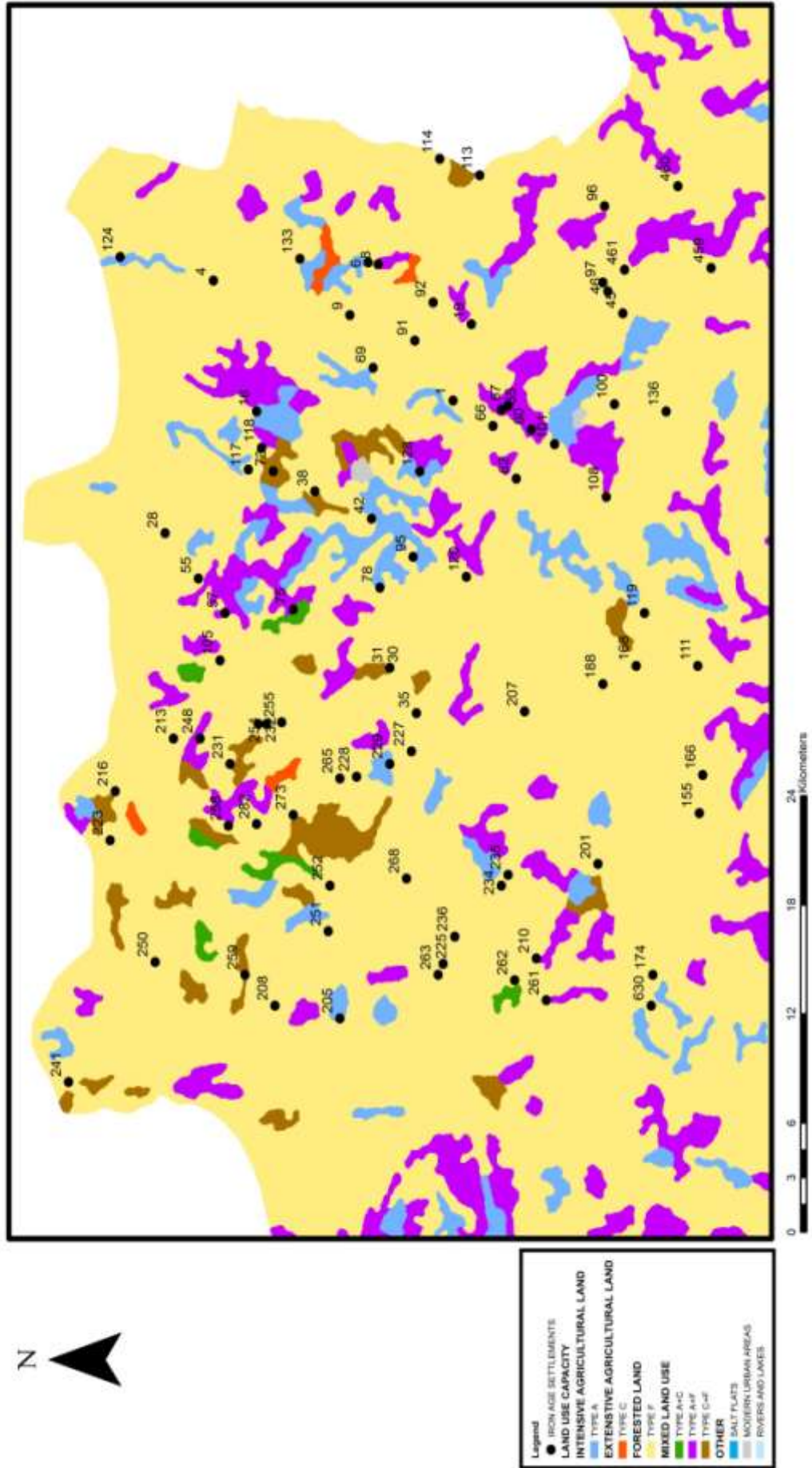
MAP 4. CHAVES. IRON AGE SETTLEMENTS



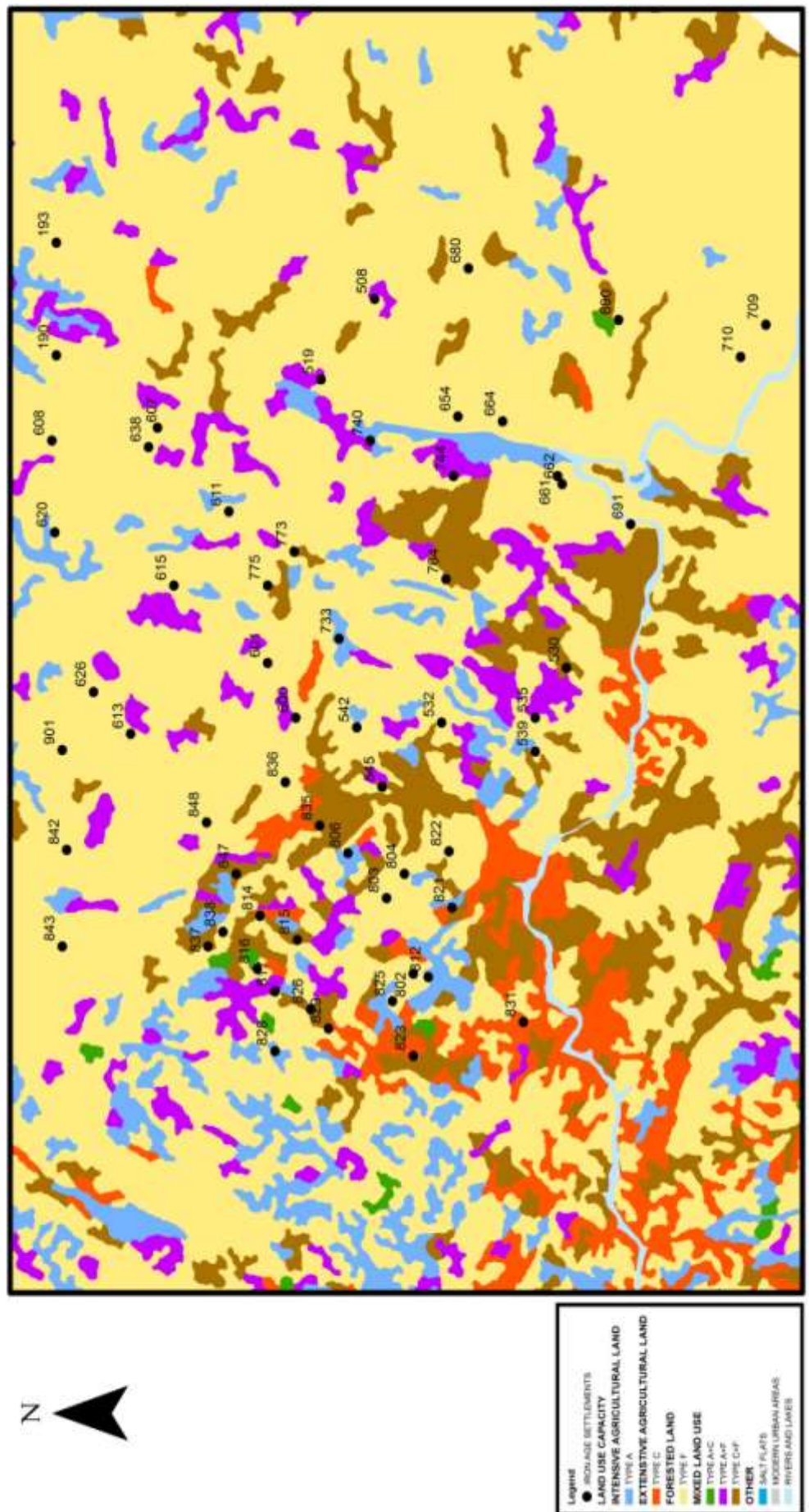
MAP 5. VIANA. IRON AGE SETTLEMENTS



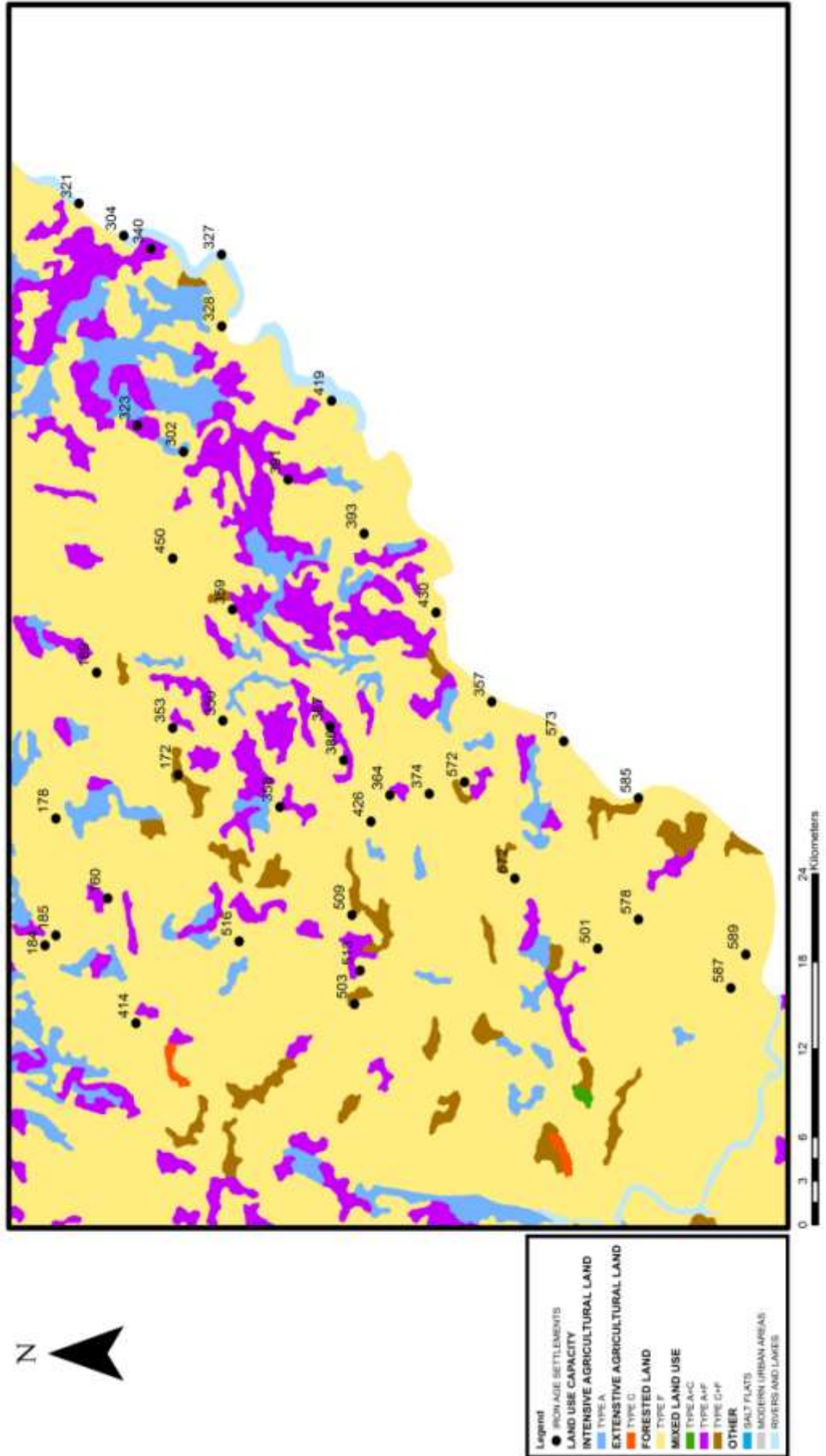
MAP 6. TRAS-OS-MONTES NORTH. LAND USE CAPACITY



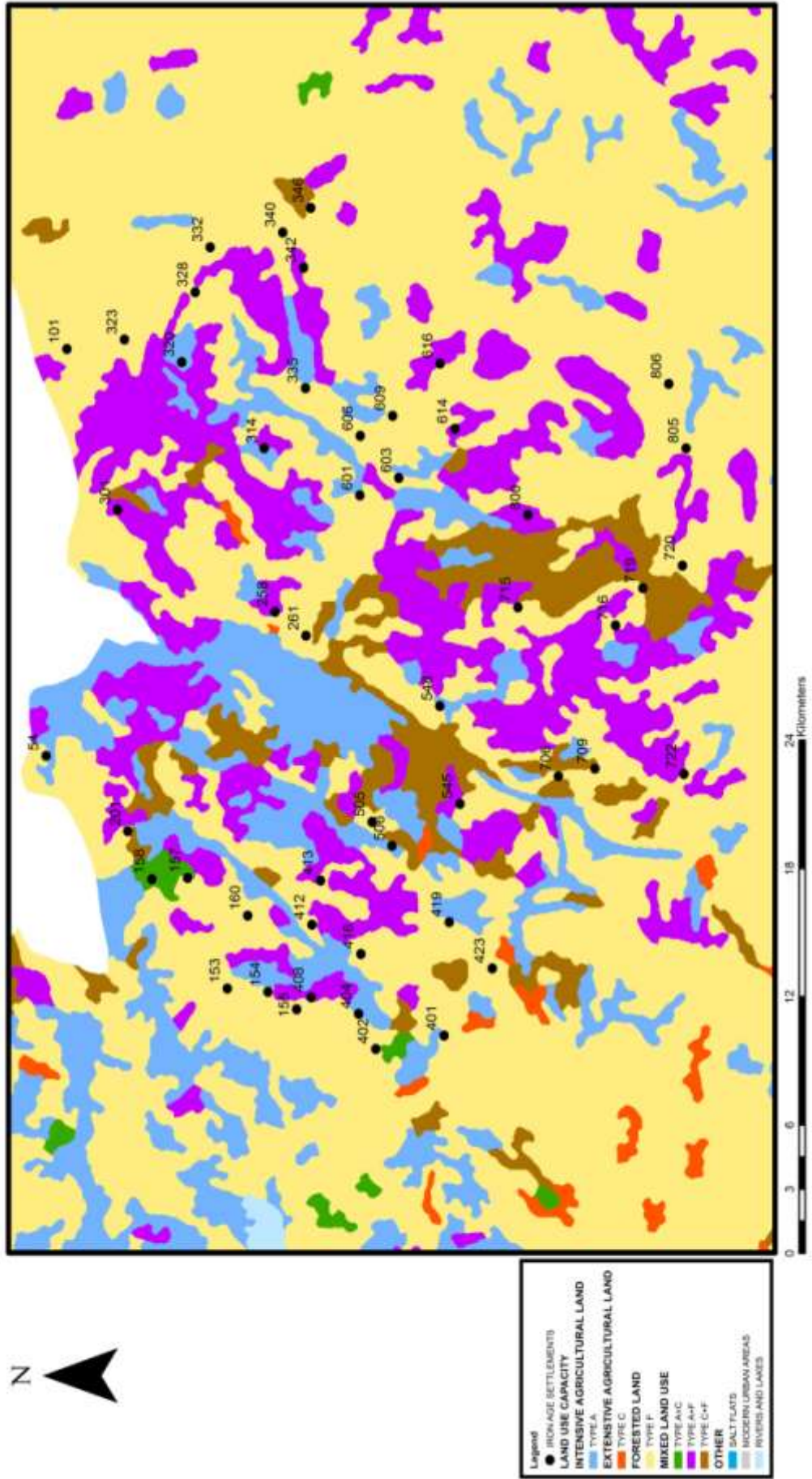
MAP 7. TRAS-OS-MONTES SOUTH. LAND USE CAPACITY



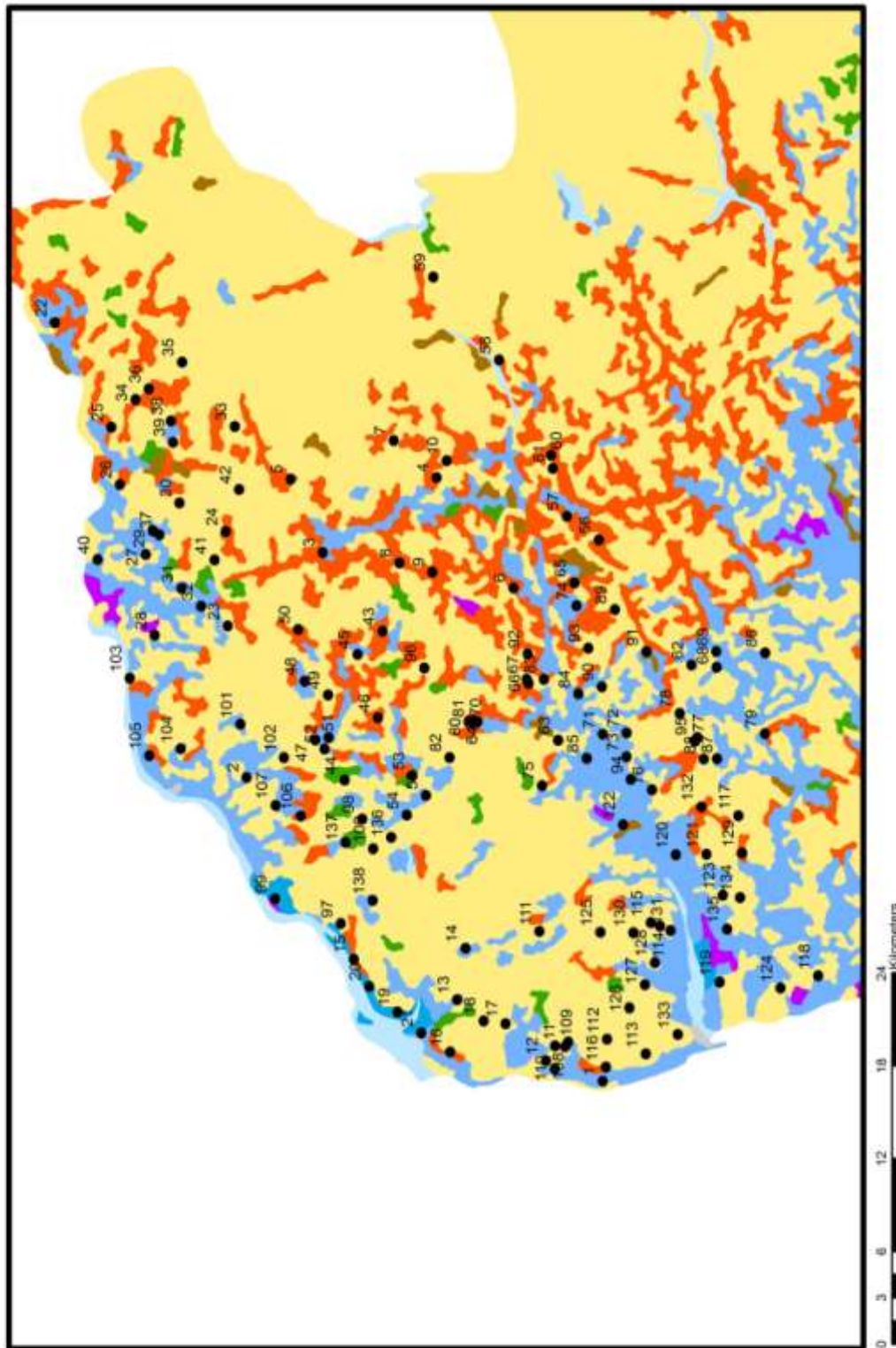
MAP 8. TRAS-OS-MONTES EAST. LAND USE CAPACITY



MAP 9. CHAVES. LAND USE CAPACITY



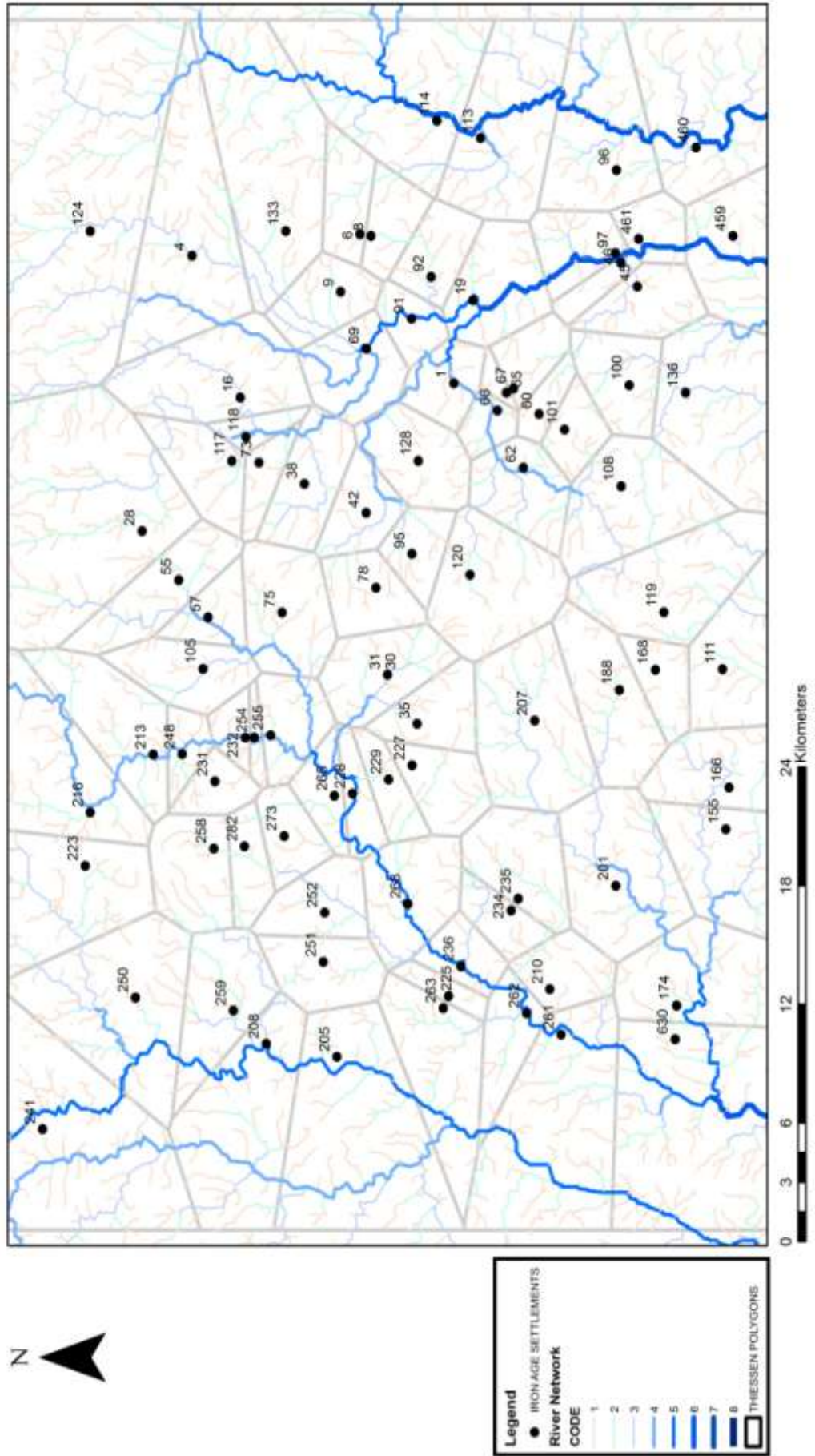
MAP 10. VIANA. LAND USE CAPACITY



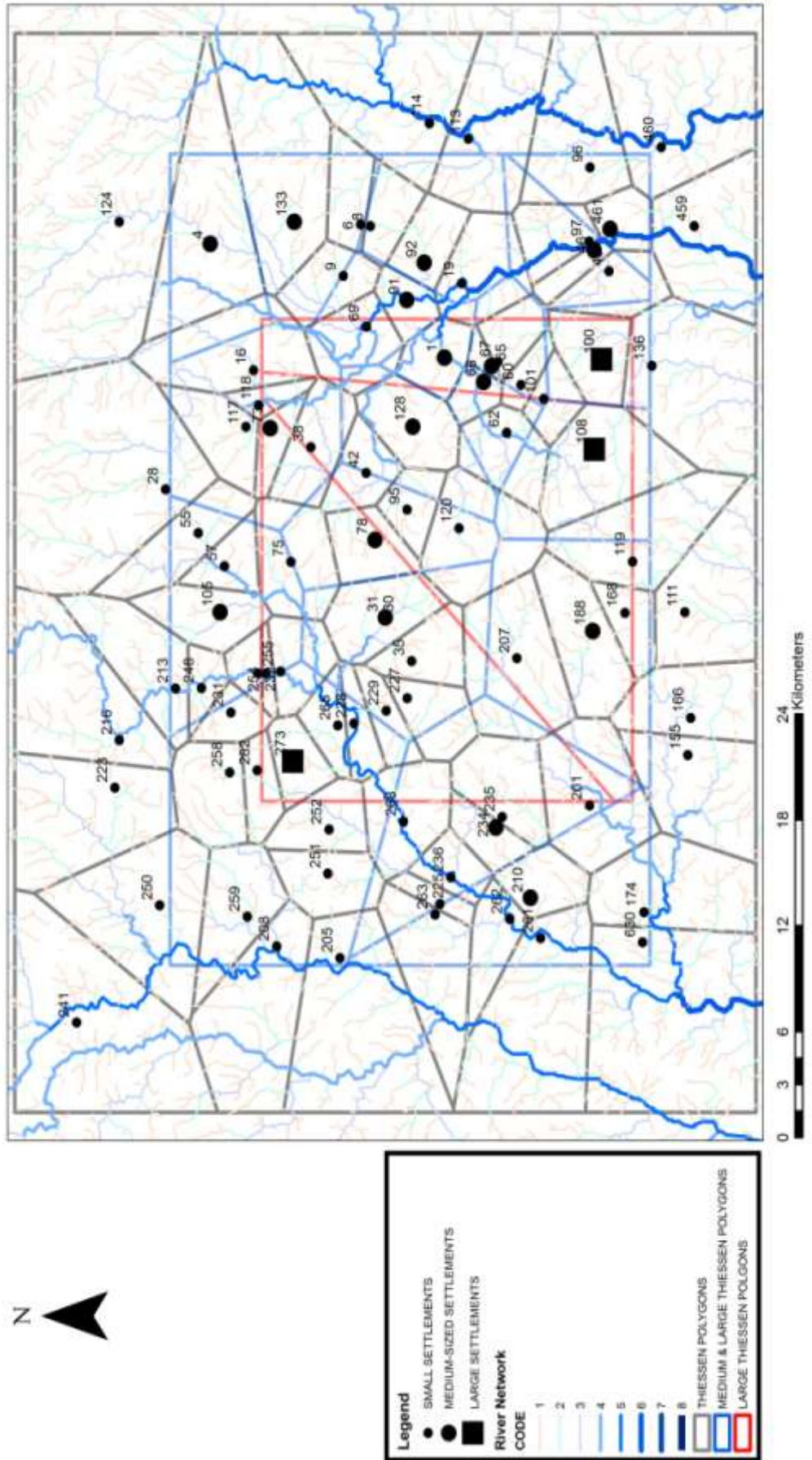
Legend

- IRON AGE SETTLEMENTS
- LAND USE CAPACITY
- INTENSIVE AGRICULTURAL LAND
- EXTENSIVE AGRICULTURAL LAND
- FORESTED LAND
- MIXED LAND USE
- OTHER
- MODERN URBAN AREAS
- RIVERS AND LAKES

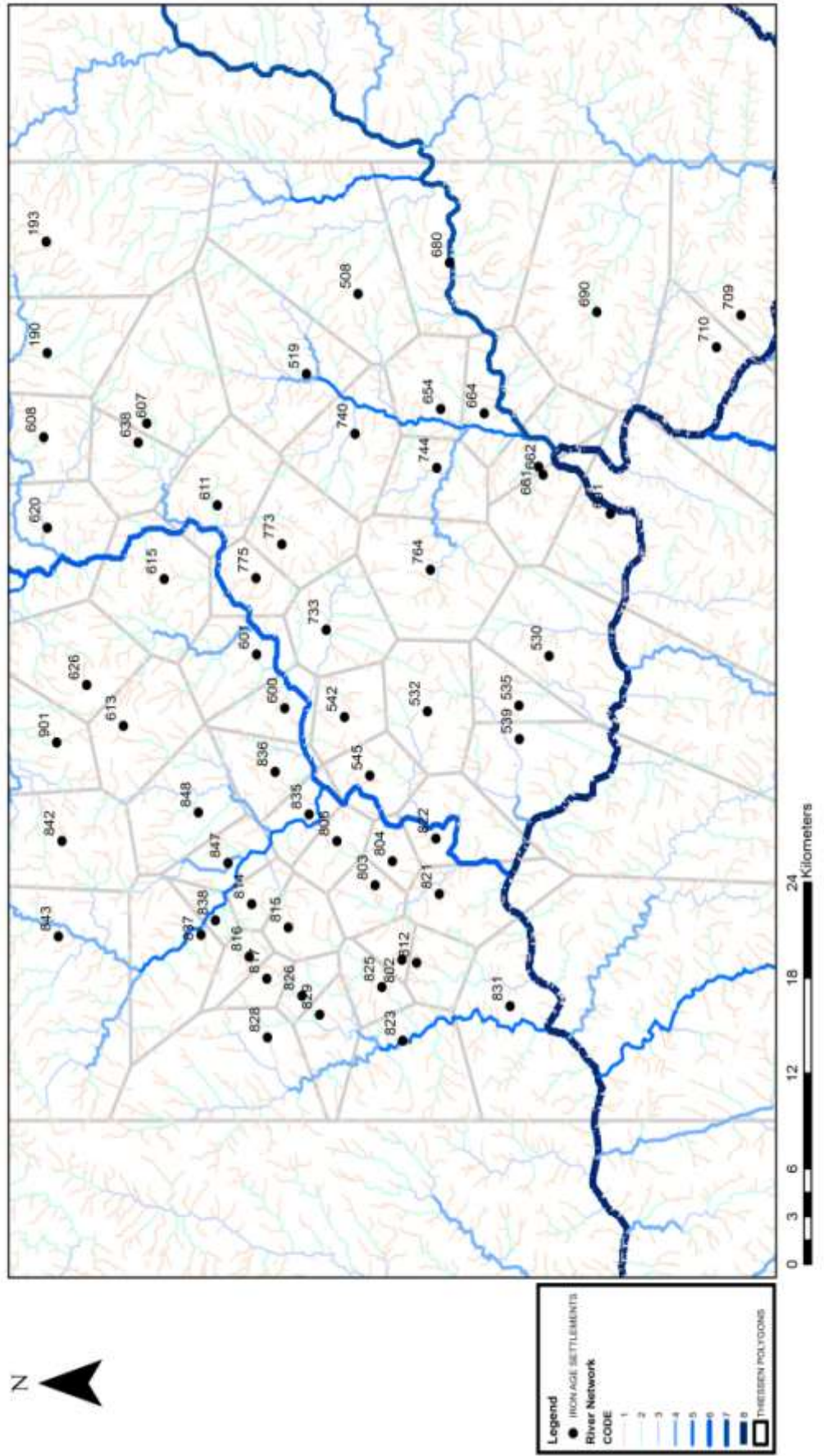
MAP 11. TRAS-OS-MONTES NORTH. THIESSEN POLYGONS AND IRON AGE SETTLEMENTS



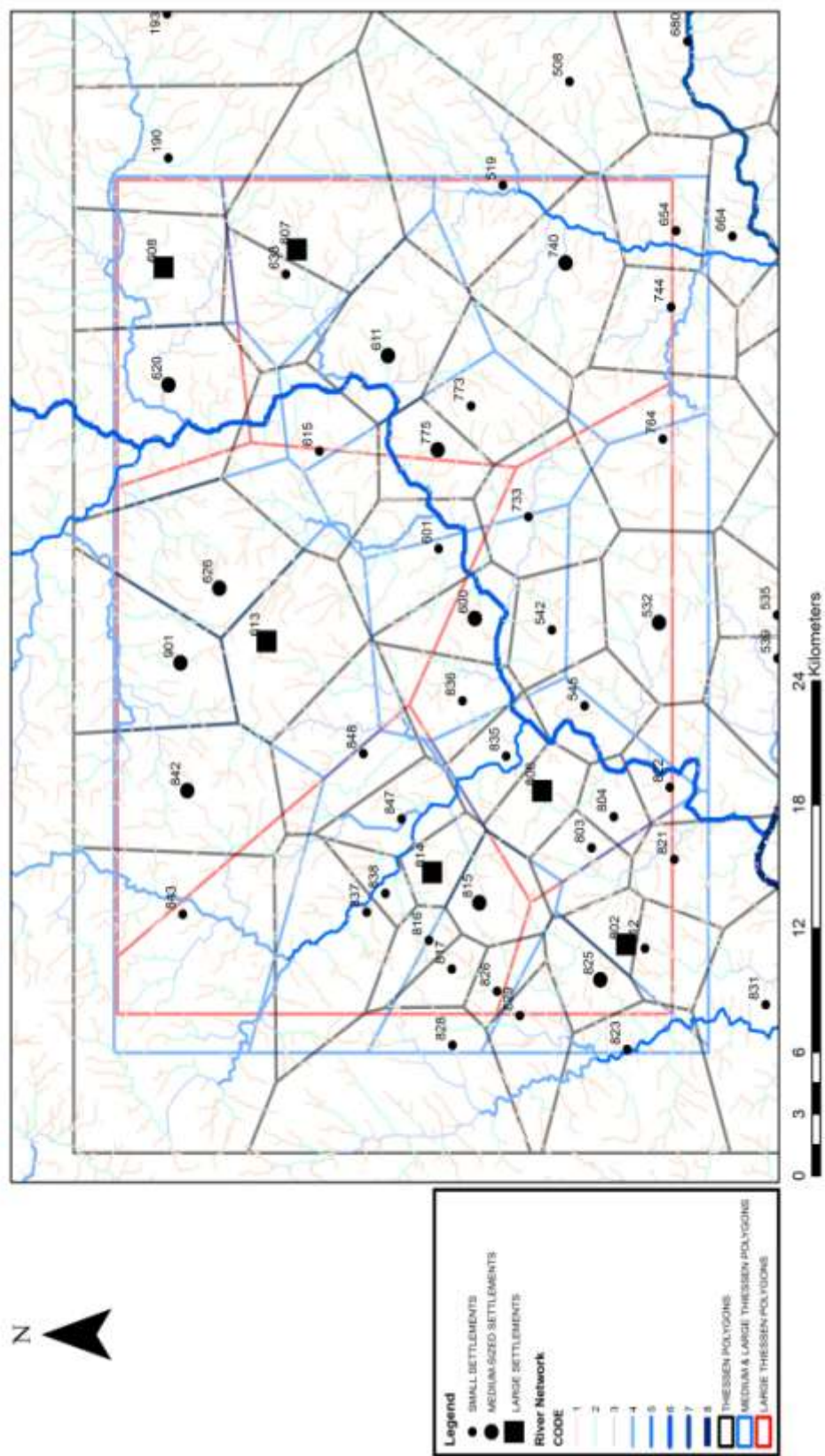
MAP 12. TRAS-OS-MONTES NORTH. MULTISCALAR THIESEN POLYGONS



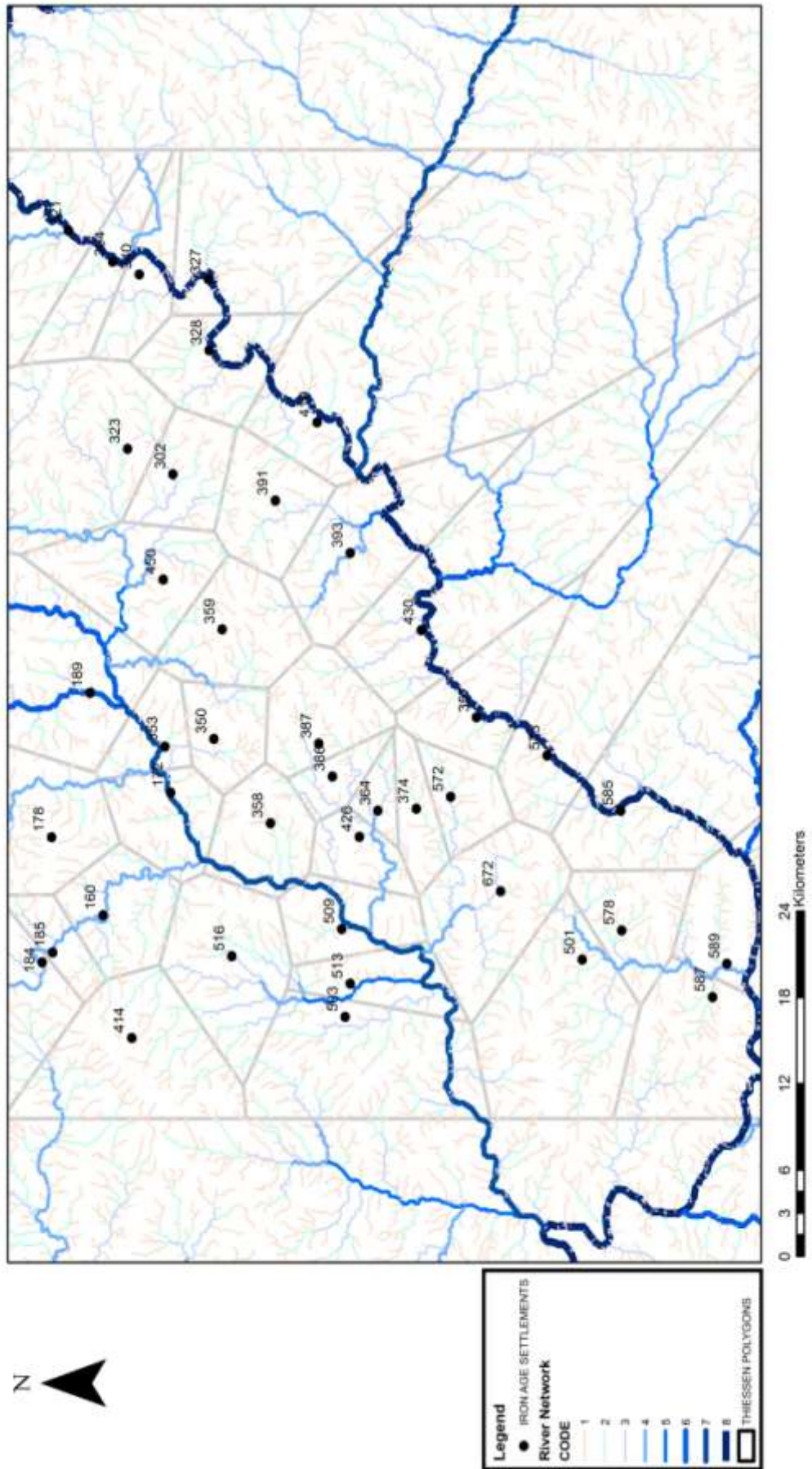
MAP 13. TRAS-OS-MONTES SOUTH. THIESSEN POLYGONS AND IRON AGE SETTLEMENTS



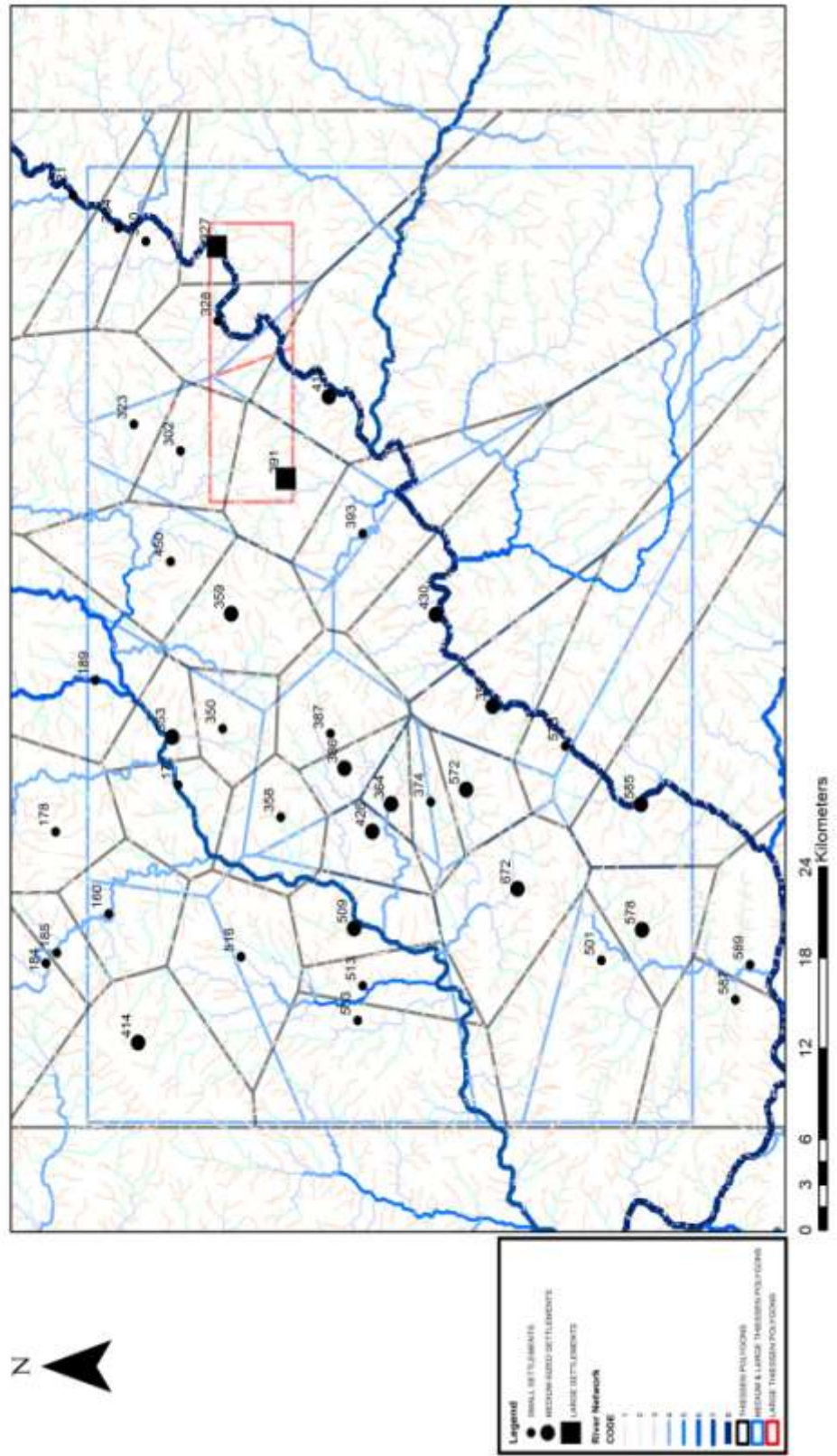
MAP 14. TRAS-OS-MONTES SOUTH. MULTISCALAR THIESSSEN POLYGONS



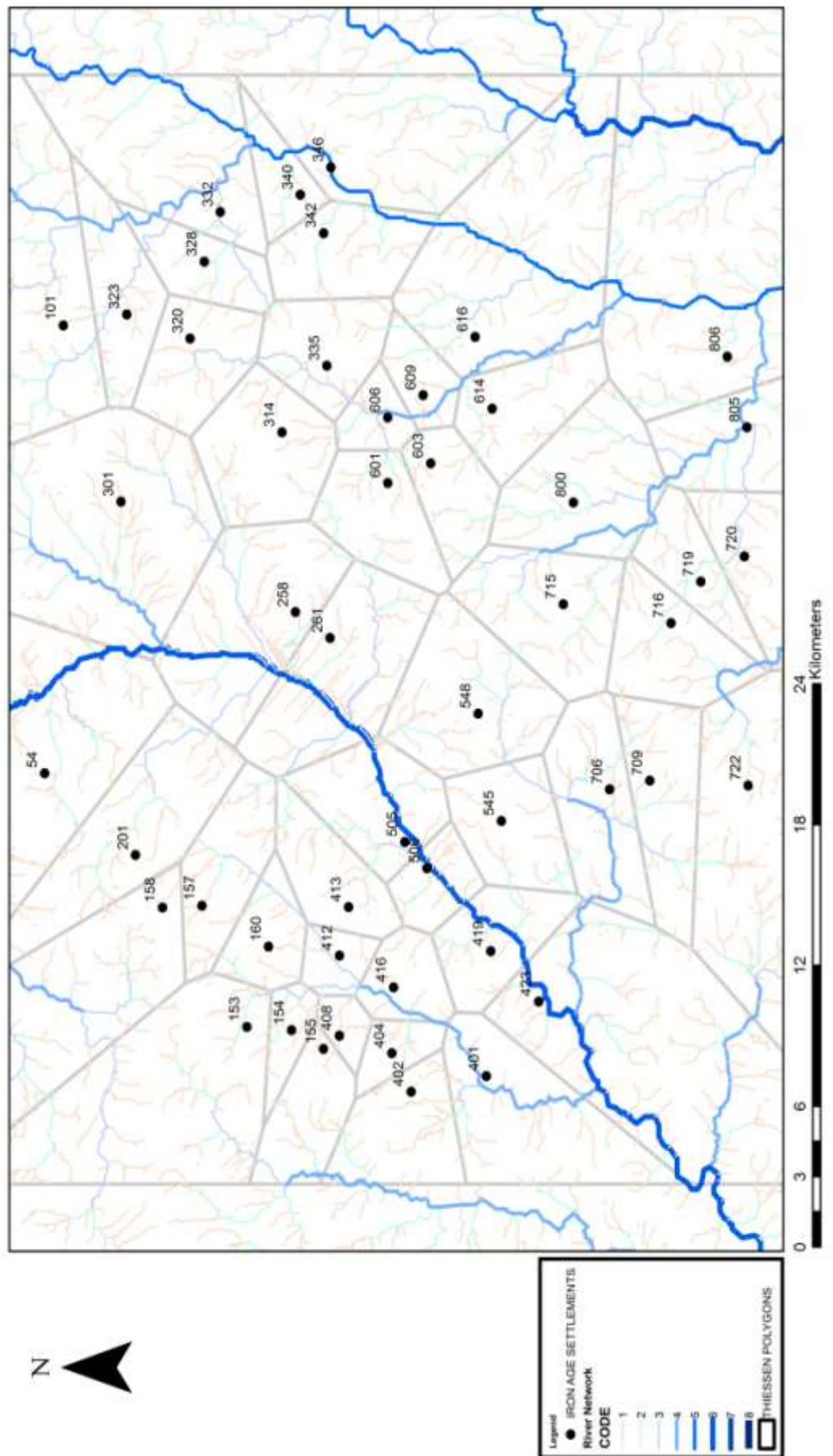
MAP 15. TRAS-OS-MONTES EAST. THIESSEN POLYGONS AND IRON AGE SETTLEMENTS



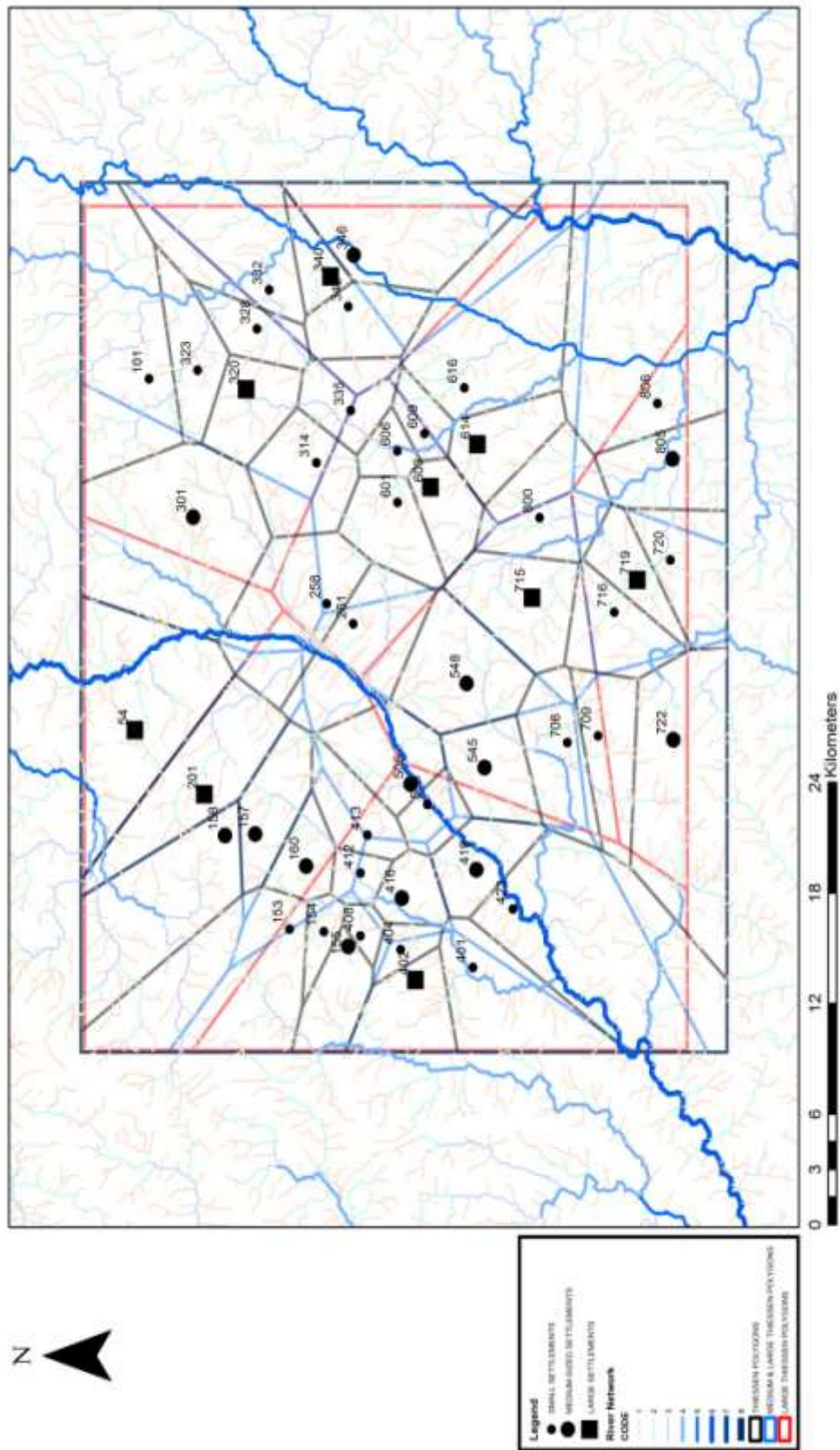
MAP 16. TRAS-OS-MONTES EAST. MULTISCALAR THIESSEN POLYGONS



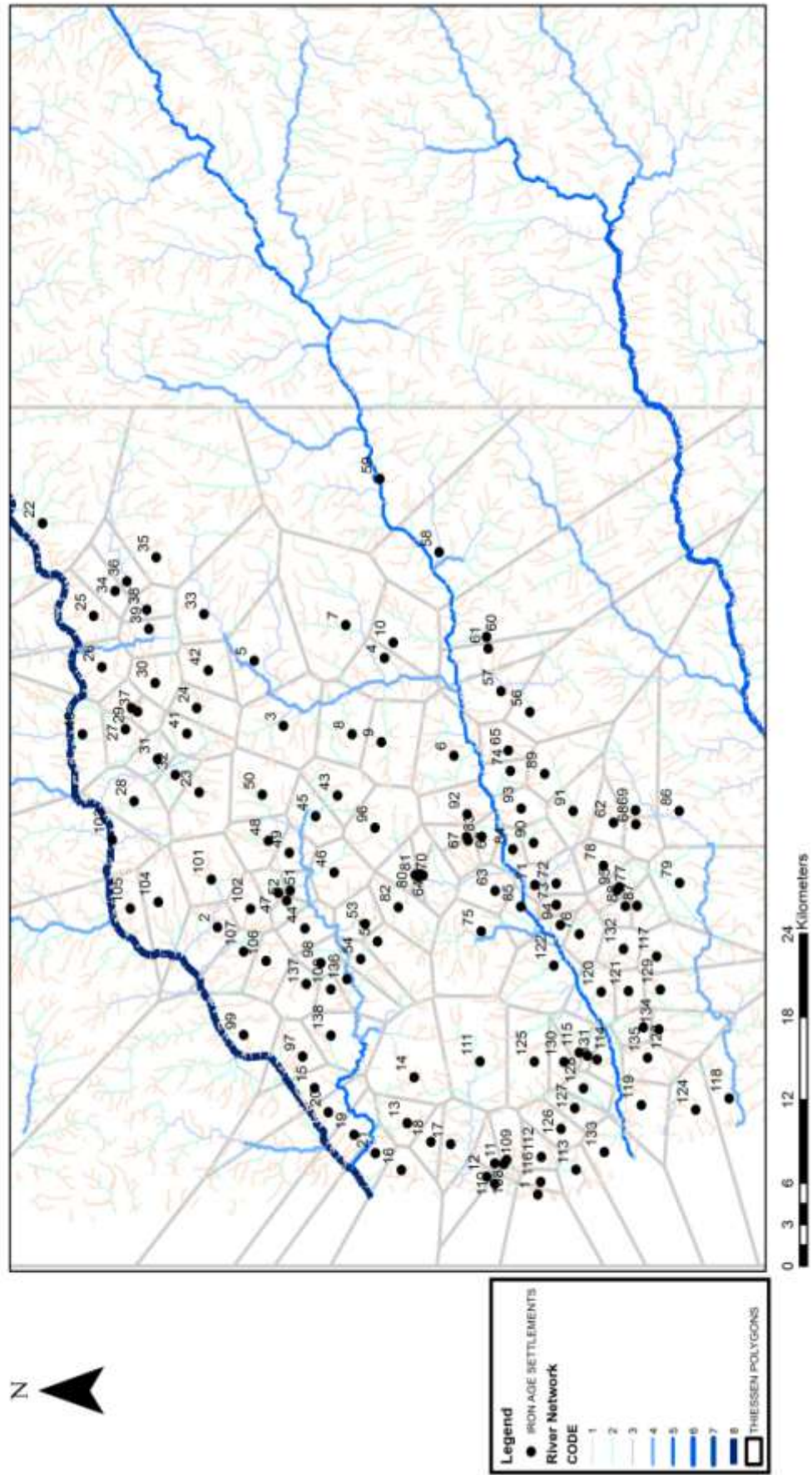
MAP 17. CHAVES. THIESSEN POLYGONS AND IRON AGE SETTLEMENTS



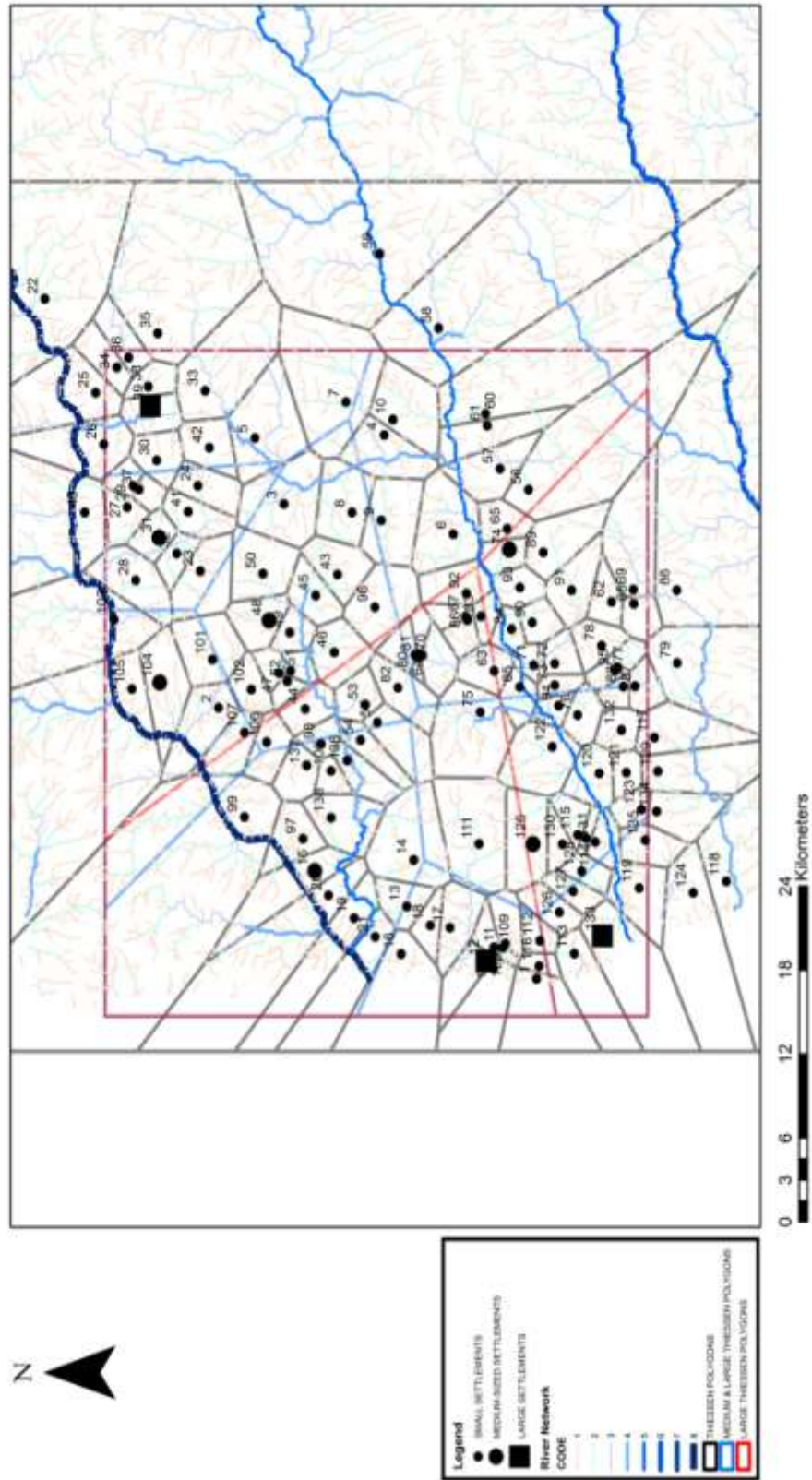
MAP 18. CHAVES. MULTISCALAR THIESSEN POLYGONS



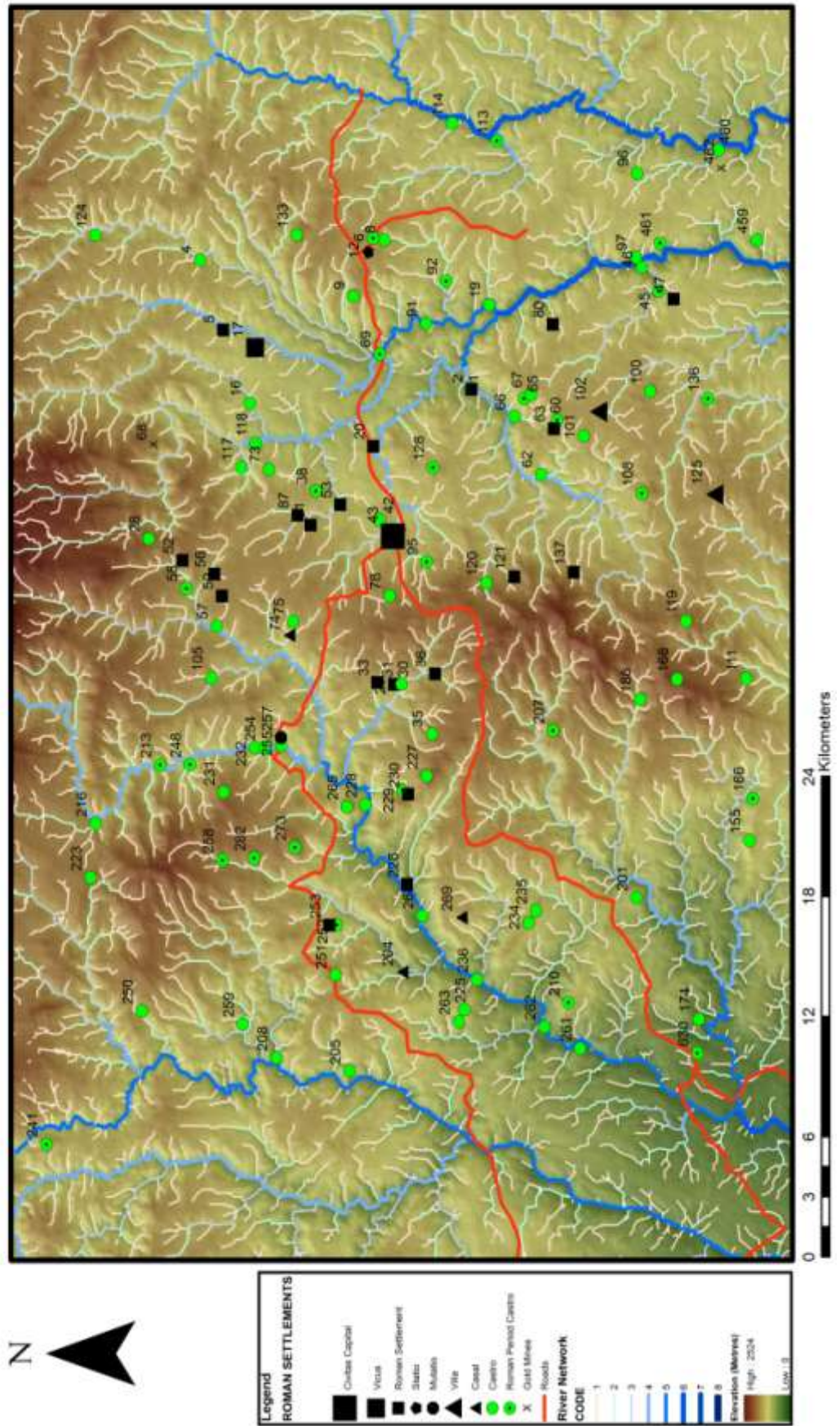
MAP 19. VIANA. THIESSEN POLYGONS AND IRON AGE SETTLEMENTS



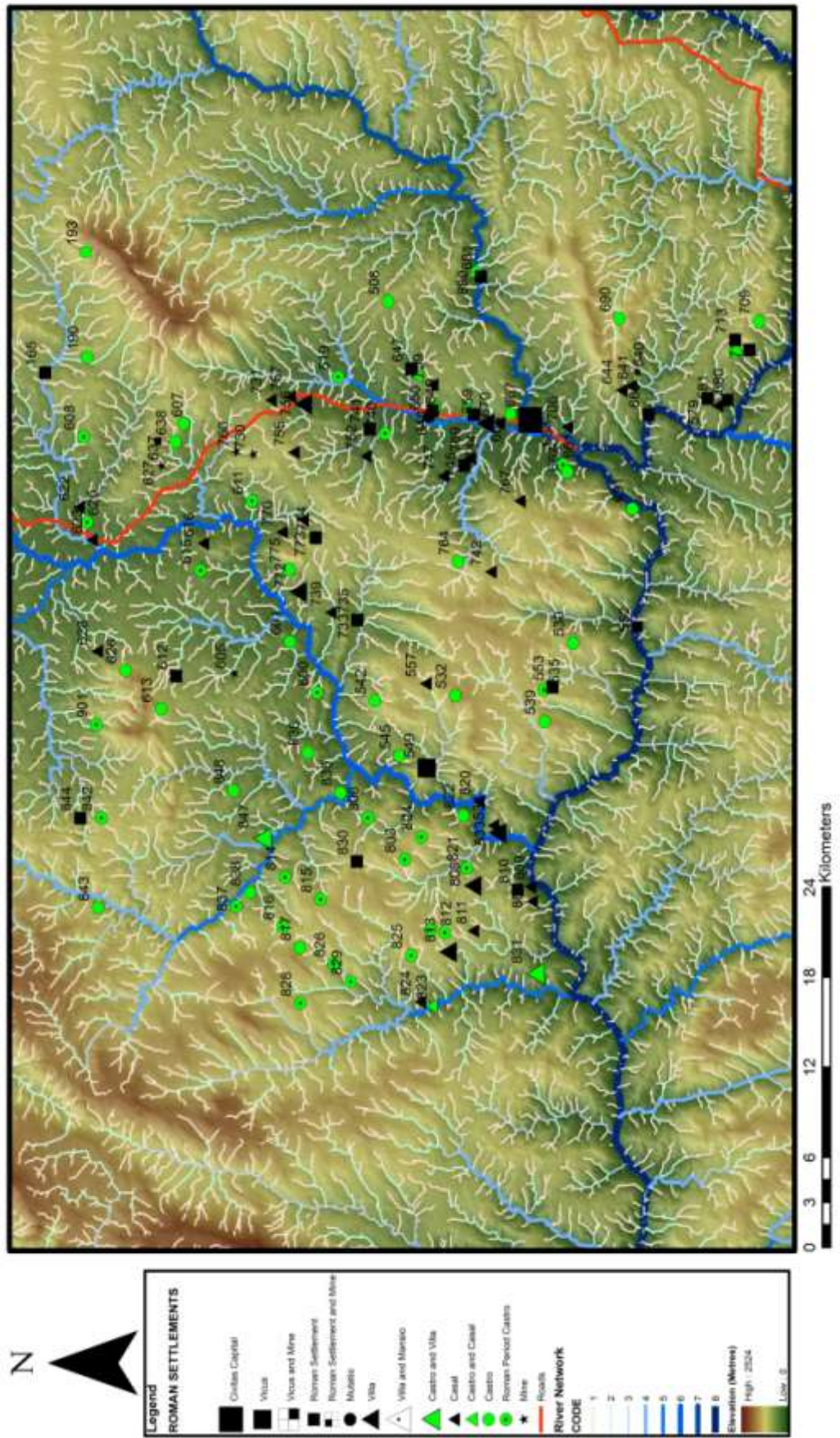
MAP 20. VIANA. MULTISCALAR THIESSSEN POLYGONS



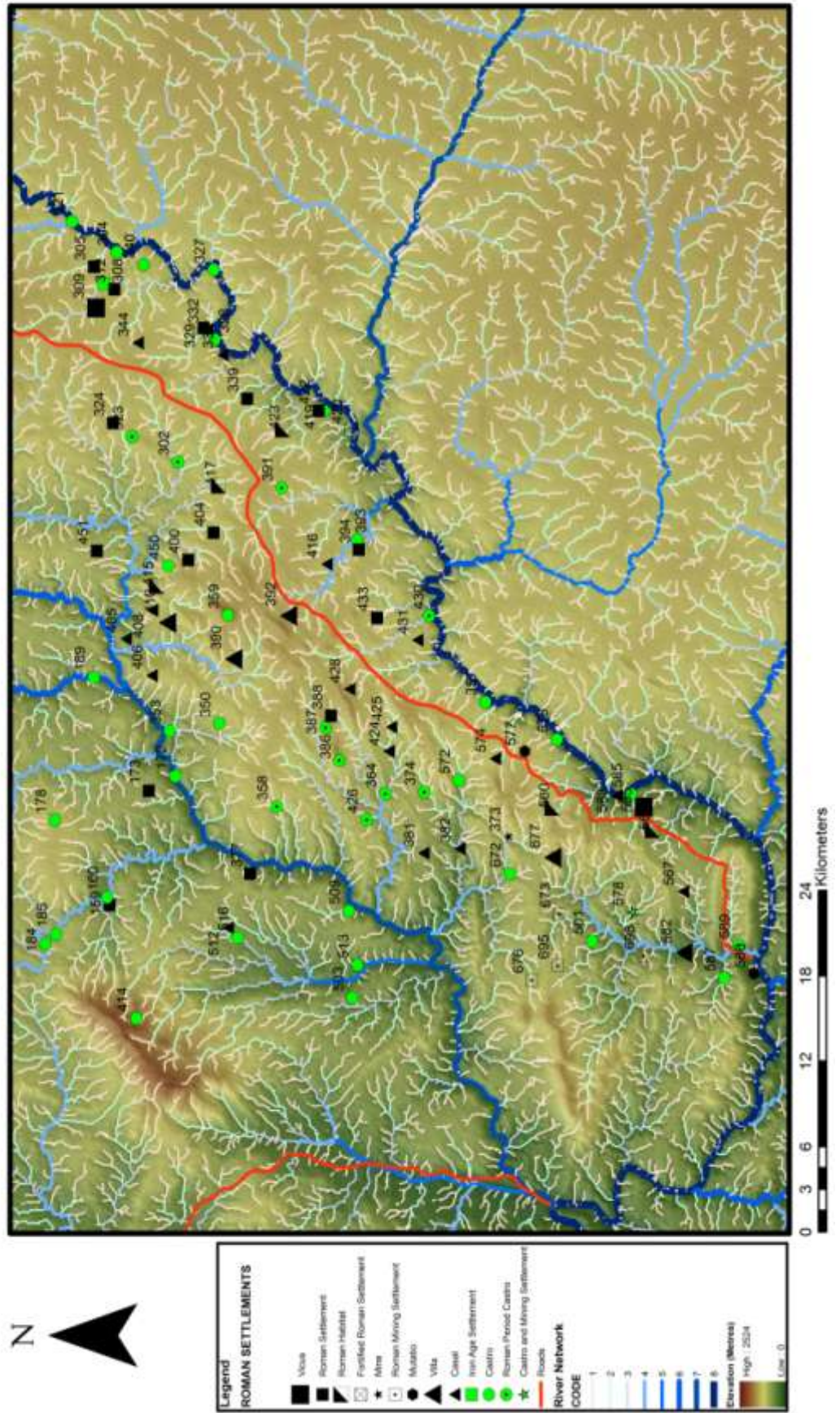
MAP 21. TRAS-OS-MONTES NORTH. ROMAN SETTLEMENTS



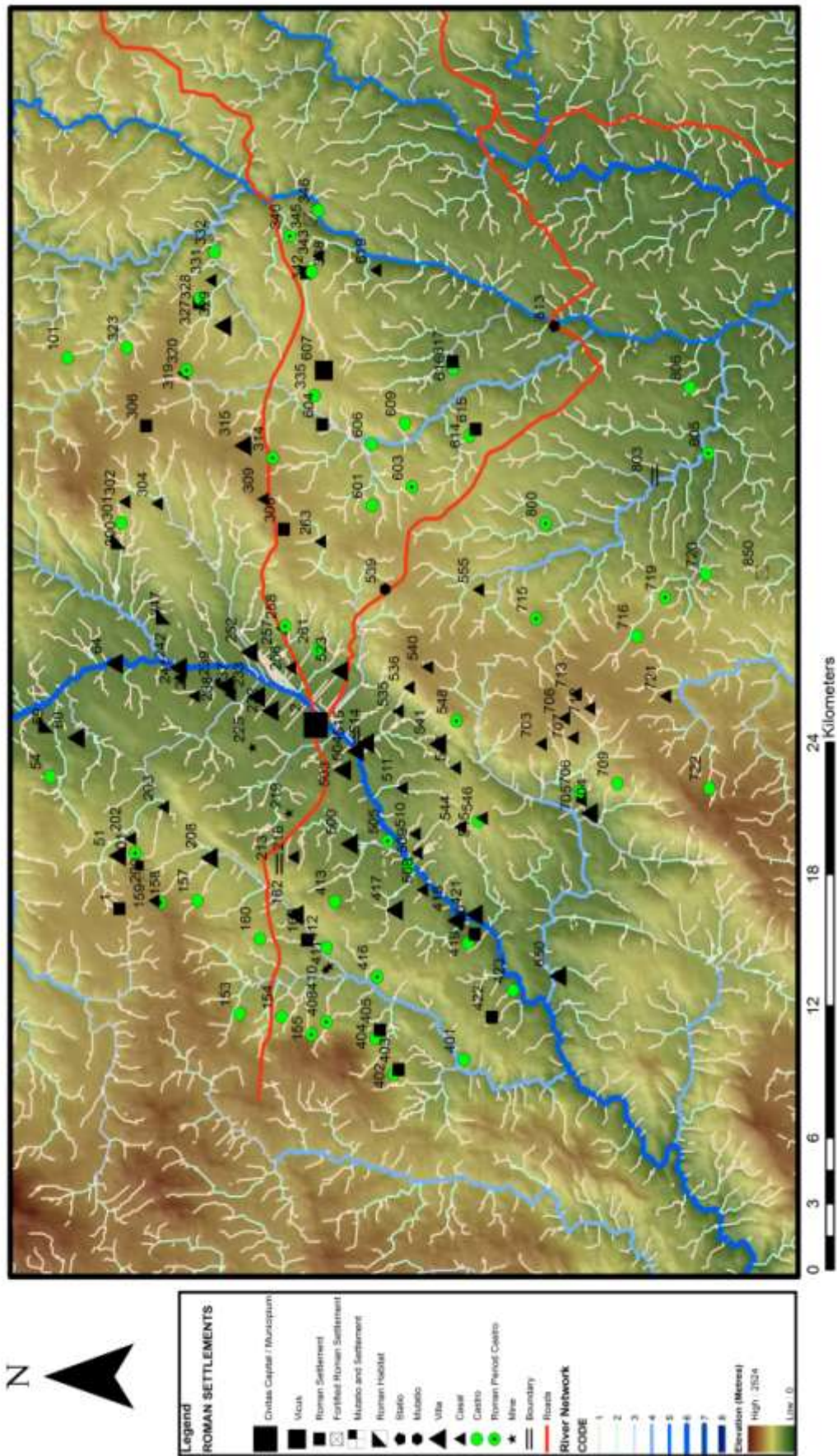
MAP 22. TRAS-OS-MONTES SOUTH. ROMAN SETTLEMENTS



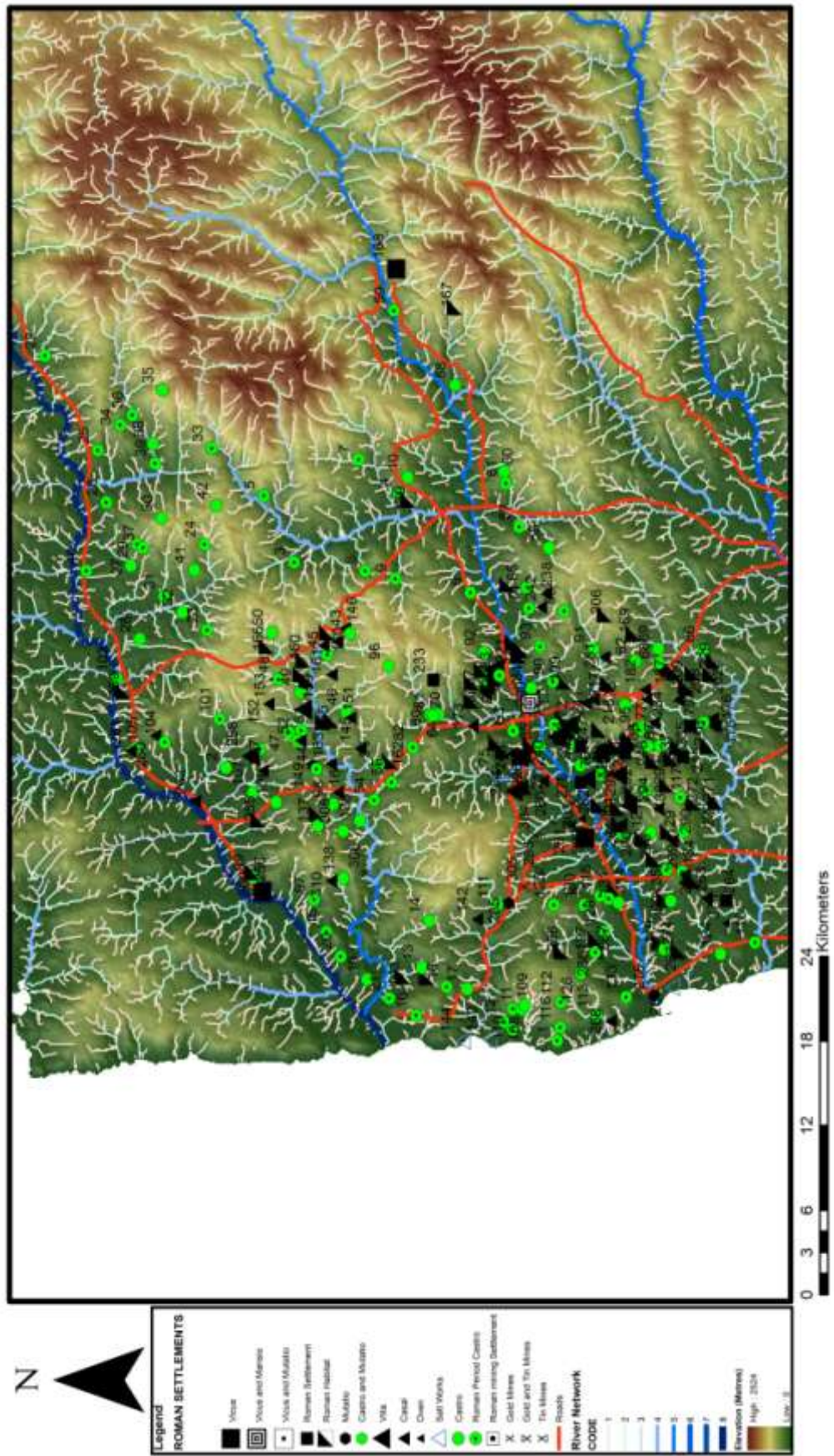
MAP 23. TRAS-OS-MONTES EAST. ROMAN SETTLEMENTS



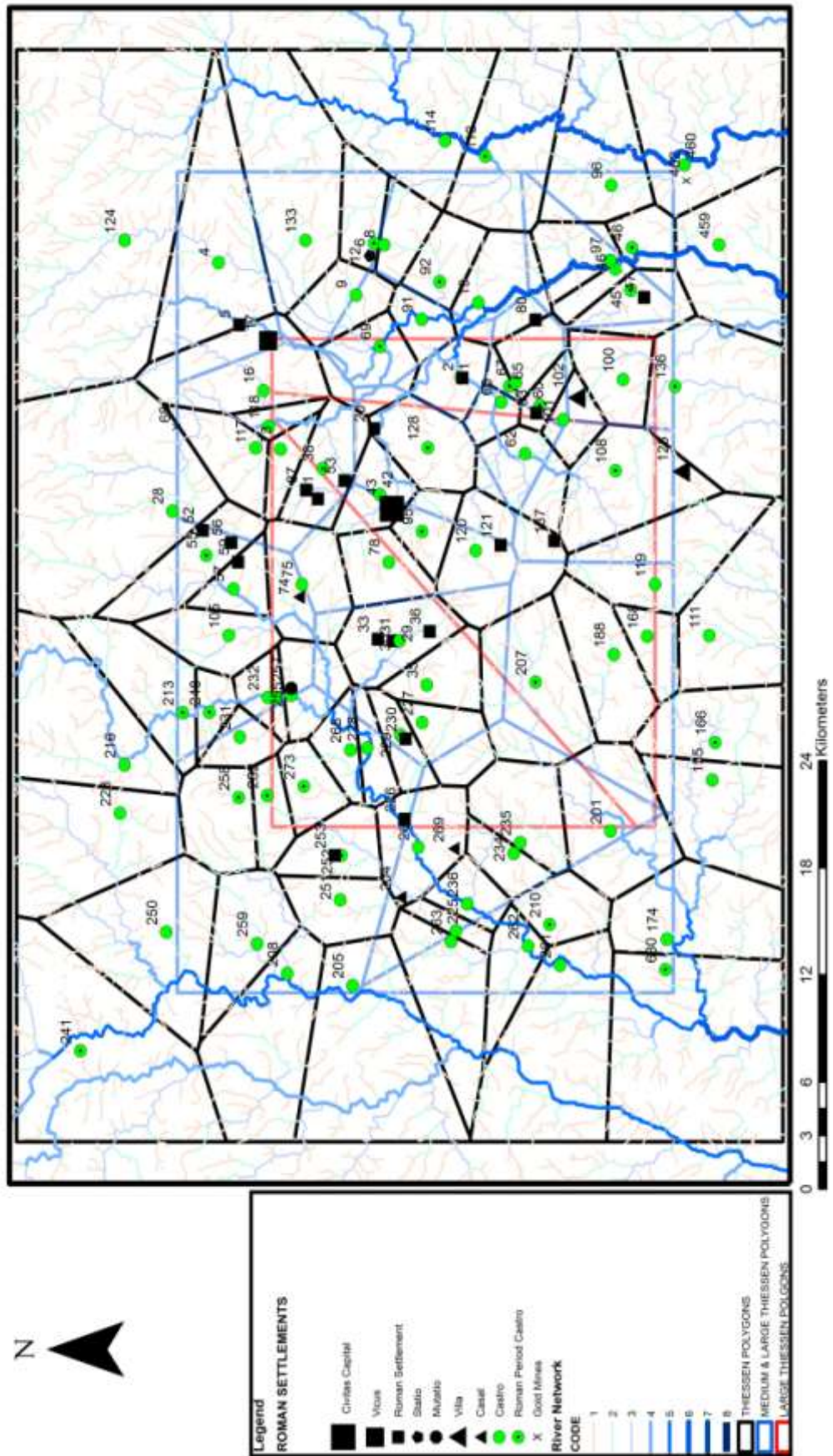
MAP 24. CHAVES. ROMAN SETTLEMENTS



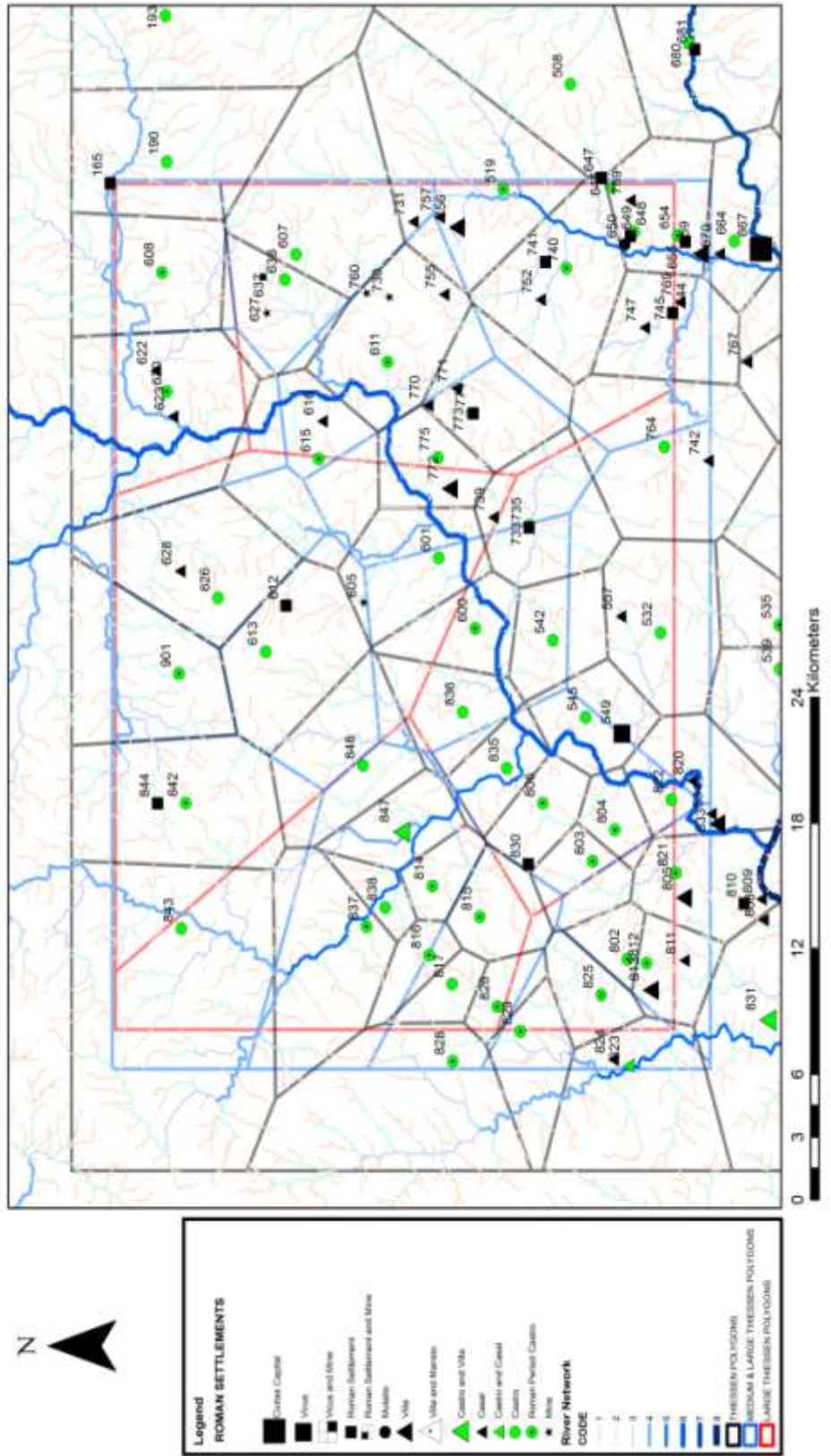
MAP 25. VIANA. ROMAN SETTLEMENTS



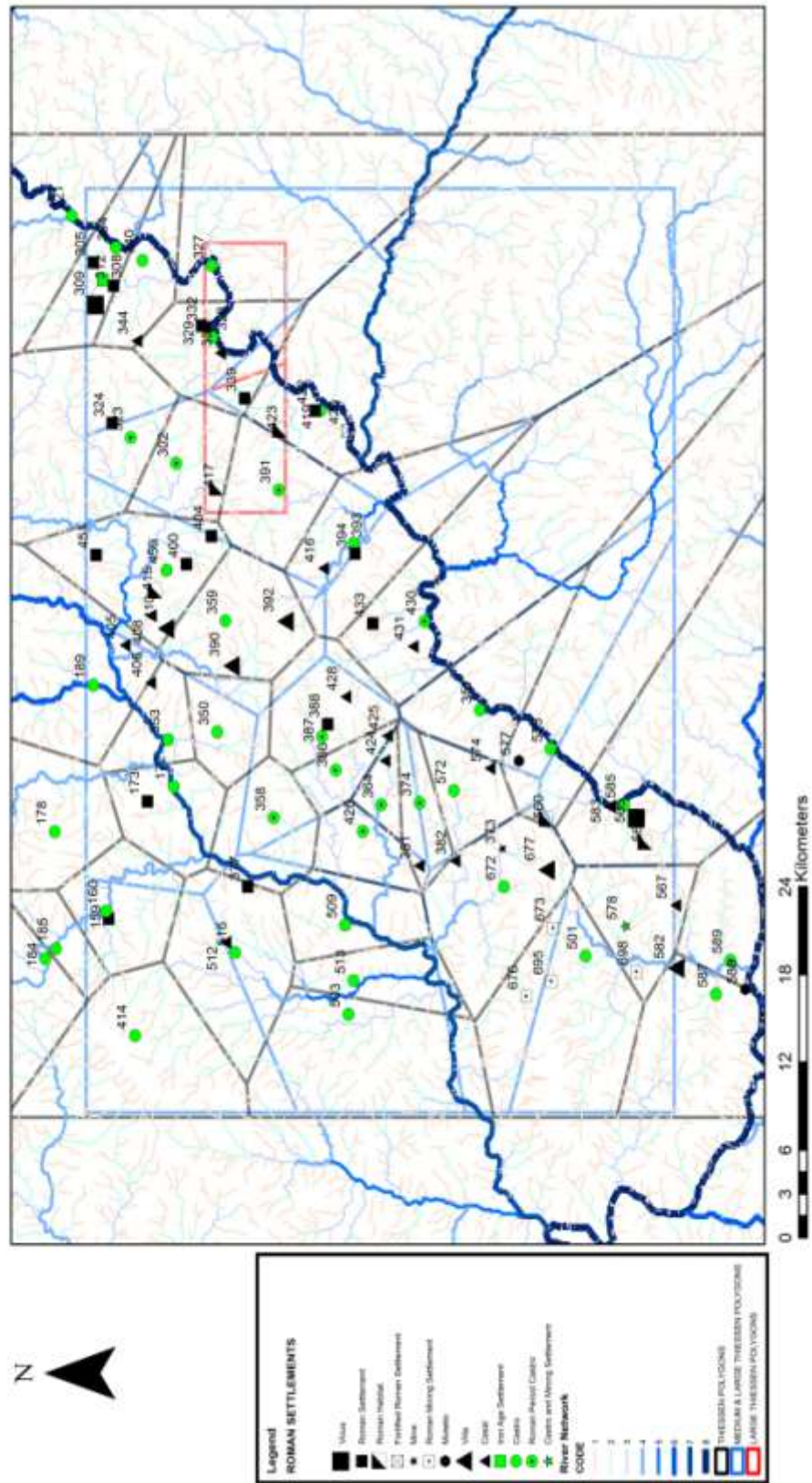
MAP 26. TRAS-OS-MONTES NORTH. MULTISCALAR THIESEN POLYGONS AND ROMAN SETTLEMENTS



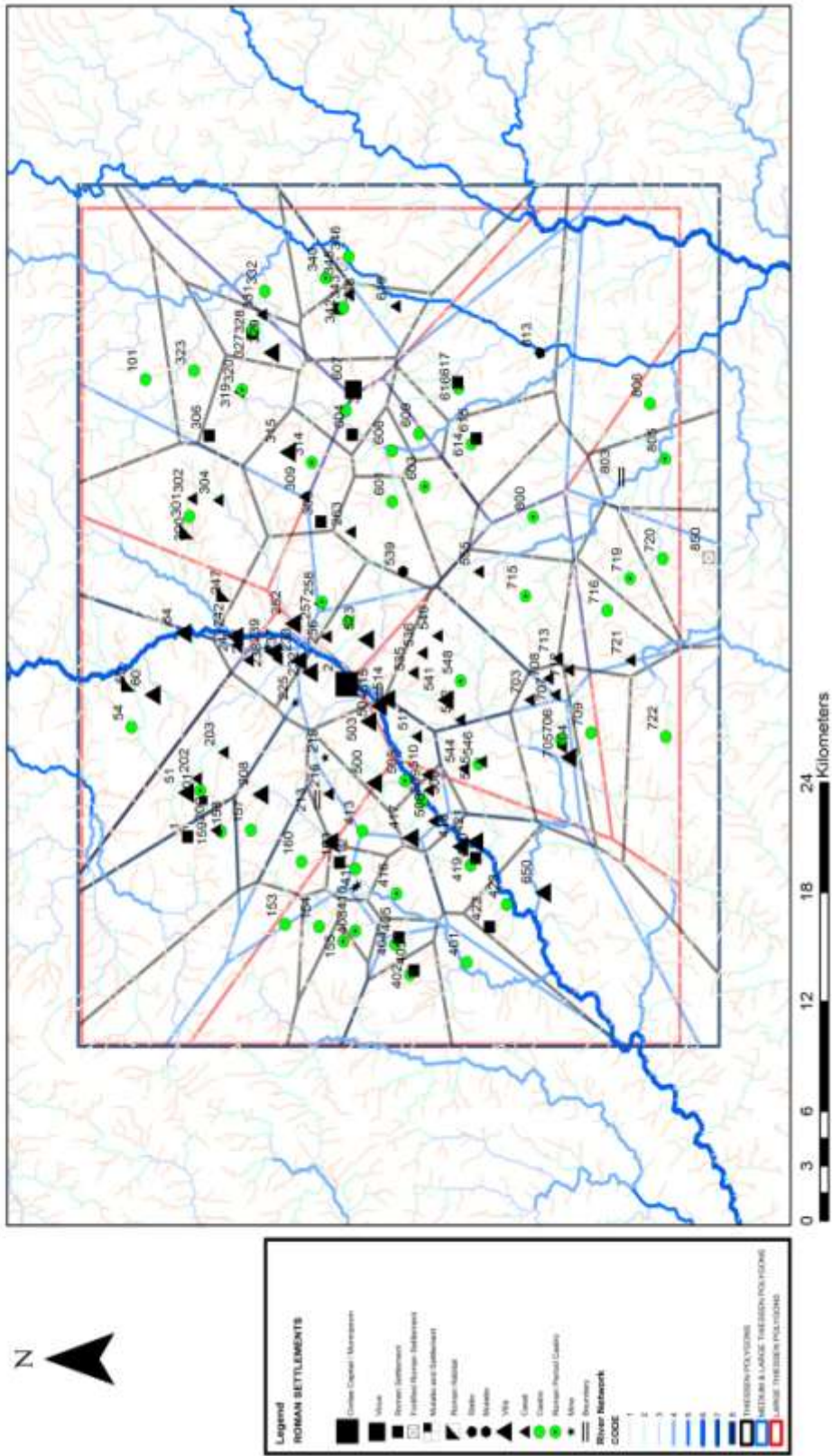
MAP 27. TRAS-OS-MONTES SOUTH. MULTISCALAR THIESSEN POLYGONS AND ROMAN SETTLEMENTS



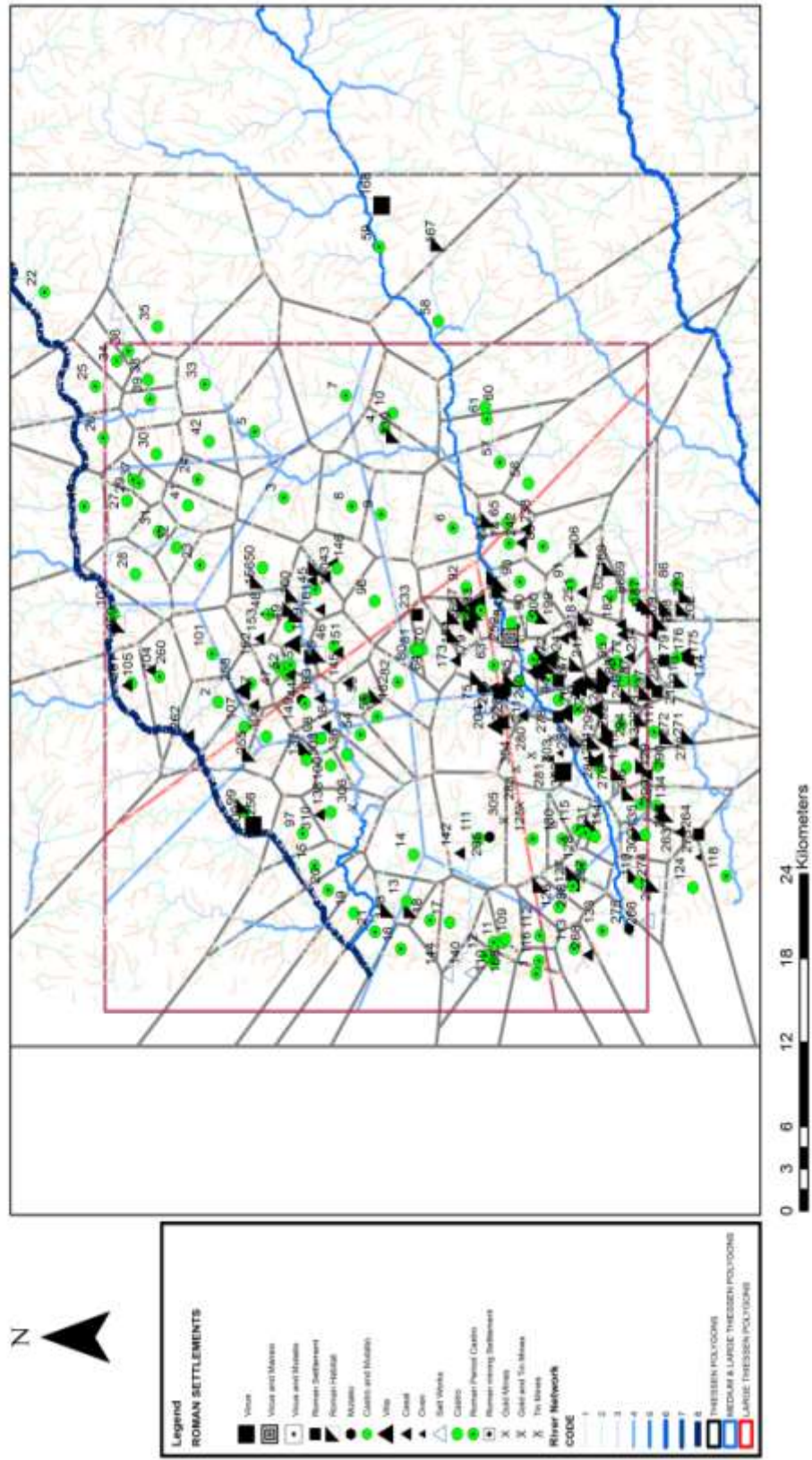
MAP 28. TRAS-OS-MONTES EAST. MULTISCALAR THIESEN POLYGONS AND ROMAN SETTLEMENTS



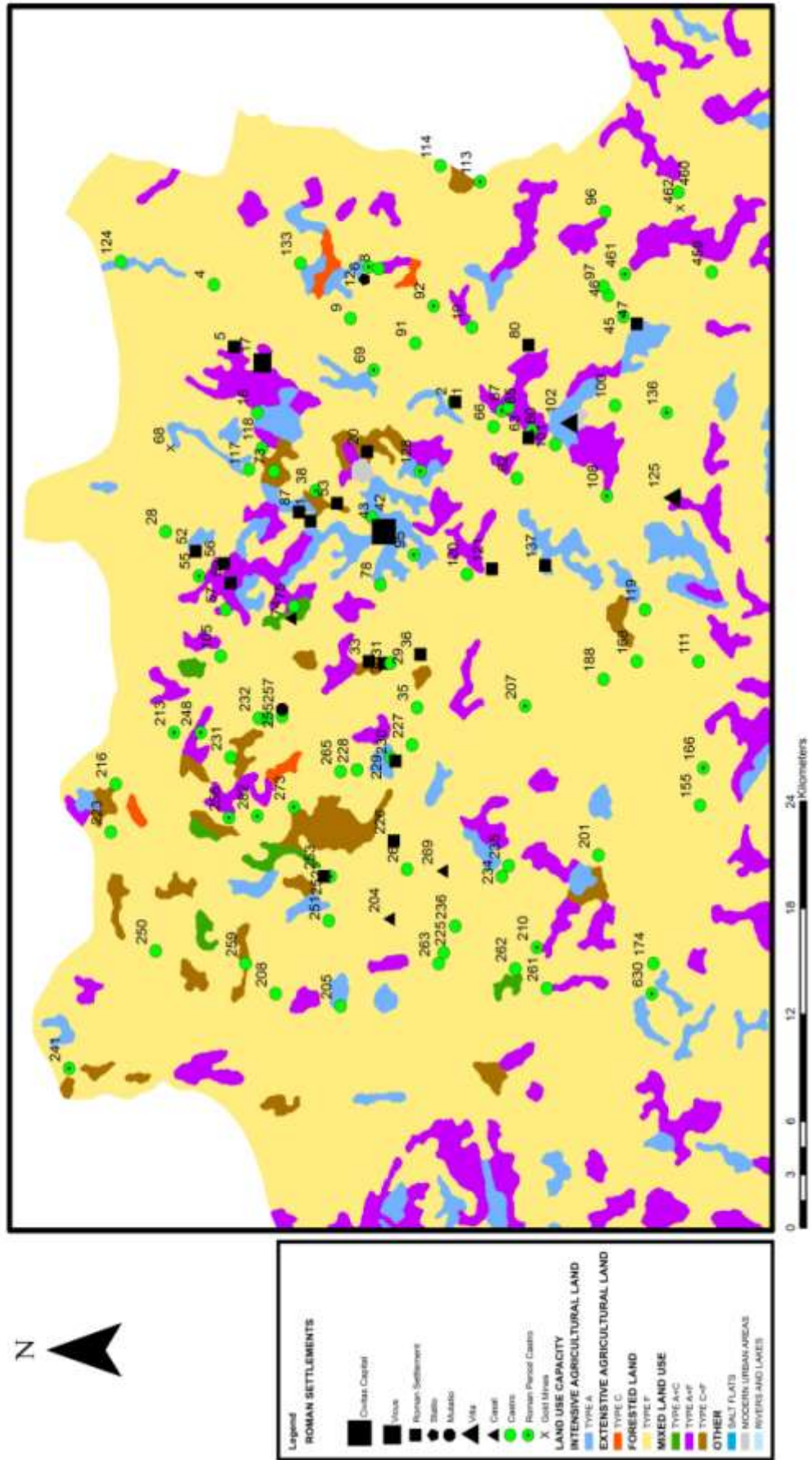
MAP 29. CHAVES. MULTISCALAR THIESSSEN POLYGONS AND ROMAN SETTLEMENTS



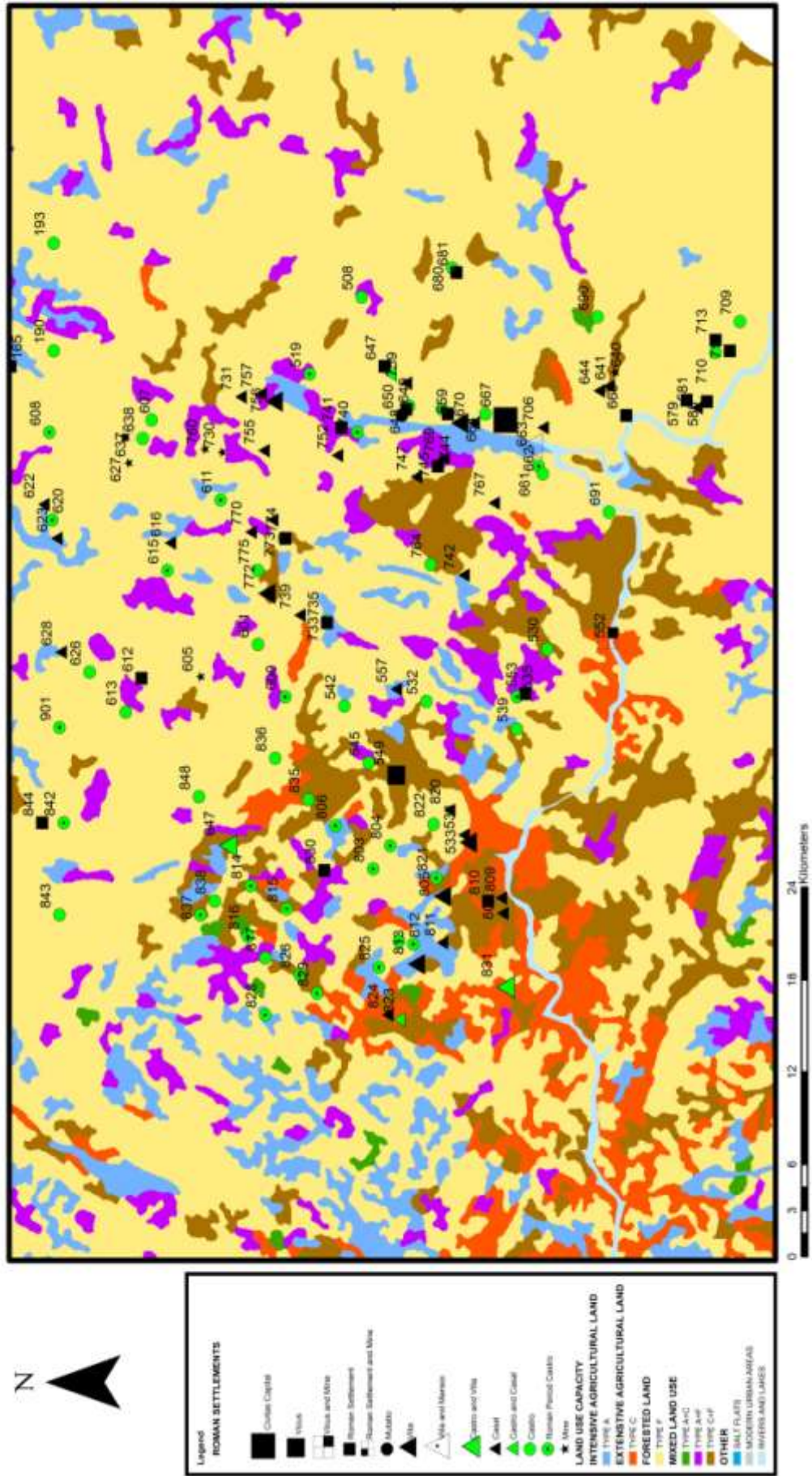
MAP 30. VIANA. MULTISCALAR THIESSEN POLYGONS AND ROMAN SETTLEMENTS



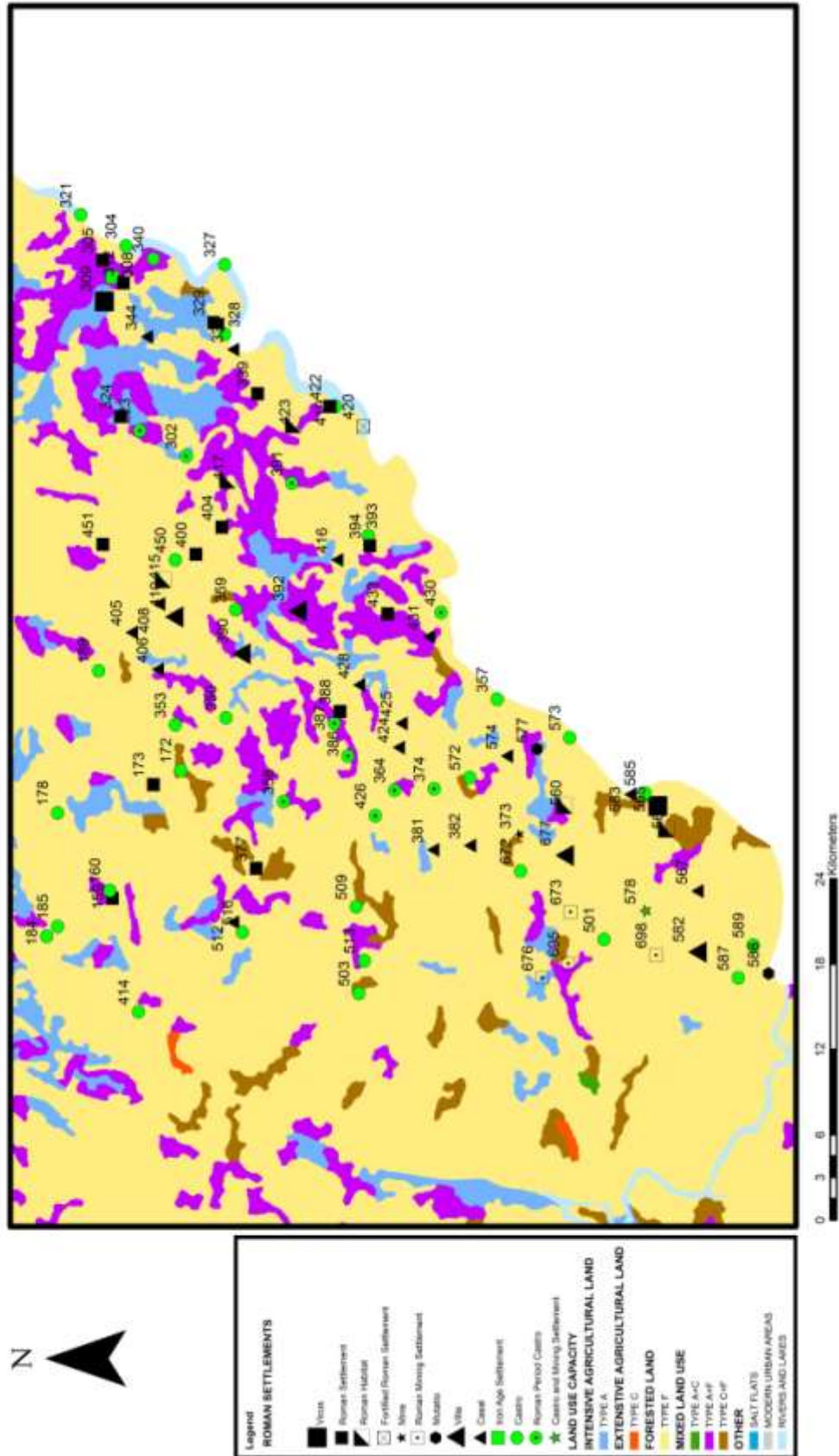
MAP 31. ROMAN TRAS-OS-MONTES NORTH. LAND USE CAPACITY



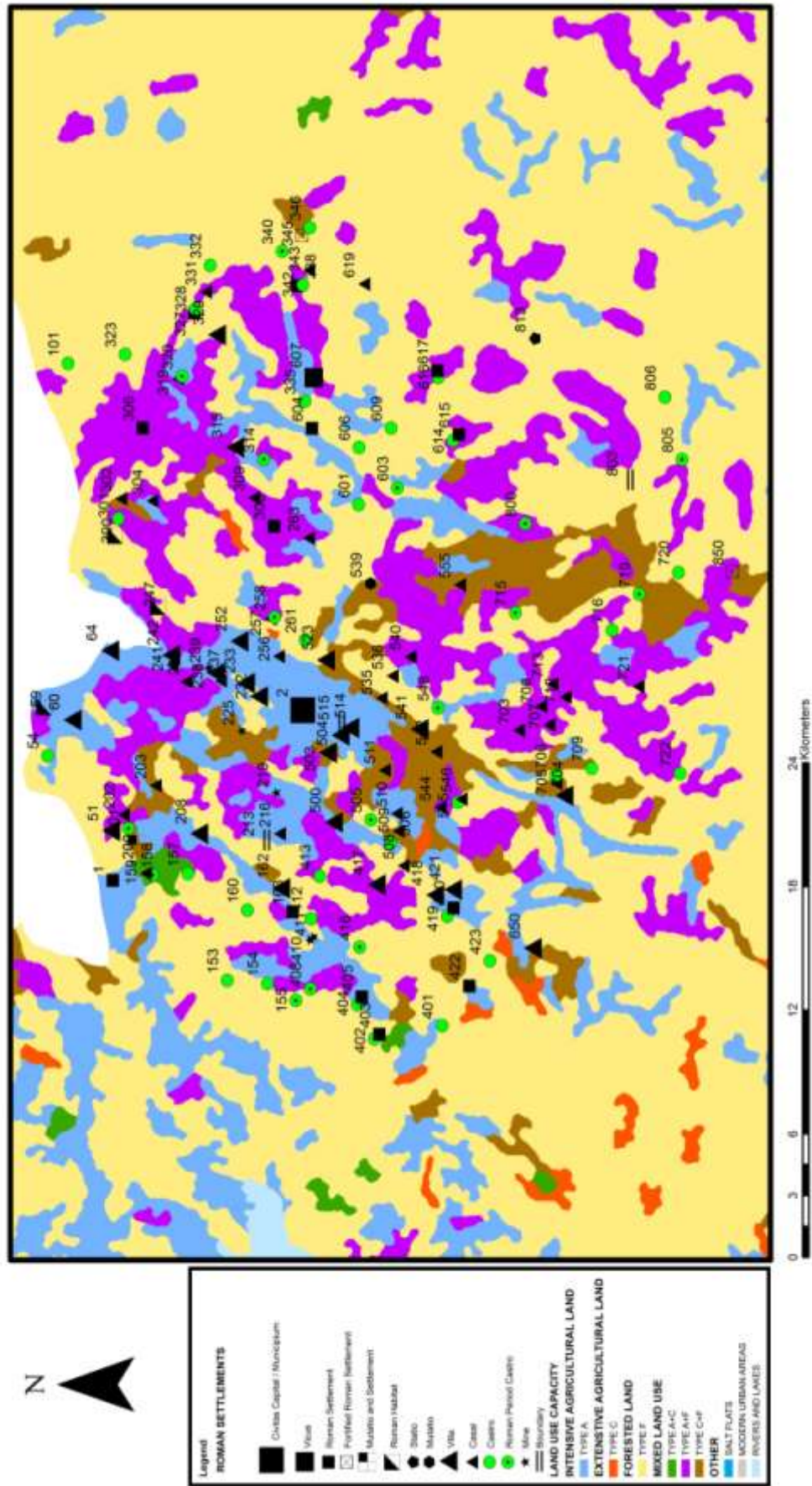
MAP 32. ROMAN TRAS-OS-MONTES SOUTH. LAND USE CAPACITY



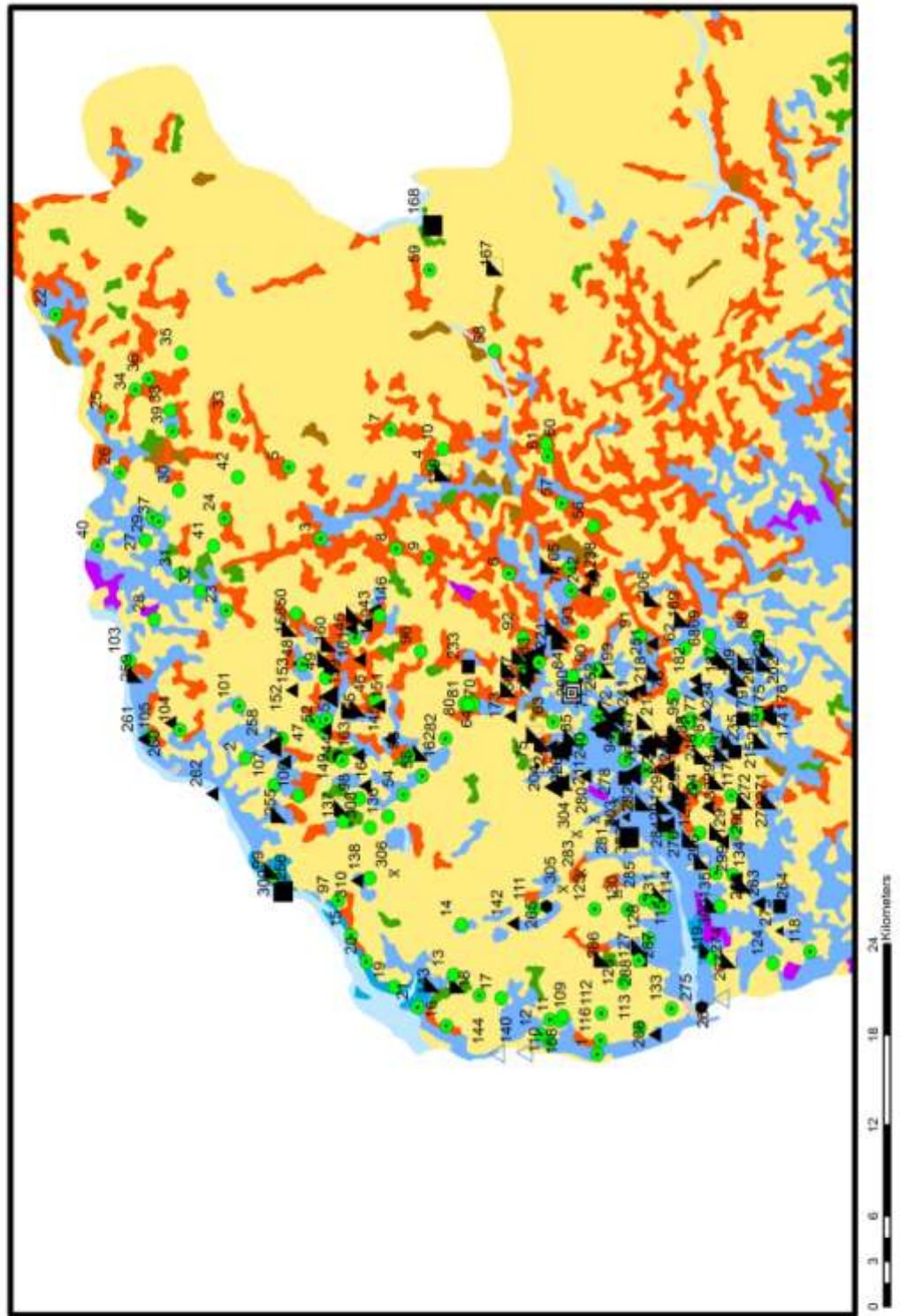
MAP 33. ROMAN TRAS-OS-MONTES EAST. LAND USE CAPACITY



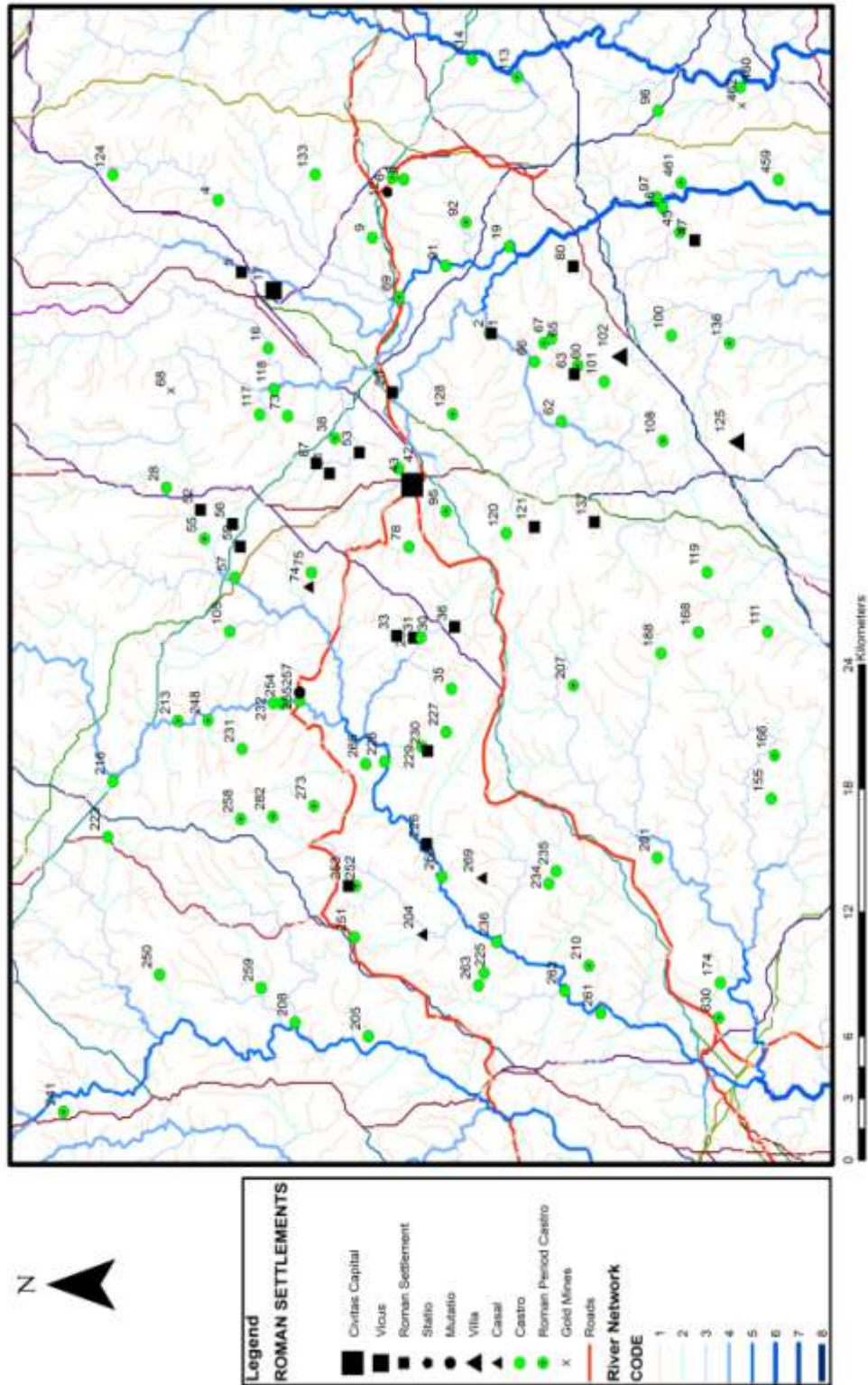
MAP 34. ROMAN CHAVES. LAND USE CAPACITY



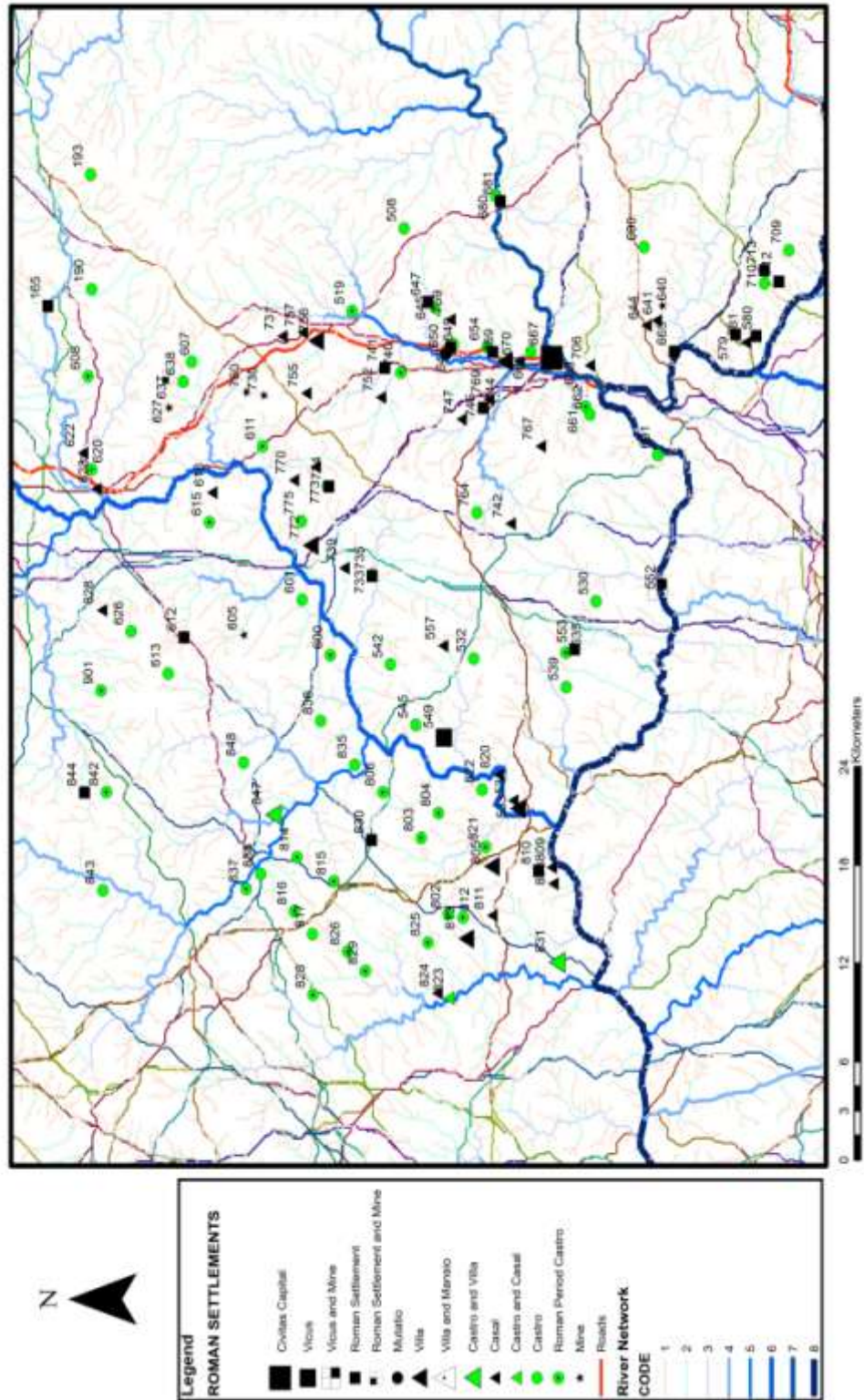
MAP 35. ROMAN VIANA. LAND USE CAPACITY



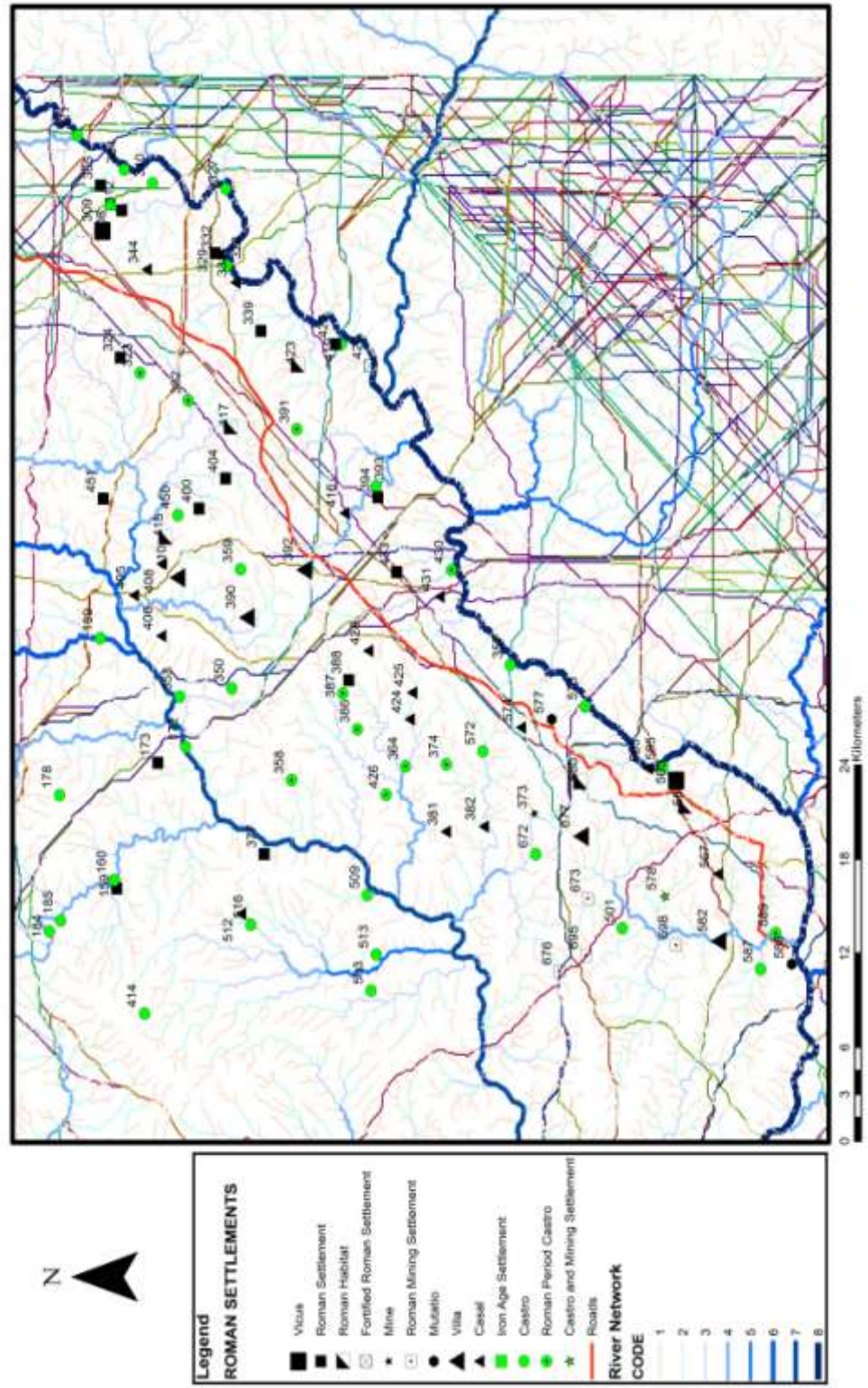
MAP 36. TRAS-OS-MONTES NORTH. ROMAN ROADS AND LEAST-COST PATHS



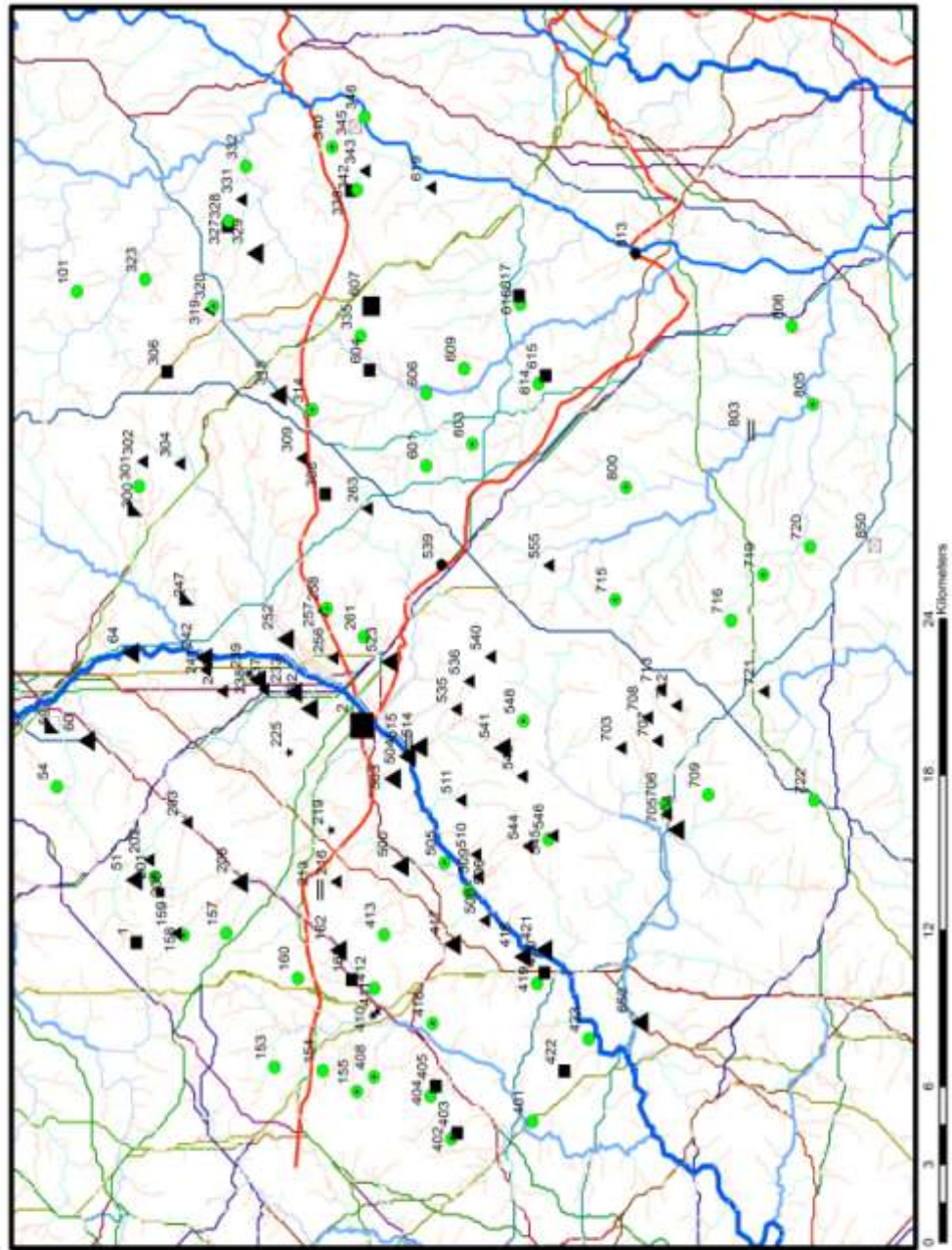
MAP 37. TRAS-OS-MONTES SOUTH. ROMAN ROADS AND LEAST-COST PATHS



MAP 38. TRAS-OS-MONTES EAST. ROMAN ROADS AND LEAST-COST PATHS



MAP 39. CHAVES. ROMAN ROADS AND LEAST-COST PATHS



Legend

ROMAN SETTLEMENTS

- Civitas Capital / Municipium
- Vicus
- Roman Settlement
- Fortified Roman Settlement
- Mutatio and Settlement
- Roman Habitat
- Statio
- Mutatio
- ▲ Villa
- ▲ Casal
- ▲ Castro
- Roman Period Castro
- ▲ Mine

— Boundary

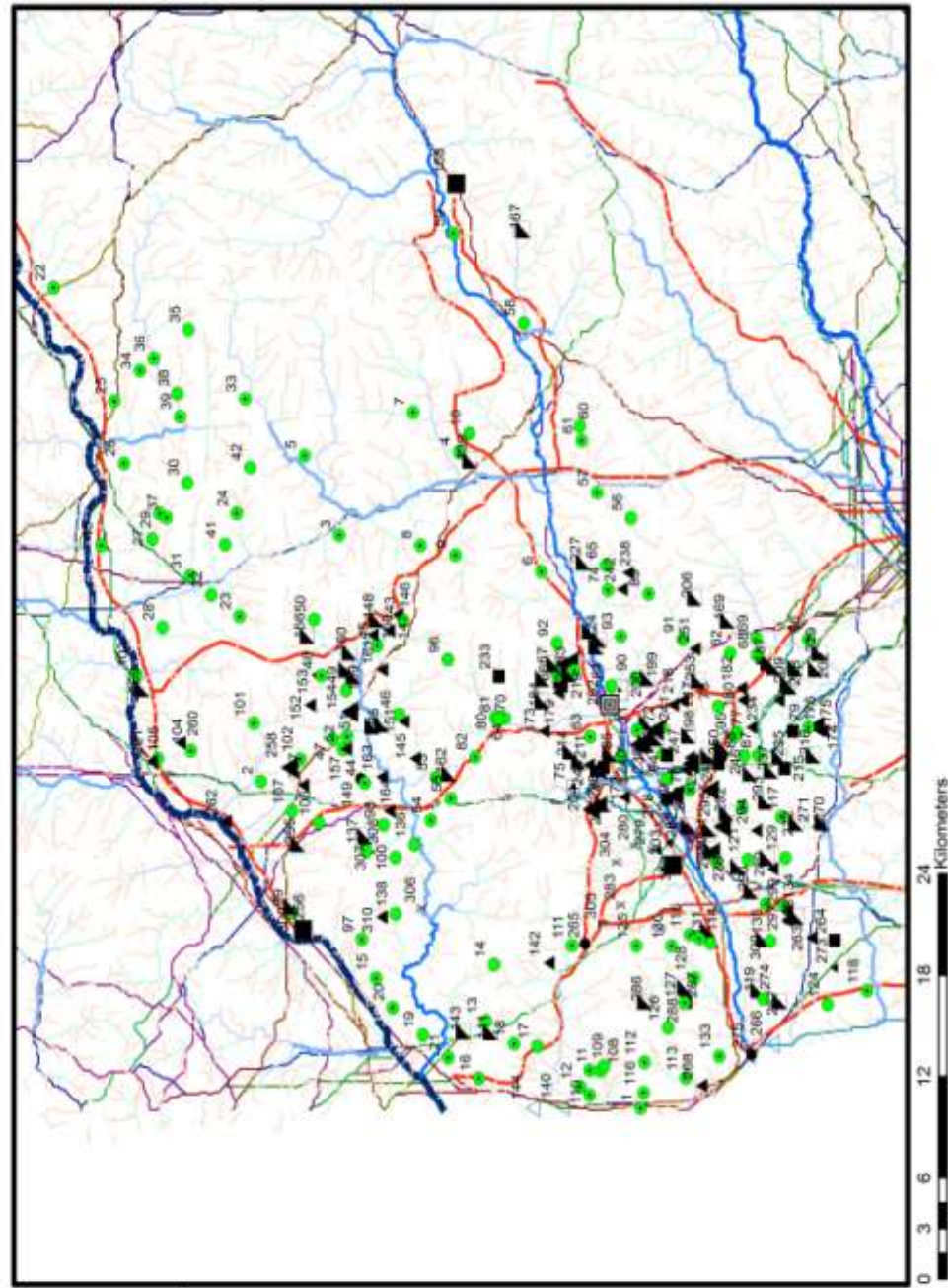
— Roads

River Network

CODE

- 1
- 2
- 3
- 4
- 5
- 6
- 7
- 8

MAP 40. VIANA. ROMAN ROADS AND LEAST-COST PATHS



Legend

ROMAN SETTLEMENTS

- Vicus
- ▣ Vicus and Mansio
- ▣ Vicus and Mutatio
- ▣ Roman Settlement
- ▣ Roman Habitat
- Mutatio
- Castrum and Mutatio
- ▲ Villa
- ▲ Caesal
- ▲ Oven
- ▲ Salt Works
- ▲ Castro
- Roman Period Castro
- Roman mining Settlement
- X Gold Mines
- X Gold and Tin Mines
- X Tin Mines

River Network

CODE

1
2
3
4
5
6
7
8