

# Is *LMNB1* a Susceptibility Gene for Neural Tube Defects in Humans?

Alexis Robinson,<sup>1</sup> Darren Partridge,<sup>1</sup> Ashraf Malhas,<sup>2</sup> Sandra C.P. De Castro,<sup>1</sup> Peter Gustavsson,<sup>3</sup> Dominic N. Thompson,<sup>4</sup> David J. Vaux,<sup>2</sup> Andrew J. Copp,<sup>1</sup> Philip Stanier,<sup>1</sup> Alexander G. Bassuk,<sup>5</sup> and Nicholas D.E. Greene<sup>1\*</sup>

<sup>1</sup>Neural Development Unit and Newlife Birth Defects Research Centre, Institute of Child Health, University College London, United Kingdom

<sup>2</sup>Sir William Dunn School of Pathology, University of Oxford, United Kingdom

<sup>3</sup>Department of Molecular Medicine and Surgery, Karolinska Institutet, Stockholm, Sweden

<sup>4</sup>Department of Neurosurgery, Great Ormond Street Hospital for Children NHS Trust, London, United Kingdom

<sup>5</sup>Department of Pediatrics, University of Iowa, Iowa City, Iowa

Received 18 February 2013; Revised 13 March 2013; Accepted 27 March 2013

**BACKGROUND:** Lamins are intermediate filament proteins that form a major component of the nuclear lamina, a protein complex at the surface of the inner nuclear membrane. Numerous clinically diverse conditions, termed laminopathies, have been found to result from mutation of *LMNA*. In contrast, coding or loss of function mutations of *LMNB1*, encoding lamin B1, have not been identified in human disease. In mice, polymorphism in *Lmnb1* has been shown to modify risk of neural tube defects (NTDs), malformations of the central nervous system that result from incomplete closure of the neural folds. **METHODS:** Mutation analysis by DNA sequencing was performed on all exons of *LMNB1* in 239 samples from patients with NTDs from the United Kingdom, Sweden, and United States. Possible functional effects of missense variants were analyzed by bioinformatics prediction and fluorescence in photobleaching. **RESULTS:** In NTD patients, we identified two unique missense variants that were predicted to disrupt protein structure/function and represent putative contributory mutations. Fluorescence loss in photobleaching analysis showed that the A436T variant compromised stability of lamin B1 interaction within the lamina. **CONCLUSION:** The genetic basis of human NTDs appears highly heterogeneous with possible involvement of multiple predisposing genes. We hypothesize that rare variants of *LMNB1* may contribute to susceptibility to NTDs. *Birth Defects Research (Part A) 97:398–402, 2013.* © 2013 Wiley Periodicals, Inc.

**Key words:** anencephaly; lamin B1; neural tube defects; nuclear lamina; spina bifida

## INTRODUCTION

Lamins are intermediate filament proteins that are key components of the nuclear lamina, a meshwork of lamin polymers and lamin-binding proteins that underlies the inner nuclear membrane (Capell and Collins, 2006; Gruenbaum et al., 2005; Worman et al., 2009). *LMNA* encodes lamin A and C (A-type lamins), while the B-type lamins are encoded by *LMNB1* (lamin B1) and *LMNB2* (lamins B2 and B3).

Genomic duplication of *LMNB1* causes adult-onset autosomal dominant leukodystrophy, a progressive demyelinating disorder (Padiath et al., 2006; Schuster et al., 2011). However, coding or loss-of-function mutations of *LMNB1* have not yet been identified in human disease. This is in marked contrast to *LMNA*, mutation of which results in several clinically distinct diseases, termed laminopathies. These include progeria syndromes

(e.g., Hutchinson-Gilford progeria syndrome and Atypical Werner syndrome), muscular dystrophy disorders (e.g., Emery-Dreyfus muscular dystrophy), lipodystrophies, and Charcot-Marie-Tooth disease type 2B1, a peripheral neuropathy (Capell and Collins, 2006; Worman

© 2013 The Authors. Birth Defects Research Part A published by Wiley-Blackwell. This is an open access article under the terms of the Creative Commons Attribution License, which permits use, distribution and reproduction in any medium, provided the original work is properly cited.

Darren Partridge's current address is: Department of Medicine, Monash University Central Clinical School, Prahran, Victoria 3181, Australia.

\*Correspondence to: Nicholas D.E. Greene, Neural Development Unit, Newlife Birth Defects Research Centre, UCL Institute of Child Health, 30 Guilford Street, London, WC1N 1EH, UK. E-mail: n.greene@ucl.ac.uk

Published online 3 June 2013 in Wiley Online Library (wileyonlinelibrary.com).

DOI 10.1002/bdra.23141

et al., 2010). Mutations in *LMNB2* may also contribute to acquired partial lipodystrophy (Hegele et al., 2006).

A role for B-type lamins in nervous system development was indicated by the finding of neuronal migration defects and consequent cortical abnormalities in *Lmnb1* and *Lmnb2* knockout mice (Coffinier et al., 2010; Coffinier et al., 2011), while forebrain-specific *Lmnb1/Lmnb2* double mutants exhibit cortical atrophy. A possible requirement for lamin B1 function in early development of the central nervous system was recently highlighted by the identification of *Lmnb1* as a possible modifier gene for neural tube defects (NTDs) in mice (De Castro et al., 2012). A polymorphic variant of *Lmnb1* was found to be present on the genetic background of the *curly tail* strain, in which embryos develop partially penetrant spinal and cranial NTDs due to incomplete closure of the neural tube. This variant (Deletion 18: 56909394) contains a series of eight instead of nine glutamic acid residues in the C-terminal domain of the protein, leading to increased mobility in the lamina. There was a corresponding increase in numbers of dysmorphic nuclei and premature senescence in fibroblasts expressing the variant lamin B1 (De Castro et al., 2012), reminiscent of the cellular phenotype of *Lmnb1* null fibroblasts (Vergnes et al., 2004). The principal genetic cause of NTDs in the *curly tail* strain is homozygosity for a hypomorphic allele of *grainyhead-like-3* (*Grhl3*) (Gustavsson et al., 2007). However, breeding the wild-type *Lmnb1* onto the *curly tail* strain background resulted in a threefold reduction in the frequency of spina bifida and exencephaly (De Castro et al., 2012).

In the current study, we investigated a possible role for *LMNB1* mutation in human NTDs, which are among the most common birth defects, affecting around 1 per 1000 pregnancies worldwide, with higher rates in some regions. Elucidation of the causes of NTDs is problematic owing to their complex, multifactorial etiology and largely sporadic nature (Bassuk and Kibar, 2009; Greene et al., 2009). The defining feature of NTDs, such as spina bifida and anencephaly, is the failure of closure of the neural tube during embryonic development (Copp and Greene, 2010). This process is dependent on coordinated shaping, bending, and fusion of the neural folds (Greene and Copp, 2009). The sensitivity of these events to genetic disruption is exemplified by the fact that individual mutation of more than 200 different genes has been found to result in NTDs in mice (Copp et al., 2003; Harris and Juriloff, 2007; Harris and Juriloff, 2010).

Several lines of evidence indicate that there is a genetic component in human NTDs, the clearest indication being the progressive increase in recurrence risk following affected pregnancies (Harris and Juriloff, 2007). Susceptibility to NTDs is also influenced by environmental factors. These include maternal diabetes or use of anti-epileptic medication, which are known to exacerbate risk, or maternal use of folic acid supplements, which is protective. Identification of these risk factors provided impetus for extensive analysis of genes related to glucose and folate metabolism in the causation of NTDs. Associations have been reported between genes involved with glucose metabolism and susceptibility to spina bifida (Davidson et al., 2008; Lupu et al., 2012). Several genes related to folate metabolism have also shown associations with risk of NTDs (reviewed by Boyles et al., 2005; Blom et al., 2006; Greene et al., 2009; Shaw et al., 2009). In addition to association studies, sequencing analysis has been performed on numerous candidate genes, implicated either by

known environmental risk factors in humans or by the presence of NTDs in mouse models. For example, loss of function mutations in components of the glycine cleavage system, a constituent of mitochondrial folate metabolism, have been identified in NTD patients and disruption of the glycine cleavage system through knockout of *Amt* also causes NTDs in mice (Narisawa et al., 2012). Loss of function mutations in genes encoding components of the noncanonical Wnt signaling pathway (planar cell polarity pathway) causes craniorachischisis in mice, and predisposes to spina bifida or anencephaly in some digenic models (reviewed in Greene et al., 2009; Juriloff and Harris, 2012). Analysis of planar cell polarity genes in humans has revealed mutations in *SCRIB* and *CELSR1* in craniorachischisis cases (Robinson et al., 2012), while mutations in *VANGL1*, *VANGL2*, *CELSR1*, and *FZD6* have also been identified in spina bifida and anencephaly cases (Kibar et al., 2007; Kibar et al., 2009; Lei et al., 2010; Allache et al., 2012; De Marco et al., 2012). To date, no individual gene has been found to be mutated in a more than a small percentage of NTD patients, supporting the idea of wide genetic heterogeneity. Nevertheless, these studies encourage the view that mouse models provide insight into the genetic etiology of human NTDs.

## MATERIALS AND METHODS

### Patient Cohorts and Sequencing

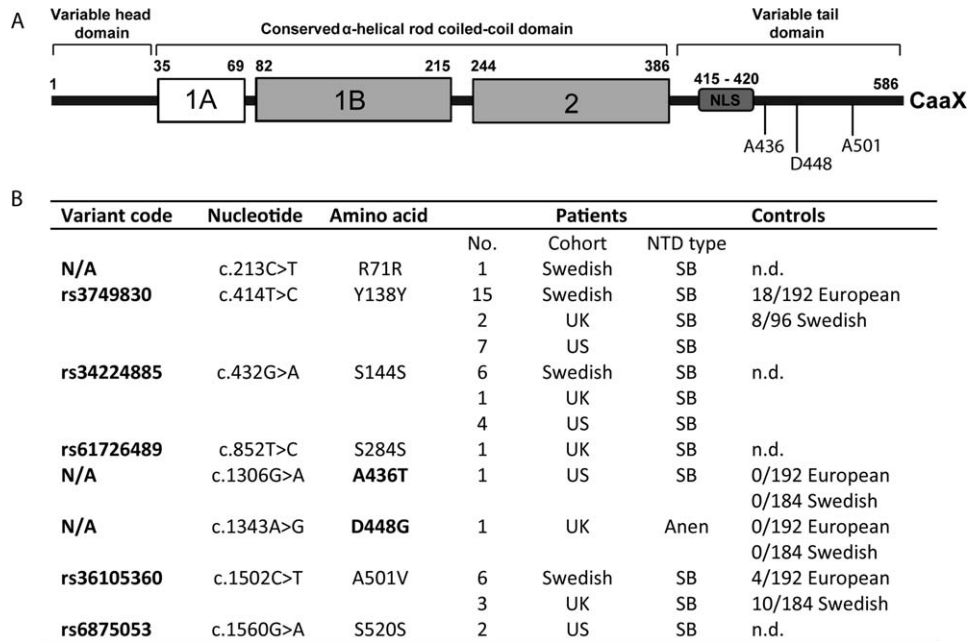
Mutation analysis by DNA sequencing was performed on all exons of *LMNB1* (accession no. L37737.2; HGNC: 6637). Cases comprised a total of 239 samples from patients with NTDs collected, with ethical permission, in the United Kingdom (n = 65; Newcastle upon Tyne Hospital, Queen Charlotte's and Chelsea Hospital, Great Ormond Street Hospital for Sick Children), Sweden (n = 76; Karolinska University Hospital), and the United States (n = 98; Northwestern University, Children's Memorial Hospital, Illinois and Greenwood Genetics Center, South Carolina). In the majority of cases, the phenotype was open spina bifida (myelomeningocele; n = 233), with a few cases of anencephaly (n = 3) and encephalocele (n = 3). Exons containing missense variants were also sequenced in a cohort of 192 well-characterized U.K. controls (Apostolidou et al., 2007) and a cohort of 184 Swedish controls.

### Sequencing

Genomic DNA fragments spanning exons and exon-intron boundaries of *LMNB1* were amplified by PCR (11 exons, 1758-bp open reading frame). Purified PCR products were sequenced using big dye terminator chemistry (Applied Biosystems) and analyzed on a 3100 Genetic Analyzer (ABI). Sequence reads derived from both strands were assembled, aligned, and analyzed for nucleotide differences using Sequencher v4.8 (GeneCodes). Unique variants were checked by repeat PCR and re-sequencing. Variants were assessed for frequency in the Exome Variant Server (National Heart, Lung, and Blood Institute GO Exome Sequencing Project [ESP]; Seattle, WA; <http://evs.gs.washington.edu/EVS/>; data release ESP6500, November 2012).

### Bioinformatic Analysis

The predicted effect of amino acid variants on protein structure/function was assessed using PolyPhen-2



**Figure 1.** *LMNB1* sequence variants identified in neural tube defect (NTD) patients. (A) Schematic diagram of lamin B1 protein structure shows the head and tail domains that mediate polymer assembly and the central rod, comprising coiled-coil domains (1A, 1B, and 2). A nuclear localization signal (NLS) is present in the tail domain. The positions of missense variants identified among patients are indicated. (B) Sequencing of *LMNB1* (NM\_005573.2 used as reference sequence) in 239 NTD patients revealed eight different variants (five synonymous and three nonsynonymous)

present in heterozygous form in a total of 48 individuals (2 patients carried two heterozygous variants). None of the variants were predicted to affect splicing. Two variants were present in NTDs but not in 376 controls sequenced in this study or in the Exome Variant Server database. Frequency of previously reported variants in the Exome Variant Server database were rs3749830, C=700/T=12,306; rs34224885, A=355/G=12,651; rs61726489, C=55/T=12,951; rs36105360, T=252/C=12,754; rs6875053, A=527/G=12,479.

(v2.2.2r398) and potential effects on splicing were predicted using Alamut software (v2.0). Lamin B1 protein sequences from multiple species were aligned using MultAlin software (Corpet, 1988). The aligned sequence was used to model the secondary structure and relative accessibility of residues in the globular tail domain (PDB ID 3UMN; residues 428–550) using tools in ESPript v2.2 (Gouet et al., 1999) and the protein data bank (www.pdb.org). Prediction of the effect of amino acid variants on local phosphorylation sites was performed using GPS2.1.

### Fluorescence Loss in Photobleaching

Constructs were generated in the pcDNA3.1 vector by standard cloning methods, to express fusion proteins composed of a nuclear localization signal, yellow fluorescent protein, and 200 amino acids of the lamin B1 C-terminal region. Missense variants were introduced by site-directed mutagenesis. Plasmids were transfected into HeLa cells and fluorescence loss in photobleaching was performed as described previously (Malhas et al., 2009). In brief, a region of interest was photobleached at full laser power while scanning at 4% laser power elsewhere. For quantitative analysis, background intensity was subtracted, and intensities of a specific region of interest outside the photobleached area were measured over time and normalized using intensities of a region of interest in a transfected but nonbleached cell.

## RESULTS

Exon sequencing of *LMNB1* revealed several variants in NTD patients (Fig. 1), each of which was present in heterozygous form. Variants included five synonymous and three nonsynonymous alterations. Four of the synonymous variants corresponded to known single nucleotide polymorphisms and one, c.213C>T (R71R), had not previously been reported in public variant databases. Three of the synonymous variants were present in two or more patients (24/239 in the case of rs3749830) and the other two, including the previously unreported variant, were only detected in single individuals.

Three nonsynonymous (missense) alterations were detected. Among these A501V corresponds to a previously reported single nucleotide polymorphism, rs36105360, and was detected in nine patients. In contrast, the two other variants A436T and D448G were each detected in only one individual, one with spina bifida and one with anencephaly. Neither variant was present in 376 controls (752 chromosomes), the single nucleotide polymorphisms database (dbSNP), or in the National Heart, Lung, and Blood Institute Exome Sequencing Project/Exome Variant Server Database. Alignment of protein sequences revealed that the alanine (A436) and aspartic acid (D448) residues found to vary in NTD patients are highly conserved (in human, chimpanzee, macaque, mouse, rat, dog, chick, frog, and zebra fish). Bioinformatics analysis indicated that the



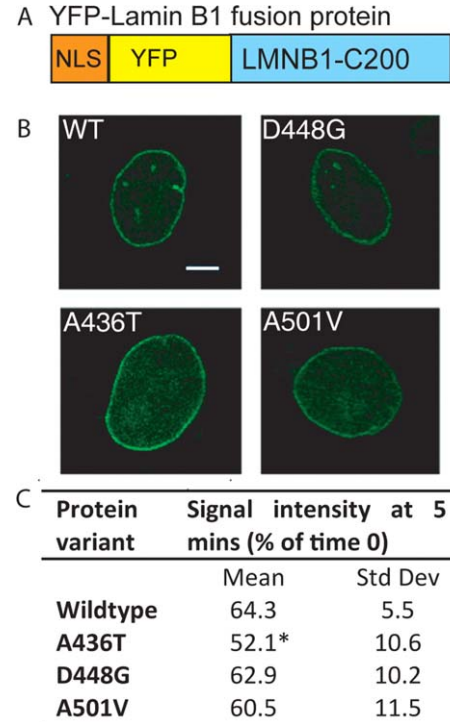
polymorphic A501V change is predicted to be a “benign” variant, whereas the A436T and D448G variants, which were unique to NTDs, are both predicted to be “probably damaging.” Both variants are located in the globular tail domain of the lamin B1 protein, residues 428 to 550 (Fig. 1A). In silico modeling of the secondary structure of the tail domain suggests that A436 is a surface residue and D448 is partially buried (data not shown). A436T lies in an area rich in serine/threonine potential phosphorylation sites. Bioinformatics prediction of the effect of the A436T variant on local phosphorylation sites (using GPS2.1) indicates possible effects on the phosphorylation of S431, S433, and S437. D448 lies 10 amino acid residues from the closest predicted phosphorylation sites (T439 and T459), and the D448G variant is not predicted to affect their modification.

To further examine the possible functional effects of the missense variants identified in NTD patients, we used fluorescence loss in photobleaching to analyze their effect on lamin B1 stability in the nuclear lamina. This approach relies on photobleaching of fluorescently tagged proteins in one area of the nuclear lamina and monitoring of loss of fluorescence intensity in an adjacent unbleached area as proteins relocate within the lamina. Fusion proteins comprising a nuclear localization sequence, yellow fluorescent protein, and the 200 C-terminal residues of lamin B1 (Fig. 2A) were expressed in HeLa cells, as previously performed (Malhas et al., 2007). All of the variant proteins localized to the nuclear envelope as observed for the wild-type protein (Fig. 2B). However, following photobleaching, there was a more rapid decline in fluorescence intensity in the unbleached area of membrane in cells expressing the A436T variant compared with wild-type (Fig. 2C). This behavior is indicative of increased mobility (Malhas et al., 2007) and, hence, decreased stability of interaction of the A436T variant within the nuclear envelope. Neither D448G nor A501V showed a significant difference in the decline in signal intensity to the wild-type protein (Fig. 2C).

## DISCUSSION

Pinpointing the genetic basis of NTDs is particularly challenging owing to their multigenic inheritance and potential influence of environmental factors. Thus, unlike many NTD mouse models in which defects arise in homozygous null embryos, NTDs in humans rarely show Mendelian inheritance. It appears likely that a defect in a given individual may arise from summation of two or more factors that are individually insufficient to cause NTDs. Where putative contributory mutations have been identified, for example in genes of the planar cell polarity pathway or glycine cleavage system, they are present in heterozygous form and, where evaluated, have usually been found to be inherited from an unaffected parent (reviewed by Narisawa et al., 2012). This suggests that these NTD patients also carry variant alleles in other genes, consistent with the multigenic threshold model of inheritance of NTDs (Harris and Juriloff, 2007). We propose that *LMNB1* may represent one such “susceptibility” gene in which rare variants contribute to NTD predisposition in some individuals.

Whereas only a small proportion of NTD patients exhibited putative mutations in *LMNB1*, two missense variants were unique to NTD patients and both were predicted to be damaging. We could not determine



**Figure 2.** Functional analysis of lamin B1 missense variants by fluorescence loss in photobleaching. (A) HeLa cells were transfected with constructs expressing fusion proteins comprising a nuclear localization signal, yellow fluorescent protein (YFP), and the C-terminal 200 amino acids of lamin B1, which corresponds to the tail domain. (B) The wild-type and mutant fusion proteins all localize to the nuclear lamina. (C) FLIP analysis showed similar loss of signal intensity in the lamina of cells expressing fusion proteins with the wild-type lamin B1 sequence and the D448G or A501V variants. The A436T variant showed a significantly greater decline in signal intensity ( $P < 0.01$ ;  $t$ -test), indicating greater mobility in the nuclear lamina. Scale bar = 5  $\mu$ m. [Color figure can be viewed in the online issue, which is available at [wileyonlinelibrary.com](http://wileyonlinelibrary.com).]

whether the mutations arose de novo, as parental samples were not available. In the case of A436T, we also found a direct effect of the variant, compromising the stability of the protein’s interaction in the nuclear lamina. Such an effect was also observed for the variant found to increase susceptibility to NTDs in mice (De Castro et al., 2012). Lamins have multiple functions in the nuclear envelope and influence a variety of cellular properties. There is a structural role of lamins in assembly and maintenance of the nuclear envelope, nuclear shape, and anchoring of nuclear pore complexes (Hutchison, 2002; Dechat et al., 2008). Lamin B1 has additional functions in DNA synthesis and transcriptional regulation, mediated through interactions with both chromatin and transcription factors (Malhas et al., 2007; Malhas et al., 2010; Mekhail and Moazed, 2010). Dysregulation of cellular proliferation and/or transcriptional regulation both represent potential mechanisms by which impairment of lamin B1 function could impact on neural tube closure.

In summary, we hypothesize that mutations in *LMNB1* may contribute to susceptibility to NTDs in a subset of patients. Although the majority of cases analyzed in the

current study were spina bifida, we note that one of the mutations was present in a patient with anencephaly (cranial NTDs), suggesting that further analysis of *LMNB1* may be particularly worthwhile in this group of NTDs. Identification of susceptibility genes for NTDs will assist in understanding the genetic basis of NTDs in affected families and may inform development of possible preventive approaches.

### ACKNOWLEDGMENTS

The authors are grateful for support from the MRC, Wellcome Trust, and UCL Biomedical Research Centre. The authors thank the NHLBI GO Exome Sequencing Project and its ongoing studies, which produced and provided exome variant calls for comparison: the Lung GO Sequencing Project (HL-102923), the WHI Sequencing Project (HL-102924), the Broad GO Sequencing Project (HL-102925), the Seattle GO Sequencing Project (HL-102926), and the Heart GO Sequencing Project (HL-103010).

### REFERENCES

- Allache R, De MP, Merello E, et al. 2012. Role of the planar cell polarity gene *CELSR1* in neural tube defects and caudal agenesis. *Birth Defects Res A Clin Mol Teratol* 94:176–181.
- Apostolidou S, Abu-Amero S, O'Donoghue K, et al. 2007. Elevated placental expression of the imprinted *PHLDA2* gene is associated with low birth weight. *J Mol Med* 85:379–387.
- Bassuk AG, Kibar Z. 2009. Genetic basis of neural tube defects. *Semin Pediatr Neurol* 16:101–110.
- Blom HJ, Shaw GM, DenHeijer M, Finnell RH. 2006. Neural tube defects and folate: case far from closed. *Nat Rev Neurosci* 7:724–731.
- Boyles AL, Hammock P, Speer MC. 2005. Candidate gene analysis in human neural tube defects. *Am J Med Genet C Semin Med Genet* 135:9–23.
- Capell BC, Collins FS. 2006. Human laminopathies: nuclei gone genetically awry. *Nat Rev Genet* 7:940–952.
- Coffinier C, Chang SY, Nobumori C, et al. 2010. Abnormal development of the cerebral cortex and cerebellum in the setting of lamin B2 deficiency. *Proc Natl Acad Sci U S A* 107:5076–5081.
- Coffinier C, Jung HJ, Nobumori C, et al. 2011. Deficiencies in lamin B1 and lamin B2 cause neurodevelopmental defects and distinct nuclear shape abnormalities in neurons. *Mol Biol Cell* 22:4683–4693.
- Copp AJ, Greene NDE. 2010. Genetics and development of neural tube defects. *J Pathol* 220:217–230.
- Copp AJ, Greene NDE, Murdoch JN. 2003. The genetic basis of mammalian neurulation. *Nat Rev Genet* 4:784–793.
- Corpet F. 1988. Multiple sequence alignment with hierarchical clustering. *Nucleic Acids Res* 16:10881–10890.
- Davidson CM, Northrup H, King TM, et al. 2008. Genes in glucose metabolism and association with spina bifida. *Reprod Sci* 15:51–58.
- De Castro SC, Malhas A, Leung KY, et al. 2012. Lamin b1 polymorphism influences morphology of the nuclear envelope, cell cycle progression, and risk of neural tube defects in mice. *PLoS Genet* 8:e1003059.
- De Marco P, Merello E, Rossi A, et al. 2012. *FZD6* is a novel gene for human neural tube defects. *Hum Mutat* 33:384–390.
- Dechat T, Pfliegerhaer K, Sengupta K, Shimi T, Shumaker DK, Solimando L, and Goldman RD. 2008. Nuclear lamins: major factors in the structural organization and function of the nucleus and chromatin. *Genes Dev* 22:832–853.
- Gouet P, Courcelle E, Stuart DI, Metz F. 1999. ESPript: analysis of multiple sequence alignments in PostScript. *Bioinformatics* 15:305–308.
- Greene ND, Copp AJ. 2009. Development of the vertebrate central nervous system: formation of the neural tube. *Prenatal Diag* 29:303–311.
- Greene NDE, Stanier P, Copp AJ. 2009. Genetics of human neural tube defects. *Hum Mol Genet* 18:R113–R129.
- Gruenbaum Y, Margalit A, Goldman RD, Shumaker DK, Wilson KL. 2005. The nuclear lamina comes of age. *Nat Rev Mol Cell Biol* 6:21–31.
- Gustavsson P, Greene ND, Lad D, et al. 2007. Increased expression of Grainyhead-like-3 rescues spina bifida in a folate-resistant mouse model. *Hum Mol Genet* 16:2640–2646.
- Harris MJ, Juriloff DM. 2007. Mouse mutants with neural tube closure defects and their role in understanding human neural tube defects. *Birth Defects Res A Clin Mol Teratol* 79:187–210.
- Harris MJ, Juriloff DM. 2010. An update to the list of mouse mutants with neural tube closure defects and advances toward a complete genetic perspective of neural tube closure. *Birth Defects Res A Clin Mol Teratol* 88:653–669.
- Hegele RA, Cao H, Liu DM, et al. 2006. Sequencing of the reannotated *LMNB2* gene reveals novel mutations in patients with acquired partial lipodystrophy. *Am J Hum Genet* 79:383–389.
- Hutchison CJ. 2002. Lamins: building blocks or regulators of gene expression? *Nat Rev Mol Cell Biol* 3:848–858.
- Juriloff DM, Harris MJ. 2012. A consideration of the evidence that genetic defects in planar cell polarity contribute to the etiology of human neural tube defects. *Birth Defects Res A Clin Mol Teratol* 94:824–840.
- Kibar Z, Bosoi CM, Kooistra M, et al. 2009. Novel mutations in *VANGL1* in neural tube defects. *Hum Mutat* 30:E706–E715.
- Kibar Z, Torban E, McDearmid JR, et al. 2007. Mutations in *VANGL1* associated with neural-tube defects. *N Engl J Med* 356:1432–1437.
- Lei YP, Zhang T, Li H, et al. 2010. *VANGL2* mutations in human cranial neural-tube defects. *N Engl J Med* 362:2232–2235.
- Lupo PJ, Canfield MA, Chapa C, et al. 2012. Diabetes and Obesity-Related Genes and the Risk of Neural Tube Defects in the National Birth Defects Prevention Study. *Am J Epidemiol* 176:1101–1109.
- Malhas A, Lee CF, Sanders R, et al. 2007. Defects in lamin B1 expression or processing affect interphase chromosome position and gene expression. *J Cell Biol* 176:593–603.
- Malhas A, Saunders NJ, Vaux DJ. 2010. The nuclear envelope can control gene expression and cell cycle progression via miRNA regulation. *Cell Cycle* 9:531–539.
- Malhas AN, Lee CF, Vaux DJ. 2009. Lamin B1 controls oxidative stress responses via Oct-1. *J Cell Biol* 184:45–55.
- Mekhail K, Moazed D. 2010. The nuclear envelope in genome organization, expression and stability. *Nat Rev Mol Cell Biol* 11:317–328.
- Narisawa A, Komatsuzaki S, Kikuchi A, et al. 2012. Mutations in genes encoding the glycine cleavage system predispose to neural tube defects in mice and humans. *Hum Mol Genet* 21:1496–1503.
- Padiath QS, Saigoh K, Schiffmann R, et al. 2006. Lamin B1 duplications cause autosomal dominant leukodystrophy. *Nat Genet* 38:1114–1123.
- Robinson A, Escuin S, Doudney K, et al. 2012. Mutations in the planar cell polarity genes *CELSR1* and *SCRIB* are associated with the severe neural tube defect craniorachischisis. *Hum Mutat* 33:440–447.
- Schuster J, Sundblom J, Thuresson AC, et al. 2011. Genomic duplications mediate overexpression of lamin B1 in adult-onset autosomal dominant leukodystrophy (ADLD) with autonomic symptoms. *Neurogenetics* 12:65–72.
- Shaw GM, Lu W, Zhu H, et al. 2009. 118 SNPs of folate-related genes and risks of spina bifida and conotruncal heart defects. *BMC Med Genet* 10:49.
- Vergnes L, Peterfy M, Bergo MO, et al. 2004. Lamin B1 is required for mouse development and nuclear integrity. *Proc Natl Acad Sci U S A* 101:10428–10433.
- Worman HJ, Fong LG, Muchir A, Young SG. 2009. Laminopathies and the long strange trip from basic cell biology to therapy. *J Clin Invest* 119:1825–1836.
- Worman HJ, Ostlund C, Wang Y. 2010. Diseases of the nuclear envelope. *Cold Spring Harb Perspect Biol* 2:a000760.