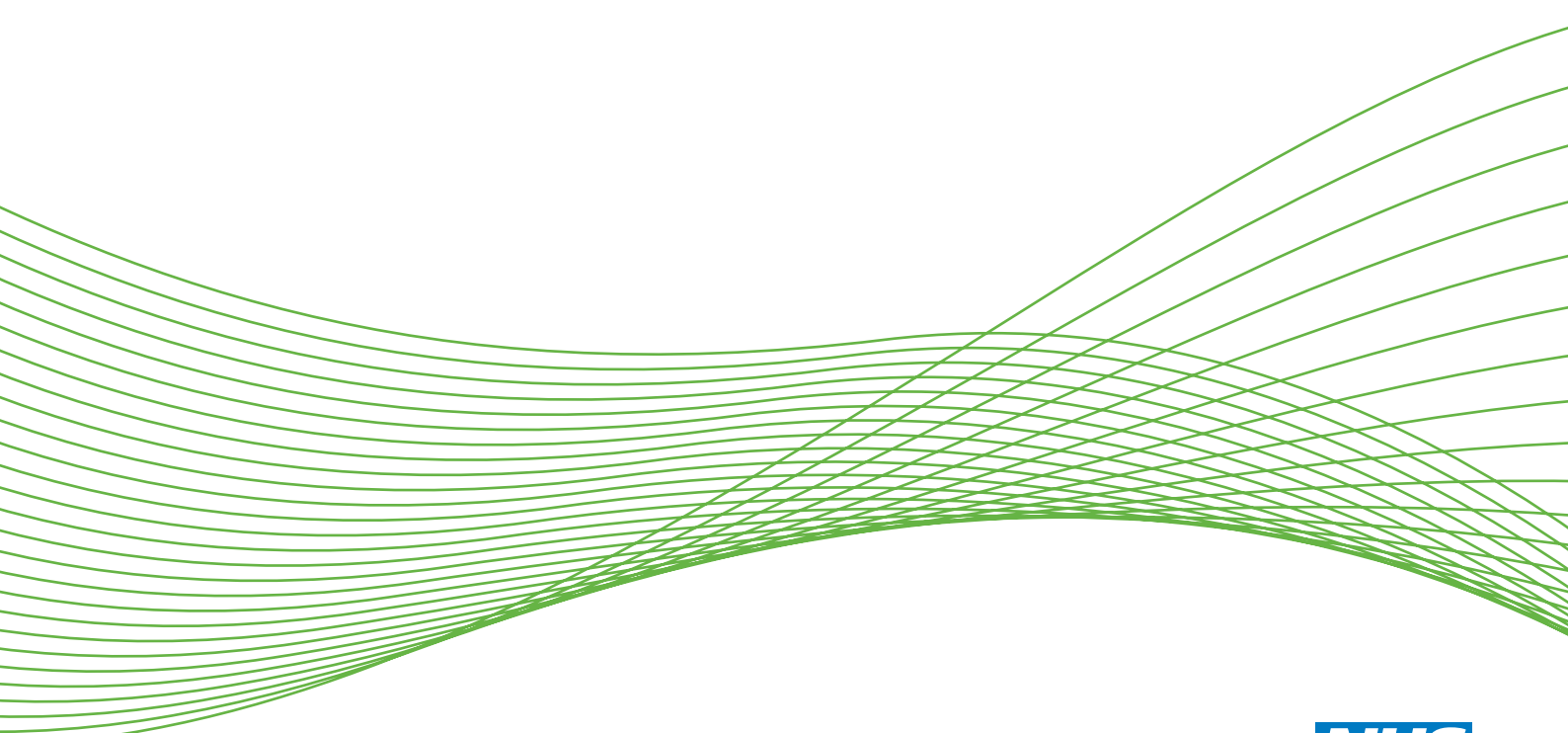


Planning for a cohort study to investigate the impact and management of influenza in pregnancy in a future pandemic

*Marian Knight, Peter Brocklehurst, Pat O'Brien,
Maria A Quigley and Jennifer J Kurinczuk*



***National Institute for
Health Research***

Planning for a cohort study to investigate the impact and management of influenza in pregnancy in a future pandemic

Marian Knight,^{1*} Peter Brocklehurst,² Pat O'Brien,² Maria A Quigley¹ and Jennifer J Kurinczuk¹

¹National Perinatal Epidemiology Unit, University of Oxford, Oxford, UK

²Institute for Women's Health, University College London, London, UK

*Corresponding author

Declared competing interests of authors: Peter Brocklehurst reports personal fees from Oxford Analytica; grants from the National Institute for Health and Care Excellence outside the submitted work; and that he is chairperson of the National Institute for Health Research Health Technology Assessment Maternal, Neonatal and Child Health Panel (MNCH).

Published March 2015

DOI: 10.3310/hsdr03060

This report should be referenced as follows:

Knight M, Brocklehurst P, O'Brien P, Quigley MA, Kurinczuk JJ. Planning for a cohort study to investigate the impact and management of influenza in pregnancy in a future pandemic. *Health Serv Deliv Res* 2015;**3**(6).

Health Services and Delivery Research

ISSN 2050-4349 (Print)

ISSN 2050-4357 (Online)

This journal is a member of and subscribes to the principles of the Committee on Publication Ethics (COPE) (www.publicationethics.org/).

Editorial contact: nihredit@southampton.ac.uk

The full HS&DR archive is freely available to view online at www.journalslibrary.nihr.ac.uk/hsdr. Print-on-demand copies can be purchased from the report pages of the NIHR Journals Library website: www.journalslibrary.nihr.ac.uk

Criteria for inclusion in the *Health Services and Delivery Research* journal

Reports are published in *Health Services and Delivery Research* (HS&DR) if (1) they have resulted from work for the HS&DR programme or programmes which preceded the HS&DR programme, and (2) they are of a sufficiently high scientific quality as assessed by the reviewers and editors.

HS&DR programme

The Health Services and Delivery Research (HS&DR) programme, part of the National Institute for Health Research (NIHR), was established to fund a broad range of research. It combines the strengths and contributions of two previous NIHR research programmes: the Health Services Research (HSR) programme and the Service Delivery and Organisation (SDO) programme, which were merged in January 2012.

The HS&DR programme aims to produce rigorous and relevant evidence on the quality, access and organisation of health services including costs and outcomes, as well as research on implementation. The programme will enhance the strategic focus on research that matters to the NHS and is keen to support ambitious evaluative research to improve health services.

For more information about the HS&DR programme please visit the website: <http://www.nets.nihr.ac.uk/programmes/hsdr>

This report

The research reported in this issue of the journal was funded by the Health Services and Delivery Research programme as project number 11/46/12. The contractual start date was in June 2012. The report detailing the set up phase and initial outcomes began editorial review in December 2014 and was accepted for publication in February 2015. The authors have been wholly responsible for all data collection, analysis and interpretation, and for writing up their work. The *Health Services and Delivery Research* editors and production house have tried to ensure the accuracy of the authors' report and would like to thank the reviewers for their constructive comments on the final report document. However, they do not accept liability for damages or losses arising from material published in this report. Should the study progress further, the full report will be published in the *Health Services and Delivery Research* journal.

This report presents independent research funded by the National Institute for Health Research (NIHR). The views and opinions expressed by authors in this publication are those of the authors and do not necessarily reflect those of the NHS, the NIHR, NETSCC, the HS&DR programme or the Department of Health. If there are verbatim quotations included in this publication the views and opinions expressed by the interviewees are those of the interviewees and do not necessarily reflect those of the authors, those of the NHS, the NIHR, NETSCC, the HS&DR programme or the Department of Health.

© Queen's Printer and Controller of HMSO 2015. This work was produced by Knight *et al.* under the terms of a commissioning contract issued by the Secretary of State for Health. This issue may be freely reproduced for the purposes of private research and study and extracts (or indeed, the full report) may be included in professional journals provided that suitable acknowledgement is made and the reproduction is not associated with any form of advertising. Applications for commercial reproduction should be addressed to: NIHR Journals Library, National Institute for Health Research, Evaluation, Trials and Studies Coordinating Centre, Alpha House, University of Southampton Science Park, Southampton SO16 7NS, UK.

Published by the NIHR Journals Library (www.journalslibrary.nihr.ac.uk), produced by Prepress Projects Ltd, Perth, Scotland (www.prepress-projects.co.uk).

Health Services and Delivery Research Editor-in-Chief

Professor Ray Fitzpatrick Professor of Public Health and Primary Care, University of Oxford, UK

NIHR Journals Library Editor-in-Chief

Professor Tom Walley Director, NIHR Evaluation, Trials and Studies and Director of the HTA Programme, UK

NIHR Journals Library Editors

Professor Ken Stein Chair of HTA Editorial Board and Professor of Public Health, University of Exeter Medical School, UK

Professor Andree Le May Chair of NIHR Journals Library Editorial Group (EME, HS&DR, PGfAR, PHR journals)

Dr Martin Ashton-Key Consultant in Public Health Medicine/Consultant Advisor, NETSCC, UK

Professor Matthias Beck Chair in Public Sector Management and Subject Leader (Management Group), Queen's University Management School, Queen's University Belfast, UK

Professor Aileen Clarke Professor of Public Health and Health Services Research, Warwick Medical School, University of Warwick, UK

Dr Tessa Crilly Director, Crystal Blue Consulting Ltd, UK

Dr Peter Davidson Director of NETSCC, HTA, UK

Ms Tara Lamont Scientific Advisor, NETSCC, UK

Professor Elaine McColl Director, Newcastle Clinical Trials Unit, Institute of Health and Society, Newcastle University, UK

Professor William McGuire Professor of Child Health, Hull York Medical School, University of York, UK

Professor Geoffrey Meads Professor of Health Sciences Research, Faculty of Education, University of Winchester, UK

Professor John Powell Consultant Clinical Adviser, National Institute for Health and Care Excellence (NICE), UK

Professor James Raftery Professor of Health Technology Assessment, Wessex Institute, Faculty of Medicine, University of Southampton, UK

Dr Rob Riemsma Reviews Manager, Kleijnen Systematic Reviews Ltd, UK

Professor Helen Roberts Professor of Child Health Research, UCL Institute of Child Health, UK

Professor Helen Snooks Professor of Health Services Research, Institute of Life Science, College of Medicine, Swansea University, UK

Please visit the website for a list of members of the NIHR Journals Library Board:
www.journalslibrary.nihr.ac.uk/about/editors

Editorial contact: nihredit@southampton.ac.uk

Abstract

Planning for a cohort study to investigate the impact and management of influenza in pregnancy in a future pandemic

Marian Knight,^{1*} Peter Brocklehurst,² Pat O'Brien,² Maria A Quigley¹ and Jennifer J Kurinczuk¹

¹National Perinatal Epidemiology Unit, University of Oxford, Oxford, UK

²Institute for Women's Health, University College London, London, UK

*Corresponding author marian.knight@npeu.ox.ac.uk

Background: Evidence from the 2009 A/H1N1 influenza pandemic demonstrated that pregnant women are particularly vulnerable to infection and at an increased risk of death. Active data collection through the UK Obstetric Surveillance System (UKOSS) about women admitted to hospital during the 2009 A/H1N1 pandemic was used to inform ongoing clinical guidance regarding the use of antiviral treatment for pregnant women and demonstrated that, in addition to an increased risk of maternal morbidity, influenza infection in pregnancy is associated with poor perinatal outcomes, including an increased risk of stillbirth and preterm birth. This evidence influenced the decision to offer routine influenza immunisation to pregnant women. Even in a non-epidemic period, pregnant women continue to die from influenza.

Objective: To establish, and then to put into hibernation, the study mechanisms needed to mount a rapid investigation of the impact of pandemic influenza in pregnancy in the event of a newly emerging pandemic strain.

Design: A new UKOSS cohort study was designed, based on the 2009–10 study, and following consultation with the Pandemic Flu Planning Group at the Royal College of Obstetricians and Gynaecologists and the UKOSS Steering Committee, to identify potential previously unanswered questions.

Setting: UK maternity units.

Participants: All pregnant women admitted to hospital with influenza in a future pandemic.

Main outcome measures: Management of pregnant women with influenza infection, intervention rates, treatment and pregnancy outcome for both the mother and fetus.

Results: The study was designed and approved by the UKOSS Steering Committee and then placed into hibernation for activation in the event of an influenza pandemic.

Conclusions: Pregnant women, as a result of their changed immunological status, appear to be particularly susceptible to infection, including from influenza. The existence of the UKOSS enabled us to rapidly mount a study of pregnant women who were hospitalised with 2009 A/H1N1 influenza. Minor modifications to incorporate previously unanswered questions and our previous study enabled us to design, and then put into hibernation, a new study ready to investigate the impact and management of influenza in pregnancy, which is poised for activation in the event of a newly emerging pandemic strain. This will enable real-time data to be available on which to base rapid changes in clinical management as the as-yet-unforeseen pandemic unfolds. In the event of an influenza pandemic the study will be available to be immediately activated following expedited regulatory approvals.

Trial registration: Current Controlled Trials ISRCTN44137563.

Funding: The National Institute for Health Research Health Services and Delivery Research programme.

Contents

| | |
|---|-----------|
| List of abbreviations | ix |
| Plain English summary | xi |
| Chapter 1 Background | 1 |
| Chapter 2 Study objective | 3 |
| Chapter 3 Methods and results | 5 |
| Chapter 4 Discussion | 7 |
| Chapter 5 Conclusions | 9 |
| Acknowledgements | 11 |
| References | 13 |
| Appendix 1 Data collection forms | 15 |
| Appendix 2 Study protocol | 35 |

List of abbreviations

| | | | |
|------|--------------------------------------|-------|-------------------------------------|
| aOR | adjusted odds ratio | ECMO | extracorporeal membrane oxygenation |
| BPSU | British Paediatric Surveillance Unit | UKOSS | UK Obstetric Surveillance System |
| CI | confidence interval | | |
| CPRD | Clinical Practice Research Datalink | | |

Plain English summary

Pregnant women have an increased chance of developing infections and becoming seriously ill; this includes being more likely to catch influenza (flu). During the 'swine flu' pandemic of 2009–10 we carried out a study to investigate the effect of flu on pregnant women using a system called the UK Obstetric Surveillance System (UKOSS). We set up UKOSS in 2005 to study serious rare conditions affecting pregnant women, so, when 'swine flu' was declared as a pandemic, we rapidly set in place a study to look at its effects in pregnancy. We found that pregnant women had an increased risk of becoming severely ill and were also more likely to have a stillborn or premature baby. The results from the study were used to make changes to the treatment offered to pregnant women infected with 'swine flu' and also led to the recommendation that all pregnant women should receive vaccination against seasonal flu routinely – this is the flu that occurs every year in winter time. We know that, even though there is not a flu pandemic currently, a small number of pregnant women have nevertheless died from seasonal flu.

Using our experience from the 'swine flu' pandemic we have set everything in place so that if there is another flu pandemic we can rapidly activate a new UKOSS study to investigate what happens. This will provide the necessary information, once again, to enable treatment and vaccination provided during pregnancy to be tailored to the particular needs of pregnant women.

Chapter 1 Background

Evidence from the last influenza pandemic (2009 A/H1N1) showed that pregnant women were particularly vulnerable to severe complications of infection,^{1–5} resulting in increases in both maternal and perinatal mortality.^{5–7} Further investigations, including in the UK,⁵ highlighted specific groups of women who were at higher risk of morbidity after 2009 A/H1N1 infection in pregnancy. Factors associated with admission to hospital with 2009 A/H1N1 in pregnancy included maternal obesity, asthma, multiparity, multiple pregnancy, black or other minority group ethnicity, and smoking among women aged < 25 years.^{1,3,5} Women have continued to die from influenza associated with pregnancy seasonally since the pandemic.⁸

Active data collection on pregnant women at the time of admission to hospital with confirmed 2009 A/H1N1 influenza, as well as identifying particular subgroups who were at risk of the severest disease and hence a particular target for preventative interventions, also pinpointed aspects of management that resulted in improved outcomes for women, including the importance of early antiviral treatment.⁵ In the 2009 pandemic, monthly analysis of emerging data was used to inform ongoing clinical guidance. Admission to an intensive care unit, taken as a proxy for severe morbidity, was also associated with delay in starting treatment with antiviral medication (> 2 days after the onset of symptoms) in other population studies.^{1,3,4,9} This has been confirmed in more recent meta-analyses of observational data.¹⁰

Many studies of 2009 A/H1N1 in pregnancy reported very incomplete outcomes or outcomes for only a subset of severely affected women.^{1,3,4,9,11,12} Half of the initial published outcome rates were calculated using subsamples of < 50% of the study cohort. The majority of studies did not follow up women to the end of their pregnancy^{3,4,9,11} or, in some cases, the follow-up time was too short to collect outcome information on women infected at all gestations.^{3,6} This approach will have biased any results towards reporting preterm births and is likely to have led to overly pessimistic results.

The UK study¹³ followed up 94% of the original study cohort ($n = 256$) and demonstrated that poor perinatal outcomes, in addition to poor maternal outcomes, were associated with 2009 A/H1N1 influenza infection in pregnancy. The risks of poor outcomes persisted after adjustment for maternal and pregnancy characteristics that were known to be associated with poor perinatal outcomes. The study¹³ suggested an increased risk of perinatal mortality in women infected with 2009 A/H1N1 compared with the general population {perinatal mortality rate 39 per 1000 total births [95% confidence interval (CI) 19 to 71 per 1000 total births] compared with 7 per 1000 total births (95% CI 3 to 13 per 1000 total births), adjusted odds ratio (aOR) = 5.7; 95% CI 2.2 to 15.1}. This was explained largely by an increased risk of stillbirth, although the neonatal death rate was also significantly higher than the national rate (odds ratio 3.8, 95% CI 1.2 to 11.8). The study strengthened the evidence for offering routine immunisation to pregnant women and informed subsequent guidance in Europe.¹⁴ More recent cohort studies using routinely collected data have identified similar findings.¹⁵

In addition to the mortality risk, infants were at greater risk of preterm birth (aOR 4.0, 95% CI 2.7 to 5.9);¹³ this was a mixture of both iatrogenic and spontaneous preterm delivery. The data suggest that women with 2009 A/H1N1 infection who gave birth preterm were more likely to have been infected in their third trimester. Secondary infection with bacterial pneumonia played an important role in preterm delivery in this 2009–10 cohort; secondary pneumonia was also associated with preterm birth in women with pandemic influenza in 1919.¹⁶ In the UK data, the risk of preterm birth associated with 2009 A/H1N1 infection persisted even after accounting for the role of secondary pneumonia, which suggested that the excess risk could not be explained by this factor alone.¹³

Almost half of the infants delivered preterm were delivered early because of maternal compromise. Women are typically delivered during the third trimester in order to aid mechanical ventilation. However, emerging evidence suggests that when women are referred for management with extracorporeal membrane oxygenation (ECMO), in the absence of fetal compromise there may not be an indication to deliver the fetus early.¹⁷ This is noted particularly at gestations of < 30–32 weeks, when the size of the uterus is unlikely to affect mechanical ventilation. Increased availability and use of ECMO may therefore have the potential to impact positively on infant outcomes, even in the presence of maternal critical illness, including not only mortality, but also long-term morbidity, care costs and emotional stress for parents.

Overall, these studies show a clear increase in risk of poor maternal and pregnancy outcomes in women infected with 2009 A/H1N1 influenza. Importantly, immunisation against 2009 A/H1N1 influenza for pregnant women was shown to have a significant impact on health outcomes for both mother and baby.¹⁴ Almost half of the preterm births were due to early delivery for maternal compromise, indicating that the health of pregnant women, which is improved with rapid treatment with antiviral agents, is an important public health priority in future waves of this and other influenza pandemics.

In a future pandemic, however, these observed patterns may differ, and a rapid study of this susceptible group will be important to inform both ongoing preventative and management policies. In the early period of the 2009 A/H1N1 pandemic, agencies took time to co-ordinate and agree guidance. There was thus a delay before any guidance on the care of pregnant or postpartum women with A/H1N1 was issued, and delays in updating this guidance. A rapid study would minimise these delays, and allow prompt dissemination of new learning. In particular, a number of clinical questions remain unresolved, which would be informed by a future study. Of note, it is important to establish whether or not pregnancy can be successfully continued in women managed with ECMO. Limited evidence currently exists as to whether or not pregnancy can be continued during and after ECMO treatment,¹⁷ but further data are needed to fully inform management guidance and also service planning. Additionally, it will be important to investigate whether or not the seasonal influenza immunisation current at the time of the pandemic protects women against pandemic influenza. Immunisation policy changed subsequent to the most recent pandemic, such that pregnant women are now offered seasonal influenza immunisation as part of a routine programme.¹⁸ However, uptake in pregnancy remains relatively low; at the time of writing, vaccine coverage is about 25% in pregnant women with no other complications.¹⁹ In a new pandemic situation, establishing whether or not pregnant women have any protection from existing vaccines, as well as establishing reasons for non-immunisation, will inform immediate public health actions.

Chapter 2 Study objective

The objective of the project reported here was to establish, and then to put into hibernation, the study mechanisms and materials needed to mount a rapid investigation of the impact of pandemic influenza in pregnancy in the event of a newly emerging pandemic strain. This report thus describes the study planning and set-up phase but, as a further pandemic has not yet occurred, the study does not include any new data on influenza in pregnancy.

Chapter 3 Methods and results

The UK Obstetric Surveillance System (UKOSS) is a research platform to enable the study of rare or severe complications in pregnancy.²⁰ Reporting clinicians, who include midwives, anaesthetists and obstetricians, are located in all 211 consultant-led maternity units in the UK. The conditions studied using the system change over time; cases that are currently under study are reported monthly on a report card, which is returned to the central UKOSS administration team in Oxford. The monthly card is also used to update contact details when reporting staff change, so that the list of reporters is kept continually up to date. When the reporting clinician indicates on the monthly card that they have a new case to report, the UKOSS administration team will then mail out a specific data collection form. The data collection forms, which are individually designed for each condition-specific study, contain information about a woman's sociodemographic, medical and pregnancy characteristics, together with information about the management of her condition and the outcomes of pregnancy for both her and her baby. All of the information collected is anonymous and thus can be collected without requiring women's consent.

The UKOSS was used to conduct the UK study of pregnant women who were hospitalised with 2009 A/H1N1 influenza in the second wave of the pandemic in late 2009.¹³ The normal processes of UKOSS were adapted to allow online reporting of cases and rapid return of electronic data collection forms. Data were analysed monthly and used to inform ongoing clinical guidance.

In order to prepare a new study for a potential future pandemic of influenza, the data from the previous study were examined, and the lead for the Pandemic Flu Planning Group at the Royal College of Obstetricians and Gynaecologists, together with the UKOSS Steering Committee, which includes both public and professional members, was consulted about potential unanswered questions or issues that might be pertinent to pregnant women in future pandemics. On the basis of this consultation, the data collection form that had been used to collect information in the 2009 pandemic was modified. New questions were added, particularly on the use of respiratory support, including ECMO and the timing of delivery in relation to the use of respiratory support. The data collection forms for the Influenza A/H1N1 Pandemic Study and the new study are included in *Appendix 1*.

The relevant regulatory approvals were obtained, a database was programmed together with a web portal for reporting cases, and the study was hibernated pending activation in the event of a pandemic. The authors were provided with a key contact at the funding body, who would advise activation in the event of a pandemic.

Chapter 4 Discussion

The UKOSS is a research platform that allows for rapid activation of studies of pregnancy complications. The set-up of this new study required very minor modifications to the data collection system that had been set up in 2009. If regulatory approvals are facilitated, the UKOSS could be mobilised rapidly to study pregnancy outcomes of any new emerging infection;¹³ we estimate that a study could be implemented within 2–4 weeks of approvals being obtained. Advance approval, prior to any new infection emerging, would clearly allow for even more rapid activation.

It is important to note that the UKOSS is a maternity hospital-based system; therefore, it is likely to capture only severe pregnancy complications and outcomes, or those complications and outcomes that occur during the same hospital admission as delivery. It will not, for example, necessarily identify women who have had an early pregnancy loss or termination as a result of influenza or other emerging infection, as, even if they were hospitalised, they would not necessarily be brought to the attention of maternity services. In the event of future infections, it would therefore be beneficial also to collect information in general practice. This was undertaken in the UK to a limited extent during the 2009 A/H1N1 influenza pandemic;⁵ however, it proved much more difficult to obtain information from the community than from hospital owing to the large number of individual reporting organisations involved. Other health systems have used routine data to identify early pregnancy complications of 2009 A/H1N1 infection; it would be beneficial in the UK if routine systems, such as the Clinical Practice Research Datalink (CPRD), could be used on a rapid basis to identify such complications in the future. Additional data to be identified from general practice data could include these early pregnancy complications, as well as hospitalisations in settings other than maternity. Although the CPRD currently covers only a small proportion of UK general practices, if coverage is expanded, a comprehensive future study could include both a UKOSS study and a linked study using the CPRD to collect additional information about complications of influenza in pregnancy presenting in other settings.

Systems such as UKOSS now exist in several specialties. UKOSS was based on the model developed by the British Paediatric Surveillance Unit (BPSU),²¹ and the BPSU has been successfully used to conduct studies of emerging infections in the paediatric population, an example being new variant Creutzfeldt–Jakob disease.²² A new system has recently been set up, covering early pregnancy units – the UK Early Pregnancy Surveillance Service²³ – and this would be a possible route to obtaining information about severe pregnancy complications as a result of infection in the first trimester. Other systems exist in other specialty areas, for example ophthalmology,²⁴ paediatric surgery²⁵ and neurology,²⁶ all of which could be used to investigate emerging public health threats on a rapid basis.

Robust identification of rare, but extremely severe, pregnancy complications in association with emerging infections such as pandemic influenza can be a challenge even on a national basis, as studies will have limited statistical power to identify such complications. The International Network of Obstetric Survey Systems²⁷ includes member countries across Europe and Australasia, all of whom operate systems that are similar to UKOSS. Rapid activation of a study across the entire network in a future pandemic would allow for rapid collection and collation of information on a large number of pregnancies, thus providing information to guide both prevention and management of infected pregnant women with the most efficiency.

It is important to note that information about the implications and outcomes of seasonal influenza in pregnancy is incomplete. The European Centre for Disease Prevention and Control technical report summarising the scientific advice on seasonal influenza vaccination of children and pregnant women¹⁴ identified significant gaps in the data from Europe on the burden of seasonal influenza in pregnant women, as well as data on vaccine effectiveness and safety. The majority of the limited data available comes from North America. The question therefore arises as to whether or not this study should be activated in the absence of a pandemic in order to provide those data on seasonal influenza in pregnancy for the UK. Robust UK data may further help to counsel women about the risks and benefits of influenza vaccination, as well as aiding economic evaluation.

Chapter 5 Conclusions

Pregnant women, as a result of their altered immune system and physiology, may be uniquely susceptible to not only influenza, but also other emerging infections. We were able to use the UKOSS to conduct a rapid study of pregnant women who were hospitalised with 2009 influenza A/H1N1. Only minor modifications were required to develop a study to investigate the impact and management of influenza in pregnancy ready for activation in the event of a future pandemic. The UKOSS may be used for rapid studies of any emerging infections in pregnancy; the conduct of studies across an international network may allow for even more rapid information to guide advice and management in pregnancy.

Acknowledgements

The authors would like to thank the members of the UKOSS Steering Committee for their contribution to the study.

Contribution of authors

Marian Knight (Professor of Maternal and Child Population Health) designed the study and wrote the first draft of the manuscript.

Peter Brocklehurst (Professor of Women's Health) assisted with the design of the study and revised the manuscript.

Pat O'Brien (Consultant Obstetrician) assisted with the design of the study and revised the manuscript.

Maria A Quigley (Professor of Statistical Epidemiology) assisted with the design of the study and revised the manuscript.

Jennifer J Kurinczuk (Professor of Perinatal Epidemiology) assisted with the design of the study and revised the manuscript.

References

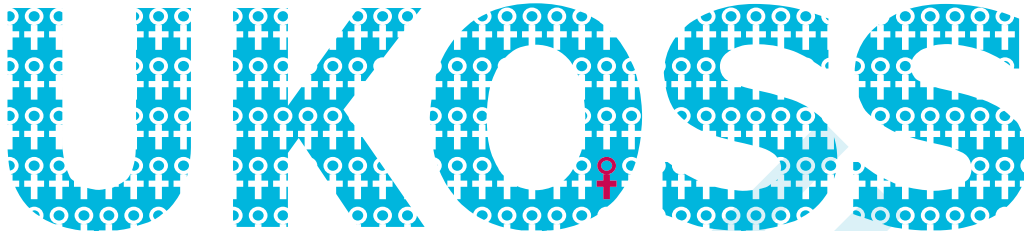
1. ANZIC Influenza Investigators and Australasian Maternity Outcomes Surveillance System. Critical illness due to 2009 A/H1N1 influenza in pregnant and postpartum women: population based cohort study. *BMJ* 2010;**340**:c1279. <http://dx.doi.org/10.1136/bmj.c1279>
2. Jamieson DJ, Honein MA, Rasmussen SA, Williams JL, Swerdlow DL, Biggerstaff MS, *et al.* H1N1 2009 influenza virus infection during pregnancy in the USA. *Lancet* 2009;**374**:451–8. [http://dx.doi.org/10.1016/S0140-6736\(09\)61304-0](http://dx.doi.org/10.1016/S0140-6736(09)61304-0)
3. Louie JK, Acosta M, Jamieson DJ, Honein MA. Severe 2009 H1N1 influenza in pregnant and postpartum women in California. *N Engl J Med* 2010;**362**:27–35. <http://dx.doi.org/10.1056/NEJMoa0910444>
4. Siston AM, Rasmussen SA, Honein MA, Fry AM, Seib K, Callaghan WM, *et al.* Pandemic 2009 influenza A(H1N1) virus illness among pregnant women in the United States. *JAMA* 2010;**303**:1517–25. <http://dx.doi.org/10.1001/jama.2010.479>
5. Yates L, Pierce M, Stephens S, Mill AC, Spark P, Kurinczuk JJ, *et al.* Influenza A/H1N1v in pregnancy: an investigation of the characteristics and management of affected women and the relationship to pregnancy outcomes for mother and infant. *Health Technol Assess* 2010;**14**(34). <http://dx.doi.org/10.3310/hta14340-02>
6. Donaldson LJ, Rutter PD, Ellis BM, Greaves FE, Mytton OT, Pebody RG, *et al.* Mortality from pandemic A/H1N1 2009 influenza in England: public health surveillance study. *BMJ* 2009;**339**:b5213. <http://dx.doi.org/10.1136/bmj.b5213>
7. Pierce M, Kurinczuk JJ, Spark P, Brocklehurst P, Knight M, UKOSS. Perinatal outcomes after maternal 2009/H1N1 infection: national cohort study. *BMJ* 2011;**342**:d3214. <http://dx.doi.org/10.1136/bmj.d3214>
8. Knight M, Kenyon S, Brocklehurst P, Neilson J, Shakespeare J, Kurinczuk J, *et al.* *Saving Lives, Improving Mothers' Care: Lessons Learned to Inform Future Maternity Care from the UK and Ireland Confidential Enquiries into Maternal Deaths and Morbidity 2009–12*. Oxford: National Perinatal Epidemiology Unit, University of Oxford; 2014.
9. Creanga AA, Johnson TF, Graitcer SB, Hartman LK, Al-Samarrai T, Schwarz AG, *et al.* Severity of 2009 pandemic influenza A (H1N1) virus infection in pregnant women. *Obstet Gynecol* 2010;**115**:717–26. <http://dx.doi.org/10.1097/AOG.0b013e3181d57947>
10. Muthuri SG, Venkatesan S, Myles PR, Leonardi-Bee J, Al Khuwaitir TS, Al Mamun A, *et al.* Effectiveness of neuraminidase inhibitors in reducing mortality in patients admitted to hospital with influenza A H1N1pdm09 virus infection: a meta-analysis of individual participant data. *Lancet Respir Med* 2014;**2**:395–404. [http://dx.doi.org/10.1016/S2213-2600\(14\)70041-4](http://dx.doi.org/10.1016/S2213-2600(14)70041-4)
11. Hewagama S, Walker SP, Stuart RL, Gordon C, Johnson PD, Friedman ND, *et al.* 2009 H1N1 influenza A and pregnancy outcomes in Victoria, Australia. *Clin Infect Dis* 2010;**50**:686–90. <http://dx.doi.org/10.1086/650460>
12. Dubar G, Azria E, Tesnière A, Dupont H, Le Ray C, Baugnon T, *et al.* French experience of 2009 A/H1N1v influenza in pregnant women. *PLOS ONE* 2010;**5**:e13112. <http://dx.doi.org/10.1371/journal.pone.0013112>
13. Knight M, Lindquist A. The UK Obstetric Surveillance System: impact on patient safety. *Best Pract Res Clin Obstet Gynaecol* 2013;**27**:621–30. <http://dx.doi.org/10.1016/j.bpobgyn.2013.03.002>

14. European Centre for Disease Prevention and Control (ECDC). *ECDC Scientific Advice on Seasonal Influenza Vaccination of Children and Pregnant Women*. Stockholm: ECDC; 2012.
15. Haberg SE, Trogstad L, Gunnes N, Wilcox AJ, Gjessing HK, Samuelsen SO, *et al*. Risk of fetal death after pandemic influenza virus infection or vaccination. *N Engl J Med* 2013;**368**:333–40. <http://dx.doi.org/10.1056/NEJMoa1207210>
16. Harris JW. Influenza occurring in pregnant women. *JAMA* 1919;**72**:978–80. <http://dx.doi.org/10.1001/jama.1919.02610140008002>
17. Nair P, Davies AR, Beca J, Bellomo R, Ellwood D, Forrest P, *et al*. Extracorporeal membrane oxygenation for severe ARDS in pregnant and postpartum women during the 2009 H1N1 pandemic. *Intensive Care Med* 2011;**37**:648–54. <http://dx.doi.org/10.1007/s00134-011-2138-z>
18. Public Health England. *Immunisation Against Infectious Disease 2014*. URL: www.gov.uk/government/collections/immunisation-against-infectious-disease-the-green-book (accessed 2 July 2014).
19. Public Health England. *Influenza Vaccination Uptake Monitoring on Behalf of the Department of Health*; 2014. URL: www.hpa.org.uk/web/HPAweb&HPAwebStandard/HPAweb_C/1195733756886#r4 (accessed 2 July 2014).
20. Knight M, Kurinczuk JJ, Tuffnell D, Brocklehurst P. The UK Obstetric Surveillance System for rare disorders of pregnancy. *BJOG* 2005;**112**:263–5. <http://dx.doi.org/10.1111/j.1471-0528.2005.00609.x>
21. Knowles RL, Friend H, Lynn R, Mitchell S, Michie C, Ihekweazu C, *et al*. Surveillance of rare diseases: a public health evaluation of the British Paediatric Surveillance Unit. *J Public Health* 2012;**34**:279–86. <http://dx.doi.org/10.1093/pubmed/fdr058>
22. Verity C, Winstone AM, Stellitano L, Will R, Nicoll A. The epidemiology of progressive intellectual and neurological deterioration in childhood. *Arch Dis Child* 2010;**95**:361–4. <http://dx.doi.org/10.1136/adc.2009.173419>
23. Harb HM, Knight M, Jurkovic D, Bottomley C, Overton C, Shehmar M, *et al*. UKEPSS: The UK Early Pregnancy Surveillance Service for uncommon disorders of early pregnancy and acute gynaecology. *Obstet Gynaecol* 2014;**16**:226–7. <http://dx.doi.org/10.1111/tog.12126>
24. Foot B, Stanford M, Rahi J, Thompson J, British Ophthalmological Surveillance Unit Steering Committee. The British Ophthalmological Surveillance Unit: an evaluation of the first 3 years. *Eye* 2003;**17**:9–15. <http://dx.doi.org/10.1038/sj.eye.6700233>
25. The British Association of Paediatric Surgeons Congenital Anomalies Surveillance System (BAPS-CASS). *BAPS-CASS*; 2006. URL: www.npeu.ox.ac.uk/baps-cass (accessed 3 December 2014).
26. British Neurological Surveillance Unit (BNSU). *BNSU*; 2014. URL: www.theabn.org/what-we-do/bnsu.html (accessed 3 December 2014).
27. Knight M and The International Network of Obstetric Survey Systems (INOSS). The International Network of Obstetric Survey Systems (INOSS): benefits of multi-country studies of severe and uncommon maternal morbidities. *Acta Obstet Gynecol Scand* 2014;**93**:127–31. <http://dx.doi.org/10.1111/aogs.12316>

Appendix 1 Data collection forms

Appendix 1.1 UKOSS 2009 A/H1N1 Pandemic Influenza Study data collection form

ID Number: _____



UK Obstetric Surveillance System

Influenza Study 04/09

Data Collection Form - CASE

**Please report all pregnant women admitted on or after 1st September 2009
and before 1st February 2010**

Case Definition:

Any woman admitted to hospital with confirmed H1N1v influenza infection in pregnancy.

Please return the completed form to:

UKOSS
National Perinatal Epidemiology Unit
University of Oxford
Old Road Campus
Oxford
OX3 7LF



Royal College of
Obstetricians and
Gynaecologists

Fax: 01865 289701
Phone: 01865 289714

Case reported in: _____



Instructions

1. Please do not enter any personally identifiable information (e.g. name, address or hospital number) on this form.
2. Please record the ID number from the front of this form against the woman's name on the Clinician's Section of the blue card retained in the UKOSS folder.
3. Fill in the form using the information available in the woman's case notes.
4. Tick the boxes as appropriate. If you require any additional space to answer a question please use the space provided in section 7.
5. Please complete all dates in the format DD/MM/YY, and all times using the 24hr clock e.g. 18.37
6. If codes or examples are required, some lists (not exhaustive) are included on the back page of the form.
7. If the woman has not yet delivered, please complete the form as far as you are able, excluding delivery and outcome information, and return to the UKOSS Administrator. We will send these sections again for you to complete two weeks after the woman's expected date of delivery.
8. **If you do not know the answers to some questions, please indicate this in section 7.**
9. If you encounter any problems with completing the form please contact the UKOSS Administrator or use the space in section 7 to describe the problem.

Section 1: Woman's details

- 1.1 Year of birth**
- 1.2 Ethnic group^{1*}** (enter code, please see back cover for guidance)
- 1.3 Marital status** single married cohabiting
- 1.4 Was the woman in paid employment at booking?** Yes No
If Yes, what is her occupation _____
If No, what is her partner's (if any) occupation _____
- 1.5 Height at booking** cm
- 1.6 Weight at booking** . kg
- 1.7 Smoking status** never gave up prior to pregnancy
 current gave up during pregnancy

Section 2: Previous Obstetric History

- 2.1 Gravidity**
- Number of previous completed pregnancies beyond 24 weeks
- Number of previous pregnancies less than 24 weeks
- If no previous pregnancies, please go to section 3**

*For guidance please see back cover

2.2 Did the woman have any previous pregnancy problems?^{2*}

Yes No

If Yes, please specify _____

Section 3: Previous Medical History

3.1 Does the woman have asthma requiring regular inhaled or oral steroids? Yes No

3.2 Has the woman had any other previous or pre-existing medical problems?^{3*} Yes No

If Yes, please specify _____

3.3 Has the woman been immunised against H1N1v? Yes No

If Yes, please give dates immunised

/ /

/ /

Section 4: This Pregnancy

4.1 Final Estimated Date of Delivery (EDD)^{4*} / /

4.2 Was this pregnancy a multiple pregnancy? Yes No

If Yes, specify number of fetuses

4.3 Were there problems in this pregnancy?^{2*} Yes No

If Yes, please specify _____

4.4 Was the woman admitted to hospital? Yes No

If Yes, please give date of admission / /

Diagnosis of Influenza A H1N1v

4.5 Please indicate presenting symptoms and date of onset in the table below

| Symptom | Tick if Yes | If Yes, give date of onset |
|--------------------|--------------------------|---|
| Fever | <input type="checkbox"/> | <input type="text"/> <input type="text"/> / <input type="text"/> <input type="text"/> / <input type="text"/> <input type="text"/> |
| Cough | <input type="checkbox"/> | <input type="text"/> <input type="text"/> / <input type="text"/> <input type="text"/> / <input type="text"/> <input type="text"/> |
| Sore throat | <input type="checkbox"/> | <input type="text"/> <input type="text"/> / <input type="text"/> <input type="text"/> / <input type="text"/> <input type="text"/> |
| Headache | <input type="checkbox"/> | <input type="text"/> <input type="text"/> / <input type="text"/> <input type="text"/> / <input type="text"/> <input type="text"/> |
| Tiredness/lethargy | <input type="checkbox"/> | <input type="text"/> <input type="text"/> / <input type="text"/> <input type="text"/> / <input type="text"/> <input type="text"/> |
| Limb or joint pain | <input type="checkbox"/> | <input type="text"/> <input type="text"/> / <input type="text"/> <input type="text"/> / <input type="text"/> <input type="text"/> |
| Diarrhoea | <input type="checkbox"/> | <input type="text"/> <input type="text"/> / <input type="text"/> <input type="text"/> / <input type="text"/> <input type="text"/> |
| Breathlessness | <input type="checkbox"/> | <input type="text"/> <input type="text"/> / <input type="text"/> <input type="text"/> / <input type="text"/> <input type="text"/> |
| Vomiting | <input type="checkbox"/> | <input type="text"/> <input type="text"/> / <input type="text"/> <input type="text"/> / <input type="text"/> <input type="text"/> |
| Rhinorrhoea | <input type="checkbox"/> | <input type="text"/> <input type="text"/> / <input type="text"/> <input type="text"/> / <input type="text"/> <input type="text"/> |

*For guidance please see back cover

4.6 Has virological testing for H1N1v been carried out? Yes No

If Yes, did this confirm the diagnosis? Yes No

If Yes, please specify

Type identified _____

Sample source _____

Date of first positive test / /

If No, what was the final diagnosis? _____

4.7 Was this a clinical diagnosis only? Yes No

Therapy

4.8 Were anti-viral drugs used for H1N1v infection? Yes No

If Yes, please specify

First Agent

Second Agent

Agent used _____

Date treatment started / /

Date treatment stopped / /

Dose _____

Route _____

Schedule (e.g. bd) _____

Adverse effects _____

4.9 Were other drugs used during pregnancy? Yes No

If Yes, please specify _____

4.10 Were steroids given to enhance fetal lung maturation? Yes No

If Yes, please specify

First Agent

Second Agent

Agent used _____

Date given / /

Dose _____

4.11 Did this woman receive ECMO? Yes No

4.12 Was this woman transferred to another hospital? Yes No

If Yes, please indicate name of hospital _____

*For guidance please see back cover

Section 6: Outcomes**Section 6a: Woman****6a.1 Was the woman admitted to ITU?** Yes No

If Yes, please specify

Duration of stay daysOr Tick if woman is still in ITU Or Tick if woman was transferred to another hospital **6a.2 Did any other major maternal morbidity occur?^{6*}** Yes No

If Yes, please specify _____

6a.3 What was the woman's date of discharge after her admission for flu? / / **6a.4 Did the woman die?** Yes No If Yes, please specify date and time of death / / : 24hr

What was the primary cause of death as stated on the death certificate?

(Please state if not known.) _____

Section 6b: Section 6b: Infant 1**NB:** If more than one infant, for each additional infant, please photocopy the infant section of the form (before filling it in) and attach extra sheet(s) or download additional forms from the website: www.npeu.ox.ac.uk/ukoss**6b.1 Date and time of delivery** / / : 24hr**6b.2 Mode of delivery**Spontaneous vaginal Ventouse Lift-out forceps Rotational forceps Breech Pre-labour caesarean section Caesarean section after onset of labour **6b.3 Birthweight** g**6b.4 Was the infant stillborn?** Yes No

If Yes, please go to section 7.

6b.5 5 min Apgar **6b.6 Was the infant admitted to the neonatal unit?** Yes No

If Yes, please specify

Duration of stay daysOr Tick if infant is still in neonatal unit Or Tick if infant was transferred to another hospital **6b.7 Did any other major infant complications occur?^{7*}** Yes No

If Yes, please specify _____

*For guidance please see back cover

Definitions

1. UK Census Coding for ethnic group

WHITE

01. British
02. Irish
03. Any other white background

MIXED

04. White and black Caribbean
05. White and black African
06. White and Asian
07. Any other mixed background

ASIAN OR ASIAN BRITISH

08. Indian
09. Pakistani
10. Bangladeshi
11. Any other Asian background

BLACK OR BLACK BRITISH

12. Caribbean
13. African
14. Any other black background

CHINESE OR OTHER ETHNIC GROUP

15. Chinese
16. Any other ethnic group

2. Previous or current pregnancy problems, including:

Thrombotic event
 Amniotic fluid embolism
 Eclampsia
 3 or more miscarriages
 Preterm birth or mid trimester loss
 Neonatal death
 Stillbirth
 Baby with a major congenital abnormality
 Small for gestational age (SGA) infant
 Large for gestational age (LGA) infant
 Infant requiring intensive care
 Puerperal psychosis
 Placenta praevia
 Gestational diabetes
 Significant placental abruption
 Post-partum haemorrhage requiring transfusion
 Surgical procedure in pregnancy
 Hyperemesis requiring admission
 Dehydration requiring admission
 Ovarian hyperstimulation syndrome
 Severe infection e.g. pyelonephritis

3. Previous or pre-existing maternal medical problems, including:

Cardiac disease (congenital or acquired)
 Renal disease
 Endocrine disorders e.g. hypo or hyperthyroidism
 Psychiatric disorders
 Haematological disorders e.g. sickle cell disease, diagnosed thrombophilia
 Inflammatory disorders e.g. inflammatory bowel disease
 Autoimmune diseases
 Cancer
 HIV

4. Estimated date of delivery (EDD):

Use the best estimate (ultrasound scan or date of last menstrual period) based on a 40 week gestation

5. RCA/RCOG/CEMACH/CNST Classification for urgency of caesarean section:

1. Immediate threat to life of woman or fetus
2. Maternal or fetal compromise which is not immediately life-threatening
3. Needing early delivery but no maternal or fetal compromise
4. At a time to suit the woman and maternity team

6. Major maternal medical complications, including:

Persistent vegetative state
 Cardiac arrest
 Cerebrovascular accident
 Adult respiratory distress syndrome
 Disseminated intravascular coagulopathy
 HELLP
 Pulmonary oedema
 Secondary infection e.g. pneumonia
 Renal failure
 Thrombotic event
 Septicaemia
 Required ventilation

7. Fetal/infant complications, including:

Respiratory distress syndrome
 Intraventricular haemorrhage
 Necrotising enterocolitis
 Neonatal encephalopathy
 Chronic lung disease
 Severe jaundice requiring phototherapy
 Major congenital anomaly
 Severe infection e.g. septicaemia, meningitis
 Exchange transfusion



UK Obstetric Surveillance System

H1N1v (“swine flu”) in Pregnancy

Case ID:

Thank you for reporting the above case to UKOSS.

Now please make a note of the following details to keep in the UKOSS folder in case of future queries.

Patient's name: _____

Patient's Hospital number: _____

Patient's year of birth: _____

EDD: _____

Case reported by: _____

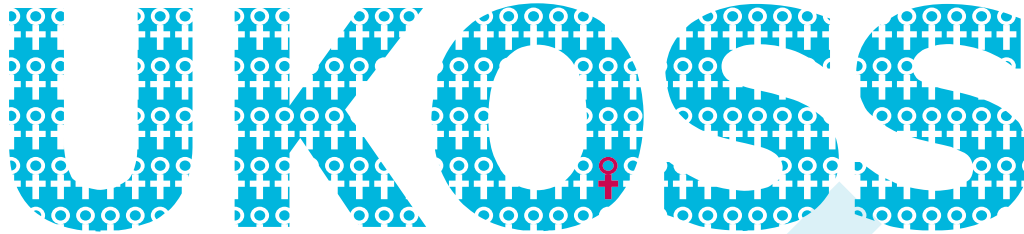
Date reported: _____

Please keep this sheet with these identifying details,
do not send them to UKOSS.

Return the rest of the form to the address given on the front.

Appendix 1.2 UKOSS new planned Pandemic Influenza Study data collection form

ID Number: _____



UK Obstetric Surveillance System

Influenza Study XX/XX

Data Collection Form - CASE

Please report all pregnant women admitted on or after 1st Xxxx XXXX

and before 1st Xxxx XXXX

Case Definition:

Any woman admitted to hospital with confirmed pandemic influenza infection in pregnancy.



Royal College of
Obstetricians
and Gynaecologists

Bringing to life the best
in women's health care

Please return the completed form to:

UKOSS
National Perinatal Epidemiology Unit
University of Oxford
Old Road Campus
Oxford
OX3 7LF
Fax: 01865 617775
Phone: 01865 289714

Case reported in: _____



Instructions

- Please do not enter any personally identifiable information (e.g. name, address or hospital number) on this form.
- Please record the ID number from the front of this form against the woman's name on the Clinician's Section of the blue card retained in the UKOSS folder.
- Fill in the form using the information available in the woman's case notes.
- Tick the boxes as appropriate. If you require any additional space to answer a question please use the space provided in section 7.
- Please complete all dates in the format DD/MM/YY, and all times using the 24hr clock e.g. 18.37
- If codes or examples are required, some lists (not exhaustive) are included on the back page of the form.
- If the woman has not yet delivered, please complete the form as far as you are able, excluding delivery and outcome information, and return to the UKOSS Administrator. We will send these sections again for you to complete two weeks after the woman's expected date of delivery.
- If you do not know the answers to some questions, please indicate this in section 7.**
- If you encounter any problems with completing the form please contact the UKOSS Administrator or use the space in section 7 to describe the problem.

Section 1: Woman's details

- 1.1 Year of birth**
- 1.2 Ethnic group^{1*}** (enter code, please see back cover for guidance)
- 1.3 Marital status** single married cohabiting
- 1.4 Was the woman in paid employment at booking?** Yes No
 If Yes, what is her occupation _____
 If No, what is her partner's (if any) occupation _____
- 1.5 Height at booking** cm
- 1.6 Weight at booking** kg
- 1.7 Smoking status** never gave up prior to pregnancy
 current gave up during pregnancy

Section 2: Previous Obstetric History

- 2.1 Gravity**
 Number of previous completed pregnancies beyond 24 weeks
 Number of previous pregnancies less than 24 weeks
 If no previous pregnancies, please go to section 3
- 2.2 Did the woman have any previous pregnancy problems?^{2*}** Yes No
 If Yes, please specify _____

*For guidance please see back cover

Section 3: Previous Medical History

3.1 Does the woman have asthma requiring regular inhaled or oral steroids? Yes No

3.2 Has the woman had any other previous or pre-existing medical problems?^{3*} Yes No

If Yes, please specify _____

3.3 Has the woman been immunised against pandemic influenza? Yes No

If Yes, please give:

Dates immunised

/ /

/ /

/ /

/ /

Was this seasonal influenza vaccine or pandemic-type vaccine?

Seasonal Pandemic

Seasonal Pandemic

Seasonal Pandemic

Seasonal Pandemic

If No, please state reasons for non-immunisation (*tick all that apply*) Not offered Not available

Contraindicated Safety concerns Woman's preference Not known

Section 4: This Pregnancy

4.1 Final Estimated Date of Delivery (EDD)^{4*} / /

4.2 Was this pregnancy a multiple pregnancy? Yes No

If Yes, specify number of fetuses

4.3 Were there problems in this pregnancy?^{2*} Yes No

If Yes, please specify _____

4.4 Was the woman admitted to hospital? Yes No

If Yes, please give date of admission / /

Diagnosis of Pandemic Influenza

4.5 Please indicate presenting symptoms and date of onset in the table below

| Symptom | Tick if Yes | If Yes, give date of onset |
|--------------------|--------------------------|---|
| Fever | <input type="checkbox"/> | <input type="text"/> <input type="text"/> / <input type="text"/> <input type="text"/> / <input type="text"/> <input type="text"/> |
| Cough | <input type="checkbox"/> | <input type="text"/> <input type="text"/> / <input type="text"/> <input type="text"/> / <input type="text"/> <input type="text"/> |
| Sore throat | <input type="checkbox"/> | <input type="text"/> <input type="text"/> / <input type="text"/> <input type="text"/> / <input type="text"/> <input type="text"/> |
| Headache | <input type="checkbox"/> | <input type="text"/> <input type="text"/> / <input type="text"/> <input type="text"/> / <input type="text"/> <input type="text"/> |
| Tiredness/lethargy | <input type="checkbox"/> | <input type="text"/> <input type="text"/> / <input type="text"/> <input type="text"/> / <input type="text"/> <input type="text"/> |
| Limb or joint pain | <input type="checkbox"/> | <input type="text"/> <input type="text"/> / <input type="text"/> <input type="text"/> / <input type="text"/> <input type="text"/> |
| Diarrhoea | <input type="checkbox"/> | <input type="text"/> <input type="text"/> / <input type="text"/> <input type="text"/> / <input type="text"/> <input type="text"/> |
| Breathlessness | <input type="checkbox"/> | <input type="text"/> <input type="text"/> / <input type="text"/> <input type="text"/> / <input type="text"/> <input type="text"/> |
| Vomiting | <input type="checkbox"/> | <input type="text"/> <input type="text"/> / <input type="text"/> <input type="text"/> / <input type="text"/> <input type="text"/> |
| Rhinorrhoea | <input type="checkbox"/> | <input type="text"/> <input type="text"/> / <input type="text"/> <input type="text"/> / <input type="text"/> <input type="text"/> |
| Flu-like symptoms | <input type="checkbox"/> | <input type="text"/> <input type="text"/> / <input type="text"/> <input type="text"/> / <input type="text"/> <input type="text"/> |

*For guidance please see back cover

4.6 Has virological testing for influenza been carried out? Yes No

If Yes, did this confirm the diagnosis? Yes No

If Yes, please specify

Type identified _____

Sample source _____

Date of first positive test

Were there any subsequent positive tests? Yes No

If Yes, please give date(s) of subsequent positive tests

1:

2:

If No, what was the final diagnosis? _____

4.7 Was this a clinical diagnosis only? Yes No

Therapy

4.8 Were anti-viral drugs used for influenza infection? Yes No

If Yes, please specify

| | First Agent | Second Agent |
|------------------------|---|---|
| Agent used | _____ | _____ |
| Date treatment started | <input type="text" value="DD"/> <input type="text" value="MM"/> <input type="text" value="YY"/> | <input type="text" value="DD"/> <input type="text" value="MM"/> <input type="text" value="YY"/> |
| Date treatment stopped | <input type="text" value="DD"/> <input type="text" value="MM"/> <input type="text" value="YY"/> | <input type="text" value="DD"/> <input type="text" value="MM"/> <input type="text" value="YY"/> |
| Dose | _____ | _____ |
| Route | _____ | _____ |
| Schedule (e.g. bd) | _____ | _____ |
| Adverse effects | _____ | _____ |

4.9 Were other drugs used during pregnancy? Yes No

If Yes, please specify _____

4.10 Were steroids given to enhance fetal lung maturation? Yes No

If Yes, please specify

| | First Agent | Second Agent |
|------------|---|---|
| Agent used | _____ | _____ |
| Date given | <input type="text" value="DD"/> <input type="text" value="MM"/> <input type="text" value="YY"/> | <input type="text" value="DD"/> <input type="text" value="MM"/> <input type="text" value="YY"/> |
| Dose | _____ | _____ |

4.11 Was this woman managed with extracorporeal membrane oxygenation (ECMO)? Yes No

If Yes, please indicate:

Date ECMO commenced

Name of ECMO centre _____

Was this woman delivered during her ECMO treatment? Yes No

If Yes, please give reason for delivery _____

*For guidance please see back cover

Section 5: Delivery

5.1 Did this woman have a miscarriage? Yes No

If Yes, please specify date

/ /

5.2 Did this woman have a termination of pregnancy? Yes No

If Yes, please specify date

/ /

Was the pregnancy terminated due to a congenital malformation? Yes No

If Yes, please specify _____

5.3 Is this woman still undelivered? Yes No

If Yes, Will she be receiving the rest of her antenatal care from your hospital? Yes No

If No, please indicate name of hospital providing future care

If still undelivered, please complete section 6a and then go to section 7.

If the woman has delivered, please continue.

5.4 Was delivery induced? Yes No

If Yes, please state indication _____

Was vaginal prostaglandin used? Yes No

5.5 Did the woman labour? Yes No

If Yes, please give date and time of onset of labour

/ / :

5.6 Was delivery by caesarean section? Yes No

If Yes, please state:

Grade of urgency^{5*}

Indication for caesarean section _____

Method of anaesthesia: Regional General anaesthetic

*For guidance please see back cover

Section 6: Outcomes

Section 6a: Woman

6a.1 Was the woman admitted to Level 3 critical care? Yes No

If Yes, please specify

Duration of stay days

Or Tick if woman is still in Level 3 critical care

Or Tick if woman was transferred to another hospital

6a.2 Did any other major maternal morbidity occur?^{6*} Yes No

If Yes, please specify _____

6a.3 What was the woman's date of discharge after her admission for flu? / /

6a.4 Did the woman die? Yes No

If Yes, please specify date and time of death / / : 24hr

What was the primary cause of death as stated on the death certificate?

(Please state if not known.) _____

Section 6b: Section 6b: Infant 1

NB: If more than one infant, for each additional infant, please photocopy the infant section of the form (before filling it in) and attach extra sheet(s) or download additional forms from the website: www.npeu.ox.ac.uk/ukoss

6b.1 Date and time of delivery / / : 24hr

6b.2 Mode of delivery

Spontaneous vaginal Ventouse Lift-out forceps Rotational forceps

Breech Pre-labour caesarean section Caesarean section after onset of labour

6b.3 Birthweight g

6b.4 Sex of infant: Male Female Indeterminate

6b.5 Was the infant stillborn? Yes No

If Yes, please go to section 7.

6b.6 5 min Apgar

6b.7 Was the infant admitted to the neonatal unit? Yes No

If Yes, please specify

Duration of stay days

Or Tick if infant is still in neonatal unit

Or Tick if infant was transferred to another hospital

6b.8 Did any other major infant complications occur?^{7*} Yes No

If Yes, please specify _____

*For guidance please see back cover

6b.9 Did the infant have a congenital anomaly?

Yes No

If Yes, please specify _____

6b.10 Did this infant die?

Yes No

If Yes, please specify date of death

/ /

What was the primary cause of death as stated on the death certificate?

(Please state if not known.) _____

Section 7:

Please use this space to enter any other information you feel may be important

Section 8:

Name of person completing the form _____

Designation _____

Today's date / /

You may find it useful in the case of queries to keep a copy of this form.

*For guidance please see back cover

Definitions

1. UK Census Coding for ethnic group

WHITE

01. British
02. Irish
03. Any other white background

MIXED

04. White and black Caribbean
05. White and black African
06. White and Asian
07. Any other mixed background

ASIAN OR ASIAN BRITISH

08. Indian
09. Pakistani
10. Bangladeshi
11. Any other Asian background

BLACK OR BLACK BRITISH

12. Caribbean
13. African
14. Any other black background

CHINESE OR OTHER ETHNIC GROUP

15. Chinese
16. Any other ethnic group

2. Previous or current pregnancy problems, including:

Thrombotic event
 Amniotic fluid embolism
 Eclampsia
 3 or more miscarriages
 Preterm birth or mid trimester loss
 Neonatal death
 Stillbirth
 Baby with a major congenital abnormality
 Small for gestational age (SGA) infant
 Large for gestational age (LGA) infant
 Infant requiring intensive care
 Puerperal psychosis
 Placenta praevia
 Gestational diabetes
 Significant placental abruption
 Post-partum haemorrhage requiring transfusion
 Surgical procedure in pregnancy
 Hyperemesis requiring admission
 Dehydration requiring admission
 Ovarian hyperstimulation syndrome
 Severe infection e.g. pyelonephritis

3. Previous or pre-existing maternal medical problems, including:

Cardiac disease (congenital or acquired)
 Renal disease
 Endocrine disorders e.g. hypo or hyperthyroidism
 Psychiatric disorders
 Haematological disorders e.g. sickle cell disease, diagnosed thrombophilia
 Inflammatory disorders e.g. inflammatory bowel disease
 Autoimmune diseases
 Cancer
 HIV

4. Estimated date of delivery (EDD):

Use the best estimate (ultrasound scan or date of last menstrual period) based on a 40 week gestation

5. RCA/RCOG/CEMACH/CNST Classification for urgency of caesarean section:

1. Immediate threat to life of woman or fetus
2. Maternal or fetal compromise which is not immediately life-threatening
3. Needing early delivery but no maternal or fetal compromise
4. At a time to suit the woman and maternity team

6. Major maternal medical complications, including:

Persistent vegetative state
 Cardiac arrest
 Cerebrovascular accident
 Adult respiratory distress syndrome
 Disseminated intravascular coagulopathy
 HELLP
 Pulmonary oedema
 Secondary infection e.g. pneumonia
 Renal failure
 Thrombotic event
 Septicaemia
 Required ventilation

7. Fetal/infant complications, including:

Respiratory distress syndrome
 Intraventricular haemorrhage
 Necrotising enterocolitis
 Neonatal encephalopathy
 Chronic lung disease
 Severe jaundice requiring phototherapy
 Major congenital anomaly
 Severe infection e.g. septicaemia, meningitis
 Exchange transfusion



UK Obstetric Surveillance System

Pandemic Influenza in Pregnancy

Case ID:

Thank you for reporting the above case to UKOSS.

Now please make a note of the following details to keep in the UKOSS folder in case of future queries.

Patient's name: _____

Patient's Hospital number: _____

Patient's year of birth: _____

EDD: _____

Case reported by: _____

Date reported: _____

Please keep this sheet with these identifying details,
do not send them to UKOSS.

Return the rest of the form to the address given on the front.

Appendix 2 Study protocol

Project reference 11/46/12 version 3 12/09/12

Project Protocol

1 Project title

Maternal and perinatal outcomes of pandemic influenza in pregnancy.

Project reference 11/46/12.

2 Planned investigation

2.1 Research objectives

- a) To determine:
 - i) The incidence of hospitalisation with pandemic-type influenza in pregnancy.
 - ii) The outcomes of pandemic-type influenza in pregnancy for mother and infant.
- b) To investigate:
 - i) The influence of demographic or pregnancy characteristics on outcomes for mother and infant.
 - ii) The influence of prior immunisation with seasonal influenza vaccine or specific influenza vaccine on outcomes for mother and infant, including an assessment of reasons for non-immunisation.
 - iii) The influence of timing of delivery, particularly in relation to the use of extracorporeal membrane oxygenation on outcomes for mother and infant.
 - iv) The influence of other variations in management on outcomes for mother and infant.
- b) To produce guidance on the management of pandemic-type influenza infection in pregnancy by monthly review of emerging data from this study such that outcomes for women and infants are optimised during the pandemic.

2.2 Existing research

Evidence from the last influenza pandemic (2009/H1N1) showed that pregnant women were particularly vulnerable to severe infection (1-5), resulting in increases in both maternal and perinatal mortality (5-7). Further investigations, including through the UK Obstetric Surveillance System (UKOSS) (5), highlighted specific groups of women who were at higher risk of morbidity after 2009/H1N1 infection in pregnancy. Factors associated with admission to hospital with 2009/H1N1 in pregnancy included maternal obesity, asthma, multiparity, multiple pregnancy, black or other minority group ethnicity and smoking among women younger than 25 years (1, 3, 5).

Active data collection on pregnant women admitted to hospital with confirmed AH1N1 influenza, conducted using the UKOSS, as well as identifying particular subgroups of pregnant women who were at risk of the severest disease and hence a particular target for preventive interventions, also

Page 1 of 13

pinpointed important aspects of management which resulted in improved outcomes for women, including the importance of early antiviral treatment (5). Monthly analysis of emerging data was used to inform ongoing clinical guidance during the pandemic. Admission to an intensive care unit, taken as a proxy for severe morbidity, was also associated with delay in starting treatment with antiviral medication (more than two days after the onset of symptoms) in other population studies (1, 3, 4, 8).

Most studies of 2009/H1N1 in pregnancy reported very incomplete outcomes or outcomes for only a subset of severely affected women (table 1) (1, 3, 4, 8-10). Half of outcome rates were calculated using subsamples of less than fifty per cent of the study cohort. The majority of studies did not follow up women to the end of their pregnancy (3, 4, 8, 10) or in some cases the follow up time was too short to collect outcome information on women infected at all gestations (8, 9). This approach will bias any results towards reporting preterm births which is likely to lead to overly pessimistic results.

The UKOSS study (6) followed up 94% of the original study cohort (n=256) and demonstrated that poor perinatal outcomes, in addition to poor maternal outcomes, were associated with 2009/H1N1 influenza infection in pregnancy. The risks of poor outcomes persisted after adjustment for maternal and pregnancy characteristics known to be associated with poor perinatal outcomes. The study suggested an increased risk of perinatal mortality in women infected with 2009/H1N1 compared with the general population (perinatal mortality rate 39 per 1,000 total births (95%CI 19 to 71) compared to 7 per 1,000 total births (95%CI 3 to 13), aOR: 5.7; 95%CI 2.2 to 15.1), which was explained almost entirely by an increased risk of stillbirth. The study was cited by the European Center for Disease as an important European advance, strengthening the evidence for offering routine immunisation to pregnant women in Europe (11).

Project reference 11/46/12 version 2 21/03/12

Table 1: Studies of pregnancy outcomes among 2009/H1N1 infected women

| Study | Study period | Study population | Number of pregnant women reported | Number of women with outcome data (%) | Pregnancy outcome | Number affected (%) |
|-------------------------|--------------------------------------|---|-----------------------------------|---------------------------------------|--|---------------------|
| Siston 2010 (4) | 14/04/2009 – 21/08/2009 | Pregnant women with 2009/H1N1 influenza, USA | 788 ^a | 169 (21) | Preterm delivery | 51 (30) |
| | 200 (25) | | | Spontaneous Abortion | 8 (4) | |
| Louie 2010 (3) | 23/04/2009 – 11/08/2009 | Women with confirmed 2009/H1N1 requiring intensive care, California, USA | 18 | 12 (67) | Preterm delivery | 10 (83) |
| | | Hospitalised (>24 hrs) or dead women with confirmed 2009/H1N1, California, USA | 94 | 37 (39) | Spontaneous Abortion | 2 (5) |
| Creanga 2010 (8) | 01/05/2009 – 30/06/2009 ^b | Hospitalised women with H1N1v infection, New York, USA | 62 | 40 (65) | Preterm delivery | 6 (15) |
| | | | | | Neonatal death | 2 (5) |
| Hewagama 2010 (10) | 20/05/2009 – 31/07/2009 | Hospitalised pregnant women with 2009/H1N1 infection, Victoria, Australia | 43 | 15 (35) | Preterm delivery | 6 (40) |
| | | | | 24 (55) | Stillbirth ^d / Neonatal death | 3 (13) |
| ANZIC 2010 (1) | 01/06/2009 – 31/08/2009 | Pregnant or recently postpartum women admitted to intensive care unit with 2009/H1N1, Australia and New Zealand | 64 | 61 (95) | Miscarriage ^c | 2 (3) |
| | | | | | Stillbirth ^d | 4 (7) |
| | | | | | Preterm delivery | 22 (37) |
| | | | | | Low birth weight | 18 (31) |
| Dubar 2010 (9) | 01/08/2009 - 31/12/2009 ^e | Pregnant women admitted to hospital with confirmed 2009/H1N1, France | 314 | 146 (46) | Stillbirth | 2 (1) |
| | | | | | Loss of pregnancy prior to 24 weeks | 4 (2) |
| | | | | | Low birth weight | 22 (16) |
| | | | | | Preterm birth | 26 (19) |
| Pierce (UKOSS) 2011 (6) | 01/09/2009 - 31/01/2010 | Pregnant women admitted to hospital with confirmed 2009/H1N1, UK | 272 | 256 (94) | Loss of pregnancy prior to 24 weeks | 5 (2) |
| | | | | | Stillbirth | 7 (3) |
| | | | | | Neonatal death | 3 (1) |
| | | | | | Preterm birth | 59 (24) |

^a Including 509 hospitalised women.^b Followed up until 18/09/2009^c Defined as in utero death <20 weeks gestation^d Defined as in utero death ≥20 weeks gestation^e Followed up until 31/04/2010

Page 3 of 13

In addition to the mortality risk, infants were at greater risk of preterm birth (aOR 4.0, 95%CI 2.7 to 5.9). The data suggest that women with 2009/H1N1 infection who gave birth preterm were more likely to have been infected in their third trimester. Secondary infection with pneumonia played an important role in preterm delivery in this 2009-10 cohort; secondary pneumonia was also associated with preterm birth in women with pandemic influenza in 1919 (12). In the UK data, the risk of preterm birth associated with 2009/H1N1 infection persisted even after accounting for the role of secondary pneumonia which suggests that the excess risk cannot be explained by this factor alone.

Almost half of the infants delivered preterm were delivered early because of maternal compromise. Women are typically delivered during the third trimester in order to aid mechanical ventilation. However, emerging evidence suggests that when women are referred for management with extracorporeal membrane oxygenation (ECMO), in the absence of fetal compromise there may not be an indication to deliver the fetus early (13). This is noted particularly at gestations below 30 to 32 weeks, when the size of the uterus is unlikely to affect mechanical ventilation. Increased availability and use of ECMO may therefore have the potential to impact positively on infant outcomes even in the presence of maternal critical illness.

Overall, these studies show a clear increase in risk of poor maternal and pregnancy outcomes in women infected with AH1N1v influenza. Importantly, immunisation against AH1N1v influenza for pregnant women is thus likely to have a significant impact on health outcomes for both mother and baby. Almost half of the preterm deliveries were due to early delivery for maternal compromise, indicating that the health of pregnant women, which is improved with rapid treatment with antiviral agents, is an important public health priority in future waves of this and other influenza pandemics.

In a future pandemic, however, these observed patterns may differ, and a rapid study of this susceptible group will be important to inform both ongoing preventive and management policies. In particular, a number of clinical questions remain unresolved, which would be informed by the proposed study. In particular, it is important to establish whether pregnancy can be successfully continued in women managed with extracorporeal membrane oxygenation (ECMO). Anecdotal evidence currently exists that pregnancy can be continued during and after ECMO treatment, but further data are needed to fully inform management guidance and also service planning. Additionally it will be important to investigate whether the current seasonal influenza immunisation at the time of the pandemic protects women against pandemic influenza. Immunisation policy changed subsequent to the most recent pandemic, such that pregnant women are now offered seasonal influenza immunisation as part of a routine programme. However, uptake remains relatively low. In a new pandemic situation, establishing whether pregnant women have any protection from existing

vaccines, as well as establishing reasons for non-immunisation, will inform immediate public health actions.

2.3 Research methods

2.3.1 Research Design

This will be a national prospective observational cohort study using the UK Obstetric Surveillance System (UKOSS). UKOSS is a well-established national system to collect information about severe maternal morbidity through more than 700 collaborating clinicians in all 222 hospitals with consultant-led maternity units throughout the UK (see www.npeu.ox.ac.uk/ukoss for further information). All hospitals in the UK with a consultant-led maternity unit collaborate in UKOSS, and thus it is an ideal mechanism to collect comprehensive information about women hospitalised with pandemic influenza in pregnancy, their management and outcomes. In view of the ethical and other difficulties of conducting clinical trials in pregnant women, the collection of national observational data in this way provides the best rapidly available quality evidence to inform ongoing clinical and public health policy and management guidance. This system has been demonstrated to be able to be used to rapidly collect information to inform policy and guidance in a previous pandemic (5, 6).

2.3.2 Cohort Identification

Cases will be identified through the UKOSS network of nominated reporting clinicians in each consultant-led maternity unit in the UK. Nominated reporting clinicians will be asked to report all pregnant women with confirmed pandemic influenza admitted to their unit. In view of the need for rapid and ongoing data analysis and production of guidance, we will use a specific web-based rapid reporting and data collection system for this study to enable UKOSS nominated clinicians to report cases as they occur. In addition, nominated clinicians will be sent a standard UKOSS reporting card each month to further enhance case ascertainment.

Information about comparison women will be obtained from previously collected UKOSS data. The UKOSS database currently contains detailed demographic, pregnancy and delivery information about a cohort of over 1500 women giving birth in the UK identified from the same hospitals as cohort women and data collection is ongoing. Data from comparison women giving birth in the UK in the two years prior to any future pandemic, and not reported to have been infected with influenza, will be used to minimise any potential bias introduced by service changes, which might be possible if an older historical comparison cohort were used.

2.3.3 Data Gathering

On receiving a case report, the central team will ask the clinician to complete an electronic data collection form (see appendix for draft), asking for further detailed information about women's characteristics, diagnosis, management and outcomes. All data collected will be anonymous; no names, addresses, postcodes, hospital or NHS numbers will be collected. Patients will be identified using a unique UKOSS number supplied by the central team. If a completed data collection form is not received back by the central team after three weeks, a further reminder will be sent out. If there is still no response after a further three weeks, the clinician will be contacted by telephone.

2.3.4 Monitoring Data Collection

Information concerning pandemic influenza in pregnancy will be compared with information from the Health Protection Agency and from the Intensive Care National Audit and Research Centre (ICNARC) database. In addition, adult ECMO centres functioning at the time of the pandemic will be contacted directly to identify cases. The organisation responsible for monitoring perinatal and maternal deaths (currently under review) will also be contacted and asked to provide information on fatal cases of pandemic influenza in pregnancy, or consequent stillbirths or neonatal deaths. If any cases are identified through these sources which have not been identified through UKOSS, the nominated UKOSS clinician in the relevant hospital will be contacted and asked to provide further information on management and outcomes.

2.3.5 Study activation

UKOSS is an ongoing research system with a rolling programme of studies. Preparation of the relevant paperwork (study protocol and data collection form) and programming, together with obtaining UKOSS Steering Committee, ethics committee and NHS management approval in advance (as appropriate) would allow the study to be activated very rapidly (within two weeks) in the event of a future pandemic.

2.4 Planned inclusion/exclusion criteria

The cohort will be all pregnant women in the UK admitted to hospital with confirmed pandemic influenza. Women not meeting the inclusion criteria will be excluded.

In order to facilitate a rapid study without placing an additional data collection burden on clinicians in the context of an influenza pandemic, information about comparison women will be obtained from previously collected UKOSS data. This approach was successfully used in the most recent 2009-10 influenza pandemic (5, 6). The UKOSS database currently contains detailed demographic, pregnancy and delivery information about a cohort of over 1500 women giving birth

Project reference 11/46/12 version 2 21/03/12

in the UK identified from the same hospitals as cohort women and data collection is ongoing. Data from comparison women giving birth in the UK in the two years prior to any future pandemic, and not reported to have been infected with influenza, will be used to minimise any potential bias introduced by service changes, which might be possible if an older historical comparison cohort were used.

The denominator population will be all women giving birth in the UK.

2.5 Ethical arrangements

This study seeks to collect anonymous information only about women who have pandemic influenza during pregnancy. This information is key to identifying evidence to inform ongoing policy and guidance in the context of a pandemic. The collection of information about individuals in this way raises these main ethical issues:

1. Consent. It will not be practicable to obtain consent for data collection from individual women, as this would prevent the achievement of the primary objective of the study, namely to document the numbers of women who are affected in the UK. Accurate measurement of incidence requires documentation about ALL cases occurring in the UK. The National Information Governance Board (NIGB) Ethics and Confidentiality Committee considers that organisations seeking to use NHS information for research purposes without consent should seek anonymised or pseudonymised data only and not any personally identifiable information (14). Accordingly, this study will not collect names, addresses, postcodes, dates of birth, NHS or hospital numbers. Collection of anonymised data in this way in the absence of consent is unlikely to cause significant harm. This UKOSS methodology has received the approval of the London Multi-centre Research Ethics Committee (study reference 04/MRE02/45).

2. Confidentiality and data security. In order to maintain patient confidentiality, no names, addresses, postcodes, dates of birth, hospital or NHS numbers will be collected as outlined above. The security of all data will be maintained by storage on a secure University network, accessible only by the key researchers and responsible members of the University of Oxford who may require access to data to ensure compliance with regulations. Access by any other individuals for the purposes of any other study will only be allowed after review by the UK Obstetric Surveillance System Steering Committee and further reference to a Research Ethics Committee. Prof Jenny Kurinczuk, Director of the National Perinatal Epidemiology Unit, University of Oxford will act as custodian of the data.

2.6 Proposed sample size

As the study we propose is a national observational study, the study sample size will be governed by the disease incidence. As an estimate, based on our experience in the 2009-10 pandemic, we anticipate identifying 300-500 infected pregnant women admitted to hospital. Information on up to

1500 comparison women is available from existing UKOSS data. We have estimated the study size based on estimated incidence and not any specific outcomes. However, as a guide, the table below indicates the odds ratios detectable by a study of this size, assuming 80% power and a 5% level of significance with a 3:1 ratio of unexposed to exposed:

| Frequency of outcome in comparison cohort | Odds ratio detectable by the study |
|---|------------------------------------|
| 1% | 2.8 |
| 5% | 1.8 |
| 10% | 1.6 |
| 20% | 1.4 |

2.7 Statistical analysis

The following analyses will be conducted:

- a) Estimation of the incidence of hospitalisation with pandemic influenza amongst pregnant women with 95% confidence intervals, using the denominator of total maternities in the UK over the relevant time period.
- b) Comparison of the rates of individual adverse outcomes (maternal death, level 3 critical care unit admission, other major complication, preterm birth, congenital anomaly, stillbirth, early neonatal death, perinatal death) between women infected with pandemic influenza admitted to hospital and the comparison cohort. Adjustment for potential confounders will be undertaken using Poisson regression (for rare events) or logistic regression (if the outcomes are more frequent). Confounders included in the model will be those known to be associated with the relevant outcomes (age, parity, marital status, ethnicity, smoking status, socioeconomic status, previous preterm delivery, previous perinatal death).
- c) The management of pregnant women hospitalised with confirmed pandemic influenza will be described. Differences in outcomes will be explored in different subgroups according to management. The initial subgroups examined will be as follows (although note that these may be revised as more becomes known about the patterns of disease during the pandemic):
 - Antiviral treatment received within 48hr of symptom onset (Yes/No)
 - Type of antiviral received
 - Dose of antiviral received
 - Use of ECMO during pregnancy
 - Delivery prior to institution of respiratory support (Yes/No)
 - Mode of delivery

Guidance on the management of pregnant women with pandemic influenza in pregnancy, informed by ongoing data analysis, will be produced and reviewed monthly with the relevant organisations, for example, the Department of Health, Royal College of Obstetricians and Gynaecologists, Royal

Project reference 11/46/12 version 2 21/03/12

College of Midwives and Royal College of General Practitioners, in order to improve outcomes for women and infants based on the available evidence.

2.8 Proposed outcome measures

The following outcomes will be compared between women with influenza and comparison women, and explored in different subgroups according to management variations:

Maternal death
 Maternal level 3 critical care unit admission
 Other major maternal complication
 Preterm birth
 Congenital anomaly
 Perinatal death

2.9 Research governance

Research Ethics Committee and NHS management approval will be obtained as appropriate prior to the start of the study. The University of Oxford will act as sponsor of the study.

The overall conduct of the study will be monitored by a Management Group consisting of the Co-Applicants, Information Scientist, Researcher, Project Programmer, Statistician and other external members as considered necessary for the project.

3 Project timetable and milestones

3.1 Timetable

Pre-activation phase (provisional start date 1 June 2012)

| | |
|-----------|---|
| June 2012 | Apply for necessary approvals, develop web-based reporting systems, finalise and format data collection form and clinician information. |
|-----------|---|

Activation phase

| | |
|-------------|---|
| Week 1 | Study information mailed/mailed to clinicians |
| Week 3 | Data collection commenced |
| Months 2-6 | Ongoing reporting of new cases, data analysis, production of management guidance and dissemination. |
| Months 7-10 | Collection of remaining pregnancy outcome data |
| Month 12 | Final pregnancy outcome analysis, production of guidance and dissemination |

3.2 Milestones

Pre-activation phase

| | |
|-------------|---|
| July 2012 | Web-based reporting system in place, data collection form finalised and formatted |
| August 2012 | Approvals completed (assuming no expedited process) |

Activation phase

| | |
|------------|---|
| Month 2 | First data analysis, first guidance issued |
| Months 3-5 | Ongoing monthly data analysis, revised guidance issued |
| Month 6 | Final report on immediate maternal and pregnancy outcomes, revised guidance |
| Month 12 | Final report on complete pregnancy outcomes, including data on pregnancy outcomes of women undelivered at the time of interim reports |

4 Expertise

The research team has the necessary expertise to carry out this comprehensive national study, including public health (MK, JK), congenital malformations (JK), perinatal epidemiology and statistics (MQ, MK, JK, PB), obstetric surveillance (MK), guideline development (JK, PB), and obstetrics (PO'B, PB).

The National Perinatal Epidemiology Unit (NPEU) has a national and international reputation for conducting studies which change policy, influence practice and improve the care of women and their babies. MK developed and launched UKOSS and led the initiative from its inception; since its establishment in 2005, UKOSS has generated evidence to improve prevention and management of a range of severe pregnancy complications in the UK involving a network of over 700 collaborating clinicians at all 222 hospitals with consultant maternity units throughout the UK. The infrastructure is thus in place to allow rapid identification of women hospitalized with pandemic influenza infection in pregnancy through an established active surveillance system.

PO'B is the Royal College of Obstetricians and Gynaecologists lead for pandemic influenza planning and will provide a direct link to produce ongoing updated guidance through the RCOG pandemic influenza planning group.

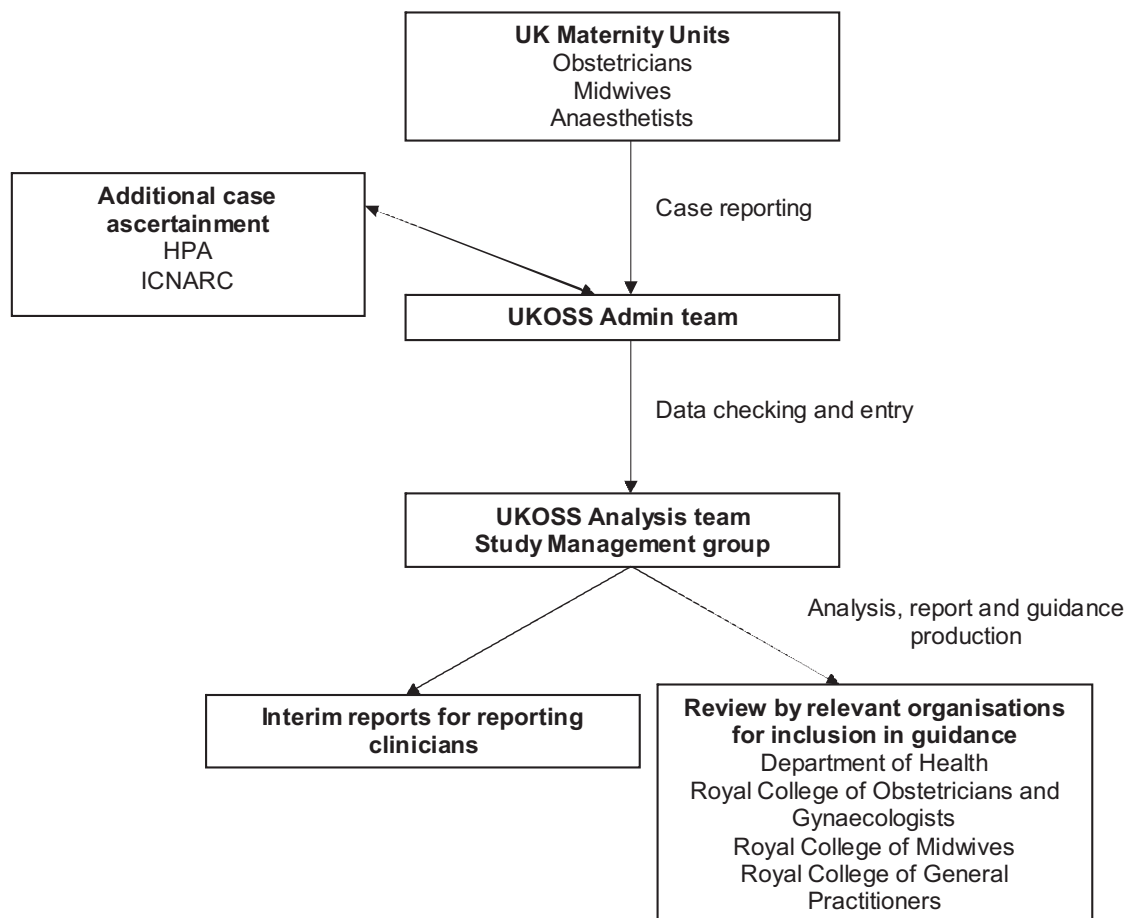
5 Service Users

Lay representatives from the UKOSS Steering Committee and Sands, the stillbirth and neonatal death charity, have been consulted about the development and acceptability of the study protocol, data collection form, information and other materials.

Project reference 11/46/12 version 2 21/03/12

As all data collected will be anonymous, we cannot feedback results directly to women whose data are included in the study. The research team will therefore work directly with Sands, the stillbirth and neonatal death charity, and the NCT (formerly National Childbirth Trust), as well as available net fora such as Mumsnet, to ensure that results and advice are disseminated widely to pregnant women and their partners. The NPEU has an active user and voluntary organisations advisory group through whom dissemination will also be undertaken.

6 Flow diagram



Page 11 of 13

7 References

1. Critical illness due to 2009 A/H1N1 influenza in pregnant and postpartum women: population based cohort study. *BMJ*. 2010;340:c1279.
2. Jamieson DJ, Honein MA, Rasmussen SA, Williams JL, Swerdlow DL, Biggerstaff MS, et al. H1N1 2009 influenza virus infection during pregnancy in the USA. *Lancet*. 2009 Aug 8;374(9688):451-8.
3. Louie JK, Acosta M, Jamieson DJ, Honein MA. Severe 2009 H1N1 influenza in pregnant and postpartum women in California. *N Engl J Med*. 2010 Jan 7;362(1):27-35.
4. Siston AM, Rasmussen SA, Honein MA, Fry AM, Seib K, Callaghan WM, et al. Pandemic 2009 influenza A(H1N1) virus illness among pregnant women in the United States. *JAMA*. 2010 Apr 21;303(15):1517-25.
5. Yates LM, Pierce M, Stephens S, Mill AC, Spark P, Kurinczuk JJ, et al. Influenza A/H1N1v in pregnancy: An investigation of the characteristics of affected women and the relationship to pregnancy outcomes for mother and infant. *Health Technol Assess*. 2010;14(34):109-82.
6. Pierce M, Kurinczuk JJ, Spark P, Brocklehurst P, Knight M. Perinatal outcomes after maternal 2009/H1N1 infection: national cohort study. *BMJ*. 2011;342:d3214.
7. Donaldson LJ, Rutter PD, Ellis BM, Greaves FE, Mytton OT, Pebody RG, et al. Mortality from pandemic A/H1N1 2009 influenza in England: public health surveillance study. *BMJ*. 2009;339:b5213.
8. Creanga AA, Johnson TF, Graitcer SB, Hartman LK, Al-Samarrai T, Schwarz AG, et al. Severity of 2009 pandemic influenza A (H1N1) virus infection in pregnant women. *Obstet Gynecol*. 2010 Apr;115(4):717-26.
9. Dubar G, Azria E, Tesniere A, Dupont H, Le Ray C, Baugnon T, et al. French experience of 2009 A/H1N1v influenza in pregnant women. *PLoS One*. 2010;5(10).
10. Hewagama S, Walker SP, Stuart RL, Gordon C, Johnson PD, Friedman ND, et al. 2009 H1N1 influenza A and pregnancy outcomes in Victoria, Australia. *Clin Infect Dis*. 2010 Mar 1;50(5):686-90.
11. European Center for Disease Prevention and Control. Poor pregnancy outcomes associated with maternal infection with the A(H1N1) 2009 virus during the pandemic – findings from a European cohort study. 2011 [cited 2011 August 2011]; Available from: http://ecdc.europa.eu/en/activities/sciadvice/Lists/ECDC%20Reviews/ECDC_DispForm.aspx?List=512ff74f-77d4-4ad8-b6d6-bf0f23083f30&ID=1157&RootFolder=%2Fen%2Factivities%2Fsciadvice%2FLists%2FECDC%20Reviews.
12. Harris JW. Influenza occurring in pregnant women. *JAMA*. 1919;72:978-80.
13. Department of Health. Clinical Management Guidelines for Pregnancy Addendum: Extracorporeal Membrane Oxygenation (ECMO) in pregnancy. 2010 [accessed 09/02/2011]; Available from: <http://www.rcog.org.uk/files/rcog->

Project reference 11/46/12 version 2 21/03/12

[corp/CLINICAL%20MANAGEMENT%20GUIDELINES%20FOR%20PREGNANCY%20-%2020%20dec%2010%20amended.pdf](http://www.dh.gov.uk/assetRoot/04/06/63/84/04066384.pdf)

14. Department of Health. Guidance Notes: Section 60 of the Health and Social Care Act 2001.

[April 2004]; Available from: <http://www.dh.gov.uk/assetRoot/04/06/63/84/04066384.pdf>.

Page 13 of 13

A decorative graphic consisting of numerous thin, parallel green lines that curve from the left side of the page towards the right, creating a sense of movement and depth.

EME
HS&DR
HTA
PGfAR
PHR

Part of the NIHR Journals Library
www.journalslibrary.nihr.ac.uk

This report presents independent research funded by the National Institute for Health Research (NIHR). The views expressed are those of the author(s) and not necessarily those of the NHS, the NIHR or the Department of Health

Published by the NIHR Journals Library