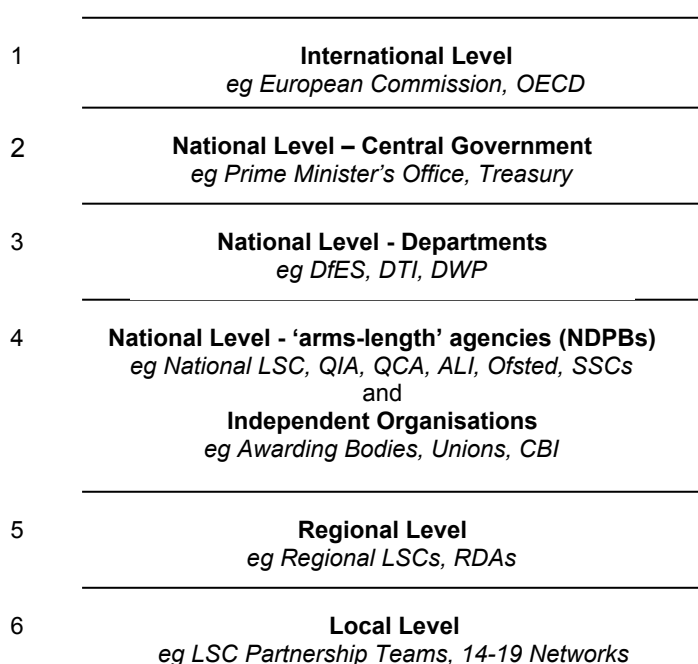


Figure 1: Levels within the Learning and Skills Sector



Key	
ACL	= Adult & Community Learning
ALI	= Adult Learning Inspectorate
CBI	= Confederation of British Industry
DfES	= Department for Education & Skills
DTI	= Department of Trade & Industry
DWP	= Department for Work & Pensions
FE	= Further Education
LSC	= Learning and Skills Council
MD	= Managing Director
NDPB	= Non Departmental Public Bodies
OECD	= Organisation for Economic Co-operation & Development
QCA	= Qualifications & Curriculum Authority
QIA	= Quality Improvement Agency
RDA	= Regional Development Agencies
SfL	= Skills for Life
SSC	= Sector Skills Councils
ULR	= Union Learning Representative
WBL	= Work-based Learning

	FE		ACL		WBL
7	Institutional Level <i>eg College Principals</i>	7	Centre <i>eg Manager</i>	7	Firm <i>eg MD</i>
8	Departmental Level <i>eg Faculties, SfL Teams</i>	8	Course Level Leader	8	Training Dept <i>eg Training Manager, ULR</i>
9	Course Level <i>eg Managers, Leaders</i>	9	Classroom Level Tutors	9	Classroom Level Tutors
10	Classroom Level <i>eg Teachers</i>	10	Learners	10	Learners
11	Learners				

Figure 2: Interviews in Learning Sites, Spring 2004 – Summer 2006

Site type	Learners	Tutors & Managers	Workplace managers & ULRs	Total
FE level 1 & 2	168	81	---	249
ACL	92	59	---	151
WBL	89	44	26	159
TOTAL	349	184	26	559

Figure 3: Policy Interviews to date (February 2007)

Type of Organisation	Number of interviews
LSC (national, regional & local)	50
National Departments and NDPBs	24
Other national, regional and local bodies, including those of employers and unions	46
TOTAL	120

Figure 4: Government model of Public Service Reform

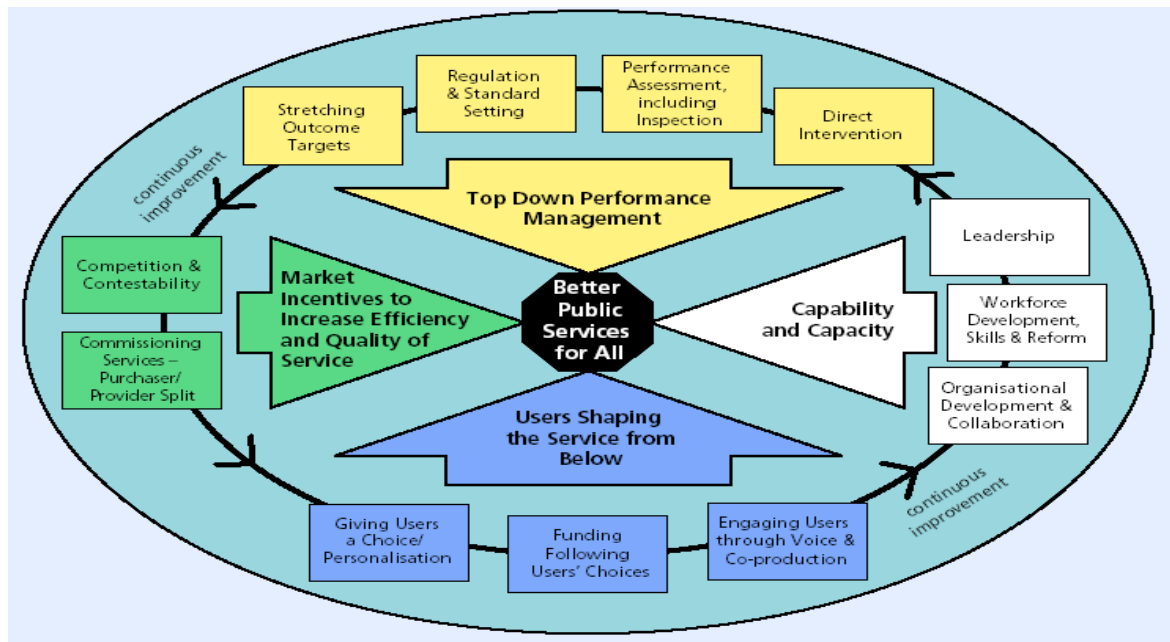


Figure 5: Increasing pressure on staff

