

Supplement for

Changing incidence and risk factors for Kaposi sarcoma by time since starting antiretroviral therapy: Collaborative analysis of 21 European cohort studies

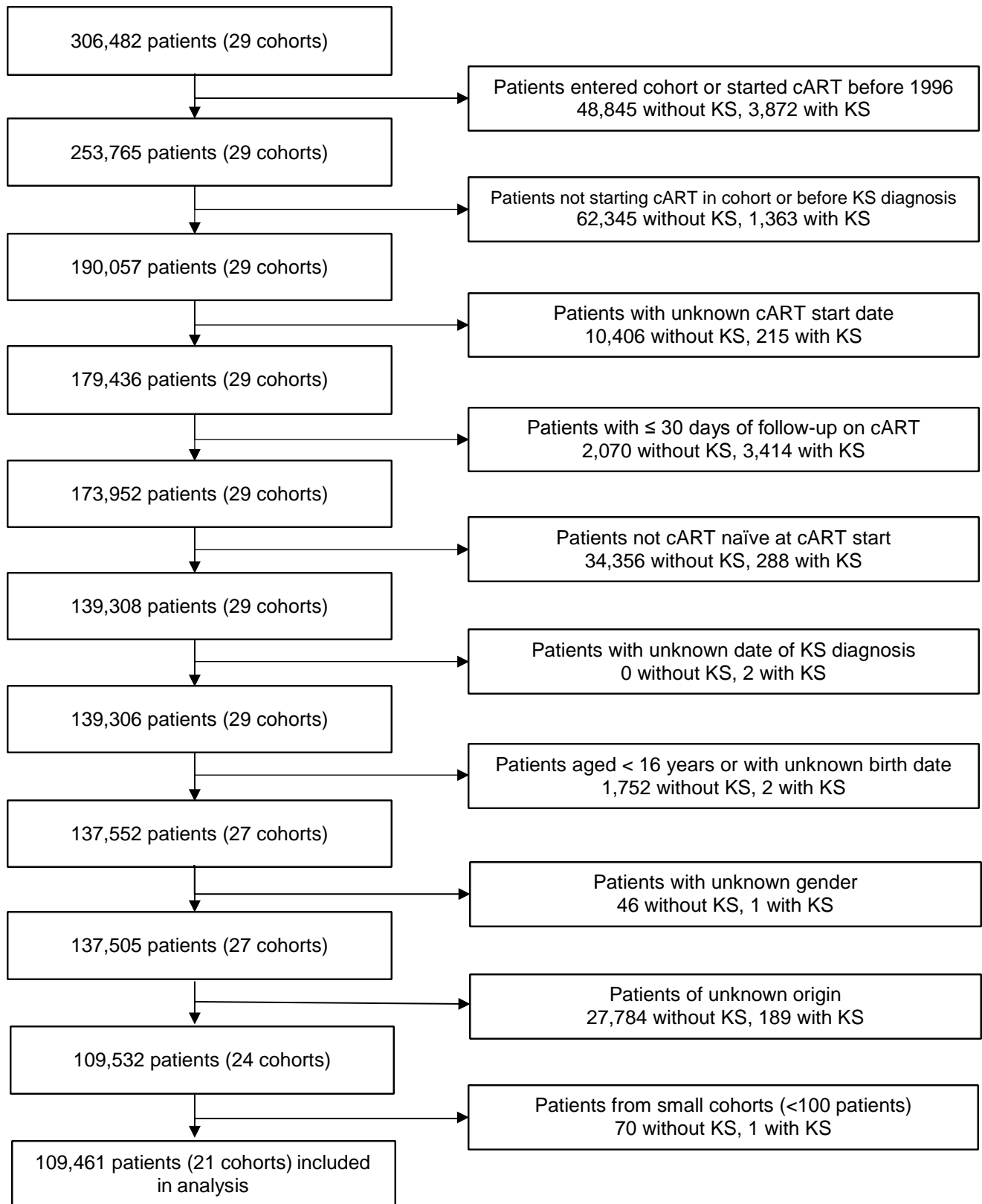
Authors: The Cancer Project Working Group for the Collaboration of Observational HIV Epidemiological Research Europe (COHERE) study in EuroCoord¹

Table of Content:

- Figure S1.** Flow Diagram for Selection of Study Population.
- Figure S2.** Hazard Ratios for the Risk of Developing KS by Time Periods Since Starting Combination Antiretroviral Therapy.
- Table S1.** Kaposi Sarcoma Incidence Rates per 100,000 Person-Years by Time Periods Since Starting Combination Antiretroviral Therapy.
- Table S2.** Risk Factors for Developing Kaposi Sarcoma by Time Periods Since Starting Combination Antiretroviral Therapy. Results from Univariable Cox Regression Models.
- Table S3.** Risk Factors for Developing Kaposi Sarcoma by Time Periods Since Starting Combination Antiretroviral Therapy. Results from Univariable Cox Regression Model of Complete Cases.
- Table S4.** Kaposi Sarcoma Incidence Rates per 100,000 Person-Years and Hazard Ratios for Univariable and Multivariable Cox Regression Models in the First Eight Years Since Starting Combination Antiretroviral Therapy.
- Table S5.** Additional Analysis including Baseline CD4 Cell Counts. Risk Factors for Developing Kaposi Sarcoma by Time Periods Since Starting Combination Antiretroviral Therapy. Results from Multivariable Cox Regression Models.
- Table S6.** Additional Analysis including Late Presentation. Risk Factors for Developing Kaposi Sarcoma by Time Periods Since Starting Combination Antiretroviral Therapy. Results from Multivariable Cox Regression Models.
- Table S7.** Kaposi Sarcoma Incidence Rates per 100,000 Person-Years by Time Periods Since Starting Combination Antiretroviral Therapy: Published Studies.

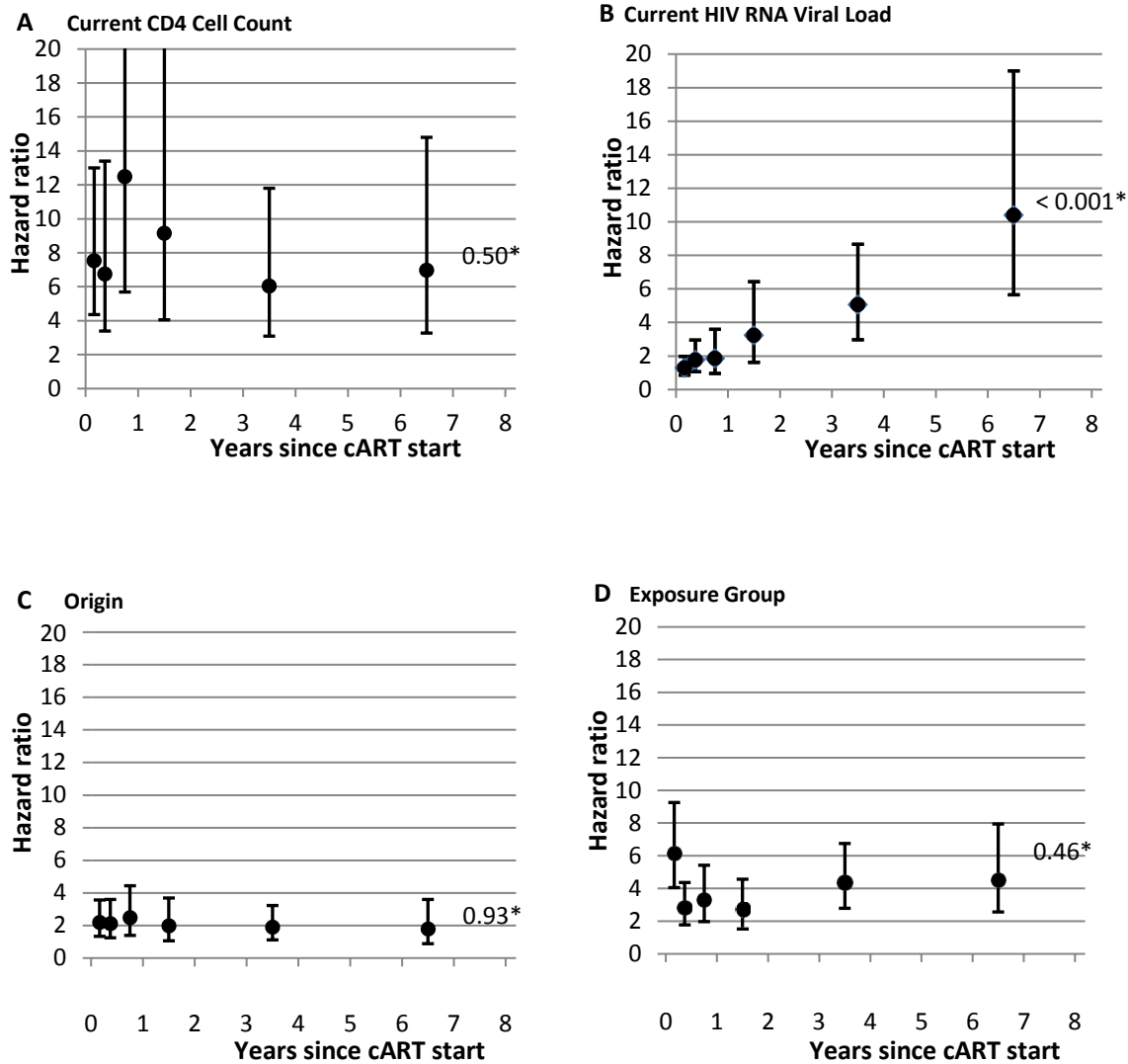
¹A list of the writing group members is provided in the acknowledgments.

Figure S1. Flow Diagram for Selection of Study Population



Abbreviations: cART, combination antiretroviral therapy; KS, Kaposi sarcoma

Figure S2. Hazard Ratios for the Risk of Developing KS by Time Periods Since Starting Combination Antiretroviral Therapy.



*p-value for change over time since cART start from test for interaction

The graphs show the hazard ratios of high risk versus low risk groups for different risk factors. Panel A: current CD4 cell count < 50 cells/ μ L versus 350-500ells/ μ L, panel B: current HIV RNA viral loads >100,000 coples/ml versus <500 copies /mL; panel C: sub-Saharan Africa versus European origin, and panel D: Men who have sex with men versus heterosexual men. Hazard ratios are adjusted for exposure group, origin, current age, current CD4 cell counts, current HIV RNA viral loads, first-line cART regimen, calendar period of enrolment; and stratified by cohort. Error bars correspond to 95% confidence interval.

Abbreviations: cART, combination antiretroviral therapy; KS, Kaposi sarcoma.

Table S1. Kaposi Sarcoma Incidence Rates per 100,000 Person-Years by Time Periods Since Starting Combination Antiretroviral Therapy.

	30-90 days			91-180 days			6-12 months			1-2 years			2-5 years			5-8 years		
	KS	pyrs	Rate (95% CI)	KS	pyrs	Rate (95% CI)	KS	pyrs	Rate (95% CI)	KS	pyrs	Rate (95% CI)	KS	pyrs	Rate (95% CI)	KS	pyrs	Rate (95% CI)
Total	269	18300	1472 (1306-1659)	149	25600	582 (495.6-683.3)	123	49800	247 (206.9-294.7)	106	88100	120 (99.5-145.6)	168	197500	85 (73.1-99)	101	122500	82 (67.9-100)
Exposure group																		
MSM	177	6830	2590 (2235-3001)	81	9560	847 (681.3-1053)	72	18500	389 (308.6-489.8)	56	32300	173 (133.4-225.2)	103	69100	149 (122.8-180.8)	65	40700	160 (125.3-203.7)
Other men	47	5410	869 (653.1-1157)	42	7590	553 (409.0-748.8)	32	14800	216 (152.8-305.5)	30	26400	114 (79.4-162.5)	38	61500	62 (45-85)	22	39900	55 (36.3-83.8)
Women	25	4990	501 (338.5-741.3)	20	7010	285 (184.1-442.2)	17	13700	124 (77.1-199.5)	15	24500	61 (36.9-101.4)	22	56400	39 (25.7-59.2)	8	35500	23 (11.3-45)
Origin																		
European	217	14100	1537 (1346-1756)	107	19800	540 (447.1-653.1)	94	38600	244 (199.1-298.3)	81	68300	119 (95.4-147.5)	130	153900	84 (71.2-100.3)	84	96700	87 (70.1-107.6)
African	35	2720	1286 (923.1-1791)	29	3800	763 (530.4-1098)	23	7360	313 (207.7-470.4)	19	13000	146 (93.2-229.1)	27	29300	92 (63.2-134.5)	13	17800	73 (42.4-125.8)
Other	17	1440	1184 (735.9-1904)	13	2000	649 (376.7-1117)	6	3880	155 (69.4-343.9)	6	6780	89 (39.7-197)	11	14300	77 (42.5-138.7)	4	7970	50 (18.8-133.7)
Age group [years]*																		
16-30	36	3640	989 (713.1-1371)	14	4920	284 (168.5-480.3)	15	8940	168 (101.1-278.2)	9	13600	66 (34.4-126.9)	18	20100	90 (56.5-142.4)	10	5470	183 (98.3-339.7)
31-40	97	7280	1332 (1092-1625)	66	10200	646 (507.3-822)	51	19900	257 (195-337.6)	38	35000	109 (79-149.2)	63	75300	84 (65.4-107.1)	43	39300	109 (81.1-147.5)
41-50	85	4760	1786 (1444-2209)	39	6770	576 (420.9-788.5)	31	13600	229 (160.8-325.1)	34	25300	134 (99-188)	51	64500	79 (60.1-104)	25	47900	52 (35.2-77.2)
>50	51	2590	1968 (1495-2589)	30	3690	813 (568.1-1162)	26	7430	350 (238.4-514.2)	25	14100	177 (119.6-261.9)	36	37600	96 (69.1-132.7)	23	29700	77 (51.4-116.3)
CD4 cell count at start cART [cells/μl]																		
<50	93	2070	4487 (3662-5498)	44	2880	1528 (1137-2053)	33	5610	588 (417.9-826.8)	23	10100	229 (152.1-344.4)	19	24000	79 (50.6-124.2)	12	16400	73 (41.5-128.5)
50-99	41	1370	2999 (2208-4073)	21	1910	1099 (716.4-1685)	11	3730	295 (163.2-532.2)	7	6730	104 (49.6-218.1)	16	16000	100 (61.2-163.2)	9	10700	84 (43.9-162.3)
100-199	37	2890	1279 (927.0-1766)	23	4070	565 (375.1-849.5)	25	8010	312 (211-462)	25	14400	173 (117.1-256.5)	33	34200	96 (68.6-135.6)	12	21700	55 (31.5-97.6)
200-349	44	5360	821 (610.8-1103)	33	7560	436 (310.2-613.7)	28	14800	189 (130.2-273.2)	20	26500	75 (48.6-116.8)	39	58700	66 (48.6-91)	24	32900	73 (48.9-108.8)
350-499	20	2780	720 (464.4-1116)	9	3870	232 (120.9-446.6)	7	7420	94 (45-198)	14	12600	111 (65.7-187.2)	17	25700	66 (41.1-106.4)	20	15300	131 (84.2-202.2)
> 500	2	1830	109 (27.3-436)	4	2540	157 (59-418.8)	4	4830	83 (31.1-220.5)	8	8250	97 (48.5-194)	27	17900	151 (103.5-220.1)	17	12100	141 (87.5-226.3)
CD4 cell count [cells/μl]*																		
<50	61	1350	4524 (3520-5815)	27	1080	2490 (1708-3631)	19	1180	1613 (1029-2529)	16	1300	1227 (751.8-2003)	23	2500	919 (610.5-1382)	18	1420	1265 (796.8-2007)
50-99	35	1170	3000 (2154-4178)	24	1420	1689 (1132-2519)	10	2080	480 (258.4-892.4)	11	2120	520 (287.9-938.7)	14	3150	444 (262.9-749.4)	6	1690	354 (159.2-788.7)
100-199	52	2670	1946 (1483-2554)	29	3610	803 (557.8-1155)	30	6740	445 (311.3-636.8)	14	9000	156 (92.2-262.8)	21	12700	166 (108.1-254.3)	17	6260	272 (168.9-437.0)
200-349	59	5070	1163 (901.1-1501)	31	6700	463 (325.2-657.6)	25	12200	204 (138.1-302.5)	17	20400	83 (51.8-133.9)	37	37800	98 (70.9-135.1)	17	19200	89 (55.1-142.6)
350-499	27	3550	760 (521.5-1109)	19	5790	328 (209.3-514.4)	15	11800	127 (76.48-210.4)	18	21600	84 (52.6-132.6)	33	48500	68 (48.4-95.8)	19	28300	67 (42.8-105.2)
> 500	8	2840	282 (141-563.7)	12	5610	214 (121.6-377)	20	14000	143 (92.2-221.4)	27	31600	85 (58.6-124.6)	36	90100	40 (28.8-55.4)	23	64700	36 (23.64-53.53)
HIV RNA at start cART [copies/mL]																		
\geq 100,000	150	6480	2316 (1974-2718)	87	9080	958 (776.2-1182)	62	17800	349 (272.1-447.6)	45	31700	142 (105.9-189.9)	76	73400	104 (82.7-129.6)	40	47500	84 (61.8-114.8)
10,001-99,999	49	5820	842 (636.6-1114)	31	8160	380 (267.3-540.4)	37	15900	233 (168.7-321.3)	33	28200	117 (83.2-164.6)	47	63200	74 (55.8-98.9)	39	39000	100 (73.1-136.9)
501-9,999	7	2060	339 (161.8-712)	5	2880	174 (72.33-417.5)	5	5570	90 (37.3-215.7)	7	9760	72 (34.2-150.5)	13	21500	60 (35.1-104)	12	12700	94 (53.6-166.2)
\leq 500	2	530	379 (94.7-1514)	3	730	410 (132.2-1271)	1	1390	72 (10.2-512.2)	2	2370	84 (21.1-336.9)	1	4980	20 (2.8-142.6)	0	2660	0 (0-138.6)
HIV RNA [copies/mL]*																		
\geq 100,000	73	2980	2451 (1949-3083)	27	1890	1426 (977.6-2079)	17	2420	704 (437.5-1100)	19	3500	542 (346-850.4)	33	6990	472 (335.6-664)	35	3890	900 (646.3-1254)
10,001-99,999	31	2950	1049 (737.8-1492)	9	2180	413 (214.9-793.7)	13	3440	378 (219.5-651.1)	14	6030	232 (137.5-392)	33	14100	235 (166.8-330)	13	8340	156 (90.5-268.3)
501-9,999	61	4600	1326 (1031-1704)	28	4780	586 (404.9-849.2)	20	6820	294 (189.3-454.9)	11	11100	99 (55.1-179.6)	25	21700	115 (77.8-170.3)	13	11300	116 (67.1-199)
\leq 500	57	5500	1037 (799.8-1344)	70	14600	478 (378-603.9)	72	34200	210 (167-265)	54	63800	85 (64.8-110.5)	71	150100	47 (37.5-59.7)	40	97700	41 (30-55.8)
CDC stage at start cART																		
A/B	160	15300	1049 (898.5-1225)	99	21400	463 (379.9-563.4)	90	41600	216 (175.9-265.9)	74	73300	101 (80.4-126.7)	134	162500	82 (69.6-97.7)	15	99400	84 (67.4-103.6)
C	101	2600	3882 (3194-4718)	42	3620	1161 (857.7-1571)	29	7070	410 (284.9-590)	23	12700	181 (119.9-271.6)	27	30500	89 (60.8-129.3)	15	20200	74 (44.7-123)
Late presentation																		
No	37	7070	523 (379.1-722.2)	28	9900	283 (195.3-409.8)	32	19100	168 (118.5-237)	36	33100	109 (78.5-150.8)	56	69500	81 (62-104.7)	42	39400	107 (78.8-144.2)
Yes	225	10200	2196 (1927-2502)	115	14400	801 (666.8-961)	86	28100	306 (247.6-377.9)	66	50400	131 (102.8-166.5)	101	118000	86 (70.5-104.1)	56	76400	73 (56.4-95.2)
First-line cART regimen																		
Non boosted PI	45	3650	1233 (920.4-1651)	35	5190	675 (484.5-939.8)	32	10300	309 (218.7-437.4)	33	19400	170 (121-239.3)	56	52100	107 (82.6-139.5)	52	43900	119 (90.3-155.5)
Boosted PI	127	6350	1999 (1679-2378)	52	8830	589 (448.9-773)	40	16900	236 (173.3-322)	36	29100	124 (89.3-171.6)	55	58800	94 (71.9-121.9)	24	28200	85 (57-126.9)
NNRTI without PI	89	7170	1241 (1008-1528)	52	10100	517 (394.1-678.8)	45	19600	230 (171.8-308.2)	34	34300	99 (70.8-138.6)	52	74200	70 (53.4-91.9)	21	41500	51 (33-78.2)
Other	8	1100	727 (363.8-1455)	10	1540	651 (350.4-1210)	6	2970	202 (90.7-449.5)	3	5250	57 (18.4-177.1)	5	12300	41 (16.9-97.4)	4	8830	45 (17-120.7)
Calendar year of enrolment																		
1996-2000	64	5050	1267 (992-1619)	52	7190	723 (551.2-949.2)	34	14400	236 (168.7-330.5)	47	27100	173 (130.2-230.7)	74	73100	101 (80.6-127.1)	65	61600	106 (82.8-134.6)
2001-2005	98	6060	1618 (1327-1972)	50	8600	581 (440.6-767.1)	48	17100	280 (211-371.5)	33	32000	103 (73.4-145.2)	71	81400	87 (69.1-110.1)	34	55000	62 (44.2-86.6)
2006-2010	70	5530	1266 (1001-1600)	35	7780	450 (323-626.6)	35	15100	231 (166-322)	26	26000	100 (68.1-146.8)	23	42400	54 (36-81.5)	2	5940	34 (8.4-134.7)
2011-2014	37	1640	2261 (1638-3121)	12	2040	589 (334.7-1038)	6	3130	192 (86.2-427.1)	0	2970	0 (0.00-124.2)	0	480	0 (0-768.5)	-	-	-

Abbreviations: pyrs, person-years; cART, combination antiretroviral therapy; KS, Kaposi Sarcoma; CI, Confidence Interval; NNRTI, Non-nucleoside reverse-transcriptase inhibitors; PI, Protease inhibitors; NOS, Not otherwise specified; MSM, men having sex with men.

Table S2. Risk Factors for Developing Kaposi Sarcoma by Time Periods Since Starting Combination Antiretroviral Therapy. Results from Univariable Cox Regression Models.[#]

	30-90 days		91-180 days		6-12 months		1-2 years		2-5 years		5-8 years		P-value [§]
	HR	95% CI	HR	95% CI	HR	95% CI	HR	95% CI	HR	95% CI	HR	95% CI	
Exposure group	(249 KS/103170 patients) (143 KS/99973 patients) (121 KS/96225 patients) (101 KS/89522 patients) (163 KS/77361 patients) (95 KS/48963 patients)												0.21
MSM	3.03	(2.18-4.21)	1.56	(1.07-2.29)	1.82	(1.18-2.80)	1.70	(1.08-2.68)	2.45	(1.67-3.60)	2.82	(1.71-4.64)	
Other men	1.00	-	1.00	-	1.00	-	1.00	-	1.00	-	1.00	-	
Women	0.58	(0.36-0.95)	0.48	(0.28-0.82)	0.57	(0.32-1.03)	0.52	(0.28-0.97)	0.60	(0.36-1.02)	0.39	(0.17-0.88)	
Origin	(269 KS/109461 patients) (149 KS/105990 patients) (123 KS/101944 patients) (106 KS/94762 patients) (168 KS/81776 patients) (101 KS/51674 patients)												0.81
European	1.00	-	1.00	-	1.00	-	1.00	-	1.00	-	1.00	-	
African	0.84	(0.58-1.21)	1.17	(0.77-1.79)	1.22	(0.76-1.96)	1.07	(0.64-1.80)	0.94	(0.61-1.44)	0.71	(0.39-1.29)	
Other	0.72	(0.44-1.19)	1.16	(0.65-2.09)	0.59	(0.26-1.37)	0.87	(0.37-2.02)	0.95	(0.51-1.77)	0.57	(0.20-1.57)	
Age group [years]*	(269 KS/109461 patients) (149 KS/105990 patients) (123 KS/101944 patients) (106 KS/94762 patients) (168 KS/81776 patients) (101 KS/51674 patients)												<0.01
16-30	1.00	-	1.00	-	1.00	-	1.00	-	1.00	-	1.00	-	
31-40	1.33	(0.91-1.95)	2.25	(1.26-4.01)	1.53	(0.86-2.73)	1.61	(0.78-3.32)	0.94	(0.56-1.60)	0.60	(0.30-1.19)	
41-50	1.74	(1.18-2.57)	1.95	(1.06-3.60)	1.32	(0.71-2.45)	1.98	(0.95-4.14)	0.87	(0.51-1.49)	0.28	(0.13-0.58)	
>50	1.89	(1.23-2.90)	2.66	(1.41-5.02)	2.01	(1.06-3.79)	2.57	(1.20-5.52)	1.04	(0.59-1.84)	0.40	(0.19-0.85)	
CD4 cell count start cART [cells/μl]	(237 KS/97660 patients) (134 KS/94573 patients) (108 KS/90954 patients) (97 KS/84564 patients) (151 KS/73054 patients) (94 KS/46108 patients)												<0.001
<50	6.22	(3.82-10.1)	6.45	(3.14-13.2)	6.39	(2.81-14.6)	2.06	(1.05-4.01)	1.23	(0.64-2.36)	0.60	(0.29-1.24)	
50-99	4.17	(2.44-7.15)	4.68	(2.14-10.2)	3.21	(1.24-8.32)	0.95	(0.38-2.35)	1.55	(0.78-3.07)	0.70	(0.32-1.54)	
100-199	1.80	(1.04-3.11)	2.37	(1.10-5.12)	3.42	(1.47-7.94)	1.58	(0.82-3.05)	1.48	(0.82-2.66)	0.44	(0.22-0.91)	
200-349	1.14	(0.67-1.93)	1.84	(0.88-3.85)	2.03	(0.89-4.65)	0.70	(0.35-1.38)	1.02	(0.58-1.81)	0.58	(0.32-1.05)	
350-499	1.00	-	1.00	-	1.00	-	1.00	-	1.00	-	1.00	-	
>500	0.15	(0.03-0.64)	0.68	(0.21-2.21)	0.85	(0.25-2.92)	0.87	(0.36-2.07)	2.26	(1.23-4.15)	1.07	(0.56-2.05)	
CD4 cell count [cells/μl]*	(242 KS/101742 patients) (142 KS/101335 patients) (119 KS/99024 patients) (103 KS/93051 patients) (164 KS/81135 patients) (100 KS/51448 patients)												<0.01
<50	5.93	(3.75-9.38)	7.42	(4.11-13.4)	12.92	(6.51-25.7)	14.11	(7.15-27.9)	13.73	(8.00-23.6)	20.20	(10.5-38.8)	
50-99	3.95	(2.39-6.55)	5.15	(2.81-9.41)	3.85	(1.72-8.60)	6.11	(2.88-13.0)	6.87	(3.66-12.9)	5.64	(2.24-14.2)	
100-199	2.60	(1.63-4.15)	2.44	(1.37-4.36)	3.65	(1.95-6.80)	1.84	(0.91-3.70)	2.53	(1.46-4.39)	4.28	(2.22-8.27)	
200-349	1.52	(0.96-2.40)	1.39	(0.78-2.46)	1.65	(0.87-3.13)	0.99	(0.51-1.93)	1.47	(0.92-2.36)	1.37	(0.71-2.64)	
350-499	1.00	-	1.00	-	1.00	-	1.00	-	1.00	-	1.00	-	
>500	0.37	(0.17-0.81)	0.68	(0.33-1.40)	1.13	(0.58-2.21)	1.04	(0.57-1.89)	0.58	(0.36-0.93)	0.53	(0.29-0.98)	
HIV RNA at start cART [copies/mL]	(269 KS/109461 patients) (149 KS/105990 patients) (123 KS/101944 patients) (106 KS/94762 patients) (168 KS/81776 patients) (101 KS/51674 patients)												<0.001
≥100,000	6.65	(3.12-14.2)	5.92	(2.40-14.6)	3.81	(1.53-9.49)	2.15	(0.97-4.77)	1.80	(1.00-3.25)	0.94	(0.49-1.79)	
10,001-99,999	2.45	(1.11-5.41)	2.30	(0.89-5.92)	2.60	(1.02-6.63)	1.73	(0.76-3.91)	1.28	(0.69-2.37)	1.11	(0.58-2.12)	
501-9,999	1.00	-	1.00	-	1.00	-	1.00	-	1.00	-	1.00	-	
≤500	1.15	(0.24-5.55)	2.10	(0.50-8.81)	0.78	(0.09-6.65)	1.04	(0.22-5.04)	0.31	(0.04-2.39)	-	-	
HIV RNA [copies/mL]*	(222 KS/98458 patients) (134 KS/98557 patients) (122 KS/96769 patients) (98 KS/91286 patients) (162 KS/79992 patients) (101 KS/51255 patients)												<0.001
≥100,000	2.58	(1.78-3.72)	3.12	(1.96-4.95)	3.84	(2.22-6.65)	7.01	(4.10-12.0)	12.06	(7.93-18.4)	26.03	(16.4-41.3)	
10,001-99,999	1.12	(0.71-1.76)	0.86	(0.43-1.75)	2.06	(1.13-3.76)	2.74	(1.51-4.96)	5.42	(3.57-8.22)	4.03	(2.14-7.57)	
501-9,999	1.30	(0.91-1.88)	1.13	(0.72-1.78)	1.50	(0.90-2.51)	1.10	(0.57-2.12)	2.59	(1.63-4.12)	2.87	(1.52-5.41)	
≤500	1.00	-	1.00	-	1.00	-	1.00	-	1.00	-	1.00	-	
Late presentation	(262 KS/103729 patients) (143 KS/100444 patients) (118 KS/96605 patients) (102 KS/89838 patients) (157 KS/77630 patients) (98 KS/48973 patients)												<0.001
No	1.00	-	1.00	-	1.00	-	1.00	-	1.00	-	1.00	-	
Yes	4.18	(2.95-5.93)	2.73	(1.80-4.13)	1.81	(1.20-2.74)	1.16	(0.77-1.75)	1.05	(0.75-1.46)	0.69	(0.46-1.03)	
First-line cART regimen	(269 KS/109461 patients) (149 KS/105990 patients) (123 KS/101944 patients) (106 KS/94762 patients) (168 KS/81776 patients) (101 KS/51674 patients)												0.10
Nonboosted PIs	0.63	(0.44-0.88)	1.13	(0.73-1.74)	1.37	(0.85-2.20)	1.31	(0.81-2.10)	1.20	(0.82-1.75)	1.40	(0.85-2.29)	
Boosted PIs	1.00	-	1.00	-	1.00	-	1.00	-	1.00	-	1.00	-	
NNRTI without PIs	0.56	(0.42-0.73)	0.92	(0.62-1.36)	0.93	(0.60-1.44)	0.88	(0.55-1.42)	0.85	(0.58-1.25)	0.64	(0.35-1.16)	
Other	0.38	(0.19-0.78)	1.03	(0.52-2.03)	0.90	(0.38-2.12)	0.41	(0.13-1.33)	0.41	(0.16-1.04)	0.47	(0.16-1.36)	
Calendar year of enrolment	(269 KS/109461 patients) (149 KS/105990 patients) (123 KS/101944 patients) (106 KS/94762 patients) (168 KS/81776 patients) (101 KS/51674 patients)												0.17
1996-2000	1.00	-	1.00	-	1.00	-	1.00	-	1.00	-	1.00	-	
2001-2005	1.23	(0.89-1.68)	0.80	(0.54-1.18)	1.13	(0.72-1.76)	0.62	(0.39-0.96)	0.85	(0.61-1.18)	0.60	(0.39-0.91)	
2006-2010	0.95	(0.67-1.34)	0.66	(0.43-1.02)	0.91	(0.56-1.48)	0.68	(0.42-1.10)	0.56	(0.35-0.90)	0.39	(0.09-1.64)	
2011-2014	1.70	(1.12-2.58)	0.91	(0.47-1.74)	0.75	(0.31-1.83)	-	-	-	-	-	-	

[#] All cases including those having missing values for other covariates have been used in this cox-regression model.

Abbreviations: cART, combination antiretroviral therapy; KS, Kaposi Sarcoma; CDC, United States Centers for Disease Control; NNRTI, Non-nucleoside reverse-transcriptase inhibitors; PI, Protease inhibitors; MSM, men having sex with men.

* Time-updated data; [§] P-value for change over time from test of interaction

Table S3. Risk Factors for Developing Kaposi Sarcoma by Time Periods Since Starting Combination Antiretroviral Therapy. Results from Univariable Cox Regression Model of Complete Cases.[#]

	30-90 days (201 KS/90789 patients)		91-180 days (130 KS/91646 patients)		6-12 months (116 KS/90511 patients)		1-2 years (93 KS/85735 patients)		2-5 years (156 KS/75503 patients)		5-8 years (94 KS/48498 patients)		p-value [§]
	HR	95% CI	HR	95% CI	HR	95% CI	HR	95% CI	HR	95% CI	HR	95% CI	
Exposure group													
MSM	3.37	(2.30-4.94)	1.55	(1.04-2.31)	1.74	(1.12-2.71)	1.73	(1.07-2.78)	2.39	(1.62-3.52)	2.92	(1.76-4.84)	0.20
Other men	1.00	-	1.00	-	1.00	-	1.00	-	1.00	-	1.00	-	
Women	0.75	(0.44-1.27)	0.44	(0.25-0.77)	0.55	(0.30-1.01)	0.54	(0.28-1.04)	0.59	(0.35-1.01)	0.41	(0.18-0.92)	
Origin													
European	1.00	-	1.00	-	1.00	-	1.00	-	1.00	-	1.00	-	0.77
African	0.81	(0.53-1.25)	1.09	(0.69-1.72)	1.21	(0.74-1.96)	1.10	(0.64-1.91)	0.93	(0.60-1.45)	0.67	(0.36-1.25)	
Other	0.77	(0.44-1.34)	1.34	(0.74-2.42)	0.62	(0.27-1.44)	1.00	(0.43-2.33)	0.93	(0.48-1.80)	0.60	(0.22-1.66)	
Age group [years]*													
16-30	1.00	-	1.00	-	1.00	-	1.00	-	1.00	-	1.00	-	<0.01
31-40	1.29	(0.83-2.02)	2.54	(1.33-4.84)	1.60	(0.88-2.90)	1.45	(0.70-3.03)	0.97	(0.56-1.66)	0.61	(0.29-1.26)	
41-50	1.76	(1.12-2.77)	2.16	(1.09-4.27)	1.31	(0.69-2.49)	1.72	(0.81-3.64)	0.85	(0.49-1.49)	0.29	(0.13-0.63)	
>50	2.05	(1.26-3.35)	3.31	(1.65-6.66)	2.16	(1.12-4.15)	2.23	(1.02-4.88)	1.06	(0.59-1.91)	0.47	(0.22-1.02)	
CD4 cell count at start cART [cells/μl]													
<50	6.95	(3.97-12.2)	5.98	(2.90-12.4)	6.37	(2.79-14.5)	2.37	(1.17-4.82)	1.28	(0.65-2.51)	0.60	(0.29-1.27)	<0.001
50-99	5.03	(2.74-9.24)	4.07	(1.83-9.07)	3.28	(1.26-8.50)	0.97	(0.36-2.60)	1.69	(0.84-3.39)	0.75	(0.34-1.67)	
100-199	2.10	(1.14-3.90)	2.05	(0.93-4.52)	3.17	(1.35-7.41)	1.57	(0.77-3.20)	1.44	(0.79-2.65)	0.47	(0.23-0.97)	
200-349	1.27	(0.70-2.32)	1.72	(0.82-3.61)	2.02	(0.88-4.63)	0.77	(0.37-1.59)	1.06	(0.59-1.91)	0.59	(0.32-1.08)	
350-499	1.00	-	1.00	-	1.00	-	1.00	-	1.00	-	1.00	-	
> 500	0.20	(0.05-0.88)	0.69	(0.21-2.24)	0.86	(0.25-2.94)	1.02	(0.42-2.50)	2.41	(1.30-4.47)	1.07	(0.55-2.08)	
CD4 cell count [cells/μl]*													
<50	6.13	(3.64-10.3)	7.39	(3.93-13.9)	13.93	(7.02-27.7)	16.14	(8.09-32.2)	13.94	(7.96-24.4)	20.54	(10.5-40.3)	<0.01
50-99	4.37	(2.48-7.69)	5.17	(2.72-9.81)	4.04	(1.80-9.02)	5.65	(2.51-12.7)	7.03	(3.66-13.5)	4.06	(1.37-12.0)	
100-199	3.03	(1.81-5.09)	2.67	(1.46-4.88)	3.75	(2.01-7.00)	1.59	(0.74-3.41)	2.76	(1.58-4.82)	4.35	(2.21-8.57)	
200-349	1.74	(1.05-2.90)	1.45	(0.80-2.64)	1.54	(0.80-2.96)	1.07	(0.55-2.10)	1.51	(0.93-2.44)	1.47	(0.76-2.85)	
350-499	1.00	-	1.00	-	1.00	-	1.00	-	1.00	-	1.00	-	
> 500	0.41	(0.17-0.97)	0.77	(0.37-1.61)	1.07	(0.54-2.11)	0.93	(0.50-1.74)	0.60	(0.37-0.97)	0.54	(0.29-1.01)	
HIV RNA at start cART [copies/mL]													
≥100,000	7.06	(3.11-16.0)	5.82	(2.36-14.4)	3.72	(1.49-9.28)	2.47	(1.05-5.81)	1.93	(1.05-3.55)	1.10	(0.55-2.21)	<0.01
10,001-99,999	2.72	(1.16-6.37)	2.23	(0.87-5.75)	2.47	(0.97-6.30)	1.90	(0.79-4.55)	1.33	(0.71-2.52)	1.22	(0.61-2.47)	
501-9,999	1.00	-	1.00	-	1.00	-	1.00	-	1.00	-	1.00	-	
≤500	1.50	(0.30-7.43)	2.17	(0.52-9.11)	0.81	(0.09-6.97)	1.26	(0.25-6.24)	0.35	(0.05-2.67)	-	-	
HIV RNA [copies/mL]*													
≥100,000	2.65	(1.79-3.93)	3.18	(1.99-5.09)	3.86	(2.20-6.78)	7.72	(4.51-13.2)	12.38	(8.11-18.9)	26.37	(16.3-42.6)	<0.001
10,001-99,999	1.23	(0.77-1.98)	0.90	(0.44-1.81)	1.82	(0.96-3.48)	2.73	(1.48-5.04)	5.36	(3.51-8.19)	3.98	(2.06-7.67)	
501-9,999	1.50	(1.02-2.20)	1.17	(0.75-1.84)	1.45	(0.86-2.46)	1.06	(0.53-2.11)	2.32	(1.42-3.77)	2.86	(1.48-5.52)	
≤500	1.00	-	1.00	-	1.00	-	1.00	-	1.00	-	1.00	-	
Late presentation													
No	1.00	-	1.00	-	1.00	-	1.00	-	1.00	-	1.00	-	<0.001
Yes	3.78	(2.57-5.57)	2.43	(1.58-3.73)	1.78	(1.17-2.71)	1.23	(0.79-1.91)	1.01	(0.72-1.42)	0.66	(0.43-1.00)	
First-line cART regimen													
Nonboosted PI	0.52	(0.34-0.79)	1.11	(0.69-1.77)	1.36	(0.83-2.21)	1.39	(0.85-2.29)	1.20	(0.81-1.76)	1.36	(0.82-2.25)	<0.001
Boosted PI	1.00	-	1.00	-	1.00	-	1.00	-	1.00	-	1.00	-	
NNRTI without PIs	0.50	(0.37-0.69)	0.99	(0.65-1.50)	0.89	(0.57-1.40)	0.85	(0.51-1.42)	0.82	(0.55-1.22)	0.61	(0.33-1.13)	
Other	0.37	(0.16-0.85)	1.21	(0.60-2.40)	0.96	(0.40-2.28)	0.00	(0.00-0.00)	0.35	(0.13-0.97)	0.49	(0.17-1.44)	
Calendar year of enrolment													
1996-2000	1.00	-	1.00	-	1.00	-	1.00	-	1.00	-	1.00	-	0.07
2001-2005	1.47	(1.01-2.14)	0.83	(0.55-1.25)	1.15	(0.72-1.82)	0.54	(0.33-0.88)	0.87	(0.62-1.23)	0.58	(0.38-0.91)	
2006-2010	1.04	(0.69-1.57)	0.64	(0.40-1.03)	0.96	(0.58-1.60)	0.65	(0.39-1.08)	0.50	(0.30-0.85)	0.41	(0.10-1.72)	
2011-2014	1.62	(0.96-2.72)	1.00	(0.49-2.04)	0.82	(0.33-2.03)	-	-	-	-	-	-	

[#]Only cases with no missing values for any of the covariates (complete cases) have been used in this cox-regression model.

Abbreviations: cART, combination antiretroviral therapy; KS, Kaposi Sarcoma; CDC, United States Centers for Disease Control; NNRTI, Non-nucleoside reverse-transcriptase inhibitors; PI, Protease inhibitors; MSM, men having sex with men.

* Time-updated data; [§] P-value for change over time from test of interaction

Table S4. Kaposi Sarcoma Incidence Rates per 100,000 Person-Years and Hazard Ratios for Univariable and Multivariable Cox Regression Models in the First Eight Years Since Starting Combination Antiretroviral Therapy.

	Incidence rate*			Univariable cox regression*			Univariable cox regression (Complete cases)*			Multivariable Cox Regression*		
	KS	pyrs	Rate (95% CI)	HR (95% CI)	p-value [§]	HR (95% CI)	p-value [§]	HR (95% CI)	p-value [§]	HR (95% CI)	p-value [§]	
				(916 KS/109461 patients)			(790 KS/100022 patients)			(790 KS/100022 patients)		
Total	916	501700	183 (171.1-194.8)	-	-	-	-	-	-	-	-	
Exposure group												
MSM	554	177000	313 (287.9-340.1)	2.24 (1.90-2.63)	<0.001	2.22 (1.86-2.65)	<0.001	4.02 (3.32-4.87)	<0.001			
Other men	211	155600	136 (118.5-155.2)	1.00	-	1.00	-	1.00	-			
Women	107	142200	75 (62.26-90.95)	0.54 (0.43-0.68)		0.53 (0.41-0.69)		0.63 (0.49-0.82)				
Origin												
European	713	391400	182 (169.3-196.1)	1.00	-	0.32	1.00	-	0.59	1.00	-	<0.01
African	146	74000	197 (167.8-232.2)	0.97 (0.81-1.17)		0.95 (0.77-1.16)		2.06 (1.64-2.59)				
Other	57	36400	157 (120.8-203.0)	0.81 (0.61-1.07)		0.85 (0.63-1.14)		0.98 (0.72-1.32)				
Age group [years]*												
16-30	102	56700	180 (148.2-218.5)	1.00	-	<0.001	1.00	-	<0.001	1.00	-	<0.01
31-40	358	187000	192 (172.6-212.4)	1.41 (1.13-1.76)		1.44 (1.12-1.85)		1.17 (0.92-1.49)				
41-50	265	162900	163 (144.2-183.5)	1.35 (1.07-1.70)		1.41 (1.09-1.82)		1.08 (0.83-1.39)				
>50	191	95200	201 (174.1-231.2)	1.70 (1.33-2.16)		1.88 (1.43-2.46)		1.53 (1.17-2.00)				
CD4 cell count at start cART [cells/μl]												
<50	224	61000	367 (322.0-418.4)	3.20 (2.49-4.10)	<0.001	3.20 (2.46-4.17)	<0.001	-	-	-	-	
50-99	105	40400	260 (214.6-314.6)	2.27 (1.71-3.02)		2.33 (1.73-3.15)		-	-	-	-	
100-199	155	85300	182 (155.3-212.8)	1.57 (1.21-2.05)		1.54 (1.17-2.04)		-	-	-	-	
200-349	188	145900	129 (111.7-148.7)	1.06 (0.83-1.37)		1.09 (0.84-1.43)		-	-	-	-	
350-499	87	67700	129 (104.1-158.5)	1.00	-	1.00	-	-	-	-	-	
> 500	62	47400	131 (101.9-167.7)	1.04 (0.75-1.45)		1.15 (0.82-1.60)		-	-	-	-	
CD4 cell count [cells/μl]*												
<50	164	8840	1855 (1592-2162)	9.42 (7.42-12.0)	<0.001	9.50 (7.34-12.3)	<0.001	7.90 (5.98-10.4)	<0.001			
50-99	100	11600	860 (706.5-1046)	5.05 (3.87-6.59)		5.07 (3.80-6.75)		4.72 (3.51-6.34)				
100-199	163	40900	398 (341.5-464.2)	2.81 (2.23-3.55)		2.83 (2.20-3.63)		2.86 (2.22-3.69)				
200-349	186	101400	183 (158.9-211.8)	1.46 (1.16-1.82)		1.46 (1.15-1.85)		1.48 (1.16-1.88)				
350-499	131	119500	110 (92.35-130.1)	1.00	-	1.00	-	1.00	-			
> 500	126	208800	60 (50.67-71.85)	0.65 (0.51-0.83)		0.61 (0.47-0.80)		0.61 (0.46-0.79)				
HIV RNA at cART start [copies/mL]												
≥100,000	460	186000	247 (225.7-271.0)	2.94 (2.19-3.95)	<0.001	3.10 (2.27-4.24)	<0.001	-	-	-	-	
10,001-99,999	236	160300	147 (129.6-167.3)	1.71 (1.26-2.33)		1.78 (1.29-2.46)		-	-	-	-	
501-9,999	49	54500	90 (67.95-119.0)	1.00	-	1.00	-	-	-	-	-	
≤500	9	12700	71 (36.99-136.6)	0.72 (0.35-1.46)		0.83 (0.41-1.70)		-	-	-	-	
HIV RNA [copies/mL]*												
≥100,000	204	21700	941 (820.7-1080)	5.87 (4.85-7.10)	<0.001	5.96 (4.87-7.30)	<0.001	2.76 (2.21-3.45)	<0.001			
10,001-99,999	113	37000	305 (253.9-367.1)	2.39 (1.92-2.97)		2.39 (1.90-3.02)		1.79 (1.41-2.28)				
501-9,999	158	60200	262 (224.5-306.6)	1.79 (1.48-2.18)		1.80 (1.46-2.21)		1.58 (1.28-1.95)				
≤500	364	366000	99 (89.75-110.2)	1.00	-	1.00	-	1.00	-			
Late presentation												
No	231	178100	130 (114.0-147.6)	1.00	-	<0.001	1.00	-	<0.01	-	-	
Yes	649	297500	218 (202.0-235.6)	1.79 (1.54-2.09)		1.64 (1.40-1.93)		-	-	-	-	
First-line cART regimen												
Nonboosted PI	253	134600	188 (166.1-212.6)	1.06 (0.89-1.25)	<0.001	1.05 (0.88-1.26)	<0.001	0.87 (0.69-1.08)	0.02			
Boosted PIs	334	148200	225 (202.5-250.9)	1.00	-	1.00	-	1.00	-			
NNRTI without PI	293	186900	157 (139.8-175.8)	0.74 (0.63-0.87)		0.72 (0.61-0.86)		0.82 (0.69-0.97)				
Other	36	32000	112 (81.09-155.8)	0.54 (0.38-0.77)		0.52 (0.36-0.76)		0.61 (0.42-0.89)				
Calendar year of enrolment												
1996-2000	336	188500	178 (160.2-198.4)	1.00	-	<0.01	1.00	-	<0.001	1.00	-	0.42
2001-2005	334	200100	167 (149.9-185.8)	0.87 (0.75-1.01)		0.89 (0.75-1.04)		1.06 (0.87-1.30)				
2006-2010	191	102900	186 (161.2-214.0)	0.72 (0.60-0.87)		0.71 (0.58-0.87)		0.92 (0.72-1.17)				
2011-2014	55	10200	537 (412.1-699.1)	1.03 (0.77-1.40)		0.94 (0.66-1.33)		1.16 (0.80-1.69)				

Abbreviations: pyrs, person-years; cART, combination antiretroviral therapy; KS, Kaposi Sarcoma; CI, Confidence Interval; NNRTI, Non-nucleoside reverse-transcriptase inhibitors; PI, Protease inhibitors; MSM, men having sex with men.

* Time-updated data [§]p-values from chi²-test; * Analysis is stratified by cohort, multivariable analysis adjusted for all covariates

Table S5. Additional Analysis including Baseline CD4 Cell Count. Risk Factors for Developing Kaposi Sarcoma by Time Periods Since Starting Combination Antiretroviral Therapy. Results from Multivariable Cox Regression Models.[#]

	30-90 days (197 KS/87178 patients)		91-180 days (122 KS/85832 patients)		6-12 months (105 KS/83518 patients)		1-2 years (88 KS/78327 patients)		2-5 years (145 KS/68311 patients)		5-8 years (90 KS/43670 patients)		p-value ^{&}
	HR	95% CI	HR	95% CI	HR	95% CI	HR	95% CI	HR	95% CI	HR	95% CI	
Exposure group													
MSM	6.11	(4.04-9.24)	2.70	(1.73-4.23)	3.24	(1.96-5.36)	2.70	(1.59-4.60)	4.17	(2.68-6.50)	4.33	(2.44-7.66)	0.28
Heterosexual men	1.00	-	1.00	-	1.00	-	1.00	-	1.00	-	1.00	-	
Women	0.87	(0.50-1.51)	0.54	(0.30-0.98)	0.53	(0.27-1.03)	0.66	(0.34-1.29)	0.58	(0.32-1.05)	0.40	(0.17-0.93)	
Origin													
European	1.00	-	1.00	-	1.00	-	1.00	-	1.00	-	1.00	-	0.96
African	2.12	(1.29-3.47)	2.10	(1.24-3.58)	2.49	(1.40-4.43)	2.10	(1.12-3.93)	1.93	(1.13-3.29)	1.93	(0.94-3.94)	
Other	0.87	(0.49-1.52)	1.50	(0.80-2.81)	0.65	(0.26-1.63)	1.10	(0.43-2.79)	1.04	(0.52-2.09)	0.82	(0.29-2.32)	
Age group [years]*													
16-30	1.00	-	1.00	-	1.00	-	1.00	-	1.00	-	1.00	-	0.19
31-40	0.97	(0.62-1.53)	2.20	(1.08-4.49)	1.46	(0.74-2.85)	1.27	(0.60-2.67)	1.08	(0.60-1.91)	0.62	(0.29-1.31)	
41-50	1.27	(0.80-2.01)	2.06	(0.98-4.35)	1.34	(0.65-2.72)	1.66	(0.77-3.59)	0.97	(0.53-1.78)	0.33	(0.15-0.75)	
>50	1.38	(0.84-2.29)	3.35	(1.56-7.19)	2.28	(1.09-4.75)	2.26	(1.00-5.11)	1.42	(0.74-2.69)	0.69	(0.31-1.55)	
CD4 cell count at start cART [cells/μl]													
<50	5.32	(2.15-13.2)	1.79	(0.62-5.21)	2.05	(0.68-6.14)	0.55	(0.21-1.42)	0.37	(0.17-0.79)	0.32	(0.14-0.73)	<0.001
50-99	3.74	(1.54-9.08)	1.54	(0.53-4.46)	1.73	(0.56-5.38)	0.35	(0.11-1.07)	0.66	(0.31-1.40)	0.55	(0.24-1.28)	
100-199	1.45	(0.62-3.40)	1.22	(0.46-3.22)	2.27	(0.85-6.06)	0.99	(0.44-2.24)	0.82	(0.43-1.57)	0.43	(0.20-0.92)	
200-349	0.94	(0.44-2.01)	1.59	(0.71-3.55)	2.00	(0.84-4.76)	0.69	(0.33-1.46)	0.92	(0.51-1.67)	0.65	(0.35-1.22)	
350-499	1.00	-	1.00	-	1.00	-	1.00	-	1.00	-	1.00	-	
> 500	0.30	(0.06-1.55)	0.75	(0.21-2.62)	0.82	(0.23-2.84)	1.11	(0.44-2.78)	2.50	(1.33-4.69)	1.06	(0.54-2.09)	
CD4 cell count [cells/μl]*													
<50	1.41	(0.59-3.40)	4.78	(1.70-13.4)	11.05	(3.88-31.4)	13.75	(4.95-38.2)	12.80	(6.14-26.7)	11.02	(4.93-24.6)	<0.01
50-99	1.29	(0.56-2.97)	4.27	(1.67-11.0)	3.51	(1.24-9.96)	6.40	(2.39-17.1)	7.55	(3.52-16.2)	2.57	(0.81-8.14)	
100-199	1.61	(0.76-3.41)	2.49	(1.09-5.67)	3.00	(1.33-6.74)	1.58	(0.65-3.85)	3.29	(1.76-6.14)	3.94	(1.90-8.16)	
200-349	1.51	(0.78-2.89)	1.14	(0.59-2.22)	1.40	(0.70-2.84)	1.13	(0.56-2.29)	1.77	(1.07-2.93)	1.28	(0.64-2.56)	
350-499	1.00	-	1.00	-	1.00	-	1.00	-	1.00	-	1.00	-	
> 500	0.61	(0.22-1.70)	0.92	(0.39-2.12)	1.37	(0.64-2.91)	0.66	(0.33-1.34)	0.43	(0.26-0.73)	0.49	(0.26-0.94)	
HIV RNA viral loads [copies/mL]*													
\geq 100,000	1.63	(1.06-2.49)	1.82	(1.07-3.10)	2.07	(1.07-4.02)	2.63	(1.30-5.34)	3.48	(2.00-6.04)	7.88	(4.19-14.8)	<0.01
10,001-99,999	1.18	(0.72-1.92)	0.78	(0.38-1.61)	1.43	(0.68-3.02)	1.98	(0.99-3.96)	2.72	(1.65-4.46)	1.97	(0.96-4.07)	
501-9,999	1.17	(0.79-1.73)	0.91	(0.55-1.51)	1.38	(0.76-2.52)	0.96	(0.46-2.00)	1.92	(1.14-3.25)	2.22	(1.11-4.45)	
\leq 500	1.00	-	1.00	-	1.00	-	1.00	-	1.00	-	1.00	-	
First-line cART regimen													
Nonboosted PI	0.53	(0.31-0.91)	0.75	(0.41-1.37)	1.46	(0.76-2.80)	0.87	(0.46-1.64)	1.11	(0.68-1.83)	0.85	(0.46-1.60)	0.18
Boosted PI	1.00	-	1.00	-	1.00	-	1.00	-	1.00	-	1.00	-	
NNRTI without PI	0.66	(0.47-0.92)	1.05	(0.68-1.63)	0.97	(0.60-1.56)	0.84	(0.49-1.44)	0.82	(0.53-1.27)	0.54	(0.28-1.03)	
Other	0.58	(0.25-1.34)	1.50	(0.74-3.05)	1.28	(0.53-3.09)	-	-	0.38	(0.13-1.06)	0.47	(0.16-1.40)	
Calendar year of enrolment													
1996-2000	1.00	-	1.00	-	1.00	-	1.00	-	1.00	-	1.00	-	0.49
2001-2005	1.18	(0.75-1.86)	0.82	(0.49-1.36)	1.79	(0.97-3.30)	0.58	(0.32-1.05)	1.39	(0.89-2.16)	1.06	(0.61-1.87)	
2006-2010	0.89	(0.54-1.47)	0.68	(0.38-1.23)	1.56	(0.77-3.13)	0.69	(0.36-1.33)	0.85	(0.46-1.59)	0.89	(0.20-3.96)	
2011-2014	1.23	(0.67-2.23)	0.98	(0.43-2.24)	1.32	(0.45-3.88)	-	-	-	-	-	-	

[#] Only cases with no missing values for any of the covariates have been used in this cox-regression model. Results are stratified by cohort.

Abbreviations: cART, combination antiretroviral therapy; KS, Kaposi Sarcoma; NNRTI, Non-nucleoside reverse-transcriptase inhibitors; PI, Protease inhibitors; MSM, men having sex with men.

* Time-updated data; [&] P-value for change over time from test of interaction

Table S6. Additional Analysis including Late Presentation. Risk Factors for Developing Kaposi Sarcoma by Time Periods Since Starting Combination Antiretroviral Therapy. Results from Multivariable Cox Regression Models.[#]

	30-90 days (199 KS/88373 patients)		91-180 days (125 KS/88496 patients)		6-12 months (111 KS/86898 patients)		1-2 years (90 KS/82046 patients)		2-5 years (146 KS/72054 patients)		5-8 years (92 KS/46152 patients)		p-value ^{&}
	HR	95% CI	HR	95% CI	HR	95% CI	HR	95% CI	HR	95% CI	HR	95% CI	
Exposure group													
MSM	6.13 (4.05-9.26)		3.10 (1.98-4.87)		3.41 (2.08-5.60)		3.24 (1.89-5.55)		4.46 (2.86-6.94)		4.16 (2.38-7.26)		0.53
Heterosexual men	1.00	-	1.00	-	1.00	-	1.00	-	1.00	-	1.00	-	
Women	0.89 (0.52-1.54)		0.59 (0.33-1.06)		0.63 (0.33-1.20)		0.72 (0.37-1.41)		0.63 (0.35-1.13)		0.39 (0.17-0.90)		
Origin													
European	1.00	-	1.00	-	1.00	-	1.00	-	1.00	-	1.00	-	0.93
African	1.95 (1.19-3.19)		2.17 (1.28-3.67)		2.21 (1.24-3.94)		2.37 (1.26-4.45)		2.26 (1.35-3.80)		1.84 (0.91-3.74)		
Other	0.85 (0.48-1.49)		1.57 (0.86-2.87)		0.70 (0.30-1.63)		1.29 (0.55-3.06)		1.14 (0.58-2.23)		0.72 (0.26-2.02)		
Age group [years]*													
16-30	1.00	-	1.00	-	1.00	-	1.00	-	1.00	-	1.00	-	0.09
31-40	1.03 (0.66-1.61)		2.08 (1.05-4.10)		1.54 (0.81-2.92)		1.29 (0.61-2.70)		0.86 (0.49-1.49)		0.59 (0.28-1.24)		
41-50	1.36 (0.86-2.15)		1.88 (0.92-3.85)		1.26 (0.63-2.51)		1.69 (0.79-3.62)		0.77 (0.43-1.38)		0.32 (0.14-0.71)		
>50	1.45 (0.88-2.40)		3.03 (1.45-6.32)		2.15 (1.05-4.39)		2.27 (1.00-5.12)		1.19 (0.65-2.21)		0.57 (0.25-1.29)		
Late presentation													
No	1.00	-	1.00	-	1.00	-	1.00	-	1.00	-	1.00	-	0.54
Yes	2.09 (1.33-3.29)		1.16 (0.69-1.97)		0.94 (0.55-1.60)		0.72 (0.42-1.24)		0.68 (0.46-1.01)		0.52 (0.33-0.83)		
CD4 cell count [cells/μl]*													
<50	4.73 (2.61-8.58)		7.52 (3.61-15.7)		14.85 (6.74-32.7)		11.12 (4.72-26.2)		6.69 (3.34-13.4)		8.34 (3.81-18.3)		<0.001
50-99	3.30 (1.78-6.13)		5.51 (2.69-11.3)		3.98 (1.64-9.63)		5.23 (2.13-12.8)		5.50 (2.70-11.2)		2.23 (0.71-6.98)		
100-199	2.41 (1.37-4.24)		2.80 (1.43-5.50)		3.65 (1.83-7.27)		1.74 (0.77-3.92)		2.53 (1.38-4.65)		3.72 (1.82-7.58)		
200-349	1.46 (0.86-2.48)		1.50 (0.79-2.83)		1.64 (0.84-3.20)		1.21 (0.60-2.44)		1.48 (0.89-2.46)		1.32 (0.67-2.62)		
350-499	1.00	-	1.00	-	1.00	-	1.00	-	1.00	-	1.00	-	
> 500	0.46 (0.19-1.09)		0.70 (0.32-1.57)		1.04 (0.52-2.09)		0.81 (0.42-1.59)		0.58 (0.35-0.95)		0.52 (0.27-0.98)		
HIV RNA viral loads [copies/mL]*													
≥100,000	1.45 (0.96-2.21)		1.61 (0.96-2.71)		1.62 (0.83-3.17)		3.03 (1.53-6.00)		4.45 (2.58-7.69)		8.64 (4.69-15.9)		<0.001
10,001-99,999	1.06 (0.66-1.72)		0.62 (0.29-1.33)		1.42 (0.70-2.86)		2.08 (1.06-4.09)		3.45 (2.12-5.60)		2.04 (1.00-4.15)		
501-9,999	1.22 (0.83-1.81)		0.93 (0.57-1.52)		1.51 (0.86-2.65)		0.99 (0.48-2.05)		2.27 (1.36-3.79)		2.19 (1.10-4.37)		
≤500	1.00	-	1.00	-	1.00	-	1.00	-	1.00	-	1.00	-	
First-line cART regimen													
Nonboosted PI	0.51 (0.30-0.88)		0.78 (0.43-1.42)		1.64 (0.87-3.09)		0.85 (0.45-1.62)		1.07 (0.65-1.77)		0.93 (0.50-1.74)		0.11
Boosted PI	1.00	-	1.00	-	1.00	-	1.00	-	1.00	-	1.00	-	
NNRTI without PI	0.60 (0.43-0.83)		1.04 (0.67-1.61)		0.99 (0.62-1.58)		0.79 (0.47-1.34)		0.98 (0.64-1.50)		0.59 (0.31-1.12)		
Other	0.51 (0.22-1.17)		1.47 (0.72-2.96)		1.22 (0.51-2.93)		-	-	0.40 (0.14-1.12)		0.49 (0.17-1.46)		
Calendar year of enrolment													
1996-2000	1.00	-	1.00	-	1.00	-	1.00	-	1.00	-	1.00	-	0.52
2001-2005	1.23 (0.78-1.94)		0.78 (0.47-1.29)		1.91 (1.05-3.45)		0.62 (0.34-1.11)		1.23 (0.80-1.90)		1.06 (0.61-1.85)		
2006-2010	0.86 (0.52-1.43)		0.69 (0.38-1.23)		1.60 (0.81-3.17)		0.67 (0.35-1.30)		0.79 (0.43-1.48)		0.88 (0.20-3.95)		
2011-2014	1.23 (0.68-2.23)		1.04 (0.47-2.31)		1.52 (0.55-4.16)		-	-	-	-	-	-	

[#] Only cases with no missing values for any of the covariates have been used in this cox-regression model. Results are stratified by cohort.

Abbreviations: cART, combination antiretroviral therapy; KS, Kaposi Sarcoma; NNRTI, Non-nucleoside reverse-transcriptase inhibitors; PI, Protease inhibitors; MSM, men having sex with men.

* Time-updated data; [&] P-value for change over time from test of interaction

Table S7. Kaposi Sarcoma Incidence Rates per 100,000 Person-Years by Time Periods Since Starting Combination Antiretroviral Therapy: Published Studies

Study	Cohort	Region	Calendar years	Patients receiving cART [n]	CD4 cell count at cART start [cells/ μ l]	up to 90 days	91-180 days	6-12 months	1-2 years	> 2 years	> 5 years
Yanik et al. 2013	CNICS	USA	1996-2011	11,485	202 (61–338)		1342 [#]	348	164 ⁺		
Mocroft et al. 2004	EuroSIDA	Europe	1994-2003	2,968	207 (98-328)		670 [#]	~300	~300	120	
Lodi et al. 2010	Cascade	Europe, Canada, Australia	1986-2006	4,199 ^{&}	NR		~650 ^{&}		~150 ^{&}	~250 ^{&}	~350 ^{&}
Current analysis	COHERE in EuroCoord	Europe	1996-2014	109,235	229 (108-343)	1472	582	247	120	85 ⁺⁺	82 ⁺⁺

[#] Cut off definition for incident KS cases not reported; [&] only MSM; ⁺ censored at 10 years after cART start; ⁺⁺ censored at 8 years after cART start

Abbreviations: CNICS, CFAR Network of Integrated Clinical Systems; COHERE in EuroCoord, Collaboration of Observational HIV Epidemiological Research Europe; MSM, men having s

References

- Yanik EL, Napravnik S, Cole SR, Achenbach CJ, Gopal S, Olshan A, et al. Incidence and timing of cancer in HIV-infected individuals following initiation of combination antiretroviral therapy. *Clin Infect Dis* **2013**;57(5):756–64.
- Mocroft A, Kirk O, Clumeck N, Gargalianos-Kakolyris P, Trocha H, Chentsova N, et al. The changing pattern of Kaposi sarcoma in patients with HIV, 1994-2003: the EuroSIDA Study. *Cancer* **2004**;100(12):2644–54.
- Lodi S, Guiguet M, Costagliola D, Fisher M, de Luca A, Porter K, et al. Kaposi sarcoma incidence and survival among HIV-infected homosexual men after HIV seroconversion. *J Natl Cancer Inst* **2010**;102(11):784–92.