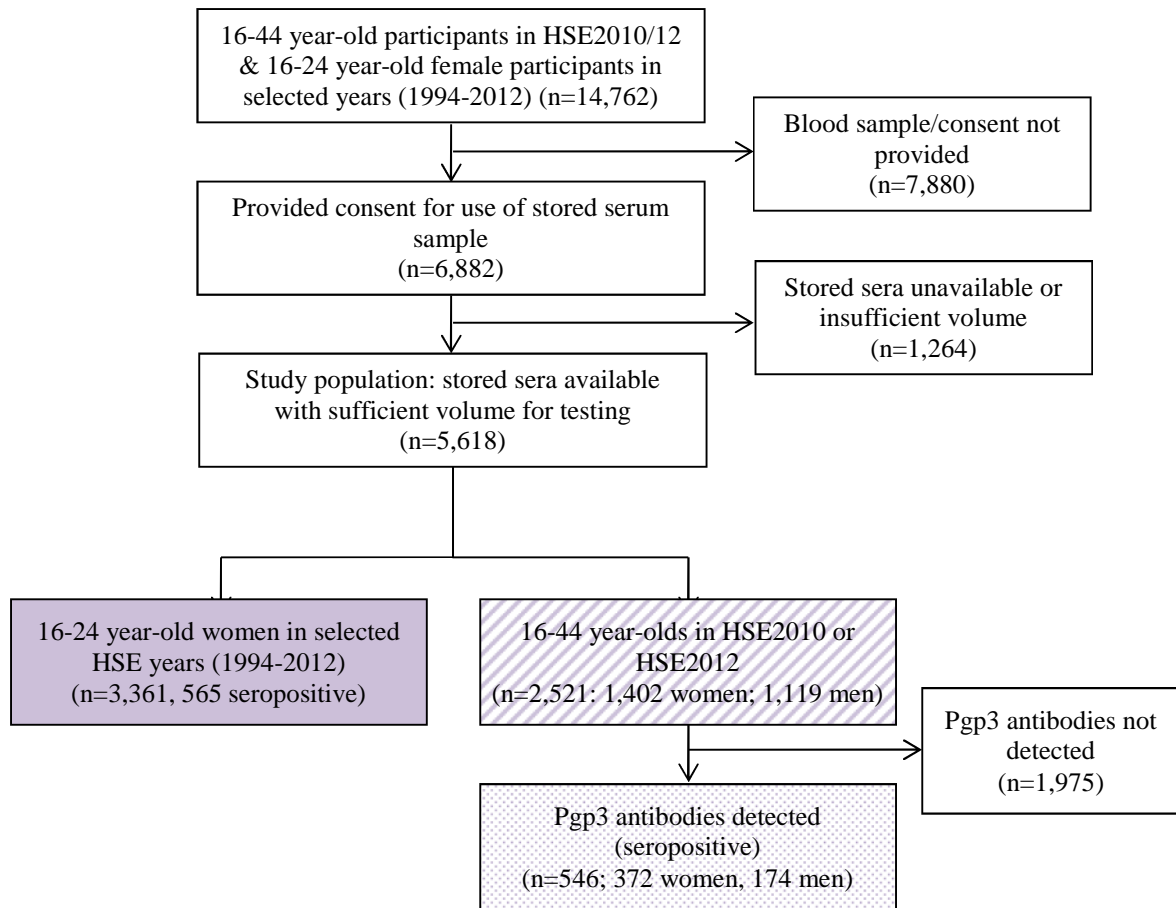
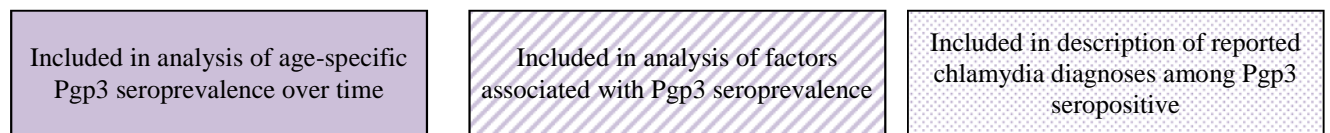


***Chlamydia trachomatis* Pgp3 antibody population seroprevalence before and during an era of widespread opportunistic chlamydia screening in England (1994-2012)**

**Supporting Figure 1: Flow chart showing selection of stored sera from Health Survey for England (HSE) participants and inclusion in analyses**



**Key**



Note: analysis groups are not mutually exclusive, therefore sum of number in each group is greater than total number tested (n=5,618).