

Appendix

Table 1. Immunological outcome following cART according to geographical origin from linear mixed-effects model, in men and in women

	Men		Women		Men		Women	
	Univariable analysis		Multivariable analysis ¹		Univariable analysis		Multivariable analysis ¹	
	Difference (95% CI) in mean increase in CD4+ T-cell count per month (square root scale)	p-value	Difference (95% CI) in mean increase in CD4+ T-cell count per month (square root scale)	p-value	Difference (95% CI) in mean increase in CD4+ T-cell count per month (square root scale)	p-value	Difference (95% CI) in mean increase in CD4+ T-cell count per month (square root scale)	p-value
0 - 6 months								
NAT	0		0		0		0	
WEWC	-0.02 (-0.06; 0.03)	0.46	-0.02 (-0.06; 0.03)	0.48	0.08 (-0.03; 0.20)	0.15	0.07 (-0.04; 0.18)	0.21
EE	-0.04 (-0.11; 0.02)	0.19	-0.02 (-0.08; 0.04)	0.53	-0.001 (-0.10; 0.10)	0.98	-0.002 (-0.10; 0.09)	0.97
NAME	0.04 (-0.02; 0.09)	0.16	0.03 (-0.02; 0.09)	0.20	0.06 (-0.05; 0.17)	0.29	0.04 (-0.07; 0.14)	0.47
SSA	-0.08 (-0.11; -0.05)	<0.001	-0.12 (-0.16; -0.09)	<0.001	-0.09 (-0.13; -0.06)	<0.001	-0.10 (-0.13; -0.06)	<0.001
LA	0.07 (0.04; 0.10)	<0.001	0.05 (0.02; 0.08)	0.002	0.06 (-0.01; 0.14)	0.08	0.03 (-0.04; 0.10)	0.45
CRB	0.05 (-0.02; 0.12)	0.14	0.04 (-0.03; 0.11)	0.28	-0.12 (-0.21; -0.03)	0.01	-0.09 (-0.18; 0.002)	0.056
ASIA/OCEANIA	0.02 (-0.04; 0.09)	0.44	0.03 (-0.03; 0.08)	0.39	0.17 (0.07; 0.26)	0.001	0.11 (0.02; 0.21)	0.02
Overall p-value		<0.001		<0.001		<0.001		<0.001
6 - onwards								
NAT	0		0		0		0	
WEWC	0.008 (-0.001; 0.02)	0.09	0.007 (-0.001; 0.02)	0.096	0.003 (-0.02; 0.03)	0.80	0.003 (-0.02; 0.03)	0.76
EE	0.02 (0.003; 0.03)	0.02	0.02 (0.003; 0.03)	0.02	0.03 (0.01; 0.05)	0.006	0.03 (0.01; 0.05)	0.001
NAME	0.01 (0.004; 0.03)	0.008	0.01 (0.003; 0.02)	0.01	0.004 (-0.02; 0.02)	0.67	0.004 (-0.02; 0.02)	0.67
SSA	-0.002 (-0.008; 0.004)	0.46	-0.01 (-0.01; -0.002)	0.01	-0.01 (-0.01; -0.0002)	0.04	-0.001 (-0.008; 0.006)	0.75
LA	0.006 (-0.0004; 0.01)	0.068	0.004 (-0.002; 0.01)	0.18	0.0004 (-0.01; 0.01)	0.95	-0.001 (-0.01; 0.01)	0.90
CRB	-0.004 (-0.02; 0.01)	0.58	-0.01 (-0.02; 0.01)	0.27	-0.02 (-0.04; 0.001)	0.07	-0.01 (-0.03; 0.01)	0.30
ASIA/OCEANIA	-0.005 (-0.02; 0.01)	0.38	-0.01 (-0.02; 0.004)	0.22	0.004 (-0.01; 0.02)	0.68	0.001 (-0.02; 0.02)	0.88
Overall p-value		0.005		<0.001		0.02		0.099

¹ Adjusted by transmission category (sex between men, IDU, sex between men and women), age at cART initiation, log₁₀ HIV-RNA at start of cART, pre-cART AIDS diagnosis, period of cART initiation (2004-2008, 2009-2013) and type of cART regimen (NNRTI, PI, other)

Figure 1. Predicted CD4⁺ T-cell count according to geographical origin, in men and in women

Men

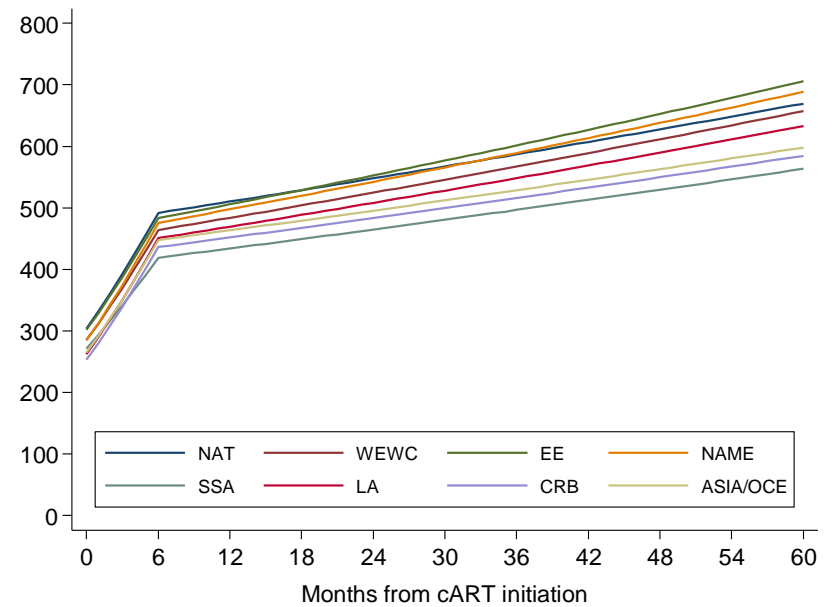
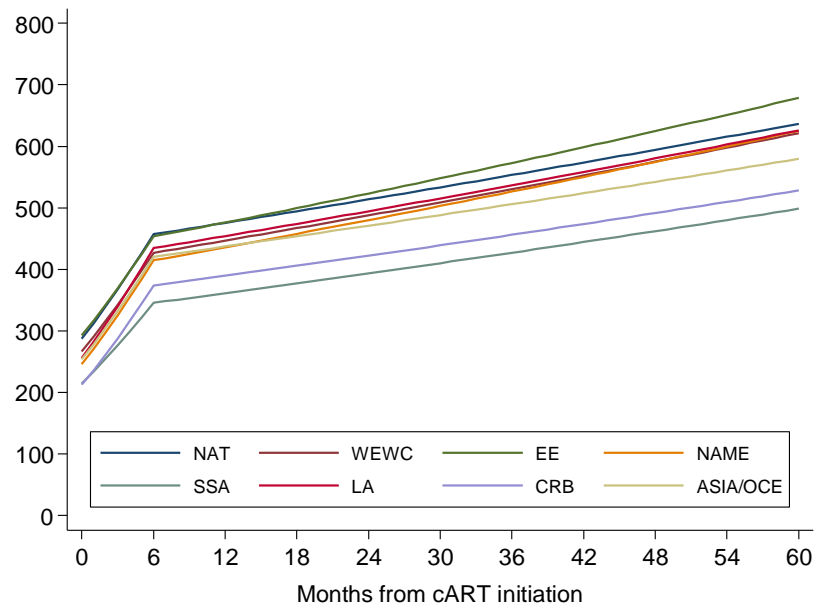
Univariable

Multivariable. Majority profile: Men, MSM, 30 years old at start of

cART, 5log10 HIV-RNA and AIDS-free at

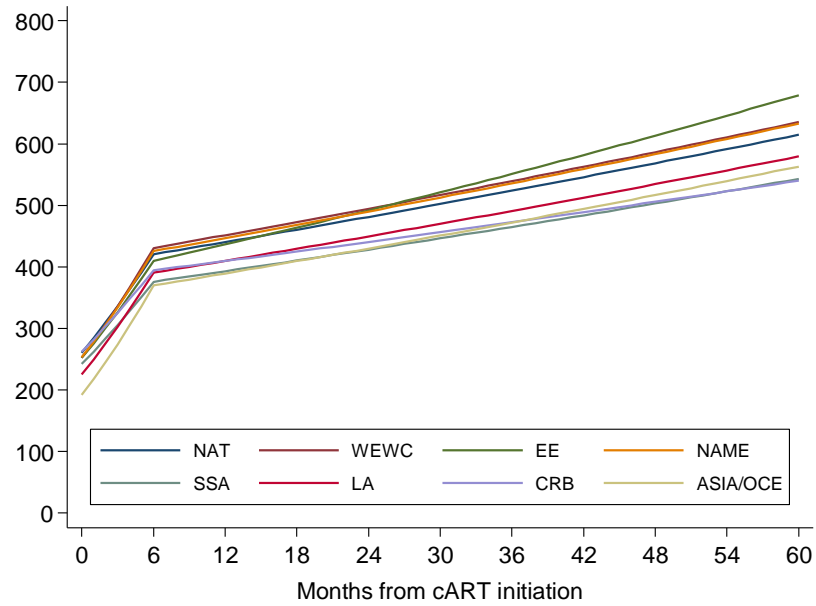
cART initiation, and cART initiated with

NNRTI in period 2004-2008



Women

Univariable



Multivariable. Majority profile: Women, HTX 30 years old at start of

cART, 5log10 HIV-RNA and AIDS-free at

cART initiation, and cART initiated with

NNRTI in period 2004-2008

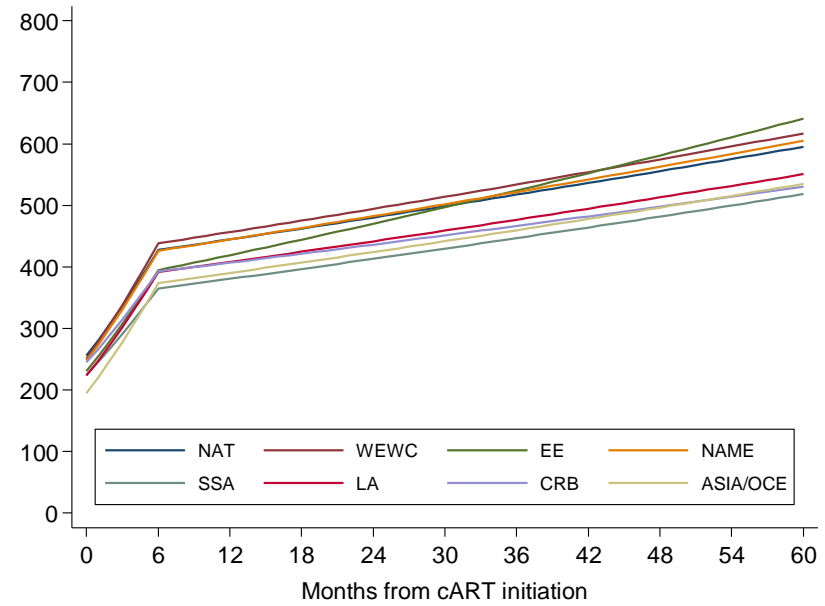
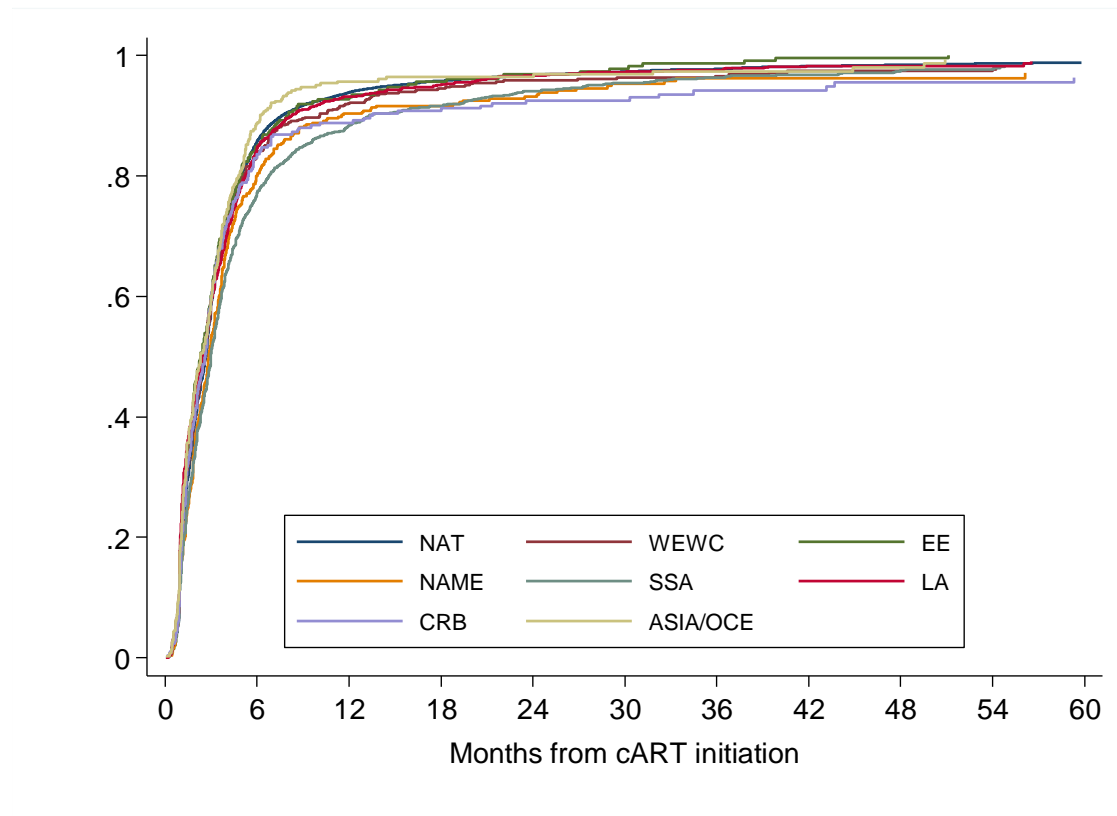


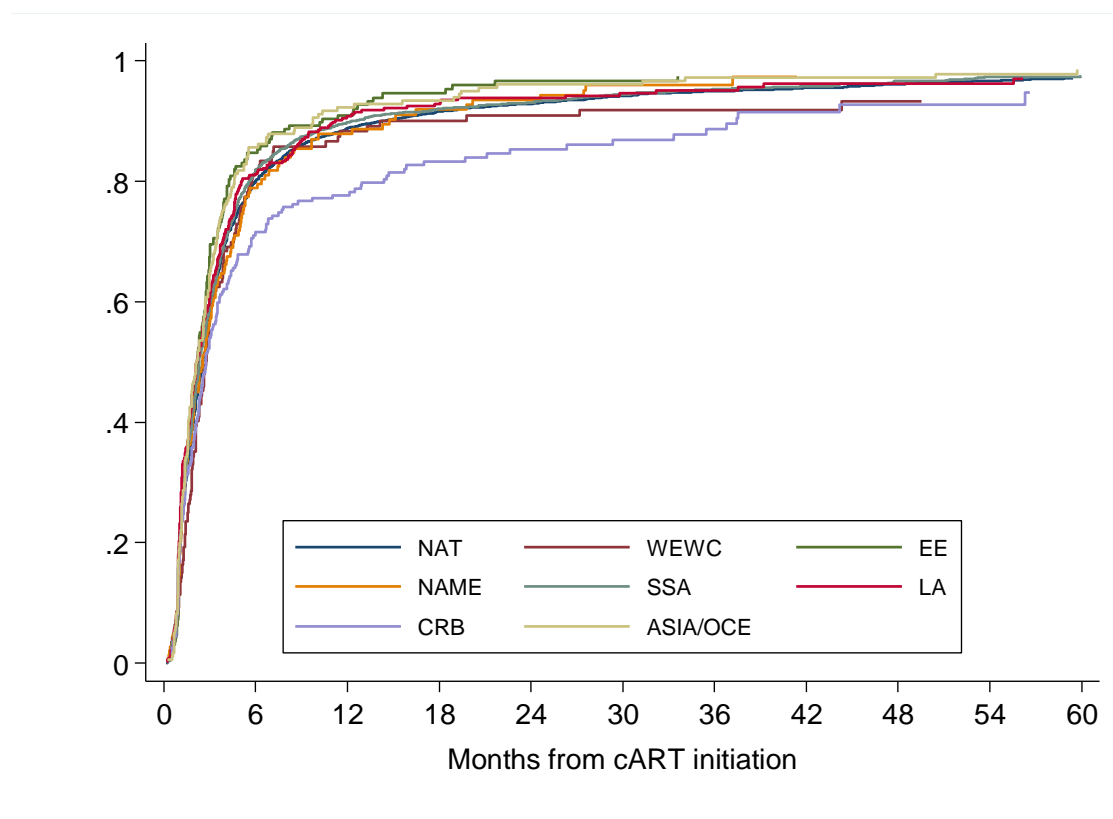
Figure 2. Cumulative incidence of virological response according to geographical origin, in men and in women

Men



Number at risk											
Cumulative Incidence of Virological Response											
NAT	20,340	2,694	1,009	626	435	308	214	143	99	70	46
	0%	85.7%	93.9%	95.8%	96.7%	97.3%	97.8%	98.2%	98.5%	98.7%	98.8%
WEWC	751	109	45	26	18	12	11	7	7	6	4
	0%	83.6%	92.1%	94.5%	95.9%	96.3%	96.6%	97.4%	97.4%	97.7%	98.3%
EE	342	48	18	10	7	5	3	1	1	0	0
	0%	84.9%	93.1%	95.6%	96.9%	97.8%	98.7%	99.6%	99.6%	100%	100%
NAME	482	86	37	28	19	11	6	4	3	3	2
	0%	80.0%	90.3%	91.7%	93.1%	95.3%	96.2%	96.2%	96.2%	96.2%	97.1%
SSA	1,632	345	153	95	58	39	29	24	15	10	7
	0%	77.2%	88.4%	91.6%	94.0%	95.4%	96.3%	96.8%	97.5%	97.7%	98.3%
LA	1,586	231	85	57	32	23	19	11	8	5	2
	0%	84.6%	93.1%	95.1%	96.6%	97.3%	97.6%	98.3%	98.3%	98.3%	99.1%
CRB	290	45	26	20	13	11	7	6	4	4	3
	0%	83.7%	88.8%	90.8%	92.5%	92.5%	94.2%	94.2%	95.6%	95.6%	96.3%
ASIA/OCE	376	39	13	9	8	7	5	4	3	1	1
	0%	88.7%	95.7%	96.5%	96.5%	96.9%	97.4%	97.4%	98.0%	99.3%	99.3%

Women



Number at risk

Cumulative Incidence of Virological Response

NAT	3,586	673	346	235	181	130	102	85	65	48	35
	0%	80.1%	88.8%	91.6%	92.8%	94.2%	95.0%	95.5%	96.1%	96.6%	97.1%
WEWC	141	24	14	12	9	8	5	5	3	2	2
	0%	81.9%	88.3%	90.0%	90.9%	91.8%	91.8%	91.8%	93.3%	93.3%	93.3%
EE	193	27	16	8	5	4	3	3	3	3	3
	0%	84.7%	90.9%	94.6%	96.6%	96.6%	97.5%	97.5%	97.5%	97.5%	97.5%
NAME	149	29	15	10	8	5	3	1	1	1	1
	0%	78.9%	87.8%	91.9%	93.5%	95.9%	95.9%	97.3%	97.3%	97.3%	97.3%
SSA	2,172	377	191	138	105	73	57	49	36	25	20
	0%	81.8%	89.8%	92.1%	93.1%	94.4%	95.3%	95.7%	96.6%	97.3%	97.5%
LA	370	65	26	19	15	11	8	6	5	5	2
	0%	81.3%	90.8%	92.8%	93.8%	94.7%	95.1%	96.2%	96.2%	96.2%	97.0%
CRB	226	62	42	26	19	15	11	6	4	3	1
	0%	71.5%	77.7%	83.3%	85.3%	86.9%	88.7%	91.4%	92.7%	92.7%	94.7%
ASIA/OCE	181	26	14	11	6	6	4	4	4	3	1
	0%	85.6%	92.3%	93.4%	96.1%	96.1%	97.2%	97.2%	97.2%	97.8%	98.6%