

## WPEG 2007

---

### Tax-Credit Policies for Low Income Families: Impact and Optimality

*July 2007*

Richard Blundell

and

Andrew Shephard

*University College London and  
Institute for Fiscal Studies*

### Tax-Credit Policies for Low Income Families

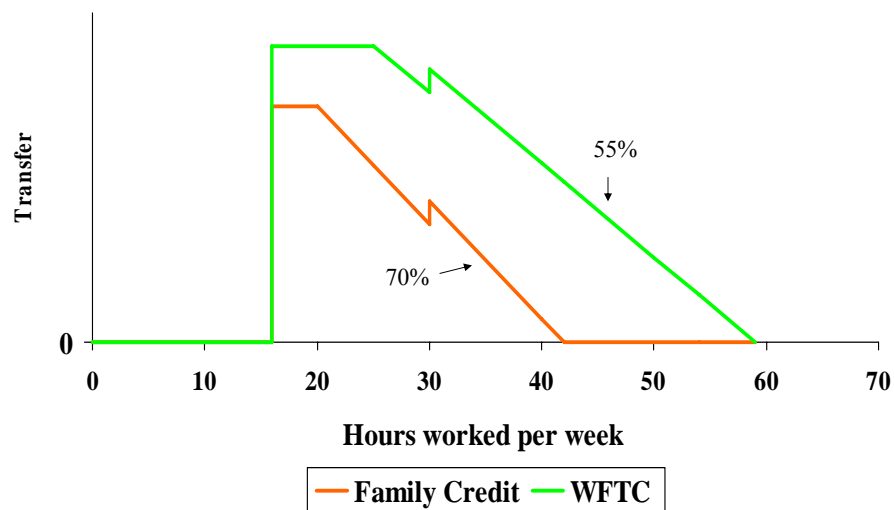
---

- This research concerns the impact of tax and tax-credit reform on working decisions.
- It looks at the *impact* and the '*optimal*' design
- Two questions:
  - How should we measure the impact of tax and tax-credits on work decisions?
  - How should we assess the optimality of tax and tax-credit proposals?
- Focus on single mothers and the UK reforms

## Tax Credit reforms in the UK

- Sequence of Tax Credit expansions
  - FC (family credit) before 2000, expanded early in 1990s
  - WFTC (working families tax credit) reform in 2000, and subsequent expansions in 2002
  - influenced by the success of the EITC expansion in the US
  - especially generous to families with young children
- WTC (working tax credit) and CTC (child tax credit) reform in 2004
  - extension of eligibility to individuals without children

## The WFTC Reform

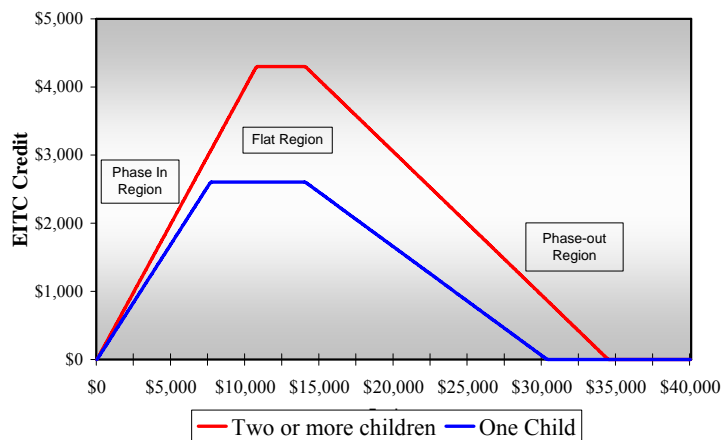


transfers per week for a min. wage lone parent

## General form of Earned Income Tax Credits

- Credit depends on *earnings* and *number of children*:
  - Phase-in: credit is flat percentage of earned income or jump in at minimum hours threshold
  - Flat range: receive maximum credit
  - Phase-out: credit is phased out at a flat rate
- Credit based on *family earnings*
  - Creating ‘interesting’ incentives among couples

## EITC Schedule in US – Single Parent Families, 2004

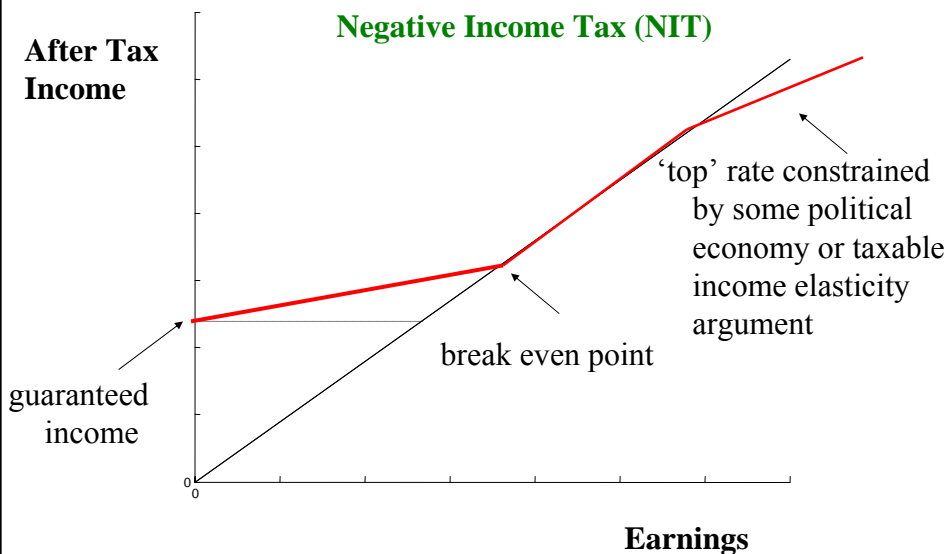


- Larger credit, covering higher earners for families with two or more children.

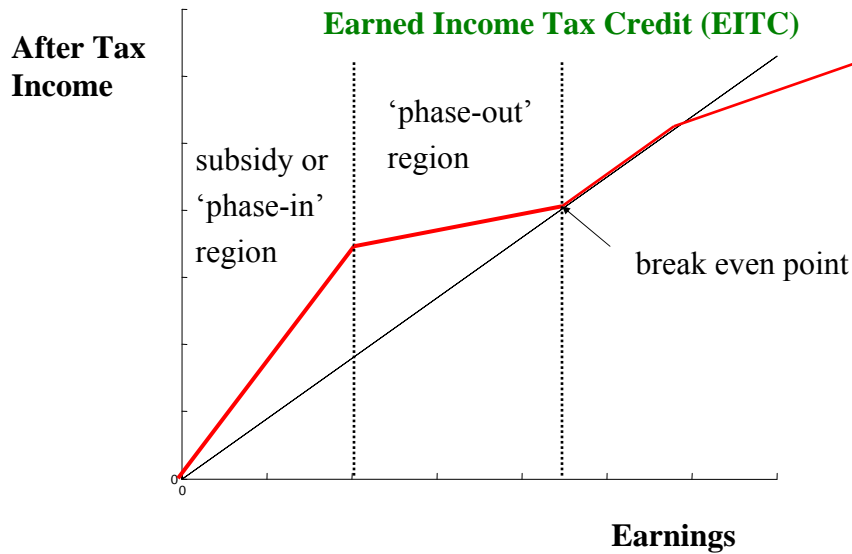
## Can a WFTC type design be 'optimal'?

- Does the WFTC represent an optimal transfer for low income families?
- New insights from optimal tax theory show some negative marginal tax rates can be an optimal design
- Labour supply estimation suggest extensive margin is more responsive to incentives than intensive margin
- This turns out to be a key observation for optimal tax design

## Tax Credit Policies for Low Income Families



## Tax Credit Policies for Low Income Families



## The Analysis of Tax Credit Policies

In the research design reported here, the analysis of tax-credit policy is tackled in two steps:

- The first step is a positive analysis of how household work decisions respond. There are two empirical approaches - both prove useful:
  - (a) A 'quasi-experimental' evaluation of the impact of historic reforms
  - (b) A 'structural' estimation of individual behaviour based on a general discrete choice model
- The second step is the normative analysis or optimal policy analysis

## A simple optimal design framework

---

- Two ‘new’ approaches
- solve directly given the microeconomic estimates of discrete choice behaviour and tax-benefit constraints
- take approximations in terms of underlying elasticities and welfare weights on different incomes – Diamond/Saez
- choose transfers and taxes ‘T’ to maximise welfare
- extend the standard Mirrlees framework to allow for responses at the extensive and intensive margin

## A (simple) optimal tax framework

---

Suppose  $U$  is the ‘utility’ of a single mother

$$U(c, h; X, \varepsilon)$$

from working  $h$  hours with net income  $c$ , where  $X$  are observable characteristics of her and her child and  $\varepsilon$  represents unobserved characteristics.

Budget constraint:

$$c \equiv wh - T(w, h; X)$$

Choose  $h$  from a set of discrete alternatives reflecting part-time work, full-time work etc.

## A simple optimal tax/tax-credit framework

---

Social welfare, for single parents of type  $X$

$$W = \sum_i \int \int \Gamma(u(w_i h_i - T(w_i, h_i; X), h_i^*; X, \varepsilon)) dF(\varepsilon) dG(w, X)$$

where  $\Gamma$  is the social welfare transformation.

The tax structure  $T(X)$  is chosen to maximise  $W$ ,  
subject to:

$$\sum_i \int \int T(w_i, h_i; X) dF(\varepsilon) dG(w, X) = \bar{T}(X) (= -R(X))$$

## Simplified expressions - for intuition

---

- Suppose we distinguish between earnings groups
  - ‘no’ earners: group 0
  - ‘higher’ earners groups  $i = 1, 2, \dots$
- Suppose the social welfare weight is higher for group 0, and monotonically decreasing
- Choose taxes (and transfers)  $T$  to maximise welfare
- Can derive expressions in terms of elasticities and social welfare weights across the income distribution

## Simplified expressions

Optimal design gives:

$$\frac{T_i - T_0}{c_i - c_0} = \frac{1 - g_i}{\zeta_i}$$

where

$\zeta_i$  is the labour supply elasticity

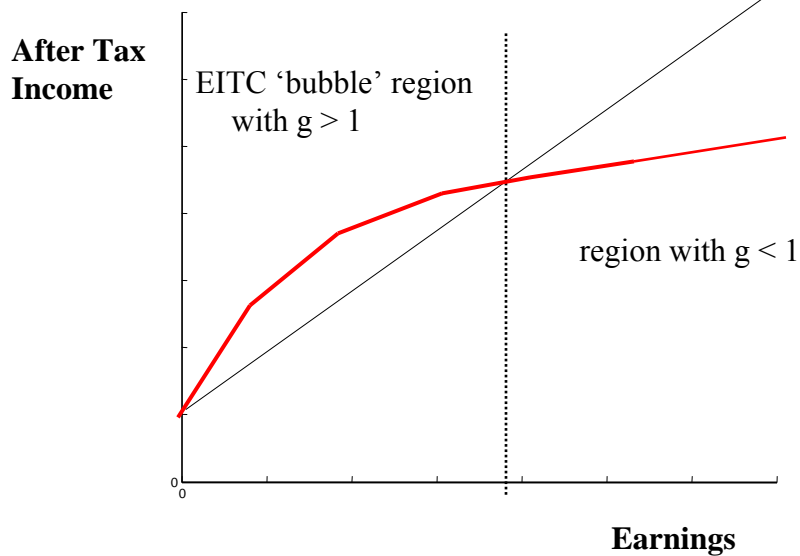
$-T_i$  is the subsidy given to group  $i$

$c_i$  is the net of tax income for that group

$g_i$  is the social welfare weight for group  $i$

and  $g_0 > 1$ , with the weighted sum of  $g$ 's = 1

## An Optimal Schedule





## Simplified expressions

---

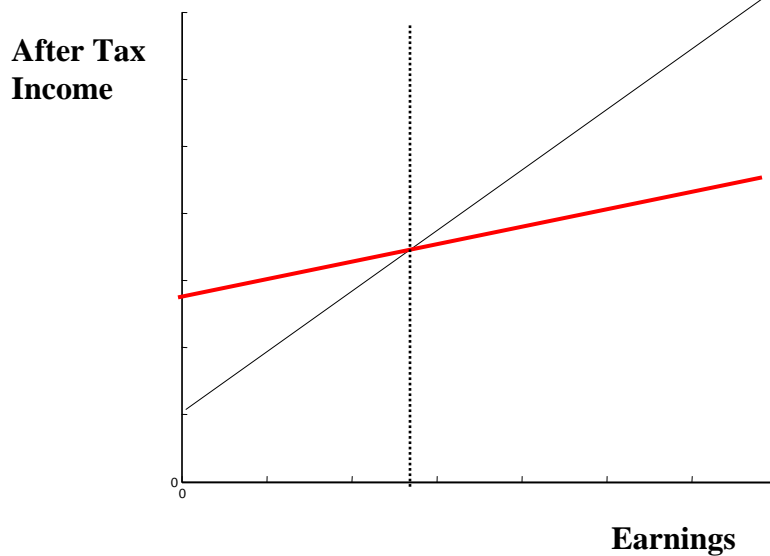
e.g. for two groups:

$$\frac{T_1 - T_0}{c_1 - c_0} = \frac{g_0 - 1}{\zeta_1}$$

which leads to a standard NIT

## An Optimal Schedule

---



## The intensive and extensive margin

Suppose we now introduce an intensive and extensive margin

$$\frac{T_i - T_{i-1}}{c_i - c_{i-1}} = \frac{1}{\zeta_i} \sum_{j=i}^I [1 - \hat{g}_j]$$

where

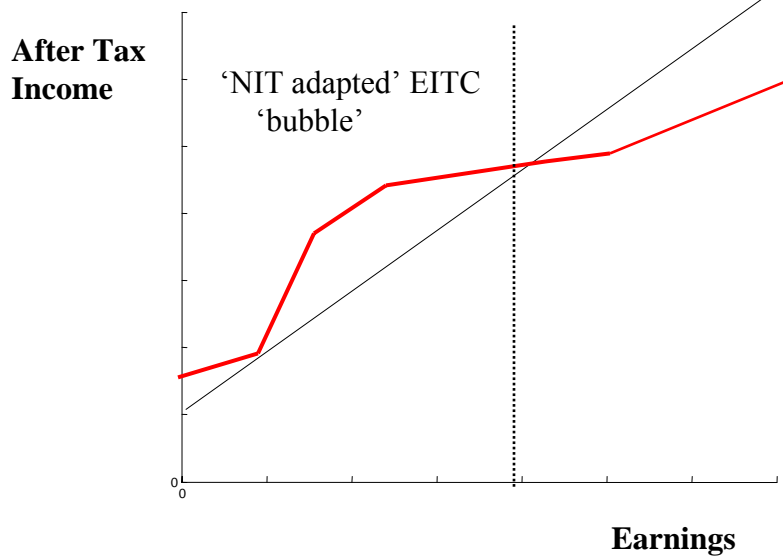
$$\hat{g}_j = g_j + \eta_j k,$$

$\zeta_i$  is the intensive elasticity

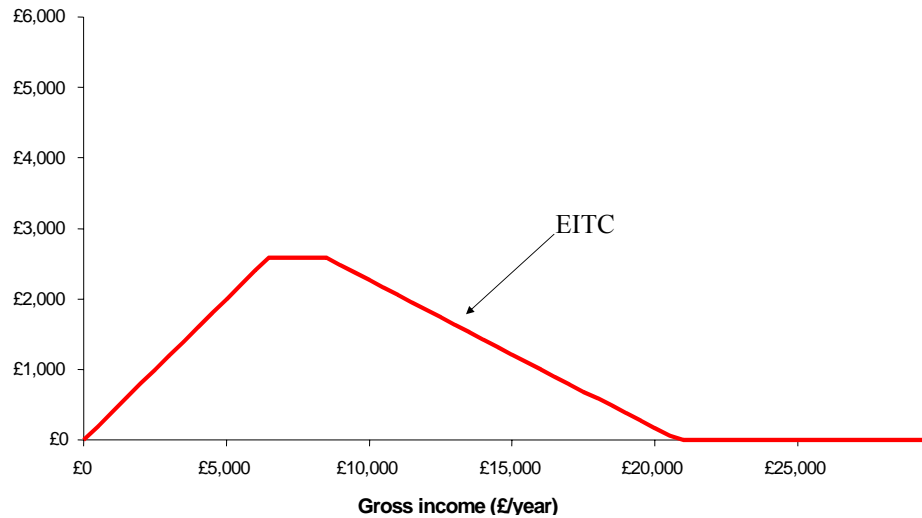
and  $\eta_j$  is the extensive elasticity

a 'large' extensive elasticity can 'turn around' the impact of social weights - implying a higher transfer to low wage workers than to those out of work – a tax-credit

## A 'Typical' Optimal Schedule



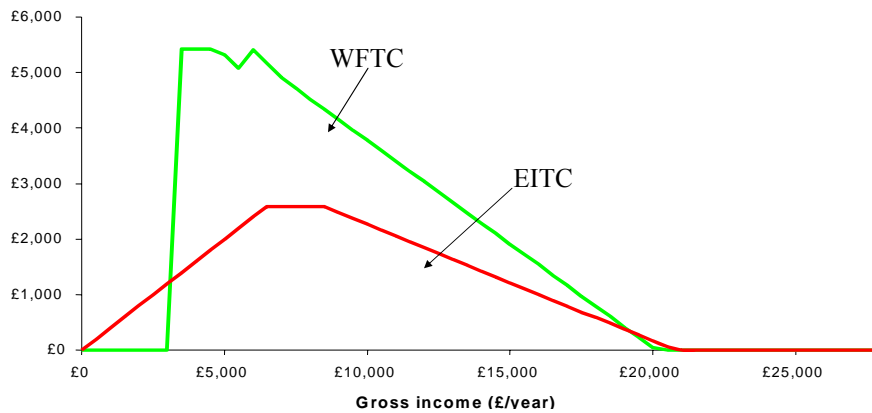
## The US Earned Income Tax Credit



## The WFTC design: eligibility criteria

- work eligibility
  - 16 or more hours per week
- family eligibility
  - children (in full time education or younger)
- income eligibility
  - if a family's net income is below a certain threshold, adult credit plus age-dependent amounts for each child
  - if income is above the threshold then the amount of credit is tapered away at 55% per extra pound of net income – previously 70%

## The UK and US tax credit systems compared



- A puzzle on the relative impact of WFTC and EITC

## The WFTC design

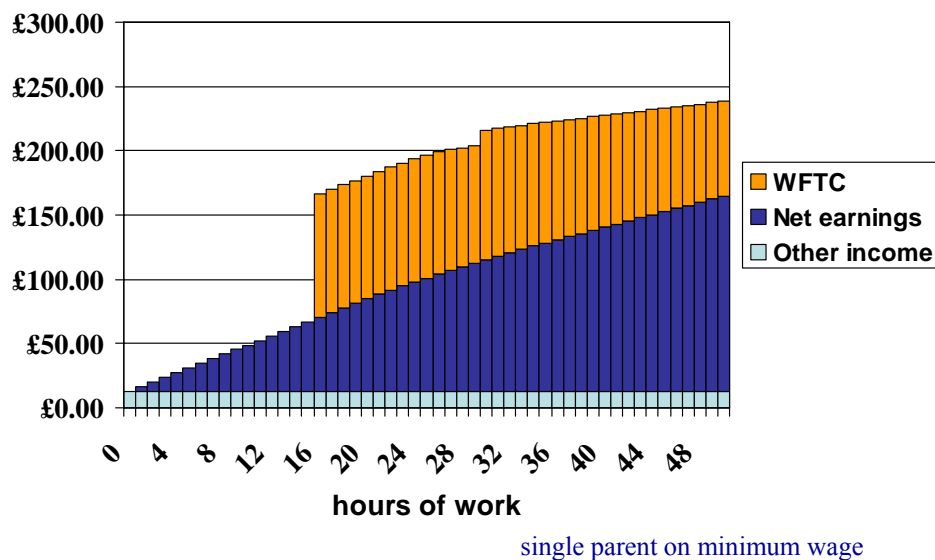
- Is this an 'optimal' design given efficiency and distributional considerations:
- Is an hours eligibility rule optimal?
- At what hours point should it be set?
- Is the overall structure of the WFTC optimal?

## Interactions with other taxes and benefits

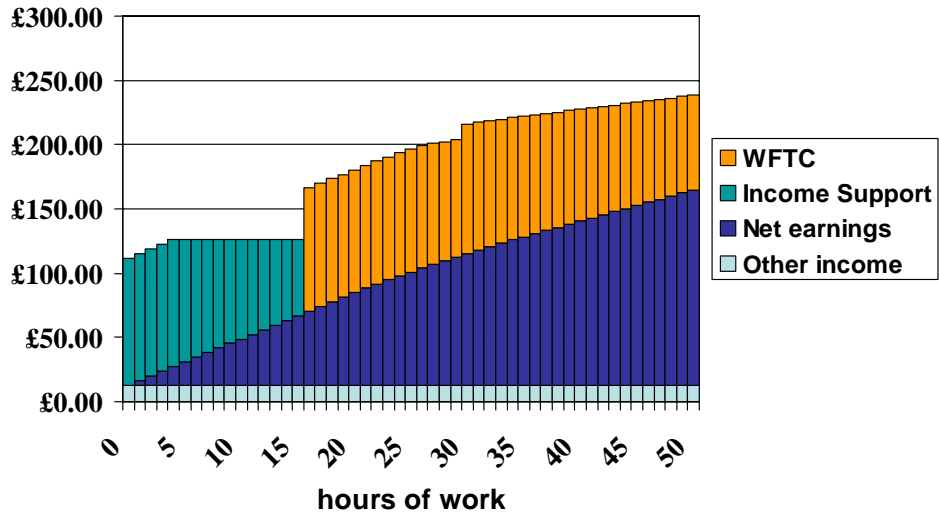
Unlike the US EITC the credit is based on net (rather than gross) family income

- interaction with other benefits and taxes matter
  - differing size of the ‘treatment’ across eligibles
- coincident reforms to Income Support (IS)
  - different direction of these reforms to US

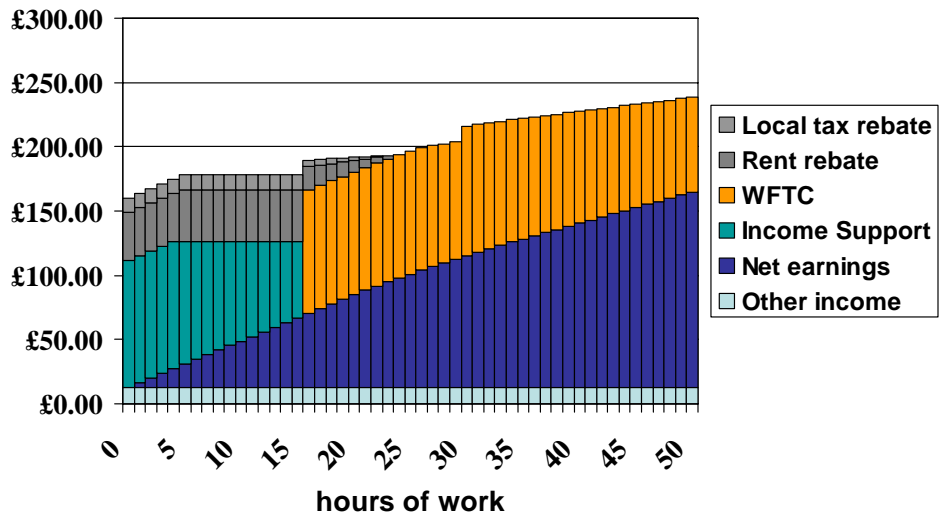
## WFTC interactions with other taxes and benefits in the UK



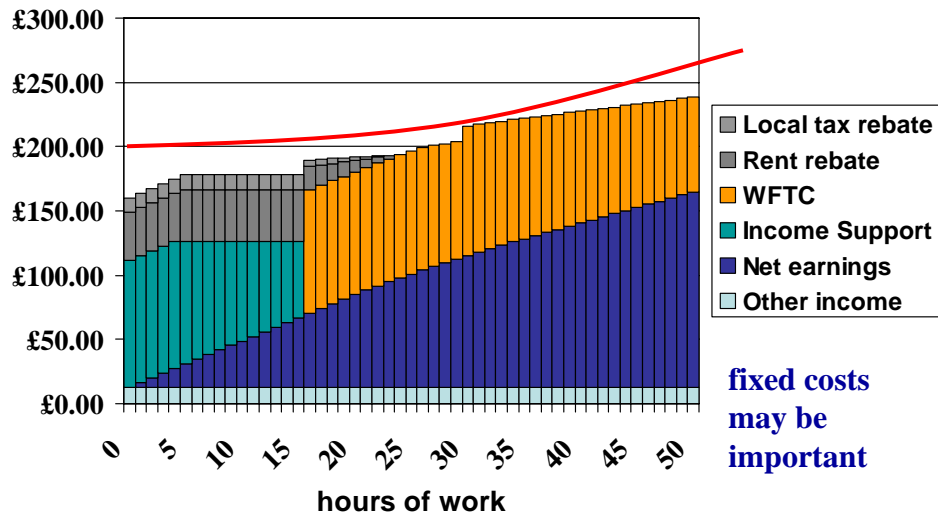
### WFTC interactions with other taxes and benefits in the UK



### WFTC interactions with other taxes and benefits in the UK



## The interaction with other benefits

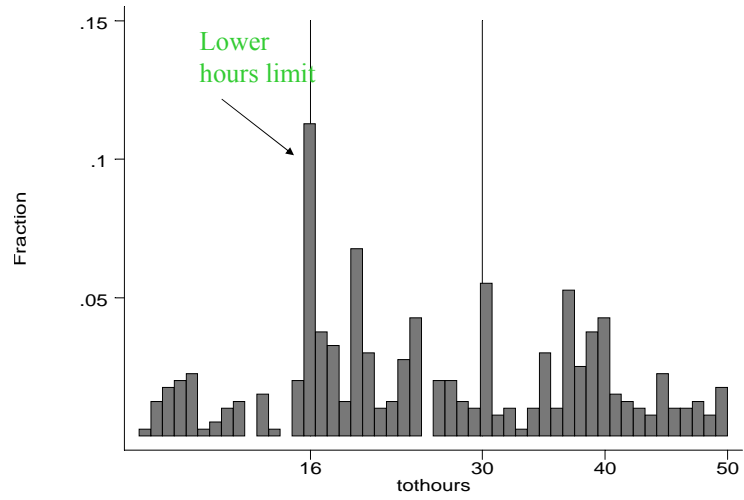


## Assessing the design

- Requires a reliable structural simulation model that captures decisions and the budget constraint accurately
- Two components:
  - budget constraint is approximated by number of discrete points.
  - choose hours of work according to discrete choice model with hours options:

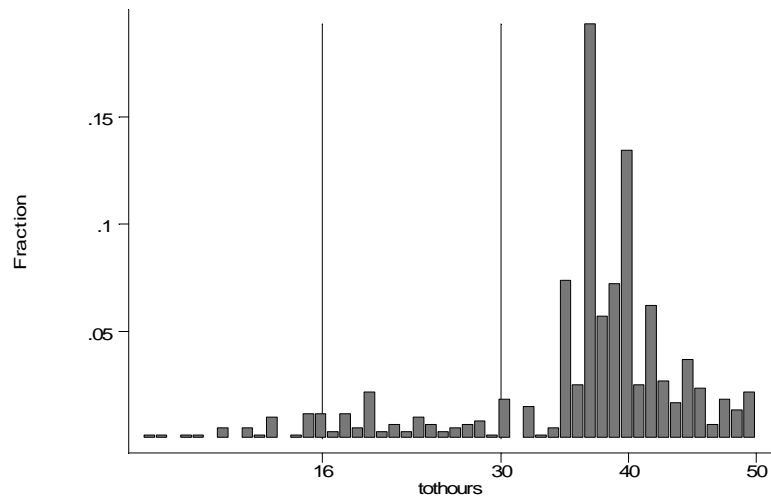
## Weekly Hours Worked

Low Education Single Mothers (aged 18-45)



## Weekly Hours Worked

Low Education Single Childless Women (aged 18-45)





## Key features of a 'realistic' structural model

---

- budget constraint that allows for tax/benefit interactions
- discrete decisions over hours worked
- heterogeneity – demographics, ethnicity,.., unobs. het.
- fixed costs of work – obs. and unobs. het.
- stigma/hassle costs – take-up versus eligibility
- childcare costs
- **do individuals behave this way?**

## Specifying a structural labour supply model

---

- For lone parents say, utility function defined over net income and hours:

$$U(h, y_h) = u(h, y_h) + \varepsilon_h$$

- Where  $\varepsilon_h$  is a discrete hours choice specific error
- Approximate function by:

$$U(h, y_h) \approx \alpha_{11}y_h^2 + \alpha_{22}h^2 + \alpha_{12}y_h h + \beta_1 y_h + \beta_2 h + \varepsilon_h$$

- Heterogeneity enters model through  $\alpha$  and  $\beta$ 
  - observed and unobserved heterogeneity

## Specifying a structural labour supply model

- lone parents choose hrs/wk point

$$h \in \{0, 10, 19, 26, 33, 40\}$$

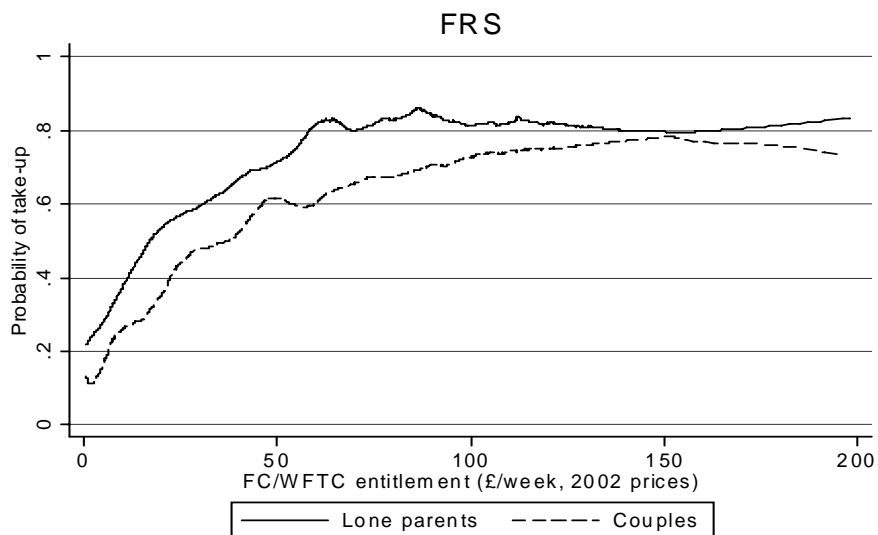
- to maximise utility. With extreme value errors:

$$\Pr[h = h_j] = \frac{\exp\{U(h_j, y_{h_j})\}}{\sum_{k \in \Theta} \exp\{U(h_k, y_{h_k})\}}$$

- Model additionally allows for:
  - Unobserved work-related (fixed) costs,  $WRC$
  - Childcare costs,  $CC$
  - Programme participation (hassle or 'stigma') costs,  $P$

## Take-up and WFTC

Variation in take-up probability with entitlement to FC/WFTC



## Estimation

---

- Data from 1995-2003 (Family Resources Survey)
  - 1995-1999: pre-reform estimation data (ex-ante)
  - 2002-2003: ‘post-reform’ validation sample
  - Use complete sample for ex-ante analysis of 2004 and more recent reform proposals

## Structural Model Elasticities

---

### (a) Youngest Child Aged 11-18

<i>Earnings</i>	<i>Density</i>	<i>Extensive</i>	<i>Intensive</i>
0	0.3966		
80	0.1240	0.5029	0.5029
140	0.1453	0.7709	0.3944
220	0.1723	0.7137	0.2344
300	0.1618	0.4920	0.0829
<i>Participation elasticity</i>		1.1295	

## Structural Model Elasticities

### (c) Youngest Child Aged 0-4

<i>Earnings</i>	<i>Density</i>	<i>Extensive</i>	<i>Intensive</i>
0	0.5942		
80	0.1694	0.2615	0.2615
140	0.0984	0.6534	0.1570
220	0.0767	0.5865	0.1078
300	0.0613	0.4984	0.0834
<i>Participation elasticity</i>		0.6352	

- Check the robustness of the structural model by the ability to simulate the impact of the WFTC reform

## Structural Evaluation Simulation Results:

### WFTC Expansion

	All	y-child	y-child	y-child	y-child
		0 to 2	3 to 4	5 to 10	11 to 18
Change in employment rate:	5.95	3.09	7.56	7.54	4.96
	0.74	0.59	0.91	0.85	0.68
Average change in hours:	1.79	0.71	2.09	2.35	1.65
	0.2	0.14	0.23	0.34	0.2

Notes: Simulated on FRS data; Standard errors in italics.

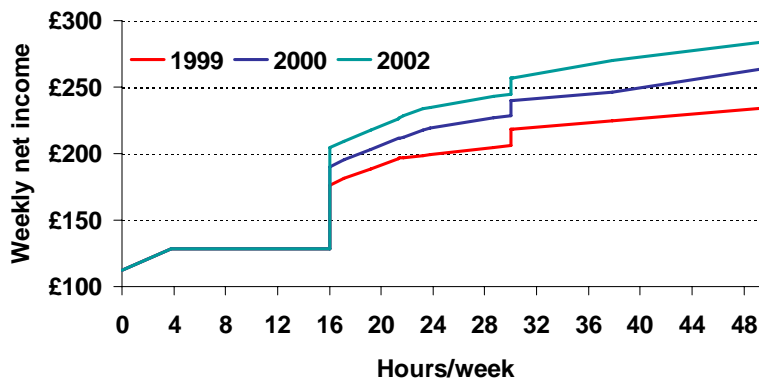
All: 5.12 without change in take-up – key impact effect

## Adult and Child Elements of the WFTC

	Adult	Child Awards by Age		
		child 0 to 10	child 11 to 15	child 16 to 18
Mar-99	£58.80	£16.40	£22.60	£28.00
Oct-99	£56.60	£21.50	£22.60	£28.00
Mar-00	£56.60	£22.60	£22.60	£28.00
Jun-01	£61.90	£27.30	£27.30	£28.00
Jun-02	£64.40	£27.30	£27.30	£28.00
Increase	19.70%	66.40%	20.50%	0.00%

Note: All monetary amounts are expressed in April 2003 prices.

## Impact of WFTC reform on lone parent, 2 children



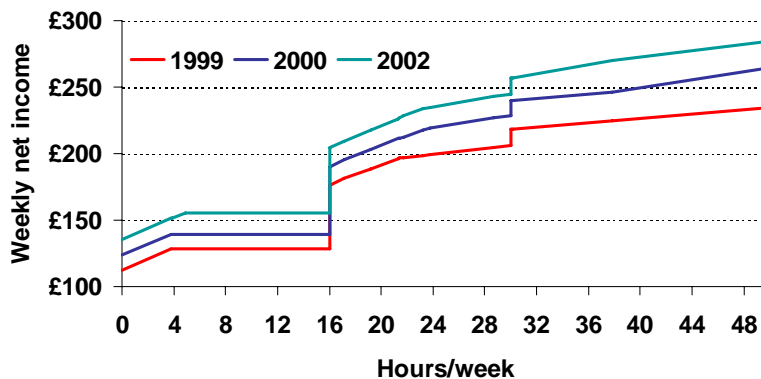
- Notes: Two children under 5. Assumes hourly wage of £4.10, no housing costs or council tax liability and no childcare costs.

## Child Rates of *Income Support*

	child 0 to 10	child 11 to 15	child 16 to 18
Mar-99	£21.90	£28.00	£33.50
Oct-99	£27.00	£28.00	£33.50
Mar-00	£28.40	£28.40	£33.80
Mar-01	£33.00	£33.00	£33.80
Oct-01	£34.50	£34.50	£35.40
Mar-02	£34.50	£34.50	£35.40
Increase	57.50%	23.30%	5.70%

Note: All monetary amounts are expressed in April 2003 prices.

## Impact of WFTC & increases in welfare benefit on lone parent, 2 children



- Notes: Two children under 5. Assumes hourly wage of £4.10, no housing costs or council tax liability and no childcare costs.

## Structural Evaluation Simulation Results:

### All Reforms

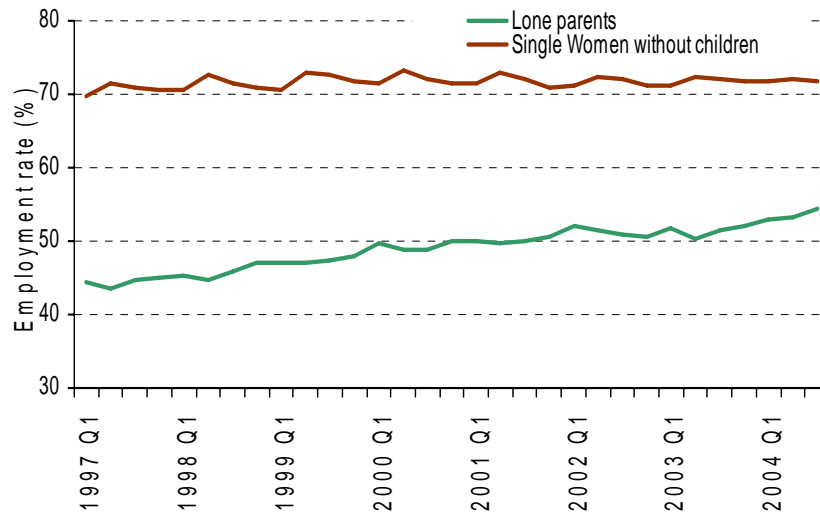
	All	y-child	y-child	y-child	y-child
		0 to 2	3 to 4	5 to 10	11 to 18
Change in employment rate:	<b>3.68</b>	0.65	4.53	4.83	4.03
	<b>0.84</b>	<i>0.6</i>	<i>0.99</i>	<i>0.94</i>	<i>0.71</i>
Average change in hours:	1.02	0.01	1.15	1.41	1.24
	<i>0.23</i>	<i>0.21</i>	<i>0.28</i>	<i>0.28</i>	<i>0.22</i>

Notes: Simulated on FRS data; Standard errors in italics.

## Robustness of the structural model:

- Compare structural model simulations based on estimated parameters to quasi-experimental ex-post evaluation
- The idea is to simulate the quasi-experimental estimate (moment)
- comparing work decisions of eligible versus those who are not eligible before and after the reform
- identify average employment impact on eligibles by *assuming* a structure on *unobservables*
  - separability
  - common trends across groups
  - invariance in group heterogeneity over time
    - *conditional* on a set of (matching) covariates X

## Employment rates of single women in the UK



## Difference-in-Differences: Lone Mothers Employment

<i>Single Women</i>	<b>Marginal Effect</b>	<b>Standard Error</b>	<b>Sample Size</b>
<b>Family Resources Survey</b>	<b>3.57</b>	<b>0.81</b>	<b>74,959</b>
<b>Labour Force Survey</b>	<b>3.81</b>	<b>0.33</b>	<b>233,208</b>

Data: Spring 1996 – Spring 2003.

Drop: Summer 1999 – Spring 2000 inclusive; individuals aged over 45.

Outcome: employment. Average impact x 100, employment percentage.

Matching Covariates: age, education, region, ethnicity,...



## Evaluation of the ex-ante model

---

- The *simulated* diff-in-diff parameter from the structural evaluation model is precise and does not differ significantly from the diff-in-diff estimate
- Compare *simulated diff-in-diff moment* with *diff-in-diff*
  - .29 (.73), chi-square p-value .57
- Consider additional moments
  - education: low education: 0.33 (.41)
  - youngest child interaction
    - Youngest child aged < 5: .59 (. 51)
    - Youngest child aged 5-10: .31 (.35)

## What of the ‘optimal’ design?

---

- Given the structural discrete choice estimates and the implied elasticities at extensive and intensive margin, we can pose the question:
  - what is the optimal tax and transfer schedule?
  - is the WFTC+ ‘optimal’ for reasonable social welfare weights?

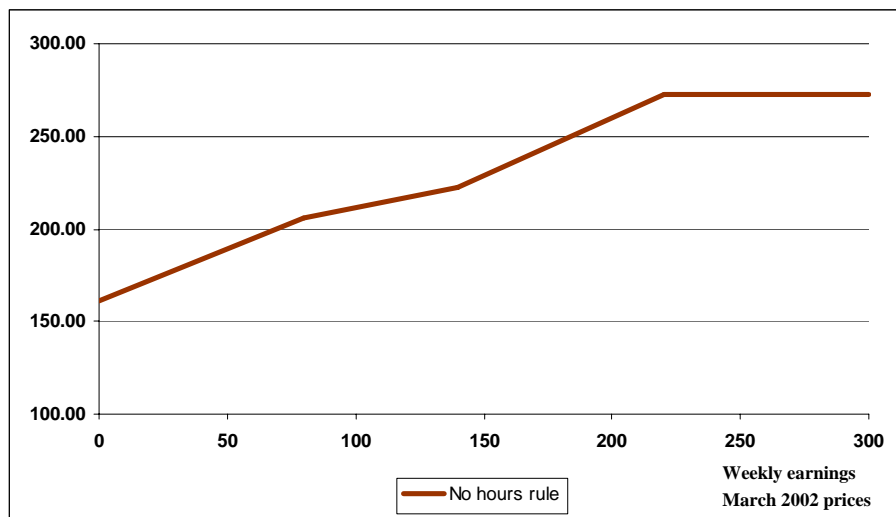
$$\Gamma(U | \theta) = \frac{1}{\theta} \{(\exp U)^\theta - 1\}$$

- When  $\theta$  is negative, the function favours the equality of utilities; We solve the schedule for a series of values – central estimates us -0.2

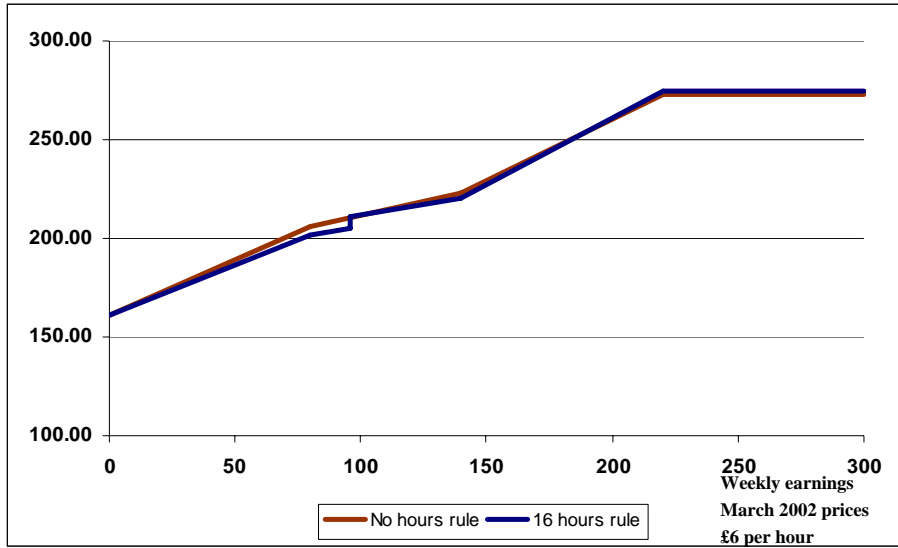
## Should there be an hours eligibility condition or ‘bonus’?

- Is it optimal to have a ‘minimum hours’ eligibility?
- If we can have a 16 hours condition, what should it look like?
- Is 16 the optimal choice?

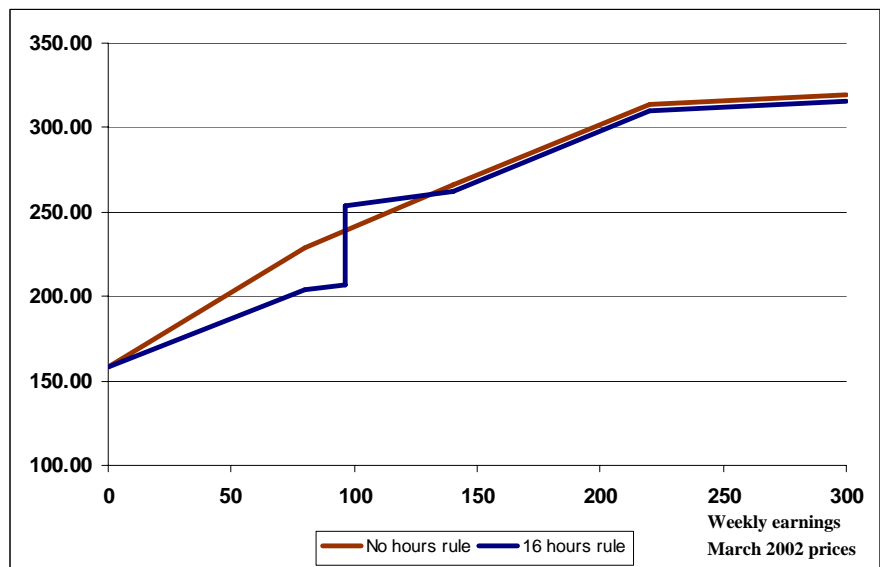
## An Optimal Schedule, Youngest Child Aged 0-4



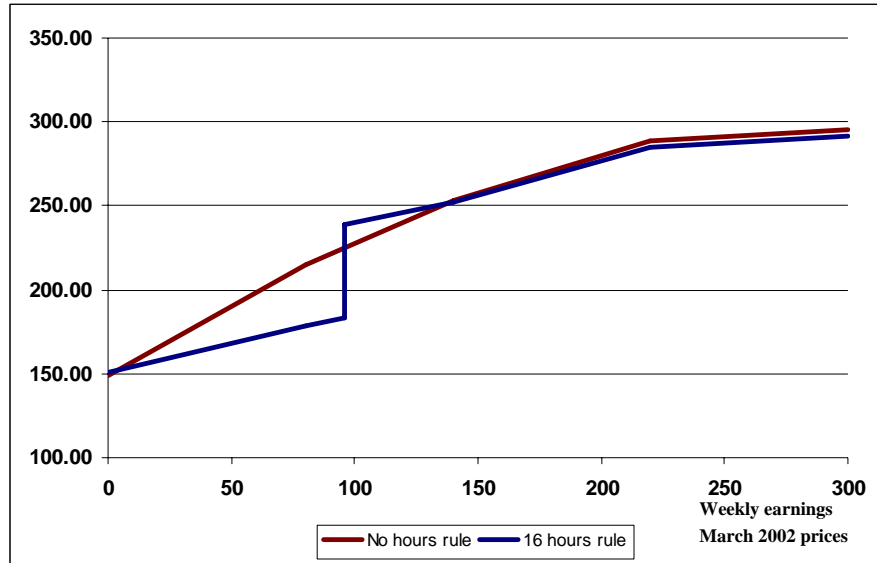
### An Optimal Schedule, Youngest Child Aged 0-4



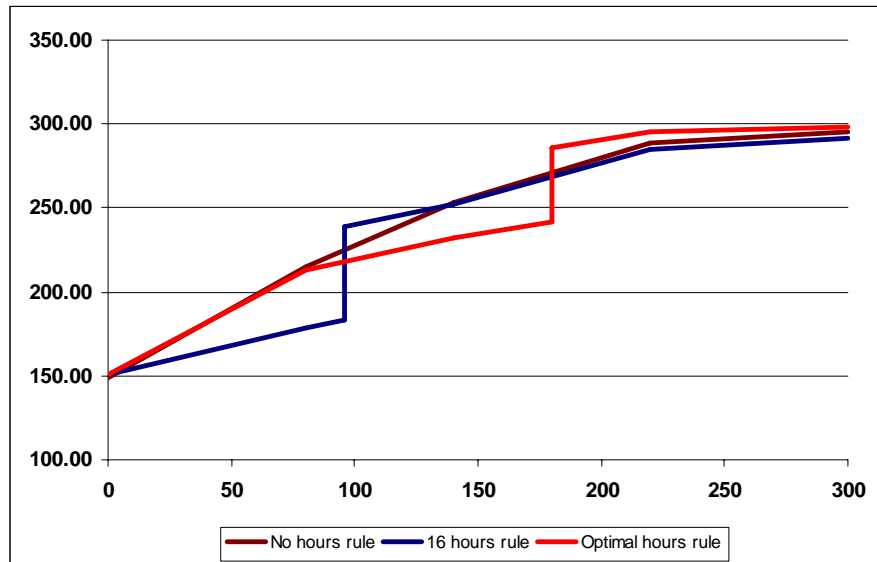
### An Optimal Schedule, Youngest Child Aged 5-10



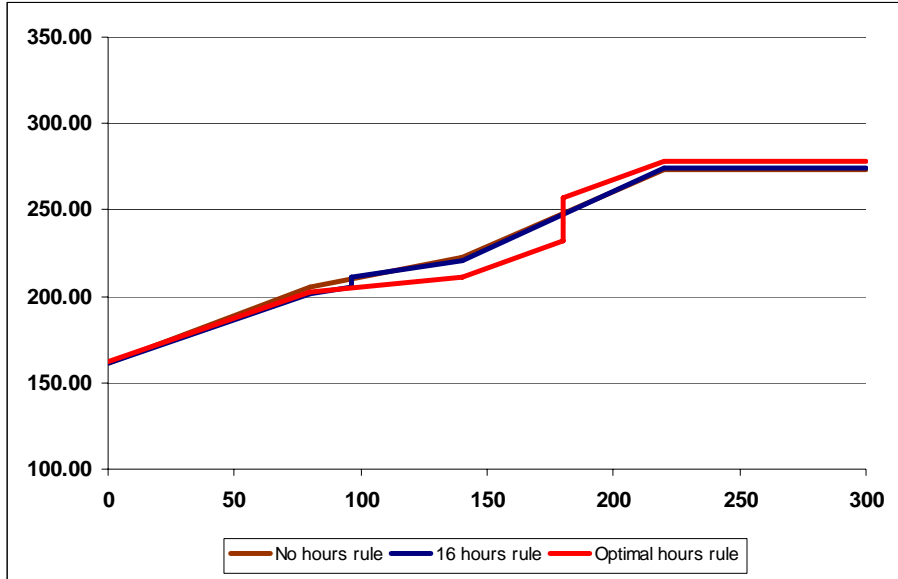
### An Optimal Schedule, Youngest Child Aged 11-18



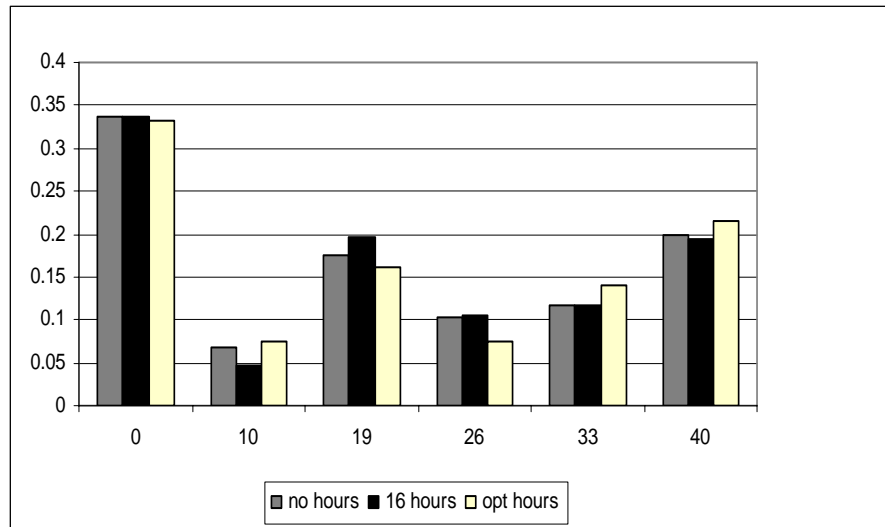
### An Optimal Schedule, Youngest Child Aged 11-18



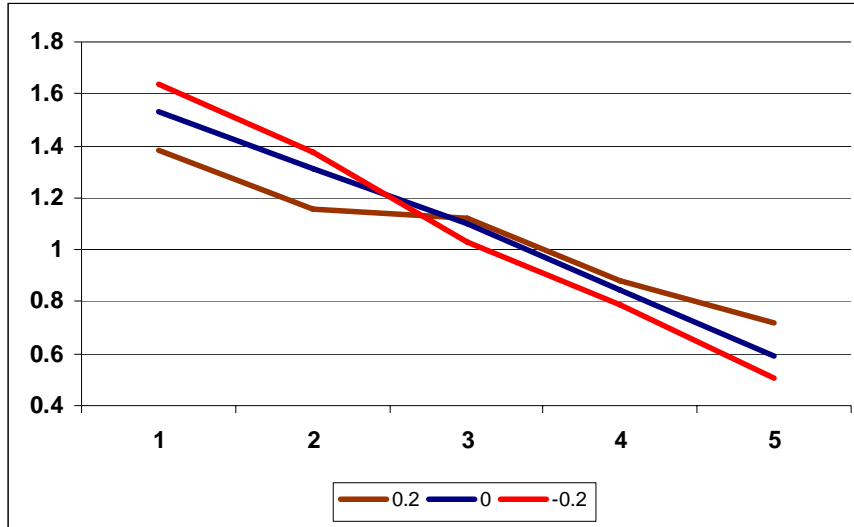
### An Optimal Schedule, Youngest Child Aged 0-4



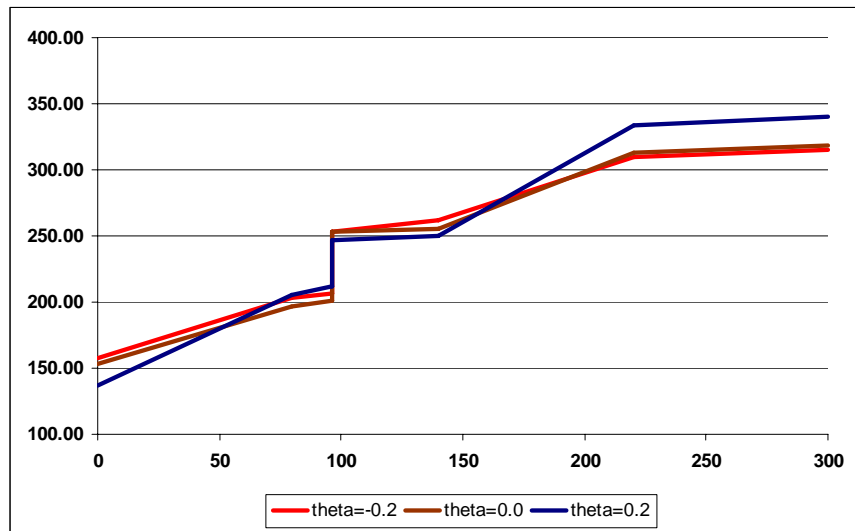
### An Optimal Schedule, Impact on Hours worked, Youngest Child Aged 5-10



## Social Welfare Weights



## The impact of welfare weights: Youngest Child Aged 5-10



## Implications?

---

- Resolved the US-EITC, UK-WFTC puzzle
- WFTC/IS type schedule looks optimal overall

But

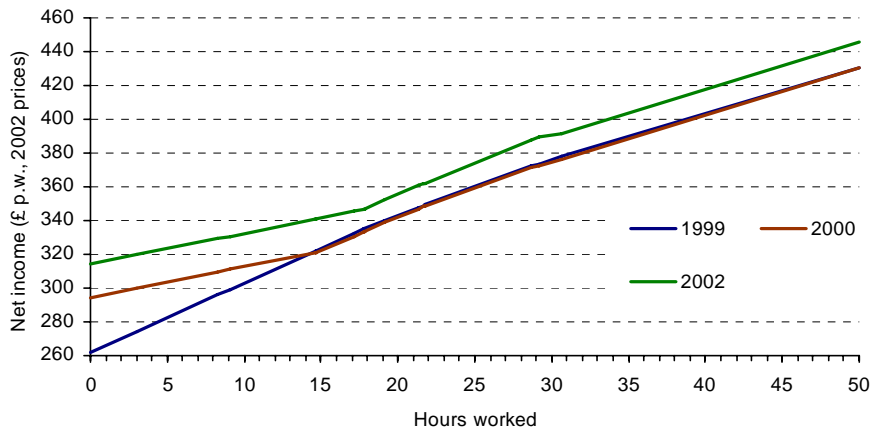
- Age of children matter
  - Only reduce current marginal tax rates on participation for parents with children of school age
- Hours rules can be optimal
  - No hours conditioning for mothers with youngest child less than 5, higher hours condition for mothers with older child.
- Administration and integration

## Extensions: ....

---

- What of work experience and wages?
- Indeed what is the long-term program impact on gross wages?
- Couples decision making?
  - UK has moved to individual income taxation but in-work tax credits are family income based
  - targeting in collective labour supply models
- What impact on fertility and family formation?

## Reform impacts on budget constraints for mother in couple



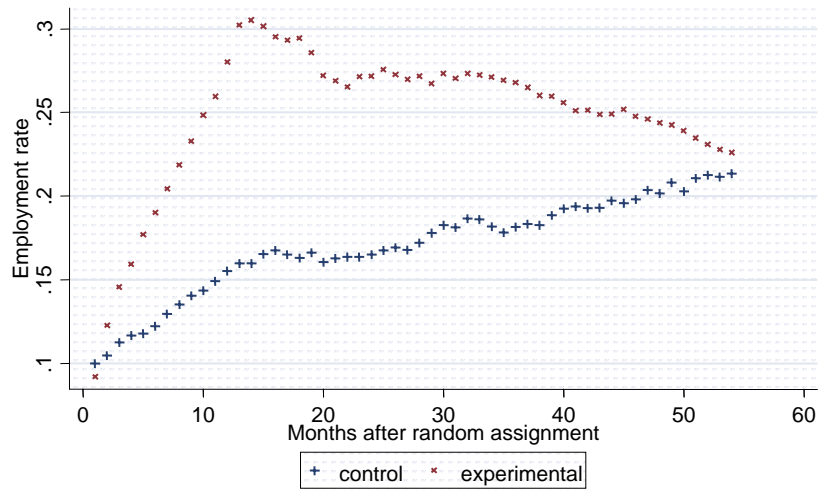
Notes: Two children under 5. Assumes hourly wage of £4.10, no housing costs or council tax liability and no childcare costs.  
The first earner in the couple is assumed to earn £300 per week in 2002 prices.

## Experience and Wages

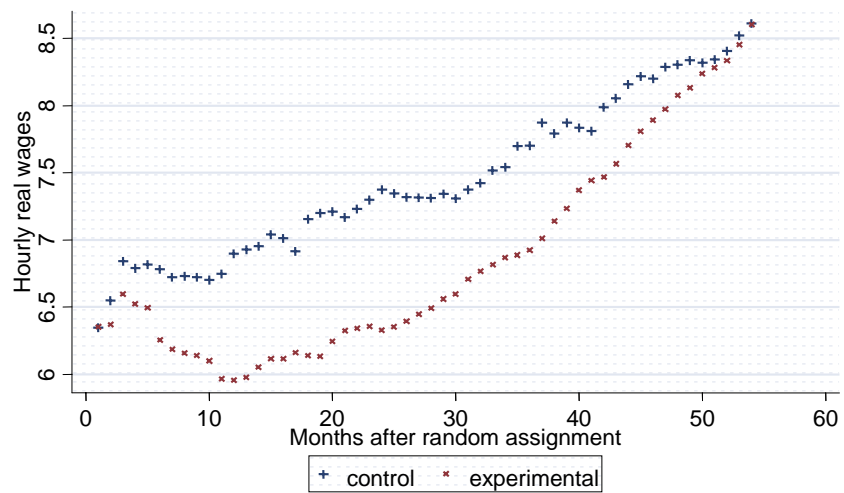
- Work experience and earnings?
  - Card and Hyslop (2004)
  - SSP Canadian single parents
- ERA results for the UK?



## SSP experiment: dynamic effects on employment rates?



## SSP experiment: dynamic effects on wages and productivity?



## Extensions: More to do....

---

- *The Integrated Family Supplement?*
  - The ‘IFS’
- Mirrlees Review...
  - [www.ifs.org.uk/mirrleesreview](http://www.ifs.org.uk/mirrleesreview)

## *Some References:*

Beaudry, P., and C. Blackorby (2000), “Taxes and Employment Subsidies in Optimal Redistribution Programs”, Discussion Paper 22, UBC, October.

Besley, T. and S. Coate (1992), “Workfare versus Welfare: Incentive Arguments for Work Requirement in Poverty Alleviation Programs”, *American Economic Review*, 82(1), 249-261.

Blundell, R. (2006), “Earned income tax policies: Impact and Optimality”, The 2005 Adam Smith Lecture to the Society of Labor Economics, *Labour Economics*, 13, 423-443.

Blundell, R.W., Duncan, A. and Meghir, C. (1998), "Estimating Labour Supply Responses using Tax Policy Reforms", *Econometrica*, 66, 827-861.

Blundell, R, Duncan, A, McCrae, J and Meghir, C. (2000), "The Labour Market Impact of the Working Families' Tax Credit", *Fiscal Studies*, 21(1).

Blundell, R. and Hoynes, H. (2004), "In-Work Benefit Reform and the Labour Market", in Richard Blundell, David Card and Richard .B. Freeman (eds) *Seeking a Premier League Economy*. Chicago: University of Chicago Press.

Blundell, R. and MaCurdy (1999), "Labour Supply: A Review of Alternative Approaches", in Ashenfelter and Card (eds), *Handbook of Labour Economics*, Elsevier North Holland.

Brewer, M. (2003), "The New Tax Credits", *IFS Briefing Note* No. 25, www.ifs.org.uk

Brewer, M. A. Duncan, A. Shephard, M-J Suárez, (2006), "Did the Working Families Tax Credit Work?", *Labour Economics*, 13(6), 699-720.

Card, David and Philip K. Robins (1998), "Do Financial Incentives Encourage Welfare Recipients To Work?", *Research in Labor Economics*, 17, pp 1-56.

Diamond, P. (1980): "Income Taxation with Fixed Hours of Work," *Journal of Public Economics*, 13, 101-110.

Eissa, Nada and Jeffrey Liebman (1996), "Labor Supply Response to the Earned Income Tax Credit", *Quarterly Journal of Economics*, CXI, 605-637.

Gregg, P. and S. Harkness (2003), "Welfare Reform and Lone Parents in the UK", CMPO Working Paper Series, 03/072.

Immervoll, H. Kleven, H. Kreiner, C, and Saez, E. (2004), 'Welfare Reform in European Countries: A Micro-Simulation Analysis' CEPR DP 4324, forthcoming *Economic Journal*.

Keane, M.P. (1995) 'A New Idea for Welfare Reform', *Quarterly Review*, Federal Reserve Bank of Minneapolis, Spring, pp 2 - 28.

Keane, M.P. and Moffitt, R. (1998), "A Structural Model of Multiple Welfare Program Participation and Labor Supply", *International Economic Review*, 39(3), 553-589.

Laroque, G. (2005), "Income Maintenance and Labour Force Participation", *Econometrica*, 73(2), 341-376.

Liebman, J. (2002), 'The Optimal Design of the Earned Income Tax Credit', in Bruce Meyer and Douglas Holtz-Eakin (eds.), *Making Work Pay: The Earned Income Tax Credit and Its Impact on American Families*, New-York: Russell Sage Foundation.

Mirrlees, J.A. (1971), "The Theory of Optimal Income Taxation", *Review of Economic Studies*, 38, 175-208.

Moffitt, R. (1983), "An Economic Model of Welfare Stigma", *American Economic Review*, 73(5), 1023-1035.

Moffitt, R. (2005), "Welfare Work Requirements with Paternalistic Government Preferences, mimeo, Johns Hopkins University, February.

Phelps, E.S. (1994), "Raising the Employment and Pay for the Working Poor", *American Economic Review*, 84 (2), 54-58.

Saez, E. (2002): "Optimal Income Transfer Programs: Intensive versus Extensive Labor Supply Responses," *Quarterly Journal of Economics*, 117, 1039-1073.

Seade, J.K. (1977), "On the Shape of Optimal Income Tax Schedules" *Journal of Public Economics*, 7, 203-236.

## Extra Slides

### Tax-Credit Policies for Low Income Families: Impact and Optimality

Table A1: Sample Descriptives for Single Women

		1996	1997	1998	1999	2000	2001	2002
No child	Work	0.753	0.762	0.769	0.770	0.774	0.767	0.775
	Age	26.789	26.906	26.799	26.957	27.104	27.317	27.450
	Non-white	0.073	0.077	0.080	0.084	0.091	0.098	0.102
	Left education before 16	0.078	0.072	0.062	0.057	0.052	0.047	0.043
	Left education at 16 or 17	0.394	0.381	0.375	0.375	0.363	0.353	0.356
	London and South-East	0.341	0.350	0.349	0.347	0.354	0.360	0.352
	Rented accommodation	0.343	0.353	0.358	0.340	0.339	0.350	0.346
	Observations	26243	24463	24410	23987	22558	23517	22846
Child	Work	0.417	0.425	0.444	0.464	0.477	0.487	0.496
	Age	32.330	32.580	32.655	32.863	33.181	33.280	33.288
	Non-white	0.100	0.099	0.091	0.098	0.106	0.112	0.111
	Left education before 16	0.209	0.196	0.189	0.169	0.154	0.161	0.155
	Left education at 16 or 17	0.632	0.627	0.633	0.635	0.646	0.641	0.637
	London and South-East	0.285	0.285	0.285	0.293	0.294	0.303	0.301
	Rented accommodation	0.686	0.704	0.708	0.696	0.697	0.694	0.676
	Number of kids	1.783	1.785	1.791	1.784	1.778	1.776	1.794
	Age of youngest child	6.187	6.249	6.272	6.414	6.592	6.612	6.676
Observations	14613	14172	14550	14343	13572	14097	13996	

## Net Income schedule :

$$y_{hP} = wh + I - \overset{\text{Tax}}{t(wh, I)} - C_h + \Psi_0(w, h, I) + \overset{P: \text{take-up}}{P\Psi_1(w, h, I)}$$

Transfers

$$\text{or } y_{hP} = \tilde{y}_{hP} + P\Psi_1(w, h, I)$$

the tax-credit payment function  $\Psi_1(w, h, I)$  depends on:

hours (through the hours condition of entitlement)

other income  $I$

demographic characteristics  $X$

## Take-up

Utility 'cost' of receiving in-work support

$$\eta = X_\eta \beta_\eta + u_\eta$$

claim  $\Psi_1$  in FC/WFTC at hours  $h_j$  if:

$$U_P(h_j, \tilde{y}_{h_j} + \Psi_1 - C, P = 1) > U(h_j, \tilde{y}_{h_j} - C).$$

where  $C$  is the fixed cost of work. The utility cost among those who are eligible for WFTC at hours  $h_j$  and choose to claim WFTC must not exceed the utility gain from receipt of WFTC transfer income relative to non-receipt:

$$\eta < U(h_j, \tilde{y}_{h_j} + \Psi_1 - C) - U(h_j, \tilde{y}_{h_j} - C)$$

$$u_\eta < \Omega_U \quad \text{where} \quad \Omega_U = U(h_j, \tilde{y}_{h_j} + \Psi_1 - C) - U(h_j, \tilde{y}_{h_j} - C) - X_\eta \beta_\eta$$

## Preferences and Take-Up

---

Preferences:

$$\begin{aligned}U_P(h, y_{hP}, P, C) &= \alpha_{11}(\tilde{y}_h + P \cdot \Psi_1 - C)^2 + \alpha_{22}h^2 + \alpha_{12}(\tilde{y}_h + P \cdot \Psi_1 - C) \cdot h \\ &+ \beta_1(\tilde{y}_h + P \cdot \Psi_1 - C) + \beta_2h + \varepsilon_{hP} - (P \cdot E_h) \cdot \eta \\ &= U(h, \tilde{y}_h + P \cdot \Psi_1 - C) - (P \cdot E_h) \cdot \eta,\end{aligned}$$

where  $E_h = 1(\Psi_1 > 0)$  is an indicator of eligibility at hours  $h$ ,

$C$  represents the ‘fixed cost’ of work

and  $\eta = X_\eta\beta_\eta + u_\eta$  is ‘cost’ of receiving in-work support.

The introduction of these additional terms is important in evaluation of a reform which increases generosity

## Stochastic specification

---

Stochastic Preferences

$$\beta_1 = X_1\beta_{1x} + u_y$$

$$\beta_2 = X_2\beta_{2x} + u_h$$

$$\alpha_{11} = X_{11}\alpha_{11x}$$

$$\alpha_{22} = X_{22}\alpha_{22x}$$

$$\alpha_{12} = X_{12}\alpha_{12x}$$

Fixed costs of work

$$WRC_1 = X_{f1}\beta_{f1} + u_f$$

$$WRC_2 = X_{f2}\beta_{f2}$$

## Childcare Costs

---

$$h_{cc} = G(h|X_{cc})$$

At price  $p_c$  for an hour of childcare per child

$$\begin{aligned} C(h, X_f, X_{cc}, p_c, u_f) &= WRC_1 \cdot I_{h1} + WRC_2 \cdot I_{h2} + p_c \cdot h_{cc} \\ &= (X_{f1}\beta_{f1} + u_f) \cdot I_{h1} + (X_{f2}\beta_{f2}) \cdot I_{h2} + p_c \cdot G(h|X_{cc}) \end{aligned}$$

To estimate the childcare price per child  $p_c$ , we compute the empirical distribution of hourly child-care costs for various groups of working mothers defined by their family status and number and age of children  $X_{cc}$ .

## Choice probabilities:

---

$$\Pr(h = h_j, P = p | \mathbf{X}, \mathbf{u}) =$$

$$\frac{\exp\{U(h_j, \tilde{y}_{h_j} + p \cdot \Psi_{h_j}, P=p)\}}{\sum_{k=1}^J \max[\exp\{U(h_k, \tilde{y}_{h_k}, P=0)\}, E_{h_k} \cdot \exp\{U(h_k, \tilde{y}_{h_k} + \Psi_{h_k}, P=1)\}]}$$

$$\text{where } \mathbf{u} = (u_w, u_y, u_h, u_{cc}, u_f)$$

## Likelihood specification

These preferences, fixed costs, childcare costs and stigma cost expressions provide the choice probabilities:

$$\Pr(h = h_j, P = p | X, u)$$

From which we construct the sample log likelihood:

$$\begin{aligned} \log L = \sum_i \log & \int_{u_{-u_\eta}} \left[ \int_{u_\eta < \Omega_U} \prod_j \Pr(h = h_j, P = 1 | X, u)^{1(h=h_j, E_{h_j}=1, P=1)} f(u_\eta) du_\eta \right. \\ & + \int_{u_\eta > \Omega_U} \prod_j \Pr(h = h_j, P = 0 | X, u)^{1(h=h_j, E_{h_j}=1, P=0)} f(u_\eta) du_\eta \\ & \left. + \int_{u_\eta} \prod_j \Pr(h = h_j, P = 0 | X, u)^{1(h=h_j, E_{h_j}=0)} f(u_\eta) du_\eta \right] f(u_{-u_\eta}) du_{-u_\eta} \end{aligned}$$

$$\text{where } u_{-u_\eta} = (u_w, u_y, u_h, u_f, u_{cc})$$

## Likelihood specification

$$\begin{aligned} \log L = \sum_i \log & \int_{u_{-u_\eta}} \left[ \int_{u_\eta < \Omega_U} \prod_j \Pr(h = h_j, P = 1 | X, u)^{1(h=h_j, E_{h_j}=1, P=1)} f(u_\eta) du_\eta \right. \\ & + \int_{u_\eta > \Omega_U} \prod_j \Pr(h = h_j, P = 0 | X, u)^{1(h=h_j, E_{h_j}=1, P=0)} f(u_\eta) du_\eta \\ & \left. + \int_{u_\eta} \prod_j \Pr(h = h_j, P = 0 | X, u)^{1(h=h_j, E_{h_j}=0)} f(u_\eta) du_\eta \right] f(u_{-u_\eta}) du_{-u_\eta} \end{aligned}$$

where

$$\mathbf{u}_{-u_\eta} = (u_w, u_y, u_h, u_f, u_{cc})$$



## Structural Evaluation Model: Parameter Estimates

Parameter	Estimate	Standard Error	z	$P >  z $
$\alpha_{11}$ : Constant	-0.321	0.044	-7.290	0.000
Youngest Child 0-2	0.210	0.074	2.844	0.004
Youngest Child 3-4	0.212	0.065	3.244	0.001
Youngest Child 5-10	-0.059	0.061	-0.969	0.332
$\alpha_{22}$ : Constant	0.308	0.027	11.317	0.000
Youngest Child 0-2	0.024	0.062	0.385	0.700
Youngest Child 3-4	-0.152	-0.031	-2.401	0.016
Youngest Child 5-10	-0.031	0.037	-0.833	0.405
$\alpha_{12}$ : Constant	0.010	0.004	2.693	0.007
Youngest Child 0-2	-0.019	0.005	-3.541	0.000
Youngest Child 3-4	-0.015	0.006	-2.427	0.015
Youngest Child 5-10	0.005	0.005	1.099	0.272

$\beta_1$ : Constant	0.327	0.023	14.538	0.000
Age	-0.027	0.047	-0.579	0.563
Age Squared	0.003	0.006	0.546	0.585
Education 16	-0.015	0.009	-1.677	0.093
Youngest Child 0-2	-0.085	0.037	-2.270	0.023
Youngest Child 3-4	-0.046	0.035	-1.320	0.187
Youngest Child 5-10	0.012	0.030	0.399	0.690
Number of Children	0.012	0.007	1.889	0.059
Non-white	-0.068	0.017	-3.966	0.000
Random Term (SD)	0.004	0.009	0.400	0.689
$\beta_2$ : Constant	-0.213	0.015	-13.993	0.000
Age	0.106	0.012	8.708	0.000
Age Squared	-0.012	0.002	-7.334	0.000
Education 16	0.034	0.003	13.188	0.000
Youngest Child 0-2	0.017	0.027	0.614	0.539
Youngest Child 3-4	0.062	0.028	2.197	0.028
Youngest Child 5-10	-0.011	0.020	-0.553	0.581
Number of Children	-0.012	0.003	-3.565	0.000
Non-white	0.016	0.009	1.878	0.060
Random Term (SD)	0.000	0.002	0.000	1.000

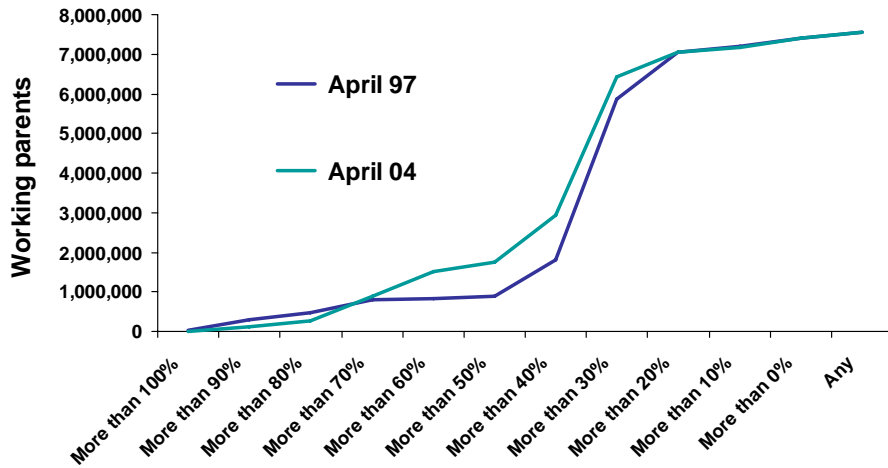
continues...

$\eta$ :	Constant	-0.252	0.061	-4.120	0.000
	October 1999	0.024	0.113	0.213	0.832
	April 2000	-0.210	0.116	-1.809	0.071
	Age	-0.349	0.386	-0.905	0.365
	Age Squared	0.119	0.054	2.214	0.027
	Education 16	0.767	0.085	9.060	0.000
	Non-white	0.399	0.148	2.699	0.007
	Random Term (SD)	0.215	0.103	2.085	0.037
	<i>FC</i> <sub>1</sub> : Constant	8.955	6.978	1.283	0.199
	Youngest Child 0-2	42.298	14.532	2.911	0.004
	Youngest Child 3-4	32.760	12.810	2.557	0.011
	Youngest Child 5-10	5.542	8.984	0.617	0.537
	Number of Children	3.015	2.836	1.063	0.288
	Non-white	38.256	13.018	2.939	0.003
	London	48.089	4.593	10.469	0.000
	Random Term (SD)	5.304	3.140	1.689	0.091
	<i>FC</i> <sub>2</sub> : Constant	13.963	5.576	2.504	0.012
	Youngest Child 0-2	21.091	14.245	1.481	0.139
	Youngest Child 3-4	-4.638	11.045	-0.420	0.675
	Youngest Child 5-10	13.364	7.747	1.725	0.085
	Number of Children	4.558	3.476	1.311	0.190
	Non-white	-33.931	12.492	-2.716	0.007
	London	-13.858	5.952	-2.328	0.020
Maximised Log Likelihood				-15564.720	
Observations				11594	

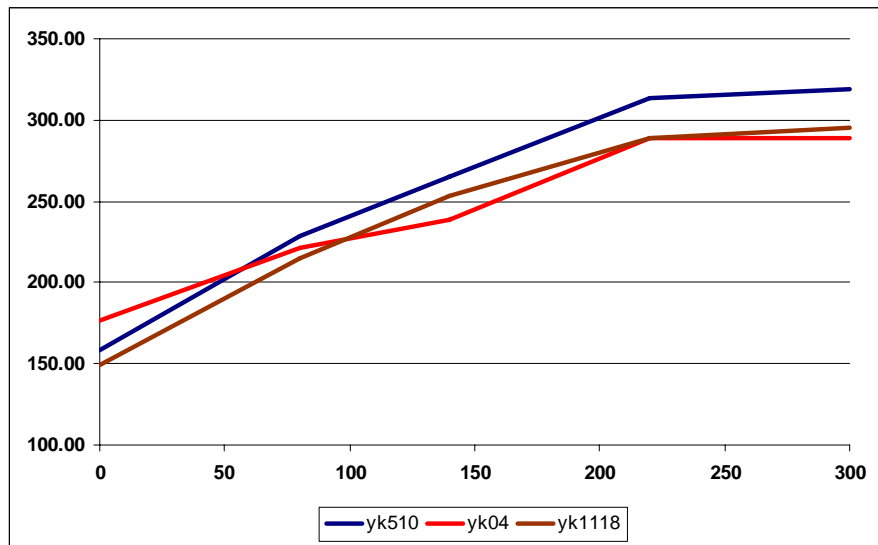
*Note:* Standard errors are calculated analytically from the Simulated Maximum

	Apr-99	Oct-99	Jun-00	Jun-02
	(FC)	(WFTC)	(WFTC)	(WFTC)
<b>Basic Credit</b>	<b>49.8</b>	<b>52.3</b>	<b>53.15</b>	<b>62.5</b>
<b>Child Credit</b>				
<i>under 11</i>	<b>15.15</b>	<b>19.85</b>	<b>25.6</b>	<b>26.45</b>
<i>11 to 16</i>	<b>20.9</b>	<b>20.9</b>	<b>25.6</b>	<b>26.45</b>
<i>over 16</i>	<b>25.95</b>	<b>25.95</b>	<b>26.35</b>	<b>27.2</b>
<b>30 hour</b>	<b>11.05</b>	<b>11.05</b>	<b>11.25</b>	<b>11.65</b>
<b>Threshold</b>	<b>80.65</b>	<b>90</b>	<b>91.45</b>	<b>94.5</b>
<b>Taper</b>	<b>70% of earnings after income tax and NI</b>	<b>55% of earnings after income tax and NI</b>	<b>55% of earnings after income tax and NI</b>	<b>55% of earnings after income tax and NI</b>
<b>Childcare</b>	<b>Childcare expenses up to £60 (£100) for 1 (more than 1) child under 12 disregarded when calc income</b>	<b>Award increased by 70% of childcare expenses up to £100 (£150) for 1 (more than 1) child under 15</b>	<b>Award increased by 70% of childcare expenses up to £100 (£150) for 1 (more than 1) child under 15</b>	<b>Award increased by 70% of childcare expenses up to £135 (£200) for 1 (more than 1) child under 15</b>

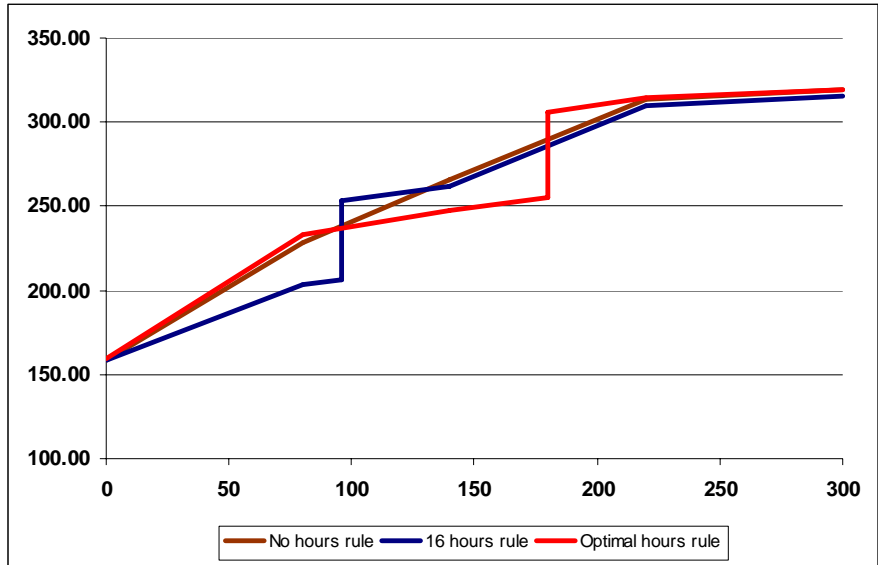
Changes in marginal tax rates: all working parents  
 Marginal rates at the bottom remain high



An Optimal Schedule, no hours condition



### An Optimal Schedule, Youngest Child Aged 5-10



### The Structure of the Constraint, top-rate 50%

