

THE USE OF GIS IN BROWNFIELD REDEVELOPMENT

Rebekah Boott*, Kate Heppell**, Mordechai Haklay*, Jeremy Morley***

* Centre for Advanced Spatial Analysis, University College London, 1-19 Torrington Place, Gower Street, London, WC1E 6BT.

Tel +44 (0) 20 7504 4260; Fax +44 (0) 20 75044293; Email: hannah.boott@ucl.ac.uk

ABSTRACT

In recent years, the issue of Brownfield site development - the re-use of previously used urban land - gained a significant place in the planning agenda. However, not all Brownfield sites are derelict or contaminated land, and some of them are significant as environmental amenities - be it part of wider ecosystem or a green area for the local population. The growing concern to include environmental aspects into the public debate have lead the Environment Agency, the Jackson Environment Institute and the Centre for Advance Spatial Analysis to commission a short term pilot study to evaluate the contribution of a GIS for decision support and for "discussion support".

In this paper, we describe how the state-of-the-art in geographic information (GI) and GI Science (GISc) can be used in a short term and limited project to achieve a practical and usable system. We are drawing on developments in information availability, as made accessible through the World Wide Web and research themes in GISc ranging from Multimedia GIS to Public Participation GIS.

INTRODUCTION

To meet the growing demands for housing it is forecast that an increase in 4.4 million homes will be required in the UK by 2016. It has been proposed that brownfield# redevelopment would provide the space needed for the extra housing.

Brownfield sites are an important component of the government's strategy to develop sustainable urban communities. Sustainable development incorporates economic, social and environmental needs. It is concerned with reconciling economic demands and social needs with the capacity of the environment to cope with pollution and to support human and other life (Environment Agency, 1998). However, there is a lack of integrated and comprehensive knowledge on the condition, location and management of brownfield sites throughout the UK and little attention has been given to the contribution that brownfield sites make to biodiversity, nature conservation and amenity. The project described in this paper, funded by both the Environment Agency and University College London, aimed to evaluate the contribution of GIS to help remedy these issues.

It is in this context, that the National Land-Use Database (NLUD) should be mentioned. The NLUD Partnership consists of four organisations; Department of Environment, Transport and Regions, English Partnerships, Local Government Management Board and the Ordnance Survey. It is designed as a comprehensive national land-use database for England and under current development pressures and prioritises the registration

** Department of Geography, Queen Mary and Westfield College, University of London, London E1 4NS. Tel: 0171 975 5429, Fax: 0181 981 6276

*** Department of Geomatic Engineering, University College London, Gower Street, London, WC1E 6BT. Tel: 0171 504 2083 Fax : 0171 380 0453

For the purpose of this research the term 'brownfield site' was defined as an area which had previously been developed, but had since fallen derelict and may, or may not have existing buildings on it. No assumptions were made regarding contamination or pollution of each site.

of brownfield related information. However, though geographic, this system does not hold any information in a GIS format. Furthermore, it is very difficult to integrate the NLUD point data with georeferenced data sets such as Ordnance survey (OS) Landline data. Without ignoring the value and importance of NLUD, we decided to focus on GIS oriented data collection and assembly.

For the purpose of this project it was decided to focus on urban brownfield sites in the Wandle Valley, South London that have the most redevelopment potential and the greatest economic, environmental and social benefits. It was envisaged that such system would provide a tool for: facilitating investment in urban areas; reducing risks from pollution of land, air and water; benefiting low income and minority populations by revitalising their neighbourhoods; encouraging participation of public groups in the planning process and balancing the demands of development with the need to protect and enhance the environment.

As this list clearly demonstrates we identified a wide range of stakeholders that are relevant to brownfield site redevelopment. These included property developers, planning professionals, local authorities, environmental bodies and organisation, and last but not least - the local population. From the outset, it was clear that we would have to confront the opposing and what might seem as incommensurable views of different stakeholders. Nevertheless, it was felt that common information needs could be identified and accommodated. Furthermore, as the Environment Agency was a major stakeholder, our main focus was on the environmental aspects of brownfield development.

It was decided that the system would be developed rapidly, using PC based GIS mounted on a notebook computer. This was due to the strong presentation element in the project. As the project was developed under severe time and resource limitations, it was decided to rely on existing digital data sets as much as possible and to combine recent lessons from multiple areas of Geographical Information Science (GISc) research. This paper follows the development of the Brownfield GIS, pointing to the areas that informed it and the way in which current development in information access and Geographical Information (GI) were used to develop the system.

The paper starts with the identification of user requirement. We have used multiple approaches to accommodate the requirements and needs of multiple stakeholders. Based on those requirements, we have built the system - by that we mean mainly the data collection and database organisation. As will be explained latter, it was felt that the system should be left "open ended" as possible, and therefore the interface of the hosting GIS software (ArcView) was left unchanged as possible. In the following section we discuss several analyses that have been carried out with the system, and the few customisations to the systems' interface that were deemed necessary. Following this description, we describe the exposition of the system to the different stakeholders, starting with a local activists who participate in a workshop where they learned about GIS capabilities and uses and then continuing with the more institutional users, such as environment agency officials, local authorities GIS and planning officers and the Government Office for London. We then turn to discuss the main lesson learned from this project that are relevant to the broader GISc community. This includes the rapid development of GIS and its database, the contribution of GIS to the brownfield debate and the use of GIS as "discussion support" tool. We conclude with some recommendation for future research.

By its nature, the project is based on multiple research streams in GISc. We therefore felt that it is more appropriate to describe each of the area in the appropriate section of this paper, and to combine them in the conclusion of this paper.

USER REQUIREMENTS

The integration of user requirement study is now commonplace in general information systems design (Preece, 1995) and in GIS design (Reeve and Petch, 1999). They stem from studies in Usability Engineering and approaches like User Centred Design (Landauer, 1995) developed during the late 1980s. This aspect of GIS design received attention in the mid 1990s (Medyckyj-Scott and Hearnshaw, 1993; Nyerges et al., 1995). However, in their more familiar form, user requirements are connected to “task analysis” - a process of identifying the tasks that the user perform with the system (see for example Rasmussen, 1995). This approach requires quite a high-level of knowledge about users’ work practices, activities and the ways in which the proposed information system can support these processes.

In the context of the brownfield GIS, and especially in light of the emphasis on environmental information, such clear tasks and processes are hard to define and any focus on specific process (such as site selection for property developers) will limit the usefulness of the system to other stakeholders. Therefore, we have selected a more integrative and deliberative approach which combines methods like interviews with key stakeholders, a seminar series with academics and practitioners and the use of an inclusionary workshop. These methods stem from the latest ideas about the meaning of participatory planning (Healey, 1997; Healey, 1998). Furthermore, current functionality of desktop GIS contains the needed elements to accomplish a wide range of tasks. As such, they represent a “toolbox” that can be adapted to the specific task (Batty, 1993). Therefore, it was necessary to use the desktop GIS with its set of extensions as a test bed for ideas, and to envisage the development of more closed and specific system later on, when the main requirements and need will be clarified.

The user requirement study started with the identification of potential users. Those included the Department of Environment, Transport and Regions (DETR), Government Office for London (GOL), the up-coming Greater London Authority (GLA), London Planning and Advisory Committee (LPAC), English Partnerships, Non-government Organisations (NGO’s) and the London Boroughs. Beyond the professional user group, the system should reach out to a wider audience - the general public. However, the core elements of the system were set and defined by the professional group.

Initially, the goals were defined through interviews with local and central government officials, representatives of the Environment Agency and others. These one-to-one interviews were augmented by views and ideas about brownfield development that came from a seminar series in UCL, held during 1999. These deliberative discussions focused around four themes (Bloomfield, forthcoming): First, the issues of *Definition, criteria and survey* were raised. During this seminar, the question of “What is a brownfield site?” was examined. It became clear that though some general concepts exist, there is no exact definition that will suit all parties. The following seminar focused on *Data, users and site assembly processes*. This seminar examined the information required by the various stakeholders. It clarified the difficulties that face developers, planners and others when they try to deal with brownfield sites. Such an operation includes the evaluation of the stock of sites or prioritises their development. The third seminar, titled *Public involvement, skills and knowledge* considered the role of public participation and how should local and national interest groups should get involved in Brownfield site development. *Future government structure* - In the final seminar, the focus turned to issues of governance and how bodies such as the GLA should act toward brownfield development. These seminars participants came from a wide variety of backgrounds – including policy makers, officials, representative of the commercial sector and academics.

Though these seminars were not dedicated to the development of the brownfield GIS, we have used the opportunity to bring issues of information access and availability to the discussion table, as to improve our understanding of what was needed. It is important to note that during all seminars, the issue of information needs and GIS integration were raised

repeatedly by participants and there was no need to “divert” the discussion to raise these issues. Many participants felt that the integration of GIS with public access medium (the Internet) would be very useful. Data availability was an important issue and it was suggested that improved availability/accessibility to information on the system might benefit the public. Participants also voiced concern about the creation of a system designed with the objective of only aiding developers in their search for sites to suit their own purpose. Many participants also wanted to see contextual as well as site-specific information. By including environmental or policy-based text on the system users would be able to view brownfield development as one component in the regeneration programme of a whole area. Regular updating of the system was also raised.

The seminar series and the interviews formed the first phase of the user requirement study. After this phase, the data sources for the system were gathered, and the initial database created. This was followed by an evaluation of public requirement and need from such a system, as a workshop titled "Tools for planners, tools for the people?" revealed. This workshop is discussed later in the paper. First, to build a full picture of the database as it was used in the workshop, the process of data integration and analysis will be explained.

DATA COLLECTION

Traditionally, data collection and collation is considered as one of the complex and expensive task that relates to the creation of a GIS (Huxhold and Levinsohn, 1995). However, this situation is rapidly changing - at least for a certain type of applications and activities¹. The availability of digital data set and the ability of commercial-off-the-shelf (COTS) software to integrate them easily was predicted by Batty in the early 1990's (1993) and it can be argued that we are clearly well into the process of producing easier and faster collation of GI data-sets.

However, some caveats do exist and will continue to do so. Though the problem of precision that stem from constraints in hardware or software - a problem that blighted earlier systems (Tomlinson, 1970) - has virtually disappeared, other issues like accuracy in GI (Burrough, 1986), conflation (Laurini and Thompson, 1992) or error propagation (Heuvelink, 1998) have not. While being aware of those issues and the possibility that specific questions cannot be answered without a complete, current and accurate brownfield database, for pragmatic reasons (such as the lack of information and the relative urgency in the requests from the user community), it was decided to trade-off high accuracy with information availability. Therefore, we have focused on the collation of data sets that can complement one another (especially in the environmental side). Another approach was to use known high-quality and up-to-date data sets, such as the Ordnance Survey (OS) data. Finally, we have tried to combine data sets that demonstrate the capabilities of GIS and spatial analysis in manipulation of socio-economic data (Martin, 1991) and environmental modelling (Goodchild et al., 1993). These data sets came from many diverse sources in both digital and analogue formats. Table 1 summarises the data set that we used to compile the system database.

The datasets categorised as **green/natural environment** data in Table 1 were chosen to show how environmentally and culturally sensitive areas could influence the brownfield redevelopment process. The data acquired from the London Ecology Unit (LEU) provides an important information for developers - as the development of some of the brownfield sites might be inhibited by environmental concerns. Noteworthy is that this information was digitised especially for this project, and was not available in digital form previously. Flood

¹ And for certain organisational settings. It is important to remember that the brownfield GIS was developed inside a university and research group that already collated massive amount of GI, a fact that reduces the costs of GI quite dramatically.

plains information was based on the Environmental Agency modelling and was integrated in order to demonstrate how the output of GIS based environmental modelling can be integrated and used in the project context. By simple overlaying, it was possible to identify brownfield sites with a potential risk of flooding - an issue of importance for developer and planner alike.

The **infrastructure** datasets in Table 1 were chosen as they provided a good backdrop over which to view other datasets. OS Meridian data was chosen so that the road network could be used for service area analysis as we describe later. Aerial photography data taken from Cities Revealed™ was integrated into the system to cover some of the main brownfield sites. This was used to provide a rich, contextual information for the brownfield site and its surroundings. The system was programmed in such way that once the theme is viewed at a greater scale than 1:10,000 the aerial photography data replaces the more skeletal road network while the other information relating to the brownfield sites remains visible. By doing so, it is possible to put the sites in better context and to help users to orientate themselves (Figure 3).

The population **socio-economic** data was included to show which areas could already have high-density population despite being brownfield sites suitable for redevelopment. They provide an opportunity to juxtaposition relatively abstract information (population density per enumeration district) with physical or modelled information. However, we have limited our use of the census data set, as it was felt that it becoming dated and too inaccurate. The shopping area data was included so network analysis could be carried out to establish which brownfield sites were within the each shopping centre service area.

The **brownfield** data shown in Table 1 that was derived from Unitary Development Plan (UDP) maps was used because it was the most recently available. Originally we planned to use data collected for the National Landuse Database (NLUD) until its lack of availability and its difficulty for integration with GIS was discovered. Instead older data was digitised from the UDP maps and a sample of NLUD point data for Sutton was used in comparison. The Wandle Valley Regeneration Partnership (WVRP) brownfield site data was used as a direct result of the iterative development process. The nine sites were deemed of high importance to the partnership.

Together, the data sets represent a cross section of the issues that influence brownfield site development, with an emphasis on the integration of environmental data sets with socio-economic and infrastructure data sets.

Textual Data collection and Multimedia

The integration of multimedia with GIS started during the mid 1990s (Craglia and Raper, 1995). Soon after, GIS vendors started to integrate multimedia capabilities into their products. However, such integration was somewhat awkward and the multimedia functionality usually limited. The introduction of the World Wide Web as a medium that is inherently multimedia based followed soon after and changed the way in which multimedia was distributed and organised. It is important to note that the environmental application of multimedia GIS have used the precursor of the Web environment - the acclaimed HyperCard (Fonseca et al., 1995; Shiffer, 1995). However, the web browser which is now part of any operating system makes the task of integrating multimedia into applications far easier. In some cases, the whole GIS application is integrated into the web browser, for example, Kingston *et al.* (2000) discussed such application that is more akin of traditional GIS, while others (Brown, 1999; Doyle et al., 1998) discussed the potential of integrating other multimedia forms with Web-based GIS. In the case of the brownfield GIS, we used the capabilities of the web browser and the WWW to integrate multimedia and information held in remote servers to augment the capabilities of the basic software package, without “struggling” with the limited multimedia capabilities of the specific software.

We have created web pages to provide information on Brownfield sites, ex-brownfield sites, rivers and areas of nature conservation. These pages include textual information and pictures taken with a digital camera for various sites. Links were established from many polygons in the GIS to the Web browser so that further information such as Environment Agency pages, planning register, local groups pages etc on the Internet could be easily and quickly accessed. We have linked to the Environment Agency pages which deal with regulations and the agency responsibility areas. Wandsworth council web site provides public access to the planning register and therefore it was possible to access the applications that relate to specific brownfield. Some brownfield sites also had web pages set up by local independent groups and we have linked to these sites. One such site is the Battersea power station site, in which links were established to the various stakeholders - developers, local pressure group and the planning register.

GIS ANALYSIS AND CUSTOMISATION

One of the most powerful features of any GIS is the capacity to carry out various spatial analyses quickly and easily. In the case of the project we chose to demonstrate these capabilities by implementing some overlay analysis - probably the most used analysis function of GIS since McHarg popularised it in the late 1960s (McHarg and American Museum of Natural History, 1969), network analysis and visualisation of service areas (Armstrong et al., 1992).

The green data sets were used (see table 1) to show which brownfield sites were over 400 metres from parkland (using buffer analysis). It was thought these sites would be less desirable for housing because of the reduced easy access to green areas. A more sophisticated network analysis was carried out. For example, service areas of 1Km from mainline and underground stations and weighted service areas for shopping centres (according to the size of the centre) were identified and the results were used to identify those brownfield sites that apply to these criteria. It was thought that this process could be used to identify which brownfield sites met a certain number of planning criteria such as less than 1km from a shopping centre, but within 1km of a tube station (Figure 2).

For ease of use and for visualisation purposes, various overlay analyses were carried out and combined with buffering. This includes the selection of brownfield sites that fall within the boundaries of the calculated flood risk area, or those that are within a certain distance from green area.

As was mentioned earlier, we tried to limit the customisation of the software. However, the few changes from the original, out-of-the-box functionality included the integration of a postcode based search tool. This was done to enable the use of an easy and familiar geographical reference, which is common and accessible to a wide range of users (Raper et al., 1992). The second change was the connection to web based information browsing (Figure 3). Finally, for the visualisation scheme, we chose to base the cartographic representation on familiar, well-labelled Ordnance Survey data.

THE PUBLIC PARTICIPATION WORKSHOP

During the first period of system development, an opportunity for testing its use for public participation purposes emerged. This was carried out with a grant from UCL Graduate school, which helped in establishing a network of experts with knowledge in planning, geomatics, GIS, public participation and inclusionary processes and environmental research. This element enabled the integration of the views and needs of this audience to the project scheme.

Public Participation GIS (PPGIS) is a current active research theme in GISc. The origins of this research are usually traced to from collaborative uses of GIS (Densham et al., 1995)

and GIS critique, epitomised by the publication of "Ground Truth" (Pickles, 1995). The main research themes emerge during NCGIA Initiative 19: GIS and Society (Harris and Weiner, 1996) where the concept itself was suggested and accepted (Schroeder, 1997)². PPGIS has emerged as a test-bed for techniques, methodologies, ideas, and discussion about the social implication of GIS technology. In recent years, this area has grown extensively and the project team consulted the material that emerged from this field during the design of the workshop. Though some previous activities focused on web-based PPGIS (Carver and Openshaw, 1995; Craig, 1998; Kingston et al., 2000), the team involved in the Brownfield project preferred a more personal and contextual approach which is common in collaborative planning research. There is some evidence for integrating similar methodologies in PPGIS (Al-Kodmany, 1998), but it was felt that the experience that was gathered in running various participative techniques, like in-depth group discussions or focus groups, could contribute to this field (see Burgess et al., 1998a; Burgess et al., 1988; Harrison et al., 1998). Furthermore, the approaches that were used to design and run the workshop, was based on an inclusionary and participatory research agenda which relates to many areas in planning and governance (Burgess et al., 1998b)

Based on those grounding, the workshop was aimed to achieve two major goals. First, to enhance our understanding of users' need and requirement, and secondly to explore the adaptability of participatory and inclusionary approaches that are more common in cultural geography research to PPGIS. In this paper, we will focus more on the requirements and needs, as the second aspect deserves a special, and separate attention. As for the practical aspect of the workshop, we aimed to enable participants to learn something about GIS and its uses, while learning from them what they expect to find in such system. Fifteen people encompassing a wide range of computer skills were recruited from community and other voluntary groups based in Wandsworth.

The workshop took place at UCL and was held as a half day session divided into four parts. The workshop started with introduction to the aims of the day and the technology. This introduction was as free from jargon as possible and gave an overview of the richness of information in the system while demonstrating basic GIS technology such as layering of information. Following this introduction, the participants divided into small groups so that they would all have an opportunity to use the GIS "hands-on". A 'GIS expert' (a person with experience with the software and the content of the system) and a facilitator (a person with expertise in group work) supported each group. Tape recorders were used to record the session and Lotus ScreenCam software was used to capture the operations of the computer system. This session lasted for over 90 minutes. Once this session ended, and the participants gain familiarity with the system, its capabilities and content, we have braked for a well-earned lunch, in which all the facilitators and participants had an informal opportunity to raise issues and to share experiences.

The next part of the workshop was conducted in two groups, divided according to Gender. Each group conducted a one-hour discussion on the views of the participants on the system and the systems use. The discussion tried to expand beyond the immediate experience of GIS use as issues like public access to the system, accuracy and trust were raised. The reason for the gender divide was as a result of previous experience of the facilitators involved in previous group work. To conclude the day, a plenary session was held and provided more feedback through a debriefing questionnaire.

² For a review of the origins and background, the interested reader is referred to Schroeder, P., 1997. GIS in Public Participation Settings, UCGIS 1997 Annual Assembly and Summer Retreat, Bar Harbor, Maine. and Chrisman, N., 1999a. Full Circle: More than just Social Implications of GIS, GISOC99, University of Minnesota..

Participants felt that the system had some potential for use as a tool to provide them with a means of presenting their cases for local issues to planners and local authorities in a proactive manner. They felt that the use of such a system might allow for a more informed debate between the public and local authority representatives on a more even footing. However, the public participation day did help to highlight a number of issues. Specifically, it proved that even novice users of GIS grasp the ideas of overlaying quickly and expected to see such analysis results. Furthermore, they quickly realise GIS ability to pursue and demonstrate 'what if?' scenarios of change

In terms of physical access to the information on the system, many of the participants felt that there were large sections of the population that might be excluded if the information was just provided over the Internet. One suggestion for a possible solution was that the Council should provide access to the system in local libraries. Participants were also concerned about the availability of software and the cost implications to a local group or individuals. Furthermore, some felt that many people would not have the necessary computer literacy or expertise to use the system and that if they had been left on their own, they would not have got very far. This would pose a real problem even if the system were available in libraries, as some people felt they would lack the confidence to ask for help. It is important to note that most of these aspects have been identified in the PPGIS literature (Kingston et al., 2000) and that some have even provided an account for the use of GIS by local community group (Ghose, 1999).

As for the issue of information requirement, the workshop helped us in consolidating the data sets needs. The participants felt that the system would benefit from a range of additional data sets such as proposed parking schemes, traffic densities and flows, schools, cycle routes and landmarks such as local rivers. Furthermore, they felt that an up-to-date information on population density, schools and other socio-economic variables would be helpful. Such information might enable pro-actively from the local community themselves. However, the network analysis, which showed up areas that were not well served by public transport, was seen as valuable. Participants wanted to be able to add their own information to the GIS so as to ensure that the planning process was not driven entirely by the concerns of 'experts'. Many were enthusiastic about the new possibilities for gaining new knowledge about their local area offered by the GIS. Noteworthy, some participants were unhappy with the level of data accuracy and reliability - especially the lack of local information (like local amenities or the type of shopping that each shopping area provides).

On the organisational settings, participants were not convinced that updating of the system would be done regularly if it were the responsibility of the local authorities. Instead academic institutions were seen as reliable agents who could take responsibility for updating the GIS.

The PPGIS workshop identified some discrepancies in the system in relation to the availability of more detailed information on the surroundings of each brownfield site - it was noted that most group felt "disoriented" once the zoomed in to a specific area, and the skeletal Meridian data set became too abstract. As a result, Aerial photographs were added around major brownfield sites.

EXPOSING THE SYSTEM TO POTENTIAL USERS

After the workshop, the brownfield GIS was further developed and completed. Once the system was ready for presentation and discussion, a series of presentations were arranged. During these presentations, the system was presented to representatives of bodies and agencies with an interest in brownfield issues. Each presentation was followed by a 1 hour discussion on the merits and the discrepancies of the specific system and the use of GIS for

this issue. The audience for the presentations included representatives from the Environmental Agency professional, both those involved in the day-by-day activities of the agency and the IT and GIS support personnel. Another presentation included representatives from local authorities and the Government Office for London.

A major issue that was raised by professionals who work daily with the planning system and with GIS was the issue of copyright and the cost of database creation and maintenance. These issues were seen as the major obstacles before the implementation of a full-scale brownfield GIS for London could be developed. The participants of the presentations agreed on the necessity to have such database, and that it will streamline brownfield development, and improve the level of discussion. These presentations provided insights into the future uses and development of such a system by the most likely users.

DISCUSSION

The lessons from the brownfield GIS development process can be divided into 3 areas. First, we will comment on the nature of the development cycle and reflect on the state-of-the-art in GIS, GI and GISc. Second, we will comment on the contribution of GIS to the current debate about brownfield development. We will close with some comment and questions about current PPGIS research and the ways in which our project fits to the wider research agenda.

Iterative development

The system was developed using an iterative approach by using a series of seminars, demonstrations and a one-day public-participation workshop. This provided invaluable personal contact during the development process.

The use of commercial-off-the-shelf products helped in implementing the project in a very short time scale, and with very limited resources (only one person was dedicated full-time to the project). The support and help from various stakeholders helped immensely in constructing a useful database. This iterative approach might seem an impediment to the development of the system, but instead it actually helped in discovering any missing data sets. For example, during a presentation to the workshop team, the need for postcode data sets emerged which was later integrated into the system.

This cycle is very similar to the concepts and ideas that are now commonplace in Rapid Application Development (RAD) (Reeve and Petch, 1999). In the brownfield GIS we have adopted RAD principles (rapid cycle of assembly, tests, exposure to the user community and so on) are of equal importance in GIS database construction and development.

As the literature that we have reviewed in earlier sections demonstrates, we relied on techniques and approaches that were part of cutting-edge research project only 5 years ago. Indeed, the development in desktop GIS, the capabilities of the software that we have used answers most of the wish list that was described only few years ago for "True desktop GIS" (Elshaw Thrall and Thrall, 1999). Furthermore, the proliferation of off-the-shelf, ready to use GI products (like Cities Revealed) make the task of GIS database assembly much easier. True, our organisational settings meant that it was easier for us to obtain and use these GI data sets and others might find that the resources needed to purchase them are quite significant. This is an issue that often rises in the GI literature (Pipes and Maguire, 1997). However, as a proof of concept we have demonstrated that the infamous 80/20 equation (between data acquisition cost and other cost of GIS project) (Huxhold and Levinsohn, 1995) might be changing, and soon may become irrelevant.

The role of GIS in the brownfield debate

The need to achieve a consensus among all relevant parties, including the public was stressed in Agenda 21, a global action programme for sustainable development (UN, 1992). The Rio

Earth Summit (1992) recommended the active participation of citizens along with governments in the implementation of the Rio agreements. However, this is not easy as it implies the need to adopt new decision making methods that go beyond traditional consultancy frameworks to involve groups and individuals in a partnership approach. This approach emphasises the need to identify a range of issues and concerns and to resolve differences of opinion and conflicts between different interests, so that solutions are designed to meet various points of view (Environment Agency, 1998). The implementation of such an approach was tested as part of this project through the four Brownfield Seminars in February and the Public Participation workshop in June.

The completed system provides a useful tool that demonstrates the advantages that GIS has over more traditional mapping methods; its ease of integrating diverse data sets, updating and Internet links to name a few. However, throughout its development many issues were raised especially relating to the points raised during the iterative development process.

By its very nature, a GIS is data-driven, and its success is dependant on the availability of data. It is unfortunate that the National Land-use Database (NLUD) is not more GIS savvy, and the integration of it with GIS will not be trouble free. However, when considering the urgency of the task to identify brownfield, it is believed that it can be integrated (even as point data) to a GIS scheme and therefore it will be possible to use it as part of analysis of the sort we described above. We have decided to obtain brownfield site information from the UDP's for each local authority, in spite of the lack of currency. In a way, we have demonstrated the potential of polygon-based NLUD.

We have selected an approach of rapid digitisation and integration of multiple data sets, knowing that the database accuracy and precision could be questionable. Some inaccuracy does occur in the digitising and georeferencing process, and as a result some of the data sets did not always correspond to each other very well. However, it is stressed that the system was not intended to be used by surveyors for pin-point accuracy, but more as an information tool to try and encourage more public interest in the planning process and highlight the need for more sustainable development.

Finally, we should note that GIS holds the potential raised by those who have been exposed to the system (participants in the workshop, during the seminars and the presentation) that it should aim to predict the brownfield sites of tomorrow by considering sectors that are likely to produce new sites. Naturally, such information can be politically and commercially sensitive and their inclusion or exclusion is very subjective. However, such potential might be a challenging, yet interesting source for future research.

Public Participation GIS and exploratory GIS

The approach that we have presented during the development of the brownfield GIS and in the course of this paper can be termed "discussion support tool". By this, we mean the use of GIS not just as a decision support tool, where alternatives are explored, quantified and compared using analytical models (Densham, 1991) but more akin to the Nicholas Negroponte concept of "tools to think with for the world at large" (Bennahum, 1995). The focus in this mode of GIS use is not necessary on its geodetic or analytic capabilities (although they do play a major role), but rather on the visual and contextual exploration of the problem situation and issues connected to it. This mode of use relies heavily on GIS capabilities to work "at the speed of discussion" as one of the participants described it and the ability of the expert user to understand, facilitate and perform the analysis on the spot using the full toolbox of GIS capabilities.

It is exactly at that point that our approach differs from the one offered by Web-based PPGIS approaches (Carver et al., 1998; Craig, 1998; Kingston et al., 2000). Following previous discussion about expected functionality of GIS packages (see Elshaw Thrall and

Thrall, 1999) we argue that for a true PPGIS a true GIS is needed. Classic definitions of what GIS constitute (for example Maguire, 1991), the GIS principles offered by the International Association of Assessing Officials (IAAO) (Huxhold and Levinsohn, 1995) or current text books - all discuss the analytical capabilities as part and parcel of what GIS is. Earlier definition went as far as declaring that a specific functionality (polygon overlay) is needed as “proof” for GIS (Chrisman, 1999b). In the same paper Chrisman is offered a more open and inclusive definition of GIS, but also commented about definitions that are too inclusive (Rhind’s):

“In his attempt to be universal, Rhind offers a definition that is so loose that the address book function of a hand-held pocket planner is indistinguishable from a full-function CIS workstation. ...” (Chrisman, 1999b, p. 181).

Similar emphasis on processing and interpretation of spatial data can be found in recent GIS textbooks (for example Heywood et al., 1998). Therefore, some questions must be raised about the needed functionality of Web-based PPGIS. Current examples clearly lack these analytic capabilities (or carry them in a closed form as in Carver and Openshaw, 1995). Maybe the time has come to learn from the lessons of the development of general GIS and to open up the question of which functions are needed to make a true PPGIS. This is not merely a question of definition. The importance of GIS is not in its capability to display interactive maps but in the ability to analyse spatial data. A better understanding of the analytical operations needed and the development of more accessible interfaces to perform these will provide some directions for future research.

One of the major reasons for the success of our workshop - at least as expressed by participants, was the integration of experience GISc researchers (represented by researchers from the Centre for Advanced Spatial Analysis, Jackson Environment Institute and Geomatic Engineering) and researchers with a long track in participatory and inclusionary processes (represented by researchers from the Bartlett and the Environment and Society Research Unit in the department of Geography). We hope to report on this collaboration in more details soon.

From our experience we tend to agree with Harris and Wiener (Harris and Weiner, 1996) assertions as the fundamentals of successful PPGIS implementations:

- Agency driven, but not top-down nor privileged toward conventional expert knowledge
- Local knowledge is valuable and expert
- Broaden access base to spatial information technology and data
- Incorporate socially differentiated multiple realities of landscape
- Integrate GIS and multimedia
- Explore the potential for more democratic spatial decision making through greater community participation
- Assume that spatial decision making is conflict ridden and embedded in local politics

A valuable finding of our workshop is that many of those who are the potential users of PPGIS, like our workshop participants, identified some of these principles and express them without prior knowledge of the research literature.

CONCLUSIONS

Despite the issues related to accuracy and precision, and the lack of current data, there are many advantages of the brownfield GIS over more traditional forms of data capture. By using the approach we described, we have manage to integrate different data sets so comparisons can quickly be made between brownfield sites and environmental data sets. Additional information such as ownership, size of the site and environmental and transport data can

quickly and easily be accessed for each brownfield site in a web environment. It is assumed that the rollout of NLUD during 2000 open-up possibilities to integrate direct access to its database, using Web based interface similar to the one described above. The use of GIS can also enable the creation of a hierarchy of development suitability by comparing brownfield proximity to public amenities such as town centres and public transport.

Despite the drawbacks to the system, the finished product was well received by both the local authorities and the public. It is hoped that this project demonstrated what GIS can achieve for the brownfield debate and furthermore how important it is for the development process to be iterative. Planners need to investigate the spatial relationships between natural, physical and socio-economic variables to explore and evaluate different alternative planning scenarios. Therefore, the value of GIS for urban and environmental planners is its ability to integrate diverse data sets under a common spatial theme.

Reference

- Al-Kodmany, K., 1998. GIS and the Artist: Shaping the Image of a Neighborhood in Participatory Environmental Design, Empowerment, Marginalization, and Public Participation GIS, Santa Barbara, CA.
- Armstrong, M.P., Densham, P.J., Lolonis, P. and Rushton, G., 1992. Cartographic displays to support locational decision making. *Cartography and Geographic Information Systems*, 19(3): 154-164.
- Batty, M., 1993. Using Geographic Information Systems in Urban Policy and Policy-Making. In: M.M. Fischer and P. Nijkamp (Editors), *Geographic information systems, spatial modelling and policy evaluation*. Springer-Verlag, Berlin.
- Bennahum, D.S., 1995. MEME 1.07.
- Bloomfield, D., forthcoming. Towards an evaluative framework for public policy discourses: London's brownfields and a new governance relation. PhD Thesis, University of London, London.
- Brown, I.M., 1999. Developing a Virtual Reality User Interface (VRUI) for geographic information retrieval on the Internet. *Transactions in GIS*, 3(3): 207-220.
- Burgess, J., Clark, J. and Harrison, C.M., 1998a. Respondents' evaluations of a CV survey: A case study based on an economic valuation of the Wildlife Enhancement Scheme, Pevensey levels in East Sussex. *Area*, 30(1): 19-27.
- Burgess, J., Harrison, C.M. and Filius, P., 1998b. Environmental communication and the cultural politics of environmental citizenship. *Environment and Planning A*, 30: 1445-1460.
- Burgess, J., Harrison, C.M. and Limb, M., 1988. People, parks and the urban green: a study of popular meanings and values for open spaces in the city. *Urban Studies*, 25(6): 455-473.
- Burrough, P.A., 1986. Principles of geographical information systems for land resources assessment. Monographs on soil and resources surveys ; 12. Clarendon Press, Oxford.
- Carver, S., Kingston, R. and Turton, I., 1998. Accessing GIS Over the Web: an Aid to Public Participation in Environmental Decision Making.
- Carver, S. and Openshaw, S., 1995. Using GIS to Explore the Technical and Social Aspects of Site Selection, Conference on the Geological Disposal of Radioactive Wastes, Royal Lancaster Hotel, London,.
- Chrisman, N., 1999a. Full Circle: More than just Social Implications of GIS, GISOC99, University of Minnesota.
- Chrisman, N.R., 1999b. What does 'GIS' mean? *Transactions in GIS*, 3(2): 175-186.
- Craglia, M. and Raper, J., 1995. GIS and Multimedia. *Environment and Planning B*, 22(6): 634-636.
- Craig, W.J., 1998. The Internet Aids Community Participation in the Planning Process, Groupware for Urban Planning, Lion, France.
- Densham, P.J., 1991. Spatial Decision Support Systems. In: D.J. Maguire, M.F. Goodchild and D. Rhind (Editors), *Geographical Information Systems: Principles And Applications*. Longman Scientific and Technical, Harlow, England, pp. 403-412.
- Doyle, S., Dodge, M. and Smith, A., 1998. The Potential of Web-based Mapping and Virtual Reality Technologies for Modeling Urban Environments. *Computers, Environment and Urban Systems*, 22(2): 137-155.

- Elshaw Thrall, S. and Thrall, G.I., 1999. Desktop GIS Software. In: P. Longley, F. Goodchild Michael, D.J. Maguire and D. Rhind (Editors), *Geographical Information Systems*. John Wiley & Sons Inc., New York, pp. 1101.
- Fonseca, A., Gouveia, C., Camara, A. and Silva, J.P., 1995. Environmental Impact Assessment with Multimedia Spatial Information Systems. *Environment and Planning B*, 22(6): 637-648.
- Ghose, R., 1999. Use of Information Technology for Community Empowerment: Transforming Geographical Information Systems into Community Information Systems, GISOC99, University of Minnesota.
- Goodchild, M.F., Parks, B.O. and Steyaert, L.T. (Editors), 1993. *Environmental Modeling with GIS*. Oxford University Press, New York, xxiii, 488 pp.
- Harris, T.M. and Weiner, D., 1996. *GIS and Society: The Social Implications of How People, Space and Environment are Represented in GIS*. 96-7, National Center for Geographic Information and Analysis, Santa Barbara, CA.
- Harrison, C.M., Burgess, J. and Clark, J., 1998. Discounted knowledges: Farmers' and residents' understandings of nature conservation goals and policies. *Journal of Environmental Management*, 54(4): 305-320.
- Healey, P., 1997. Collaborative planning : shaping places in fragmented societies. UBC Press, Vancouver, xiii, 338 pp.
- Healey, P., 1998. Collaborative planning in a stakeholder society. *Town Planning Review*, 69(1): 1-21.
- Heuvelink, G.B.M., 1998. Error Propagation in Environmental Modelling with GIS. Research monographs in geographic information systems. Taylor & Francis, London, xviii, 127 pp.
- Huxhold, W.E. and Levinsohn, A.G., 1995. *Managing Geographic Information System Projects. Spatial information systems*. Oxford University Press, New York.
- Kingston, R., Carver, S., Evans, A. and Turton, I., 2000. Web-based public participation geographical information systems: An aid to local environmental decision-making. *Computers, Environment and Urban Systems*, 24(2): 109-125.
- Landauer, T.K., 1995. *The Trouble with Computers: Usefulness, Usability, and Productivity*. MIT Press, Cambridge, Mass., xiii, 425 pp.
- Laurini, R. and Thompson, D., 1992. *Fundamentals of spatial information systems*. APIC series ; no.37. Academic Press, London.
- Maguire, D.J., 1991. An Overview of Definition of GIS. In: D.J. Maguire, M.F. Goodchild and D. Rhind (Editors), *Geographical Information Systems: Principles And Applications*. Longman Scientific and Technical, Harlow, England, pp. 9-20.
- Martin, D., 1991. *Geographic information systems and their socioeconomic applications*. Routledge Geography, environment and planning series. Routledge, London, Routledge. 1991.
- McHarg, I.L. and American Museum of Natural History, 1969. *Design With Nature*. Published for the American Museum of Natural History [by] the Natural History Press, Garden City, N.Y., viii, 197 pp.
- Medyckyj-Scott, D. and Hearnshaw, H.M., 1993. *Human factors in geographical information systems*. Belhaven, London.
- Nyerges, T.L., Mark, D.M., Laurini, R. and Egenhofer, M.J. (Editors), 1995. *Cognitive Aspects of Human-Computer Interaction for Geographic Information Systems*. NATO ASI. Kluwer Academic Publishers, Dordrecht, The Netherlands, 435 pp.
- Pipes, S. and Maguire, F., 1997. Behind the Green Door, Mapping Awareness, pp. 28-29.
- Preece, J., 1995. *Human-computer Interaction*. Addison-Wesley Pub. Co, Wokingham, England.
- Raper, J.F., Rhind David, W. and Shepherd, J., 1992. *Postcodes : the new geography*. Longman Scientific & Technical, Harlow, Essex.
- Rasmussen, J., 1995. Geographic Information Systems, Work Analysis, and System Design. In: T.L. Nyerges, D.M. Mark, R. Laurini and M.J. Egenhofer (Editors), *Cognitive Aspects of Human-Computer Interaction for Geographic Information Systems*. NATO ASI. Kluwer Academic Publishers, Dordrecht, The Netherlands, pp. 435.
- Reeve, D.E. and Petch, J.R., 1999. *GIS, Organisations and People : a Socio-Technical Approach. GIS for beginners*. Taylor & Francis, London.
- Schroeder, P., 1997. *GIS in Public Participation Settings, UCGIS 1997 Annual Assembly and Summer Retreat, Bar Harbor, Maine*.

Shiffer, M.J., 1995. Environmental Review with Hypermedia Systems. Environment and Planning B, 22(3): 359-372.
Tomlinson, R.F. (Editor), 1970. Environment Information Systems. International Geographical Union, Ottawa, Canada, 161 pp.
UN, 1992. Agenda 21, United Nations, Rio de Janeiro.

Aurigi, A., Batty, S., Bloomfield, D., Boott, R., Clark, J., Haklay, M., Harrison, C., Heppell, K., Moreley, J. and Thornton, C., 1999, "UCL Brownfield Research Network", University College London.

Breheny, M and Hall, P (1996) *The people – Where will they go?* London: TCPA
Urban Task Force (199) *Toward Urban Renaissance*, London: DETR

Densham, P. J., Armstrong, M. P. and Kemp, K. K. (1995), *Collaborative Spatial Decision-Making: Scientific Report for the Specialist Meeting*, National Center for Geographic Information and Analysis, Santa Barbara, CA.

Environment Agency, (1998) *SD12 Consensus Building for Sustainable Development*, Sustainable Development publication series.

NATIONAL LAND USE DATABASE (NLUD) <http://www.lgmb.gov.uk/nlud/>

Nature Conservation in Merton: Ecology Handbook 29, London Ecology Unit, 125 Camden High St., London NW1 7JR.

Nature Conservation in Sutton: Ecology Handbook 22, London Ecology Unit, 125 Camden High St., London NW1 7JR.

Nature Conservation in Croydon Ecology Handbook 9, London Ecology Unit, 125 Camden High St., London NW1 7JR.

Pickles, J. (1995) *Ground Truth: the Social Implications of Geographic Information Systems*, Guilford Press, New York.

Reproduced from the Ordnance Survey mapping with the permission of the controller of Her Majesty's Stationery Office © Crown Copyright. Unauthorised reproduction infringes Crown Copyright and may lead to prosecution or civil proceedings. University College London ED 281336 2000

Name	Source	Description
Green/Natural environment Data		
Sites of Special Scientific Interest (SSSI's)	Environment Agency	Areas that have been designated by English Nature as being of outstanding value for their flora, fauna or geology under the Wildlife and Countryside Act 1981.
Metropolitan Open Land	Environment Agency	Areas within the built-up area that are a significant environmental resource to London.
Rivers	Environment Agency	This includes the Thames, Wandle and Beverley Brook rivers.
River Floodplains	Environment Agency	The limits of the floodplain are defined by the peak water level caused by rainfall of a 1 in 100 year return period so such a storm has a 1% chance of occurring in any particular year. The Environment Agency has a statutory responsibility for all flood defence matters concerning main rivers under the Water Resources Act (1991).
Sites of Metropolitan Importance	London Ecology Unit	These sites have the highest priority for protection and contain the best examples of London's habitats alongside rare species or assemblages of species or sites that have particular significance within large areas of heavily built-up London.
Sites of Local Importance	London Ecology Unit	These are sites of particular value to nearby residents or schools and are particularly important in areas otherwise deficient in nearby wildlife sites.
Sites of Borough Importance (I & II)	London Ecology Unit	These sites are important in a borough-wide view but have been split into two sub-categories on the basis of their quality. Damage to any of these sites would result in a significant loss to the borough.
River Thames	Ordnance survey	This file was produced from the Ordnance Survey Meridian data.
Archaeological Priority Zones	Environment Agency	These are areas known to be of archaeological importance because of past finds, excavations or historical evidence.
Infrastructure Data		
Meridian Data	Ordnance Survey	The Meridian dataset was used to show motorways, A roads, B roads and minor roads and mainline railway lines.
Landline Data	Ordnance Survey	This dataset was experimented with as a source of detailed local information.
Overland and Underground Stations	Own	Identifying a six-figure grid reference for each station from a 1:20,000 street atlas collected this data.
Socio/Economic Data		
Population per Enumeration District	Manchester Information & Associated Services (MIMAS)	Socio-economic data was provided through MIMAS
Main Shopping Areas	Unitary Development Plans (UDP's)	These are centres providing a range of facilities for the local population including shops, employment, social and community facilities, transport services, leisure and entertainment.
Brownfield Site Data		
Brownfield sites.	UDP's	These are areas designated by each of the four boroughs for redevelopment and range from vacant land to empty shop units.

Wandle Valley Regeneration Partnership (WVRP) Brownfield Sites.	WVRP	<p>WVRP provided comprehensive information on nine key development sites in the Wandle Valley Strategic Employment Corridor. This data was in an analogue format and was digitised onto the system using ARC/INFO GIS. The sites are:</p> <ul style="list-style-type: none"> • Cane Hill Park, Croydon • Former CMA site in Morden Road • Springfield Hospital, Tooting • Plough Lane Football Ground, Wimbledon • Beddington/Purley Way Cluster • Former Beddington Tip Site, Beddington Lane • Site North of Goat Road • Beddington Farmlands • Anchor Business Centre, Beddington Lane
National Land Use Database (NLUD) Brownfield Sites.	LB Sutton	This data was supplied so it could be compared to the Brownfield polygons digitised from the UDP maps.

Table 1: Data used in the Brownfield Project

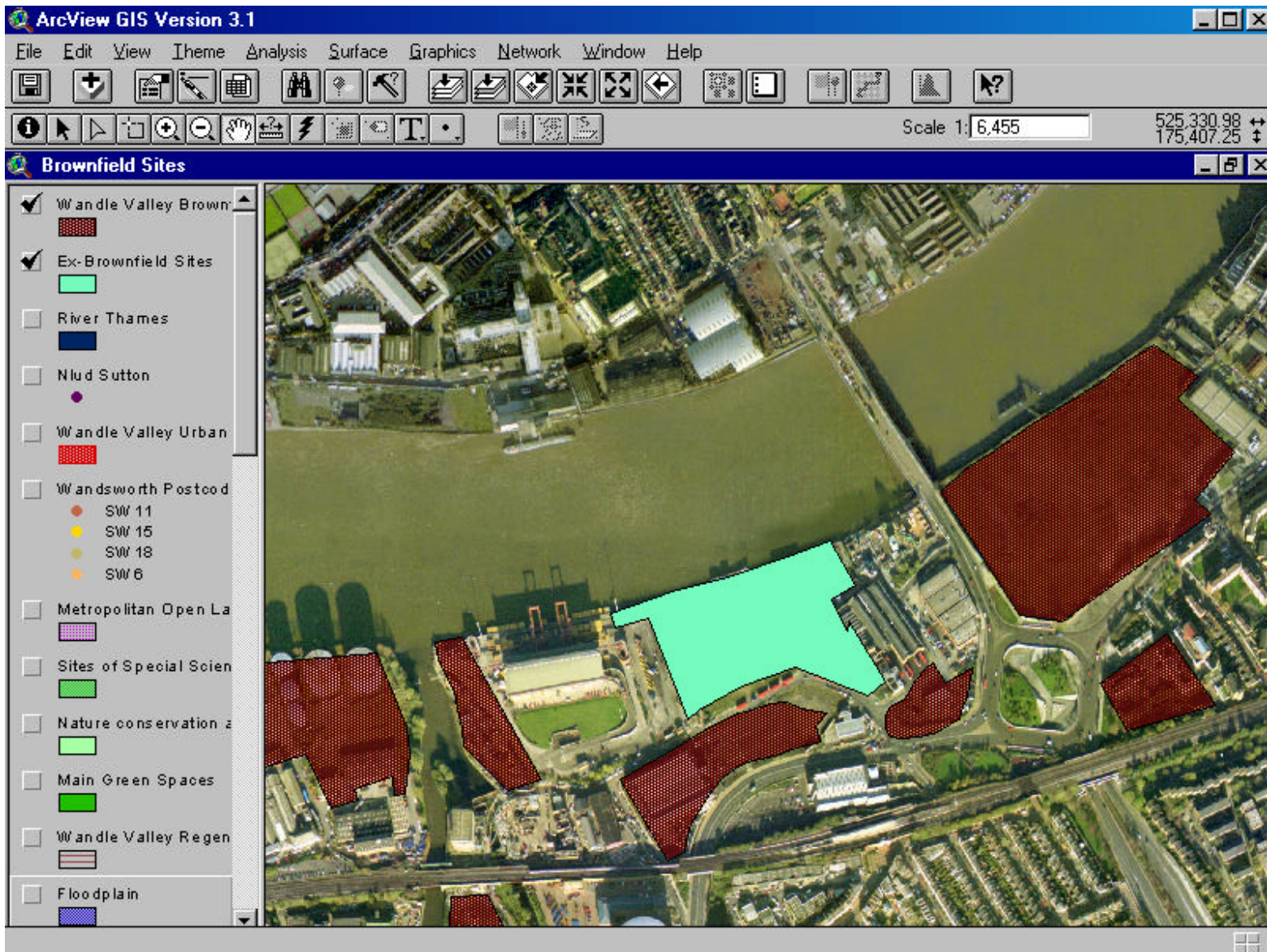


Figure 2: Aerial photography with overlaid digitised brownfield sites

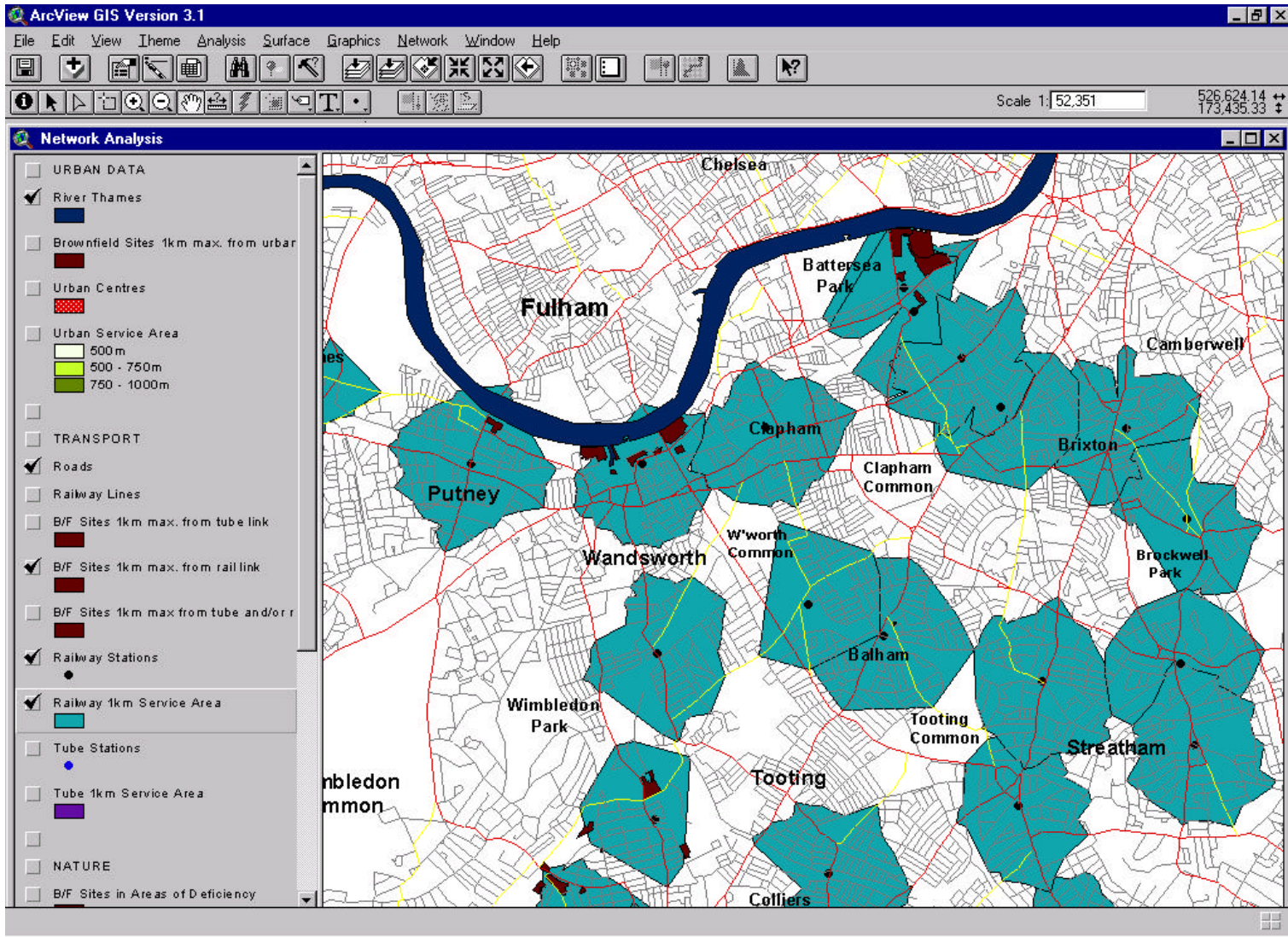


Figure 1: Network analysis showing the service areas around each overland railway station.

ArcView GIS Version 3.1
 File Edit View Theme Analysis Surface Graphics Network Window Help

Scale 1: 54,015 524,647.96
 167,649.13

Brownfield Sites

- BROWNFIELD SITES
- Wandle Valley Brownfield Sites
- Ex-Brownfield Sites
- Wandle Valley Urban Centres
- TRANSPORT
- London Transport
- Tube Stations
- Overland Railway Stations
- LANDLINE DATA

Location: This site lies north of Goat Road, on the Borough boundary and adjoins the Willow Lane Industrial Estate in the north which is in the Borough of Merton. The River Wandle lies on its north, east and western boundaries. An area of Metropolitan Land lies to the south-east and light industry and office uses lie to the south.

Area: 2.1 hectares

Current Use: Metropolitan Open Land

Planning Opportunities: B1, B2 and B8. The uses appropriate to this site are Business (excluding offices), General Industry and Storage and Distribution.

29. 3. 1999

Start Microsoft Office Shortcut Bar ArcView GIS Version ... Untitled Document - Micro... Microsoft Word - Document1 15:36

Figure 3: Hotlinks from each brownfield site to web-based information pages.