

## **Cardiac structural and functional consequences of amyloid deposition by CMR and echocardiography and their prognostic roles**

Daniel S. Knight, MBBS, MD(Res)<sup>a\*</sup>, Giulia Zumbo, MD<sup>a\*</sup>, William Barcella, PhD<sup>b</sup>, Jennifer A. Steeden, M.Eng, PhD<sup>c</sup>, Vivek Muthurangu, MD<sup>c</sup>, Ana Martinez-Naharro, MD<sup>a</sup>, Thomas A. Treibel, MBBS<sup>d</sup>, Amna Abdel-Gadir, MBBS<sup>d</sup>, Heerajnarain Bulluck, MBBS, PhD<sup>e</sup>, Tushar Kotecha, MBChB<sup>a</sup>, Rohin Francis, MBBS<sup>a</sup>, Tamer Rezk, MBBS<sup>a</sup>, Candida C. Quarta, MD, PhD<sup>a</sup>, Carol J. Whelan, MD<sup>a</sup>, Helen J. Lachmann, MD<sup>a</sup>, Ashutosh D. Wechalekar, MD, PhD<sup>a</sup>, Julian D. Gillmore, MD, PhD<sup>a</sup>, James C. Moon, MD<sup>d</sup>, Philip N. Hawkins, PhD, FMedSci<sup>a</sup>, Marianna Fontana, MD, PhD<sup>a</sup>.

\*These authors contributed equally to the manuscript and should be considered joint first authors.

### **Author affiliations:**

- a. National Amyloidosis Centre, University College London, Royal Free Hospital, London, United Kingdom
- b. Department of Statistical Science, University College London, United Kingdom
- c. Centre for Cardiovascular Imaging, Institute of Cardiovascular Science, University College London and Great Ormond Street Hospital for Children, London, United Kingdom
- d. Barts Heart Centre, St. Bartholomew's Hospital, London, United Kingdom
- e. The Hatter Cardiovascular Institute, Institute of Cardiovascular Science, University College London, United Kingdom

**Conflicts of interest:** None

**Relationships with Industry:** None

**Address for correspondence:** Dr Marianna Fontana, MD, PhD, Centre for Amyloidosis & Acute Phase Proteins, Division of Medicine (Royal Free Campus), University College London, Rowland Hill Street, London, NW3 2PF, United Kingdom

Telephone: (+44) 020 7433 2780

Facsimile: (+44) 020 7433 2776

Email: m.fontana@ucl.ac.uk

**Author email addresses:** danielknight@doctors.org.uk, giuliazumbo@hotmail.com, william.barcella.13@ucl.ac.uk, jennifer.steeden@ucl.ac.uk, v.muthurangu@ucl.ac.uk, a.naharro@ucl.ac.uk, thomas.treibel@gmail.com, amnagadir@yahoo.co.uk, h.bulluck@gmail.com, tushar.kotecha@nhs.net, rohinfrancis@gmail.com, t.rezk@ucl.ac.uk, c.quarta@ucl.ac.uk, c.whelan@ucl.ac.uk, h.lachmann@ucl.ac.uk, a.wechalekar@ucl.ac.uk, j.gillmore@ucl.ac.uk, James.Moon@bartshealth.nhs.uk, p.hawkins@ucl.ac.uk, m.fontana@ucl.ac.uk

**Word count (including references and figure captions): 4,935**

## **Structured Abstract**

### **Objectives**

This cross-sectional study aimed to: 1) describe the functional and structural cardiac abnormalities that occur across a spectrum of cardiac amyloidosis burden; 2) identify the strongest cardiac functional and structural prognostic predictors in amyloidosis using cardiac magnetic resonance (CMR) and echocardiography.

### **Background**

Cardiac involvement in light chain and transthyretin amyloidosis is the main driver of prognosis and influences treatment strategies. Numerous measures of cardiac structure and function are assessed by multiple imaging modalities in amyloidosis.

### **Methods**

Three-hundred and twenty-two subjects (311 systemic amyloidosis, 11 TTR gene mutation carriers) underwent comprehensive CMR and transthoracic echocardiography. The probabilities of eleven commonly measured structural and functional cardiac parameters being abnormal with increasing cardiac amyloidosis burden were evaluated. Cardiac amyloidosis burden was quantified using CMR-derived extracellular volume (ECV). The prognostic capacities of these parameters to predict death in amyloidosis were assessed using Cox proportional hazards models.

### **Results**

LV mass and MAPSE by CMR along with strain and E/E' by echocardiography have high probabilities of being abnormal at low cardiac amyloid burden. Reductions in bi-ventricular ejection fractions and elevations in bi-atrial areas occur at high burdens of infiltration. The probabilities of indexed stroke volume, MCF and TAPSE being abnormal occur more gradually with increasing extracellular volume.

Ninety patients (28%) died during a median follow-up of 22 months (interquartile range 10-38 months). Univariable analysis showed that all imaging markers studied significantly predicted outcome. Multivariable analysis showed that TAPSE (hazard ratio, 1.46; 95% confidence interval, 1.16-1.85;  $P<0.01$ ) and indexed stroke volume (hazard ratio, 1.24; 95% confidence interval, 1.04-1.48;  $P<0.05$ ) by CMR were the only independent predictors of mortality.

### **Conclusions**

Specific functional and structural abnormalities characterize different burdens of cardiac amyloid deposition. In a multi-modality imaging assessment of a large cohort of amyloidosis patients, CMR-derived TAPSE and indexed stroke volume are the strongest prognostic cardiac functional markers.

**Key Words:** CMR; echocardiography; amyloidosis; function; prognosis

### **Abbreviations**

AL = light-chain amyloidosis  
ATTR = transthyretin-related amyloidosis  
CMR = cardiac magnetic resonance  
ECV = extracellular volume  
EF = ejection fraction  
LA = left atrial  
LGE = late gadolinium enhancement  
LGS = longitudinal global strain

LV = left ventricular

MAPSE = mitral annular plane systolic excursion

MCF = myocardial contraction fraction

RA = right atrial

RV = right ventricular

SV = stroke volume

TAPSE = tricuspid annular plane systolic excursion

## **Introduction**

Systemic amyloidosis is a fatal disease caused by the progressive deposition of abnormal insoluble protein fibrils in the extracellular space, leading to the loss of normal tissue architecture and function (1). Cardiac amyloidosis is due to intramyocardial amyloid infiltration, which leads to progressive structural and functional changes (2,3). The most frequent types of systemic amyloidosis associated with clinically relevant cardiac involvement are: light-chain amyloidosis (AL) due to a clonal plasma cell dyscrasia, which produces the immunoglobulin light chains of the fibrillary deposits; hereditary, transthyretin-related form (ATTRm), which can be caused by over 100 mutations of transthyretin (TTR), a transport protein mainly synthesized by the liver; and wild-type (non-mutant) transthyretin-related amyloidosis (ATTRwt), which mainly affects the hearts of elderly men (1).

Cardiac involvement in both AL and ATTR amyloidosis is the main predictor of mortality and influences therapeutic choices (4,5). Late gadolinium enhancement (LGE) and extracellular volume (ECV) assessment by cardiac magnetic resonance (CMR) are known to be diagnostic and prognostic in cardiac amyloidosis (2). Echocardiography and CMR are both commonly utilized imaging modalities to assess cardiac amyloidosis that generate a plethora of functional and structural metrics aside from tissue characterization parameters. Many of these cardiac functional and structural parameters demonstrate prognostic value when studied in isolation (3,6-12). However, their relative prognostic importance and their behavior in the natural history of cardiac infiltration have never been investigated.

The aims of this study were to 1) describe the functional and structural cardiac abnormalities that occur across a spectrum of cardiac amyloid burden in AL and ATTR cardiac amyloidosis, and 2) identify the strongest cardiac functional predictors of prognosis in systemic amyloidosis.

## Methods

**Amyloidosis patients.** Subjects were recruited at the National Amyloidosis Centre, Royal Free Hospital, London, United Kingdom, from 2010 to 2015. A retrospective, cross-sectional analysis of 433 patients who underwent CMR and echocardiography was performed. Patients with datasets not containing all of the structural and functional cardiac metrics selected for analysis in this study were excluded. The remaining 322 patients were categorized into 3 groups:

- (i) **Subjects with AL amyloidosis:** 133 patients with biopsy proven systemic AL amyloid (86 male, 65%; age 66 (57-71) years), with biopsies from the myocardium (n=7, 5%) or other tissues (n=126, 95%).
- (ii) **Subjects with ATTR amyloidosis:** 158 patients (139 male, 88%; age 74±8 years) with cardiac ATTR amyloidosis and 20 with suspected cardiac ATTR amyloidosis (12 male, 60%; age 70±15 years) were recruited. The definitions of definite and suspected cardiac ATTR amyloidosis have been previously described (13,14). To summarize, cardiac ATTR amyloidosis was defined as the combination of symptoms with an echocardiogram consistent with or suggestive of cardiac amyloidosis, grade 2 or 3 cardiac uptake on the <sup>99m</sup>Tc-labeled 3,3-diphosphono-1,2-propanodicarboxylic acid (<sup>99m</sup>Tc-DPD) scintigraphy in the absence of a monoclonal gammopathy or, in the presence of monoclonal gammopathy, a cardiac biopsy positive for TTR. Suspected cardiac ATTR amyloidosis was defined by grade 1 cardiac uptake on <sup>99m</sup>Tc-DPD in the absence of monoclonal gammopathy. Seventy-two percent (n = 128) of patients with ATTR amyloidosis had histological proof of ATTR amyloidosis by Congo red and immunohistochemical staining of myocardial (n = 40, 22%) or other tissues (n = 88, 49%). All subjects underwent sequencing of exons 2, 3, and 4 of the *TTR* gene.

(iii) **TTR gene mutation carriers:** In addition, there were 11 subjects with amyloidogenic *TTR* gene mutations (4 male, 36%; age  $46\pm 8$  years) defined as individuals with no evidence of clinical disease (including no cardiac uptake on Tc-DPD scintigraphy and normal echocardiography, CMR, N-terminal pro-brain natriuretic peptide [NT-proBNP] and Troponin T).

**Exclusion criteria:** We excluded all patients with datasets not containing all of the structural and functional cardiac metrics selected for analysis. Patients with contraindications to CMR (such as CMR-incompatible devices) were excluded from the original study cohort. Patients with a glomerular filtration rate  $<30\text{mL}/\text{min}$  underwent a non-contrast study protocol ( $n=5$ ) unless informed consent was obtained for a contrast study protocol for clinical diagnostic purposes ( $n=4$ ). All ethics were approved by the UCL/UCLH Joint Committees on the Ethics of Human Research Committee, and all participants provided written informed consent.

**Echocardiography acquisition and analysis:** Echocardiographic assessments were performed using a Vivid E9 ultrasound machine (GE, Healthcare, Milwaukee, Wisconsin, USA). Image quality was optimized by adjusting probe frequency (range 1.7-2.0MHz) and temporal resolution (60-120 frames per second). LV structure, systolic and diastolic assessment was performed according to published recommendations (15-17). This included the analysis of multiple beats in atrial arrhythmia at the discretion of the clinical study operator. All echocardiography analysis was performed by investigators blinded to the CMR results. The echocardiographic functional parameters assessed in the multivariable model were  $E/e'$  and apical four-chamber longitudinal global strain (LGS). For the former measure, Pulsed-Wave (PW) Tissue Doppler Imaging (TDI) of the septal and lateral mitral annuli in the 4-chamber view was performed to obtain peak early diastolic ( $e'$ ) tissue velocities, with septal and lateral velocities averaged to obtain a mean value.

The peak early diastolic transmitral inflow wave (E) was obtained by PW-Doppler with the sample volume placed at the tips of the mitral valve in the apical 4-chamber view. Myocardial deformation was assessed using commercially available speckle-tracking software (EchoPac PC dimension software version 112, GE Healthcare). Between 2 to 3 cardiac cycles from an apical 4-chamber view were acquired with appropriate image optimisation and digitally stored for offline analysis. The endocardium of the LV was manually traced from the medial and lateral mitral valve annuli and a region of interest (ROI) automatically generated to cover the LV myocardium. The ROIs were adjusted to optimize the tracking quality if needed.

**CMR protocol:** All participants underwent standard CMR on 1.5T clinical scanners (either Avanto or Aera, Siemens Healthcare, Erlangen, Germany). A standard volume and LGE study was performed in all patients. Retrospectively gated balanced steady state free precession (b-SSFP) end-expiratory breath-hold cines were acquired covering the bases to apices of both ventricles in the short-axis for patients in sinus rhythm. Patients with atrial arrhythmia had a similarly planned short-axis biventricular stack of cine images acquired using either prospectively gated b-SSFP cines or real-time cine imaging at the discretion of the clinical study operator. Slice thickness was 7mm with a 3mm slice gap. The gadolinium-based contrast agent used was 0.1mmol/kg of Gadoterate meglumine (gadolinium-DOTA, marketed as Dotarem©, Guerbet SA, Paris, France) for LGE imaging as previously described (2). For native T1 mapping, basal and mid ventricular short axis, and 4-chamber long-axis were acquired using the shortened modified look-locker inversion recovery (ShMOLLI) or modified look-locker inversion recovery (MOLLI) sequences after regional shimming, as previously described(18).

**CMR image analysis:** All CMR images and maps were analysed offline. All CMR analysis was performed by investigators blinded to the echocardiography results. Endocardial borders of both

ventricles were manually traced at end-diastole and end-systole, the time points of which were identified by the largest and smallest cavity areas respectively. Left ventricular (LV) stroke volume (SV) was the difference between the LV end-diastolic volume (EDV) and LV end-systolic volume (ESV), and ejection fraction (EF) was calculated as  $(SV/EDV) \times 100$ . LV mass was calculated from the end-diastolic frames by manually tracing an epicardial contour. The papillary muscles and trabeculae excluded from the blood pool by the endocardial contour (thus they were included when measuring mass and excluded when measuring cavity volumes). Annular plane systolic excursion for both the mitral (MAPSE) and tricuspid (TAPSE) valves were analyzed for the lateral valvular annulus. Maximal biatrial areas were manually traced at the ventricular end-systolic frames from a 4-chamber cine.

ECV was used as the primary measure of cardiac amyloidosis burden, and was calculated as previously described(19). To summarize, T1 values were obtained by drawing a single region of interest (ROI) in each of the 4 required areas: myocardial T1 estimates (basal to mid septum in 4-chamber map) and blood T1 estimates (LV cavity blood pool in 4 chamber map, avoiding the papillary muscles) before and after contrast administration. Hematocrit was taken in all subjects immediately before each CMR study. ECV was calculated as: myocardial ECV =  $(1 - \text{hematocrit}) \times (\Delta R1_{\text{myocardium}} / \Delta R1_{\text{blood}})$ , where  $R1 = 1/T1$ .

**Statistical Analysis:** Statistical analysis was performed using SPSS 24.0 (IBM Corporation, Armonk, New York, USA) and R programming language (<http://r-project.org/>). Data were examined for normality using the Kolmogorov-Smirnov normality test. Descriptive statistics are expressed as mean  $\pm$  standard deviation (SD) when normally distributed and median (inter-quartile range, IQR) when non-normally distributed. Proportions are expressed as percentages. Systematic differences between measurements were evaluated with Student's *t*-test (two-tailed)



to compare parametric data, and the Mann-Whitney-U test was used to compare non-parametric data. The  $\chi^2$  test or Fisher's exact test (two-sided) was used to compare proportions data as appropriate. Comparisons between groups were performed by 1-way ANOVA for parametric data and by the Kruskal-Wallis 1-way ANOVA for non-parametric data. *P*-values <0.05 were considered statistically significant.

Eleven functional and structural cardiac variables by echocardiography ( $E/e'$ , LGS) and CMR (indexed LA area, indexed LV mass, indexed RA area, indexed SV, LVEF, MAPSE, RVEF, TAPSE, MCF) were selected a priori based upon clinical relevance. The focus of this study is on the effects of myocardial infiltration on cardiac structure and function, since the prognostic capacities of LGE and ECV assessment in cardiac amyloidosis are already well established (2). Therefore, the statistical analyses included only structural and functional cardiac imaging biomarkers (and no tissue characterization parameters) as the variables under investigation. Biventricular function and biatrial areas were assessed using CMR rather than echocardiography due to the superior accuracy and reproducibility of the former imaging modality for these purposes. MAPSE and TAPSE were also assessed by CMR on the same 4-chamber view as biatrial area measurements as per the standard clinical CMR protocol at our institution. The MCF, defined as the ratio of SV to myocardial volume, has been shown to be prognostic in cardiac amyloidosis(20). Simple logistic regression analysis was performed for evaluating the probability of the selected cardiac structural and functional parameters being abnormal across the spectrum of ECV. Cut-offs for defining abnormalities in these variables were chosen according to published reference guidelines:  $E/e' >8$ (21), indexed LA area  $>15\text{cm}^2/\text{m}^2$ (22), indexed RA area  $>16\text{cm}^2/\text{m}^2$ (22), LGS  $<-20\%$ (23), LVEF  $<57\%$ (22), RVEF  $<52\%$ (22), indexed SV

<42mL/m<sup>2</sup>(22), indexed LV mass >81g/m<sup>2</sup>(22), MAPSE <11mm, TAPSE <16mm, MCF <38%(24).

Survival was evaluated with Cox proportional hazards regression analysis, providing estimated hazard ratios with 95% confidence intervals and Kaplan–Meier curves. The eleven echocardiography and CMR variables along with heart rate at the time of CMR study were first explored with simple Cox regression analysis. The variables that were statistically significant predictors of outcome on simple Cox regression analysis were entered into a multivariable Cox proportional hazards analysis to determine which covariates were independent predictors of mortality. The relationships between candidate predictors was first explored with correlational analysis. Possible collinearity among candidate predictors was subsequently assessed using variance inflation factors with threshold equal 5. Separate multivariable models were performed in order to exclude parameters that are derived from one another (for example, LVEF and MCF both being derived from SV; MCF being derived from SV and myocardial mass). Thus, model A included indexed left ventricular SV and mass (and excluded MCF and LVEF); model B included LVEF and LV mass (SV and MCF were excluded); model C included MCF (SV, LV mass and LVEF were excluded). Sub-analyses of the AL and ATTR amyloidosis patient cohorts were also performed. The Harrell C statistic was calculated for the different models.

## **Results**

### **Study population characteristics**

Details of the 322 subjects are shown in Table 1. The TTR mutations in the 158 patients with definite cardiac ATTR amyloidosis were as follows: V122I, n=30; T60A, n=16; V30M, n=3; E89K, n=2; and E54G, D38Y, F44L and I73V, n=1 each. Of the 20 patients with suspected cardiac ATTR amyloidosis, the TTR mutations were as follows: S77Y, n=3; V122I and V30M,

n=2 each; E54G, G47V, I84S and I107F, n=1 each. Of the 11 asymptomatic individuals with TTR mutations, 6 had TTR V30M, 4 had T60A, and 1 had S77Y. Patients with ATTR amyloidosis were older, had poorer renal function and a higher prevalence of electrocardiographic (ECG) conduction abnormalities. Twenty-three patients were excluded from ECV analysis due to significant renal impairment precluding gadolinium administration (n=5) or due to constraints specific to the clinical circumstances (n=18).

### **Relationship between non-invasive functional metrics and ECV**

The ECV values in the 299 patients who underwent this assessment by CMR were divided into tertiles. Increasing myocardial amyloid burden across these ECV tertiles was associated with several structural and functional changes in both the AL and ATTR patient cohorts (Table 2): more severe diastolic dysfunction and worsening LGS by echocardiography; increased LV mass, increased bi-ventricular end-systolic volumes, decreased bi-ventricular EFs, decreased stroke volume, and worsening bi-ventricular longitudinal function. In ATTR, increasing ECV burden was also associated increased bi-ventricular end-diastolic volumes and increased bi-atrial areas. When using ECV as a marker of cardiac infiltration burden, the CMR and echocardiography functional metrics can be grouped by the probability of becoming abnormal at low or high disease burdens or gradually across the spectrum of myocardial infiltration (Figure 1). Indexed LV mass and MAPSE by CMR along with LGS and E/e' by echocardiography have a high probability of being abnormal at low cardiac amyloid burdens. Conversely, bi-ventricular ejection fractions and bi-atrial areas become abnormal at higher burdens of cardiac infiltration. The probabilities of MCF, TAPSE and indexed stroke volume becoming abnormal increase gradually across the spectrum of ECVs.

### **Non-invasive functional and structural metrics and prognosis**

Ninety patients (28%) died during a median follow-up period of 22 months (interquartile range 10-38 months). All of the imaging metrics studied except for heart rate were predictive of mortality on simple Cox regression analysis (Table 3). Only CMR-derived TAPSE (hazard ratio, 1.46; 95% confidence interval, 1.16-1.85;  $P<0.01$ ) and indexed stroke volume (hazard ratio, 1.24; 95% confidence interval, 1.04-1.48;  $P<0.05$ ) remained independently predictive of mortality in a multivariable Cox model adjusted for age and sex (Table 4, Figure 2). Harrell's C-statistic for this model was 0.73. When performing different multivariable models to avoid statistical coupling of the entered variables, TAPSE remained independently predictive of mortality (Table 4). The marked differences in significance levels from univariable to multivariable analyses are partly due to the correlation amongst covariates (Supplementary Table 1). However, exploring variance inflation factors and using a threshold equal 5 found no evidence of collinearity amongst the parameters entered into the multivariable analyses. Functional parameters by echocardiography and CMR were also entered into multivariable Cox regression models for AL and ATTR patient subgroups (Supplementary Tables 2 and 3, respectively). In ATTR cardiac amyloidosis, TAPSE was consistently significantly associated with mortality (hazard ratio, 1.53; 95% confidence interval, 1.08-2.16;  $P<0.05$ ; Harrell's C-statistic 0.729). Three metrics were consistently significantly associated with mortality in AL cardiac amyloidosis, namely LA area indexed (hazard ratio, 1.53; 95% confidence interval, 1.12-2.09;  $P<0.01$ ), stroke volume indexed (hazard ratio, 1.37; 95% confidence interval, 1.03-1.83;  $P<0.05$ ) and TAPSE (hazard ratio, 1.54; 95% confidence interval, 1.08-2.18;  $P<0.05$ ; Harrell's C-statistic 0.797).

### **Relationship between right ventricular LGE and TAPSE**

Evidence of RV cardiac amyloidosis involvement, defined by the presence of RV LGE, was determined given the significant association of TAPSE with mortality. An increasing prevalence of RV LGE was observed in both AL and ATTR patient cohorts with increasing amyloid burden measured by ECV (Table 2). A total of 229 subjects (70%; 73 (63%) of AL amyloidosis patients, 156 (85%) of ATTR subjects including mutation carriers) on LGE assessment had evidence of RV cardiac amyloidosis, with corresponding significantly lower TAPSE across all patient subgroups (Table 5).

## **Discussion**

In this study we comprehensively describe the structural and functional cardiac abnormalities associated with cardiac infiltration using commonly utilized CMR and echocardiography parameters. To our knowledge, this is also the largest study to identify the strongest prognostic structural and functional cardiac imaging metrics in amyloidosis.

Ejection fraction (EF) is the most ubiquitous marker conventionally used to describe cardiac function, especially in the setting of heart failure. However, symptoms and signs of cardiac decompensation are known to commonly precede significant deterioration in EF in amyloidosis (25). Our data confirm that bi-ventricular EFs tend to be preserved up until higher burdens of cardiac infiltration, with abnormalities in bi-atrial size also reflecting the most advanced stages of the disease process. Echocardiography and CMR functional metrics can be divided into a cascade of three groups that become abnormal sequentially with increasing cardiac amyloid burden as assessed by ECV quantification. Variables more likely to become abnormal at low levels of cardiac infiltration reflect impairment of LV diastolic function and LV longitudinal dysfunction, both of which are not accounted for by global EF. Despite E/e' and myocardial mass being generated by different imaging modalities (echocardiography and CMR

respectively), they become abnormal in parallel across increasing amyloid deposition. This reflects the close relationship between amyloid burden and diastolic dysfunction, particularly in early cardiac involvement. Longitudinal global strain and MAPSE also tend to become abnormal at the lower end of the ECV spectrum. Both of these parameters reflect longitudinal impairment, an early marker of systolic dysfunction that is not accounted for by global EF(26). This is especially pertinent in cardiac amyloidosis due to infiltration starting in the subendocardium, predominantly consisting of longitudinal fibers.

Left ventricular SV, MCF and TAPSE constitute the intermediate group of variables with a probability of being abnormal that rises progressively across the spectrum of increasing amyloid burden. In contrast to EF, SV has a high probability of being abnormal in the earlier stages of cardiac amyloid infiltration. This could be due to the initial increase in myocardial mass conferring a smaller end-diastolic cavity volume. However, the likelihood of SV being abnormal then continues to rise with increasing levels of amyloid burden, possibly reflecting the later development of impaired radial function with progression from subendocardial to transmural amyloid deposition. Thus abnormal SV is likely to represent a composite signal of diastolic dysfunction at low burdens of cardiac amyloidosis and systolic contractile impairment at higher burdens of cardiac infiltration. The progressively increasing likelihood of MCF becoming abnormal with rising ECV reflects the behaviors of the variables from which it is derived, namely SV and myocardial mass. The likelihood of TAPSE being abnormal also increases gradually across the spectrum of rising myocardial infiltration, whereas global RVEF becomes abnormal at high burdens of cardiac involvement. This difference is likely to be due to TAPSE reflecting infiltration of subendocardial longitudinal fibers in the earlier stages of the disease,

whereas radial dysfunction and congestive heart failure manifest late in the natural history of the disease.

Interestingly, TAPSE and indexed SV were the only prognostic markers for mortality in the multivariable model of all amyloidosis patients. TAPSE was the most statistically significant independent marker of prognosis, and was the only prognostic marker common to the sub-group analyses of both AL and ATTR patient cohorts. Right ventricular dysfunction is common in cardiac amyloidosis(7). Furthermore, RV failure is a well-documented independent predictor of prognosis in patients with primary left heart failure(27-29). However, direct RV subendocardial infiltration is likely to be the principal reason behind the prognostic importance of TAPSE in amyloidosis, rather than RV dysfunction as a consequence of LV impairment. This is evidenced by the high prevalence of RV late gadolinium enhancement in both AL and ATTR patient cohorts, and explains why TAPSE rather than RVEF is the key prognostic marker in amyloidosis overall. This is also in contrast to RV pressure-overload states, whereby radial rather than longitudinal contraction more closely reflects global RV function, with global RVEF being a consistently strong predictor of outcome(30-32). The main finding on sub-group analysis of the AL and ATTR patient cohorts was that left atrial area was an additional significant prognostic marker in the AL patient cohort, consistent with previous echocardiography studies in AL amyloidosis (33,34). Thus left atrial dilatation could represent a structural marker of more advanced disease.

### **Study limitations**

The study was retrospective, with approximately one-quarter of patients excluded due to incomplete data acquisition. However, the number of events in the remaining 322 patients is sufficient for the multivariable analyses. The study design was also cross-sectional, with patients

scanned at different stages of presentation and treatment. This might include chemotherapy for patients with AL amyloidosis, with some agents having known cardiotoxic side-effects that could also influence the measurement of the variables under investigation. Furthermore, the assessment of disease progression would require serial assessments of these measures in the same individuals over time. Patients with ATTR amyloidosis might be more likely to present at later stages of cardiac infiltration when symptoms of cardiac failure are manifest, reflected by the smallest proportion of ATTR patients being in the lowest ECV tertile (19%). This might impact upon the changes observed in cardiac markers at low amyloid burdens in this cohort. The inclusion of 20 suspected ATTR cases and 11 asymptomatic TTR gene mutation carriers, all of whom potentially may have subclinical or very early disease, might at least partly offset this limitation. Conversely, the largest proportion of AL patients were in the lowest ECV tertile (62%), again likely representing the manner of clinical presentation. Overall, twenty-three patients did not have ECV measured either due to significant renal dysfunction or clinical constraints at the time of scanning. Patients with implanted cardiac defibrillators or permanent pacemakers were also excluded from CMR study. Given that these patients are known to have an adverse prognosis, their exclusion could affect the survival analysis. However, these limitations all reflect real-world practice and the presentation of patients for clinical evaluation. The simple logistic regression analysis dichotomized each variable as abnormal or normal according to pre-defined cut-off values derived from healthy populations, rather than from patient populations with cardiac amyloidosis. Whilst these cut-off values from a normal population would have less direct clinical relevance to a cardiac amyloidosis predominant population, our aim was to describe the behavioral changes in cardiac markers across the spectrum of cardiac infiltration rather than specify the diagnostic threshold of the cut-off values themselves. Finally, cardiac



biopsy was performed in a minority of patients, but the entire cohort underwent comprehensive composite non-invasive evaluation including DPD scanning. This is our routine clinical protocol, and is known to deliver high diagnostic accuracy.

### **Conclusions**

In the multi-modality cardiac imaging assessment of patients with amyloidosis, TAPSE and left ventricular indexed SV measured by CMR are the most powerful prognostic cardiac functional parameters. They are standard and simply obtained measures, with a likelihood of being abnormal that increases with rising cardiac amyloid burden.

## **Perspectives**

**COMPETENCY IN MEDICAL KNOWLEDGE:** Cardiac involvement in amyloidosis is the main determinant of prognosis. The behavior and prognostic importance of common cardiac functional and structural markers by echocardiography and CMR have been evaluated in a cross-sectional study of patients with systemic amyloidosis. Both TAPSE and indexed stroke volume: (1) have an increasing likelihood of becoming abnormal with rising cardiac amyloid burden, and (2) are independently prognostic in systemic amyloidosis.

**TRANSLATIONAL OUTLOOK:** The behavior of cardiac structural and functional parameters can be interpreted in relation to the pathophysiology of amyloidosis across the spectrum of cardiac disease burden. Prospective clinical studies of serial cardiac imaging assessments are required in order to evaluate the progression of structural and functional cardiac measures with increasing myocardial amyloid burden.

## References

1. Wechalekar AD, Gillmore JD, Hawkins PN. Systemic amyloidosis. *Lancet* 2016;387:2641-54.
2. Fontana M, Pica S, Reant P et al. Prognostic Value of Late Gadolinium Enhancement Cardiovascular Magnetic Resonance in Cardiac Amyloidosis. *Circulation* 2015;132:1570-9.
3. Quarta CC, Solomon SD, Uraizee I et al. Left ventricular structure and function in transthyretin-related versus light-chain cardiac amyloidosis. *Circulation* 2014;129:1840-9.
4. Falk RH, Comenzo RL, Skinner M. The systemic amyloidoses. *N Engl J Med* 1997;337:898-909.
5. Rapezzi C, Merlini G, Quarta CC et al. Systemic cardiac amyloidoses: disease profiles and clinical courses of the 3 main types. *Circulation* 2009;120:1203-12.
6. Bellavia D, Pellikka PA, Dispenzieri A et al. Comparison of right ventricular longitudinal strain imaging, tricuspid annular plane systolic excursion, and cardiac biomarkers for early diagnosis of cardiac involvement and risk stratification in primary systemic (AL) amyloidosis: a 5-year cohort study. *Eur Heart J Cardiovasc Imaging* 2012;13:680-9.
7. Bodez D, Ternacle J, Guellich A et al. Prognostic value of right ventricular systolic function in cardiac amyloidosis. *Amyloid* 2016:1-10.
8. Cappelli F, Porciani MC, Bergesio F et al. Right ventricular function in AL amyloidosis: characteristics and prognostic implication. *Eur Heart J Cardiovasc Imaging* 2012;13:416-22.

9. Cueto-Garcia L, Reeder GS, Kyle RA et al. Echocardiographic findings in systemic amyloidosis: spectrum of cardiac involvement and relation to survival. *J Am Coll Cardiol* 1985;6:737-43.
10. Klein AL, Hatle LK, Taliercio CP et al. Prognostic significance of Doppler measures of diastolic function in cardiac amyloidosis. A Doppler echocardiography study. *Circulation* 1991;83:808-16.
11. Koyama J, Falk RH. Prognostic significance of strain Doppler imaging in light-chain amyloidosis. *J Am Coll Cardiol Img* 2010;3:333-42.
12. Ternacle J, Bodez D, Guellich A et al. Causes and Consequences of Longitudinal LV Dysfunction Assessed by 2D Strain Echocardiography in Cardiac Amyloidosis. *J Am Coll Cardiol Img* 2016;9:126-38.
13. Gillmore JD, Maurer MS, Falk RH et al. Nonbiopsy Diagnosis of Cardiac Transthyretin Amyloidosis. *Circulation* 2016;133:2404-12.
14. Martinez-Naharro A, Treibel TA, Abdel-Gadir A et al. Magnetic Resonance in Transthyretin Cardiac Amyloidosis. *J Am Coll Cardiol* 2017;70:466-477.
15. Lang RM, Bierig M, Devereux RB et al. Recommendations for chamber quantification. *Eur J Echocardiogr* 2006;7:79-108.
16. Gottdiener JS, Bednarz J, Devereux R et al. American Society of Echocardiography recommendations for use of echocardiography in clinical trials. *J Am Soc Echocardiogr* 2004;17:1086-119.
17. Nagueh SF, Appleton CP, Gillebert TC et al. Recommendations for the evaluation of left ventricular diastolic function by echocardiography. *J Am Soc Echocardiogr* 2009;22:107-33.

18. Fontana M, White SK, Banypersad SM et al. Comparison of T1 mapping techniques for ECV quantification. Histological validation and reproducibility of ShMOLLI versus multibreath-hold T1 quantification equilibrium contrast CMR. *J Cardiovasc Magn Reson* 2012;14:88.
19. White SK, Sado DM, Fontana M et al. T1 mapping for myocardial extracellular volume measurement by CMR: bolus only versus primed infusion technique. *J Am Coll Cardiol Img* 2013;6 955-962.
20. Tendler A, Helmke S, Teruya S, Alvarez J, Maurer MS. The myocardial contraction fraction is superior to ejection fraction in predicting survival in patients with AL cardiac amyloidosis. *Amyloid* 2015;22:61-6.
21. Nagueh SF, Smiseth OA, Appleton CP et al. Recommendations for the Evaluation of Left Ventricular Diastolic Function by Echocardiography: An Update from the American Society of Echocardiography and the European Association of Cardiovascular Imaging. *J Am Soc Echocardiogr* 2016;29:277-314.
22. Kawel-Boehm N, Maceira A, Valsangiacomo-Buechel ER et al. Normal values for cardiovascular magnetic resonance in adults and children. *J Cardiovasc Magn Reson* 2015;17:29.
23. Lang RM, Badano LP, Mor-Avi V et al. Recommendations for cardiac chamber quantification by echocardiography in adults: an update from the American Society of Echocardiography and the European Association of Cardiovascular Imaging. *J Am Soc Echocardiogr* 2015;28:1-39 e14.
24. Akwo E. Myocardial contraction fraction, diabetes and heart failure: the multi ethnic study of atherosclerosis. A Thesis Submitted to the Graduate Faculty of Wake Forest

University Graduate School Of Arts And Sciences. August 2012. Available at:  
[https://wakespace.lib.wfu.edu/bitstream/handle/10339/37433/Akwo\\_wfu\\_0248M\\_10329.pdf](https://wakespace.lib.wfu.edu/bitstream/handle/10339/37433/Akwo_wfu_0248M_10329.pdf). Accessed February 1, 2018.

25. Austin BA, Duffy B, Tan C, Rodriguez ER, Starling RC, Desai MY. Comparison of functional status, electrocardiographic, and echocardiographic parameters to mortality in endomyocardial-biopsy proven cardiac amyloidosis. *Am J Cardiol* 2009;103:1429-33.
26. Koyama J, Ray-Sequin PA, Falk RH. Longitudinal myocardial function assessed by tissue velocity, strain, and strain rate tissue Doppler echocardiography in patients with AL (primary) cardiac amyloidosis. *Circulation* 2003;107:2446-52.
27. de Groote P, Millaire A, Foucher-Hossein C et al. Right ventricular ejection fraction is an independent predictor of survival in patients with moderate heart failure. *J Am Coll Cardiol* 1998;32:948-54.
28. Ghio S, Gavazzi A, Campana C et al. Independent and additive prognostic value of right ventricular systolic function and pulmonary artery pressure in patients with chronic heart failure. *J Am Coll Cardiol* 2001;37:183-8.
29. Sun JP, James KB, Yang XS et al. Comparison of mortality rates and progression of left ventricular dysfunction in patients with idiopathic dilated cardiomyopathy and dilated versus nondilated right ventricular cavities. *Am J Cardiol* 1997;80:1583-7.
30. Kind T, Mauritz GJ, Marcus JT, van de Veerdonk M, Westerhof N, Vonk-Noordegraaf A. Right ventricular ejection fraction is better reflected by transverse rather than longitudinal wall motion in pulmonary hypertension. *J Cardiovasc Magn Reson* 2010;12:35.

31. Moledina S, Pandya B, Bartsota M et al. Prognostic significance of cardiac magnetic resonance imaging in children with pulmonary hypertension. *Circ Cardiovasc Imaging* 2013;6:407-14.
32. van Wolferen SA, Marcus JT, Boonstra A et al. Prognostic value of right ventricular mass, volume, and function in idiopathic pulmonary arterial hypertension. *Eur Heart J* 2007;28:1250-7.
33. Mohty D, Pibarot P, Dumesnil JG et al. Left atrial size is an independent predictor of overall survival in patients with primary systemic amyloidosis. *Arch Cardiovasc Dis* 2011;104:611-8.
34. Zhao L, Tian Z, Fang Q. Risk Factors and Prognostic Role of Left Atrial Enlargement in Patients with Cardiac Light-Chain Amyloidosis. *Am J Med Sci* 2016;351:271-8.

## Figure legends

**Figure 1: The probability of cardiac structural and functional variables being abnormal across the spectrum of cardiac amyloid burden (as defined by ECV).** Variables can be categorized into three groups according to their likelihood of being abnormal; either predominantly at low or high burdens of cardiac infiltration, or with a progressively rising probability of being abnormal across the spectrum of myocardial amyloid burden (intermediate). *LV*, left ventricular; *SV*, stroke volume; *LVEF*, left ventricular ejection fraction; *RVEF*, right ventricular ejection fraction; *MAPSE*, mitral annular plane systolic excursion; *TAPSE*, tricuspid annular plane systolic excursion; *LA*, left atrial; *RA*, right atrial; *ECV*, extracellular volume.

**Figure 2: Kaplan–Meier curves for TAPSE (left) and indexed stroke volume (right).** Kaplan-Meier curves displaying event-free survival in all patients according to (left) CMR-derived TAPSE  $\geq 16$ mm or  $< 16$ mm and (right) indexed stroke volume  $\geq 42$ mL/m<sup>2</sup> or  $< 42$ mL/m<sup>2</sup>. *SV<sub>i</sub>*, indexed stroke volume; *TAPSE*, tricuspid annular plane systolic excursion.



**Table 1 – Main clinical characteristics and ECG findings in patients with AL and ATTR amyloidosis**

	<b>All Patients (n=322)</b>	<b>AL Patients (n=133)</b>	<b>ATTR Patients (n=189)</b>	<b>ATTR Patients (n=189)</b>		
				<b>Definite (n=158)</b>	<b>Suspected (n=20)</b>	<b>Gene mutation carriers (n=11)</b>
<b>Age, y</b>	71 (63-77)	66 (57-71)‡	74 (68-80)	75 (70-81)	74 (52-83)	45 (42-53)
<b>Female, n (%)</b>	81 (25.2%)	47 (35.3%)‡	34 (18.0%)	19 (12%)	8 (40%)	7 (63.6%)
<b>Ethnicity, n (%)</b>						
<b>White</b>	267 (82.9%)	120 (90.2%)	147 (77.8%)	119 (75.3%)	17 (85.0%)	11 (100%)
<b>Black</b>	48 (14.9%)	6 (4.5%)‡	42 (22.2%)	39 (24.7%)	3 (15%)	0 (0%)
<b>Asian</b>	5 (1.6%)	5 (3.8%)	0 (0%)	0 (0%)	0 (0%)	0 (0%)
<b>Arab</b>	1 (0.3%)	1 (0.8%)	0 (0%)	0 (0%)	0 (0%)	0 (0%)
<b>Mixed</b>	1 (0.3%)	1 (0.8%)	0 (0%)	0 (0%)	0 (0%)	0 (0%)
<b>Clinical history of hypertension, n (%)</b>	63 (19.6%)	27 (20.3%)	36 (19.0%)	32 (20.3%)	3 (15.0%)	1 (9.1%)
<b>eGFR, mL.min<sup>-1</sup>.1.73m<sup>2</sup></b>	67 (48-84)	75 (50-90)†	63 (47-79)	59 (45-73)	82 (62-89)	86 (76-100)

<b>Systolic BP, mmHg</b>	120 (110-133)	121 (109-138)	120 (110-130)	119 (110-129)	128 (114-148)	121 (112-132)
<b>Diastolic BP, mmHg</b>	72 (65-80)	72 (65-83)	71 (65-79)	71 (64-79)	70 (67-78)	75 (69-81)
<b>NT-proBNP, pmol/L</b>	220 (86-467)	170 (65-389)*	280 (112-522)	322 (172-591)	27 (13-118)	7 (3-9)
<b>6 MWT, meters</b>	330±136	321±127	335±141	313±133	374±141	526±60
<b>Sinus rhythm, n (%)</b>	155 (48.1%)	31 (23.3%)‡	124 (65.6%)	96 (60.8%)	18 (90.0%)	10 (90.9%)
<b>Heart rate (bpm)</b>	73±13	78±13‡	69±12	69±13	71±11	70±12
<b>PR, ms</b>	184 (157-214)	168 (148-194)‡	195 (162-224)	202 (184-232)	170 (153-195)	144 (130-154)
<b>QRS, ms</b>	102 (92-120)	98 (88-109)‡	106 (94-132)	108 (96-146)	94 (88-112)	88 (84-92)
<b>Sum limb leads voltage, mm</b>	29 (21-39)	26 (19-36)*	30 (23-39)	29 (21-39)	33 (26-52)	37 (30-38)
<b>Sum chest leads voltage, mm</b>	78 (62-100)	73 (57-93)†	82 (64-106)	84 (65-108)	69 (63-88)	72 (57-86)
<b>Medications, n (%)</b>						
<b>Beta-blocker</b>	98 (30.4%)	29 (21.8%)‡	69 (36.5%)	67 (42.4%)	2 (10.0%)	0 (0%)
<b>Loop diuretic</b>	183 (56.8%)	54 (40.6%)‡	129 (68.3%)	124 (78.5%)	5 (25.0%)	0 (0%)
<b>Aldosterone</b>	76	17	59 (31.2%)	57	2 (10.0%)	0 (0%)

<b>antagonist</b>	(23.6%)	(12.8%)‡		(36.1%)		
<b>ACE inhibitor or</b>	117	36		78		
<b>angiotensin receptor</b>	(36.3%)	(27.1%)‡	81 (42.9%)	(49.4%)	3 (15.0%)	0 (0%)
<b>blocker</b>						

\* $P < 0.05$ , † $P < 0.01$ , ‡ $P < 0.001$  for AL versus ATTR amyloidosis patients.

ACE, angiotensin converting enzyme; AL, light-chain amyloidosis; ATTR, transthyretin amyloidosis; BP, blood pressure; eGFR, estimated glomerular filtration rate; NT-proBNP, N-terminal pro-brain natriuretic peptide; 6 MWT, 6 minute walk test.

All normally distributed data are presented as mean±standard deviation, non-parametric data are presented as median (Q1-Q3) and proportions as n (%).

**Table 2 – CMR and echocardiographic findings in patients with AL and ATTR amyloidosis**

	<b>All Patients (n=322)</b>	<b>AL Patients (n=116)</b>			<b>ATTR Patients (n=183)</b>		
<b>ECV</b>	0.56 <sup>∞</sup> (0.43-0.65)	0.45 (0.37-0.56)			0.61 (0.51-0.69) <sup>‡</sup>		
<b>ECV tertile</b>		0.23- 0.48 (n=72, 62%)	0.49- 0.61 (n=31, 27%)	0.62- 0.92 (n=13, 11%)	0.23- 0.48 (n=35, 19%)	0.49- 0.61 (n=59, 32%)	0.62- 0.92 (n=89, 49%)
<b><i>Echocardiography parameters</i></b>							
<b>IVSd, cm</b>	1.5 (1.3-1.7)	1.2 (1.1- 1.3)	1.4 (1.3- 1.5)	1.6 (1.5- 1.75) <sup>†</sup>	1.1 (1.0- 1.5)	1.6 (1.4- 1.7)	1.7 (1.6- 1.9) <sup>‡</sup>
<b>E wave, cm/s</b>	0.81 (0.66- 0.95)	0.76 (0.59- 0.93)	0.90 (0.79- 1.01)	0.82 (0.63- 0.95) <sup>*</sup>	0.76 (0.65- 0.87)	0.86 (0.74- 1.02)	0.80 (0.69- 0.95) <sup>*</sup>
<b>A wave, cm/s</b>	0.59 (0.37- 0.78)	0.71 (0.59- 0.88)	0.60 (0.41- 0.82)	0.32 (0.21- 0.75) <sup>†</sup>	0.62 (0.55- 0.81)	0.61 (0.38- 0.74)	0.31 (0.25- 0.46) <sup>‡</sup>
<b>E/A</b>	1.35 (0.92- 2.30)	0.93 (0.78- 1.37)	1.53 (0.94- 2.42)	1.61 (0.95- 2.86) <sup>†</sup>	1.16 (0.95- 1.35)	1.50 (1.00- 2.39)	2.48 (1.79- 3.18) <sup>‡</sup>
<b>Average e', cm/s</b>	0.06 (0.05- 0.08)	0.07 (0.06-	0.06 (0.05-	0.04 (0.03-	0.08 (0.07-	0.05 (0.04-	0.05 (0.04-

		0.09)	0.08)	0.07)†	0.11)	0.07)	0.06)‡
<b>E/e'</b>	14 (9-19)	10 (8-16)	15 (10-19)	21 (10-27)†	9 (6-12)	15 (12-20)	17 (13-21)‡
<b>E-wave deceleration time, ms</b>	181 (148-215)	200 (162-241)	180 (131-207)	166 (115-235)	195 (156-227)	185 (150-225)	165 (139-191)†
<b>Strain, %</b>	13 (9-17)	18 (14-20)	12 (8-16)	9 (7-11)‡	19 (17-20)	12 (10-15)	9 (7-11)‡
<b>CMR parameters</b>							
<b>LVEDV<sub>i</sub>, mL/m<sup>2</sup></b>	61 (52-70)	59 (52-67)	57 (45-62)	59 (48-67)	60 (50-70)	60 (51-73)	68 (59-80)†
<b>LVESV<sub>i</sub>, mL/m<sup>2</sup></b>	22 (16-32)	17 (13-23)	17 (11-25)	27 (20-33)†	19 (12-22)	20 (16-33)	33 (25-43)‡
<b>RVEDV<sub>i</sub>, mL/m<sup>2</sup></b>	63 (54-76)	59 (51-67)	56 (49-65)	61 (52-67)	60 (53-70)	62 (53-76)	72 (63-89)‡
<b>RVESV<sub>i</sub>, mL/m<sup>2</sup></b>	25 (18-37)	19 (16-25)	21 (14-28)	26 (21-42)*	20 (16-26)	25 (18-30)	38 (31-50)‡
<b>LV SV<sub>i</sub>, ml/m<sup>2</sup></b>	37±10	42±8	36±9	30±9‡	41±8	38±8	33±9‡
<b>LVEF, %</b>	63 (50-72)	71 (65-75)	68 (57-76)	57 (42-62)‡	71 (64-77)	64 (56-71)	50 (40-58)‡
<b>RVEF, %</b>	60 (49-68)	67 (60-73)	64 (52-71)	52 (36-57)‡	66 (63-72)	60 (52-67)	47 (36-55)‡
<b>MAPSE, mm</b>	8 (6-10)	10 (8-13)	7 (5-9)	4 (4-6)‡	12 (10-)	8 (6-9)	6 (5-8)‡

					13)		
<b>TAPSE, mm</b>	14 (10-19)	19 (14-22)	14 (9-20)	10 (8-14)‡	20 (18-24)	14 (11-17)	11 (8-13)‡
<b>LV mass<sub>i</sub>, g/m<sup>2</sup></b>	109 (80-137)	79 (63-99)	96 (80-111)	122 (108-144)‡	72 (60-95)	118 (102-139)	145 (124-167)‡
<b>LA area<sub>i</sub>, cm<sup>2</sup>/m<sup>2</sup></b>	15±4	13±3	13±4	15±2*	13±3	16±3	17±3‡
<b>RA area<sub>i</sub>, cm<sup>2</sup>/m<sup>2</sup></b>	13 (10-16)	12 (10-14)	12 (10-14)	10 (9-15)	12 (10-13)	13 (11-15)	16 (14-19)‡
<b>RV LGE<sub>∞</sub></b>	229 (77%)	34/72 (47%)	28/31 (90%)	11/13 (85%)‡	13/35 (37%)	57/59 (97%)	86/89 (97%)‡
<b>Precontrast T1, ms</b>	1089 (1049-1127)	1046 (999-1085)	1135 (1100-1175)	1164 (1119-1195)‡	1003 (963-1052)	1086 (1067-1106)	1115 (1091-1142)‡
<b>MCF, %</b>	35.5 (25.4-54.9)	56.3 (42.9-71.4)	38.0 (30.1-51.8)	24.1 (19.8-33.3)‡	62.2 (36.9-72.3)	34.2 (25.5-41.3)	24.2 (19.4-28.3)‡

∞less 23 patients who did not have ECV measured

\* $P < 0.05$ , † $P < 0.01$ , ‡ $P < 0.001$  for the distribution of variables across ECV tertiles in the AL and ATTR patient cohorts.

AL, light-chain amyloidosis; ATTR, transthyretin amyloidosis; IVSd, interventricular septum

thickness in diastole; LV, left ventricular; RV, right ventricular; EDV<sub>i</sub>, end diastolic volume indexed; ESV<sub>i</sub>, end systolic volume indexed; SV<sub>i</sub>, stroke volume indexed; LVEF, left ventricular ejection fraction; RVEF, right ventricular ejection fraction; MAPSE, mitral annular plane systolic excursion; TAPSE, tricuspid annular plane systolic excursion; LV mass<sub>i</sub>, left ventricular mass indexed; LA area<sub>i</sub>, left atrial area indexed; RA area<sub>i</sub>, right atrial area indexed; RV LGE, right ventricular late gadolinium enhancement, ECV, extracellular volume.

All normally distributed data are presented as mean±standard deviation, non-parametric data as median (Q1-Q3) and proportions as n (%).

**Table 3. Simple Cox regression analysis of risk of death in the overall population**

Variables	Univariable	
	HR (95% CI)	P
Heart rate (bpm)	1.01 (0.99-1.02)	0.608
E/e' each 1 unit increment	1.03 (1.01-1.05)	0.005 <sup>†</sup>
LV LGS, each 2% decrement	1.24 (1.13-1.36)	0.000004 <sup>‡</sup>
LV mass indexed, each 10g/m <sup>2</sup> increment <sup>(23)</sup>	1.07 (1.02-1.13)	0.009 <sup>†</sup>
LA area indexed, each 1.8cm <sup>2</sup> /m <sup>2</sup> increment <sup>(23)</sup>	1.25 (1.10-1.41)	0.001 <sup>†</sup>
RA area indexed, each 1.8cm <sup>2</sup> /m <sup>2</sup> increment <sup>(23)</sup>	1.18 (1.07-1.29)	0.001 <sup>†</sup>
LVEF, each 3% decrement	1.12 (1.07-1.17)	5.0x10 <sup>-7</sup> <sup>‡</sup>
RVEF, each 3% decrement	1.14 (1.08-1.19)	1.9x10 <sup>-7</sup> <sup>‡</sup>
SV indexed, each 5mL/m <sup>2</sup> decrement	1.40 (1.24-1.57)	4.8x10 <sup>-8</sup> <sup>‡</sup>
MAPSE, each 2.2mm decrement	1.43 (1.23-1.66)	0.000002 <sup>‡</sup>



<b>TAPSE, each 3.6mm decrement</b>	1.70 (1.45-2.00)	$1.3 \times 10^{-10} \ddagger$
<b>MCF, each 10% decrement<sup>(21)</sup></b>	1.55 (1.32-1.81)	$3.5 \times 10^{-8} \ddagger$

\* $P < 0.05$ , † $P < 0.01$ , ‡ $P < 0.001$

LV, left ventricular; LGS, longitudinal global strain; SV, stroke volume; LVEF, left ventricular ejection fraction; RVEF, right ventricular ejection fraction; MAPSE, mitral annular plane systolic excursion; TAPSE, tricuspid annular plane systolic excursion; LA, left atrial; RA, right atrial; MCF, myocardial contraction fraction.

**Table 4. Multivariable Cox regression analysis of risk of death in the overall population**

Variables	Model A		Model B		Model C	
	HR (95% CI)	P	HR (95% CI)	P	HR (95% CI)	P
<b>E/e' each 1 unit increment</b>	1.02 (0.98-1.05)	0.40	1.02 (0.98-1.06)	0.33	1.00 (0.96-1.04)	0.99
<b>LV LGS, each 2% decrement</b>	1.02 (0.89-1.18)	0.76	1.03 (0.89-1.19)	0.69	1.08 (0.94-1.25)	0.27
<b>LV mass indexed, each 10g/m<sup>2</sup> increment<sup>(23)</sup></b>	0.97 (0.90-1.05)	0.49	0.95 (0.88-1.02)	0.16		
<b>LA area indexed, each 1.8cm<sup>2</sup>/m<sup>2</sup> increment<sup>(23)</sup></b>	1.18 (0.99-1.40)	0.060	1.11 (0.95-1.30)	0.20	1.08 (0.93-1.26)	0.32
<b>RA area indexed, each 1.8cm<sup>2</sup>/m<sup>2</sup> increment<sup>(23)</sup></b>	1.02 (0.90-1.16)	0.71	1.02 (0.89-1.16)	0.81	1.02 (0.90-1.15)	0.79
<b>LVEF, each 3% decrement</b>			1.04 (0.96-1.14)	0.33		
<b>RVEF, each 3% decrement</b>	1.02 (0.95-1.10)	0.60	1.00 (0.91-1.09)	0.93	1.02 (0.95-1.09)	0.60

<b>SV indexed, each 5mL/m<sup>2</sup> decrement</b>	1.24 (1.04- 1.48)	0.019*				
<b>MAPSE, each 2.2mm decrement</b>	1.00 (0.82- 1.22)	0.99	1.03 (0.85- 1.26)	0.74	1.02 (0.84- 1.24)	0.84
<b>TAPSE, each 3.6mm decrement</b>	1.46 (1.16- 1.85)	0.0014 <sup>†</sup>	1.55 (1.23- 1.96)	0.0002 6 <sup>‡</sup>	1.48 (1.17- 1.87)	0.0012 <sup>†</sup>
<b>MCF, each 10% decrement<sup>(21)</sup></b>					1.25 (1.00- 1.57)	0.053
<b>C-statistic</b>	0.729 (0.639, 0.819)		0.724 (0.634, 0.814)		0.725 (0.635, 0.815)	

\* $P < 0.05$ , <sup>†</sup> $P < 0.01$ , <sup>‡</sup> $P < 0.001$

LV, left ventricular; LGS, longitudinal global strain; SV, stroke volume; LVEF, left ventricular ejection fraction; RVEF, right ventricular ejection fraction; MAPSE, mitral annular plane systolic excursion; TAPSE, tricuspid annular plane systolic excursion; LA, left atrial; RA, right atrial; MCF, myocardial contraction fraction.

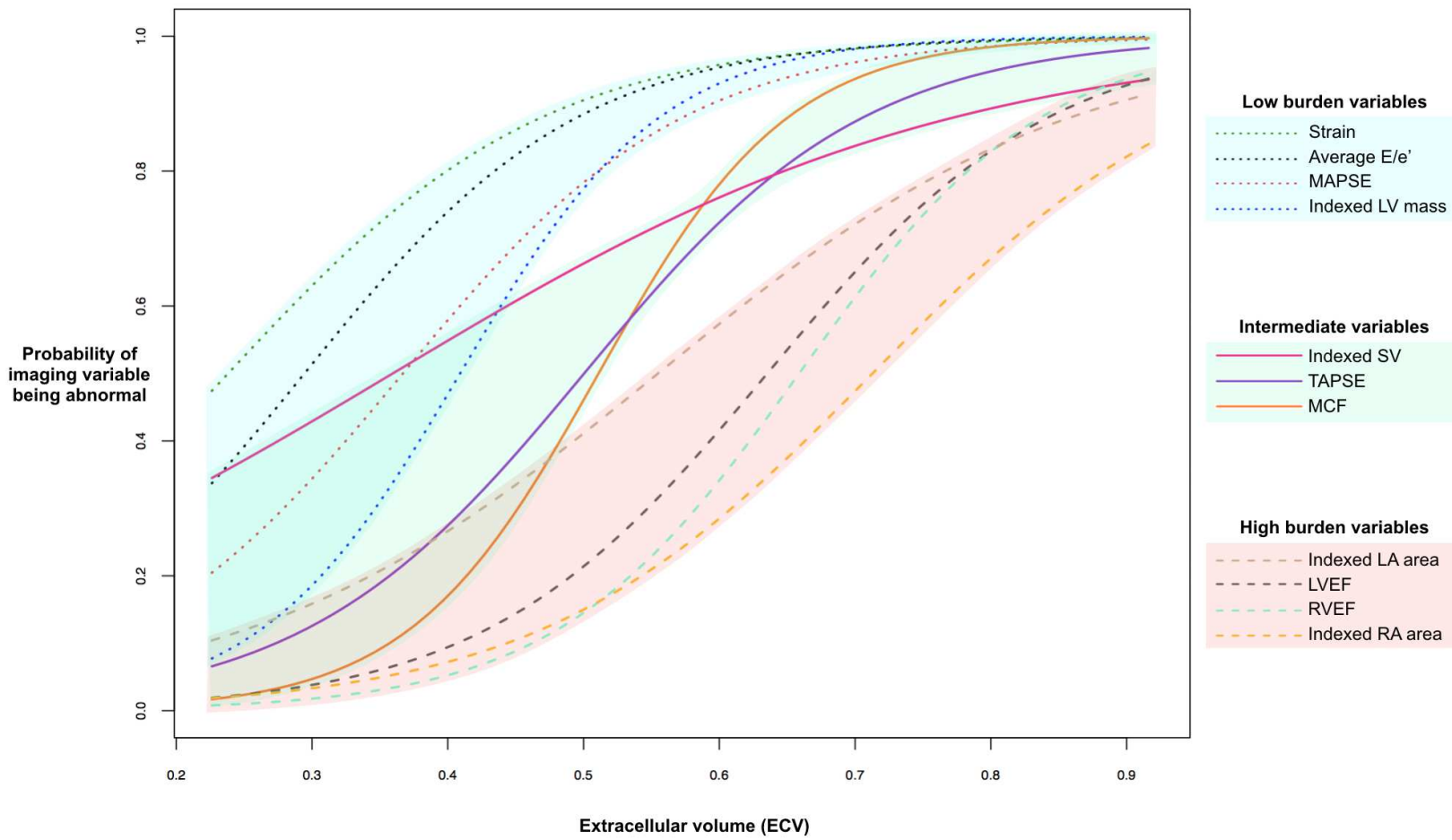
**Table 5 – Relationship between RV LGE and TAPSE in patients with AL and ATTR amyloidosis**

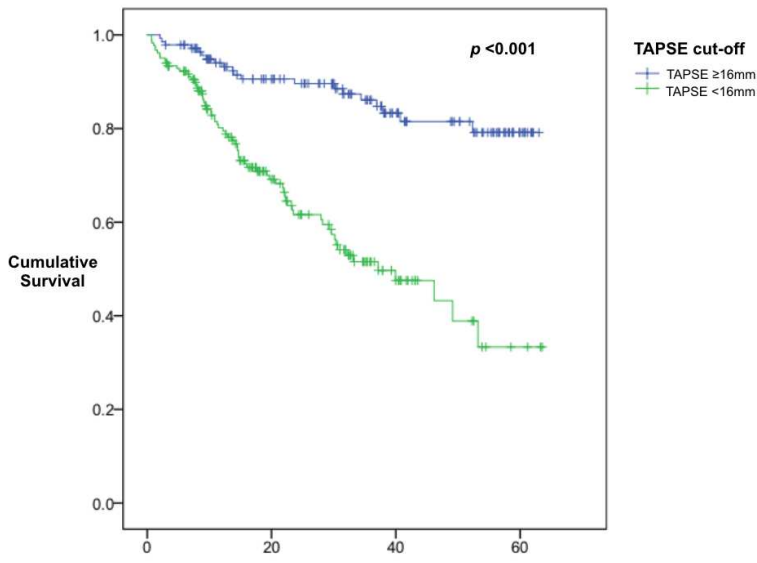
	All subjects (n=299)		AL (n=116)		ATTR (n=183)	
	RV LGE present	RV LGE absent	RV LGE present	RV LGE absent	RV LGE present	RV LGE absent
<b>N (%)</b>	229 (77)	70 (23)†	73 (63)	43 (37)*	156 (85)	27 (15)†
<b>TAPSE</b>	12 (9-16)	21 (17-24)†	14 (10-19)	21 (17-24)†	12 (9-15)	20 (18-25)†

\* $P < 0.01$ , † $P < 0.001$  for differences between RV LGE positive and negative groups.

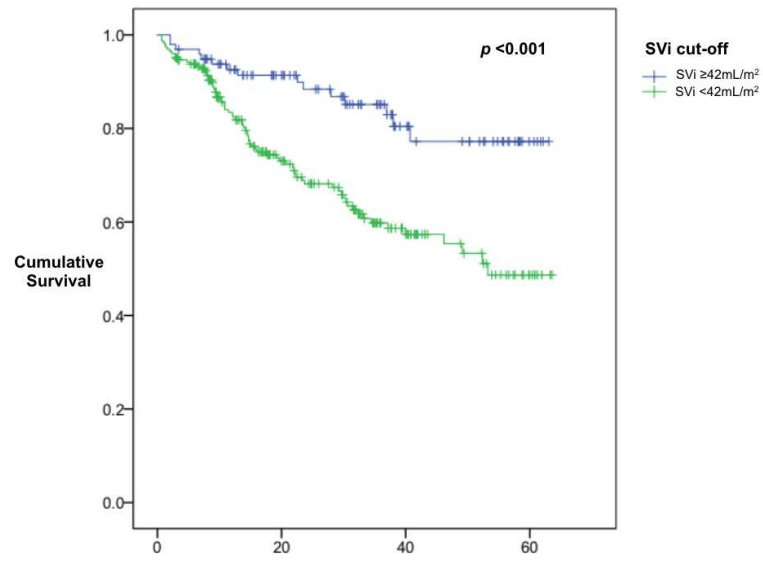
AL, light-chain amyloidosis; ATTR, transthyretin amyloidosis; LGE, late gadolinium enhancement; RV, right ventricular; TAPSE, tricuspid annular plane systolic excursion.

TAPSE data are presented as median (Q1-Q3) and proportions as n (%).





Number at risk		Follow-up (months)			
		0	20	40	60
TAPSE $\geq 16$ mm	140	140	98	50	9
TAPSE $< 16$ mm	182	182	78	21	3



Number at risk		Follow-up (months)			
		0	20	40	60
SVI $\geq 42$ mL/m <sup>2</sup>	97	97	67	28	5
SVI $< 42$ mL/m <sup>2</sup>	225	225	109	43	7

**Supplementary Table 1. Correlational analyses for all parameters analyzed in the multivariable Cox regression analyses of risk of death**

		E/e'	LV LGS	LV mass indexed	LA area indexed	LVEF	RVEF	SV indexed	MAPSE	TAPSE	RA area indexed	MCF
E/e'	r		-0.419 <sup>‡</sup>	0.369 <sup>‡</sup>	0.249 <sup>‡</sup>	-0.247 <sup>‡</sup>	-0.266 <sup>‡</sup>	-0.213 <sup>‡</sup>	-0.431 <sup>‡</sup>	-0.324 <sup>‡</sup>	0.07	-0.380 <sup>‡</sup>
	P		4.2x10 <sup>-15</sup>	8.6x10 <sup>-12</sup>	6x10 <sup>-6</sup>	7x10 <sup>-6</sup>	1x10 <sup>-6</sup>	0.00012	5x10 <sup>-16</sup>	2.5x10 <sup>-9</sup>	0.207	1.7x10 <sup>-12</sup>
LV LGS	r	-0.419 <sup>‡</sup>		-0.566 <sup>‡</sup>	-0.394 <sup>‡</sup>	0.627 <sup>‡</sup>	0.610 <sup>‡</sup>	0.424 <sup>‡</sup>	0.601 <sup>‡</sup>	0.668 <sup>‡</sup>	-0.408 <sup>‡</sup>	0.603 <sup>‡</sup>
	P	4.2x10 <sup>-15</sup>		1x10 <sup>-28</sup>	2x10 <sup>-13</sup>	1.6x10 <sup>-36</sup>	3.3x10 <sup>-34</sup>	1.7x10 <sup>-15</sup>	5.8x10 <sup>-33</sup>	5.9x10 <sup>-43</sup>	2.5x10 <sup>-14</sup>	3.4x10 <sup>-33</sup>
LV mass indexed	r	0.369 <sup>‡</sup>	-0.566 <sup>‡</sup>		0.505 <sup>‡</sup>	-0.485 <sup>‡</sup>	-0.429 <sup>‡</sup>	-0.079	-0.461 <sup>‡</sup>	-0.524 <sup>‡</sup>	0.433 <sup>‡</sup>	-0.773 <sup>‡</sup>
	P	8.6x10 <sup>-12</sup>	1.0x10 <sup>-28</sup>		3.3x10 <sup>-22</sup>	1.9x10 <sup>-20</sup>	8.0x10 <sup>-16</sup>	0.156	2.3x10 <sup>-18</sup>	4.1x10 <sup>-24</sup>	3.8x10 <sup>-16</sup>	3.3x10 <sup>-65</sup>
LA area indexed	r	0.249 <sup>‡</sup>	-0.394 <sup>‡</sup>	0.505 <sup>‡</sup>		-0.395 <sup>‡</sup>	-0.432 <sup>‡</sup>	-0.034	-0.304 <sup>‡</sup>	-0.363 <sup>‡</sup>	0.610 <sup>‡</sup>	-0.381 <sup>‡</sup>
	P	6x10 <sup>-6</sup>	2x10 <sup>-13</sup>	3.3x10 <sup>-22</sup>		2.0x10 <sup>-13</sup>	4.7x10 <sup>-16</sup>	0.549	2.5x10 <sup>-8</sup>	1.8x10 <sup>-11</sup>	3.1x10 <sup>-34</sup>	1.5x10 <sup>-12</sup>
LVEF	r	-0.247 <sup>‡</sup>	0.627 <sup>‡</sup>	-0.485 <sup>‡</sup>	-0.395 <sup>‡</sup>		0.822 <sup>‡</sup>	0.599 <sup>‡</sup>	0.530 <sup>‡</sup>	0.569 <sup>‡</sup>	-0.405 <sup>‡</sup>	0.591 <sup>‡</sup>
	P	7x10 <sup>-6</sup>	1.6x10 <sup>-36</sup>	1.9x10 <sup>-20</sup>	2.0x10 <sup>-13</sup>		2.6x10 <sup>-80</sup>	9.3x10 <sup>-33</sup>	1.1x10 <sup>-24</sup>	4.8x10 <sup>-29</sup>	4.0x10 <sup>-14</sup>	1.2x10 <sup>-31</sup>
RVEF	r	-0.266 <sup>‡</sup>	0.610 <sup>‡</sup>	-0.429 <sup>‡</sup>	-0.432 <sup>‡</sup>	0.822 <sup>‡</sup>		0.590 <sup>‡</sup>	0.479 <sup>‡</sup>	0.627 <sup>‡</sup>	-0.427 <sup>‡</sup>	0.550 <sup>‡</sup>
	P	1x10 <sup>-6</sup>	3.3x10 <sup>-34</sup>	8.0x10 <sup>-16</sup>	4.7x10 <sup>-16</sup>	2.6x10 <sup>-80</sup>		1.3x10 <sup>-31</sup>	7.0x10 <sup>-20</sup>	1.6x10 <sup>-36</sup>	1.0x10 <sup>-15</sup>	7.2x10 <sup>-27</sup>
SV indexed	r	-0.213 <sup>‡</sup>	0.424 <sup>‡</sup>	-0.079	-0.034	0.599 <sup>‡</sup>	0.590 <sup>‡</sup>		0.452 <sup>‡</sup>	0.514 <sup>‡</sup>	-0.087	0.493 <sup>‡</sup>
	P	0.00012	1.7x10 <sup>-15</sup>	0.156	0.549	9.3x10 <sup>-33</sup>	1.3x10 <sup>-31</sup>		1.3x10 <sup>-17</sup>	4.1x10 <sup>-23</sup>	0.118	3.7x10 <sup>-21</sup>
MAPSE	r	-0.431 <sup>‡</sup>	0.601 <sup>‡</sup>	-0.461 <sup>‡</sup>	-0.304 <sup>‡</sup>	0.530 <sup>‡</sup>	0.479 <sup>‡</sup>	0.452 <sup>‡</sup>		0.642 <sup>‡</sup>	-0.248 <sup>‡</sup>	0.590 <sup>‡</sup>
	P	5x10 <sup>-16</sup>	5.8x10 <sup>-33</sup>	2.3x10 <sup>-18</sup>	2.5x10 <sup>-8</sup>	1.1x10 <sup>-24</sup>	7.0x10 <sup>-20</sup>	1.3x10 <sup>-17</sup>		7.3x10 <sup>-39</sup>	7x10 <sup>-6</sup>	1.5x10 <sup>-31</sup>
TAPSE	r	-0.324 <sup>‡</sup>	0.668 <sup>‡</sup>	-0.524 <sup>‡</sup>	-0.363 <sup>‡</sup>	0.569 <sup>‡</sup>	0.627 <sup>‡</sup>	0.514 <sup>‡</sup>	0.642 <sup>‡</sup>		-0.373 <sup>‡</sup>	0.643 <sup>‡</sup>
	P	2.5x10 <sup>-9</sup>	5.9x10 <sup>-43</sup>	4.1x10 <sup>-24</sup>	1.8x10 <sup>-11</sup>	4.8x10 <sup>-29</sup>	1.6x10 <sup>-36</sup>	4.1x10 <sup>-23</sup>	7.3x10 <sup>-39</sup>		4.6x10 <sup>-12</sup>	5.2x10 <sup>-39</sup>
RA area indexed	r	0.07	-0.408 <sup>‡</sup>	0.433 <sup>‡</sup>	0.610 <sup>‡</sup>	-0.405 <sup>‡</sup>	-0.427 <sup>‡</sup>	-0.087	-0.248 <sup>‡</sup>	-0.373 <sup>‡</sup>		-0.343 <sup>‡</sup>
	P	0.207	2.5x10 <sup>-14</sup>	3.8x10 <sup>-16</sup>	3.1x10 <sup>-34</sup>	4.0x10 <sup>-14</sup>	1.0x10 <sup>-15</sup>	0.118	7x10 <sup>-6</sup>	4.6x10 <sup>-12</sup>		2.7x10 <sup>-10</sup>
MCF	r	-0.380 <sup>‡</sup>	0.603 <sup>‡</sup>	-0.773 <sup>‡</sup>	-0.381 <sup>‡</sup>	0.591 <sup>‡</sup>	0.550 <sup>‡</sup>	0.493 <sup>‡</sup>	0.590 <sup>‡</sup>	0.643 <sup>‡</sup>	-0.343 <sup>‡</sup>	
	P	1.7x10 <sup>-12</sup>	3.4x10 <sup>-33</sup>	3.3x10 <sup>-65</sup>	1.5x10 <sup>-12</sup>	1.2x10 <sup>-31</sup>	7.2x10 <sup>-27</sup>	3.7x10 <sup>-21</sup>	1.5x10 <sup>-31</sup>	5.2x10 <sup>-39</sup>	2.7x10 <sup>-10</sup>	

\*P<0.05, †P<0.01, ‡P<0.001

LV, left ventricular; LGS, longitudinal global strain; SV, stroke volume; LVEF, left ventricular ejection fraction; RVEF, right ventricular ejection fraction; MAPSE, mitral annular plane systolic excursion; TAPSE, tricuspid annular plane systolic excursion; LA, left atrial; RA, right atrial; MCF, myocardial contraction fraction.

**Supplementary Table 2. Multivariable Cox regression analysis of risk of death in the AL amyloidosis population**

Variables	Model A		Model B		Model C	
	HR (95% CI)	P	HR (95% CI)	P	HR (95% CI)	P
E/e' each 1 unit increment	1.02 (0.97-1.08)	0.44	1.03 (0.98-1.10)	0.25	1.02 (0.96-1.07)	0.58
LV LGS, each 2% decrement	0.92 (0.74-1.15)	0.47	0.93 (0.75-1.16)	0.54	0.97 (0.78-1.20)	0.76
LV mass indexed, each 10g/m <sup>2</sup> increment <sup>(23)</sup>	0.98 (0.86-1.12)	0.78	0.94 (0.82-1.08)	0.38		
LA area indexed, each 1.8cm <sup>2</sup> /m <sup>2</sup> increment <sup>(23)</sup>	1.53 (1.12-2.09)	0.0072 <sup>†</sup>	1.32 (1.01-1.73)	0.039*	1.28 (1.01-1.63)	0.044*
RA area indexed, each 1.8cm <sup>2</sup> /m <sup>2</sup> increment <sup>(23)</sup>	0.94 (0.73-1.21)	0.63	0.90 (0.70-1.16)	0.41	0.89 (0.70-1.14)	0.36
LVEF, each 3% decrement			1.03 (0.91-1.17)	0.64		
RVEF, each 3% decrement	0.95 (0.84-1.08)	0.44	0.99 (0.85-1.16)	0.92	1.02 (0.91-1.14)	0.75
SV indexed, each 5mL/m <sup>2</sup> decrement	1.37 (1.03-1.83)	0.030*				
MAPSE, each 2.2mm decrement	0.85 (0.64-1.13)	0.25	0.88 (0.67-1.18)	0.40	0.90 (0.68-1.19)	0.47
TAPSE, each 3.6mm decrement	1.54 (1.08-2.18)	0.017*	1.69 (1.18-2.42)	0.0039 <sup>†</sup>	1.62 (1.13-2.30)	0.0082 <sup>†</sup>
MCF, each 10% decrement <sup>(21)</sup>					1.13 (0.83-1.54)	0.43
C-statistic	0.797 (0.699, 0.895)		0.785 (0.687, 0.883)		0.785 (0.687, 0.883)	

\* $P < 0.05$ , <sup>†</sup> $P < 0.01$ , <sup>‡</sup> $P < 0.001$

LV, left ventricular; LGS, longitudinal global strain; SV, stroke volume; LVEF, left ventricular ejection fraction; RVEF, right ventricular ejection fraction; MAPSE, mitral annular plane systolic excursion; TAPSE, tricuspid annular plane systolic excursion; LA, left atrial; RA, right atrial; MCF, myocardial contraction fraction.



**Supplementary Table 3. Multivariable Cox regression analysis of risk of death in the TTR amyloidosis population**

Variables	Model A		Model B		Model C	
	HR (95% CI)	P	HR (95% CI)	P	HR (95% CI)	P
E/e' each 1 unit increment	1.01 (0.97-1.06)	0.54	1.02 (0.97-1.07)	0.53	1.00 (0.95-1.05)	0.91
LV LGS, each 2% decrement	1.16 (0.96-1.41)	0.13	1.16 (0.96-1.41)	0.13	1.21 (1.01-1.45)	0.043*
LV mass indexed, each 10g/m <sup>2</sup> increment <sup>(23)</sup>	0.98 (0.89-1.08)	0.70	0.96 (0.87-1.05)	0.35		
LA area indexed, each 1.8cm <sup>2</sup> /m <sup>2</sup> increment <sup>(23)</sup>	0.99 (0.79-1.23)	0.90	0.96 (0.78-1.19)	0.72	0.93 (0.75-1.14)	0.47
RA area indexed, each 1.8cm <sup>2</sup> /m <sup>2</sup> increment <sup>(23)</sup>	1.10 (0.95-1.28)	0.19	1.10 (0.94-1.28)	0.24	1.10 (0.95-1.28)	0.20
LVEF, each 3% decrement			1.05 (0.93-1.18)	0.41		
RVEF, each 3% decrement	1.01 (0.91-1.12)	0.85	1.01 (0.88-1.15)	0.92	1.03 (0.94-1.12)	0.52
SV indexed, each 5mL/m <sup>2</sup> decrement	1.18 (0.92-1.51)	0.18				
MAPSE, each 2.2mm decrement	1.05 (0.76-1.45)	0.78	1.09 (0.80-1.49)	0.59	0.99 (0.71-1.38)	0.96
TAPSE, each 3.6mm decrement	1.45 (1.02-2.06)	0.039*	1.53 (1.08-2.16)	0.017*	1.42 (1.00-2.02)	0.053
MCF, each 10% decrement <sup>(21)</sup>					1.38 (0.94-2.03)	0.10
C-statistic	0.728 (0.644, 0.812)		0.729 (0.645, 0.813)		0.725 (0.641, 0.809)	

\* $P < 0.05$ , † $P < 0.01$ , ‡ $P < 0.001$

LV, left ventricular; LGS, longitudinal global strain; SV, stroke volume; LVEF, left ventricular ejection fraction; RVEF, right ventricular ejection fraction; MAPSE, mitral annular plane systolic excursion; TAPSE, tricuspid annular plane systolic excursion; LA, left atrial; RA, right atrial; MCF, myocardial contraction fraction.



AMERICAN COLLEGE OF CARDIOLOGY FOUNDATION  
AUTHOR RESPONSIBILITIES: RELATIONSHIP WITH INDUSTRY AND FINANCIAL DISCLOSURE

In addition to disclosing relationship with industry and/or financial disclosures on the *cover letter* and *title* page of your manuscript, we ask that each author sign this form.

**To be published in the following journal (please check):**

*Journal of the American College of Cardiology(JACC)*  *JACC: Cardiovascular Interventions*  *JACC: Cardiovascular Imaging*  *JACC: Heart Failure*  *JACC: Clinical Electrophysiology*  *JACC: Basic Translational Science*

Article entitled: Cardiac structural and functional consequences of amyloid deposition by CMR and echocardiography and their prognostic roles

Manuscript number: JIMG040917-0441

Corresponding Author: Dr. Knight

Corresponding author's printed name: DANIEL KNIGHT

First author's printed name: DANIEL KNIGHT

**\*Corresponding Author's Responsibility**

To avoid delay in the publication of your manuscript, **complete and submit this form as quickly as possible.**

After you have submitted your electronic form, you will receive an email confirmation that includes a PDF copy. Please print and retain for your files. **If for some reason you are unable to complete this form electronically**, please contact the JACC office directly or print this form, fill in the spaces manually, and email, fax, or post mail a copy to:

*Journal of the American College of Cardiology(JACC)*

*JACC: Cardiovascular Interventions*

*JACC: Cardiovascular Imaging*

*JACC: Heart Failure*

*JACC: Clinical Electrophysiology*

*JACC: Basic Translational Science*

Heart House, 2400 N Street NW, Washington, DC, 20037

Fax: (202) 375-6819

Email: [jaccsd@acc.org](mailto:jaccsd@acc.org) [jaccint@acc.org](mailto:jaccint@acc.org) [jaccimg@acc.org](mailto:jaccimg@acc.org) [jacchf@acc.org](mailto:jacchf@acc.org) [jacccep@acc.org](mailto:jacccep@acc.org) [jaccbtr@acc.org](mailto:jaccbtr@acc.org)

Complete the section below, type your name into the Type Name box and input the date. *By submitting this form, you attest to being an author on the paper.*

Type Name: Daniel Knight Date: 06/06/17

Title and Company (if employer representative):

I have **no relationship with industry** to disclose.

I have **no financial information** to disclose.

local\_p\_id: 433898

time: 1496731059

ip address: 195.195.100.85



AMERICAN COLLEGE OF CARDIOLOGY FOUNDATION  
AUTHOR RESPONSIBILITIES: RELATIONSHIP WITH INDUSTRY AND FINANCIAL DISCLOSURE

In addition to disclosing relationship with industry and/or financial disclosures on the *cover letter* and *title* page of your manuscript, we ask that each author sign this form.

**To be published in the following journal (please check):**

*Journal of the American College of Cardiology(JACC)*  *JACC: Cardiovascular Interventions*  *JACC: Cardiovascular Imaging*  *JACC: Heart Failure*  *JACC: Clinical Electrophysiology*  *JACC: Basic Translational Science*

Article entitled: Cardiac structural and functional consequences of amyloid deposition by CMR and echocardiography and their prognostic roles

Manuscript number: JIMG040917-0441

Corresponding Author: Dr. Knight

Corresponding author's printed name: Daniel Knight

First author's printed name: Daniel Knight

**\*Corresponding Author's Responsibility**

To avoid delay in the publication of your manuscript, **complete and submit this form as quickly as possible.**

After you have submitted your electronic form, you will receive an email confirmation that includes a PDF copy. Please print and retain for your files. **If for some reason you are unable to complete this form electronically**, please contact the JACC office directly or print this form, fill in the spaces manually, and email, fax, or post mail a copy to:

*Journal of the American College of Cardiology(JACC)*

*JACC: Cardiovascular Interventions*

*JACC: Cardiovascular Imaging*

*JACC: Heart Failure*

*JACC: Clinical Electrophysiology*

*JACC: Basic Translational Science*

Heart House, 2400 N Street NW, Washington, DC, 20037

Fax: (202) 375-6819

Email: [jaccsd@acc.org](mailto:jaccsd@acc.org) [jaccint@acc.org](mailto:jaccint@acc.org) [jaccimg@acc.org](mailto:jaccimg@acc.org) [jacchf@acc.org](mailto:jacchf@acc.org) [jacccep@acc.org](mailto:jacccep@acc.org) [jaccbtr@acc.org](mailto:jaccbtr@acc.org)

Complete the section below, type your name into the Type Name box and input the date. *By submitting this form, you attest to being an author on the paper.*

Type Name: Giulia Zumbo Date: 27.05.2017

Title and Company (if employer representative):

I have **no relationship with industry** to disclose.

I have **no financial information** to disclose.

local\_p\_id: 433897

time: 1495852883

ip address: 123.231.126.64



AMERICAN COLLEGE OF CARDIOLOGY FOUNDATION  
AUTHOR RESPONSIBILITIES: RELATIONSHIP WITH INDUSTRY AND FINANCIAL DISCLOSURE

In addition to disclosing relationship with industry and/or financial disclosures on the *cover letter* and *title* page of your manuscript, we ask that each author sign this form.

**To be published in the following journal (please check):**

*Journal of the American College of Cardiology(JACC)*  *JACC: Cardiovascular Interventions*  *JACC: Cardiovascular Imaging*  *JACC: Heart Failure*  *JACC: Clinical Electrophysiology*  *JACC: Basic Translational Science*

Article entitled: Cardiac structural and functional consequences of amyloid deposition by CMR and echocardiography and their prognostic roles

Manuscript number: JIMG040917-0441

Corresponding Author: Dr. Knight

Corresponding author's printed name: Daniel Knight

First author's printed name: Daniel Knight

**\*Corresponding Author's Responsibility**

To avoid delay in the publication of your manuscript, **complete and submit this form as quickly as possible.**

After you have submitted your electronic form, you will receive an email confirmation that includes a PDF copy. Please print and retain for your files. **If for some reason you are unable to complete this form electronically**, please contact the JACC office directly or print this form, fill in the spaces manually, and email, fax, or post mail a copy to:

*Journal of the American College of Cardiology(JACC)*

*JACC: Cardiovascular Interventions*

*JACC: Cardiovascular Imaging*

*JACC: Heart Failure*

*JACC: Clinical Electrophysiology*

*JACC: Basic Translational Science*

Heart House, 2400 N Street NW, Washington, DC, 20037

Fax: (202) 375-6819

Email: [jaccsd@acc.org](mailto:jaccsd@acc.org) [jaccint@acc.org](mailto:jaccint@acc.org) [jaccimg@acc.org](mailto:jaccimg@acc.org) [jacchf@acc.org](mailto:jacchf@acc.org) [jacccep@acc.org](mailto:jacccep@acc.org) [jaccbtr@acc.org](mailto:jaccbtr@acc.org)

Complete the section below, type your name into the Type Name box and input the date. *By submitting this form, you attest to being an author on the paper.*

Type Name: Jennifer Steeden Date: 26-05-17

Title and Company (if employer representative): University College London

I have **no relationship with industry** to disclose.

I have **no financial information** to disclose.

local\_p\_id: 446782

time: 1495827232

ip address: 79.69.93.60



AMERICAN COLLEGE OF CARDIOLOGY FOUNDATION  
AUTHOR RESPONSIBILITIES: RELATIONSHIP WITH INDUSTRY AND FINANCIAL DISCLOSURE

In addition to disclosing relationship with industry and/or financial disclosures on the *cover letter* and *title* page of your manuscript, we ask that each author sign this form.

**To be published in the following journal (please check):**

*Journal of the American College of Cardiology(JACC)*  *JACC: Cardiovascular Interventions*  *JACC: Cardiovascular Imaging*  *JACC: Heart Failure*  *JACC: Clinical Electrophysiology*  *JACC: Basic Translational Science*

Article entitled: Cardiac structural and functional consequences of amyloid deposition by CMR and echocardiography and their prognostic roles

Manuscript number: JIMG040917-0441R

Corresponding Author: Dr. Knight

Corresponding author's printed name: Daniel Knight

First author's printed name: Daniel Knight

**\*Corresponding Author's Responsibility**

To avoid delay in the publication of your manuscript, **complete and submit this form as quickly as possible.**

After you have submitted your electronic form, you will receive an email confirmation that includes a PDF copy. Please print and retain for your files. **If for some reason you are unable to complete this form electronically**, please contact the JACC office directly or print this form, fill in the spaces manually, and email, fax, or post mail a copy to:

*Journal of the American College of Cardiology(JACC)*

*JACC: Cardiovascular Interventions*

*JACC: Cardiovascular Imaging*

*JACC: Heart Failure*

*JACC: Clinical Electrophysiology*

*JACC: Basic Translational Science*

Heart House, 2400 N Street NW, Washington, DC, 20037

Fax: (202) 375-6819

Email: [jaccsd@acc.org](mailto:jaccsd@acc.org) [jaccint@acc.org](mailto:jaccint@acc.org) [jaccimg@acc.org](mailto:jaccimg@acc.org) [jacchf@acc.org](mailto:jacchf@acc.org) [jacccep@acc.org](mailto:jacccep@acc.org) [jaccbtr@acc.org](mailto:jaccbtr@acc.org)

Complete the section below, type your name into the Type Name box and input the date. *By submitting this form, you attest to being an author on the paper.*

Type Name: vivek muthurangu Date: 4/12/2017

Title and Company (if employer representative):

I have **no relationship with industry** to disclose.

I have **no financial information** to disclose.

local\_p\_id: 222024

time: 1512410369

ip address: 194.82.242.48



AMERICAN COLLEGE OF CARDIOLOGY FOUNDATION  
AUTHOR RESPONSIBILITIES: RELATIONSHIP WITH INDUSTRY AND FINANCIAL DISCLOSURE

In addition to disclosing relationship with industry and/or financial disclosures on the *cover letter* and *title* page of your manuscript, we ask that each author sign this form.

**To be published in the following journal (please check):**

*Journal of the American College of Cardiology(JACC)*  *JACC: Cardiovascular Interventions*  *JACC: Cardiovascular Imaging*  *JACC: Heart Failure*  *JACC: Clinical Electrophysiology*  *JACC: Basic Translational Science*

Article entitled: Cardiac structural and functional consequences of amyloid deposition by CMR and echocardiography and their prognostic roles

Manuscript number: JIMG040917-0441

Corresponding Author: Dr. Knight

Corresponding author's printed name: Daniel Knight

First author's printed name: Daniel Knight

**\*Corresponding Author's Responsibility**

To avoid delay in the publication of your manuscript, **complete and submit this form as quickly as possible.**

After you have submitted your electronic form, you will receive an email confirmation that includes a PDF copy. Please print and retain for your files. **If for some reason you are unable to complete this form electronically**, please contact the JACC office directly or print this form, fill in the spaces manually, and email, fax, or post mail a copy to:

*Journal of the American College of Cardiology(JACC)*

*JACC: Cardiovascular Interventions*

*JACC: Cardiovascular Imaging*

*JACC: Heart Failure*

*JACC: Clinical Electrophysiology*

*JACC: Basic Translational Science*

Heart House, 2400 N Street NW, Washington, DC, 20037

Fax: (202) 375-6819

Email: [jaccsd@acc.org](mailto:jaccsd@acc.org) [jaccint@acc.org](mailto:jaccint@acc.org) [jaccimg@acc.org](mailto:jaccimg@acc.org) [jacchf@acc.org](mailto:jacchf@acc.org) [jacccep@acc.org](mailto:jacccep@acc.org) [jaccbtr@acc.org](mailto:jaccbtr@acc.org)

Complete the section below, type your name into the Type Name box and input the date. *By submitting this form, you attest to being an author on the paper.*

Type Name: Ana Martinez-Naharro Date: 26/05/2017

Title and Company (if employer representative):

I have **no relationship with industry** to disclose.

I have **no financial information** to disclose.

local\_p\_id: 446783

time: 1495827204

ip address: 62.168.35.125



AMERICAN COLLEGE OF CARDIOLOGY FOUNDATION  
AUTHOR RESPONSIBILITIES: RELATIONSHIP WITH INDUSTRY AND FINANCIAL DISCLOSURE

In addition to disclosing relationship with industry and/or financial disclosures on the *cover letter* and *title* page of your manuscript, we ask that each author sign this form.

**To be published in the following journal (please check):**

*Journal of the American College of Cardiology(JACC)*  *JACC: Cardiovascular Interventions*  *JACC: Cardiovascular Imaging*  *JACC: Heart Failure*  *JACC: Clinical Electrophysiology*  *JACC: Basic Translational Science*

Article entitled: Cardiac structural and functional consequences of amyloid deposition by CMR and echocardiography and their prognostic roles

Manuscript number: JIMG040917-0441

Corresponding Author: Dr. Knight

Corresponding author's printed name: Daniel Knight

First author's printed name: Daniel Knight

**\*Corresponding Author's Responsibility**

To avoid delay in the publication of your manuscript, **complete and submit this form as quickly as possible.**

After you have submitted your electronic form, you will receive an email confirmation that includes a PDF copy. Please print and retain for your files. **If for some reason you are unable to complete this form electronically**, please contact the JACC office directly or print this form, fill in the spaces manually, and email, fax, or post mail a copy to:

*Journal of the American College of Cardiology(JACC)*

*JACC: Cardiovascular Interventions*

*JACC: Cardiovascular Imaging*

*JACC: Heart Failure*

*JACC: Clinical Electrophysiology*

*JACC: Basic Translational Science*

Heart House, 2400 N Street NW, Washington, DC, 20037

Fax: (202) 375-6819

Email: [jaccsd@acc.org](mailto:jaccsd@acc.org) [jaccint@acc.org](mailto:jaccint@acc.org) [jaccimg@acc.org](mailto:jaccimg@acc.org) [jacchf@acc.org](mailto:jacchf@acc.org) [jacccep@acc.org](mailto:jacccep@acc.org) [jaccbtr@acc.org](mailto:jaccbtr@acc.org)

Complete the section below, type your name into the Type Name box and input the date. *By submitting this form, you attest to being an author on the paper.*

Type Name: Thomas Treibel Date: 29th May 2017

Title and Company (if employer representative):

I have **no relationship with industry** to disclose.

I have **no financial information** to disclose.

local\_p\_id: 442575

time: 1496090420

ip address: 86.180.221.92



AMERICAN COLLEGE OF CARDIOLOGY FOUNDATION  
AUTHOR RESPONSIBILITIES: RELATIONSHIP WITH INDUSTRY AND FINANCIAL DISCLOSURE

In addition to disclosing relationship with industry and/or financial disclosures on the *cover letter* and *title* page of your manuscript, we ask that each author sign this form.

**To be published in the following journal (please check):**

*Journal of the American College of Cardiology(JACC)*  *JACC: Cardiovascular Interventions*  *JACC: Cardiovascular Imaging*  *JACC: Heart Failure*  *JACC: Clinical Electrophysiology*  *JACC: Basic Translational Science*

Article entitled: Cardiac structural and functional consequences of amyloid deposition by CMR and echocardiography and their prognostic roles

Manuscript number: JIMG040917-0441

Corresponding Author: Dr. Knight

Corresponding author's printed name: Dr Knight

First author's printed name: Daniel Knight

**\*Corresponding Author's Responsibility**

To avoid delay in the publication of your manuscript, **complete and submit this form as quickly as possible.**

After you have submitted your electronic form, you will receive an email confirmation that includes a PDF copy. Please print and retain for your files. **If for some reason you are unable to complete this form electronically**, please contact the JACC office directly or print this form, fill in the spaces manually, and email, fax, or post mail a copy to:

*Journal of the American College of Cardiology(JACC)*

*JACC: Cardiovascular Interventions*

*JACC: Cardiovascular Imaging*

*JACC: Heart Failure*

*JACC: Clinical Electrophysiology*

*JACC: Basic Translational Science*

Heart House, 2400 N Street NW, Washington, DC, 20037

Fax: (202) 375-6819

Email: [jaccsd@acc.org](mailto:jaccsd@acc.org) [jaccint@acc.org](mailto:jaccint@acc.org) [jaccimg@acc.org](mailto:jaccimg@acc.org) [jacchf@acc.org](mailto:jacchf@acc.org) [jacccep@acc.org](mailto:jacccep@acc.org) [jaccbtr@acc.org](mailto:jaccbtr@acc.org)

Complete the section below, type your name into the Type Name box and input the date. *By submitting this form, you attest to being an author on the paper.*

Type Name: Amna Abdel-Gadir Date: 11/06/2017

Title and Company (if employer representative):

I have **no relationship with industry** to disclose.

I have **no financial information** to disclose.

local\_p\_id: 404283

time: 1497203965

ip address: 82.16.234.9





AMERICAN COLLEGE OF CARDIOLOGY FOUNDATION  
AUTHOR RESPONSIBILITIES: RELATIONSHIP WITH INDUSTRY AND FINANCIAL DISCLOSURE

In addition to disclosing relationship with industry and/or financial disclosures on the *cover letter* and *title* page of your manuscript, we ask that each author sign this form.

**To be published in the following journal (please check):**

*Journal of the American College of Cardiology(JACC)*  *JACC: Cardiovascular Interventions*  *JACC: Cardiovascular Imaging*  *JACC: Heart Failure*  *JACC: Clinical Electrophysiology*  *JACC: Basic Translational Science*

Article entitled: Cardiac structural and functional consequences of amyloid deposition by CMR and echocardiography and their prognostic roles

Manuscript number: JIMG040917-0441

Corresponding Author: Dr. Knight

Corresponding author's printed name: Dr Knight

First author's printed name: Dr Knight

**\*Corresponding Author's Responsibility**

To avoid delay in the publication of your manuscript, **complete and submit this form as quickly as possible.**

After you have submitted your electronic form, you will receive an email confirmation that includes a PDF copy. Please print and retain for your files. **If for some reason you are unable to complete this form electronically**, please contact the JACC office directly or print this form, fill in the spaces manually, and email, fax, or post mail a copy to:

*Journal of the American College of Cardiology(JACC)*

*JACC: Cardiovascular Interventions*

*JACC: Cardiovascular Imaging*

*JACC: Heart Failure*

*JACC: Clinical Electrophysiology*

*JACC: Basic Translational Science*

Heart House, 2400 N Street NW, Washington, DC, 20037

Fax: (202) 375-6819

Email: [jaccsd@acc.org](mailto:jaccsd@acc.org) [jaccint@acc.org](mailto:jaccint@acc.org) [jaccimg@acc.org](mailto:jaccimg@acc.org) [jacchf@acc.org](mailto:jacchf@acc.org) [jacccep@acc.org](mailto:jacccep@acc.org) [jaccbtr@acc.org](mailto:jaccbtr@acc.org)

Complete the section below, type your name into the Type Name box and input the date. *By submitting this form, you attest to being an author on the paper.*

Type Name: H Bulluck Date: 26/05/2017

Title and Company (if employer representative): The Hatter Cardiovascular Institute

I have **no relationship with industry** to disclose.

I have **no financial information** to disclose.

local\_p\_id: 401085

time: 1495832029

ip address: 86.153.143.120



AMERICAN COLLEGE OF CARDIOLOGY FOUNDATION  
AUTHOR RESPONSIBILITIES: RELATIONSHIP WITH INDUSTRY AND FINANCIAL DISCLOSURE

In addition to disclosing relationship with industry and/or financial disclosures on the *cover letter* and *title* page of your manuscript, we ask that each author sign this form.

**To be published in the following journal (please check):**

*Journal of the American College of Cardiology(JACC)*  *JACC: Cardiovascular Interventions*  *JACC: Cardiovascular Imaging*  *JACC: Heart Failure*  *JACC: Clinical Electrophysiology*  *JACC: Basic Translational Science*

Article entitled: Cardiac structural and functional consequences of amyloid deposition by CMR and echocardiography and their prognostic roles

Manuscript number: JIMG040917-0441

Corresponding Author: Dr. Knight

Corresponding author's printed name: Daniel Knight

First author's printed name: Daniel Knight

**\*Corresponding Author's Responsibility**

To avoid delay in the publication of your manuscript, **complete and submit this form as quickly as possible.**

After you have submitted your electronic form, you will receive an email confirmation that includes a PDF copy. Please print and retain for your files. **If for some reason you are unable to complete this form electronically**, please contact the JACC office directly or print this form, fill in the spaces manually, and email, fax, or post mail a copy to:

*Journal of the American College of Cardiology(JACC)*

*JACC: Cardiovascular Interventions*

*JACC: Cardiovascular Imaging*

*JACC: Heart Failure*

*JACC: Clinical Electrophysiology*

*JACC: Basic Translational Science*

Heart House, 2400 N Street NW, Washington, DC, 20037

Fax: (202) 375-6819

Email: [jaccsd@acc.org](mailto:jaccsd@acc.org) [jaccint@acc.org](mailto:jaccint@acc.org) [jaccimg@acc.org](mailto:jaccimg@acc.org) [jacchf@acc.org](mailto:jacchf@acc.org) [jacccep@acc.org](mailto:jacccep@acc.org) [jaccbtr@acc.org](mailto:jaccbtr@acc.org)

Complete the section below, type your name into the Type Name box and input the date. *By submitting this form, you attest to being an author on the paper.*

Type Name: Tushar Kotecha Date: 30/05/2017

Title and Company (if employer representative):

I have **no relationship with industry** to disclose.

I have **no financial information** to disclose.

local\_p\_id: 433470

time: 1496134658

ip address: 94.118.251.217



AMERICAN COLLEGE OF CARDIOLOGY FOUNDATION  
AUTHOR RESPONSIBILITIES: RELATIONSHIP WITH INDUSTRY AND FINANCIAL DISCLOSURE

In addition to disclosing relationship with industry and/or financial disclosures on the *cover letter* and *title* page of your manuscript, we ask that each author sign this form.

**To be published in the following journal (please check):**

*Journal of the American College of Cardiology(JACC)*  *JACC: Cardiovascular Interventions*  *JACC: Cardiovascular Imaging*  *JACC: Heart Failure*  *JACC: Clinical Electrophysiology*  *JACC: Basic Translational Science*

Article entitled: Cardiac structural and functional consequences of amyloid deposition by CMR and echocardiography and their prognostic roles

Manuscript number: JIMG040917-0441

Corresponding Author: Dr. Knight

Corresponding author's printed name: Daniel Knight

First author's printed name: Daniel Knight

**\*Corresponding Author's Responsibility**

To avoid delay in the publication of your manuscript, **complete and submit this form as quickly as possible.**

After you have submitted your electronic form, you will receive an email confirmation that includes a PDF copy. Please print and retain for your files. **If for some reason you are unable to complete this form electronically**, please contact the JACC office directly or print this form, fill in the spaces manually, and email, fax, or post mail a copy to:

*Journal of the American College of Cardiology(JACC)*

*JACC: Cardiovascular Interventions*

*JACC: Cardiovascular Imaging*

*JACC: Heart Failure*

*JACC: Clinical Electrophysiology*

*JACC: Basic Translational Science*

Heart House, 2400 N Street NW, Washington, DC, 20037

Fax: (202) 375-6819

Email: [jaccsd@acc.org](mailto:jaccsd@acc.org) [jaccint@acc.org](mailto:jaccint@acc.org) [jaccimg@acc.org](mailto:jaccimg@acc.org) [jacchf@acc.org](mailto:jacchf@acc.org) [jacccep@acc.org](mailto:jacccep@acc.org) [jaccbtr@acc.org](mailto:jaccbtr@acc.org)

Complete the section below, type your name into the Type Name box and input the date. *By submitting this form, you attest to being an author on the paper.*

Type Name: Rohin Francis Date: 6/6/2017

Title and Company (if employer representative): Dr

I have **no relationship with industry** to disclose.

I have **no financial information** to disclose.

local\_p\_id: 446785

time: 1496741100

ip address: 128.40.161.69



AMERICAN COLLEGE OF CARDIOLOGY FOUNDATION  
AUTHOR RESPONSIBILITIES: RELATIONSHIP WITH INDUSTRY AND FINANCIAL DISCLOSURE

In addition to disclosing relationship with industry and/or financial disclosures on the *cover letter* and *title* page of your manuscript, we ask that each author sign this form.

**To be published in the following journal (please check):**

*Journal of the American College of Cardiology(JACC)*  *JACC: Cardiovascular Interventions*  *JACC: Cardiovascular Imaging*  *JACC: Heart Failure*  *JACC: Clinical Electrophysiology*  *JACC: Basic Translational Science*

Article entitled: Cardiac structural and functional consequences of amyloid deposition by CMR and echocardiography and their prognostic roles

Manuscript number: JIMG040917-0441

Corresponding Author: Dr. Knight

Corresponding author's printed name: DANIEL KNIGHT

First author's printed name: DANIEL KNIGHT

**\*Corresponding Author's Responsibility**

To avoid delay in the publication of your manuscript, **complete and submit this form as quickly as possible.**

After you have submitted your electronic form, you will receive an email confirmation that includes a PDF copy. Please print and retain for your files. **If for some reason you are unable to complete this form electronically**, please contact the JACC office directly or print this form, fill in the spaces manually, and email, fax, or post mail a copy to:

*Journal of the American College of Cardiology(JACC)*

*JACC: Cardiovascular Interventions*

*JACC: Cardiovascular Imaging*

*JACC: Heart Failure*

*JACC: Clinical Electrophysiology*

*JACC: Basic Translational Science*

Heart House, 2400 N Street NW, Washington, DC, 20037

Fax: (202) 375-6819

Email: [jaccsd@acc.org](mailto:jaccsd@acc.org) [jaccint@acc.org](mailto:jaccint@acc.org) [jaccimg@acc.org](mailto:jaccimg@acc.org) [jacchf@acc.org](mailto:jacchf@acc.org) [jacccep@acc.org](mailto:jacccep@acc.org) [jaccbtr@acc.org](mailto:jaccbtr@acc.org)

Complete the section below, type your name into the Type Name box and input the date. *By submitting this form, you attest to being an author on the paper.*

Type Name: Tamer Rezk Date: 6//2017

Title and Company (if employer representative): N/A

I have **no relationship with industry** to disclose.

I have **no financial information** to disclose.

local\_p\_id: 442578

time: 1496733276

ip address: 82.8.237.185



AMERICAN COLLEGE OF CARDIOLOGY FOUNDATION  
AUTHOR RESPONSIBILITIES: RELATIONSHIP WITH INDUSTRY AND FINANCIAL DISCLOSURE

In addition to disclosing relationship with industry and/or financial disclosures on the *cover letter* and *title* page of your manuscript, we ask that each author sign this form.

**To be published in the following journal (please check):**

*Journal of the American College of Cardiology(JACC)*  *JACC: Cardiovascular Interventions*  *JACC: Cardiovascular Imaging*  *JACC: Heart Failure*  *JACC: Clinical Electrophysiology*  *JACC: Basic Translational Science*

Article entitled: Cardiac structural and functional consequences of amyloid deposition by CMR and echocardiography and their prognostic roles

Manuscript number: JIMG040917-0441

Corresponding Author: Dr. Knight

Corresponding author's printed name: DANIEL KNIGHT

First author's printed name: DANIEL KNIGHT

**\*Corresponding Author's Responsibility**

To avoid delay in the publication of your manuscript, **complete and submit this form as quickly as possible.**

After you have submitted your electronic form, you will receive an email confirmation that includes a PDF copy. Please print and retain for your files. **If for some reason you are unable to complete this form electronically**, please contact the JACC office directly or print this form, fill in the spaces manually, and email, fax, or post mail a copy to:

*Journal of the American College of Cardiology(JACC)*

*JACC: Cardiovascular Interventions*

*JACC: Cardiovascular Imaging*

*JACC: Heart Failure*

*JACC: Clinical Electrophysiology*

*JACC: Basic Translational Science*

Heart House, 2400 N Street NW, Washington, DC, 20037

Fax: (202) 375-6819

Email: [jaccsd@acc.org](mailto:jaccsd@acc.org) [jaccint@acc.org](mailto:jaccint@acc.org) [jaccimg@acc.org](mailto:jaccimg@acc.org) [jacchf@acc.org](mailto:jacchf@acc.org) [jacccep@acc.org](mailto:jacccep@acc.org) [jaccbtr@acc.org](mailto:jaccbtr@acc.org)

Complete the section below, type your name into the Type Name box and input the date. *By submitting this form, you attest to being an author on the paper.*

Type Name: CANDIDA CRISTINA QUARTA Date: 06/06/2017

Title and Company (if employer representative):

I have **no relationship with industry** to disclose.

I have **no financial information** to disclose.

local\_p\_id: 442579

time: 1496731062

ip address: 86.137.177.160



AMERICAN COLLEGE OF CARDIOLOGY FOUNDATION  
AUTHOR RESPONSIBILITIES: RELATIONSHIP WITH INDUSTRY AND FINANCIAL DISCLOSURE

In addition to disclosing relationship with industry and/or financial disclosures on the *cover letter* and *title* page of your manuscript, we ask that each author sign this form.

**To be published in the following journal (please check):**

*Journal of the American College of Cardiology(JACC)*  *JACC: Cardiovascular Interventions*  *JACC: Cardiovascular Imaging*  *JACC: Heart Failure*  *JACC: Clinical Electrophysiology*  *JACC: Basic Translational Science*

Article entitled: Cardiac structural and functional consequences of amyloid deposition by CMR and echocardiography and their prognostic roles

Manuscript number: JIMG040917-0441

Corresponding Author: Dr. Knight

Corresponding author's printed name: Daniel Knight

First author's printed name: Daniel Knight

**\*Corresponding Author's Responsibility**

To avoid delay in the publication of your manuscript, **complete and submit this form as quickly as possible.**

After you have submitted your electronic form, you will receive an email confirmation that includes a PDF copy. Please print and retain for your files. **If for some reason you are unable to complete this form electronically**, please contact the JACC office directly or print this form, fill in the spaces manually, and email, fax, or post mail a copy to:

*Journal of the American College of Cardiology(JACC)*

*JACC: Cardiovascular Interventions*

*JACC: Cardiovascular Imaging*

*JACC: Heart Failure*

*JACC: Clinical Electrophysiology*

*JACC: Basic Translational Science*

Heart House, 2400 N Street NW, Washington, DC, 20037

Fax: (202) 375-6819

Email: [jaccsd@acc.org](mailto:jaccsd@acc.org) [jaccint@acc.org](mailto:jaccint@acc.org) [jaccimg@acc.org](mailto:jaccimg@acc.org) [jacchf@acc.org](mailto:jacchf@acc.org) [jacccep@acc.org](mailto:jacccep@acc.org) [jaccbtr@acc.org](mailto:jaccbtr@acc.org)

Complete the section below, type your name into the Type Name box and input the date. *By submitting this form, you attest to being an author on the paper.*

Type Name: Carol Whelan Date: 04.06.17

Title and Company (if employer representative):

I have **no relationship with industry** to disclose.

I have **no financial information** to disclose.

local\_p\_id: 314799

time: 1496664215

ip address: 195.195.100.194



AMERICAN COLLEGE OF CARDIOLOGY FOUNDATION  
AUTHOR RESPONSIBILITIES: RELATIONSHIP WITH INDUSTRY AND FINANCIAL DISCLOSURE

In addition to disclosing relationship with industry and/or financial disclosures on the *cover letter* and *title* page of your manuscript, we ask that each author sign this form.

**To be published in the following journal (please check):**

*Journal of the American College of Cardiology(JACC)*  *JACC: Cardiovascular Interventions*  *JACC: Cardiovascular Imaging*  *JACC: Heart Failure*  *JACC: Clinical Electrophysiology*  *JACC: Basic Translational Science*

Article entitled: Cardiac structural and functional consequences of amyloid deposition by CMR and echocardiography and their prognostic roles

Manuscript number: JIMG040917-0441

Corresponding Author: Dr. Knight

Corresponding author's printed name: Dan Knight

First author's printed name: Dan Knight

**\*Corresponding Author's Responsibility**

To avoid delay in the publication of your manuscript, **complete and submit this form as quickly as possible.**

After you have submitted your electronic form, you will receive an email confirmation that includes a PDF copy. Please print and retain for your files. **If for some reason you are unable to complete this form electronically**, please contact the JACC office directly or print this form, fill in the spaces manually, and email, fax, or post mail a copy to:

*Journal of the American College of Cardiology(JACC)*

*JACC: Cardiovascular Interventions*

*JACC: Cardiovascular Imaging*

*JACC: Heart Failure*

*JACC: Clinical Electrophysiology*

*JACC: Basic Translational Science*

Heart House, 2400 N Street NW, Washington, DC, 20037

Fax: (202) 375-6819

Email: [jaccsd@acc.org](mailto:jaccsd@acc.org) [jaccint@acc.org](mailto:jaccint@acc.org) [jaccimg@acc.org](mailto:jaccimg@acc.org) [jacchf@acc.org](mailto:jacchf@acc.org) [jacccep@acc.org](mailto:jacccep@acc.org) [jaccbtr@acc.org](mailto:jaccbtr@acc.org)

Complete the section below, type your name into the Type Name box and input the date. *By submitting this form, you attest to being an author on the paper.*

Type Name: Helen Lachmann Date: 06/06/2017

Title and Company (if employer representative): Reader/Hon Consultant

I have **no relationship with industry** to disclose.

I have **no financial information** to disclose.

local\_p\_id: 314800

time: 1496760708

ip address: 195.195.101.112



AMERICAN COLLEGE OF CARDIOLOGY FOUNDATION  
AUTHOR RESPONSIBILITIES: RELATIONSHIP WITH INDUSTRY AND FINANCIAL DISCLOSURE

In addition to disclosing relationship with industry and/or financial disclosures on the *cover letter* and *title* page of your manuscript, we ask that each author sign this form.

**To be published in the following journal (please check):**

*Journal of the American College of Cardiology(JACC)*  *JACC: Cardiovascular Interventions*  *JACC: Cardiovascular Imaging*  *JACC: Heart Failure*  *JACC: Clinical Electrophysiology*  *JACC: Basic Translational Science*

Article entitled: Cardiac structural and functional consequences of amyloid deposition by CMR and echocardiography and their prognostic roles

Manuscript number: JIMG040917-0441R

Corresponding Author: Dr. Knight

Corresponding author's printed name: Fontana

First author's printed name: Knight

**\*Corresponding Author's Responsibility**

To avoid delay in the publication of your manuscript, **complete and submit this form as quickly as possible.**

After you have submitted your electronic form, you will receive an email confirmation that includes a PDF copy. Please print and retain for your files. **If for some reason you are unable to complete this form electronically**, please contact the JACC office directly or print this form, fill in the spaces manually, and email, fax, or post mail a copy to:

*Journal of the American College of Cardiology(JACC)*

*JACC: Cardiovascular Interventions*

*JACC: Cardiovascular Imaging*

*JACC: Heart Failure*

*JACC: Clinical Electrophysiology*

*JACC: Basic Translational Science*

Heart House, 2400 N Street NW, Washington, DC, 20037

Fax: (202) 375-6819

Email: [jaccsd@acc.org](mailto:jaccsd@acc.org) [jaccint@acc.org](mailto:jaccint@acc.org) [jaccimg@acc.org](mailto:jaccimg@acc.org) [jacchf@acc.org](mailto:jacchf@acc.org) [jacccep@acc.org](mailto:jacccep@acc.org) [jaccbtr@acc.org](mailto:jaccbtr@acc.org)

Complete the section below, type your name into the Type Name box and input the date. *By submitting this form, you attest to being an author on the paper.*

Type Name: Ashutosh Wechalekar Date: 4/12/2017

Title and Company (if employer representative):

I have **no relationship with industry** to disclose.

I have **no financial information** to disclose.

local\_p\_id: 314801

time: 1512465570

ip address: 195.195.100.208





AMERICAN COLLEGE OF CARDIOLOGY FOUNDATION  
AUTHOR RESPONSIBILITIES: RELATIONSHIP WITH INDUSTRY AND FINANCIAL DISCLOSURE

In addition to disclosing relationship with industry and/or financial disclosures on the *cover letter* and *title* page of your manuscript, we ask that each author sign this form.

**To be published in the following journal (please check):**

*Journal of the American College of Cardiology(JACC)*  *JACC: Cardiovascular Interventions*  *JACC: Cardiovascular Imaging*  *JACC: Heart Failure*  *JACC: Clinical Electrophysiology*  *JACC: Basic Translational Science*

Article entitled: Cardiac structural and functional consequences of amyloid deposition by CMR and echocardiography and their prognostic roles

Manuscript number: JIMG040917-0441

Corresponding Author: Dr. Knight

Corresponding author's printed name: Marianna Fontana

First author's printed name: Daniel Knight

**\*Corresponding Author's Responsibility**

To avoid delay in the publication of your manuscript, **complete and submit this form as quickly as possible.**

After you have submitted your electronic form, you will receive an email confirmation that includes a PDF copy. Please print and retain for your files. **If for some reason you are unable to complete this form electronically**, please contact the JACC office directly or print this form, fill in the spaces manually, and email, fax, or post mail a copy to:

*Journal of the American College of Cardiology(JACC)*

*JACC: Cardiovascular Interventions*

*JACC: Cardiovascular Imaging*

*JACC: Heart Failure*

*JACC: Clinical Electrophysiology*

*JACC: Basic Translational Science*

Heart House, 2400 N Street NW, Washington, DC, 20037

Fax: (202) 375-6819

Email: [jaccsd@acc.org](mailto:jaccsd@acc.org) [jaccint@acc.org](mailto:jaccint@acc.org) [jaccimg@acc.org](mailto:jaccimg@acc.org) [jacchf@acc.org](mailto:jacchf@acc.org) [jacccep@acc.org](mailto:jacccep@acc.org) [jaccbtr@acc.org](mailto:jaccbtr@acc.org)

Complete the section below, type your name into the Type Name box and input the date. *By submitting this form, you attest to being an author on the paper.*

Type Name: Julian Gillmore Date: 1st June 2017

Title and Company (if employer representative): UCL

I have **no relationship with industry** to disclose.

I have **no financial information** to disclose.

local\_p\_id: 314802

time: 1496299693

ip address: 128.40.221.213



AMERICAN COLLEGE OF CARDIOLOGY FOUNDATION  
AUTHOR RESPONSIBILITIES: RELATIONSHIP WITH INDUSTRY AND FINANCIAL DISCLOSURE

In addition to disclosing relationship with industry and/or financial disclosures on the *cover letter* and *title* page of your manuscript, we ask that each author sign this form.

**To be published in the following journal (please check):**

*Journal of the American College of Cardiology(JACC)*  *JACC: Cardiovascular Interventions*  *JACC: Cardiovascular Imaging*  *JACC: Heart Failure*  *JACC: Clinical Electrophysiology*  *JACC: Basic Translational Science*

Article entitled: Cardiac structural and functional consequences of amyloid deposition by CMR and echocardiography and their prognostic roles

Manuscript number: JIMG040917-0441

Corresponding Author: Dr. Knight

Corresponding author's printed name: Knight

First author's printed name: Knoght

**\*Corresponding Author's Responsibility**

To avoid delay in the publication of your manuscript, **complete and submit this form as quickly as possible.**

After you have submitted your electronic form, you will receive an email confirmation that includes a PDF copy. Please print and retain for your files. **If for some reason you are unable to complete this form electronically**, please contact the JACC office directly or print this form, fill in the spaces manually, and email, fax, or post mail a copy to:

*Journal of the American College of Cardiology(JACC)*

*JACC: Cardiovascular Interventions*

*JACC: Cardiovascular Imaging*

*JACC: Heart Failure*

*JACC: Clinical Electrophysiology*

*JACC: Basic Translational Science*

Heart House, 2400 N Street NW, Washington, DC, 20037

Fax: (202) 375-6819

Email: [jaccsd@acc.org](mailto:jaccsd@acc.org) [jaccint@acc.org](mailto:jaccint@acc.org) [jaccimg@acc.org](mailto:jaccimg@acc.org) [jacchf@acc.org](mailto:jacchf@acc.org) [jacccep@acc.org](mailto:jacccep@acc.org) [jaccbtr@acc.org](mailto:jaccbtr@acc.org)

Complete the section below, type your name into the Type Name box and input the date. *By submitting this form, you attest to being an author on the paper.*

Type Name: James moon Date: 27/5/2017

Title and Company (if employer representative):

I have **no relationship with industry** to disclose.

I have **no financial information** to disclose.

local\_p\_id: 437260

time: 1495897007

ip address: 85.255.232.248



AMERICAN COLLEGE OF CARDIOLOGY FOUNDATION  
AUTHOR RESPONSIBILITIES: RELATIONSHIP WITH INDUSTRY AND FINANCIAL DISCLOSURE

In addition to disclosing relationship with industry and/or financial disclosures on the *cover letter* and *title* page of your manuscript, we ask that each author sign this form.

**To be published in the following journal (please check):**

*Journal of the American College of Cardiology(JACC)*  *JACC: Cardiovascular Interventions*  *JACC: Cardiovascular Imaging*  *JACC: Heart Failure*  *JACC: Clinical Electrophysiology*  *JACC: Basic Translational Science*

Article entitled: Cardiac structural and functional consequences of amyloid deposition by CMR and echocardiography and their prognostic roles

Manuscript number: JIMG040917-0441

Corresponding Author: Dr. Knight

Corresponding author's printed name: Daniel Knight

First author's printed name: Daniel Knight

**\*Corresponding Author's Responsibility**

To avoid delay in the publication of your manuscript, **complete and submit this form as quickly as possible.**

After you have submitted your electronic form, you will receive an email confirmation that includes a PDF copy. Please print and retain for your files. **If for some reason you are unable to complete this form electronically**, please contact the JACC office directly or print this form, fill in the spaces manually, and email, fax, or post mail a copy to:

*Journal of the American College of Cardiology(JACC)*

*JACC: Cardiovascular Interventions*

*JACC: Cardiovascular Imaging*

*JACC: Heart Failure*

*JACC: Clinical Electrophysiology*

*JACC: Basic Translational Science*

Heart House, 2400 N Street NW, Washington, DC, 20037

Fax: (202) 375-6819

Email: [jaccsd@acc.org](mailto:jaccsd@acc.org) [jaccint@acc.org](mailto:jaccint@acc.org) [jaccimg@acc.org](mailto:jaccimg@acc.org) [jacchf@acc.org](mailto:jacchf@acc.org) [jacccep@acc.org](mailto:jacccep@acc.org) [jaccbtr@acc.org](mailto:jaccbtr@acc.org)

Complete the section below, type your name into the Type Name box and input the date. *By submitting this form, you attest to being an author on the paper.*

Type Name: Philip Nigel Hawkins Date: 31 May 2017

Title and Company (if employer representative):

I have **no relationship with industry** to disclose.

I have **no financial information** to disclose.

local\_p\_id: 314803

time: 1496220531

ip address: 128.40.221.214



AMERICAN COLLEGE OF CARDIOLOGY FOUNDATION  
AUTHOR RESPONSIBILITIES: RELATIONSHIP WITH INDUSTRY AND FINANCIAL DISCLOSURE

In addition to disclosing relationship with industry and/or financial disclosures on the *cover letter* and *title* page of your manuscript, we ask that each author sign this form.

**To be published in the following journal (please check):**

*Journal of the American College of Cardiology(JACC)*  *JACC: Cardiovascular Interventions*  *JACC: Cardiovascular Imaging*  *JACC: Heart Failure*  *JACC: Clinical Electrophysiology*  *JACC: Basic Translational Science*

Article entitled: Cardiac structural and functional consequences of amyloid deposition by CMR and echocardiography and their prognostic roles

Manuscript number: JIMG040917-0441R

Corresponding Author: Dr. Knight

Corresponding author's printed name: m fontana

First author's printed name: D knight

**\*Corresponding Author's Responsibility**

To avoid delay in the publication of your manuscript, **complete and submit this form as quickly as possible.**

After you have submitted your electronic form, you will receive an email confirmation that includes a PDF copy. Please print and retain for your files. **If for some reason you are unable to complete this form electronically**, please contact the JACC office directly or print this form, fill in the spaces manually, and email, fax, or post mail a copy to:

*Journal of the American College of Cardiology(JACC)*

*JACC: Cardiovascular Interventions*

*JACC: Cardiovascular Imaging*

*JACC: Heart Failure*

*JACC: Clinical Electrophysiology*

*JACC: Basic Translational Science*

Heart House, 2400 N Street NW, Washington, DC, 20037

Fax: (202) 375-6819

Email: [jaccsd@acc.org](mailto:jaccsd@acc.org) [jaccint@acc.org](mailto:jaccint@acc.org) [jaccimg@acc.org](mailto:jaccimg@acc.org) [jacchf@acc.org](mailto:jacchf@acc.org) [jacccep@acc.org](mailto:jacccep@acc.org) [jaccbtr@acc.org](mailto:jaccbtr@acc.org)

Complete the section below, type your name into the Type Name box and input the date. *By submitting this form, you attest to being an author on the paper.*

Type Name: M Fontana Date: 05/12/2017

Title and Company (if employer representative):

I have **no relationship with industry** to disclose.

I have **no financial information** to disclose.

local\_p\_id: 229557

time: 1512464165

ip address: 195.195.101.49