

Mass variance from archival X-ray properties of Dark Energy Survey Year-1 galaxy clusters

A. Farahi ^{1,2}★, X. Chen, ^{2,3} A. E. Evrard ^{1,2,4}, D. L. Hollowood, ⁵ R. Wilkinson, ⁶ S. Bhargava, ⁶ P. Giles, ⁶ A. K. Romer, ⁶ T. Jeltema, ⁵ M. Hilton, ⁷ A. Bermeo, ⁶ J. Mayers, ⁶ C. Vergara Cervantes, ⁶ E. Rozo, ⁸ E. S. Rykoff, ^{9,10} C. Collins, ¹¹ M. Costanzi, ¹² S. Everett, ⁵ A. R. Liddle, ^{13,14,15} R. G. Mann, ¹⁴ A. Mantz, ⁹ P. Rooney, ⁶ M. Sahlen ¹⁶, J. Stott ¹⁷, P. T. P. Viana, ^{18,19} Y. Zhang ²⁰, J. Annis, ²⁰ S. Avila ²¹, D. Brooks, ²² E. Buckley-Geer, ²⁰ D. L. Burke, ^{9,10} A. Carnero Rosell ^{23,24}, M. Carrasco Kind, ^{25,26} J. Carretero, ²⁷ F. J. Castander, ^{28,29} L. N. da Costa, ^{24,30} J. De Vicente, ²³ S. Desai, ³¹ H. T. Diehl, ²⁰ J. P. Dietrich, ^{32,33} P. Doel, ²² B. Flaugher, ²⁰ P. Fosalba, ^{28,29} J. Frieman, ^{20,34} J. García-Bellido, ³⁵ E. Gaztanaga, ^{28,29} D. W. Gerdes, ^{2,4} D. Gruen ^{9,10,36}, R. A. Gruendl, ^{25,26} J. Gschwend, ^{24,30} G. Gutierrez, ²⁰ K. Honscheid, ^{37,38} D. J. James, ³⁹ E. Krause, ⁴⁰ K. Kuehn, ⁴¹ N. Kuropatkin, ²⁰ M. Lima, ^{24,42} M. A. G. Maia, ^{24,30} J. L. Marshall, ⁴³ P. Melchior ⁴⁴, F. Menanteau, ^{25,26} R. Miquel, ^{27,45} R. L. C. Ogando, ^{24,30} A. A. Plazas ⁴⁴, E. Sanchez, ²³ V. Scarpine, ²⁰ M. Schubnell, ² S. Serrano, ^{28,29} I. Sevilla-Noarbe, ²³ M. Smith, ⁴⁶ F. Sobreira, ^{24,47} E. Suchyta ⁴⁸, M. E. C. Swanson, ²⁶ G. Tarle, ² D. Thomas ²¹, D. L. Tucker, ²⁰ V. Vikram, ⁴⁹ A. R. Walker, ⁵⁰ and J. Weller ^{12,32,51} (DES Collaboration)

Affiliations are listed at the end of the paper

Accepted 2019 September 18. Received 2019 September 11; in original form 2019 March 19

ABSTRACT

Using archival X-ray observations and a lognormal population model, we estimate constraints on the intrinsic scatter in halo mass at fixed optical richness for a galaxy cluster sample identified in Dark Energy Survey Year-One (DES-Y1) data with the redMaPPer algorithm. We examine the scaling behaviour of X-ray temperatures, T_X , with optical richness, λ_{RM} , for clusters in the redshift range $0.2 < z < 0.7$. X-ray temperatures are obtained from *Chandra* and *XMM* observations for 58 and 110 redMaPPer systems, respectively. Despite non-uniform sky coverage, the T_X measurements are > 50 per cent complete for clusters with $\lambda_{\text{RM}} > 130$. Regression analysis on the two samples produces consistent posterior scaling parameters, from which we derive a combined constraint on the residual scatter, $\sigma_{\ln T|\lambda} = 0.275 \pm 0.019$. Joined with constraints for T_X scaling with halo mass from the Weighing the Giants program and richness–temperature covariance estimates from the LoCuSS sample, we derive the richness-conditioned scatter in mass, $\sigma_{\ln M|\lambda} = 0.30 \pm 0.04_{(\text{stat})} \pm 0.09_{(\text{sys})}$, at an optical richness of approximately 100. Uncertainties in external parameters, particularly the slope and variance of the T_X –mass relation and the covariance of T_X and λ_{RM} at fixed mass, dominate the systematic error. The 95 per cent confidence region from joint sample analysis is relatively broad, $\sigma_{\ln M|\lambda} \in [0.14, 0.55]$, or a factor 10 in variance.

Key words: galaxies: clusters: general – X-rays: galaxies: clusters.

* E-mail: afarahi@andrew.cmu.edu

1 INTRODUCTION

Population statistics of galaxy clusters are acknowledged as a valuable probe of cosmological parameters (Allen, Evrard & Mantz 2011; Weinberg et al. 2013; Huterer & Shafer 2018), as illustrated by analysis of modern cluster samples (e.g. Vikhlinin et al. 2009; Rozo et al. 2010; Benson et al. 2013; Mantz et al. 2014; de Haan et al. 2016; Bocquet et al. 2018), and anticipated from larger and deeper cluster samples being assembled. The Dark Energy Survey (DES; Dark Energy Survey Collaboration et al. 2016) is identifying clusters using colour-based searches in five-band optical photometry. A small initial sample from the Science Verification survey phase, with 786 clusters, (Rykoff et al. 2016) is supplemented by a Year-1 (Y1) data sample containing 7000 clusters with 20 or more statistical galaxy members (McClintock et al. 2019).

The population statistics approach relies on comparing the number and spatial clustering of galaxy clusters, as a function of their observable properties and redshift, to theoretical expectations derived from simulations of dark matter haloes, particularly the halo mass function (HMF) (e.g. Jenkins et al. 2001; Evrard et al. 2002; Tinker et al. 2008; Murray, Power & Robotham 2013). To connect halo and cluster properties, a probabilistic model commonly referred to as the mass–observable relation is employed to map host halo mass to multiple cluster observables. This paper focuses on the statistical relationships between optical and X-ray properties of a cluster and the underlying total mass of the halo hosting it.

Ensemble-averaging, or stacking, to estimate mean mass as a function of galaxy richness has been applied to the DES-Y1 cluster sample by McClintock et al. (2019). The process of stacking has the drawback that it integrates out the variance in halo mass, M , conditioned on galaxy richness, λ . A complementary inference technique is needed to determine the width and shape of the conditional probability distribution, $\Pr(M | \lambda)$.

Both observations (Pratt et al. 2009; Reichert et al. 2011; Mahdavi et al. 2013; Lieu et al. 2016; Mantz et al. 2016a,b; Giles et al. 2017) and simulations (Evrard et al. 2008; Stanek et al. 2010; Farahi et al. 2018a) support a lognormal form for observable-mass conditional distributions. This form, coupled with a low-order polynomial approximation for the HMF, yields analytic expressions for the space density as a function of multiple observable properties as well as property-conditioned statistics of the massive haloes hosting groups and clusters (Evrard et al. 2014, hereafter, E14). We employ this model in our analysis, with particular emphasis on conditional property covariance.

The red-sequence Matched-filter Probabilistic Percolation (redMaPPer) identifies clusters using an empirically calibrated, matched-filter model for old, red galaxies (Rykoff et al. 2014). The algorithm outputs a probabilistic estimate of optical richness – the count of red galaxies inside a cluster – along with a mean cluster redshift and a set of up to five likely central galaxies. Previous studies found this photometric cluster-finder algorithm produces a highly complete and pure cluster sample with accurate redshift estimates (Rykoff et al. 2012; Rozo & Rykoff 2014; Rozo et al. 2015a,b).

The Sloan Digital Sky Survey (SDSS) DR-8 redMaPPer cluster sample (Rykoff et al. 2014) has recently been combined with ensemble-average weak-lensing masses (Simet et al. 2017) to produce cosmological constraints (Costanzi et al. 2018). A similar analysis is underway for DES-Y1 (McClintock et al. 2019). In both of these works, marginalization over the weakly constrained scatter between mass and richness weakens posterior likelihoods of cosmological parameters. The aim of our work is to provide an empirical constraint on the mass–richness variance, a result that will

be combined with other systematics calibration effort to refine and improve likelihood analysis of cluster counts for cosmology.

Integrated measures of clusters such as redMaPPer richness, λ_{RM} , X-ray temperature, T_X , and luminosity, L_X , are proxies for host halo mass in that each scales as a (typically) positive power of M . In general, each proxy has intrinsic variance generated by internal dynamics within haloes, as well as extrinsic scatter caused by projection, measurement uncertainties, and other effects. For the intrinsic component, the lognormal property covariance model of E14 provides expressions that link proxy properties to each other and to unobservable host halo mass. The expressions involve the local slope and curvature of the HMF because of the convolution required to map mass to the observed measures.

Here, we study the scaling behaviour of T_X as a function of λ_{RM} for a redMaPPer sample of clusters identified in DES-Y1 imaging data within the redshift range, $z \in [0.2, 0.7]$ (McClintock et al. 2019). X-ray properties of clusters contained in archival *Chandra* or *XMM* pointings are measured via the Mass Analysis Tool for *Chandra* (MATCha; Hollowood et al. 2018) or XCS data analysis pipelines (Giles et al. in preparation), respectively. We employ the Bayesian regression model of Kelly (2007) to estimate parameters of the conditional scaling, $\Pr(\ln T_X | \lambda_{\text{RM}})$.

The inference of mass scatter requires additional information, namely the T_X – M_{wl} scaling relation and the λ_{RM} – T_X covariance at fixed halo mass. These additional quantities are taken from previous studies (Mantz et al. 2016b; Farahi et al. 2019). Uncertainties on the inferred scatter are determined by marginalizing over uncertainties in the model priors.

The structure of this paper is as follows. In Section 2, we introduce the cluster sample and X-ray follow-up programs of the optically selected clusters. In Section 3, we describe the regression algorithm and the population model employed to obtain an estimate of the mass–richness scatter, with results presented in Section 4. In Section 5, we discuss our treatment of systematic uncertainties. Finally, we conclude in Section 6. Appendix A provides the tables of cluster properties employed in this work. Appendix B provides corrections for a small number of richness measurements using the X-ray emission peak locations of *Chandra* and *XMM* observations. Finally in Appendices C and D, we present the richness–temperature correlation at fixed halo mass and upper limits on the running of temperature variance at fixed optical richness, respectively.

We assume a flat Λ CDM cosmology with $\Omega_m = 0.3$ and $H_0 = 70 \text{ km s}^{-1} \text{ Mpc}^{-1}$. Distances and masses, unless otherwise noted, are defined as physical quantities with this choice of cosmology, rather than in comoving coordinates. We denote the mass inside spheres around the cluster centre as $M \equiv M_{500c}$, corresponding to an overdensity of 500 times the critical matter density at the cluster redshift.

2 DES-Y1 DATA

This work is based on data obtained during the DES-Y1 observational season, between 2013 August 31 and 2014 February 9 (Drlica-Wagner et al. 2018). During this period 1839 deg^2 was mapped out in three to four tilings using g , r , i , z filters. This strategy produces a shallower survey depth compared to the full-depth Science Verification data, but it covers a significantly larger area. We use approximately 1500 deg^2 of the main survey split into two contiguous areas, one overlapping the South Pole Telescope (SPT) Sunyaev-Zel’dovich Survey area, and the other overlapping the Stripe-82 (S82) deep field of SDSS. The sky footprint is illustrated in fig. 1 of McClintock et al. (2019).

Table 1. Supplemental X-ray sample size and median characteristics.

Source	N_{sam}	z_{med}	λ_{med}	$kT_{\text{X, med}}$ (keV)
<i>Chandra</i>	58	0.41	76	7.45
<i>XMM</i>	110	0.41	38	4.41

We first describe the main data products used in our analysis and refer the reader to corresponding papers for a more detailed overview. Imaging and galaxy catalogues associated with the redMaPPer catalogue used here are publicly available¹ in the first DES data release (DES DR-1; Abbott et al. 2018) and the Y1A1 GOLD wide-area object catalogue (Drlica-Wagner et al. 2018).

2.1 Optical cluster catalogue

We employ a volume-limited sample of galaxy clusters detected in the DES-Y1 photometric data using version 6.4.17 of the redMaPPer cluster-finding algorithm (Rykoff et al. 2016). The redMaPPer algorithm identifies clusters of red-sequence galaxies in the multidimensional space of four-band magnitudes and sky position. Starting from an initial spectroscopic seed sample of galaxies, the algorithm iteratively fits a model for the local red sequence. It then performs a matched filter step to find cluster candidates and assign membership probabilities to potential members. Starting with a most likely central galaxy, ideally the brightest cluster galaxy, member weights, p_{mem} , of additional cluster galaxies are computed with a matched-filter algorithm based on spatial, colour, and magnitude filters (Rykoff et al. 2014). The method is iterative, and the ambiguity of selecting a central galaxy is recognized by recording likelihoods for up to five central galaxies in each cluster. The final richness, λ_{RM} , is defined as the sum of the p_{mem} values of its member galaxies. Empirical tests using the SDSS DR-8 sample indicate that, for redshifts $0.1 < z < 0.4$, the algorithm is > 90 per cent (99 per cent) complete for richness above 30 (50) (Rykoff et al. 2014). Completeness tests using DES-Y1 data are in preparation.

2.2 Supplemental X-ray catalogues

Table 1 summarizes contents of the *XMM* and *Chandra* samples employed in this work, and Fig. 1 shows the distribution of cluster samples as a function of their observables. The X-ray catalogues are provided in Appendix A and will be available from the online journal in machine-readable format. In the following, we detail how the redMaPPer clusters are matched to the X-ray sources identified in *Chandra* and *XMM* archival data, and how the X-ray properties of the matched sources are measured.

The two methods produce independent luminosity and temperature estimates, and we adjust the latter to remove the known spectral bias between the two X-ray telescopes (Schellenberger et al. 2015). The two catalogues have similar depth (median redshifts of 0.41) while differing in their coverage of halo mass scale, reflected in Table 1 by offsets in the median values of mass proxies. The median richness is 76 for *Chandra*, 38 for *XMM*, and the respective median X-ray temperatures are 7.45 and 4.41 keV. In terms of natural logarithms, these offsets are 0.48 and 0.52, respectively. Both samples have range of a factor of 10 in both λ_{RM} and T_{X} dimensions.

We are concerned about the relation between the properties of the redMaPPer-selected cluster observables and its host halo. Therefore, we need to correct for the fraction of the miscentred population. Instead of modelling the miscentred population, we correct our cluster observables with an associated X-ray centre and re-estimate the optical richness at X-ray peak (see Appendix B for more detail). In the following, richness, λ_{RM} , implies the optical richness assigned by the redMaPPer algorithm at the X-ray peak, unless otherwise mentioned.

2.2.1 Chandra-redMaPPer Catalogues

The analysis of *Chandra* observations was conducted with the MATCha pipeline described in Hollowood et al. (2018). We briefly outline the steps here. Starting from the volume-limited, $\lambda \geq 20$ redMaPPer catalogue, we analyse all archival *Chandra* data, public at the time of the analysis, which overlapped redMaPPer cluster positions. In brief, after standard data reduction and cleaning, we search for a significant X-ray cluster detection starting from the redMaPPer position and iteratively re-centring towards the X-ray peak using an initial 500 kpc aperture. If the cluster is X-ray detected ($\text{SNR} > 5$), a spectrum is extracted, and we attempt to fit for the X-ray temperature, T_{X} . An iterative process is employed to centre, determine cluster temperature and luminosity in the same X-ray band, and estimate cluster radius based on the T_{X} fit. To evaluate T_{X} , the metal abundance is fixed at $0.3 Z_{\odot}$, using the model from Anders & Grevesse (1989). For clusters with sufficiently well-sampled data, the output of the MATCha algorithm includes the centroid location, L_{X} , and T_{X} within a series of apertures, 500 kpc, r_{2500} , r_{500} , and core-cropped r_{500} . In this work, we only use core included $r_{2500} T_{\text{X}}$ values.

In addition, we estimate the X-ray emission peak position of each detected cluster for use in studying the redMaPPer centring distribution (Hollowood et al. 2018; Zhang et al. 2019). The peak is determined, after smoothing the point-source subtracted cluster image with a Gaussian of 50 kpc width, as the brightest pixel within 500 kpc of redMaPPer position. We perform a visual check and then remove clusters for which the position, source spectrum, or background spectrum were significantly affected by instrumental chip edges or where the identified X-ray cluster was a foreground or background cluster not matched to the redMaPPer cluster.

2.2.2 XCS-redMaPPer Catalogues

For the the *XMM*-redMaPPer analysis (Giles et al. in preparation), the redMaPPer sample is matched to all *XMM* ObsIDs (with useable EPIC science data) under the requirement that the redMaPPer position be within 13 arcmin of the aim point of the ObsID. Next, the *XMM* observations were filtered based upon exposure time. The exposure time is determined within a radius of 5 pixels centred on the redMaPPer position, with the mean and median required to be > 3 ks and > 1.5 ks, respectively. Here the mean is taken to be the exposure time averaged over the sum of each pixel, while the median refers to 50 per cent of the pixels in the enclosed region. These cuts are applied to ensure the redMaPPer cluster of interest is within the *XMM* FOV and has a sufficiently long exposure time for reliable SNR and T_{X} measurements.

X-ray sources for each ObsID were then detected using the XCS Automated Pipeline Algorithm (XAPA; Lloyd-Davies et al. 2011). At the position of the most likely central galaxy of each redMaPPer

¹<https://des.nsa.illinois.edu/releases/drl>

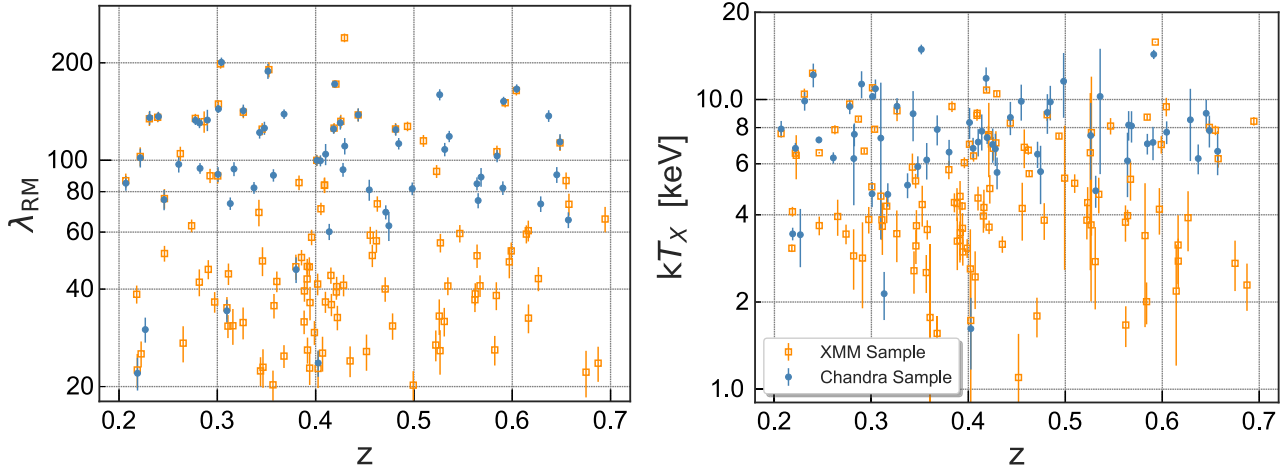


Figure 1. Supplementary sample properties. Left-hand and right-hand panels show the richness and hot gas temperatures as a function of cluster redshift obtained from *XMM* and *Chandra* archival data. The optical richness is re-measured at the location of the X-ray emission peak (see Section 2.2 for more detail). *XMM* temperatures are scaled to the *Chandra* according to equation (1). The error bars are 68 per cent measurement errors.

cluster, we match to all XAPA-defined extended sources within a comoving distance of 2 Mpc. Cut-out DES and *XMM* images are then produced and visually examined to assign a XAPA source to the optical cluster. Through this process, the final *XMM*–redMaPPer sample contains 110 clusters.

The luminosities and temperatures for the *XMM*–redMaPPer sample are derived using the XCS Post Processing Pipeline (Lloyd-Davies et al. 2011), with updates presented in Giles et al. (in preparation). Cluster spectra are extracted and fit in the 0.3–7.9 keV band with an absorbed MeKaL model (Liedahl, Osterheld & Goldstein 1995). The fits are performed using the `xspec` package (Arnaud 1996), with the metallicity fixed at 0.3 Z_{\odot} . Using an iterative procedure, spectra are extracted within r_{2500} . We estimate an initial temperature within the XAPA source detection region (Lloyd-Davies et al. 2011), and an initial r_{2500} estimated from the r_{2500} – kT relation of Arnaud, Pointecouteau & Pratt (2005). A temperature is estimated within this r_{2500} , and hence an updated r_{2500} estimated as above. This process is then iterated until r_{2500} converges to 10 per cent. To assess the reliability of temperature estimates, variance of the temperature is calculated for each iteration. This involves generating a grid of 5-by-5 pixels and estimating the temperature for each region. We assign a mean temperature to each cluster which satisfies $\sigma(T_x)/(T_x) \leq 0.25$, where σ is the standard deviation and $\langle T_x \rangle$ is the mean of estimated temperatures. Similar to the *Chandra* analysis, the peak is determined, after smoothing the point-source subtracted cluster image with a Gaussian of 50 kpc width, as the brightest pixel within 500 kpc of redMaPPer position.

The different X-ray detection method, combined with the larger collecting area of *XMM* compared to the *Chandra* observatory, produces an X-ray sample for *XMM* that both is larger and extends to lower richness than the *Chandra* detections. We defer a detailed analysis of the X-ray selection processes used here to future work. Here, we first analyse each sample independently, combining them after demonstrating consistency of posterior scaling parameters.

2.2.3 X-ray temperature as primary mass proxy

While X-ray luminosities, L_X , are measured for a larger number of clusters than are temperatures, the larger variance in non-core

excised L_X (Fabian et al. 1994; Mantz et al. 2016b) and the complexities of modelling the supplemental survey masks motivate the choice of T_X as the primary link to halo mass. If we assume each archival data can be treated as an L_X limited sample, then there could be a secondary selection function. This secondary selection is mainly a function of L_X . Due to the complexity of modelling this secondary L_X -selection, we do not perform and report L_X – λ_{RM} relation. As we will see, systematic uncertainties limit the precision with which we can recover the scatter in underlying halo mass.

An important systematic effect that we address is the misalignment of X-ray cluster temperatures derived from the instruments on the *Chandra* and *XMM* observatories (Schellenberger et al. 2015). Since we are particularly interested in population variance, it is important to align the T_X measurements before performing a joint sample regression. We use the calibration of Rykoff et al. (2016) based on 41 SDSS redMaPPer-selected clusters,

$$\log_{10}(T_X^{\text{Chandra}}) = 1.0133 \log_{10}(T_X^{\text{XMM}}) + 0.1008, \quad (1)$$

with temperatures in units of keV. Rykoff et al. (2016) note that the above relation is consistent with that of Schellenberger et al. (2015). We employ the *Chandra* temperature scale in analysis below.

Within our sample, there are <20 clusters with both *Chandra* and *XMM* temperatures. The calibration relation from these clusters alone is consistent with that of Rykoff et al. (2016), but with larger uncertainties.

M_{gas} is another low-scatter mass proxy (Mulroy et al. 2019). Currently, M_{gas} measurement for these sets of clusters is unavailable. We are planning on employing M_{gas} measurement as another cluster mass proxy in a future work.

2.2.4 X-ray completeness

The supplemental samples, with fewer than 200 clusters, are far from complete relative to the full DES-Y1 redMaPPer population of 7000 clusters. The incompleteness is primarily due to the limited sky coverage of the two observatory archives to the depths required to detect distant clusters.

If the X-ray signal-to-noise ratio (SNR) is >5 , typically a few hundreds of photons, there is enough signal to measure the X-ray luminosity; but at least 1000 photons are needed to get a reliable

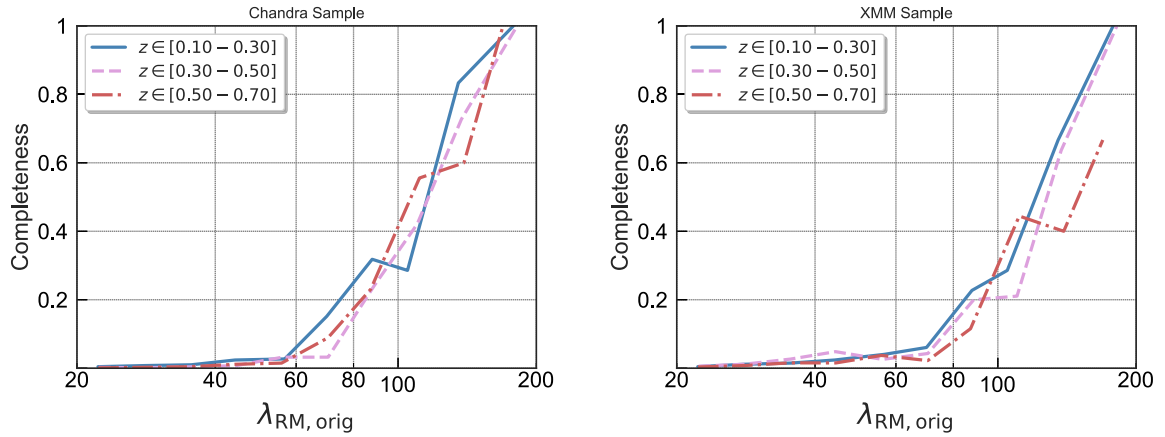


Figure 2. X-ray completeness of the supplementary samples. Lines show the fractions of DES-Y1 redMaPPer clusters with both L_X and T_X measurements from *Chandra* (left) and *XMM* (right) archival data. Solid, dashed, and dash–dot lines denoting increasing redshift bins given in the legend. Here, we employ the redMaPPer original richness.

estimation of the T_X . Fewer counts leads to larger errors, but not excluded from the sample. The variable depths of the archival pointings produce a complex pattern of flux limits across the optical sample. The observations also have different levels of background noise, adding to the complexity of X-ray selection modelling. Thorough synthetic observations (Bahé, McCarthy & King 2012; ZuHone et al. 2014) are needed to accurately model this selection function. We defer such modelling to future work.

The archival nature of the follow-up also produces a mix of previously known and newly detected X-ray systems. About 60 per cent of clusters are newly detected X-ray systems. Fig. 2 shows the fraction of redMaPPer clusters with T_X measurements as a function of redMaPPer richness and redshift. As may be expected, completeness is high for the largest clusters. The sample is more than half complete in X-ray temperature at high optical richness values, $\lambda_{\text{RM}} \gtrsim 130$. At lower richness, the completeness falls off, with more systems being found in the *XMM* archival analysis. We note in Appendix D that the posterior scaling parameters found in Section 4 are relatively insensitive to an imposed minimum richness threshold (see Fig. D1), but the effects of X-ray selection may affect our estimates of variance at low richness, particularly at high redshift.

3 POPULATION STATISTICS

The observed richness and X-ray temperature reflect properties of its host halo, subject to additional contributions from projected line-of-sight structure and other source of noise. Costanzi et al. (2019) develop a probabilistic model that maps intrinsic richness, λ_{true} , to measured richness, λ_{RM} . Generically, projection both widens the variance in $\text{Pr}(\lambda_{\text{RM}}|M)$ and adds a moderate degree of skewness. We do not apply corrections for projection effects, taking instead an approach that assumes $\text{Pr}(\lambda_{\text{RM}}, T_X|M, z)$ is a bivariate lognormal.

The integrated stellar and gas mass fractions in haloes extracted from recent hydrodynamic simulations follow a lognormal form, as validated at percent-level accuracy by Farahi et al. (2018a). This form is also supported by previous cosmological simulations (Evrard et al. 2008; Stanek et al. 2010; Truong et al. 2018). Below, we show that normalized residuals in the measured scaling relation are consistent with a lognormal form, supporting this choice for our population inference model.

Our inference model has two steps: (i) T_X is regressed against richness to determine scaling properties, particularly the residual² scatter in T_X (Section 4.1), (ii) we combine the scatter of T_X – λ_{RM} with weak-lensing mass– λ_{RM} relations to infer the halo mass scatter at fixed optical richness (Section 4.2).

3.1 Regression model

We assume a lognormal form for the likelihood of a cluster of richness λ to also have gas temperature T

$$\text{Pr}(\ln T | \lambda, z) = \frac{1}{\sqrt{2\pi}\sigma_{\ln T|\lambda}} \exp \left\{ -\frac{(\ln T - \langle \ln kT | \lambda, z \rangle)^2}{2\sigma_{\ln T|\lambda}^2} \right\}. \quad (2)$$

Here, and below, we may drop subscripts for simplicity of notation; $T \equiv T_X$ and $\lambda \equiv \lambda_{\text{RM}}$. Following E14 notation, we write the log-mean scaling of kT , expressed in keV, with richness as

$$\langle \ln T | \lambda, z \rangle = [\pi_{T|\lambda} + 2/3 \ln(E(z))] + \alpha_{T|\lambda} \ln(\lambda/\lambda_{\text{med}}), \quad (3)$$

where $\alpha_{T|\lambda}$ is the slope, $\lambda_{\text{med}} = 70$ is the median richness of the joint sample, $\pi_{T|\lambda}$ is the logarithmic intercept at $z = 0$, and $E(z) \equiv H(z)/H_0$ is the evolution of the Hubble parameter.

We regress T_X on λ_{RM} , rather than the other way around, because optical richness is the primary selection variable. Under the assumption that the X-ray temperature at fixed optical richness is either complete or randomly selected, explicit modelling of X-ray selection process is not required (see Kelly 2007, section 5.1.1). We use the regression method of Kelly (2007), which returns posterior estimates of the slope and normalization along with the residual variance, $\sigma_{\ln T|\lambda}^2$.

The redshift dependence of the normalization in equation (3) reflects a self-similar expectation, based on virial equilibrium,

²While the term ‘intrinsic scatter’ is often used here, we use residual so as to avoid confusion with the scatter associated with simulated haloes and their properties measured within localized (typically spherical) cosmological volumes. The residual variance in temperature at fixed observed cluster richness will be larger than the intrinsic variance at the relevant host halo richness because of projection. Cluster members lying outside of the primary halo hosting the optical cluster add variance to the intrinsic relation and also bias the mean (Costanzi et al. 2019).

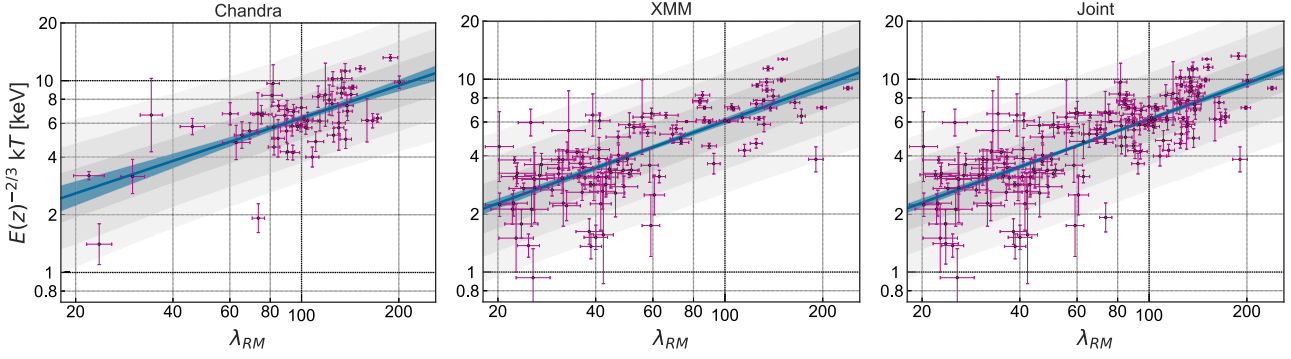


Figure 3. X-ray temperature–redMaPPer richness scaling behaviour from the *Chandra*, *XMM*, and joint archival data samples (left to right) using a pivot richness of 70. *XMM* temperatures have been modified using equation (1) to align with *Chandra* estimates. In each panel, the blue line and blue shaded region are the best fit and 68 per cent confidence interval of the mean logarithmic relation, equation (3). Gray shaded regions show 1σ , 2σ , and 3σ residual scatter about the scaling relation. Fit parameters are given in Table 2. Richness errors are provided directly by the redMaPPer algorithm.

that $T \propto [E(z)M]^{2/3}$ (Kaiser 1991; Bryan & Norman 1998). For observations spanning a range of redshift, the quantity $E^{-2/3}(z)kT$ should be a closer reflection of halo mass, M , than temperature alone. Over the redshift interval of our analysis, the $E^{-2/3}(z)$ factor decreases modestly, from 0.94 at $z = 0.2$ to 0.77 at $z = 0.7$.

While the slope and scatter of scaling relations may be scale-dependent and/or evolving with redshift (e.g. Ebrahimpour et al. 2018; Farahi et al. 2018a), our data are not yet rich enough to model these effects. We crudely test richness dependence by splitting both samples into two non-overlapping samples, with different characteristic scales, at their pivot richness, and find no evidence of scale dependence in the posterior scaling relation parameters.

The regression method of Kelly (2007) includes uncertainties associated with the independent variable, here $\ln \lambda_{RM}$, by assuming a mixture model in that variable. The number of mixture elements is a free parameter in the method. We use two components in our analysis, and have performed tests to demonstrate that our results are insensitive to this hyperparameter.

3.2 Mass scatter inference

In the E14 population model, the variance in temperature of a sample conditioned on the selection variable, λ , is set by the joint (X-ray + optical) selection mass variance scaled by the slope, $\alpha_{T|M}$, of the temperature–mass relation,

$$\sigma_{\ln T|\lambda}^2 = \alpha_{T|M}^2 [\sigma_{\ln M|\lambda}^2 + \sigma_{\ln M|T}^2 - 2r_{\lambda T} \sigma_{\ln M|\lambda} \sigma_{\ln M|T}], \quad (4)$$

where $\sigma_{\ln M|\lambda}^2$ is the variance in halo mass at fixed optical richness (and similarly for temperature) and $r_{\lambda T}$ is the correlation coefficient between log-richness and log-temperature at fixed halo mass. We use the variance relationship, $\sigma_{\ln M|T}^2 = \sigma_{\ln T|M}^2 / \alpha_{T|M}^2$, and assume that all parameters are constant with mass and redshift.

Rearranging the expression isolates what this study is after, the mass variance conditioned on optical richness,

$$\sigma_{\ln M|\lambda}^2 = \sigma_{\ln M|T}^2 \left[\left(\frac{\sigma_{\ln T|\lambda}^2}{\sigma_{\ln T|M}^2} - (1 - r_{\lambda T}^2) \right)^{1/2} + r_{\lambda T} \right]^2. \quad (5)$$

We ignore local curvature in the mass function, but note that its effect is to reduce the mass variance amplitude in equation (5). This suggests that the upper limits we derive below are somewhat conservative.

Table 2. Best-fitting parameters for the T_X – λ_{RM} relation, equation (3).

Sample	Normalization $e^{\pi T \lambda}$ (keV)	Slope $\alpha_{T \lambda}$	Residual scatter $\sigma_{\ln T \lambda}$
<i>Chandra</i>	5.23 ± 0.26	0.56 ± 0.09	0.260 ± 0.032
<i>XMM</i>	4.88 ± 0.15	0.61 ± 0.05	0.289 ± 0.025
Joint	4.97 ± 0.12	0.62 ± 0.04	0.275 ± 0.019

If there is no property correlation, $r_{\lambda T} = 0$, the above expression simplifies to

$$\sigma_{\ln M|\lambda}^2 = \sigma_{\ln M|T}^2 \left(\frac{\sigma_{\ln T|\lambda}^2}{\sigma_{\ln T|M}^2} - 1 \right). \quad (6)$$

Note that the first term inside the parentheses is guaranteed to be greater than one because, when $r_{ab} = 0$, the simple Euclidean condition

$$\sigma_{b|a}^2 = \sigma_{b|M}^2 + \left(\frac{\alpha_{b|M}}{\alpha_{a|M}} \right)^2 \sigma_{a|M}^2, \quad (7)$$

holds for any pair of properties $\{a, b\}$.

4 RESULTS

In this section, we present temperature–richness scaling parameters derived from *Chandra* and *XMM* data. Consistent posterior constraints are found, motivating a joint analysis. We then introduce additional priors on the missing elements of the residual mass variance conditioned on observed richness in Section 4.2, and present the resulting constraints.

4.1 redMaPPer richness–hot gas temperature relation

Fig. 3 shows the T_X – λ_{RM} relation for the *Chandra*, *XMM*, and joint samples, respectively, and best-fitting parameters are listed in Table 2. The blue lines and shaded regions present best fit and 68 per cent confidence intervals for the mean log scaling, equation (3). In this regression, λ_{RM} is remeasured at the location of the X-ray peak, for each cluster resulting in mostly small corrections and a small number of significant adjustments, as detailed in Appendix B.

We find consistent slopes of 0.56 ± 0.09 (*Chandra*) and 0.61 ± 0.05 (*XMM*). The *XMM* temperature normalization, expressed in the *Chandra* system via the adjustment of equation (1),

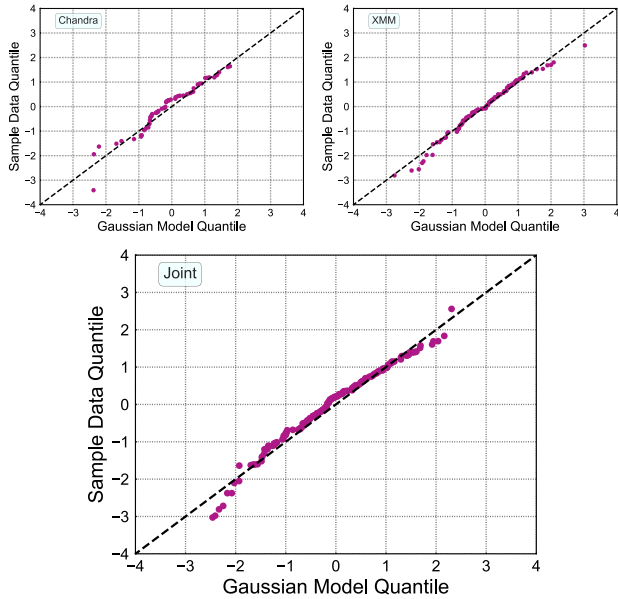


Figure 4. Normalized, ranked residuals, equation (8), of the *Chandra* (top, left), *XMM* (top, right), and joint (bottom) samples follow closely a lognormal form, as indicated by the close proximity of the points to the dashed line of equality.

is 4.88 ± 0.15 keV, roughly 1σ lower than the *Chandra* value of 5.23 ± 0.26 . The *XMM* temperature normalization, before the adjustment of equation (1), is 3.82 ± 0.12 .

Gray shaded regions show the residual scatter about the mean relation. There are a small number of outliers, particularly towards low values of T_X given λ_{RM} or, equivalently, a larger λ_{RM} than expected given their T_X . Such systems are likely to have a boosted richness due to lower mass haloes along the line of sight that boost λ_{RM} more than T_X (Rozo & Rykoff 2014; Ge et al. 2019).

We test the shape of $\Pr(kT_X | \lambda, z)$ by examining the normalized residuals of the data about the best-fitting mean scaling,

$$\delta_{T|\lambda, i} = \frac{\ln(E^{-2/3}(z_i)kT_i) - \alpha_{T|\lambda} \ln(\lambda_i) - \pi_{T|\lambda}}{(\sigma_{\ln T|\lambda}^2 + \sigma_{\text{err}, i}^2)^{1/2}}, \quad (8)$$

using posterior maximum-likelihood estimates of the parameters $\pi_{T|\lambda}$, $\alpha_{T|\lambda}$, and $\sigma_{\ln T|\lambda}^2$, and the index i corresponds to the i th cluster. The quadrature inclusion of $\sigma_{\text{err}, i}^2$, the square of the measurement uncertainty in $\ln T_i$, is appropriate if measurement errors are both accurately estimated and also uncorrelated with the underlying astrophysical processes responsible for the residual scatter.

Fig. 4 shows quantile–quantile (Q–Q) plots of the residuals in both samples. The Q–Q plot compares the quantiles of the rank-ordered residuals, expressed in units of the measured standard deviation, equation (8), to those expected under the assumed Gaussian model. The Q–Q form of both samples support the lognormal likelihood, equation (2), as shown by the proximity of the measured quantiles to the dashed line of unity. There is a very slight skew in the distribution, with more weight to the low-temperature side as expected from projection effects (Cohn et al. 2007). In a previous work, Mantz et al. (2008) employed the Q–Q plot and illustrated the log-normality of their cluster sample (see their fig. 4).

Within the statistical uncertainties, the slope of temperature–richness scaling is consistent with a simple self-similar expectation of $2/3$, the result obtained if the star formation efficiency is constant, so that $\lambda \propto M_{\text{star}} \propto M$, and the temperature scales as $T \propto [E(z)M]^{2/3}$

Table 3. External constraints required for the richness-conditioned mass variance, equation (5). Uncertainties are 68% confidence intervals.

Parameter	Value	Reference
$\sigma_{\ln T M}$	0.16 ± 0.02	Mantz et al. (2016b)
$\alpha_{T M}$	0.62 ± 0.04	Mantz et al. (2016b)
$\sigma_{\ln M T}$	0.26 ± 0.04	(Inferred from above)
$r_{\lambda T}$	$-0.25^{+0.24}_{-0.22}$	Farahi et al. (2019)

from virial equilibrium (Kaiser 1991; Bryan & Norman 1998). However, both dynamical and weak-lensing analysis of the same SDSS sample produce mean behaviour $M \propto \lambda_{RM}^{1.3 \pm 0.1}$, which shows deviation from the self-similar expectation (Farahi et al. 2016; Simet et al. 2017), and the Weighing the Giants (WtG) analysis yielding $T_X \propto M^{0.62 \pm 0.04}$.

If $r_{\lambda T}$ is close to zero and there is no scatter about the mean relation, then it is expected that temperature scales with mass with slope $\alpha_{T|\lambda} = 0.81 \pm 0.10$. There is moderate tension with our result of 0.62 ± 0.04 for the joint sample, which we suspect reflects the lack of low luminosity and temperature systems having low optical richness in the X-ray archives.

4.2 Mass scatter conditioned on optical richness

To derive mass variance with the multiproperty population framework, information on additional scaling parameters is required, as reflected in equation (5). We employ recent derivations of scaling behaviour from the WtG program (Mantz et al. 2015), particularly the slope and residual scatter of the T_X – M_{wl} relation derived by Mantz et al. (2016b). In the WtG analysis, X-ray properties are regressed against lensing mass estimates for a sample of 40 clusters. Their posterior estimates of the scatter in temperature, $\sigma_{\ln T|\mu} = 0.16 \pm 0.02$, and slope, $\alpha_{T|\mu} = 0.62 \pm 0.04$, imply a scatter in mass at fixed temperature of 0.26 ± 0.04 . These values are listed in Table 3, and we assume that the uncertainties are Gaussian distributed.

For the correlation coefficient between temperature and richness at fixed halo mass, we use constraints derived from nearby LoCuSS clusters by Farahi et al. (2019).³ The X-ray bright LoCuSS sample (Mulroy et al. 2019) contains 41 clusters in the redshift range $0.15 < z < 0.3$, with 33 overlapping the SDSS sample region. The redMaPPer richness estimates for those systems range from 27 to 181, with the median value near 100. Using the same model framework as this paper, modified to include the original X-ray selection criteria, Farahi et al. (2019) derive the first empirical constraint on the correlation coefficient, $r_{\lambda T} = -0.25^{+0.24}_{-0.22}$.

With these additional elements, we can now derive an estimate of the richness-conditioned mass scatter, equation (5), resulting in $\sigma_{\ln M|\lambda} = 0.30 \pm 0.10$. To get this result, we employ the values derived from the joint sample temperature variance conditioned on richness. Since the correlation coefficient is broad and slightly asymmetric (see Fig. C1), we use Monte Carlo sampling of the terms on the right-hand side of equation (5), discarding any combinations that produce unphysical results (negative values inside the square root). The resultant posterior distributions are shown in Fig. 5 for the *Chandra*, *XMM*, and joint analysis with values of $\sigma_{\ln T|\lambda}^2$ from Table 2.

³The full posterior chains are publicly available in a figshare repository, <https://doi.org/10.6084/m9.figshare.8001218>.

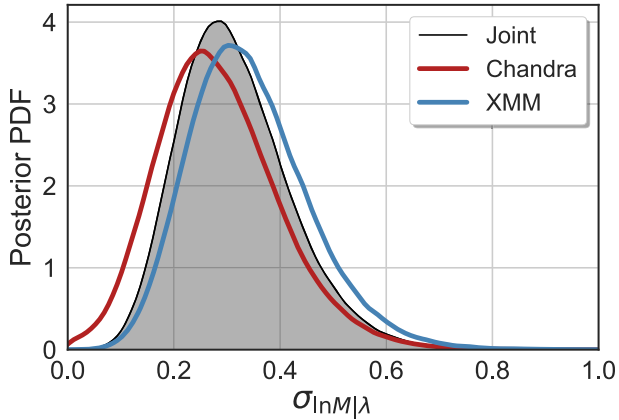


Figure 5. Marginalized posterior likelihood of the halo mass scatter at fixed richness derived from the supplementary X-ray samples given in the legend.

For the joint sample analysis, the median value of the posterior mass scatter is

$$\sigma_{\ln M|\lambda} = 0.30 \pm 0.04_{(\text{stat})} \pm 0.09_{(\text{sys})}, \quad (9)$$

where the quoted uncertainties are 68 per cent confidence level. The statistical error derives from the T_X – λ_{RM} residual variance uncertainty while the systematic uncertainty is derived from the quoted errors of the required external parameters. The overall 95 per cent confidence region is broad, spanning 0.14–0.55.

5 DISCUSSION

Here, we review our treatment of systematic uncertainties, including priors, before turning to a comparison with existing estimates of the mass scatter using optical proxies in both observed cluster samples and simulated halo ensembles.

5.1 Systematic uncertainties

The richness-conditioned mass variance is inferred from the observed temperature variance via equation (5). Uncertainties in the additional elements (see Table 3) propagates to broaden the uncertainty in $\sigma_{\ln M|\lambda}$.

Fig. 6 explores the contribution of each element’s uncertainty by systematically setting the error in specific terms to zero – i.e. fixing the value of each element. The yellow curve fixes the T_X – M_{wl} relation parameters, both slope and scatter, while the red curve fixes the correlation coefficient, $r_{\lambda T}$. Finally, the blue curve shows the impact of having perfect knowledge of all above parameters.

The temperature–mass relation uncertainties make the largest contribution to the uncertainty in mass variance. We note that the contribution of the temperature–mass uncertainty in the slope is negligible and it is dominated by the uncertainty in the scatter. The width of the blue curve, the statistical uncertainty, is 0.04.

5.2 Comparing to previous studies

Using a smaller set of redMaPPer clusters identified in science verification (DES-SV) data, Rykoff et al. (2016) estimated the slope and the scatter of T_X – λ_{RM} scaling relation to be 0.60 ± 0.09 and $0.28^{+0.07}_{-0.05}$, respectively. Employing a set of rich redMaPPer clusters identified from SDSS DR8 data, Ge et al. (2019) also estimated the

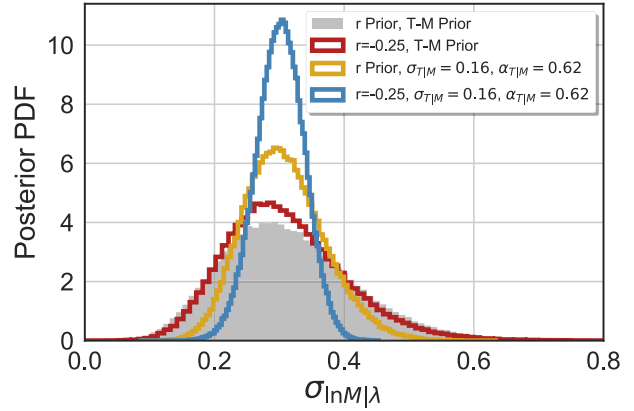


Figure 6. Illustration of the impact of uncertainties in the external elements, Table 3. The gray shaded region shows the joint analysis result fully marginalized over external uncertainties. Red and yellow lines assume, respectively, that $r_{\lambda T}$ or the T_X – M scaling parameters are exactly known. The T_X – M parameters dominate the error budget. The blue line shows the case of all external quantities known. The width of the blue is our statistical uncertainties.

slope and the scatter of T_X – λ_{RM} scaling relation to be 0.79 ± 0.06 and 0.24 ± 0.03 , respectively. With a larger sample size, we find values in agreement with those of Rykoff et al. (2016) and Ge et al. (2019), but with smaller parameter uncertainties.

Our measurements can also be compared to those of Rozo & Rykoff (2014). That work set is similar in spirit to this study but differs in some key details. The correlation coefficient, $r_{\lambda T}$, was set to zero, and the analysis did not propagate uncertainties in the T_X – M relation. Employing sub-samples of X-ray selected clusters from the literature, including the XCS (Mehrtens et al. 2012), MCXC (Piffaretti et al. 2011), ACCEPT (Cavagnolo et al. 2009), and Mantz et al. (2010) cluster samples, they estimate $\sigma_{\ln M|\lambda} = 0.26 \pm 0.03$, with the quoted uncertainty being entirely statistical. Our central value is consistent with theirs, but a key step of our analysis is to more carefully revise uncertainties by incorporating a coherent multiproperty model.

In a separate work, Rozo et al. (2015a) directly estimated the scatter in richness at fixed SZ-mass by comparing the redMaPPer catalogue to the *Planck* SZ-selected cluster catalogue (*Planck* Collaboration XXIX 2014). They estimate $\sigma_{\ln M|\lambda} = 0.277 \pm 0.026$, with the reported uncertainties again being purely statistical. We note that the SZ-masses are inferred from Y_{SZ} – M relation, so covariance between λ_{RM} and Y_{SZ} needs to be taken into account in this analysis.

In an independent analysis using abundance and stacked weak-lensing profiles for roughly 8000 SDSS redMaPPer clusters with richness, $20 \leq \lambda_{\text{RM}} \leq 100$, and redshift, $0.1 < z < 0.33$, Murata et al. (2018) derive $\sigma_{\ln M|\lambda} \sim 0.46 \pm 0.05$ at a pivot mass scale of $3 \times 10^{14} h^{-1} M_{\odot}$, equivalent to a richness of 24, from their mean scaling relation. In their analysis, the scatter is allowed to run with mass, and they find that $\sigma_{\ln M|\lambda} \propto M^{-0.17 \pm 0.03}$. Evaluating their result at a richness of 70, or a mass scale roughly a factor of 4 larger, leads to a mass scatter of 0.36, consistent with our findings.

This work is concerned about mass scatter conditioned on optical richness. To estimate the richness scatter at fixed halo mass, Saro et al. (2015) modelled the total richness variance conditioned on halo mass with a Poisson term and a lognormal scatter term. If this additional Poisson contribution, at pivot richness of our joint sample $\lambda_{\text{piv}} \sim 72$, is subtracted from the total variance, the richness

Table 4. Best-fitting parameters for the T_X - λ_{RM} relation. Samples are splitted into two non-overlapping subsets with $z > 0.4$ and $z \leq 0.4$. The notation is similar to Table 2.

Sample	Slope $\alpha_{T \lambda}$	Residual scatter $\sigma_{\ln T \lambda}$
<i>Chandra</i> ($z \leq 0.4$)	0.60 ± 0.13	0.30 ± 0.06
<i>XMM</i> ($z \leq 0.4$)	0.56 ± 0.07	0.27 ± 0.04
Joint ($z \leq 0.4$)	0.59 ± 0.05	0.27 ± 0.03
<i>Chandra</i> ($z > 0.4$)	0.51 ± 0.15	0.25 ± 0.05
<i>XMM</i> ($z > 0.4$)	0.65 ± 0.08	0.32 ± 0.04
Joint ($z > 0.4$)	0.65 ± 0.06	0.29 ± 0.03

variance conditioned on the halo mass yields

$$\text{Var}(\ln \lambda | M) \equiv \frac{\text{Var}(\mu | \ln \lambda)}{\alpha_{\mu|\ln \lambda}^2} = \exp(-(\ln \lambda | M)) + \sigma_{\ln \lambda | M}^2, \quad (10)$$

where $\text{Var}(\mu | \ln \lambda) = 0.093_{-0.047}^{+0.082}$ is the halo mass variance conditioned on optical richness, and $\alpha_{\mu|\ln \lambda}^2 = 1.356 \pm 0.052$ is the slope of M - λ_{RM} relation (McClintock et al. 2019). Plugging these numbers into equation (10), we infer

$$\sigma_{\ln \lambda | M} = 0.20_{-0.08}^{+0.10}. \quad (11)$$

This result is consistent with what is previously found employing redMaPPer clusters from SDSS survey (Saro et al. 2015; Simet et al. 2017; Costanzi et al. 2018).

5.3 Redshift dependence

We find no evidence of the redshift evolution for the slope and the scatter of the T_X - λ_{RM} relation. We split the *Chandra*, *XMM*, and joint samples in half at $z = 0.4$. The T_X - λ_{RM} relation results are presented in Table 4.

Farahi et al. (2018a) studied the redshift evolution of integrated stellar mass-halo mass scaling relation employing the hydrodynamical simulations. They find a mild redshift evolution for both slope and the scatter of this relation. The statistical uncertainties of our sample are larger than the magnitude of the redshift evolution they noticed. Therefore, we cannot rule out or confirm such a small evolution using the current sample.

5.4 Effect of potential selection bias on $\sigma_{\ln \lambda | M}$

A potential source of systematic uncertainty in our analysis is the lack of a selection model for the archival X-ray analysis. It is well known that ignoring the sample selection can lead to biased estimation (Giles et al. 2017; Mantz 2019; Mulroy et al. 2019). The modest sampling of $\lambda_{\text{RM}} < 100$ (see Fig. 2) leaves open the possibility that only the X-ray brightest subset of clusters are being measured at low optical richness. Such sample truncation in flux would be likely to influence temperature selection, eliminating low- T_X clusters and thereby distorting estimates of both the slope and variance at low richness values. We defer a detailed study of X-ray selection modelling to future work, but we argue that this secondary selection effect is unlikely to be a source of significant systematic uncertainty for the richest systems.

For the richest population, our estimate of T_X - λ_{RM} scatter is in agreement with those of Rykoff et al. (2016) and Ge et al. (2019). It is worth noting that, Ge et al. (2019) employed an independent way of selecting the sample; thus, consistency with the estimate of scatter is reassuring. We show in Appendix D that the current

data do not display strong dependence on richness scale. The upper limits on the mass scatter are secure for $\lambda_{\text{RM}} \geq 100$, but application to lower richness systems could be biased if there is strong running of the mass-richness scatter with scale. If the selection effect is not negligible, it does have to be very large, 50 per cent, in order to have a significant impact on our key result, i.e. $\sigma_{\ln \lambda | M}$. If we take a scenario in which $\sigma_{\ln T | \lambda}$ is underestimated by 50 per cent, then our constraint on the mass scatter would be $\sigma_{\ln M | \lambda} = 0.55_{-0.12}^{+0.15}$, a shift of about 2σ uncertainty.

The most conservative approach is to interpret the mass scatter constraints we report as appropriate to richness $\lambda_{\text{RM}} \geq 100$, since the supplementary samples are, cumulatively, 50 per cent complete above this richness. Under Poisson statistics, the expected fractional scatter in richness at fixed mass would be 0.1 or less, which in turn implies minimum mass scatter of $0.1 \alpha_{\ln M | \lambda} \simeq 0.13$ for a mass-richness slope of 1.3 (Farahi et al. 2016; Simet et al. 2017). This value lies just outside the 2σ low tail of our posterior joint-sample constraints.

5.5 Sensitivity to T_X - M relation

Considering the size of systematic and statistical uncertainties, incorporating different T_X - M relation does not have a significant effect on the inferred $\sigma_{\ln M | \lambda}$. We rely on T_X - M relation from the WtG program (Mantz et al. 2015, 2016b) to infer $\sigma_{\ln M | \lambda}$. There are other estimates of T_X - M relation in the literature (Lieu et al. 2016; Farahi et al. 2018b; Mulroy et al. 2019), but the way that T_X is measured in this work is better aligned with the T_X measure of Mantz et al. (2015). For example, Lieu et al. (2016) and Farahi et al. (2018b) employ T_X measured within 300 kpc physical aperture while we use core included r_{2500} T_X values. For completeness, we can ask what the impact of employing a different T_X - M relation would be. If we use the $M_{\text{WL}}-T_X$ relation reported in (Mulroy et al. 2019), we get $\sigma_{\ln M | \lambda} = 0.32_{-0.15}^{+0.21}$. The scaling relation values by (Lieu et al. 2016) give $\sigma_{\ln M | \lambda} = 0.20_{-0.12}^{+0.17}$. Both results are statistically consistent with our key result based on the WtG sample.

Our results should be interpreted with caution when the low temperature or low optical richness clusters population is concerned. The WtG sample (Mantz et al. 2015) mainly comprises clusters with $T_X \leq 5$ (keV). As a result, the inferred $\sigma_{\ln M | \lambda_{\text{RM}}}$ is mainly valid for the most massive systems. Generalization of this finding to clusters with low temperature should be taken with caution. A future direction is to study the X-ray and mass properties of systems with $\lambda_{\text{RM}} \leq 70$.

5.6 Application to DES cluster cosmology

The mass variance constraints we derive can inform priors for cluster cosmology studies. For the DES survey, the model that links observed cluster richness with halo mass (Costanzi et al. 2018) is more complex than the lognormal population model we apply here. In particular, Costanzi et al. (2019) develop an explicit model of projection that is a component of a hierarchical Bayes framework for $\text{Pr}(\lambda_{\text{RM}} | M, z)$. The base of that framework is an intrinsic halo population variance frames as a Poisson distribution convolved with a Gaussian of width, σ_{intr} .

However, Costanzi et al. (2018) find that a lognormal model for the intrinsic halo population gives cosmological constraints consistent with the Poisson plus Gaussian model, and posterior estimates of $\text{Pr}(M | \lambda_{\text{RM}}, z)$ are found to be nearly lognormal. More work is needed to fully incorporate constraints of the type derived in this study into cosmological analysis pipelines.

6 CONCLUSION

We use archival X-ray observations of 168 redMaPPer clusters identified in DES-Y1 imaging to place limits on the mass variance at fixed galaxy richness, a critical component of cluster cosmology analysis. The X-ray observables, T_X and L_X , of galaxy clusters at redshifts $0.2 < z < 0.7$ falling within archival *Chandra* or *XMM* archival data are extracted via MATCha and XAPA processing pipelines, respectively. We determine parameters of a power-law T_X - λ_{RM} relation, particularly the residual scatter in the log of temperature conditioned on richness, and infer the halo mass scatter at fixed optical richness using a lognormal multiproperty population model.

Given the modest sample size and the lack of a detailed X-ray selection model, we do not attempt to add scaling of the mass variance with cluster richness or redshift. The median redshift of both samples is 0.41 while the median richness is 76 for *Chandra* and 47 for the larger *XMM* sample. We infer residual scatter in temperature at fixed richness, $\sigma_{\ln T|\lambda} = 0.26 \pm 0.03$ (*Chandra*) and 0.29 ± 0.03 (*XMM*). The moderately larger variance in the lower richness *XMM* sample may be providing a hint of mass dependence. Larger samples and a model for archival X-ray selection are required to address this issue.

Constraining the mass scatter requires additional information: the slope and variance of the T_X - M relation as well as the correlation between λ_{RM} and T_X at fixed halo mass. Incorporating values from the Weighing the Giants and LoCuSS samples, respectively, and using the richness-conditioned temperature variance from the combined sample, we derive the mass scatter parameter, $\sigma_{\ln M|\lambda} = 0.30 \pm 0.04_{(\text{stat})} \pm 0.09_{(\text{sys})}$.

Our joint X-ray sample mainly consists of optically rich clusters, $\lambda_{\text{RM}} \geq 100$, with cumulative completeness of about 50 per cent complete, and the prior on T_X - M relation is taken from the WtG program, where the sample mainly consists of hot clusters with $T_X \leq 5$ keV. Therefore, our results should be interpreted as the mass scatter constraint on clusters of richness $\lambda_{\text{RM}} \geq 100$. A generalization to lower mass systems should be done with care as more work is needed to model selection in the sparsely sampled low richness population.

The contribution of the external parameter uncertainties in these systematics to the overall uncertainty budget is considerable. Therefore, as we make progress to better understand the scaling relations of multiwavelength observables, it is necessary to pay attention to the off-diagonal elements of the mass-conditioned property covariance matrix. Mantz et al. (2016a) pioneered empirical estimates of the full covariance matrix for X-ray observables and Farahi et al. (2019) take the lead in combining optical, X-ray, and SZ observables in the LoCuSS sample. Improved understanding of the broad property covariance matrix behaviour will allow us to improve the mass variance constraints from studies such as this.

ACKNOWLEDGEMENTS

A. Farahi is supported by a McWilliams Postdoctoral Fellowship. A. Farahi and A. E. Evrard acknowledge funding support from NASA Chandra grant CXC17800360. T. Jeltema is pleased to acknowledge funding support from DE-SC0010107 and DE-SC0013541.

Funding for the DES Projects has been provided by the US Department of Energy, the US National Science Foundation, the Ministry of Science and Education of Spain, the Science and Technology Facilities Council of the United Kingdom, the Higher Education Funding Council for England, the National Center

for Supercomputing Applications at the University of Illinois at Urbana-Champaign, the Kavli Institute of Cosmological Physics at the University of Chicago, the Center for Cosmology and Astro-Particle Physics at the Ohio State University, the Mitchell Institute for Fundamental Physics and Astronomy at Texas A&M University, Financiadora de Estudos e Projetos, Fundação Carlos Chagas Filho de Amparo à Pesquisa do Estado do Rio de Janeiro, Conselho Nacional de Desenvolvimento Científico e Tecnológico and the Ministério da Ciência, Tecnologia e Inovação, the Deutsche Forschungsgemeinschaft and the Collaborating Institutions in the Dark Energy Survey.

The Collaborating Institutions are Argonne National Laboratory, the University of California at Santa Cruz, the University of Cambridge, Centro de Investigaciones Energéticas, Medioambientales y Tecnológicas-Madrid, the University of Chicago, University College London, the DES-Brazil Consortium, the University of Edinburgh, the Eidgenössische Technische Hochschule (ETH) Zürich, Fermi National Accelerator Laboratory, the University of Illinois at Urbana-Champaign, the Institut de Ciències de l'Espai (IEEC/CSIC), the Institut de Física d'Altes Energies, Lawrence Berkeley National Laboratory, the Ludwig-Maximilians Universität München and the associated Excellence Cluster Universe, the University of Michigan, the National Optical Astronomy Observatory, the University of Nottingham, The Ohio State University, the University of Pennsylvania, the University of Portsmouth, SLAC National Accelerator Laboratory, Stanford University, the University of Sussex, Texas A&M University, and the OzDES Membership Consortium.

Based in part on observations at Cerro Tololo Inter-American Observatory, National Optical Astronomy Observatory, which is operated by the Association of Universities for Research in Astronomy (AURA) under a cooperative agreement with the National Science Foundation.

The DES data management system is supported by the National Science Foundation under grant numbers AST-1138766 and AST-1536171. The DES participants from Spanish institutions are partially supported by MINECO under grants AYA2015-71825, ESP2015-66861, FPA2015-68048, SEV-2016-0588, SEV-2016-0597, and MDM-2015-0509, some of which include ERDF funds from the European Union. IFAE is partially funded by the CERCA program of the Generalitat de Catalunya. Research leading to these results has received funding from the European Research Council under the European Union's Seventh Framework Program (FP7/2007-2013) including ERC grant agreements 240672, 291329, and 306478. We acknowledge support from the Brazilian Instituto Nacional de Ciência e Tecnologia (INCT) e-Universe (CNPq grant 465376/2014-2).

This manuscript has been authored by Fermi Research Alliance, LLC under Contract No. DE-AC02-07CH11359 with the U.S. Department of Energy, Office of Science, Office of High Energy Physics. The United States Government retains and the publisher, by accepting the article for publication, acknowledges that the United States Government retains a non-exclusive, paid-up, irrevocable, world-wide license to publish or reproduce the published form of this manuscript, or allow others to do so, for United States Government purposes.

REFERENCES

- Abbott T. M. C. et al., 2018, *ApJS*, 239, 18
 Allen S. W., Evrard A. E., Mantz A. B., 2011, *ARA&A*, 49, 409
 Anders E., Grevesse N., 1989, *Geochim. Cosmochim. Acta*, 53, 197

- Arnaud M., Pointecouteau E., Pratt G. W., 2005, *A&A*, 441, 893
 Arnaud K. A. et al., 1996, in Jacoby G. H., Barnes J., eds, ASP Conf. Ser. Vol. 101, Astronomical Data Analysis Software and Systems V. Astron. Soc. Pac., San Francisco, p. 17
 Bahé Y. M., McCarthy I. G., King L. J., 2012, *MNRAS*, 421, 1073
 Benson B. A. et al., 2013, *ApJ*, 763, 147
 Bocquet S. et al., 2019, *ApJ*, 878, 55
 Bryan G. L., Norman M. L., 1998, *ApJ*, 495, 80
 Cavagnolo K. W. et al., 2009, *ApJS*, 182, 12
 Cohn J. D. et al., 2007, *MNRAS*, 382, 1738
 Costanzi M. et al., 2018, preprint (arXiv:1810.09456)
 Costanzi M. et al., 2019, *MNRAS*, 482, 490
 Dark Energy Survey Collaboration et al., 2016, *MNRAS*, 460, 1270
 de Haan T. et al., 2016, *ApJ*, 832, 95
 Drlica-Wagner A. et al., 2018, *ApJS*, 235, 33
 Ebrahimpour L. et al., 2018, preprint (arXiv:1805.03465)
 Evrard A. E. et al., 2002, *ApJ*, 573, 7
 Evrard A. E. et al., 2008, *ApJ*, 672, 122
 Evrard A. E. et al., 2014, *MNRAS*, 441, 3562
 Fabian A. C. et al., 1994, *MNRAS*, 267, 779
 Farahi A. et al., 2016, *MNRAS*, 460, 3900
 Farahi A. et al., 2018a, *MNRAS*, 478, 2618
 Farahi A. et al., 2018b, *A&A*, 620, A8
 Farahi A. et al., 2019, *Nature Commun.*, 10,
 Ge C. et al., 2019, *MNRAS*, 484, 1946
 Giles P. A. et al., 2017, *MNRAS*, 465, 858
 Hollowood D. L. et al., 2019, *ApJS*, 244, 22
 Huterer D., Shafer D. L., 2018, *Rep. Prog. Phys.*, 81, 016901
 Jenkins A. et al., 2001, *MNRAS*, 321, 372
 Kaiser N., 1991, *ApJ*, 383, 104
 Kelly B. C., 2007, *ApJ*, 665, 1489
 Liedahl D. A., Osterheld A. L., Goldstein W. H., 1995, *ApJ*, 438, L115
 Lieu M. et al., 2016, *A&A*, 592, A4
 Lloyd-Davies E. J. et al., 2011, *MNRAS*, 418, 14
 Mahdavi A. et al., 2013, *ApJ*, 767, 116
 Mantz A. et al., 2008, *MNRAS*, 387, 1179
 Mantz A. et al., 2010, *MNRAS*, 406, 1773
 Mantz A. B., 2019, *MNRAS*, 485, 4863
 Mantz A. B. et al., 2014, *MNRAS*, 440, 2077
 Mantz A. B. et al., 2015, *MNRAS*, 449, 199
 Mantz A. B. et al., 2016a, *MNRAS*, 456, 4020
 Mantz A. B. et al., 2016b, *MNRAS*, 463, 3582
 McClintock T. et al., 2019, *MNRAS*, 482, 1352
 Mehrrens N. et al., 2012, *MNRAS*, 423, 1024
 Mulroy S. L. et al., 2019, *MNRAS*, 484, 60
 Murata R. et al., 2018, *ApJ*, 854, 120
 Murray S. G., Power C., Robotham A. S. G., 2013, *Astron. Comput.*, 3, 23
 Piffaretti R. et al., 2011, *A&A*, 534, A109
 Planck Collaboration XXIX, 2014, *A&A*, 571, A29
 Pratt G. W. et al., 2009, *A&A*, 498, 361
 Reichert A. et al., 2011, *A&A*, 535, A4
 Rozo E., Rykoff E. S., 2014, *ApJ*, 783, 80
 Rozo E. et al., 2010, *ApJ*, 708, 645
 Rozo E. et al., 2015a, *MNRAS*, 450, 592
 Rozo E. et al., 2015b, *MNRAS*, 453, 38
 Rykoff E. S. et al., 2012, *ApJ*, 746, 178
 Rykoff E. S. et al., 2014, *ApJ*, 785, 104
 Rykoff E. S. et al., 2016, *ApJS*, 224, 1
 Saro A. et al., 2015, *MNRAS*, 454, 2305
 Schellenberger G. et al., 2015, *A&A*, 575, A30
 Simet M. et al., 2017, *MNRAS*, 466, 3103
 Stanek R. et al., 2010, *ApJ*, 715, 1508
 Tinker J. et al., 2008, *ApJ*, 688, 709
 Truong N. et al., 2018, *MNRAS*, 474, 4089
 Vikhlinin A. et al., 2009, *ApJ*, 692, 1060
 Weinberg D. H. et al., 2013, *Phys. Rep.*, 530, 87
 Zhang Y. et al., 2019, *MNRAS*, 487, 2578
 ZuHone J. A., Veronica B., Hallman E. J., Randall S. W., Foster A. R., Schmid C., 2014, Proc. 13th Python in Science Conference (SciPy 2014)

SUPPORTING INFORMATION

Supplementary data are available at [MNRAS](#) online.

Please note: Oxford University Press is not responsible for the content or functionality of any supporting materials supplied by the authors. Any queries (other than missing material) should be directed to the corresponding author for the article.

APPENDIX A: CLUSTER CATALOGUES

In Tables A1 and A2, we provide the optical and the X-ray properties of *Chandra* and *XMM* clusters, i.e. the data vector, employed in this work. The MEM_MATCH_ID is the redMaPPer

Table A1. *Chandra* clusters.

MEM_MATCH_ID	z_λ	LAMBDA_CHISQ	LAMBDA_CHISQ (X-ray peak)	kT_X (keV)	Obsid (s)
2	0.310	195.07 ± 6.78	200.65 ± 6.90	10.90 ^{+0.84} _{-0.81}	9331,15099
3	0.424	174.46 ± 5.07	171.91 ± 4.49	7.39 ^{+0.41} _{-0.32}	13396,16355,17536
4	0.307	146.24 ± 4.04	144.10 ± 4.00	10.24 ^{+0.26} _{-0.26}	12260,16127,16282,16524,16525,16526
5	0.355	178.84 ± 8.71	188.40 ± 10.06	14.89 ^{+0.59} _{-0.55}	4966
6	0.373	139.18 ± 4.67	138.85 ± 4.72	7.88 ^{+1.08} _{-0.80}	13395
8	0.243	135.48 ± 5.08	136.44 ± 4.69	12.16 ^{+1.36} _{-0.92}	15097
10	0.330	141.08 ± 5.96	142.26 ± 6.28	9.48 ^{+0.73} _{-0.53}	11710,16285
12	0.534	160.33 ± 6.45	159.39 ± 6.29	7.51 ^{+3.04} _{-1.41}	13466
14	0.282	129.00 ± 4.30	132.86 ± 4.36	9.46 ^{+0.66} _{-0.45}	3248,11728
15	0.610	169.08 ± 5.77	165.92 ± 5.63	7.71 ^{+0.84} _{-0.55}	12264,13116,13117
16	0.289	132.62 ± 4.75	130.37 ± 4.73	6.25 ^{+2.57} _{-1.30}	17162,16271,17162
17	0.597	144.88 ± 5.51	152.04 ± 5.00	14.32 ^{+0.52} _{-0.52}	13401,16135,16545
19	0.421	127.98 ± 4.61	124.99 ± 4.26	11.83 ^{+1.25} _{-0.90}	12259
20	0.231	136.78 ± 7.18	135.36 ± 6.69	9.88 ^{+0.79} _{-0.66}	15108
21	0.350	139.94 ± 7.49	125.67 ± 5.83	5.86 ^{+0.63} _{-0.37}	17185

Table A2. *XMM* clusters.

MEM_MATCH.ID	z_λ	LAMBDA_CHISQ	LAMBDA_CHISQ (X-ray peak)	kT_X (keV)	XCS_NAME
1	0.430	234.50 ± 7.52	238.88 ± 7.37	$8.07^{+0.22}_{-0.21}$	XMMXCSJ025417.8-585705.2
2	0.310	195.07 ± 6.78	198.50 ± 6.67	$6.11^{+0.14}_{-0.14}$	XMMXCSJ051636.6-543120.8
3	0.424	174.46 ± 5.07	171.91 ± 4.79	$5.78^{+0.70}_{-0.59}$	XMMXCSJ041114.1-481910.9
4	0.307	146.24 ± 4.04	149.23 ± 3.98	$8.46^{+0.25}_{-0.24}$	XMMXCSJ024529.3-530210.7
5	0.355	178.84 ± 8.71	190.51 ± 10.17	$3.39^{+0.83}_{-0.56}$	XMMXCSJ224857.4-443013.6
8	0.243	135.48 ± 5.08	135.74 ± 4.70	$9.48^{+0.36}_{-0.34}$	XMMXCSJ213516.8-012600.0
10	0.330	141.08 ± 5.96	140.76 ± 5.94	$7.06^{+0.78}_{-0.67}$	XMMXCSJ213511.8-010258.0
14	0.282	129.00 ± 4.30	134.66 ± 4.43	$7.45^{+0.24}_{-0.22}$	XMMXCSJ233738.6-001614.5
15	0.610	169.08 ± 5.77	164.19 ± 5.68	$7.29^{+0.76}_{-0.62}$	XMMXCSJ055943.5-524937.5
17	0.597	144.88 ± 5.51	150.54 ± 4.93	$12.11^{+0.07}_{-0.07}$	XMMXCSJ234444.0-424314.2
19	0.421	127.98 ± 4.61	125.71 ± 4.58	$8.31^{+0.24}_{-0.23}$	XMMXCSJ043818.3-541916.5
20	0.231	136.78 ± 7.18	134.34 ± 6.71	$8.05^{+0.48}_{-0.44}$	XMMXCSJ202323.2-553504.7
24	0.494	126.99 ± 4.31	127.26 ± 4.33	$5.79^{+0.17}_{-0.16}$	XMMXCSJ024339.4-483338.3
25	0.427	130.39 ± 6.17	131.88 ± 6.31	$5.26^{+0.71}_{-0.56}$	XMMXCSJ213538.5-572616.6
26	0.450	138.53 ± 6.45	138.08 ± 6.31	$6.41^{+0.28}_{-0.26}$	XMMXCSJ030415.7-440153.0

Cluster Identification Number that shall be used to match the X-ray clusters to the original redMaPPer clusters (McClintock et al. 2019). The full original redMaPPer DES Y1A1 catalogues will be available at <http://risa.stanford.edu/redmapper/> in FITS format. LAMBDA_CHISQ and LAMBDA_CHISQ (X-ray peak) are the original redMaPPer optical richness and the new richness assigned to each cluster at the location of the X-ray emission peak, respectively. XCS_NAME in Table A2 is the unique source identifier which could be used to match with the XCS source catalogue (Giles et al. in preparation). The full X-ray catalogues will be available from the online journal in machine-readable formats.

APPENDIX B: X-RAY EMISSION PEAK CENTRING SENSITIVITY

We are concerned about the relation between the properties of the redMaPPer-selected cluster observables and its host halo. Therefore, we need to correct for the fraction of the miscentred population. The mass scale of the redMaPPer host haloes is studied in McClintock et al. (2019) by correcting for the miscentred clusters. Instead of modelling, we correct our cluster observables with an associated X-ray centre. To assign a centre, we assume the hot gas content of galaxy clusters traces the gravitational potential sourced by the host halo. Specifically, we estimate the centre of the host halo with the location of the X-ray emission peak. We run the redMaPPer algorithm and assign a new optical richness to each X-ray extended source which is matched to a redMaPPer-selected cluster. Fig. B1 shows the assigned richness at the X-ray emission peak versus the original redMaPPer richness. Except for a handful of miscentred clusters, the change in the richness is negligible (see Zhang et al. 2019, for more detail). We also find that the estimated richness is insensitive to the data obtained by different instruments and the two X-ray analysis pipelines.

APPENDIX C: RICHNESS-TEMPERATURE COVARIANCE

Farahi et al. (2019) studied the full property covariance of 10 observables, including redMaPPer richness and X-ray temperature,

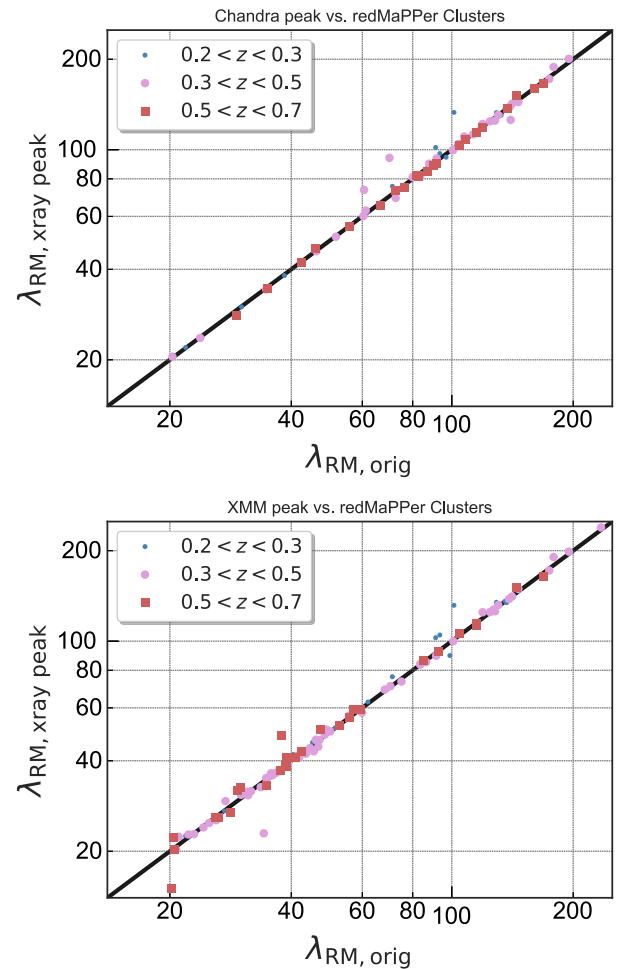


Figure B1. Re-estimation of redMaPPer-selected clusters richness at the X-ray emission peak versus their original redMaPPer richness. Left-hand (right-hand) panel shows the clusters with a matched X-ray source in the *Chandra* (*XMM*) archival data set. The black line is a unity line for the reference.

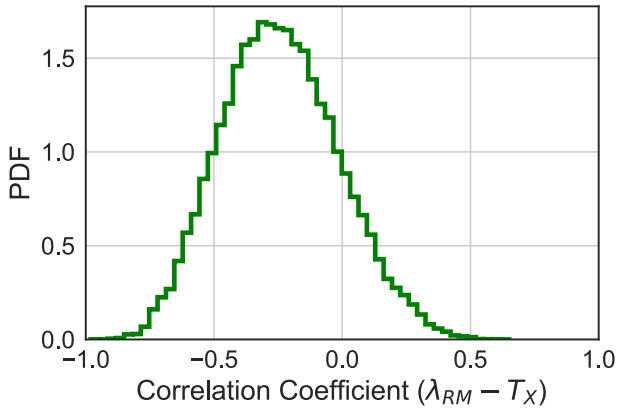


Figure C1. The marginalized posterior distribution for the $\ln(\lambda_{\text{RM}})$ and $\ln(T_X)$ correlation coefficient about fixed host halo mass employed in this work. This is taken from Farahi et al. (2019).

regressed on the weak-lensing mass. Their sample consist of a 41 X-ray luminosity selected, low-redshift clusters with weak-lensing mass measurement for each individual cluster. Fig. C1 presents their marginalized posterior distribution for the $\ln(\lambda_{\text{RM}})$ and $\ln(T_X)$ correlation coefficient about weak-lensing mass, which is employed in this work. Clearly a strong positive and negative correlations are ruled out with a high statistical significance.

APPENDIX D: RUNNING OF VARIANCE WITH RICHNESS

We further study the change in the scatter parameter for a subset of clusters by progressively applying $\lambda_{\text{RM}} > \lambda_{\text{cut}}$ (Fig. D1). We find that within the 68 per cent statistical confidence intervals the estimated intrinsic scatter about the mean relation does not change. This implies that the bias caused by the X-ray analysis pipeline is negligible, or otherwise there is a miraculous running of the scatter that cancels the X-ray selection bias. Saying that, one should be cautious that a different subset of redMaPPer cluster sample, with a larger sample size or a different X-ray analysis pipeline, can have different characteristics.

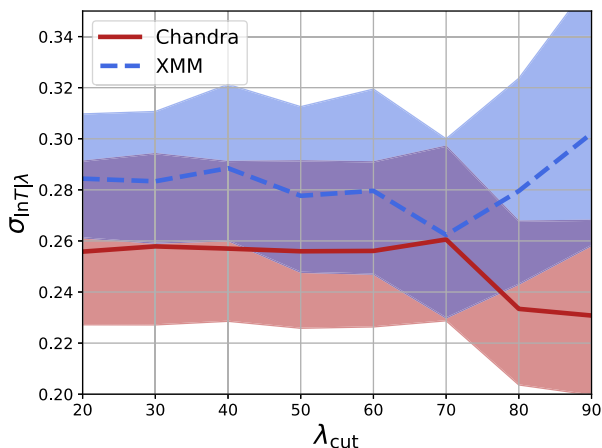


Figure D1. Constraints on the scatter of the T_X – λ_{RM} relation derived from subsamples of *Chandra* (blue, dashed line) and *XMM* (red solid line) data thresholded by redMaPPer richness, $\lambda_{\text{RM}} > \lambda_{\text{cut}}$. Shaded regions show 68 per cent confidence intervals.

- ¹MeWilliams Center for Cosmology, Department of Physics, Carnegie Mellon University, Pittsburgh, Pennsylvania 15312, USA
- ²Department of Physics, University of Michigan, Ann Arbor, MI 48109, USA
- ³Department of Physics, Yale University, New Haven, CT 06511, USA
- ⁴Department of Astronomy, University of Michigan, Ann Arbor, MI 48109, USA
- ⁵Santa Cruz Institute for Particle Physics, Santa Cruz, CA 95064, USA
- ⁶Department of Physics and Astronomy, Pevensey Building, University of Sussex, Brighton, BN1 9QH, UK
- ⁷Astrophysics & Cosmology Research Unit, School of Mathematics, Statistics & Computer Science, University of KwaZulu-Natal, Westville Campus, Durban 4041, South Africa
- ⁸Department of Physics, University of Arizona, Tucson, AZ 85721, USA
- ⁹Kavli Institute for Particle Astrophysics & Cosmology, PO Box 2450, Stanford University, Stanford, CA 94305, USA
- ¹⁰SLAC National Accelerator Laboratory, Menlo Park, CA 94025, USA
- ¹¹Astrophysics Research Institute, Liverpool John Moores University, IC2, Liverpool Science Park, 146 Brownlow Hill, Liverpool, L3 5RF, UK
- ¹²Universitäts-Sternwarte, Fakultät für Physik, Ludwig-Maximilians-Universität München, Scheinerstr. 1, D-81679 München, Germany
- ¹³CENTRA, Instituto Superior Técnico, Universidade de Lisboa, Av. Rovisco Pais 1, P-1049-001 Lisboa, Portugal
- ¹⁴Institute for Astronomy, University of Edinburgh, Edinburgh EH9 3HJ, UK
- ¹⁵Perimeter Institute for Theoretical Physics, 31 Caroline St. North, Waterloo, ON N2L 2Y5, Canada
- ¹⁶Department of Physics and Astronomy, Uppsala University, Box 516, SE-751 20 Uppsala, Sweden
- ¹⁷Sub-department of Astrophysics, Department of Physics, University of Oxford, Denys Wilkinson Building, Keble Road, Oxford OX1 3RH, UK and Department of Physics, Lancaster University, Lancaster LA1 4 YB, UK
- ¹⁸Instituto de Astrofísica e Ciências do Espaço, Universidade do Porto, CAUP, Rua das Estrelas, P-4150-762 Porto, Portugal
- ¹⁹Departamento de Física e Astronomia, Faculdade de Ciências, Universidade do Porto, Rua do Campo Alegre, 687, P-4169-007 Porto, Portugal
- ²⁰Fermi National Accelerator Laboratory, PO Box 500, Batavia, IL 60510, USA
- ²¹Institute of Cosmology and Gravitation, University of Portsmouth, Portsmouth, PO1 3FX, UK
- ²²Department of Physics & Astronomy, University College London, Gower Street, London, WC1E 6BT, UK
- ²³Centro de Investigaciones Energéticas, Medioambientales y Tecnológicas (CIEMAT), E-28040 Madrid, Spain
- ²⁴Laboratório Interinstitucional de e-Astronomia - LIneA, Rua Gal. José Cristino 77, Rio de Janeiro, RJ-20921-400, Brazil
- ²⁵Department of Astronomy, University of Illinois at Urbana-Champaign, 1002 W. Green Street, Urbana, IL 61801, USA
- ²⁶National Center for Supercomputing Applications, 1205 West Clark St., Urbana, IL 61801, USA
- ²⁷Institut de Física d'Altes Energies (IFAE), The Barcelona Institute of Science and Technology, Campus UAB, E-08193 Bellaterra (Barcelona), Spain
- ²⁸Institut d'Estudis Espacials de Catalunya (IEEC), E-08034 Barcelona, Spain
- ²⁹Institute of Space Sciences (ICE, CSIC), Campus UAB, Carrer de Can Magrans, s/n, E-08193 Barcelona, Spain
- ³⁰Observatório Nacional, Rua Gal. José Cristino 77, Rio de Janeiro, RJ-20921-400, Brazil
- ³¹Department of Physics, IIT Hyderabad, Kandi, Telangana 502285, India
- ³²Excellence Cluster Origins, Boltzmannstr. 2, D-85748 Garching, Germany
- ³³Faculty of Physics, Ludwig-Maximilians-Universität, Scheinerstr. 1, -D81679 Munich, Germany
- ³⁴Kavli Institute for Cosmological Physics, University of Chicago, Chicago, IL 60637, USA
- ³⁵Instituto de Física Teórica UAM/CSIC, Universidad Autonoma de Madrid, E-28049 Madrid, Spain
- ³⁶Department of Physics, Stanford University, 382 Via Pueblo Mall, Stanford, CA 94305, USA

³⁷*Center for Cosmology and Astro-Particle Physics, The Ohio State University, Columbus, OH 43210, USA*

³⁸*Department of Physics, The Ohio State University, Columbus, OH 43210, USA*

³⁹*Harvard-Smithsonian Center for Astrophysics, Cambridge, MA 02138, USA*

⁴⁰*Department of Astronomy/Steward Observatory, University of Arizona, 933 North Cherry Avenue, Tucson, AZ 85721-0065, USA*

⁴¹*Australian Astronomical Optics, Macquarie University, North Ryde, NSW 2113, Australia*

⁴²*Departamento de Física Matemática, Instituto de Física, Universidade de São Paulo, CP 66318, São Paulo, SP, 05314-970, Brazil*

⁴³*George P. and Cynthia Woods Mitchell Institute for Fundamental Physics and Astronomy, and Department of Physics and Astronomy, Texas A&M University, College Station, TX 77843, USA*

⁴⁴*Department of Astrophysical Sciences, Princeton University, Peyton Hall, Princeton, NJ 08544, USA*

⁴⁵*Institució Catalana de Recerca i Estudis Avançats, E-08010 Barcelona, Spain*

⁴⁶*School of Physics and Astronomy, University of Southampton, Southampton, SO17 1BJ, UK*

⁴⁷*Instituto de Física Gleb Wataghin, Universidade Estadual de Campinas, 13083-859, Campinas, SP, Brazil*

⁴⁸*Computer Science and Mathematics Division, Oak Ridge National Laboratory, Oak Ridge, TN 37831*

⁴⁹*Argonne National Laboratory, 9700 South Cass Avenue, Lemont, IL 60439, USA*

⁵⁰*Cerro Tololo Inter-American Observatory, National Optical Astronomy Observatory, Casilla 603, La Serena, Chile*

⁵¹*Max Planck Institute for Extraterrestrial Physics, Giessenbachstrasse, D-85748 Garching, Germany*

This paper has been typeset from a \TeX/L\AA\TeX file prepared by the author.