

# Effects of acute sleep loss on diurnal plasma dynamics of CNS health biomarkers in young men

Christian Benedict, PhD, Kaj Blennow, MD, PhD, Henrik Zetterberg, MD, PhD, and Jonathan Cedernaes, MD, PhD

*Neurology*® 2020;94:1-9. doi:10.1212/WNL.0000000000008866

## Correspondence

Dr. Cedernaes  
jonathan.cedernaes@medsci.uu.se

## Abstract

### Objective

Disrupted sleep increases CSF levels of tau and  $\beta$ -amyloid ( $A\beta$ ) and is associated with an increased risk of Alzheimer disease (AD). Our aim was to determine whether acute sleep loss alters diurnal profiles of plasma-based AD-associated biomarkers.

### Methods

In a 2-condition crossover study, 15 healthy young men participated in 2 standardized sedentary in-laboratory conditions in randomized order: normal sleep vs overnight sleep loss. Plasma levels of total tau (t-tau),  $A\beta_{40}$ ,  $A\beta_{42}$ , neurofilament light chain (NfL), and glial fibrillary acidic protein (GFAP) were assessed using ultrasensitive single molecule array assays or ELISAs, in the fasted state in the evening prior to, and in the morning after, each intervention.

### Results

In response to sleep loss (+17.2%), compared with normal sleep (+1.8%), the evening to morning ratio was increased for t-tau ( $p = 0.035$ ). No changes between the sleep conditions were seen for levels of  $A\beta_{40}$ ,  $A\beta_{42}$ , NfL, or GFAP (all  $p > 0.10$ ). The AD risk genotype rs4420638 did not significantly interact with sleep loss-related diurnal changes in plasma levels of  $A\beta_{40}$  or  $A\beta_{42}$  ( $p > 0.10$ ). Plasma levels of  $A\beta_{42}$  (-17.1%) and GFAP (-12.1%) exhibited an evening to morning decrease across conditions ( $p < 0.05$ ).

### Conclusions

Our exploratory study suggests that acute sleep loss results in increased blood levels of t-tau. These changes provide further evidence that sleep loss may have detrimental effects on brain health even in younger individuals. Larger cohorts are warranted to delineate sleep vs circadian mechanisms, implications for long-term recurrent conditions (e.g., in shift workers), as well as interactions with other lifestyle and genetic factors.

---

From the Departments of Neuroscience (C.B., J.C.) and Medical Sciences (J.C.), Uppsala University; Clinical Neurochemistry Laboratory (K.B., H.Z.), Sahlgrenska University Hospital; Department of Psychiatry and Neurochemistry (K.B., H.Z.), Institute of Neuroscience and Physiology, the Sahlgrenska Academy at the University of Gothenburg, Mölndal, Sweden; Department of Neurodegenerative Disease (H.Z.), UCL Institute of Neurology; and UK Dementia Research Institute at UCL (H.Z.), London, UK.

Go to [Neurology.org/N](https://www.neurology.org/N) for full disclosures. Funding information and disclosures deemed relevant by the authors, if any, are provided at the end of the article.

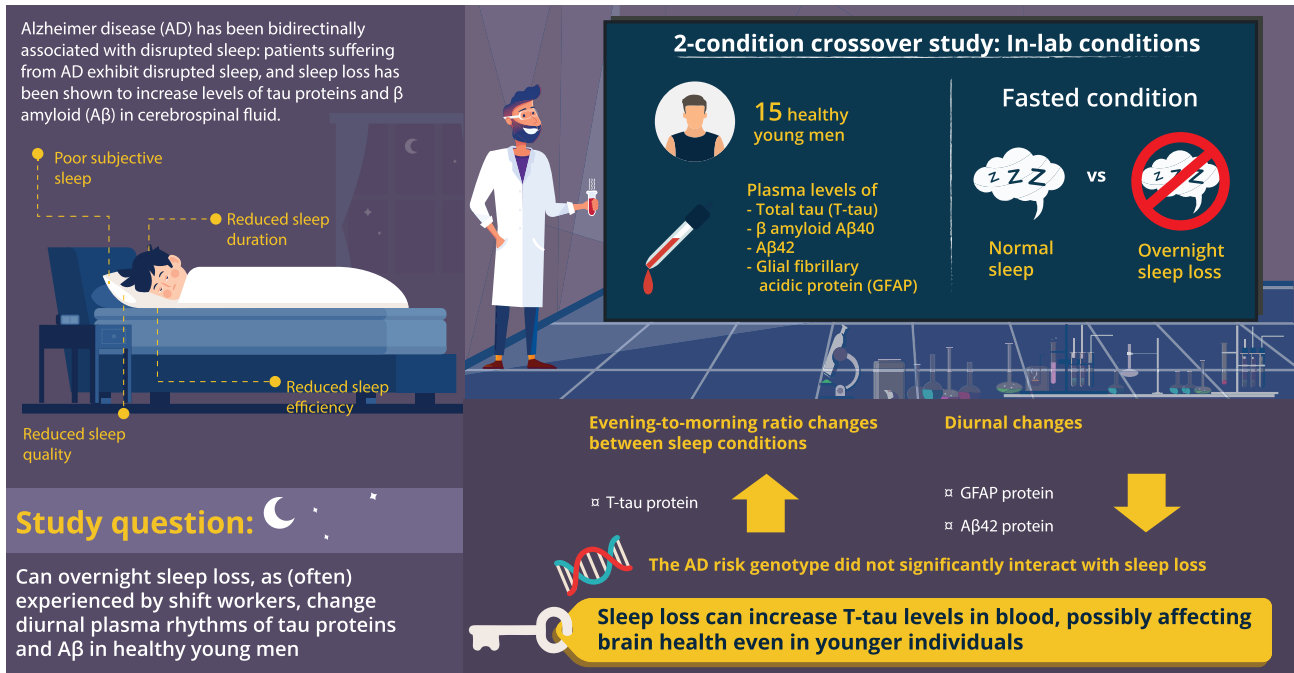
The Article Processing Charge was funded by the Swedish Research Council.

This is an open access article distributed under the terms of the Creative Commons Attribution License 4.0 (CC BY), which permits unrestricted use, distribution, and reproduction in any medium, provided the original work is properly cited.

## Glossary

**A $\beta$**  =  $\beta$ -amyloid; **AD** = Alzheimer disease; **BF** = Bayes factor; **GFAP** = glial fibrillary acid protein; **NfL** = neurofilament light chain; **SNP** = single nucleotide polymorphism; **t-tau** = total tau.

### Effects of Acute Sleep Loss on Diurnal Plasma Protein Dynamics in Young Men



doi:10.1212/WNL.00000000000008866  
Copyright © 2019 American Academy of Neurology

Neurology®

Whereas the importance of sleep for survival and cognitive performance has been recognized and studied for over a century,<sup>1,2</sup> only during the last decade has research begun to mechanistically unveil the bidirectional relationship between sleep and long-term health of the CNS.<sup>3</sup> The most common form of dementia, Alzheimer disease (AD), is hallmarked by the pathologic accumulation of both extracellular  $\beta$ -amyloid ( $A\beta$ ) and intracellular tau proteins in amyloid plaques and neurofibrillary tangles, respectively. AD has been associated with poor subjective sleep, as well as reduced sleep duration, sleep quality, and efficiency, in what appears to constitute a bidirectional relationship.<sup>3-6</sup> As such, this can be speculated to be able to develop into a cycle.<sup>3</sup> Even so, there is also evidence to suggest that disrupted sleep as in obstructive sleep apnea does not increase the risk of cognitive decline,<sup>7</sup> prompting the need for more experimental and longitudinal studies.

In humans, acute sleep loss increases levels of  $A\beta$  species and total tau (t-tau) in CSF.<sup>3,8</sup> Furthermore, patients with obstructive sleep apnea exhibit increased  $A\beta$  levels in plasma, as well as higher levels of phosphorylated tau.<sup>9</sup> The underlying mechanism may be a reduced functionality of the glymphatic system, which in mice has been shown to primarily function during sleep, to increase clearance of interstitial metabolites

such as  $A\beta$  peptides from the brain parenchyma.<sup>3</sup> Furthermore, sustained wakefulness as occurs during jet lag, shift work, and chronic sleep loss results in increased duration of the time when neurons are firing at a higher frequency, and neuronal activity is known to increase local CNS production or release of  $A\beta$  and tau,<sup>3,8</sup> demonstrating an intricate link between neuronal metabolic state and both the production and clearance of the key molecular substrates in the pathogenesis of AD.

Several blood-based AD biomarkers exhibit strong correlations with CSF levels,<sup>10</sup> and may thus be of practical use for clinical purposes. As of yet, it is unknown whether observed increases in biomarkers such as tau in CSF also are reflected by altered blood levels. It is also unclear whether such biomarkers exhibit the same diurnal pattern in blood in response to sleep loss, and whether these dynamics depend on genetic factors.<sup>8</sup>

Against this background, our aim was to assess the effect of acute sleep loss on diurnal plasma rhythms of t-tau and  $A\beta$  species in healthy young humans. Furthermore, as previous studies have provided evidence for disruption of both glial and neuronal cells in response to experimental sleep loss,<sup>11</sup> we also aimed to investigate biomarkers of neuroaxonal injury. We thus also assessed levels of neurofilament light chain (NfL), a protein found in axons that is released following white

matter injury and degeneration, as well as glial fibrillary acid protein (GFAP), which also is elevated in AD.<sup>10</sup>

## Methods

Eligible participants were invited during 2012–2013 to participate in a within-subject crossover design study. Seventeen participants were deemed eligible and chose to participate in the study. Out of these, one participant was unable to complete his second session due to scheduling conflicts. Another participant was unable to sleep during his sleep session and was therefore excluded. Thus, 15 healthy normal-weight men (age  $22.3 \pm 0.5$  years, body mass index  $22.6 \pm 0.5$  kg/m<sup>2</sup>, as reported in reference 12) participated in both nighttime interventions, in randomized order, i.e., a night of normal sleep compared with a night of sleep loss. Study size was chosen based on similar studies in the field of biomarker analysis related to neuronal health (c.f. references 11 and 13) and the field of sleep metabolism (c.f. reference 14).

Prior to enrollment, participants answered questions regarding their general, metabolic, neurologic, and psychiatric health, as well as the potential use of medications and drugs. This was subsequently followed up by interview (J.C.). Only self-reportedly healthy participants, who were free from chronic medication or current or prior drug use, were included. Participants furthermore had to have a self-reported sleep duration of 7–9 hours per night, have good sleep quality (Pittsburgh sleep quality index  $\leq 5$ ), and be regular breakfast eaters. Exclusion criteria were extreme chronotypes (assessed by the Morningness-Eveningness Questionnaire), any form of smoking, nicotine use, or alcohol intake greater than 5 standard units per week. Additional exclusion criteria included shift work within the last 6 months or traveling across 1 or more time zones within 3 weeks of scheduled participation in the study or between study sessions.

The week prior to participating in each session, participants maintained sleep/wake diaries, which confirmed that participants had the same amount of sleep the week prior to each condition (as reported in reference 12). Furthermore, participants slept a single night in the laboratory within 2 weeks of participating in their first session, in order to ensure habituation to the laboratory conditions. Participants arrived at the laboratory at Uppsala University Biomedical Center 2 evenings prior to the overnight intervention. While in the laboratory, participants stayed in their own individual rooms with room lights on ( $\sim 250$  lux in the direction of gaze when standing or sitting), were continuously monitored, and were instructed to remain sedentary apart from 2 supervised 15-minute-long walks during the morning and afternoon. Throughout each in-laboratory day, 3 isocaloric meals (at 08:00, 13:00, and 20:00 hours) were provided, and each meal had to be consumed within 20 minutes. After a baseline day and night in our laboratory, blood was taken in the fasted condition at 19:30 hours. Following the scheduled dinner at 20:00 hours,

the nighttime intervention took place between 22:30 and 07:00 hours. Participants were unaware of the experimental overnight condition until being informed at 21:00 hours of each intervention night. In the sleep condition, participants were allowed to sleep 22:30–07:00 hours in 0 lux. During this, sleep was recorded by EEG, EMG, and electrooculography, which was subsequently scored according to standardized criteria by a scorer blinded to the study order and study hypothesis (sleep session sleep duration:  $483 \pm 3$  minutes [as reported in reference 12], median 485.5, range 460–490 minutes; sleep efficiency: median 96.1, range 93%–99%). In the sleep loss condition, lights were kept on during the 22:30–07:00 hours intervention period, and participants were bed-restricted to approximate activity levels during the corresponding sleep condition. During the continued wakefulness, participants sat in semirecumbent position in their bed with their backs supported, and were allowed to play board games, watch movies, and engage in discussions. During this time, participants were under continued constant direct visual supervision by the experimental leaders to ensure sustained wakefulness. Furthermore, water but not food intake was allowed, and light levels were kept on at 250 lux in the direction of gaze. The morning following each intervention, blood was once more drawn in the fasted state at 07:30 hours.

## Standard protocol approvals, registrations, and patient consents

The study was approved by the Uppsala regional ethical board (approval 2012/477/1), and all participants provided oral and written informed consent. The study is registered at Clinicaltrials.gov (NCT01800253).

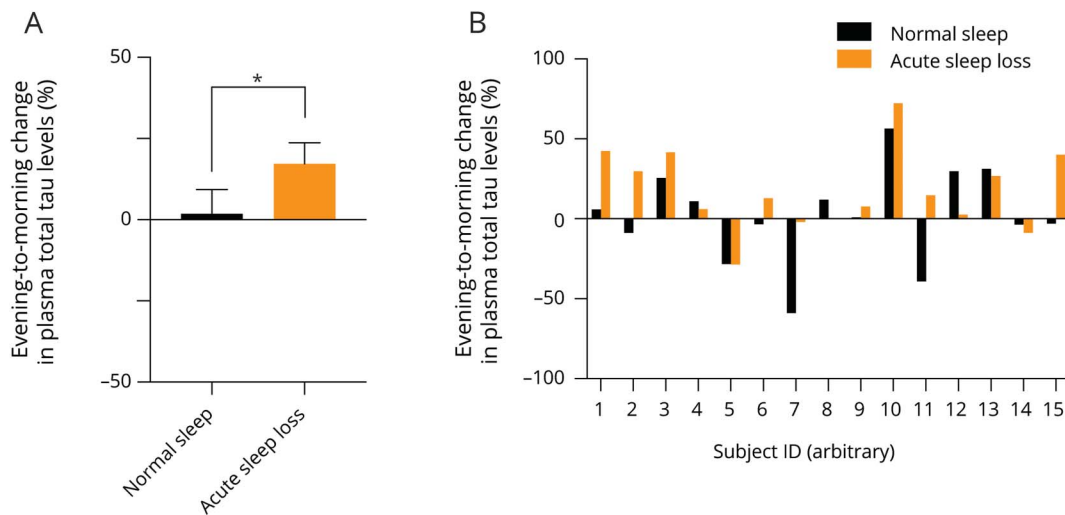
## Plasma separation and biochemical analyses

Blood was drawn into PSTII tubes (BD Sweden, Stockholm), followed by centrifugation (1,300 rcf, 10 minutes, 4°C), and aliquoting of the plasma supernatant that was frozen on dry ice, for subsequent storage at  $-80^{\circ}\text{C}$  until analysis. Plasma levels of t-tau, A $\beta$ 40, and A $\beta$ 42 were analyzed using commercially available ultrasensitive single molecule array (Simoa) assays (Quanterix, Lexington, MA). Plasma NfL levels were determined using an in-house ultrasensitive Simoa assay, as previously described in detail.<sup>15</sup> Each participant's samples were measured in succession to avoid batch effects. All analyses were performed by board-certified technicians, who were experts in biomarker assays and who were blinded to clinical data, using detailed standardized procedures to assure analytical precision.<sup>16</sup>

## Genotyping

The Illumina (San Diego, CA) OmniExpressExome array was used to genotype the participants, followed by analysis with the software PLINK version 1.9 to determine polymorphisms at the genotyping at single nucleotide polymorphism (SNP) rs4420638.<sup>17</sup> The OmniExpressExome array used for genotyping did not contain SNP data for the canonical SNPs (rs7412 and rs429358) used to determine the APOE-specific genotype that has been linked to increased risk of AD, but

**Figure 1** Effect of acute sleep loss on diurnal changes in plasma levels of total tau (t-tau)



(A) Change in plasma levels of t-tau, comparing the percent change from evening at 19:30 hours to the morning at 07:30 hours, between the normal sleep (absolute levels in the evening:  $3.87 \pm 0.52$  pg/mL) and acute sleep loss condition (evening absolute levels:  $3.00 \pm 0.42$  pg/mL) in 15 healthy young men. (B) The evening to morning change in plasma levels of t-tau across individuals, in response to normal sleep (black bars) and acute sleep loss (orange bars) (individuals arbitrarily numbered along the x axis;  $n = 15$ ). \* $p < 0.05$ ; grouped values shown as mean  $\pm$  SEM.

rs4420638 also has been found to reflect an increased risk of AD (in one study noted as a  $\sim 4$  times greater risk<sup>17</sup>).

### Statistics

Prism (v 8.2) was used for all statistical analyses with the exception of Bayes factor (BF), which was calculated in R (v 3.5.1), using the package BayesFactor (v 0.9.12). This computes the BF via Gaussian quadrature, and the default  $r$  scale factor  $\sqrt{2}/2$  was used. We calculated the BF as an alternative statistical approach: a BF of 1 is seen as no evidence for the  $H_1$  hypothesis; a value of 1–3 or 1/3–1 is seen as anecdotal evidence, 3–10 or 1/3–1/10 as moderate evidence, and 10–30 or 1/10–1/30 as strong evidence. Normal distribution was determined using the Shapiro-Wilk test ( $p > 0.05$ ). As we had large interindividual differences in absolute levels of the analyzed factors, we opted to use ratios between evening and morning values, and then compared these ratios between our 2 sleep conditions. For normally distributed data, the paired Student  $t$  test and Pearson correlations were used. The morning vs evening difference across conditions of A $\beta$ 40, A $\beta$ 42, and GFAP levels were analyzed using the one-sample Student  $t$  test (parametric data) or the Wilcoxon signed rank test (nonparametric data) for the full set of samples (pooled for both experimental conditions). The genotype effect for evening vs morning changes in A $\beta$ 40 and A $\beta$ 42 levels between the sleep conditions in carriers vs noncarriers of rs4420638 was assessed by determining the genotype  $\times$  sleep condition interaction in a 2-way analysis of variance. We were able to determine plasma levels across the 2 timepoints and 2 conditions for GFAP in 15/15 participants, t-tau in 13/15 participants (2 participants had single missing values), NfL in 13/15 participants (2 participants had consistent plasma NfL levels  $>100$  times greater

than the other participants' averages in NfL, indicating presence of heterophilic antibodies), A $\beta$ 40 in 9/15 participants (1 participant was excluded due to more than a single missing value), and A $\beta$ 42 in 11/15 participants (1 participant was excluded due to more than a single missing value). When only one value was missing for a given individual and analyte, data were imputed, corresponding to 2 single timepoints for t-tau, 5 for A $\beta$ 40, 3 for A $\beta$ 42, 0 for NfL, and 0 for GFAP.

### Data sharing statement

Anonymized original data will be shared by request from any qualified investigator after inquiry. This includes raw analytical parameters, files used for statistics, and R code, but not the study protocol.

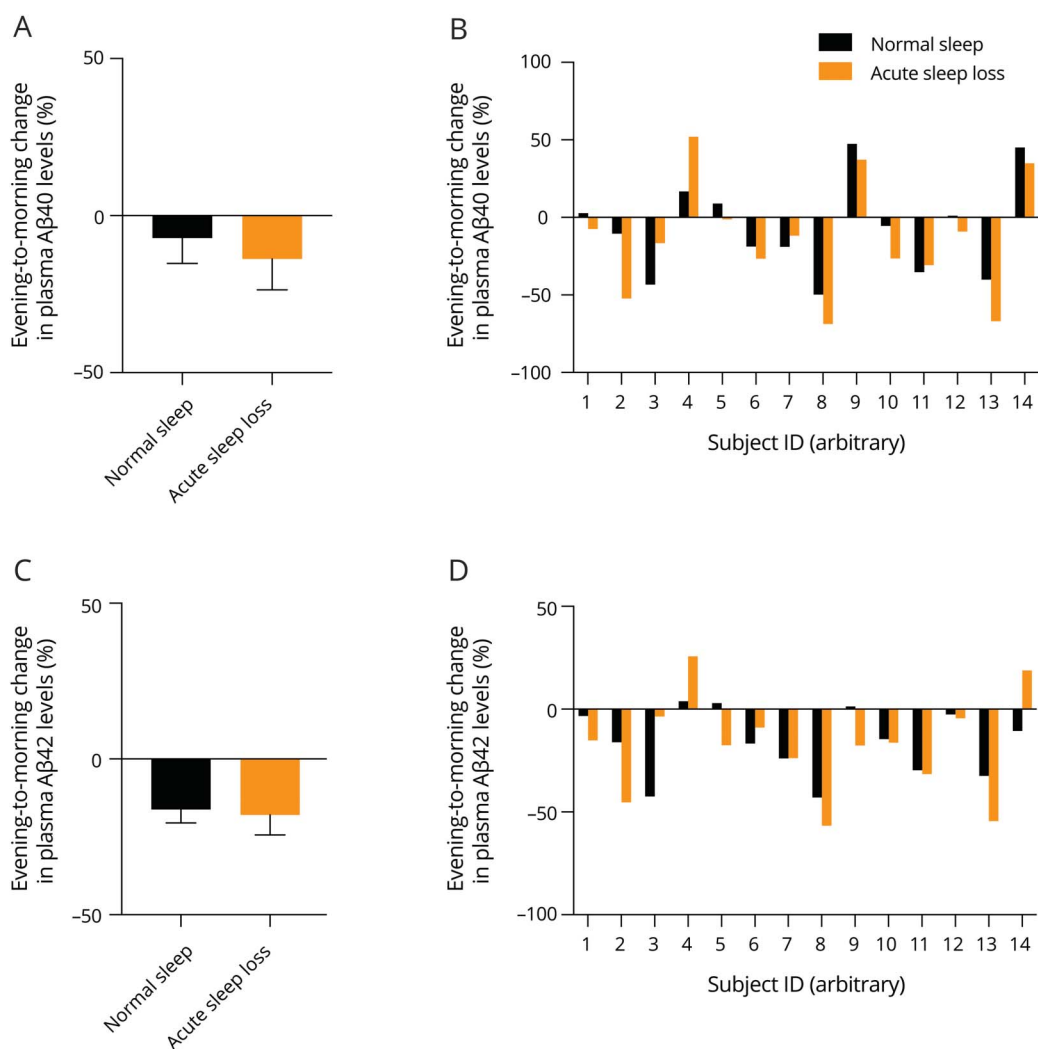
## Results

We first assessed evening to morning changes across sleep conditions for levels of t-tau protein. Similar to recent findings based on CSF sampling under conditions of acute sleep loss,<sup>8</sup> the evening to morning change in average plasma levels of tau exhibited an increase following sleep loss, compared with normal sleep ( $p = 0.0345$ ; BF = 2.05) (figures 1 and 2, A and B).

We next assessed whether sleep loss would alter overnight changes in plasma levels of A $\beta$  species, but observed no significant evening to morning changes in A $\beta$ 40 ( $p = 0.24$ ; BF = 0.51) or A $\beta$ 42 ( $p = 0.76$ ; BF = 0.28) following acute sleep loss compared with sleep (figure 2, A–D). Given that certain SNPs in apolipoprotein genes have been linked to an increased risk of AD, we also set out to interrogate whether those at



**Figure 2** Effect of acute sleep loss on diurnal changes in plasma levels of amyloid  $\beta$ 40 (A $\beta$ 40) and amyloid  $\beta$ 42 (A $\beta$ 42)



(A) Change in plasma levels of A $\beta$ 40 from evening to 12 hours later in the morning (expressed as % change), after each of 2 overnight interventions, i.e., normal sleep (absolute levels in the evening:  $29.9 \pm 2.3$  pg/mL) and acute sleep loss (evening:  $28.3 \pm 2.3$  pg/mL) ( $n = 14$ ). (B) Data from A shown at the individual level (participants arbitrarily numbered along the x axis), as the evening to morning change, in response to normal sleep (black bars) and acute sleep loss (orange bars). (C) Corresponding evening to morning change at the group level for plasma levels of A $\beta$ 42 ( $n = 14$ ), across normal sleep (evening:  $2.63 \pm 0.13$  pg/mL) and sleep loss (evening:  $2.98 \pm 0.16$  pg/mL); also shown in D at the individual level (as in B).

increased genetic risk of AD also have altered A $\beta$  dynamics in response to sleep loss, a largely unexplored area of inquiry.<sup>18</sup> In this context, the G and G/G variant of the SNP rs4420638 (within the apolipoprotein gene *APOC1*) have been associated with an increased risk of AD,<sup>17,19</sup> by being in linkage disequilibrium with the canonical AD risk gene *APOE*,<sup>17</sup> and thus affecting metabolism of A $\beta$  species. However, we found no significant interaction effects between the genotypes (7 of 14 participants were G or G/G carriers) of rs4420638 and the evening to morning change in plasma levels of A $\beta$ 40 ( $p = 0.63$ ) or A $\beta$ 42 ( $p = 0.37$ ) in response to sleep loss compared with normal sleep.

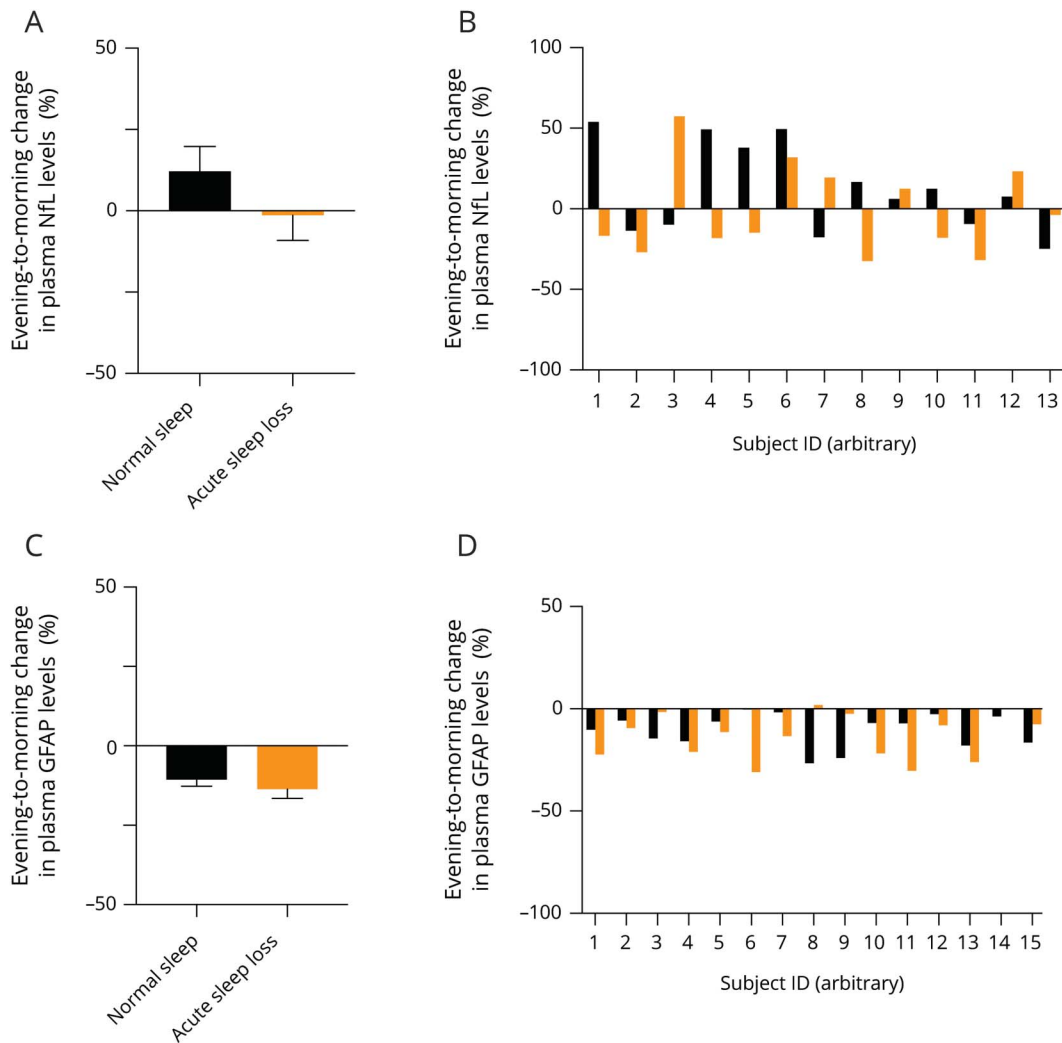
Previous studies have provided evidence for changes in sleep measures and AD biomarkers (such as for tau, c.f. reference 5). We therefore also assessed whether sleep efficiency in the

sleep condition correlated with the overnight change in plasma levels of t-tau, A $\beta$ 40, or A $\beta$ 42, but found no evidence in support of this notion in our smaller set of individuals (all  $r < 0.42$ ;  $p > 0.10$ ).

We furthermore did not observe any significant differences between the 2 experimental conditions when we compared how they affected the evening to morning change in plasma levels of the neuroaxonal damage markers NfL ( $p = 0.26$ ; BF = 0.49) (figure 3, A and B) or GFAP ( $p = 0.48$ ; BF = 0.33) figure 3, C and D).

Given that we observed uniform evening to morning directionalities at the group level across the experimental conditions for A $\beta$ 40, A $\beta$ 42, and GFAP in plasma, we proceeded to assess diurnal changes in plasma levels of these biomarkers.

**Figure 3** Effect of acute sleep loss on diurnal changes in plasma levels of neurofilament light chain (NfL) and glial fibrillary acid protein (GFAP)



(A) Evening to morning change (expressed as % change) in plasma levels of NfL after normal sleep (absolute levels in the evening:  $14.9 \pm 2.0$  pg/mL), and acute sleep loss (evening:  $15.2 \pm 2.3$  pg/mL) ( $n = 13$ ). (B) Individual evening to morning changes across the studied participants in plasma levels of NfL in response to normal sleep (black bars) or acute sleep loss (orange bars). (C) Change in plasma levels of GFAP in evening to morning after normal sleep (evening:  $120 \pm 50$  pg/mL) and acute sleep loss (evening:  $115 \pm 42$  pg/mL). (D) Individual evening to morning changes in plasma levels of GFAP in response to normal sleep and acute sleep loss ( $n = 15$ ). Grouped values shown as mean  $\pm$  SEM.

Whereas we noted no diurnal changes in plasma levels of A $\beta$ 40 ( $p = 0.107$ ; BF = 0.68) (figure 4A), we noted significant evening to morning decreases in A $\beta$ 42 ( $-17.1\%$ ;  $p < 0.0001$ ; BF = 223) and GFAP in plasma ( $-12.1\%$ ;  $p < 0.0001$ ; BF = 104,161) (figure 4B-C). Altogether, these findings provide evidence that certain AD biomarkers exhibit diurnal changes that are sleep-independent.

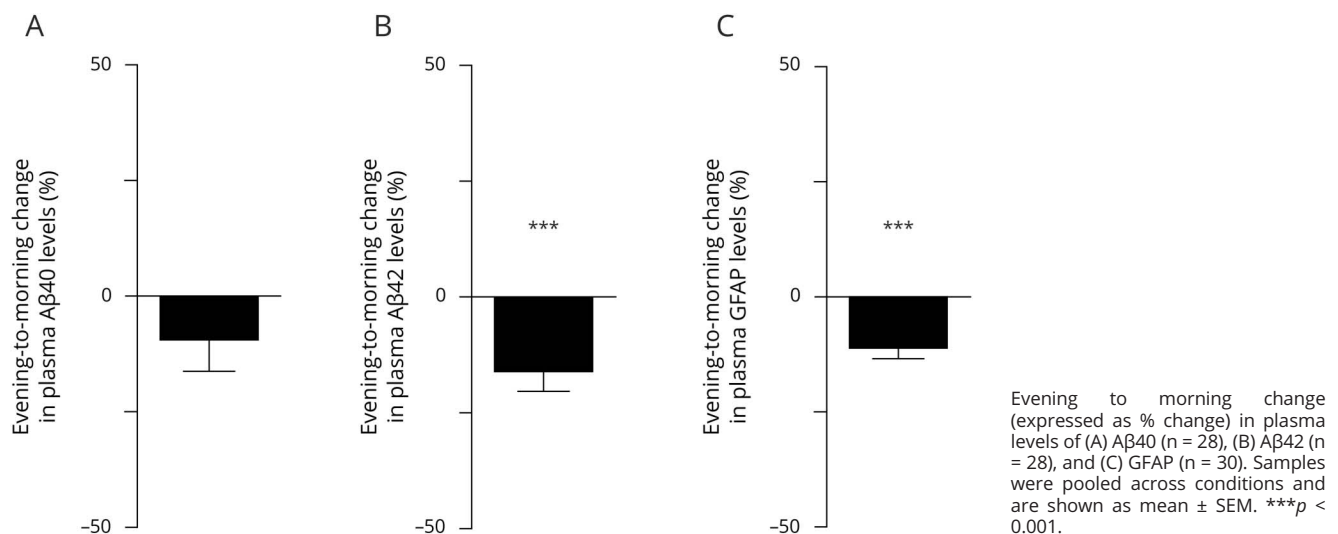
## Discussion

Our present findings suggest that acute sleep loss—as often experienced in shift work, for example—results in an evening to morning increase in plasma levels of t-tau, without concomitant changes in plasma levels of other biomarkers of AD,

such as A $\beta$  species. Whether the changes in t-tau in plasma in response to sleep loss reflect increased neuronal activity during sustained wakefulness, or alternatively, disrupted central or peripheral clearance, is unclear.

A recent study described increased levels of tau in CSF of older adults undergoing overnight wakefulness.<sup>8</sup> Our results suggest that this change in t-tau levels also is detectable at the peripheral level following acute sleep loss. A previous study by us, that is similar to the current one, found that acute sleep loss resulted in increased blood levels of markers of neuronal and astroglial injury.<sup>11</sup> It is therefore possible that increased t-tau levels in blood could indicate sustained high neuronal activity during prolonged wakefulness,<sup>20</sup> but it also may indicate increased neuronal damage under such conditions.<sup>21,22</sup>

**Figure 4** Analysis of diurnal changes across sleep conditions in plasma levels of amyloid  $\beta$ 40 (A $\beta$ 40), amyloid  $\beta$ 42 (A $\beta$ 42), and glial fibrillary acid protein (GFAP)



This may result in increased leakage of tau into the interstitial fluid and subsequently into blood.<sup>22</sup>

Establishing how peripheral biomarkers of AD are controlled by diurnal vs sleep-related mechanisms can provide insight into the bidirectional sleep–AD relationship. For instance, a recent study in older participants has demonstrated that each SD increase in plasma tau is associated with a 35% greater risk of AD during subsequent follow-up.<sup>23</sup> An important next step will be to firmly establish whether changes in tau related to sleep and its characteristics, as well as time of day, can be taken into account to assess future risk of AD. This could include the specific goal of establishing whether t-tau in plasma can be utilized to assess how participants with chronically poor sleep may be at a higher risk for clinically relevant neurodegeneration. Indeed, pathologic accumulation of A $\beta$  and tau begins decades prior to clinical onset of AD, making early diagnosis and intervention of critical importance.

Previous studies have demonstrated that levels of A $\beta$  exhibit a diurnal pattern in both blood and CSF, and that there exists a lag between the acrophase of each of these rhythms, such that the rhythm in plasma is delayed by about 6 hours.<sup>24</sup> Clearance of A $\beta$  across brain parenchyma has also been demonstrated to be highly dependent on the glymphatic system, such that A $\beta$  clearance is twofold faster during sleep compared with wakefulness in mice.<sup>25</sup> Furthermore, a study of 8 men of age 30–60 years found that scheduled sleep loss resulted in a  $\sim$ 30% increase in CSF levels of A $\beta$ 38, A $\beta$ 40, and A $\beta$ 42.<sup>26</sup> Overnight wakefulness has furthermore been reported to result in increased levels of A $\beta$  in thalamus and hippocampus of 20 participants age 22–72 years, as assessed by PET, using the AD-specific tracer <sup>18</sup>F-florbetaben.<sup>18</sup>

However, another study found no changes in the plasma A $\beta$ 42/A $\beta$ 40 ratio following 1 night of sleep loss in healthy humans who were not bed-restricted during sleep loss.<sup>11</sup> With these previous studies in mind, our lack of findings at the peripheral level for overnight changes in A $\beta$  peptides in response to sleep loss suggests that peripheral measurements of A $\beta$  biomarkers may be less accurate in reflecting acute changes that occur in the CNS in response to sleep loss.

Another biomarker of relevance is NfL, levels of which increase in CSF of patients with AD and track well with cortical thinning and thus also with clinical progression of AD.<sup>10</sup> These changes also parallel changes in blood.<sup>10</sup> Given that we observed no sleep loss–induced changes in NfL (the most well-established neuronal injury marker) or GFAP, this argues against the possibility that acute sleep loss would also result in acute neuroaxonal injury. However, given that chronic sleep loss has also been independently associated with cognitive decline,<sup>27</sup> it will be of interest to establish whether chronic or recurrent bouts of acute sleep loss affect plasma or CSF levels of NfL, to gain further insight into the mechanisms by which recurring sleep loss over time not only can promote neurodegeneration but also impair cognitive health.

The highly standardized study protocol utilized herein ensured that activity, meal, and light exposure were kept identical across the studied conditions, but the present study only included a small sample size of homogeneous, young men, all of whom were of normal weight and of good health. Given the small sample size, we cannot exclude the possibility that we were underpowered to detect smaller differences, such as diurnal or sleep loss–induced differences in levels of NfL, or differences related to the AD risk genotype that was investigated herein. This may especially have been the case as we—similar to that

previously reported by Lucey et al.<sup>26</sup>—observed overall large interindividual differences for the investigated analytes. Furthermore, even though changes in plasma track changes in CSF for markers such as NfL,<sup>10</sup> the absence of CSF sampling in our study precludes any assessment regarding how these markers may have been altered in CSF under the present study conditions. It is also important to note that we cannot rule out that peripheral mechanisms such as increased breakdown may have contributed to the lack of sleep loss–related changes in peripheral plasma levels, such as for A $\beta$ 42. Studies aimed at examining the dynamic relationship between CSF and plasma levels of A $\beta$  species under various conditions of sleep loss will hopefully be able to establish to what extent peripheral clearance of A $\beta$  species is affected by disrupted sleep/wake cycles. Of equal importance will be to establish how the acute changes we and others have observed in response to acute sleep loss relate to recurrent bouts of prolonged wakefulness (e.g., in shift workers), and similarly, to the more long-term associations that have been established by us and others between sleep disruption and future risk of AD.<sup>4</sup> Finally, given that we only collected blood samples in the early evening and morning, it is possible that additional blood sampling may reveal additional dynamics of how CNS health biomarkers are affected by sleep loss and circadian misalignment.

Our observation of altered evening to morning levels of t-tau in blood in response to sleep loss is intriguing in light of our previous findings that demonstrated increased blood levels of neuron-specific enolase and S100 calcium-binding protein B after 1 night of sleep loss, also in healthy young individuals.<sup>11</sup> Thus, our findings indicate that even at a young age, sleep loss may alter CNS processes in a direction that promotes neuronal damage and AD pathogenesis. It should be noted that another study found no changes in AD biomarkers in CSF, including A $\beta$  species, t-tau, and phospho-tau, following recurrent partial sleep restriction (to 4 hours/night) in healthy young individuals.<sup>28</sup> This suggests that changes may depend on a variety of factors, such as participant characteristics (including age), as well as the type, acuteness, and cumulative duration of sleep loss. Indeed, another study found that specific disruption of slow-wave sleep (which is largely conserved under conditions of partial sleep restriction) resulted in increased levels of A $\beta$ 40 in CSF.<sup>29</sup> Slow-wave sleep declines with advanced age, and separately, reduced non-REM sleep (which encompasses slow-wave sleep) has been associated with increased CNS tau pathology.<sup>5</sup> Another potential mechanism may be that conferred by genetic factors, and at present it is poorly understood whether genetic risk factors that alter metabolism of A $\beta$  species may increase AD pathogenesis by interacting with sleep and circadian mechanisms.

Our study only examined healthy young men without any long-term or recent history of shift work. Our findings may therefore not translate to women, older individuals, or people who are already at risk of adverse effects associated with disrupted and misaligned sleep. This includes individuals who

already are carrying out shift work, as well as patients with obesity or diabetes.<sup>30,31</sup>

Further studies are warranted to assess whether the changes we observed are modulated by factors such as measures of sleep quality, age, or metabolic disease,<sup>31</sup> and whether there also are protective genetic factors that may further modulate how sleep loss may promote neurodegenerative processes. Indeed, given that a variety of lifestyle factors other than sleep are able to modulate the risk of dementia and AD,<sup>32</sup> it will now be important to disentangle how such lifestyle factors interact with sleep/wake patterns to modify the long-term risk of AD, with the goal of improving public health and reducing the burden of AD to society. For instance, it can be argued that prophylactic measures to lower the risk of AD—especially in groups at higher risk such as those with genetic predisposition to develop AD—should also include sleep hygiene.

Taken together with previous studies that also have examined changes in AD biomarkers in CSF,<sup>8,13</sup> our findings provide mechanistic insight into how disruption of sleep or circadian rhythms may lead to an increased risk of cognitive decline and AD.<sup>3,27</sup> Our exploratory findings uncover that acute sleep loss results in altered diurnal plasma dynamics of a key pathogenic biomarker of AD. We also find preliminary evidence for diurnal changes in biomarkers utilized in neurodegenerative analyses, suggesting that care should be taken when considering the time of day that such analytes are sampled. Our results are based on a fairly small sample size and only focused on changes following an acute, yet highly controlled, sleep intervention. However, taken together with previous findings, our results provide further preliminary evidence to suggest that even in young, healthy individuals, sleep is not only of relevance for cognitive performance, but also may matter for long-term brain health. Given the long latent onset of AD and the accumulating evidence for how disrupted sleep/wake rhythms can impair brain health in young individuals, further longitudinal studies and randomized controlled trials are warranted to establish whether curtailed, disrupted, or misaligned sleep increase the risk of dementia. Altogether, this could provide key insight into whether interventions targeting sleep should be initiated at an early age to reduce the risk of dementia and AD.

### Author contributions

J.C. designed the study, collected the data, and wrote the protocol with input from C.B., K.B., H.Z., and J.C. conducted the analyses. C.B., K.B., H.Z., and J.C. interpreted the data. J.C. wrote the original draft, and all authors contributed to review and editing. J.C. had full access to all the data in the study and takes responsibility for the integrity of the data and the accuracy of the data analysis.

### Acknowledgment

The authors thank Jon Brandell, Olof Ros, and Jan-Erik Broman for conducting the experiments and the participants for their participation. Genotyping was performed by the



SNP&SEQ Technology Platform in Uppsala. The facility is part of NGI Sweden and Science for Life Laboratory.

## Study funding

Supported by the Swedish Research Council (J.C. 2014–6888; C.B. 2015–03100), Åke Wiberg Foundation (M17-0248), the Bissen Brainwalk Foundation (J.C.), the Erik, Karin and Gösta Selander Foundation (J.C.), the Fredrik och Ingrid Thuring's Foundation (J.C.), the Göran Gustafsson Foundation (J.C.), the Lars Hiertas Minne Foundation (J.C.), the Mats Kleberg Foundation (J.C.), the Magnus Bergvalls Foundation, the Novo Nordisk Foundation (C.B.), the Swedish Medical Research Society (J.C.), the Swedish Society for Medicine (J.C.), the Swedish Brain Foundation (J.C. FO2018-0340, K.B. FO2017-0243), The Torsten Söderberg Foundation (J.C.), the Swedish Alzheimer Foundation (K.B. AF-742881), the Wallenberg Academy (H.Z.), the Torsten Söderberg Professorship in Medicine at the Royal Swedish Academy of Sciences (K.B.), the Swedish state (K.B. ALFGBG-715986), the European Research Council, and the Dementia Research Institute at UCL.

## Disclosure

C. Benedict reports no disclosures relevant to the manuscript. K. Blennow has served as a consultant or on advisory boards for Alector, Alzheon, CogRx, Biogen, Lilly, Novartis, and Roche Diagnostics, and is a cofounder of Brain Biomarker Solutions in Gothenburg AB, a GU Venture-based platform company at the University of Gothenburg, all unrelated to the work presented in this article. H. Zetterberg has served on scientific advisory boards for Roche Diagnostics, Wave, Samumed, and CogRx, and is a cofounder of Brain Biomarker Solutions in Gothenburg AB, a GU Ventures-based platform company at the University of Gothenburg. J. Cedernaes reports no disclosures relevant to the manuscript. Go to [Neurology.org/N](https://Neurology.org/N) for full disclosures.

## Publication history

Received by *Neurology* March 20, 2019. Accepted in final form September 27, 2019.

## References

1. Bentivoglio M, Grassi-Zucconi G. The pioneering experimental studies on sleep deprivation. *Sleep* 1997;20:570–576.
2. Jenkins JG, Dallenbach KM. Obliviscence during sleep and waking. *Am J Psychol* 1924;35:605–612.
3. Cedernaes J, Osorio RS, Varga AW, Kam K, Schioth HB, Benedict C. Candidate mechanisms underlying the association between sleep-wake disruptions and Alzheimer's disease. *Sleep Med Rev* 2017;31:102–111.
4. Benedict C, Byberg L, Cedernaes J, et al. Self-reported sleep disturbance is associated with Alzheimer's disease risk in men. *Alzheimers Dement* 2015;11:1090–1097.

5. Lucey BP, McCullough A, Landsness EC, et al. Reduced non-rapid eye movement sleep is associated with tau pathology in early Alzheimer's disease. *Sci Transl Med* 2019;11:eaa6550.
6. Roh JH, Huang Y, Bero AW, et al. Disruption of the sleep-wake cycle and diurnal fluctuation of beta-amyloid in mice with Alzheimer's disease pathology. *Sci Transl Med* 2012;4:150ra122.
7. Lutsey PL, Bengtson LG, Punjabi NM, et al. Obstructive sleep apnea and 15-year cognitive decline: the Atherosclerosis Risk in Communities (ARIC) study. *Sleep* 2016;39:309–316.
8. Holth JK, Fritschi SK, Wang C, et al. The sleep-wake cycle regulates brain interstitial fluid tau in mice and CSF tau in humans. *Science* 2019;363:880–884.
9. Bu XL, Liu YH, Wang QH, et al. Serum amyloid-beta levels are increased in patients with obstructive sleep apnea syndrome. *Sci Rep* 2015;5:13917.
10. Preische O, Schultz SA, Apel A, et al. Serum neurofilament dynamics predicts neurodegeneration and clinical progression in presymptomatic Alzheimer's disease. *Nat Med* 2019;25:277–283.
11. Benedict C, Cedernaes J, Giedraitis V, et al. Acute sleep deprivation increases serum levels of neuron-specific enolase (NSE) and S100 calcium binding protein B (S-100B) in healthy young men. *Sleep* 2014;37:195–198.
12. Cedernaes J, Schonke M, Westholm JO, et al. Acute sleep loss results in tissue-specific alterations in genome-wide DNA methylation state and metabolic fuel utilization in humans. *Sci Adv* 2018;4:eaar8590.
13. Ooms S, Overeem S, Besse K, Rikkert MO, Verbeek M, Claassen JA. Effect of 1 night of total sleep deprivation on cerebrospinal fluid beta-amyloid 42 in healthy middle-aged men: a randomized clinical trial. *JAMA Neurol* 2014;71:971–977.
14. Benedict C, Hallschmid M, Lassen A, et al. Acute sleep deprivation reduces energy expenditure in healthy men. *Am J Clin Nutr* 2011;93:1229–1236.
15. Gisslen M, Price RW, Andreasson U, et al. Plasma concentration of the neurofilament light protein (NFL) is a biomarker of CNS injury in HIV infection: a cross-sectional study. *EBioMedicine* 2016;3:135–140.
16. Palmqvist S, Zetterberg H, Blennow K, et al. Accuracy of brain amyloid detection in clinical practice using cerebrospinal fluid beta-amyloid 42: a cross-validation study against amyloid positron emission tomography. *JAMA Neurol* 2014;71:1282–1289.
17. Coon KD, Myers AJ, Craig DW, et al. A high-density whole-genome association study reveals that APOE is the major susceptibility gene for sporadic late-onset Alzheimer's disease. *J Clin Psychiatry* 2007;68:613–618.
18. Shokri-Kojori E, Wang GJ, Wiers CE, et al. Beta-amyloid accumulation in the human brain after one night of sleep deprivation. *Proc Natl Acad Sci USA* 2018;115:4483–4488.
19. Bertram L, Lange C, Mullin K, et al. Genome-wide association analysis reveals putative Alzheimer's disease susceptibility loci in addition to APOE. *Am J Hum Genet* 2008;83:623–632.
20. Yamada K, Holth JK, Liao F, et al. Neuronal activity regulates extracellular tau in vivo. *J Exp Med* 2014;211:387–393.
21. Zetterberg H, Smith DH, Blennow K. Biomarkers of mild traumatic brain injury in cerebrospinal fluid and blood. *Nat Rev Neurol* 2013;9:201–210.
22. Stukas S, Higgins V, Frndova H, et al. Characterisation of serum total tau following paediatric traumatic brain injury: a case-control study. *Lancet Child Adolesc Health* 2019;3:558–567.
23. Pase MP, Beiser AS, Himali JJ, et al. Assessment of plasma total tau level as a predictive biomarker for dementia and related endophenotypes. *JAMA Neurol* 2019;76:598–606.
24. Huang Y, Potter R, Sigurdson W, et al. Beta-amyloid dynamics in human plasma. *Arch Neurol* 2012;69:1591–1597.
25. Xie L, Kang H, Xu Q, et al. Sleep drives metabolite clearance from the adult brain. *Science* 2013;342:373–377.
26. Lucey BP, Hicks TJ, McLeland JS, et al. Effect of sleep on overnight cerebrospinal fluid amyloid beta kinetics. *Ann Neurol* 2018;83:197–204.
27. Yaffe K, Falvey CM, Hoang T. Connections between sleep and cognition in older adults. *Lancet Neurol* 2014;13:1017–1028.
28. Olsson M, Arlig J, Hedner J, Blennow K, Zetterberg H. Sleep deprivation and cerebrospinal fluid biomarkers for Alzheimer's disease. *Sleep* 2018;41.
29. Ju YS, Ooms SJ, Sutphen C, et al. Slow wave sleep disruption increases cerebrospinal fluid amyloid-beta levels. *Brain* 2017;140:2104–2111.
30. Jauch-Chara K, Schmid SM, Hallschmid M, Born J, Schultes B. Altered neuroendocrine sleep architecture in patients with type 1 diabetes. *Diabetes care* 2008;31:1183–1188.
31. Crane PK, Walker R, Hubbard RA, et al. Glucose levels and risk of dementia. *New Engl J Med* 2013;369:540–548.
32. Andrieu S, Coley N, Lovestone S, Aisen PS, Vellas B. Prevention of sporadic Alzheimer's disease: lessons learned from clinical trials and future directions. *Lancet Neurol* 2015;14:926–944.

# Neurology®

## Effects of acute sleep loss on diurnal plasma dynamics of CNS health biomarkers in young men

Christian Benedict, Kaj Blennow, Henrik Zetterberg, et al.  
*Neurology* published online January 8, 2020  
DOI 10.1212/WNL.00000000000008866

**This information is current as of January 8, 2020**

<b>Updated Information &amp; Services</b>	including high resolution figures, can be found at: <a href="http://n.neurology.org/content/early/2020/01/07/WNL.00000000000008866.full">http://n.neurology.org/content/early/2020/01/07/WNL.00000000000008866.full</a>
<b>Subspecialty Collections</b>	This article, along with others on similar topics, appears in the following collection(s): <b>All Cognitive Disorders/Dementia</b> <a href="http://n.neurology.org/cgi/collection/all_cognitive_disorders_dementia">http://n.neurology.org/cgi/collection/all_cognitive_disorders_dementia</a> <b>All Sleep Disorders</b> <a href="http://n.neurology.org/cgi/collection/all_sleep_disorders">http://n.neurology.org/cgi/collection/all_sleep_disorders</a> <b>Alzheimer's disease</b> <a href="http://n.neurology.org/cgi/collection/alzheimers_disease">http://n.neurology.org/cgi/collection/alzheimers_disease</a>
<b>Permissions &amp; Licensing</b>	Information about reproducing this article in parts (figures, tables) or in its entirety can be found online at: <a href="http://www.neurology.org/about/about_the_journal#permissions">http://www.neurology.org/about/about_the_journal#permissions</a>
<b>Reprints</b>	Information about ordering reprints can be found online: <a href="http://n.neurology.org/subscribers/advertise">http://n.neurology.org/subscribers/advertise</a>

*Neurology*® is the official journal of the American Academy of Neurology. Published continuously since 1951, it is now a weekly with 48 issues per year. Copyright © 2020 The Author(s). Published by Wolters Kluwer Health, Inc. on behalf of the American Academy of Neurology. All rights reserved. Print ISSN: 0028-3878. Online ISSN: 1526-632X.

