

**Genome-wide association study of corneal biomechanical properties
identifies over 200 loci providing insight into the genetic aetiology of ocular
diseases**

Mark J. Simcoe^{1,2}, Anthony P. Khwaja^{3,4}, UK Biobank Eye and Vision Consortium, Pirro G. Hysi^{1,2}, and
Christopher J. Hammond^{1,2,*}

Affiliations:

1 Department of Ophthalmology, Kings College London, London, United Kingdom

2 KCL Department of Twins Research and Genetic Epidemiology, London, United Kingdom

3 NIHR Biomedical Research Centre, Moorfields Eye Hospital NHS Foundation Trust and UCL Institute of
Ophthalmology, London, UK

4 Department of Public Health and Primary Care, Institute of Public Health, University of Cambridge School of
Clinical Medicine, Cambridge, UK

* Corresponding author: chris.hammond@kcl.ac.uk

Word Count – 3621

Abstract

Corneal hysteresis and corneal resistance factor are parameters which reflect the dynamic biomechanical properties of the cornea and have been shown to be biomarkers of corneal disease. In this genome-wide association study of over 100,000 participants we identified over 200 genetic loci, all but eight novel, significantly associated with either one or both of these traits. In addition to providing key insights into the genetic architecture underlying normal corneal function, these results identify many candidate loci in the study of corneal diseases that lead to severe visual impairment. Additionally, using Mendelian randomisation we were able to identify causal relationships between corneal biomechanics and intraocular pressure measurements which help elucidate the relationship between corneal properties and glaucoma.

Introduction

Corneal hysteresis (CH) and corneal resistance factor (CRF) are quantitative measures of corneal biomechanics. Both phenotypes are measured using the Ocular Response Analyzer (ORA), a non-contact tonometer(1) that differs from conventional non-contact tonometry as it records both the inward and outward applanation pressures, from which CH and CRF measures are derived (see Methods). CH is reflective of the visco-elastic dampening properties of the cornea(1) and is also considered indicative of corneal viscosity(2). CRF is designed to reflect the cornea's resistance to deformation(3); it is adjusted to be maximally associated with central corneal thickness (CCT) and minimally associated with intraocular pressure (IOP). It has been proposed that cornea's with reduced dampening capabilities are more susceptible to several ocular diseases(2).

CH and CRF have been implicated in several conditions of the eye. Previous work(4-6) has suggested that CH and CRF may be predictors of glaucoma, independent of elevated intraocular pressure. CH and CRF are also correlated, both phenotypically and genotypically with central corneal thickness and keratoconus(7). CH and CRF are also lower in patients with Fuchs Endothelial Corneal Dystrophy (FECD)(8).

Genetic effects play a large role in CH and CRF variation. CH is highly heritable, with a reported narrow sense heritability of $h^2=0.77(9)$. Additionally, several loci associated with both CH and CRF have been identified in a previous study(7).

This study aimed to explore the genetic architecture of CH and CRF and clarify their genetic correlation with eye and systemic disease. Participants from the UK Biobank were used as a discovery sample in this study. The UK Biobank is a population based cohort with 503,325 participants between 40 to 69 years of age(10).

Results

There were 106,041 and 106,030 participants with a 97.7% sample overlap (103,591 participants) included for CH and CRF analyses respectively following quality control (see Methods). The mean age of participants was 57.3 (SD=7.87) and 53.2% of participants were female. A summary of the participants measured phenotypes, stratified by age group, is provided in Table 1 and the phenotypic distributions stratified by sex are displayed in Supplementary Figures 1a and 1b. CH distributions and phenotypic associations within the UK Biobank have also been previously described elsewhere(11).

Phenotypically, CH and CRF were highly correlated ($r=0.82$, $p<1.0\times 10^{-100}$) (Figure 1). Both CH and CRF are associated with participant age: CH – $\beta=-0.031\text{mmHg/year}$ (95% CI=[-0.030, -0.032], $p<1.0\times 10^{-100}$), CRF – $\beta=-0.015\text{mmHg/year}$ (95% CI=[-0.014, -0.016], $p=1.6\times 10^{-93}$), and on average men had lower CH ($\beta=-0.40\text{mmHg}$, 95% CI=[-0.38, -0.42], $p<1.0\times 10^{-100}$) and CRF ($\beta=-0.30\text{mmHg}$, 95% CI=[-0.28, -0.32], $p<1.0\times 10^{-100}$) than women.

CH was negatively correlated with corneal-compensated intraocular pressure (IOPcc) ($r=-0.46$, $p<1.0\times 10^{-100}$). CRF was positively correlated with IOPcc, albeit only to a small degree ($r=0.081$, $p<1.0\times 10^{-100}$), despite CRF being adjusted to remove correlation with IOPcc(3).

Both CH and CRF were lower in primary open-angle glaucoma (POAG) cases than controls (Welch Two Sample t-test: CH – cases $\bar{x}=9.96\text{mmHg}$, controls $\bar{x}=10.68\text{mmHg}$, $p=1.7\times 10^{-66}$; CRF – cases $\bar{x}=10.72\text{mmHg}$, controls $\bar{x}=10.92\text{mmHg}$, $p=1.5\times 10^{-5}$), despite 60.2% of POAG cases taking IOP-lowering medication which has been reported to increase CH(12).

Over 12 million SNPs (see Methods) were tested for association separately for CH and CRF. The genomic inflation factors(13) were $\lambda_{\text{CH}}=1.31$ and $\lambda_{\text{CRF}}=1.43$, and the respective LD score regression intercepts (and ratios) were 1.06 (0.10) and 1.08 (0.11), consistent with expectations of polygenicity and large sample sizes(14) indicating results are unlikely to be inflated due to population structure. Genome-wide significant association ($p<5\times 10^{-8}$) with CH and CRF was observed for 13,945 and 20,020 variants respectively (Miami plot of results in Figure 2), clustered within 157 and 181 distinct genomic regions respectively (Supplementary Tables S1 and S2), including eight regions previously reported for CH and CRF(7); three of these loci (*ZNF469*, *TCF4* and *COL6A1*) were previously associated only with CRF, but were associated with both phenotypes in our analyses. Overall in these analyses, 111 regions were associated at genome-wide significance with both CH and CRF. Figure 3 plots the effect size of the lead SNP for CH and CRF from each genomic region, and whether they are significantly associated with either one or both CH and CRF.

Strong association was detected for variants within or adjacent to multiple genes from the Collagens superfamily; association was detected for both phenotypes at loci located within the genes encoding all three subunits of Collagen type VI (*COL6A1*, rs142493024, $p_{\text{CH}}=7.5\times 10^{-98}$, $p_{\text{CRF}}=1.1\times 10^{-101}$; *COL6A2*, rs1042917, $p_{\text{CH}}=9.7\times 10^{-28}$, $p_{\text{CRF}}=1.3\times 10^{-38}$;

COL6A3, rs2645773, $p_{CH}=6.6 \times 10^{-31}$, $p_{CRF}=4.5 \times 10^{-36}$). Collagen type VI accounts for up to a quarter of the cornea's dry weight(15).

Collagen type VIII is an important component of the Descemet membrane(16) in the posterior section of the cornea, and has two subunits encoded by the genes *COL8A1* and *COL8A2*. SNPs upstream of *COL8A1* (rs2256606, $p=2.2 \times 10^{-9}$) and within *COL8A2* (rs4653159, $p=2.9 \times 10^{-11}$) were associated with CRF. However, association of these markers did not reach genome-wide significance for CH ($p=5.1 \times 10^{-7}$ and 5.8×10^{-4} respectively).

The stroma constitutes 90% of the corneal thickness and is primarily a complex of type I and type V collagen(17). Significant association was identified near one of type I collagen's two subunits (*COL1A1*) for CRF (rs180976308, $p=2.0 \times 10^{-11}$), though for CH this marker only had suggestive association ($p=2.5 \times 10^{-6}$). Meanwhile, SNPs adjacent to the gene for one of type V collagen's subunits were associated with both CH and CRF (rs3132302, $p_{CH}=9.0 \times 10^{-17}$, $p_{CRF}=9.4 \times 10^{-28}$).

Interestingly, a number of loci were specifically associated with CH and not CRF. These specific loci included several loci previously reported to be associated with IOP(18) such as: *TMCO1* (rs7518099, $p_{CH}=3.2 \times 10^{-28}$, $p_{CRF}=0.36$), *CAV2* (rs10233003, $p_{CH}=5.7 \times 10^{-11}$, $p_{CRF}=0.001$), and *DGKG* (rs9853115, $p_{CH}=1.1 \times 10^{-28}$, $p_{CRF}=0.01$). These phenotype specific loci likely result from differences in phenotypic correlation between IOP with CH and CRF. Meanwhile the CRF specific loci are primarily collagen related genes (as previously discussed), likely as a result of variation in the corneas physical structure having a greater influence over CRF than CH.

Additionally, loci connected with rare Mendelian disorders were associated with these corneal phenotypes, for example a locus within the gene *VCAN* (rs149879035, $p_{CH}=1.3 \times 10^{-9}$, $p_{CRF}=7.4 \times 10^{-9}$). Mutations within *VCAN* are responsible for the autosomal dominant

vitreoretinopathy Wagner syndrome(19). A key feature of Wagner syndrome is an abnormal structure in the vitreous gel, reducing its viscosity. Though CH is indicative of corneal viscosity, it is likely the viscosity in both the anterior and posterior chambers have some shared genetic pathways.

Several other genes harbouring associated SNPs are connected to rare genetic disorders, particularly corneal, ocular, and syndromic disorders of connective tissue (e.g. brittle cornea syndrome and Shprintzen-Goldberg syndrome) based on data available from OMIM(20) (summarised in Supplementary Tables S3 and S4).

Finally, many loci known to be associated with corneal diseases, including keratoconus(21) and FECD(22), were strongly associated with CH and CRF. These included known keratoconus loci: *FNDC3B* (rs7635832, $p_{CH}=6.7 \times 10^{-91}$, $p_{CRF}=6.9 \times 10^{-134}$), *ZNF469* (rs28425635, $p_{CH}=4.3 \times 10^{-92}$, $p_{CRF}=1.5 \times 10^{-109}$), *MPDZ* (rs12686184, $p_{CH}=7.0 \times 10^{-86}$, $p_{CRF}=5.6 \times 10^{-96}$) and *FOXO1* (rs11616662, $p_{CH}=1.7 \times 10^{-74}$, $p_{CRF}=3.5 \times 10^{-84}$); and FECD loci: *TCF4* (rs11659764, $p_{CH}=2 \times 10^{-77}$, $p_{CRF}=3.9 \times 10^{-92}$), *ATP1B1* (rs1200108, $p_{CH}=6.2 \times 10^{-53}$, $p_{CRF}=2.8 \times 10^{-41}$) and *SLC25A22* (rs12223324, $p_{CH}=2.4 \times 10^{-15}$, $p_{CRF}=1.1 \times 10^{-31}$).

Conditional analysis refined these results, identifying 203 and 258 informative SNPs associated with CH and CRF respectively. The Ensembl Variant Effect Predictor(23) identified that out of the 203 conditional SNPs for CH, 12 are missense variants and 39 are regulatory region variants (Supplementary Table S5). Of the 258 conditional SNPs for CRF, 15 are missense and 40 are in regulatory regions (Supplementary Table S6). Seven missense variants: rs72755233 (*ADAMTS17*), rs12448432 (*HAGHL*), rs77542162 (*ABCA6*), rs77583146 (*WNT10A*), rs121908120 (*WNT10A*), rs1042917 (*COL6A2*) and rs139498917 (*MAMDC2*) were independently associated with both phenotypes; their missense coding effects make them strong candidates for causal loci. The minor allele for one of these SNPs in

particular, rs139498917_A (*MAMDC2*), is associated with a very large, and clinically relevant increase in both CH and CRF ($\beta_{\text{CH}}=1.04$, $\text{SE}=0.07$; $\beta_{\text{CRF}}=1.14$, $\text{SE}=0.08$), equal to a 0.62 standard deviation increase per allele for both.

Replication of the autosomal conditional SNPs (200 SNPs for CH and 253 for CRF) was conducted with a meta-analysis of two independent cohorts: TwinsUK and EPIC-Norfolk, as previously described(7). Though the replication dataset was less than 10% of the discovery cohort sample size, 17 SNPs from 17 separate regions replicated at Bonferroni adjusted significance ($p<2.5\times 10^{-4}$) (Supplementary Table S7) for CH, while an additional 94 SNPs were associated with nominal significance ($p<0.05$) with the same direction of effect. Two SNPs (rs534975221 and rs544072714) were not present in the replication dataset for CRF. From the remaining 253 markers that were tested, 26 SNPs from 20 distinct regions replicated at Bonferroni adjusted significance ($p<1.98\times 10^{-4}$) (Supplementary Table S8), while an additional 106 SNPs had an equal direction of effect with at least nominally significant association. There was very strong correlation of effect sizes between the discovery and replication datasets: $r_{\text{CH}}=0.90$, $p=3.6\times 10^{-73}$; $r_{\text{CRF}}=0.89$, $p=2.5\times 10^{-86}$. Figures 4a and 4b show plots of the effect sizes between datasets for CH and CRF respectively.

In line with our observations of association for polymorphisms within or near several collagen-coding genes, gene-set enrichment analyses (after adjustment for 0.05 false discovery rate (FDR)) identified enrichment for collagen pathways including the “Collagens”(24) gene set (FDR adjusted $q_{\text{CH}}=9.0\times 10^{-4}$, $q_{\text{CRF}}=9.1\times 10^{-3}$). There was noticeable enrichment for gene sets of systemic pathways such as the Gene Ontology(25) “Skeletal System Development” (FDR adjusted $q_{\text{CH}}=6.0\times 10^{-4}$, $q_{\text{CRF}}=0$) (all results summarised in Supplementary Tables S9 and S10).

Currently, eQTL data for corneal tissue are not publicly available, however within the cornea there is a high density of keratocytes(26), a sub-type of fibroblast. Therefore, eQTL data for fibroblasts from the GTEx database(27) were used as a surrogate reference for eQTL effects within the cornea. To check the validity of eQTL derived results, RNA-seq data(28) were used to check if the implicated mRNAs are expressed in corneal tissue. Significant eQTL effects in fibroblasts were present for 70 CH conditional SNPs and 82 CRF SNPs; 58/70 CH eQTL mRNAs and 69/82 for CRF are known to be expressed within corneal tissue (Supplementary Tables S11 and S12), the mRNA's for the other eQTL's were not included in Carnes *et al.*'s(28) RNA-seq analysis so it is unknown whether or not they are expressed in corneal tissue.

Using the same GTEx(27) fibroblast transcriptome dataset as the previous analysis, we performed gene-level association testing with S-Predixcan(29) for both CH and CRF. The strongest gene association for both phenotypes was increased expression of *ZNF469* ($p_{CH}=1.7 \times 10^{-40}$, $p_{CRF}=6.5 \times 10^{-52}$) and a non-coding RNA (*RP11-863P13.3*: $p_{CH}=9.7 \times 10^{-31}$, $p_{CRF}=3.7 \times 10^{-34}$), upstream of *ZNF469* on chromosome 16 (Supplementary Tables S13 and S14). These results indicate that the strong association in the SNP based GWAS's for variants within *ZNF469* (rs28425635, $p_{CH}=2.0 \times 10^{-92}$, $p_{CRF}=1.5 \times 10^{-109}$) is likely mediated through variation in gene expression. In total, there was significant association for expression of 86 genes with CH, and 107 with CRF, while 75/86 of the CH associated genes and 96/107 of the CRF associated genes are known to be expressed within corneal tissue (Supplementary Tables S13 and S14).

Genetic correlations (denoted r_g) were identified for CH and CRF with multiple phenotypic traits (Supplementary Tables S15 and S16). As expected, their strongest correlation was with each other ($r_g=0.88$, $p=2.2 \times 10^{-1547}$) and with CCT (CH: $r_g=0.64$, $p=8.0 \times 10^{-32}$; CRF: $r_g=0.69$, $p=1.3 \times 10^{-45}$). Systemic trait correlations for CH and CRF were similar, such as forced vital

capacity (CH: $r_g=-0.12$, $p=3.1 \times 10^{-7}$; CRF: $r_g=-0.10$, $p=1.2 \times 10^{-5}$) and standing height (CH: $r_g=-0.11$, $p=2.7 \times 10^{-7}$; CRF: $r_g=-0.09$, $p=3.3 \times 10^{-5}$). However, IOPcc correlations with CH and CRF were in reverse directions (CH: $r_g=-0.18$, $p=1.5 \times 10^{-10}$; CRF: $r_g=0.34$, $p=6.8 \times 10^{-42}$) and for POAG (CH: $r_g=-0.14$, $p=7.0 \times 10^{-3}$; CRF: $r_g=0.30$, $p=1.4 \times 10^{-10}$). The genetic correlation with IOPcc and POAG was stronger for CRF than CH, despite the reverse being true for IOPcc phenotypically.

In light of the genetic correlations between IOPcc and both CH and CRF, despite IOPcc and CRF having minimal phenotypic correlation, we applied Mendelian randomisation(30) to infer any direct causal relationships. A combination of Mendelian randomisation approaches indicated that the “penalized” regression models were most appropriate for this data (see Methods for details). Results infer IOPcc has a direct causal effect on both corneal biomechanical phenotypes (best-fitting models summarised in Table 2). However, when testing for causality in the opposite direction (CH and CRF affecting IOPcc), the MR-Egger intercept was significantly different from 0. These results indicate that IOPcc has a unidirectional causal effect over CH and CRF and that intraocular pressure influences how the cornea responds to biomechanical change. Full results from all models are provided in Supplementary Tables S17-20.

Discussion

This GWAS identified a total of 217 distinct genomic regions significantly associated with either one or both corneal biomechanical properties, CH and CRF. These include loci implicated in the corneal diseases of keratoconus(21) and FECD(22), alongside many novel associations, and replicated all previously reported associations for these phenotypes(7).

One of these novel associations was on chromosome X, which is often excluded from GWAS analyses(31). The strongest association on this chromosome was within the biglycan gene (*BGN*). The biglycan protein forms a complex acting as a link between type II and VI collagen, with biglycan deficient animal models having disarrayed collagen fibrils(32). Association at this locus is another component in collagen related pathways which were highly enriched in our results.

Previous studies have shown that CH and CRF are significantly different in patients with corneal dystrophies such as keratoconus(33, 34) and FECD(8) compared with healthy controls, and in the case of keratoconus they have strong predictive value for disease status(34). However due to these conditions having a reasonably low prevalence, it is difficult to acquire large numbers of cases to provide statistical power in GWAS analyses. Therefore, CH and CRF serve as useful endophenotypes and the numerous significantly associated loci in our analyses provide suitable candidates for further study of the genetic aetiology of corneal diseases.

There is an enrichment of associated variants within or adjacent to genes for multiple collagen subunits for both CH and CRF. As different collagen types are expressed throughout different layers of the cornea, these results indicate that variations in collagens throughout the corneal layers influence corneal biomechanical properties. Interestingly, despite analysing the same sample for both phenotypes, there is both a greater enrichment of collagen loci and a greater number of significantly associated loci for CRF than for CH. This is possibly a consequence of IOP effects on the corneal dampening capabilities, thus CH measurements contain an IOP component and IOP is known to be a relatively “noisy” phenotype(35). Meanwhile CRF was designed to have a minimal IOP component(3), which in turn may reduce noise in the data.

Mendelian randomisation indicates that IOPcc exerts causal effects over CH and CRF. The directions of effect show that an increase in IOPcc will reduce CH but simultaneously raise CRF. Although counterintuitive at first sight given the strong phenotypic correlation between CH and CRF ($r=0.82$, $p<1.0\times 10^{-100}$) these results are consistent with the core properties of these parameters. CH is representative of the cornea's dampening capabilities which will be reduced by increased pressure, whereas CRF represents the resistance within the cornea which will increase when subjected to raised pressure. Interestingly these results infer that CRF is not independent of IOP, despite the formula to derive it being designed to minimise IOP correlation and effects(3); genetic correlation between CRF and POAG ($r_g=0.30$, $p=1.4\times 10^{-10}$) is likely driven by the effect IOP has over CRF. In light of these results, further study is required to determine the utility and independence of CH as a risk factor for POAG progression(4).

This study is the largest to date, and uniform measurement methods were used in a largely homogenous UK population. Our findings provide new insight into the genetic architecture of dynamic corneal properties, which may be useful in aiding our understanding of both normal corneal development and disease pathways involved in a number of corneal conditions.

Materials and Methods

We performed a GWAS using information from the 117,649 participants that took part in the eye and vision component in the UK Biobank(10).

Subjects – Subjects included for this analysis provided full informed consent in accordance with ethical approval granted and overseen by the UK Biobank Ethics and Governance Council. All subjects included were confirmed to be of European ancestry through principal

component analysis as described in a previous study(18), and all first-degree relatives, as determined by identity by descent calculations, were excluded.

Phenotyping – CRF and CH were both measured using the ORA device, during an eye examination performed by a trained technician. The ORA uses a 20ms air pulse to flatten the cornea, while using an electro-optical system to measure the inward (designated P1) and outward (designated P2) applanation pressures(1). CH is defined as the absolute difference between P1 and P2(1), while CRF is a linear function of P1 and P2 that has been adjusted to minimise correlation with corneal-compensated intraocular pressure (IOP_{cc}) while maximising correlation with central corneal thickness (CCT)(3). Measurements were excluded from analysis if: the participants had a history of glaucoma or corneal surgery, refractive surgery, eye injuries, and those currently using glaucoma medications. In addition, the top and bottom 0.5 percentiles were excluded to remove any outliers that are likely artefact. The mean of measures from the left and right eye were used as the outcome variable. In total, 106,041 and 106,030 participants remained for CH and CRF analysis respectively, with a 97.7% sample overlap (103,591).

POAG cases and controls were ascertained using ICD10 codes and self-reported questionnaire data. Use of IOP-lowering medication was self-reported.

Genotyping – UK Biobank participants were genotyped on one of two arrays: the Affymetrix UK Biobank Axiom array, and the UK BiLEVE array. Imputation of additional variants was performed using a combined Haplotype Reference Consortium (HRC)(36) and UK10K(37) reference panel, full details for genotyping and imputation are described elsewhere(38). Only variants that were either directly genotyped or imputed using the HRC reference panel were included in our analysis. Variants were then filtered with minor allele frequency (MAF) >0.1% and an imputation quality score >0.4 cut-off.

Association tests – The CH and CRF measurements were used as the outcome variables in separate linear mixed model regressions, under the assumption of an additive model for allelic effects. Adjustments were made for age, sex and the first five principal components. These analyses were performed in BOLT-LMM(39) using a linear mixed model, that provides additional corrections for population structure and cryptic relatedness. For chromosome X, genotypes were coded as diploid (males coded as 0/2 and females as 0/1/2) to account for dosage compensation.

Phenotypic association tests – Phenotypic associations with age were tested in R(40) using a linear model, adjusted for age and sex. Correlation between CH and CRF was tested with Pearson's correlation coefficient.

Genomic region and significance specification – In this paper, an “associated region” was defined as a region with genome-wide significantly associated markers, separated from other associated regions by a minimum of 1 million base-pairs that are not significantly associated. Genome-wide significance for our study was set at $P < 5 \times 10^{-8}$, customary for these analyses.

LD score regression and genetic correlation – An LD score regression intercept was calculated to identify any possible inflation(14) using the LD Hub(41). This approach is more informative for this study than the Devlin genomic inflation lambda(13), on account of the large cohort size and high trait polygenicity. LD Hub was then used to test for genetic correlation between other heritable traits, and CH and CRF respectively(42).

Conditional analysis – Following the same procedure outlined by Yang et al., conditional analysis was conducted in GCTA(43) to identify variants that are independently associated with CH or CRF.

Gene pathway enrichment analysis – Summary statistics from each phenotype were analysed by MAGENTA(44) to identify any enriched association in gene pathways for canonical gene

sets and Gene Ontology gene sets(25). The original databases used were acquired from the Molecular Signatures Database (version MSigDB v6.1)(45) and were then modified for compatibility. An enrichment cut-off for the 75th percentile was applied as recommended for highly polygenic traits(44). A 5% false discovery rate was applied to results to correct for multiple testing.

Gene-based association – Summary statistics from our GWAS were used as input for analysis by S-PrediXcan(29) to test for association between phenotype and whole gene expression. As with the eQTL analysis, results were limited to fibroblast tissue, as it is a functionally relevant model due to the high density of keratocytes, a sub-type of fibroblast, within the cornea(26). A Bonferroni corrected significance threshold of $P < 2.5 \times 10^{-7}$ is recommended when testing all gene-tissue pairs. However, as we only included fibroblast tissue in this analysis, this value was adjusted to correct for all tested gene-tissue pairs and set at $P < 5.5 \times 10^{-6}$.

Replication of associated markers – Autosomal SNPs with independent association in this study, as identified by conditional analysis, were subject to replication testing with Bonferroni correction for multiple testing. The replication was conducted with a meta-analysis in two independent cohorts, EPIC-Norfolk(46, 47) and TwinsUK(48). In brief, GWAS and subsequent meta-analysis was conducted for both CH and CRF separately in these cohorts. In total 9029 participants of European ancestry were included in these analyses, with no known sample overlap with the UK Biobank. Full details of this analysis are described elsewhere(7).

Mendelian randomisation – Mendelian randomisation was used to test for causal inference between IOPcc with CH and CRF. Summary SNP data for IOPcc was used from Khawaja *et al.*'s recent meta-analysis (which included the UK Biobank)(18). The lead SNPs from each

separate genomic region were selected as genetic instruments for the exposure variable in order to prevent confounding errors resulting from correlated SNPs. Any SNPs significantly associated with the outcome variable ($p < 5 \times 10^{-8}$) were excluded as they may have common cause with the outcome (the MR independence assumption). Standard regression, penalized regression, robust regression, and penalized robust regression models were applied for these analyses with results indicating that the penalized models were the most suitable. The penalized models downweight the contribution of variants with heterogeneous causal estimates to the analysis; due to the inclusion of a relatively large number of instrument variables in these analyses, a penalized regression is more stable than a standard linear regression(49). For the inverse-variance models, the ψ variable was set as the observational correlation between the exposure and outcome phenotypes to account for sample overlap. All analysis was performed in the MendelianRandomization(50) package in R(40).

Acknowledgements

This research was conducted by using the UK Biobank Resource under application no. 17615. UK Biobank was established by the Wellcome Trust medical charity, Medical Research Council, Department of Health, Scottish Government and Northwest Regional Development Agency. It also had funding from the Welsh Assembly Government, British Heart Foundation and Diabetes UK.

The TwinsUK study was funded by the Wellcome Trust (105022/Z/14/Z). The study also receives support from the National Institute for Health Research (NIHR)-funded

BioResource, Clinical Research Facility and Biomedical Research Centre based at Guy's and St Thomas' NHS Foundation Trust in partnership with King's College London. SNP

genotyping was performed by the Wellcome Trust Sanger Institute and National Eye Institute via NIH/CIDR.

The EPIC-Norfolk study (<https://doi.org/10.22025/2019.10.105.00004>) has received funding from the Medical Research Council (MR/N003284/1 and MC-UU_12015/1) and Cancer Research UK (C864/A14136). The genetics work in the EPIC-Norfolk study was funded by the Medical Research Council (MC_PC_13048). We are grateful to all the participants who have been part of the project and to the many members of the study teams at the University of Cambridge who have enabled this research. A.P.K. is supported by a Moorfields Eye Charity Career Development Fellowship.

Conflict of interest statement

The authors of this manuscript have no conflicts of interest to declare.

References:

- 1 Luce, D.A. (2005) Determining in vivo biomechanical properties of the cornea with an ocular response analyzer. *J Cataract Refr Surg*, **31**, 156-162.
- 2 Garcia-Porta, N., Fernandes, P., Queiros, A., Salgado-Borges, J., Parafita-Mato, M. and Gonzalez-Mejjome, J.M. (2014) Corneal biomechanical properties in different ocular conditions and new measurement techniques. *ISRN Ophthalmol*, **2014**, 724546.
- 3 Luce, D. (2006) Methodology for Cornea Compensated IOP and Corneal Resistance Factor for the Reichert Ocular Response Analyzer. *Invest Ophthalm Vis Sci*, **47**, 2266-2266.
- 4 Medeiros, F.A., Meira-Freitas, D., Lisboa, R., Kuang, T.M., Zangwill, L.M. and Weinreb, R.N. (2013) Corneal Hysteresis as a Risk Factor for Glaucoma Progression: A Prospective Longitudinal Study. *Ophthalmology*, **120**, 1533-1540.
- 5 Medeiros, F.A. and Weinreb, R.N. (2006) Evaluation of the influence of corneal biomechanical properties on intraocular pressure measurements using the ocular response analyzer. *J Glaucoma*, **15**, 364-370.
- 6 Liu, J. and Roberts, C.J. (2005) Influence of corneal biomechanical properties on intraocular pressure measurement: quantitative analysis. *J Cataract Refract Surg*, **31**, 146-155.
- 7 Khawaja, A.P., Rojas Lopez, K.E., Hardcastle, A.J., Hammond, C.J., Liskova, P., Davidson, A.E., Gore, D.M., Hafford Tear, N.J., Pontikos, N., Hayat, S. *et al.* (2019) Genetic Variants Associated With Corneal Biomechanical Properties and Potentially Conferring Susceptibility to Keratoconus in a Genome-Wide Association Study. *JAMA Ophthalmol*, in press.
- 8 del Buey, M.A., Cristobal, J.A., Ascaso, F.J., Lavilla, L. and Lanchares, E. (2009) Biomechanical properties of the cornea in Fuchs' corneal dystrophy. *Invest Ophthalmol Vis Sci*, **50**, 3199-3202.
- 9 Carbonaro, F., Andrew, T., Mackey, D.A., Spector, T.D. and Hammond, C.J. (2008) The heritability of corneal hysteresis and ocular pulse amplitude: a twin study. *Ophthalmology*, **115**, 1545-1549.
- 10 Allen, N.E., Sudlow, C., Peakman, T. and Collins, R. (2014) UK Biobank Data: Come and Get It. *Sci Transl Med*, **6**.
- 11 Zhang, B., Shweikh, Y., Khawaja, A.P., Gallacher, J., Bauermeister, S., Foster, P.J., Eye, U.K. and Vision, C. (2019) Associations with Corneal Hysteresis in a Population Cohort: Results from 96 010 UK Biobank Participants. *Ophthalmology*, **126**, 1500-1510.
- 12 Bolivar, G., Sanchez-Barahona, C., Teus, M., Castejon, M.A., Paz-Moreno-Arrones, J., Gutierrez-Ortiz, C. and Mikropoulos, D.G. (2015) Effect of topical prostaglandin analogues on corneal hysteresis. *Acta Ophthalmol*, **93**, e495-498.
- 13 Devlin, B. and Roeder, K. (1999) Genomic control for association studies. *Biometrics*, **55**, 997-1004.
- 14 Bulik-Sullivan, B.K., Loh, P.R., Finucane, H.K., Ripke, S., Yang, J., Schizophrenia Working Group of the Psychiatric Genomics, C., Patterson, N., Daly, M.J., Price, A.L. and Neale, B.M. (2015) LD Score regression distinguishes confounding from polygenicity in genome-wide association studies. *Nat Genet*, **47**, 291-295.
- 15 Zimmermann, D.R., Trueb, B., Winterhalter, K.H., Witmer, R. and Fischer, R.W. (1986) Type-Vi Collagen Is a Major Component of the Human Cornea. *Febs Lett*, **197**, 55-58.

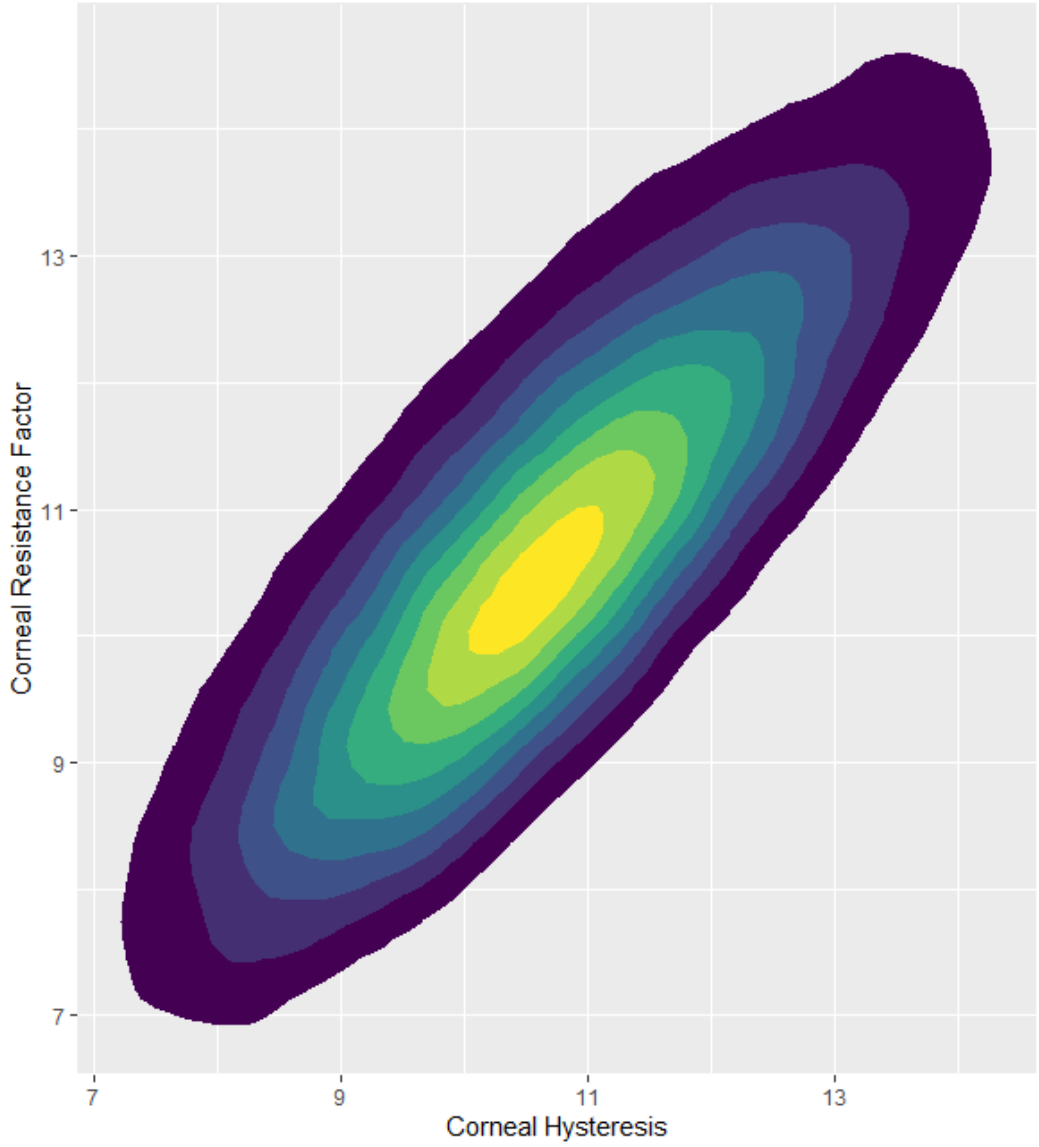
- 16 Muragaki, Y., Mattei, M.G., Yamaguchi, N., Olsen, B.R. and Ninomiya, Y. (1991) The Complete Primary Structure of the Human Alpha-1(Viii) Chain and Assignment of Its Gene (Col8a1) to Chromosome-3. *Eur J Biochem*, **197**, 615-622.
- 17 West-Mays, J.A. and Dwivedi, D.J. (2006) The keratocyte: Corneal stromal cell with variable repair phenotypes. *Int J Biochem Cell B*, **38**, 1625-1631.
- 18 Khawaja, A.P., Cooke Bailey, J.N., Wareham, N.J., Scott, R.A., Simcoe, M., Igo, R.P., Jr., Song, Y.E., Wojciechowski, R., Cheng, C.Y., Khaw, P.T. *et al.* (2018) Genome-wide analyses identify 68 new loci associated with intraocular pressure and improve risk prediction for primary open-angle glaucoma. *Nat Genet*, **50**, 778-782.
- 19 Brezin, A.P., Nedelec, B., Barjol, A., Rothschild, P.R., Delpesch, M. and Valleix, S. (2011) A new VCAN/versican splice acceptor site mutation in a French Wagner family associated with vascular and inflammatory ocular features. *Mol Vis*, **17**, 1669-1678.
- 20 Amberger, J., Bocchini, C. and Hamosh, A. (2011) A New Face and New Challenges for Online Mendelian Inheritance in Man (OMIM (R)). *Hum Mutat*, **32**, 564-567.
- 21 Rong, S.S., Ma, S.T.U., Yu, X.T., Ma, L., Chu, W.K., Chan, T.C.Y., Wang, Y.M., Young, A.L., Pang, C.P., Jhanji, V. *et al.* (2017) Genetic associations for keratoconus: a systematic review and meta-analysis. *Sci Rep*, **7**, 4620.
- 22 Afshari, N.A., Igo, R.P., Morris, N.J., Stambolian, D., Sharma, S., Pulagam, V.L., Dunn, S., Stamler, J.F., Truitt, B.J., Rimmler, J. *et al.* (2017) Genome-wide association study identifies three novel loci in Fuchs endothelial corneal dystrophy. *Nat Commun*, **8**.
- 23 McLaren, W., Gil, L., Hunt, S.E., Riat, H.S., Ritchie, G.R., Thormann, A., Flicek, P. and Cunningham, F. (2016) The Ensembl Variant Effect Predictor. *Genome Biology*, **17**, 122.
- 24 Naba, A., Clauser, K.R., Hoersch, S., Liu, H., Carr, S.A. and Hynes, R.O. (2012) The matrisome: in silico definition and in vivo characterization by proteomics of normal and tumor extracellular matrices. *Mol Cell Proteomics*, **11**, M111 014647.
- 25 Ashburner, M., Ball, C.A., Blake, J.A., Botstein, D., Butler, H., Cherry, J.M., Davis, A.P., Dolinski, K., Dwight, S.S., Eppig, J.T. *et al.* (2000) Gene Ontology: tool for the unification of biology. *Nature Genetics*, **25**, 25-29.
- 26 Patel, S.V., McLaren, J.W., Hodge, D.O. and Bourne, W.M. (2001) Normal human keratocyte density and corneal thickness measurement by using confocal microscopy in vivo. *Invest Ophthalmol Vis Sci*, **42**, 333-339.
- 27 Consortium, G.T. (2015) Human genomics. The Genotype-Tissue Expression (GTEx) pilot analysis: multitissue gene regulation in humans. *Science*, **348**, 648-660.
- 28 Carnes, M.U., Allingham, R.R., Ashley-Koch, A. and Hauser, M.A. (2018) Transcriptome analysis of adult and fetal trabecular meshwork, cornea, and ciliary body tissues by RNA sequencing. *Exp Eye Res*, **167**, 91-99.
- 29 Barbeira, A.N., Dickinson, S.P., Bonazzola, R., Zheng, J., Wheeler, H.E., Torres, J.M., Torstenson, E.S., Shah, K.P., Garcia, T., Edwards, T.L. *et al.* (2018) Exploring the phenotypic consequences of tissue specific gene expression variation inferred from GWAS summary statistics. *Nat Commun*, **9**, 1825.
- 30 Smith, G.D. and Ebrahim, S. (2003) 'Mendelian randomization': can genetic epidemiology contribute to understanding environmental determinants of disease? *Int J Epidemiol*, **32**, 1-22.

- 31 Wise, A.L., Gyi, L. and Manolio, T.A. (2013) eXclusion: toward integrating the X chromosome in genome-wide association analyses. *Am J Hum Genet*, **92**, 643-647.
- 32 Iacob, S. and Cs-Szabo, G. (2010) Biglycan regulates the expression of EGF receptors through EGF signaling pathways in human articular chondrocytes. *Connect Tissue Res*, **51**, 347-358.
- 33 Shah, S., Laiquzzaman, M., Bhojwani, R., Mantry, S. and Cunliffe, I. (2007) Assessment of the biomechanical properties of the cornea with the ocular response analyzer in normal and keratoconic eyes. *Invest Ophthalmol Vis Sci*, **48**, 3026-3031.
- 34 Luz, A., Fontes, B., Ramos, I.C., Lopes, B., Correia, F., Schor, P. and Ambrósio, R. (2012) Evaluation of ocular biomechanical indices to distinguish normal from keratoconus eyes. *Int J Kerat Ect Cor Dis*, **1**, 145-150.
- 35 Gilchrist, J.M. (1996) On the precision and reliability of IOP measurements. *Br J Ophthalmol*, **80**, 586-587.
- 36 McCarthy, S., Das, S., Kretzschmar, W., Delaneau, O., Wood, A.R., Teumer, A., Kang, H.M., Fuchsberger, C., Danecek, P., Sharp, K. *et al.* (2016) A reference panel of 64,976 haplotypes for genotype imputation. *Nat Genet*, **48**, 1279-1283.
- 37 Huang, J., Howie, B., McCarthy, S., Memari, Y., Walter, K., Min, J.L., Danecek, P., Malerba, G., Trabetti, E., Zheng, H.F. *et al.* (2015) Improved imputation of low-frequency and rare variants using the UK10K haplotype reference panel. *Nat Commun*, **6**.
- 38 Bycroft, C., Freeman, C., Petkova, D., Band, G., Elliott, L.T., Sharp, K., Motyer, A., Vukcevic, D., Delaneau, O., O'Connell, J. *et al.* (2018) The UK Biobank resource with deep phenotyping and genomic data. *Nature*, **562**, 203-209.
- 39 Loh, P.R., Tucker, G., Bulik-Sullivan, B.K., Vilhjalmsson, B.J., Finucane, H.K., Salem, R.M., Chasman, D.I., Ridker, P.M., Neale, B.M., Berger, B. *et al.* (2015) Efficient Bayesian mixed-model analysis increases association power in large cohorts. *Nature Genetics*, **47**, 284-+.
- 40 R Core Team. (2017). R Foundation for Statistical Computing, Vienna, Austria, Vol. 3.4.0.
- 41 Zheng, J., Erzurumluoglu, A.M., Elsworth, B.L., Kemp, J.P., Howe, L., Haycock, P.C., Hemani, G., Tansey, K., Laurin, C., Early, G. *et al.* (2017) LD Hub: a centralized database and web interface to perform LD score regression that maximizes the potential of summary level GWAS data for SNP heritability and genetic correlation analysis. *Bioinformatics*, **33**, 272-279.
- 42 Bulik-Sullivan, B., Finucane, H.K., Anttila, V., Gusev, A., Day, F.R., Loh, P.R., Duncan, L., Perry, J.R.B., Patterson, N., Robinson, E.B. *et al.* (2015) An atlas of genetic correlations across human diseases and traits. *Nature Genetics*, **47**, 1236-+.
- 43 Yang, J., Lee, S.H., Goddard, M.E. and Visscher, P.M. (2011) GCTA: a tool for genome-wide complex trait analysis. *Am J Hum Genet*, **88**, 76-82.
- 44 Segre, A.V., Consortium, D., investigators, M., Groop, L., Mootha, V.K., Daly, M.J. and Altshuler, D. (2010) Common inherited variation in mitochondrial genes is not enriched for associations with type 2 diabetes or related glycemic traits. *PLoS Genet*, **6**, e1001058.
- 45 Liberzon, A., Subramanian, A., Pinchback, R., Thorvaldsdottir, H., Tamayo, P. and Mesirov, J.P. (2011) Molecular signatures database (MSigDB) 3.0. *Bioinformatics*, **27**, 1739-1740.
- 46 Hayat, S.A., Luben, R., Keevil, V.L., Moore, S., Dalzell, N., Bhaniani, A., Khawaja, A.P., Foster, P., Brayne, C., Wareham, N.J. *et al.* (2014) Cohort Profile: A prospective cohort study of objective physical and cognitive capability and visual health in an ageing population of men and women in Norfolk (EPIC-Norfolk 3). *Int J Epidemiol*, **43**, 1063-1072.

- 47 Khawaja, A.P., Chan, M.P., Hayat, S., Broadway, D.C., Luben, R., Garway-Heath, D.F., Sherwin, J.C., Yip, J.L., Dalzell, N., Wareham, N.J. *et al.* (2013) The EPIC-Norfolk Eye Study: rationale, methods and a cross-sectional analysis of visual impairment in a population-based cohort. *BMJ Open*, **3**.
- 48 Moayyeri, A., Hammond, C.J., Valdes, A.M. and Spector, T.D. (2013) Cohort Profile: TwinsUK and Healthy Ageing Twin Study. *Int J Epidemiol*, **42**, 76-85.
- 49 Bowden, J., Davey Smith, G., Haycock, P.C. and Burgess, S. (2016) Consistent Estimation in Mendelian Randomization with Some Invalid Instruments Using a Weighted Median Estimator. *Genet Epidemiol*, **40**, 304-314.
- 50 Burgess, S. and Thompson, S.G. (2017) Interpreting findings from Mendelian randomization using the MR-Egger method. *Eur J Epidemiol*, **32**, 377-389.

Legends to Figures

Phenotypic relationship between Corneal Hysteresis and Corneal Resistance Factor



MANUSCRIPT

UCL

Figure 1 – A heatmap of corneal hysteresis against corneal resistance factor measurements for the 103,591 participants that had measurements for both post-QC.

UNCORRECTED MANUSCRIPT

MANUSCRIPT

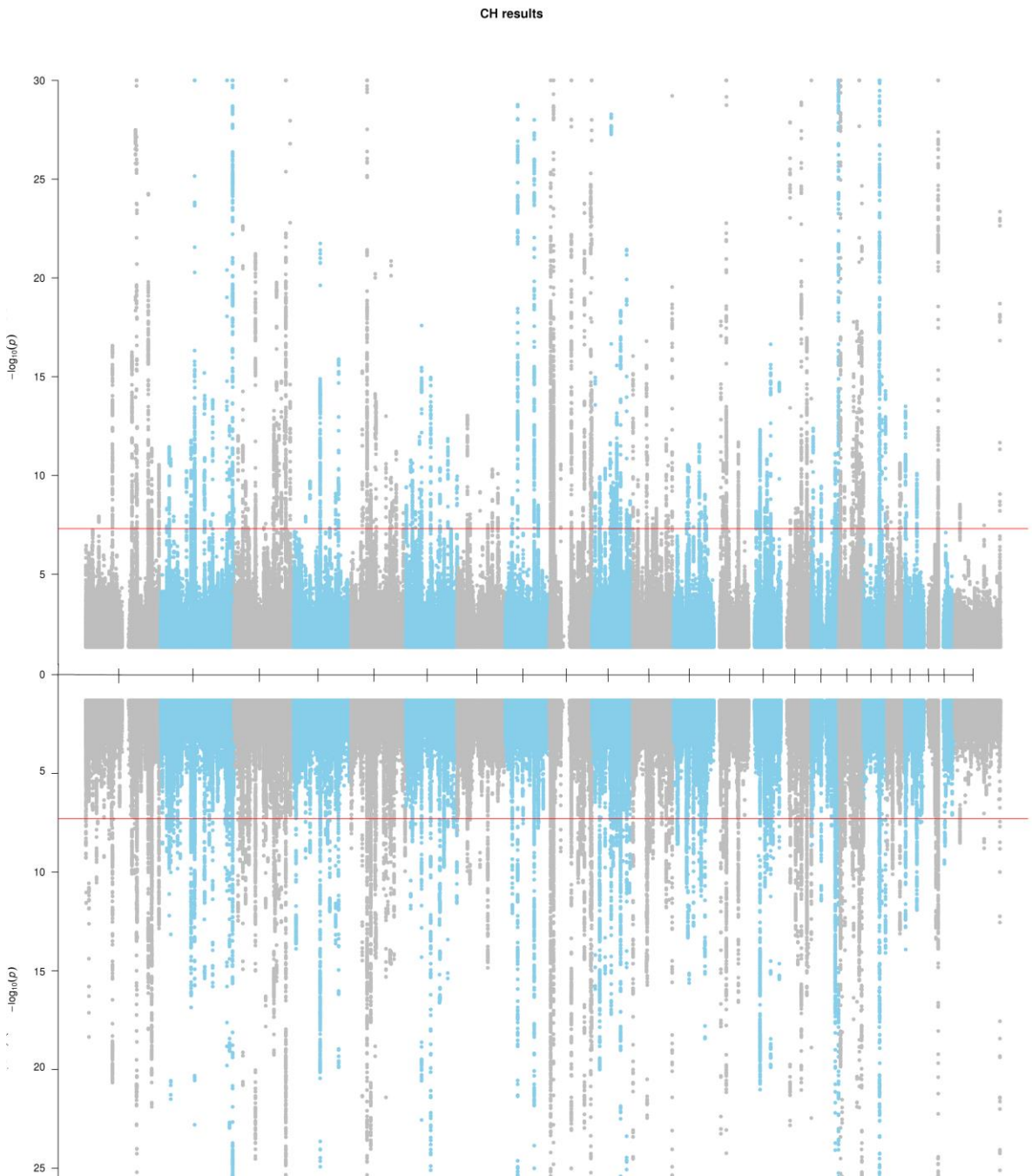
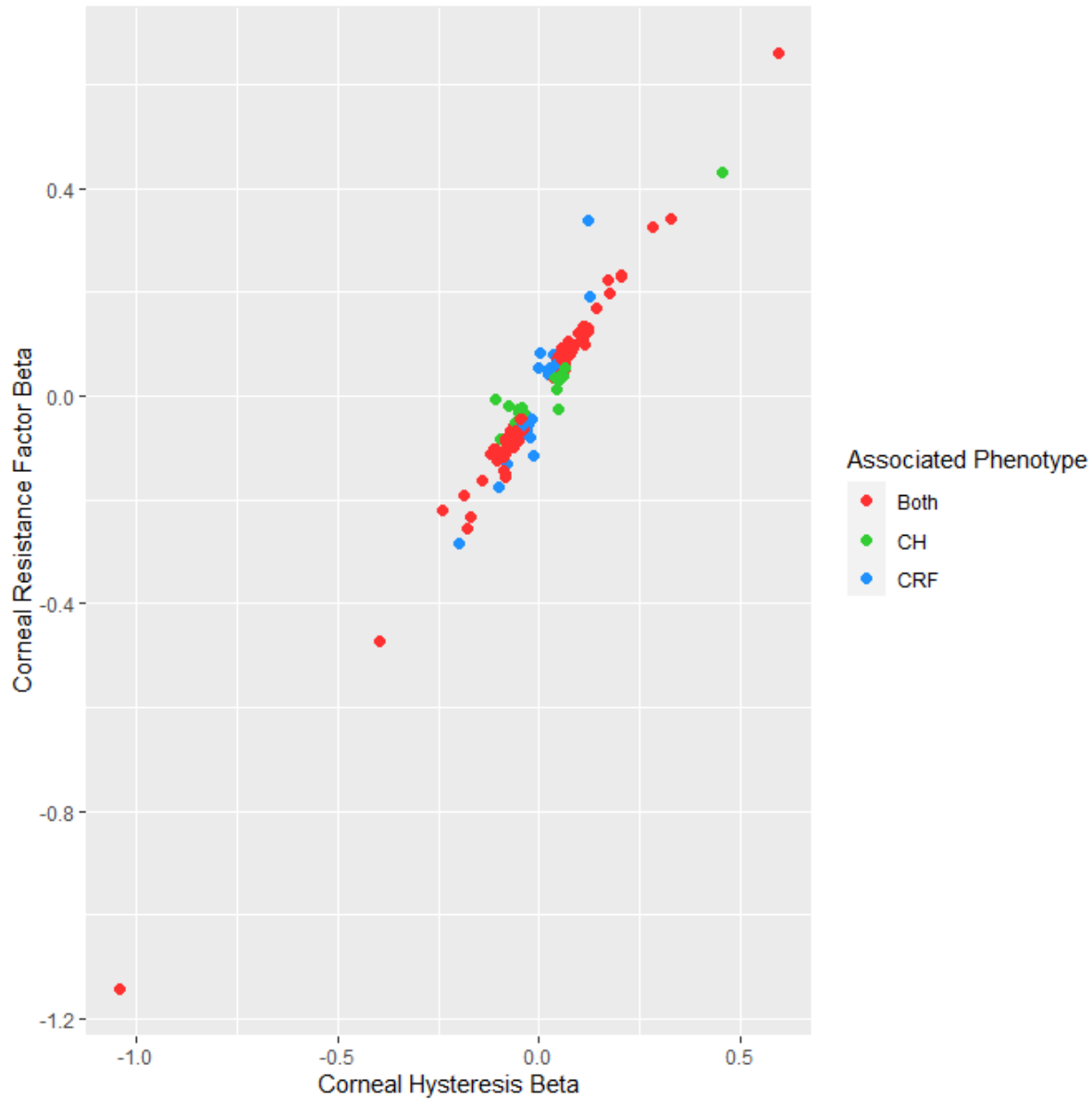


Figure 2 – A Miami plot for corneal hysteresis (top) and corneal resistance factor (bottom). Red line is set at genome-wide significance ($p=5 \times 10^{-8}$). Minimum p-value was set at $p=1 \times 10^{-30}$ for better graphical representation.

UNCORRECTED MANUSCRIPT

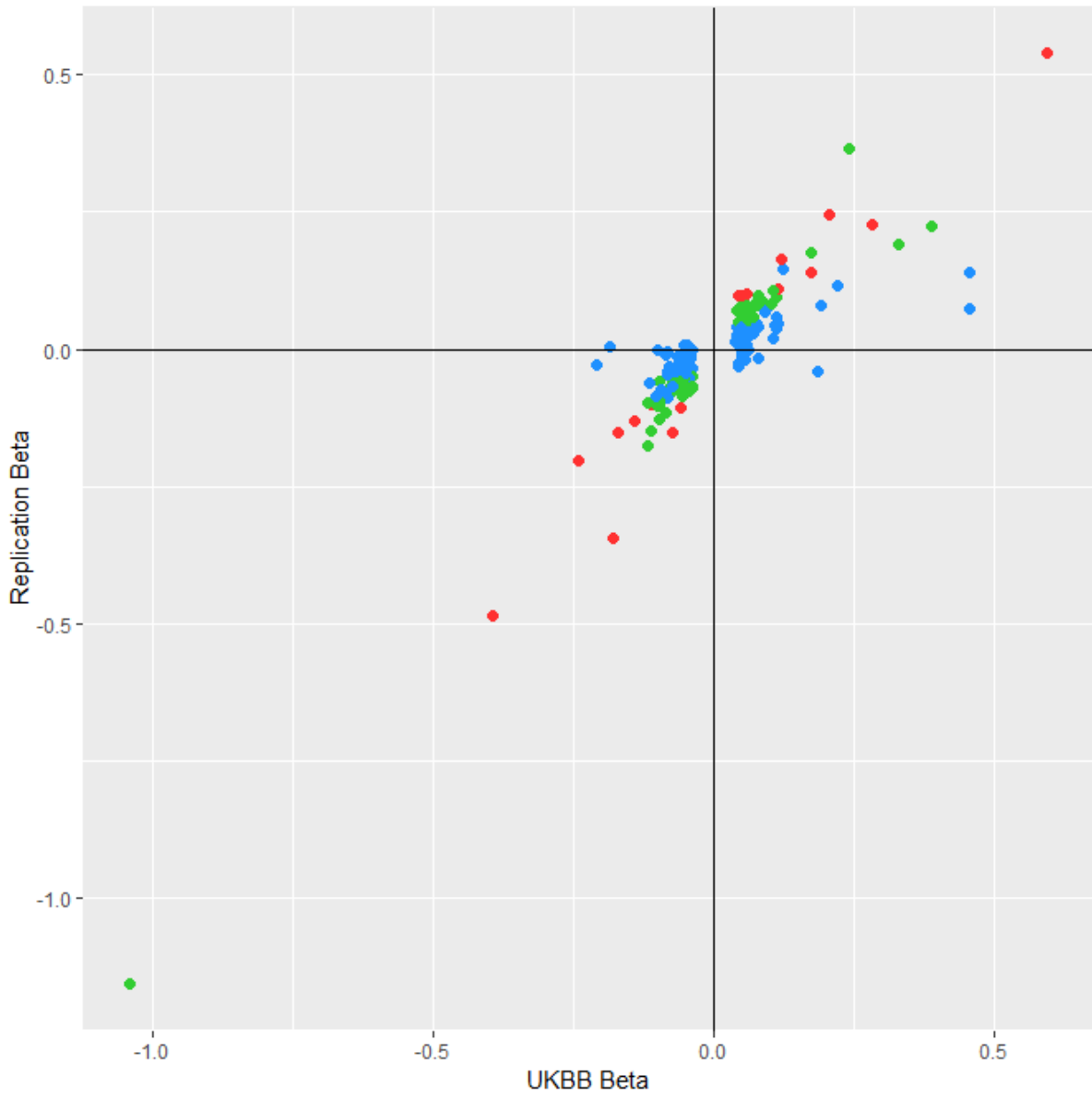


MANUSCRIPT

UCL

Figure 3 – A plot of the effect sizes for the lead SNPs from each region associated with either corneal hysteresis or corneal resistance factor. SNPs are colour coded to indicate which trait they are associated with at genome-wide significance ($p < 5 \times 10^{-8}$).

UNCORRECTED MANUSCRIPT

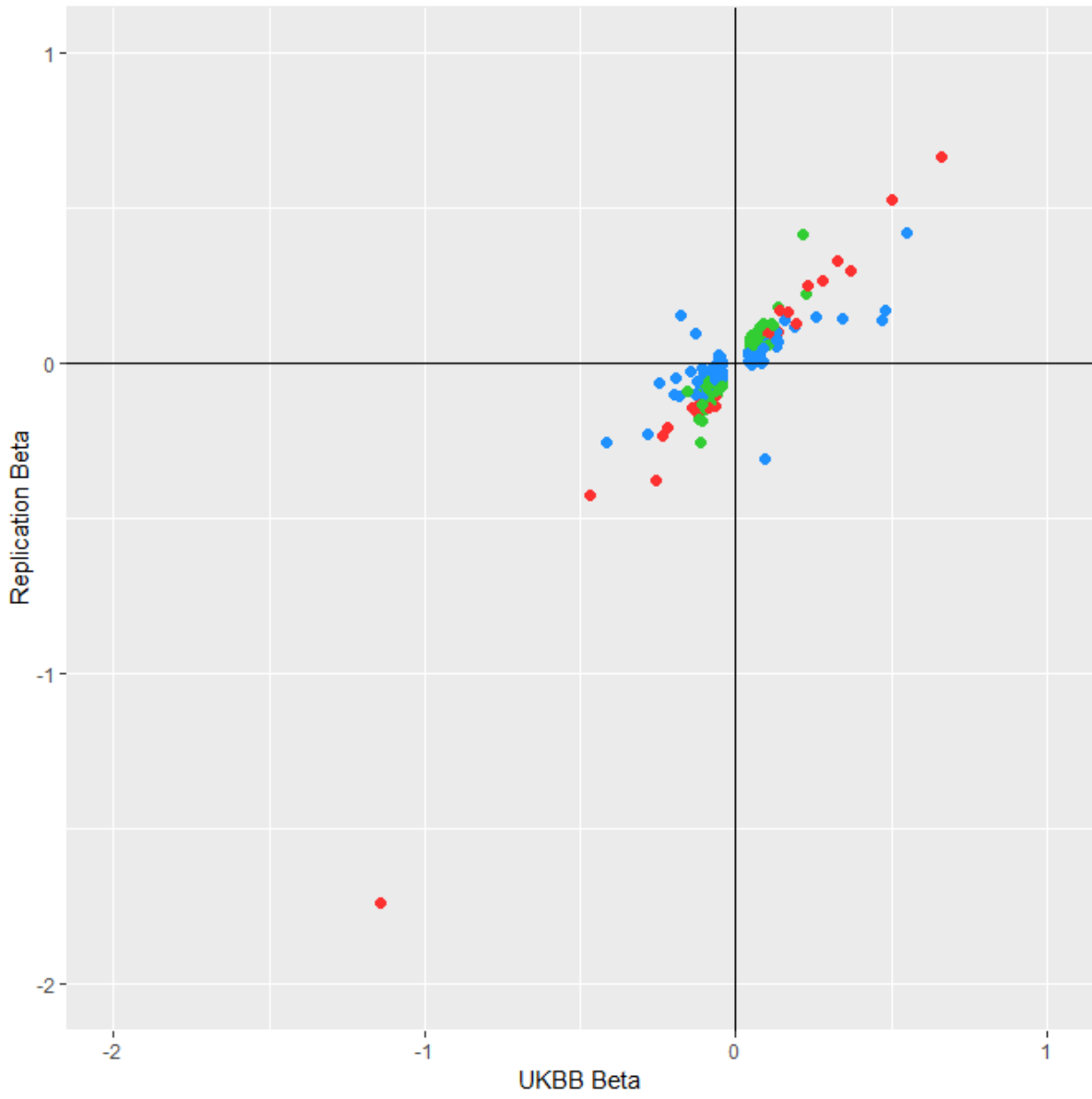


MANUSCRIPT

UCL

Figure 4a – Plot of conditional SNPs effect sizes for CH between the discovery and replication cohorts. Points are colour coded by their p-value in the replication cohort where red points reach Bonferroni corrected significance ($p < 2.5 \times 10^{-4}$), green points have nominal significance ($p < 0.05$), and blue have $p > 0.05$.

UNCORRECTED MANUSCRIPT



U₁

MANUSCRIPT

Figure 4b – Plot of conditional SNPs effect sizes for CRF between the discovery and replication cohorts. Points are colour coded by their p-value in the replication cohort where red points reach Bonferroni corrected significance ($p < 1.98 \times 10^{-4}$), green points have nominal significance ($p < 0.05$), and blue have $p > 0.05$.

Tables

Age group	Corneal Hysteresis			Corneal Resistance Factor		
	Mean (SD)/mmHg	% female	N	Mean (SD)/mmHg	% Female	N
40-49	11.01 (1.70)	54.6	21063	10.88 (1.89)	54.6	21060
50-59	10.78 (1.68)	55.6	34150	10.80 (1.84)	55.6	34146
60-70	10.43 (1.66)	50.9	50828	10.63 (1.80)	50.9	50824
All	10.68 (1.69)	53.2	106041	10.73 (1.84)	53.2	106030

Table 1 – Summary of phenotypic measurements, stratified by age group, of participants in the UK Biobank cohort included in these analyses

Exposure phenotype	Outcome phenotype	Number of SNPs	Model	Beta	SE	P-Value
CH	IOPcc	144	IVW	-0.128	0.024	<1E-3
			Egger	0.048	0.065	0.462
			Egger Intercept	-0.011	0.004	0.014
CRF	IOPcc	166	IVW	0.31	0.021	<1E-3
			Egger	0.005	0.054	0.928
			Egger Intercept	0.018	0.004	<1E-3
IOPcc	CH	99	IVW	-0.154	0.009	<1E-3
			Egger	-0.153	0.032	<1E-3
			Egger Intercept	0.002	0.004	0.537
IOPcc	CRF	96	IVW	0.137	0.01	<1E-3
			Egger	0.12	0.031	<1E-3
			Egger Intercept	0.002	0.004	0.54

Table 2 – Results from the best fitting models for Mendelian randomisation. For the model IVW is the penalized inverse weighted variance, Egger is the penalized Egger model, Egger Intercept is the corresponding intercept results for the given Egger results shown. Number of SNPs is the number of uncorrelated SNPs used as genetic instruments for each test.

Abbreviations

CH – Corneal hysteresis

CRF – Corneal resistance factor

ORA – Ocular Response Analyzer

CCT – Central corneal thickness

IOP – Intraocular pressure

FECD – Fuchs Endothelial Corneal Dystrophy

IOP_{cc} – Corneal-compensated intraocular pressure

POAG – Primary open-angle glaucoma

FDR – False discovery rate

UNCORRECTED MANUSCRIPT