

Characteristics and outcomes of COVID-19-associated stroke: a UK multicentre case-control study

Corresponding author: Richard J Perry (ORCID: 0000-0002-4536-9018). Email: richard.perry2@nhs.net.

Address: Box 119, National Hospital for Neurology & Neurosurgery, Queen Square, London WC1E 6BT

Richard J Perry^{1,2}, Craig J Smith^{3,4}, Christine Roffe^{5,6}, Robert J Simister^{1,2}, Saravanan Narayanamoorthi⁷, Richard Marigold⁸, Mark Willmot⁹, Anand Dixit¹⁰, Ahamad Hassan¹¹, Terry Quinn^{12,13}, Sandeep Ankolekar¹⁴, Liqun Zhang¹⁵, Soma Banerjee¹⁶, Urwah Ahmed⁹, Nishita Padmanabhan⁵, Phillip Ferdinand⁶, Frances McGrane¹³, Azra Banaras², Isobel H Marks¹⁶ and David J Werring^{1,2} for the SETICOS collaborators¹⁷.

1. Stroke Research Centre, UCL Queen Square Institute of Neurology, London, UK
2. Comprehensive Stroke Service, National Hospital for Neurology & Neurosurgery, UCL Hospitals NHS Foundation Trust, London, UK
3. Division of Cardiovascular Sciences, Lydia Becker Institute of Immunology and Inflammation, University of Manchester, Manchester, UK
4. Manchester Centre for Clinical Neurosciences, Manchester Academic Health Science Centre, Salford Royal NHS Foundation Trust, Salford, UK
5. Faculty of Medicine and Health Sciences, Keele University, Stoke-on-Trent, UK
6. Stroke Service, University Hospitals of North Midlands NHS Trust, Stoke-on-Trent, UK
7. Department of Stroke Medicine, Pennine Acute Hospitals NHS Trust, Greater Manchester, UK
8. Department of Stroke Medicine, University Hospital Southampton NHS Foundation Trust, Southampton, UK
9. Department of Neurology, University Hospitals Birmingham NHS Foundation Trust, Birmingham, UK
10. Department of Stroke Medicine, Newcastle upon Tyne Hospitals NHS Foundation Trust, Newcastle upon Tyne, UK
11. Department of Neurology, The Leeds Teaching Hospitals NHS Trust, Leeds, UK
12. Institute of Cardiovascular and Medical Sciences, University of Glasgow, Glasgow, UK
13. Stroke Service, Glasgow Royal Infirmary, Glasgow, UK
14. Department of Neurology, King's College Hospital NHS Foundation Trust, London, UK
15. Department of Neurology, St George's University Hospital NHS Foundation Trust, London, UK
16. Stroke Centre, Imperial College Healthcare NHS Foundation Trust, London, UK
17. A complete list of the SETICOS collaborators is given in the Supplementary Materials

Abstract word count: 250 words. Main manuscript word count: 3497 words.

ABSTRACT

Objective

We set out to determine which characteristics and outcomes of stroke are associated with COVID-19.

Methods

This case-control study included patients admitted with stroke to 13 hospitals in England and Scotland between 9th March and 5th July 2020. We collected data on 86 strokes (81 ischaemic strokes and 5 intracerebral haemorrhages) in patients with evidence of COVID-19 at the time of stroke onset (Cases). They were compared with 1384 strokes (1193 ischaemic strokes and 191 intracerebral haemorrhages) in patients admitted during the same time period who never had evidence of COVID-19 (Controls). In addition the whole group of stroke admissions, including another 37 in patients who appear to have developed COVID-19 after their stroke, were included in two logistic regression analyses examining which features were independently associated with COVID-19 status and with inpatient mortality.

Results

Cases with ischaemic stroke were more likely than ischaemic controls to occur in Asians (18.8% vs 6.7%, $p<0.0002$), were more likely to involve multiple large vessel occlusions (17.9% vs 8.1%, $p<0.03$), were more severe (median NIHSS 8 vs 5, $p<0.002$), were associated with higher D-dimer levels ($p<0.01$) and were associated with more severe disability on discharge (median mRS 4 vs 3, $p<0.0001$) and inpatient death (19.8% vs 9.6%, $p<0.0001$). Recurrence of stroke during the patient's admission was rare in Cases and Controls (2.3% vs 1.0%, NS).

Conclusions

Our data suggest that COVID-19 may be an important modifier of the onset, characteristics and outcome of acute ischaemic stroke.

INTRODUCTION

Coronavirus disease 2019 (COVID-19) is mainly recognised as a viral pneumonia, with a dry cough, high fever, shortness of breath and loss of taste and smell as its characteristic features¹. However the virus responsible for this illness, severe acute respiratory syndrome coronavirus 2 (SARS-CoV-2), may influence the presentation of ischaemic stroke², although this conclusion is controversial³ because of a lack of high quality evidence. In particular, the largest studies have compared patients with COVID-19-associated stroke with historical controls^{4,5}, whose strokes tend to be milder than those seen in contemporaneous controls^{6,7}, resulting in a bias towards overestimating the influence of COVID-19 on stroke severity and any other parameters correlated with severity.

Our objectives were to determine whether COVID-19 is associated with: a different demographic group; a higher proportion of ischaemic strokes; higher D-dimer values⁷ in ischaemic strokes, as may be expected of a SARS-CoV-2-related hypercoagulable state⁸; a different distribution of stroke mechanisms, possibly with a predominance of large vessel occlusions^{9,10}; more severe strokes with worse outcomes, including a higher inpatient mortality^{4,7}; a higher rate of early recurrence of stroke; and a delay between the onset of symptoms of infection and of stroke⁷. To address these objectives we analysed data from a multicentre case-control study of strokes in patients admitted to 13 stroke services in England and Scotland during the 2020 COVID-19 pandemic.

METHODS

Study design and participants

SETICOS (Service Evaluation of The Impact of COVID-19 On Stroke) is an ongoing project in 13 stroke centres across England and Scotland (Table S1, Supplementary Materials). Within this project, a case-control study was designed and reported according to STROBE guidelines¹¹. Approval was given by the clinical governance department in each individual hospital. The Health Research Authority confirmed that patient consent was not required for acquiring these surveillance data. There was a

combination of retrospective and prospective collection. The study protocol was distributed to partner sites on 8th April 2020 and the first CRF was received on 14th April 2020. Estimated premorbid modified Rankin scale and CT angiogram result were added to the list of fields on 29th April 2020 and our definition of recurrent stroke (see below) was clarified in data queries after data collection was complete.

Anonymized case report forms (CRFs) were completed for patients admitted with a clinical diagnosis of stroke according to World Health Organisation criteria¹². Patients with subarachnoid haemorrhage were excluded. We anticipated that most centres would not be able to collect data on consecutive stroke admissions throughout the whole study period, so centres were asked to prioritise weeks during which patients with COVID-19 were admitted, and for any such week (Monday to Sunday) to include all strokes regardless of SARS-CoV-2 status.

Clinical data were extracted from discharge summaries or clinical notes, blood results were taken from electronic results systems and CT and MR angiogram data were obtained from radiology reports. Disability on discharge was determined using the modified Rankin scale (mRS)¹³ which varies from zero (no symptoms) to 6 (death). For ischaemic strokes, the TOAST classification¹⁴ was either taken from the discharge summary or was inferred from the clinical team's documented assessment of likely stroke aetiology. TOAST categories 'other determined aetiology' and 'undetermined aetiology' were combined, as the choice between these two sub-groups would depend on whether the clinician regarded COVID-19 as a 'determined' cause of stroke. Data were checked centrally for omissions and inconsistencies and data queries were submitted to local centres until they were resolved.

Defining Cases (strokes in patients with SARS-CoV-2 at the time of stroke onset) and Controls

For our SARS-CoV-2-positive "Case" group, we included all strokes in patients who tested positive within 4 days of admission (or within 4 days of their stroke for inpatient strokes), even if they were

negative on their first test, because RT-PCR on respiratory samples has a low sensitivity for SARS-CoV-2¹⁵. These patients would be very unlikely to have acquired the infection in hospital and turned PCR-positive within such a short time¹⁶. We also included strokes in patients who already had clinical features suspicious of COVID-19 at the time of admission and were found to be SARS-CoV-2-positive at any point during the first 10 days of admission. The “Control” group consisted of patients who were either consistently SARS-CoV-2-negative or were never tested because they did not show symptoms or signs of COVID-19. Patients who were SARS-CoV-2 positive at some point during their admission but did not satisfy the criteria to be counted in the Case group were excluded from the case-control study but were included in the logistic regression analyses.

Definition of recurrent stroke

A recurrent stroke was defined as any new stroke occurring with an onset separate from that of the index stroke. If a recurrent stroke occurred within 21 days of the index stroke, and was in the same vascular territory, then it was only included if it additionally fulfilled at least one of the following two criteria: 1. there was a new area of acute infarction on neuroimaging, or 2. there was a new intracerebral haemorrhage anatomically separate from the infarct or haemorrhage of the index stroke.

Statistical methods

The sample size was determined pragmatically by the data collection that was feasible in each centre during the challenging circumstances of the COVID-19 pandemic, aiming for at least 500 patients in total and at least 80 Cases, sufficient to allow for logistic regression analyses¹⁷. Categorical variables were compared between Cases and Controls using the chi-squared test, except for stroke recurrence rates where Fisher’s exact test was used because the expected rate of recurrent stroke in Cases was fewer than 5 patients. D-dimer results were \log_{10} -transformed, resulting in distributions which approximated normal distributions, and then compared using Student’s t test (for a difference in the

means) and an F test (for a difference in the variances). Other continuous variables were compared using the Mann-Whitney U test.

Binary logistic regression (Newton's method), using demographics, vascular risk factors and stroke characteristics that differed between the Cases and Controls (threshold $p < 0.2$), was used to establish which of these variables were independently associated with COVID-19 at onset. A further binary logistic regression analysis examined whether COVID-19 at onset was independently associated with inpatient mortality, using known predictors of early mortality¹⁸ as covariates of no interest. Where the admission NIHSS or estimated pre-morbid mRS were not recorded, the median value for that covariate was entered in place of the missing data and a dummy covariate of no interest was added to the model, assigned a value of 1 for patients where the data point was missing and 0 for all other patients.

RESULTS

Data included in the study

We collected data from 1507 stroke admissions from the week commencing 9th March through to the week commencing 29th June, to 13 stroke centres distributed across England and Scotland (Table S1). Early in the study period patients were mainly tested for SARS-CoV-2 if there was clinical suspicion of COVID-19. Between the weeks commencing 9th March and 11th May, however, the proportion of asymptomatic patients tested rose progressively from 10.3% to 93.5%, and then remained at a mean of 95.3% for the rest of the study.

Among the 123 strokes in patients who were SARS-CoV-2-positive at some point, 86 occurred in patients who had evidence of the infection at the time of stroke onset and were defined as Cases (see Methods). Nine of these (10.4%) had no clinical features of COVID-19 during their admission. One Case was in a patient who had also been admitted with a previous Control stroke (without

COVID-19) earlier during the study period. 36 patients with COVID-19 were excluded from the case-control comparisons because they appear to have contracted the infection after their stroke (see Table S2 for their characteristics). One further Case with intracerebral haemorrhage was excluded because the date of stroke onset could not be estimated. The Control group consisted of 1384 strokes in 1377 patients. For 823 of these strokes the patient was negative on PCR (59.5%) and in 561 the patient was not tested because they never had clinical evidence of COVID-19 (40.5%). All 1507 strokes were included in logistic regression analyses.

	Cases	Controls	p value
All strokes	n = 86	n = 1384	
Age: median (IQR)	74.5 (67-84)	73 (61-82)	NS
Males (%)	47 (54.7)	731 (52.8)	NS
Ischaemic (%)	81 (94.2)	1193 (86.2)	0.03
Ethnicity	n = 74	n = 1076	
White (%)	53 (71.6)	886 (82.3)	0.02
Black (%)	7 (9.5)	98 (9.1)	NS
Asian (%)	13 (17.6)	79 (7.3)	0.002
Mixed / other (%)	1 (1.4)	13 (1.2)	NS
Disability prior to stroke	n = 84	n = 1369	
Premorbid mRS: median (IQR)	1 (0-3)	0 (0-2)	0.01
Admission stroke severity	n = 74	n = 1336	
NIHSS: median (IQR)	8 (3.25-17)	5 (2-13)	0.01
Respiratory support during admission	n = 86	n = 1369	
None required (%)	41 (47.7)	1236 (90.3)	<0.00001
O ₂ by nasal prongs (%)	22 (25.6)	66 (4.8)	<0.00001
O ₂ by mask (%)	15 (17.4)	42 (3.1)	<0.00001
Non-invasive ventilation (%)	1 (1.2)	6 (0.4)	NS
Intubation and ventilation (%)	7 (8.1)	19 (1.4)	<0.00001
Outcome measures	n = 86	n = 1384	
Length of stay in days: median (IQR)	7 (3-17)	3 (2-8)	<0.00001
mRS on discharge: median (IQR)	4 (2-5)	3 (1-4)	0.0004
Death during admission (%)	17 (19.8)	133 (9.6)	0.01
Recurrence during admission (%)	2 (2.3)	14 (1.0)	NS

Table 1. Stroke characteristics in Cases (with evidence of COVID-19 at stroke onset) and Controls (with no evidence of COVID-19 at any time), including ischaemic and haemorrhagic strokes. IQR: interquartile range; NIHSS: National Institutes of Health Stroke Scale; mRS: modified Rankin scale.

	Ischaemic strokes			Intracerebral haemorrhages		
	Cases	Controls	p value	Cases	Controls	p value
All strokes	n = 81	n = 1193		n = 5	n = 191	
Age: median (IQR)	74 (67-85)	73 (61-83)	NS	76 (67-80)	73 (61-80)	NS
Male (%)	44 (54.3)	633 (53.1)	NS	3 (60)	98 (51.3)	NS
Intravenous tPA (%)	10 (12.5)	185 (15.5)	NS			
Thrombectomy (%)	1 (1.3)	71 (6)	NS			
Ethnicity	n = 69	n = 939		n = 5	n = 137	
White (%)	48 (69.6)	785 (83.6)	0.003	5 (100)	101 (73.7)	NS
Black (%)	7 (10.1)	80 (8.5)	NS	0 (0)	18 (13.1)	NS
Asian (%)	13 (18.8)	63 (6.7)	0.0002	0 (0)	16 (11.7)	NS
Mixed / other (%)	1 (1.4)	11 (1.2)	NS	0 (0)	2 (1.5)	NS
Admission stroke severity	n = 70	n = 1159		n = 4	n = 177	
NIHSS: median (IQR)	8 (3.25-11)	5 (2-11)	0.002	9 (3.25-14.25)	10 (4-20)	NS
TOAST category	n = 72	n = 1156				
Large vessel atherosclerosis (%)	11 (15.3)	193 (16.7)	NS			
Cardioembolic (%)	23 (31.9)	291 (25.2)	NS			
Small vessel (%)	18 (25.0)	227 (19.6)	NS			
Other (%)	20 (27.8)	445 (38.5)	NS			
Fever/cough/SOB onset date	n = 45			n = 3		
[Symptom onset] - [stroke onset]: median in days (IQR)	-6 (-14 - 0)			+4 (+3 - +4)		
CT or MR angiogram	n = 39	n = 627				
No LVO (%)	23 (59.0)	362 (57.7)	NS			
Single LVO (%)	9 (23.1)	214 (34.1)	NS			
Multiple LVO (%)	7 (17.9)	51 (8.1)	0.03			
Full blood count	n = 81	n = 1173		n = 5	n = 188	
NLR: median (IQR)	4.7 (3.1-8.3)	3.3 (2.2-5.8)	0.00005	5.2 (3.7-8.9)	3.9 (2.2-7)	NS
Platelets: median (IQR)	251 (185-342)	241* (200.5-293)	NS	273 (230-275)	232 (185-293)	NS
CRP	n = 78	n = 1051		n = 5	n = 162	
CRP (mg/litre): median (IQR)	29.8 (7.4-114.9)	5 (1.9-14.3)	<0.00001	2.9 (1.6-5.2)	5 (2-13)	NS
D-dimer	n = 23	n = 177				
Log ₁₀ [D-dimer, ng/ml]: mean (SE)	3.4 (0.20)	3.0 (0.04)	0.01			
Outcome measures	n = 81	n = 1193		n = 5	n = 191	
Length of stay in days: median (IQR)	7 (3-17)	3 (2-7)	<0.00001	9 (7-11)	5 (2-10)	NS
mRS on discharge: median (IQR)	4 (2-5)	3 (1-4)	0.00003	4 (3-4)	4 (3-6)	NS
Death during admission (%)	16 (19.8)	82 (6.9)	0.00003	1 (20)	51 (26.7)	NS
Recurrence during admission (%)	2 (2.5)	12 (1.0)	NS	0 (0.0)	2 (1.0)	NS

Table 2. Comparisons between Cases and Controls shown separately for ischaemic strokes (blue columns) and intracerebral haemorrhages (red columns). IQR: interquartile range; NIHSS: National Institutes of Health Stroke Scale; mRS: modified Rankin scale; NLR: neutrophil-to-lymphocyte ratio; SE: standard error. For [symptom onset – stroke onset], a negative value indicates that symptoms of infection occurred first. *Omitting 5 patients in whom the platelets clumped

Demographics and stroke characteristics

Ethnicity was recorded in 86.0% of Cases and 77.7% of Controls. The proportion of Asian patients among Cases (17.6%) was more than twice that seen in the Controls (7.3%, $p < 0.002$, Table 1), a disparity entirely attributable to the difference found in the ischaemic stroke group (18.8% vs 6.7%, $p < 0.0002$, Table 2). There was a correspondingly lower proportion of White patients among Cases (Table 1 and Supplementary Figure S1). There was no significant difference in the proportion of Black patients between the two groups. Age and sex also did not differ between the two groups (Supplementary Figure S2 and Table 1).

There was a higher proportion of ischaemic strokes in the Cases (94.2%) compared with the Controls (86.2%, $p = 0.03$). Among ischaemic strokes that were classified according to TOAST criteria¹⁴, there were no significant differences in the proportions of stroke attributed to large vessel atherosclerosis, cardioembolism or small vessel disease (Table 2).

D-dimers

In the patients with ischaemic stroke, D-dimers were measured in 23/81 (28.4%) of Cases and 177/1193 (14.8%) of Controls; the distributions are shown on a \log_{10} scale in Figure 1. Treating the two distributions in Figure 1 as normal distributions of potentially differing variance, the Cases had a significantly higher mean \log_{10} D-dimer (3.4) compared with the Controls (3.0, $p < 0.01$) and also a higher variance (standard deviation 0.83 vs 0.63, $p < 0.03$), i.e. there was a broader distribution of D-dimers in Cases, rather than a rightward shift of the whole curve.

Timing of COVID-19 and stroke onsets

In the 44 Cases with ischaemic stroke in whom both dates were recorded, the onset of the COVID-19-relevant symptoms of fever, cough or dyspnoea occurred a median of 6 days before the stroke onset (shown as minus 6 in Table 2). For the 3 Cases with intracerebral haemorrhage who had both

dates recorded, the COVID-19 symptoms occurred a median of 4 days *after* the stroke onset, and although the numbers are small, the difference between these two medians was significant ($p < 0.002$).

Stroke severity on admission

Figure 2 shows the distributions of ischaemic stroke severities on admission for Cases and Controls, measured using the NIHSS. Ischaemic strokes were significantly more severe in the Cases (median NIHSS = 8) than the Controls (median NIHSS = 5, $p < 0.002$). In patients with intracerebral haemorrhage, however, we did not find any significant difference in stroke severity between the two groups (median NIHSS = 9 and 10, Table 2).

Intracranial large vessel occlusion

Among patients with ischaemic stroke, a CT or MR angiogram was available in 39/81 Cases (48.1%) and 627/1193 Controls (52.6%). The proportion of patients with at least one intracranial large vessel occlusion (LVO) was not significantly different between Cases and Controls, whether expressed as a proportion of the patients who had this imaging done (41.0% vs 42.3%) or as a proportion of the whole stroke group (19.7% vs 22.2%). However, of the patients who had CT or MR angiography, the proportion of Cases with multiple intracranial LVOs (17.9%) was more than twice that seen in Controls (8.1%, $p < 0.03$; Figure 3).

Features independently associated with COVID-19 status

We used binary logistic regression to assess which demographics, vascular risk factors and stroke characteristics recorded on admission were independently associated with COVID-19 at stroke onset. Asian ethnicity and multiple intracranial large vessel occlusions on CT or MR angiography were independently associated with COVID-19 at stroke onset, whilst pre-morbid mRS narrowly missed statistical significance (Table 3). In a sensitivity analysis the pattern of results was not

significantly affected by omission of the 37 patients who developed COVID-19 but did not fulfil the criteria for Cases.

	Odds ratio	95% CI		p-value
Asian	2.70	1.38	5.30	0.004
> 1 LVO	2.62	1.11	6.15	0.03
Premorbid mRS	1.16	0.99	1.35	0.07
Current smoker	0.50	0.21	1.19	0.12
Admission NIHSS	1.02	0.99	1.05	0.14
Type 2 diabetes	1.28	0.77	2.12	0.34

Table 3. Binary logistic regression analysis to explore the association of demographics, vascular risks factors and stroke characteristics on admission with COVID-19 at the time of stroke. Covariates are shown in order of statistical significance. CI: confidence intervals; >1 LVO: more than one large-vessel occlusion.

Outcome from stroke

Stroke recurrence during admission was very rare in Cases (2.3%) and in Controls (1.0%) and with such small numbers it was not possible to demonstrate any significant difference between these groups, whether we included all strokes (Table 1) or just ischaemic strokes (Table 2). The rates in Cases and Controls are in any case not directly comparable as Cases had a longer median length of stay (Table 1).

The proportion of ischaemic strokes resulting in death during admission was significantly higher in Cases (19.8%) than in Controls (6.9%, $p < 0.00003$, Table 2) and the median mRS on discharge was higher in ischaemic Cases (median mRS = 4) than in ischaemic Controls (median mRS = 3, $p < 0.00003$, Figure 4). Among intracerebral haemorrhages, we were unable to demonstrate any significant difference in disability or mortality between the 5 Cases (median mRS = 4, mortality 20.0%) and the 191 Controls (median mRS 4, mortality 26.7%). COVID-19 at the onset of the stroke was independently associated with death during admission, even after correction for parameters known to be associated with early mortality¹⁸ (Table 4).

	Odds ratio	95% CI		p-value
Admission NIHSS	1.16	1.13	1.19	<0.00001
Intracerebral haemorrhage	3.19	1.99	5.11	<0.00001
Age (per year)	1.03	1.01	1.04	0.002
Ischaemic heart disease	1.92	1.21	3.02	0.005
COVID-19 at stroke onset	2.11	1.08	4.13	0.03
Premorbid mRS	1.12	0.98	1.30	0.11
Type 2 diabetes mellitus	1.37	0.86	2.19	0.19
Small vessel ischaemic stroke	0.64	0.29	1.42	0.27

Table 4. Binary logistic regression analysis demonstrating that COVID-19 at stroke onset is associated with inpatient mortality even after correction for other clinical features known to be predictors of early mortality⁽¹⁸⁾. CI: confidence interval; NIHSS: National Institutes of Health Stroke Scale; ICH: intracerebral haemorrhage.

DISCUSSION

This UK-based multicentre study provides a large case-control comparison, with contemporaneous controls, of strokes with and without COVID-19. Ischaemic strokes which were associated with COVID-19 at onset were: more likely to occur in Asian people; more likely to involve multiple large vessel occlusions; more severe; associated with higher D-dimer levels; and more likely to have a worse functional outcome or result in death. These findings add substantially to the previous smaller and methodologically limited studies, summarised in a recent systematic review², to confirm that COVID-19 has an important influence over the onset, characteristics and outcome of acute ischaemic stroke.

Previous case series suggested that COVID-19 may be associated with a higher proportion of strokes with large vessel occlusions^{2,9,10} and this conclusion was confirmed in a single case-control study¹⁹. In our study, by contrast, the overall incidence of at least one large vessel occlusion was the same in the Case and Control groups. The proportion of Cases with multiple large vessel occlusions, however, was more than twice that seen in the Control group.

Large vessel occlusion in COVID-19 may be a direct manifestation of a SARS-CoV-2-related hypercoagulable state, in which D-dimers are elevated^{7,9}. In our study, not only was the mean log₁₀

D-dimer higher in Cases than in Controls, but also the variance of \log_{10} D-dimers was higher in Cases, suggesting greater heterogeneity in this group; one potential explanation would be the presence of a sub-group with higher D-dimers associated with a SARS-CoV-2-related coagulopathy.

Our finding that ischaemic stroke associated with COVID-19 is more severe than in patients without COVID-19 is consistent with a small case-control study from New York, which reported more severe strokes in 32 patients with COVID-19 (median NIHSS = 19) than in 46 contemporaneous control patients without the infection (median NIHSS = 8)⁷. However, strokes in their contemporaneous control group were considerably more severe than they were in their historical controls (median NIHSS = 3). The difference presumably reflects a strong tendency for patients with minor stroke to stay away from hospital during the pandemic, or for doctors to avoid admitting them. Although we have observed the same effect in the UK⁶, the degree of exclusion of minor strokes during the pandemic appears to have been less pronounced in our study (Control group median NIHSS = 5). This disparity may reflect differences in public behaviour during the pandemic in different populations, or differences in admission strategies between the group of UK hospitals included in our study and the private healthcare organisation (NYU Langone Health) in the New York study.

The shift towards greater stroke severity in COVID-19-negative patients during the pandemic⁶ means that registry studies comparing cases of COVID-19-associated stroke with historical controls^{4,5} are biased towards overestimating any influence of COVID-19 on stroke severity, and other correlated parameters such as the incidence of large vessel occlusions and inpatient mortality rate, because historical controls have milder strokes than contemporaneous controls⁷. We have avoided this bias by comparing our COVID-19 Cases with contemporaneous Controls. Even so, outcomes were still worse in Cases than Controls in our study, and in particular the inpatient mortality rate in our Cases was significantly higher, a finding that remained after correction for other known risk factors for early inpatient mortality¹⁸.

We found no evidence to support previous suggestions that SARS-CoV-2 infection may be associated with a younger age^{7,10} or male sex⁷ in stroke patients. In the case-control study from New York⁷, by contrast, patients with COVID-19-associated strokes were younger (median 63 years) than controls (70 years). Most of their patients with COVID-19-associated stroke presented with COVID-19 as their primary diagnosis, so a likely explanation for this disparity is that, in their study, older patients with COVID-19 as their primary diagnosis may have been less likely to present and be admitted to hospital during the pandemic than younger patients.

There was a median delay of 6 days from the onset of COVID-19 symptoms to the onset of ischaemic stroke, perhaps corresponding to the reported delay between COVID-19 onset and the development of a hypercoagulable state⁸. However, COVID-19 does not appear to influence stroke solely through a single mechanism; no single aetiological category of ischaemic stroke seems to have been more strongly associated with COVID-19 infection than the others. We suggest that COVID-19 may provoke the onset of an ischaemic stroke through a variety of thrombotic and inflammatory mechanisms, promoting generation of thrombus in the heart²⁰ or large vessels^{10,21} or via small vessel occlusion²². Which of these mechanisms manifests in a given patient may be determined by that individual's conventional vascular risk factors such as atrial fibrillation, large vessel atheroma, hypertension or type 2 diabetes mellitus.

Strengths of our study are that we included patients from 13 centres across the UK, so our results may be more representative of the overall stroke population than existing studies from a single hospital system or city. The use of contemporaneous controls allowed us to draw conclusions about the influence of COVID-19 on stroke severity, mortality and the incidence of large vessel occlusion, inferences that cannot be made in studies comparing registry data with historical controls. In addition the study was conducted according to a protocol agreed upon early in the pandemic, before the frequency of cases in the UK had reached its peak.

The main limitation of this study is that we were only able to report investigations done as part of routine clinical care. Some reports or tests were not available in all patients, which could introduce reporting or indication biases. For example, if there were a higher rate of reporting of ethnicity in Cases compared Controls only in Asians, this reporting bias could in theory have exaggerated the association between Asian patients and COVID-19, although such a specific reporting bias seems implausible.

D-dimers were measured in a higher proportion of Cases (28.4%) than Controls (14.8%), suggesting that the criteria for measuring them may have been narrower in the Control group. Assuming that narrower test criteria select patients with higher D-dimers, there may have been a bias towards higher D-dimers in Controls, resulting in an underestimate of the difference in D-dimers between the two groups. Although an indication bias could also have operated in the selection of patient for CT angiography, reassuringly we found no evidence of any bias towards performing this imaging in patients with COVID-19.

Not all Control patients were tested for SARS-CoV-2, so this group may have included patients with asymptomatic infection. In addition, we were reliant on SARS-CoV-2 RT-PCR results from respiratory swabs for COVID-19 diagnosis and this test has a very poor sensitivity¹⁶. However, the large size of our Control group will have minimized the influence of false-negative COVID-19 results over this group.

If patients with minor stroke were more likely to attend if they had symptoms of COVID-19, then this effect could have reduced the median NIHSS in Cases, causing us to underestimate the difference in stroke severity between Cases and Controls. Finally some COVID-19-associated strokes may have been missed in patients in whom clinical assessment was hampered by very severe COVID-19 infection.

Our study provides the most compelling evidence yet that COVID-19-associated ischaemic strokes are more severe and more likely to result in severe disability or death, although the outlook is not quite as bleak as previous studies have suggested^{7,8}. Our results suggest the following recommendations for management of stroke patients during the ongoing COVID-19 pandemic.

If at any point a stroke centre is not routinely testing all stroke admissions for SARS-CoV-2, patients presenting with ischaemic stroke and very elevated D-dimers with no other explanation should be considered for testing, even if the clinical suspicion of COVID-19 is otherwise low. Criteria for requesting CT angiography in stroke patients may now need to take account of their COVID-19 status, because the finding of multiple large vessel occlusions may require a specific management strategy such as mechanical thrombectomy or possibly, in the future, a different antithrombotic agent. On the other hand, in most patients with COVID-19-associated ischaemic stroke, very early anticoagulation is probably not warranted as a strategy to prevent inpatient stroke recurrence, as this outcome is too uncommon to justify the increased risk of secondary haemorrhage.

REFERENCES

1. Docherty A, Harrison EM, Green CA, *et al.* Features of 20 133 UK patients in hospital with covid-19 using the ISARIC WHO Clinical Characterisation Protocol: prospective observational cohort study., *British Medical Journal* 2020;**369**:p.m1985.
2. Tan Y-K, Goh C, Leow AST, *et al.* COVID 19 and ischemic stroke: a systematic review. *Journal of Thrombosis and Thrombolysis* 2020; published online Jul 13. DOI:10.1007/s11239-020-02228-y.
3. Morelli N, Spallazzi M, Rota E, Michieletti E. Occam's Razor, Stroke and COVID-19. *American Journal of Neuroradiology* 2020; published online Jul 9. DOI:10.3174/ajnr.A6656.
4. Ntaios G, Michel P, Georgiopoulos G, *et al.* Characteristics and Outcomes in Patients With COVID-19 and Acute Ischemic Stroke. *Stroke* 2020; published online Jul 9. DOI:10.1161/STROKEAHA.120.031208.
5. Katz JM, Libman RB, Wang JJ *et al.* Cerebrovascular Complications of COVID-19. *Stroke* 2020; published online Aug 6. <https://doi.org/10.1161/STROKEAHA.120.031265>.
6. Perry RJ, Banaras A, Werring DJ, Simister R. What has caused the fall in stroke admissions during the COVID-19 pandemic? *Journal of Neurology*, 2020; published online Jun 29. <https://doi.org/10.1007/s00415-020-10030-2>.
7. Yaghi S, Ishida K, Torres J, *et al.* SARS2-CoV-2 and stroke in a New York healthcare system. *Stroke* 2020;**51**:2002–2011.
8. Tang N, Li D, Wang X, Sun Z. Abnormal coagulation parameters are associated with poor prognosis in patients with novel coronavirus pneumonia. *Journal of Thrombosis and Haemostasis* 2020;**18**:844–847.

9. Beyrouti R, Adams ME, Benjamin L, *et al.* Characteristics of ischaemic stroke associated with COVID-19. *Journal of Neurology, Neurosurgery and Psychiatry* 2020; published online Apr 30. DOI:10.1136/jnnp-2020-323586.
10. Oxley TJ, Mocco J, Majidi S, *et al.* Large-vessel stroke as a presenting feature of Covid-19 in the young. *New England Journal of Medicine*, 2020;**382**:e60.
11. Vandembroucke JP, von Elm E, Altman DG, *et al.* Strengthening the reporting of observational studies in epidemiology (STROBE): Explanation and elaboration. *PLoS Medicine* 2007;**4**:e297.
12. Aho K, Harmsen P, Hatano S, *et al.* Cerebrovascular disease in the community: results of a WHO Collaborative Study. *Bulletin of the World Health Organisation* 1980;**58**:113–130.
13. van Swieten JC, Koudstaal PJ, Visser MC, *et al.* Interobserver agreement for the assessment of handicap in stroke patients. *Stroke* 1988;**19**:604-607.
14. Adams Jr HP, Bendixen BH, Kappelle LJ, *et al.* Classification of subtype of acute ischemic stroke. Definitions for use in a multicenter clinical trial. TOAST. Trial of Org 10172 in Acute Stroke Treatment. *Stroke* 1993;**24**:35–41.
15. Woloshin S, Patel N, Kesselheim A. False negative tests for SARS-CoV-2 infection - challenges and implications. *New England Journal of Medicine*, 2020;**383**:e38.
16. Kucirka L, Lauer S, Laeyendecker O, *et al.* Variation in False-Negative rate of reverse transcriptase polymerase chain reaction–based SARS-CoV-2 tests by time since exposure. *Annals of Internal Medicine*, 2020; published online May 13. DOI:10.7326/M20-1495.
17. Bujang MA, Sa'at N, Abu TMITAB, *et al.* Sample Size Guidelines for Logistic Regression from Observational Studies with Large Population: Emphasis on the Accuracy Between Statistics and

Parameters Based on Real Life Clinical Data. *Malaysian Journal of Medical Sciences* 2018;**25**:122–130.

18. Gattringer T, Posekany A, Niederkorn K, *et al.* Predicting Early Mortality of Acute Ischemic Stroke. *Stroke* 2019;**50**:349–356.

19. Kihira S, Schefflein J, Mahmoudi K, *et al.* Association of Coronavirus Disease (COVID-19) With Large Vessel Occlusion Strokes: A Case-Control Study. *American Journal of Roentgenology* 2021;**216**:1-6.

20. Ford JS, Holmes JF, Jones RF. Cardioembolic Stroke in a Patient with Coronavirus Disease of 2019 (COVID-19) Myocarditis: A Case Report. *Clinical Practice and Cases in Emergency Medicine* 2020; published online Jun 22. DOI:10.5811/cpcem.2020.6.47856

21. Mohamud AY, Griffith B, Rehman M, *et al.* Intraluminal Carotid Artery Thrombus in COVID-19: Another Danger of Cytokine Storm? *American Journal of Neuroradiology* 2020; published online Jul 2. DOI:10.3174/ajnr.A6674.

22. Nicholson P, Alshafai L, Krings T. Neuroimaging Findings in Patients with COVID-19. *American Journal of Neuroradiology* 2020; published online Jun 11. DOI:10.3174/ajnr.A6630.

FIGURE LEGENDS (colour versions)

Figure 1. Distribution of D-dimers (in ng/ml), in Cases (red curve) and Controls (blue curve) with ischaemic stroke, plotted on a \log_{10} scale. Bin width of \log_{10} D-dimer = 0.25. Value shown on X axis is the lower value of each bin. The value on the Y axis is the percentage of D-dimer results falling within that range of values. Each red arrow indicates one Case who was anticoagulated for a DVT or PE during their admission, and each blue arrow a Control who was anticoagulated for this indication.

Figure 2. Distributions of NIHSS scores in Cases (red bars) and Controls (blue bars) with ischaemic stroke. For each NIHSS range, the frequency of Cases is shown as a percentage of the Cases in which the NIHSS was measured, and similarly for Controls. NIHSS: National Institutes of Health Stroke Scale. Bin width = 2.

Figure 3. Relationship between CT or MR angiogram findings and COVID-19 status in patients with ischaemic stroke. For Cases and Controls, dark blue bars show the proportion of those scanned in whom more than one intracranial large vessel occlusion (LVO) was reported, mid blue bars show the proportion in whom only one LVO was reported, and pale blue bars show the proportion in whom no LVO was reported.

Figure 4. The distribution of modified Rankin (mRS) scores on discharge in Cases and Controls with ischaemic stroke. The mRS indicates the degree of disability: for example zero (in the palest blue) represents no symptoms, 1 represents symptoms without disability, 5 represents severe disability and 6 (in the darkest blue) represents death during admission.

FIGURE LEGENDS (monochrome versions)

Figure 1. Distribution of D-dimers (in ng/ml), in Cases (black circles) and Controls (grey triangles) with ischaemic stroke, plotted on a \log_{10} scale. Bin width of \log_{10} D-dimer = 0.25. Value shown on X axis is the lower value of each bin. Each black arrow indicates one Case who was anticoagulated for a DVT or PE during their admission, and each grey arrow a Control who was anticoagulated for this indication.

Figure 2. Distributions of NIHSS scores in Cases (black bars) and Controls (grey bars) with ischaemic stroke. For each NIHSS range, the frequency of Cases is shown as a percentage of the Cases in which the NIHSS was measured, and similarly for Controls. NIHSS: National Institutes of Health Stroke Scale. Bin width = 2.

Figure 3. Relationship between CT angiogram findings and COVID-19 status in patients with ischaemic stroke. For Cases and Controls who had a CT or MR angiogram, black bars show the proportion in whom more than one intracranial large vessel occlusion (LVO) was reported on CT, dark grey bars show the proportion in whom only one LVO was reported, and light grey bars show the proportion in whom no LVO was reported.

Figure 4. The distribution of modified Rankin (mRS) scores on discharge in Cases and Controls with ischaemic stroke. The mRS indicates the degree of disability: for example zero (white) represents no symptoms, 1 represents symptoms without disability, 5 represents severe disability and 6 (black) represents death during admission.

FOOTNOTES

Contributors

RJP, RS and DJW conceived the study. RJP wrote and distributed the protocol, designed the case report form and registration log, recruited centres to the study, received the case report forms and uploaded them into the database, performed statistical analyses and wrote the manuscript. RJP, CJS, CR, RJS and DJW were the members of the Core Writing Group and critically reviewed the protocol, case report form and manuscript. CJS, CR, SN, RM, MW, AD, AH, TQ, SA, LZ, AB and SB obtained approval for the study at their respective sites and took overall responsibility for the submission of accurate data. SN, RM, MW, TQ, UA, NP, PF, FG, AB, and IM extracted data from clinical records and completed case report forms, working alongside collaborators listed in the Supplementary Materials. All authors critically reviewed the manuscript and approved the final version.

Collaborators

Birmingham: Amy Hoare, Laura Standing. *Fairfield, Greater Manchester:* Shabaz Aiaz, Bimal Chakraborty, Ben Debbage, Marwa Eltemamy, Natalie Greaves, Erica Greenhalgh, Sabbiha Nadia Majumder, Surojit Sen. *Glasgow Royal Infirmary:* Anna Fleck, Thomas French, Sinead Oxley. *Imperial, London:* Madison Brown. *King's College Hospital and Princess Royal Hospital, London:* John Aeron-Thomas, Fong Chan, Elliott Smith, Con Tibajia, Maria Garcia Pardo. *Leeds:* Nathan Douglas, Linetty Makawa, Emelda Veraque, Dean Waugh. *Newcastle:* Beth Atkinson, Eleanor Cameron, Stephen Woodward, Michelle Fawcett. *Salford Royal Hospital, Greater Manchester:* Sarah Heathcote, Neil Holden. *Southampton:* Fern Fox, Mariana Ferreira, Stacey Valentine. *Stoke-on-Trent:* Rachel Gunston. *St George's, London:* Lauren Binnie, Gillian Cluckie, Rita Ghatala, Kate Kennedy, Sarah Trippier, Cai Hua Sim, Rebecca Williams. *UCL Hospitals London:* Cyrille Cahoy, Lucinda Crook, Nina Francia, Florence Mantey, Marilena Marinescu, Sabaa Obarey, Sifelani Tshuma. *Case report form implementation:* Madeleine Perry. *Data cleaning:* Suzanna Perry.

Declaration of interests

CJS has received honoraria from Bayer, Sanofi and Pfizer unrelated to the work presented here. DJW has received personal fees from Bayer, Alnylam and Portola, not related to the work presented here.

Acknowledgements

The authors would like to thank the whole team of SETICOS collaborators who undertook their tasks largely on a voluntary basis during the exceptionally challenging time of the COVID-19 pandemic.

We would also like to thank the two anonymous reviewers who, on behalf of this journal, gave us important detailed feedback on an earlier version of this manuscript. This work was undertaken at

UCL Hospitals / UCL which receives a proportion of funding from the Department of Health's

National Institute for Health Research (NIHR) Biomedical Research Centres funding scheme.

Approvals for study

Approval for the study was given by the clinical governance department in each individual hospital.

The Health Research Authority confirmed that patient consent was not required for acquiring these surveillance data.

Figures

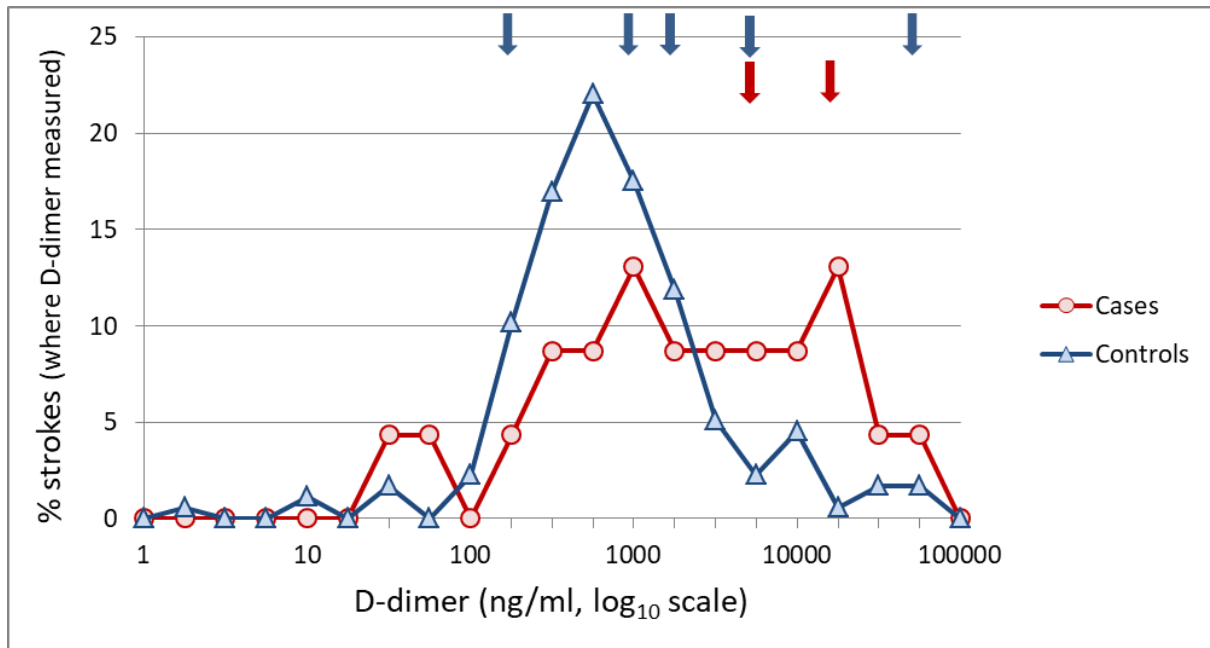


Figure 1. Distribution of D-dimers (in ng/ml), in Cases (red curve) and Controls (blue curve) with ischaemic stroke, plotted on a \log_{10} scale. Bin width of \log_{10} D-dimer = 0.25. Value shown on X axis is the lower value of each bin. Each red arrow indicates one Case who was anticoagulated for a DVT or PE during their admission, and each blue arrow a Control who was anticoagulated for this indication.

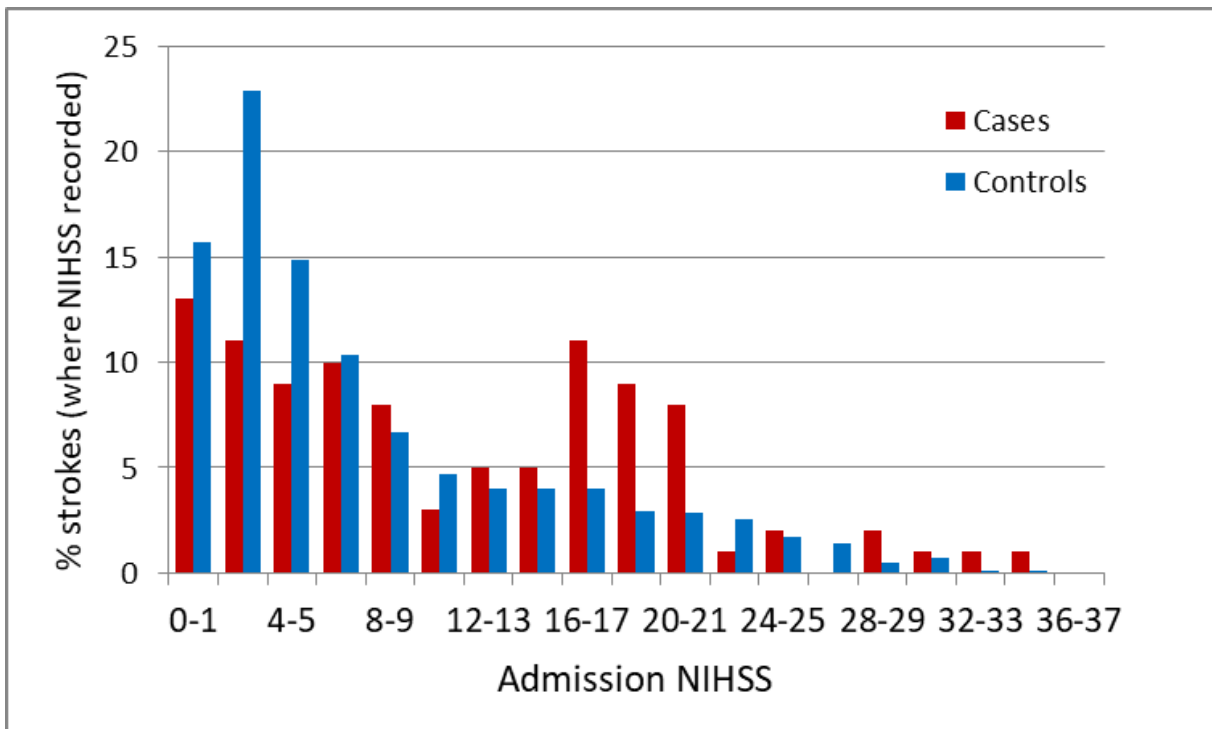


Figure 2. Distributions of NIHSS scores in Cases (red bars) and Controls (blue bars) with ischaemic stroke. NIHSS: National Institutes of Health Stroke Scale. Bin width = 2.

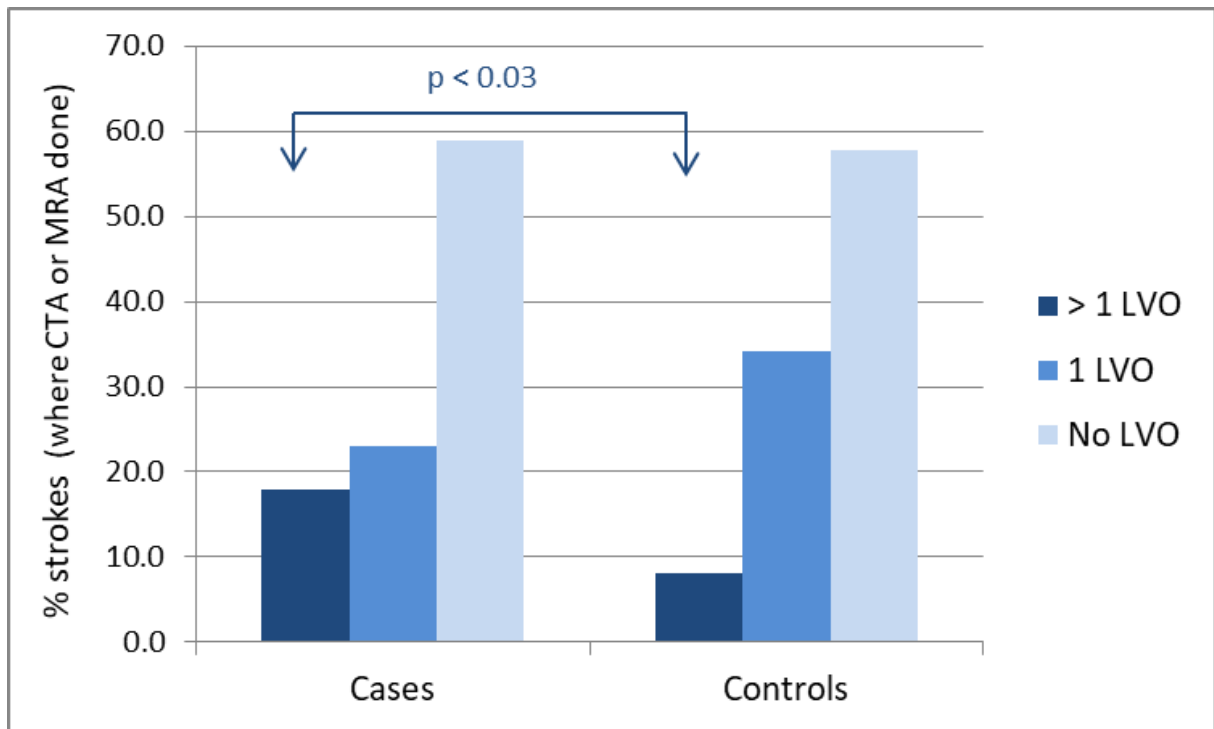


Figure 3. Relationship between CT angiogram findings and COVID-19 status in patients with ischaemic stroke. For Cases and Controls who had a CT or MR angiogram, dark blue bars show the proportion in whom more than one intracranial large vessel occlusion (LVO) was reported on CT, mid blue bars show the proportion in whom only one LVO was reported, and pale blue bars show the proportion in whom no LVO was reported.

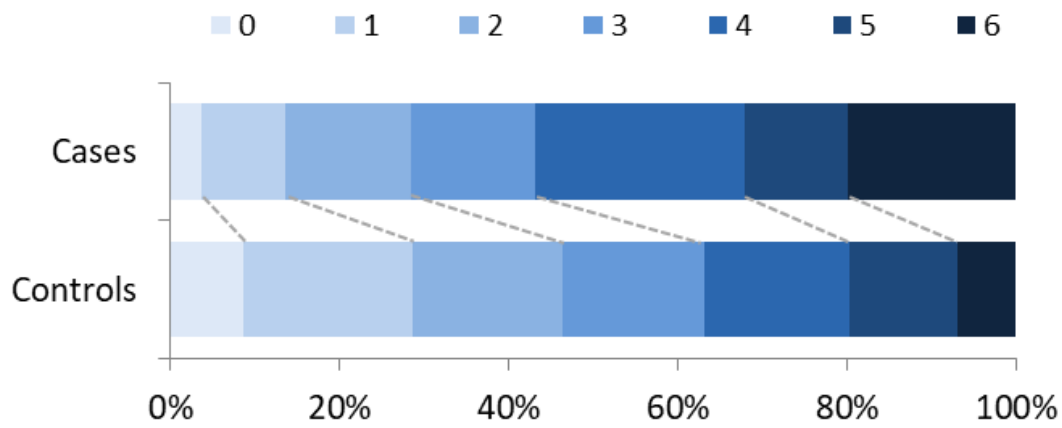


Figure 4. The distribution of modified Rankin (mRS) scores on discharge in Cases and Controls with ischaemic stroke. The mRS indicates the degree of disability: for example zero (in the palest blue) represents no symptoms, 1 represents symptoms without disability, 5 represents severe disability and 6 (in the darkest blue) represents death during admission.

Supplementary materials for Perry *et al.* (2020):

Characteristics and outcomes of COVID-19-associated stroke: a UK multicentre case-control study.

Supplementary figures

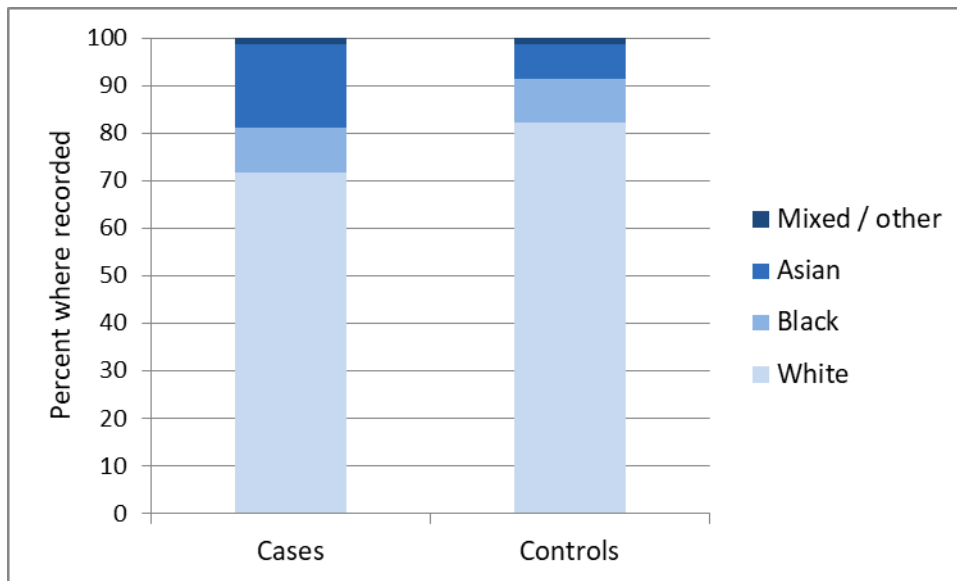


Figure S1. Ethnicity in Cases and Controls, including all strokes. Among patients presenting with stroke, the proportion (%) of patients in each ethnicity category is shown separately for Cases (with evidence of COVID-19 at the onset of their stroke according to the definition given in the Methods section) compared with Controls (negative on testing and/or in whom no evidence of COVID-19 was ever found). Only patients in whom ethnicity was recorded (86.0% of Cases patients and 77.7% of Controls) have been included.

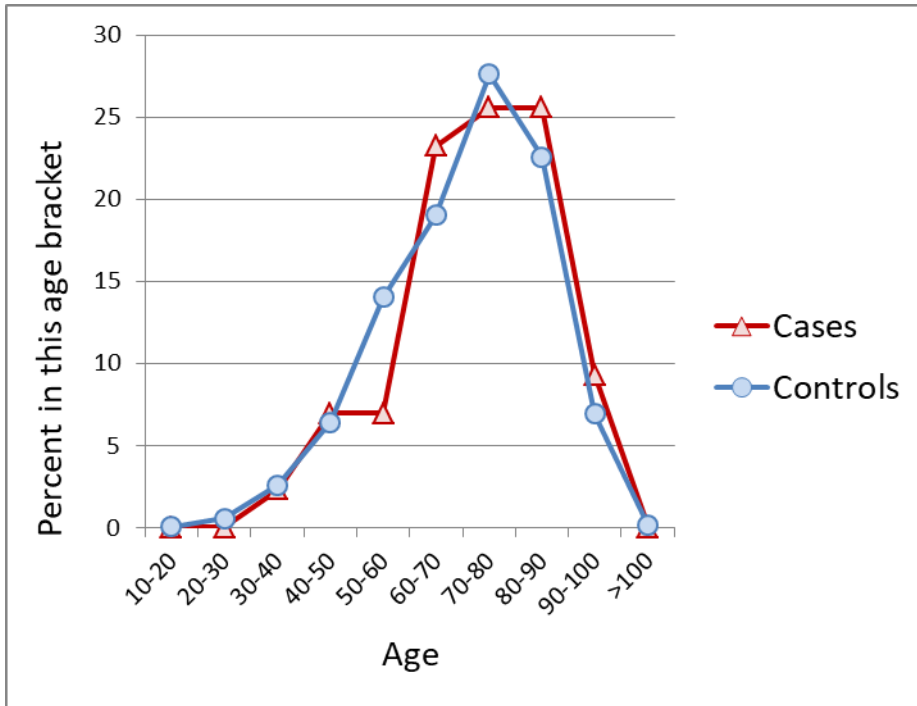


Figure S2. Age distributions in Cases (who had evidence of COVID-19 at the onset of their stroke, red triangles) and in Controls (who were SARS-CoV-2-negative on testing or never had evidence of COVID-19 infection, blue circles). The age distributions overlap very closely with no evidence of a sub-group of younger patients in Cases.

Supplementary tables

Stroke service	Total strokes	All COVID-19	Cases	Controls	Weeks collected
Birmingham	105	12	11	93	1-8
Fairfield, Greater Manchester	232	26	5	206	2-17
Glasgow Royal Infirmary	43	3	3	40	1-4, 11-12
Imperial	38	9	9	29	3-4, 7, 11-12
King's, London	161	5	5	156	3-17
Leeds	78	7	6	71	4-10, 12
Newcastle	120	10	8	110	1-8
Princess Royal, Bromley	78	1	1	77	2-5, 7-16
Salford, Greater Manchester	119	6	6	113	2-9
Southampton	64	8	4	56	1-7
St George's, London	55	6	6	49	1, 5, 8
Stoke-on-Trent	97	12	6	85	1-9
UCL Hospitals, London	317	18	16	299	1-17
Total	1507	123	86	1384	

Table S1. Cases submitted by each stroke service. Patients were included in the study if they were admitted during the 17 weeks following Monday 9th March, the date of the first Case (i.e. patient with evidence of COVID-19 at stroke onset). These weeks are labelled consecutively from 1 to 17. Collection finished at the end of Week 17, i.e. week commencing Monday 29th June and ending 5th July. Each Centre collected patients with dates of admission during the weeks shown.

	Cases	Controls	Others
All strokes	n = 86	n = 1384	n = 36*
Age: median (IQR)	74.5 (67-84)	73 (61-82)	75 (65.75-80.25)
Males (%)	47 (54.7)	731 (52.8)	18 (50)
Ischaemic (%)	81 (94.2)	1193 (86.2)	30 (83.3)
Ethnicity	n = 74	n = 1076	n = 35
White (%)	53 (71.6)	886 (82.3)	32 (91.4)
Black (%)	7 (9.5)	98 (9.1)	2 (5.7)
Asian (%)	13 (17.6)	79 (7.3)	1 (2.9)
Mixed / other (%)	1 (1.4)	13 (1.2)	0 (0.0)
Disability prior to stroke	n = 84	n = 1369	n = 36
Premorbid mRS: median (IQR)	1 (0-3)	0 (0-2)	1.5 (0-2.25)
Admission stroke severity	n = 74	n = 1336	n = 36
NIHSS: median (IQR)	8 (3.25-17)	5 (2-13)	14.5 (5.75-18)
Respiratory support during admission	n = 86	n = 1369	n = 36
None required (%)	41 (47.7)	1236 (90.3)	23 (63.9)
O ₂ by nasal prongs (%)	22 (25.6)	66 (4.8)	8 (22.2)
O ₂ by mask (%)	15 (17.4)	42 (3.1)	4 (11.1)
Non-invasive ventilation (%)	1 (1.2)	6 (0.4)	0 (0)
Intubation and ventilation (%)	7 (8.1)	19 (1.4)	1 (2.8)
Outcome measures	n = 86	n = 1384	n = 36
Length of stay in days: median (IQR)	7 (3-17)	3 (2-8)	27.5 (14.75-47.25)
mRS on discharge: median (IQR)	4 (2-5)	3 (1-4)	4 (2-4)
Death during admission (%)	17 (19.8)	133 (9.6)	3 (8.3)
Recurrence during admission (%)	2 (2.3)	14 (1.0)	0 (0.0)

Table S2. Stroke characteristics in 36 patients with Post-stroke COVID-19 (patients who appear to have developed COVID-19 after stroke onset), shown alongside the data from Cases and Controls from Table 1 for ease of comparison. *One intracerebral haemorrhage in a patient diagnosed with COVID-19 is omitted: the patient could not be classified either as a Case or as having Post-stroke COVID-19, as the date of stroke onset could not be estimated. IQR: interquartile range; NIHSS: National Institutes of Health Stroke Scale; mRS: modified Rankin scale.