



original reports

Impact of Previously Unrecognized HLA Mismatches Using Ultrahigh Resolution Typing in Unrelated Donor Hematopoietic Cell Transplantation

Neema P. Mayor, PhD^{1,2}; Tao Wang, PhD^{3,4}; Stephanie J. Lee, MD, MPH^{5,6}; Michelle Kuxhausen, MS⁵; Cynthia Vierra-Green, MS⁵; Dominic J. Barker, MSc¹; Jeffrey Auletta, MD⁷; Vijaya R. Bhatt, MBBS⁸; Shahinaz M. Gadalla, MD, PhD⁹; Loren Gragert, PhD¹⁰; Yoshihiro Inamoto, MD, PhD¹¹; Gerald P. Morris, MD, PhD¹²; Sophie Paczesny, MD, PhD¹³; Ran Reshef, MD¹⁴; Olle Ringdén, MD, PhD¹⁵; Bronwen E. Shaw, MD, PhD⁴; Peter Shaw, MD, MA, MBBS¹⁶; Stephen R. Spellman, MBS⁵; and Steven G. E. Marsh, PhD^{1,2}

abstract

PURPOSE Ultrahigh resolution (UHR) HLA matching is reported to result in better outcomes following unrelated donor hematopoietic cell transplantation, improving survival and reducing post-transplant complications. However, most studies included relatively small numbers of patients. Here we report the findings from a large, multicenter validation study.

METHODS UHR HLA typing was available on 5,140 conventionally 10 out of 10 HLA-matched patients with malignant disease transplanted between 2008 and 2017.

RESULTS After UHR HLA typing, 82% of pairs remained 10 out of 10 UHR-matched; 12.3% of patients were 12 out of 12 UHR HLA-matched. Compared with 12 out of 12 UHR-matched patients, probabilities of grade 2-4 acute graft-versus-host disease (aGVHD) were significantly increased with UHR mismatches (overall $P = .0019$) and in those patients who were HLA-DPB1 T-cell epitope permissively mismatched or nonpermissively mismatched (overall $P = .0011$). In the T-cell-depleted subset, the degree of UHR HLA mismatch was only associated with increased transplant-related mortality (TRM) (overall $P = .0068$). In the T-cell-replete subset, UHR HLA matching was associated with a lower probability of aGVHD (overall $P = .0020$); 12 out of 12 UHR matching was associated with reduced TRM risk when compared with HLA-DPB1 T-cell epitope permissively mismatched patients, whereas nonpermissive mismatching resulted in a greater risk (overall $P = .0003$).

CONCLUSION This study did not confirm that UHR 12 out of 12 HLA matching increases the probability of overall survival but does demonstrate that aGVHD risk, and in certain settings TRM, is lowest in UHR HLA-matched pairs and thus warrants consideration when multiple 10 out of 10 HLA-matched donors of equivalent age are available.

J Clin Oncol 00. © 2021 by American Society of Clinical Oncology

Creative Commons Attribution Non-Commercial No Derivatives 4.0 License

INTRODUCTION

Allogeneic hematopoietic cell transplantation (HCT) using HLA-matched unrelated donors (MUDs) is used to treat patients with malignant hematologic disease.^{1,2} Successful outcome is due in part to donor selection criteria including, but not limited to, compatible HLA types, younger donor age, and cytomegalovirus serostatus matching.³⁻⁵ HLA matching is associated with better survival and reduced post-transplant complications including graft-versus-host disease (GVHD).⁵⁻⁷ Minimum HLA matching on the basis of 8 out of 8 high-resolution HLA match (HLA-A, HLA-B, HLA-C, and HLA-DRB1) at the antigen recognition domain (ARD) level is widely accepted,⁸ whereas a 10 out of 10 HLA match (including HLA-DQB1) high-resolution is preferred.⁹ Matching or

T-cell epitope (TCE) permissive mismatching for HLA-DPB1 is recommended and in common use.^{10,11}

The HLA genes are highly polymorphic, and the widespread adoption of next-generation sequencing (NGS) methods has greatly increased the number of novel HLA alleles identified in recent years. The latest release of the IPD-IMGT/HLA Database includes 28,320 distinct HLA alleles, but potential numbers could be considerably higher.¹²⁻¹⁴ To date, few studies have attempted to determine the functional and clinical relevance of HLA polymorphism in regions outside of the ARD.¹⁵⁻¹⁸

A 2019 study suggested that any variation between the six HLA loci considered for matching correlated with detrimental outcomes post-HCT.¹⁹ In a cohort of MUD-

ASSOCIATED CONTENT

Appendix

Author affiliations and support information (if applicable) appear at the end of this article.

Accepted on March 2, 2021 and published at ascopubs.org/journal/jco on April 9, 2021; DOI <https://doi.org/10.1200/JCO.20.03643>

CONTEXT

Key Objective

Are the previously unrecognized mismatches identified by ultrahigh resolution (UHR) HLA typing associated with differences in overall survival (OS) and the risk of complications following unrelated donor hematopoietic cell transplantation?

Knowledge Generated

UHR HLA typing identifies mismatches that were not previously identified. Prior studies reported associations between UHR HLA mismatches and inferior OS. This validation analysis found no associations between UHR mismatching and OS among transplants equivalently matched (10 out of 10) on the basis of conventional high-resolution matching standards. Consideration of UHR differences among equivalently matched donor options was associated with significantly reduced risk of grade 2-4 acute graft-versus-host disease and in some cases transplant-related mortality.

Relevance

This study provides evidence for consideration of UHR matching when multiple 10 out of 10 high-resolution-matched donors are available.

HCT pairs from the United Kingdom predominantly receiving in vivo T-cell-depleting serotherapy, recipients receiving a 12 out of 12 ultrahigh resolution (UHR; including HLA-DPB1) HLA-matched graft (defined as matched at a genomic level for HLA class I genes and at an extended coding DNA sequence level for HLA class II) had significantly improved overall survival (OS) than those with any degree of mismatch. In addition, 10 out of 10 UHR-matched, permissively DPB1-mismatched transplant did not have significantly different OS compared with 12 out of 12 UHR-matched, whereas increasing UHR mismatching was associated with increased grade 2-4 acute GVHD (aGVHD). Although possibly controversial,^{20,21} these findings were partially confirmed in similar, albeit smaller, cohorts.^{22,23}

The aims of this study were to determine whether UHR HLA matching in an independent cohort of MUD-HCT recipients was associated with transplant outcomes, to validate the previous findings of better OS and less aGVHD with UHR matching in a cohort of T-cell-depleted MUD-HCT patients, and to analyze a cohort of T-cell-replete MUD-HCTs.

METHODS

Study Design

UHR HLA typing and clinical data were available on a cohort of 5,140 first allogeneic MUD-HCT donor and recipient pairs in the Center for International Blood and Marrow Transplant Research (CIBMTR). Patients received a high-resolution, 10 out of 10 HLA-matched graft at ARD level between 2008 and 2017 for acute myelogenous leukemia, acute lymphatic leukemia, or myelodysplastic syndrome (Table 1). Recipients of umbilical cord blood grafts, ex vivo T-cell-depleted grafts, or post-transplant cyclophosphamide for GVHD prophylaxis were excluded. Subgroup analyses included those receiving in vivo T-cell-

depleted (antithymocyte globulin or alemtuzumab, n = 2,039) and T-cell-replete transplants (n = 3,101). The National Marrow Donor Program Institutional Review Board approved this study. Informed written consent was obtained from all participants, in accordance with the Declaration of Helsinki.

HLA Typing

UHR HLA typing was performed by a commercial vendor using Pacific Biosciences' single-molecule real-time DNA sequencing method. Typing was completed for the six classical HLA loci (class I: HLA-A, HLA-B, and HLA-C; class II: HLA-DRB1, HLA-DQB1, and HLA-DPB1). The NGS typing methodology included all exons and the intervening introns for the classical HLA class I genes and exons 2 and 3 only for the class II genes.

Determining HLA Matching

Because of the timing of the typing, different ambiguous HLA typing results were obtained. All HLA typing data were reviewed, curated, and normalized to ensure consistency. Matching was determined according to criteria used in a previous study.¹⁹ Analyses that included the HLA-DPB1 TCE (DP-TCE) matching algorithm used the model proposed by Crivello et al.¹⁰

Sixteen pairs were removed from the analysis because of an inability to assign DP-TCE groups or where UHR matching identified uncharacterized null alleles resulting in ARD matches < 10 out of 10.

Models of UHR HLA Matching Analysis

Several models of HLA matching were tested to replicate those used previously.¹⁹ model 1, compared 12 out of 12 UHR HLA-matched individuals and those mismatched at any level, at any loci (12 out of 12 v ≤ 11 out of 12 matched); model 2, tested the degree of UHR HLA matching (12 out of 12 v 11 out of 12 v 10 out of 12 v ≤ 9

TABLE 1. Recipient and Donor Characteristics

Variable	Overall, No. (%)	T-Cell-Depleted (ATG or Alemtuzumab), No. (%)	T-Cell-Replete, No. (%)
No. of patients	5,140	2,039	3,101
Disease at transplant			
AML	2,573 (50)	1,047 (51)	1,526 (49)
ALL	805 (16)	285 (14)	520 (17)
MDS	1,762 (34)	707 (35)	1,055 (34)
Other			
Disease status at transplant			
Early	2,397 (47)	962 (47)	1,435 (46)
Intermediate	703 (14)	264 (13)	439 (14)
Advanced	1,971 (38)	781 (38)	1,190 (38)
Missing	69 (1)	32 (2)	37 (1)
Recipient age at transplant, years			
0-10	152 (3)	81 (4)	71 (2)
11-18	135 (3)	64 (3)	71 (2)
19-29	406 (8)	165 (8)	241 (8)
30-39	434 (8)	159 (8)	275 (9)
40-49	710 (14)	256 (13)	454 (15)
50-59	1,201 (23)	473 (23)	728 (23)
60+	2,102 (41)	841 (41)	1,261 (41)
Median (range)	57 (1-84)	57 (1-84)	57 (1-81)
Recipient sex			
Male	2,925 (57)	1,189 (58)	1,736 (56)
Female	2,215 (43)	850 (42)	1,365 (44)
Recipient race			
White	4,582 (89)	1,823 (89)	2,759 (89)
Other	459 (9)	181 (9)	278 (9)
Missing	99 (2)	35 (2)	64 (2)
Donor age group, years			
19-29	3,189 (62)	1,290 (63)	1,899 (61)
30-39	1,164 (23)	455 (22)	709 (23)
40-49	604 (12)	237 (12)	367 (12)
50-59	179 (3)	57 (3)	122 (4)
60+	4 (< 1)	0 (0)	4 (< 1)
Median (range)	27 (18-61)	27 (18-60)	28 (18-61)
Donor pregnancy			
No	898 (17)	325 (16)	573 (18)
Yes	503 (10)	188 (9)	315 (10)
Male	3,727 (73)	1,521 (75)	2,206 (71)
Missing	12 (< 1)	5 (< 1)	7 (< 1)
Karnofsky Performance Score			
10-80	2,031 (40)	773 (38)	1,258 (41)
90-100	3,041 (59)	1,235 (61)	1,806 (58)
Missing	68 (1)	31 (2)	37 (1)

(continued on following page)

TABLE 1. Recipient and Donor Characteristics (continued)

Variable	Overall, No. (%)	T-Cell–Depleted (ATG or Alemtuzumab), No. (%)	T-Cell–Replete, No. (%)
GVHD prophylaxis			
Tacrolimus + MMF + others	742 (14)	365 (18)	377 (12)
Tacrolimus + MTX + others (except MMF)	3,097 (60)	1,228 (60)	1,869 (60)
Tacrolimus + others (except MTX and MMF)	400 (8)	33 (2)	367 (12)
Tacrolimus alone	131 (3)	119 (6)	12 (< 1)
CSA + MMF + other(s) (except post-CY)	338 (7)	140 (7)	198 (6)
CSA + MTX + other(s) (except MMF and post-CY)	319 (6)	101 (5)	218 (7)
CSA + other(s) (except MTX, MMF, and post-CY)	19 (< 1)	12 (1)	7 (< 1)
CSA alone	21 (< 1)	8 (< 1)	13 (< 1)
Other GVHD prophylaxis	73 (1)	33 (2)	40 (1)
Graft type			
Marrow	895 (17)	374 (18)	521 (17)
PBSC	4,245 (83)	1,665 (82)	2,580 (83)
HCT-CI			
0	1,188 (23)	508 (25)	680 (22)
1	670 (13)	286 (14)	384 (12)
2	792 (15)	318 (16)	474 (15)
3+	2,484 (48)	925 (45)	1,559 (50)
NA/f2400 missing	1 (< 1)	0 (0)	1 (< 1)
Missing	5 (< 1)	2 (< 1)	3 (< 1)
Prior autologous transplant			
No	5,054 (98)	2,006 (98)	3,048 (98)
Yes	86 (2)	33 (2)	53 (2)
Conditioning regimen			
Myeloablative	2,725 (53)	1,032 (51)	1,693 (55)
RIC/NMA	2,399 (47)	1,004 (49)	1,395 (45)
Missing	16 (< 1)	3 (< 1)	13 (< 1)
Donor-recipient sex match			
Male-male	2,282 (44)	932 (46)	1,350 (44)
Male-female	1,445 (28)	589 (29)	856 (28)
Female-male	642 (12)	256 (13)	386 (12)
Female-female	769 (15)	261 (13)	508 (16)
Unknown	2 (< 1)	1 (NA)	1 (NA)
Donor-recipient race match			
Matched	3,444 (67)	1,366 (67)	2,078 (67)
Mismatched	341 (7)	145 (7)	196 (6)
Missing	1,355 (26)	528 (26)	827 (27)
Donor-recipient CMV match			
Positive-positive	1,356 (26)	573 (28)	783 (25)
Positive-negative	473 (9)	180 (9)	293 (9)
Negative-positive	1,853 (36)	762 (37)	1,091 (35)
Negative-negative	1,427 (28)	514 (25)	913 (29)
Missing	31 (< 1)	10 (< 1)	21 (1)

(continued on following page)

TABLE 1. Recipient and Donor Characteristics (continued)

Variable	Overall, No. (%)	T-Cell–Depleted (ATG or Alemtuzumab), No. (%)	T-Cell–Replete, No. (%)
Year of transplant			
2008	71 (1)	19 (1)	52 (2)
2009	199 (4)	68 (3)	131 (4)
2010	433 (8)	168 (8)	265 (9)
2011	481 (9)	205 (10)	276 (9)
2012	570 (11)	228 (11)	342 (11)
2013	553 (11)	211 (10)	342 (11)
2014	695 (14)	297 (15)	398 (13)
2015	1,171 (23)	456 (22)	715 (23)
2016	784 (15)	325 (16)	459 (15)
2017	183 (4)	62 (3)	121 (4)
Follow-up among survivors, months			
No. evaluable	2,243	964	1,479
Median (range)	48 (91-123)	48 (3-121)	48 (1-123)

Abbreviations: ALL, acute lymphatic leukemia; AML, acute myelogenous leukemia; ATG, anti-thymocyte globulin; CMV, cytomegalovirus; CSA, cyclosporin A; CY, cyclophosphamide; Eval, evaluable; GVHD, graft-versus-host disease; HCT-CI, Hematopoietic Cell Transplantation Comorbidity Index; MDS, myelodysplastic syndrome; MMF, mycophenolate mofetil; MTX, methotrexate; NA, not applicable; NMA, non-myeloablative conditioning; PBSC, peripheral blood stem cell; RIC, reduced intensity conditioning.

out of 12); and model 3, 10 out of 10 UHR HLA-matched pairs were subdivided into 12 out of 12 UHR HLA-matched and TCE permissively mismatched or non-permissively mismatched.

Statistical Methods

The primary study outcome was OS, defined as the time from HCT to death from any cause. Surviving patients were censored at the time of last follow-up. Secondary outcomes included aGVHD, chronic GVHD, relapse, transplant-related mortality (TRM), disease-free survival (DFS), and neutrophil engraftment. aGVHD and chronic GVHD, relapse, and neutrophil engraftment were per CIBMTR definitions. TRM was death without recurrent malignancy. DFS was defined as the time to treatment failure because of death or relapse. HCT Comorbidity Index (HCT-CI) values were calculated using the model proposed by Sorror et al.²⁴

Death was considered a competing risk event for all outcomes except OS, DFS, and TRM, whereas relapse was considered a competing risk for TRM. Patients were censored at time of second HCT or if alive at last follow-up.

Multivariate analyses for OS, aGVHD, relapse, DFS, TRM, and neutrophil engraftment were performed using Cox proportional hazards models. All variables were tested for the affirmation of the proportional hazards assumption. Factors violating the proportional hazards assumption were adjusted through stratification. A stepwise variable selection procedure was then used to select adjusted covariates and develop multivariable models for the primary and secondary outcomes. Seven UHR matching variables were tested separately for association with

each outcome. For the association test of UHR matching in the T-cell–depleted cohort, a *P* value of $< .05$ was considered significant as this was a validation analysis of Mayor et al.¹⁹ For the main hypothesis of 12 out of 12 versus ≤ 11 out of 12 in the full cohort, $P < .01$ was considered significant. To adjust for multiple testing, a significance level of $P < .01/6 = .0017$ was used for all other UHR matching variables. All *P* values were raw and two-sided. Statistical analyses were done using SAS version 9.4 (Cary, NC).

RESULTS

Patient Characteristics

Median time of follow-up was 48 months (range 1 to 123; Table 1). Fifty percent of the patients had acute myelogenous leukemia, and 47% were transplanted with early disease stage. Fifty-three percent received myeloablative conditioning. Patients were predominantly Caucasian (89%), had a median age of 57 years, and mainly had young (19 to 29 years, 62%), male (73%) donors. The majority of patients received peripheral blood stem-cell grafts (83%). Nearly half of the patients had an HCT-CI of three or more (48%). The characteristics of the T-cell–depleted and T-cell–replete subgroups were well-balanced.

Impact of UHR Typing on HLA Matching Status

After UHR matching status was determined, only 82% of recipients remained a 10 out of 10 match, with the remainder being 9 out of 10 (17%) or less (1%; Table 2; Appendix Table A1, online only). When matching was extended to include HLA-DPB1, 634 (12%) patients received a 12 out of 12

UHR-matched graft, whereas 2,517 (49%), 1,643 (32%), and 346 (7%) received an 11 out of 12, 10 out of 12, or ≤ 9 out of 12 UHR-matched grafts, respectively. There were no significant differences in UHR matching status between the T-cell-depleted or T-cell-replete subgroups.

In recipients identified as 10 out of 10 UHR-matched ($n = 4,202$), 634 (15%) were found to be 12 out of 12 HLA-matched, whereas 2,011 were DP-TCE permissively mismatched (48%) and 1,557 were DP-TCE nonpermissively mismatched (37%). As previously, no significant differences between the T-cell-depleted or T-cell-replete subgroups were observed.

Analysis of the Full Cohort

The 4-year OS for the complete cohort was 48% (95% CI, 47 to 49). Adjusting for significant clinical covariates, there were no significant associations between UHR matching and OS in the full cohort or when 12 out of 12 UHR-matched patients were compared with those with any other mismatch (model 1), nor when the degree of mismatch (model 2) was tested. There was no survival advantage for patients who were either 12 out of 12 UHR or HLA-DPB1 nonpermissively mismatched (model 3) when compared with permissively mismatched patients.

The 4-year TRM for the complete cohort was 27% (95% CI, 26 to 28). Adjusting for patient and donor age, disease, and HCT-CI score, UHR HLA matching was not associated with risk of TRM in any of the models tested.

The probability of aGVHD at 100 days for the complete cohort was 43% (95% CI, 41 to 44). Adjusting for significant covariates, UHR HLA matching was associated with the probability of aGVHD (grades 2-4) in the overall cohort. Patients receiving a graft from a ≤ 11 out of 12 UHR-matched donor had a significantly higher risk of aGVHD as compared with those receiving a 12 out of 12 UHR match (model 1: hazard ratio (HR), 1.2; 95% CI, 1.05 to 1.36; $P = .0061$; Fig 1). This was further refined with UHR matching model 2, where increasing numbers of UHR mismatches were associated with increasing risk of aGVHD when compared with 12 out of 12 UHR-matched patients (11 out of 12 HR: 1.15; 95% CI, 1.01 to 1.32; 10 out of 12 HR: 1.26; 95% CI, 1.11 to 1.44; and ≤ 9 out of 12 HR: 1.24; 95% CI, 1.01 to 1.51; overall $P = .0019$; Fig 1). Additionally, 10 out of 10 UHR DPB1-TCE permissively mismatched pairs (HR: 1.16; 95% CI, 1.01 to 1.34; $P = .036$) and DPB1-TCE nonpermissively mismatched patients (HR: 1.26; 95% CI, 1.10 to 1.45; $P = .0006$; Fig 1) were associated with a higher risk of aGVHD compared with 12 out of 12 UHR-matched pairs (overall $P = .0011$).

Analysis of the T-Cell-Depleted Subset

No significant associations with OS were observed with any of the models tested in the T-cell-depleted subgroup ($N = 2,039$; data not shown). However, UHR mismatches were associated with TRM (Fig 2, Table 3; $P = .0068$ overall), with patients receiving a 10 out of 12 (HR: 1.46; 95% CI, 1.13 to 1.90; $P = .0044$) or ≤ 9 out of 12 UHR-

TABLE 2. HLA Matching Status After UHR HLA Typing

UHR HLA Matching Status	T-Cell-Depleted (ATG or Alemtuzumab), No. (%)	T-Cell-Replete, No. (%)
UHR matches of 10		
10 out of 10	1,663 (82)	2,539 (82)
9 out of 10	340 (17)	510 (16)
8 out of 10	31 (2)	46 (1)
7 out of 10	5 (< 1)	6 (< 1)
UHR matches of 12		
12 out of 12	245 (12)	389 (13)
11 out of 12	1,015 (50)	1,502 (48)
10 out of 12	630 (31)	1,013 (33)
9 out of 12	130 (6)	175 (6)
8 out of 12	16 (1)	20 (1)
7 out of 12	3 (< 1)	2 (< 1)
TCE match in UHR 10 out of 10		
Matched	245 (15)	389 (15)
Nonpermissive mismatch	604 (36)	953 (38)
Permissive mismatch	814 (49)	1,197 (47)

NOTE. All pairs were identified as 10 out of 10 HLA-matched at an antigen recognition domain level prior to reanalysis. Abbreviations: ATG, anti-thymocyte globulin; TCE, T-cell epitope; UHR, ultrahigh resolution.

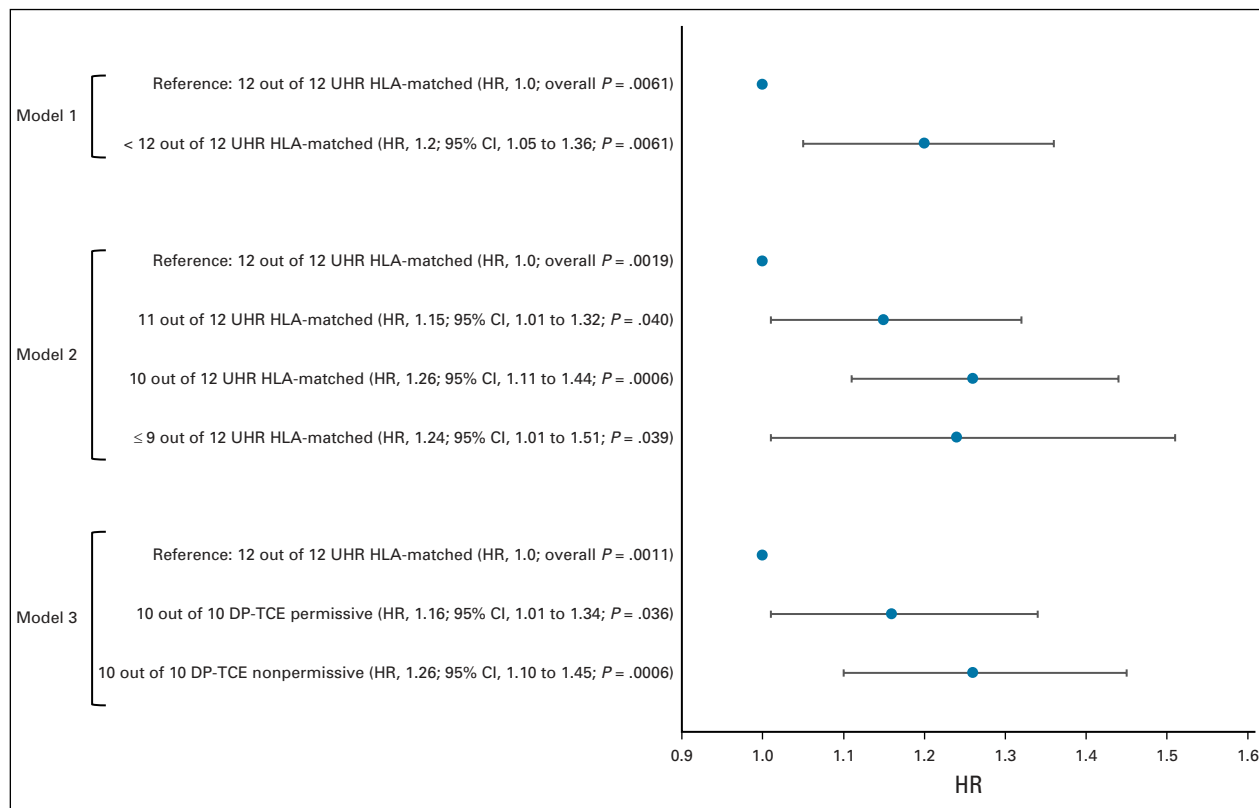


FIG 1. A forest plot showing the adjusted hazard ratio of aGVHD in the overall cohort (N = 5,140) for the three analysis models. The analysis was stratified by year of transplant and adjusted for disease, GVHD prophylaxis, HCT-CI, use of T-cell depletion, conditioning regimen, graft type, and disease status. aGVHD, acute graft-versus-host disease; HCT-CI, Hematopoietic Cell Transplantation Comorbidity Index; HR, hazard ratio; TCE, T-cell epitope; UHR, ultrahigh resolution.

matched donor (HR: 1.74; 95% CI, 1.14 to 2.66; $P = .0098$) at a significantly higher risk. No other UHR matching model had significant correlations with the probability of TRM, nor was UHR HLA matching in any model associated with any outcomes in this T-cell-depleted subset.

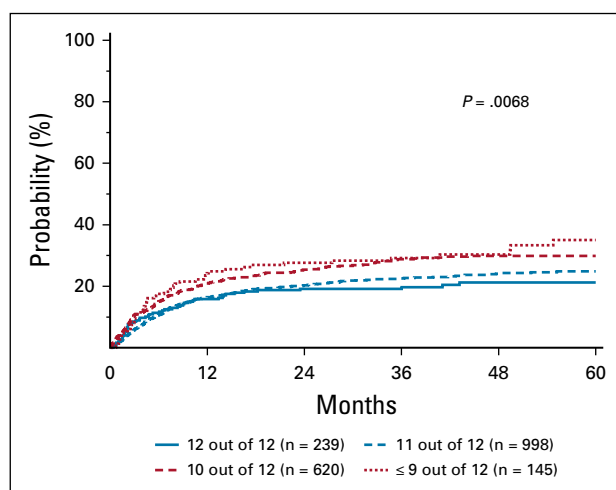


FIG 2. Adjusted cumulative incidence of TRM in a T-cell-depleted cohort. Probability of TRM increases with increasing numbers of ultrahigh resolution HLA mismatches. TRM, transplant-related mortality.

Analysis of the T-Cell-Replete Subset

No significant associations between any of the UHR HLA matching models and OS were identified in the T-cell-replete subset (data not shown). Compared with 12 out of 12 UHR HLA-matched pairs in model 3, 10 out of 10 DP-TCE nonpermissively mismatched pairs had increased risk for TRM (HR: 1.05; 95% CI, 0.83 to 1.32; $P = .70$; Table 3), whereas 10 out of 10 DP-TCE permissively mismatched patients had lower risk (HR: 0.81; 95% CI, 0.65 to 1.01; $P = .066$; overall $P = .0003$).

The risk of aGVHD (grades 2-4) in the T-cell-replete subset was associated with increasing numbers of UHR mismatches. Compared with a 12 out of 12 UHR HLA match, the probability of aGVHD was higher (overall $P = .0020$; Table 3) with the use of 10 out of 12 (HR: 1.28; 95% CI, 1.09 to 1.51; $P = .0024$) and ≤ 9 out of 12 matched donors (HR: 1.31; 95% CI, 1.04 to 1.66; $P = .024$).

Additional Outcome Analyses

UHR HLA matching was not associated with the risk of grade 3-4 aGVHD, DFS, relapse, and chronic GVHD, nor with neutrophil recovery for any of the models tested in any cohort.

TABLE 3. Multivariate Analysis for Key Outcome Variables for the T-Cell–Depleted and T-Cell–Replete Cohorts

Cohort	Variable	TRM			Grade 2-4 aGVHD		
		No. of Cases	HR (95% CI)	P	No. of Cases	HR (95% CI)	P
T-cell–depleted	UHR matching model 1						
	12 out of 12	239	1.00		230	1.00	
	< 12 out of 12	1,763	1.33 (1.05 to 1.68)	.017	1,706	1.18 (0.97 to 1.43)	.10
	UHR matching model 2			.0068			.30
	12 out of 12	239	1.00		230	1.0	
	11 out of 12	998	1.18 (0.92 to 1.51)	.19	970	1.15 (0.95 to 1.40)	.15
	10 out of 12	620	1.46 (1.13 to 1.90)	.0044	594	1.23 (0.99 to 1.53)	.061
	≤ 9 out of 12	145	1.74 (1.14 to 2.66)	.0098	142	1.11 (0.78 to 1.59)	.56
	UHR matching model 3			.072			.062
	12 out of 12	239	1.0		230	1.00	
	10 out of 10 DP-TCE permissive	801	1.33 (1.04 to 1.71)	.022	777	1.17 (0.95 to 1.45)	.14
10 out of 10 DP-TCE nonpermissive	596	1.23 (0.97 to 1.56)	.092	574	1.26 (1.04 to 1.53)	.021	
T-cell–replete	UHR matching model 1						
	12 out of 12	381	1.00		360	1.00	
	< 12 out of 12	2,660	0.90 (0.72 to 1.12)	.34	2,522	1.21 (1.03 to 1.42)	.022
	UHR matching model 2			.18			.002
	12 out of 12	381	1.00		360	1.0	
	11 out of 12	1,477	0.87 (0.69 to 1.09)	.22	1,393	1.15 (0.97 to 1.36)	.12
	10 out of 12	990	0.99 (0.77 to 1.26)	.91	943	1.28 (1.09 to 1.51)	.0024
	≤ 9 out of 12	193	0.69 (0.47 to 1.02)	.066	186	1.31 (1.04 to 1.66)	.024
	UHR matching model 3			.0003			.012
	12 out of 12	381	1.0		360	1.00	
	10 out of 10 DP-TCE permissive	1,176	0.81 (0.65 to 1.01)	.066	1,126	1.16 (0.97 to 1.39)	.11
10 out of 10 DP-TCE nonpermissive	935	1.05 (0.83 to 1.32)	.70	873	1.27 (1.07 to 1.51)	.0071	

NOTE. Bold values denote significant P values.

Abbreviations: aGVHD, acute graft-versus-host disease; HR, hazard ratio; TCE, T-cell epitope; TRM, transplant-related mortality; UHR, ultrahigh resolution.

Additional HLA Analyses

In the study by Mayor et al,¹⁹ a matching model that combined UHR HLA matching, the DP-TCE permissive matching algorithm, and cytomegalovirus serostatus matching was proposed. No significant associations were observed in any cohort using the proposed model. Additionally, analyses of noncoding variation found no significant associations with outcomes (Appendix Tables A2 and A3, online only).

DISCUSSION

The last 5 years has seen dramatic changes in the methodology routinely used to type HLA genes, particularly within the field of HCT, with increasing numbers of clinical laboratories, MUD registries, and commercial typing providers moving to NGS platforms. There are numerous reasons for this change including in some instances, cost, time, and throughput benefits. A key advantage of NGS protocols is rapid characterization of HLA genes in a

timeframe amenable for clinical needs, reducing and often eliminating ambiguous typing results. With this readily available added information about HLA comes the opportunity to identify whether these additional data affect patient outcomes and determine the standard of matching using NGS.

The aim of this retrospective study was to investigate the impact of UHR HLA matching in a large independent data set of unrelated donor (UD) HCT patients from the CIBMTR. Both the full cohort as well as T-cell–depleted and T-cell–replete subgroups were tested. Unfortunately, this study did not confirm the primary hypothesis that UHR HLA matching was associated with improved OS in any of the cohorts tested. However, in the full cohort, UHR mismatching was associated with increased aGVHD risk in all matching models tested. In the T-cell–depleted subgroup, we partly validated the findings of the UK study, with a significant association between UHR HLA mismatching and the probability of TRM. In the T-cell–replete

TABLE 4. Comparison of Cohort Characteristics Between This Study and That by Mayor et al¹⁹

Variable	T-Cell-Depleted, No. (%)	T-Cell-Replete, No. (%)	UK Study, No. (%)
No. of patients	2,039	3,101	891
Disease at transplant			
AML	1,047 (51)	1,526 (49)	224 (25)
ALL	285 (14)	520 (17)	164 (19)
MDS	707 (35)	1,055 (34)	153 (17)
Other			350 (39)
Disease status at transplant			
Early or good	962 (47)	1,435 (46)	406 (46)
Intermediate	264 (13)	439 (14)	325 (36)
Advanced or poor	781 (38)	1,190 (38)	135 (15)
Missing	32 (2)	37 (1)	25 (3)
Recipient age at transplant, years			
0-10	81 (4)	71 (2)	83 (9)
11-18	64 (3)	71 (2)	80 (9)
19-29	165 (8)	241 (8)	130 (15)
30-39	159 (8)	275 (9)	135 (15)
40-49	256 (13)	454 (15)	181 (20)
50-59	473 (23)	728 (23)	187 (21)
60+	841 (41)	1,261 (41)	95 (11)
Median (range)	57 (1-84)	57 (1-81)	41.4 (1.1-71.9)
Recipient sex			
Male	1,189 (58)	1,736 (56)	551 (62)
Female	850 (42)	1,365 (44)	340 (38)
Donor age group, years			
19-29	1,290 (63)	1,899 (61)	271 (30)
30-39	455 (22)	709 (23)	366 (41)
40-49	237 (12)	367 (12)	217 (24)
50-59	57 (3)	122 (4)	29 (4)
60+	0 (0)	4 (< 1)	0 (0)
Missing			8 (< 1)
Donor pregnancy			
No	325 (16)	573 (18)	71 (8)
Yes	188 (9)	315 (10)	87 (10)
Male	1,521 (75)	2,206 (71)	723 (81)
Missing	5 (< 1)	7 (< 1)	10 (1)
Graft type			
Marrow	374 (18)	521 (17)	402 (45)
PBSC	1,665 (82)	2,580 (83)	482 (54)
Missing			7 (< 1)
Prior autologous transplant			
No	2,006 (98)	3,048 (98)	760 (85)
Yes	33 (2)	53 (2)	131 (15)

(continued on following page)

TABLE 4. Comparison of Cohort Characteristics Between This Study and That by Mayor et al¹⁹ (continued)

Variable	T-Cell-Depleted, No. (%)	T-Cell-Replete, No. (%)	UK Study, No. (%)
Conditioning regimen			
Myeloablative	1,032 (51)	1,693 (55)	457 (51)
RIC/NMA	1,004 (49)	1,395 (45)	415 (47)
Missing	3 (< 1)	13 (< 1)	19 (2)
Donor-recipient sex match			
Male-male	932 (46)	1,350 (44)	472 (53)
Male-female	589 (29)	856 (28)	252 (28)
Female-male	256 (13)	386 (12)	79 (9)
Female-female	261 (13)	508 (16)	88 (10)
Unknown	1 (NA)	1 (NA)	0 (0)
Donor-recipient CMV match			
Positive-positive	573 (28)	783 (25)	149 (17)
Positive-negative	180 (9)	293 (9)	59 (7)
Negative-positive	762 (37)	1,091 (35)	179 (20)
Negative-negative	514 (25)	913 (29)	472 (53)
Missing	10 (< 1)	21 (1)	32 (3)
Year of transplant			
1996	0 (0)	0 (0)	1 (< 1)
1997	0 (0)	0 (0)	18 (2)
1998	0 (0)	0 (0)	37 (4)
1999	0 (0)	0 (0)	41 (5)
2000	0 (0)	0 (0)	62 (7)
2001	0 (0)	0 (0)	76 (8)
2002	0 (0)	0 (0)	83 (9)
2003	0 (0)	0 (0)	88 (10)
2004	0 (0)	0 (0)	45 (5)
2005	0 (0)	0 (0)	57 (6)
2006	0 (0)	0 (0)	73 (8)
2007	0 (0)	0 (0)	88 (10)
2008	19 (1)	52 (2)	71 (8)
2009	68 (3)	131 (4)	63 (7)
2010	168 (8)	265 (9)	66 (7)
2011	205 (10)	276 (9)	22 (3)
2012	228 (11)	342 (11)	0 (0)
2013	211 (10)	342 (11)	0 (0)
2014	297 (15)	398 (13)	0 (0)
2015	456 (22)	715 (23)	0 (0)
2016	325 (16)	459 (15)	0 (0)
2017	62 (3)	121 (4)	0 (0)

Abbreviations: ALL, acute lymphatic leukemia; AML, acute myelogenous leukemia; CMV, cytomegalovirus; MDS, myelodysplastic syndrome; NMA, non-myeloablative conditioning; PBSC, peripheral blood stem cell; RIC, reduced intensity conditioning.

subgroup, increasing numbers of UHR mismatches were associated with increased risk of aGVHD. The probability of TRM was also higher in patients receiving 10 out of 10 UHR-matched, DP-TCE nonpermissively mismatched donors compared with DP-TCE permissively matched donors, but not 12 out of 12 UHR-matched pairs.

This study confirmed that UHR HLA matching is associated with a decreased risk of aGVHD in the T-cell-replete subgroup. aGVHD remains a common, life-threatening condition that can affect patient quality of life after HCT.²⁵ Thus, any means of reducing this risk, especially when achievable within the normal processes surrounding patient and donor testing prior to HCT, should be considered. Abrogation of the graft-versus-leukemia effect could be a concern, but we did not see any association between UHR HLA matching status and relapse or DFS.

A common assumption around NGS typing strategies that deliver UHR HLA typing is that the cost is prohibitive. In fact, today the cost and turnaround time of such typing is comparable with previously used methods, and continued demand for such tests will only continue to decrease costs. Although cost analyses were not within the scope of this study, it should be acknowledged that treatment of patients with aGVHD is also costly²⁶ and not risk-free.

Identifying a 12 out of 12 UHR HLA-matched, or a 10 out of 10 UHR-matched, DP-TCE permissively mismatched donor for patients can be challenging and may not be a possible option. However, studies have shown that in similar populations from the United States, the probability of identifying a 10 out of 10, DP-TCE permissively mismatched donor was 69%, increasing to 80% if additional donors underwent typing, depending on the patient's ethnic origin.²⁷ The resolution of HLA typing used was lower than UHR, which will likely affect the probability of finding such a donor when UHR typing is used, but nonetheless, it suggests that identifying 12 out of 12 or 10 out of 10 DP-TCE permissively matched donors is a realistic possibility. The uptake of UHR typing methods by large UD registries will help facilitate UHR matching in clinical practice.²⁸⁻³⁰ The potential benefit of using UHR HLA typing for alternative donor sources is yet to be tested.

There were important differences between this study and that by Mayor et al,¹⁹ which may have contributed to the differing results. Although both studies used Pacific Biosciences' single-molecule real-time sequencing technologies, the extent of the gene coverage differed, with the previous study including all the defined 5' and 3' untranslated regions of the class I genes plus additional exons of HLA-DQB1 and HLA-DPB1 (exons 2-5 and 2-4, respectively). We determined that 45 out of 891 patients (5%) of the UK study cohort would have been classified as a different match level than the present analysis on the basis of the additional information obtained from the more extensive typing strategy. If extrapolated to this study cohort, a potential 250 of the 5,140 patients studied may have been classified as less well-matched if the more extensive typing methodology was used. Although it is unlikely that differences in the untranslated regions have functional

consequences, they could be suggestive of lesser compatibility over the extended MHC region, resulting in more genetic disparity between patients and donors, and the potential for increased complications post-transplant.¹⁷ Further studies at a comparable level of typing will be needed to determine whether this additional information is clinically important.

In addition to the typing differences, the characteristics of the current cohort were notably different (Table 4). Of note, the present study was limited to 10 out of 10 ARD HLA-matched pairs, whereas the previous study included ARD mismatches. Additionally, the years of transplant differed, overlapping by only 4 years (2008-2011). Transplant practice changes over time, which is reflected in additional differences between the two studies (change in disease, use of peripheral blood, older patients, and younger UDs recently). Finally, this study included more advanced disease stage (38% v 15% previously). Although we attempted to mitigate the effects of these differences in the statistical analysis, this variation may have contributed to a different risk profile than that of the UK study. Indeed, HLA mismatching UD-HCT patients at high resolution⁶ and transplanting patients in older eras^{31,32} are associated with detrimental outcomes, whereas the adverse effect of HLA mismatching diminishes in patients with advanced disease.^{7,33} Patients transplanted in more recent years may benefit from changes in practice to the extent that other risk factors such as HLA matching become less marked.

Further evidence to support this observation is the surprising lack of association between the DP-TCE matching model and outcomes, which is in contrast to several previous publications. An earlier study from the CIBMTR in a similar cohort of patients reported that either permissive or nonpermissive DPB1 mismatching was associated with increased probability of aGVHD, while nonpermissive DP-TCE mismatching was associated with reduced OS.⁷ Of note, the cohort studied by Pidala et al resembled the UK UHR cohort: transplants between 1999 and 2011, more bone marrow grafts, more myeloablative conditioning, similar proportions of advanced disease stage, and inclusion of patients with chronic myeloid leukemia. Further studies in more recent cohorts are needed to confirm whether factors previously thought to affect outcome remain as relevant in the current era.

In conclusion, this study did not confirm previous findings that UHR HLA typing was associated with OS in any of the models tested. However, when multiple 10 out of 10 HLA-matched donors of equivalent age are available, the consideration of UHR HLA typing data may identify donors associated with a reduced risk of aGVHD, and in some cases TRM, even if OS does not differ.

AFFILIATIONS

- ¹Anthony Nolan Research Institute, Royal Free Hospital, London, UK
²UCL Cancer Institute, University College London, London, UK
³Division of Biostatistics, Medical College of Wisconsin, Milwaukee, WI
⁴Center for International Blood and Marrow Transplant Research, Medical College of Wisconsin, Milwaukee, WI
⁵Center for International Blood and Marrow Transplant Research, National Marrow Donor Program/Be The Match, Minneapolis, MN
⁶Clinical Research Division, Fred Hutchinson Cancer Research Center, Seattle, WA
⁷Blood and Marrow Transplant Program and Host Defense Program, Nationwide Children's Hospital, Columbus, OH
⁸Division of Hematology-Oncology, University of Nebraska Medical Center, Omaha, NE
⁹Division of Cancer Epidemiology and Genetics, NIH-NCI Clinical Genetics Branch, Rockville, MD
¹⁰Tulane Cancer Center, Department of Pathology and Laboratory Medicine, Tulane University School of Medicine, New Orleans, LA
¹¹Department of Hematopoietic Stem Cell Transplantation, National Cancer Center Hospital, Tokyo, Japan
¹²Department of Pathology, University of California San Diego, San Diego, CA
¹³Department of Microbiology and Immunology, Medical University of South Carolina, Charleston, SC
¹⁴Division of Hematology/Oncology and Columbia Center for Translational Immunology, Columbia University Irving Medical Center, New York, NY
¹⁵Department of Clinical Sciences, Intervention and Technology, Translational Cell Therapy Research Group, Karolinska Institute, Stockholm, Sweden
¹⁶Department of Child and Adolescent Health, Cancer Centre for Children, The Children's Hospital at Westmead, Westmead, New South Wales, Australia

CORRESPONDING AUTHOR

Steven G. E. Marsh, PhD, Anthony Nolan Research Institute, Royal Free Hospital, Hampstead, London NW3 2QG, UK; e-mail: Steven.Marsh@ucl.ac.uk.

DISCLAIMER

The views expressed in this article do not reflect the official policy or position of the National Institute of Health, the Department of the Navy, the Department of Defense, the Health Resources and Services Administration (HRSA), or any other agency of the US Government.

SUPPORT

N.P.M., D.J.M., and S.G.E.M. are funded by the charity Anthony Nolan. The CIBMTR is supported primarily by Public Health Service U24CA076518 from the National Cancer Institute (NCI), the National

Heart, Lung and Blood Institute (NHLBI), and the National Institute of Allergy and Infectious Diseases (NIAID); U24HL138660 from NHLBI and NCI; OT3HL147741 and U01HL128568 from the NHLBI; HHS250201700006C and HHS250201700007C from the Health Resources and Services Administration (HRSA); and N00014-20-1-2705 and N00014-20-1-2832 from the Office of Naval Research; additional federal support is provided by P01CA111412, R01CA152108, R01CA215134, R01CA218285, R01CA231141, R01AI128775, R01HL126589, R01HL129472, R01HL130388, R01HL131731, U01AI069197, U01AI126612, UG1HL06924, and BARDA. Support is also provided by Be the Match Foundation, Boston Children's Hospital, Dana Farber, St Baldrick's Foundation, Stanford University, the Medical College of Wisconsin the National Marrow Donor Program, and the following commercial entities: Actinium Pharmaceuticals Inc; Adienne SA; Allovir Inc; Amgen Inc; Angiocrine Bioscience; Astellas Pharma US; bluebird bio Inc; Bristol Myers Squibb Co; Celgene Corp; CSL Behring; CytoSen Therapeutics Inc; Daiichi Sankyo Co, Ltd; ExcellThera; Fate Therapeutics; Gamida-Cell, Ltd; Genentech Inc; Incyte Corporation; Janssen/Johnson & Johnson; Jazz Pharmaceuticals Inc; Kiadis Pharma; Kite, a Gilead Company; Kyowa Kirin; Legend Biotech; Magenta Therapeutics; Merck Sharp & Dohme Corp; Millennium, the Takeda Oncology Co; Miltenyi Biotec Inc; Novartis Pharmaceuticals Corporation; Omeros Corporation; Oncoimmune Inc; Orca Biosystems Inc; Pfizer Inc; Pharmacyclics, LLC; Sanofi Genzyme; Stemcyte; Takeda Pharma; Vor Biopharma; and Xenikos BV.

AUTHORS' DISCLOSURES OF POTENTIAL CONFLICTS OF INTEREST

Disclosures provided by the authors are available with this article at DOI <https://doi.org/10.1200/JCO.20.03643>.

AUTHOR CONTRIBUTIONS

- Conception and design:** Neema P. Mayor, Tao Wang, Stephanie J. Lee, Stephen R. Spellman, Steven G. E. Marsh
Provision of study materials or patients: Bronwen E. Shaw, Stephen R. Spellman
Collection and assembly of data: Neema P. Mayor, Tao Wang, Stephanie J. Lee, Michelle Kuxhausen, Cynthia Vierra-Green, Dominic J. Barker, Stephen R. Spellman, Steven G. E. Marsh
Data analysis and interpretation: All authors
Manuscript writing: All authors
Final approval of manuscript: All authors
Accountable for all aspects of the work: All authors

ACKNOWLEDGMENT

The authors would like to thank the patients and donors who consented to be part of this study.

REFERENCES

- D'Souza A, Fretham C, Lee SJ, et al: Current use of and trends in hematopoietic cell transplantation in the United States. *Biol Blood Marrow Transplant* 26:e177-e182, 2020
- Passweg JR, Baldomero H, Bader P, et al: Is the use of unrelated donor transplantation leveling off in Europe? The 2016 European Society for Blood and Marrow Transplant activity survey report. *Bone Marrow Transplant* 53:1139-1148, 2018
- Kollman C, Spellman SR, Zhang M-J, et al: The effect of donor characteristics on survival after unrelated donor transplantation for hematologic malignancy. *Blood* 127:260-267, 2016
- Shaw BE, Logan BR, Spellman SR, et al: Development of an unrelated donor selection score predictive of survival after HCT: Donor age matters most. *Biol Blood Marrow Transplant* 24:1049-1056, 2018
- Shaw BE, Mayor NP, Szydlo RM, et al: Recipient/donor HLA and CMV matching in recipients of T-cell-depleted unrelated donor haematopoietic cell transplants. *Bone Marrow Transplant* 52:717-725, 2017
- Lee S, Klein J, Haagenson M, et al: High-resolution donor-recipient HLA matching contributes to the success of unrelated donor marrow transplantation. *Blood* 110:4576-4583, 2007
- Pidala J, Lee SJ, Ahn KW, et al: Nonpermissive HLA-DPB1 mismatch increases mortality after myeloablative unrelated allogeneic hematopoietic cell transplantation. *Blood* 124:2596-2606, 2014

8. Dehn J, Spellman S, Hurley CK, et al: Selection of unrelated donors and cord blood units for hematopoietic cell transplantation: Guidelines from the NMDP/CIBMTR. *Blood* 134:924-934, 2019
9. Little AM, Green A, Harvey J, et al: BSHI guideline: HLA matching and donor selection for haematopoietic progenitor cell transplantation. *Int J Immunogenet* 43:263-286, 2016
10. Crivello P, Zito L, Sizzano F, et al: The impact of amino acid variability on alloreactivity defines a functional distance predictive of permissive HLA-DPB1 mismatches in hematopoietic stem cell transplantation. *Biol Blood Marrow Transplant* 21:233-241, 2015
11. Fleischhauer K, Shaw BE, Gooley T, et al: Effect of T-cell-epitope matching at HLA-DPB1 in recipients of unrelated-donor haemopoietic-cell transplantation: A retrospective study. *Lancet Oncol* 13:366-374, 2012
12. IPD-IMGT/HLA: Release V3.43.0. <https://www.ebi.ac.uk/ipd/imgt/hla/>
13. Robinson J, Barker DJ, Georgiou X, et al: IPD-IMGT/HLA database. *Nucleic Acids Res* 48:D948-D955, 2020
14. Robinson J, Guethlein LA, Cereb N, et al: Distinguishing functional polymorphism from random variation in the sequences of >10,000 HLA-A, -B and -C alleles. *PLoS Genet* 13:e1006862, 2017
15. van Hateren A, Bailey A, Werner JM, et al: Plasticity of empty major histocompatibility complex class I molecules determines peptide-selector function. *Mol Immunol* 68:98-101, 2015
16. Petersdorf EW, O'Huigin C: The MHC in the era of next-generation sequencing: Implications for bridging structure with function. *Hum Immunol* 80:67-78, 2018
17. Petersdorf EW, Malkki M, Gooley TA, et al: MHC haplotype matching for unrelated hematopoietic cell transplantation. *PLoS Med* 4:e8, 2007
18. Petersdorf EW, Malkki M, O'Huigin C, et al: High HLA-DP expression and graft-versus-host disease. *N Engl J Med* 373:599-609, 2015
19. Mayor NP, Hayhurst JD, Turner TR, et al: Recipients receiving better HLA-matched hematopoietic cell transplantation grafts, uncovered by a novel HLA typing method, have superior survival: A retrospective study. *Biol Blood Marrow Transplant* 25:443-450, 2019
20. Hurley CK, Spellman S, Dehn J, et al: Regarding "recipients receiving better HLA-matched hematopoietic cell transplantation grafts, uncovered by a novel HLA typing method, have superior survival: A retrospective study". *Biol Blood Marrow Transplant* 25:e268-e269, 2019
21. Mayor NP, Hayhurst JD, Turner TR, et al: A reply to Hurley et al. regarding recipients receiving better HLA-matched hematopoietic cell transplantation grafts, uncovered by a novel HLA typing method, have superior survival: A retrospective study. *Biol Blood Marrow Transplant* 25:e270-e271, 2019
22. De Santis D, Truong L, Witt C, et al: Super high resolution hla matching by next generation sequencing improves the clinical outcomes of haematopoietic stem cell transplantation. *HLA* 93:276-277, 2019
23. Vazirabad I, Chhabra S, Nytes J, et al: Direct HLA genetic comparisons identify highly matched unrelated donor-recipient pairs with improved transplantation outcome. *Biol Blood Marrow Transplant* 25:921-931, 2019
24. Sorrow ML, Maris MB, Storb R, et al: Hematopoietic cell transplantation (HCT)-specific comorbidity index: A new tool for risk assessment before allogeneic HCT. *Blood* 106:2912-2919, 2005
25. Zeiser R, Blazar BR: Acute graft-versus-host disease—Biologic process, prevention, and therapy. *N Engl J Med* 377:2167-2179, 2017
26. Lee SJ, Klar N, Weeks JC, et al: Predicting costs of stem-cell transplantation. *J Clin Oncol* 18:64-71, 2000
27. Tram K, Stritesky G, Wadsworth K, et al: Identification of DPB1 permissive unrelated donors is highly likely. *Biol Blood Marrow Transplant* 23:81-86, 2017
28. Mayor NP, Robinson J, McWhinnie AJ, et al: HLA typing for the next generation. *PLoS One* 10:e0127153, 2015
29. Schöfl G, Lang K, Quenzel P, et al: 2.7 million samples genotyped for HLA by next generation sequencing: Lessons learned. *BMC Genomics* 18:161, 2017
30. Baier DM, Hofmann JA, Fischer H, et al: Very low error rates of NGS-based HLA typing at stem cell donor recruitment question the need for a standard confirmatory typing step before donor work-up. *Bone Marrow Transplant* 54:928-930, 2018
31. Majhail NS, Chitphakdithai P, Logan B, et al: Significant improvement in survival after unrelated donor hematopoietic cell transplantation in the recent era. *Biol Blood Marrow Transplant* 21:142-150, 2015
32. Gooley TA, Chien JW, Pergam SA, et al: Reduced mortality after allogeneic hematopoietic-cell transplantation. *N Engl J Med* 363:2091-2101, 2010
33. Shaw BE, Mayor NP, Russell NH, et al: Diverging effects of HLA-DPB1 matching status on outcome following unrelated donor transplantation depending on disease stage and the degree of matching for other HLA alleles. *Leukemia* 24:58-65, 2010



AUTHORS' DISCLOSURES OF POTENTIAL CONFLICTS OF INTEREST

Impact of Previously Unrecognized HLA Mismatches Using Ultrahigh Resolution Typing in Unrelated Donor Hematopoietic Cell Transplantation

The following represents disclosure information provided by the authors of this manuscript. All relationships are considered compensated unless otherwise noted. Relationships are self-held unless noted. I = Immediate Family Member, Inst = My Institution. Relationships may not relate to the subject matter of this manuscript. For more information about ASCO's conflict of interest policy, please refer to www.asco.org/rwc or ascopubs.org/jco/authors/author-center.

Open Payments is a public database containing information reported by companies about payments made to US-licensed physicians ([Open Payments](#)).

Stephanie J. Lee

Honoraria: Wolters Kluwer

Consulting or Advisory Role: Incyte, Pfizer, EMD Serono, Kadmon, MSD Oncology, Sanofi, Genzyme, Regeneron, 4SC

Research Funding: Kadmon, Takeda, Amgen, Bristol-Myers Squibb, EMD Serono, MSD, Novartis, Incyte, Syndax, Pfizer, AstraZeneca

Patents, Royalties, Other Intellectual Property: Patent pending for high-affinity T-cell receptors that target the Merkel polyomavirus

Jeffrey Auletta

Consulting or Advisory Role: MORE Health, AlloVir, AscellaHealth

Vijaya R. Bhatt

Consulting or Advisory Role: Abbvie, Incyte, Agios, Genentech, Rigel, Partnership for Health Analytic Research, LLC, Omeros, Takeda

Research Funding: Incyte, Tolero Pharmaceuticals, National Marrow Donor Program, Abbvie, Pfizer, Jazz Pharmaceuticals

Other Relationship: Oncoceutics, Novartis, Pfizer

Loren Grager

Other Relationship: National Marrow Donor Program/Be The Match, United Network For Organ Sharing

Yoshihiro Inamoto

Honoraria: Kyowa Kirin Co, Ltd, Astellas Pharma, Sumitomo Dainippon, Novartis, Chugai Pharma, Bristol-Myers Squibb, MSD K.K.

Consulting or Advisory Role: Novartis, Janssen, Meiji Seika Kaisha

Gerald P. Morris

Research Funding: Ferring Inc, Amgen

Travel, Accommodations, Expenses: Thermo Fisher Scientific

Sophie Paczesny

Patents, Royalties, Other Intellectual Property: Dr Paczesny has a patent on "Methods of detection of graft-versus-host disease" licensed to Viracor-IBT Laboratories

Ran Reshef

Consulting or Advisory Role: Atara Biotherapeutics, Novartis, Bristol-Myers Squibb, Gilead Sciences, TScan Therapeutics

Research Funding: Atara Biotherapeutics, Incyte, Pharmacyclics, Shire, Immatics, Takeda, Gilead Sciences, Precision Biosciences, Astellas Pharma, Bristol-Myers Squibb

Bronwen E. Shaw

Honoraria: Therakos

Consulting or Advisory Role: Orcabio

Peter Shaw

Consulting or Advisory Role: Novartis

Other Relationship: Link Pharma

No other potential conflicts of interest were reported.

APPENDIX

TABLE A1. Location of Variation Observed in the 5,140 Pairs Previously Characterized as 10 out of 10 HLA High-Resolution–Matched After Ultrahigh Resolution HLA Typing

Parameter	HLA-A	HLA-B	HLA-C	HLA-DRB1	HLA-DQB1	HLA-DPB1
Matching level						
Matched	4,681	4,941	4,846	5,106	5,101	782
One mismatch	450	199	292	33	39	2,867
Two mismatches	9	0	2	1	0	1,491
Location of mismatches						
Protein	15	21	22	26	21	5,839
Synonymous	84	39	32	9	18	10
Noncoding (intron and UTR)	369	139	242	—	—	—
Total variants	468	199	296	35	39	5,849

NOTE. Pairs may have had more than one variant; thus, total pairs with coding and noncoding variants do not correlate with the total mismatched pairs. Abbreviation: UTR, untranslated regions.

TABLE A2. Multivariate Analysis for 12 out of 12 Versus 12 out of 12 CDS-Matched Versus CDS-Mismatched Pairs in the Full Cohort

Outcome	Variable	Full Cohort		
		No. of Cases	HR (95% CI)	P
OS	Overall			.7605
	12 out of 12	627	1.00	
	12 out of 12 CDS-matched	104	0.90 (0.66 to 1.23)	.5223
	Mismatched	4,379	1.01 (0.90 to 1.13)	.8838
DFS	Overall			.7009
	12 out of 12	625	1.00	
	12 out of 12 CDS-matched	102	0.91 (0.70 to 1.19)	.4958
	Mismatched	4,332	0.97 (0.89 to 1.07)	.5781
TRM	Overall			.8371
	12 out of 12	620	1.00	
	12 out of 12 CDS-matched	102	0.93 (0.59 to 1.46)	.7433
	Mismatched	4,321	1.02 (0.87 to 1.20)	.7789
Relapse	Overall			.4597
	12 out of 12	621	1.00	
	12 out of 12 CDS-matched	103	0.87 (0.62 to 1.23)	.4424
	Mismatched	4,316	0.93 (0.80 to 1.07)	.2939
aGVHD (grades 2-4)	Overall			.0183
	12 out of 12	590	1.00	
	12 out of 12 CDS-matched	93	1.01 (0.73 to 1.41)	.9397
	Mismatched	4,135	1.20 (1.06 to 1.37)	.0055
cGVHD	Overall			.7661
	12 out of 12	624	1.00	
	12 out of 12 CDS-matched	105	1.03 (0.84 to 1.27)	.7676
	Mismatched	4,253	0.97 (0.86 to 1.08)	.5502
ANC	Overall			.6957
	12 out of 12	628	1.00	
	12 out of 12 CDS-matched	105	1.07 (0.90 to 1.28)	.4490
	Mismatched	4,367	1.03 (0.95 to 1.12)	.4728

Abbreviations: aGVHD, acute graft-versus-host disease; ANC, absolute neutrophil count; CDS, coding DNA sequence; cGVHD, chronic graft-versus-host disease; DFS, disease-free survival; HR, hazard ratio; OS, overall survival; TRM, transplant-related mortality.

TABLE A3. Multivariate Analysis for 12 out of 12 Versus 12 out of 12 CDS Versus Mismatched Pairs in the T-Cell–Depleted and T-Cell–Replete Subcohorts

Outcome	Variable	T-Cell–Depleted			T-Cell–Replete		
		No. of Cases	HR (95% CI)	P	No. of Cases	HR (95% CI)	P
OS	Overall			.0969			.7538
	12 out of 12	243	1.00		384	1.00	
	12 out of 12 CDS-matched	33	0.80 (0.53 to 1.21)	.2893	71	0.97 (0.67 to 1.42)	.8914
	Mismatched	1,752	1.15 (0.98 to 1.36)	.0837	2,627	0.95 (0.82 to 1.09)	.4552
DFS	Overall			.6338			.4492
	12 out of 12	240	1.00		385	1.00	
	12 out of 12 CDS-matched	33	0.90 (0.60 to 1.34)	.5978	69	0.92 (0.65 to 1.30)	.6408
	Mismatched	1,732	1.05 (0.91 to 1.22)	.4765	2,600	0.93 (0.83 to 1.05)	.2251
TRM	Overall			.0116			.3771
	12 out of 12	239	1.00		381	1.00	
	12 out of 12 CDS-matched	33	0.67 (0.29 to 1.57)	.3536	69	1.04 (0.61 to 1.76)	.8971
	Mismatched	1,730	1.34 (1.06 to 1.70)	.0131	2,591	0.89 (0.72 to 1.11)	.3168
Relapse	Overall			.3883			.6212
	12 out of 12	240	1.00		381	1.00	
	12 out of 12 CDS-matched	34	1.01 (0.58 to 1.73)	.9837	69	0.81 (0.52 to 1.25)	.3362
	Mismatched	1,724	0.88 (0.73 to 1.06)	.1834	2,592	0.97 (0.77 to 1.21)	.7627
aGVHD (grades 2-4)	Overall			.0985			.0702
	12 out of 12	230	1.00		360	1.00	
	12 out of 12 CDS-matched	31	0.82 (0.46 to 1.45)	.4904	62	1.09 (0.72 to 1.66)	.6775
	Mismatched	1,675	1.18 (0.97 to 1.44)	.0908	2,460	1.21 (1.03 to 1.43)	.0212
cGVHD	Overall			.7864			.3181
	12 out of 12	240	1.00		384	1.00	
	12 out of 12 CDS-matched	34	0.85 (0.47 to 1.53)	.5823	71	1.10 (0.89 to 1.36)	.3839
	Mismatched	1,690	1.03 (0.82 to 1.31)	.7789	2,563	0.93 (0.80 to 1.08)	.3485
ANC	Overall			.6057			.8392
	12 out of 12	244	1.00		384	1.00	
	12 out of 12 CDS-matched	34	1.20 (0.84 to 1.71)	.3232	71	1.06 (0.86 to 1.32)	.5801
	Mismatched	1,747	1.03 (0.95 to 1.12)	.6276	2,620	1.02 (0.93 to 1.13)	.6243

Abbreviations: aGVHD, acute graft-versus-host disease; ANC, absolute neutrophil count; CDS, coding DNA sequence; cGVHD, chronic graft-versus-host disease; DFS, disease-free survival; HR, hazard ratio; OS, overall survival; TRM, transplant-related mortality.