

IKZF1 alterations are not associated with outcome in 498 adults with B-precursor ALL enrolled in the UKALL14 trial

Rachel J. Mitchell,¹ Amy A. Kirkwood,² Emilio Barretta,³ Laura Clifton-Hadley,² Emma Lawrie,² SooWah Lee,¹ Daniel Leongamornlert,⁴ David I. Marks,⁵ Andrew K. McMillan,⁶ Tobias F. Menne,⁷ Elli Papaemmanuil,⁸ Bela Patel,⁹ Pip Patrick,² Clare J. Rowntree,¹⁰ Nahid Zareian,¹ Krisztina Zuborne Alapi,¹ Anthony V. Moorman,^{3,*} and Adele K. Fielding^{1,*}

¹Haematology and ²Cancer Research UK (CRUK) and University College London (UCL) Cancer Trials Centre, UCL Cancer Institute, UCL, London, United Kingdom and ³Northern Institute for Cancer Research, University of Newcastle upon Tyne, Newcastle upon Tyne, United Kingdom and ⁴Wellcome Sanger Centre, Hinxton, United Kingdom and ⁵United Bristol Healthcare Trust, Bristol, United Kingdom and ⁶Centre for Clinical Haematology, Nottingham City Hospital, Nottingham, United Kingdom and ⁷Newcastle Upon Tyne Hospitals National Health Service (NHS) Foundation Trust, Newcastle upon Tyne, United Kingdom and ⁸Memorial Sloan Kettering Cancer Center, New York, NY and ⁹Barts Cancer Institute, The London School of Medicine, Queen Mary University of London, London, United Kingdom; and ¹⁰Cardiff and Vale University Health Board (UHB), Wales, United Kingdom

Key Points

- We found no significant impact of any $\Delta IKZF1$ on survival outcomes among patients aged 23 to 65 years with ALL in the UKALL14 trial.
- The prognostic impact of $\Delta IKZF1$ on adult ALL remains to be determined in large harmonized data sets.

IKZF1 deletions ($\Delta IKZF1$) are commonly detected in B-precursor acute lymphoblastic leukemia (ALL; B-ALL) and are widely assumed to have a significant impact on outcome. We compared the ability of multiplex ligand-dependent probe amplification (MLPA) and polymerase chain reaction (PCR) to detect $\Delta IKZF1$ and to determine the impact on event-free survival of patients with precursor B-ALL aged 23 to 65 years recruited to the completed trial UKALL14 (ISRCTN 66541317). From 655 recruits with *BCR-ABL1*⁺ and *BCR-ABL1*⁻ B-ALL, all available diagnostic DNA samples (76% of the recruited population) were screened by multiplex end point PCR covering 4 deletions: dominant-negative (DN) $\Delta 4-7$ or the loss of function $\Delta 2-7$, $\Delta 4-8$, and $\Delta 2-8$ (n = 498), MLPA (n = 436), or by both (n = 420). Although patients with *BCR-ABL1*⁻ $\Delta IKZF1$ were more likely to have minimal residual disease at the end of induction, we did not find any impact of $\Delta IKZF1$ (including subgroup analysis for DN or loss-of-function lesions) or the *IKZF1*plus genotype on event-free, overall survival, or relapse risk by univariable or multivariable analyses. Consistent with the technical approach, MLPA not only detected a wider range of deletions than PCR but also failed to detect some PCR-detected lesions. The main difference between our study and others reporting an association between $\Delta IKZF1$ and outcome is the older age of participants in our population. The impact of $\Delta IKZF1$ in ALL may be less marked in an older population of patients. Our study underscores the need for analyses in large, harmonized data sets. This trial was registered at www.clinicaltrials.gov as #NCT01085617.

Introduction

In B-precursor acute lymphoblastic leukemia (ALL; B-ALL), deletions of the transcription factor Ikaros, encoded by *IKZF1*, occur in up to 70% of *BCR-ABL1*⁺ and 30% of *BCR-ABL1*⁻ cases and have been associated with a higher risk of primary treatment failure in both pediatric and adult disease.¹⁻³ Despite its potential clinical utility, the optimal approach for defining *IKZF1* status in a clinical setting also remains uncertain. In normal B-cell ontogeny, *IKZF1* is a crucial protein for development and

Submitted 3 February 2021; accepted 3 May 2021; published online 3 September 2021. DOI 10.1182/bloodadvances.2021004430.

*A.V.M. and A.K.F. contributed equally.

Please contact the corresponding author with any requests for data sharing at a.fielding@ucl.ac.uk.

The full-text version of this article contains a data supplement.

© 2021 by The American Society of Hematology

differentiation. Alternative splicing generates normal Ikaros isoforms, which differ in their subcellular localization and functional properties, depending on which part of the protein is expressed. *IKZF1* deletion ($\Delta IKZF1$) lesions, mediated by RAG enzyme complex-mediated cleavage at the heptamer sequence,¹ result in several different types of deletions. Those which delete exons 4 to 7 ($\Delta IKZF1$ 4-7) lead to short, nonfunctional, cytoplasmically retained isoforms that do not bind DNA. However, in retaining the C-terminal zinc finger domains, they can still dimerize with residual normal isoforms, suppressing function of the normal Ikaros protein expressed from the nondeleted allele, the so-called “dominant-negative” (DN) effect.⁴⁻⁶ Other deletions lead to loss of function (LOF). There is some evidence of differential impact of LOF vs DN lesions on prognosis in ALL.^{7,8}

In the present study, we evaluated diagnostic specimens from all patients with available DNA who were enrolled in the UK National Cancer Research Institute trial for adults with de novo B-ALL (Standard Chemotherapy With or Without Nelarabine or Rituximab in Treating Patients With Newly Diagnosed Acute Lymphoblastic Leukemia [UKALL14 (ISRCTN 66541317)]). We sought to determine (1) the relationship between *IKZF1* lesions and survival outcomes and (2) the optimal method to ascertain *IKZF1* status in a clinical context by comparing a multiplex polymerase chain reaction (PCR) assay with standard multiplex ligand-dependent probe amplification (MLPA).

Methods

Patients

Between December 2010 and July 2018, all patients were enrolled in the UKALL14 study, a multicenter phase 3 clinical trial that recruited patients aged 25 to 65 years with de novo *BCR-ABL1*⁻ ALL and patients aged 23 to 65 years with *BCR-ABL1*⁺ ALL. All patients gave written informed consent to trial treatment and correlative science studies. The study was conducted in accordance with the Declaration of Helsinki. Approval was given by the UK Research Ethics Committee (16/LO/2055). Wherever possible, cytogenetic subgroup was determined locally by conventional cytogenetics and fluorescence in situ hybridization, and results were collated and centrally reviewed by A.V.M. at the Leukaemia Research Cytogenetics Group (Newcastle University). In the case of *BCR-ABL1*, the breakpoint was confirmed by PCR.

UKALL14 therapy

Summary details of UKALL14 treatment are provided in Figure 1. In summary, all patients underwent a 2-phase induction, followed by stratification to continuing chemotherapy or allogeneic stem cell transplant (alloSCT) based on a risk assessment. “High risk” was defined by the presence of *BCR-ABL1*, *KMT2A-AFF1*, low hypodiploidy/near triploidy, or complex karyotype; presenting white blood cell count (WBC) $>30 \times 10^9/L$; any level of minimal residual disease (MRD) at the end of the second phase of induction; and age ≥ 41 years. Patients with any of these features were assigned to alloSCT if they were fit and had a 10 of 10 antigen-matched sibling or unrelated donor. Conditioning was myeloablative for patients aged up to 41 years. The safety and efficacy of nonmyeloablative alloSCT was evaluated as a trial question for patients 41 years of age and older. Patients with B-ALL were randomized between standard of care or standard of care plus 4 doses of rituximab given during the first phase of induction.

Diagnostic sample processing

All diagnostic samples were processed by the UK Adult ALL MRD laboratory at the UCL Cancer Institute. Bone marrow samples were layered onto Lymphosep separation (MP Biochemicals Europe) and spun at 1600 rpm for 30 minutes at room temperature to isolate ALL blasts. Where possible, DNA extraction was performed on at least 1×10^7 cells using the DNeasy mini kit (Qiagen) and diluted to a concentration between 50 and 150 ng/ μL using AE buffer (Qiagen). Concentration and purity were checked by measuring absorbance at 260 nm and 280 nm using a Nanodrop spectrophotometer (Thermo Scientific). Final DNA concentration and quality were assessed by TaqMan (Thermo Scientific) real-time quantitative PCR amplification of the albumin housekeeping gene, and compared with a standard curve derived from human genomic DNA (Bioline).

MLPA and *IKZF1*plus definition

MLPA assays were prepared and analyzed at the Leukaemia Research Cytogenetics Group, Newcastle University, and were performed on DNA extracted from the diagnostic sample using the SALSA MLPA P335 kit (ALL-*IKZF1*, versions B1, B2, and C1) and the P327 kit (iAMP21-*ERG*, version B2) (MRC Holland, The Netherlands), as previously described.⁹ Analysis was carried out with GeneMarker V1.85 analysis software (SoftGenetics) and Coffalyser (MRC Holland). *IKZF1*plus was defined as per standard: $\Delta IKZF1$ with concomitant *CDKN2A/B*, *PAX5*, or *PAR1* region deletion, in the absence of an *ERG* deletion. Among 170 cases with $\Delta IKZF1$, 93 had concomitant deletions of the *CDKN2A/B*, *PAX5*, or *PAR1* region. *ERG* deletions are synonymous with *IGH-DUX4* fusion and are extremely rare in other genetic subgroups. Among these 93 cases, 68 had an established primary genetic abnormality (*BCR-ABL1*, $n = 49$; *JAK-STAT*, $n = 14$; *ZNF384* fusion, $n = 1$; *KMT2A* fusion, $n = 1$; *TCF3-PBX1*, $n = 1$; *ABL* class, $n = 1$; low hypodiploid, $n = 1$) and were assumed not to harbor an *ERG* deletion. Among the remaining 25 cases, 18 were tested by MLPA (none had an *ERG* deletion) and 7 were not tested for *ERG* due to lack of material. Thus, the final cohort of *IKZF1*plus cases comprised 93 cases including 7 cases not specifically tested for *ERG*.

PCR

Diagnostic DNA specimens were screened for the 4 most common *IKZF1* intergenic deletions: $\Delta 4-7$, $\Delta 2-7$, $\Delta 4-8$, and $\Delta 2-8$ by end point multiplex PCR as described by Caye et al¹⁰ using a DYAD thermocycler. Albumin amplification served as internal control (details available in supplemental Methods). DNA from the *IKZF1*-deleted cell line SUP-B15 served as positive control. All PCR products were analyzed on a 10% polyacrylamide gel, purified using Illustra ExoProStar (GE Healthcare), and subjected to Sanger sequencing by Eurofins Genomics to determine the breakpoints. Sequence was analyzed using Seqman Lasergene software (DNASTAR). The lower limit of detection of the PCR assay was 10^{-4} as determined by serial 10-fold dilutions of the $\Delta 4-7$ positive cell line SUP-B15.

MRD analysis

MRD analysis done in a single, central EuroMRD-accredited laboratory detected and quantified patient-specific immunoglobulin and T-cell receptor (TCR) gene rearrangements by real-time quantitative PCR for all those with *BCR-ABL1*⁻ ALL or *BCR-ABL1* transcripts

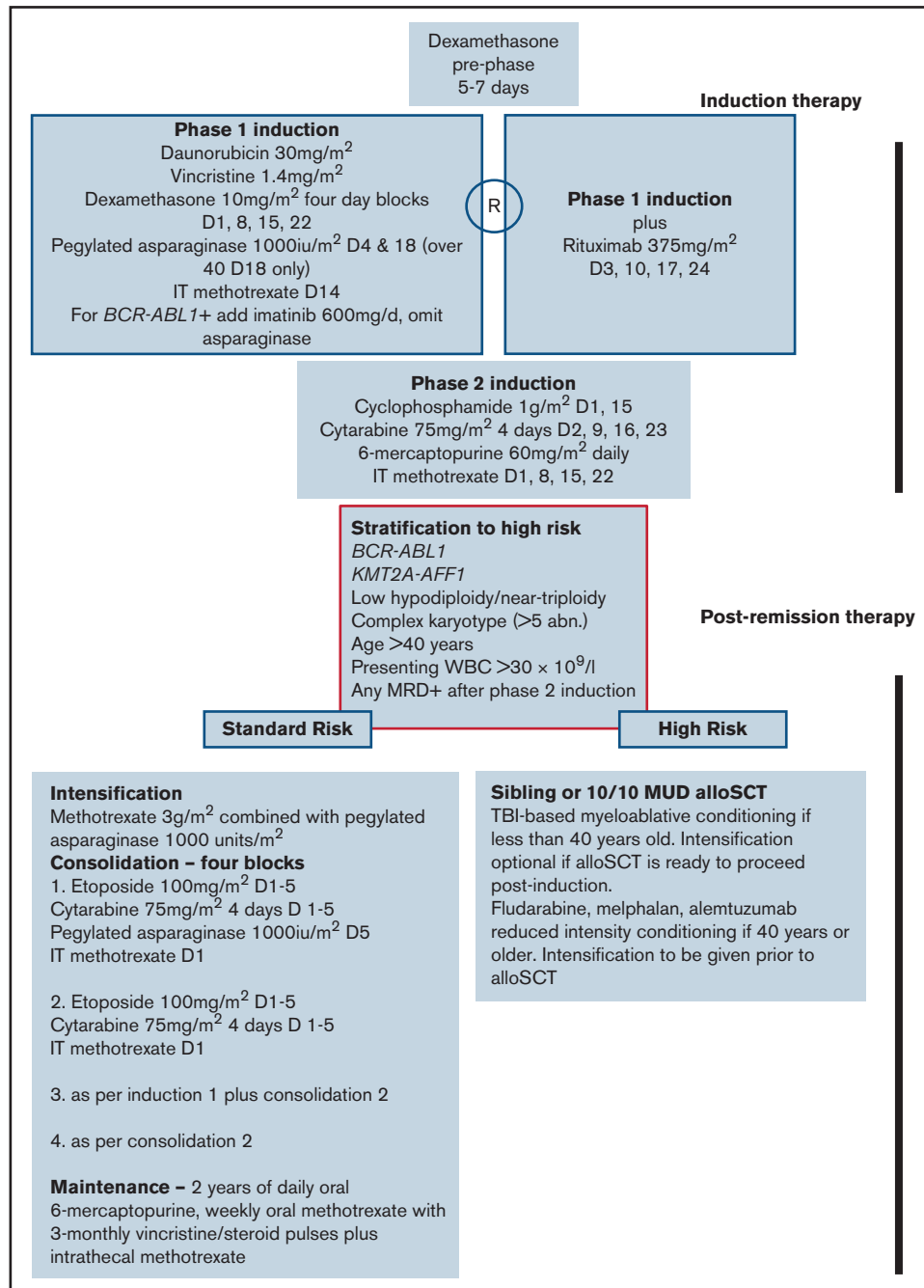


Figure 1. Schematic of the UKALL14 protocol with drug regimens outlined.

for those with *BCR-ABL1*⁺ ALL. MRD analysis was performed and interpreted strictly according to EuroMRD guidelines.¹¹ Within the trial protocol, all of those with missing MRD data or results that were classified as “positive outside of the quantitative range” (POQR) or “indeterminate” were assumed as negative for the purposes of treatment assignment.

Statistical analysis

Event-free survival (EFS) and overall survival (OS) times were calculated from the date of randomization until the date of the first event

(relapse and death for EFS or death for OS) with patients not experiencing an event censored at the date last seen. Time to relapse was calculated, including only those who achieved remission after induction, as the time from first remission until relapse. Competing risks analysis by the method of Fine and Gray was used, with death in first remission treated as a competing risk. Comparisons between groups were made using χ^2 or Fisher exact tests (discrete variables), Student *t* tests or Wilcoxon Mann-Whitney tests (continuous variables), or Cox regression and the log-rank test (time-to-event variables).

Table 1. Patient characteristics, comparing those with and without PCR and/or MLPA data to the main trial population

	PCR sample, N = 498	No PCR sample, N = 157	P*	MLPA sample, N = 436	No MLPA sample, N = 219	P*	All eligible UKALL14 B-cell patients, N = 655
Rituximab given, N (%)	256 (51.4)	71 (45.2)		222 (50.9)	105 (47.9)		327 (49.9)
Median age (range), y	46.0 (23-65)	47.0 (22-65)	.11	45.0 (23-65)	48.0 (22-65)	<.001	46.0 (22-65)
Age over 40 y at randomization group, N (%)	315 (63.3)	107 (68.2)	.26	264 (60.6)	158 (72.1)	.003	422 (64.4)
Sex, N (%)			.71			.89	
Male†	270 (54.2)	88 (56.1)		239 (54.8)	119 (54.3)		358 (54.7)
ECOG, score 0 N (%)	304 (61.5)	94 (61.0)	.91	266 (61.4)	132 (61.4)	.99	398 (61.4)
Baseline WBC	9.7 (0.11-889.6)	4.7 (0.4-372)	<.001	10.7 (0.11-889.6)	4.9 (0.4-372)	<.001	8.0 (0.11-889.6)
Genetic subgroup, N (%)							
BCR-ABL1 ⁺	167 (33.5)	31 (19.7)	.001	154 (35.3)	44 (20.1)	<.001	198 (30.2)
Complex karyotype	17 (3.4)	4 (2.5)	NA	14 (3.2)	7 (3.2)	NA	21 (3.2)
High hyperdiploid	10 (2.0)	3 (1.9)	NA	9 (2.1)	4 (1.8)	NA	13 (2.0)
JAK-STAT lesions	26 (5.2)	8 (5.1)	NA	26 (6.0)	8 (3.7)	NA	34 (5.2)
KMT2A other	7 (1.4)	2 (1.3)	NA	6 (1.4)	3 (1.4)	NA	9 (1.4)
KMT2A-AFF1	42 (8.4)	7 (4.5)	NA	40 (9.2)	9 (4.1)	NA	49 (7.5)
Low hypodiploid/Near-triploid	36 (7.2)	17 (10.8)	NA	3 (0.7)	50 (22.8)	NA	53 (8.1)
Other	123 (24.7)	49 (31.2)	NA	123 (28.2)	49 (22.4)	NA	172 (26.3)
TCF3-PBX1	14 (2.8)	0	NA	14 (3.2)	0	NA	14 (2.1)
Failed or missing	56 (11.2)	36 (22.9)		47 (10.8)	45 (20.5)		92 (14.0)
Baseline UKALL 14 risk, N (%)			.76			.050	
High risk‡	420 (84.3)	126 (80.3)		356 (81.7)	190 (86.8)		546 (83.4)
<i>IKZF1</i> deleted by PCR, N (%)	114 (22.9)			106 (25.2)			114 (22.9)
<i>IKZF1</i> deleted by MLPA, N (%)	165 (39.3)			170 (39.0)			170 (39.0)

ECOG, Eastern Cooperative Oncology Group; NA, P values not provided where numbers too low for meaningful comparisons (P values for BCR-ABL status compare positive vs negative).

* χ^2 unless otherwise specified (missing values excluded).

†There was 1 patient who was intersex (genetically male but identified as female: they have been excluded from all comparisons using sex).

‡For the purposes of the trial, patients missing risk factor data (but no high-risk factors in the data available) were assumed to be standard risk. For any comparisons, these patients were excluded (75% of all B-cell patients).

The assumption of proportional hazards was tested using the Schoenfeld residuals. Analyses were performed using STATA version 15.1 (STATA Corp).

Results

Frequency and subclassification of $\Delta IKZF1$ lesions

Of 655 eligible patients enrolled into the B-cell arm of UKALL14, 498 had sufficient diagnostic DNA for *IKZF1* screening by PCR (N = 498), MLPA (N = 436), or both (N = 420). The baseline characteristics of the patients screened by each technique compared with those who could not be screened are shown in Table 1. The baseline characteristics of the overall population are also given. The P values show a comparison between those who could and could not be screened for each technique. There was a modest but statistically significantly higher presenting WBC in the screened population compared with the nonscreened population for both MLPA and PCR, reflecting the greater availability of stored material for experimental analyses. There were also more likely to be samples available in *BCR-ABL1*⁺ ALL. A consort diagram representing the $\Delta IKZF1$ status of all enrolled patients is shown in Figure 2.

The large number of samples screened by both PCR and MLPA allowed a robust comparison between methods. Table 2 summarizes the specific lesions detected and shows the concordance between PCR and MLPA. Overall, there was disagreement between the methods in 87 of 420 cases. PCR identified $\Delta IKZF1$ in 14 patients in whom MLPA did not detect a deletion and MLPA identified $\Delta IKZF1$ in 73 patients in whom PCR did not detect a deletion. Fifty-three $\Delta IKZF1$ lesions (in 52 patients) were identified by MLPA but not PCR: 1-2 (N = 8), 1-3 (N = 3), 1-7 (N = 3), 1-8 (N = 34), 2-3 (N = 4) and 6-8 (N = 1); these lesions were “expectedly discordant” as the PCR assay was not designed to identify them. PCR detected 21 lesions not seen by MLPA, likely due to the higher sensitivity of the technique.

The relationship between baseline characteristics and the various $\Delta IKZF1$ lesions as determined by both PCR and MLPA is shown in Table 3. Patients with $\Delta IKZF1$ lesions were slightly but significantly older than those without and had significantly higher presenting WBCs. As expected, $\Delta IKZF1$ lesions were much more common in *BCR-ABL1*⁺ ALL than *BCR-ABL1*⁻ ALL, whereas there was only 1 case detected in each of *KMT2A-AFF1* and low hypodiploid/near-triploid ALL.

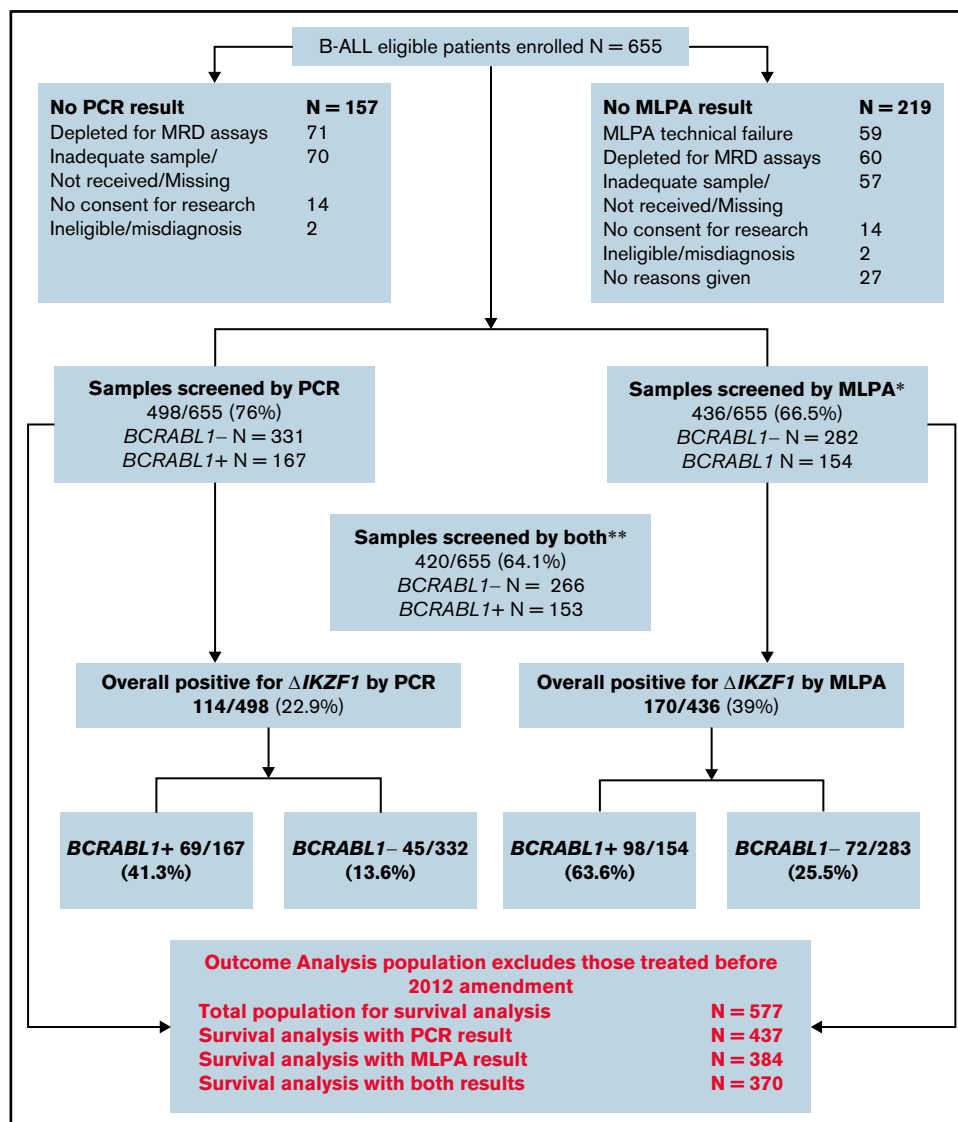


Figure 2. Consort diagram showing derivation of specimens from the total patient population. *N = 59 additional samples that were subjected to MLPA and failed quality control. **A small number of samples underwent MLPA but not PCR.

Population analyzed for survival outcomes

Survival analyses were confined to those patients treated after an April 2012 protocol amendment that was made because of excess toxicity in the *BCR-ABL1*⁺ cohort.¹² Hence, the relationship between $\Delta IKZF1$ and MRD and survival outcomes was analyzed for those recruited after that amendment. The outcome analysis population with available $\Delta IKZF1$ screens differed from the non- $\Delta IKZF1$ screened population in exactly the same way as demonstrated for the overall population, as shown in supplemental Table 1. Outcomes for the PCR cohort are based on 437 patients; for the MLPA cohort, 384 patients; and for those tested by both methods, 370 patients (as per Figure 2). The 3-year OS of this overall population, at a median follow-up of 50 months, is 53.1% (49.1% to 57.1%), and is 54.3% (49.3% to 59.0%) for the PCR-screened group, and 55.3% (50.0% to 60.3%) for the MLPA-screened group. The

corresponding EFS was 46.1% (42.1% to 50.0%), 46.4% (41.4% to 51.2%), and 47.0% (41.7% to 52.1%). Cumulative incidence of relapse (CIR) was 29.0% (25.4% to 32.9%), 31.3% (26.8% to 36.2%) for the PCR-screened group, and 30.2% (25.6% to 35.4%) for the MLPA-screened group (Kaplan-Meier survival curves illustrating these data are shown in supplemental Figure 1).

Relationship between *IKZF1* status and MRD

The relationship between *IKZF1* status and MRD levels is shown in Table 4. Patients with MRD values POQR or indeterminate were grouped with “negative” in order to follow the treatment stratification used in the trial. An end-of-induction MRD result was a prerequisite for inclusion in this analysis. Overall, those with $\Delta IKZF1$ were significantly more likely to have a positive MRD result. When the outcomes for *BCR-ABL1*⁻ and *BCR-ABL1*⁺ ALL were analyzed

Table 2. Comparison between PCR and MLPA at detection of *IKZF1* deletions

PCR	MLPA	No. of patients	
PCR Negative N=384	MLPA negative	241	
	Positive (expected)	52	
	Δ1-2	7	
	Δ1-3	3	
	Δ2-3	4	
	Δ1-7	3	
	Δ1-8 (WG)	34	
	Δ1-2+Δ6-8	1	
	Positive (not expected)	21	
	Δ2-8	7	
	Δ4-8	4	
	Δ2-7	4	
	Δ4-7	2	
	unknown del	1	
	Δ2-7(+Δ2-3)	2	
	Δ4-8(+Δ1-2)	1	
	MLPA Fail	45	
	No MLPA Result	25	
	PCR Positive N=114	MLPA Positive	75
		Δ2-8	3
Δ4-8		11	
Δ2-7		15	
Δ4-7		39	
Δ2-7 + 2-8		1	
Δ2-7 + 4-7		3	
Δ4-7 + 4-8		3	
MLPA positive, Incongruous with PCR)		17	
Expected (not detectable by PCR)		5	
Not expected (detectable by PCR)		10	
Unknown del		2	
No MLPA result		2	
PCR positive		MLPA negative	14
	Δ4-7	8	
	Δ2-7	2	
	Δ4-8	4	
PCR positive	MLPA Fail	6	
	Δ4-7	4	
	Δ4-8	2	

WG, whole gene.

separately, a significant difference in the rate of MRD positivity in the presence of $\Delta IKZF1$ was only evident for patients with $BCR-ABL1^-$ ALL. By PCR, only 23% of $IKZF1$ wild type (WT) had residual MRD vs 48.6% of those with any $\Delta IKZF1$ lesion ($P = .002$). One-half of patients with LOF lesions (50%) and 47.4% of patients with DN lesions were MRD⁺: both types of lesion were significantly more likely to be associated with residual MRD than $IKZF1$ WT,

$P = .019$ and $P = .023$, respectively. By MLPA, similar differences were seen in all $\Delta IKZF1$ lesions: 23.8% of $IKZF1$ WT patients had residual MRD vs 47.6% with $\Delta IKZF1$ ($P = .021$). The $IKZF1$ plus genotype had higher MRD positivity rates than WT (33.3%) although this was not significant ($P = .26$). As assessed by MLPA, greater numbers of patients with either DN or LOF lesions were MRD⁺ but the differences did not reach statistical significance.

Impact of $IKZF1$ status on EFS, OS, and relapse risk

Next, we determined the impact of $IKZF1$ status on survival and relapse outcomes. There was no evidence of any impact on EFS of $\Delta IKZF1$ detected by PCR (hazard ratio [HR], 0.93 [0.69-1.26]; $P = .64$) or when $\Delta IKZF1$ was detected by MLPA (HR, 1.07 [0.81-1.40]; $P = .63$). Although a different effect was again seen between $BCR-ABL1^-$ and $BCR-ABL1^+$ ALL, neither the difference nor the interaction were statistically significant. Kaplan-Meier curves for EFS and OS in the presence or absence of $\Delta IKZF1$ or $IKZF1$ plus for $BCR-ABL1^-$ and $BCR-ABL1^+$ ALL are shown in supplemental Figure 2.

All subsequent analyses were performed within $BCR-ABL1^-$ and $BCR-ABL1^+$ cohorts separately. Table 5 shows univariable and multivariable EFS and OS HRs for the effect of PCR $\Delta IKZF1$ deletion, including deletion type, that is, DN or LOF $IKZF1$ lesions, split by $BCR-ABL1$ status. In all analyses, there was no evidence of an increased risk of an event for patients with any type of deletion. Due to a significant interaction between $IKZF1$ and the $BCR-ABL1$ breakpoint, an interaction term was also included in the multivariable model for $BCR-ABL1^+$ ALL, with HRs presented for each breakpoint. Here, significant results were seen for the p190 breakpoint, although paradoxically, they appear to show a protective effect of $\Delta IKZF1$ deletion. The MLPA analysis also allowed evaluation of the $IKZF1$ plus profile. Here, patients were analyzed in 3 groups: no deletion (reference group), $\Delta IKZF1$ deleted but without the $IKZF1$ -plus profile, and $IKZF1$ plus. Results for EFS and OS in this group are shown in supplemental Table 2. Again, no significant negative effects were seen within the whole population or within $BCR-ABL1^-$ cases. There was 1 borderline significant result for p210 breakpoint DN $BCR-ABL1^+$ ALL, but this was based on just 6 events in 11 patients. All multivariable analyses were rerun, including interactions between $\Delta IKZF1$ and randomized treatment arms (rituximab plus standard of care or standard of care alone), all showing no evidence that treatment with rituximab had modified the effect of $\Delta IKZF1$. Similarly, there was no impact of any $\Delta IKZF1$, any subtype of $\Delta IKZF1$, or $IKZF1$ plus on relapse risk in univariable or multivariable analyses (supplemental Table 3) including a model also adjusted for end-of-induction MRD. To ensure that we had not introduced bias by excluding the patients with the worst outcome who did not achieve remission at all, the EFS analysis was repeated, including primary refractory disease as an event. Even in this case, $\Delta IKZF1$ detected by either method did not have a statistically significant relationship with outcome (data not shown).

Subgroup analyses

Forest plots for EFS for both PCR- and MLPA-determined $IKZF1$ status are shown in Figure 3. The plots show the impact of $IKZF1$ status within key variables for $BCR-ABL1^+$ and $BCR-ABL1^-$ ALL, separately. There are no subgroups that showed a statistically significant negative impact of $IKZF1$ status. The same was seen for OS (data not shown).

Table 3. Relationship between *IKZF1* lesions and baseline characteristics for both PCR and MLPA methods

	<i>IKZF1</i> WT	Δ <i>IKZF1</i> *	<i>IKZF1</i> plus*	P†	Δ <i>IKZF1</i> LOF	Δ <i>IKZF1</i> DN	P†
PCR-determined	N = 384	N = 114		Deleted vs WT	N = 48	N = 66	
Age, median (range), y	45.0 (23-65)	48.0 (25-65)		.13	47.5 (25-64)	48.0 (26-65)	.46/.13
Age over 40 y at randomization, N (%)	240 (62.5)	75 (65.8)		.52	31 (64.6)	44 (66.7)	.78/.52
Male sex,‡ N (%)	212 (55.2)	58 (50.9)		.40	28 (58.3)	30 (45.5)	.70/.14
ECOG 0, N (%)	236 (62.1)	68 (59.6)		.63	24 (50.0)	44 (66.7)	.10/.48
Baseline WBC (range x 10 ⁹ /L)	8.5 (0.11-889.6)	14.3 (0.6-341.28)		.016	14.1 (1.6-223.7)	15.0 (0.6-341.28)	.059/.079
Genetic subtype, N (%)							
<i>BCR-ABL1</i>	98 (25.5)	69 (60.5)		<.0001	29 (60.4)	40 (60.6)	<.0001/<.0001
Complex karyotype	15 (3.9)	2 (1.8)		.58	0	2 (3.0)	.71/.75
Failed/no data	50 (13.0)	6 (5.3)		NA	2 (4.2)	4 (6.1)	NA
High hyperdiploid	10 (2.6)	0		NA	0	0	NA
JAK-STAT	10 (2.6)	16 (14.0)		NA	10 (20.8)	6 (9.1)	NA
<i>KMT2A</i> other	7 (1.8)	0		NA	0	0	NA
<i>KMT2A-AFF1</i>	41 (10.7)	1 (0.9)		.001	0	1 (1.5)	.008/.011
Low hypodiploid/Near triploid	35 (9.1)	1 (0.9)		.002	0	1 (1.5)	.022/.027
Other	104 (27.1)	19 (16.7)		NA	7 (14.6)	12 (18.2)	NA
<i>TCF3-PBX1</i>	14 (3.6)	0		NA	0	0	NA
UKALL14 high risk, N (%)	319 (83.1)	101 (88.6)		.57	43 (89.6)	58 (87.9)	.48/.18
MLPA-determined x 10⁹/L	N = 235	N = 66	N = 83	Deleted vs WT/ <i>IKZF1</i>plus vs WT	N = 100	N = 46	LOF vs WT/ DN vs WT
Age, median (range), y	44.0 (23-65)	43.0 (25-64)	49.0 (25-65)	.69/.0017	45.0 (25-63)	49.0 (26-65)	.14/0.099
Age over 40 y at randomization, N (%)	154 (57.9)	44 (57.1)	66 (71.0)	.91/.0026	73 (63.5)	36 (69.2)	.31/.13
Male sex,‡ N (%)	143 (53.8)	47 (61.0)	49 (52.7)	.27/.83	69 (60.0)	26 (50.0)	.28/.60
ECOG 0, N (%)	158 (60.1)	47 (61.0)	61 (65.6)	.88/.35	68 (59.1)	37 (71.2)	.86/.13
Baseline WBC (range)	7.9 (0.11-889.6)	15.5 (1.1-213)	19.8 (0.6-453.9)	.037/.0023	18.2 (0.9-453.9)	14.7 (0.6-213)	.0003/.27
Genetic subtype, N (%)							
<i>BCR-ABL1</i>	56 (21.1)	49 (63.6)	49 (52.7)	<.0001/<.0001	64 (55.7)	32 (61.5)	<.0001/<.0001
Complex karyotype	11 (4.1)	0	3 (3.2)	.31/.57	1 (0.9)	2 (3.8)	>.99>
Failed/no data	38 (14.3)	4 (5.2)	5 (5.4)	NA	5 (4.3)	4 (7.7)	NA
High hyperdiploid	9 (3.4)	0	0	NA	0	0	NA
JAK-STAT	7 (2.6)	5 (6.5)	14 (15.1)	NA	15 (13.0)	4 (7.7)	NA
<i>KMT2A</i> other	5 (1.9)	1 (1.3)	0	NA	1 (0.9)	0	NA
<i>KMT2A-AFF1</i>	38 (14.3)	1 (1.3)	1 (1.1)	<.0001/<.0001	1 (0.9)	0	<.0001/.001
Low hypodiploid/near-triploid	2 (0.8)	0	1 (1.1)	>.99>	1 (0.9)	0	>.99>
Other	88 (33.1)	16 (20.8)	19 (20.4)	NA	25 (21.7)	10 (19.2)	NA
<i>TCF3-PBX1</i>	12 (4.5)	1 (1.3)	1 (1.1)	NA	2 (1.7)	0	NA
UKALL14 high risk baseline	206 (77.4)	65 (84.4)	85 (91.4)	.14/.009	206 (77.4)	65 (84.4)	.34/.090

See Table 1 for expansion of abbreviations.

**IKZF1* and *IKZF1*plus are mutually exclusive categories in this table.†P values are χ^2 for binary variables and Wilcoxon-Mann-Whitney for continuous.

‡One intersex patient (genetically male but identified as female) has been excluded from all comparisons by sex.

Discussion

We screened more than two-thirds of our trial population by >1 method to detect Δ *IKZF1*. MLPA expectedly detects a larger range of lesions than the PCR approach. However, our data show that the failure rate of MLPA is considerably higher than for PCR. MLPA takes longer to carry out and needs a greater degree of skill to interpret correctly: gray areas where interpretation is unclear are not

uncommon. On the other hand, the information obtained is greater because the full spectrum of *IKZF1* deletions and copy-number alterations affecting other genes can be assessed. PCR is rapid and reliable, as well as being more sensitive than MLPA, but risks missing Δ *IKZF1* lesions that have deleted the PCR primer sites. Fifty-three Δ *IKZF1* lesions were identified by MLPA but not PCR. We believe this finding is worthy of note because it is typical for one technique to be chosen for both trial and clinical screening

Table 4. Relationship between $\Delta IKZF1$ and MRD

	<i>IKZF1</i> WT	$\Delta IKZF1$	<i>IKZF1</i> plus	<i>P</i> *	$\Delta IKZF1$ LOF	$\Delta IKZF1$ DN	<i>P</i> , LOF vs WT/ DN vs WT
PCR							
Deleted vs WT							
<i>BCR-ABL1</i> ⁺							
MRD ⁻	147 (76.6)	18 (51.4)		.002	8 (50.0)	10 (52.6)	.019/.023
MRD ⁺	45 (23.4)	17 (48.6)			8 (50.0)	9 (47.4)	
<i>BCR-ABL1</i> ⁻							
MRD ⁻	42 (60.9)	26 (55.3)		.55	10 (47.6)	16 (61.5)	.28/.95
MRD ⁺	27 (39.1)	21 (44.7)			11 (52.4)	10 (38.5)	
MLPA							
Deleted vs WT/Deleted vs <i>IKZF1</i> plus							
<i>BCR-ABL1</i> ⁺							
MRD ⁻	112 (76.2)	11 (52.4)	22 (66.7)	.021/.26	25 (64.1)	8 (57.1)	.12/.50
MRD ⁺	35 (23.8)	10 (47.6)	11 (33.3)		14 (35.9)	6 (42.9)	
<i>BCR-ABL1</i> ⁻							
MRD ⁻	27 (58.7)	15 (44.1)	22 (75.9)	.20/.13	24 (57.1)	13 (65.0)	.31/.21
MRD ⁺	19 (41.3)	19 (55.9)	7 (24.1)		18 (42.9)	7 (35.0)	

**P* values are χ^2 . *P* values for interaction (with *BCR-ABL1* status): *P* = .096 (PCR WT/ $\Delta IKZF1$), *P* = .39 (PCR, WT/LOF/DN), *P* = .0078 (MLPA WT/ $\Delta IKZF1$ /*IKZF1*⁺), and *P* = .5 (MLPA, WT/LOF/DN).

†For this analysis, negative was grouped together with indeterminate and POOR as this was how patients without a positive result were stratified to treatment.

purposes. Our data demonstrate that neither technique can be considered a “gold standard” for *IKZF1* deletion detection.

We did not detect any relationship between $\Delta IKZF1$ and survival outcomes, which is interesting and perhaps somewhat surprising. Our prior work from the UKALL12 study did not demonstrate a relationship between $\Delta IKZF1$ in multivariable analysis,³ raising the question of whether specific element(s) particular to our therapeutic approach in the United Kingdom negate the relationship.

Because we assessed a larger population of both *BCR-ABL1*⁺ and *BCR-ABL1*⁻ ALL than many prior studies, we think it unlikely that our findings stem from having insufficient power to detect an impact of $\Delta IKZF1$ on outcome, but rather that the effect sizes seen in our cohort are genuinely much smaller: in multivariable analysis for *BCR-ABL1*⁻ ALL, the EFS HR (compared with no deletion) was 1.23 for $\Delta IKZF1$ by PCR and 1.33 for *IKZF1* plus, with HRs for time to relapse of just 1.03 and 0.87, respectively.

We did note a significant relationship between $\Delta IKZF1$ and early treatment response, namely MRD at the end of induction, but in patients with *BCR-ABL1*⁻ ALL only, and this did not translate into any survival difference. This finding stands in sharp contrast to observations in childhood *BCR-ABL1*⁺ ALL where there was a highly unfavorable outcome in the presence of *IKZF1* deletions.¹³ Even the relationship we found between MRD and $\Delta IKZF1$ is distinct from that in the DCOG-ALL10 pediatric cohort,¹⁴ where *IKZF1* deletion remained predictive for inferior outcome in DCOG-ALL10 cases treated even in the medium-risk arm, indicating that the prognostic value of $\Delta IKZF1$ was independent of the early treatment response as monitored by MRD.

In an adult population, data from the GRAALL studies reported by Beldjord and colleagues¹⁵ reported an HR of 2.65 (95% confidence interval, 1.48-4.73; *P* = .001) for CIR 260 patients with *BCR-ABL1*⁻ ALL with a median age of 34 years (range, 15-59 years). Indeed, MRD and $\Delta IKZF1$ status were the only factors that impacted CIR.

As a result of our finding being at variance with one of the key studies in the field, we speculated that the lack of impact of $\Delta IKZF1$ on EFS may have stemmed from the assignment to the “high-risk” treatment stratification and resultant receipt of alloSCT; thus, it was important to note that among both PCR- and MLPA-determined *IKZF1* WT there was no significant difference in the number of patients receiving alloSCT than in the $\Delta IKZF1$ population (61% vs 70% and 60% vs 61%, respectively). The transplant rates did not differ between *IKZF1* WT and $\Delta IKZF1$ when analyzed separately by *BCR-ABL1* status. For completeness, we also ensured there were no differences between the groups in those assigned to transplant but relapsing or dying before receiving it, and we performed an analysis of time to relapse censoring for alloSCT in first complete remission. Also, as described, we did not find any impact by randomized assignment to the rituximab treatment arm. It is noteworthy that this trial had a much higher rate of alloSCT than would be typical because the role of reduced-intensity conditioned alloSCT in those over 40 years of age was one of the main trial questions.

Having found no relationship between $\Delta IKZF1$ and survival outcomes, we nonetheless expect that we may see some relationship with outcome within specific subgroups. Kobitzsch and colleagues characterized 482 cases from adults aged 16 to 65 years with *BCR-ABL*⁻ ALL who participated in GMALL studies. Those with LOF lesions had a worse outcome, suggesting a clear distinction between LOF and DN $\Delta IKZF1$.⁷ We did not find any such relationship, nor did we find a relationship between the *IKZF1* plus profile as described by Stanulla and colleagues in childhood ALL.¹⁶ Similarly, our data are distinct from the GIMEMA study by Fedullo and colleagues wherein $\Delta IKZF1$, alongside *CDKN2A/B* and/or *PAX5*, led to significantly lower disease-free survival (24.9% vs 43.3%; *P* = .026) as well as DN *IKZF1* lesions independently impacting outcome.⁸

The most obvious difference between all of the prior reports described herein and our own is the age of the patients. With a median age of 46 years and a lower age limit of 23 years, our study enrolled the largest number and proportion of older patients in

Table 5. Univariable and multivariable analysis of EFS in relation to PCR-determined *IKZF1* status

	EFS			OS		
	Events/N	HR (95% CI)	P	Events/N	HR (95% CI)	P
All patients						
WT	191/339	1.00	.64	164/339	1.00	.36
<i>ΔIKZF1</i>	54/98	0.93 (0.69, 1.26)		44/98	0.86 (0.61-1.20)	
WT	191/339	1.00		164/339	1.00	
<i>ΔIKZF1</i> DN (4-7)	32/58	0.95 (0.65- 1.38)	.88	28/58	0.95 (0.64-1.43)	.47
<i>ΔIKZF1</i> LOF	22/40	0.90 (0.58-1.40)		16/40	0.73 (0.44-1.22)	
BCR-ABL1⁻ ALL						
WT	139/251	1.00	.28	122/251	1.00	.40
<i>ΔIKZF1</i>	27/42	1.25 (0.83, 1.89)		24/42	1.20 (0.78-1.87)	
MVA: WT	117/206	1.00	.35	103/206	1.00	.39
MVA: <i>ΔIKZF1</i>	25/38	1.23 (0.80, 1.92)		24/38	1.33 (0.82-1.68)	
WT	139/251	1.00	.55	122/251	1.00	.70
<i>ΔIKZF1</i> DN (4-7)	15/24	1.21 (0.71-2.07)		13/24	1.20 (0.68-2.12)	
<i>ΔIKZF1</i> LOF	12/18	1.30 (0.72-2.35)		11/18	1.21 (0.65-2.25)	
MVA: WT	117/206	1.00	.54	103/206	1.00	.43
MVA: <i>ΔIKZF1</i> DN (4-7)	14/22	1.39 (0.79-2.45)		13/22	1.48 (0.82-2.66)	
MVA: <i>ΔIKZF1</i> LOF	11/16	1.07 (0.57-2.03)		11/16	1.18 (0.62-2.24)	
BCR-ABL1⁺ ALL						
WT	52/88	1.00	.13	42/88	1.00	.11
<i>ΔIKZF1</i> (all <i>BCR-ABL1</i> ⁺)	27/56	0.70 (0.44, 1.11)		20/56	0.65 (0.38-1.11)	
p190 breakpoint						
MVA: WT	36/53	1.00	.019	30/53	1.00	.003
MVA: <i>ΔIKZF1</i>	15/32	0.47 (0.25, 0.88)		9/32	0.30 (0.14-0.66)	
MVA: WT	36/53	1.00		30/53	1.00	
MVA: <i>ΔIKZF1</i> DN (4-7)	9/19	0.44 (0.19-1.00)	.050	8/19	0.41 (0.17-0.8)	.044
MVA: <i>ΔIKZF1</i> LOF	6/13	0.50 (0.21-1.20)	.012	1/13	0.10 (0.01-0.77)	.027
p210 breakpoint						
MVA: WT	12/27	1.00	.89	9/27	1.00	.77
MVA: <i>ΔIKZF1</i> (p210 breakpoint)	9/20	0.94 (0.39-2.27)		8/20	1.16 (0.44-3.07)	
MVA: WT	12/27	1.00		9/27	1.00	
MVA: <i>ΔIKZF1</i> DN (4-7)	6/13	1.21 (0.44-3.29)	.71	5/13	1.23 (0.40-3.76)	.72
MVA: <i>ΔIKZF1</i> LOF	3/7	0.65 (0.18-2.36)	.51	3/7	1.05 (0.28-3.96)	.95

Multivariable analyses are shown in italics. All MVA analyses include age, sex, ECOG, log WBC, and rituximab randomization. *BCR-ABL1⁻* models include genetic risk group (good, standard, or high); *BCR-ABL1⁺* models also included breakpoint (p190 or p201) and an interaction term between *IKZF1* and breakpoint (*P* values for interaction deleted/WT: EFS *P* = .22 and OS *P* = .036). The corresponding table for MLPA-determined *IKZF1* status is shown as supplemental Table 2.

CI, confidence interval; MVA, multivariate analysis.

whom the impact of *ΔIKZF1* has been reported to date, although we saw no suggestion of worse outcomes within patients aged ≤41 years. There were very few young patients in our study as patients below the age of 25 years with *BCR-ABL1⁻* ALL are recruited to the pediatric study in the United Kingdom. As such, we suggest that the hypothesis that the adverse impact of *ΔIKZF1* may be age-related should be tested in large, combined data sets that include greater numbers of young adults than our study.

In conclusion, our study, carefully conducted within a uniformly treated trial population, demonstrates clearly that *ΔIKZF1* is not necessarily a universal biomarker of poor outcome in adult ALL. We are currently contributing data to an EWALL-generated HARMONY

study that will investigate the prognostic effect of *ΔIKZF1* in at least 10 European ALL studies to determine whether difference in effect relates to age, treatment, or background genetics.

Acknowledgments

The authors thank UK National Health Service trial sites and patients for samples.

This work was supported by Cancer Research UK (CRUK) grant C27995/A9609 for UKALL14 (A.K.F.), a Blood Cancer UK Gordon Piller Studentship (R.J.M.), and CRUK program grant C27995/A21019 (A.K.F. and A.V.M.). UKALL14 was coordinated by the CRUK and University College London Cancer Trials

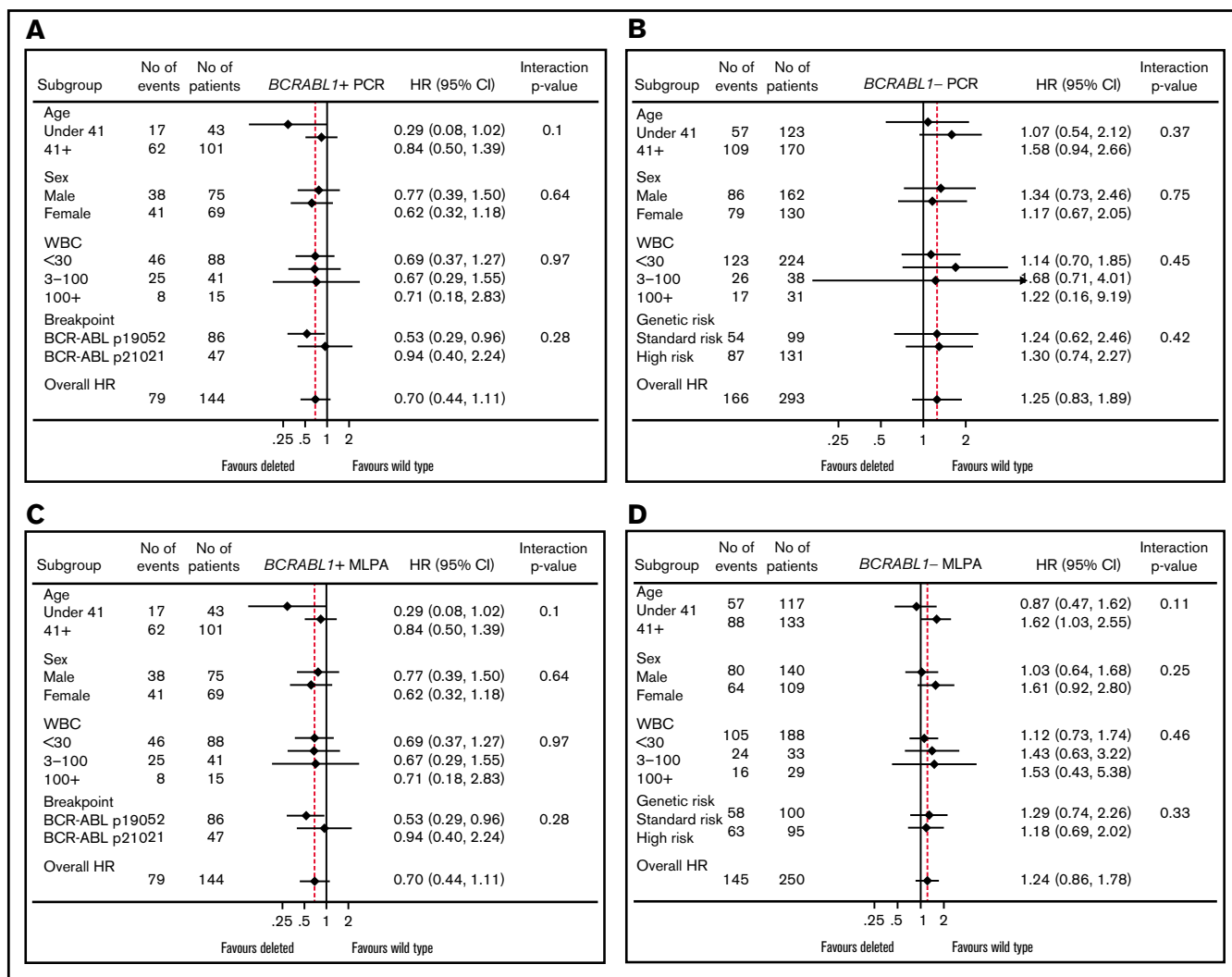


Figure 3. Forest plots. Shown is the relationship between major variables and *BCR-ABL1*⁺ ALL PCR-determined *IKZF1* status (A), *BCR-ABL1*⁻ ALL PCR-determined *IKZF1* status (B), *BCR-ABL1*⁺ ALL MLPA-determined *IKZF1* status (C), and *BCR-ABL1*⁻ ALL MLPA-determined *IKZF1* status (D).

Centre, and supported by the Comprehensive Local Research Network (CLRN).

Authorship

Contribution: R.J.M., E.B., and N.Z. performed *IKZF1* analyses by PCR and MLPA; R.J.M. performed additional experiments; S.L. and K.Z.A. performed MRD analyses; L.C.-H., E.L., and P.P. coordinated the UKALL14 trial and gathered and helped to interpret data; A.A.K. performed statistical analyses; D.I.M., C.J.R., T.F.M., A.K.M., and B.P. managed the trial and performed clinical interpretation of the data; E.P., D.L., and B.P. designed and interpreted laboratory studies; R.J.M., A.K.F., and A.V.M. wrote the paper; A.K.F. and A.V.M. con-

ceived and designed the study and obtained funding; and all authors contributed to manuscript writing and approved the final version.

Conflict-of-interest disclosure: The authors declare no competing financial interests.

ORCID profiles: A.K.F., 0000-0002-4746-7789; A.K.M., 0000-0002-8737-8465.

Correspondence: Adele K. Fielding, UCL Cancer Institute, University College London, 72 Huntley St, London, WC1E 6DD United Kingdom; e-mail: a.fielding@ucl.ac.uk.

References

1. Mullighan CG, Miller CB, Radtke I, et al. BCR-ABL1 lymphoblastic leukaemia is characterized by the deletion of Ikaros. *Nature*. 2008;453(7191):110-114.
2. Mullighan CG, Su X, Zhang J, et al. Children's Oncology Group. Deletion of IKZF1 and prognosis in acute lymphoblastic leukemia. *N Engl J Med*. 2009;360(5):470-480.
3. Moorman AV, Schwab C, Ensor HM, et al. IGH@ translocations, CRLF2 deregulation, and microdeletions in adolescents and adults with acute lymphoblastic leukemia. *J Clin Oncol*. 2012;30(25):3100-3108.
4. Sun L, Crotty ML, Sensel M, et al. Expression of dominant-negative Ikaros isoforms in T-cell acute lymphoblastic leukemia. *Clin Cancer Res*. 1999;5(8):2112-2120.
5. Sun L, Goodman PA, Wood CM, et al. Expression of aberrantly spliced oncogenic ikaros isoforms in childhood acute lymphoblastic leukemia. *J Clin Oncol*. 1999;17(12):3753-3766.
6. Sun L, Heerema N, Crotty L, et al. Expression of dominant-negative and mutant isoforms of the antileukemic transcription factor Ikaros in infant acute lymphoblastic leukemia. *Proc Natl Acad Sci USA*. 1999;96(2):680-685.
7. Kobitzsch B, Gökuşbuğ N, Schwartz S, et al. Loss-of-function but not dominant-negative intragenic IKZF1 deletions are associated with an adverse prognosis in adult BCR-ABL-negative acute lymphoblastic leukemia. *Haematologica*. 2017;102(10):1739-1747.
8. Fedullo AL, Messina M, Elia L, et al. Prognostic implications of additional genomic lesions in adult Philadelphia chromosome-positive acute lymphoblastic leukemia. *Haematologica*. 2019;104(2):312-318.
9. Schwab CJ, Jones LR, Morrison H, et al. Evaluation of multiplex ligation-dependent probe amplification as a method for the detection of copy number abnormalities in B-cell precursor acute lymphoblastic leukemia. *Genes Chromosomes Cancer*. 2010;49(12):1104-1113.
10. Caye A, Beldjord K, Mass-Malo K, et al. Breakpoint-specific multiplex polymerase chain reaction allows the detection of IKZF1 intragenic deletions and minimal residual disease monitoring in B-cell precursor acute lymphoblastic leukemia. *Haematologica*. 2013;98(4):597-601.
11. Brüggemann M, Schrauder A, Raff T, et al. Standardized MRD quantification in European ALL trials: proceedings of the Second International Symposium on MRD assessment in Kiel, Germany, 18-20 September 2008. *Leukemia*. 2010;24(3):521-535.
12. Patel B, Kirkwood AA, Dey A, et al. Pegylated-asparaginase during induction therapy for adult acute lymphoblastic leukaemia: toxicity data from the UKALL14 trial. *Leukemia*. 2017;31(1):58-64.
13. van der Veer A, Zaliava M, Mottadelli F, et al. IKZF1 status as a prognostic feature in BCR-ABL1-positive childhood ALL. *Blood*. 2014;123(11):1691-1698.
14. Steeghs EMP, Boer JM, Hoogkamer AQ, et al. Copy number alterations in B-cell development genes, drug resistance, and clinical outcome in pediatric B-cell precursor acute lymphoblastic leukemia. *Sci Rep*. 2019;9(1):4634.
15. Beldjord K, Chevret S, Asnafi V, et al. Group for Research on Adult Acute Lymphoblastic Leukemia (GRAALL). Oncogenetics and minimal residual disease are independent outcome predictors in adult patients with acute lymphoblastic leukemia. *Blood*. 2014;123(24):3739-3749.
16. Stanulla M, Dagdan E, Zaliava M, et al. International BFM Study Group. IKZF1plus defines a new minimal residual disease-dependent very-poor prognostic profile in pediatric B-cell precursor acute lymphoblastic leukemia. *J Clin Oncol*. 2018;36(12):1240-1249.