

Disparity in Peripheral and Renal B-cell Depletion with Rituximab in Systemic Lupus Erythematosus: an Opportunity for Obinutuzumab?

Venkat R Reddy^{*1,2}, Ruth J Pepper^{1,4}, Kavina Shah^{1,2}, Geraldine Cambridge², Scott R Henderson⁴, Christian Klein³, Loren Kell², Samuel J Taylor², David A Isenberg^{1,2}, Mark S Cragg⁵ and Maria J Leandro^{1,2}

Author affiliations

¹, Rheumatology, University College Hospital, London, UK

², Rheumatology, University College London, London, UK

³, Roche Glycart, Basel, Switzerland

⁴, Nephrology, Royal Free Hospital, London, UK

⁵. Centre for Cancer Immunology, Faculty of Medicine, University of Southampton, Southampton, UK

^{*}, corresponding author; correspondence to v.reddy@ucl.ac.uk

ORCID ID: <https://orcid.org/0000-0002-3757-4425>

Room 415, Fourth Floor, Rayne Institute, 5 University St, London, U.K. WC1E 6JF

Abstract

Objectives

To investigate key factors that may contribute to the variability of rituximab-mediated peripheral and renal B-cell depletion (BCD) in Systemic Lupus Erythematosus (SLE).

Methods

We analysed: 1) CD19+ B cell counts in patients with SLE before and one, two, three and six months after treatment with rituximab, comparing them with Rheumatoid Arthritis (RA) patients; 2) the presence of B cells in renal biopsies after rituximab therapy; 3) whether the duration of BCD correlated with patient demographics and B-cell expression of CD20 and Fc γ R11b; and 4) the effect of BAFF on the efficiency of rituximab and obinutuzumab at inducing BCD in whole blood assays, *in vitro*.

Results

In SLE (n=71), the duration of BCD was shorter compared to RA (n=27). B cells were detectable in renal biopsy samples (n=6) after treatment with rituximab in all patients with poor response whilst peripheral blood B cells remained low or undetectable in the same patients. There were no significant relationships between peripheral BCD and patient age, disease duration, serum C3 levels or the level of expression of B-cell surface proteins CD20 and Fc γ R11b. Obinutuzumab was more efficient than rituximab at inducing BCD in whole blood assays, regardless of excess BAFF.

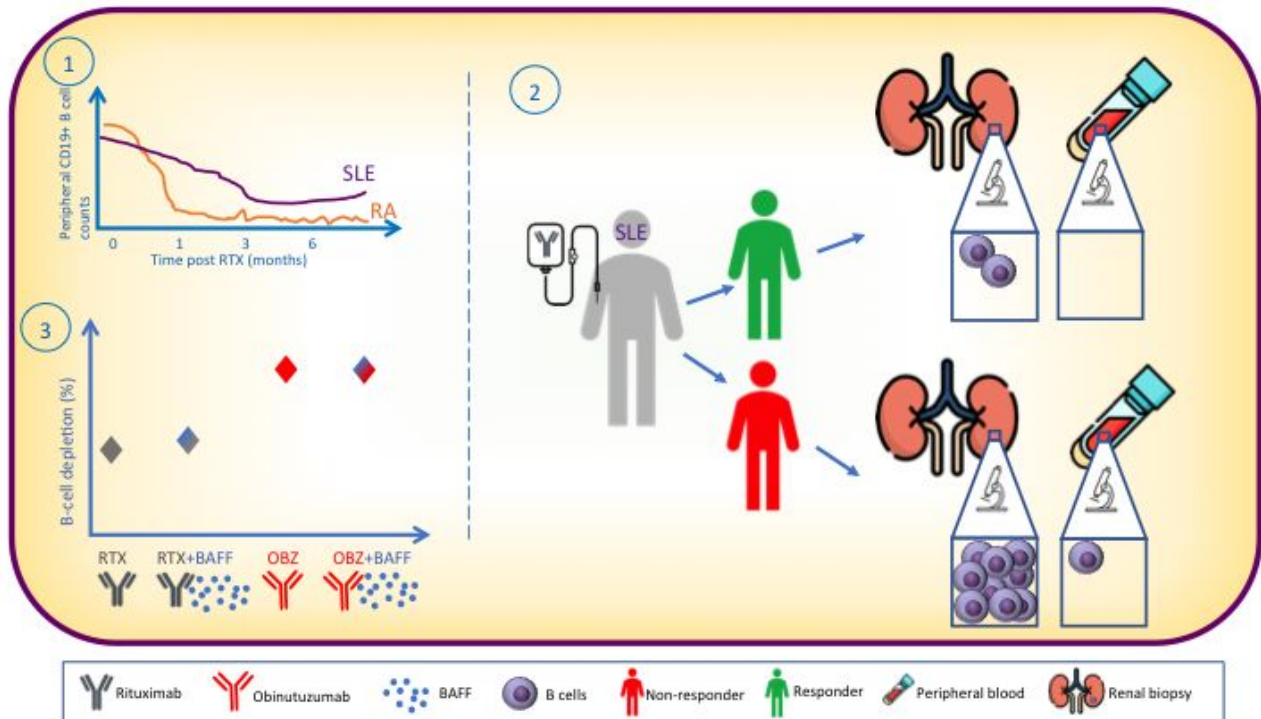
Conclusions

BCD in SLE is less efficient than in RA. Renal B-cell presence following rituximab treatment was associated with poor outcomes. No significant relationships between any measured B-cell related, clinical or laboratory parameters and the efficiency of BCD by rituximab was found. Obinutuzumab was superior to rituximab at inducing BCD.

Key words

B-cell depletion, rituximab, systemic lupus erythematosus, lupus nephritis and Obinutuzumab

Graphical Abstract



KEY MESSAGES

- 1) BCD in SLE is less efficient than RA regardless of clinical and laboratory parameters
- 2) Disparity in peripheral and renal B-cell depletion is notable in rituximab refractory lupus nephritis
- 3) Obinutuzumab was superior to rituximab at inducing BCD, in vitro, regardless of BAFF

INTRODUCTION

In patients with Systemic Lupus Erythematosus (SLE), incomplete peripheral blood B-cell depletion (BCD) contributes to poor response to therapy using the anti-CD20 monoclonal antibody (mAb), rituximab [1, 2]. The presence of renal interstitial B cells in patients with Lupus nephritis (LN), is associated with renal dysfunction and histologically active lesions [3]. Rituximab treatment for refractory LN results in variable peripheral BCD [4] and the LUNAR study found that complete peripheral BCD (0 cells / μ l) lasting > 71 days was associated with complete response [4, 5]. In a study of seven patients with LN who responded well to rituximab, BCD in the kidneys was reported in all patients on repeat renal biopsy at 3–12 months after rituximab [6]. Therefore, improving BCD may enhance clinical response [7, 8]. However, we do not know whether peripheral blood BCD reflects BCD in the kidney and if incomplete BCD in the kidney fails to disrupt inflammatory lesions contributing to poor response.

Peripheral and Renal B-cell depletion in SLE

1
2 Anti-CD20 mAbs can employ multiple effector mechanisms including complement-dependent cell
3 cytotoxicity (CDC), antibody-dependent cellular cytotoxicity (ADCC), antibody-dependent cell
4 phagocytosis (ADCP) and direct cell death (DCD) [9]. There are two main types of anti-CD20
5 mAbs: Type I anti-CD20 mAbs cluster the target B-cell antigen, CD20, and recruit the inhibitory
6 Fc γ R11b, CD32b, leading to their internalisation to a significantly greater extent than Type II anti-
7 CD20 mAbs such as Obinutuzumab [10-12]. Clustering of anti-CD20 mAbs facilitates efficient CDC
8 whereas internalisation impairs other Fc-mediated effector functions such as ADCC [10] and
9 ADCP.
10
11
12
13
14

15
16 In SLE, both inherent and acquired defects in effector mechanisms compromise the efficiency of
17 anti-CD20 mAbs. We have previously shown that B-cell intrinsic mechanisms such as B cell
18 internalisation of rituximab [13] and B-cell extrinsic factors such as rituximab pharmacokinetics [14]
19 influence its efficiency. SLE-related defects in complement system [15], phagocytosis [16] and
20 elevated serum BAFF (B-cell activation factor) levels [17] may also limit the efficiency of rituximab
21 in SLE [17-20]. BAFF antagonises deletion of self-reactive B cells in transgenic mice [21], and
22 promotes anti-apoptotic protein expression on B cells, which may compromise rituximab-induced
23 apoptotic DCD [10]. In Sjogren's syndrome, BAFF was reported to modulate repopulation of B cells
24 in patients treated with rituximab [22]. However, there are no current data comparing the duration
25 of BCD in SLE with other autoimmune diseases without such disease-related defects in the
26 complement system or phagocytosis such as rheumatoid arthritis (RA), where the efficacy is more
27 predictable [23]. Further, we do not know if peripheral blood BCD reflects BCD in the kidney and
28 data about the relationship between renal BCD and clinical response to rituximab is limited.
29 Therefore, it is important to understand whether host and/or disease related factors influence the
30 efficiency of anti-CD20 mAb-mediated BCD in SLE.
31
32
33
34
35
36
37
38
39
40

41 In SLE, host-specific factors such as Fc γ R11a polymorphisms are reported to influence the
42 efficiency of rituximab [19], but the effect of patient demographics is not known. Given SLE- related
43 complement defects [18], it is also important to probe the relationship between serum C3 levels
44 and the efficiency of BCD. Further, the relationship between B-cell intrinsic factors such as
45 expression of the target antigen, CD20, and Fc γ R11b (CD32b) that mediates internalisation of
46 rituximab and extrinsic factors such as the effect of excess BAFF on the efficiency of anti-CD20
47 mAbs is not known.
48
49
50
51
52
53

54 Following on from our previous studies [10, 13, 14], here we compared the duration of BCD in
55 patients with SLE and RA; analysed BCD in the kidney samples from patients with refractory LN
56 with poor response to rituximab; and explored the relationship between possible factors influencing
57 the efficiency of rituximab, in vivo and in vitro. A recent phase II study reported good clinical
58 efficacy of obinutuzumab in proliferative LN [24]. Therefore, we investigated whether
59
60

Peripheral and Renal B-cell depletion in SLE

1
2 obinutuzumab, given its superiority in inducing BCD in vitro [10], was capable of delivering superior
3 BCD in the presence of excess BAFF.
4
5
6

7 PATIENTS AND METHODS

8 Patients

9
10
11
12
13 This is a retrospective study. All patients participating in this study fulfilled the American College of
14 Rheumatology (ACR) (ACR / SLICC) classification criteria for SLE or (ACR / EULAR) diagnostic
15 criteria for RA, respectively. All study participants provided written informed consent according to
16 the Declaration of Helsinki and in the remit of the London-Bentham Research Ethics Committee
17 approval of the study. All patients were treated with rituximab (1 g x 2, given two weeks apart) at
18 University College Hospital (UCH), London, UK. Patient demographics, clinical and laboratory
19 parameters of the cohort have been previously described [10, 13, 25]. Rituximab was a gift from
20 the pharmacy of UCH. Roche Innovation Center Zurich, Switzerland provided obinutuzumab [26,
21 27].
22
23
24
25
26
27
28
29

30 Flow cytometry

31
32 Fluorochrome-conjugated mAbs anti-CD3 (phycoerythrin (PE)-Cy7), anti-CD19 (Alexa Fluor 700),
33 anti-CD45 (PE), anti-CD20 (FITC) and anti-CD32 (PE) were obtained from BD Biosciences
34 (Oxford, UK) and Biolegend, London, UK. In addition to forward- and side-scatter characteristics, B
35 cells were identified as CD19+ and T cells as CD3+, by flow cytometry using a Becton Dickinson
36 LSR Fortessa cell analyser (Supplementary Figures 1 and 2, available at *Rheumatology* online).
37 Peripheral blood mononuclear cells were separated from whole blood by Ficoll-Hypaque density
38 gradient and B cells were isolated using EasySep Human B Cell Enrichment Kit (Stemcell
39 Technologies, Cambridge, UK).
40
41
42
43
44
45
46
47

48 Whole blood B-cell depletion assays

49
50 Whole blood BCD assays were performed as described previously [10]. Briefly, freshly drawn,
51 heparinized whole blood (100 μ l) was incubated with or without mAbs at 1 μ g/ml for 24 h at 37°C
52 and 5% CO₂ and subsequently analysed by flow cytometry. Samples were incubated with BAFF at
53 100 ng/ml for some experiments. The cytotoxicity index (CTI) of mAbs was calculated from the
54 proportion of B cells to T cells on flow cytometry, as described previously [13].
55
56
57
58
59
60

Immunohistochemistry on renal biopsies

Renal biopsy was performed in six patients with suspected active LN despite previous or ongoing treatment with immunosuppression and following treatment with RTX (2 x 1g, two weeks apart). All patients had a renal biopsy between 5 months and 11 years after rituximab treatment.

Immunohistochemistry was performed on formalin-fixed paraffin-embedded sections using standard techniques to stain for B cells using 2 different antibodies: anti-PAX-5 (Becton Dickinson) and anti-CD79 (Dako) at a dilution of 1:200 and incubated for 1 hour at room temperature. Antigen retrieval was performed using citrate buffer. Following the addition of a secondary antibody and a washing step, Avidin-Biotin Complex (ABC) solution was added. After a further washing step, the slides were developed using 3,3-diaminobenzidine.

Statistical analysis

Statistical analysis was performed using Graphpad Prism software (version 5). Mann-Whitney U test or paired 't' tests were used to compare unpaired or paired samples, respectively. Spearman rank sum test (r^2) was used to analyse relationships between variables and $r^2 > 0.45$ and $p < 0.05$ were considered significant.

RESULTS

Duration of BCD in RA and SLE

The duration of BCD was assessed in 27 patients with RA and 71 patients with SLE. Before treatment with rituximab, patients with RA had significantly higher number of CD19+ cells (median and range; $0.2260 \times 10^9/L$, 0.012-0.663) in peripheral circulation, compared with patients with SLE (median and range; $0.097 \times 10^9/L$, 0.01-1.274) (Figure 1A) (Mann-Whitney U test). In contrast, at both 3 and 6 months after treatment with rituximab, the number of CD19+ cells was significantly lower in patients with RA compared to patients with SLE. No significant differences were noted at 1 month after rituximab although some patients with SLE had CD19+ cell counts $> 0.5 \times 10^9/L$. These results showed that after rituximab treatment the duration of BCD was shorter in patients with SLE compared to patients with RA.

BCD in the kidney

A repeat renal biopsy was performed in patients with suspected active LN for the following indications: decline in renal function in four patients (with nephrotic range proteinuria in three patients) and nephrotic syndrome with preserved renal function in the remaining two patients.

Peripheral and Renal B-cell depletion in SLE

Renal biopsy was performed at a median of 12 weeks (range 2-15 weeks time from second or only dose of rituximab).

At the time of the renal biopsy following rituximab, the median creatinine was 375 $\mu\text{mol/L}$ (range 54-764), median urine protein creatinine ratio was 632 mg/mmol (range 85-969) and median albumin was 26 g/L (range 18-32). Table 1 demonstrates the individual results and class of LN on both renal biopsies as well as treatment details.

During this episode of active disease at the time of the biopsy, three patients had elevated anti-dsDNA antibody levels of 1766, 76 and 124 IU/mL, and three other patients had normal levels (10, 15 and 19 IU/mL). Of these patients with normal anti-dsDNA antibody levels, two had higher levels prior to treatment with rituximab. Five patients had low serum C3 levels (< 0.9 gm/litre).

Patients 2 and 4 had minimal staining with anti-CD79. The remaining four patients had detectable B cells demonstrated by anti-CD79 staining, Figure 1B-G. Immunohistochemistry with anti-Pax-5 showed similar staining patterns to that with anti-CD79 in 4 patients, Figure 1C. Two patients without detectable renal B cells on both staining patterns had Class V and Class VI LN; therefore, staining was only present in proliferative glomerular lesions.

Peripheral B cells in patients with LN

Complete BCD was defined as $\leq 0.005 \times 10^9/\text{L}$. Patient 2 with a Class V lesion and normal renal function at follow-up had no detectable B-cell infiltration, despite a CD19 count of $0.03 \times 10^9/\text{L}$ at the time of renal biopsy. This patient had briefly reached a nadir CD19 count of 0.006 but reconstituted rapidly without detectable renal B-cell infiltration. In this cohort of patients, patient 2 is the only patient with normal renal function at long-term follow-up. Patient 1 also with a Class V lesion and a CD19 count of $0.042 \times 10^9/\text{L}$ demonstrated renal B-cell infiltration. Patients 3, 5 and 6 had significantly suppressed CD19 count (≤ 0.002) with all three patients having detectable anti-CD79 staining in renal biopsy samples. Patients 1, 3, 5 and 6 either progressed rapidly to end-stage renal failure or advanced CKD. Table 2 demonstrates the correlation between renal biopsy B cells and peripheral B cells and their clinical outcomes. Patients with lower levels of renal B cells, irrespective of the peripheral B cell count, had better clinical outcomes.

B-cell expression of CD20 and Fc γ RIIb in RA and SLE

Expression of CD20 and the inhibitory Fc γ RIIb on malignant B cells influences clinical response to rituximab in lymphoma [12, 28, 29]. Therefore, their expression on B cells from patients with RA (n=44) and SLE (n=81) were compared.

1
2
3
4 The median (inter-quartile range, IQR) frequency of CD20+ B cells was significantly greater in
5 patients with RA compared to those with SLE, with 9.6% (7.3 – 12.1%) and 6% (3.9 – 10.8%),
6 respectively (Figure 2A). In contrast, B-cell expression of CD20 (mean fluorescence intensity, MFI)
7 was significantly lower in patients with RA compared to those with SLE with median (IQR) 2292
8 (1787 – 3654) and 6261 (2334 – 13446), respectively, Figure 2B. However, the MFI of CD20
9 varied remarkably, particularly in patients with SLE.
10
11
12
13

14 B-cell expression of Fc γ RIIb (CD32) (MFI) was also significantly lower in patients with RA
15 compared to those with SLE, with median (IQR) 280 (181 – 555) and 2414 (1378 – 5707),
16 respectively. The MFI of Fc γ RIIb varied remarkably between patients with RA and SLE, Figure 2C.
17 Further, there was no difference in the relative B-cell expression of CD20 and Fc γ RIIb (ratio MFI of
18 CD20: MFI of Fc γ RIIb) between patients with RA and SLE, Figure 2D.
19
20
21
22
23

24 Thus, these results found no significant relationship between the relative expression of CD20 and
25 Fc γ RIIb between patients with RA and SLE.
26
27
28

29 **Relationships between the efficiency of Type I anti-CD20 mAb and patient demographics**

30
31 To assess the effects of patient characteristics on the efficiency of anti-CD20 mAbs, whole blood
32 BCD assays were performed. There were no significant relationships between the percentages of
33 BCD achieved by rituximab in the whole blood BCD assay in samples from patients with SLE and
34 age (years) of patients with RA or SLE with r^2 , Spearman's correlation coefficient, values of 0.07 (p
35 > 0.1) and 0.01 ($p > 0.4$), respectively, or disease duration of patients with RA or SLE with r^2 ,
36 Spearman's correlation coefficient, values of 0.01 ($p > 0.5$) and 0.02 ($p > 0.2$) or serum C3 levels
37 with spearman r^2 of -0.17 ($p = 0.37$), respectively, Figure 3 A-E.
38
39
40
41
42
43
44

45 **BCD in vitro with type I and II anti-CD20 mAbs: relationship with B-cell expression of CD20 46 and Fc γ RIIb**

47
48 CD20 expression on B cells varied remarkably between patients with SLE with a mean \pm SD of
49 11555 \pm 4354. However, there were no significant relationships between B-cell expression of CD20
50 and the CTI of rituximab or obinutuzumab in the whole blood assay in samples from patients with
51 SLE, with r^2 , Spearman's correlation coefficient, values of -0.11 ($p = 0.63$) and 0.19 ($p = 0.42$),
52 respectively, Figure 4A.
53
54
55
56
57
58
59
60

Peripheral and Renal B-cell depletion in SLE

1
2
3
4 Expression of Fc γ RIIb was less variable than that of CD20 with a mean \pm SD of 5008 \pm 1687. No
5 significant correlations were found between the expression of CD20, Fc γ RIIb or their relative
6 expression (ratio of MFI of CD20/ Fc γ RIIb) to the CTI of rituximab or obinutuzumab in patients with
7 SLE with r^2 , Spearman's correlation coefficient, values of -0.31 ($p = 0.19$) and 0.25 ($p = 0.29$),
8 respectively, Figure 4 A-C.
9
10
11
12
13

14 **BCD in vitro with type I and II anti-CD20 mAbs: relationship with the composition of B-cell** 15 **subpopulations**

16
17
18 B-cell subpopulations may differ in their susceptibility to deletion by mAbs [30]. Therefore, the
19 distribution of B-cell subpopulations in samples from nine patients with SLE incubated with anti-
20 CD20 mAbs for 24 hours in the whole blood BCD assay was analysed. There were no differences
21 between B-cell subpopulations in samples incubated with the two mAbs except for the frequency of
22 double (CD19+IgD-CD27-) negative cells, which was higher in samples incubated with rituximab
23 compared to samples incubated without mAbs and those incubated with obinutuzumab (Figure
24 4D). The CTI of obinutuzumab was significantly greater than the CTI of rituximab in both RA ($n =$
25 10) and SLE ($n = 9$), Figure 4E. However, there were no significant differences in the frequencies
26 of B-cell subpopulations between the cohort of patients with RA and SLE (Figure 4E). Collectively,
27 these results suggest that obinutuzumab was more efficient at BCD than rituximab regardless of
28 the composition of B-cell subpopulations.
29
30
31
32
33
34
35
36
37

38 **Efficiency of type I and II anti-CD20 mAbs and the effect of excess BAFF**

39
40 Patients with SLE may have high BAFF levels detectable in the serum [31]. Therefore, the effect of
41 BAFF on the efficiency of anti-CD20 mAbs at inducing BCD was assessed by comparing the CTI of
42 anti-CD20 mAbs in samples incubated in the presence or absence of BAFF at 100 ng/mL in the
43 whole blood assay using freshly drawn blood samples from patients with RA ($n = 3$) and SLE ($n =$
44 4).
45
46
47
48
49

50 There were no consistent effects of excess BAFF on the efficiency of mAbs in the whole blood
51 BCD assay in samples from patients with SLE ($n = 7$, Figure 4F). There were no significant
52 differences between the CTI of rituximab or obinutuzumab in the absence or presence of excess
53 BAFF in the whole blood assay, $p = 0.1875$ and $p > 0.05$, respectively. The median (range) CTI of
54 rituximab in the absence of excess BAFF was 18 (1 - 29) and in the presence of excess BAFF the
55 median (range) CTI was 34 (14 - 63). The median (range) CTI of obinutuzumab in the absence of
56 excess BAFF was 45 (26 - 52) and in the presence of excess BAFF the median (range) CTI was
57
58
59
60

50 (12 - 75). However, even in this small number of samples the CTI of obinutuzumab was significantly greater than rituximab regardless of excess BAFF, $p < 0.05$.

DISCUSSION

Here, we found that BCD in SLE was of shorter duration than in RA. We report a disparity between peripheral blood BCD and renal BCD in individual patients with LN. Although this study did not find any significant relationships between the possible contributing factors investigated and BCD, obinutuzumab was superior to rituximab at inducing BCD, in vitro, regardless of excess BAFF.

Despite treatment with the same dose of rituximab, the duration of BCD was remarkably variable between individual patients with RA and SLE, as reported previously [1-3, 32-34]. Before treatment with rituximab, patients with RA had higher CD19+ B cell counts compared to patients with SLE. However, the observations that CD19+ B cells were detectable in peripheral circulation at an earlier time point after treatment with rituximab in patients with SLE compared to RA suggests that BCD was less pronounced and/or that repopulation of distinct B-cell subpopulations occurred sooner in patients with SLE compared to those with RA and/or that CD19+CD20- plasma blasts and plasma cells, which may, at least in part, explain the disparity in clinical response reported in clinical trials involving patients with RA and SLE.

Despite disappointing trial evidence [4], rituximab is used especially in those patients refractory to standard treatment [35]. In LN recruitment of macrophages, T cells and B cells into the interstitium contributes to inflammation [36] and in Class IV LN with both activity and chronicity correlate with B-cell infiltration in the interstitium rather than in the glomerulus [37]. Our data indicates a clinically relevant discrepancy in BCD between peripheral blood and the kidney in patients with LN with the persistence of interstitial B cells (as demonstrated by CD79 and Pax-5 positive cells), which was associated with progressive CKD and end-stage renal failure in four patients whereas the patient with preserved renal function had no detectable B cells in the kidney. The only patient without any detectable B cells by either marker (CD79 or Pax-5) had a Class V lesion and at long term follow-up has normal kidney function and remains in remission. Despite undetectable peripheral CD19+ B cells, the persistence of B cells following rituximab was associated with risk of progressive CKD and end-stage renal failure. Taken together with the observations that rituximab treatment leads to resorption of immune deposits in responding patients with LN [38], our findings suggest that improving BCD in the kidney may enhance clinical response to BCD therapy in LN.

We have previously reported that BCD in SLE is less efficient regardless of serum rituximab levels [14], which suggested that alternative resistance mechanisms operate to reduce the efficiency of rituximab. Although, the study was not primarily designed to evaluate the effect of each parameter,

Peripheral and Renal B-cell depletion in SLE

1 we found no significant correlation between the CTI of rituximab and/or obinutuzumab and patient's
2 age, duration of disease, or serum C3 levels. In contrast to some B-cell malignancies, B-cell
3 expression of Fc γ R1Ib and/or CD20 did not correlate with the in vitro efficiency of mAbs in both RA
4 and SLE, with respect to the target cell expression of Fc γ R1Ib [28, 39] and CD20 [40, 41]. Thus,
5 although B-cell expression of CD20 and/or Fc γ R1Ib was variable between individuals and also in B-
6 cell subpopulations, the findings described here suggest that the thresholds of B-cell expression of
7 CD20 and Fc γ R1Ib and/or baseline composition of B-cell subpopulations do not seem to influence
8 the efficiency of anti-CD20 mAbs in inducing BCD, in vitro, in RA and SLE patient samples.
9

10 There were no remarkable differences in susceptibility of B-cell subpopulations to anti-CD20 mAbs
11 in whole blood BCD assays. Allowing for the limitation that alterations in one B-cell compartment
12 would alter the frequency of other B-cell subpopulations, the results suggest that IgD-CD27-B cells
13 might resist depletion with rituximab, but not obinutuzumab in in vitro whole blood BCD assays.
14 BAFF inhibits apoptosis in B cells by up-regulating the anti-apoptotic factors Bcl-2 and Bcl-XL [42].
15 Therefore, BAFF may antagonise rituximab-mediated apoptotic cell death whereas BAFF may
16 have limited effect on obinutuzumab-induced lysosome-mediated direct cell death [10, 18]. Whilst
17 the results of trials investigating the efficacy of combination therapy with rituximab and Belimumab
18 are awaited, a recent mechanistic study of the combination therapy in 15 patients followed up for
19 two years, reported poor BCD was more common in non-responders than responders [43].
20 Further, patients who do not respond to rituximab due to incomplete depletion may benefit from
21 treatment with an alternative anti-CD20 agent than Belimumab [8]. Here, we found no consistent
22 effects of BAFF on the efficiency of mAb-mediated BCD in this small number of samples. However,
23 the efficiency of mAbs was not reduced in the presence of excess BAFF whereas obinutuzumab
24 induced superior BCD to rituximab regardless of additional BAFF in whole blood assays.
25

26 The main limitations of this study include that experiments to investigate the mechanisms behind
27 the variability in BCD as well as comparing the efficiency of type I and II anti-CD20 mAbs were
28 carried out in vitro. In contrast to RCTs of rituximab in LN [4, 44], which failed to demonstrate
29 superiority over standard of care, a phase II study demonstrated efficient peripheral BCD and renal
30 responses with obinutuzumab, compared to placebo when added to MMF and steroids [24]. Our
31 data corresponds with this in that obinutuzumab was more efficient than rituximab at inducing BCD
32 in whole blood assays.
33

34 Thus, the main conclusions are: a) B-cell depletion in SLE is less efficient than RA; b) renal B-cell
35 infiltration following rituximab treatment is associated with poor outcomes; c) no significant
36 relationships between the measured B-cell intrinsic and extrinsic factors and the efficiency of BCD
37 by rituximab; and d) obinutuzumab was superior to rituximab at inducing BCD, in vitro, regardless
38 of excess BAFF.
39
40
41
42
43
44
45
46
47
48
49
50
51
52
53
54
55
56
57
58
59
60

1
2
3 Taken together, this study highlights the potential of obinutuzumab, a commercially available,
4 mechanistically different Type II anti-CD20 mAb with an afucosylated Fc portion not disposed to
5 internalisation (unlike rituximab), as an alternative B-cell depleting agent in RA and SLE.
6
7
8
9

10 **ACKNOWLEDGEMENTS**

11 V.R. was funded by an Arthritis Research UK Fellowship (20488), MRC-CARP award and
12 supported by Doris Hillier Grant (2013 and 2017) and a research grant from Roche Glycart, Basel.

13 V.R., L.K., D.A.I., and M.J.L. acknowledge the support of the BRC award to University College
14 London and University College Hospital.

15 The authors would like to thank Pauline Buck, Eve McLoughlin, Nichola Whitbread and Samantha
16 Moore for their help with recruiting and obtaining samples from patients for this study.

17 Obinutuzumab was provided by Hoffmann La Roche.
18
19
20
21
22
23
24

25 **FUNDING STATEMENTS**

26 The study was part funded by Versus Arthritis grant (20488), Doris Hillier Grant 2017 and Roche
27 Glycart.
28
29
30
31
32

33 **CONFLICTS OF INTEREST**

34 V.R. has received a research grant from Roche. C.K. is an employee of and shareholder of Roche.
35 M.S.C. is a retained consultant for BioInvent International and has performed educational and
36 advisory roles for Baxalta and Boehringer Ingelheim. He has received research funding from
37 Roche, Gilead, iteos, Bioinvent International, UCB and GSK. M.J.L. acted as a consultant for
38 Roche and Genentech and received funds less than \$10 000 and support to attend educational
39 conferences.
40
41
42
43
44
45

46 **DATA AVAILABILITY STATEMENT**

47 The data is available from the corresponding author.
48
49
50
51
52

53 **REFERENCES**

- 54
55
56
57 [1] Vital EM, Dass S, Buch MH, Henshaw K, Pease CT, Martin MF *et al.* B cell biomarkers of
58 rituximab responses in systemic lupus erythematosus. *Arthritis Rheum*, 2011;63:3038-47.
59 [2] Albert D, Dunham J, Khan S, Stansberry J, Kolasinski S, Tsai D *et al.* Variability in the
60 biological response to anti-CD20 B cell depletion in systemic lupus erythaematosus. *Ann
Rheum Dis*, 2008;67:1724-31.

Peripheral and Renal B-cell depletion in SLE

- [3] Looney RJ, Anolik JH, Campbell D, Felgar RE, Young F, Arend LJ *et al.* B cell depletion as a novel treatment for systemic lupus erythematosus: a phase I/II dose-escalation trial of rituximab. *Arthritis Rheum*, 2004;50:2580-9.
- [4] Rovin BH, Furie R, Latinis K, Looney RJ, Fervenza FC, Sanchez-Guerrero J *et al.* Efficacy and safety of rituximab in patients with active proliferative lupus nephritis: the Lupus Nephritis Assessment with Rituximab study. *Arthritis Rheum*, 2012;64:1215-26.
- [5] Gomez Mendez LM, Cascino MD, Garg J, Katsumoto TR, Brakeman P, Dall'Era M *et al.* Peripheral Blood B Cell Depletion after Rituximab and Complete Response in Lupus Nephritis. *Clin J Am Soc Nephrol*, 2018;13:1502-9.
- [6] Gunnarsson I, Sundelin B, Jonsdottir T, Jacobson SH, Henriksson EW, van Vollenhoven RF. Histopathologic and clinical outcome of rituximab treatment in patients with cyclophosphamide-resistant proliferative lupus nephritis. *Arthritis Rheum*, 2007;56:1263-72.
- [7] Md Yusof MY, Shaw D, El-Sherbiny YM, Dunn E, Rawstron AC, Emery P *et al.* Predicting and managing primary and secondary non-response to rituximab using B-cell biomarkers in systemic lupus erythematosus. *Annals of the Rheumatic Diseases*, 2017;76:1829-36.
- [8] Hassan SU, Md Yusof MY, Emery P, Dass S, Vital EM. Biologic Sequencing in Systemic Lupus Erythematosus: After Secondary Non-response to Rituximab, Switching to Humanised Anti-CD20 Agent Is More Effective Than Belimumab. *Front Med (Lausanne)*, 2020;7:498.
- [9] Glennie MJ, French RR, Cragg MS, Taylor RP. Mechanisms of killing by anti-CD20 monoclonal antibodies. *Mol Immunol*, 2007;44:3823-37.
- [10] Reddy V, Klein C, Isenberg DA, Glennie MJ, Cambridge G, Cragg MS *et al.* Obinutuzumab induces superior B-cell cytotoxicity to rituximab in rheumatoid arthritis and systemic lupus erythematosus patient samples. *Rheumatology (Oxford)*, 2017;56:1227-37.
- [11] Klein C, Lammens A, Schafer W, Georges G, Schwaiger M, Mossner E *et al.* Epitope interactions of monoclonal antibodies targeting CD20 and their relationship to functional properties. *MAbs*, 2013;5:22-33.
- [12] Lim SH, Beers SA, French RR, Johnson PW, Glennie MJ, Cragg MS. Anti-CD20 monoclonal antibodies: historical and future perspectives. *Haematologica*, 2010;95:135-43.
- [13] Reddy V, Cambridge G, Isenberg DA, Glennie MJ, Cragg MS, Leandro M. Internalization of Rituximab and the Efficiency of B Cell Depletion in Rheumatoid Arthritis and Systemic Lupus Erythematosus. *Arthritis & rheumatology*, 2015;67:2046-55.
- [14] Reddy V, Croca S, Gerona D, De La Torre I, Isenberg D, McDonald V *et al.* Serum rituximab levels and efficiency of B cell depletion: differences between patients with rheumatoid arthritis and systemic lupus erythematosus. *Rheumatology (Oxford)*, 2013;52:951-2.
- [15] Walport MJ. Complement and systemic lupus erythematosus. *Arthritis Res*, 2002;4 Suppl 3:S279-93.
- [16] Ahuja A, Teichmann LL, Wang H, Dunn R, Kehry MR, Shlomchik MJ. An acquired defect in IgG-dependent phagocytosis explains the impairment in antibody-mediated cellular depletion in Lupus. *J Immunol*, 2011;187:3888-94.
- [17] Carter LM, Isenberg DA, Ehrenstein MR. Elevated serum BAFF levels are associated with rising anti-double-stranded DNA antibody levels and disease flare following B cell depletion therapy in systemic lupus erythematosus. *Arthritis Rheum*, 2013;65:2672-9.
- [18] Reddy V, Dahal LN, Cragg MS, Leandro M. Optimising B-cell depletion in autoimmune disease: is obinutuzumab the answer? *Drug Discov Today*, 2016;21:1330-8.
- [19] Anolik JH, Campbell D, Felgar RE, Young F, Sanz I, Rosenblatt J *et al.* The relationship of Fcγ3R genotype to degree of B cell depletion by rituximab in the treatment of systemic lupus erythematosus. *Arthritis Rheum*, 2003;48:455-9.
- [20] Quartuccio L, Fabris M, Moretti M, Barone F, Bombardieri M, Rupolo M *et al.* Resistance to rituximab therapy and local BAFF overexpression in Sjogren's syndrome-related myoepithelial sialadenitis and low-grade parotid B-cell lymphoma. *Open Rheumatol J*, 2008;2:38-43.
- [21] Thien M, Phan TG, Gardam S, Amesbury M, Basten A, Mackay F *et al.* Excess BAFF rescues self-reactive B cells from peripheral deletion and allows them to enter forbidden follicular and marginal zone niches. *Immunity*, 2004;20:785-98.

- [22] Pers JO, Devauchelle V, Daridon C, Bendaoud B, Le Berre R, Bordron A *et al.* BAFF-modulated repopulation of B lymphocytes in the blood and salivary glands of rituximab-treated patients with Sjogren's syndrome. *Arthritis Rheum*, 2007;56:1464-77.
- [23] Edwards JC, Szczepanski L, Szechinski J, Filipowicz-Sosnowska A, Emery P, Close DR *et al.* Efficacy of B-cell-targeted therapy with rituximab in patients with rheumatoid arthritis. *N Engl J Med*, 2004;350:2572-81.
- [24] Furie R, Cascino MD, Garg JP, Aroca G, Alvarez A, Fragoso-Loyo H *et al.* O35 B-cell depletion and response in a randomized, controlled trial of obinutuzumab for proliferative lupus nephritis. *Lupus Science & Medicine*, 2020;7:A27-A8.
- [25] Reddy V, Martinez L, Isenberg DA, Leandro MJ, Cambridge G. Pragmatic Treatment of Patients With Systemic Lupus Erythematosus With Rituximab: Long-Term Effects on Serum Immunoglobulins. *Arthritis Care Res (Hoboken)*, 2017;69:857-66.
- [26] Niederfellner G, Lammens A, Mundigl O, Georges GJ, Schaefer W, Schwaiger M *et al.* Epitope characterization and crystal structure of GA101 provide insights into the molecular basis for type I/II distinction of CD20 antibodies. *Blood*, 2011;118:358-67.
- [27] Mossner E, Brunker P, Moser S, Puntener U, Schmidt C, Herter S *et al.* Increasing the efficacy of CD20 antibody therapy through the engineering of a new type II anti-CD20 antibody with enhanced direct and immune effector cell-mediated B-cell cytotoxicity. *Blood*, 2010;115:4393-402.
- [28] Lee CS, Ashton-Key M, Cogliatti S, Rondeau S, Schmitz SF, Ghielmini M *et al.* Expression of the inhibitory Fc gamma receptor IIB (FCGR2B, CD32B) on follicular lymphoma cells lowers the response rate to rituximab monotherapy (SAKK 35/98). *Br J Haematol*, 2015;168:145-8.
- [29] Horvat M, Kloboves Prevodnik V, Lavrencak J, Jezersek Novakovic B. Predictive significance of the cut-off value of CD20 expression in patients with B-cell lymphoma. *Oncol Rep*, 2010;24:1101-7.
- [30] Leandro MJ. B-cell subpopulations in humans and their differential susceptibility to depletion with anti-CD20 monoclonal antibodies. *Arthritis Res Ther*, 2013;15 Suppl 1:S3.
- [31] Cheema GS, Roschke V, Hilbert DM, Stohl W. Elevated serum B lymphocyte stimulator levels in patients with systemic immune-based rheumatic diseases. *Arthritis Rheum*, 2001;44:1313-9.
- [32] Leandro MJ, Cambridge G, Edwards JC, Ehrenstein MR, Isenberg DA. B-cell depletion in the treatment of patients with systemic lupus erythematosus: a longitudinal analysis of 24 patients. *Rheumatology (Oxford)*, 2005;44:1542-5.
- [33] Leandro MJ, Edwards JC, Cambridge G. Clinical outcome in 22 patients with rheumatoid arthritis treated with B lymphocyte depletion. *Ann Rheum Dis*, 2002;61:883-8.
- [34] Vital EM, Rawstron AC, Dass S, Henshaw K, Madden J, Emery P *et al.* Reduced-dose rituximab in rheumatoid arthritis: efficacy depends on degree of B cell depletion. *Arthritis Rheum*, 2011;63:603-8.
- [35] Diaz-Lagares C, Croca S, Sangle S, Vital EM, Catapano F, Martinez-Berriotxo A *et al.* Efficacy of rituximab in 164 patients with biopsy-proven lupus nephritis: pooled data from European cohorts. *Autoimmun Rev*, 2012;11:357-64.
- [36] Lech M, Anders HJ. The pathogenesis of lupus nephritis. *J Am Soc Nephrol*, 2013;24:1357-66.
- [37] Shen Y, Sun CY, Wu FX, Chen Y, Dai M, Yan YC *et al.* Association of intrarenal B-cell infiltrates with clinical outcome in lupus nephritis: a study of 192 cases. *Clin Dev Immunol*, 2012;2012:967584.
- [38] Zickert A, Lannfelt K, Schmidt Mende J, Sundelin B, Gunnarsson I. Resorption of immune deposits in membranous lupus nephritis following rituximab vs conventional immunosuppressive treatment. *Rheumatology (Oxford)*, 2020.
- [39] Lim SH, Vaughan AT, Ashton-Key M, Williams EL, Dixon SV, Chan HT *et al.* Fc gamma receptor IIb on target B cells promotes rituximab internalization and reduces clinical efficacy. *Blood*, 2011;118:2530-40.
- [40] Golay J, Lazzari M, Facchinetti V, Bernasconi S, Borleri G, Barbui T *et al.* CD20 levels determine the in vitro susceptibility to rituximab and complement of B-cell chronic lymphocytic leukemia: further regulation by CD55 and CD59. *Blood*, 2001;98:3383-9.

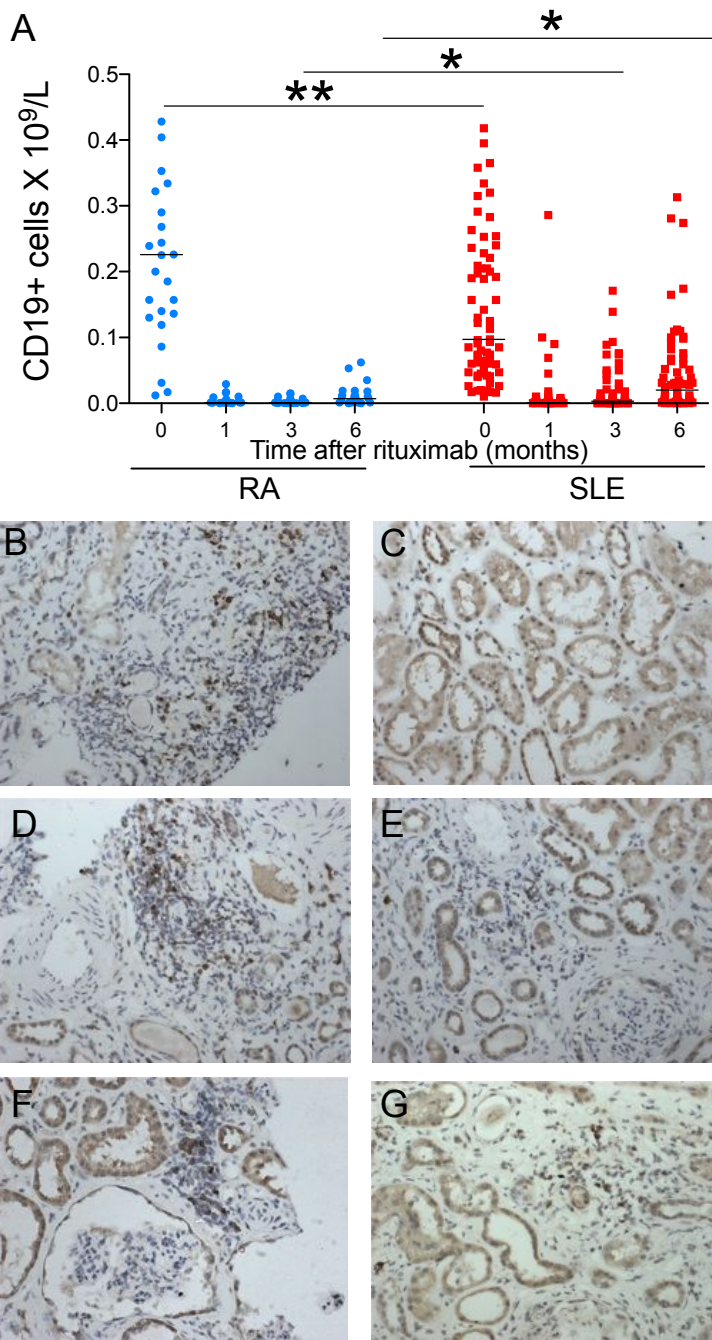
Peripheral and Renal B-cell depletion in SLE

- 1
2 [41] van Meerten T, van Rijn RS, Hol S, Hagenbeek A, Ebeling SB. Complement-induced cell
3 death by rituximab depends on CD20 expression level and acts complementary to
4 antibody-dependent cellular cytotoxicity. *Clin Cancer Res*, 2006;12:4027-35.
- 5 [42] He B, Chadburn A, Jou E, Schattner EJ, Knowles DM, Cerutti A. Lymphoma B cells evade
6 apoptosis through the TNF family members BAFF/BLyS and APRIL. *J Immunol*,
7 2004;172:3268-79.
- 8 [43] Kraaij T, Arends EJ, van Dam LS, Kamerling SWA, van Daele PLA, Bredewold OW *et al*.
9 Long-term effects of combined B-cell immunomodulation with rituximab and belimumab in
10 severe, refractory systemic lupus erythematosus: 2-year results. *Nephrol Dial Transplant*,
11 2020.
- 12 [44] Merrill JT, Neuwelt CM, Wallace DJ, Shanahan JC, Latinis KM, Oates JC *et al*. Efficacy and
13 safety of rituximab in moderately-to-severely active systemic lupus erythematosus: the
14 randomized, double-blind, phase II/III systemic lupus erythematosus evaluation of rituximab
15 trial. *Arthritis Rheum*, 2010;62:222-33.
16
17
18
19
20
21

FIGURES

22
23
24 Figure 1. B-cell depletion following rituximab.
25
26
27
28
29
30
31
32
33
34
35
36
37
38
39
40
41
42
43
44
45
46
47
48
49
50
51
52
53
54
55
56
57
58
59
60

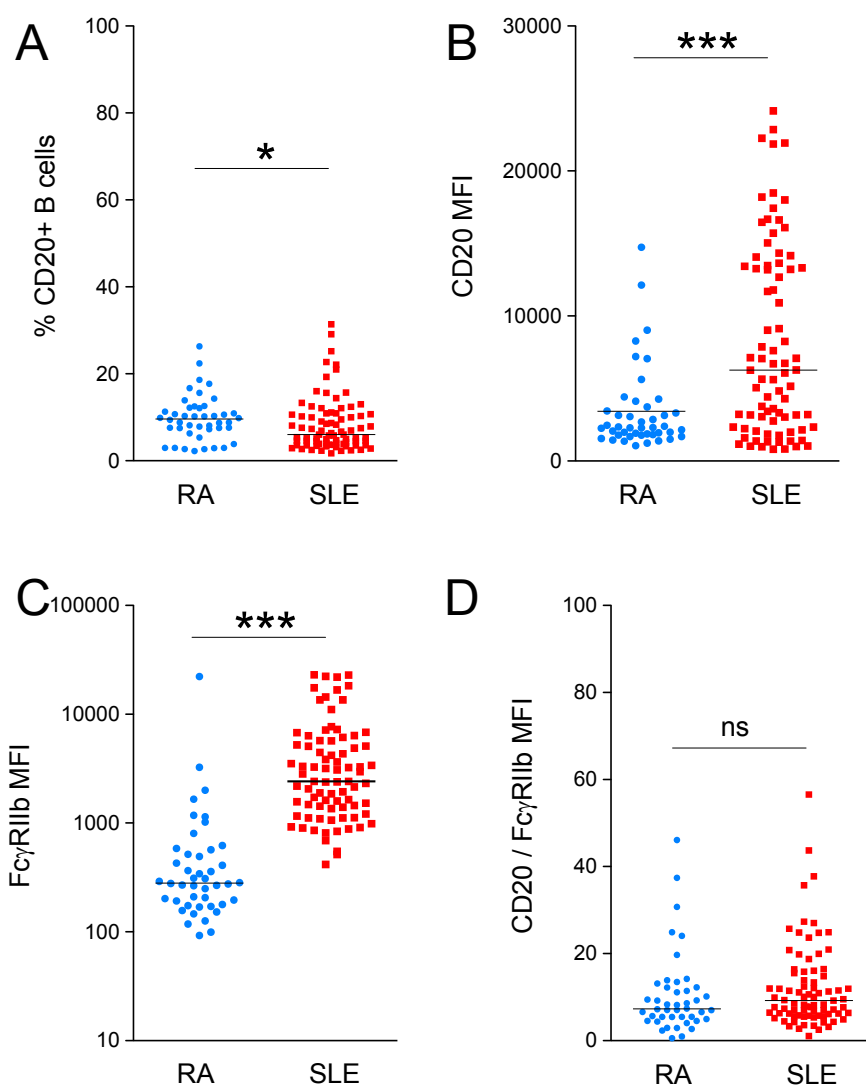
Peripheral and Renal B-cell depletion in SLE



A) Peripheral and renal B-cell depletion with rituximab in patients with Rheumatoid Arthritis and Systemic Lupus Erythematosus. CD19+ B-cell counts in peripheral blood before and after treatment with rituximab in patients with RA (n = 27) and SLE (n = 71). B-G) Immunohistochemistry photomicrographs x 200 of anti-CD79 staining in renal biopsies, which illustrates the degree of B-cell infiltration in the biopsies from patients 1-6, respectively. *, p < 0.05. **, p < 0.001.

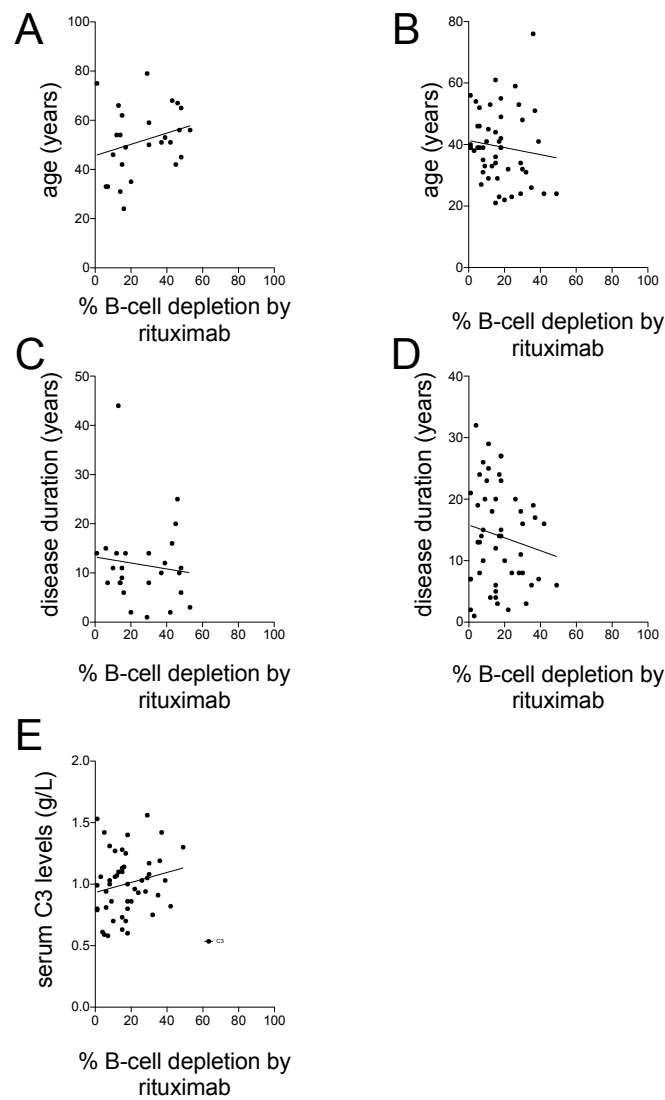
Peripheral and Renal B-cell depletion in SLE

Figure 2. The mean fluorescence intensity of CD20 and Fc γ RIIb on B cells from patients with RA and SLE.



A) The frequency of CD20+ B cells in patients with RA and SLE; B) the MFI of CD20 in patients with RA and SLE; C) the MFI of Fc γ RIIb in patients with RA and SLE; and D) the ratio of MFI of CD20 and MFI of Fc γ RIIb of CD20+ B cells from patients with RA and SLE. MFI, mean fluorescence intensity; *, $p < 0.05$; ***, $p < 0.0001$.

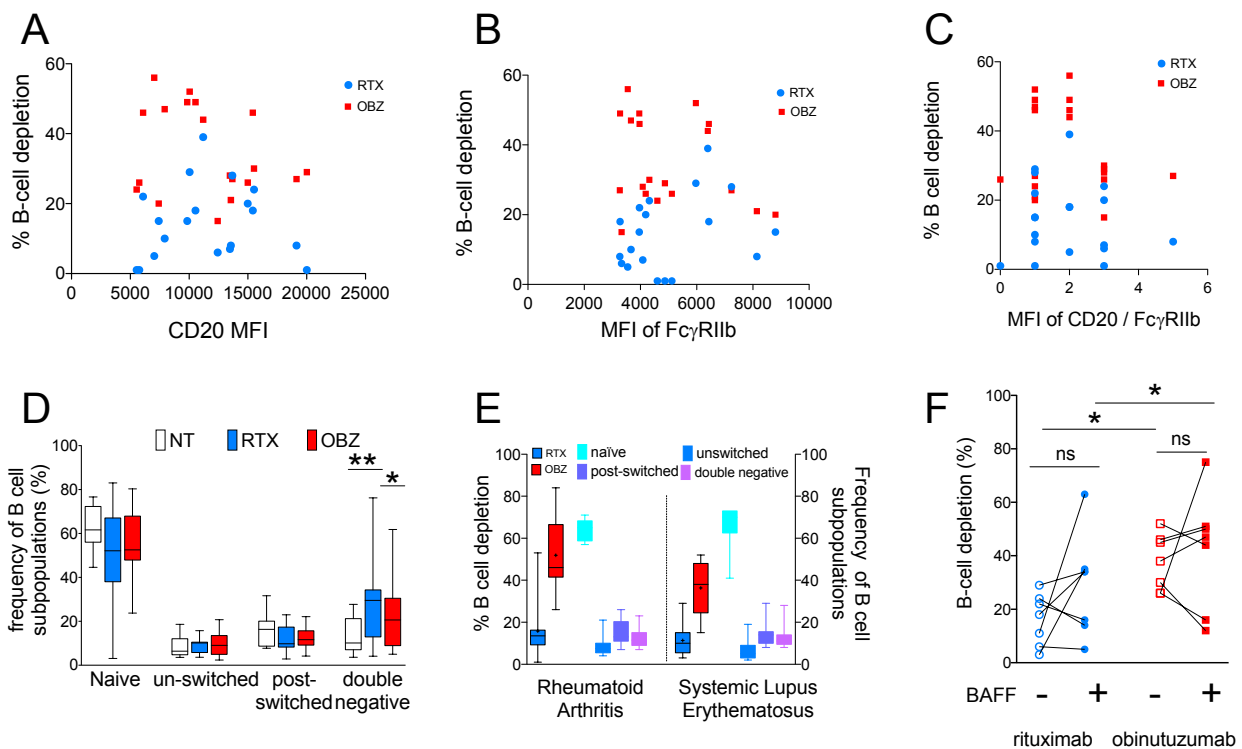
Figure 3. Relationships between patient demographics and BCD in vitro.



Relationships between rituximab-mediated BCD and age of patients with A) RA, B) SLE, disease duration of patients with C) RA and D) SLE and E) serum C3 levels in patients with SLE.

Peripheral and Renal B-cell depletion in SLE

Fig 4. BCD in vitro with rituximab and obinutuzumab: relationship with B-cell expression of CD20 and FcγRIIb; B cell subpopulations and the effect of BAFF.



Relationship between percentage B-cell depletion with rituximab and obinutuzumab in whole blood assays and A) the MFI of CD20; B) the MFI FcγRIIb and C) the MFI of CD20 / FcγRIIb on B cells from patients with SLE (n = 19). D) Composition of B cell subpopulations in the whole blood BCD assay. The frequency of various B cell subpopulations in samples incubated with or without mAbs in samples from patients with RA (n=9). E) CTI of mAbs in whole blood BCD assay and the distribution of B-cell subpopulations in RA (n = 10) and SLE (n = 9) in peripheral blood prior to incubation with mAbs. F) The effect of excess BAFF on the efficiency of BCD. Each symbol represents an individual sample and the unfilled symbols represent samples incubated without excess BAFF and the filled symbols represent samples incubated with excess BAFF. Naïve, IgD+CD27⁻; unswitched memory B cells, IgD+CD27⁺; switched memory B cells, IgD-CD27⁺; double negative, IgD-CD27⁻. MFI, mean fluorescence intensity; NT, not treated; RTX, rituximab; and OBZ, obinutuzumab; *, p < 0.05 and **, p < 0.001.

TABLES

Table 1. Renal biopsy data and parameters before and after rituximab.

Patient	Prior-Renal biopsy Class after RTX	Previous treatment	Duration between biopsies	Class of renal biopsy after RTX	Treatment at time of biopsy	Creatinine $\mu\text{mol/L}$	PCR mg/mol
1	IV+V	CS, CYC, MMF, Aza, CYA	7 years	V	CS, MMF	66	371
2	n/a	CS, Aza, MMF, CYA	N/A	V	CS, MMF	54	637
3	IV	CS, CYC	11 years	IV-GA/C	CS	764	969
4	IV G/A	CS, CYC, MMF	8 months	VI	CS, CYC	394	883
5	IV+V	CS, MMF	5 months	IV	CS, MMF	461	85
6	IV-G+V	CS, CYC	5 months	IV-GA/C, V	CS, x1 dose CYC	356	627

CS, corticosteroids; CYC, cyclophosphamide; RTX, rituximab; MMF, mycophenolate mofetil; AZA, azathioprine; CYA, Cyclosporin A; PCR, protein-creatinine ratio

Peripheral and Renal B-cell depletion in SLE

Table 2. Peripheral CD19+ B cell counts and staining for B cells in renal biopsy samples and patient outcomes following rituximab treatment.

Patient	Class of LN	Renal biopsy B cell staining		Peripheral B cells	Outcome at latest f/u
		Anti-CD79	Anti-Pax-5		
1	V	↑	↑	↑0.042 x 10 ⁹ /L	progressive CKD
2	V	→	→	↑0.03 x 10 ⁹ /L	Remission (normal renal function)
3	IV-GA/C	↑	↑	↓(≤ 0.002)	Dialysis → ESRF
4	VI	→	→	↓(≤ 0.002)	Stable CKD (on PD)
5	IV	↑	↑	↓(≤ 0.002)	Stable CKD
6	IV-GA/C	↑	↑	↓(≤ 0.002)	Advanced CKD, dialysis dependent

→ minimal staining, ↑ detectable B cells, ↓ suppressed counts (≤ 0.005)

CKD, chronic kidney disease; ESRF, end stage renal failure