



Household Measures for River Flood Risk Reduction in the Czech Republic

Journal:	<i>Journal of Flood Risk Management</i>
Manuscript ID:	JFRM-0085-13.R3
Manuscript Type:	Original Manuscript
Date Submitted by the Author:	n/a
Complete List of Authors:	Duží, Barbora; University of South Bohemia in České Budějovice, Department of Regional Management, Faculty of Economics; Mendel University, Vikhrov, Dmytro; CERGE-EI, Kelman, Ilan; University College London, Institute for Risk and Disaster Reduction; Institute for Global Health; Norwegian Institute of International Affairs (NUPI), Stojanov, Robert; Charles University in Prague, Department of Social Geography & Regional Development, Faculty of Science Juříčka, David; Mendel University in Brno, Department of Geology and Pedology
Keywords:	Risk management, Fluvial, Floodplain, Social

Household Measures for River Flood Risk Reduction in the Czech Republic

Abstract

Interviews with 304 households were used to determine flood risk reduction measures adopted in the case study of the Becva River in the Czech Republic. Uptake of measures was low, irrespective of experience with floods. Financial cost seemed to be a barrier towards implementation, but more work is needed to understand the combination of factors limiting adoption of household flood risk reduction measures. Regression analysis indicated that socio-demographic factors play an important role in household decision-making. More men and more children in a household support the adoption of measures. Perception of living in a flood risk zone, rather than actual experience of flooding, also positively influenced probability of adopting some measures. When a house is elevated up from ground level by 1 metre or more, the likelihood of taking further measures decreased by 20%. Further investigation of these factors and why, not just how, they influence household choices would support flood risk reduction measures, especially under a changing climate.

Keywords

Becva River Basin; Czech Republic; flood damage; flood risk; household measures; flood risk management; river floods

Acknowledgements

The authors are grateful for the support of the respondents and for the research funding from PRVOUK 43 “Geography”. Some of the data reported here were collected and analysed for the PhD dissertation *Perception of Environmental Change: Regional Aspects (Percepce environmentálních změn: regionální aspekty)* by the first author.

1. Introduction

River floods have long affected humanity and the projection under climate change is that they will become more intense and more frequent in some locations (IPCC 2012). Often, seasonal variations will be evident, such as climate change decreasing winter flood frequency in the Elbe and Oder rivers of central Europe (Mudelsee et al. 2003). Since such local trends do not match global projections (IPCC 2012), people's perceptions of their river flood risk—and their responses—can be complex and are worthy of continued study. That is particularly the case since urban development, river engineering, agriculture, and climate change, amongst other factors, can influence river flood risk (e.g. Begum et al. 2007; Djordjevič et al. 2011; Mechler and Kundzewicz 2010; Quevauviller 2011; Parker et al. 2008, 2009; Szöllösi-Nagy and Zevenbergen 2005; van Ree et al. 2011). Building on river flood risk reduction research and practice across Europe and around the world (e.g. Christensen and Christensen 2003; Mechler and Kundzewicz 2010; Szöllösi-Nagy and Zevenbergen 2005), in the context of complicated river flood risk trends in central Europe under climate change (e.g. Becker and Grünewald 2003; Huntjens and Pahl-Wostl 2010; Kundzewicz et al. 2005; Mudelsee et al. 2003; Quevauviller 2011), this paper examines how households in the Czech Republic implement flood risk reduction measures (see also Kundzewicz et al. 2010). The case study is the Beca River in the Czech Republic.

The Czech Republic has experienced numerous flood disasters throughout its history, the most recent at the national level being in 1997, 2002, 2006, 2010, and 2013 (Kaspar and Müller 2008; Schanze 2013). While some studies on flood risk in the Czech Republic exist (e.g. de Moel et al. 2009; Dráb and Říha 2010; Rodda 2005), little work has been done for the Czech Republic regarding individual, household, and community measures for, and perceptions of, flood risk. This paper makes a contribution to filling in this lacuna in the literature by analysing evidence from household interviews regarding experiences with, perceptions of, and measures taken for river flood risk.

This paper has four sections following this introduction. Section 2 scopes this study including a description of hypotheses and case study, followed by Section 3 detailing the methodology. The final two sections are Results/Discussion and Conclusions, indicating the key lessons and how to move forward from the new knowledge presented.

2. Hypotheses and case study

At the household level, numerous studies examine household measures taken for flood risk reduction in Europe to determine why some measures are adopted and others are not (Table 1). Influencing factors include culture, societal status, demography, economy, and risk perception. No clear pattern emerges regarding exactly how different influencing factors lead to different outcomes regarding specific household measures adopted or not adopted.

Consequently, this sub-field within flood risk reduction research has limited theorisation despite the excellent empirical studies represented in Table 1. Part of the reason might be that many of the studies are rather disciplinary, notably from economics and psychology, so their theoretical framings and developments tend to be disciplinary. Part of the reason might be that, quite fairly, context matters. That is, culture plays an especially significant role in dictating the outcomes of hazard-related decision-making and response, a point well-grounded theoretically and empirically in disaster studies (e.g. Hoffman and Oliver-Smith 2002; Krüger et al. 2015).

Insert Table 1

To build on the work in Table 1, to forge new ground by crossing disciplinary boundaries, and to further explore context by using a new case study from a country with limited flood risk reduction literature, we designed our study to investigate household factors covering direct experience with river flooding, local knowledge of the nearby environment especially of waterways, and social and economic characteristics of the household. We tested the following hypotheses for river floods:

H1: Households experiencing more floods and more flood damage tend to implement more flood risk reduction measures.

H2: Higher perception of household flood risk leads to increased adoption of household flood risk reduction measures.

H3: Socio-demographic and economic variables influencing adoption of household flood risk reduction measures are contextual.

1
2
3
4
5 The variables selected are not tied to any specific discipline or theory, instead covering a wide range of factors
6 from across the literature (e.g. Table 1). H1 and H2 represent that cross-disciplinary approach by examining self-
7 reported experience and perception, rather than relying on a discipline. H3 explicitly explores contextuality.
8
9

10
11
12 The new case study is in the east of the Czech Republic, in the foothills of the Beskid Mountains, on the middle
13 part of the Becva River that flows into the Morava River (Figure 1). The river is 61.6 km long with its river basin
14 extending to 1,613 km². The Becva River drains water from a forested, hilly, and precipitation-rich area which
15 has small retention capacity due to bedrock, leading to a highly fluctuating flow rate. The water level tends to be
16 highest during the spring in March and April and lowest during September. Historically, the local people lived
17 with the fluctuating level, but from the end of the nineteenth century, projects were implemented to regulate the
18 water flow. Particularly in the early twentieth century, the river was altered, shortening meanders and smoothing
19 the channel, meaning that people moved closer to the river, with industry, infrastructure, and homes then being
20 located in the floodplain (Pavelka and Trezner 2001).
21
22
23
24
25
26
27
28
29

30
31 *Insert Figure 1*
32
33

34
35 This rural region remains economically disadvantaged, even for the Czech Republic and Central Europe (Povodí
36 Moravy 2009). In addition to the world's financial crisis hitting rural areas hardest in the Czech Republic, the
37 towns located in the foothills along the Becva River still suffer from a post-industrial, post-Communist economy
38 while trying to develop livelihoods in mainly tourism, wood processing, food processing, and a chemical
39 industry.
40
41
42
43
44

45
46 The case study area here is approximately 184 km², its height above sea level ranges from 260-800 m, and its
47 average annual precipitation ranges from 650-800 mm. The selected area involves about a 30 km stretch of the
48 Becva River. Amongst the most important tributaries are the Loucka River in Valasske Mezirici and the Juhyne
49 River near Choryne village. While the impacts of climate change on river floods in the Czech Republic have
50 some research (e.g. Brázdil et al. 2011a, b; Dubrovsky et al. 2005; Yiou et al. 2006), the work has principally
51 been on larger river basins. For the smaller waterways, researchers and authorities suffer from a lack of data (see
52 Borga et al. 2011).
53
54
55
56
57
58
59
60

1
2
3
4
5
6
7 The case study area is hilly with a relatively ragged relief, although the developed floodplain is flat—which is
8 the reason for it having been developed. The floodplain width varies from about 150 m to more than 2.2 km near
9 Lhotka nad Běčvou village. Both erosion and accretion processes are continually evident along the river and
10 floods have led to geomorphological and ecological changes (Demek et al. 2006; Klečka 2004).
11
12

13
14
15
16 The most recent flood disasters in the case study area occurred in July 1997 and May 2010 due to heavy rainfall
17 lasting several days across the entire area (CHMI 1997, 2010; Brázdil et al. 2006; see also Table 4, later). More
18 locally, recent and smaller floods occurred in places in 2006, 2007, and 2009. Properties in the floodplain were
19 inundated by flood water, but farther away from the river, damage was caused by the high water table flooding
20 cellars. The 2006 and 2009 flood water came from a combination of precipitation and snow melt. In addition to
21 flood water from the Běčva River directly, many properties in the case study have been repeatedly flooded from
22 nearby streams when intense, highly localised precipitation leads to quickly rising floods. The streams are small,
23 and the soil is often saturated from previous rainfall, so water can spread quickly over the landscape with limited
24 warning time.
25
26
27
28
29
30
31
32
33
34

35 **3. Methodology**

36
37
38 In the case study area, we chose twelve villages located along the Běčva River and its tributary the Rožnovská
39 Běčva River (Figure 1; Table 2). The main criterion for selecting villages and households was equal distribution
40 across the three risk zones of the Czech national system of designating flood risk areas, which are labelled no
41 risk, low risk, and high risk (see below for definitions). For major rivers, maps and data are publically available
42 from the Czech authority DIBAVOD (Digital Water Management Information) based on Directive 2000/60/EC
43 of the European Parliament and of the Council of 23 October 2000 (the Water Framework Directive) as
44 incorporated into the Czech Water Act No. 254/2001. The main criteria for selecting households within each
45 flood risk zone were permanent residence in and ownership of the house. That ensures that the property
46 occupiers have responsibility for the condition of the property and an incentive to keep the property in good
47 condition.
48
49
50
51
52
53
54
55
56
57
58
59
60

1
2
3
4
5 *Insert Table 2*
6
7

8
9 In 2012, we implemented door-to-door interviews that used both closed questions and open-ended questions
10 about the household measures used for river flood risk reduction. The total number of interviewees was 304,
11 with each interview lasting between 30 and 60 minutes. All houses within the high risk and low risk zones were
12 visited. Across all three zones, an estimated 110 households did not answer their door, despite repeated visits.
13 Additionally, approximately 40 households answered, but then declined to participate. The interviews were
14 completed by Czech native speakers in Czech and the interviewers wrote the answers into the form from verbal
15 answers given by household members.
16
17
18
19
20
21

22
23 For defining flood risk zones, DIBAVOD calculates the return period of a watercourse's peak discharge rate (Q).
24 Q20 means a return period of 20 years for peak discharge rate. High risk zones are defined by the inundation
25 extent of Q20, low-risk zones are between Q20 and Q100, and no-risk zones are outside Q100. No location truly
26 has zero flood risk, since Q200 and Q5,000 still have calculable flood risk. Consequently, even though "no-risk"
27 is the formal designation in the Czech Republic for areas outside Q100, in this paper, the term "very-low-risk
28 zone" is used (it would be clearer if the zones were designated low-, medium-, and high-risk).
29
30
31
32
33
34
35

36 This method is used to define flood risk for the main rivers across the Czech Republic, with the Becva River
37 being the main one in our case study area. For this study, we also sought to define the risk zones for smaller
38 waterways. That was completed by using the information from households' experiences with small floods,
39 consulting with local experts, and applying any further data available locally. Using this material, we labelled
40 high-risk zones as households affected by several major floods over the past 15 years; low-risk zones as
41 households affected to a lesser degree and sometimes indirectly from water table rise; and very-low-risk zones as
42 the remaining areas.
43
44
45
46
47
48
49
50

51 Drawing on the literature (e.g. Begum et al. 2007; Botzen et al. 2013; Kreibich 2011; Kreibich et al. 2005, 2011;
52 Travis 2010; Quevauviller 2011; Weber 2010) in addition to observed local conditions in the interview locations,
53 the following data were collected:
54
55

- 56 • Household characteristics, including household members' ages, education levels, incomes, and family

1
2
3
4
5 structures.

- 6
- 7 ●Flood experiences, including timing, frequency, level of impact, and damage.
- 8
- 9 ●Flood risk reduction measures adopted internally and externally to the structure (see Table 3) including
- 10 economic aspects of households selecting measures.
- 11
- 12 ●Flood risk preparedness, awareness, and perception, including forecasting and warning information sources,
- 13 use of those sources, perception of local quality of life, and perception of flood risk reduction measures and
- 14 systems.
- 15
- 16
- 17
- 18
- 19

20 *Insert Table 3*

21

22

23

24 Table 3 mentions insurance, which is a frequently touted and analysed flood risk management measure (e.g.

25 Crichton 2002, 2008). Flood insurance in the Czech Republic is provided in different ways by private insurance

26 companies only, not by government, as part of different insurance packages, such as household/contents

27 insurance, life insurance, liability insurance, and insurance against natural calamities including flooding. Almost

28 all the companies are foreign, not Czech, and most policies require some level of co-pay for any claim. Flood

29 insurance was cheap until the 1997 floods, after which many insurance companies refused to pay out by

30 disputing the definition of ‘deluge’. Then, they implemented steep price hikes for premiums while, from 200-

31 2003, developed a system of flood risk maps. A further jump in premiums occurred after 2005 when insurance

32 companies developed a more sophisticated system of evaluating flood risk, basic information from which is

33 available in the public domain. Many properties in high flood risk zones or those which have suffered from

34 repeated flooding are, today, almost uninsurable, but the insurance companies do not provide public information

35 regarding their risk calculations, their refusal to insure, their payouts, or their profits/losses from flooding

36 specifically.

37

38

39

40

41

42

43

44

45

46

47

48

49

50

51

52 **4. Results and discussion**

53 **4.1 Interview responses**

1
2
3
4
5
6
7 Out of the 304 households interviewed, 72% (220) had experienced floods (corresponding with the actual high-
8 and low-risk flood zones) with Table 4 indicating the flooding frequency. Table 4 also gives total financial
9 losses, but the respondents' estimates should be viewed with caution, partly due to a long time period since some
10 of the flooding occurred and partly due to their unwillingness to fully discuss financial issues during the
11 interviews. Concerning repeated flooding, 36% (109) of the households interviewed had experienced one flood,
12 28% (86) had experienced two floods, and 8% (25) had experienced at least three floods (the remaining
13 households had not experienced flooding). Given the respondents' reluctance to talk about financial issues, a
14 further data limitation is possible in terms of the respondents not remembering or not fully reporting all the
15 flooding which they had experienced.
16
17
18
19
20
21
22
23

24
25 *Insert Table 4*
26
27
28

29 From the households interviewed, 75% (227) were located on flat land, 22% (67) on moderate slopes, and 3%
30 (10) on steep slopes. 78% (236) have a cellar. Houses are constructed of various building materials: 67% (203)
31 from fired bricks and 19% (57) from either non-fired bricks or a combination of fired and non-fired bricks. The
32 other 14% (44) of houses are constructed from other materials, such as timber or breeze blocks. Seven percent
33 (20) of houses have a stone cellar which is an old, traditional flood risk reduction measure because it is easy to
34 clean after flood waters have receded; however, there are now modern dangers in the form of pesticides,
35 fertilisers, and chemicals which often contaminate flood waters and leave a harmful residue.
36
37
38
39
40
41
42
43

44 Approximately half of the houses have a ground floor up to 1 m above the ground level while 30% (91) have an
45 elevated ground floor higher than 1 m. The 1 m height does not necessarily mean that house is protected against
46 the Q100 flood, since Q is peak discharge rate, but it is a tool to evaluate household measures. In comparing the
47 age of the houses with their ground floor elevation (Figure 2), the proportion of houses with elevated ground
48 floors has substantially decreased over the past twenty years after peaking during Communist times. This
49 decrease has occurred despite the frequent flooding. Moreover, the proportion of houses with elevated ground
50 floors is similar for all risk zones. The developers and owners of new houses are following the fashionable or
51 short-term lower-cost choices of houses which are not raised, despite the flood risk.
52
53
54
55
56
57
58
59
60

1
2
3
4
5
6
7 *Insert Figure 2*
8
9

10
11 Czech legislation recommends, rather than demands, that building authorities elevate the ground floor for new
12 houses in the Q100 zone. Current regulations in the Czech Water Act No. 254/2001 forbid new houses in Q20
13 zones. In practice, monitoring and enforcement are not strict—especially when political and development
14 interests simply “delay” implementation. Yet the cost of elevating houses might nonetheless be acceptable, as
15 shown by Botzen et al. (2013) in the Netherlands who found that 52% of those interviewed stated that they
16 would be willing to pay a substantial investment of approximately €10,000 to elevate a new house to a level that
17 would be deemed safe from flooding. The differences with the Czech Republic might be the level of affluence in
18 the Netherlands alongside a culture highly aware of and respectful about flood dangers.
19
20
21
22
23
24
25
26

27 During our field work, we found another example of “house elevation” through constructing an artificial mound
28 which elevated the terrain on which the house is built by more than 1 m. Although the house was effectively at
29 ground level, it stands on its own artificial hill, elevating it from flood waters. It is possible that this elevation
30 was completed for the view rather than, or in addition to, flood risk reduction.
31
32
33
34
35
36

37 In terms of other measures, only one household (comprising two families) indicated that they decided to move as
38 a result of flood risk. They did not migrate away from their home, but instead, with municipal support, they built
39 a new house in the same community but on a hill. Another two households declined even this short move,
40 despite the municipality offering them financial support. A strong connection to one’s house, land, and place of
41 birth is indicated by the reluctance to consider migration as an option—at least in this community, considering
42 that rural communities around the Czech Republic display much more migration, mainly for economic reasons
43 (Macours and Swinnen 2005). A limitation of this analysis is that the financial support offered by the
44 municipality might not have been deemed to be enough. Perhaps offering a substantial supplement to costs
45 incurred would convince people to break their attachment to their land.
46
47
48
49
50
51
52
53

54
55 In terms of other flood risk reduction measures, the share of households which has purchased insurance for
56 environmental hazards has gradually increased up to 95% in 2010 (see also Table 4). Yet a few respondents
57
58
59
60

1
2
3
4
5 claimed that they could not obtain insurance, because the insurance companies refused to sell it to them or
6 offered high premiums, claiming that the occurrence of floods in their area is more of a trend than of random
7 events. One household gave up trying to restore their damaged ground floor and moved upstairs permanently.
8 Even those with insurance stated that they usually did not receive enough of a pay-out to cover their financial
9 losses.
10
11
12
13

14
15
16 Many factors could be at play here, including under-insuring due to inadequate pre-flood loss estimation or lack
17 of affordability of higher coverage; underestimating the cost of repair and reconstruction; being subject to post-
18 flood price gouging; financial priorities other than full insurance coverage or full reconstruction; or wishing to
19 avoid the disruption entailed by full reconstruction—which could be dangerous for the occupants' health and for
20 the new materials and finishes if the property is not dried out properly after the flood. Because so many
21 respondents were unwilling to discuss financial matters in great depth, it was hard to glean a deep understanding
22 of these factors.
23
24
25
26
27
28
29
30

31 Nonetheless, Tables 5 and 6 show a trend of progress for implementing household measures for flood risk
32 reduction. There are two provisos indicating data and interpretation limitations. First, people might not
33 remember what they did several years ago or might not know what happened prior to their ownership of the
34 house. Second, no one admitted to taking away or reducing measures, but that might have happened.
35 Irrespective, Tables 5 and 6 show that households tend to prefer simple and cheap measures such as moving
36 possessions upstairs or using mobile barriers, rather than changing their floor. In Table 6, the high uptake of
37 hydro-isolation can be explained by it not usually being considered to be a special river flood risk reduction
38 measure. Instead, it is a standard and basic way of avoiding dampness in the house from wet ground. Co-benefits
39 from other measures are not so straightforward to identify, but the nature of the interviews in highlighting floods
40 might have focused respondents on flood-related reason, even where other drivers dominated their decision to
41 implement a measure.
42
43
44
45
46
47
48
49
50

51
52
53 *Insert Table 5*
54
55

56
57 *Insert Table 6*
58
59
60

1
2
3
4
5
6
7 Additionally, the number of measures adopted per household was limited. 59% of households adopted one
8 measure, 27% adopted two measures, 11% adopted three measures, and 4% adopted four measures. A pattern
9 emerged of measures taken based on awareness. Table 7 shows that the higher the flood risk zone in which a
10 house sits, the more measures the household tends to take. For comparison, Miceli et al. (2008) found in Italy
11 that, the higher the flood risk perception, the higher the number of household measures taken to reduce flood
12 risk. The factors creating the difference could be cultural or could be local, but none of the studies explored in
13 depth with interviewees the reasons why flood risk perception did or did not influence flood risk reduction
14 measures adopted. A table equivalent to Table 7 for internal measures is not entirely meaningful, since the main
15 internal measures considered could be implemented and then easily reversed or changed multiple times
16 suggesting that the number of households adopting a measure cannot be given accurately. That contrasts with the
17 main external measures listed which are easy to observe as existing and which are not easily altered.
18
19
20
21
22
23
24
25
26
27
28

29 *Insert Table 7*
30
31
32

33 Despite the data in Table 7, and the increases over time in flood risk reduction measures taken in the Becva
34 River basin (Tables 5 and 6), it is hard to claim that flooding inevitably influenced household choices. Subject to
35 the provisos mentioned above, the number of households adopting measures increases as a continuing trend over
36 time, not simply immediately after floods. As well, some respondents mentioned that they implemented other
37 measures; for example, applying plaster and other finishes which are water-resistant; not applying any plaster or
38 other finishes because frequent floods rendered it useless; building a private wall to keep flood water away from
39 the property; and installing a pump and a mobile boiler.
40
41
42
43
44
45
46

47 Multi-scalar contexts—such as national culture, local affordability, and regulations and media at each
48 governance level—influence flood risk reduction decision-making in all locations, with a cross-case study set of
49 factors or contextual aspects rarely being identifiable (e.g. Kuhlicke et al. 2011; Parker et al. 2008, 2009).
50 Factors which could be explored further include how a neighbour's or relative's measures taken influence a
51 household's choice and how many measures, ostensibly for flood risk reduction, were undertaken as part of
52 wider maintenance or renovation work. A cultural studies perspective, such as through focus groups or
53
54
55
56
57
58
59
60

1
2
3
4
5 unstructured interviews, could glean insights into reasons underlying the observations of specific trends, but
6 authors such as Parker et al. (2008, 2009) warn against trying to impose the transferability of conclusions from
7 one context to another.
8
9

10 11 12 **4.2 Regression** 13

14
15
16 This section uses a probit model as a regression technique through the statistical software STATA to investigate
17 the link amongst various factors and the probability of household flood risk reduction measures being applied.

18
19 The equation used is:

$$20 \quad y_i = \beta_1 X_1 + \beta_2 X_2 + \beta_3 X_3 + \beta_4 X_4 \zeta_i$$

21
22 The variables are:

23
24 y_i equals 1 if a household has undertaken any flood risk reduction measure and 0 otherwise.

25
26 X_1 is a vector measuring the level and intensity of the household's exposure to floods, such as the total number of
27 the floods experienced and the total financial losses from the floods.
28

29
30 X_2 is a vector of dummy variables describing characteristics and the location of the house, such as having a cellar
31 or an elevated ground floor.
32

33
34 X_3 is a vector describing household characteristics, such as gender distribution, education, income, occupation,
35 and family status.
36

37
38 X_4 is a vector measuring individual perception of the household's flood risk and the flood risk reduction
39 measures adopted by the local government.
40

41
42 ζ_i is a stochastic error term that is assumed to be distributed normally, $\zeta_i \sim N(0, \sigma^2)$.
43
44

45
46 We model the decision tree for regression as YES / NO for taking any flood risk reduction measure. If the
47 decision is YES, then we distinguish between interior and exterior measures (Table 3). Table 8 shows the
48 selection (probit) equation for the risk reduction measures.
49
50

51
52
53 *Insert Table 8*
54
55

56
57 Amongst the household characteristics, the most significant correlations were found for gender, number of
58
59
60

1
2
3
4
5 children, and number of people in a household. Having more children or more males in the household tended to
6
7 lead to more flood risk reduction measures being adopted. The presence of one more man increased the number
8
9 of measures by nearly 25%. A vast literature analyses socio-economic and demographic characteristics in
10
11 relation to flood risk reduction behaviour (e.g. Table 1), with some results matching our findings here. Yet
12
13 Thompson and Rayner (1998) and Jaeger et al. (1993) amongst others found weak or limited relations between
14
15 socio-demographic characteristics and risk reduction measures for weather-related events. The differences are
16
17 likely to be contextual to each case study, in that factors not present in the Czech Republic dominate socio-
18
19 demographic characteristics elsewhere. Such factors could be floods experienced at the national scale (e.g. the
20
21 U.K.), a culture keen to avoid flood damage (e.g. the Netherlands), or comparatively strong government-
22
23 mandated programmes for disaster risk reduction (e.g. Switzerland).

24
25 Owing an elevated house decreased the adoption of other flood risk reduction measures by 20%. It is likely that
26
27 households felt that elevation would be sufficient for flood risk reduction, so further measures were not felt to be
28
29 needed. Yet according to the regression, experience did not influence measures adopted. The small positive
30
31 correlation between the total number of floods experienced and measures adopted was not statistically
32
33 significant, which was the same case when checking total flood financial losses. That matches the results in
34
35 section 4.1 that uptake of flood risk reduction measures increased after a flood, but it was hard to link that
36
37 increase with the flood experience. One limitation of this analysis is any possible time delay, such as if
38
39 homeowners take several years after a flood to decide to implement flood risk reduction measures.

40
41
42 Also for financial variables, the more financial resources required for post-flood property rehabilitation or
43
44 reconstruction, the fewer flood risk reduction measures that were adopted. This result is likely because people
45
46 have a fixed budget for post-flood reconstruction, such as an insurance pay-out or loans. Basic reinstatement of a
47
48 liveable house must be completed. Then, if flood risk reduction measures cost more or are assumed to cost more
49
50 than the money available, the opportunity might not exist for spending on, or for investigating the costs of,
51
52 further measures. This result is useful to compare with Botzen et al.'s (2013) data from the Netherlands. That
53
54 study found a high level of willingness-to-pay in a country where flood risk reduction is part of the culture.
55
56 Perhaps homeowners might expect that they would be willing to pay, since they are brought up to believe that,
57
58 but in reality, they cannot afford the measures or, ultimately, choose not to pay for them.
59
60

1
2
3
4
5
6
7 The need to invest one's own resources into post-flood reconstruction was confirmed by the responses. Even if a
8 household had insurance, it generally contributed to the reconstruction costs, with respondents stating that, on
9 average, they contributed 39%. On the other hand, the responses might have been affected by people not wishing
10 to take responsibility for flood risk reduction, since floods are often considered to be someone else's
11 responsibility.
12
13
14
15
16

17
18 Perceptions of the flood risk zone in which a household sits influence flood risk reduction measures taken.
19 Households perceiving that they are in low-risk or high-risk flood risk zones, when compared with perceiving to
20 be in a very-low-risk zone, saw the likelihood of taking a measure rise by 19% and 24% respectively. The
21 literature on Europe presents varying results. For Germany, Grothmann and Reusswig (2006) showed a strong
22 correlation between experience of flood threats and flood risk reduction measures undertaken. The strong
23 correlation indicated the influence of socio-economic characteristics such as age, household income, and house
24 ownership. Conversely for Germany, Kreibich (2011) found that, even though respondents revealed strong
25 worries about climate change and flood risk, that was weakly connected to motivation to take measures. Instead,
26 Kreibich (2011) found socio-economic factors being more important for adopting flood risk reduction measures.
27
28
29
30
31
32
33
34
35
36

37 Perception might not be the same as reality with regards to flood risk. When we compared the actual flood risk
38 zone in which a house sits with the household's perception of the zone which they inhabit, risk underestimation
39 was prominent for the Becva River Basin (Figure 3). Many more people thought that they lived in a very-low-
40 risk zone than actually live there, meaning that those in low- and high-risk zones did not perceive their flood risk
41 to be so high. Rather than ignorance of the flood risk, given their past experiences, the most likely explanation is
42 that people are used to living with floods and perceive them to be less serious than risks which manifest less
43 frequently. In fact, one household member commented, "I do not suffer from floods. I just have my garden and
44 cellar flooded every year." It is possible that one reason for building cellars was to deal with low levels of
45 floodwater whereas now, the cost of including a cellar in a new house might be seen as too high. Perception
46 plays an important role in adopting interior measures. The worse the perception is of the municipality's ability to
47 implement flood risk reduction measures, and the worse the perception is of available exterior flood risk
48 reduction measures, the more likely it is for a household to adopt interior measures.
49
50
51
52
53
54
55
56
57
58
59
60

1
2
3
4
5
6
7 *Insert Figure 3*
8
9

10 Other studies present more nuanced results. Using four categories of risk zones—very low, low, medium, and
11 high—Siegrist and Gutscher (2006) in Switzerland showed that, overall, respondents' risk perceptions
12 corresponded with the experts' risk assessments. In breaking down the results by language (German or French)
13 and geography (urban or mountain areas), patterns emerged of both overestimates and underestimates of flood
14 risk. That supports the notion that factors correlating with perceived flood risk and flood risk reduction measures
15 can be culturally contextual, with the difference in this case being Swiss French or Swiss German. Consequently,
16 it is important to include as wide a range of variables as possible in any analysis.
17
18
19
20
21
22
23

24
25 Siegrist and Gutscher (2006) further revealed that many respondents did not know that flood risk maps exist for
26 the community, implying that people judge flood risk based on experience and their knowledge of their
27 community rather than on formalised calculations. That could be the same for the Beca River Basin. When
28 referring to the high-, low-, and very-low- (called “no”) risk zones, some respondents might interpret the
29 question qualitatively while others might refer to the formal definitions and to the flood risk maps. Nevertheless,
30 even if the respondent is aware of the formal definition and of the maps, they might disagree with the official
31 definitions or they might still respond from a personal rather than formal perspective.
32
33
34
35
36
37
38
39

40 **5. Conclusions**

41
42
43

44 This paper used the Beca River in the Czech Republic as a case study for household interviews examining
45 which household measures were adopted to deal with river flood risk. The reasons for selecting these measures
46 were also explored. Testing the hypotheses yielded:
47
48

49 H1: Households experiencing more floods and more flood damage tend to implement more flood risk reduction
50 measures.
51

52
53 H1 is not confirmed. Trends over time emerged, but those trends could not be attributed due to
54 experiencing specific floods or flooding over the long-term.
55
56
57
58
59
60

1
2
3
4
5 H2: Higher perception of household flood risk leads to increased adoption of household flood risk reduction
6
7 measures.

8
9 H2 is confirmed to a large degree, although further research could explore differences between awareness
10
11 and perception.

12 H3: Socio-demographic and economic variables influencing adoption of household flood risk reduction
13
14 measures are contextual.

15
16 H3 is mostly confirmed. The socio-demographic characteristics explored here appear to influence river
17
18 flood risk reduction measures contextually, although a few financial factors corroborate with some
19
20 literature from other locations, suggesting similarities across contexts. Context here, though, is focused on
21
22 Europe with many of the studies finding that context matters.

23
24 The testing of these three hypotheses demonstrates the importance of cultural context, making it difficult to fully
25
26 theorise or generalise how different influencing factors lead to different outcomes regarding specific household
27
28 measures adopted or not adopted. Nonetheless, the results indicate that such theories should consider focusing
29
30 more on risk perception than on hazard or disaster experience.

31
32
33 Households seem to be reticent to implement extensive measures, with further investigation required to explain
34
35 the full reasoning behind the observed reluctance. Financial cost seemed to be a major limitation, but that would
36
37 tend to refer to immediate or short-term financial cost. An awareness campaign for residents, local authorities,
38
39 and insurers could highlight the large costs incurred in disruption, repairing, and replacement if flood risk
40
41 reduction measures are not implemented. In particular, residents might not be aware of the duration required for
42
43 properly drying a property post-flood (including leaving doors and windows open) to avoid mould forming and
44
45 to permit durable reconstruction, meaning that it is usually not feasible to live in a flooded house for months
46
47 after the waters subside. While subsidies for implementing household-level flood risk reduction measures are
48
49 one possible approach, subsidies would not work for all households and all measures, with moving house
50
51 illustrating how subsidies do not always work.

52
53 Further lessons are revealed by the regression analysis. The household's number of men and number of children,
54
55 along with flood risk perception, were particularly important for determining measures selected and
56
57 implemented. Conversely, elevating one's house was prominent in decreasing the likelihood of adopting other
58
59
60

1
2
3
4
5 measures. These factors need to be explored further to be more certain of why they make such a difference. Such
6 understanding would provide insights into the evaluation of household ability for, interest in, and responsibility
7 for dealing with flood risk.
8
9

10
11
12 Another measure is improved communication amongst experts, municipalities, residents, and the private sector.
13
14 Municipalities have data available on land use and flood risk zones, as well as the authority to change land use
15 and urban development plans to try to reduce flood risk. If residents had more advice from experts—including
16 from their insurance company—regarding flood risk reduction measures, then they might be willing to adopt
17 them subject to financial constraints, saving themselves and their insurer the hassle of being flooded. Academics
18 can assist by disseminating their knowledge to the public, municipalities, and insurance companies and involving
19 them in research (e.g. Otto-Banaszak et al. 2011).
20
21
22
23
24

25
26
27 Further data sets from other locations would assist in scaling up the local understanding achieved in this paper
28 with regional and national perspectives for the Czech Republic. Similar studies in other countries would permit
29 international comparisons to supplement existing literature that examines the role played by culture and cultural
30 differences in household perceptions of flood risk and measures taken (e.g. Begum et al. 2007; Jaeger et al.
31 1993; Thompson and Rayner 1998). These studies could then indicate which techniques, such as insurance or
32 technical changes, might be transferable or not transferable to different locations in different contexts. With
33 floods being a common problem across Europe and around the world, and with their characteristics changing
34 rapidly due to climate change and development, continued research and application will be needed for dealing
35 with flood risk at the household level and at larger governance scales (see also Etkin et al. 2012; Haque et al.
36 2012).
37
38
39
40
41
42
43
44
45
46
47
48
49
50
51
52

53 **References**

54
55
56
57 Becker, A., Grünewald, U. (2003) Flood Risk in Central Europe. *Science*, **300** (5622), 1099.
58
59
60

- 1
2
3
4
5 Begum, S., Stive, M., and Hall, J. (eds) (2007) *Flood Risk Management in Europe: Innovation in Policy and*
6
7 *Practice*. Springer, Dordrecht.
- 8
9 Borgia, M., Anagnostou, E.N., Blöschld, G., and Creutine, J.-D. (2011) Flash flood forecasting, warning and risk
10
11 management: the HYDRATE project. *Env. Sci. Pol.*, **14**, 834-844.
- 12
13 Botzen, W.J.W., Aerts, J.C.J.H., and van den Bergh, J.C.J.M. (2013) Individual preferences for reducing flood
14
15 risk to near zero through elevation. *Mitig. Adapt. Strateg. Glob. Change*, **18** (2), 229-244.
- 16
17 Brázdil, R., Dobrovolny, P., Kakos, V., Kotyza, O. (2006) Historical and Recent Floods in the Czech Republic:
18
19 Causes, Seasonality, Trends, Impacts. In: Schanze, J., Zeman, E., and Marsalek, J. (eds) *Flood Risk*
20
21 *Management: Hazards, Vulnerability and Mitigation Measures* NATO Science Series Volume 67,
22
23 Springer Berlin, pp. 247-259.
- 24
25 Brázdil, R., Řezníčková, L., Valášek, H., Havlíček, M., Dobrovolný, P., Soukalová, E., Řeháneke, T., and
26
27 Skokanová, H. (2011a) Fluctuations of floods of the River Morava (Czech Republic) in the 1691–2009
28
29 period: interactions of natural and anthropogenic factors). *Hydrol. Sci. J.*, **56** (3), 468-485.
- 30
31 Brázdil, R., Máčkaa, Z., Řezníčková, L., Soukalová, E., Dobrovolný, P., and Grygar, T.M. (2011b) Floods and
32
33 floodplain changes of the River Morava, the Strážnické Pomoraví region (Czech Republic) over the past
34
35 130 years. *Hydrol. Sci. J.*, **56** (7), 1166-1185.
- 36
37 CHMI (1997) Vyhodnocení povodňové situace v červenci 1997 (Assessment of the flood situation in July 1997)
38
39 [online]. Czech Hydrometeorological Institute, Prague. <http://voda.chmi.cz/pov97/uvod.html> [accessed 26
40
41 June 2012]
- 42
43 CHMI (2010) Vyhodnocení povodní v květnu a červnu 2010 – Hydrologické vyhodnocení průběhu povodní
44
45 (Assessment of the floods in May and June 2010 - Hydrological evaluation of floods). Czech
46
47 Hydrometeorological Institute, Prague.
- 48
49 Christensen, J.H. and Christensen, O.B. (2003) Severe summertime flooding in Europe. *Nature*, **421**, 805-806.
- 50
51 Crichton, D. (2002) UK and Global Insurance Responses to Flood Hazard. *Wat. Int.*, **27** (1), 119-131.
- 52
53 Crichton, D. (2008) Role of Insurance in Reducing Flood Risk. *Gen. Papers*, **33**, 117-132.
- 54
55 CSI (2011) Czech statistical office [online]. Prague. <http://www.cszo.cz> [accessed 2 January 2014]
- 56
57 Demek, J., Kalvoda, J., Kirchner, K., and Vilímek, V. (2006) Geomorphological Aspects Of Natural Hazards
58
59 and Risks in the Czech Republic. *Stud. Geomorph. Carpatho-Balcanica*, **XL**, 79-92.
- 60
de Moel, H., van Alphen, J., and Aerts, J.C.J.H. (2009) Flood maps in Europe – methods, availability and use.

- 1
2
3
4
5 *Nat. Haz. Earth Syst. Sci.*, **9**, 289-301.
- 6
7 Djordjevič, S., Butler, D., Gourbesville, P., Mark, O., and Pasche, E. (2011) New policies to deal with climate
8 change and other drivers impacting on resilience to flooding in urban areas: the CORFU approach. *Env.*
9 *Sci. Policy*, **14**, 864-873.
- 10
11
12 Dráb, A. and Říha, J. (2010) An approach to the implementation of European Directive 2007/60/EC on flood risk
13 management in the Czech Republic. *Nat. Haz. Earth Syst. Sci.*, **10**, 1977-1987.
- 14
15
16 Dubrovsky, M., Nemesova, I., and Kalvova, J. (2005) Uncertainties in climate change scenarios for the Czech
17 Republic. *Clim. Res.*, **29**, 139-156.
- 18
19
20 Etkin, D., Medalye, J., and Higuchi, K. (2012) Climate warming and natural disaster management: An
21 exploration of the issue. *Clim. Change*, **112**, 585-599.
- 22
23
24 Green, C.H., Tunstall, S.M., and Fordham, M.H. (1991) The Risks from Flooding: Which Risks and Whose
25 Perception? *Disasters*, **15**, (3), 227-236.
- 26
27
28 Grothmann, T. and Reusswig, F. (2006) People at Risk of Flooding: Why Some Residents Take Precautionary
29 Action While Others Do Not. *Nat. Haz.*, **38**, (1-2), 101-120.
- 30
31
32 Haque, M.A., Yamamoto, S.S., Malik, A.A., and Sauerborn, R. (2012) Households' perception of climate
33 change and human health risks: A community perspective. *Env Health* **11** (1):
34 <http://www.ehjournal.net/content/11/1/1> [accessed 20 June 2013]
- 35
36
37 Hoffman, S.M. and Oliver-Smith, A. (eds.) (2002) Catastrophe and culture: the anthropology of disaster. School
38 of American Research Press/James Currey, Santa Fe/Oxford.
- 39
40
41 Huntjens, P. and Pahl-Wostl, C. (2010) Climate change adaptation in European river basins. *Reg. Env. Change*
42 **10**, 263-284.
- 43
44
45 IPCC (2012) Managing the Risks of Extreme Events and Disasters to Advance Climate Change Adaptation.
46 Cambridge University Press, Cambridge.
- 47
48
49 Jaeger, C., Dürrenberger, G., Kastenholz, H. and Truffer, B. (1993) Determinants of environmental action with
50 regard to climate change. *Clim. Change*, **23**, 193-211.
- 51
52
53 Kaspar, M. and Müller, M. (2008) Selection of historic heavy large-scale rainfall events in the Czech Republic.
54 *Nat. Haz. Earth Syst. Sci.*, **8**, 1359-1367.
- 55
56
57 Kelman, I. and Spence, R. (2004) An Overview of Flood Actions on Buildings. *Eng. Geol.* **73** (3-4): 297-309.
- 58
59
60 Klečka, J. (2004) Early stadiums of floodplain forest succession in a wide river beds upon an example of Becva.

- 1
2
3
4
5 *J. Forest Sci.*, **50** (7): 338-352.
- 6
7 Kreibich, H. (2011) Do perceptions of climate change influence precautionary measures? *Int. J. Clim. Change*
8
9 *Strat. Manag.*, **2**, 189-199.
- 10
11 Kreibich, H., Seifert, I., Thieken, A.H., Lindquist, E., Wagner, K. and Merz, B. (2011) Recent changes in flood
12 preparedness of private households and businesses in Germany. *Reg. Env. Change*, **11** (1): 59-71.
- 13
14 Kreibich, H., Thieken, A.H., Petrow, Th., Müller, M. and Merz, B. (2005) Flood loss reduction of private
15 households due to building precautionary measures – lessons learned from the Elbe flood in August 2002.
16
17 *Nat. Haz. Earth Syst. Sci.*, **5**, 117-126.
- 18
19
20 Krüger, F., Bankoff, G., Cannon, T. and Schipper, L. (2015) Cultures and Disasters: Understanding Cultural
21 Framings in Disaster Risk Reduction. Routledge, Abingdon.
- 22
23
24 Kuhlicke, C. Scolobig, A., Tapsell, S., Steinführer, A. and De Marchi, B. (2011) Contextualizing social
25 vulnerability: findings from case studies across Europe. *Nat. Haz.*, **58**, (2), 789-810.
- 26
27
28 Kundzewicz, Z.W., Luger, N., Dankers, R., Hirabayashi, Y., Döll, P., Pińskwar, I., Dysarz, T., Hochrainer, S.
29 and Matczak, P. (2010) Assessing river flood risk and adaptation in Europe—review of projections for the
30 future. *Mitig. Adapt. Strateg. Glob. Change*, **15** (7), 641-656.
- 31
32
33 Kundzewicz, Z.W., Ulbrich, U., Brücher, T., Graczyk, D., Krüger, A., Leckebusch, G.C., Menzel, L., Pińskwar,
34 I., Radziejewski, M. and Szwed, M. (2005) Summer Floods in Central Europe – Climate Change Track?
35
36 *Nat. Haz.*, **36** (1-2), 165-189.
- 37
38
39 Macours, K. and Swinnen, J.F.M. (2005) Agricultural Labor Adjustments in Transition Countries: The Role of
40 Migration and Impact on Poverty. *App. Econ. Persp. Pol.*, **27** (3), 405-441.
- 41
42
43 Mechler, R. and Kundzewicz, Z.W. (2010) Assessing adaptation to extreme weather event in Europe – Editorial.
44
45 *Mitig. Adapt. Strateg. Glob. Change*, **15**, 611-620.
- 46
47
48 Miceli, R., Sotgiu, I. and Settanni, M. (2008) Disaster preparedness and perception of flood risk: A study in an
49 alpine valley in Italy. *J. Env. Psych.*, **28**, 164-173.
- 50
51
52 Mudelsee, M., Borngen, M., Tetzlaff, G. and Grunewald, U. (2003) No upward trends in the occurrence of
53 extreme floods in central Europe. *Nature*, **425**, 166-169.
- 54
55
56 Otto-Banaszak, I., Matczak, P., Wesseler, J. and Wechsung, F. (2011) Different perceptions of adaptation to
57 climate change: a mental model approach applied to the evidence from expert interviews. *Reg. Env.*
58
59 *Change*, **11**, 217-228.
- 60

- 1
2
3
4
5 Parker, D., Priest, S., Schildt, A. and Handmer, J. (2008) *Modelling the Damage Reducing Effects of Flood*
6 *Warnings*. FLOODsite Final Report T10-07-12. Flood Hazard Research Centre, London.
7
8
9 Parker, D., Priest, S.J., and Tapsell, S.M. (2009) Understanding and enhancing the public's behavioural response
10 to flood warning information. *Meteorol. Appl.* **16**, 103-114.
11
12 Parker, D., Tapsell, S. and McCarthy, S. (2007) Enhancing the human benefits of flood warnings. *Nat. Haz.* **43**,
13 (3), 397-414.
14
15
16 Pavelka, J. and Trezner, J. (eds) (2001) *Příroda Valašska (Walachia Nature)*. Český svaz ochránců přírody,
17 Vsetín.
18
19
20 Povodí Moravy (2009) Plán oblasti povodí Moravy 2010 – 2015 (Plan of Morava River Basin 2010-2015)
21 [online]. <http://www.pmo.cz/pop/2009/Morava/End/a-popis/a-1.html> [accessed 20 June 2013].
22
23
24 Quevauviller, P. (2011) Adapting to climate change: reducing water-related risks in Europe – EU policy and
25 research considerations. *Env. Sci. Pol.*, **14**, 722-729.
26
27
28 Rodda, H.J. (2005) The development and application of a flood risk model for the Czech Republic. *Nat. Haz.*,
29 **36**, (1), 207-220.
30
31
32 Schanze, J. 2013. The long way towards tolerable flood risks – initial lessons learnt from the recent Central
33 European floods. *J. Flood Risk Manag.*, **6** (3), 167-168.
34
35 Siegrist, M. and Gutscher, H. (2006) Flooding Risks: A Comparison of Lay People's Perceptions and Expert's
36 Assessments in Switzerland. *Risk Anal.*, **26** (4), 971-979.
37
38
39 Szöllösi-Nagy, A. and Zevenbergen, C. (ed) (2005) *Urban flood management*. A A Balkema, Leiden.
40
41 Terpstra, T. and Gutteling, J.M. (2008) Households' Perceived Responsibilities in Flood Risk Management in
42 The Netherlands. *Int. J. Wat. Res. Dev.*, **24** (4), 555-565.
43
44
45 Thompson, M. and Rayner, S. (1998) Cultural discourses. In: Rayner S. and Malone E.L. (eds) *Human Choice &*
46 *Climate Change*, Vol. 1: the Societal Framework, Battelle Press, Columbus.
47
48
49 Travis, W.R. (2010) Going to extremes: propositions on the social response to severe climate change. *Clim.*
50 *Change*, **98**, 1-19.
51
52
53 van Ree, C.C.D.F., Van, M.A., Heilemann, K., Morris, M.W., Royet, P. and Zevenbergen, C. (2011)
54 FloodProBE: technologies for improved safety of the built environment in relation to flood events. *Env.*
55 *Sci. Pol.*, **14**, 874-883.
56
57
58 Weber, E.U. (2010) What shapes perceptions of climate change? *Wires Clim. Ch.*, **1**, 332-342.
59
60

Whitmarsh, L. (2008) Are flood victims more concerned about climate change than other people? The role of direct experience in risk perception and behavioural response. *J. Risk Res.*, **11** (3), 351-374.

Yiou, P., Ribereau, P., Naveau, P., Nogaj, M. and Brázdil, R. (2006) Statistical analysis of floods in Bohemia (Czech Republic) since 1825. *Hydrol. Sci. J.*, **51** (5), 930-945.

Word count (excluding the abstract, tables, figures, and references): 5,769.

Figure captions

Figure 1: The case study of the middle part of the Becva River, the Czech Republic

Figure 2: House age and ground floor elevation

Figure 3: Comparing actual and perceived flood risk zones

Tables

Table 1: Examples of studies examining household flood risk reduction measures in Europe

Study	Location	Categories of measures investigated by the study
Botzen et al. (2013)	Netherlands	Behavioural and economic: Willingness to pay
Green et al. (1991)	U.K. mainly	Any measure undertaken by those who had experienced flooding
Grothmann and Reusswig (2006)	Germany	Socio-psychological and socio-economic
Jaeger et al. (1993)	Switzerland	Socio-demographic and socio-cultural
Kreibich (2011)	Germany	Socio-economic and psychological: risk

		perception
Miceli et al. (2008)	Italy	Psychological and socio-environmental
Parker et al. (2007)	England and Wales	Behavioural and economic: Responses to flood warnings.
Siegrist and Gustcher (2006)	Switzerland	Psychological: Risk perception and expert assessment
Terpstra and Gutteling (2008)	Netherlands	Psychological: Perceived responsibility and risk perception
Whitmarsh (2008)	UK	Psychological: Experience, risk perception, and behavioural response

Table 2: The villages where interviews were completed

Municipality	Rivers and streams	Population (CSI 2011)	Total number of Interviews	<i>Very low flood risk zone</i>	<i>Low flood risk zone</i>	<i>High flood risk zone</i>
Hrachovec	Becva: Hrachovecky Stream	900	28	3	14	11
Hustopece nad Becvou	Becva: Loucky Stream	1721	12	2	6	4
Choryne	Becva: Juhyne	738	30	10	9	11
Jurinka	Becva	447	14	3	4	7
Krhova	Becva: Srni Stream, Rybnickovy Stream	2002	31	2	4	25
Lhotka nad Becvou	Becva:	231	18	4	11	3
Milotice nad Becvou	Becva:	288	10	4	3	3

Becvou	Miloticky Stream					
Policna	Becva, Vsetinska Becva: Loucka Stream	1718	32	9	17	6
Stritez nad Becvou	Roznovska Becva: Cerny Stream	810	29	15	8	6
Usti	Becva Opatovicky Stream	560	31	14	8	9
Zasova	Roznovska Becva	2,913	31	8	11	12
Zubri	Roznovska Becva Hodorfsky Stream Hamersky Stream	5,422	38	11	12	15
Totals			304	85	107	112

Table 3: Examples of household flood risk reduction measures

Internal to the structure or part of the structure	External to the structure, including planning approaches

<p>-Changing floor material on the ground floor to be water-resistant.</p> <p>-Elevating the ground floor (at least 1 m or above the Q100 flood level) or having garages or simple cellars as the ground floor.</p> <p>-Installing mobile window and door flood barriers.</p> <p>-Using materials and finishes which are water-resistant.</p> <p>Designing and constructing to withstand flood forces and energies (e.g. Kelman and Spence 2004).</p> <p>-Purchasing contents and property insurance against flood damage (as well as other perils).</p> <p>-Using information from external local forecasting and warning systems.</p> <p>-Formulating and testing household evacuation plans.</p> <p>-Moving valuables on upper storeys in case of flood occurrence.</p>	<p>-Not building in flood-prone areas.</p> <p>-Implementing hydro-isolation of the walls to avoid water contact in inundated ground.</p> <p>-Implementing water drainage systems around the house. That can be as simple as basic landscaping and as complex as engineered yards and drives including some or all of drainage pipes, gravel, sewers, earthworks, slopes, and retention basins.</p> <p>-Having personal meteorological and hydrological stations.</p>
--	--

Sources include Begum et al. (2007), Haque et al. (2012), Kreibich et al. (2005, 2011), and Szöllösi-Nagy and Zevenbergen (2005).

Table 4: Household flood experiences and impacts in years with flooding (1997-2012; bolded rows are years with major flooding)

Year	# households flooded out of 304 interviewed	# households flooded at least in the cellar	# households with the ground floor affected	Total losses in millions of CZK	% affected houses which had insurance before the flood date
1997	184	142	82	15.225	75
2000	2				

2002	37	27	12	1.7	82
2006	23	12	11	2.375	86
2007	1				
2008	1				
2009	57	35	14	2.275	91
2010	66	50	21	2.5	95
2012	2				

Table 5: Number of households taking internal household flood risk reduction measures

Time period	Moving possessions to higher storeys	Changing the floor material	Using mobile window and door flood barriers
Before the 1997 flood	28	5	12
1997-2006	+22	+12	+12
2007-2010	+16	+1	+13
After the 2010 flood	+12	+6	+14
Total	78	24	51

Table 6: Number of households of external household flood risk reduction measures

Time period	Hydro-isolation of the house and walls	Hydro-isolation, through drainage around the house	Water management of the plot	Terrain and vegetation adjustments
before the 1997 flood	30	45	20	4
1997-2006	+7	+16	+16	+10
2007-2010	+3	+7	+2	0
After the 2010 flood	+6	+13	+6	+8
Total	46	81	44	22

Table 7: Number of households taking external flood risk reduction measures taken in different flood risk zones

Time scale	Hydro-isolation of the house and walls	Hydro-isolation, through drainage around the house	Water management of the plot	Terrain and vegetation adjustments
Very low risk (85 interviewees total.)	8	19	12	5
Low risk (107 interviewees total.)	13	24	12	8
High risk (112 interviewees total.)	25	38	20	9

Table 8: Estimate from probit regressions

	Exterior measures				Interior measures				
	coefficient	robust standard error	marginal effect	standard error	coefficient	robust standard error	marginal effect	standard error	
floor2	-0.606	0.211 ***	-0.198	0.067 ***	-0.008	0.258	-0.001	0.049	
floor3	-0.299	0.235	-0.098	0.076	0.057	0.317	0.011	0.060	
Total floods	0.116	0.132	0.038	0.043	-0.177	0.164	-0.033	0.031	
tot_loss	0.020	0.079	0.007	0.026	0.186	0.097 *	0.035	0.018 *	
perc2	0.588	0.187 ***	0.193	0.059 ***	0.013	0.251	0.002	0.047	
perc3	0.726	0.304 **	0.238	0.098 **	-0.090	0.368	-0.017	0.069	
perc_mun2	0.407	0.306	0.133	0.099	1.185	0.480 **	0.223	0.087 ***	
perc_mun3	0.432	0.241 *	0.141	0.078 *	0.558	0.270 **	0.105	0.050 **	
perc_mun4	0.394	0.265	0.129	0.086	0.865	0.326 ***	0.163	0.060 ***	
perc_mun5	0.340	0.335	0.111	0.109	0.246	0.379	0.046	0.072	
share	-0.004	0.002 **	-0.001	0.001 **	0.010	0.004 ***	0.002	0.001 ***	
one_kid	-0.035	0.271	-0.011	0.089	0.011	0.329	0.002	0.062	
two_kid	0.302	0.244	0.099	0.079	0.738	0.380 *	0.139	0.071 **	
three_kid	1.398	0.705 **	0.458	0.227 **					
two_pers	0.498	0.329	0.163	0.106	0.330	0.325	0.062	0.061	
three_pers	0.304	0.357	0.100	0.116	0.337	0.360	0.063	0.068	
four_pers	0.285	0.367	0.093	0.119	0.041	0.400	0.008	0.075	
avg_age	0.005	0.007	0.002	0.002	-0.002	0.008	0.000	0.002	
avg_gender	0.759	0.456 *	0.249	0.147 *	-0.772	0.502	-0.146	0.093	
avg_educ	0.003	0.078	0.001	0.026	0.109	0.115	0.021	0.022	
avg_income	0.007	0.010	0.002	0.003	0.015	0.012	0.003	0.002	
_cons	-2.687	1.051			-0.107	1.090			
Region FE	yes			yes					
N obs	304			304					
log-likelihood	-175.3			-102.3					

*** means significance at 1%; ** means significance at 5%; * means significance at 10%

variable	Definition
floor2, floor3	Dummy variables for whether a house contains an elevated ground floor of up to 1 m (floor 2) or higher than 1 m (floor 3). The base category is no elevation.
totalfloods	Total number of floods that a household has experienced, 1-3.
one_fl, two_fl	Dummy variables for one and two floods respectively.
tot_loss	Total financial loss from floods experienced, categorical variable, 1 (less) - 5 (more) losses.

perc2, perc3	Dummy variables for whether a household perceives that their house is located in zone of medium or high risk respectively. The base category is perception of being in a very-low-risk area.
perc_mun2 to perc_mun5	Set of dummy variables for individual perception of flood risk reduction measures done by the local government, for which perc_mun2 compared to perc_mun5 means that fewer measures are perceived and that worse flood risk is perceived. The base category is perceiving the poorest measures.
share	A continuous variable for the share of total financial losses covered from the family budget.
one_kid, two_kid, three_kid	Dummy variables for the number of kids. The base category is no kids.
two_pers, three_pers, four_pers	Dummy variable for the number of people in the household. The base category is one person.
avg_age, avg_gender, avg_educ, avg_income	Variables measuring average age, gender distribution, education level, and household income. For gender distribution, the baseline is one woman and one man in the household and the base shifts depending on how many men and women are in the household.

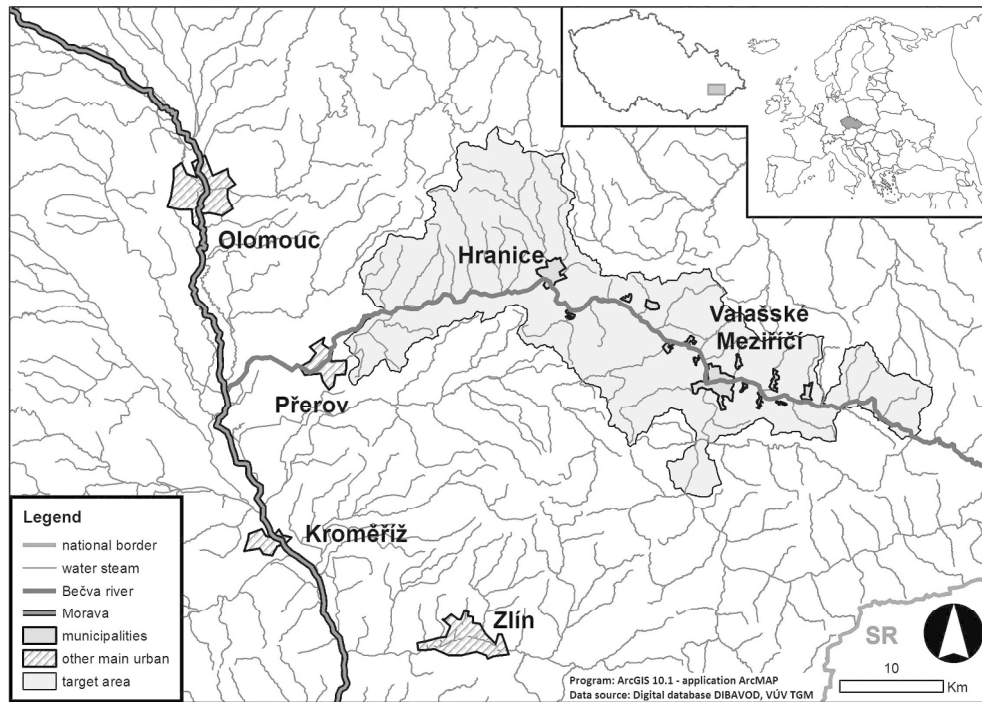


Figure 1: The case study of the middle part of the Bečva River, the Czech Republic
296x210mm (197 x 197 DPI)

1
2
3
4
5
6
7
8
9
10
11
12
13
14
15
16
17
18
19
20
21
22
23
24
25
26
27
28
29
30
31
32
33
34
35
36
37
38
39
40
41
42
43
44
45
46
47
48
49
50
51
52
53
54
55
56
57
58
59
60

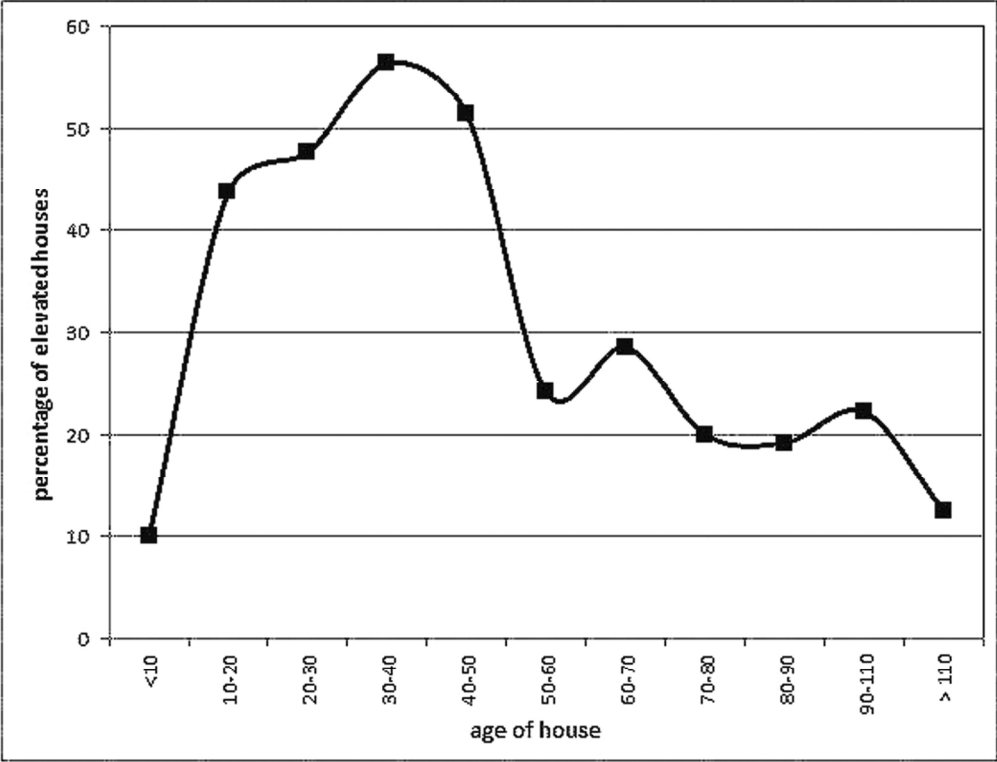


Figure 2: House age and ground floor elevation
122x93mm (300 x 300 DPI)

review

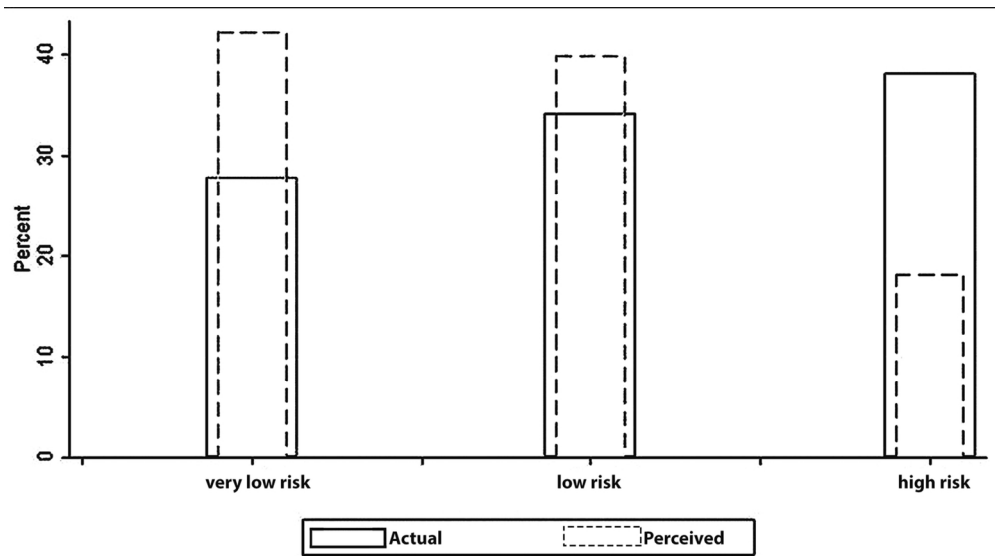


Figure 3: Comparing actual and perceived flood risk zones
126x71mm (300 x 300 DPI)

Peer Review

1
2
3
4
5
6
7
8
9
10
11
12
13
14
15
16
17
18
19
20
21
22
23
24
25
26
27
28
29
30
31
32
33
34
35
36
37
38
39
40
41
42
43
44
45
46
47
48
49
50
51
52
53
54
55
56
57
58
59
60