

Madrid cycle track: Visualising the cyclable city

GUSTAVO ROMANILLOS*; MARTIN ZALTZ AUSTWICK**

**tGIS Transport, Infrastructure and territory Research group, Complutense University of Madrid. Address: Profesor Aranguren S/N, Ciudad Universitaria, 28040 Madrid. Email: gustavro@ucm.es<mailto:m.austwick@ucl.ac.uk>, Telephone: +34 913 945 751; ** Bartlett Centre for Advanced Spatial Analysis, University College London. Address: Gower Street. London WC1E 6BT. Email: m.austwick@ucl.ac.uk. Telephone: +44 20 3108 3905;*

Madrid cycle track: Visualising the cyclable city

Maps are currently experiencing a paradigm shift from static representations to dynamic platforms that capture, visualize and analyse new data, bringing different possibilities for exploration and research. The first objective of this paper is to present a map that illustrates, for the first time, the real flow of casual cyclists and bike messengers in the city of Madrid. The second objective is to describe the development and results of the *Madrid Cycle Track* initiative, an online platform launched with the aim of collecting cycling routes and other information from volunteers. In the framework of this initiative, different online maps are presented and their functionalities described. Finally, a supplemental video visualizes the cyclist flow over the course of a day

Keywords: cycling, bike mobility, cycle map, transport visualization, GPS

1. Introduction

The understanding of urban cyclist behaviour is crucial to planning and designing optimal bike infrastructures and promoting efficient policies aimed at fostering cycling as a sustainable mode of transport in cities. Cyclist behaviour is complex and not easily predictable because it's influenced by a diverse set of factors. With different objectives, it has been traditionally analysed through the information derived from household surveys or more specific group surveys. Regarding the areas of demand analysis, preference evaluation and forecasting, Stated Preference (SP) techniques have been commonly applied (for example, Kroes & Sheldon (1988)), in order to measure the effects of certain improvement on cycle facilities and then forecast the effect of others (Hopkinson & Wardman, 1996) or with the aim of estimating the potential cycle demand in certain urban areas (Ortúzar, Iacobelli, & Valeze, 2000). Also Revealed

Preference (RP) studies have been conducted with different purposes, such as the development of mode choice models (Noland & Kunreuther, 1995).

More specifically, concerning the spatial analysis of cycling for planning purposes, Stated and Revealed Preference methods have been the dominant techniques. In SP studies, respondents were typically asked to evaluate the impact of different factors on their cycle route choice, or to state their preference for a street or a route by evaluating the options using photos of the routes or locations (Bradley & Bovy, 1984; Larsen & El-Geneidy, 2011; Tilahun, Levinson, & Krizek, 2007). Some RP based studies asked respondents to design their cycle route on a map (Ben-aiuva & Morikawa, 1990) and finally, some approaches involved both SP and RP techniques but still using similar methods (Yang & Mesbah, 2013).

In recent years, the research on cycling has grown substantially, and shifted with the emergence of new location-based data allowing more complex spatial analysis. Recent investigations have studied two different types of location data: point data captured by the growing Bike Share Systems spread around the world (Côme & Latifa, 2012; Froehlich, Neumann, & Oliver, 2009; O'Brien, Cheshire, & Batty, 2013; Zaltz Austwick, O'Brien, Strano, & Viana, 2013) and GPS tracking data collected through smartphones applications or specific devices, gathered specifically with research purposes or made available by "Big App" Companies for research or planning (Broach, Dill, & Gliebe, 2011; Harvey & Krizek, 2007; Menghini, Carrasco, Axhausen, & Schüssler, 2010).

By overcoming the traditional SP and RP limitations in terms of high costs, small samples and spatial imprecision (Hood, Sall, & Charlton, 2011), these new

studies are improving the understanding of urban cyclist behaviour and producing outputs to inform the planning and design of bike infrastructures and policies.

This goal of this paper is to describe the objectives, the methodology and the outputs of the initiative *Huella Ciclista de Madrid* (Madrid Cycle Track), launched with the aim of collecting cycling routes and other information from volunteers in the city of Madrid, as well as to present the resulting map –and its online version –that represents all the gathered cyclist routes. Finally, the paper also visualizes the cyclist flow over the course of a day through a supplemental video

Urban cycling in Spain is one of the lowest rates in the European Union (Roldán, Díaz, & Mellado, 2013) and Madrid has a particularly low modal split (0.6% according to (Madrid, 2013)) compared to other cities like Barcelona or Seville (2.0% and 6.6% respectively according to (Barcelona, 2014)). However, the number of cyclists in the city has grown significantly in recent years, and the municipality has launched a series of initiatives, ranging from a bike-share system to new cycling infrastructure, with the objective of reaching a 4.5% of the modal split in 2020 (Madrid, 2014). Specific geographical characteristics that shape the observed patterns of cycling (topography and land use distribution, for example) are discussed in the results section.

2. The Initiative Madrid Cycle Track

2.1. Background and main objectives

Madrid Cycle Track (originally *Huella Ciclista de Madrid*, in Spanish) launched in June 2013 in the framework of a broader research aimed at developing new models for designing optimal bike networks, in which the understanding of cyclist behaviour and route preferences plays a crucial role. In this domain, modelling is targeted to forecast

the potential cyclist flow in different bike network proposals, evaluating the impact of different factors on cyclists route choice (such as the slope of the streets, the type of bikeway, or traffic density) as well as disaggregating cyclists by factors such as age or gender or journeys purpose. In order to perform this evaluation, an analysis of real cyclist routes in Madrid (the research case study) was required.

The available information on Madrid bike mobility was limited to the Transport Household Survey conducted in 2004 and other more specific surveys aimed at analysing the evolution of cycling in certain areas of the city in which bike infrastructure has been implemented. Because these surveys did not provide relevant spatial data for the purpose of the investigation, the research team conceived the initiative *Madrid Cycle Track* with the aim of gathering cyclist routes and other relevant data from volunteers in the city of Madrid.

2.2. The online platform and the participation process

The initiative was launched through an online platform (website available at www.huellaciclistademadrid.es), designed with five different objectives. The first one was to provide information about the project's background and goals, so that potential volunteers could get interested on it. The second goal was to enable the engagement of urban cyclist interested in the initiative. Volunteers could registered, download a free GPS smartphone application, Map My Tracks, and join the group of volunteers within the online platform to make the process minimize the risk of volunteer drop-out.

The third and main objective of the online platform was to collect cyclists' routes. Volunteers could upload the routes to the platform in three different ways. Initially, cyclist could only participate by uploading routes through the smartphone GPS app. All of the data was stored in the app website and then downloaded by the research

team. In a second stage of the project, due to volunteer demand, the gathering process let cyclist to upload GPS that they collected through other GPS apps. The number of cyclists participating through this option was not very high, but was easily implemented and provided some extra GPS tracks. Finally, in order to open the initiative to people not owning a smartphone or not willing to use the app for whatever reason, a participative online map was embedded on the platform enabling volunteers to easily design their cycle routes on a map with accuracy and with the possibility of providing some extra information about themselves (like age and gender) and their routes (like purpose and frequency of the journey or safety of the route).

The fourth goal was to let cyclist visualise their routes, get access to different statistics and explore some data about their activity (distance and time travelled, gradient, slope, speed, etc.). Volunteers could also look up other group members' activity and get in touch with them by text messages. These functionalities provided the sense of belonging to a community, and encourage people to participate and to invite other people to join the initiative. Figure 1 shows a screenshot of the online platform illustrating collected cyclists' routes.

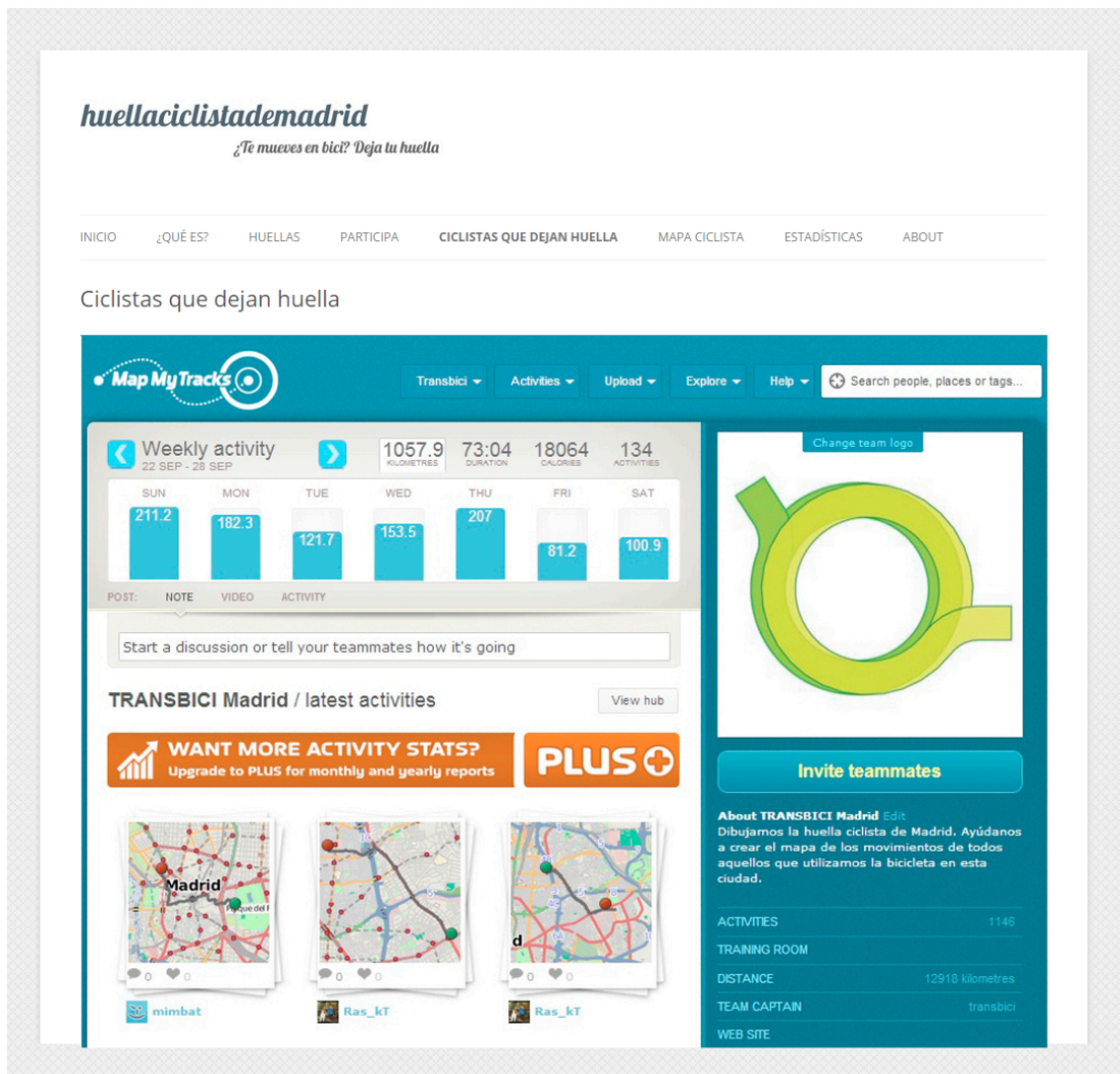


Figure 1. Screenshot of the online platform illustrating collected cyclists' routes

Finally, the fifth objective of the online platform was to visualize the *collective cycle track* through different online maps that represented the evolution and the growth of the track over time. The representation of all the routes together through online maps let the possibility of exploring the city, visualizing the streets with highest levels of cyclist flow according, for example, or relating routes to journey purpose. However, providing appealing feedback to the volunteers that altruistically participated on the initiative was a goal in itself. They could not only visualise the collective track but to identify and look up individual contributions by clicking on the routes. These online maps are described in more detail in later sections.

2.3. *Bike messengers engagement*

Bike messengers companies are experiencing a renaissance, playing a growing role in the delivery of packages and mail in many major cities (Fleming, 2012; Hong, Wei, & Wei, 2006; Kidder, 2008). Cycle couriering is a competitive transport mod for the delivery of time-sensitive materials in the core of many metropolitan areas (Kidder, 2008, 2011), but also is attractive from a sustainability perspective. Many cities are implementing policies aimed at fostering this sustainable transport system in urban areas (Fleming, 2012; Hong et al., 2006). In this sense, the study of bike messengers' mobility could provide some relevant clues for better implementing these planning and policy strategies. However, while bike messengers have been studied from the social research field (Fincham, 2007; Kidder, 2011) or regarding environmental questions (Bernmark, Wiktorin, Svartengren, Lewné, & Aberg, 2006), their mobility is underexplored and has not been spatially analysed (with few exceptions, for example (Kidder, 2008)), in comparison with casual cyclists or other transport modes.

The city of Madrid is not an exception and several new bike messengers companies emerged recently. Our interest for studying and comparing their mobility patterns with the one of casual bikers for which we had started collecting data led us to open the Madrid Cycle Track initiative to their participation. On November 2013, four different companies based in Madrid joined the initiative and started to track their activity: *Emakers*, *Trébol ecomensajeros*, *Mensos* and *BikePost ecomensajeros*.

Though the bike messengers' activity was eventually integrated in the existing online platform, the methodology followed to collect their routes differed from the one followed with casual bikers. Since couriers cycle many hours a day and often use their phones with working purposes, smartphone GPS app have serious issues around battery

life. Instead, these companies were equipped with specific cycling GPS devices (Garmin EDE 200). Their tracks were initially uploaded to a Garmin online platform (Garmin Connect), and then downloaded and integrated in the online platform of Madrid Cycle Track, where they were visualized through an independent online map, similar to the one displaying casual bike mobility.

2.4. Results

6,022 cycle routes were gathered, resulting in 48,122 km of tracks uploaded by 328 volunteers participating from June 2013 to September 2014, taking into account both the casual cyclists and bike messengers.

Casual cyclists results

Casual cyclists' routes were mainly collected from June 2013 to March 2014, after a two month period of gathering routes for testing the app and the online platform performances. The initiative collected 37,345 km of cycle routes obtained from 3,970 journeys. From them, 327 were gathered through the "Design your route" map, and the rest are GPS tracks collected through the online, with 307 participants in total. The proportion of males and females in this sample was 72%-28% respectively, figures that correspond well to existing local surveys (DOYMO, 2011; Monzon de Cáceres, Rondinella, & Muñoz López, 2011). Figure 2 illustrates the gender proportion according to age.

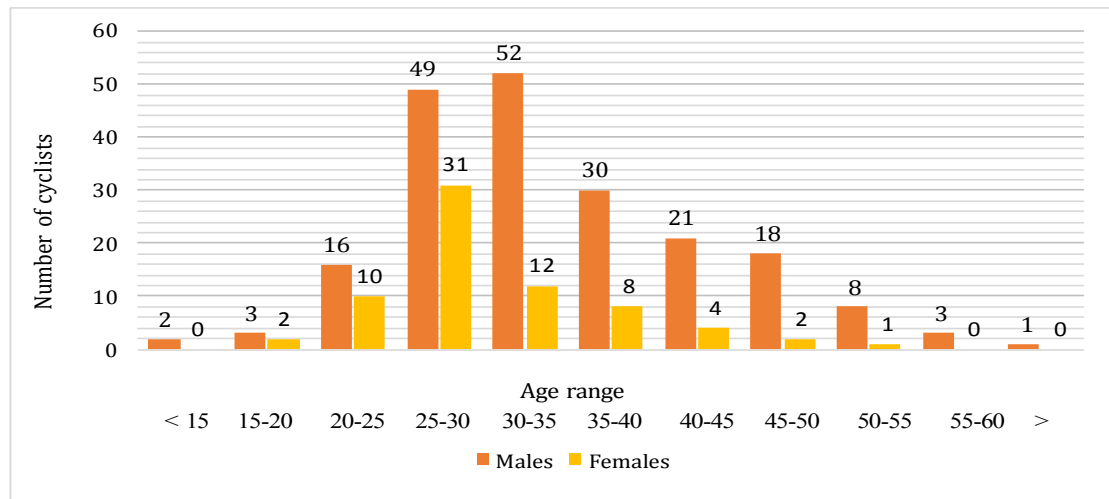


Figure 2. Cyclists according to age and gender

The data obtained from the routes revealed differences in average speed, distance and travel time, according to the purpose of the journey. Table 1 shows summary statistics regarding this.

Table 1. Route statistics according to the purpose of the journey

Purpose of the journey	Routes (%)	Routes* (%)	Speed Av. (km/h)	Time (min) Average	Distance (m) Average
Commuting	31.11	42.19	15.82	24.52	5,889
Leisure	17.17	23.28	15.15	23.94	5,705
Sport	5.72	7.76	16.19	80.81	21,002
Shopping	6.30	8.55	14.66	22.29	5,648
Management / other	5.51	7.47	15.18	17.07	4,231
Study	7.93	10.76	14.82	21.12	5,201
Unknown	26.26	-	14.28	28.30	6,638
Total/Mean over total	100.00	100.00	15.42	31.64	7,947

* Routes over total number with known purpose

The map showing all the routes together yields clear mobility patterns to the trained eye. For example, the business districts spread along the Castellana axis and the employment associated with it explains a high volume of commuter cyclists; journeys around the University Campus may include trips with mixed purposes such as leisure, sport, commuting and study; other areas such as the *Casa de Campo* park, the *Madrid Río*

riverside park or the *Cycling Belt* present mainly leisure and sport journeys. A surprising finding when exploring the map is the fact that streets with high level of motor traffic are used by a significant number of cyclists. Past surveys report that intensive traffic is one of the most significant barriers to cycling, especially for non-cyclists considering adopting cycling (Monzon de Cáceres et al., 2011). Finally, at a neighbourhood scale, some other interesting patterns can be identified; for example, the influence of the slope in hilly areas of the city, evidenced by the use of different streets when going up or down on similar routes.

Bike messengers results

Bike messengers' routes were collected from November 2013 to September 2014, though the companies participated in different moments throughout this period of time. 2,052 routes were gathered from four different companies, providing 10,777 cycled kilometres. The total number of cyclists participating in the initiative was 23. After a cleaning process some routes were discarded (due to other possible purposes rather than couriership) and finally the route sample we analysed and visualised was composed of 1,722 routes and 9,143 km. Bikers' socio-demographic data were not provided by the companies, though their profile was similar: all were male and aged between 18 to 42. Three different type of bikes were used by the messengers. Depending on the volume and weight of the material to deliver, apart from *casual bikes*, they rode *bullet cargo bikes* (or freight bikes) and *cargo trike bikes* (or freight tricycles), though the sample gathered includes very few of the latter. Some of the bullet cargo bikes and the cargo bikes featured electric assistance.

The resulting map illustrates different mobility patterns compared to the ones obtained from casual bikers. The map illustrates that the main streets of the city, often those

presenting highest values of vehicle traffic density, showed also the maximum cycle flow values, evidencing that bike messengers are more used and less afraid of coping with vehicles. The video visualisation also evidences the different flow patterns over the course of the day, almost complementary. Casual cyclists' performance shows the classical two peaks, early in the morning and then in the evening, and bike messengers' activity is more distributed throughout the morning and afternoon.

Finally, the analysis of the data derived from the GPS tracks revealed some interesting and also unexpected findings on bike messengers' behaviour. Though it is not the objective of this paper to describe them in detail, some interesting outcomes can be highlighted. It was expected that the average speed of messengers riding casual bikes (19.6 km/h) was higher than those of casual cyclists (15.42 km/h), but we found surprising that the average speed of messengers riding bullit cargo bikes is revealed as similar (19.7 km/h) to the one of messengers riding casual bikes. In this particular case, this finding can be due to the electric assistance that most of the bullit cargo bikes features, and the way it helps messengers in a hilly city like Madrid. Though they are also electrically assisted, the average speed of cargo trike bike was notably lower than the other ones (11.4 km/h). Other variables, such as the average distance or the height gradient of the journeys, showed also clear differences. Table 2 illustrates some basic statistics on bike messengers mobility according to the type of the bike used.

Table 2. Cycling statistics according to the type of bike of the messengers

Type of Bike	Routes (Uds.)	Speed Av.(km/h)	Gradient Av. (m)	Time (min) Average	Distance (m) Average
Normal bike	1,553	19.6	95.8	30.49	5,245
Bullit bike	131	19.7	63.7	11.26	3,061
Cargo trike	37	11.4	134.1	14.85	2,494

3. The Online Maps

The *Madrid Cycle Track* web platform (www.huellaciclistademadrid.es) hosts different online maps aimed at illustrating both the casual cyclists' and the bike messengers' routes, and its evolution over time. All the online maps have been designed using the *ArcGIS Online* platform. They are finally embedded in different pages of the website (a *WordPress* blog) using *iframes*. In order to better configure the presentation of these maps within the website, we have used the *Web Maps for WordPress* and the *iframe* plugins.

The use of online maps offers many advantages. Because of the different functionalities they provide, they are more dynamic, more complete and easier to explore than conventional printed or digital maps. It is possible to change the extent and the scale of the map, so that we can have an idea of the global cyclist track (Figure 3) as well as to explore the cyclist flow in specific streets. We can select different base maps (provided by ArcGIS Online or other Web Maps Services) or search for specific locations. We also have access to information regarding the routes and the cyclists behind them. By selecting any track, a pop-up window emerge (Figure 4) showing different data such as the name (username), age and gender of the cyclists, or the purpose of the journey, distance travelled, average speed, time, gradient, etc. This functionalities made the map attractive not only for the cyclist community participating in the project but also for other people interested in exploring bike mobility in Madrid.

Finally, the initiative was released to people not owning a smartphone through the "Design your route map" (Figure 5), another online map opened to public edition. Volunteers could easily design their own cyclist route on the map, using the base maps

and the zoom for more accuracy, and once finished, they could introduce some personal information (username, age and gender) as well as some other information regarding the route (purpose, frequency, safety, etc.). This map was also designed using ArcGIS Online platform. This map is accessible at the website, through the label *Participa/Dibuja tu huella* in the Menu bar.

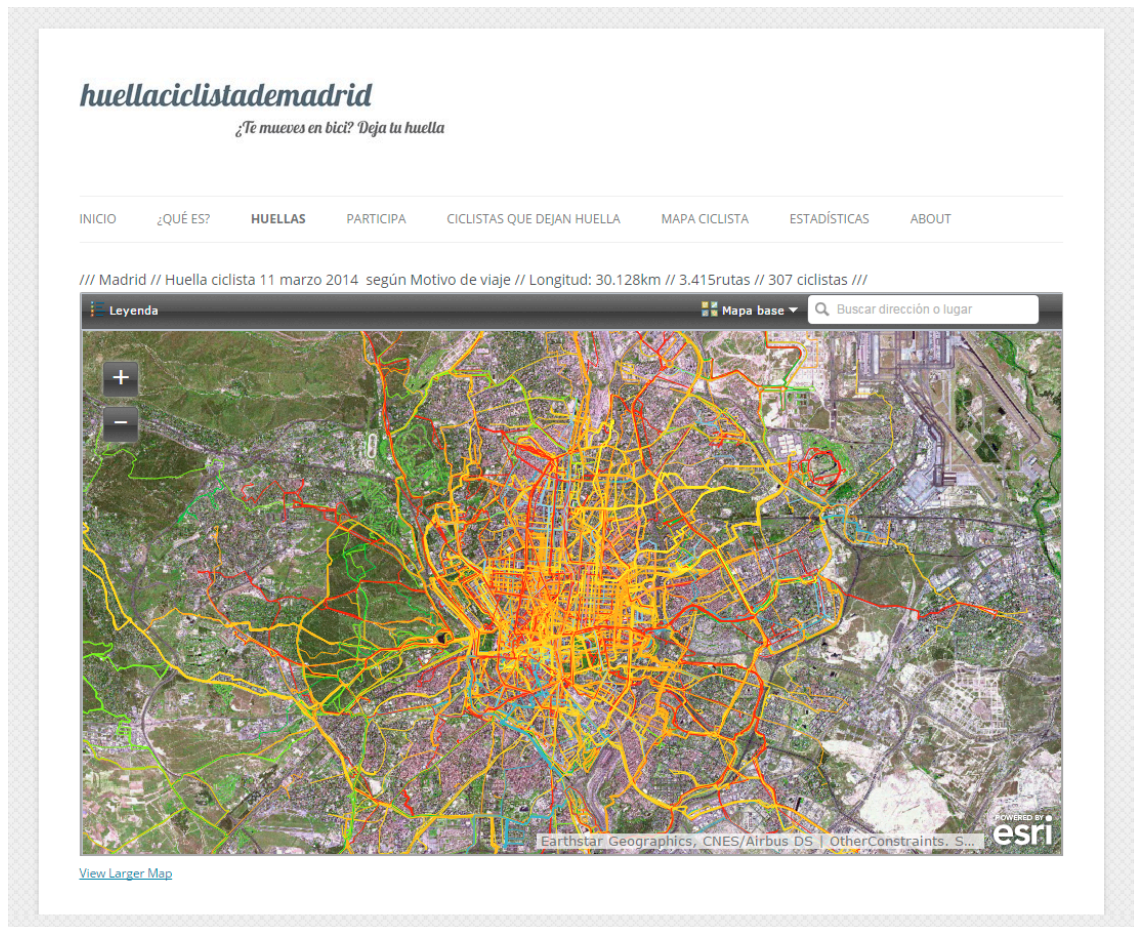


Figure 3. Screenshot of the online map illustrating casual cyclists' mobility

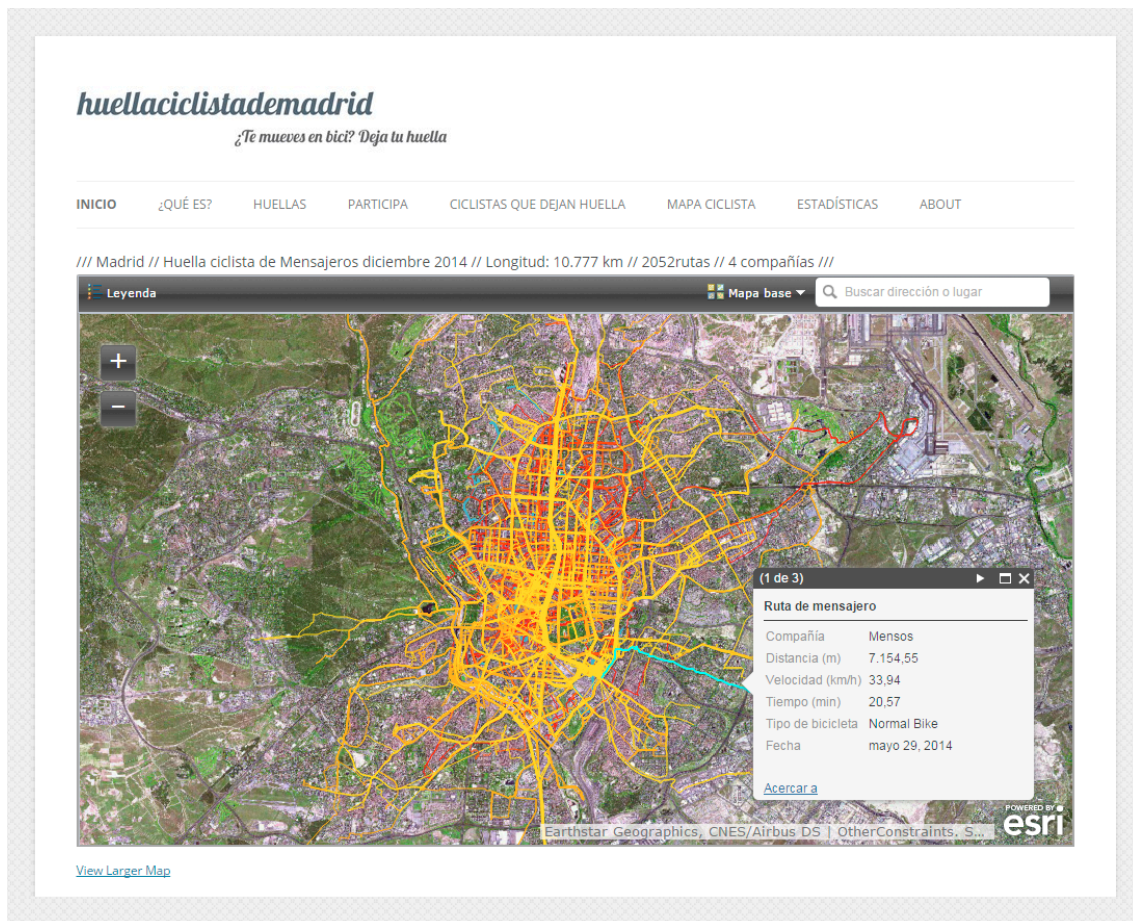


Figure 4. Screenshot of the online map illustrating bike messengers mobility and a pop-up window with information about the selected route.

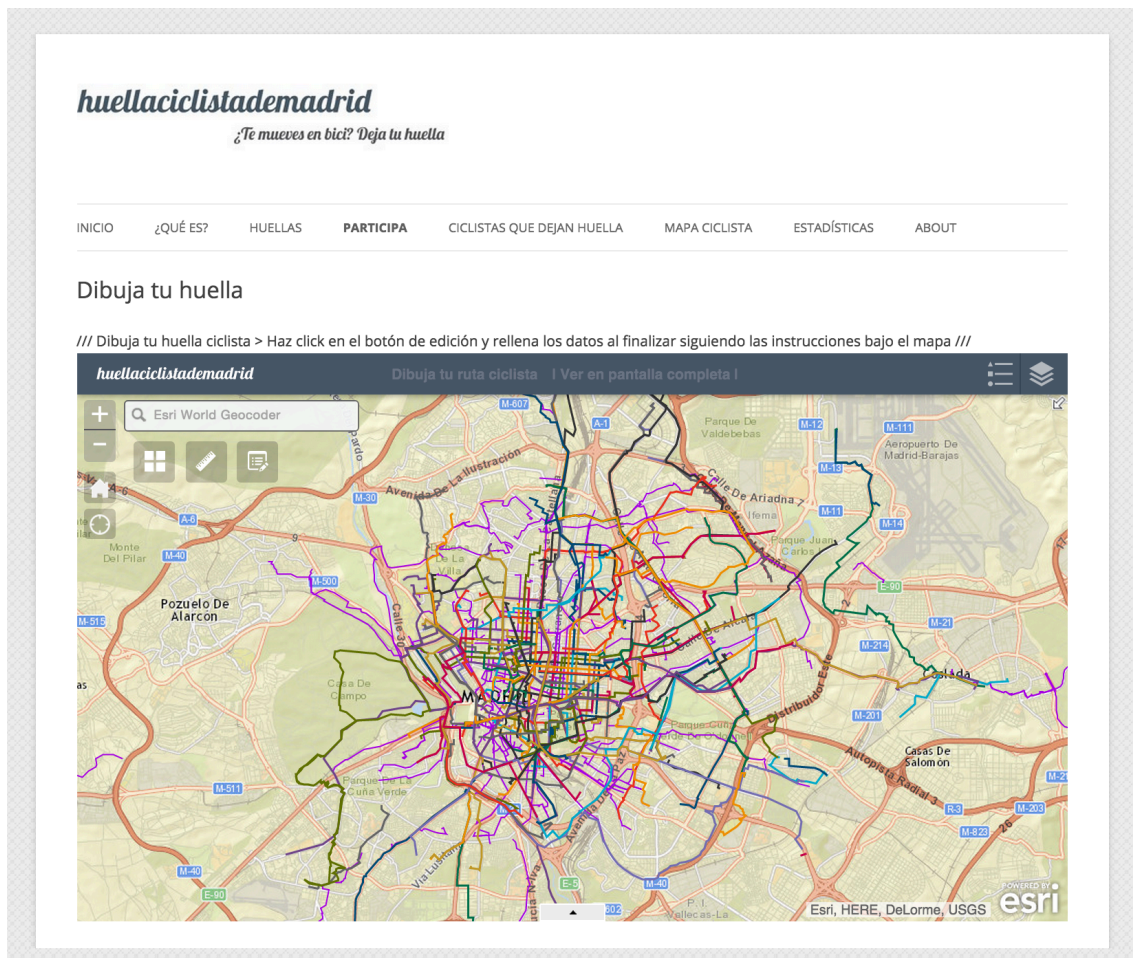


Figure 5. Screenshot of the “Design your route” online map.

4. The Map

The map canvas illustrates both the casual cyclists’ and the bike messengers’ collected routes through four different maps. The first map represents casual cyclist mobility on a map at a metropolitan scale. Routes are symbolized according to the purpose of the journey, distinguishing between work-commuting, study, shopping, leisure, sport and others, so that it is possible to visualize not only overall cyclist flow but the spatial patterns that emerge regarding the different purposes of cyclist journeys. A second map zooms into a central urban area, showing in detail the diverse level of cyclist flow through the different streets. The third map illustrates bike messenger mobility at the

same metropolitan scale and extent used in the first map, so that it not only represents the general cyclist flow but makes possible the comparison between the two different mobilities. In this case, routes are symbolized according to the bike messengers company. The map revealed some differences, such as the extent of the global cycle track, but also others that became clearer in the fourth map that zooms into another central urban area. The visualization of the tracks evidenced a stronger preference for riding in the main streets even where they have the highest motor traffic flow.

The maps represent the routes collected from 327 GPS tracks and the routes designed by cyclist through the “Design your route” online map. In order to represent cyclist flow as a collection of different routes, these track lines were deliberately not matched to any street network layer (Figure 6). Finally, the routes are displayed over a satellite image, a GeoEye ortophoto obtained by using an ESRI web map service with ArcGIS 10.2. Different Photoshop filters were applied to the orthophoto to make it more homogeneous, to reduce contrast without losing the detail an ortophoto brings compared to base maps, and increasing the contrast of the displayed routes, allowing an accurate but a clear visual exploration of the map at the same time. Administrative or political boundaries (in the case of Madrid not at all related to extent of the urban area) were intentionally avoided in order to highlight the natural, irregular and progressively diffuse boundaries of the cycle track.

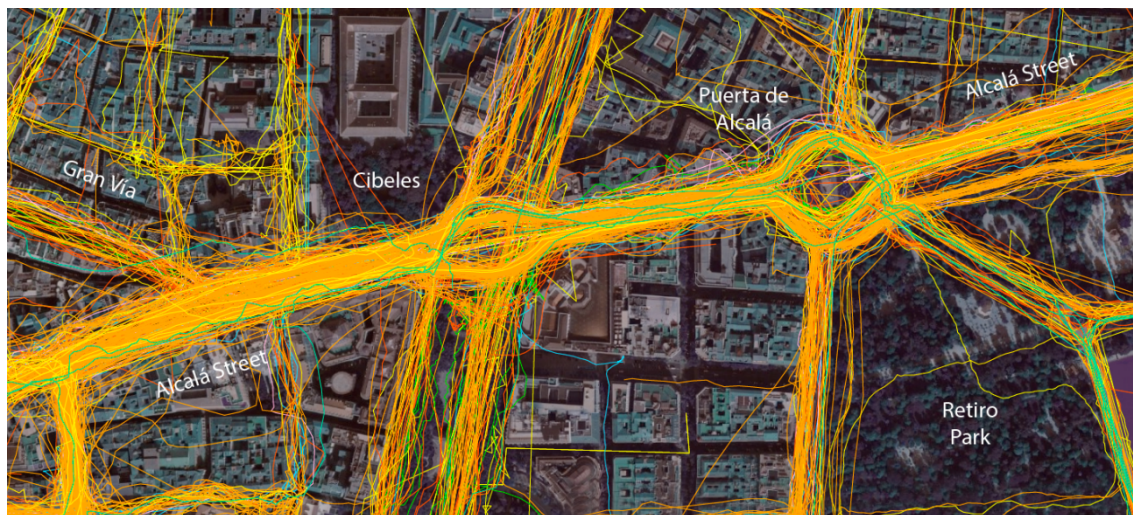


Figure 6. Visualization of casual cyclists' routes

5. Dynamic visualizations

The online visualisation animates the activity of both casual users and bike messengers, shown according to time of day, but collapsed from multiple days (including several journeys by some users) onto one day, to illustrate routes and activity as they vary by time of day. In doing this, we have combined journeys from weekdays and weekends, special events and bank holidays, and journeys taking place in different days and weeks – all of which might have different characters due to different reasons for journeys, weather, seasons and traffic.

The visualisation was produced using the Processing programming language (<http://processing.org>) using code written for the purpose (<https://github.com/martinaustwick/GPS-vis>). The journey data is stored in a mysql database in two separate tables (one each for couriers and casual users); each table contains a series of rows which has a user ID, location and timestamp associated with that location.

In each frame, a query is sent to the couriers table, requesting all data points which were recorded less than 20 seconds after the current timestamp. These points are drawn on the screen with a two increasingly large and transparent ellipses (8 and 16 pixels) drawn at the same location. This is a simple method to produce a “heatmap” effect when multiple data points exist in close proximity at the same or similar timestamps, or when the same locations were recorded at the same time on consecutive days. This process is then repeated for the casual users, but the colour is changed to distinguish these two groups.

In between frames, a partially transparent version of the underlying map is redrawn, meaning that the location of points in previous timestamps remains partially visible, creating the illusion of a continuous path. By decreasing transparency (increasing alpha value), those previous values become more strongly obscured, emphasising the “current” position of cyclists; by increasing transparency (reducing alpha), prior paths are more obvious, at the expense of the most current data. Each frame, a .jpg image is captured, creating some 3,150 images (17.5 hours at 3 images per minute) which when assembled at 30 frames/second results in a movie of under two minutes.

6. Conclusions

The maps presented in this paper visualise the distribution of cyclist flow for the first time in the study area. This visualization reveals mobility patterns regarding the use of bikes for different purposes and disaggregated by different socio-demographic characteristics, allowing us to understand better bike mobility trends and cyclist behaviour. But the maps have played a crucial role behind the visual exploration and the analysis of the outputs. The creation of online maps was central in the design of the initiative. Online maps were dynamic, they represented the evolution of the collective

track over time and let volunteers to visualise their contribution. Furthermore, cyclists were also able to design their routes on the map, so that they became not only a representation tool but an instrument for capturing new data and engaging our community of cyclists. Maps play a central role in innovative participatory projects that bring new possibilities for collecting new data and allowing communities affected by planning changes to directly contribute to those processes. *Madrid Cycle Tracks* has demonstrated new ways to engage community stakeholders as active citizen scientists in helping to shape their city infrastructure, and demonstrated the value of interactive mapmaking and visualisation in building and maintaining these communities.

7. Software

ArcGIS 10.2 was used to process the GPS tracks, to associate the corresponding travel and socio-demographic information and to create the preliminary maps. The online maps were designed and published using ArcGIS Online platform. Madrid Cycle Track online platform is a *WordPress* blog that integrates the online maps by using *Web Maps for WordPress* and the *iframe* plugins. *Adobe Photoshop CS6* was used to apply some filters to the satellite orthophoto and *Adobe Illustrator CS6* to produce the final map. The visualisation was produced using the *Processing* programming language (<http://processing.org>) using MySQL and associated java connectors and the video was edited with *Windows Movie Maker*.

8. Acknowledgements

We would like to express our gratitude to the hundreds of volunteers that contributed to this exercise in collective mapmaking, without who these maps would not have been possible.

9. Map Design

The map consists of four different visualizations illustrating both the casual cyclists and bike messengers' routes collected through the Madrid Cycle Track initiative. At the same time, the casual cyclists general map makes reference to the existing online platform (available at www.huellaciclistademadrid.es), by recreating the interface of the website, translated to English.

10. References

- Barcelona, Ayuntamiento (2014). *Informe de Sostenibilitat Ambiental del Pla de Mobilitat Urbana de Barcelona 2013 - 2018*.
- Ben-aiuva, M., & Morikawa, T. (1990). Estimation of switching models from revealed preferences and stated intentions. *Transport Research A*, 24(6).
- Bernmark, E., Wiktorin, C., Svartengren, M., Lewné, M., & Aberg, S. (2006). Bicycle messengers: energy expenditure and exposure to air pollution. *Ergonomics*, 49(14), 1486–95. doi:10.1080/00140130600708206
- Bradley, M. A., & Bovy, P. H. . (1984). A stated preference analysis of bicyclist route choice. *Planning and Transport Research and Computation*.
- Broach, J., Dill, J., & Gliebe, J. (2011). Bicycle Route Choice Model Developed from Revealed-Preference GPS Data. In *Transportation Research Board 90th Annual Meeting*. Retrieved from <http://trid.trb.org/view.aspx?id=1093304>
- Côme, E., & Latifa, O. (2012). Model-based count series clustering for Bike-sharing system usage mining , a case study with the V ' elib ' system of Paris . *Transportation Research-Part C*, 1–23.
- DOYMO. (2011). *Estudio de seguimiento de impacto de la implantación del PDMC: Eje Prado - Recoletos - Castellana*.
- Fincham, B. (2007). Bicycle messengers: image, identity and community. *Cycling and Society*, 179–196.
- Fleming, S. (2012). *Cycle Space: Architecture & Urban Design in the Age of the Bicycle*.
- Froehlich, J., Neumann, J., & Oliver, N. (2009). Sensing and Predicting the Pulse of the City through Shared Bicycling. In *Twenty-First International Joint Conference on Artificial Intelligence (IJCAI-09)* (pp. 1420–1426).

- Harvey, F. J., & Krizek, K. J. (2007). Commuter Bicyclist Behavior and Facility Disruption. *Transportation Research Board*. Retrieved from <http://trid.trb.org/view.aspx?id=811576>
- Hong, Z., Wei, Z., & Wei, L. (2006). Bicycle-Based Courier and Delivery Services in Beijing. *Transportation Research Board*, (80), 45–51.
- Hood, J., Sall, E., & Charlton, B. (2011). A GPS-based bicycle route choice model for San Francisco, California. *Transportation Letters The International Journal of Transportation Research*, 3(1), 63–75. doi:10.3328/TL.2011.03.01.63-75
- Hopkinson, P., & Wardman, M. (1996). Evaluating the demand for new cycle facilities as divergent as. *Transport Policy*, 3(4), 241–249.
- Kidder, J. L. (2008). Appropriating the city: space, theory, and bike messengers. *Theory and Society*, 38(3), 307–328. doi:10.1007/s11186-008-9079-8
- Kidder, J. L. (2011). *Urban flow: Bike messengers and the city*. Cornell University Press.
- Kroes, E. P., & Sheldon, R. J. (1988). Stated Preference methods. An introduction. *Journal of Transport, Economics and Policy*, 22(1), 11–25.
- Larsen, J., & El-Geneidy, A. (2011). A travel behavior analysis of urban cycling facilities in Montréal, Canada. *Transportation Research Part D: Transport and Environment*, 16(2), 172–177. doi:10.1016/j.trd.2010.07.011
- Madrid, Ayuntamiento (2013). *Plan de movilidad urbana sostenible del distrito centro de madrid*. Madrid. Retrieved from <http://www.madrid.es/UnidadesDescentralizadas/UDCMovilidadTransportes/EspecialInformativo/PMUS/ficheros/RESEJEpmus.pdf>
- Madrid, Ayuntamiento (2014). *Informe de Seguimiento del desarrollo del PDMC (2008-2016)*. Madrid. Retrieved from [http://www.madrid.es/UnidadesDescentralizadas/UDCMovilidadTransportes/BICI/OficinaBici/Informe seguimiento desarrollo PDMC 20140414.pdf](http://www.madrid.es/UnidadesDescentralizadas/UDCMovilidadTransportes/BICI/OficinaBici/Informe%20seguimiento%20desarrollo%20PDMC%20140414.pdf)
- Menghini, G., Carrasco, N., Axhausen, K. W., & Schüssler, N. (2010). Route choice of cyclists in Zurich. *Transportation Research Part A: Policy and Practice*, 44(9), 754–765. doi:10.1016/j.tra.2010.07.008
- Monzon de Cáceres, A., Rondinella, G., & Muñoz López, B. (2011). *Estudio de evaluación de la demanda, impacto social y sobre la movilidad urbana correspondiente al eje de la red básica de vías ciclistas de las calles Atocha - Mayor - Alcalá*.
- Noland, R. B., & Kunreuther, H. (1995). Short-run and long-run policies for increasing bicycle transportation for daily commuter trips. *Transport Policy*, 2(1), 67–79. doi:10.1016/0967-070X(95)93248-W

- O'Brien, O., Cheshire, J., & Batty, M. (2013). Mining bicycle sharing data for generating insights into sustainable transport systems. *Journal of Transport Geography*, 34, 262–273. doi:10.1016/j.jtrangeo.2013.06.007
- Ortúzar, J. D. D., Iacobelli, A., & Valeze, C. (2000). Estimating demand for a cycle-way network. *Transportation Research Part A: Policy and Practice*, 34(5), 353–373. doi:10.1016/S0965-8564(99)00040-3
- Roldán, O. M. G., Díaz, J. R. A., & Mellado, J. J. N. (2013). Cycling mobility accidentability in Spain. *Securitas Vialis*, 4(3), 97–104. doi:10.1007/s12615-012-9060-1
- Tilahun, N. Y., Levinson, D. M., & Krizek, K. J. (2007). Trails, lanes, or traffic: Valuing bicycle facilities with an adaptive stated preference survey. *Transportation Research Part A: Policy and Practice*, 41(4), 287–301. doi:10.1016/j.tra.2006.09.007
- Yang, C., & Mesbah, M. (2013). Route Choice Behaviour of Cyclists by Stated Preference and Revealed Preference. In *Australasian Transport Research Forum*.
- Zaltz Austwick, M., O'Brien, O., Strano, E., & Viana, M. (2013). The structure of spatial networks and communities in bicycle sharing systems. *PloS One*, 8(9), e74685. doi:10.1371/journal.pone.0074685