

Title: Impact of low maternal education on early childhood overweight and obesity in Europe

Supporting Information

Table S1 – Prevalence of Early Childhood Obesity by Mother’s Educational Level in 11 European Birth Cohorts, by Gender..... 1

Figure 1S – Forest Plot of Combined a) RII and b) SII Analyses of Early Childhood Obesity Risk in Europe, by Gender..... 2

Table S1 – Prevalence of Early Childhood Obesity by Mother’s Educational Level in 11 European Birth Cohorts, by Gender

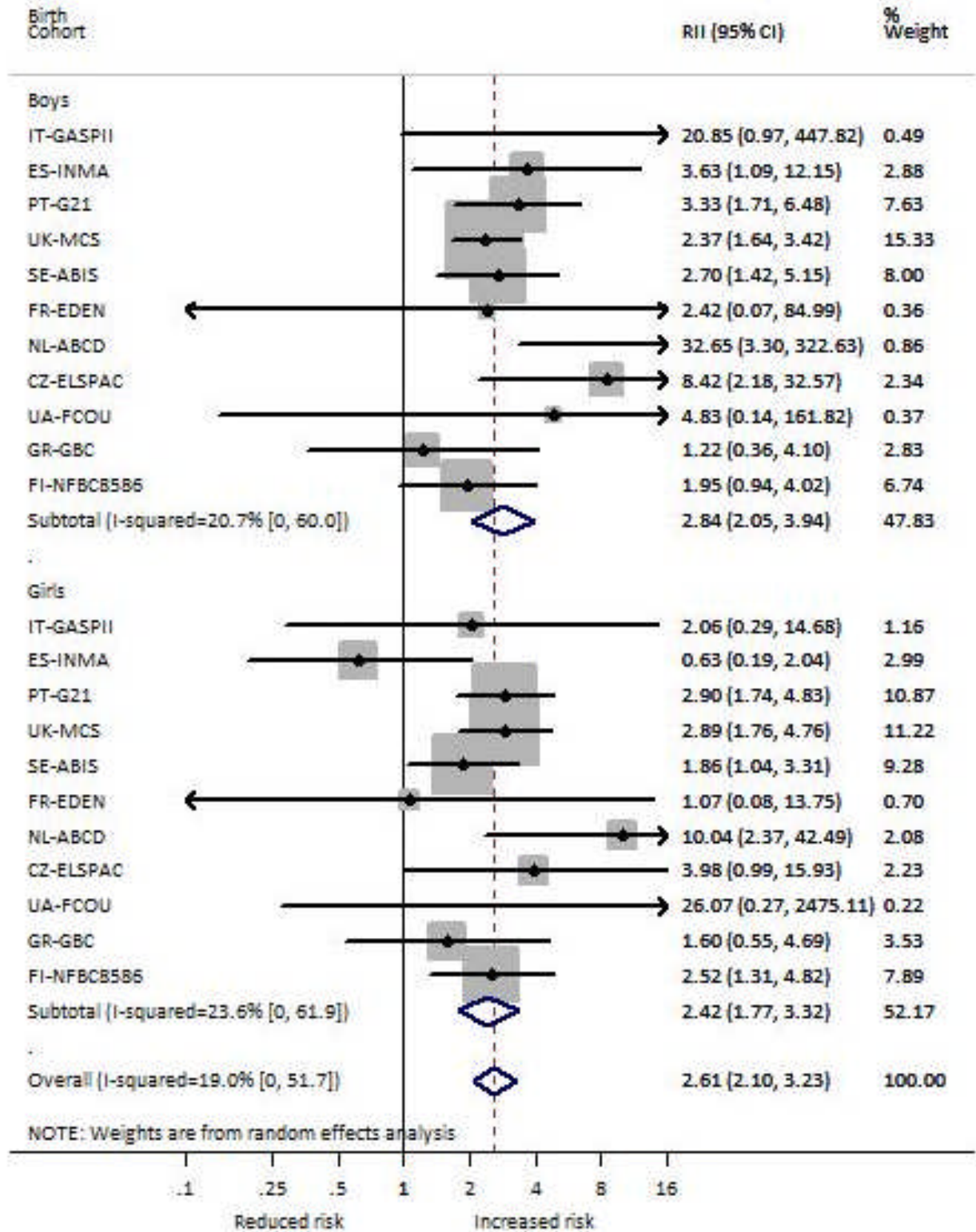
Country ^a	IT	ES	PT	UK	SE	FR	NL	CZ	UA	GR	FI
Birth cohort	GASPII	INMA	G21	MCS	ABIS	EDEN	ABCD	ELSPAC	FCOU	GBC	NFBC8586
Obese, % ^b	4.1	4.8	6.5	5.2	4.3	1.1	1.8	2.5	1.6	5.1	3.9
Boys											
High	2.0	2.8	2.2	3.2	2.7	0.5	0.3	1.1	2.9	2.3	2.3
Medium	1.4	4.7	5.0	5.6	3.5	1.3	1.9	1.9	1.5	5.5	3.5
Low	11.8	6.6	6.3	5.8	5.0	0	4.5	3.3	7.4	5.1	4.0
p for trend ^b	0.030	0.055	<0.001	<0.001	0.003	0.605	<0.001	0.007	0.522	0.501	0.074
Girls											
High	3.1	4.5	4.8	3.9	3.9	1.3	0.9	0.5	0	2.9	3.0
Medium	6.8	6.0	7.2	5.6	5.1	2.2	4.8	3.1	1.2	5.5	4.2
Low	6.1	3.9	10.5	9.2	5.8	0	7.6	3.9	3.7	5.5	6.1
p for trend ^b	0.309	0.502	<0.001	<0.001	0.044	0.765	<0.001	0.002	0.160	0.394	0.005

^a Country abbreviations represent Italy (IT), Spain (ES), Portugal (PT), the United Kingdom (UK), Sweden (SE), France (FR), the Netherlands (NL), the Czech Republic (CZ), Ukraine (UA), Greece (GR) and Finland (FI).

^bThe proportion of obese children in each cohort has been based on the IOTF classification of childhood obesity (equivalent to a BMI of 30 kg/m² at age 18 years).

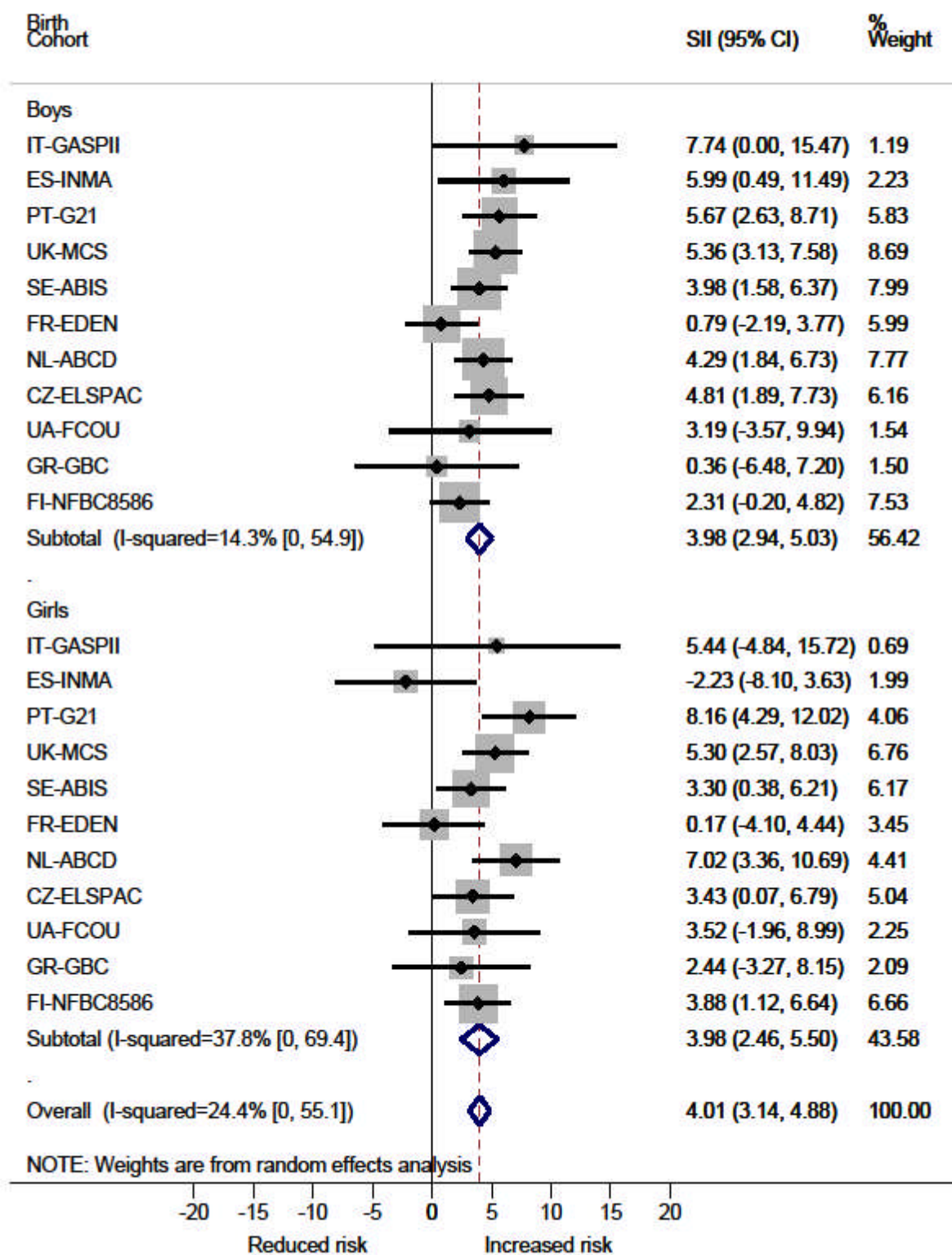
Figure 1S – Forest Plot of Combined a) RII and b) SII Analyses of Early Childhood Obesity Risk in Europe, by Gender

a) Relative Inequalities in Obesity by Low Maternal Education



Note: A score greater than 1 (RII, risk ratio) and 0 (SII, risk difference) indicates inequality between low and high positions of maternal education.

b) Absolute Inequalities in Obesity by Low Maternal Education



Note: A score greater than 1 (RII, risk ratio) and 0 (SII, risk difference) indicates inequality between low and high positions of maternal education.