

RESEARCH ARTICLE

# A novel recombinant antibody specific to full-length stromal derived factor-1 for potential application in biomarker studies

Daniel I. Bromage<sup>‡</sup>, Stasa Taferner<sup>‡</sup>, Mahesh Pillai<sup>‡</sup>, Derek M. Yellon<sup>‡</sup>, Sean M. Davidson<sup>‡\*</sup>

The Hatter Cardiovascular Institute, University College London, London, United Kingdom

<sup>‡</sup> Current address: The Rayne Institute, Lambeth Wing St Thomas' Hospital, London, United Kingdom

\* [s.davidson@ucl.ac.uk](mailto:s.davidson@ucl.ac.uk)



## Abstract

### Background

Stromal derived factor-1 $\alpha$  (SDF-1 $\alpha$ /CXCL12) is a chemokine that is up-regulated in diseases characterised by tissue hypoxia, including myocardial infarction, ischaemic cardiomyopathy and remote ischaemic conditioning (RIC), a technique of cyclical, non-injurious ischaemia applied remote from the heart that protects the heart from lethal ischaemia-reperfusion injury. Accordingly, there is considerable interest in SDF-1 $\alpha$  as a potential biomarker of such conditions. However, SDF-1 $\alpha$  is rapidly degraded and inactivated by dipeptidyl peptidase 4 and other peptidases, and the kinetics of intact SDF-1 $\alpha$  remain unknown.

### Methods & results

To facilitate investigation of full-length SDF-1 $\alpha$  we established an ELISA using a novel recombinant human antibody we developed called HCI.SDF1. HCI.SDF1 is specific to the N-terminal sequence of all isoforms of SDF-1 and has a comparable  $K_D$  to commercially available antibodies. Together with a detection antibody specific to the  $\alpha$ -isoform, HCI.SDF1 was used to specifically quantify full-length SDF-1 $\alpha$  in blood for the first time. Using RIC applied to the hind limb of Sprague-Dawley rats or the arms of healthy human volunteers, we demonstrate an increase in SDF-1 $\alpha$  using a commercially available antibody, as previously reported, but an unexpected decrease in full-length SDF-1 $\alpha$  after RIC in both species.

### Conclusions

We report for the first time the development of a novel recombinant antibody specific to full-length SDF-1. Applied to RIC, we demonstrate a significant decrease in SDF-1 $\alpha$  that is at odds with the literature and suggests a need to investigate the kinetics of full-length SDF-1 $\alpha$  in conditions characterised by tissue hypoxia.

## OPEN ACCESS

**Citation:** Bromage DI, Taferner S, Pillai M, Yellon DM, Davidson SM (2017) A novel recombinant antibody specific to full-length stromal derived factor-1 for potential application in biomarker studies. PLoS ONE 12(4): e0174447. <https://doi.org/10.1371/journal.pone.0174447>

**Editor:** Shree Ram Singh, National Cancer Institute, UNITED STATES

**Received:** January 10, 2017

**Accepted:** March 9, 2017

**Published:** April 5, 2017

**Copyright:** © 2017 Bromage et al. This is an open access article distributed under the terms of the [Creative Commons Attribution License](https://creativecommons.org/licenses/by/4.0/), which permits unrestricted use, distribution, and reproduction in any medium, provided the original author and source are credited.

**Data Availability Statement:** All relevant data are within the paper and its Supporting Information files.

**Funding:** This work was supported by grants from the British Heart Foundation (BHF PG/15/52/31598) and National Institute of Health Research University College London Hospital Biomedical Research Council (BRC233/CM/SD/101320). Dr. Daniel Bromage is an MRC Clinical Research Training Fellow (grant MR/L002043/1). This work was undertaken at UCLH/UCL, who received a

proportion of funding from the Department of Health's NIHR Biomedical Research Centres funding scheme.

**Competing interests:** The authors have declared that no competing interests exist.

## Introduction

Stromal derived factor-1 $\alpha$  (SDF-1 $\alpha$ /CXCL12) is a CXC chemokine that is expressed in several tissues in response to hypoxia, via up-regulation of hypoxia inducible factor-1 $\alpha$  (HIF-1 $\alpha$ ). [1–5] For example, SDF-1 $\alpha$  is up-regulated in experimental and clinical studies of acute myocardial infarction (MI), wherein it is thought to mitigate adverse ventricular remodelling. Its mechanism of action is reportedly as a chemo-attractant for a variety of cell types expressing its cognate G protein-coupled receptor, CXCR4, including mesenchymal stem cells (MSCs), adipose-derived regenerative cells, c-kit<sup>+</sup> endogenous cardiac stem cells and T lymphocytes, [6–9] which subsequently have beneficial paracrine effects. [10] It has also been implicated in acute cardioprotection via its binding to myocardial CXCR4 and subsequent activation of the reperfusion injury salvage kinase pathway. [11, 12]

Consequent upon this mechanism, SDF-1 $\alpha$  has been evaluated as a potential biomarker in several cardiovascular contexts, including both as a predictor of incident cardiovascular events and of adverse outcome. Specifically, studies have investigated SDF-1 $\alpha$  in MI with and without ST segment elevation, [13–16] cardiac surgery, [17] heart failure, [18] patients at increased cardiovascular risk, [19] and in relation to human heart transplantation. [20] Similarly, remote ischaemic conditioning (RIC), a technique of cyclical, non-injurious ischaemia applied to an organ or tissue remote from the heart, has been reported by us and others to increase SDF-1 $\alpha$  as measured using commercially available ELISA kits (typically from R&D Systems, UK). [12]

SDF-1 is cleaved by several peptidases, including leukocyte elastase, matrix metalloproteinases 1, 2, 3, 9, 13 and 14, and cathepsin G. [21] However, dipeptidyl peptidase 4 (DPP4), which cleaves SDF-1 at its position 2 proline residue, has been shown to be predominantly responsible and is the focus here. [22] Cleavage reduces the affinity of SDF-1 for CXCR4, rendering it inactive. [23] Currently, commercial antibodies have different affinities towards intact SDF-1 $\alpha$  (consisting of amino acids 1–67) and DPP4-truncated SDF-1 $\alpha$  (amino acids 3–67), [21, 24] and the kinetics of full-length, active SDF-1 $\alpha$  in response to tissue hypoxia are unknown (Fig 1). Analysis is complicated by the absence of a method to specifically quantify active SDF-1 $\alpha$  in plasma. We therefore aimed to develop a method to investigate intact SDF-1 $\alpha$ , using RIC as an example.

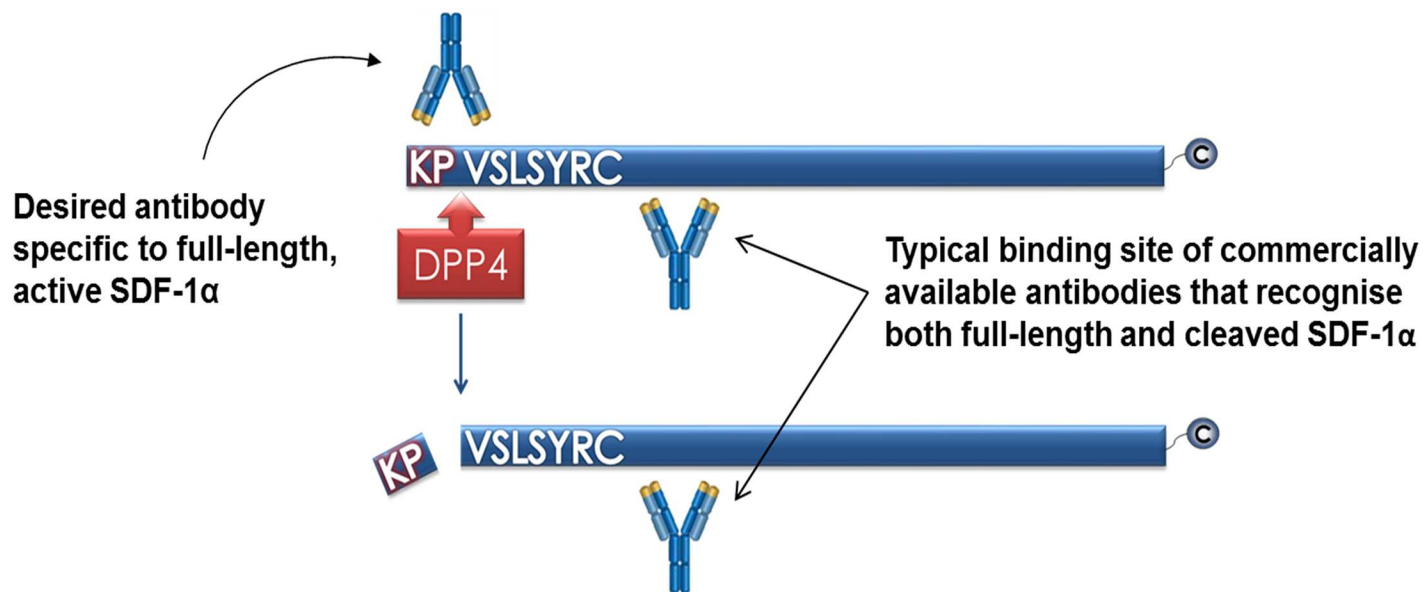
## Materials & methods

### Ethics statement

All procedures were performed with Local Research Ethics Committee approval at the Hatter Cardiovascular Institute, University College London (12/0448). Experiments were conducted according to the principles expressed in the Declaration of Helsinki. Volunteers gave informed consent. All use of animals was in accordance with the United Kingdom (Scientific Procedures) Act 1986. The experiments were prospectively approved by the UK Home Office animal research ethics committee under Project Licence number PPL 70/8556, (“Protection of the Ischaemic and Reperfused Myocardium”) issued to Prof. Derek Yellon in 2015. Adult male Sprague-Dawley rats weighing 200–250 g (Harlan Laboratories, UK) were euthanized by terminal anaesthesia with 100 mg/kg pentobarbitone sodium administered IP.

### Antibody characterisation

A custom human IgG1 bivalent mini-antibody, with embedded FLAG octapeptide and polyhistidine (His6) tags, was identified from the HuCAL<sup>®</sup> (Human Combinatorial Antibody Library) phage-display library containing several billion, distinct, fully human antibodies. [25, 26] The library was screened using positive selection for binding to the peptide



**Fig 1. Representation of binding sites of HCl.SDF1 $\alpha$  and commercial antibodies on full-length SDF-1 $\alpha$  and SDF-1 $\alpha$  after cleavage of its N-terminal di-peptide by DPP4.**

<https://doi.org/10.1371/journal.pone.0174447.g001>

KPVLSYR-Ttds-C derived from the N-terminus of full-length SDF-1(1–8) and negative selection for binding to the peptide VLSYR-Ttds-C derived from the N-terminus of cleaved SDF-1(3–8) (AbD Serotec, UK). These sequences are common to all isoforms of SDF-1 (alpha-zeta), although SDF-1 $\alpha$  is predominant.[27] From the 12 initially identified clones, HCl.SDF1 was identified as having the most specific and robust binding to full-length SDF-1 without any binding to cleaved SDF-1 or to glucagon-like peptide-1 (GLP-1), an unrelated protein that is also cleaved by DPP4.

### HCl.SDF1 kinetics

To ascertain the association and dissociation kinetics of the antibody, a label-free sensor system (Octet Red, ForteBio, UK) was used with SDF-1 $\alpha$ , according to the manufacturer's instructions. HCl.SDF1 was diluted to 5  $\mu\text{g/ml}$  in 0.1% BSA-PBS supplemented with 0.02% Tween<sup>®</sup>20 (Sigma-Aldrich, UK). The antibody was immobilised on Amine Reactive Second-Generation (AR2G) Biosensors (ForteBio, UK) at 30°C for 180 s before being dipped into the same buffer containing a range of concentrations of SDF-1 $\alpha$  (1  $\mu\text{g/ml}$  with serial twofold dilutions) for 600 s. The sensors were then returned to the buffer for the dissociation reaction, for 600 s. For each concentration of SDF-1 $\alpha$ , the kinetic curves for association and dissociation were obtained and used to calculate a global  $K_D$  with the analysis programme provided by the manufacturer (Octet DataAnalysis v9.0.0.12).

### HCl.SDF1 ELISA

HCl.SDF1 was optimised as the capture antibody in a sandwich ELISA for measuring full-length, un-cleaved SDF-1 $\alpha$ , with detection by a biotinylated polyclonal goat IgG against the alpha isoform of human and mouse SDF-1 (BAF310, R&D Systems, UK) and streptavidin-HRP (R&D Systems, UK). A standard curve was generated using recombinant human (rh) SDF-1 $\alpha$  (R&D Systems, UK) diluted in BUF037A, a diluent with mammalian serum proteins to mimic the target analyte recovery profile of human plasma (AbD Serotec, UK). Rat SDF-1 $\alpha$

is 97% identical to the human protein overall, and at the N-terminus is 100% identical to both human and mouse SDF-1 $\alpha$  (Fig 2). The optical density of each well was measured using a 96 well microplate reader (FLUOstar Omega, BMG Labtech, Germany) set to 450 nm. All analyses, including samples and standards, were performed in triplicate to minimise intra-assay variability, and baseline corrected.

In addition, to permit comparison of our novel assay with commercially available antibodies, MAB350, a monoclonal mouse IgG against mouse and human SDF-1 $\alpha$ , was substituted as the detection antibody using the same assay protocol. This antibody was selected based on the capture antibody used in a commercially available and widely used ELISA for SDF-1 $\alpha$  (Quantikine<sup>®</sup> ELISA for Human CXCL12, R&D Systems, UK).

To ascertain the sensitivity of each respective assay to intact and cleaved forms of SDF-1 $\alpha$ , human platelet-free plasma was spiked with 3,000 pg/ml intact rhSDF-1 $\alpha$  and incubated with 800  $\mu$ M rhDPP4 (R&D Systems, UK) in Tris buffer for 2 h at 37°C prior to termination of DPP4-mediated cleavage with 100 mM Sitagliptin (Merck, US) and mixing known proportions with intact SDF-1 $\alpha$ .

## Western blotting

Western blot analysis was performed on samples of rhSDF-1 $\alpha$  (1–50 ng) denatured in Laemmli gel sample buffer. HCL.SDF1 was used at a dilution of 1:400 and detected using 1:5000 goat anti-human IgG Fab-FITC (AbD Serotec, Oxon, UK).

## Animal experiments

Adult male Sprague-Dawley rats weighing 200–250 g (Harlan Laboratories, UK) were anaesthetised with 100 mg/kg intra-peritoneal pentobarbitone sodium. Animals underwent orotracheal intubation and ventilation using allometrically adjusted tidal volume and ventilation rates, and supplementary oxygen. Core body temperature was monitored via a rectal temperature sensor and maintained at 36.5 $\pm$ 0.5°C by adjustment of a homeothermic heat mat (Kent Scientific, USA). ECG was recorded throughout using PowerLab 4/25 and Animal Bio Amp coupled to Chart 7 (AD Instruments, UK).

## Remote ischaemic conditioning protocol

Animals were randomly assigned to either control or RIC groups. RIC was applied using an inflatable cuff (Hokanson, USA) around the right hind limb, which was inflated to 200 mmHg using a manual sphygmomanometer. 3 cycles of 5 min ischaemia and 5 min reperfusion was applied (Fig 3). Ischaemia was indicated by cyanosis of the right hind limb and confirmed by global flow assessment with a high resolution laser Doppler imager (Moor Instruments, UK). Representative images are shown in Fig 4. Control animals underwent a sham procedure, including identical anaesthetic time. Samples were collected either immediately after RIC or 1 h later (Fig 3), as described below.

## Blood collection for SDF-1 $\alpha$ and DPP4 measurement

4.5 ml of blood was collected on ice into tubes containing 250  $\mu$ l of 1 mM Sitagliptin to inhibit DPP4 and prevent degradation of intact SDF-1 $\alpha$  during sample preparation,[21] and 0.5 ml 10x citrate buffer to prevent coagulation. Samples for DPP4 measurement were collected without Sitagliptin. Aspiration of blood was performed by right ventricular puncture using a wide-bore 19G x 1.5" needle to avoid platelet activation and subsequent release of SDF-1 $\alpha$ . Samples were immediately centrifuged at 1,600 g for 20 min then 10,000 g for 30 min to obtain platelet-



**Fig 2. SDF-1 $\alpha$  sequence according to species.** Alignment of SDF-1 $\alpha$  from humans, rats and mice demonstrates the N-terminal sequence is highly conserved between species. Accession numbers NP\_001171605.1, NP\_001029055.1 and NP\_001012495.1 were used, respectively. Sequences in red represent the sequence of interest used to generate HCl.SDF1. Blue residues represent differences in the primary sequence between species; note that none of these are at the N-terminal end.

<https://doi.org/10.1371/journal.pone.0174447.g002>

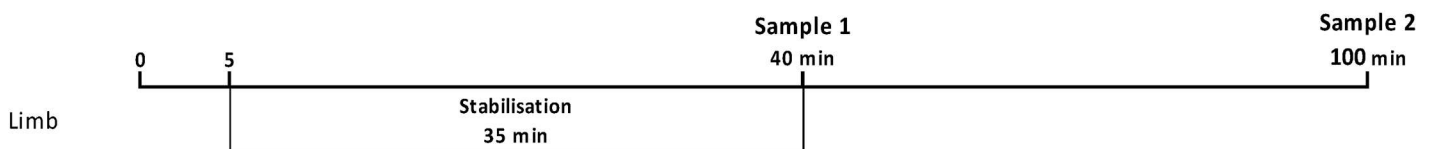
free plasma and frozen at  $-80^{\circ}\text{C}$ . After all experimental samples were collected they were defrosted at room temperature and assayed immediately.

To investigate the effect of sample preparation on the measurement of SDF-1 $\alpha$  with our novel assay, separate blood samples were collected in the same way but only centrifuged at 1,600 g for 20 min to obtain unfractionated plasma. Further samples were allowed to clot at room temperature for 20 min before centrifuging at 1600 g for 10 min to obtain serum.

### Human experiments

Six healthy male volunteers participated in the study after giving written informed consent. None were taking any regular medication. Each volunteer was subjected to RIC, consisting of 3 cycles of 5 min right upper limb ischaemia by inflation of a manual sphygmomanometer to a pressure of 200 mmHg. Ischaemia was confirmed by absence of a pulse, and presence of pallor

#### A. Control

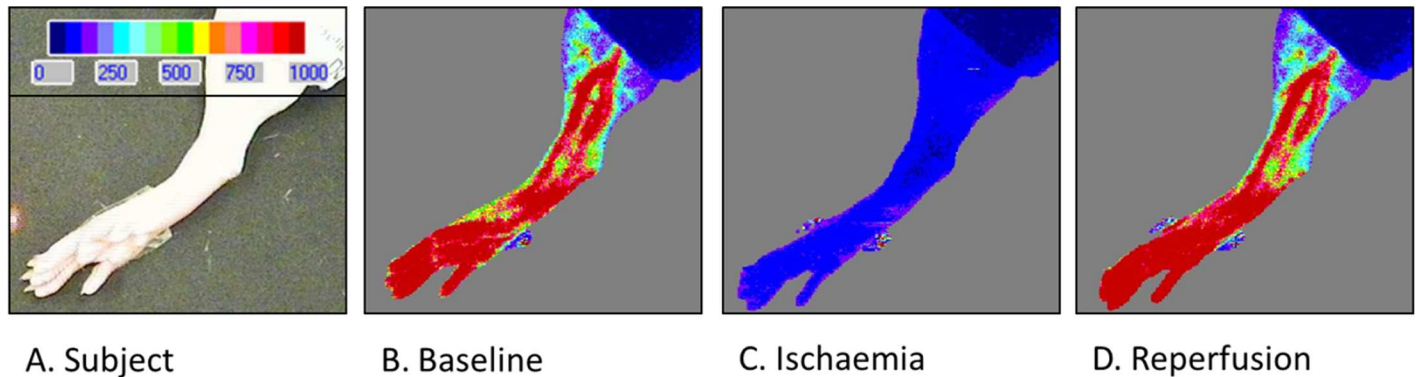


#### B. RIC



**Fig 3. *In vivo* rat protocols.** Remote ischaemic conditioning (RIC) was applied to the rat hind limb in the following groups: A) Control: 35 min stabilisation; B) RIC: 5 min stabilisation, 3 cycles of 5 min ischemia and 5 min reperfusion. Blood samples were taken either immediately after RIC (sample 1) or 60 min thereafter (sample 2).

<https://doi.org/10.1371/journal.pone.0174447.g003>



**Fig 4. Laser Doppler blood flow assessment in the subject hind limb during RIC and reperfusion.** Panel A shows a colour photograph of the subject hind limb. Panel B demonstrates complete cessation of blood flow during RIC ischaemia (C) and restoration after reperfusion (D).

<https://doi.org/10.1371/journal.pone.0174447.g004>

and paraesthesia. Samples were collected into tubes containing Sitagliptin either immediately after RIC or 1 hour later via ipsilateral antecubital fossa venepuncture (Fig 3). Experiments were all conducted at the same time of day.

### Statistical methods

On the basis of our previous findings using an *in vivo* model of RIC, we calculated that a 20% increase in plasma SDF-1 $\alpha$  at a significance level of 0.05 and a power of 0.8 would require 4 animals in each group.[28] Results of animal experiments were compared using the Student t test for 2 groups of continuous variables and analysis of variance (ANOVA) and Tukey's Multiple Comparison Test for 3 or more groups. Data is presented as mean  $\pm$  SEM. Statistical significance was reported if  $P < 0.05$  using the following nomenclature: \* $P < 0.05$ , \*\* $P < 0.01$  and \*\*\* $P < 0.001$ . Results where  $P > 0.05$  were reported as non-significant (NS). Sample values were baseline corrected and linear (HCI.SDF1) or nonlinear using  $\log(\text{agonist})$  versus response (MAB350) regression of standard values was performed with GraphPad Prism<sup>®</sup> version 5.00 for Windows (California, USA).

### Results

#### Identification and characterisation of an ELISA for HCI.SDF1a

A custom, human, monoclonal IgG1 antibody was identified from the HuCAL<sup>®</sup> library, which contains more than 45 billion functional human antibody specificities.[25, 26] The phagemid library was screened for binding to a peptide derived from full-length SDF-1 without binding to a peptide derived from cleaved SDF-1. HCI.SDF1 was the clone that best satisfied these criteria and was optimised as the capture antibody in a sandwich ELISA for full-length SDF-1 $\alpha$ . The intra- and inter-assay variations of our ELISA for intact SDF-1 $\alpha$  were 2.7% and 7.1% respectively, which are below the recommended maximum threshold of 10%. The limit of detection (LoD) and limit of quantification (LoQ) in platelet-free plasma were 156 pg/ml and 312 pg/ml, respectively.

#### The antibody HCI.SDF1 has comparable binding kinetics to MAB350

The equilibrium dissociation constant ( $K_D$ ) between the recombinant HCI.SDF1 antibody and SDF-1 $\alpha$  was measured using the Octet Red label-free sensor system. Concentrations of 0.98 to 125 nM SDF-1 $\alpha$  were measured in parallel wells of a 96 well plate. Curve fits were generated

and a  $K_D$  calculated for both HCl.SDF1 ( $1.4 \times 10^{-8} \pm 3.5 \times 10^{-9}$  M) and MAB350 ( $8.0 \times 10^{-8} \pm 7.0 \times 10^{-9}$  M), which were not significantly different ( $n = 3$  independent experiments), and were within the typical range of affinities of monoclonal antibodies. A representative image from the binding experiment is shown in Fig 5.

### HCl.SDF1a is more sensitive to intact SDF-1 $\alpha$

By assaying different proportions of intact and cleaved SDF-1 $\alpha$  we were able to demonstrate that an ELISA using HCl.SDF1 as the capture antibody is specific for full-length SDF-1 $\alpha$ , whereas commercial assays report a combination of intact and cleaved SDF-1 $\alpha$  (Fig 6), making the results with commercial assays difficult to interpret.

Further analysis demonstrated that HCl.SDF1 is able to detect denatured SDF-1 $\alpha$  and is therefore suitable for Western blot applications (Fig 7).

### Serum preparation dramatically increases SDF-1 $\alpha$ levels

The effect of blood sample preparation on SDF-1 $\alpha$  levels was determined using rat platelet-free plasma compared to serum and plasma from which platelets had not been removed (unfractionated plasma). SDF-1 $\alpha$  levels were significantly higher in serum samples than either platelet-free or unfractionated plasma samples, when measured by ELISA with either HCl.SDF1 ( $5000 \pm 200$  pg/ml,  $1150 \pm 160$  pg/ml &  $1140 \pm 190$  pg/ml, respectively,  $n = 3-7$ ,  $P < 0.001$ ) or a commercial assay ( $4400 \pm 300$  pg/ml,  $490 \pm 30$  pg/ml &  $1150 \pm 140$  pg/ml, respectively,  $n = 3-4$ ,  $P < 0.001$ ; Fig 8). When serum samples were taken from animals with and without RIC, there was no significant difference between control and RIC groups. Therefore, platelet-free plasma samples were used in all subsequent analyses.

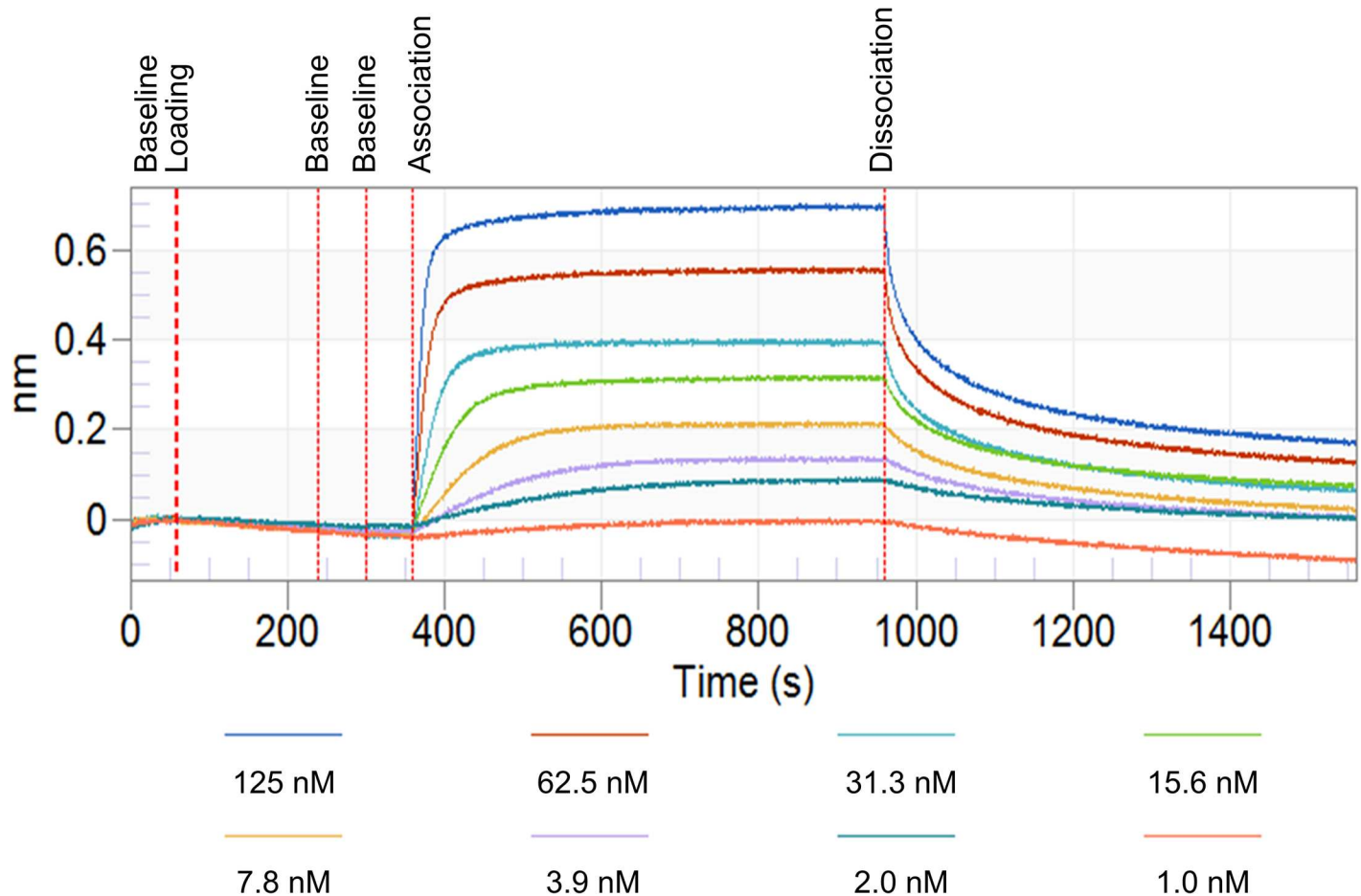
### Plasma levels of full-length SDF-1 $\alpha$ decrease after RIC

An ELISA using MAB350 (R&D Systems, UK), a monoclonal mouse IgG against mouse and human SDF-1 $\alpha$  that is used in most reported studies of SDF-1 $\alpha$  replicated our previously reported finding that SDF-1 $\alpha$  is significantly increased by an RIC stimulus in rats,[12] and this difference was still present 1 h after the RIC protocol (Fig 9). However, when measured using HCl.SDF1, levels of full-length SDF-1 $\alpha$  were unexpectedly found to significantly decrease immediately after RIC ( $670 \pm 130$  pg/ml vs.  $1150 \pm 160$  pg/ml,  $n = 7-9$ ,  $P < 0.05$ ) although they normalised by 1 h ( $910 \pm 110$  pg/ml vs.  $950 \pm 90$  pg/ml,  $n = 4$ ,  $P = \text{NS}$ ).

To confirm our findings in humans, we repeated the RIC protocol on the upper limb of 6 healthy human volunteers and, despite significant inter-individual variability, found a similar trend towards a reduction in active SDF-1 $\alpha$  (pre-RIC  $380.0 \pm 154.9$  pg/ml; 0 min  $337.5 \pm 148.3$  pg/ml; 60 min  $329.8 \pm 148.7$  pg/ml,  $P$  for trend  $< 0.05$ , Fig 10).

## Discussion

Several studies have associated increased SDF-1 $\alpha$  with both increased risk of incident cardiovascular events and subsequent adverse outcome. For example, in Framingham Heart Study patients, circulating SDF-1 $\alpha$  was significantly associated with both new-onset heart failure and all-cause mortality in a multi-variable regression model.[19] SDF-1 $\alpha$  was not associated with MI in this study, although genome-wide association studies (GWAS) have identified SDF-1 $\alpha$  as a risk locus for both coronary artery disease and MI.[29] Furthermore, in patients with chronic kidney disease, who are at high risk for cardiovascular events, SDF-1 $\alpha$  was significantly associated with MI and all-cause mortality.[30] Circulating SDF-1 $\alpha$  has also been associated with worse left ventricular (LV) function in patients hospitalised with heart failure.[18]



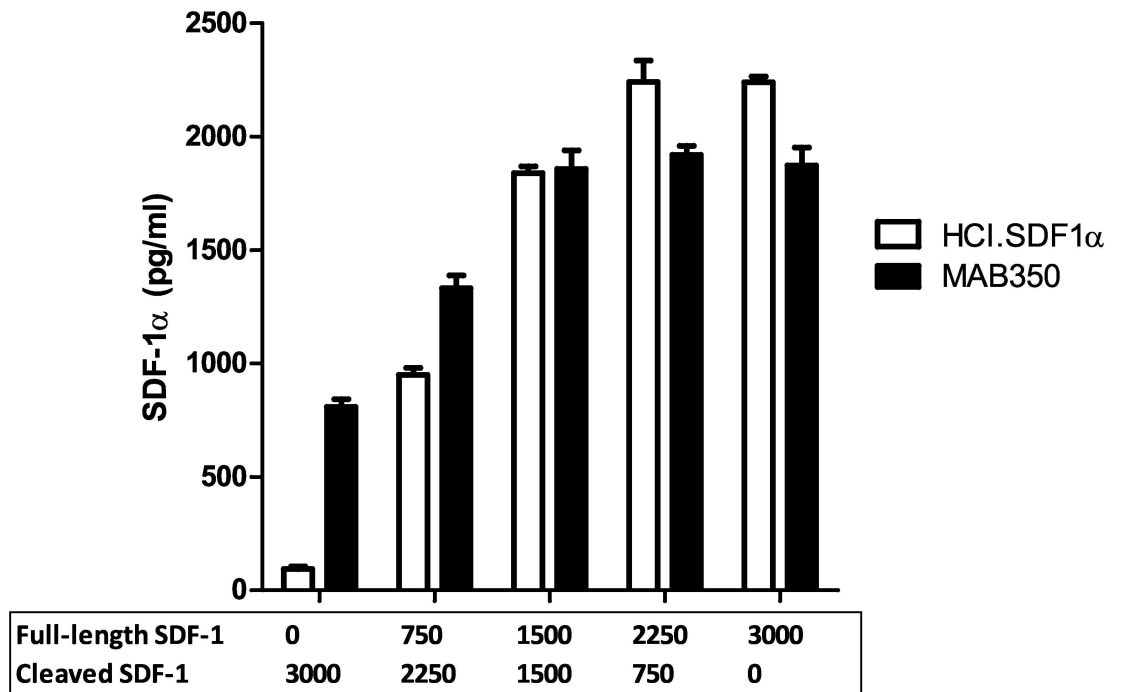
**Fig 5. Representative HCl.SDF1 and MAB350 binding kinetics data.** Representative data obtained from label-free sensor evaluation of HCl.SDF1 and MAB350 with Amine Reactive Second-Generation (AR2G) Biosensors.

<https://doi.org/10.1371/journal.pone.0174447.g005>

With respect to the prediction of adverse sequelae after cardiovascular events, elevated SDF-1 $\alpha$  has been reported after MI in several studies. [13–16] In ST segment elevation MI (STEMI), higher SDF-1 $\alpha$  levels predicted worse LV performance, Killip score and 30 day mortality.[13] SDF-1 $\alpha$  levels have also been used to predict adverse events in stable patients with a history of MI [15] and patients with non-STEMI, where SDF-1 $\alpha$  levels were an independent predictor of death, MI and heart failure.[16]

Several studies have recorded increased SDF-1 $\alpha$  following RIC, as measured with commercially available ELISA kits. For example, Jiang *et al.* demonstrated increased serum and myocardial SDF-1 $\alpha$  after a remote ischaemic postconditioning protocol consisting of clamping the infra-renal abdominal aorta for 4 cycles of 5 min ischaemia and 5 min reperfusion. SDF-1 $\alpha$  levels peaked at 1 hour, with an  $80\pm 5\%$  increase ( $P < 0.001$ ) compared to control (sham surgery) animals.[31] Interestingly, they measured SDF-1 $\alpha$  in serum samples, which our findings indicate would result in artefactually high levels of SDF-1 $\alpha$  compared to plasma. In a similar experiment, Kamota *et al.* conferred RIC using repetitive occlusion of the abdominal aorta in mice prior to ischaemia-reperfusion of the left anterior descending (LAD) coronary artery territory. Using a standard ELISA, they measured 4-fold levels of SDF-1 $\alpha$  after 1 hour in platelet-poor plasma samples.[32] Our group also showed that circulating SDF-1 $\alpha$  levels were altered





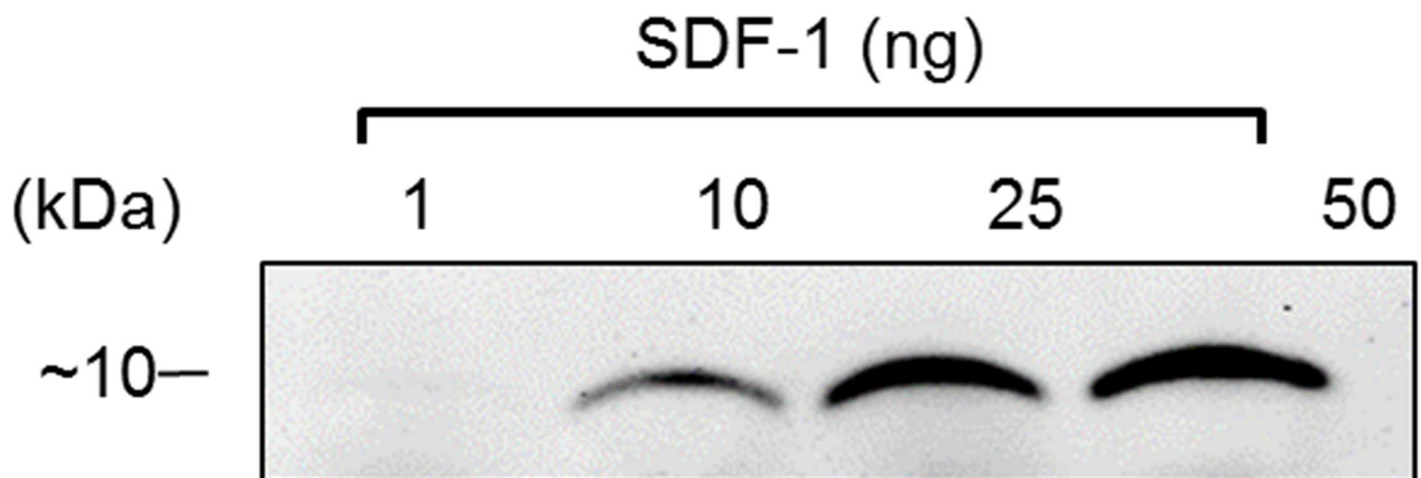
Proportion of cleaved/intact SDF-1α (pg/ml)

**Fig 6. ELISA for intact and cleaved SDF-1α using HCl.SDF1 and MAB350.** An ELISA assay demonstrates that HCl.SDF1 is specific for active SDF-1α, with very low signal in the absence of intact SDF-1α, whereas there is substantial residual signal in the absence of intact SDF-1α when using the commercial antibody MAB350.

<https://doi.org/10.1371/journal.pone.0174447.g006>

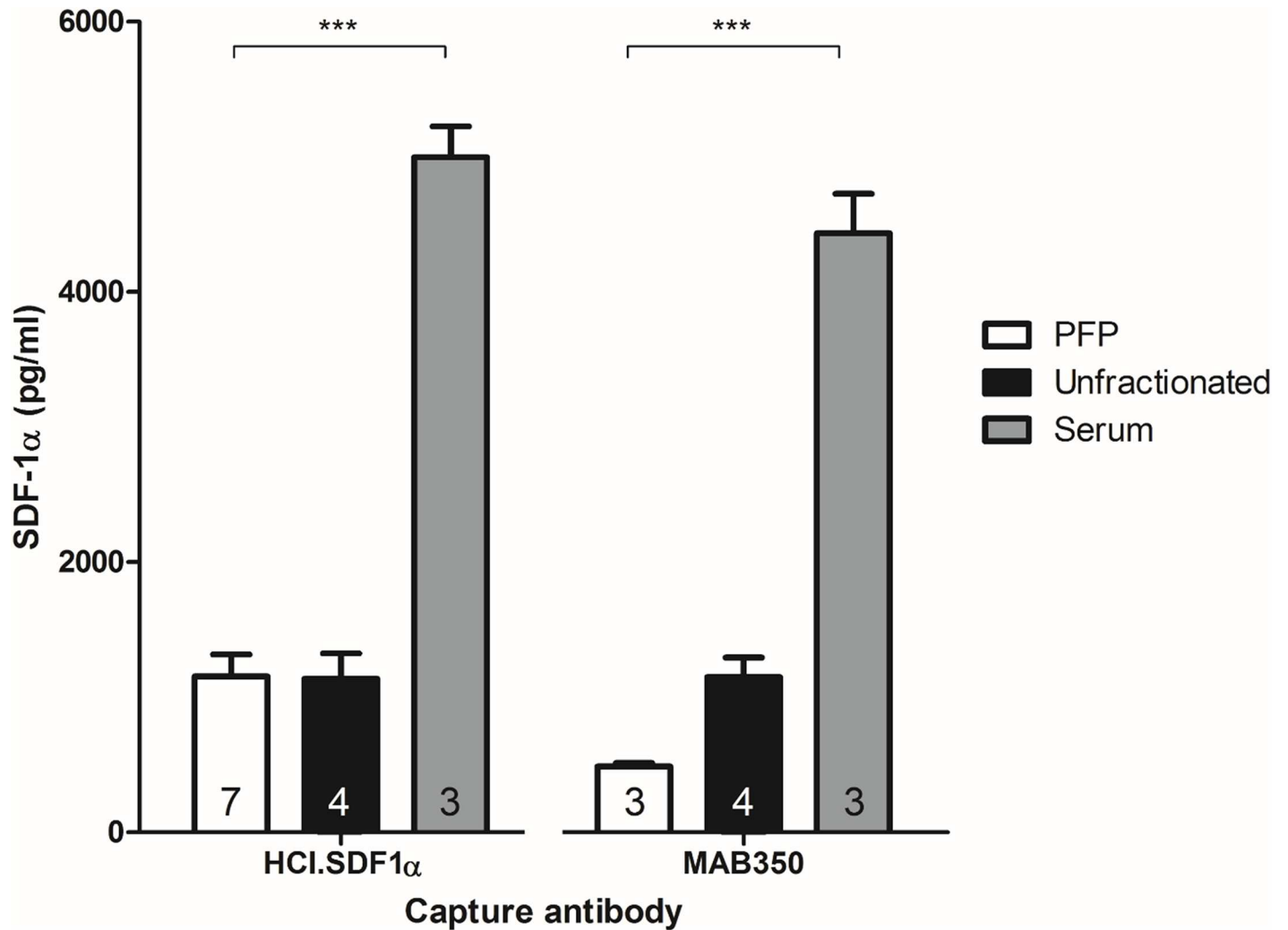
in rats subjected to 3 cycles of 5 min hind-limb ischaemia and reperfusion, increasing by 50% in platelet-free plasma samples to a peak of 890±70 pg/ml.[12]

However, not all studies have reported increased SDF-1α in conditions characterised by tissue hypoxia. Fortunato *et al.* showed a reduction in serum SDF-1α in patients after MI,



**Fig 7. HCl.SDF1 used for Western blotting.** Western blots demonstrated a concentration-signal relationship when HCl.SDF1 was used to detect varying concentrations of rhSDF-1α.

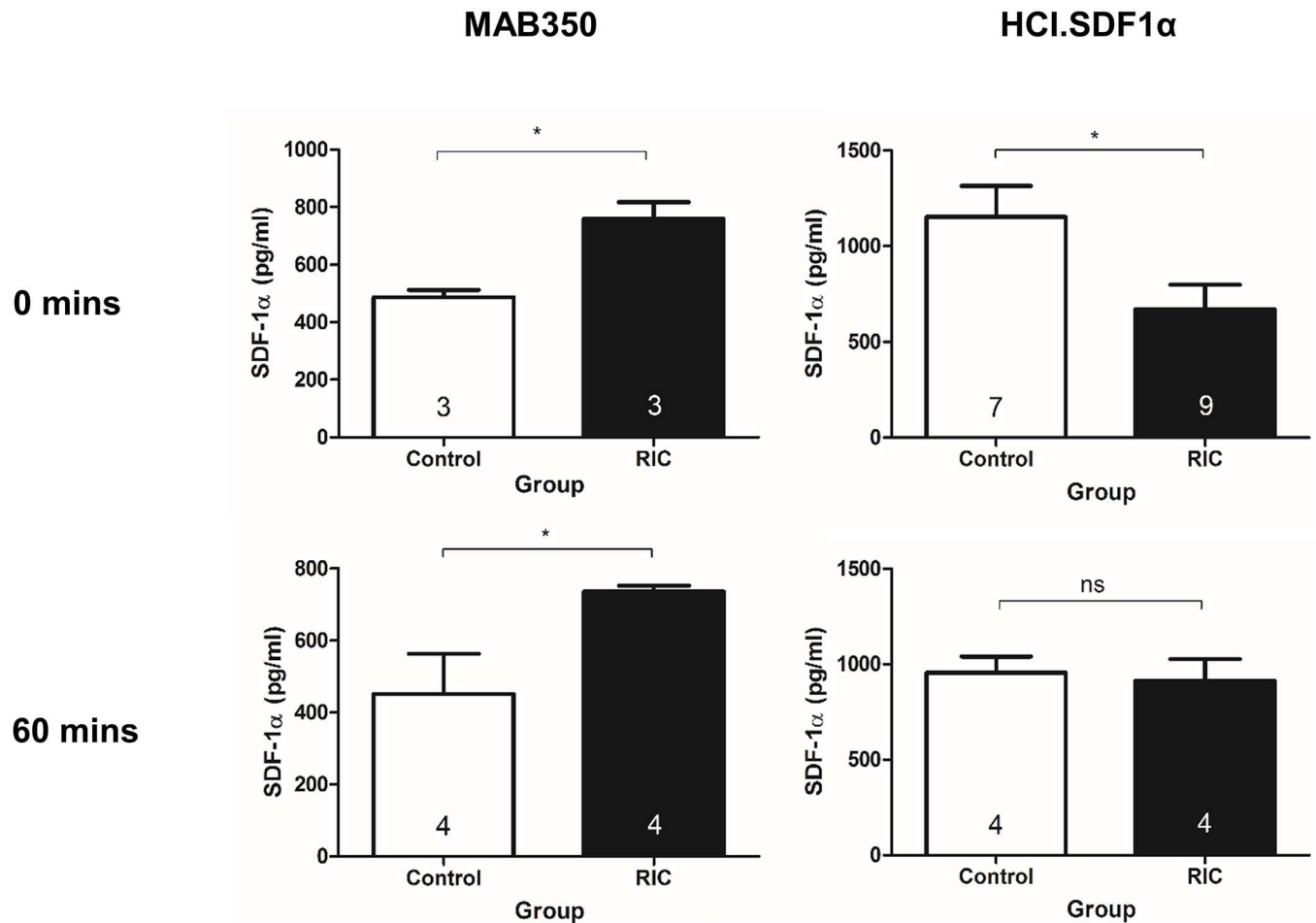
<https://doi.org/10.1371/journal.pone.0174447.g007>



**Fig 8. The effect of sample type on SDF-1α concentration.** Serum samples, collected by allowing whole blood to clot for 10 min prior to centrifuging to remove the clot, had significantly more active SDF-1α than either platelet-free (PFP) or unfractionated plasma samples that were collected into a citrated tube and prepared by differential centrifugation, when measured using either capture antibody as indicated.

<https://doi.org/10.1371/journal.pone.0174447.g008>

although higher levels were associated with more adverse events,[14] and Damas *et al.* demonstrated a significant reduction of plasma SDF-1α in patients with stable and unstable angina compared to healthy controls.[33] The investigation of SDF-1α as a biomarker is confounded because the aforementioned studies use the commercially available ELISA from R&D Systems that employs the monoclonal mouse IgG, MAB350. The present study shows that this antibody has different affinity towards full-length and DPP4-cleaved SDF-1α. Baerts *et al.* also observed a significant reduction in immunoreactivity after they measured DPP4-cleaved, recombinant SDF-1α using several different commercial ELISA kits (including R&D Systems, Raybiotech and Peprotech).[11] We observed a partial, but incomplete, loss of signal in an ELISA assay using MAB350 following complete cleavage of SDF-1α with DPP4. This might be explained by altered binding affinity of MAB350 or of the polyclonal detection antibody (BAF310) used in this sandwich ELISA format after cleavage of SDF-1α. As loss of the N-terminal Lys<sup>1</sup> is known to confer a complete loss of bioreactivity,[23] the incomplete detection of SDF-1α by



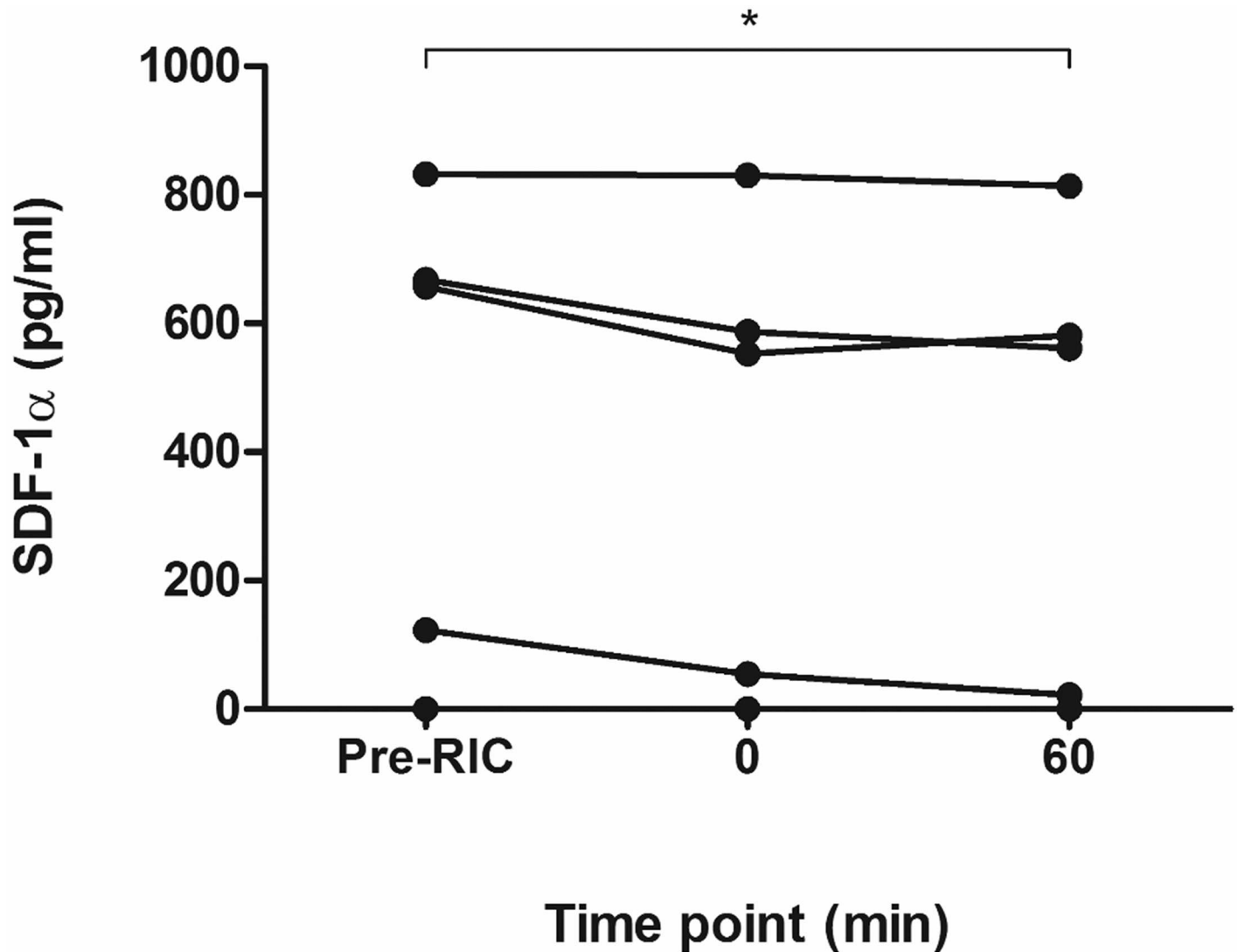
**Fig 9. Effect of RIC on intact and cleaved SDF-1α.** Following RIC, ELISA using commercial antibodies detects an increase in plasma SDF-1α levels whereas HCl.SDF1α, which is more specific for full-length SDF-1α, measures a decrease immediately after RIC that is restored to baseline by 1 h.

<https://doi.org/10.1371/journal.pone.0174447.g009>

commercial antibodies confounds interpretation of both basic and clinical studies of SDF-1α that have used commercially available ELISA assays.

Accurate measurement is crucial given the growing interest in SDF-1α both as a potential biomarker and therapy for ischaemic cardiomyopathy.[34–38] Baerts *et al.* recognised that *ex vivo* truncation of SDF-1α significantly affects plasma SDF-1α measurement.[21] Using tubes treated with DPP4 inhibitors they collected plasma samples from patients with heart failure and associated SDF-1α level with heart failure severity, according to ejection fraction. The present study goes further and we report for the first time the application of a novel antibody against the N-terminal Lys<sup>1</sup>, that has similar binding kinetics to commercially available antibodies, in an immunoassay that is specific for intact, active SDF-1. This antibody consequently has greater utility in the investigation of SDF-1α in a variety of settings, when combined with a detection antibody specific to the alpha isoform. Furthermore, as HCl.SDF1 is a recombinant antibody, it is consistent with a reductionist approach to animal experimentation.[39]

In an interesting approach to this problem, Wang *et al.* recently developed a method to quantify intact and cleaved SDF-1α using mass spectrometry.[40] They reported a LoQ of 20 pmol/L to 20 nmol/L in human plasma and, importantly, they demonstrated the



**Fig 10. Effect of RIC on intact SDF-1α in humans.** Plasma levels of full-length SDF-1α (quantified using HCl.SDF1α ELISA), decreased significantly in healthy male volunteers subjected to RIC.

<https://doi.org/10.1371/journal.pone.0174447.g010>

differentiation of intact from cleaved SDF-1α to be critical in the investigation of biomarkers of DPP4 efficacy. Using their assay, they report circulating SDF-1α in mice and primates to be in the range detectable by HCl.SDF1 (760 pg/ml and 310 pg/ml, respectively), although they did not report baseline levels in humans. The novel assay described in the present paper has the added advantage of being easy and relatively cost-effective to perform.

Using HCl.SDF1, we first demonstrated that SDF-1α levels are dramatically increased in serum, compared to platelet-free and platelet-poor plasma samples. SDF-1α is known to be contained in platelet granules and be expressed upon platelet activation,[41] as occurs during the preparation of serum samples. The observations we made on changes in SDF-1α levels could not be detected when using serum samples, due to this high background level of SDF-1α. It is therefore important to ensure correct sample preparation when measuring SDF-1α. Published results using existing commercially available assays for SDF-1α are highly variable.

Examination of the methods used in these studies reveals highly variable protocols, which include the analysis of both serum and plasma samples.[13, 42, 43]

As an example, we have challenged the existing paradigm that SDF-1 $\alpha$  is up-regulated in response to RIC, finding instead a significant decrease in active SDF-1 $\alpha$  after RIC. Combined with our previous observation that SDF-1 $\alpha$  levels appear to increase when measured with commercial assays, this would suggest that there is, in fact, an increase in cleaved, inactive SDF-1 $\alpha$ . To confirm this unanticipated finding we repeated the study in healthy human volunteers and observed a similar decrease in SDF-1 $\alpha$  levels after RIC, despite there being significant variability in baseline SDF-1 $\alpha$  measurements between individuals. Previously, circulating SDF-1 $\alpha$  variability has been associated with various factors including waist circumference,[44] time of day and acute stress.[45] We did not find any significant association between waist circumference and baseline SDF-1 $\alpha$ ; all experiments were performed at the same time of day to account for SDF-1 $\alpha$  circadian rhythm; and no major difference in stress levels of the subjects was apparent, although this was not specifically controlled for.

HCL.SDF1 also has potential value in the investigation of other isoforms of SDF-1. All isoforms are known to agonise CXCR4 but have distinct properties. For example, SDF-1 $\beta$  is more resistant than SDF-1 $\alpha$  to proteolysis.[46] Interestingly, expression of SDF-1 $\gamma$  has recently been reported in less vascular organs that are susceptible to infarction, including the heart.[46] However, the predominant and best described isoform is SDF-1 $\alpha$ .[27]

## Conclusions

SDF-1 $\alpha$  is ostensibly increased by RIC, a manoeuvre that has been associated with acute and chronic cardioprotection. However, by using an antibody specific to the intact, active form of SDF-1 $\alpha$  we have shown that RIC reduces circulating SDF-1 $\alpha$ , which we hypothesise is due to its cleavage, a finding we replicated in both rats and humans. This has implications for the increasing number of studies exploring the potential of SDF-1 $\alpha$  as a biomarker in a range of cardiovascular contexts. Further studies are necessary to fully elucidate the value of HCL.SDF1 as a biomarker in relation to clinical phenotypes.

## Supporting information

**S1 Fig. Fig 6 showing individual data points behind means.**  
(TIF)

**S2 Fig. Fig 8 showing individual data points behind means.**  
(TIF)

**S3 Fig. Fig 9 showing individual data points behind means.**  
(TIF)

## Acknowledgments

The authors would like to thank Dr Pellet-Many for assistance with laser Doppler imaging. We thank the UCL Cancer Institute core facilities for technical support on the Octet Red instrument. These facilities are supported by the Cancer Research UK, UCL Centre.

## Author Contributions

**Conceptualization:** DIB DMY SMD.

**Formal analysis:** DIB DMY SMD.

**Funding acquisition:** DIB DMY SMD.

**Investigation:** DIB ST MP.

**Methodology:** DIB SMD.

**Project administration:** DMY SMD.

**Supervision:** DMY SMD.

**Validation:** DIB DMY SMD.

**Visualization:** DIB SMD.

**Writing – original draft:** DIB.

**Writing – review & editing:** DIB DMY SMD.

## References

1. Kucia M, Reza R, Miekus K, Wanzeck J, Wojakowski W, Janowska-Wieczorek A, et al. Trafficking of normal stem cells and metastasis of cancer stem cells involve similar mechanisms: pivotal role of the SDF-1-CXCR4 axis. *Stem Cells*. 2005; 23(7):879–94. Epub 2005/05/13. <https://doi.org/10.1634/stemcells.2004-0342> PMID: 15888687
2. Nagasawa T, Nakajima T, Tachibana K, Iizasa H, Bleul CC, Yoshie O, et al. Molecular cloning and characterization of a murine pre-B-cell growth-stimulating factor/stromal cell-derived factor 1 receptor, a murine homolog of the human immunodeficiency virus 1 entry coreceptor fusin. *Proc Natl Acad Sci U S A*. 1996; 93(25):14726–9. Epub 1996/12/10. PMID: 8962122
3. Ratajczak MZ, Zuba-Surma E, Kucia M, Reza R, Wojakowski W, Ratajczak J. The pleiotropic effects of the SDF-1-CXCR4 axis in organogenesis, regeneration and tumorigenesis. *Leukemia*. 2006; 20(11):1915–24. Epub 2006/08/11. <https://doi.org/10.1038/sj.leu.2404357> PMID: 16900209
4. Ghadge SK, Muhlstedt S, Ozcelik C, Bader M. SDF-1alpha as a therapeutic stem cell homing factor in myocardial infarction. *Pharmacol Ther*. 2011; 129(1):97–108. Epub 2010/10/23. <https://doi.org/10.1016/j.pharmthera.2010.09.011> PMID: 20965212
5. Chatterjee M, Gawaz M. Platelet-Derived CXCL12 (SDF-1alpha): Basic Mechanisms and Clinical Implications. *Journal of thrombosis and haemostasis: JTH*. 2013. Epub 2013/09/13.
6. Rollins BJ. Chemokines. *Blood*. 1997; 90(3):909–28. Epub 1997/08/01. PMID: 9242519
7. Aiuti A, Webb IJ, Bleul C, Springer T, Gutierrez-Ramos JC. The chemokine SDF-1 is a chemoattractant for human CD34+ hematopoietic progenitor cells and provides a new mechanism to explain the mobilization of CD34+ progenitors to peripheral blood. *The Journal of experimental medicine*. 1997; 185(1):111–20. Epub 1997/01/06. PMID: 8996247
8. Zaruba MM, Franz WM. Role of the SDF-1-CXCR4 axis in stem cell-based therapies for ischemic cardiomyopathy. *Expert Opin Biol Ther*. 2010; 10(3):321–35. Epub 2010/02/06. <https://doi.org/10.1517/14712590903460286> PMID: 20132055
9. Kondo K, Shintani S, Shibata R, Murakami H, Murakami R, Imaizumi M, et al. Implantation of adipose-derived regenerative cells enhances ischemia-induced angiogenesis. *Arterioscler Thromb Vasc Biol*. 2009; 29(1):61–6. Epub 2008/11/01. <https://doi.org/10.1161/ATVBAHA.108.166496> PMID: 18974384
10. Dong F, Harvey J, Finan A, Weber K, Agarwal U, Penn MS. Myocardial CXCR4 expression is required for mesenchymal stem cell mediated repair following acute myocardial infarction. *Circulation*. 2012; 126(3):314–24. <https://doi.org/10.1161/CIRCULATIONAHA.111.082453> PMID: 22685115
11. Malik A, Bromage DI, He Z, Candilio L, Hamarneh A, Taferner S, et al. Exogenous SDF-1alpha Protects Human Myocardium from Hypoxia-Reoxygenation Injury via CXCR4. *Cardiovasc Drugs Ther*. 2015.
12. Davidson SM, Selvaraj P, He D, Boi-Doku C, Yellon RL, Vicencio JM, et al. Remote ischaemic preconditioning involves signalling through the SDF-1alpha/CXCR4 signalling axis. *Basic Res Cardiol*. 2013; 108(5):377. <https://doi.org/10.1007/s00395-013-0377-6> PMID: 23917520
13. Chang LT, Yuen CM, Sun CK, Wu CJ, Sheu JJ, Chua S, et al. Role of stromal cell-derived factor-1alpha, level and value of circulating interleukin-10 and endothelial progenitor cells in patients with acute myocardial infarction undergoing primary coronary angioplasty. *Circ J*. 2009; 73(6):1097–104. PMID: 19372622

14. Fortunato O, Spinetti G, Specchia C, Cangiano E, Valgimigli M, Madeddu P. Migratory activity of circulating progenitor cells and serum SDF-1alpha predict adverse events in patients with myocardial infarction. *Cardiovasc Res*. 2013; 100(2):192–200. <https://doi.org/10.1093/cvr/cvt153> PMID: 23761401
15. Matsuoka S, Uematsu M, Nakamura T, Shimizu T, Futamata M, Obata JE, et al. High levels of stromal cell-derived factor-1alpha predict secondary cardiac events in stable patients with a history of myocardial infarction. *J Cardiol*. 2017; 69(1):320–5. <https://doi.org/10.1016/j.jicc.2016.06.011> PMID: 27496337
16. Tong G, Wang N, Zhou Y, Leng J, Gao W, Tong X, et al. Role of stromal cell-derived factor-1 in patients with non-ST elevation acute coronary syndrome. *Int Heart J*. 2014; 55(3):219–27. PMID: 24806379
17. Kim BS, Jacobs D, Emontzophl C, Goetzenich A, Soppert J, Jarchow M, et al. Myocardial Ischemia Induces SDF-1alpha Release in Cardiac Surgery Patients. *J Cardiovasc Transl Res*. 2016; 9(3):230–8. <https://doi.org/10.1007/s12265-016-9689-x> PMID: 27055858
18. Liu K, Yang S, Hou M, Chen T, Liu J, Yu B. Increase of circulating stromal cell-derived factor-1 in heart failure patients. *Herz*. 2015; 40 Suppl 1:70–5.
19. Subramanian S, Liu C, Aviv A, Ho JE, Courchesne P, Muntendam P, et al. Stromal cell-derived factor 1 as a biomarker of heart failure and mortality risk. *Arterioscler Thromb Vasc Biol*. 2014; 34(9):2100–5. <https://doi.org/10.1161/ATVBAHA.114.303579> PMID: 25060794
20. Yamani MH, Ratliff NB, Cook DJ, Tuzcu EM, Yu Y, Hobbs R, et al. Peritransplant ischemic injury is associated with up-regulation of stromal cell-derived factor-1. *J Am Coll Cardiol*. 2005; 46(6):1029–35. <https://doi.org/10.1016/j.jacc.2005.04.059> PMID: 16168287
21. Baerts L, Waumans Y, Brandt I, Jungraithmayr W, Van der Veken P, Vanderheyden M, et al. Circulating Stromal Cell-Derived Factor 1alpha Levels in Heart Failure: A Matter of Proper Sampling. *PLoS One*. 2015; 10(11):e0141408. Epub 2015/11/07. <https://doi.org/10.1371/journal.pone.0141408> PMID: 26544044
22. Segers VF, Tokunou T, Higgins LJ, MacGillivray C, Gannon J, Lee RT. Local delivery of protease-resistant stromal cell derived factor-1 for stem cell recruitment after myocardial infarction. *Circulation*. 2007; 116(15):1683–92. <https://doi.org/10.1161/CIRCULATIONAHA.107.718718> PMID: 17875967
23. Crump MP, Gong JH, Loetscher P, Rajarathnam K, Amara A, Arenzana-Seisdedos F, et al. Solution structure and basis for functional activity of stromal cell-derived factor-1; dissociation of CXCR4 activation from binding and inhibition of HIV-1. *EMBO J*. 1997; 16(23):6996–7007. Epub 1998/01/31. <https://doi.org/10.1093/emboj/16.23.6996> PMID: 9384579
24. Misra P, Lebeche D, Ly H, Schwarzkopf M, Diaz G, Hajjar RJ, et al. Quantitation of CXCR4 expression in myocardial infarction using 99mTc-labeled SDF-1alpha. *J Nucl Med*. 2008; 49(6):963–9. <https://doi.org/10.2967/jnumed.107.050054> PMID: 18483105
25. Rothe C, Urlinger S, Lohning C, Prassler J, Stark Y, Jager U, et al. The human combinatorial antibody library HuCAL GOLD combines diversification of all six CDRs according to the natural immune system with a novel display method for efficient selection of high-affinity antibodies. *Journal of molecular biology*. 2008; 376(4):1182–200. Epub 2008/01/15. <https://doi.org/10.1016/j.jmb.2007.12.018> PMID: 18191144
26. Krebs B, Rauchenberger R, Reiffert S, Rothe C, Tesar M, Thomassen E, et al. High-throughput generation and engineering of recombinant human antibodies. *Journal of immunological methods*. 2001; 254(1–2):67–84. Epub 2001/06/19. PMID: 11406154
27. Davis DA, Singer KE, De La Luz Sierra M, Narazaki M, Yang F, Fales HM, et al. Identification of carboxypeptidase N as an enzyme responsible for C-terminal cleavage of stromal cell-derived factor-1alpha in the circulation. *Blood*. 2005; 105(12):4561–8. <https://doi.org/10.1182/blood-2004-12-4618> PMID: 15718415
28. Davidson SM, Selvaraj P, He D, Boi-Doku C, Yellon RL, Vicencio JM, et al. Remote ischaemic preconditioning involves signalling through the SDF-1alpha/CXCR4 signalling axis. *Basic Res Cardiol*. 2013; 108(5):377. Epub 2013/08/07. <https://doi.org/10.1007/s00395-013-0377-6> PMID: 23917520
29. Myocardial Infarction Genetics C, Kathiresan S, Voight BF, Purcell S, Musunuru K, Ardissino D, et al. Genome-wide association of early-onset myocardial infarction with single nucleotide polymorphisms and copy number variants. *Nat Genet*. 2009; 41(3):334–41. <https://doi.org/10.1038/ng.327> PMID: 19198609
30. Mehta NN, Matthews GJ, Krishnamoorthy P, Shah R, McLaughlin C, Patel P, et al. Higher plasma CXCL12 levels predict incident myocardial infarction and death in chronic kidney disease: findings from the Chronic Renal Insufficiency Cohort study. *European heart journal*. 2014; 35(31):2115–22. Epub 2013/12/07. <https://doi.org/10.1093/eurheartj/ehu481> PMID: 24306482
31. Jiang Q, Song P, Wang E, Li J, Hu S, Zhang H. Remote ischemic postconditioning enhances cell retention in the myocardium after intravenous administration of bone marrow mesenchymal stromal cells. *J Mol Cell Cardiol*. 2013; 56:1–7. Epub 2013/01/08. <https://doi.org/10.1016/j.yjmcc.2012.12.016> PMID: 23291430

32. Kamota T, Li TS, Morikage N, Murakami M, Ohshima M, Kubo M, et al. Ischemic pre-conditioning enhances the mobilization and recruitment of bone marrow stem cells to protect against ischemia/reperfusion injury in the late phase. *J Am Coll Cardiol*. 2009; 53(19):1814–22. <https://doi.org/10.1016/j.jacc.2009.02.015> PMID: 19422991
33. Damas JK, Waehre T, Yndestad A, Ueland T, Muller F, Eiken HG, et al. Stromal cell-derived factor-1alpha in unstable angina: potential antiinflammatory and matrix-stabilizing effects. *Circulation*. 2002; 106(1):36–42. PMID: 12093767
34. Chung ES, Miller L, Patel AN, Anderson RD, Mendelsohn FO, Traverse J, et al. Changes in ventricular remodelling and clinical status during the year following a single administration of stromal cell-derived factor-1 non-viral gene therapy in chronic ischaemic heart failure patients: the STOP-HF randomized Phase II trial. *Eur Heart J*. 2015; 36(33):2228–38. Epub 2015/06/10. <https://doi.org/10.1093/eurheartj/ehv254> PMID: 26056125
35. Penn MS, Mendelsohn FO, Schaer GL, Sherman W, Farr M, Pastore J, et al. An open-label dose escalation study to evaluate the safety of administration of nonviral stromal cell-derived factor-1 plasmid to treat symptomatic ischemic heart failure. *Circulation research*. 2013; 112(5):816–25. Epub 2013/02/23. <https://doi.org/10.1161/CIRCRESAHA.111.300440> PMID: 23429605
36. Kanki S, Segers VF, Wu W, Kakkar R, Gannon J, Sys SU, et al. Stromal cell-derived factor-1 retention and cardioprotection for ischemic myocardium. *Circ Heart Fail*. 2011; 4(4):509–18. <https://doi.org/10.1161/CIRCHEARTFAILURE.110.960302> PMID: 21606214
37. Zaruba MM, Theiss HD, Vallaster M, Mehl U, Brunner S, David R, et al. Synergy between CD26/DPP-IV inhibition and G-CSF improves cardiac function after acute myocardial infarction. *Cell stem cell*. 2009; 4(4):313–23. <https://doi.org/10.1016/j.stem.2009.02.013> PMID: 19341621
38. Theiss HD, Gross L, Vallaster M, David R, Brunner S, Brenner C, et al. Antidiabetic gliptins in combination with G-CSF enhances myocardial function and survival after acute myocardial infarction. *International journal of cardiology*. 2013; 168(4):3359–69. Epub 2013/05/15. <https://doi.org/10.1016/j.ijcard.2013.04.121> PMID: 23669105
39. Gray AC, Sidhu SS, Chandrasekera PC, Hendriksen CF, Borrebaeck CA. Animal-based antibodies: Obsolete. *Science*. 2016; 353(6298):452–3. Epub 2016/07/30.
40. Wang W, Choi BK, Li W, Lao Z, Lee AY, Souza SC, et al. Quantification of intact and truncated stromal cell-derived factor-1alpha in circulation by immunoaffinity enrichment and tandem mass spectrometry. *J Am Soc Mass Spectrom*. 2014; 25(4):614–25. Epub 2014/02/07. <https://doi.org/10.1007/s13361-013-0822-7> PMID: 24500701
41. Chatterjee M, Huang Z, Zhang W, Jiang L, Hultenby K, Zhu L, et al. Distinct platelet packaging, release, and surface expression of proangiogenic and antiangiogenic factors on different platelet stimuli. *Blood*. 2011; 117(14):3907–11. Epub 2011/02/19. <https://doi.org/10.1182/blood-2010-12-327007> PMID: 21330475
42. Leone AM, Rutella S, Bonanno G, Contemi AM, de Ritis DG, Giannico MB, et al. Endogenous G-CSF and CD34+ cell mobilization after acute myocardial infarction. *Int J Cardiol*. 2006; 111(2):202–8. Epub 2005/07/30. <https://doi.org/10.1016/j.ijcard.2005.06.043> PMID: 16051386
43. Abbott JD, Huang Y, Liu D, Hickey R, Krause DS, Giordano FJ. Stromal cell-derived factor-1alpha plays a critical role in stem cell recruitment to the heart after myocardial infarction but is not sufficient to induce homing in the absence of injury. *Circulation*. 2004; 110(21):3300–5. Epub 2004/11/10. <https://doi.org/10.1161/01.CIR.0000147780.30124.CF> PMID: 15533866
44. Jung C, Fischer N, Fritzenwanger M, Pernow J, Brehm BR, Figulla HR. Association of waist circumference, traditional cardiovascular risk factors, and stromal-derived factor-1 in adolescents. *Pediatric diabetes*. 2009; 10(5):329–35. Epub 2008/12/17. <https://doi.org/10.1111/j.1399-5448.2008.00486.x> PMID: 19076302
45. Mendez-Ferrer S, Lucas D, Battista M, Frenette PS. Haematopoietic stem cell release is regulated by circadian oscillations. *Nature*. 2008; 452(7186):442–7. Epub 2008/02/08. <https://doi.org/10.1038/nature06685> PMID: 18256599
46. Janowski M. Functional diversity of SDF-1 splicing variants. *Cell adhesion & migration*. 2009; 3(3):243–9. Epub 2009/03/17.