

Very Early Responses to Colour Stimuli Detected in Prestriate Visual Cortex by Magnetoencephalography (MEG)

Yoshihito Shigihara, Hideyuki Hoshi and Semir Zeki

Wellcome Laboratory of Neurobiology,

University College London

Authors: Yoshihito Shigihara, Hideyuki Hoshi, and Semir Zeki

Affiliation: Wellcome Laboratory of Neurobiology, University College London, University
College London, Gower Street, London, WC1E 6BT

Corresponding author: Semir Zeki (s.zeki@ucl.ac.uk); University College London, Gower
Street, London, WC1E 6BT

TEL/FAX, +44 (0) 20 7679 7316

Journal section: Research Articles

Short title: Very early responses to colour

*Keywords: colour vision, early cortical latencies, Area V4, prestriate cortex, V1-bypassing
input.*

Abstract

Our previous studies with the visual motion and form systems show that visual stimuli belonging to these categories trigger much earlier latency responses from the visual cortex than previously supposed and that the source of the earliest signals can be located in either the prestriate cortex or in both the striate (V1) *and* prestriate cortex. This is consistent with the known anatomical connections since, in addition to the classical retino-geniculo-striate cortex input to the prestriate visual areas, there are direct anatomical inputs from both the lateral geniculate nucleus and the pulvinar that reach the prestriate visual cortex without passing through striate cortex. In pursuing our studies, we thought it especially interesting to study another cardinal visual attribute, namely colour, to learn whether colour stimuli also provoke very early responses, at less than 50 ms from visual cortex. To address the question, we asked participants to view stimuli that changed in colour and used magneto-encephalography to detect very early responses (< 50 ms) in the occipital visual cortex. Our results show that coloured stimuli also provoke an early cortical response (M30), with an average peak time at 31.7 ms, thus bringing the colour system into line with the visual motion and form systems. We conclude that colour signals reach visual cortex, including prestriate visual cortex, earlier than previously supposed.

1. Introduction

It has long been known that the lateral geniculate nucleus (LGN), a thalamic station in the classical visual pathway from retina to cortex, projects not only to the primary visual cortex (striate cortex: area V1) but also to the visual areas of the prestriate cortex [Benevento & Yoshida, 1981; Yuki & Iwai, 1981; Fries, 1981; Gattass *et al.*, 2014] and that visual signals are detected in the LGN in the 20-30 ms time window after stimulus onset [Givre *et al.*, 1995; Maunsell and Gibson, 1992; Nowak *et al.*, 1995]. Electro-encephalographic (EEG) and magneto-encephalographic (MEG) studies have shown that signals related to two out of the three cardinal visual attributes, - forms (both simple and complex) and motion - can be detected in V1, V2 and V3 as well as in areas critical for the processing of face and house stimuli within the early time window of 25-45 ms [Shigihara & Zeki, 2013, 2014; Shigihara *et al.*, 2016] while visual signals related to fast motion can be detected in V5 before V1, at around 30 ms [ffytche *et al.*, 1995]. This leaves out of account another cardinal visual attribute, namely colour. Previous studies have shown that the earliest responses to colour stimuli have a range of 72-120 ms [Paulus *et al.*, 1986; Plendl *et al.*, 1993; Schmolesky *et al.*, 1998; Kuriki *et al.*, 2005; Amano *et al.*, 2006], considerably later than the responses elicited by form and motion stimuli [ffytche *et al.*, 1995; Shigihara & Zeki, 2013, 2014; Shigihara *et al.*, 2016]. Given the responses at less than 50 ms detected in LGN and in prestriate visual areas, we were interested to re-examine the time course of visual cortical responses to the viewing of coloured stimuli and to learn whether they, too, can be detected at early time windows, of 25-50 ms.

2. Material and Methods

2.1. Participants and study design

Twenty four healthy adult volunteers (14 female, mean age 27.8 ± 5.4 years) took part in the study, and data from 19 participants (10 female, 1 left-handed, mean age 28.2 ± 5.3 years) were analysed. Five participants were excluded from analysis, either because they slept in the scanner, had large body movement artefacts in the acquired data, or because we encountered technical problems with their datasets. None of the participants had a history of neurological or psychiatric disorder; written informed consent was obtained from all and the study, which conforms to the Code of Ethics of the World Medical Association (Declaration of Helsinki; printed in the British Medical Journal 18 July 1964), was approved by the Ethics Committee of University College London.

2.2. Stimuli and Task

Stimuli were generated using Cogent 2000 and Cogent Graphics (<http://www.vislab.ucl.ac.uk/cogent.php>) toolboxes running in MATLAB (MathWorks, Natick, MA, USA). To stimulate the colour system preferentially and at the same time minimize the stimulation of the form system, we used colour stimuli with the following characteristics (Figure 1):

(1) The stimuli consisted of two coloured (blue and red) and one grey circles (5.0° in diameter) but, in any given presentation, only two were displayed (e.g. blue and grey or red and grey or blue and red or grey and grey). The pairs of stimuli were displayed separately in either the lower left or lower right quadrants of the visual field (and subtended $2.5^\circ - 7.5^\circ$ in

visual angle); this was done to avoid cancelation effects that can occur when both banks of the calcarine sulcus are stimulated [Portin et al., 1999].

(2) The edges of the circles were blurred using sine curve filtering to minimize the stimulation of edge detectors in both V1 and V2; cells in V4 can also be sensitive to both edges and colours [Zeki, 1983a; Bushnell & Pasupathy, 2012] though their orientation profiles are broader than equivalent cells in V1 and V2 [Zeki, 1983a; Desimone & Schein, 1987].

(3) Two different colours (blue and red) were used because long-wave and short-wave inputs have significantly different anatomical distributions within the LGN [Chatterjee and Callaway, 2003; Martin et al., 1997; Mullen et al., 2008]. The V1-bypassing input from the LGN to area V4 comes mainly from the intercalated layers [Lyon and Rabideau, 2012; Lysakowski et al., 1988], which is dominated by the short-wave cone input, while the parvocellular layers, which project to V4 through V1, are dominated by long- and middle-wave cone inputs. It was therefore conceivable that blue and red stimuli would activate visual cortex differentially, both spatially and temporally. Hints that this may be so are found in the fact that red stimuli produce stronger responses in V1 and are more potent in eliciting seizures in photosensitive individuals than blue light [Givre et al., 1995; Takahashi and Fujiwara, 2004; Takahashi and Tsukahara, 1998];

(4) The intensities of blue, red, and grey were adjusted to be equal to each other for each participant by using the flicker photometry method, as before (Bartels & Zeki, 2006: <http://www.vislab.ucl.ac.uk/cogent.php>).

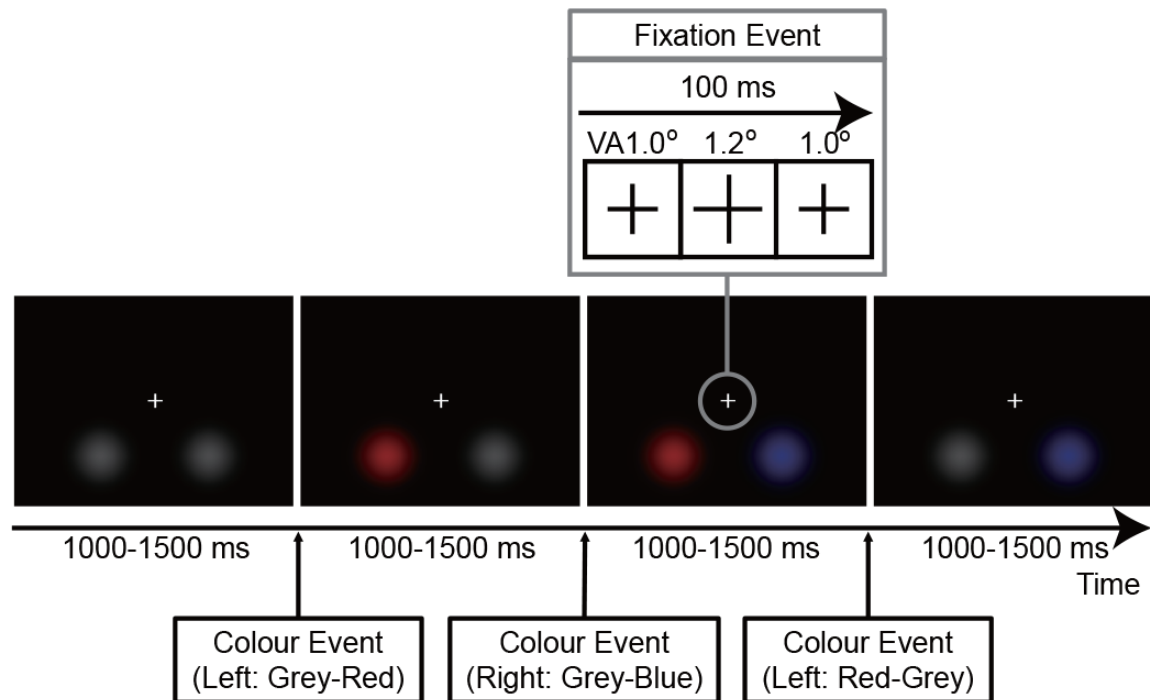


Figure 1. Schematic representation of the stimulation paradigm. There were 288 colour events per MEG scanning session, with random intervals between colour changes (1000-1500 ms). Within randomly selected 10 intervals, the fixation cross increased in dimensions (from 1.0 to 1.2°) for 100 ms (fixation event). Participants were instructed to keep fixating the cross and asked to press a button when the fixation event occurred. One MEG scanning session took 4 min 48 sec to 7 min 12 sec (varying according to the intervals); each participant performed 6 sessions with a short break between them.

Each participant had 5 to 6 scanning sessions in total. The duration of each session varied between 4 min 48 sec and 7 min 12 sec, depending on inter-stimulus intervals (ISI), which were randomly assigned at the beginning of each session. In a given session, participants viewed passively a change of the colour (colour event) in either the lower left or right quadrant with a randomly varied ISI of 1000-1500 ms. The colour event occurred 288 times per session, and consisted of 24 times \times 12 changing patterns in total [6 changing colour pairs (grey to blue, red to blue, grey to red, blue to red, blue to grey and red to grey) \times 2 quadrants (lower left and right)]. The 288 colour events fell into 6 conditions, which consisted of three

colour conditions and two quadrants. The three colour conditions (blue, red, and grey) were defined by the colour which appeared after the colour event (e.g. with blue, this was grey to blue or red to blue). The order of the colour events (12 changing patterns) was randomized within a session, during which participants were instructed to focus on a circular fixation point of ($1.0^\circ \times 1.0^\circ$) located at the centre of the screen, and press a button when its size changed (fixation event). The fixation event occurred randomly 10 times per session, was 100 ms in duration and 0.2° in extent. The fixation events always occurred within the ISI of a colour event, so that the two events did not overlap temporally. A schematic representation of the paradigm used is given in Figure 1.

2.3. Scanning Details

MEG scans were performed inside a magnetically shielded room. Participants were seated in the scanner and viewed a screen placed 60 cm in front of them. Stimuli (5.0° in diameter) were rear projected by a projector (DLA-SX21, Victor Company of Japan, Kanagawa, Japan) with a resolution of 800×600 pixels at 60 Hz. Trigger signals were recorded for the MEG system through an IEEE 1284 connection. We had determined through a photodiode placed on the screen that the delay between the trigger signal and the projection of stimuli was 33 ± 4 ms; during data processing, data was accordingly shifted by 33 ms, to correct for the delay. MEG data were recorded continuously using a 275-channel CTF Omega whole-head gradiometer (VSM MedTech, Coquitlam, Canada). Data were sampled at 1200 Hz with a 200 Hz low-pass filter. Participants were fitted with localizer coils at the nasion and 1 cm anterior to the left and right tragus to monitor head movement during the recording sessions.

2.4. MEG data processing

Data were analysed offline using SPM-8 (Wellcome Trust Centre for Neuroimaging, London, UK; <http://www.fil.ion.ucl.ac.uk/spm>). They were divided into 1000 ms epochs, each starting 500 ms before stimulus onset. Epochs affected by blink artefacts (detected using the eye-tracker and also by manual inspection of the raw signal data) were discarded and the remaining ones averaged in each condition and baseline corrected. About 120 responses were recorded for each participant, condition and quadrant. The signal during the 100 ms period preceding stimulus onset was used as a baseline. Software filters produce artefacts [Acunzo et al., 2012; Ramkumar et al., 2013] and are not recommended [Vanrullen, 2011]; like others before us [Noguchi *et al.*, 2004; Inui & Kakigi, 2006; Acunzo, *et al.*, 2012; Shigihara & Zeki, 2014], we therefore analysed our results without filters to identify the early response.

2.5. Sensor-level analysis

2.5.1. Data quality check

Sensor-level analysis is the central and essential part of this study; it provides the foundation for all other results, namely evidence that there is a very early response (< 50 ms) to colour events. Before starting the main part of the sensor-level analysis, we drew averaged visual evoked magnetic field (VEF) waveforms (butterfly maps) using a set of occipital sensors (MLO 11–53 and MRO 11–53; defined by SPM-8) for each quadrant presentation (lower left and right), to confirm that the recording and the pre-processing were properly undertaken (Figure 2).

2.5.2. Amplitude analysis

The amplitude analysis consisted of two steps: (1) visual inspection (identification) and (2) statistical analysis.

Although the VEF waveforms (butterfly maps: Figure 2) showed clear VEFs at around 100 (M100) and 170 ms (M170) after stimulus onset, responses at < 50 ms could not be identified visually, because of their low signal to noise ratio (SNR). To identify them we used an absolute amplitude analysis, which is sensitive for detecting very early responses, as we had done in our previous study [Shigihara & Zeki, 2013]. The absolute amplitude was calculated as the difference between maximum and minimum magnetic field intensities within a set of occipital sensors (MLO 11–53 and MRO 11–53; defined by SPM-8) at each sampling point. The left-most section of Figure S1 in Supplementary Material represents the calculated absolute amplitude waveforms schematically. They were averaged between all sessions and 19 participants, for each of the 6 conditions (3 colours \times 2 quadrants), (Figure 3a). To identify the average peak time by using the best SNR dataset, we also drew a waveform averaged across all conditions (Figure 3b), from which we defined the average peak time (31.7 ms).

Next, statistical analyses were applied to confirm that early responses at less than 50 ms (M30) were not the result of fluctuations in their baselines but that they reflect significant VEFs. For each of the 6 conditions (3 colours \times 2 quadrants), we compared the absolute amplitude at the peak time (31.7 ms) against the baseline amplitude (the average amplitude during 50 ms preceding the stimulus onset) by using paired *t*-test. Additionally, the amplitudes at the peak times were compared between the 6 conditions by a two-way ANOVA [3 colours (blue, red and grey) \times 2 quadrants (left and right)] with repeated measures, followed by post-hoc comparisons with Bonferroni correction. The results of statistical tests

are shown in Table 1 and 2. Note that differences in peak latencies (peak times) were not compared (tested statistically) between conditions, while their amplitudes were. This is because of the difficulties and limitations of the statistical tests for peak times (see section 4.6 in Discussion for the detail).

2.5.3. Contour-map analysis

Amplitude analysis showed that there was a significant M30 response; this was ascertained by studying the topographic patterns of the magnetic responses, using contour maps. Contour maps constitute a means of representing the sensor-level analysis to show the topographic pattern of the magnetic responses in two dimensions. They also reveal the orientation of the neural current (dipole orientation), which can help us to distinguish between two adjacent parts of the responsive cortex [Allison et al., 1991; Hämäläinen et al., 1993; Papadelis et al., 2011]. Contour maps were drawn for each of the 6 conditions at the average peak time of M30 (31.7 ms) (Figure 4).

2.6. Source-level analysis

The two steps of the sensor-level analysis (amplitude analysis and contour-map analysis) described above showed that there was an M30 response to colour stimulation. Both (lateral) sides of the occipital areas were responsible for producing it (contour-map analysis). To estimate more precisely the locations of brain areas producing the response, we carried out a source-level analysis using Multiple Sparse Priors (MSP, Greedy search) [Friston et al., 2008; Mattout et al., 2005]. Forward modelling was performed for the whole brain using a single sphere model (fine mode) with individual participant anatomical scans acquired by a 3T MRI

scanner (Siemens Magnetron Allegra or Trio Tim 3T scanner, Siemens, Erlangen, Germany). Four out of 19 participants could not participate in the structural MRI scans for a variety of reasons (tattoos, claustrophobia, etc); for them, we therefore used the standard brain template in SPM. The source inversion was performed for the 0-75 ms time window after stimulus onset, using MSP for each participant, session and condition separately. No source priors were used for source localization. The sources of the VEFs for the peak time of M30 (31.7 ms) were estimated by MSP without filters (session level analysis). These images were averaged for each participant using the Image Calculator in SPM-8 (first level analysis), which is a mathematical tool to manipulate sets of corresponding numbers in 3D space. The calculated images were taken to the second (group) level analysis using *t*-tests.

Here we report the source locations of the peak time of M30 (31.7 ms) at a significance threshold of p (FWE corrected) < 0.05 , although this was not essential because the sensor-level analysis had already confirmed that there were sources in the occipital cortex (Figure 3, 4 and Table 1). See also the right-most section of Figure S1 in Supplementary Material, for schematic representation of the series of source-level analyses.

3. Results

3.1. Behavioural results

To restrict the presentation of stimuli to the left and right lower visual fields, participants were instructed to fixate the central fixation cross throughout the MEG scanning sessions. To confirm that they were doing so, the central cross changed in size randomly (Fixation Event; 10 times in a session), which participants were asked to indicate by a button press. On average, in 84% ($SD = 13.5$) of total fixation events, they detected the events successfully and pressed the button within 1 sec after the event. As the change in the dimensions of the cross was very small (0.2°) and its duration short (100 ms) and as some participants reported difficulties in maintaining focus on the cross in a dark room, due to micro-saccades (reviewed in Martinez-Conde *et al.*, 2004), the detection rate of 83% is a reasonable confirmation that fixation of the central cross was high for our purposes.

3.2. Results from Sensor-level Analysis

3.2.1. Data quality check

VEF waveforms for the left and right quadrant conditions are shown separately in Figure 2. Each of the 38 lines in the figures represent the averaged dataset in 38 occipital sensors. Two sequential late responses are evident with peaks around 100 ms (M100) and 170 ms (M170) after stimulus onset, (sections enclosed by rectangles in Figure 2). The former probably corresponds to the classical N75 or / and P100 response to visual stimuli, while the latter replicates the late responses to colour stimuli reported by the others [Plendl *et al.*, 1993; Kuriki *et al.*, 2005]. The polarities of the M100 and M170 responses are opposite between the two presentation quadrants (lower left and right). This shows that the MEG recording and

analyses were done properly. These late responses (M100 and M170) are not, however, the main interest of the present study, which is concerned with the very early responses after colour events; we therefore did not study them further.

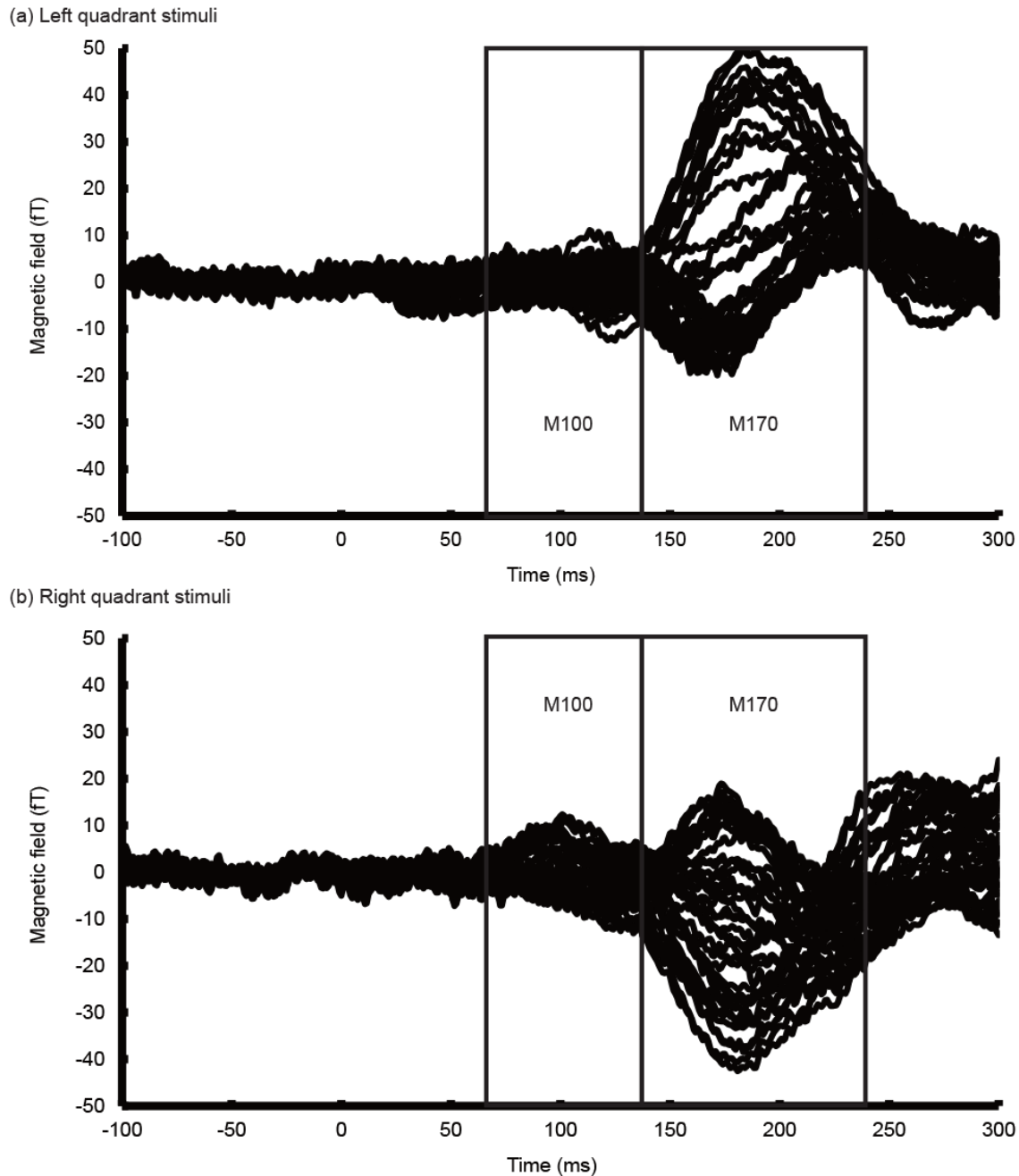


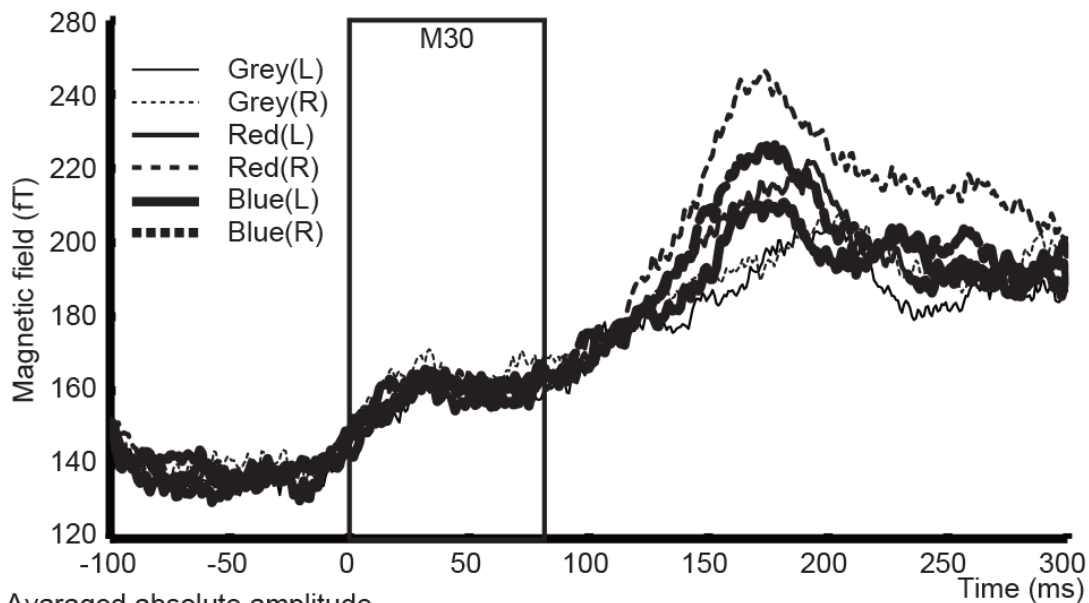
Figure 2. VEF waveforms measured by occipital sensors, averaged across 19 participants and both quadrants. The upper figure (a) shows the waveform resulting from left quadrant stimulation and the lower figure (b) that resulting from right quadrant stimulation. Each of the 38 lines represents the averaged dataset in 38 occipital sensors. Two sequential responses, M100 and M170 are shown in the sections enclosed by rectangles. The polarities of the responses are opposite between left and right quadrant conditions.

3.2.2. Amplitude analysis

To obtain an effective detection power for the very early component of the VEF, the absolute amplitude waveforms were calculated for each of the 6 conditions (Figure 3a). There are clear responses with peaks at around 30 ms after stimulus onset (M30) for all conditions (section enclosed by a rectangle in Figure 3a). Figure 3b shows the absolute amplitude waveform averaged across all conditions, which has the best SNR available in the present study. It also shows clear M30 response (section enclosed by a rectangle) with a peak time at 31.7 ms after stimulus onset.

For each condition, the magnetic amplitude at the peak time (31.7 ms) was compared against the amplitude during the baseline period (-50 to 0 ms before stimulus onset) using paired *t*-test. The results were significant for all conditions, indicating that all of the 6 conditions showed the significant M30 responses. We also compared the peak amplitudes between the 6 conditions using two-way ANOVA with repeated measures. None of the main-effects of the quadrant or colour conditions, or the interactions, were significant, indicating that the peak amplitudes of M30 responses were not significantly different between the conditions. The results of those statistical tests are shown in Table 1 and 2.

(a) Absolute amplitude of each condition



(b) Averaged absolute amplitude

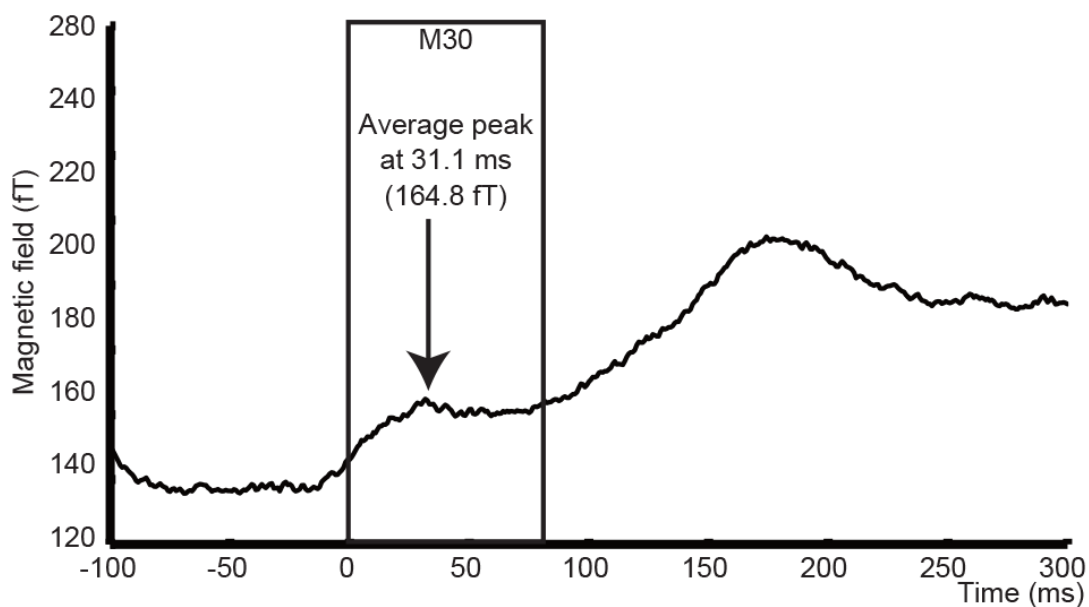


Figure 3. (a) Absolute amplitude waveforms averaged across 19 participants. Each of the 6 lines represents the averaged dataset in 6 conditions (blue, red and grey colour in lower left and right quadrant). Very early responses (M30) were obtained for all conditions (in the section enclosed by a rectangle). (b) Absolute amplitude waveforms averaged across 19 participants and all conditions, which also shows M30 responses with an average peak time at 31.7 ms after stimulus onset.

Table 1 The results of the statistical analysis (t-test) on M30.

Condition		Magnetic field amplitude (fT)				Paired t-test	
		Peak		Baseline		<i>t</i>	<i>P</i>
Side	Colour	Mean	<i>SD</i>	Mean	<i>SD</i>		
Left	Blue	165.9	46.1	138.3	33.5	6.87	< 0.0001
	Red	161.9	44.3	137.6	32.8	5.72	< 0.0001
	Grey	163.5	36.4	136.7	33.0	8.83	< 0.0001
Right	Blue	165.3	39.5	139.2	33.8	7.74	< 0.0001
	Red	164.7	42.3	139.0	31.7	6.30	< 0.0001
	Grey	168.3	47.3	141.0	33.0	5.15	< 0.0001

Table 2. The results of the statistical analysis (two-way ANOVA) on M30.

		F	P
Main effect	Colour	0.48	0.625
	Side	0.49	0.495
Interaction		0.21	0.816

3.2.3. Contour-map analysis

Contour maps for each of the 6 conditions (3 colours \times 2 quadrants) at the peak time of M30 (31.7 ms) are given in Figure 4. All show at least two sets of combinations of inflow and outflow of magnetic fields in occipital sensors on both sides, indicating that there was at least one brain area on each side producing the response. The topographic pattern was not the typical one which represents the magnetic source produced solely by V1 [Hatanaka et al., 1997; Seki et al., 1996; Shigeto et al., 1998]. Furthermore, the patterns of magnetic fields indicate that the orientations of the currents produced by the neural responses, when the stimuli were presented in the contralateral quadrant, were different for the blue and red conditions (section enclosed by rectangles in Figure 4). This suggests that different colours produce responses in different, though adjacent, zones within a brain area located in prestriate cortex (see section 4.5.2 in Discussion for the detail).

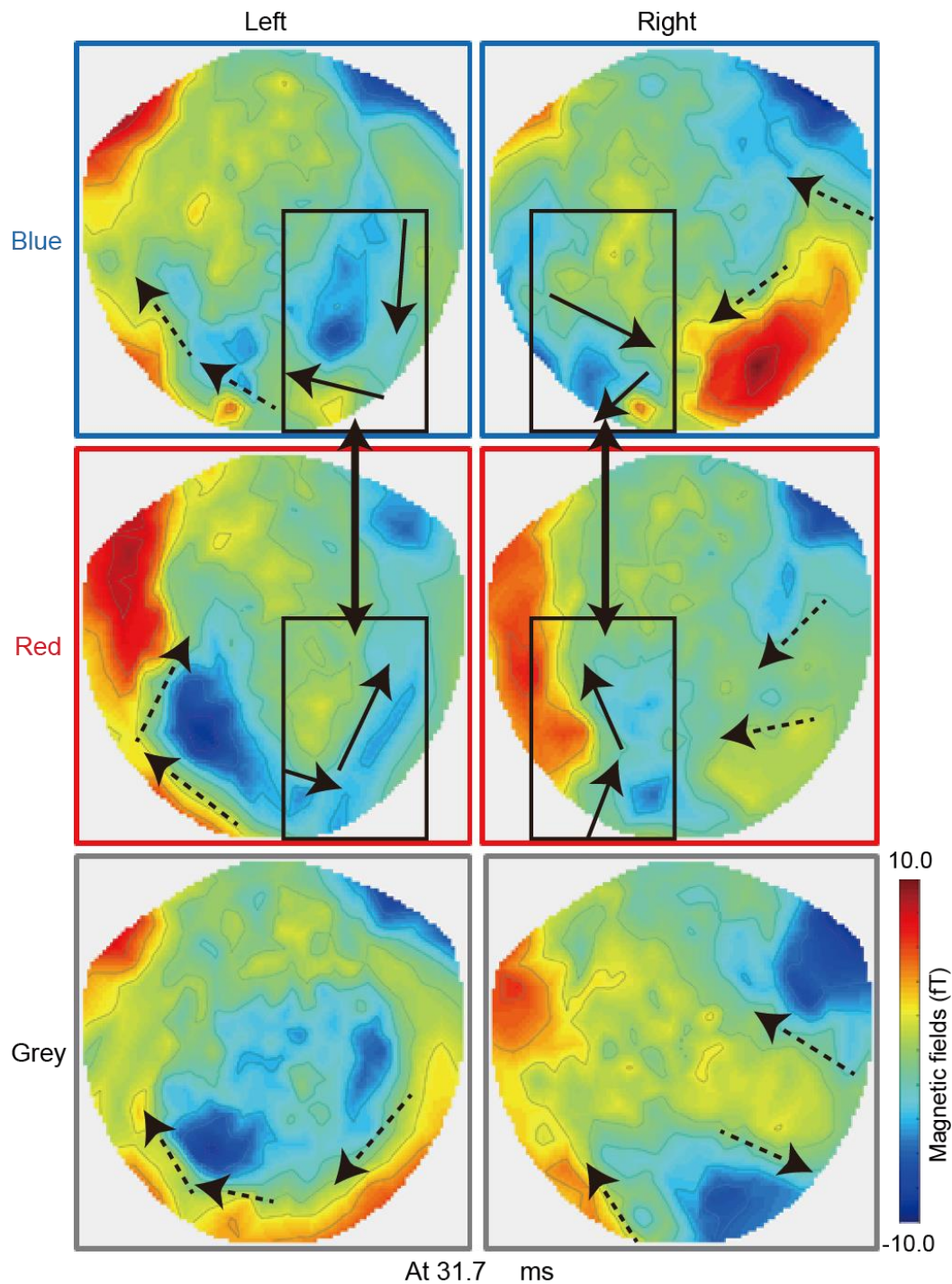


Figure 4. Contour maps drawn for each of the colour conditions in each quadrant at the peak time of M30 (31.7 ms). Note that all show at least two sets of combinations of inflow and outflow of magnetic fields in occipital sensors on both sides. Also note that, between blue and red colour conditions, estimated current orientations were different in the sections enclosed by rectangles (contralateral hemisphere to the stimulus presentation). Bold arrow, dipole orientation in contra-lateral occipital area; broken arrow, dipole orientation in the other areas.

3.3. Results from source-level analysis

We estimated the source of the VEF components at the peak time of M30 (31.7 ms after stimulus onset), in which significant magnetic responses were found in the amplitude analysis and the responses in occipital areas were confirmed through the contour-map analysis. To learn which brain areas were the most likely to have produced the response, we estimated the source of the signals using MEG at the 31.7 ms after stimulus onset. Estimated source locations for the 6 conditions are shown in Figure 5; they were estimated to have been in visual cortex, and mainly in prestriate cortex, including area V4 (colour area: indicated by yellow circles in Figure 5). This suggests that our analyses detected the M30 response correctly. The results of source estimation did not show explicit differences in the locations of estimated magnetic source between conditions, although the estimated current orientation in the contour maps (section enclosed by rectangles in Figure 4) is different between conditions (see Discussion).

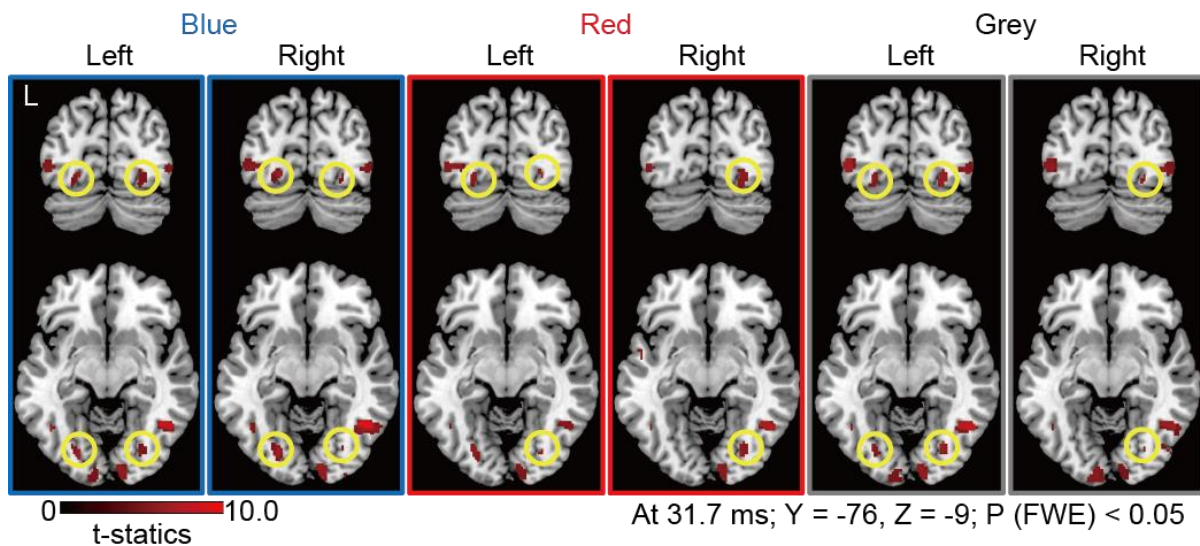


Figure 5. Statistical parametric maps estimated for each colour condition in each quadrant at 31.7 ms (M30), which is the earliest time window at which we detected responses. The display threshold is at peak level p (FWE corrected) < 0.05, and the clusters in the V4 complex are identified by yellow circles.

Summarizing these results, our sensor-level analysis showed that the very early response with our colour stimuli had an average peak at 31.7 ms (M30) ms after stimulus onset, that this response was produced mainly by prestriate cortex (including area V4) and that different coloured stimuli yield responses from adjacent parts of this active zone (as detected by dipole orientation in contour maps).

4. Discussion

Our principle finding in this study is that the viewing of coloured stimuli produces a very early response (M30) in the visual brain, with a peak at 31.7 ms after stimulus onset. We demonstrated this by amplitude analysis (absolute amplitude analysis), using methods established in our previous studies [Shigihara et al., 2016; Shigihara and Zeki, 2013; Shigihara and Zeki, 2014b]. All 6 conditions constituting the experiment were analysed independently and showed similar VEF waves with a peak at around 31.7 ms as average (Figure 3a) close to the time window of the very early response for fast motion (about 30-35 ms)[ffytche *et al.*, 1995], for form (27-42 ms)[Shigihara and Zeki, 2013] and for checker board patterns (25-30 ms) [Shigihara et al., 2016].

By using the same MEG technique to show that colour stimuli elicit a response at about 30 ms from visual cortex (M30), this demonstration brings colour into line with form and motion, both of which provoke significantly earlier responses from visual cortex, including prestriate visual cortex, than previously supposed.

4.1. Technical advantages of the present study

The average peak of the M30 response to colour stimuli was found to occur at 31.7 ms after stimulus onset and was earlier than the ones reported in previous studies (72-120 ms) [Amano et al., 2006; Kuriki et al., 2005; Paulus et al., 1986; Plendl et al., 1993; Schmolesky et al., 1998]. There are two reasons which may account for our success in detecting these very early responses, which are not evident in past studies: (1) We used absolute amplitude analysis; the M30 cannot be identified in VEF waveforms (Figure 2) which are commonly used in studies using EEG/MEG, because the amplitudes were small and close to the noise level. Thus, earlier studies may have ignored this early component and only focused on salient later responses (e.g. M100, M170) in the VEF waveforms. Through our earlier studies [Shigihara et al., 2016; Shigihara and Zeki, 2013; Shigihara and Zeki, 2014b], we have established protocols to detect small, early, responses; this consists of an absolute amplitude and sensor of interest (SOI) analysis, together with affiliated statistical analyses, followed by a contour map analysis. As described in the Methods section, the amplitude analysis is sensitive for detecting weak responses, evoked in local areas of the brain and recorded with a small number of sensors. The dynamic difference of the scales of the magnetic amplitudes between VEFs (Figure 2: within the range of -50 to 50 fT) and absolute amplitude waveforms (Figure 3: within the range of 120 to 270 fT) reflects the difference of the sensitivity between the two methods. In the standard VEF waveform (Figure 2), the averaging of the waveforms across the sessions, participants, and conditions reduces the absolute amplitudes of the waveforms. The same sensor may record the responses with opposite polarity between sessions (due to the difference of the head position) and between conditions (due to the difference of the cortical source). Therefore, averaging across the datasets with such opposite polarities (positive and negative values) would potentially cancel out the amplitudes in the resulting waveforms. The absolute amplitude of the waveforms (Figure 3) do not suffer from the

cancellation effects, since there are no negative values. Our tailored analysis method to detect the small response thus enabled us to identify the M30 response. (2) We used isoluminant colour stimuli with blurred edges for stimulating the lower quadrants: such stimuli activate the colour system preferentially and reduce activation of the form system, hence lessening any contamination between the two systems and maximizing the sensitivity of the MEG recording [Leventhal et al., 1998; Song and Baker, 2007].

4.2. Reliability of detecting very early responses to colour stimuli

Although the absolute amplitude waveforms showed clear M30 responses with the peak around 31.7 ms post stimulus (Figure 3), we wanted additional evidence to validate the finding. There are three lines of evidence: (1) significant responses shown by the amplitude analysis (section 3.2.2); (2) a difference in dipole orientation between blue and red stimuli (section 3.2.3); and (3) a reasonable and expected source estimation in prestriate cortex including the colour area (V4) (section 3.3). These results were independent of each other and all strongly support our main conclusion - that signals activate the visual brain much earlier than previously supposed. The M30 responses to the colour stimuli at around 31.7 ms post stimulation that we report are, therefore, unlikely to be the consequence of noise or artefacts obtained through inappropriate analysis. It is perhaps worth noting that other methods for analysing our results, though less satisfactory, also give the same result - of a very early (M30) response (see Supplementary Material).

In summary, the present work identified very early magnetic responses (M30) to colour stimulation, with the average peak at 31.7 ms after stimulus onset, and this response was derived from occipital areas, mainly from prestriate cortex. This conclusion is supported by relatively reliable evidence. When considered with evidence from other "estimation"

approaches, it points to V4 as one of the brain areas producing magnetic responses to colour stimuli at the early time window of < 50 ms. We are therefore led to the following conservative conclusion: that the M30 response is due predominantly to activity in prestriate cortex, including area V4. Of course, we do not restrict ourselves to V4; the activation may have as well included (and probably did) areas allied to V4, such as V4 α , which together with V4 constitute the V4 complex [Bartels and Zeki, 2000].

4.3. Impact on physiology

4.3.1. Pathways for transmitting rapid signals

The most obvious candidate for carrying the signals that produced responses in prestriate cortex, including V4, would be the classical visual pathway, relaying signals from the lateral geniculate nucleus (LGN) to V1 and then to V4, both directly and through V2 [Zeki, 1971; Zeki, 1978; Zeki and Shipp, 1989]. But it is equally likely that a direct V1-bypassing route produced the responses we report here. Both the pulvinar and LGN are known to project directly to V4 [Cragg, 1969; Fries, 1981; Schmiedt et al., 2014; Yukie and Iwai, 1981] and this direct route is apparently sufficiently potent to enable a crude but conscious experience of colour [Morland et al., 1999], though the stimuli must be large [Brent et al., 1994]. We have no direct evidence to decide which pathway, or whether both, were used to produce the M30 responses in our study, and hence do not wish to be dogmatic in our interpretation. Our reason for emphasizing the possibility that a V1 by-passing pathway may have delivered early signals to V4 lies partly in the fact that the sensor-level and contour-map analyses both point to prestriate cortex (including V4) as the source of the M30 responses and partly because this interpretation would be consistent with the results obtained for the brain's motion and form systems [ffytche *et al.*, 1995; Gaglianese *et al.*, 2012; Shigihara & Zeki,

2013], and in particular the former, in which it has been shown that signals from fast-moving stimuli ($>20^\circ \text{ sec}^{-1}$) result in responses from V5 before V1 [Beckers and Zeki, 1995; ffytche et al., 1995].

4.3.2. Differences between colours

There were 6 conditions in the present study: 3 colours (blue, red and grey) \times 2 quadrants (lower left and right), and M30 responses were detected for all (Figure 3 and Table 1). The consistency among all conditions strongly supports the existence of the M30 response to colour.

Past evidence shows some anatomical and clinical differences related to blue and red (dominated by short- and long-wave inputs, respectively). Short-wave (S) dominated cells occur mainly in the intercalated layers of the LGN and project directly to V4 without passing through V1 [Lysakowski *et al.*, 1988; Lyon & Rabideau, 2012]. On the other hand, red is more potent in activating cells in V1 [Givre et al., 1995] and in precipitating seizures in photosensitive individuals than blue [Takahashi and Fujiwara, 2004; Takahashi and Tsukahara, 1998]. While we could not detect any difference in the amplitude of activation between blue and red light, we detected spatial differences in the sources of the early magnetic signals for these two colours. In the contour map analysis, the magnetic fields showed different patterns in the occipital areas contralateral to the presented stimuli (sections enclosed by squares in Figure 4), and estimated current orientations from the magnetic patterns clearly have different, very nearly orthogonal directions (solid black arrows in Figure 4) between blue and red conditions. This would seem to indicate that the actual current locations have different normal directions in the cortex between the two conditions (e.g. located in different banks of the same sulcus). Previous studies using somatosensory responses found

very tiny ($< 1\text{cm}$) locational differences in the somatosensory cortex, distinguished from each other through dipole orientation [Allison et al., 1991; Hämäläinen et al., 1993; Papadelis et al., 2011]. Since, in our study, the principal source location for the early time frame was estimated in prestriate cortex and more particularly in V4, the difference in occipital current orientations within that early time frame implies that, likewise, the magnetic sources for the different colours (blue and red) had different locations within the responsive area, which we presume to be V4. It is known that neurons responsive to different colours are clustered within V4, in both monkey and humans [Brouwer and Heeger, 2013; Conway and Tsao, 2009; Zeki, 1977]. Our results mirror these findings, and indicate that clusters within V4 responding to different colours within the early time frame are segregated from each other. Such small spatial differences in the cortex cannot be detected by the source inversion algorithm used in MEG analyses, because such analyses are based on the absolute amplitudes of the magnetic responses, and do not take into account the orientation of the current. Even fMRI studies would be hard put to discriminate adjacent clusters responding to different categories of an attribute within a visual area. Our study therefore constitutes a good example of the importance of information derived from current orientation in neuroimaging studies using MEG.

Of course, the conclusions drawn from our present study are limited to the stimuli we used; they may or may not have been optimal and other stimuli may result in faster or slower delivery of signals to, and activity in, the visual brain.

4.4. Limitations

There are five limitations to this study, which we discuss below:

Firstly, we did not compare the peak latency of the M30 responses between conditions. To perform a statistical comparison on latencies, the latency for each individual and for each condition would be required; this was not practical because of the low SNR: amplitudes of M30 were small and not using filters prevents us from improving the SNR. We therefore restricted ourselves to identifying peak time at a group level.

Secondly, there is a ± 4 ms jitter in timing of stimulus onset on the screen. Although this renders the SNR lower, the very early response (M30) was clearly identified in spite of it. The fact that the early response could be demonstrated in spite of the jitter and the consequent lowering of the SNR, gives us added confidence in our results.

Thirdly, there is the possibility that the results were contaminated by signals from the retina and the LGN. For reasons given in Shigihara *et al.*, (2016), we think that the retina and LGN cannot be the sole sources of the M30 response. Figure 4 shows some magnetic responses in the front part of the head: this might have had its origin from either inside or outside the brain. We have already shown that retinal neural activity affects MEG recordings and this could have contaminated the data [Shigihara *et al.*, 2016]. We took account of this possibility and did not use source priors to estimate sources either inside the visual brain or outside it at the single subject level, thus making our second level analysis free from contamination by these factors.

Fourthly, there are two established approaches for detecting very early responses: absolute amplitude analysis [Shigihara and Zeki, 2013] and SOI analysis [Shigihara *et al.*, 2016; Shigihara and Zeki, 2014b] [Liu *et al.*, 2002][Noguchi *et al.*, 2004] We have used absolute analysis here, but we have also confirmed that similar results are obtained by using the SOI approach (See Supplementary Material).

Fifthly, behavioural results show that, although there was relatively high accuracy in the attentional task (change in size of the fixation cross), there was nevertheless an SD of 13.5 %, implying that, on some occasions, participants had paid less attention to the size change. We however monitored their eye movements with an eye tracker to ensure that they were watching the screen. Hence the SD of 13.5% distributed over all participants does not, we believe, affect our conclusions but simply reflects the possibility that they were paying less attention to the fixation cross during some of the trials.

5. Conclusion

In this work, we have demonstrated a very early response (M30) following colour stimulation, derived mainly from prestriate cortex, including area V4. This brings the colour system into line with two other cardinal visual systems, namely those critical for form and motion perception, in showing that all three systems (colour, form, and visual motion) activate the visual brain within an early time frame, presumably both directly through the V1-bypassing systems as well as the ones using V1 to reach their destinations. This raises a host of interesting issues, which we have partially addressed [Zeki, 2015, 2016] and which we will address more extensively in the future.

Acknowledgements.

This work was supported by the Wellcome Trust.

Reference

Acunzo DJ, Mackenzie G, van Rossum MCW (2012): Systematic biases in early ERP and ERF components as a result of high-pass filtering. *J Neurosci Methods* 209:212–8.

<http://www.ncbi.nlm.nih.gov/pubmed/22743800>.

Allison T, McCarthy G, Wood CC, Jones SJ (1991): Potentials evoked in human and monkey cerebral cortex by stimulation of the median nerve. A review of scalp and intracranial recordings. *Brain* 114:2465–503. <http://www.ncbi.nlm.nih.gov/pubmed/1782527>.

Amano K, Goda N, Nishida S, Ejima Y, Takeda T, Ohtani Y (2006): Estimation of the timing of human visual perception from magnetoencephalography. *J Neurosci* 26:3981–91.

<http://www.ncbi.nlm.nih.gov/pubmed/16611814>.

Angelucci A, Bressloff PC (2006): Contribution of feedforward, lateral and feedback connections to the classical receptive field center and extra-classical receptive field surround of primate V1 neurons. *Prog Brain Res* 154:93–120.

<http://www.ncbi.nlm.nih.gov/pubmed/17010705>.

Bartels A, Zeki S (2000): The architecture of the colour centre in the human visual brain: new results and a review. *Eur J Neurosci* 12:172–93.

Bartels A, Zeki S (2006): The temporal order of binding visual attributes. *Vision Res*

46:2280–6. <http://www.ncbi.nlm.nih.gov/pubmed/16387344>.

Beckers G, Zeki S (1995): The consequences of inactivating areas V1 and V5 on visual motion perception. *Brain* 118:49–60.

Benevento LA, Yoshida K (1981): The afferent and efferent organization of the lateral geniculo-prestriate pathways in the macaque monkey. *J Comp Neurol* 203:455–74.

<http://www.ncbi.nlm.nih.gov/pubmed/6274921>.

Brent PJ, Kennard C, Ruddock KH (1994): Residual colour vision in a human hemianope: spectral responses and colour discrimination. *Proc Biol Sci* 256:219–25.

Brouwer GJ, Heeger DJ (2013): Categorical clustering of the neural representation of color. *J Neurosci* 33:15454–65. <http://www.jneurosci.org/content/33/39/15454.full>.

Bushnell BN, Pasupathy A (2012): Shape encoding consistency across colors in primate V4. *J Neurophysiol* 108:1299–308.

Chatterjee S, Callaway EM (2003): Parallel colour-opponent pathways to primary visual cortex. *Nature* 426:668–71. <http://www.ncbi.nlm.nih.gov/pubmed/14668866>.

Conway BR, Tsao DY (2009): Color-tuned neurons are spatially clustered according to color preference within alert macaque posterior inferior temporal cortex. *Proc Natl Acad Sci U S A* 106:18034–9. <http://www.pubmedcentral.nih.gov/articlerender.fcgi?artid=2764907&tool=pmcentrez&rendertype=abstract>.

Cragg BG (1969): The topography of the afferent projections in the circumstriate visual cortex of the monkey studied by the Nauta method. *Vision Res* 9:733–47.

Desimone R, Schein SJ (1987): Visual properties of neurons in area V4 of the macaque: sensitivity to stimulus form. *J Neurophysiol* 57:835–68.

ffytche DH, Guy CN, Zeki S (1995): The parallel visual motion inputs into areas V1 and V5 of human cerebral cortex. *Brain* 118:1375–1394. <http://www.ncbi.nlm.nih.gov/pubmed/8595471>.

Fries W (1981): The projection from the lateral geniculate nucleus to the prestriate cortex of the macaque monkey. *Proc R Soc London Ser B* 213:73–86. <http://www.ncbi.nlm.nih.gov/pubmed/6117869>.

Friston K, Harrison L, Daunizeau J, Kiebel S, Phillips C, Trujillo-Barreto N, Henson R,

- Flandin G, Mattout J (2008): Multiple sparse priors for the M/EEG inverse problem. *Neuroimage* 39:1104–20. <http://www.ncbi.nlm.nih.gov/pubmed/17997111>.
- Gaglianese A, Costagli M, Bernardi G, Ricciardi E, Pietrini P (2012): Evidence of a direct influence between the thalamus and hMT+ independent of V1 in the human brain as measured by fMRI. *Neuroimage* 60:1440–1447.
- Gattass R, Galkin TW, Desimone R, Ungerleider LG (2014): Subcortical connections of area V4 in the macaque. *J Comp Neurol* 522:1941–1965.
- Givre SJ, Arezzo JC, Schroeder CE (1995): Effects of wavelength on the timing and laminar distribution of illuminance-evoked activity in macaque V1. *Vis Neurosci* 12:229–239. <http://www.ncbi.nlm.nih.gov/pubmed/7786845>.
- Hämäläinen M, Hari R, Ilmoniemi RJ, Knuutila J, Lounasmaa O V. (1993): Magnetoencephalography—theory, instrumentation, and applications to noninvasive studies of the working human brain. *Rev Mod Phys* 65:413–497.
- Hatanaka K, Nakasato N, Seki K, Kanno A, Mizoi K, Yoshimoto T (1997): Striate cortical generators of the N75, P100 and N145 components localized by pattern reversal visual evoked magnetic fields. *Tohoku J Exp Med* 182:9–14. <http://www.ncbi.nlm.nih.gov/pubmed/9241768>.
- Inui K, Kakigi R (2006): Temporal analysis of the flow from V1 to the extrastriate cortex in humans. *J Neurophysiol* 96:775–784. <http://www.ncbi.nlm.nih.gov/pubmed/16835365>.
- Kuriki I, Sadamoto K, Takeda T (2005): MEG recording from the human ventro-occipital cortex in response to isoluminant color stimulation. *Vis Neurosci* 22:283–293. <http://www.ncbi.nlm.nih.gov/pubmed/16079004>.
- Leventhal AG, Wang Y, Schmolesky MT, Zhou Y (1998): Neural correlates of boundary perception. *Vis Neurosci* 15:1107–1118. <http://www.ncbi.nlm.nih.gov/pubmed/9839975>.

Lyon DC, Rabideau C (2012): Lack of robust LGN label following transneuronal rabies virus injections into macaque area V4. *J Comp Neurol* 520:2500–11.

Lysakowski A, Standage GP, Benevento LA (1988): An investigation of collateral projections of the dorsal lateral geniculate nucleus and other subcortical structures to cortical areas V1 and V4 in the macaque monkey: a double label retrograde tracer study. *Exp Brain Res* 69:651–61.

Martin PR, White AJ, Goodchild AK, Wilder HD, Sefton AE (1997): Evidence that blue-on cells are part of the third geniculocortical pathway in primates. *Eur J Neurosci* 9:1536–41. <http://www.ncbi.nlm.nih.gov/pubmed/9240412>.

Martinez-Conde S, Macknik SL, Hubel DH (2004): The role of fixational eye movements in visual perception. *Nat Rev Neurosci* 5:229–40. <http://www.ncbi.nlm.nih.gov/pubmed/14976522>.

Mattout J, Pélérini-Issac M, Garnero L, Benali H (2005): Multivariate source prelocalization (MSP): use of functionally informed basis functions for better conditioning the MEG inverse problem. *Neuroimage* 26:356–73. <http://www.ncbi.nlm.nih.gov/pubmed/15907296>.

Maunsell JH, Gibson JR (1992): Visual response latencies in striate cortex of the macaque monkey. *J Neurophysiol* 68:1332–44. <http://www.ncbi.nlm.nih.gov/pubmed/1432087>.

Morland AB, Jones SR, Finlay AL, Deyzac E, Le S, Kemp S (1999): Visual perception of motion, luminance and colour in a human hemianope:1183–1198.

Mullen KT, Dumoulin SO, Hess RF (2008): Color responses of the human lateral geniculate nucleus: [corrected] selective amplification of S-cone signals between the lateral geniculate nucleus and primary visual cortex measured with high-field fMRI. *Eur J Neurosci* 28:1911–23.

<http://www.pubmedcentral.nih.gov/articlerender.fcgi?artid=2777261&tool=pmcentrez&rendertype=abstract>.

Noguchi Y, Inui K, Kakigi R (2004): Temporal dynamics of neural adaptation effect in the human visual ventral stream. *J Neurosci* 24:6283–90.

<http://www.ncbi.nlm.nih.gov/pubmed/15254083>.

Nowak LG, Munk MH, Girard P, Bullier J (1995): Visual latencies in areas V1 and V2 of the macaque monkey. *Vis Neurosci* 12:371–84.

<http://www.ncbi.nlm.nih.gov/pubmed/7786857>.

Papadelis C, Eickhoff SB, Zilles K, Ioannides AA (2011): BA3b and BA1 activate in a serial fashion after median nerve stimulation: direct evidence from combining source analysis of evoked fields and cytoarchitectonic probabilistic maps. *Neuroimage* 54:60–73.

<http://www.ncbi.nlm.nih.gov/pubmed/20691793>.

Paulus WM, Hömberg V, Cunningham K, Halliday AM (1986): Colour and brightness coding in the central nervous system: theoretical aspects and visual evoked potentials to homogeneous red and green stimuli. *Proc R Soc London Ser B, Biol Sci* 227:53–66.

<http://www.ncbi.nlm.nih.gov/pubmed/2870500>.

Plendl H, Paulus W, Roberts IG, Bötzel K, Towell A, Pitman JR, Scherg M, Halliday AM (1993): The time course and location of cerebral evoked activity associated with the processing of colour stimuli in man. *Neurosci Lett* 150:9–12.

<http://www.ncbi.nlm.nih.gov/pubmed/8469408>.

Portin K, Vanni S, Virsu V, Hari R (1999): Stronger occipital cortical activation to lower than upper visual field stimuli. Neuromagnetic recordings. *Exp Brain Res* 124:287–94.

<http://www.ncbi.nlm.nih.gov/pubmed/9989434>.

Ramkumar P, Jas M, Pannasch S, Hari R, Parkkonen L (2013): Feature-specific information

processing precedes concerted activation in human visual cortex. *J Neurosci* 33:7691–9.

<http://www.ncbi.nlm.nih.gov/pubmed/23637162>.

Schmiedt JT, Maier A, Fries P, Saunders RC, Leopold DA, Schmid MC (2014): Beta

Oscillation Dynamics in Extrastriate Cortex after Removal of Primary Visual Cortex. *J*

Neurosci 34:11857–11864.

Schmolesky MT, Wang Y, Hanes DP, Thompson KG, Leutgeb S, Schall JD, Leventhal AG

(1998): Signal timing across the macaque visual system. *J Neurophysiol* 79:3272–3278.

<http://www.ncbi.nlm.nih.gov/pubmed/9636126>.

Seki K, Nakasato N, Fujita S, Hatanaka K, Kawamura T, Kanno A, Yoshimoto T (1996):

Neuromagnetic evidence that the P100 component of the pattern reversal visual evoked

response originates in the bottom of the calcarine fissure. *Electroencephalogr Clin*

Neurophysiol 100:436–42. <http://www.ncbi.nlm.nih.gov/pubmed/8893661>.

Shigeto H, Tobimatsu S, Yamamoto T, Kobayashi T, Kato M (1998): Visual evoked cortical

magnetic responses to checkerboard pattern reversal stimulation: a study on the neural

generators of N75, P100 and N145. *J Neurol Sci* 156:186–94.

<http://www.ncbi.nlm.nih.gov/pubmed/9588856>.

Shigihara Y, Hoshi H, Zeki S (2016): Early visual cortical responses produced by

checkerboard pattern stimulation. *Neuroimage* 134:532–539.

<http://www.ncbi.nlm.nih.gov/pubmed/27083528>.

Shigihara Y, Zeki S (2013): Parallelism in the brain's visual form system. *Eur J Neurosci*

38:3712–20.

<http://www.pubmedcentral.nih.gov/articlerender.fcgi?artid=3995019&tool=pmcentrez&rendertype=abstract>.

Shigihara Y, Zeki S (2014a): Parallel processing in the brain's visual form system: an fMRI

study. *Front Hum Neurosci* 8:1–8.

http://www.frontiersin.org/Human_Neuroscience/10.3389/fnhum.2014.00506/abstract.

Shigihara Y, Zeki S (2014b): Parallel processing of face and house stimuli by V1 and specialized visual areas: a magnetoencephalographic (MEG) study. *Front Hum Neurosci* 8:901. <http://journal.frontiersin.org/article/10.3389/fnhum.2014.00901/abstract>.

Song Y, Baker CL (2007): Neuronal response to texture- and contrast-defined boundaries in early visual cortex. *Vis Neurosci* 24:65–77.

<http://www.ncbi.nlm.nih.gov/pubmed/17430610>.

Takahashi T, Tsukahara Y (1998): Pocket Monster incident and low luminance visual stimuli: special reference to deep red flicker stimulation. *Acta Paediatr Jpn* 40:631–7.

<http://www.ncbi.nlm.nih.gov/pubmed/9893306>.

Takahashi Y, Fujiwara T (2004): Effectiveness of broadcasting guidelines for photosensitive seizure prevention. *Neurology* 62:990–3.

<http://www.ncbi.nlm.nih.gov/pubmed/15037709>.

Vanrullen R (2011): Four common conceptual fallacies in mapping the time course of recognition. *Front Psychol* 2:365.

<http://www.pubmedcentral.nih.gov/articlerender.fcgi?artid=3232460&tool=pmcentrez&rendertype=abstract>.

Yukie M, Iwai E (1981): Direct projection from the dorsal lateral geniculate nucleus to the prestriate cortex in macaque monkeys. *J Comp Neurol* 201:81–97.

<http://www.ncbi.nlm.nih.gov/pubmed/7276252>.

Zeki S (1983): The Distribution of Wavelength and Orientation Selective Cells in Different Areas of Monkey Visual Cortex. *Proc R Soc B Biol Sci* 217:449–470.

<http://rspb.royalsocietypublishing.org/cgi/doi/10.1098/rspb.1983.0020>.

Zeki SM (1977): Colour Coding in the Superior Temporal Sulcus of Rhesus Monkey Visual Cortex. *Proc R Soc B Biol Sci* 197:195–223.

<http://rspb.royalsocietypublishing.org/cgi/doi/10.1098/rspb.1977.0065>.

Zeki SM (1971): Cortical projections from two prestriate areas in the monkey. *Brain Res* 34:19–35. <http://www.ncbi.nlm.nih.gov/pubmed/5733>.

Zeki SM (1978): The cortical projections of foveal striate cortex in the rhesus monkey. *J Physiol* 277:227–44.

Zeki S, Shipp S (1989): Modular Connections between Areas V2 and V4 of Macaque Monkey Visual Cortex. *Eur J Neurosci* 1:494–506.

<http://www.ncbi.nlm.nih.gov/pubmed/12106135>.

Zeki S (2015): A massively asynchronous, parallel brain. *Philos Trans R Soc Lond B Biol Sci* 370. <http://rstb.royalsocietypublishing.org/content/370/1668/20140174>.