

### Dental status and compression of life expectancy with disability in Japan

Journal:	<i>Journal of Dental Research</i>
Manuscript ID	JDR-17-0056.R2
Manuscript Type:	Research Reports
Date Submitted by the Author:	n/a
Complete List of Authors:	Matsuyama, Yusuke; Tohoku University Graduate School of Dentistry, Department of International and Community Oral Health Aida, Jun; Tohoku University Graduate School of Dentistry, Department of International and community oral health Watt, Richard; Department of Epidemiology and Public Health University College London, Epidemiology and Public Health Tsuboya, Toru; Tohoku University Graduate School of Dentistry, Department of International and Community Oral Health Koyama, Shihoko; Tohoku University Graduate School of Dentistry, Department of International and community oral health Sato, Yukihiro; Tohoku University Graduate School of Dentistry, Department of International and Community Oral Health Kondo, Katsunori; Chiba University, Center for Preventive Medical Science; National Center for Geriatrics and Gerontology Osaka, Ken; Tohoku University Graduate School of Dentistry, Department of International and community oral health
Keywords:	Gerontology, Epidemiology, Edentulous/edentulism
Abstract:	<p>Background: This study examined whether number of teeth contributes to the compression of morbidity, measured as a shortening of the life expectancy with disability, an extension of healthy life expectancy, and overall life expectancy.</p> <p>Methods: A prospective cohort study was conducted. A self-reported baseline survey was conducted to 126,438 community-dwelling older people aged <math>\geq 65</math> years in Japan in 2010, and 85,161 (67.4%) responded. The onset of functional disability and all-cause mortality were followed-up for 1,374 days (follow-up rate = 96.1%). A sex-stratified illness-death model was applied to estimate the adjusted hazard ratios (aHRs) for three health transitions (healthy to dead, healthy to disabled, and disabled to dead). Absolute differences in life expectancy, healthy life expectancy, and life expectancy with disability according to the number of teeth were also estimated. Age, denture use, socioeconomic status, health status, and health behavior were adjusted.</p> <p>Results: Compared with the edentulous participants, participants with <math>\geq 20</math> teeth had lower risks of moving from healthy to dead [aHR (95% CI); men: 0.58 (0.50, 0.68); women: 0.70 (0.57, 0.85)] and from healthy to disabled transitions [men: 0.52 (0.44, 0.61); women: 0.58 (0.49, 0.68)].</p>

1  
2  
3  
4  
5  
6  
7  
8  
9  
10  
11  
12  
13  
14  
15  
16  
17  
18  
19  
20  
21  
22  
23  
24  
25  
26  
27  
28  
29  
30  
31  
32  
33  
34  
35  
36  
37  
38  
39  
40  
41  
42  
43  
44  
45  
46  
47  
48  
49  
50  
51  
52  
53  
54  
55  
56  
57  
58  
59  
60

	<p>They moved from a disabled to dead earlier [men: 1.26 (0.99, 1.60); women: 2.42 (1.72, 3.38)]. Among the participants aged <math>\geq 85</math> years, those with <math>\geq 20</math> teeth had longer life expectancy (men: +57 days; women: +15 days) and healthy life expectancy (men: +92 days; women: +70 days) and shorter life expectancy with disability (men: -35 days; women: -55 days) compared with the edentulous participants. Similar associations were observed among the younger participants and those with 1-9 or 10-19 teeth.</p> <p>Conclusions: The presence of remaining teeth was associated with significant compression of morbidity: older Japanese adults' life expectancy with disability was compressed by 35-55 days within the follow-up for 1,374 days.</p>
--	--

SCHOLARONE™  
Manuscripts

For Peer Review

## Original Research Report

## Dental status and compression of life expectancy with disability in Japan

Yusuke Matsuyama<sup>1</sup>, Jun Aida<sup>1</sup>, Richard G. Watt<sup>2</sup>, Toru Tsuboya<sup>1</sup>, Shihoko Koyama<sup>1</sup>, Yukihiro Sato<sup>1</sup>,  
Katsunori Kondo<sup>3,4</sup>, and Ken Osaka<sup>1</sup>

1) Department of International and Community Oral Health, Tohoku University Graduate School of  
Dentistry, Sendai, Japan

2) Department of Epidemiology and Public Health, University College London, London, UK

3) Center for Preventive Medical Sciences, Chiba University, Chiba, Japan,

4) National Center for Geriatrics and Gerontology, Obu, Japan

**Corresponding author:** Yusuke Matsuyama

Department of International and Community Oral Health, Tohoku University Graduate School of Dentistry

4-1 Seiryomachi, Aoba-ku, Sendai, Miyagi 980-8575, Japan

Phone: +81-22-717-7639; E-mail: matsuyama-thk@umin.org

Abstract word count: 295

Total word count (abstract to Acknowledgements): 3,636; (Introduction to Conclusion: 3,171)

Total number of tables/figures: 5

Number of references: 38

1  
2  
3  
4  
5  
6 **Abstract**  
7

8  
9 **Background:** This study examined whether number of teeth contributes to the  
10  
11  
12 compression of morbidity, measured as a shortening of the life expectancy with  
13  
14  
15 disability, an extension of healthy life expectancy, and overall life expectancy.  
16

17  
18 **Methods:** A prospective cohort study was conducted. A self-reported baseline survey  
19  
20  
21 was conducted to 126,438 community-dwelling older people aged  $\geq 65$  years in Japan in  
22  
23  
24 2010, and 85,161 (67.4%) responded. The onset of functional disability and all-cause  
25  
26  
27 mortality were followed-up for 1,374 days (follow-up rate = 96.1%). A sex-stratified  
28  
29  
30 illness-death model was applied to estimate the adjusted hazard ratios (aHRs) for three  
31  
32  
33 health transitions (healthy to dead, healthy to disabled, and disabled to dead). Absolute  
34  
35  
36 differences in life expectancy, healthy life expectancy, and life expectancy with  
37  
38  
39 disability according to the number of teeth were also estimated. Age, denture use,  
40  
41  
42 socioeconomic status, health status, and health behavior were adjusted.  
43

44 **Results:** Compared with the edentulous participants, participants with  $\geq 20$  teeth had  
45  
46  
47 lower risks of moving from healthy to dead [aHR (95% CI); men: 0.58 (0.50, 0.68);  
48  
49  
50 women: 0.70 (0.57, 0.85)] and from healthy to disabled transitions [men: 0.52 (0.44,  
51  
52  
53 0.61); women: 0.58 (0.49, 0.68)]. They moved from a disabled to dead earlier [men:  
54  
55  
56 1.26 (0.99, 1.60); women: 2.42 (1.72, 3.38)]. Among the participants aged  $\geq 85$  years,  
57  
58  
59  
60

1 those with  $\geq 20$  teeth had longer life expectancy (men: +57 days; women: +15 days) and  
2 healthy life expectancy (men: +92 days; women: +70 days) and shorter life expectancy  
3 with disability (men: -35 days; women: -55 days) compared with the edentulous  
4 participants. Similar associations were observed among the younger participants and  
5 those with 1-9 or 10-19 teeth.

6 **Conclusions:** The presence of remaining teeth was associated with significant  
7 compression of morbidity: older Japanese adults' life expectancy with disability was  
8 compressed by 35–55 days within the follow-up for 1,374 days.

9  
10 Keywords: Life Expectancy, Longevity, Oral health, Dentition, Epidemiology, Survival

11 Analysis

12

1

## 2 **Introduction**

3 Compression of morbidity, namely extending healthy life expectancy and overall life  
4 expectancy, as well as shortening life expectancy with disabilities or diseases (the  
5 difference between life expectancy and healthy life expectancy), is becoming a global  
6 concern in the current aging society (Fries 1980; Vos et al. 2016; Kassebaum et al.  
7 2016). Both life expectancy and healthy life expectancy have extended in recent  
8 decades; however, life expectancy with disability has also extended (Kassebaum et al.  
9 2016). The recent Global Burden of Disease Study reported that life expectancy with  
10 disability has increased from 7.7 years to 8.1 years for men and from 9.4 years to 10.0  
11 years for women between 2005 and 2015 (Kassebaum et al. 2016). For a healthy aging  
12 society, public health should not only focus in increasing life expectancy alone, but also  
13 in extending healthy life expectancy and decreasing life expectancy with disability.

14 Oral diseases are suggested risk factors of various kinds of disability and death  
15 (Polzer et al. 2012; Wu et al. 2016). For example, periodontal diseases are associated  
16 with chronic systemic inflammation and infection, which contribute to atherosclerotic  
17 plaque development (Kebschull et al. 2010) It is also suggested that these factors  
18 contribute to future incidence of cardiovascular diseases (Kebschull et al. 2010; Polzer  
19 et al. 2012). Poor diet and nutrition due to lack of teeth is another potential mechanism

1  
2  
3  
4  
5  
6 1 (Ritchie et al. 2002) because poor nutritional status is a risk factor for  
7  
8  
9 2 cognitive/functional decline (Sanders et al. 2016) and death (Flegal et al. 2007). In fact,  
10  
11  
12 3 edentulous people were more likely to have a cognitive/physical function decline  
13  
14  
15 4 (Tsakos et al. 2015; Wu et al. 2016), and premature death was predicted by clinically  
16  
17  
18 5 examined number of teeth (Hu et al. 2015). Therefore, healthy life expectancy and life  
19  
20  
21 6 expectancy may be influenced by oral diseases. In that case, the extent of the  
22  
23  
24 7 contribution of oral health at the population level would be major because of their high  
25  
26  
27 8 prevalence; untreated dental caries in the permanent dentition and severe periodontitis  
28  
29  
30 9 are the first and the sixth most prevalent chronic diseases worldwide, respectively  
31  
32  
33 10 (Marcenes et al. 2013).

34  
35 11 However, it is unclear whether maintaining good oral health in later life  
36  
37  
38 12 contributes to the compression of morbidity because previous studies have separately  
39  
40  
41 13 evaluated the association between oral health and either disability *or* mortality, thus they  
42  
43  
44 14 were not able to evaluate life expectancy with disability. To overcome this gap in the  
45  
46  
47 15 literature, we aimed to simultaneously investigate the association between the number  
48  
49  
50 16 of teeth and onset of functional disability, mortality without functional disability, and  
51  
52  
53 17 mortality after functional disability among older people in Japan.

54  
55  
56 18

1  
2  
3  
4  
5  
6 **1 Method**  
7

8  
9 **2 Ethical consideration**  
10

11  
12 3 Ethical approval of this study was obtained from the ethics committee of Nihon Fukushi  
13  
14 4 University. We considered that the people who responded to our survey agreed to  
15  
16  
17 5 participate in the study. We followed the STROBE guidelines.  
18  
19

20  
21 6  
22

23 **7 Study design and setting**  
24

25  
26 8 We conducted a prospective cohort study using the data of Japan Gerontological  
27  
28 9 Evaluation Study (JAGES) project, a large-scale prospective panel study targeting  
29  
30  
31 10 community-dwelling older people in Japan. The baseline survey was conducted in 2010,  
32  
33  
34 11 and self-reported questionnaires were mailed to 126,438 people aged  $\geq 65$  years without  
35  
36  
37 12 a certification from the Long-term Care Insurance (Ministry of Health Labour and  
38  
39  
40 13 Welfare 2002) in 24 municipalities. Random sampling from the small administrative  
41  
42  
43 14 regions was employed in 13 large municipalities, while all eligible residents in 11 small  
44  
45  
46 15 municipalities were included. Participants' survival and functional disability status were  
47  
48  
49 16 followed-up for up to 1,374 days using the database of the national and municipal  
50  
51  
52 17 government registry. The follow-up duration varied between municipalities. The median  
53  
54  
55 18 (interquartile range) of the follow-up period was 1,027 (313) days for disability onset  
56  
57  
58  
59  
60



1 and 1,100 (281) days for mortality.

2           In the baseline survey, 85,161 responded (response rate = 67.4%). We excluded  
3 9 individuals missing information on age or sex and 4,574 who were classified as not  
4 being independent regarding basic activities of daily living (bADL). This resulted in  
5 80,578 respondents who were eligible to be followed-up. Among them, 77,397 (36,074  
6 men [mean age, 73.3 years] and 41,323 women [mean age, 73.8 years]) were  
7 successfully linked to their mortality/functional disability data (follow-up rate = 96.1%)  
8 (Appendix 1). The total follow-up person-years were 226,134.6 years.

## 9 10 Outcomes

11 Outcomes of the present study were onset of functional disability and all-cause  
12 mortality obtained from the municipal and the national database. Onset of functional  
13 disability was determined when a person was newly qualified for the Long-term Care  
14 Insurance level 2 or higher (Ministry of Health Labour and Welfare 2002), which is  
15 based on a multistep assessment of functional and cognitive impairments by physicians  
16 and the Certification Committee of Needed Long-Term Care. This definition was used  
17 in previous epidemiological studies (Aida et al. 2012; Hikichi et al. 2015). Information  
18 on mortality in this study would be reliable since we obtained the data from the national

1 long-term care insurance database.

2

3 Predictor variable

4 Our main predictor was the number of remaining teeth at baseline, which was  
5 determined by the following single question: “*How many remaining teeth do you*  
6 *have?*” Their answer was chosen from “ $\geq 20$  teeth,” “10–19 teeth,” “1–9 teeth,” and  
7 “No teeth.” The self-reported number of teeth in this project was validated using the  
8 clinical data of the subsample (Yamamoto et al. 2012) and was used in previous studies  
9 (Sato et al. 2016).

10

11 Covariates

12 We used the following variables as covariates: age (65–69, 70–74, 75–79, 80–84, or  $\geq 85$   
13 years), denture use (using a denture/not using a denture), years of education (<6, 6–9,  
14 10–12, or  $\geq 13$  years), self-reported comorbidity (receiving treatments for any of the  
15 following diseases: heart disease, stroke, hypertension, or diabetes mellitus), self-rated  
16 health (very poor, poor, good, or very good), falling experience in the previous year  
17 (yes/no), smoking status (current smoker, former smoker, or never smoker), alcohol  
18 drinking status (daily drinker, occasional drinker, former drinker, or never drinker),  
19 walking time (<0.5, 0.5–0.9, 1.0–1.4, or  $\geq 1.5$  hours per day), body mass index  
20 (underweight:  $<18.5$  kg/m<sup>2</sup>, normal weight: 18.5–24.9 kg/m<sup>2</sup>, overweight: 25.0–29.9

1 kg/m<sup>2</sup>, or obesity:  $\geq 30$  kg/m<sup>2</sup>), and depression assessed by the Geriatric Depression  
2 Scale (Sheikh and Yesavage 1986) ( $< 5$ , 5-9, or  $\geq 10$ ).

#### 3 4 Statistical analyses

##### 5 Illness-death model

6 To consider the three categories of health status, the illness-death model, one of the  
7 multistate survival models was applied (Hinchliffe et al. 2013). To determine the health  
8 status transition (alive and healthy, alive with a disability, and dead), the illness-death  
9 model was applied (Hinchliffe et al. 2013). Figure 1 shows the conceptual framework of  
10 the model. There are four states: State 1 (alive and healthy), State 2 (alive with a  
11 disability), State 3 (dead without a disability), and State 4 (dead after being disabled);  
12 the three transitions between these states are: Transition 1 (State 1 to State 3), Transition  
13 2 (State 1 to State 2), and Transition 3 (State 2 to State 4). Hazards of each transition —  
14  $\alpha_{13}(t)$ ,  $\alpha_{12}(t)$ , and  $\alpha_{24}(t)$  in Figure 1, respectively — were simultaneously estimated  
15 (Hinchliffe et al. 2013). In the present study, all participants started from State 1 because  
16 we restricted them to participants independently performing their basic ADL at the  
17 baseline survey (Appendix 1). We assumed that once the participants moved to State 2,  
18 they would not return to State 1 because the recovery from a functional disability (the

1 Long-term Care Insurance level 2 or higher) was rare in Japan (Kijima 2007).

2

3 Model construction

4 All analyses were stratified by sex to consider its differences in life expectancy (Luy  
5 and Minagawa 2014). Two models were constructed: a model adjusted for age (Model  
6 1) and another model adjusted for all covariates (Model 2). In addition, survival curve  
7 of the probability for staying in each state was estimated (Hinchliffe et al. 2013). Life  
8 expectancy, healthy life expectancy, and life expectancy with disability from the  
9 baseline survey and proportion of healthy life expectancy in life expectancy were  
10 estimated by calculating the area under the curve (van den Hout et al. 2014).

11 Main analyses were conducted applying the multiple imputation procedure on  
12 the explanatory variables. In this procedure, the multivariate normal imputation method  
13 under an assumption of missing at random was applied, and five multiply imputed  
14 datasets were created. Estimated parameters were then combined using the Rubin's  
15 combination methods (Rubin 1987; Carpenter and Kenward 2012). Probability for  
16 staying in each state after the multiple imputation was calculated by the mean of the  
17 estimated probabilities in each of the five datasets. In addition, two types of sensitivity  
18 analyses were conducted: (1) an analysis including dummy categories indicating

1 missing information on each explanatory variable and (2) another analysis in which  
2 participants who had died or become disabled in the first 6 months were excluded. All  
3 analyses were conducted using the Stata 14.1 software (Stata Corp LP, College Station,  
4 Texas, US), especially the programs of *illdprep*, *stpm2*, and *stpm2illd*.

## 6 **Results**

7 Table 1 shows the demographic characteristics of the participants. The characteristics of  
8 the participants with more teeth were: younger, not using a denture, with a higher  
9 education, higher income, good self-rated health, and no experience of falling, never  
10 smoker, walking longer, normal or overweight, and not depressed.

11 At the end of the follow-up, the prevalence of the participants in the alive and  
12 healthy state, alive with a disability, dead without a disability, and dead after being  
13 disabled were 91.2%, 2.5%, 4.6%, and 1.7% among men, respectively and 94.1%, 2.9%,  
14 2.1%, and 0.8% among women, respectively (Appendix 2).

15 Table 2 presents the results of the illness-death model showing the hazard ratios  
16 (HRs) and 95% confidence intervals (CIs) for each transition. After adjusting for all  
17 covariates, among both men and women, having a higher number of teeth was  
18 significantly associated with lower risks of dying without being disabled (i.e., Transition

1) and onset of disability (i.e., Transition 2). On the other hand, the number of remaining teeth was associated with an early death after being disabled (i.e., Transition 3) among both men and women although it was not statistically significant among men. These results were confirmed by the sensitivity analyses: the analysis with missing information as dummy categories and that without participants who had died or become disabled in the first 6 months showed similar results (results are available on request).

Appendixes 3 and 4 show the probability of the participants being in each state with a conditional age of 65–69, 75–79, and  $\geq 85$  years among men and women, respectively. Participants with fewer teeth were likely to move from the alive and healthy state (blue area) to dead (black area) or alive with a disability state (orange area) in the early time period since the baseline, especially among older people. In addition, these participants were likely to remain longer in the alive with a disability state (orange area).

Figure 2 shows the estimated healthy life expectancy and life expectancy with disability with the conditional age of 65–69, 75–79, and  $\geq 85$  years. Among all of the estimated population, participants with fewer teeth had shorter healthy life expectancy (blue) and life expectancy (blue + orange) and longer life expectancy with disability (orange) (Figure 2). Details of the estimated values of healthy life expectancy and life

1  
2  
3  
4  
5  
6 1 expectancy are shown in Table 3. Life expectancy with disability was decreased, and the  
7  
8  
9 2 proportion of healthy life expectancy in total life expectancy increased with an  
10  
11  
12 3 increasing number of teeth (Table 3).  
13  
14  
15  
16  
17

## 18 **Discussion**

19  
20 6 This large-scale prospective cohort study showed that having more remaining teeth was  
21  
22  
23 7 associated with the compression of morbidity; community-dwelling older people with  
24  
25  
26 8 more teeth had lower mortality, lower incidence of functional disability, and higher  
27  
28  
29 9 mortality after onset of disability. In addition, they had longer healthy life expectancy  
30  
31  
32 10 and life expectancy and shorter life expectancy with disability.  
33  
34  
35  
36  
37

38 12 Strengths and limitations of this study

39  
40  
41 13 This is the first study simultaneously evaluating the independent association between  
42  
43  
44 14 number of teeth and mortality, functional disability, and duration of life with disability.  
45

46 15 We estimated the absolute days of healthy life expectancy, life expectancy, and life  
47  
48  
49 16 expectancy with disability with a follow-up period of 1,374 days. Healthy life  
50  
51  
52 17 expectancy is a useful summary measure reflecting both the length and quality of life  
53  
54  
55 18 (Stiefel et al. 2010; Kassebaum et al. 2016). The estimated effect size between the  
56  
57  
58  
59  
60

1 remaining teeth and healthy life expectancy and life expectancy would be clinically  
2 significant because it is comparable with the estimated effect size of statin use on  
3 extending life expectancy, which is 58 days (Pandya et al. 2015). Furthermore, we used  
4 the relative and absolute scales to evaluate the association between the number of teeth  
5 and disability and mortality. Most previous studies have only used the relative scale  
6 (Wu et al. 2016; Polzer et al. 2012). The absolute scale is easy to interpret, which can be  
7 useful for policymakers and the general public (Gigerenzer 2009). Additionally, we used  
8 a large-scale prospective cohort data including multiple cities from all over Japan. We  
9 followed-up for 226,134.6 person-years, which would be comparable with or larger than  
10 that of other studies; for example, the median of the number of participants and  
11 follow-up duration of each study reviewed in a large systematic review were 8,876 and  
12 12 years, respectively (Aune et al. 2016).

13         This study has important limitations. First, the follow-up period was relatively  
14 short at 1,374 days. However, we believe that reverse causation does not seriously  
15 violate this study's results because the sensitivity analysis without participants who had  
16 died or become disabled in the first 6 months showed similar results. Such a limitation  
17 might cause small absolute differences estimated in this study. Larger absolute  
18 differences would be obtained if the follow-up period was longer because more events



1 would occur. In fact, the result of the present study showed larger absolute differences  
2 among older people, whose mortality rate was high. Second, cause of death was  
3 unknown because we do not have information on it. Our outcome, all-cause mortality,  
4 could include death not related to dental status. Future studies should add information  
5 on cause-specific mortality. Third, the number of remaining teeth was self-reported.  
6 However, the question used to determine the number of remaining teeth was validated  
7 using the clinical examination of the subsample of this cohort (Yamamoto et al. 2012).  
8 Fourth, generalizability of the present results to the whole Japanese population was  
9 limited because the 24 municipalities in this study were not randomly selected and the  
10 sampling method of residents differed according to the population of the municipality.  
11 However, demographic characteristics of study participants were similar to the general  
12 Japanese population. Fifth, generalizability of this study's results for other countries is  
13 unknown because all municipalities included in this study were in Japan.

#### 14 15 Comparison with other studies

16 The association between number of remaining teeth and all-cause/cause-specific  
17 mortality has been reported in previous studies (Aida et al. 2011; Hu et al. 2015). A  
18 systematic review also suggested the relationship between tooth loss and

1 all-cause/circulatory mortality (Polzer et al. 2012). The association between the number  
2 of teeth and functional decline has also been reported in previous cohort studies (Tsakos  
3 et al. 2015; Aida et al. 2012; Sato et al. 2016). It is suggested that having more teeth  
4 contributes to improving life expectancy and healthy life expectancy; however, no study  
5 has investigated the association between remaining teeth and life expectancy with  
6 disability. Thus, the present study fills this gap in the literature.

#### 7 8 Possible mechanisms to explain study findings

9 Diet, nutrition, and systemic inflammation/infection are suggested as the underlying  
10 mechanisms of the relationship between remaining teeth and functional/cognitive  
11 disability and mortality (Ritchie et al. 2002; Kebschull et al. 2010). People with fewer  
12 remaining teeth have poorer nutritional status (Ritchie et al. 2002). Poor nutritional  
13 status is a risk factor of functional decline (Sanders et al. 2016) and death (Flegal et al.  
14 2007). Systemic infection and inflammation due to periodontal pathogens contribute to  
15 atherosclerotic plaque development and raise the risk of cardiovascular diseases  
16 (Kebschull et al. 2010), which are major causes of functional disability in Japan  
17 (Ministry of Health Labour and Welfare 2013). A study using the biomarkers of  
18 inflammation supports this association (de Oliveira et al. 2010).

1  
2  
3  
4  
5  
6 1 Another possible mechanism is the social interaction pathway. Poor oral health  
7  
8  
9 2 affects the social aspects of quality of life, such as avoiding conversation, laughing,  
10  
11  
12 3 and/or eating with other people because of chewing difficulties and embarrassment  
13  
14  
15 4 (Kressin et al. 1996). In fact, poor oral condition among community-dwelling older  
16  
17  
18 5 adults is associated with lower ability to get out of one's neighborhood independently  
19  
20  
21 6 (Makhija et al. 2011). Fewer remaining teeth predicts the future onset of being  
22  
23  
24 7 homebound among older people in Japan (Koyama et al. 2016). Therefore, this could  
25  
26  
27 8 reduce future social interactions, which is a large risk factor for mortality (Holt-lunstad  
28  
29  
30 9 et al. 2010).

31  
32 10 Shorter life expectancy with disability among people with teeth can be  
33  
34  
35 11 explained by the delayed onset of disability, rather than having remaining teeth was  
36  
37  
38 12 associated with premature death among those with disability because both life  
39  
40  
41 13 expectancy and healthy life expectancy were longer among those with larger numbers of  
42  
43  
44 14 teeth (Figure 2). This is supported by a previous study showing that having  $\geq 20$   
45  
46  
47 15 remaining teeth was associated with lower risks of mortality among older  
48  
49  
50 16 institutionalized people (Shimazaki et al. 2001). The lower point estimates among men  
51  
52  
53 17 than women would depend on the fact that the difference between life expectancy and  
54  
55  
56 18 healthy life expectancy is generally longer in women than in men; the differences are  
57  
58  
59  
60

1  
2  
3  
4  
5  
6 1 9.1 years and 12.3 years in men and women in Japan, respectively (Ministry of Health  
7  
8  
9 2 Labour and Welfare 2012). The association between higher numbers of teeth and shorter  
10  
11  
12 3 life expectancy with disability was not statistically significant among men. Shorter life  
13  
14  
15 4 expectancy among men compared to women (Ministry of Health Labour and Welfare  
16  
17  
18 5 2012), and other limitations of the study, may have adversely affected our ability to  
19  
20  
21 6 detect the relationship between life expectancy with disability and number of teeth  
22  
23  
24 7 among men.

#### 9 Future research

10 Studies with longer follow-up periods are needed because the duration of the follow-up  
11 might influence the estimated absolute differences in life expectancy, healthy life  
12 expectancy, and life expectancy with disability according to the number of teeth. We  
13 could only estimate the days of life expectancy, healthy life expectancy, and life  
14 expectancy with disability during the 3-year follow-up. It is expected that larger  
15 differences in life expectancy, healthy life expectancy, and life expectancy with  
16 disability by the number of teeth would be obtained with longer followed-up data. In  
17 addition, studies investigating the precise mechanisms of such associations are needed.

18

1  
2  
3  
4  
5  
6 1 Policy implications  
7

8  
9 2 This study suggested that maintaining good dental status in older age could contribute to  
10  
11 3 compression of morbidity. The extent of the contribution would be clinically significant:  
12  
13 4 life expectancy with disability of the participants aged  $\geq 85$  years was compressed by  
14  
15 5 35–55 days within the follow-up period of 1,374 days, as well as extending their healthy  
16  
17 6 life expectancy and life expectancy. The results of this study highlight the public health  
18  
19 7 importance of providing appropriate high quality treatment and prevention services to  
20  
21 8 older people to enable them to maintain a healthy dentition, and in particular the  
22  
23 9 retention of functioning teeth in later life.  
24  
25  
26  
27  
28  
29  
30  
31

32  
33  
34  
35

### 36 **Conclusions**

37  
38 12 Having more remaining teeth was independently associated with lower risks of  
39  
40 13 mortality and functional disability, and shorter life expectancy with disability in a  
41  
42 14 population of older people in Japan.  
43  
44  
45

46  
47  
48  
49

### 50 **Acknowledgements**

51  
52 17 This study used data from the Japan Gerontological Evaluation Study (JAGES),  
53  
54  
55 18 conducted by the Center for Well-being and Society, Nihon Fukushi University as one  
56  
57  
58  
59  
60

1 of their research projects. This work was supported by MEXT (Ministry of Education,  
2 Culture, Sports, Science and Technology-Japan)- Supported Program for the Strategic  
3 Research Foundation at Private Universities (2009-2013); JSPS (Japan Society for the  
4 Promotion of Science) KAKENHI Grant Numbers [22330172, 22390400, 23243070,  
5 23590786, 23790710, 24390469, 24530698, 24683018, 25253052, 25870573,  
6 25870881, 26285138, 26882010, 15H01972, 15H05059]; Health Labour Sciences  
7 Research Grants [H22-Choju- Shitei-008, H24-Junkanki [Seishu]-Ippan-007,  
8 H24-Chikyukibo-Ippan-009, H24-Choju-Wakate-009,  
9 H25-Kenki-Wakate-015,H25-Choju-Ippan-003, H26-Irryo-Shitei-003 [Fukkou],  
10 H26-Choju-Ippan-006, H27-Ninchisyou-Ippan-001, H28-Choju-Ippan-002]; the  
11 Research and Development Grants for Longevity Science from AMED (Japan Agency  
12 for Medical Research and development); the Research Funding for Longevity Sciences  
13 from National Center for Geriatrics and Gerontology [24-17, 24-23]; Japan Foundation  
14 For Aging And Health [J09KF00804 and a grant without any specific number]; and The  
15 Health Care Science Institute. The authors have no conflicts of interest to be declared.

16

## 17 Reference

18 Aida J, Kondo K, Hirai H, Nakade M, Yamamoto T, Hanibuchi T, Osaka K, Sheiham A,

- 1 Tsakos G, Watt RG. 2012. Association between dental status and incident disability in an  
2 older Japanese population. *J. Am. Geriatr. Soc.* 60(2):338–343.
- 3 Aida J, Kondo K, Yamamoto T, Hirai H, Nakade M, Osaka K, Sheiham A, Tsakos G,  
4 Watt RG. 2011. Oral health and cancer, cardiovascular, and respiratory mortality of  
5 Japanese. *J. Dent. Res.* 90(9):1129–1135.
- 6 Aune D, Sen A, Prasad M, Norat T, Janszky I, Tonstad S, Romundstad P, Vatten LJ.  
7 2016. BMI and all cause mortality: systematic review and non-linear dose-response  
8 meta-analysis of 230 cohort studies with 3.74 million deaths among 30.3 million  
9 participants. *BMJ* 353:i2156.
- 10 Carpenter J, Kenward M. 2012. Multiple Imputation and its Application. 1st edn.  
11 Hoboken: John Wiley & Sons.
- 12 Flegal KM, Graubard BI, Williamson DF, Gail MH. 2007. Cause-specific excess deaths  
13 associated with underweight, overweight, and obesity. *JAMA* 298(17):2028–2037.
- 14 Fries JF. 1980. Aging, Natural Death, and the Compression of Morbidity. *N. Engl. J.*  
15 *Med.* 303(3):130–135.
- 16 Gigerenzer G. 2009. Making sense of health statistics. *Bull. World Health Organ.*  
17 87(8):567.
- 18 Hikichi H, Kondo N, Kondo K, Aida J, Takeda T, Kawachi I. 2015. Effect of a

- 1  
2  
3  
4  
5  
6 1 community intervention programme promoting social interactions on functional  
7  
8  
9 2 disability prevention for older adults: propensity score matching and instrumental  
10  
11  
12 3 variable analyses, JAGES Taketoyo study. *J. Epidemiol. Community Health*  
13  
14 4 69(9):905–910.  
15  
16  
17 5 Hinchliffe SR, Scott DA, Lambert PC. 2013. Flexible parametric illness-death models.  
18  
19  
20 6 *Stata Journal* 13(4):759–775.  
21  
22  
23 7 Holt-lunstad J, Smith TB, Layton JB. 2010. Social relationships and mortality risk: A  
24  
25  
26 8 meta-analytic review. *PLoS Med.* 7(7):e1000316.  
27  
28  
29 9 van den Hout A, Ogurtsova E, Gampe J, Matthews FE, Hout A van den, Ogurtsova E,  
30  
31  
32 10 Gampe J, Matthews FE. 2014. Investigating healthy life expectancy using a multi-state  
33  
34  
35 11 model in the presence of missing data and misclassification. *Demogr. Res.*  
36  
37  
38 12 30(42):1220–1241.  
39  
40  
41 13 Hu H-Y, Lee Y-L, Lin S-Y, Chou Y-C, Chung D, Huang N, Chou Y-J, Wu C-Y. 2015.  
42  
43  
44 14 Association Between Tooth Loss, Body Mass Index, and All-Cause Mortality Among  
45  
46  
47 15 Elderly Patients in Taiwan. *Medicine (Baltimore)*. 94(39):e1543.  
48  
49  
50 16 Kassebaum NJ, Arora M, Barber RM, Bhutta ZA, Brown J, Carter A, Casey DC,  
51  
52  
53 17 Charlson FJ, Coates MM, Coggeshall M, et al. 2016. Global, regional, and national  
54  
55  
56 18 disability-adjusted life-years (DALYs) for 315 diseases and injuries and healthy life  
57  
58  
59  
60



- 1  
2  
3  
4  
5  
6 1 expectancy (HALE), 1990–2015: a systematic analysis for the Global Burden of  
7  
8  
9 2 Disease Study 2015. *Lancet* 388(10053):1603–1658.  
10  
11  
12 3 Kebschull M, Demmer RT, Papapanou PN. 2010. “Gum bug, leave my heart  
13  
14 4 alone!”;--epidemiologic and mechanistic evidence linking periodontal infections and  
15  
16 5 atherosclerosis. *J. Dent. Res.* 89(9):879–902.  
17  
18  
19  
20 6 Kijima H. 2007. A study on levels of care changes for individuals requiring long-term  
21  
22 7 care at home. *Res. Reports Suzuka Univ. Med. Sci.* 14:39–52 [in Japanese].  
23  
24  
25  
26 8 Koyama S, Aida J, Kondo K, Yamamoto T, Saito M, Ohtsuka R, Nakade M, Osaka K.  
27  
28  
29 9 2016. Does poor dental health predict becoming homebound among older Japanese?  
30  
31  
32 10 *BMC Oral Health* 16(1):51.  
33  
34  
35 11 Kressin N, Spiro 3rd A, Bosse R, Garcia R, Kazis L. 1996. Assessing oral health-related  
36  
37 12 quality of life: findings from the normative aging study. *Med Care* 34(5):416–427.  
38  
39  
40  
41 13 Luy M, Minagawa Y. 2014. Gender gaps--Life expectancy and proportion of life in poor  
42  
43 14 health. *Heal. reports* 25(12):12–19.  
44  
45  
46 15 Makhija SK, Gilbert GH, Clay OJ, Matthews JC, Sawyer P, Allman RM, Faahd MB a,  
47  
48  
49 16 Clay OJ, Matthews JC, Sawyer P, et al. 2011. Oral Health-Related Quality of Life and  
50  
51 17 Life-Space Mobility in Community-Swelling Older Adults. *J. Am. Geriatr. Soc.*  
52  
53  
54  
55 18 59(3):512–518.  
56  
57  
58  
59  
60

- 1  
2  
3  
4  
5  
6 1 Marcenes W, Kassebaum NJ, Bernabé E, Flaxman A, Naghavi M, Lopez A, Murray CJL.  
7  
8  
9 2 2013. Global burden of oral conditions in 1990-2010: a systematic analysis. *J. Dent. Res.*  
10  
11  
12 3 92(7):592–597.
- 14 4 Ministry of Health Labour and Welfare. 2013. Comprehensive Survey of Living  
15  
16  
17 5 Conditions. Available at: <http://www.mhlw.go.jp/toukei/list/20-21.html>  
18  
19  
20 6 Ministry of Health Labour and Welfare. 2012. Health Japan 21 (the second term).  
21  
22  
23 7 Ministry of Health Labour and Welfare. 2002. Long-term care insurance in Japan.  
24  
25  
26 8 Available at: <http://www.mhlw.go.jp/english/topics/elderly/care/index.html>  
27  
28  
29 9 de Oliveira C, Watt R, Hamer M. 2010. Toothbrushing, inflammation, and risk of  
30  
31  
32 10 cardiovascular disease: results from Scottish Health Survey. *BMJ* 340(8 Suppl):c2451.  
33  
34  
35 11 Pandya A, Sy S, Cho S, Weinstein MC, Gaziano TA. 2015. Cost-Effectiveness of  
36  
37  
38 12 10-Year Risk Thresholds for Initiation of Statin Therapy for Primary Prevention of  
39  
40  
41 13 Cardiovascular Disease. *Jama* 314(2):142–150.  
42  
43  
44 14 Polzer I, Schwahn C, Völzke H, Mundt T, Biffar R. 2012. The association of tooth loss  
45  
46  
47 15 with all-cause and circulatory mortality. Is there a benefit of replaced teeth? A  
48  
49  
50 16 systematic review and meta-analysis. *Clin. Oral Investig.* 16(2):333–351.  
51  
52  
53 17 Ritchie CS, Joshipura K, Hung H-C, Douglass CW. 2002. Nutrition as a mediator in the  
54  
55  
56 18 relation between oral and systemic disease: associations between specific measures of  
57  
58  
59  
60

- 1 adult oral health and nutrition outcomes. *Crit. Rev. Oral Biol. Med.* 13(3):291–300.
- 2 Rubin DB. 1987. *Multiple Imputation for Nonresponse in Surveys*. Hoboken: John  
3 Wiley & Sons.
- 4 Sanders C, Behrens S, Schwartz S, Wengreen H, Corcoran CD, Lyketsos CG, Tschanz  
5 JT. 2016. Nutritional Status is Associated with Faster Cognitive Decline and Worse  
6 Functional Impairment in the Progression of Dementia: The Cache County Dementia  
7 Progression Study1. *J. Alzheimers. Dis.* 52(1):33–42.
- 8 Sato Y, Aida J, Kondo K, Tsuboya T, Watt R, Yamamoto T, Koyama S, Matsuyama Y,  
9 Osaka K. 2016. Tooth loss and decline in functional capacity: a prospective cohort study  
10 from the JAGES project. *J Am Geriatr Soc* 64(11):2336–2342.
- 11 Sheikh J, Yesavage J. 1986. Geriatric Depression Scale (GDS): recent evidence and  
12 development of a shorter version. *Clin Gerontol* 5(1/2):165–173.
- 13 Shimazaki Y, Soh I, Saito T, Yamashita Y, Koga T, Miyazaki H, Takehara T. 2001.  
14 Influence of dentition status on physical disability, mental impairment, and mortality in  
15 institutionalized elderly people. *J. Dent. Res.* 80(1):340–345.
- 16 Stiefel MC, Perla RJ, Zell BL. 2010. A healthy bottom line: healthy life expectancy as  
17 an outcome measure for health improvement efforts. *Milbank Q.* 88(1):30–53.
- 18 Tsakos G, Watt RG, Rouxel PL, de Oliveira C, Demakakos P. 2015. Tooth loss

- 1 associated with physical and cognitive decline in older adults. *J. Am. Geriatr. Soc.*
- 2 63(1):91–99.
- 3 Vos T, Allen C, Arora M, Barber RMRM, Bhutta ZA, Brown A, Carter A, Casey DC,
- 4 Charlson FJ, Chen AZ, et al. 2016. Global, regional, and national incidence, prevalence,
- 5 and years lived with disability for 310 diseases and injuries, 1990–2015: a systematic
- 6 analysis for the Global Burden of Disease Study 2015. *Lancet* 388(10053):1545–1602.
- 7 Wasserstein RL, Lazar NA. 2016. The ASA’s Statement on p -Values: Context, Process,
- 8 and Purpose. *Am. Stat.* 70(2):129–133.
- 9 Wu B, Fillenbaum GG, Plassman BL, Guo L. 2016. Association between Oral Health
- 10 and Cognitive Status: A Systematic Review. *J. Am. Geriatr. Soc.* 64(4):739–751.
- 11 Yamamoto T, Kondo K, Fuchida S, Aida J, Nakade M, Hirata Y. 2012. Validity of
- 12 self-reported oral health variables : Aichi Gerontological Evaluation Study (AGES)
- 13 project. *Heal. Sci. Heal. Care* 12(1):4–12.

Table 1. Characteristics of the participants

		Men (n = 36,074)					Women (n = 41,323)					
		No. of teeth					No. of teeth					
		≥20	10-19	1-9	0	Missing	≥20	10-19	1-9	0	Missing	
		n	12,367	9,233	8,662	4,951	861	13,362	10,266	10,544	5,723	1,428
		%	%	%	%	%	%	%	%	%	%	
Age (years)												
	65-69	43.0	37.3	25.3	15.9	24.3	42.4	36.5	23.2	9.6	19.7	
	70-74	31.7	30.0	27.6	21.7	27.4	31.4	30.1	28.0	19.9	25.9	
	75-79	17.2	20.8	24.9	26.5	24.5	17.0	20.3	26.5	27.2	27.8	
	80-84	6.6	9.2	15.6	22.7	16.4	7.1	9.9	15.4	25.1	18.3	
	≥85	1.5	2.7	6.6	13.2	7.4	2.0	3.3	6.9	18.2	8.3	
Denture use												
	Not using a denture	66.5	33.7	24.3	30.4	8.9	68.2	34.6	23.1	26.3	12.3	
	Using a denture	27.3	61.0	69.8	58.6	20.1	21.0	55.4	67.5	58.3	30.4	
	Missing	6.2	5.3	5.9	10.9	71.0	10.8	10.0	9.4	15.4	57.3	
Education (years)												
	<6	0.5	1.1	2.0	3.0	3.1	1.1	1.9	3.6	8.4	4.6	
	6-9	34.0	41.5	48.0	52.9	35.5	41.5	47.2	52.3	56.2	41.2	
	10-12	34.9	32.7	27.9	23.8	27.3	38.0	34.0	29.1	21.3	23.8	
	≥13	26.9	20.2	16.8	13.0	20.9	15.3	12.1	9.1	5.6	12.0	
	Missing	3.6	4.4	5.2	7.4	13.1	4.0	4.8	6.0	8.5	18.3	
Income												
	Low	23.4	29.6	33.5	36.7	27.5	25.5	29.5	33.3	34.6	25.1	
	Middle	32.7	31.0	27.5	22.9	23.2	28.2	25.3	20.6	16.1	16.2	
	High	33.5	25.9	22.2	19.5	22.1	27.2	22.2	18.2	14.6	13.7	
	Missing	10.4	13.5	16.8	20.9	27.2	19.2	22.9	27.9	34.7	45.0	
Comorbidity												
	With comorbidity	51.7	53.2	52.8	53.7	51.9	46.4	49.1	52.6	55.5	49.9	
	No comorbidity	44.9	43.2	42.5	41.5	39.8	48.7	45.5	41.2	38.6	38.9	
	Missing	3.3	3.6	4.6	4.8	8.2	4.9	5.4	6.2	5.9	11.3	
SRH												
	Very poor	2.1	2.5	3.9	4.6	3.3	1.6	1.9	2.6	3.2	2.7	
	Poor	12.2	16.3	20.8	22.4	19.3	12.5	14.7	18.9	21.5	19.3	
	Good	68.9	68.8	64.9	61.5	64.7	71.2	71.7	67.8	65.0	64.1	
	Very good	16.1	11.6	9.5	10.1	11.5	13.4	10.5	9.1	8.9	10.9	
	Missing	0.7	0.8	1.0	1.3	1.3	1.3	1.2	1.6	1.5	3.0	
Falling experience												
	Yes	19.5	25.3	29.1	32.7	26.0	27.2	31.4	36.0	39.5	30.8	
	No	76.4	70.1	65.8	61.7	62.3	69.0	64.6	59.5	54.6	56.1	

1		Missing	4.1	4.6	5.1	5.6	11.7	3.8	4.0	4.6	5.9	13.1
2	Smoking status											
3		Current smoker	13.1	19.3	23.3	23.7	9.1	1.9	3.2	3.7	3.9	1.6
4		Former smoker	51.5	50.5	49.1	49.8	20.3	4.0	5.1	4.7	4.4	3.3
5		Never smoker	29.6	23.8	20.6	17.8	12.0	84.9	81.3	77.8	75.3	47.7
6		Missing	5.8	6.4	7.0	8.7	58.7	9.2	10.4	13.8	16.4	47.4
7	Alcohol drinking											
8		Daily drinker	34.3	32.0	29.2	24.8	11.0	4.2	4.0	3.4	2.4	1.5
9		Occasional drinker	27.1	23.9	20.7	16.3	9.2	12.8	12.1	9.3	6.3	5.0
10		Former drinker	4.7	6.0	7.3	7.0	2.4	1.0	1.0	1.0	0.9	0.5
11		Never drinker	29.2	33.2	37.6	45.0	21.1	77.3	78.1	80.4	83.6	54.4
12		Missing	4.7	4.9	5.3	6.9	56.2	4.7	4.8	5.9	6.8	38.5
13	Walking time (hours per day)											
14		<0.5	24.6	29.3	34.0	36.8	30.1	28.3	31.2	35.5	38.9	30.5
15		0.5-0.9	34.7	32.8	31.0	27.9	30.4	34.4	33.6	30.9	26.9	27.0
16		1.0-1.4	17.6	16.4	14.4	13.5	12.7	15.2	13.3	12.8	11.9	12.3
17		≥1.5	18.5	15.9	14.8	14.7	12.8	15.9	14.9	12.6	11.8	11.3
18		Missing	4.7	5.6	5.8	7.1	14.1	6.2	7.0	8.2	10.4	18.8
19	BMI											
20		Underweight	3.6	4.3	6.8	7.8	5.8	7.7	7.3	8.1	9.2	10.3
21		Normal weight	64.4	61.2	60.8	58.6	54.9	64.9	61.3	57.2	52.4	51.8
22		Overweight	26.3	27.0	23.4	21.9	22.8	19.8	21.9	22.0	20.9	16.7
23		Obesity	1.6	2.0	1.8	1.9	2.0	2.7	2.9	3.6	3.4	2.2
24		Missing	4.2	5.6	7.2	9.8	14.5	4.9	6.6	9.1	14.0	19.0
25	GDS											
26		<5	69.6	62.0	55.7	54.0	54.6	62.3	58.8	53.7	49.8	44.5
27		5-9	14.4	18.2	21.2	20.0	16.8	14.6	16.3	18.0	19.2	13.8
28		≥10	3.7	5.8	8.0	7.9	5.9	3.9	4.9	6.6	7.1	4.5
29		Missing	12.3	14.1	15.2	18.1	22.6	19.2	20.0	21.7	23.9	37.3

All P-values were <0.001.

Abbreviations: SRH: self-rated health, BMI: Body-Mass Index, GDS: Geriatric Depression Scale

Table 2. Results of the illness-death model with multiple imputations: association between the number of remaining teeth and each transition

	Men (n = 36,074)				Women (n = 41,323)			
	Model 1		Model 2		Model 1		Model 2	
	HR	95% CI	HR	95% CI	HR	95% CI	HR	95% CI
No. of teeth (ref. 0 teeth)								
Transition 1: healthy to dead								
≥20 teeth	0.48	0.41, 0.55 *	0.58	0.50, 0.68 *	0.62	0.51, 0.76 *	0.70	0.57, 0.85 *
10-19 teeth	0.63	0.55, 0.73 *	0.71	0.62, 0.82 *	0.76	0.63, 0.92 *	0.81	0.67, 0.98 *
1-9 teeth	0.76	0.67, 0.87 *	0.80	0.70, 0.91 *	0.76	0.64, 0.91 *	0.77	0.64, 0.92 *
Transition 2: healthy to disabled								
≥20 teeth	0.42	0.36, 0.49 *	0.52	0.44, 0.61 *	0.52	0.44, 0.61 *	0.58	0.49, 0.68 *
10-19 teeth	0.58	0.50, 0.67 *	0.65	0.56, 0.76 *	0.70	0.60, 0.81 *	0.75	0.65, 0.86 *
1-9 teeth	0.74	0.65, 0.84 *	0.77	0.67, 0.88 *	0.72	0.63, 0.82 *	0.73	0.64, 0.83 *
Transition 3: disabled to dead								
≥20 teeth	1.00	0.79, 1.27	1.26	0.99, 1.60	2.11	1.52, 2.94 *	2.42	1.72, 3.38 *
10-19 teeth	1.03	0.81, 1.29	1.20	0.94, 1.53	2.32	1.69, 3.19 *	2.42	1.76, 3.34 *
1-9 teeth	1.05	0.86, 1.28	1.14	0.93, 1.40	1.41	1.05, 1.90 *	1.41	1.04, 1.90 *

\* P<0.05

Abbreviations: HR: hazard ratio, CI: confidence interval

Transition 1: transition from the alive and healthy state to the dead without a disability state

Transition 2: transition from the alive and healthy state to the alive with a disability state

Transition 3: transition from the alive with a disability state to the dead after being disabled state

Model 1: Age was adjusted.

Model 2: Model 1 + denture use, education, income, comorbidity, self-rated health, falling experience, smoking status, alcohol drinking, walking time, body mass index, and Geriatric Depression Scale score were adjusted.

Table 3. Expected healthy life expectancy and life expectancy with disability with follow-up of 3 years

	Men				Women			
	HALE	LE	LED	HALE/LE	HALE	LE	LED	HALE/LE
	(days)	(days)	(days)	(%)	(days)	(days)	(days)	(%)
Aged 65–69 years								
Number of teeth								
≥20	1343.5	1355.9	12.4	99.1	1358.8	1367.7	8.9	99.3
10-19	1336.3	1352.0	15.7	98.8	1355.2	1366.6	11.4	99.2
1-9	1330.9	1349.5	18.6	98.6	1355.8	1367.2	11.4	99.2
0	1319.5	1343.7	24.2	98.2	1349.6	1365.2	15.7	98.9
Aged 75–79 years								
Number of teeth								
≥20	1306.9	1330.6	23.7	98.2	1334.2	1356.1	21.9	98.4
10-19	1291.5	1321.4	29.9	97.7	1324.9	1352.9	28.0	97.9
1-9	1279.9	1315.3	35.4	97.3	1326.5	1355.1	28.6	97.9
0	1256.1	1302.6	46.5	96.4	1310.6	1350.2	39.5	97.1
Aged ≥85 years								
Number of teeth								
≥20	1243.8	1280.1	36.3	97.2	1245.8	1302.1	56.3	95.7
10-19	1215.3	1261.0	45.7	96.4	1218.0	1288.9	70.9	94.5
1-9	1194.3	1248.4	54.1	95.7	1222.5	1301.9	79.3	93.9
0	1151.7	1223.1	71.4	94.2	1176.3	1287.5	111.2	91.4

Abbreviations: HALE: healthy life expectancy, LE: life expectancy, LED: life expectancy with disability



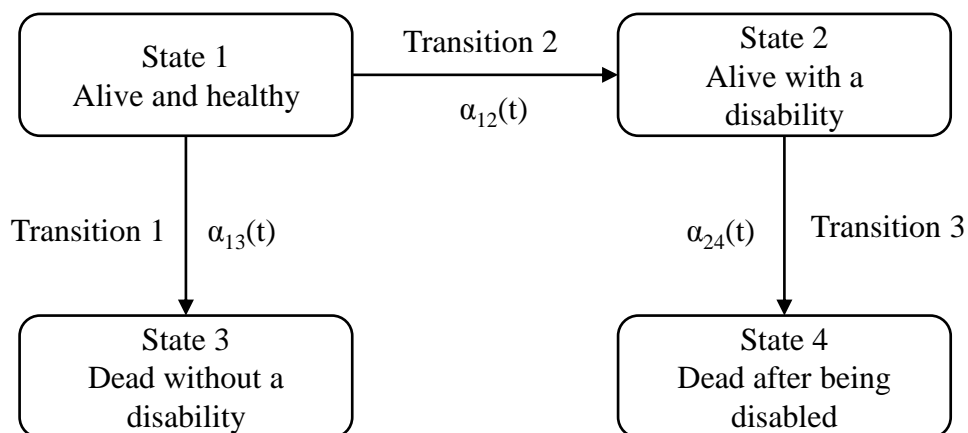


Figure 1. Illness-death model

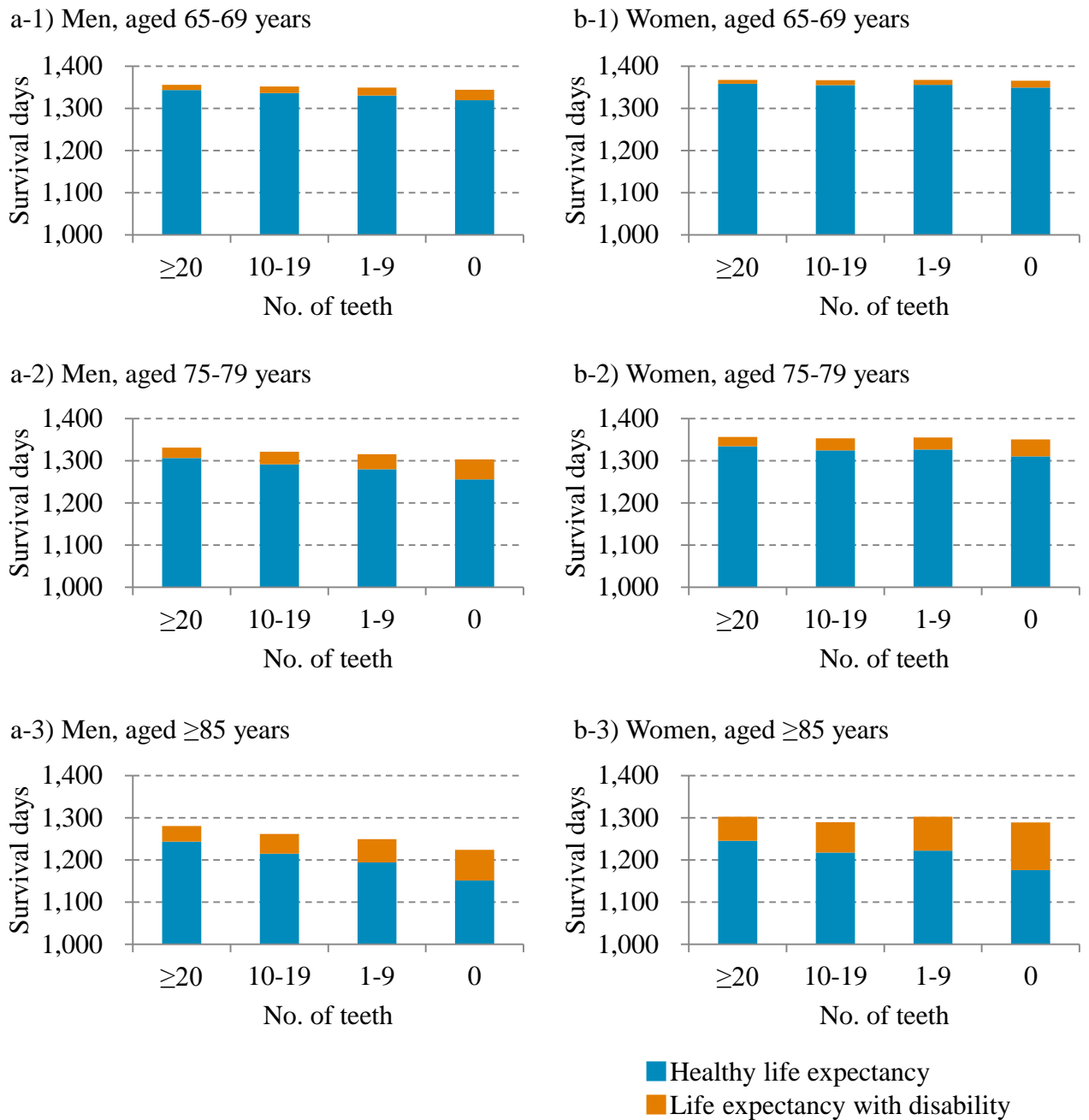


Figure 2. Estimated healthy life expectancy and life expectancy with disability; each covariate except age was conditioned at as follows: using a denture, education of 6-9 years, low income, with comorbidity, good self-rated health, no falling experience, not a smoker, not a drinker, walking <0.5 hours, normal weight, and no depression.

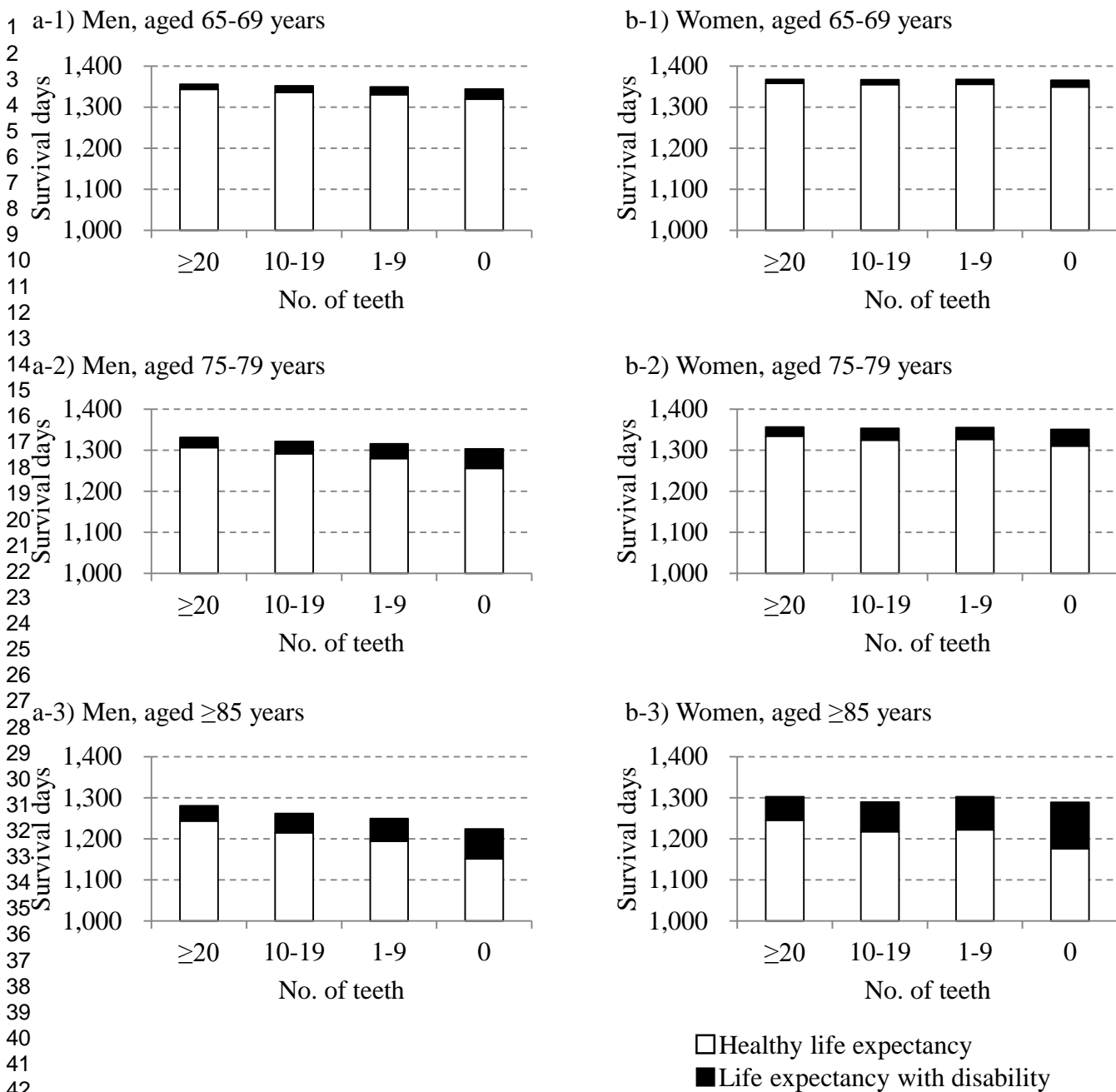
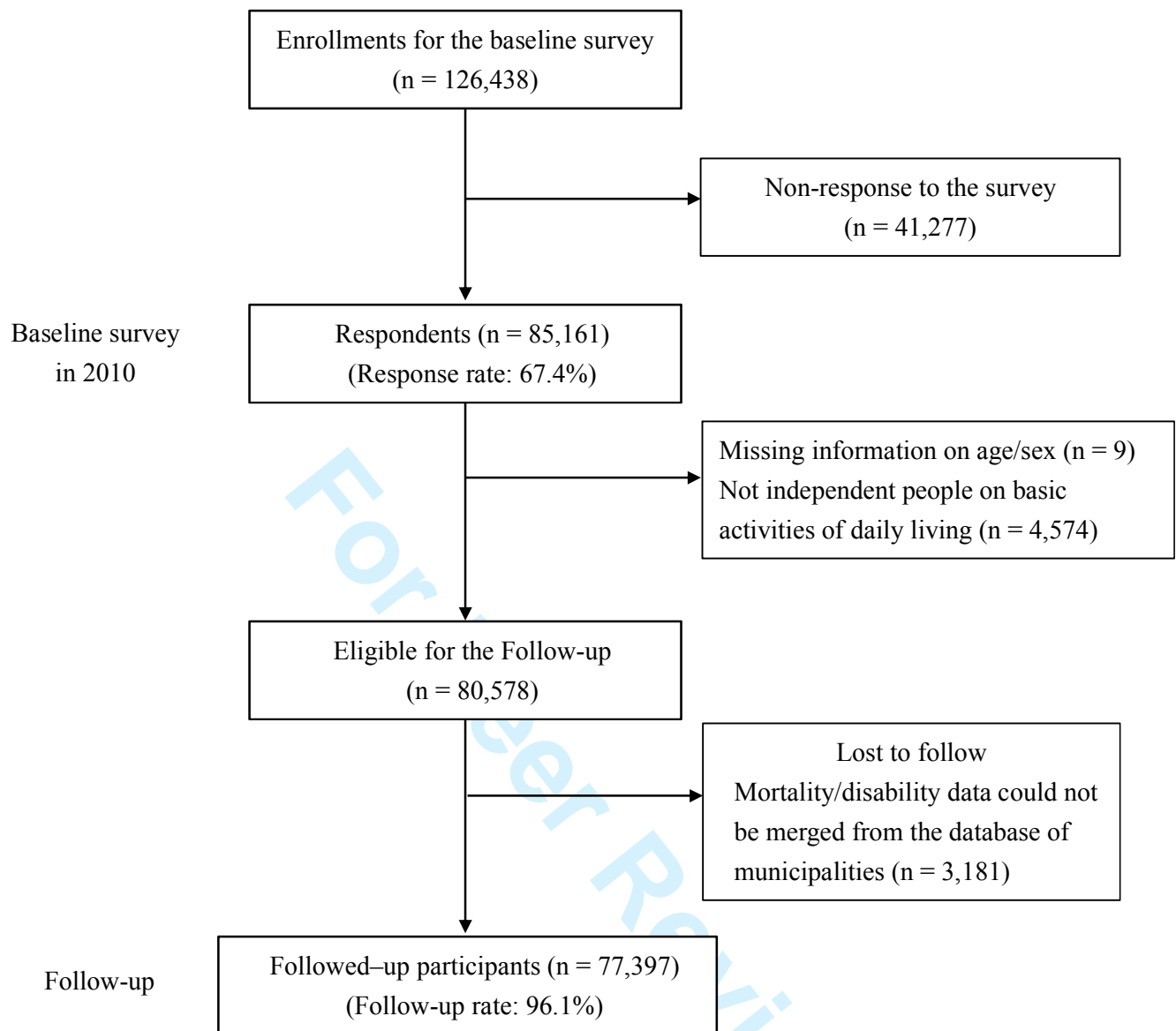
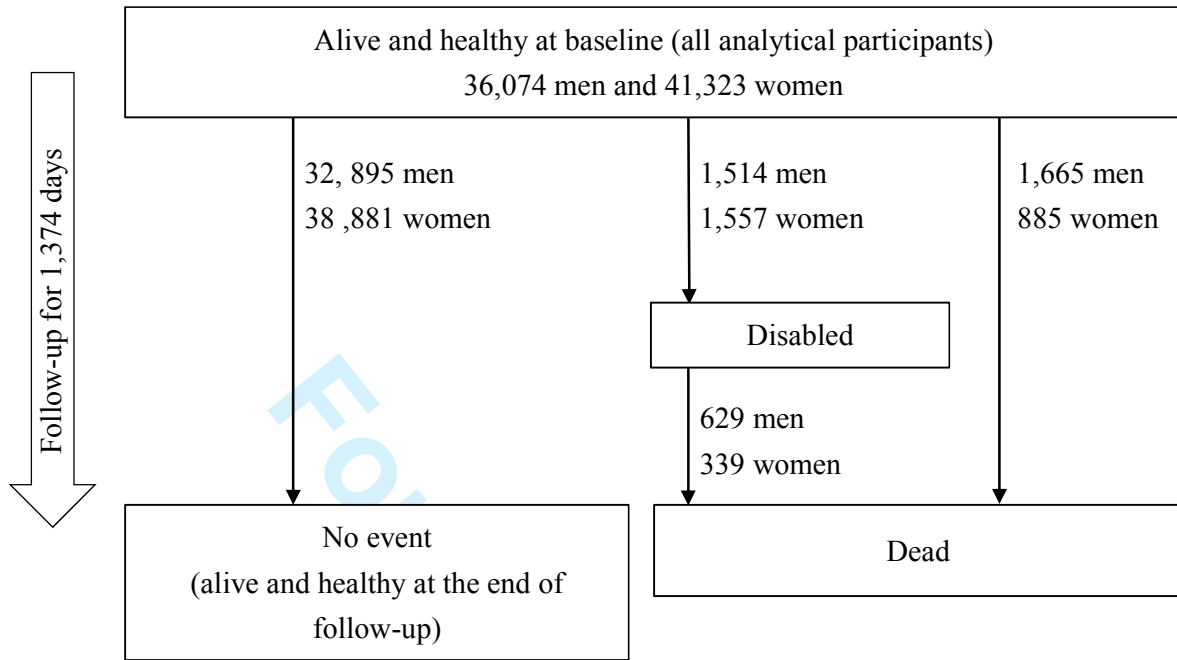


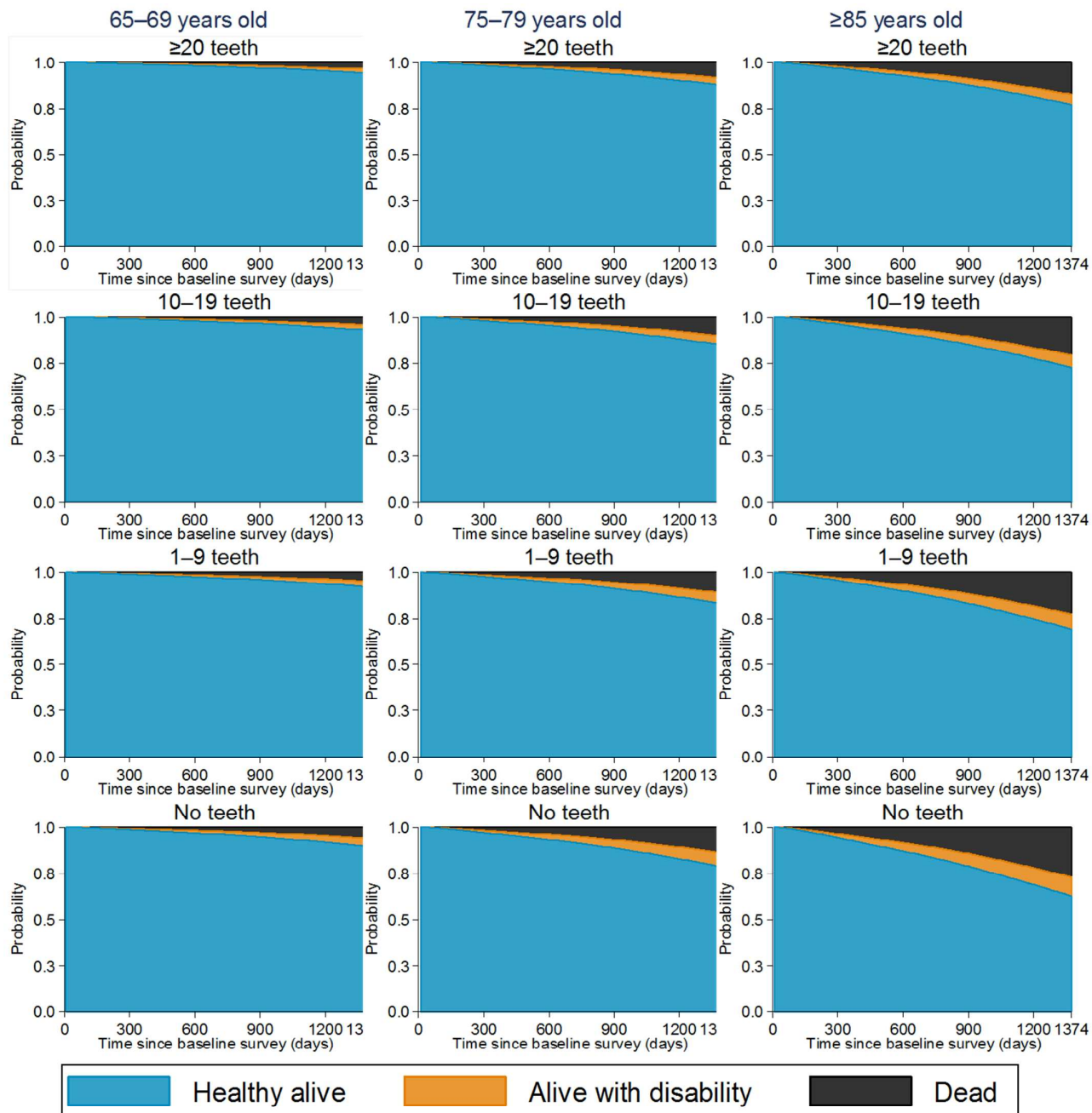
Figure 2. Estimated healthy life expectancy and life expectancy with disability; each covariate except age was conditioned at as follows: using a denture, education of 6-9 years, low income, with comorbidity, good self-rated health, no falling experience, not a smoker, not a drinker, walking <0.5 hours, normal weight, and no depression.



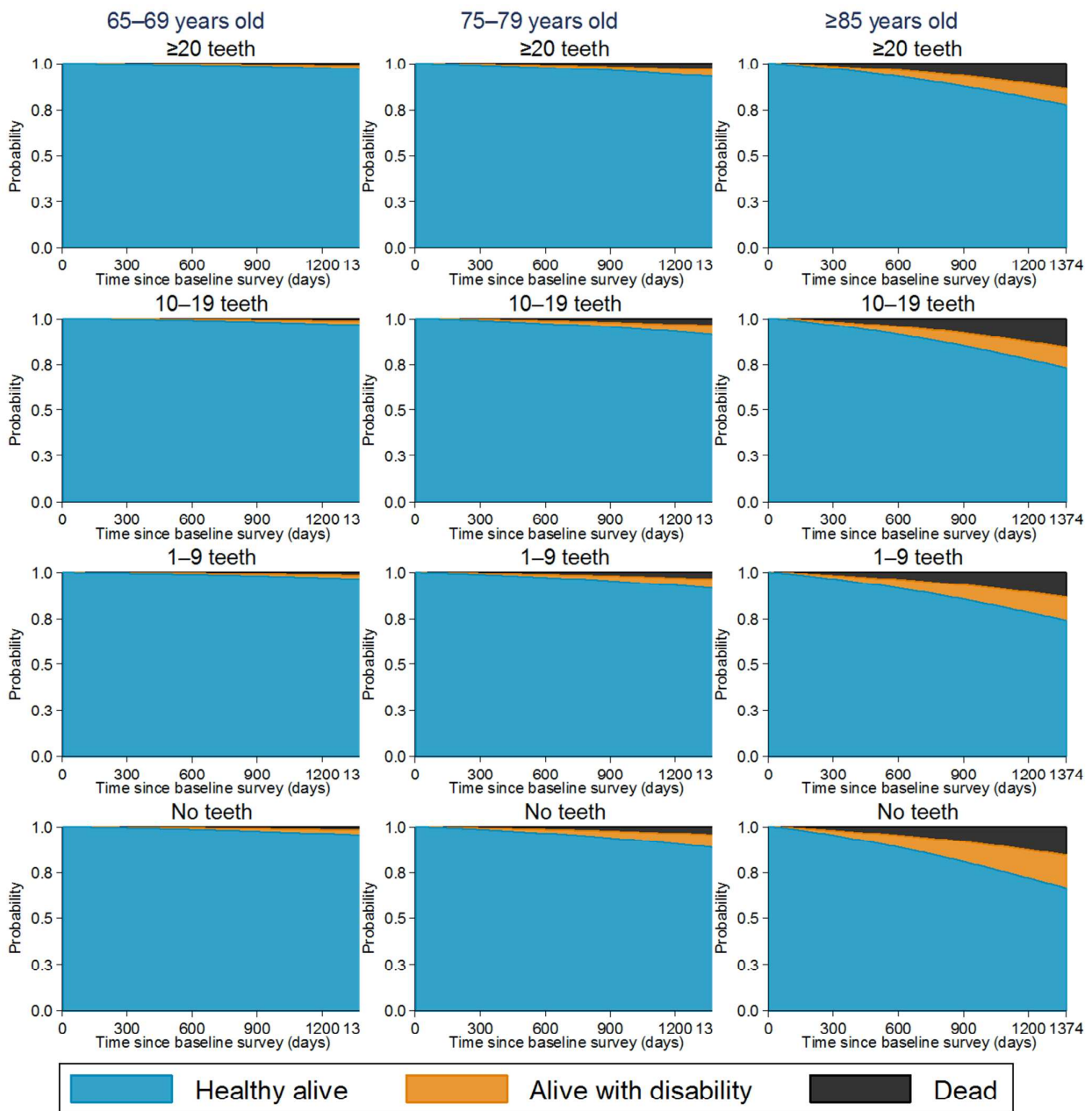
Appendix 1. Flowchart of the study participants; the basic activities of daily living was measured using a single question: “Can you walk, take a bath or use a toilet independently?” with the choice of “I can do them without assistance,” “I can do them with partial assistance by hand, etc.,” and “I need full assistance in doing them.” People who answered “I can do them without assistance” were followed.



Appendix 2. Health status trajectory of the analytical participants



Appendix 3. Probability for stacking in each state among MEN (alive without a disability, alive with a disability, or dead); age, denture use, education, income, comorbidity, self-rated health, falling experience, smoking status, alcohol drinking, walking time, body mass index, and depression were adjusted.



Appendix 4. Probability for stacking in each state among WOMEN (alive without a disability, alive with a disability, or dead); age, denture use, education, income, comorbidity, self-rated health, falling experience, smoking status, alcohol drinking, walking time, body mass index, and depression were adjusted.

STROBE Statement—checklist of items that should be included in reports of observational studies

	Item No.	Recommendation	Page No.	Relevant text from manuscript
Title and abstract	1	(a) Indicate the study’s design with a commonly used term in the title or the abstract	1	Title
		(b) Provide in the abstract an informative and balanced summary of what was done and what was found	2	Abstract
Introduction				
Background/rationale	2	Explain the scientific background and rationale for the investigation being reported	4-5	Introduction
Objectives	3	State specific objectives, including any prespecified hypotheses	5	Therefore, we aimed to simultaneously investigate the association between the number of teeth and onset of functional disability, mortality without functional disability, and mortality after functional disability among Japanese older people.
Methods				
Study design	4	Present key elements of study design early in the paper	6	We conducted a prospective cohort study using the data of Japan Gerontological Evaluation Study (JAGES) project, a large-scale prospective panel study targeting community-dwelling older Japanese people.
Setting	5	Describe the setting, locations, and relevant dates, including periods of recruitment, exposure, follow-up, and data collection	6	Study design and setting
Participants	6	(a) Cohort study—Give the eligibility criteria, and the sources and methods of selection of participants. Describe methods of follow-up Case-control study—Give the eligibility criteria, and the sources and methods of case ascertainment and control selection. Give the rationale for the choice of cases and controls Cross-sectional study—Give the eligibility criteria, and the sources and methods of selection of participants	6	Study design and setting
		(b) Cohort study—For matched studies, give matching criteria and number of exposed and unexposed Case-control study—For matched studies, give matching criteria and the number of controls per case	NA	NA



Variables	7	Clearly define all outcomes, exposures, predictors, potential confounders, and effect modifiers. Give diagnostic criteria, if applicable	7-9	Outcomes; Predictor variable; Covariates
Data sources/ measurement	8*	For each variable of interest, give sources of data and details of methods of assessment (measurement). Describe comparability of assessment methods if there is more than one group	7-9	Outcomes; Predictor variable; Covariates
Bias	9	Describe any efforts to address potential sources of bias	10	Model construction
Study size	10	Explain how the study size was arrived at	6	Study design and setting

Continued on next page

For Peer Review

Quantitative variables	11	Explain how quantitative variables were handled in the analyses. If applicable, describe which groupings were chosen and why	7-9	Outcomes; Predictor variable; Covariates
Statistical methods	12	(a) Describe all statistical methods, including those used to control for confounding	10	Statistical analyses
		(b) Describe any methods used to examine subgroups and interactions	10	Statistical analyses
		(c) Explain how missing data were addressed	10	Model construction
		(d) Cohort study—If applicable, explain how loss to follow-up was addressed	NA	NA
		Case-control study—If applicable, explain how matching of cases and controls was addressed Cross-sectional study—If applicable, describe analytical methods taking account of sampling strategy		
		(e) Describe any sensitivity analyses	10	Model construction
Results				
Participants	13*	(a) Report numbers of individuals at each stage of study—eg numbers potentially eligible, examined for eligibility, confirmed eligible, included in the study, completing follow-up, and analysed	6-7	Figure 1
		(b) Give reasons for non-participation at each stage	6-7	Figure 1
		(c) Consider use of a flow diagram	6-7	Figure 1
Descriptive data	14*	(a) Give characteristics of study participants (eg demographic, clinical, social) and information on exposures and potential confounders	11	Table 1
		(b) Indicate number of participants with missing data for each variable of interest	11	Table 1
		(c) Cohort study—Summarise follow-up time (eg, average and total amount)	6	Study design and setting
Outcome data	15*	Cohort study—Report numbers of outcome events or summary measures over time	11	Appendix 1
		Case-control study—Report numbers in each exposure category, or summary measures of exposure		
		Cross-sectional study—Report numbers of outcome events or summary measures		
Main results	16	(a) Give unadjusted estimates and, if applicable, confounder-adjusted estimates and their precision (eg, 95% confidence interval). Make clear which confounders were adjusted for and why they were included	12	Table 2
		(b) Report category boundaries when continuous variables were categorized	12	Table 2
		(c) If relevant, consider translating estimates of relative risk into absolute risk for a meaningful time period	13	Figure 3

Continued on next page

Other analyses	17	Report other analyses done—eg analyses of subgroups and interactions, and sensitivity analyses	13	Appendixes 2 and 3
Discussion				
Key results	18	Summarise key results with reference to study objectives	13-14	This large-scale prospective cohort study showed that having more remaining teeth was associated with the compression of morbidity; community-dwelling older people with more teeth had lower mortality, lower incidence of functional disability, and higher mortality after onset of disability. In addition, they had longer HALE and LE and shorter LED.
Limitations	19	Discuss limitations of the study, taking into account sources of potential bias or imprecision. Discuss both direction and magnitude of any potential bias	14	Strengths and limitations of this study
Interpretation	20	Give a cautious overall interpretation of results considering objectives, limitations, multiplicity of analyses, results from similar studies, and other relevant evidence	16	Discussion
Generalisability	21	Discuss the generalisability (external validity) of the study results	15	Third, generalizability of this study's results for other countries is unknown because all municipalities included in this study were in Japan.
Other information				
Funding	22	Give the source of funding and the role of the funders for the present study and, if applicable, for the original study on which the present article is based	19-20	Acknowledgements

\*Give information separately for cases and controls in case-control studies and, if applicable, for exposed and unexposed groups in cohort and cross-sectional studies.

Note: An Explanation and Elaboration article discusses each checklist item and gives methodological background and published examples of transparent reporting. The STROBE checklist is best used in conjunction with this article (freely available on the Web sites of PLoS Medicine at <http://www.plosmedicine.org/>, Annals of Internal Medicine at <http://www.annals.org/>, and Epidemiology at <http://www.epidem.com/>). Information on the STROBE Initiative is available at [www.strobe-statement.org](http://www.strobe-statement.org).